

Data Path : Z:\pestpcbsrv\HPCHEM1\ECD_P\Data\PP122822\
 Data File : PP054108.D
 Signal(s) : Signal #1: ECD1A.ch Signal #2: ECD2B.ch
 Acq On : 28 Dec 2022 13:15
 Operator : YP\AJ
 Sample : N6213-08
 Misc :
 ALS Vial : 7 Sample Multiplier: 1

Instrument :
 ECD_P
 ClientSampleId :

Integration File signal 1: autoint1.e
 Integration File signal 2: autoint2.e
 Quant Time: Dec 28 21:08:43 2022
 Quant Method : Z:\pestpcbsrv\HPCHEM1\ECD_P\methods\PP121322.M
 Quant Title : GC EXTRACTABLES
 QLast Update : Wed Dec 14 05:38:40 2022
 Response via : Initial Calibration
 Integrator: ChemStation

Volume Inj. : 2 µl
 Signal #1 Phase : ZB-MR1 Signal #2 Phase: ZB-MR2
 Signal #1 Info : 30Mx0.32mmx 0.50µ Signal #2 Info : 30M x 0.32mm x 0.25µm

Compound	RT#1	RT#2	Resp#1	Resp#2	ng/ml	ng/ml
System Monitoring Compounds						
1) SA Tetrachlo...	4.327	3.593	285.2E6	23038862	135.803	14.752 #
2) SA Decachlor...	10.117	8.623	30018929	21884445	17.681	15.668
Target Compounds						
3) L1 AR-1016-1	5.520	4.681	4533.3E6	3031.0E6	66853.681	65996.639
4) L1 AR-1016-2	5.543	4.700	6046.7E6	4250.9E6	60703.109	67842.610
5) L1 AR-1016-3	5.605	4.876	3721.4E6	2052.4E6	58882.671	60468.155
6) L1 AR-1016-4	5.704	4.919	2948.5E6	1001.7E6	59501.694	33616.244 #
7) L1 AR-1016-5	6.000	5.133	1943.4E6	1348.7E6	36922.123	37194.362
8) L2 AR-1221-1	4.554	3.804	653.4E6	485.5E6	25364.778	25076.109
9) L2 AR-1221-2	4.641	3.891	788.3E6	521.4E6	40490.322	35666.483
10) L2 AR-1221-3	4.720	3.967	3973.0E6	2849.8E6	68363.694	64067.613
11) L3 AR-1232-1	4.720	3.967	3973.0E6	2849.8E6	88704.982	82815.315
12) L3 AR-1232-2	5.252	4.700	3307.9E6	4250.9E6	128594.957	142425.944
13) L3 AR-1232-3	5.543	4.876	6046.7E6	2052.4E6	128825.545	129539.613
14) L3 AR-1232-4	5.704	4.961	2948.5E6	1213.4E6	124438.555	78525.133 #
15) L3 AR-1232-5	5.796	5.133	1432.7E6	1348.7E6	77685.369	81904.750
16) L4 AR-1242-1	5.520	4.681	4533.3E6	3031.0E6	86544.949	85588.645
17) L4 AR-1242-2	5.543	4.700	6046.7E6	4250.9E6	79361.536	88482.152
18) L4 AR-1242-3	5.605	4.876	3721.4E6	2052.4E6	75955.740	78722.785
19) L4 AR-1242-4	5.704	4.961	2948.5E6	1213.4E6	76805.099	42533.362 #
20) L4 AR-1242-5	6.444	5.487	928.3E6	819.8E6	22760.252	26857.582
21) L5 AR-1248-1	5.520	4.681	4533.3E6	3031.0E6	107562.336	106547.210
22) L5 AR-1248-2	5.796	4.919	1432.7E6	1001.7E6	22669.543	24214.332
23) L5 AR-1248-3	6.000	4.961	1943.4E6	1213.4E6	27745.448	28892.622
24) L5 AR-1248-4	6.405	5.133	1000.7E6	1348.7E6	14188.791	28031.688 #
25) L5 AR-1248-5	6.444	5.528	928.3E6	602.8E6	13173.742	16053.322
26) L6 AR-1254-1	6.378	5.487	807.7E6	819.8E6	10422.330	12518.918
27) L6 AR-1254-2	6.602	5.635	618.4E6	111.2E6	5314.929	1906.678 #
28) L6 AR-1254-3	6.966	6.040	142.2E6	110.2E6	1214.075	1252.863
29) L6 AR-1254-4	7.253	6.270	72253656	48434933	911.394	1057.185
30) L6 AR-1254-5	7.673	6.688	29509570	24067833	302.585	308.824
31) L7 AR-1260-1	7.132	6.187	17212988	64894525	178.238	994.871 #
32) L7 AR-1260-2	7.389	6.359	30043956	16424194	271.962	218.102
33) L7 AR-1260-3	7.750	6.512	12991438	14906471	171.823	205.651
34) L7 AR-1260-4	7.973	6.987	18754185	7446460	199.821	137.241 #
35) L7 AR-1260-5	8.293	7.230	14224609	11898753	89.705	99.500
36) L8 AR-1262-1	7.750	6.781	12991438	4225339	108.528	118.471
37) L8 AR-1262-2	8.293	6.987	14224609	7446460	74.181	95.797 #
38) L8 AR-1262-3	8.618f	7.515	12549766	2605764	90.569	41.359 #
39) L8 AR-1262-4	8.676	7.578	2766238	10505450	44.448	91.881 #
40) L8 AR-1262-5	9.356	8.076	4890138	4312020	69.202	86.559 #
41) L9 AR-1268-1	8.618f	7.515	12549766	2605764	51.423	14.403 #

Data Path : Z:\pestpcbsrv\HPCHEM1\ECD_P\Data\PP122822\
 Data File : PP054108.D
 Signal(s) : Signal #1: ECD1A.ch Signal #2: ECD2B.ch
 Acq On : 28 Dec 2022 13:15
 Operator : YP\AJ
 Sample : N6213-08
 Misc :
 ALS Vial : 7 Sample Multiplier: 1

Instrument :
 ECD_P
 ClientSampleId :

Integration File signal 1: autoint1.e
 Integration File signal 2: autoint2.e
 Quant Time: Dec 28 21:08:43 2022
 Quant Method : Z:\pestpcbsrv\HPCHEM1\ECD_P\methods\PP121322.M
 Quant Title : GC EXTRACTABLES
 QLast Update : Wed Dec 14 05:38:40 2022
 Response via : Initial Calibration
 Integrator: ChemStation

Volume Inj. : 2 µl
 Signal #1 Phase : ZB-MR1 Signal #2 Phase: ZB-MR2
 Signal #1 Info : 30Mx0.32mmx 0.50µ Signal #2 Info : 30M x 0.32mm x 0.25µm

	Compound	RT#1	RT#2	Resp#1	Resp#2	ng/ml	ng/ml
42)	L9 AR-1268-2	8.698	7.578	4229776	10505450	18.611	61.563 #
43)	L9 AR-1268-3	8.909	7.813	-478481	937380	N.D.	6.346 #
44)	L9 AR-1268-4	9.356	8.076	4890138	4312020	63.527	77.372
45)	L9 AR-1268-5	9.771	8.368	3915990	1924816	6.659	4.072 #

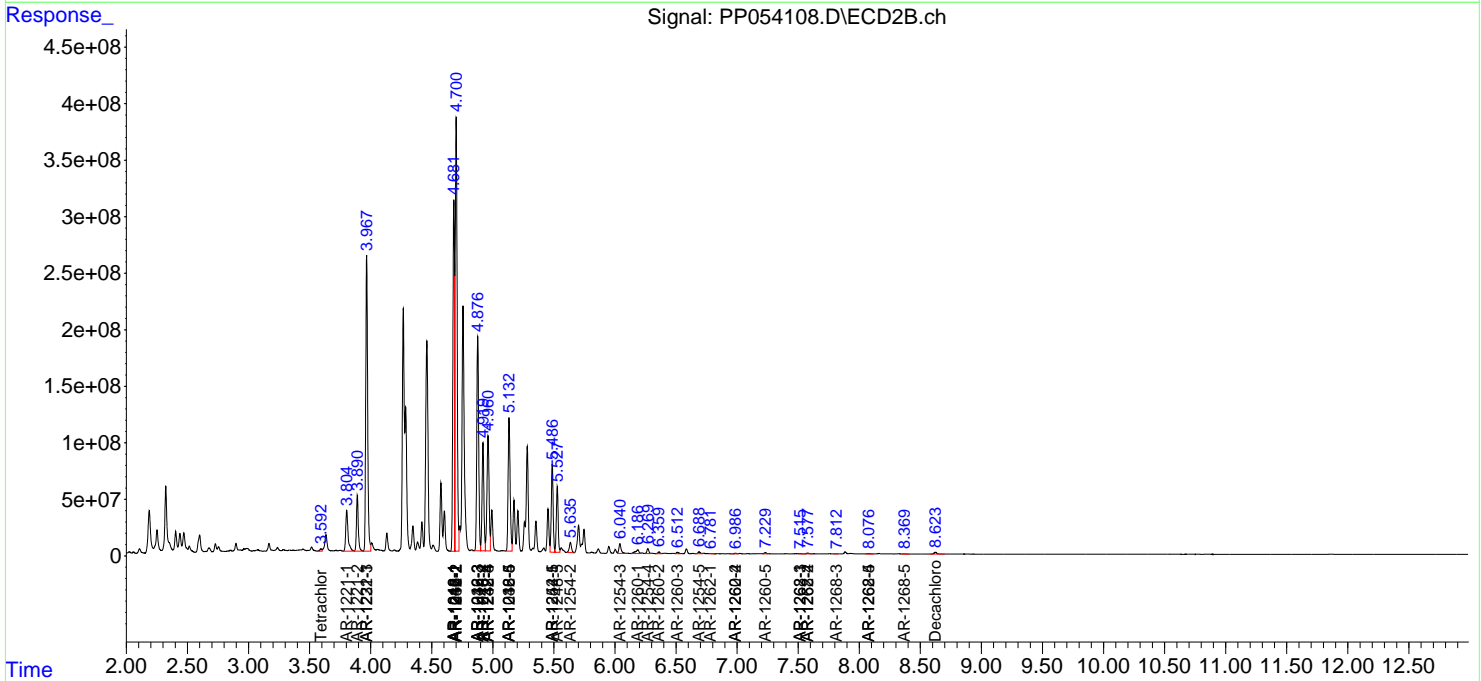
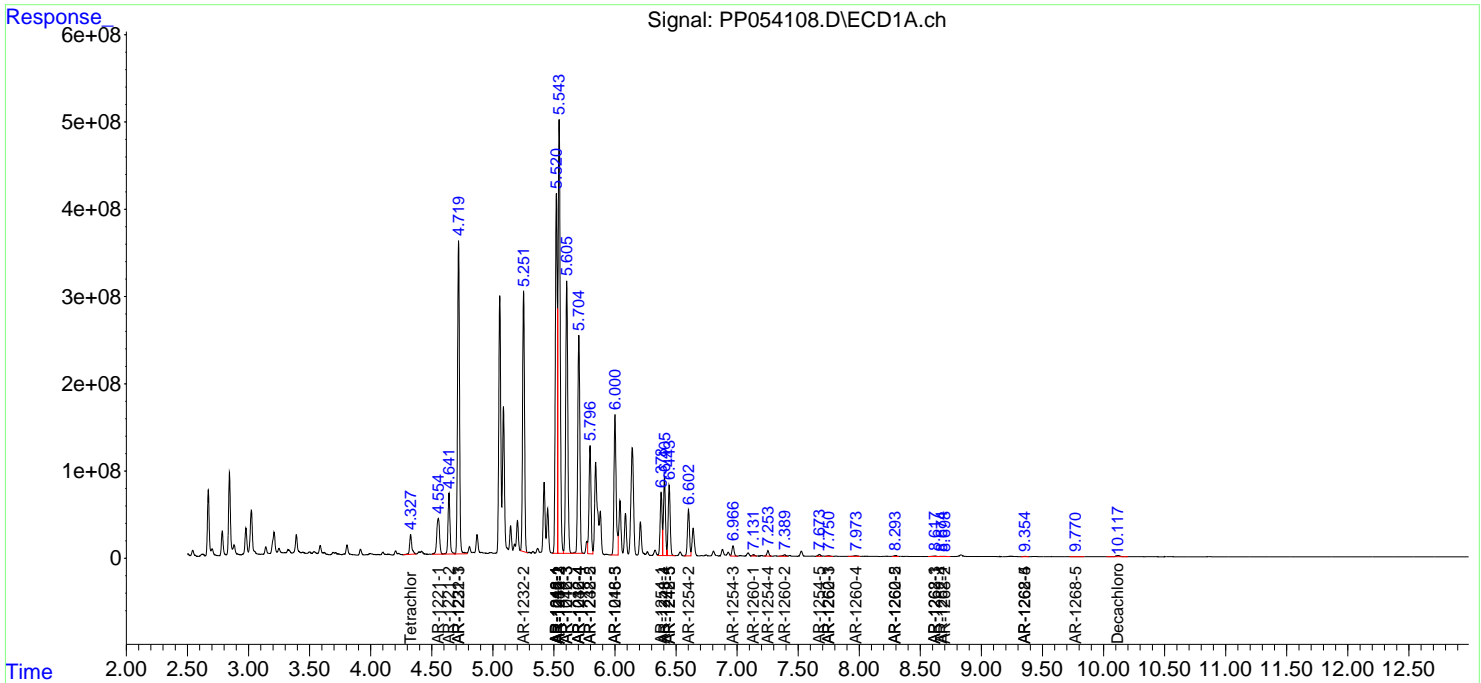
(f)=RT Delta > 1/2 Window (#)=Amounts differ by > 25% (m)=manual int.

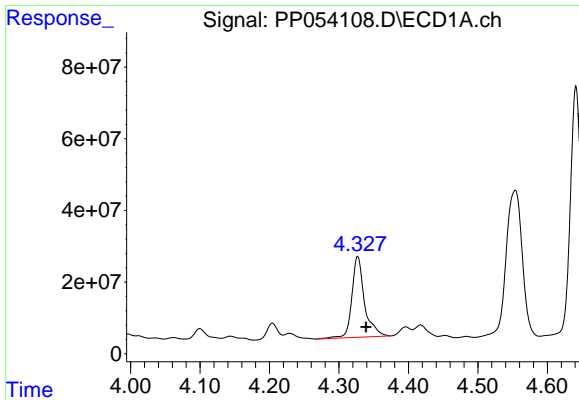
Data Path : Z:\pestpcbsrv\HPCHEM1\ECD_P\Data\PP122822\
 Data File : PP054108.D
 Signal(s) : Signal #1: ECD1A.ch Signal #2: ECD2B.ch
 Acq On : 28 Dec 2022 13:15
 Operator : YP\AJ
 Sample : N6213-08
 Misc :
 ALS Vial : 7 Sample Multiplier: 1

Instrument :
 ECD_P
 ClientSampleId :

Integration File signal 1: autoint1.e
 Integration File signal 2: autoint2.e
 Quant Time: Dec 28 21:08:43 2022
 Quant Method : Z:\pestpcbsrv\HPCHEM1\ECD_P\methods\PP121322.M
 Quant Title : GC EXTRACTABLES
 QLast Update : Wed Dec 14 05:38:40 2022
 Response via : Initial Calibration
 Integrator: ChemStation

Volume Inj. : 2 µl
 Signal #1 Phase : ZB-MR1 Signal #2 Phase: ZB-MR2
 Signal #1 Info : 30Mx0.32mmx 0.50µ Signal #2 Info : 30M x 0.32mm x 0.25µm

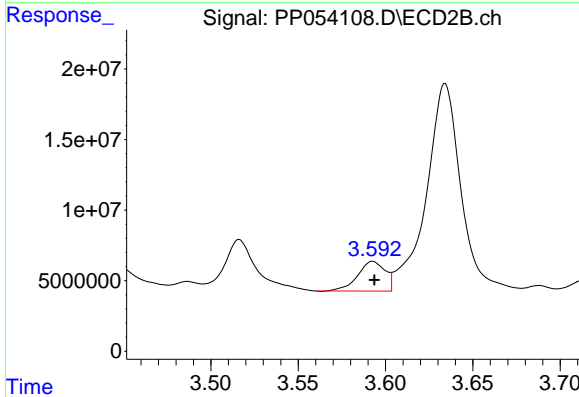




#1 Tetrachloro-m-xylene

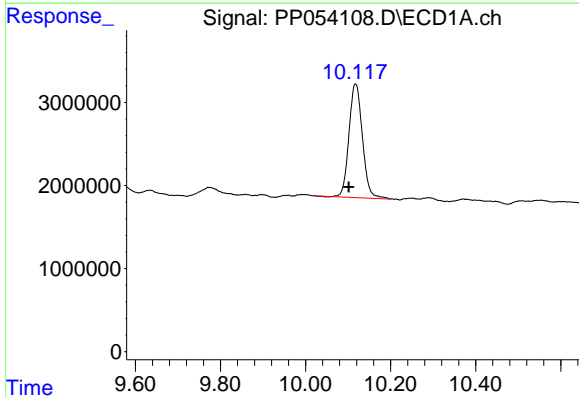
R.T.: 4.327 min
Delta R.T.: -0.012 min
Response: 285154649
Conc: 135.80 ng/ml

Instrument :
ECD_P
ClientSampleId :



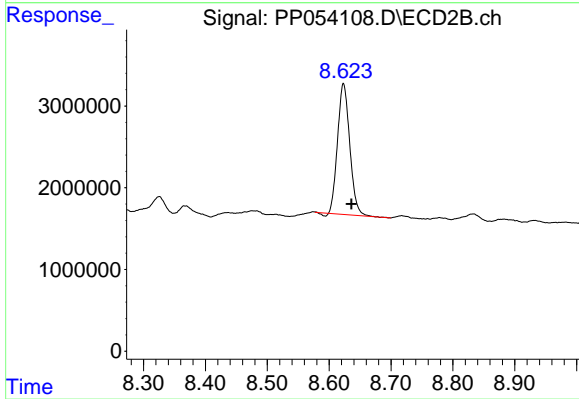
#1 Tetrachloro-m-xylene

R.T.: 3.593 min
Delta R.T.: 0.000 min
Response: 23038862
Conc: 14.75 ng/ml



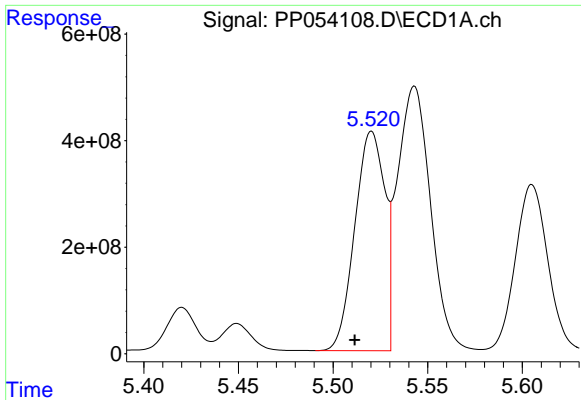
#2 Decachlorobiphenyl

R.T.: 10.117 min
Delta R.T.: 0.015 min
Response: 30018929
Conc: 17.68 ng/ml



#2 Decachlorobiphenyl

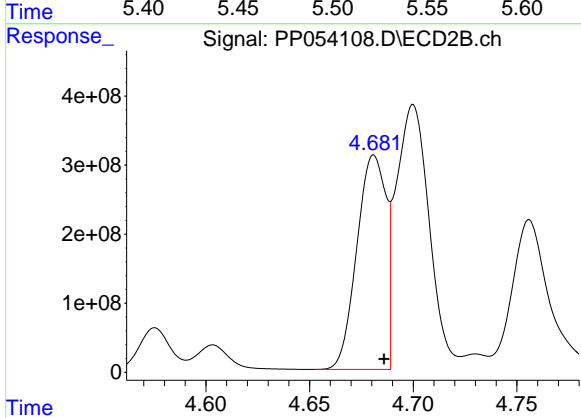
R.T.: 8.623 min
Delta R.T.: -0.013 min
Response: 21884445
Conc: 15.67 ng/ml



#3 AR-1016-1

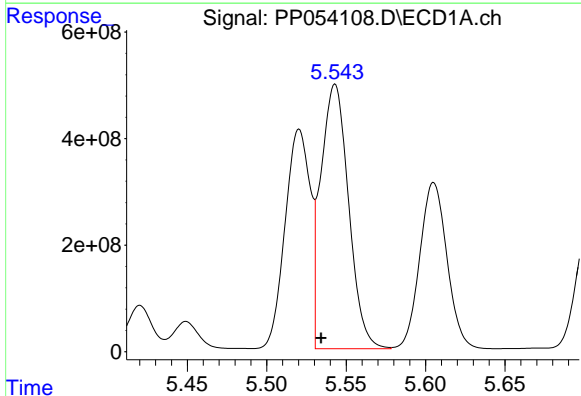
R.T.: 5.520 min
 Delta R.T.: 0.009 min
 Response: 4533295449
 Conc: 66853.68 ng/ml

Instrument :
 ECD_P
 ClientSampleId :



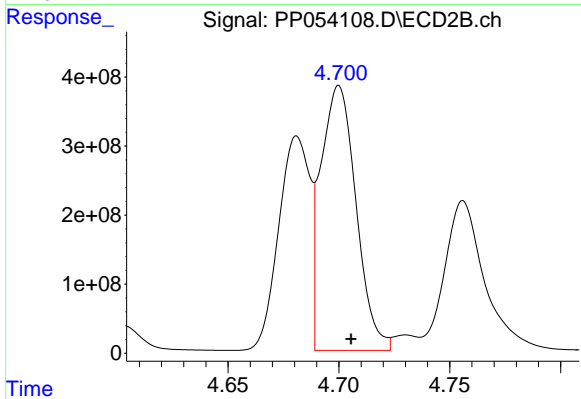
#3 AR-1016-1

R.T.: 4.681 min
 Delta R.T.: -0.005 min
 Response: 3030994720
 Conc: 65996.64 ng/ml



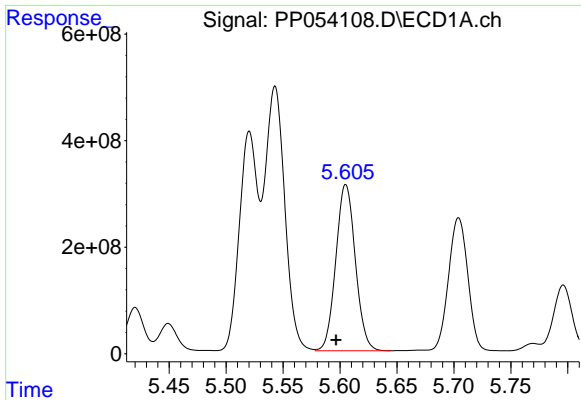
#4 AR-1016-2

R.T.: 5.543 min
 Delta R.T.: 0.009 min
 Response: 6046673042
 Conc: 60703.11 ng/ml



#4 AR-1016-2

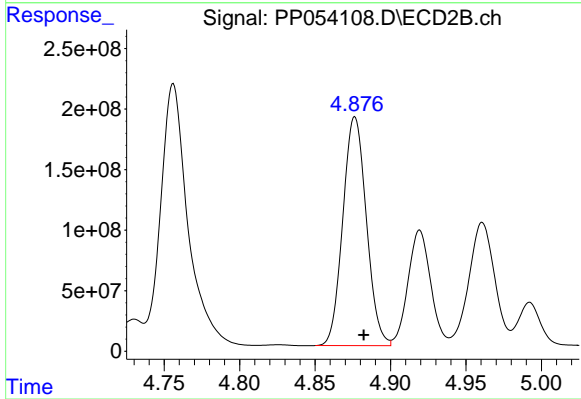
R.T.: 4.700 min
 Delta R.T.: -0.005 min
 Response: 4250879907
 Conc: 67842.61 ng/ml



#5 AR-1016-3

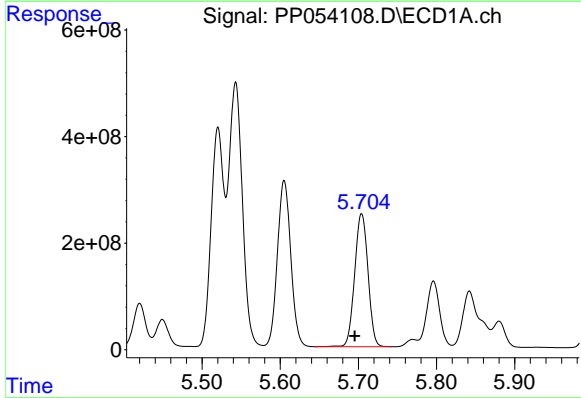
R.T.: 5.605 min
 Delta R.T.: 0.009 min
 Response: 3721443542
 Conc: 58882.67 ng/ml

Instrument :
 ECD_P
 ClientSampleId :



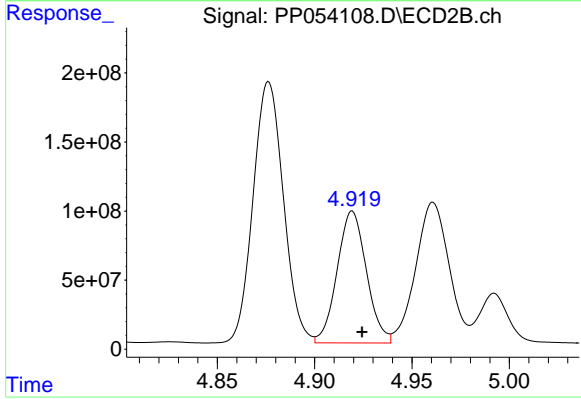
#5 AR-1016-3

R.T.: 4.876 min
 Delta R.T.: -0.006 min
 Response: 2052368529
 Conc: 60468.15 ng/ml



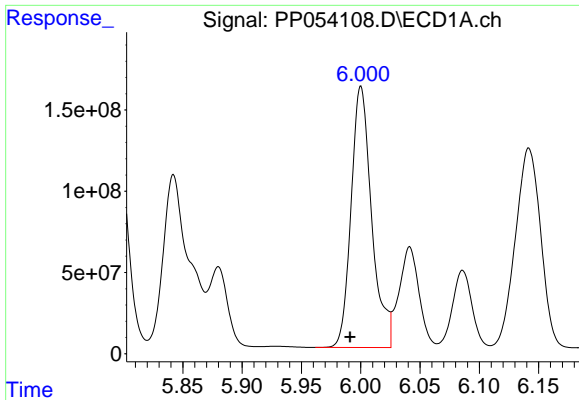
#6 AR-1016-4

R.T.: 5.704 min
 Delta R.T.: 0.009 min
 Response: 2948456079
 Conc: 59501.69 ng/ml



#6 AR-1016-4

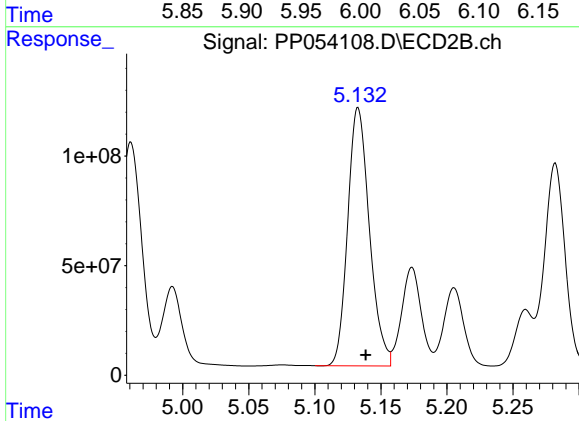
R.T.: 4.919 min
 Delta R.T.: -0.005 min
 Response: 1001716084
 Conc: 33616.24 ng/ml



#7 AR-1016-5

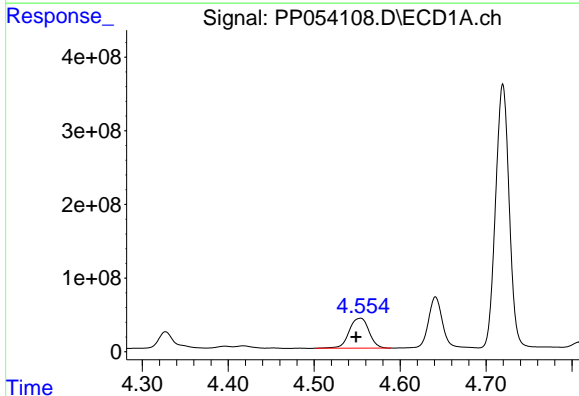
R.T.: 6.000 min
 Delta R.T.: 0.009 min
 Response: 1943424985
 Conc: 36922.12 ng/ml

Instrument :
 ECD_P
 ClientSampleId :



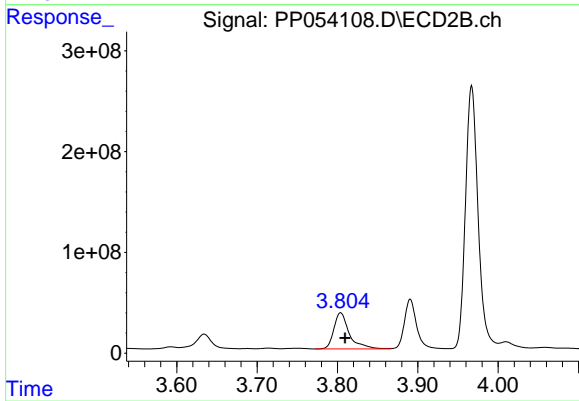
#7 AR-1016-5

R.T.: 5.133 min
 Delta R.T.: -0.006 min
 Response: 1348725021
 Conc: 37194.36 ng/ml



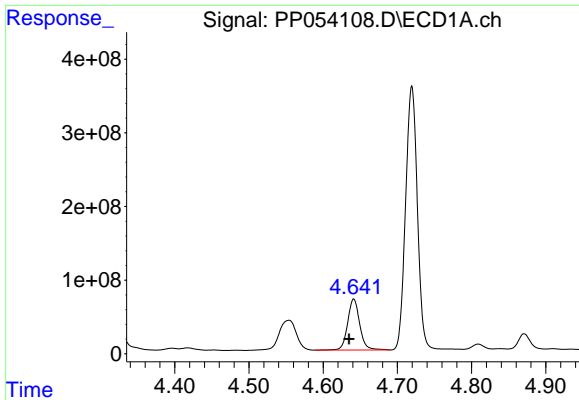
#8 AR-1221-1

R.T.: 4.554 min
 Delta R.T.: 0.005 min
 Response: 653446695
 Conc: 25364.78 ng/ml



#8 AR-1221-1

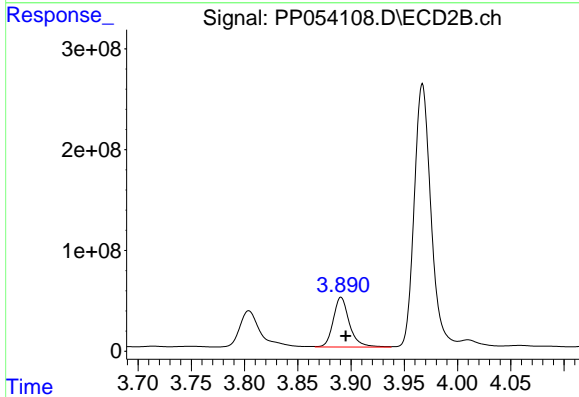
R.T.: 3.804 min
 Delta R.T.: -0.006 min
 Response: 485531278
 Conc: 25076.11 ng/ml



#9 AR-1221-2

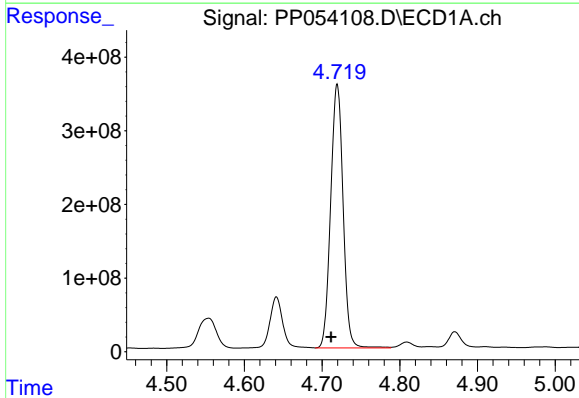
R.T.: 4.641 min
 Delta R.T.: 0.006 min
 Response: 788299059
 Conc: 40490.32 ng/ml

Instrument :
 ECD_P
 ClientSampleId :



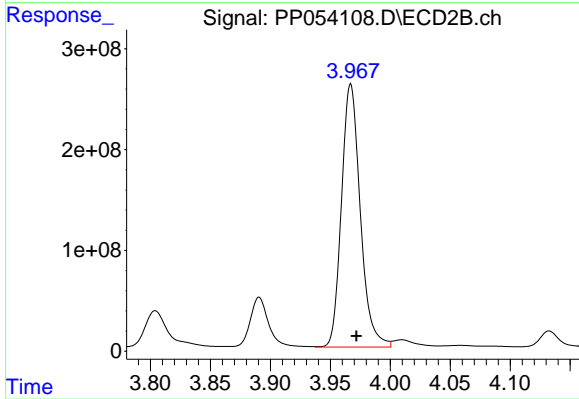
#9 AR-1221-2

R.T.: 3.891 min
 Delta R.T.: -0.004 min
 Response: 521350629
 Conc: 35666.48 ng/ml



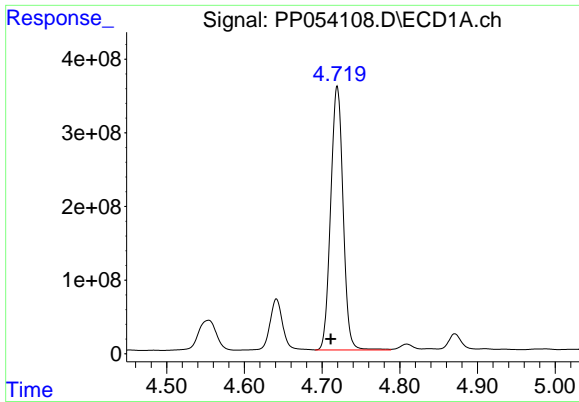
#10 AR-1221-3

R.T.: 4.720 min
 Delta R.T.: 0.008 min
 Response: 3973006636
 Conc: 68363.69 ng/ml



#10 AR-1221-3

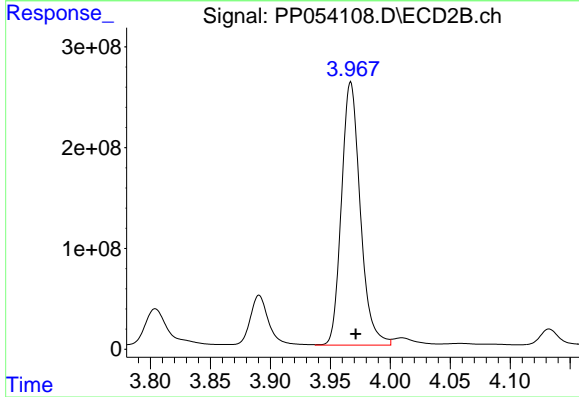
R.T.: 3.967 min
 Delta R.T.: -0.005 min
 Response: 2849789937
 Conc: 64067.61 ng/ml



#11 AR-1232-1

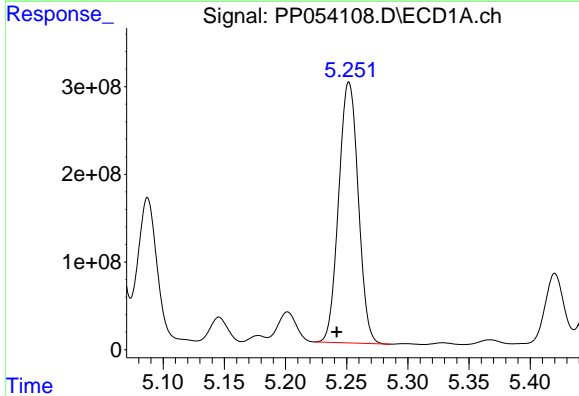
R.T.: 4.720 min
 Delta R.T.: 0.008 min
 Response: 3973006636
 Conc: 88704.98 ng/ml

Instrument :
 ECD_P
 ClientSampleId :



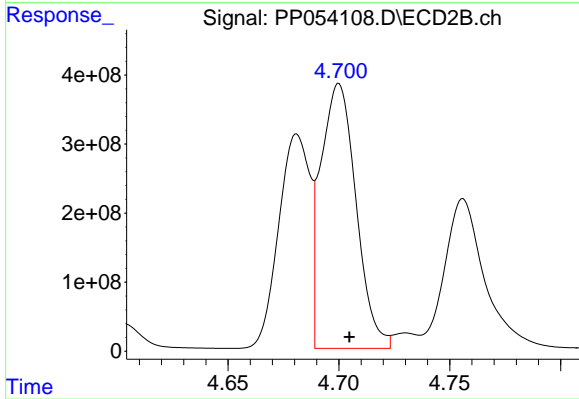
#11 AR-1232-1

R.T.: 3.967 min
 Delta R.T.: -0.004 min
 Response: 2849789937
 Conc: 82815.32 ng/ml



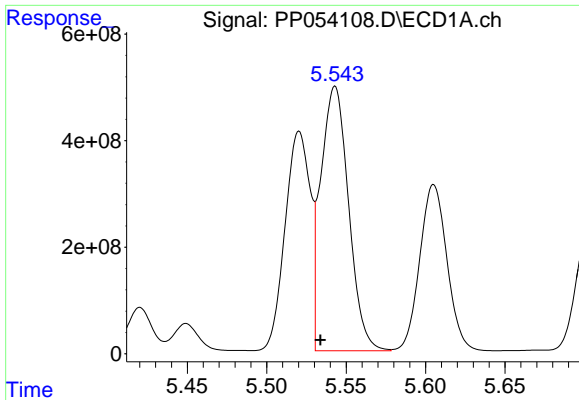
#12 AR-1232-2

R.T.: 5.252 min
 Delta R.T.: 0.010 min
 Response: 3307914111
 Conc: 128594.96 ng/ml



#12 AR-1232-2

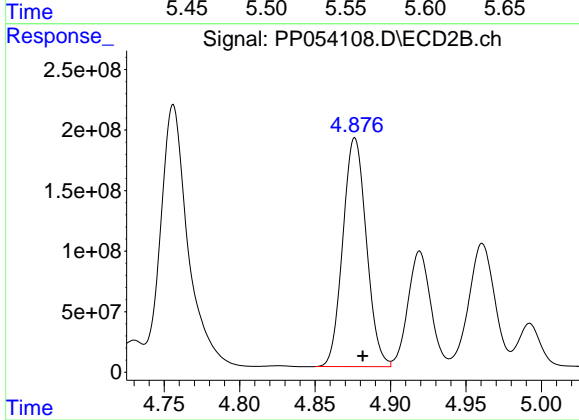
R.T.: 4.700 min
 Delta R.T.: -0.005 min
 Response: 4250879907
 Conc: 142425.94 ng/ml



#13 AR-1232-3

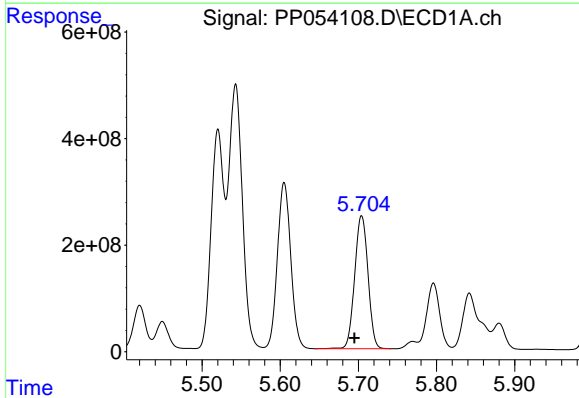
R.T.: 5.543 min
 Delta R.T.: 0.009 min
 Response: 6046673042
 Conc: 128825.55 ng/ml

Instrument :
 ECD_P
 ClientSampleId :



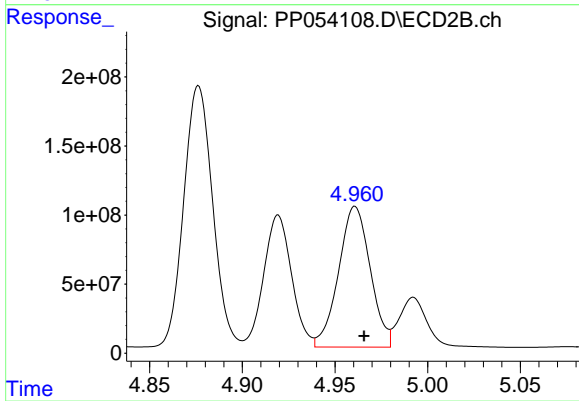
#13 AR-1232-3

R.T.: 4.876 min
 Delta R.T.: -0.005 min
 Response: 2052368529
 Conc: 129539.61 ng/ml



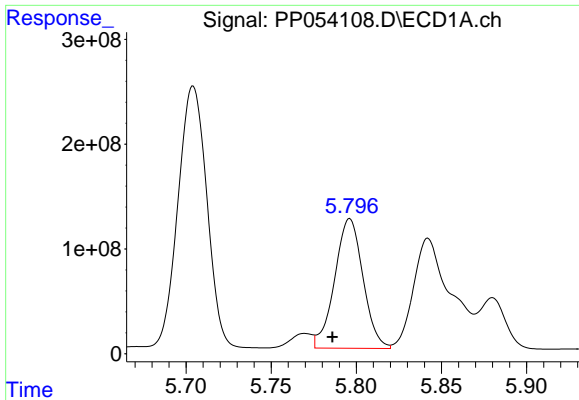
#14 AR-1232-4

R.T.: 5.704 min
 Delta R.T.: 0.009 min
 Response: 2948456079
 Conc: 124438.55 ng/ml



#14 AR-1232-4

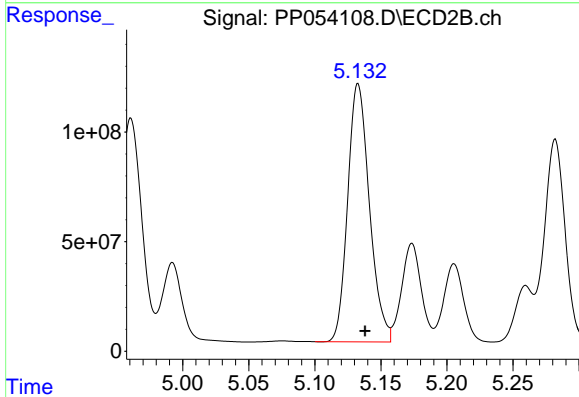
R.T.: 4.961 min
 Delta R.T.: -0.005 min
 Response: 1213419536
 Conc: 78525.13 ng/ml



#15 AR-1232-5

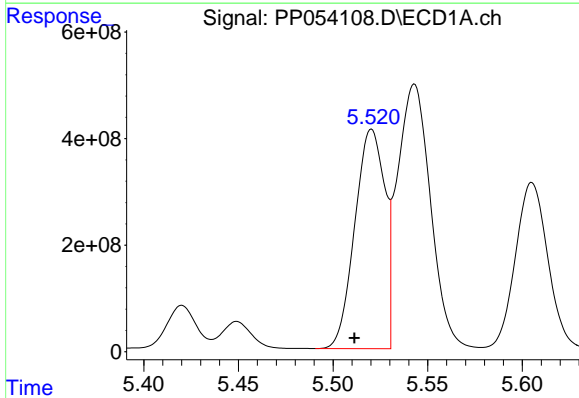
R.T.: 5.796 min
 Delta R.T.: 0.010 min
 Response: 1432721249
 Conc: 77685.37 ng/ml

Instrument :
 ECD_P
 ClientSampleId :



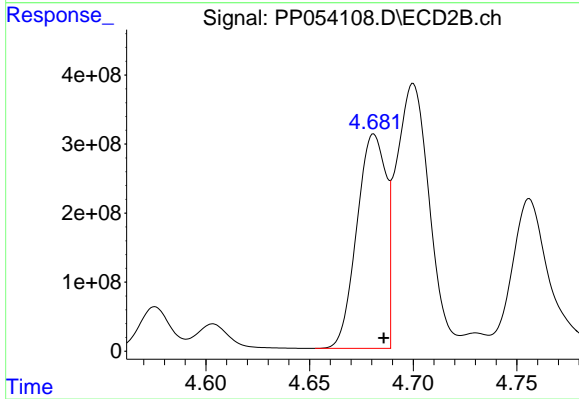
#15 AR-1232-5

R.T.: 5.133 min
 Delta R.T.: -0.005 min
 Response: 1348725021
 Conc: 81904.75 ng/ml



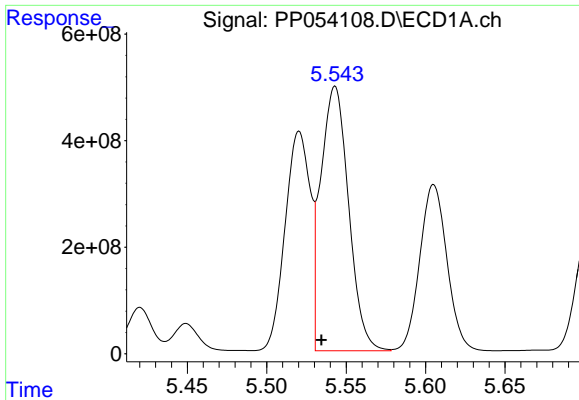
#16 AR-1242-1

R.T.: 5.520 min
 Delta R.T.: 0.009 min
 Response: 4533295449
 Conc: 86544.95 ng/ml



#16 AR-1242-1

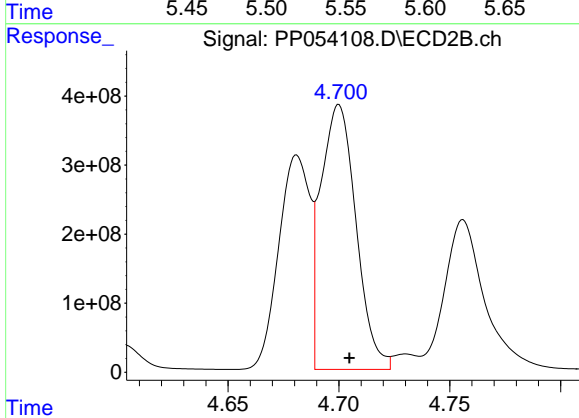
R.T.: 4.681 min
 Delta R.T.: -0.005 min
 Response: 3030994720
 Conc: 85588.65 ng/ml



#17 AR-1242-2

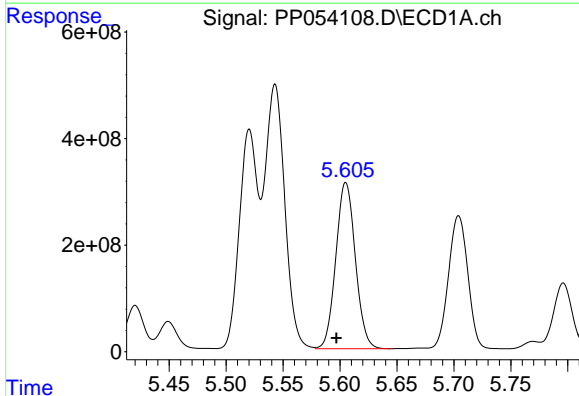
R.T.: 5.543 min
 Delta R.T.: 0.009 min
 Response: 6046673042
 Conc: 79361.54 ng/ml

Instrument :
 ECD_P
 ClientSampleId :



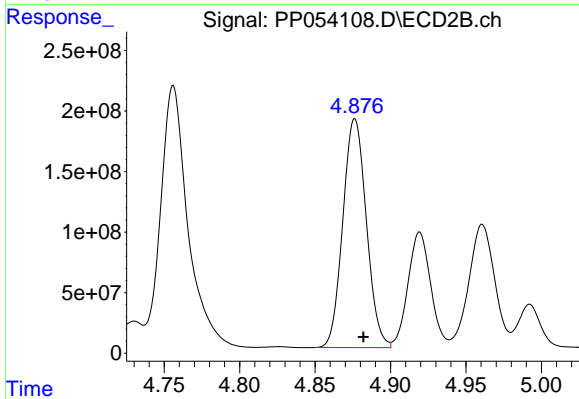
#17 AR-1242-2

R.T.: 4.700 min
 Delta R.T.: -0.005 min
 Response: 4250879907
 Conc: 88482.15 ng/ml



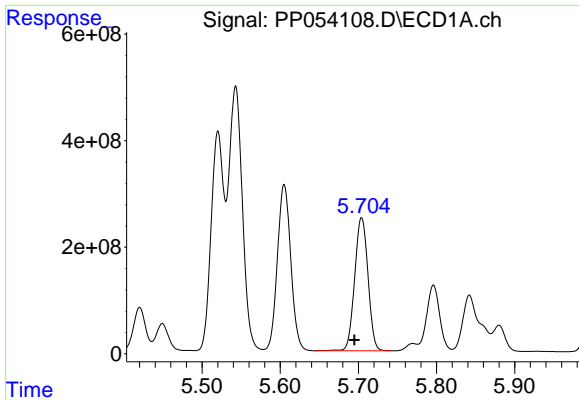
#18 AR-1242-3

R.T.: 5.605 min
 Delta R.T.: 0.008 min
 Response: 3721443542
 Conc: 75955.74 ng/ml



#18 AR-1242-3

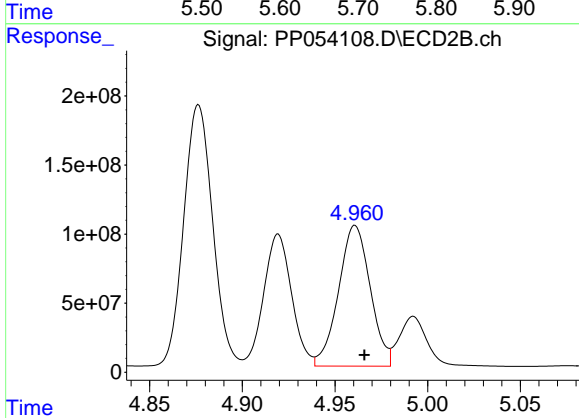
R.T.: 4.876 min
 Delta R.T.: -0.006 min
 Response: 2052368529
 Conc: 78722.78 ng/ml



#19 AR-1242-4

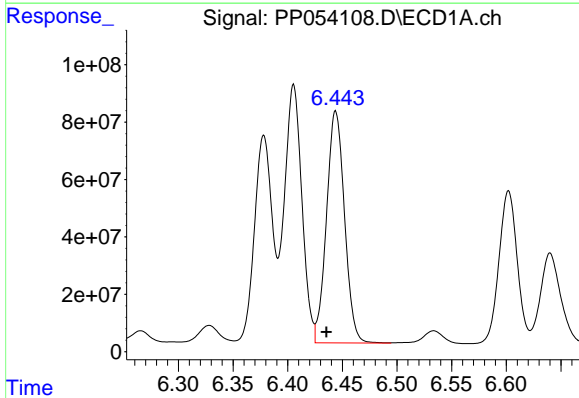
R.T.: 5.704 min
 Delta R.T.: 0.009 min
 Response: 2948456079
 Conc: 76805.10 ng/ml

Instrument :
 ECD_P
 ClientSampleId :



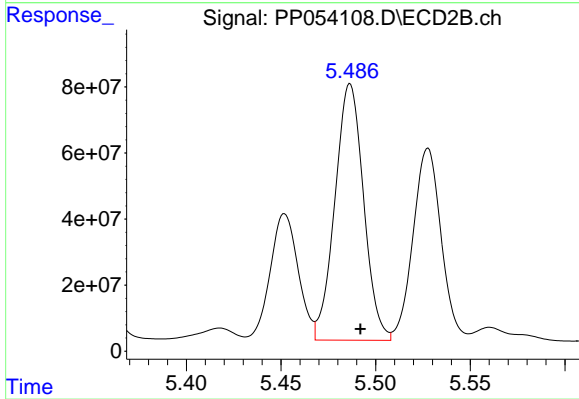
#19 AR-1242-4

R.T.: 4.961 min
 Delta R.T.: -0.005 min
 Response: 1213419536
 Conc: 42533.36 ng/ml



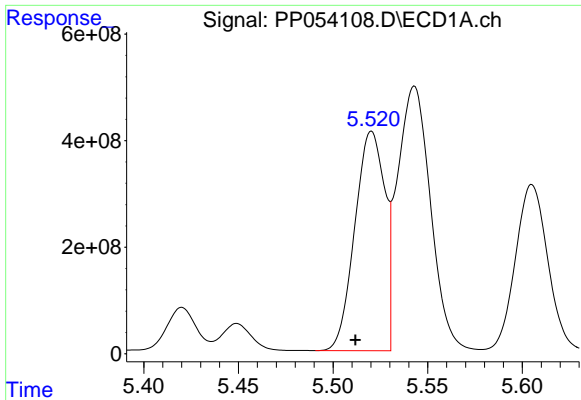
#20 AR-1242-5

R.T.: 6.444 min
 Delta R.T.: 0.009 min
 Response: 928303029
 Conc: 22760.25 ng/ml



#20 AR-1242-5

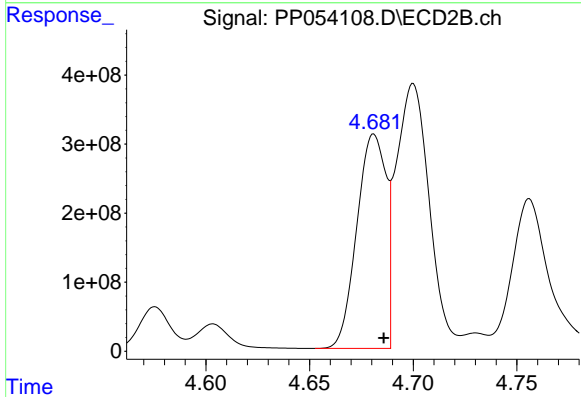
R.T.: 5.487 min
 Delta R.T.: -0.005 min
 Response: 819780612
 Conc: 26857.58 ng/ml



#21 AR-1248-1

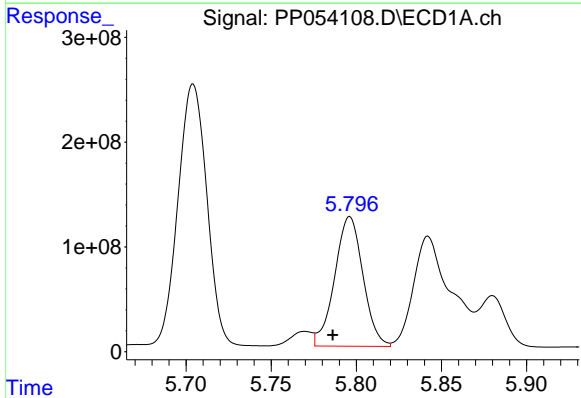
R.T.: 5.520 min
 Delta R.T.: 0.009 min
 Response: 4533295449
 Conc: 107562.34 ng/ml

Instrument :
 ECD_P
 ClientSampleId :



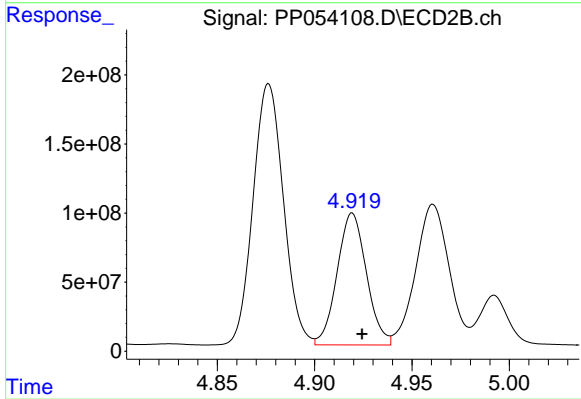
#21 AR-1248-1

R.T.: 4.681 min
 Delta R.T.: -0.005 min
 Response: 3030994720
 Conc: 106547.21 ng/ml



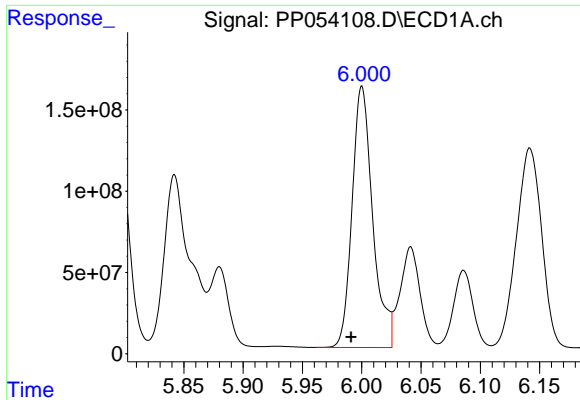
#22 AR-1248-2

R.T.: 5.796 min
 Delta R.T.: 0.010 min
 Response: 1432721249
 Conc: 22669.54 ng/ml



#22 AR-1248-2

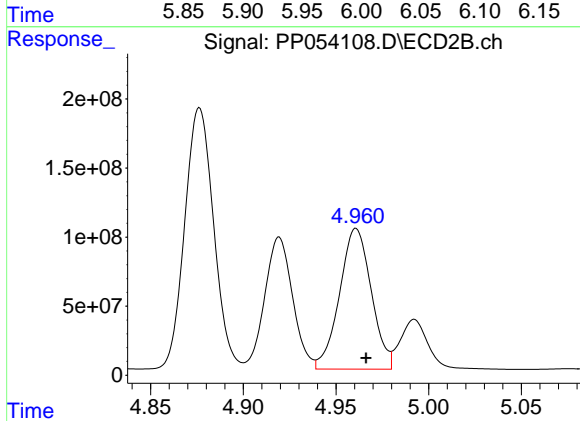
R.T.: 4.919 min
 Delta R.T.: -0.005 min
 Response: 1001716084
 Conc: 24214.33 ng/ml



#23 AR-1248-3

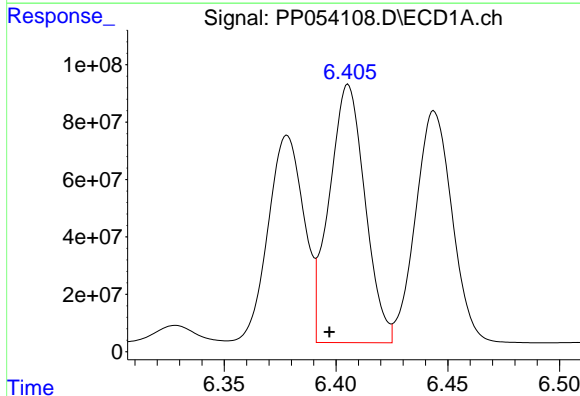
R.T.: 6.000 min
 Delta R.T.: 0.009 min
 Response: 1943424985
 Conc: 27745.45 ng/ml

Instrument :
 ECD_P
 ClientSampleId :



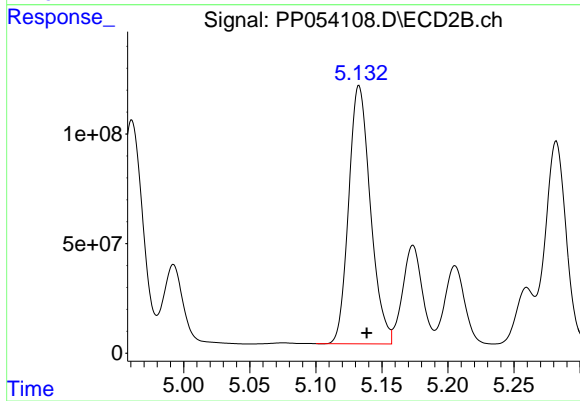
#23 AR-1248-3

R.T.: 4.961 min
 Delta R.T.: -0.005 min
 Response: 1213419536
 Conc: 28892.62 ng/ml



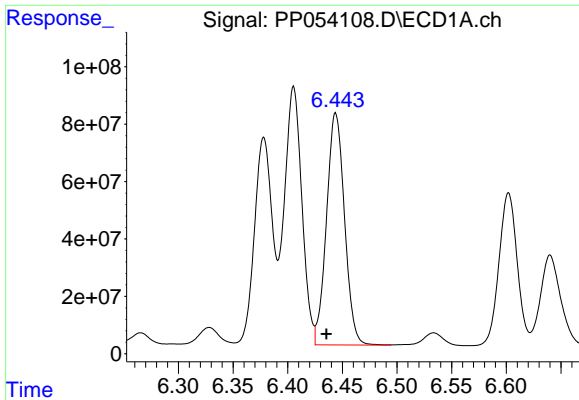
#24 AR-1248-4

R.T.: 6.405 min
 Delta R.T.: 0.008 min
 Response: 1000685764
 Conc: 14188.79 ng/ml



#24 AR-1248-4

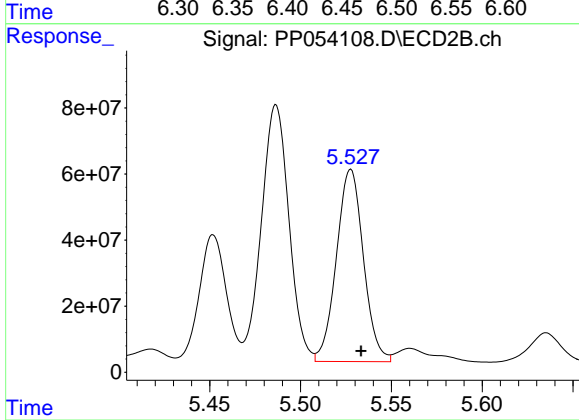
R.T.: 5.133 min
 Delta R.T.: -0.006 min
 Response: 1348725021
 Conc: 28031.69 ng/ml



#25 AR-1248-5

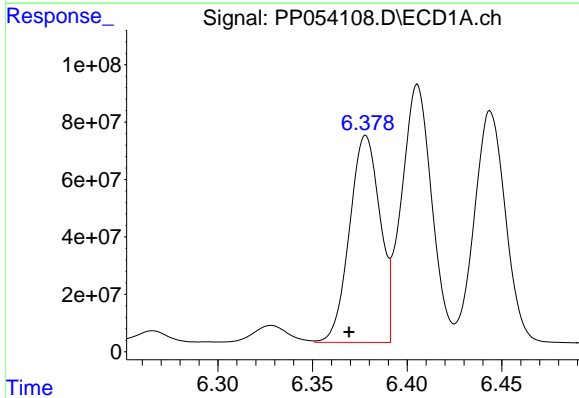
R.T.: 6.444 min
 Delta R.T.: 0.009 min
 Response: 928303029
 Conc: 13173.74 ng/ml

Instrument :
 ECD_P
 ClientSampleId :



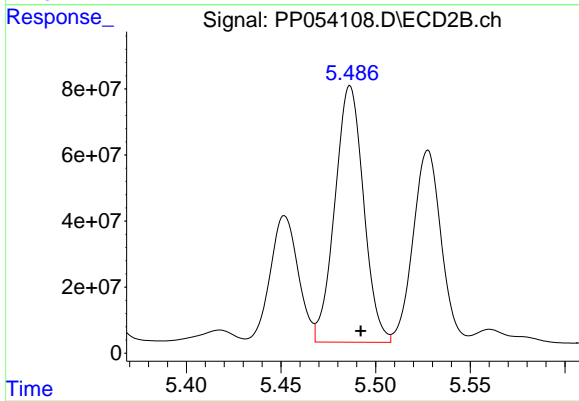
#25 AR-1248-5

R.T.: 5.528 min
 Delta R.T.: -0.006 min
 Response: 602782003
 Conc: 16053.32 ng/ml



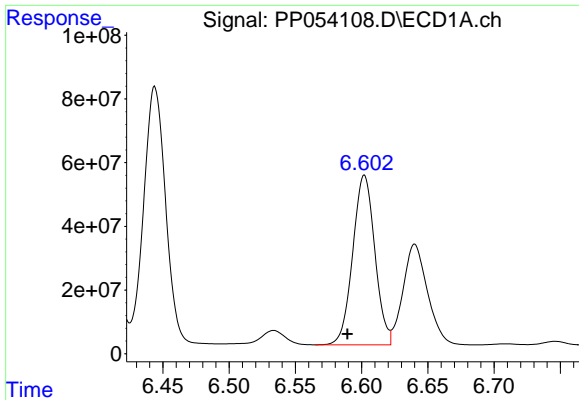
#26 AR-1254-1

R.T.: 6.378 min
 Delta R.T.: 0.009 min
 Response: 807652004
 Conc: 10422.33 ng/ml



#26 AR-1254-1

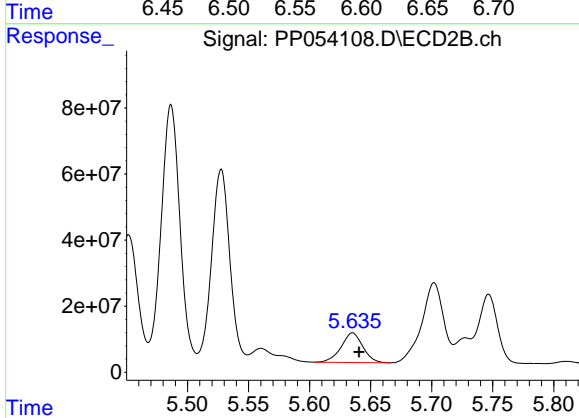
R.T.: 5.487 min
 Delta R.T.: -0.006 min
 Response: 819780612
 Conc: 12518.92 ng/ml



#27 AR-1254-2

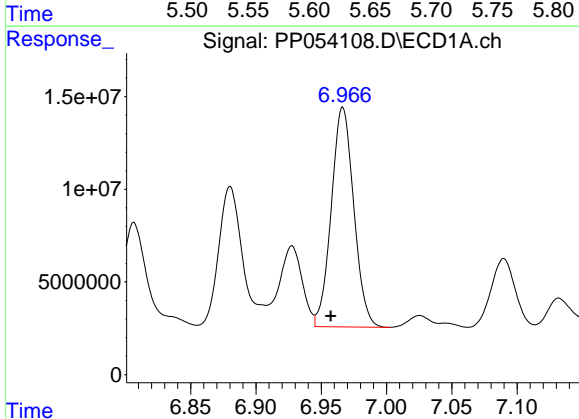
R.T.: 6.602 min
 Delta R.T.: 0.013 min
 Response: 618374674
 Conc: 5314.93 ng/ml

Instrument :
 ECD_P
 ClientSampleId :



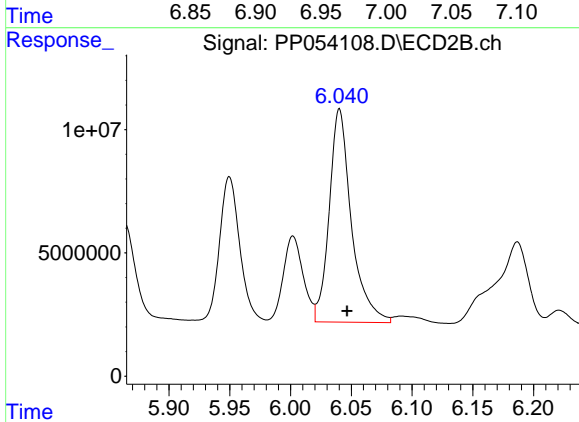
#27 AR-1254-2

R.T.: 5.635 min
 Delta R.T.: -0.005 min
 Response: 111196774
 Conc: 1906.68 ng/ml



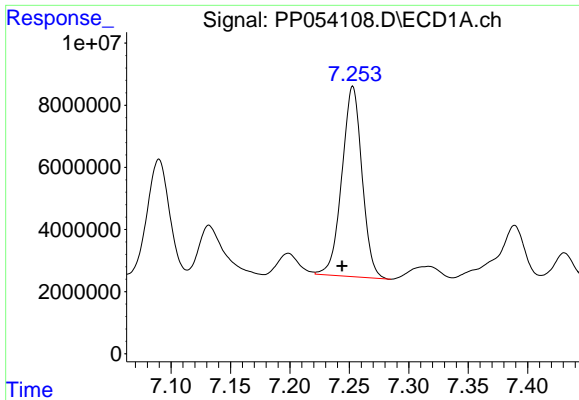
#28 AR-1254-3

R.T.: 6.966 min
 Delta R.T.: 0.009 min
 Response: 142201498
 Conc: 1214.08 ng/ml



#28 AR-1254-3

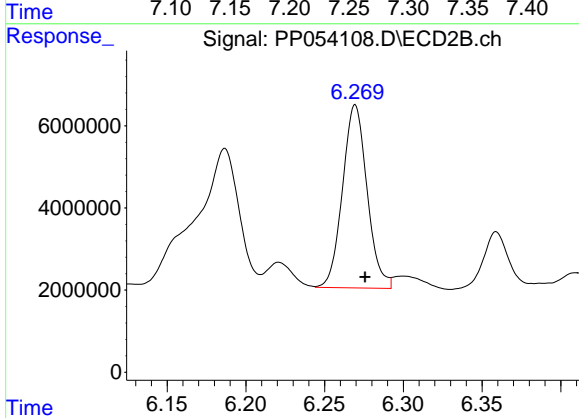
R.T.: 6.040 min
 Delta R.T.: -0.006 min
 Response: 110216857
 Conc: 1252.86 ng/ml



#29 AR-1254-4

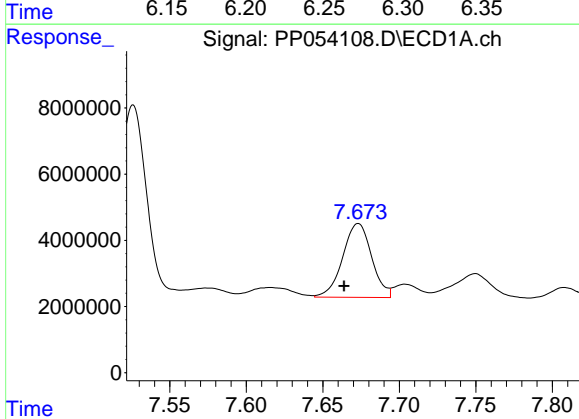
R.T.: 7.253 min
 Delta R.T.: 0.009 min
 Response: 72253656
 Conc: 911.39 ng/ml

Instrument :
 ECD_P
 ClientSampleId :



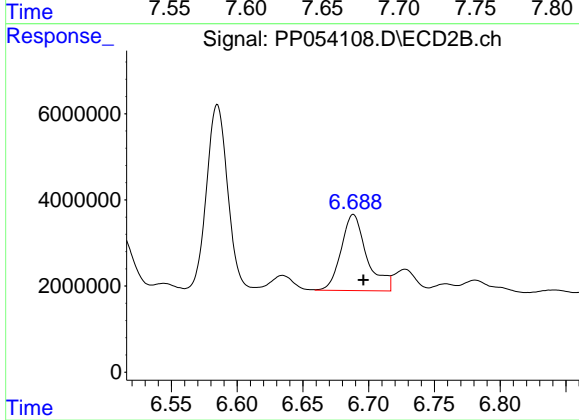
#29 AR-1254-4

R.T.: 6.270 min
 Delta R.T.: -0.006 min
 Response: 48434933
 Conc: 1057.18 ng/ml



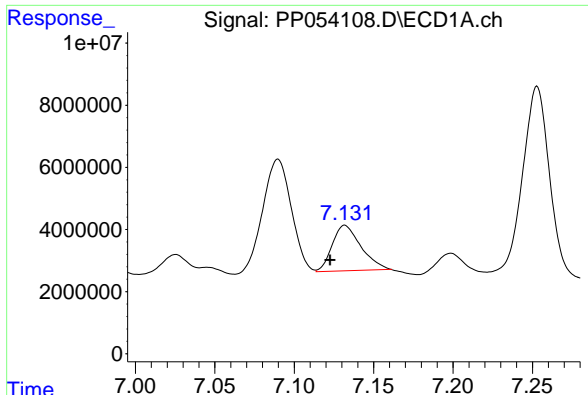
#30 AR-1254-5

R.T.: 7.673 min
 Delta R.T.: 0.009 min
 Response: 29509570
 Conc: 302.58 ng/ml



#30 AR-1254-5

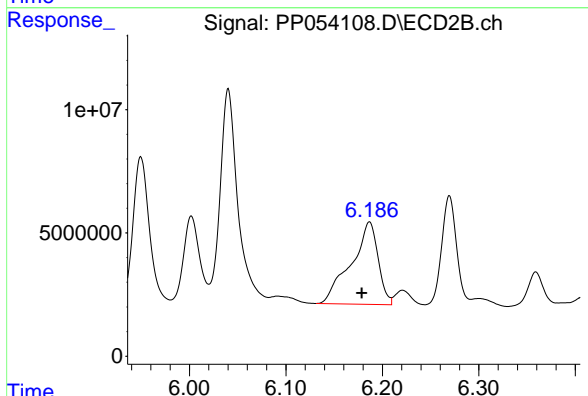
R.T.: 6.688 min
 Delta R.T.: -0.008 min
 Response: 24067833
 Conc: 308.82 ng/ml



#31 AR-1260-1

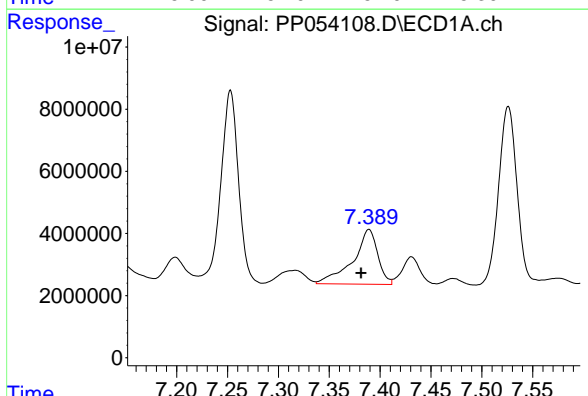
R.T.: 7.132 min
 Delta R.T.: 0.009 min
 Response: 17212988
 Conc: 178.24 ng/ml

Instrument :
 ECD_P
 ClientSampleId :



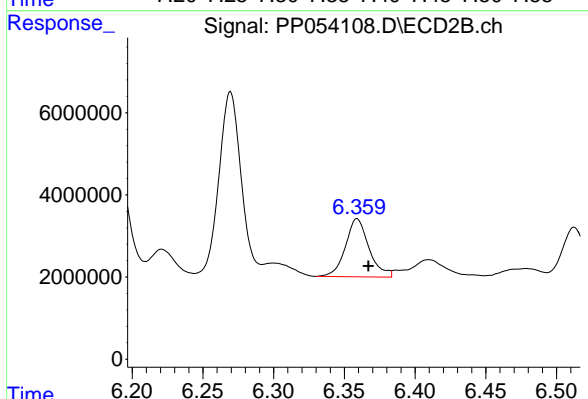
#31 AR-1260-1

R.T.: 6.187 min
 Delta R.T.: 0.008 min
 Response: 64894525
 Conc: 994.87 ng/ml



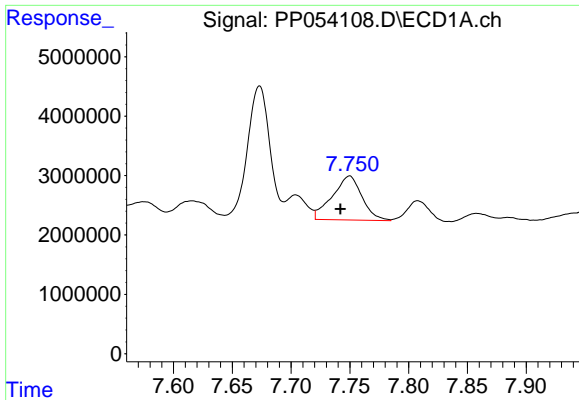
#32 AR-1260-2

R.T.: 7.389 min
 Delta R.T.: 0.008 min
 Response: 30043956
 Conc: 271.96 ng/ml



#32 AR-1260-2

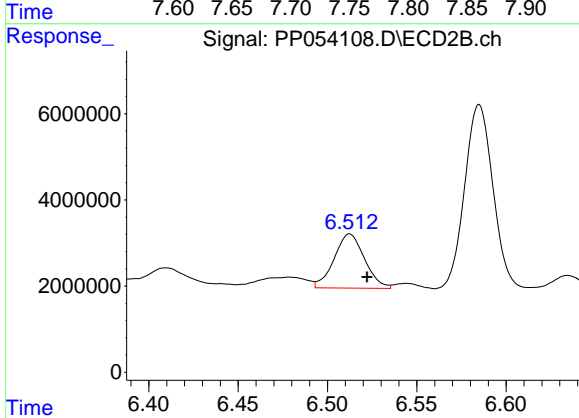
R.T.: 6.359 min
 Delta R.T.: -0.008 min
 Response: 16424194
 Conc: 218.10 ng/ml



#33 AR-1260-3

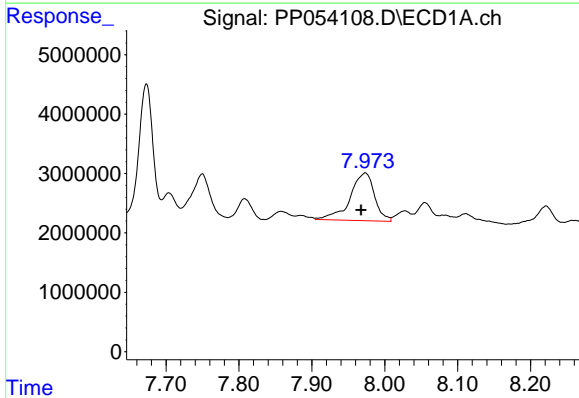
R.T.: 7.750 min
 Delta R.T.: 0.008 min
 Response: 12991438
 Conc: 171.82 ng/ml

Instrument :
 ECD_P
 ClientSampleId :



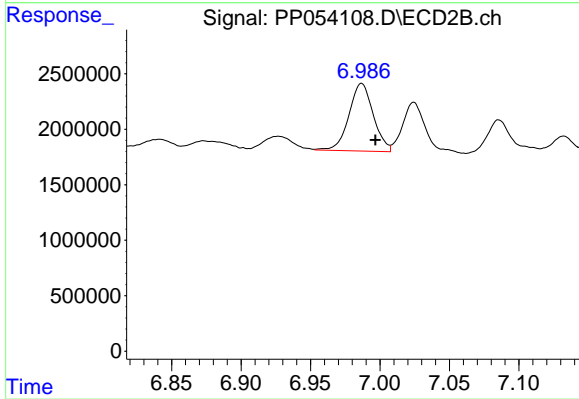
#33 AR-1260-3

R.T.: 6.512 min
 Delta R.T.: -0.010 min
 Response: 14906471
 Conc: 205.65 ng/ml



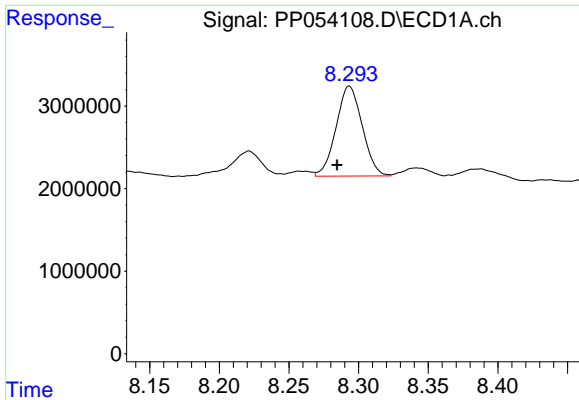
#34 AR-1260-4

R.T.: 7.973 min
 Delta R.T.: 0.006 min
 Response: 18754185
 Conc: 199.82 ng/ml



#34 AR-1260-4

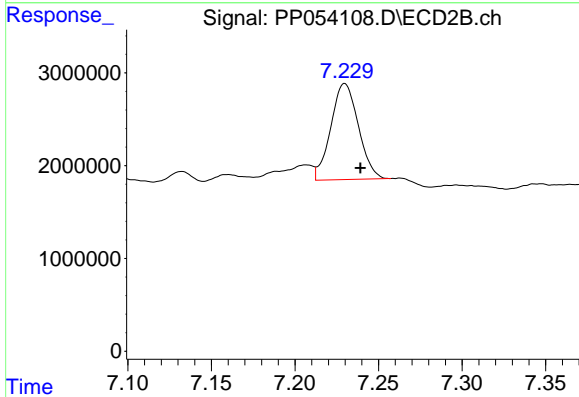
R.T.: 6.987 min
 Delta R.T.: -0.010 min
 Response: 7446460
 Conc: 137.24 ng/ml



#35 AR-1260-5

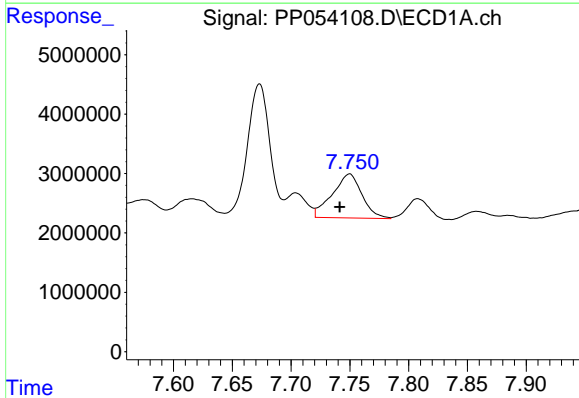
R.T.: 8.293 min
 Delta R.T.: 0.009 min
 Response: 14224609
 Conc: 89.71 ng/ml

Instrument :
 ECD_P
 ClientSampleId :



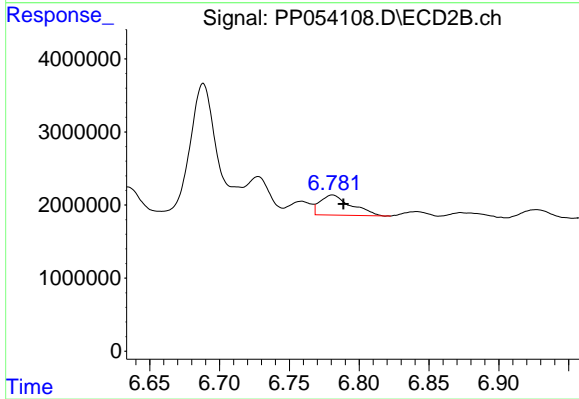
#35 AR-1260-5

R.T.: 7.230 min
 Delta R.T.: -0.009 min
 Response: 11898753
 Conc: 99.50 ng/ml



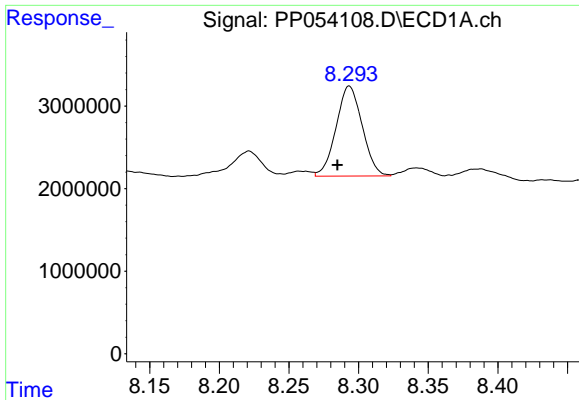
#36 AR-1262-1

R.T.: 7.750 min
 Delta R.T.: 0.008 min
 Response: 12991438
 Conc: 108.53 ng/ml



#36 AR-1262-1

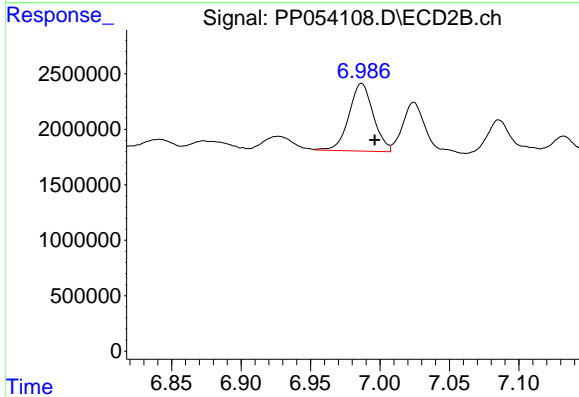
R.T.: 6.781 min
 Delta R.T.: -0.008 min
 Response: 4225339
 Conc: 118.47 ng/ml



#37 AR-1262-2

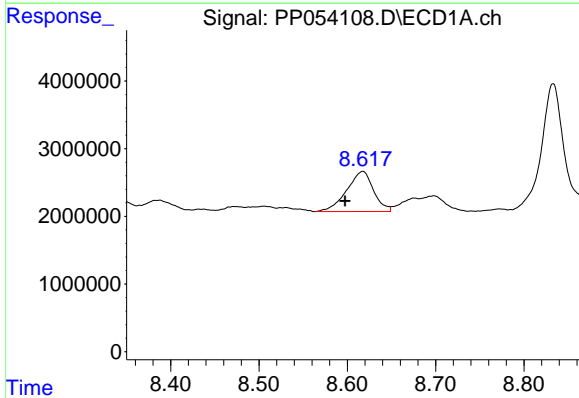
R.T.: 8.293 min
 Delta R.T.: 0.009 min
 Response: 14224609
 Conc: 74.18 ng/ml

Instrument :
 ECD_P
 ClientSampleId :



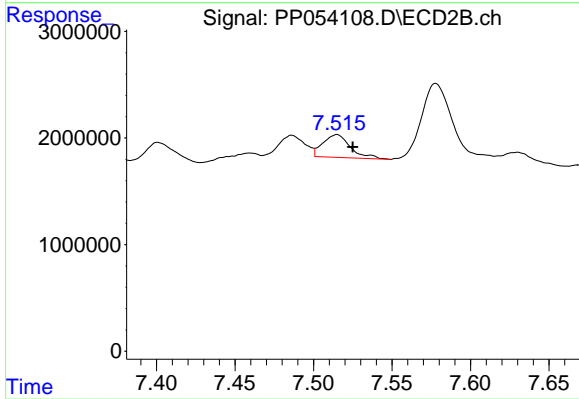
#37 AR-1262-2

R.T.: 6.987 min
 Delta R.T.: -0.009 min
 Response: 7446460
 Conc: 95.80 ng/ml



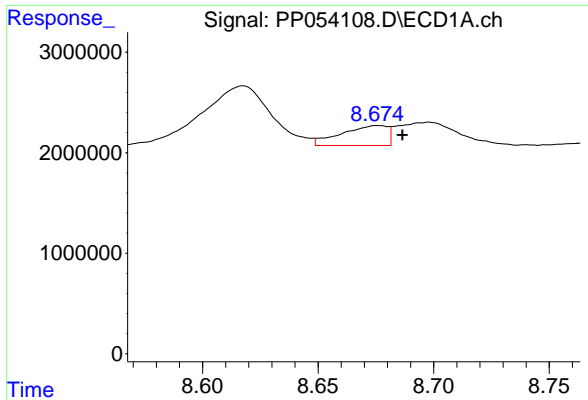
#38 AR-1262-3

R.T.: 8.618 min
 Delta R.T.: 0.020 min
 Response: 12549766
 Conc: 90.57 ng/ml



#38 AR-1262-3

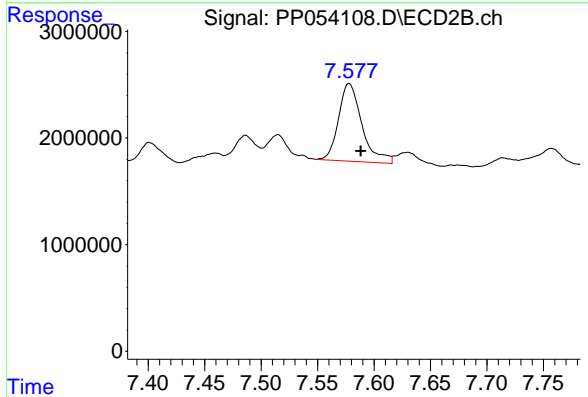
R.T.: 7.515 min
 Delta R.T.: -0.010 min
 Response: 2605764
 Conc: 41.36 ng/ml



#39 AR-1262-4

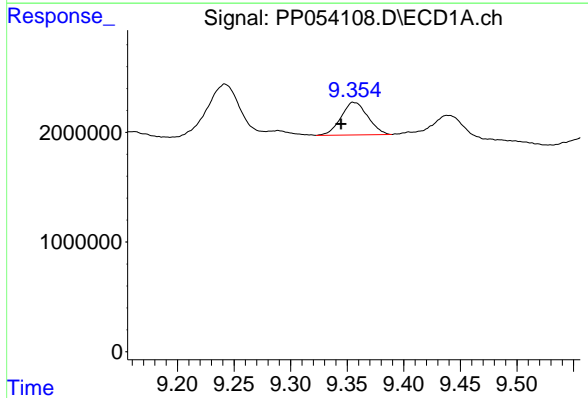
R.T.: 8.676 min
 Delta R.T.: -0.011 min
 Response: 2766238
 Conc: 44.45 ng/ml

Instrument :
 ECD_P
 ClientSampleId :



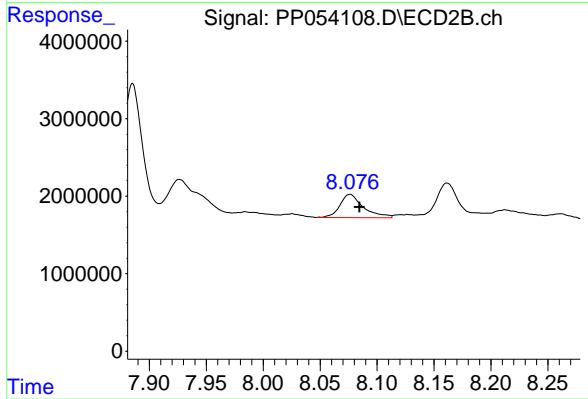
#39 AR-1262-4

R.T.: 7.578 min
 Delta R.T.: -0.010 min
 Response: 10505450
 Conc: 91.88 ng/ml



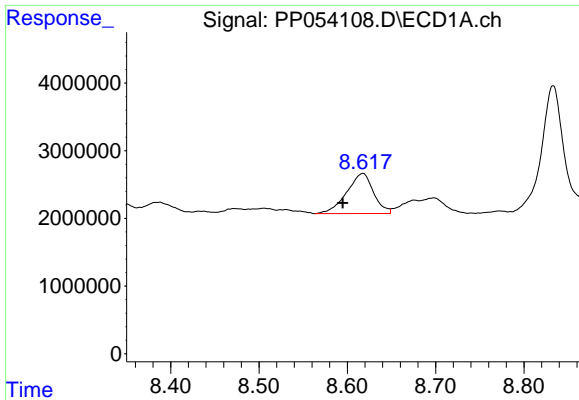
#40 AR-1262-5

R.T.: 9.356 min
 Delta R.T.: 0.011 min
 Response: 4890138
 Conc: 69.20 ng/ml



#40 AR-1262-5

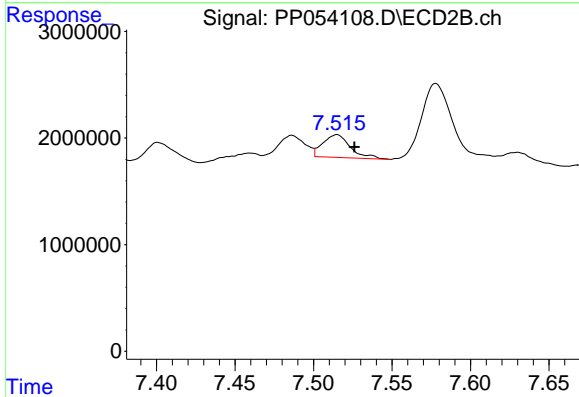
R.T.: 8.076 min
 Delta R.T.: -0.008 min
 Response: 4312020
 Conc: 86.56 ng/ml



#41 AR-1268-1

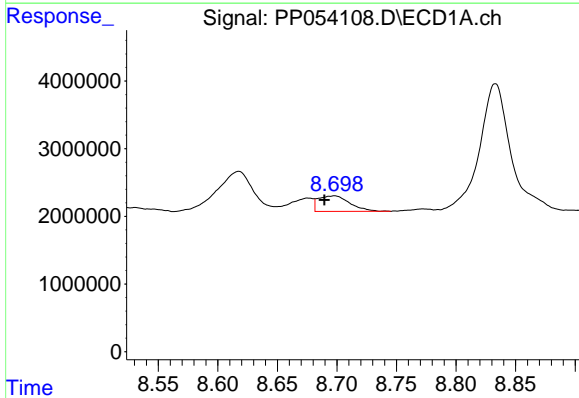
R.T.: 8.618 min
 Delta R.T.: 0.023 min
 Response: 12549766
 Conc: 51.42 ng/ml

Instrument :
 ECD_P
 ClientSampleId :



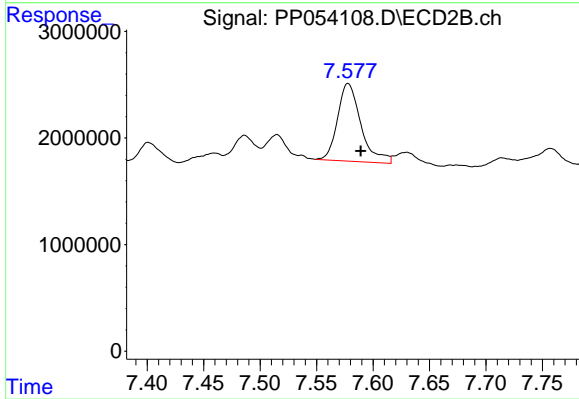
#41 AR-1268-1

R.T.: 7.515 min
 Delta R.T.: -0.011 min
 Response: 2605764
 Conc: 14.40 ng/ml



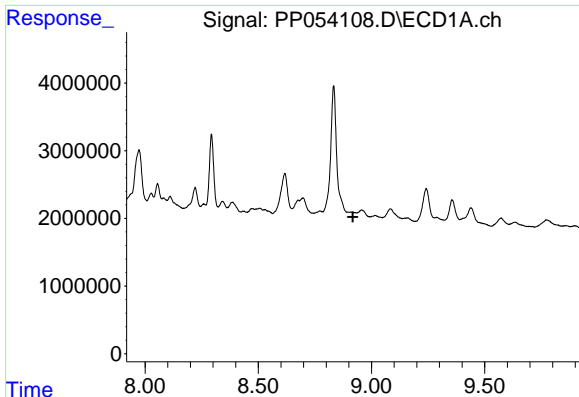
#42 AR-1268-2

R.T.: 8.698 min
 Delta R.T.: 0.009 min
 Response: 4229776
 Conc: 18.61 ng/ml



#42 AR-1268-2

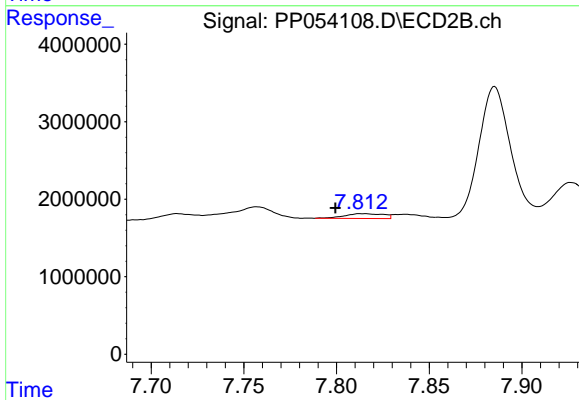
R.T.: 7.578 min
 Delta R.T.: -0.011 min
 Response: 10505450
 Conc: 61.56 ng/ml



#43 AR-1268-3

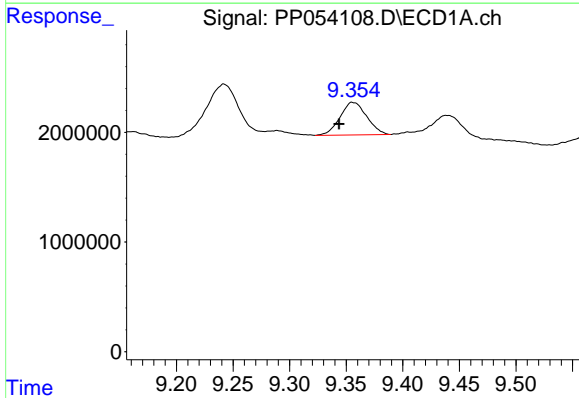
R.T.: 8.909 min
 Delta R.T.: -0.009 min
 Response: -478481
 Conc: N.D.

Instrument :
 ECD_P
 ClientSampleId :



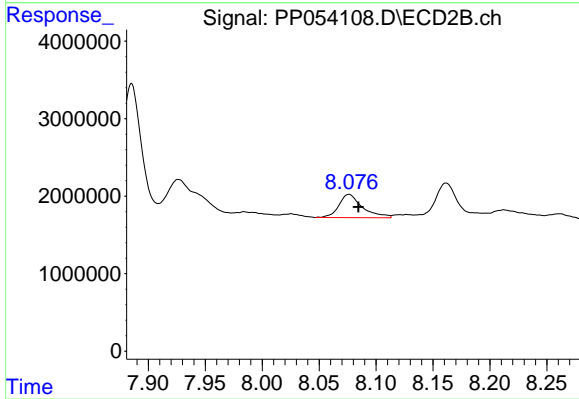
#43 AR-1268-3

R.T.: 7.813 min
 Delta R.T.: 0.014 min
 Response: 937380
 Conc: 6.35 ng/ml



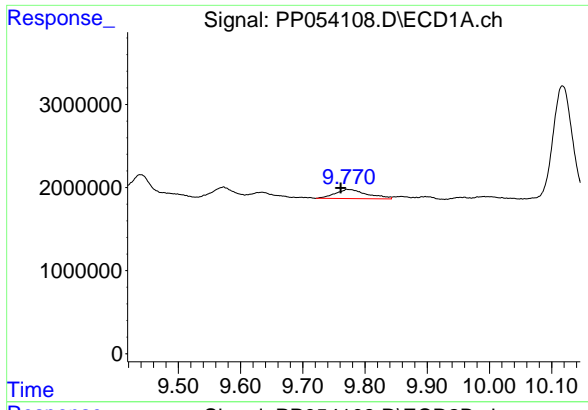
#44 AR-1268-4

R.T.: 9.356 min
 Delta R.T.: 0.012 min
 Response: 4890138
 Conc: 63.53 ng/ml



#44 AR-1268-4

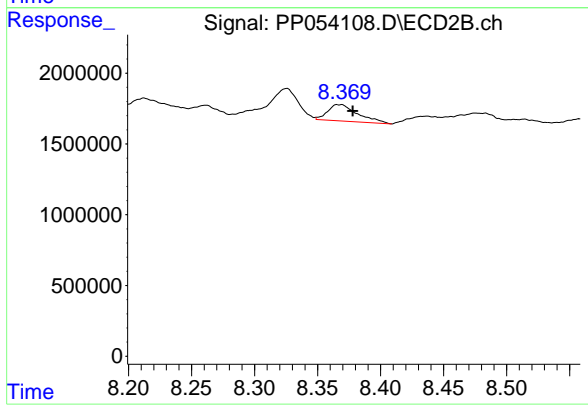
R.T.: 8.076 min
 Delta R.T.: -0.008 min
 Response: 4312020
 Conc: 77.37 ng/ml



#45 AR-1268-5

R.T.: 9.771 min
Delta R.T.: 0.011 min
Response: 3915990
Conc: 6.66 ng/ml

Instrument :
ECD_P
ClientSampleId :



#45 AR-1268-5

R.T.: 8.368 min
Delta R.T.: -0.010 min
Response: 1924816
Conc: 4.07 ng/ml