

Data Path : Z:\pestpcbsrv\HPCHEM1\ECD_P\Data\PP122922\
 Data File : PP054140.D
 Signal(s) : Signal #1: ECD1A.ch Signal #2: ECD2B.ch
 Acq On : 29 Dec 2022 16:41
 Operator : YP\AJ
 Sample : AR1660ICC1000
 Misc :
 ALS Vial : 3 Sample Multiplier: 1

Instrument :
 ECD_P
ClientSampleId :
 AR1660ICC1000

Integration File signal 1: autoint1.e
 Integration File signal 2: autoint2.e
 Quant Time: Dec 30 02:36:56 2022
 Quant Method : Z:\pestpcbsrv\HPCHEM1\ECD_P\methods\PP122922.M
 Quant Title : GC EXTRACTABLES
 QLast Update : Fri Dec 30 02:36:20 2022
 Response via : Initial Calibration
 Integrator: ChemStation

Volume Inj. : 2 µl
 Signal #1 Phase : ZB-MR1 Signal #2 Phase: ZB-MR2
 Signal #1 Info : 30Mx0.32mmx 0.50µ Signal #2 Info : 30M x 0.32mm x 0.25µm

Compound	RT#1	RT#2	Resp#1	Resp#2	ng/ml	ng/ml

System Monitoring Compounds						
1) SA Tetrachlo...	4.340	3.589	168.2E6	150.2E6	96.137	97.242
2) SA Decachlor...	10.101	8.615	118.8E6	134.1E6	90.432	94.031
Target Compounds						
3) L1 AR-1016-1	5.512	4.678	56736506	46046861	939.556	947.172
4) L1 AR-1016-2	5.534	4.697	82067609	65611154	932.168	954.343
5) L1 AR-1016-3	5.596	4.873	51532664	35418243	920.508	942.728
6) L1 AR-1016-4	5.695	4.915	41941029	30314787	932.637	915.765
7) L1 AR-1016-5	5.991	5.129	44408870	38387731	910.217	923.907
31) L7 AR-1260-1	7.122	6.167	79680121	75840272	918.349	953.537
32) L7 AR-1260-2	7.380	6.355	95778666	87756923	926.756	966.591
33) L7 AR-1260-3	7.741	6.510	69098138	84243194	906.841	965.644
34) L7 AR-1260-4	7.966	6.983	71591169	61108793	912.098	940.015
35) L7 AR-1260-5	8.285	7.225	123.5E6	131.5E6	945.441	979.167

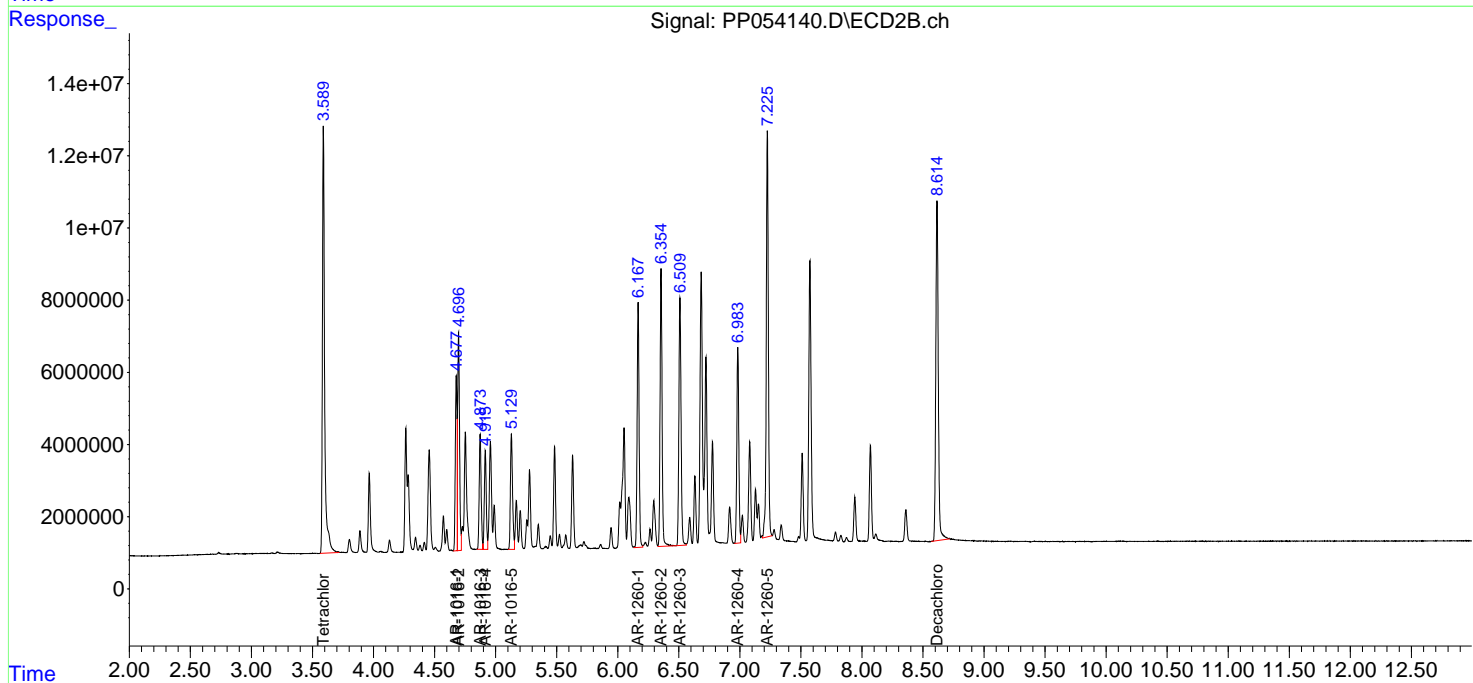
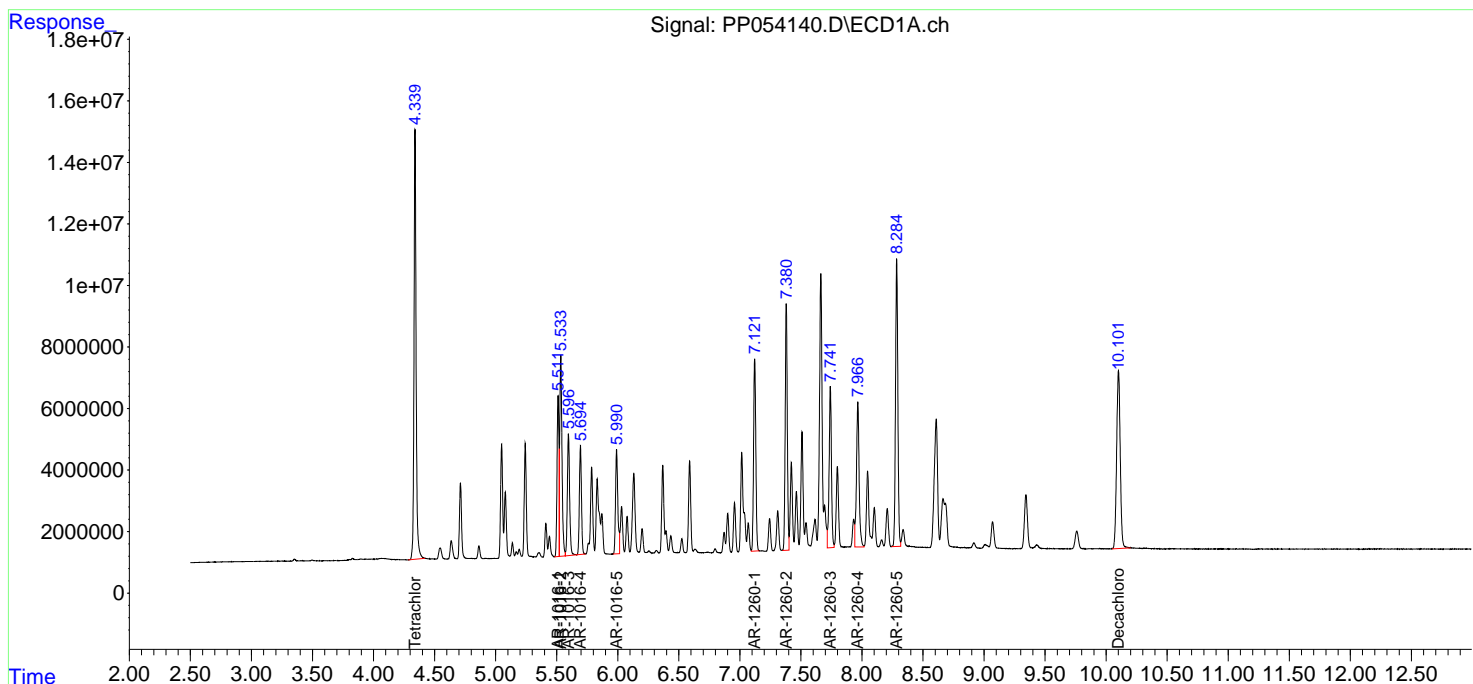
(f)=RT Delta > 1/2 Window (#)=Amounts differ by > 25% (m)=manual int.

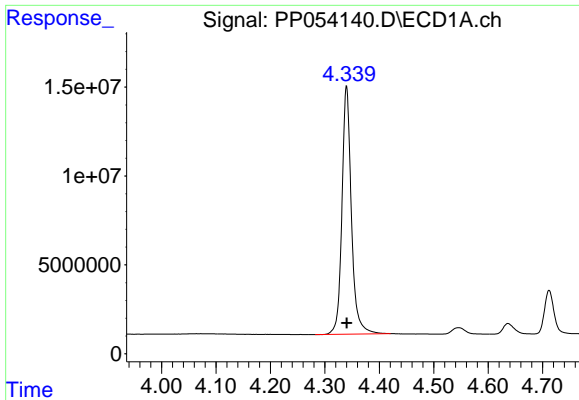
Data Path : Z:\pestpcbsrv\HPCHEM1\ECD_P\Data\PP122922\
 Data File : PP054140.D
 Signal(s) : Signal #1: ECD1A.ch Signal #2: ECD2B.ch
 Acq On : 29 Dec 2022 16:41
 Operator : YP\AJ
 Sample : AR1660ICC1000
 Misc :
 ALS Vial : 3 Sample Multiplier: 1

Instrument :
 ECD_P
 ClientSampleId :
 AR1660ICC1000

Integration File signal 1: autoint1.e
 Integration File signal 2: autoint2.e
 Quant Time: Dec 30 02:36:56 2022
 Quant Method : Z:\pestpcbsrv\HPCHEM1\ECD_P\methods\PP122922.M
 Quant Title : GC EXTRACTABLES
 QLast Update : Fri Dec 30 02:36:20 2022
 Response via : Initial Calibration
 Integrator: ChemStation

Volume Inj. : 2 µl
 Signal #1 Phase : ZB-MR1 Signal #2 Phase: ZB-MR2
 Signal #1 Info : 30Mx0.32mmx 0.50µ Signal #2 Info : 30M x 0.32mm x 0.25µm

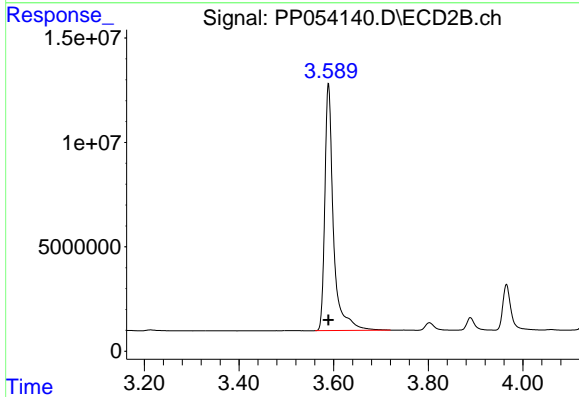




#1 Tetrachloro-m-xylene

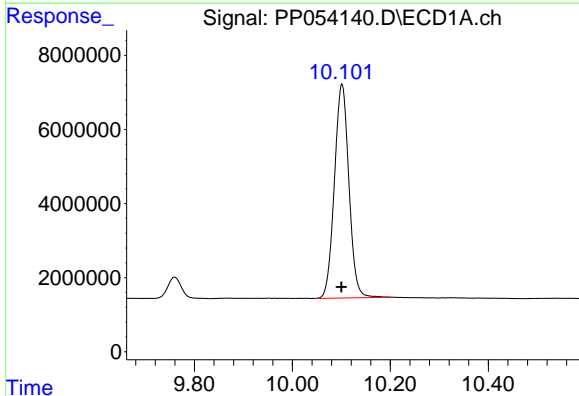
R.T.: 4.340 min
 Delta R.T.: 0.000 min
 Response: 168206974
 Conc: 96.14 ng/ml

Instrument :
 ECD_P
 ClientSampleId :
 AR1660ICC1000



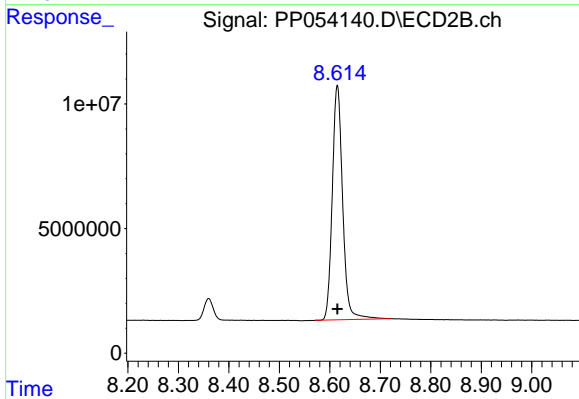
#1 Tetrachloro-m-xylene

R.T.: 3.589 min
 Delta R.T.: 0.000 min
 Response: 150188747
 Conc: 97.24 ng/ml



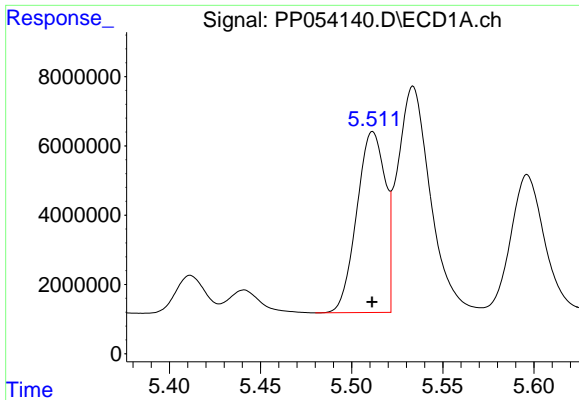
#2 Decachlorobiphenyl

R.T.: 10.101 min
 Delta R.T.: 0.000 min
 Response: 118770752
 Conc: 90.43 ng/ml



#2 Decachlorobiphenyl

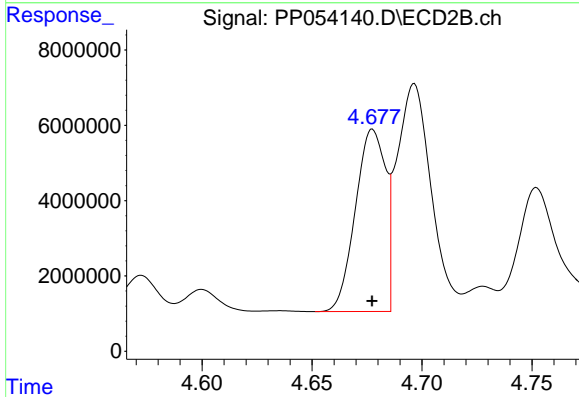
R.T.: 8.615 min
 Delta R.T.: 0.000 min
 Response: 134099321
 Conc: 94.03 ng/ml



#3 AR-1016-1

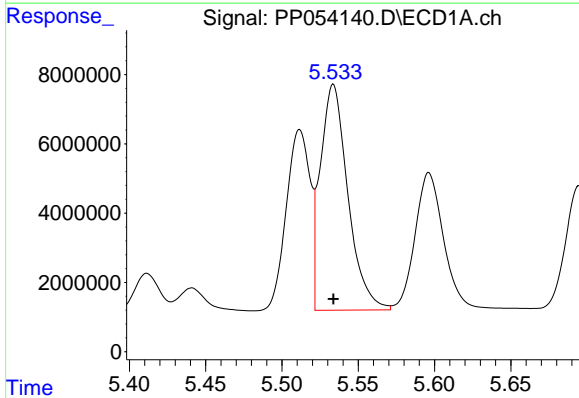
R.T.: 5.512 min
 Delta R.T.: 0.000 min
 Response: 56736506
 Conc: 939.56 ng/ml

Instrument :
 ECD_P
 ClientSampleId :
 AR1660ICC1000



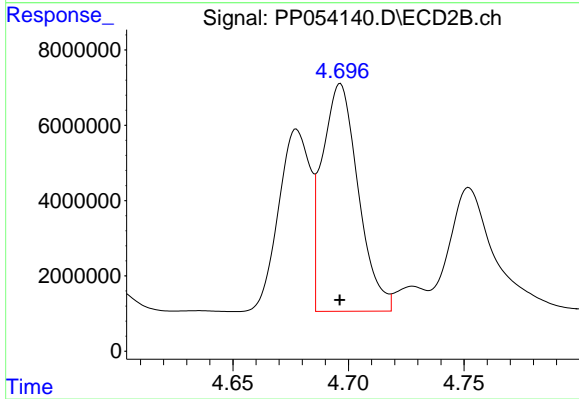
#3 AR-1016-1

R.T.: 4.678 min
 Delta R.T.: 0.000 min
 Response: 46046861
 Conc: 947.17 ng/ml



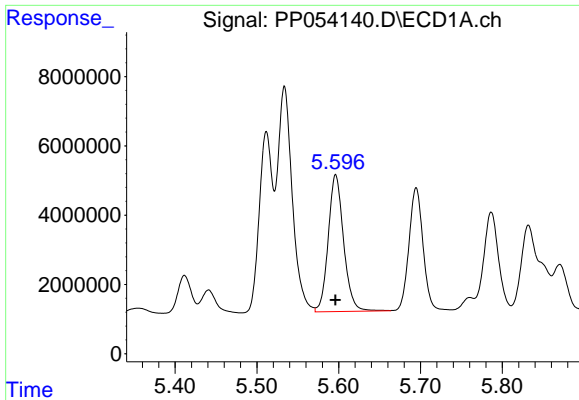
#4 AR-1016-2

R.T.: 5.534 min
 Delta R.T.: 0.000 min
 Response: 82067609
 Conc: 932.17 ng/ml



#4 AR-1016-2

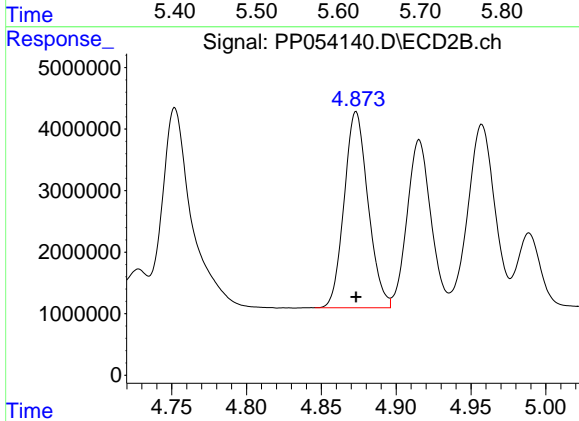
R.T.: 4.697 min
 Delta R.T.: 0.000 min
 Response: 65611154
 Conc: 954.34 ng/ml



#5 AR-1016-3

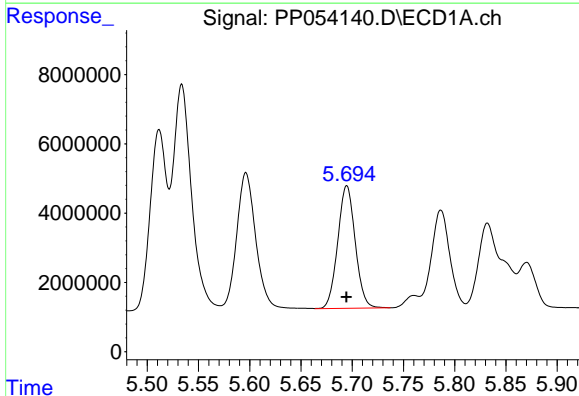
R.T.: 5.596 min
 Delta R.T.: 0.000 min
 Response: 51532664
 Conc: 920.51 ng/ml

Instrument :
 ECD_P
 ClientSampleId :
 AR1660ICC1000



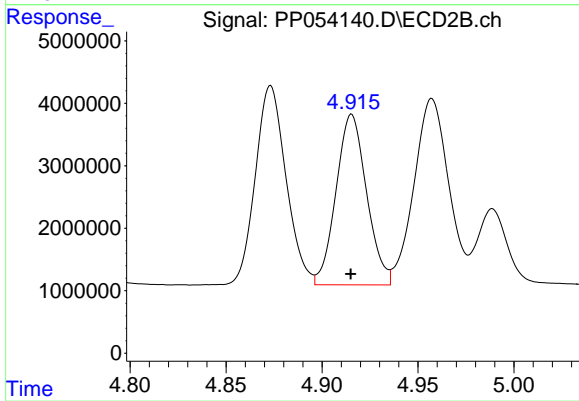
#5 AR-1016-3

R.T.: 4.873 min
 Delta R.T.: 0.000 min
 Response: 35418243
 Conc: 942.73 ng/ml



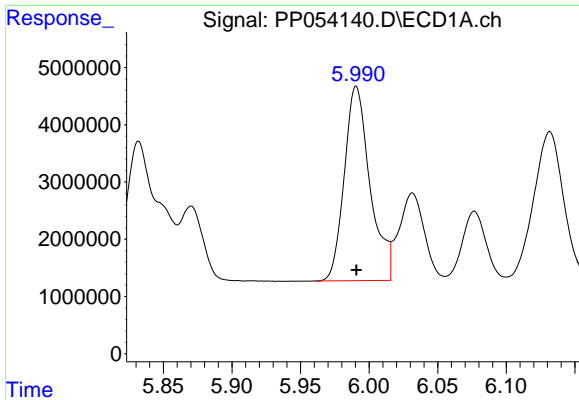
#6 AR-1016-4

R.T.: 5.695 min
 Delta R.T.: 0.000 min
 Response: 41941029
 Conc: 932.64 ng/ml



#6 AR-1016-4

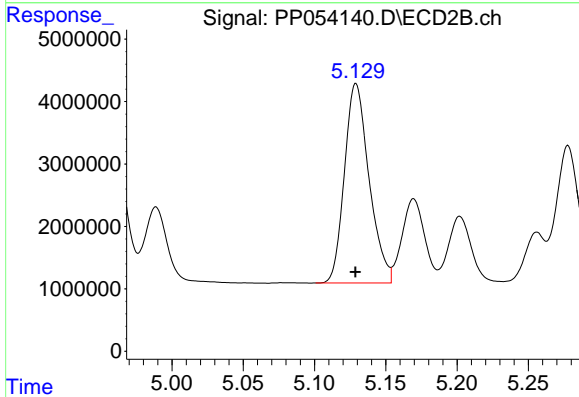
R.T.: 4.915 min
 Delta R.T.: 0.000 min
 Response: 30314787
 Conc: 915.77 ng/ml



#7 AR-1016-5

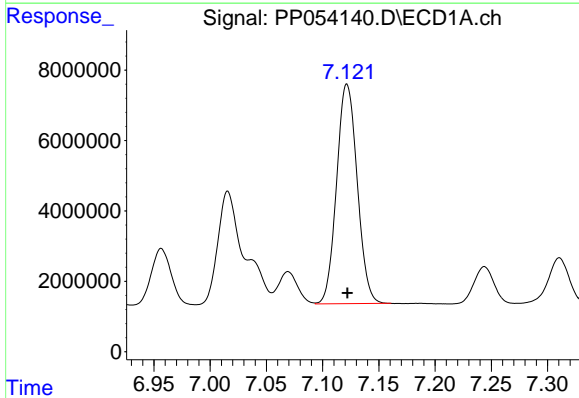
R.T.: 5.991 min
 Delta R.T.: 0.000 min
 Response: 44408870
 Conc: 910.22 ng/ml

Instrument :
 ECD_P
 ClientSampleId :
 AR1660ICC1000



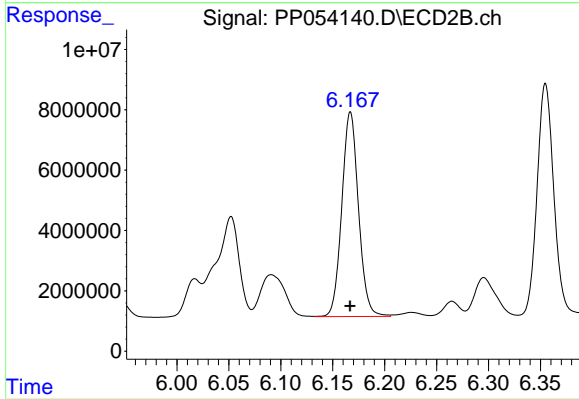
#7 AR-1016-5

R.T.: 5.129 min
 Delta R.T.: 0.000 min
 Response: 38387731
 Conc: 923.91 ng/ml



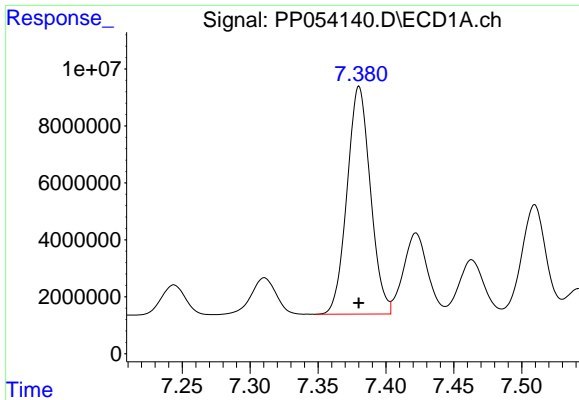
#31 AR-1260-1

R.T.: 7.122 min
 Delta R.T.: 0.000 min
 Response: 79680121
 Conc: 918.35 ng/ml



#31 AR-1260-1

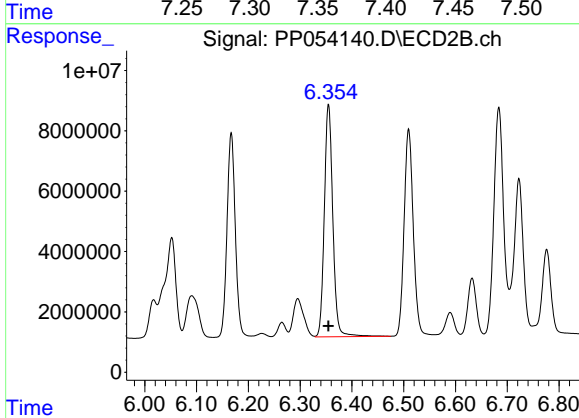
R.T.: 6.167 min
 Delta R.T.: 0.000 min
 Response: 75840272
 Conc: 953.54 ng/ml



#32 AR-1260-2

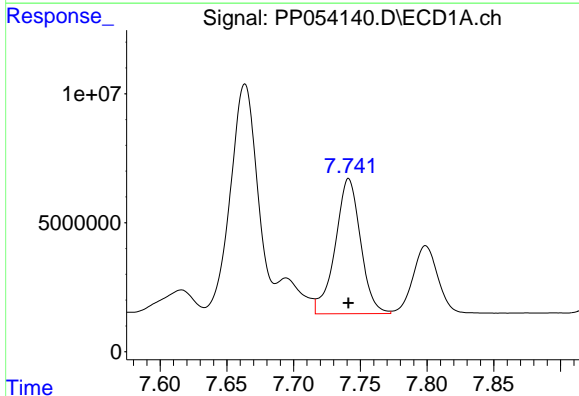
R.T.: 7.380 min
 Delta R.T.: 0.000 min
 Response: 95778666
 Conc: 926.76 ng/ml

Instrument :
 ECD_P
 ClientSampleId :
 AR1660ICC1000



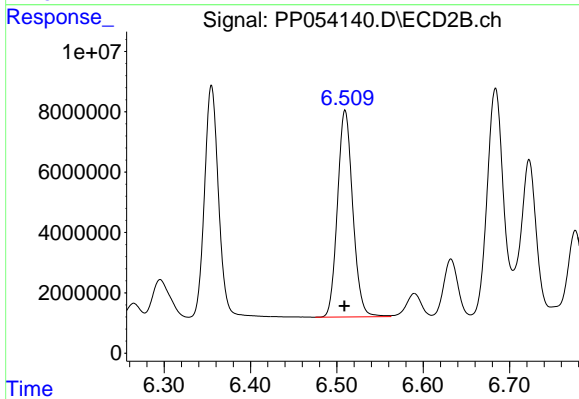
#32 AR-1260-2

R.T.: 6.355 min
 Delta R.T.: 0.000 min
 Response: 87756923
 Conc: 966.59 ng/ml



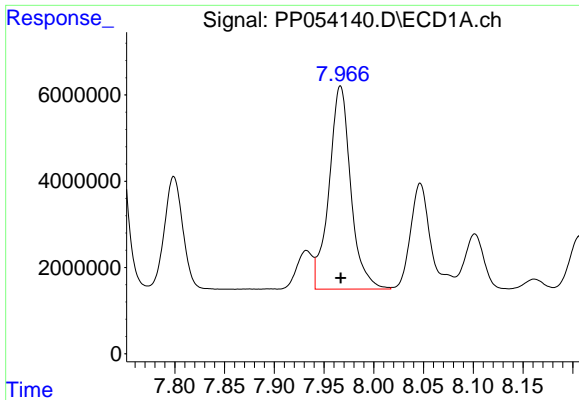
#33 AR-1260-3

R.T.: 7.741 min
 Delta R.T.: 0.000 min
 Response: 69098138
 Conc: 906.84 ng/ml



#33 AR-1260-3

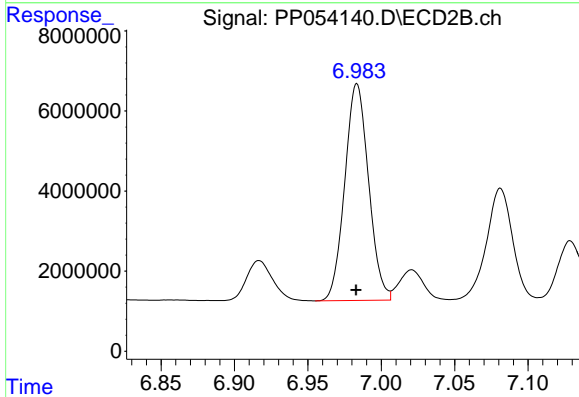
R.T.: 6.510 min
 Delta R.T.: 0.000 min
 Response: 84243194
 Conc: 965.64 ng/ml



#34 AR-1260-4

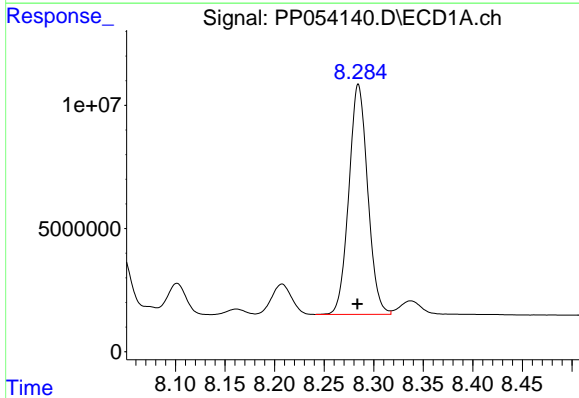
R.T.: 7.966 min
 Delta R.T.: 0.000 min
 Response: 71591169
 Conc: 912.10 ng/ml

Instrument :
 ECD_P
 ClientSampleId :
 AR1660ICC1000



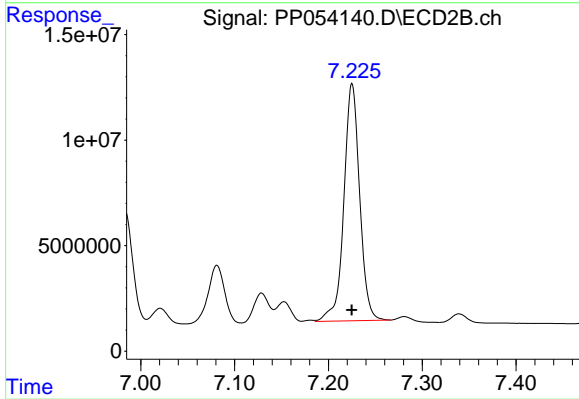
#34 AR-1260-4

R.T.: 6.983 min
 Delta R.T.: 0.000 min
 Response: 61108793
 Conc: 940.02 ng/ml



#35 AR-1260-5

R.T.: 8.285 min
 Delta R.T.: 0.000 min
 Response: 123456877
 Conc: 945.44 ng/ml



#35 AR-1260-5

R.T.: 7.225 min
 Delta R.T.: 0.000 min
 Response: 131520281
 Conc: 979.17 ng/ml