

Data Path : Z:\pestpcbsrv\HPCHEM1\ECD_P\Data\PP010419\
 Data File : PP028646.D
 Signal(s) : Signal #1: ECD1A.CH Signal #2: ECD2B.CH
 Acq On : 04 Jan 2019 19:32
 Operator : EI\MA
 Sample : K1019-04
 Misc :
 ALS Vial : 21 Sample Multiplier: 1

Instrument :
 ECD_P
ClientSampleId :
 TEST-PIT-D-11-12-B

Manual Integrations
APPROVED
 Sohil
 1/7/2019 1:34:04 PM

Integration File signal 1: autoint1.e
 Integration File signal 2: autoint2.e
 Quant Time: Jan 04 23:00:23 2019
 Quant Method : Z:\pestpcbsrv\HPCHEM1\ECD_P\methods\PP010319.M
 Quant Title : 8080.M
 QLast Update : Fri Jan 04 01:40:06 2019
 Response via : Initial Calibration
 Integrator: ChemStation 6890 Scale Mode: Large solvent peaks clipped

Volume Inj. : 2 µl
 Signal #1 Phase : ZB-CLPesticides-1 Signal #2 Phase: ZB-CLPesticides-2
 Signal #1 Info : 30M x 0.32mm x0.5 Signal #2 Info : 30M x 0.32mm x 0.25µm

Compound	RT#1	RT#2	Resp#1	Resp#2	ng/ml	ng/ml

System Monitoring Compounds						
4) S 2,4-DCAA	12.135	12.246	183.7E6	228.8E6	714.482m	524.051 #

Target Compounds

(f)=RT Delta > 1/2 Window (#)=Amounts differ by > 25% (m)=manual int.

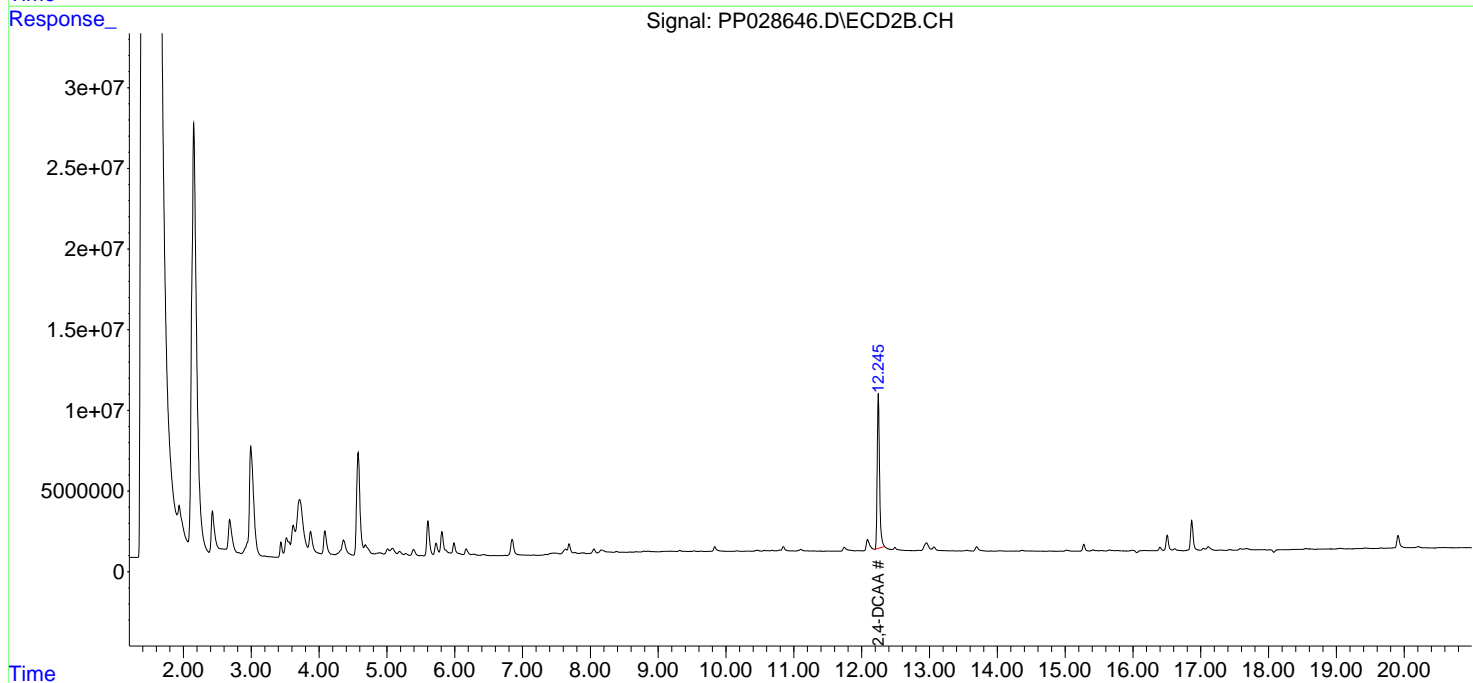
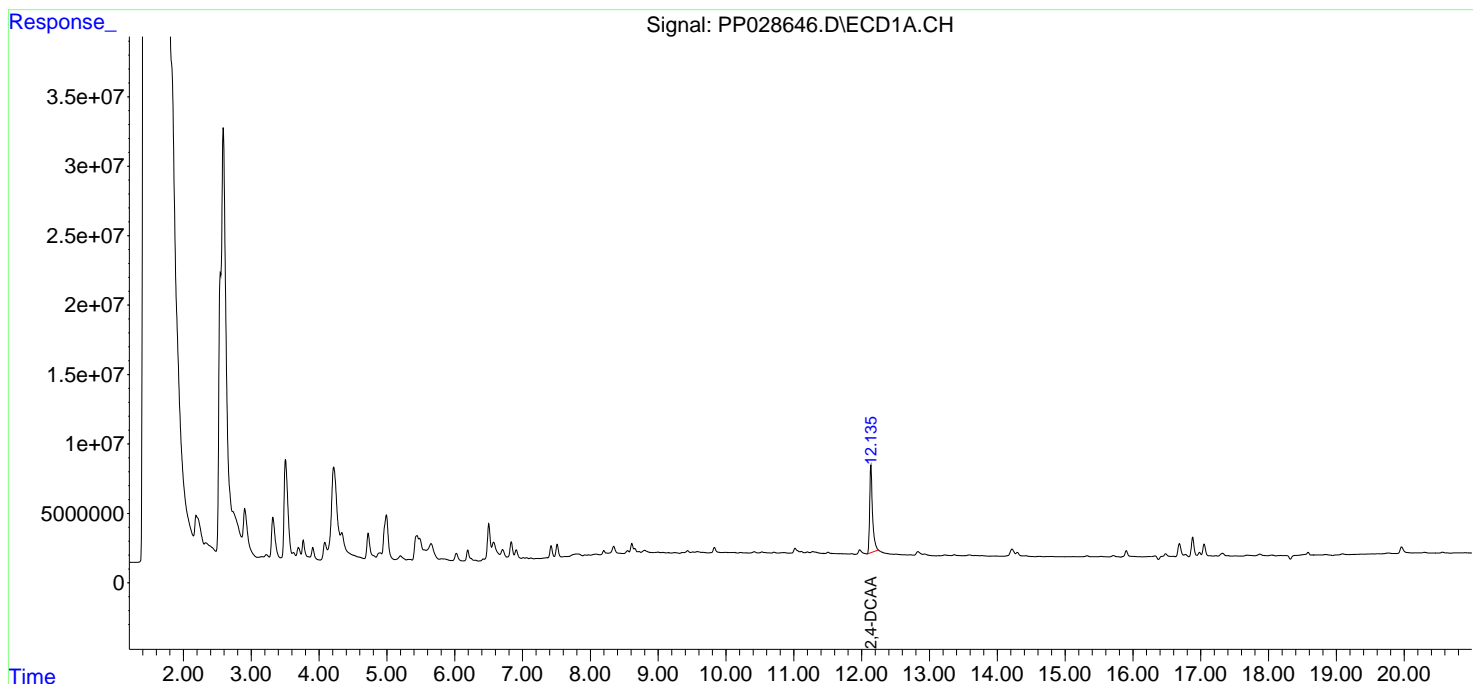
Data Path : Z:\pestpcbsrv\HPCHEM1\ECD_P\Data\PP010419\
 Data File : PP028646.D
 Signal(s) : Signal #1: ECD1A.CH Signal #2: ECD2B.CH
 Acq On : 04 Jan 2019 19:32
 Operator : EI\MA
 Sample : K1019-04
 Misc :
 ALS Vial : 21 Sample Multiplier: 1

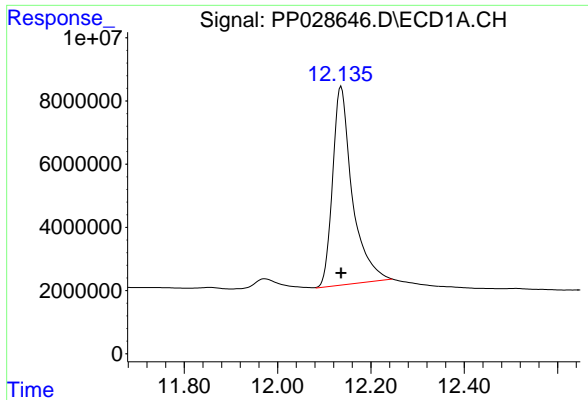
Instrument :
 ECD_P
ClientSampleId :
 TEST-PIT-D-11-12-B

Manual Integrations
APPROVED
 Sohil
 1/7/2019 1:34:04 PM

Integration File signal 1: autoint1.e
 Integration File signal 2: autoint2.e
 Quant Time: Jan 04 23:00:23 2019
 Quant Method : Z:\pestpcbsrv\HPCHEM1\ECD_P\methods\PP010319.M
 Quant Title : 8080.M
 QLast Update : Fri Jan 04 01:40:06 2019
 Response via : Initial Calibration
 Integrator: ChemStation 6890 Scale Mode: Large solvent peaks clipped

Volume Inj. : 2 µl
 Signal #1 Phase : ZB-CLPesticides-1 Signal #2 Phase: ZB-CLPesticides-2
 Signal #1 Info : 30M x 0.32mm x0.5 Signal #2 Info : 30M x 0.32mm x 0.25µm

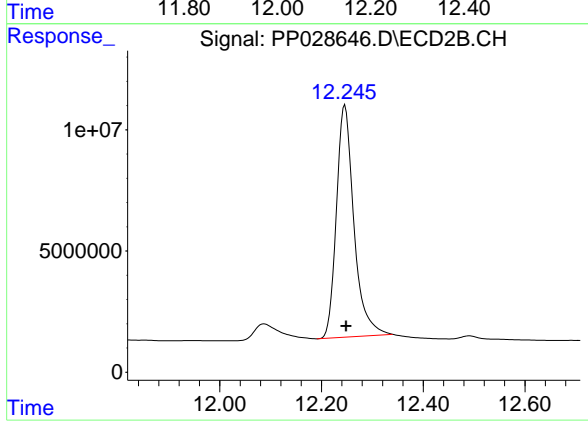




#4 2,4-DCAA
 R.T.: 12.135 min
 Delta R.T.: -0.001 min
 Response: 183697002
 Conc: 714.48 ng/ml m

Instrument :
 ECD_P
ClientSampled :
 TEST-PIT-D-11-12-B

Manual Integrations
APPROVED
 Sohil
 1/7/2019 1:34:04 PM



#4 2,4-DCAA
 R.T.: 12.246 min
 Delta R.T.: -0.002 min
 Response: 228790626
 Conc: 524.05 ng/ml