

Data Path : Z:\pestpcbsrv\HPCHEM1\ECD_P\Data\PP030823\
 Data File : PP056282.D
 Signal(s) : Signal #1: ECD1A.ch Signal #2: ECD2B.ch
 Acq On : 07 Mar 2023 21:02
 Operator : YP\AJ
 Sample : AR1242ICC250
 Misc :
 ALS Vial : 13 Sample Multiplier: 1

Instrument :
 ECD_P
ClientSampleId :
 AR1242ICC250

Integration File signal 1: autoint1.e
 Integration File signal 2: autoint2.e
 Quant Time: Mar 07 21:32:13 2023
 Quant Method : Z:\pestpcbsrv\HPCHEM1\ECD_P\methods\PP030823.M
 Quant Title : GC EXTRACTABLES
 QLast Update : Tue Mar 07 21:19:46 2023
 Response via : Initial Calibration
 Integrator: ChemStation

Volume Inj. : 2 µl
 Signal #1 Phase : ZB-MR1 Signal #2 Phase: ZB-MR2
 Signal #1 Info : 30Mx0.32mmx 0.50µ Signal #2 Info : 30M x 0.32mm x 0.25µm

Compound	RT#1	RT#2	Resp#1	Resp#2	ng/ml	ng/ml

System Monitoring Compounds						
1) SA Tetrachlo...	4.317	3.559	42362038	37612539	25.811	25.597
2) SA Decachlor...	10.062	8.558	52900277	29456866	26.417	26.672
Target Compounds						
16) L4 AR-1242-1	5.488	4.640	13044003	9485896	267.983	268.906
17) L4 AR-1242-2	5.511	4.658	18781422	13500700	264.144	264.681
18) L4 AR-1242-3	5.572	4.834	12169189	7156491	267.767	262.026
19) L4 AR-1242-4	5.671	4.918	9621567	7850095	262.612	267.901
20) L4 AR-1242-5	6.411	5.442	11279211	8600711	268.623	264.972

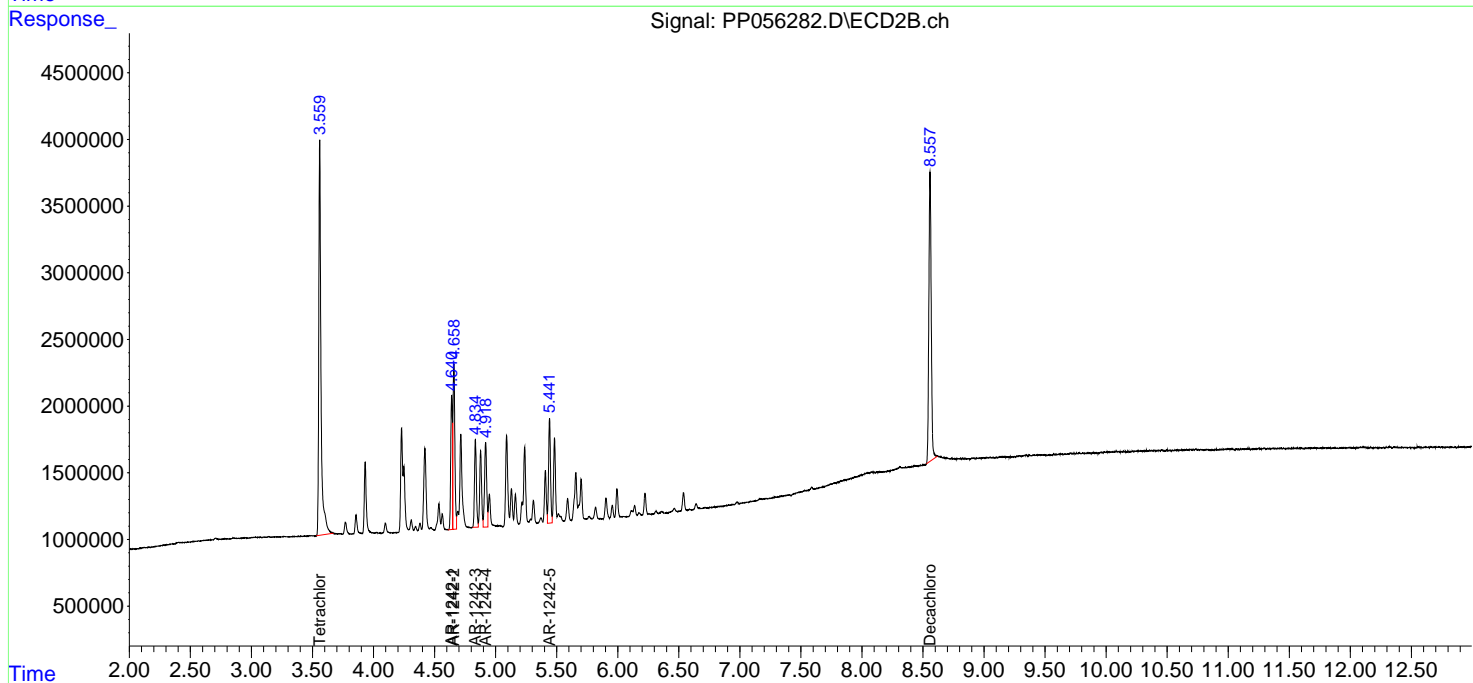
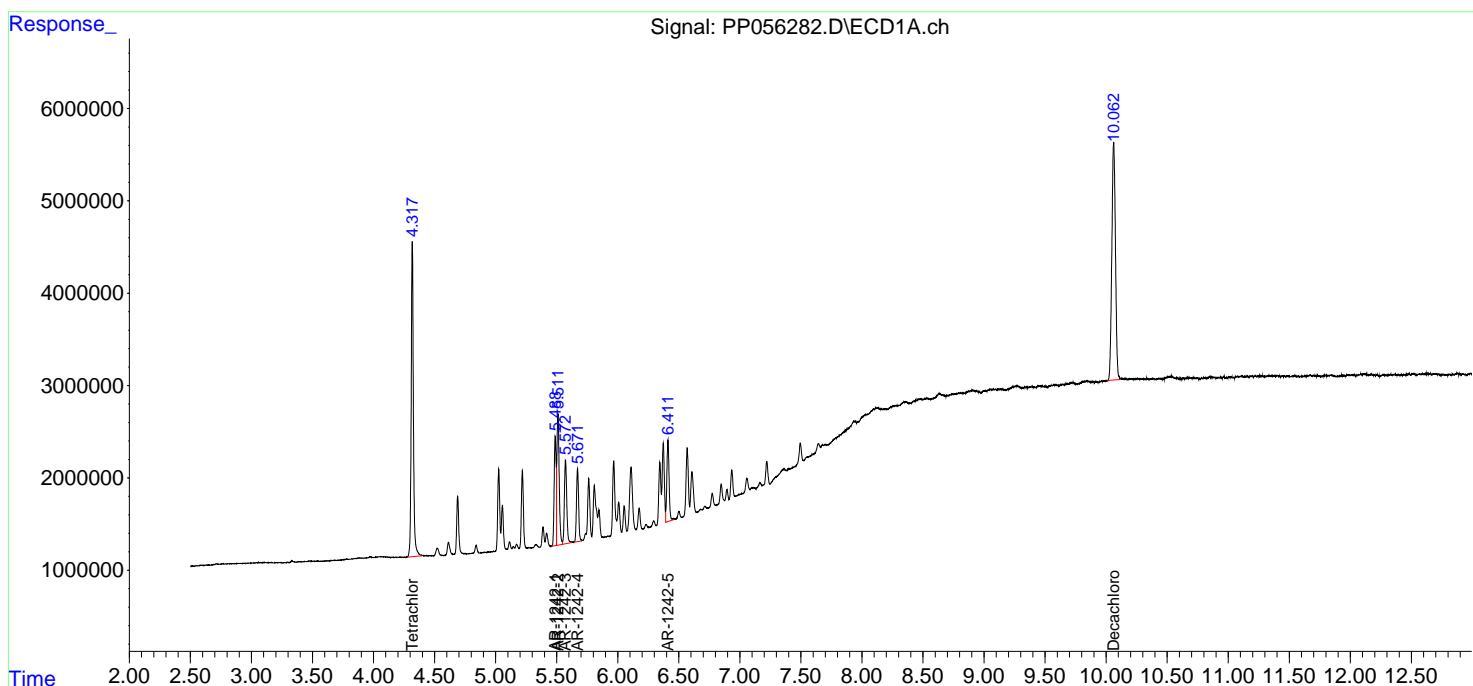
(f)=RT Delta > 1/2 Window (#)=Amounts differ by > 25% (m)=manual int.

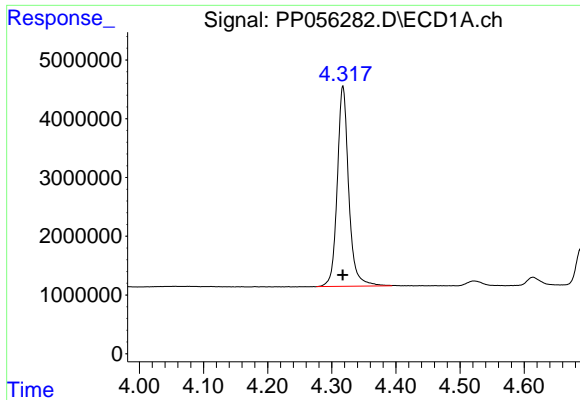
Data Path : Z:\pestpcbsrv\HPCHEM1\ECD_P\Data\PP030823\
 Data File : PP056282.D
 Signal(s) : Signal #1: ECD1A.ch Signal #2: ECD2B.ch
 Acq On : 07 Mar 2023 21:02
 Operator : YP\AJ
 Sample : AR1242ICC250
 Misc :
 ALS Vial : 13 Sample Multiplier: 1

Instrument :
 ECD_P
 ClientSampleId :
 AR1242ICC250

Integration File signal 1: autoint1.e
 Integration File signal 2: autoint2.e
 Quant Time: Mar 07 21:32:13 2023
 Quant Method : Z:\pestpcbsrv\HPCHEM1\ECD_P\methods\PP030823.M
 Quant Title : GC EXTRACTABLES
 QLast Update : Tue Mar 07 21:19:46 2023
 Response via : Initial Calibration
 Integrator: ChemStation

Volume Inj. : 2 µl
 Signal #1 Phase : ZB-MR1 Signal #2 Phase: ZB-MR2
 Signal #1 Info : 30Mx0.32mmx 0.50µ Signal #2 Info : 30M x 0.32mm x 0.25µm

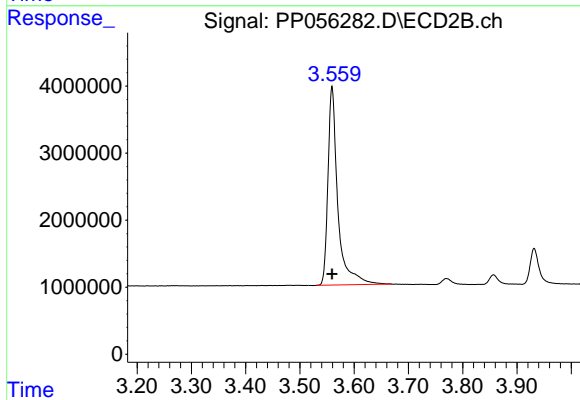




#1 Tetrachloro-m-xylene

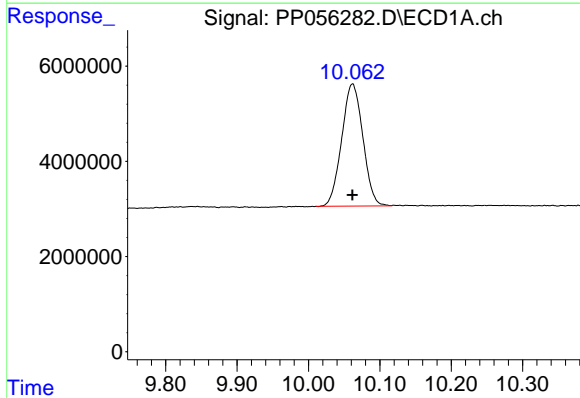
R.T.: 4.317 min
Delta R.T.: 0.000 min
Response: 42362038
Conc: 25.81 ng/ml

Instrument :
ECD_P
ClientSampleId :
AR1242ICC250



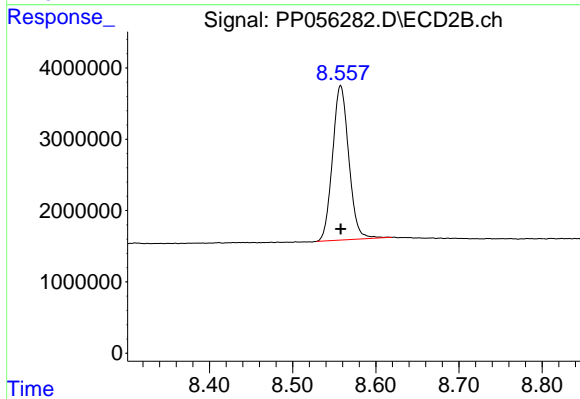
#1 Tetrachloro-m-xylene

R.T.: 3.559 min
Delta R.T.: 0.000 min
Response: 37612539
Conc: 25.60 ng/ml



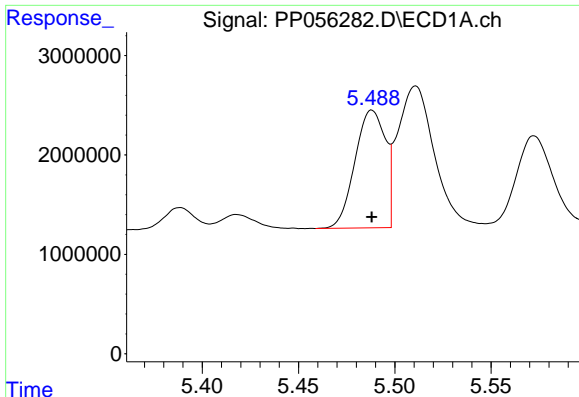
#2 Decachlorobiphenyl

R.T.: 10.062 min
Delta R.T.: 0.000 min
Response: 52900277
Conc: 26.42 ng/ml



#2 Decachlorobiphenyl

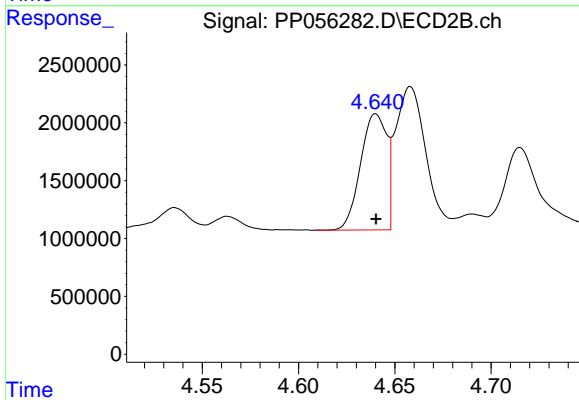
R.T.: 8.558 min
Delta R.T.: 0.000 min
Response: 29456866
Conc: 26.67 ng/ml



#16 AR-1242-1

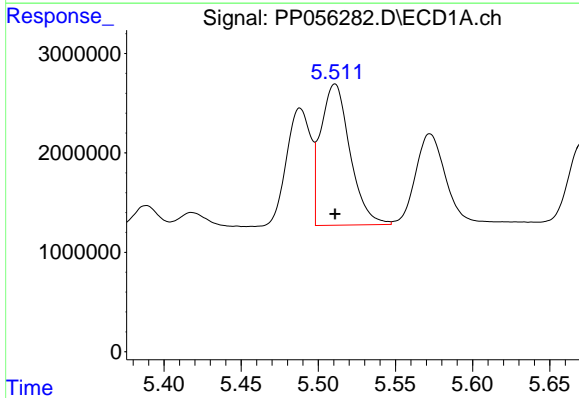
R.T.: 5.488 min
 Delta R.T.: 0.000 min
 Response: 13044003
 Conc: 267.98 ng/ml

Instrument :
 ECD_P
 ClientSampleId :
 AR1242ICC250



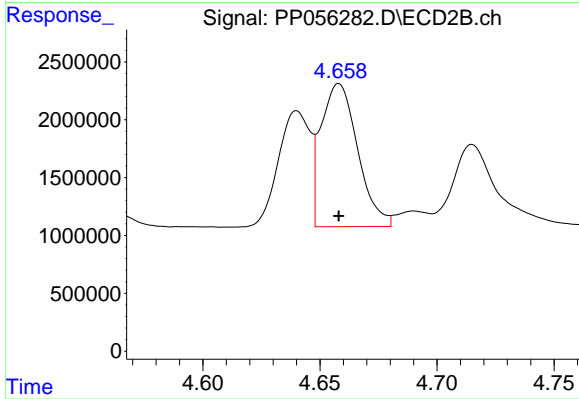
#16 AR-1242-1

R.T.: 4.640 min
 Delta R.T.: 0.000 min
 Response: 9485896
 Conc: 268.91 ng/ml



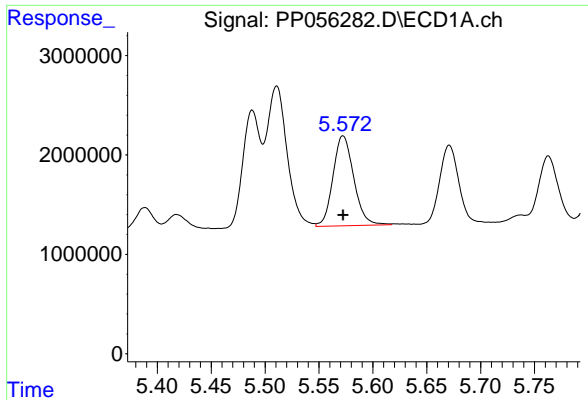
#17 AR-1242-2

R.T.: 5.511 min
 Delta R.T.: 0.000 min
 Response: 18781422
 Conc: 264.14 ng/ml



#17 AR-1242-2

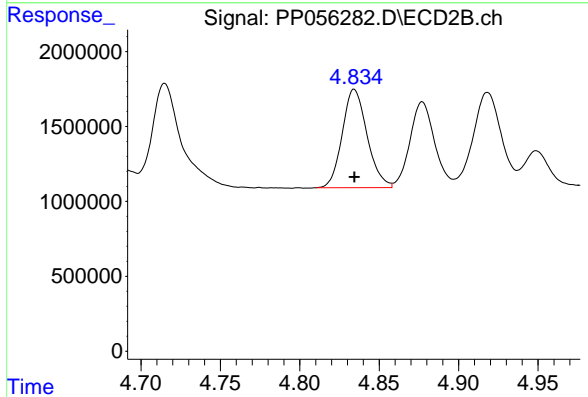
R.T.: 4.658 min
 Delta R.T.: 0.000 min
 Response: 13500700
 Conc: 264.68 ng/ml



#18 AR-1242-3

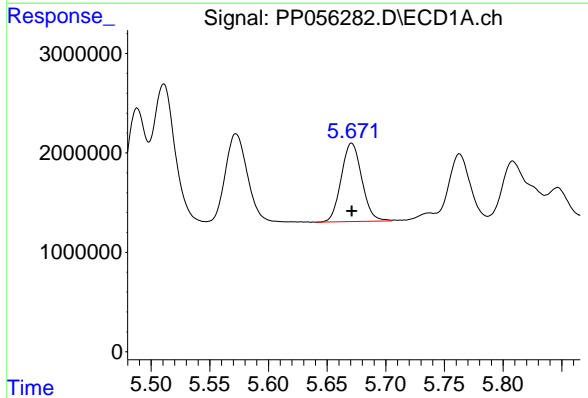
R.T.: 5.572 min
 Delta R.T.: 0.000 min
 Response: 12169189
 Conc: 267.77 ng/ml

Instrument :
 ECD_P
 ClientSampleId :
 AR1242ICC250



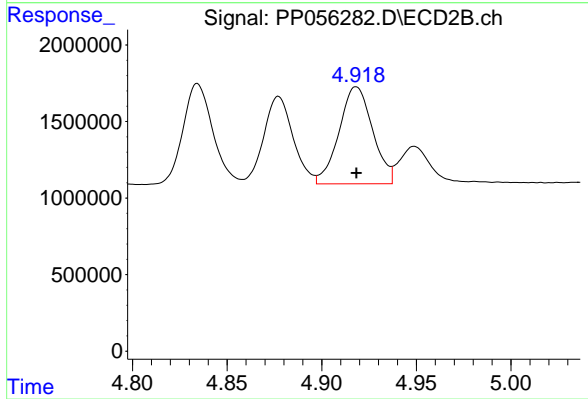
#18 AR-1242-3

R.T.: 4.834 min
 Delta R.T.: 0.000 min
 Response: 7156491
 Conc: 262.03 ng/ml



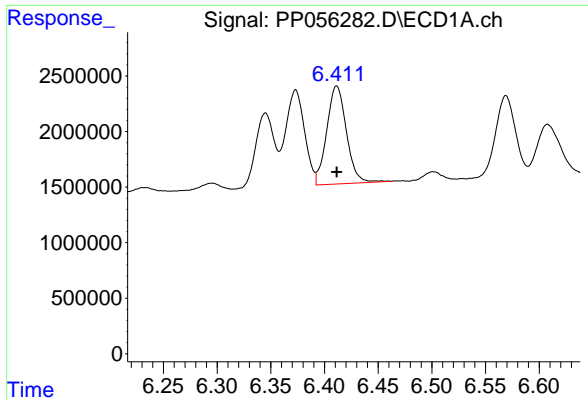
#19 AR-1242-4

R.T.: 5.671 min
 Delta R.T.: 0.000 min
 Response: 9621567
 Conc: 262.61 ng/ml



#19 AR-1242-4

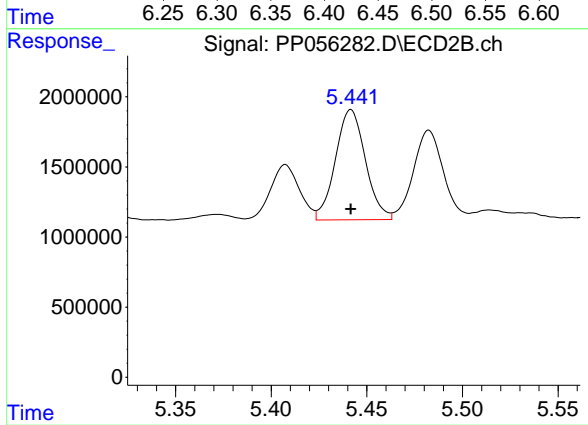
R.T.: 4.918 min
 Delta R.T.: 0.000 min
 Response: 7850095
 Conc: 267.90 ng/ml



#20 AR-1242-5

R.T.: 6.411 min
Delta R.T.: 0.000 min
Response: 11279211
Conc: 268.62 ng/ml

Instrument :
ECD_P
ClientSampleId :
AR1242ICC250



#20 AR-1242-5

R.T.: 5.442 min
Delta R.T.: 0.000 min
Response: 8600711
Conc: 264.97 ng/ml