

Data Path : Z:\pestpcbsrv\HPCHEM1\ECD_P\Data\PP030823\
 Data File : PP056281.D
 Signal(s) : Signal #1: ECD1A.ch Signal #2: ECD2B.ch
 Acq On : 07 Mar 2023 20:46
 Operator : YP\AJ
 Sample : AR1242ICC500
 Misc :
 ALS Vial : 12 Sample Multiplier: 1

Instrument :
 ECD_P
 ClientSampleId :
 AR1242ICC500

Integration File signal 1: autoint1.e
 Integration File signal 2: autoint2.e
 Quant Time: Mar 07 21:21:50 2023
 Quant Method : Z:\pestpcbsrv\HPCHEM1\ECD_P\methods\PP030823.M
 Quant Title : GC EXTRACTABLES
 QLast Update : Tue Mar 07 21:19:46 2023
 Response via : Initial Calibration
 Integrator: ChemStation

Volume Inj. : 2 µl
 Signal #1 Phase : ZB-MR1 Signal #2 Phase: ZB-MR2
 Signal #1 Info : 30Mx0.32mmx 0.50µ Signal #2 Info : 30M x 0.32mm x 0.25µm

Compound	RT#1	RT#2	Resp#1	Resp#2	ng/ml	ng/ml

System Monitoring Compounds						
1) SA Tetrachlo...	4.318	3.559	83472171	74187655	50.000	50.000
2) SA Decachlor...	10.062	8.558	101.6E6	55989498	50.000	50.000
Target Compounds						
16) L4 AR-1242-1	5.488	4.640	24987058	17953996	500.000	500.000
17) L4 AR-1242-2	5.511	4.659	35929951	25802614	500.000	500.000
18) L4 AR-1242-3	5.572	4.835	23152027	14039846	500.000	500.000
19) L4 AR-1242-4	5.672	4.919	18611049	15127026	500.000	500.000
20) L4 AR-1242-5	6.412	5.442	21279303	16581780	500.000	500.000

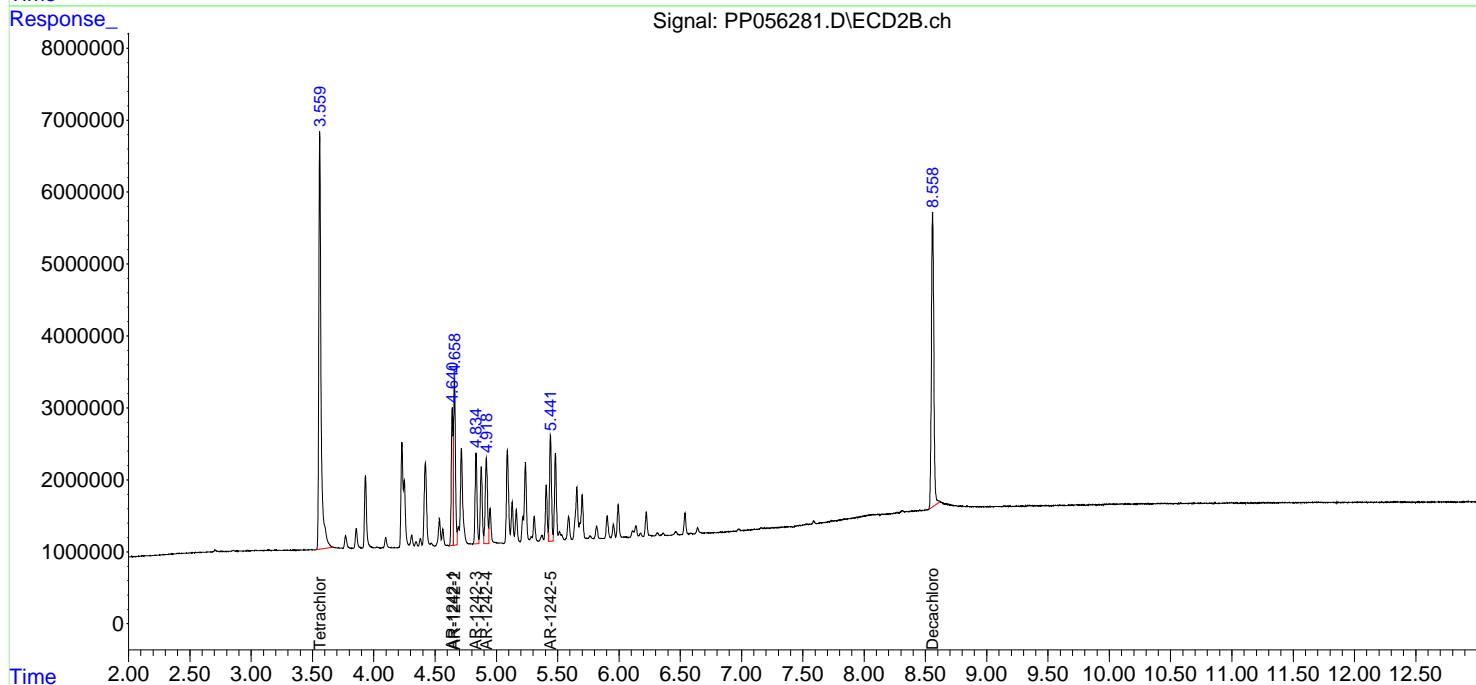
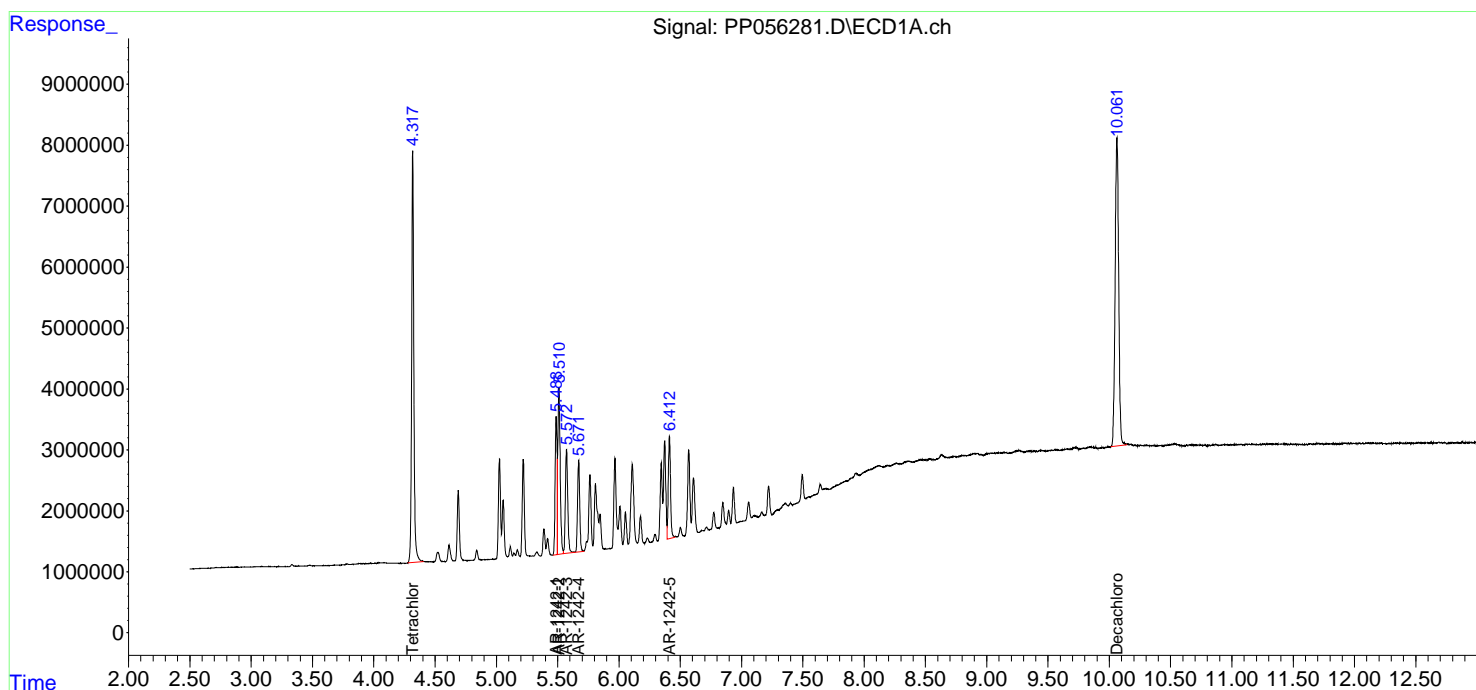
(f)=RT Delta > 1/2 Window (#)=Amounts differ by > 25% (m)=manual int.

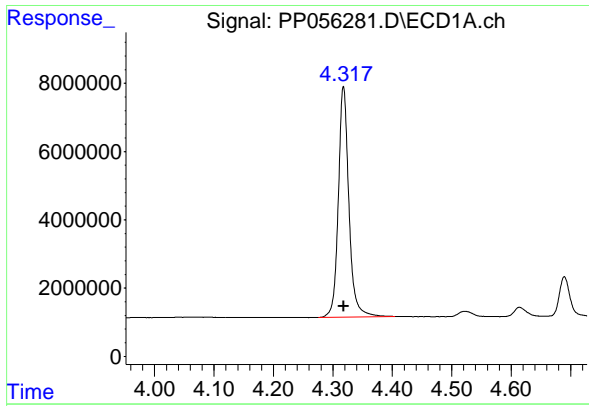
Data Path : Z:\pestpcbsrv\HPCHEM1\ECD_P\Data\PP030823\
 Data File : PP056281.D
 Signal(s) : Signal #1: ECD1A.ch Signal #2: ECD2B.ch
 Acq On : 07 Mar 2023 20:46
 Operator : YP\AJ
 Sample : AR1242ICC500
 Misc :
 ALS Vial : 12 Sample Multiplier: 1

Instrument :
 ECD_P
 ClientSampleId :
 AR1242ICC500

Integration File signal 1: autoint1.e
 Integration File signal 2: autoint2.e
 Quant Time: Mar 07 21:21:50 2023
 Quant Method : Z:\pestpcbsrv\HPCHEM1\ECD_P\methods\PP030823.M
 Quant Title : GC EXTRACTABLES
 QLast Update : Tue Mar 07 21:19:46 2023
 Response via : Initial Calibration
 Integrator: ChemStation

Volume Inj. : 2 µl
 Signal #1 Phase : ZB-MR1 Signal #2 Phase: ZB-MR2
 Signal #1 Info : 30Mx0.32mmx 0.50µ Signal #2 Info : 30M x 0.32mm x 0.25µm

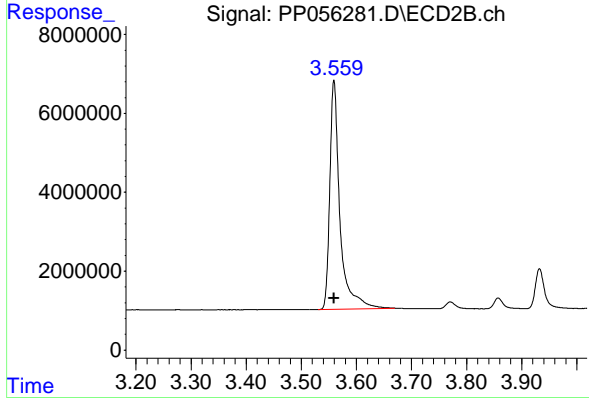




#1 Tetrachloro-m-xylene

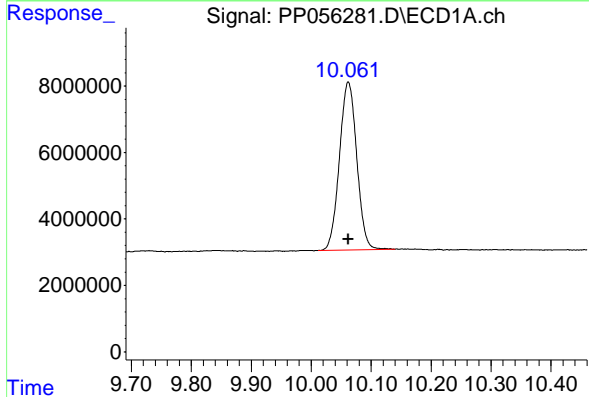
R.T.: 4.318 min
 Delta R.T.: 0.000 min
 Response: 83472171
 Conc: 50.00 ng/ml

Instrument : ECD_P
 ClientSampleId : AR1242ICC500



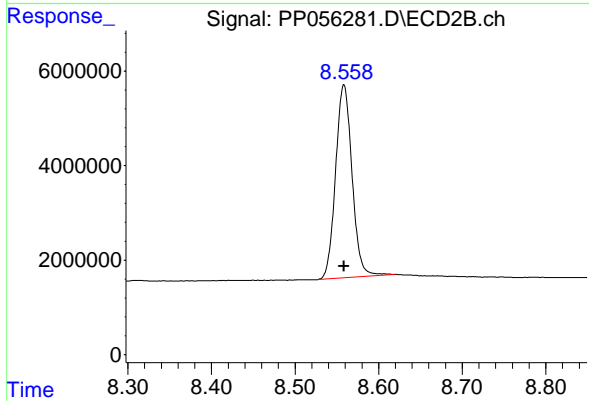
#1 Tetrachloro-m-xylene

R.T.: 3.559 min
 Delta R.T.: 0.000 min
 Response: 74187655
 Conc: 50.00 ng/ml



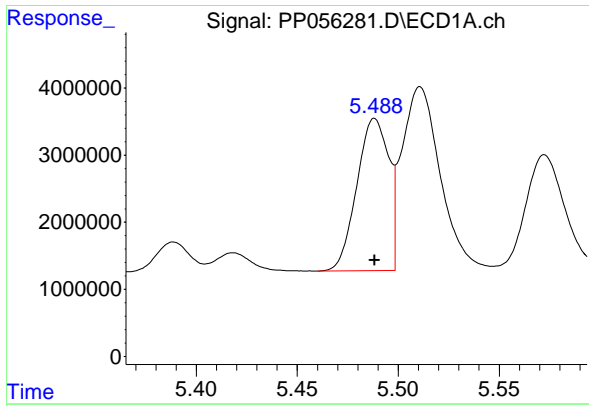
#2 Decachlorobiphenyl

R.T.: 10.062 min
 Delta R.T.: 0.000 min
 Response: 101621725
 Conc: 50.00 ng/ml



#2 Decachlorobiphenyl

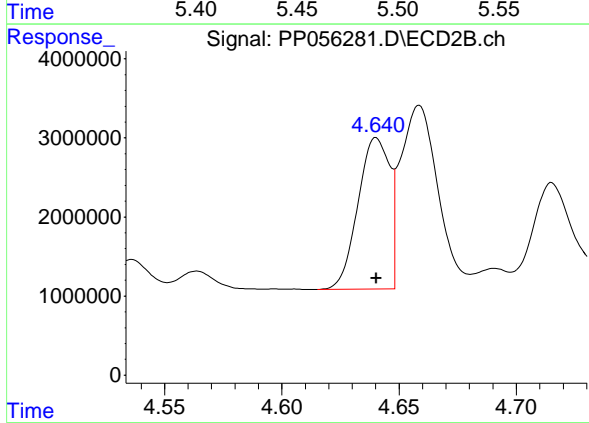
R.T.: 8.558 min
 Delta R.T.: 0.000 min
 Response: 55989498
 Conc: 50.00 ng/ml



#16 AR-1242-1

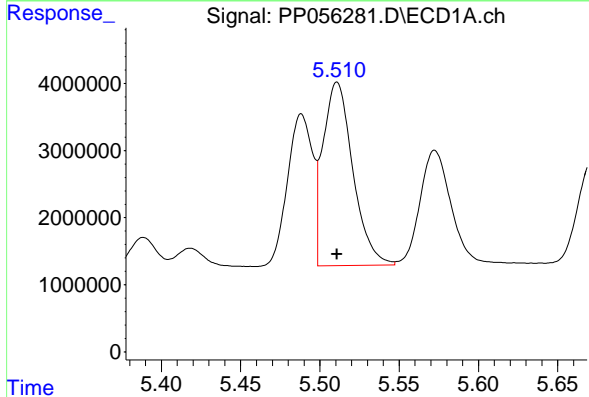
R.T.: 5.488 min
 Delta R.T.: 0.000 min
 Response: 24987058
 Conc: 500.00 ng/ml

Instrument :
 ECD_P
 ClientSampleId :
 AR1242ICC500



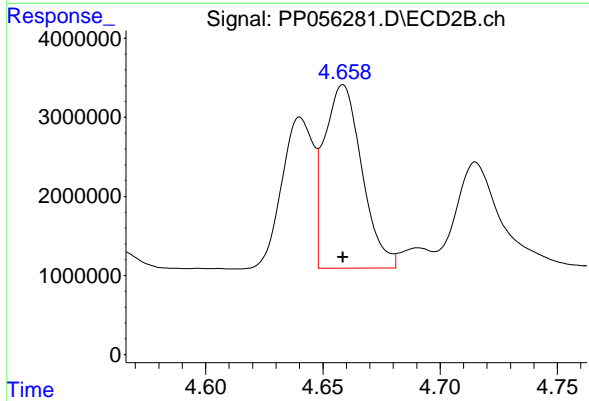
#16 AR-1242-1

R.T.: 4.640 min
 Delta R.T.: 0.000 min
 Response: 17953996
 Conc: 500.00 ng/ml



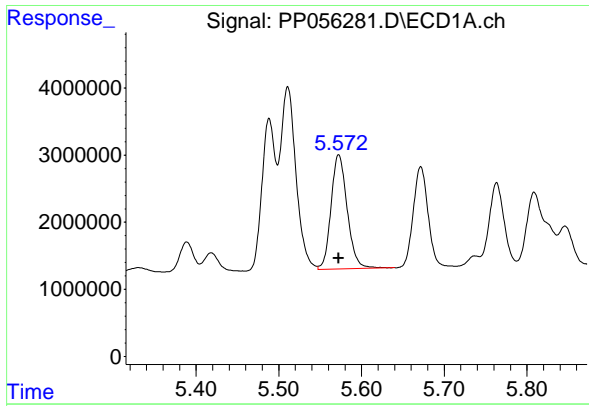
#17 AR-1242-2

R.T.: 5.511 min
 Delta R.T.: 0.000 min
 Response: 35929951
 Conc: 500.00 ng/ml



#17 AR-1242-2

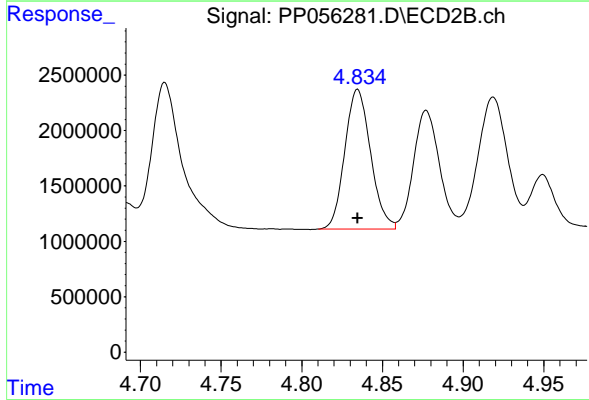
R.T.: 4.659 min
 Delta R.T.: 0.000 min
 Response: 25802614
 Conc: 500.00 ng/ml



#18 AR-1242-3

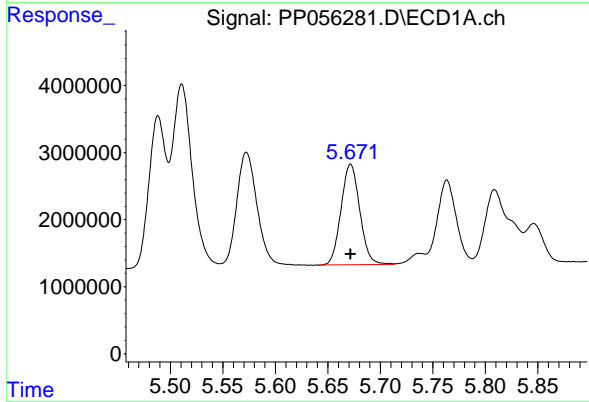
R.T.: 5.572 min
Delta R.T.: 0.000 min
Response: 23152027
Conc: 500.00 ng/ml

Instrument :
ECD_P
ClientSampleId :
AR1242ICC500



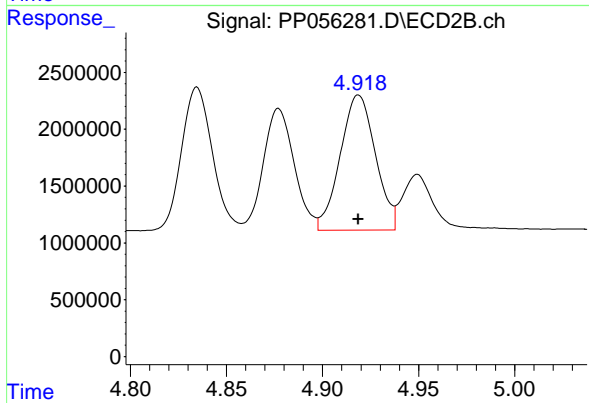
#18 AR-1242-3

R.T.: 4.835 min
Delta R.T.: 0.000 min
Response: 14039846
Conc: 500.00 ng/ml



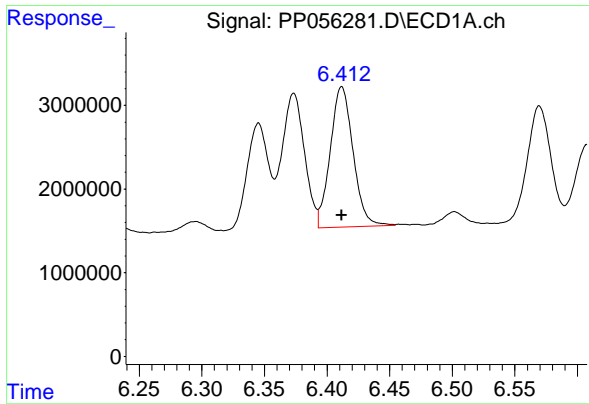
#19 AR-1242-4

R.T.: 5.672 min
Delta R.T.: 0.000 min
Response: 18611049
Conc: 500.00 ng/ml



#19 AR-1242-4

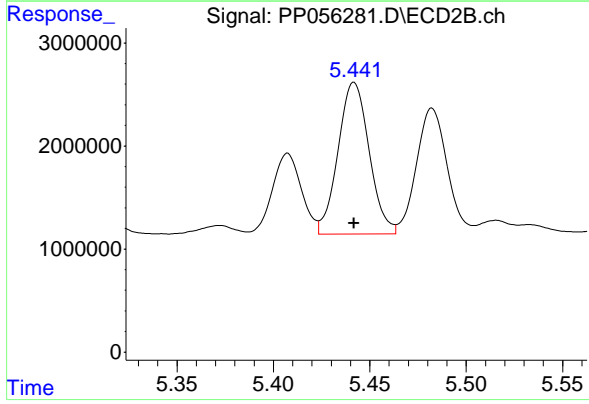
R.T.: 4.919 min
Delta R.T.: 0.000 min
Response: 15127026
Conc: 500.00 ng/ml



#20 AR-1242-5

R.T.: 6.412 min
 Delta R.T.: 0.000 min
 Response: 21279303
 Conc: 500.00 ng/ml

Instrument :
 ECD_P
 ClientSampleId :
 AR1242ICC500



#20 AR-1242-5

R.T.: 5.442 min
 Delta R.T.: 0.000 min
 Response: 16581780
 Conc: 500.00 ng/ml