

Data Path : Z:\pestpcbsrv\HPCHEM1\ECD\_P\Data\PP041119\  
 Data File : PP029824.D  
 Signal(s) : Signal #1: ECD1A.CH Signal #2: ECD2B.CH  
 Acq On : 10 Apr 2019 18:19  
 Operator : EI\MA  
 Sample : K2199-08  
 Misc : LOT#M00093  
 ALS Vial : 11 Sample Multiplier: 1

Instrument :  
 ECD\_P  
 ClientSampleId :  
 OR-03-040819-B

Integration File signal 1: autoint1.e  
 Integration File signal 2: autoint2.e  
 Quant Time: Apr 11 04:30:46 2019  
 Quant Method : Z:\pestpcbsrv\HPCHEM1\ECD\_P\methods\PP041119.M  
 Quant Title : 8080.M  
 QLast Update : Thu Apr 11 04:26:48 2019  
 Response via : Initial Calibration  
 Integrator: ChemStation 6890 Scale Mode: Large solvent peaks clipped

Volume Inj. : 2 µl  
 Signal #1 Phase : ZB-CLPesticides-1 Signal #2 Phase: ZB-CLPesticides-2  
 Signal #1 Info : 30M x 0.32mm x0.5 Signal #2 Info : 30M x 0.32mm x 0.25µm

Compound	RT#1	RT#2	Resp#1	Resp#2	ng/ml	ng/ml
-----						
System Monitoring Compounds						
4) S 2,4-DCAA	11.998	12.204	19636003	25889378	817.334	682.973
Target Compounds						
8) T DICHLORPROP	13.454	13.643	3941154	2715827	128.295	75.349 #
-----						

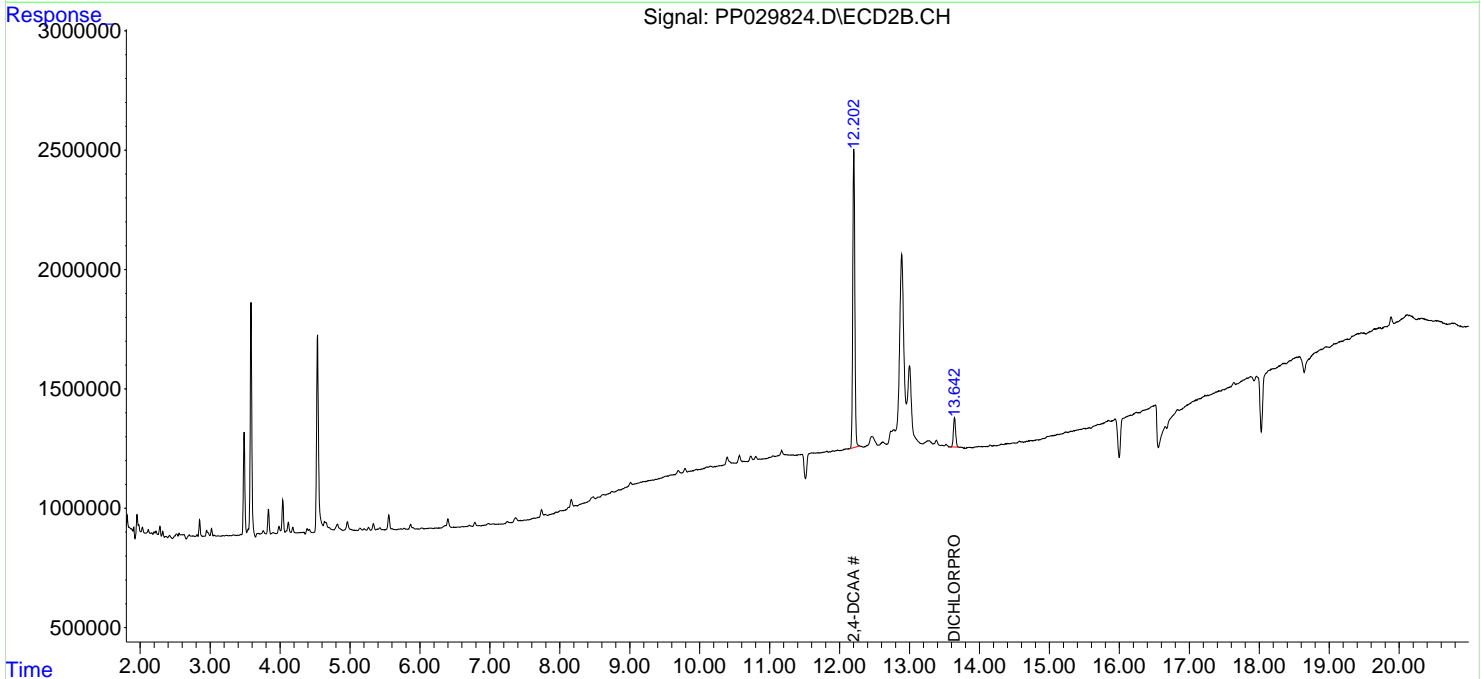
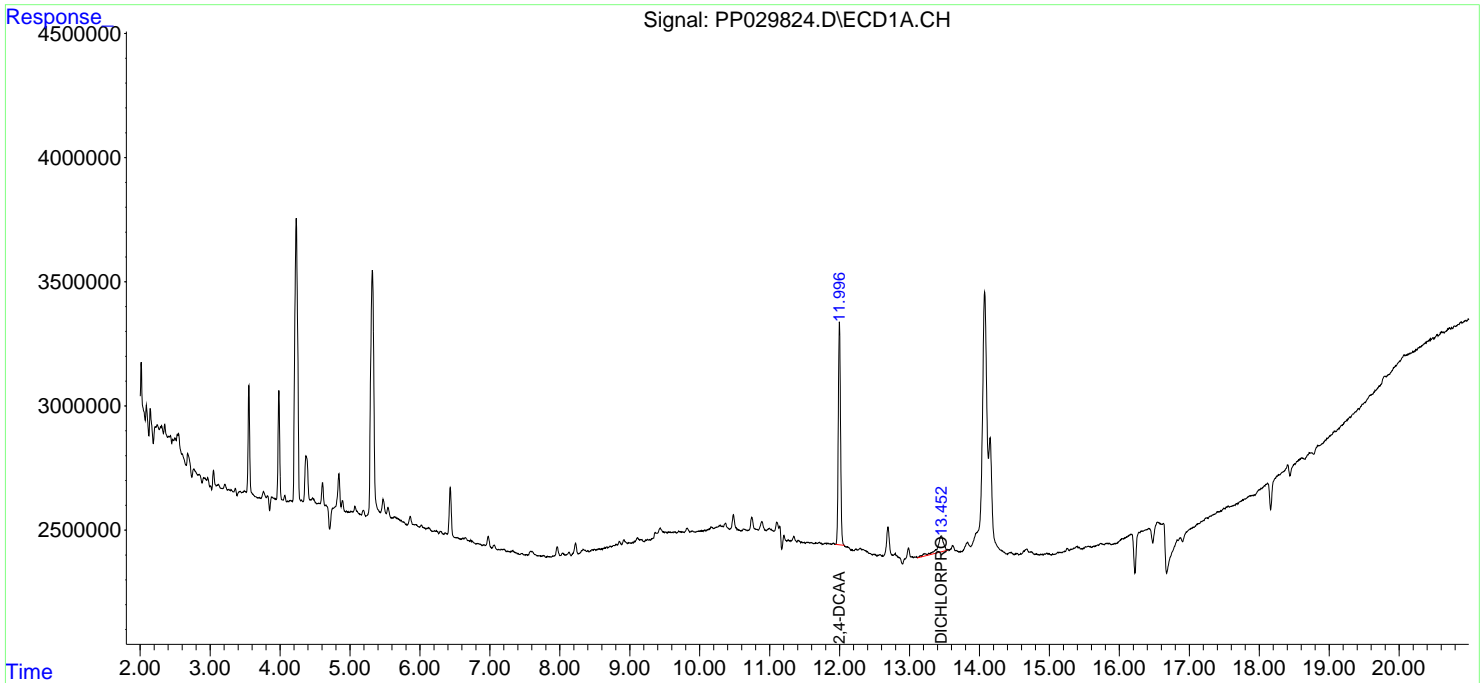
(f)=RT Delta > 1/2 Window (#)=Amounts differ by > 25% (m)=manual int.

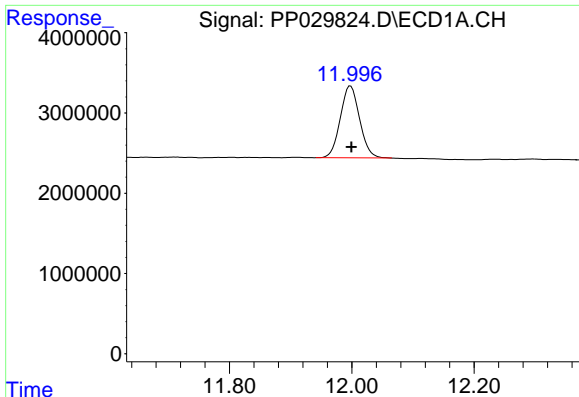
Data Path : Z:\pestpcbsrv\HPCHEM1\ECD\_P\Data\PP041119\  
 Data File : PP029824.D  
 Signal(s) : Signal #1: ECD1A.CH Signal #2: ECD2B.CH  
 Acq On : 10 Apr 2019 18:19  
 Operator : EI\MA  
 Sample : K2199-08  
 Misc : LOT#M00093  
 ALS Vial : 11 Sample Multiplier: 1

Instrument :  
 ECD\_P  
 ClientSampleId :  
 OR-03-040819-B

Integration File signal 1: autoint1.e  
 Integration File signal 2: autoint2.e  
 Quant Time: Apr 11 04:30:46 2019  
 Quant Method : Z:\pestpcbsrv\HPCHEM1\ECD\_P\methods\PP041119.M  
 Quant Title : 8080.M  
 QLast Update : Thu Apr 11 04:26:48 2019  
 Response via : Initial Calibration  
 Integrator: ChemStation 6890 Scale Mode: Large solvent peaks clipped

Volume Inj. : 2 µl  
 Signal #1 Phase : ZB-CLPesticides-1 Signal #2 Phase: ZB-CLPesticides-2  
 Signal #1 Info : 30M x 0.32mm x0.5 Signal #2 Info : 30M x 0.32mm x 0.25µm

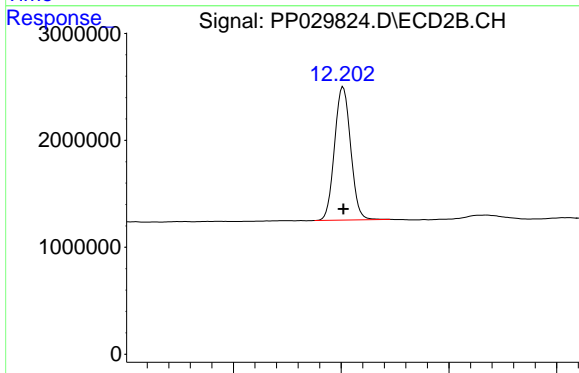




#4 2,4-DCAA

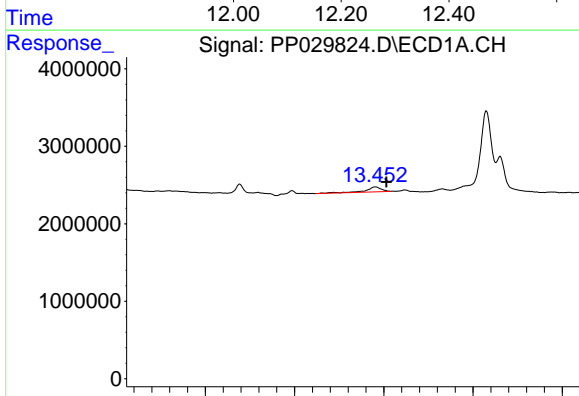
R.T.: 11.998 min  
 Delta R.T.: -0.002 min  
 Response: 19636003  
 Conc: 817.33 ng/ml

Instrument :  
 ECD\_P  
 ClientSampled :  
 OR-03-040819-B



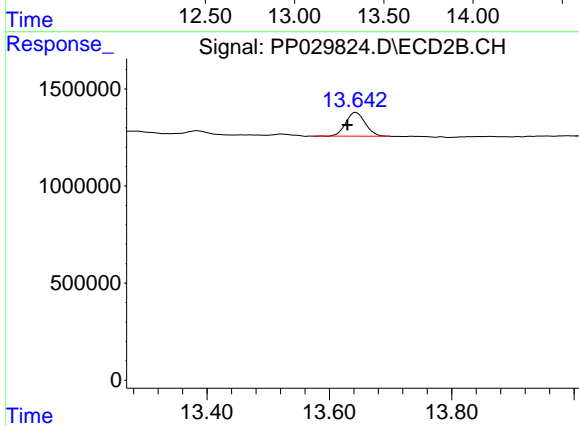
#4 2,4-DCAA

R.T.: 12.204 min  
 Delta R.T.: 0.000 min  
 Response: 25889378  
 Conc: 682.97 ng/ml



#8 DICHLORPROP

R.T.: 13.454 min  
 Delta R.T.: -0.061 min  
 Response: 3941154  
 Conc: 128.30 ng/ml



#8 DICHLORPROP

R.T.: 13.643 min  
 Delta R.T.: 0.014 min  
 Response: 2715827  
 Conc: 75.35 ng/ml