

Data Path : P:\HPCHEM1\ECD P\Data\PP041718\
 Data File : PP025110.D
 Signal(s) : Signal #1: ECD1A.CH Signal #2: ECD2B.CH
 Acq On : 17 Apr 2018 21:43
 Operator : UA/AJ
 Sample : J2387-01
 Misc :
 ALS Vial : 16 Sample Multiplier: 1

Instrument :
 ECD_P
 ClientSampleId :
 20180239-COMPOSITE-A

Integration File signal 1: autoint1.e
 Integration File signal 2: autoint2.e
 Quant Time: Apr 18 07:21:48 2018
 Quant Method : P:\HPCHEM1\ECD_P\methods\PP032918.M
 Quant Title : 8080.M
 QLast Update : Mon Apr 02 02:18:04 2018
 Response via : Initial Calibration
 Integrator: ChemStation 6890 Scale Mode: Large solvent peaks clipped

Volume Inj. : 2 µl
 Signal #1 Phase : Rtx-CLPesticides Signal #2 Phase: Rtx-CLPesticides2
 Signal #1 Info : 30M x 0.32mm x0.5 Signal #2 Info : 30M x 0.32mm x 0.25µm

Compound	RT#1	RT#2	Resp#1	Resp#2	ng/ml	ng/ml
----------	------	------	--------	--------	-------	-------

 System Monitoring Compounds

4) S	2,4-DCAA	11.412	11.117	145.6E6	144.3E6	275.116	243.244
------	----------	--------	--------	---------	---------	---------	---------

Target Compounds

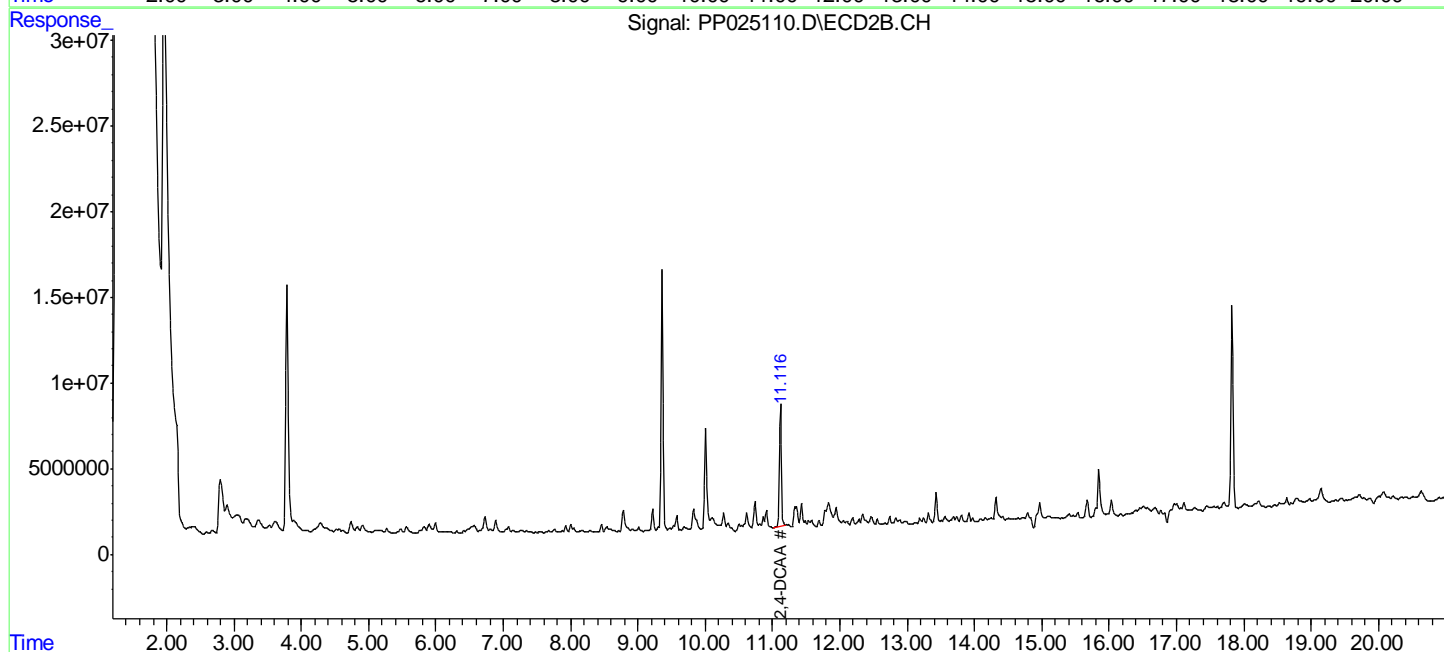
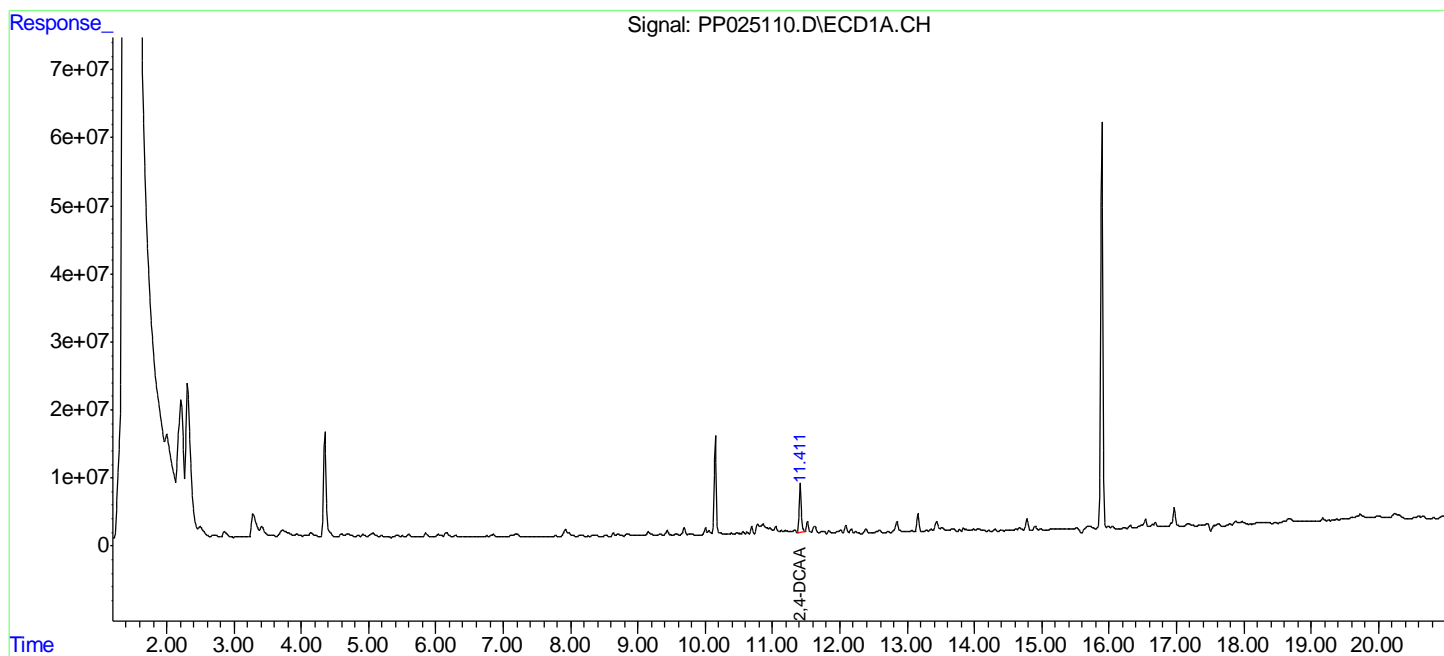
(f)=RT Delta > 1/2 Window (#)=Amounts differ by > 25% (m)=manual int.

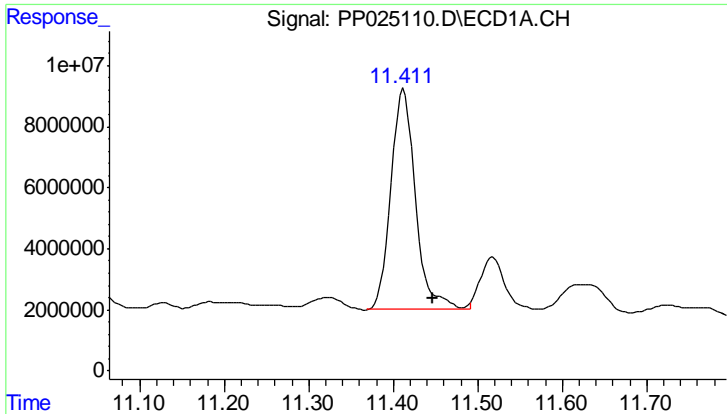
Data Path : P:\HPCHEM1\ECD P\Data\PP041718\
 Data File : PP025110.D
 Signal(s) : Signal #1: ECD1A.CH Signal #2: ECD2B.CH
 Acq On : 17 Apr 2018 21:43
 Operator : UA/AJ
 Sample : J2387-01
 Misc :
 ALS Vial : 16 Sample Multiplier: 1

Instrument :
 ECD_P
 ClientSampleId :
 20180239-COMPOSITE-A

Integration File signal 1: autoint1.e
 Integration File signal 2: autoint2.e
 Quant Time: Apr 18 07:21:48 2018
 Quant Method : P:\HPCHEM1\ECD_P\methods\PP032918.M
 Quant Title : 8080.M
 QLast Update : Mon Apr 02 02:18:04 2018
 Response via : Initial Calibration
 Integrator: ChemStation 6890 Scale Mode: Large solvent peaks clipped

Volume Inj. : 2 ul
 Signal #1 Phase : Rtx-CLPesticides Signal #2 Phase: Rtx-CLPesticides2
 Signal #1 Info : 30M x 0.32mm x0.5 Signal #2 Info : 30M x 0.32mm x 0.25um

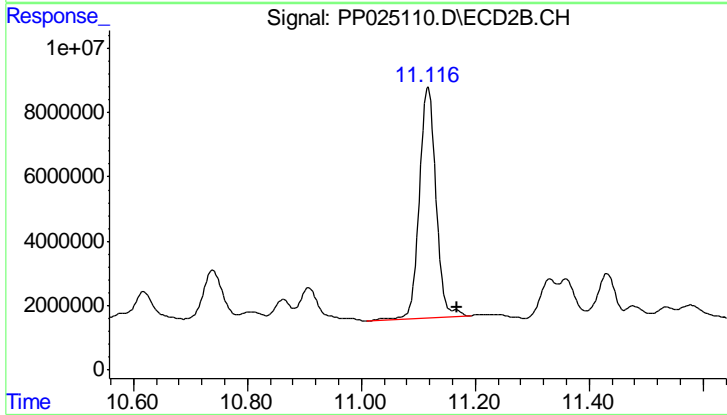




#4 2,4-DCAA

R.T.: 11.412 min
Delta R.T.: -0.034 min
Response: 145611520
Conc: 275.12 ng/ml

Instrument :
ECD_P
ClientSampled :
20180239-COMPOSITE-A



#4 2,4-DCAA

R.T.: 11.117 min
Delta R.T.: -0.049 min
Response: 144344219
Conc: 243.24 ng/ml