

Data Path : Z:\pestpcbsrv\HPCHEM1\ECD_P\Data\PP050424\
 Data File : PP064777.D
 Signal(s) : Signal #1: ECD1A.ch Signal #2: ECD2B.ch
 Acq On : 04 May 2024 16:07
 Operator : YP\AJ
 Sample : P2384-20 10X
 Misc :
 ALS Vial : 43 Sample Multiplier: 1

Instrument :
 ECD_P
 ClientSampleId :
 CABLE-20

Integration File signal 1: autoint1.e
 Integration File signal 2: autoint2.e
 Quant Time: May 05 22:49:09 2024
 Quant Method : Z:\pestpcbsrv\HPCHEM1\ECD_P\methods\PP043024.M
 Quant Title : GC EXTRACTABLES
 QLast Update : Wed May 01 05:01:39 2024
 Response via : Initial Calibration
 Integrator: ChemStation

Volume Inj. : 2 µl
 Signal #1 Phase : ZB-MR1 Signal #2 Phase: ZB-MR2
 Signal #1 Info : 30Mx0.32mmx 0.50µ Signal #2 Info : 30M x 0.32mm x 0.25µm

Compound	RT#1	RT#2	Resp#1	Resp#2	ng/ml	ng/ml

System Monitoring Compounds						
1) SA Tetrachlo...	4.376	3.453	2672916	4042074	1.519	1.714
2) SA Decachlor...	10.063	8.348	3869786	5158187	4.349	2.765 #
Target Compounds						
29) L6 AR-1254-4	0.000	6.084	0	922864	N.D.	12.835 #
35) L7 AR-1260-5	8.329f	0.000	930749	0	9.869	N.D. #
37) L8 AR-1262-2	8.329f	0.000	930749	0	9.606	N.D. #
39) L8 AR-1262-4	8.685	7.337f	720520	1930781	12.805	12.470
42) L9 AR-1268-2	8.685	7.337f	720520	1930781	6.067	8.004 #

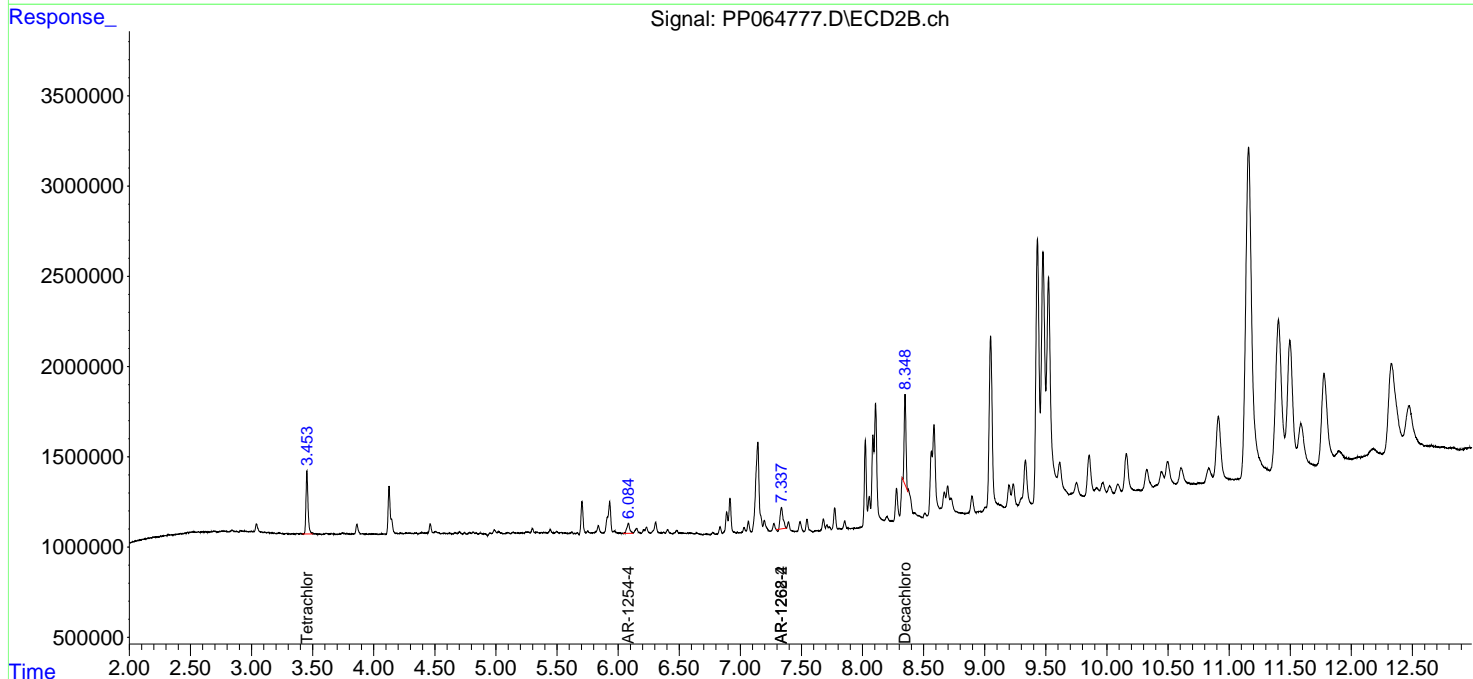
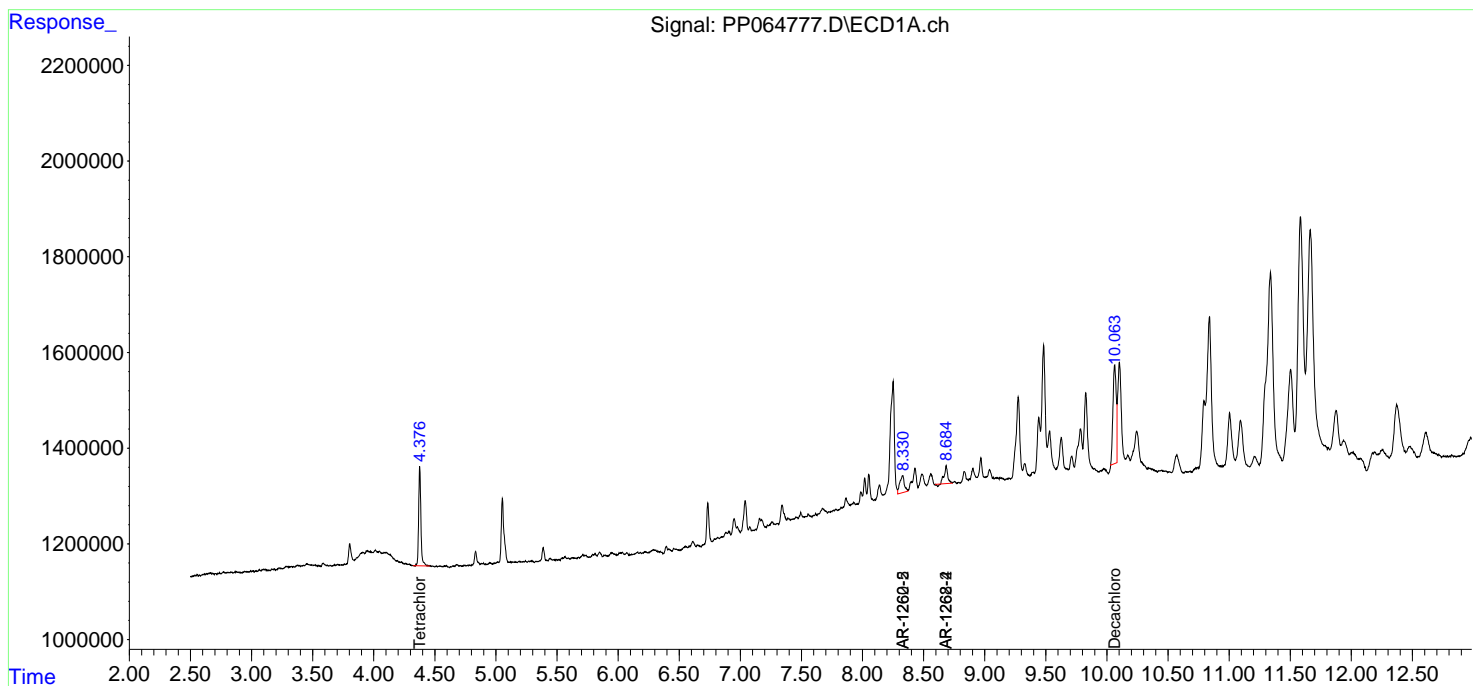
(f)=RT Delta > 1/2 Window (#)=Amounts differ by > 25% (m)=manual int.

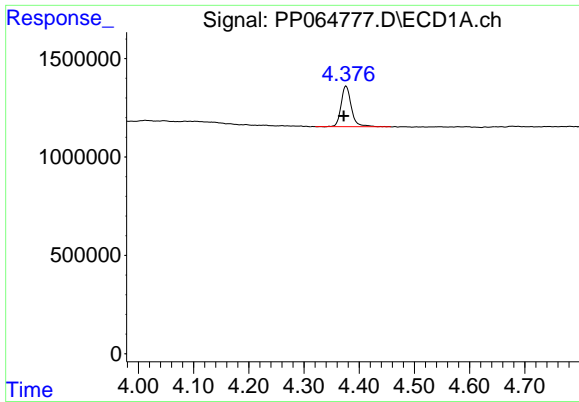
Data Path : Z:\pestpcbsrv\HPCHEM1\ECD_P\Data\PP050424\
 Data File : PP064777.D
 Signal(s) : Signal #1: ECD1A.ch Signal #2: ECD2B.ch
 Acq On : 04 May 2024 16:07
 Operator : YP\AJ
 Sample : P2384-20 10X
 Misc :
 ALS Vial : 43 Sample Multiplier: 1

Instrument :
 ECD_P
ClientSampleId :
 CABLE-20

Integration File signal 1: autoint1.e
 Integration File signal 2: autoint2.e
 Quant Time: May 05 22:49:09 2024
 Quant Method : Z:\pestpcbsrv\HPCHEM1\ECD_P\methods\PP043024.M
 Quant Title : GC EXTRACTABLES
 QLast Update : Wed May 01 05:01:39 2024
 Response via : Initial Calibration
 Integrator: ChemStation

Volume Inj. : 2 µl
 Signal #1 Phase : ZB-MR1 Signal #2 Phase: ZB-MR2
 Signal #1 Info : 30Mx0.32mmx 0.50µ Signal #2 Info : 30M x 0.32mm x 0.25µm

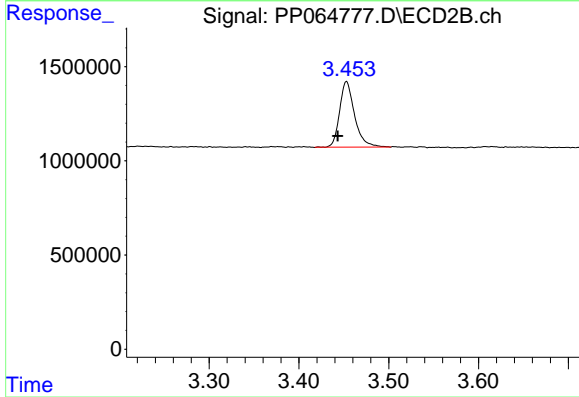




#1 Tetrachloro-m-xylene

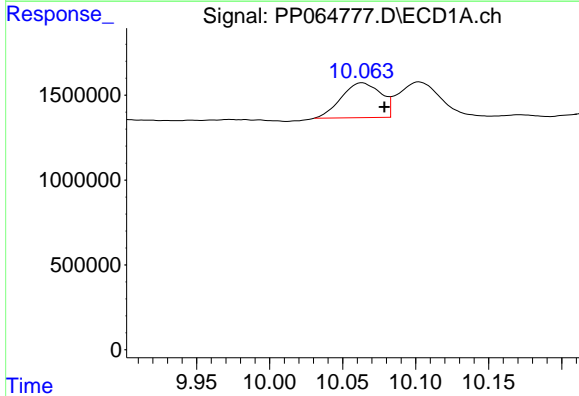
R.T.: 4.376 min
 Delta R.T.: 0.004 min
 Response: 2672916
 Conc: 1.52 ng/ml

Instrument :
 ECD_P
 ClientSampleId :
 CABLE-20



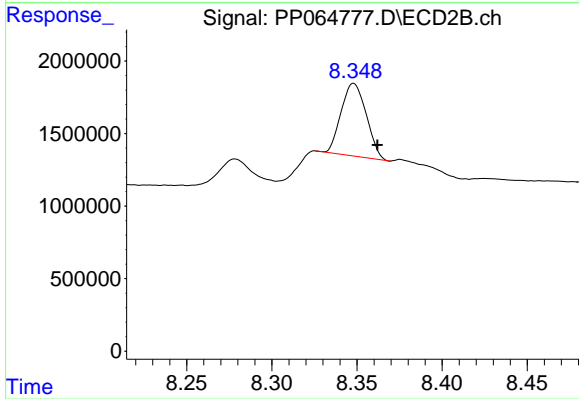
#1 Tetrachloro-m-xylene

R.T.: 3.453 min
 Delta R.T.: 0.010 min
 Response: 4042074
 Conc: 1.71 ng/ml



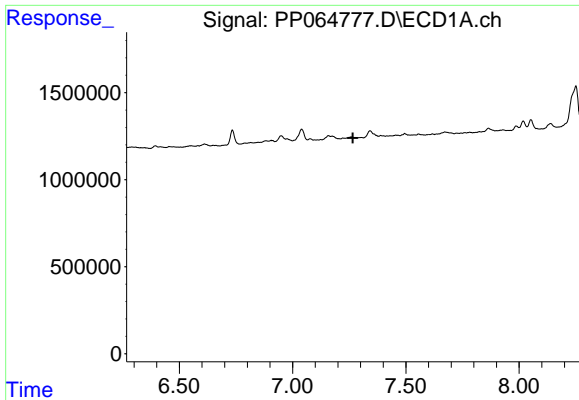
#2 Decachlorobiphenyl

R.T.: 10.063 min
 Delta R.T.: -0.015 min
 Response: 3869786
 Conc: 4.35 ng/ml



#2 Decachlorobiphenyl

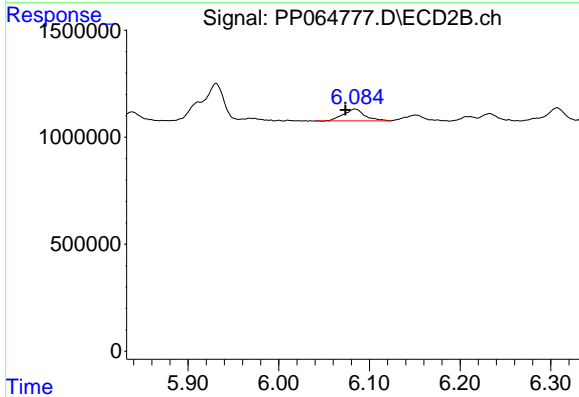
R.T.: 8.348 min
 Delta R.T.: -0.014 min
 Response: 5158187
 Conc: 2.77 ng/ml



#29 AR-1254-4

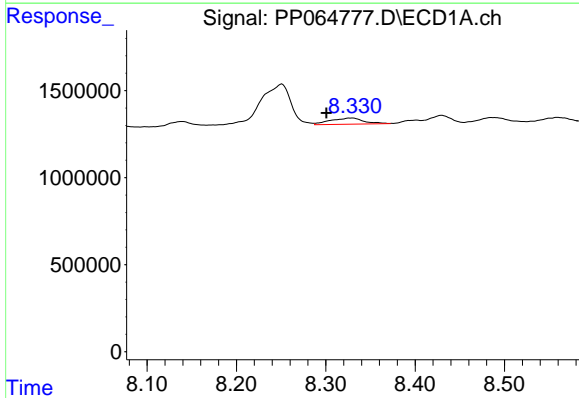
R.T.: 0.000 min
 Exp R.T.: 7.266 min
 Response: 0
 Conc: N.D.

Instrument :
 ECD_P
 ClientSampleId :
 CABLE-20



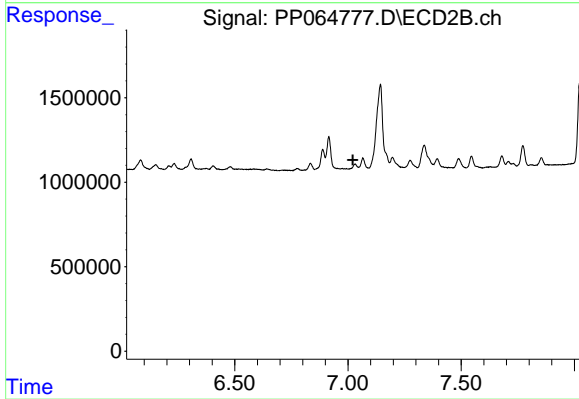
#29 AR-1254-4

R.T.: 6.084 min
 Delta R.T.: 0.011 min
 Response: 922864
 Conc: 12.83 ng/ml



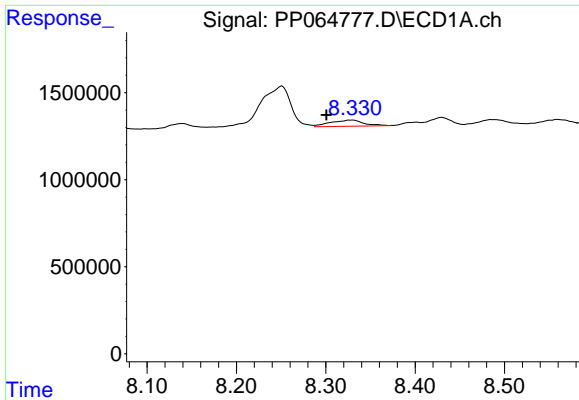
#35 AR-1260-5

R.T.: 8.329 min
 Delta R.T.: 0.028 min
 Response: 930749
 Conc: 9.87 ng/ml



#35 AR-1260-5

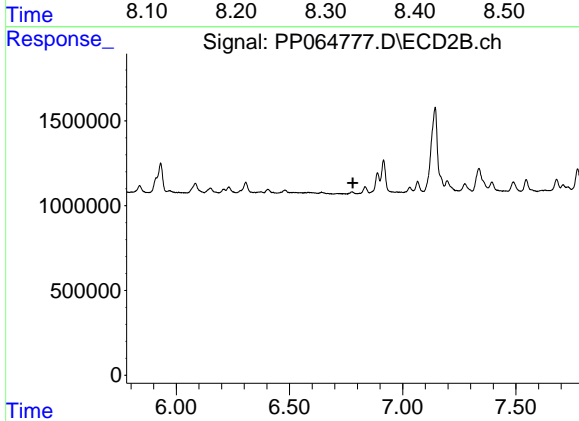
R.T.: 0.000 min
 Exp R.T.: 7.021 min
 Response: 0
 Conc: N.D.



#37 AR-1262-2

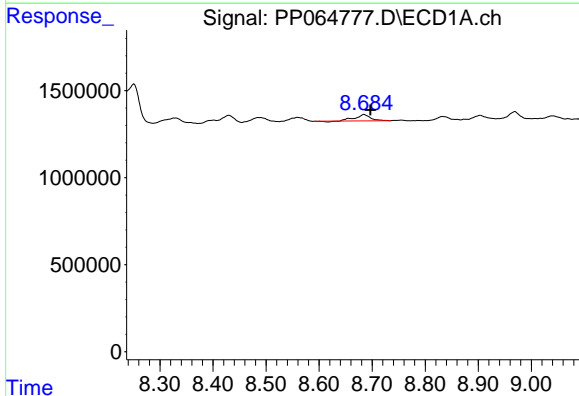
R.T.: 8.329 min
 Delta R.T.: 0.028 min
 Response: 930749
 Conc: 9.61 ng/ml

Instrument :
 ECD_P
 ClientSampleId :
 CABLE-20



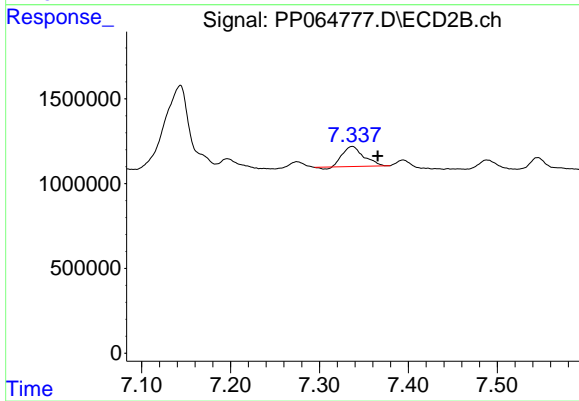
#37 AR-1262-2

R.T.: 0.000 min
 Exp R.T. : 6.780 min
 Response: 0
 Conc: N.D.



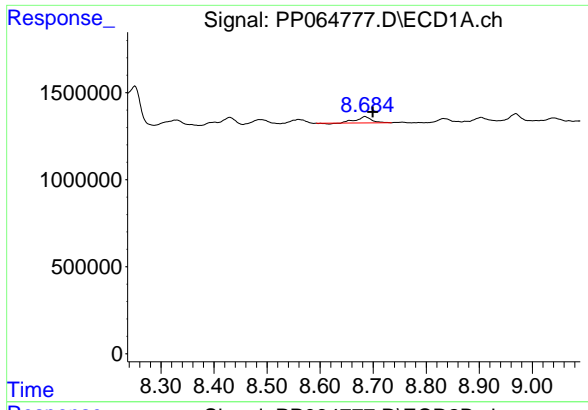
#39 AR-1262-4

R.T.: 8.685 min
 Delta R.T.: -0.012 min
 Response: 720520
 Conc: 12.81 ng/ml



#39 AR-1262-4

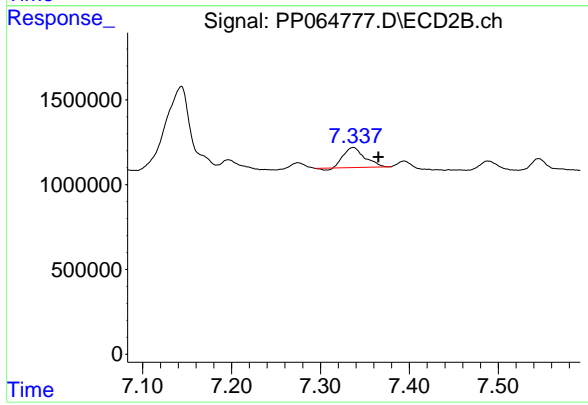
R.T.: 7.337 min
 Delta R.T.: -0.029 min
 Response: 1930781
 Conc: 12.47 ng/ml



#42 AR-1268-2

R.T.: 8.685 min
 Delta R.T.: -0.014 min
 Response: 720520
 Conc: 6.07 ng/ml

Instrument :
 ECD_P
 ClientSampleId :
 CABLE-20



#42 AR-1268-2

R.T.: 7.337 min
 Delta R.T.: -0.028 min
 Response: 1930781
 Conc: 8.00 ng/ml