

Data Path : Z:\pestpcbsrv\HPCHEM1\ECD\_P\Data\PP050522\  
 Data File : PP047059.D  
 Signal(s) : Signal #1: ECD1A.ch Signal #2: ECD2B.ch  
 Acq On : 05 May 2022 19:05  
 Operator : YP\AJ  
 Sample : AR1248CCC500  
 Misc :  
 ALS Vial : 5 Sample Multiplier: 1

**Instrument :**  
 ECD\_P  
**ClientSampleId :**  
 AR1248CCC500

**Manual Integrations**  
**APPROVED**  
 Reviewed By :Yogesh Patel 05/09/2022  
 Supervised By :mohammad ahmed 05/09/2022

Integration File signal 1: autoint1.e  
 Integration File signal 2: autoint2.e  
 Quant Time: May 06 01:18:59 2022  
 Quant Method : Z:\pestpcbsrv\HPCHEM1\ECD\_P\methods\PP042222.M  
 Quant Title : GC EXTRACTABLES  
 QLast Update : Thu May 05 11:06:44 2022  
 Response via : Initial Calibration  
 Integrator: ChemStation

Volume Inj. : 2 µl  
 Signal #1 Phase : ZB-MR1 Signal #2 Phase: ZB-MR2  
 Signal #1 Info : 30Mx0.32mmx 0.50µ Signal #2 Info : 30M x 0.32mm x 0.25µm

Compound	RT#1	RT#2	Resp#1	Resp#2	ng/ml	ng/ml
-----						
System Monitoring Compounds						
1) SA Tetrachlo...	3.855	3.122	125.4E6	184.9E6	51.948	56.351
2) SA Decachlor...	9.925	8.431	72988937	128.7E6	49.601	53.976
Target Compounds						
21) L5 AR-1248-1	5.098	4.250	22530975	34504976	539.082m	502.140m
22) L5 AR-1248-2	5.392f	4.500	25607134	51061822	433.258m	546.161 #
23) L5 AR-1248-3	5.611	4.542	34256882	53024274	490.426	543.157
24) L5 AR-1248-4	6.048f	4.722	37177258	63165853	484.828	536.587
25) L5 AR-1248-5	6.089f	5.139f	36486296	67287912	469.104	552.171m
-----						

(f)=RT Delta > 1/2 Window (#)=Amounts differ by > 25% (m)=manual int.

Data Path : Z:\pestpcbsrv\HPCHEM1\ECD\_P\Data\PP050522\  
 Data File : PP047059.D  
 Signal(s) : Signal #1: ECD1A.ch Signal #2: ECD2B.ch  
 Acq On : 05 May 2022 19:05  
 Operator : YP\AJ  
 Sample : AR1248CCC500  
 Misc :  
 ALS Vial : 5 Sample Multiplier: 1

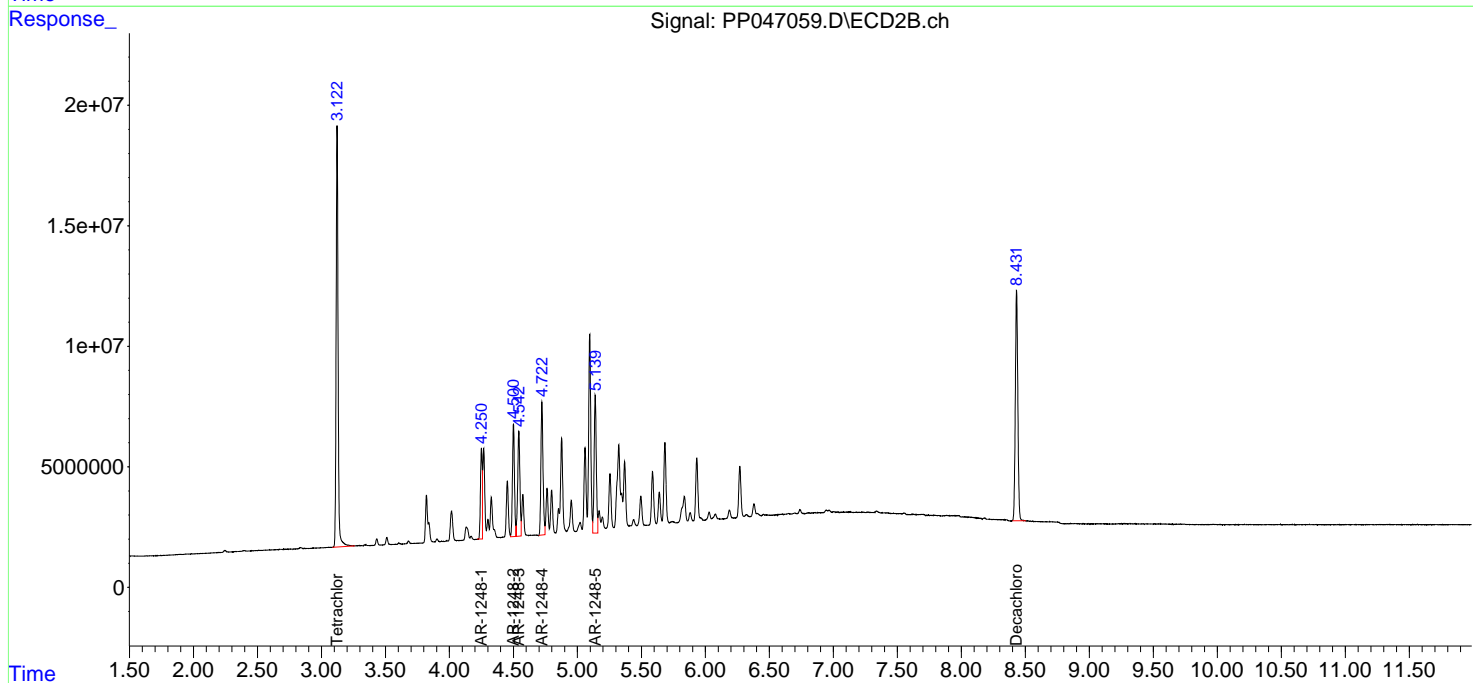
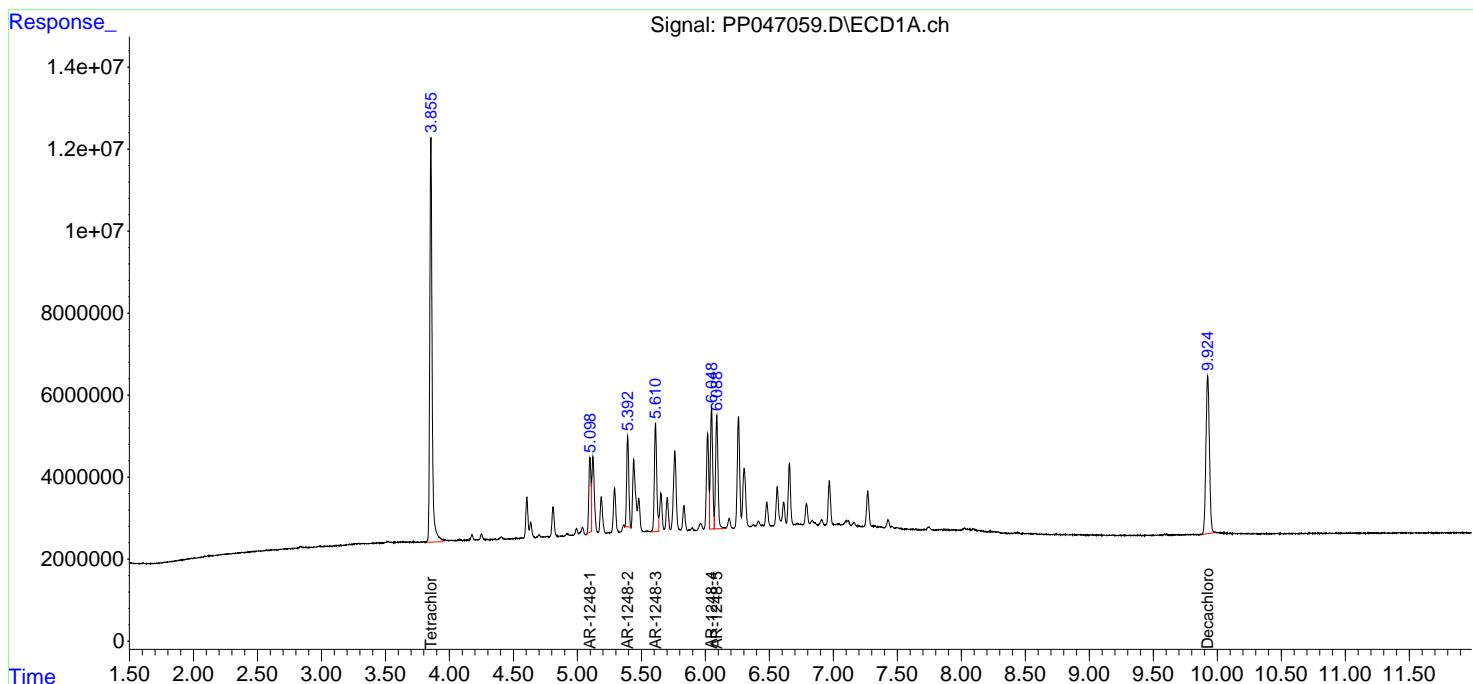
**Instrument :**  
 ECD\_P  
**ClientSampleId :**  
 AR1248CCC500

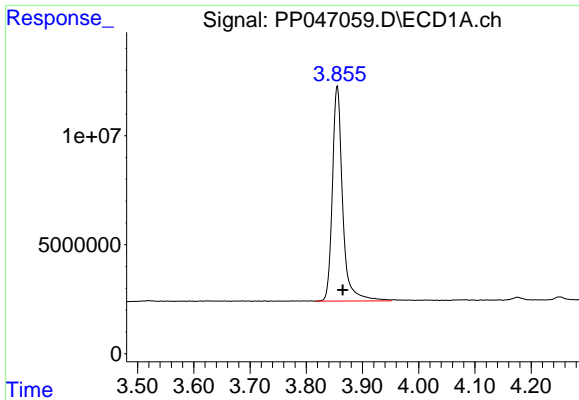
**Manual Integrations**  
**APPROVED**

Reviewed By :Yogesh Patel 05/09/2022  
 Supervised By :mohammad ahmed 05/09/2022

Integration File signal 1: autoint1.e  
 Integration File signal 2: autoint2.e  
 Quant Time: May 06 01:18:59 2022  
 Quant Method : Z:\pestpcbsrv\HPCHEM1\ECD\_P\methods\PP042222.M  
 Quant Title : GC EXTRACTABLES  
 QLast Update : Thu May 05 11:06:44 2022  
 Response via : Initial Calibration  
 Integrator: ChemStation

Volume Inj. : 2 µl  
 Signal #1 Phase : ZB-MR1 Signal #2 Phase: ZB-MR2  
 Signal #1 Info : 30Mx0.32mmx 0.50µ Signal #2 Info : 30M x 0.32mm x 0.25µm





#1 Tetrachloro-m-xylene

R.T.: 3.855 min  
 Delta R.T.: -0.010 min  
 Response: 125399943  
 Conc: 51.95 ng/ml

Instrument :

ECD\_P

ClientSampleId :

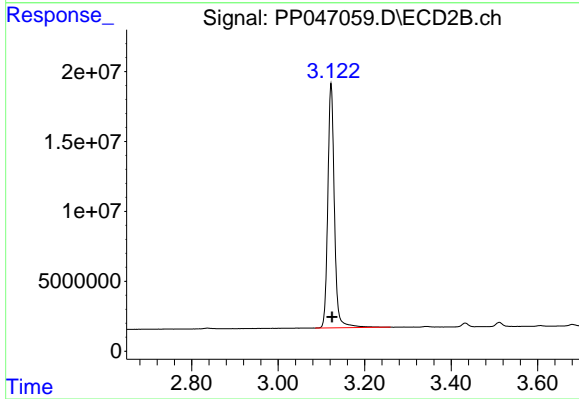
AR1248CCC500

Manual Integrations

APPROVED

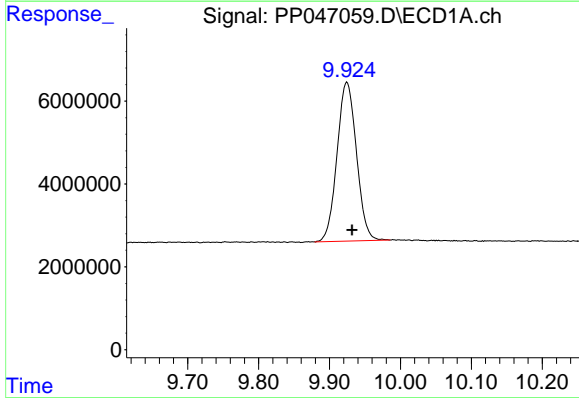
Reviewed By :Yogesh Patel 05/09/2022

Supervised By :mohammad ahmed 05/09/2022



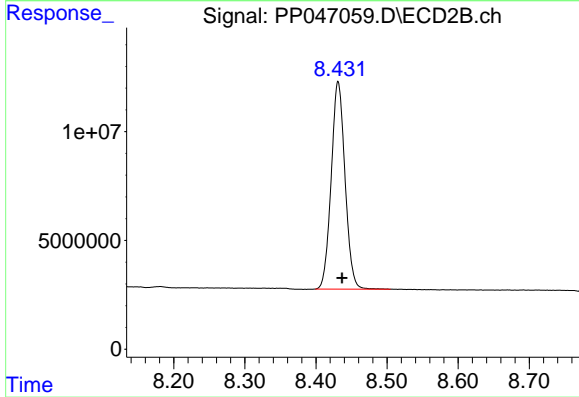
#1 Tetrachloro-m-xylene

R.T.: 3.122 min  
 Delta R.T.: -0.002 min  
 Response: 184853022  
 Conc: 56.35 ng/ml



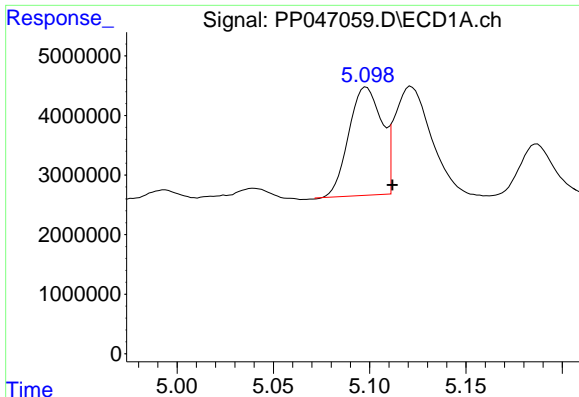
#2 Decachlorobiphenyl

R.T.: 9.925 min  
 Delta R.T.: -0.007 min  
 Response: 72988937  
 Conc: 49.60 ng/ml



#2 Decachlorobiphenyl

R.T.: 8.431 min  
 Delta R.T.: -0.005 min  
 Response: 128748538  
 Conc: 53.98 ng/ml



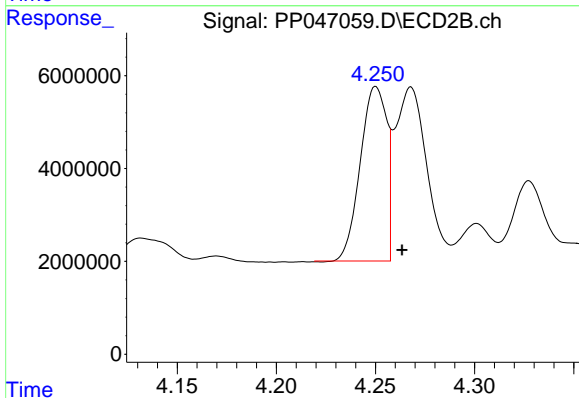
#21 AR-1248-1

R.T.: 5.098 min  
 Delta R.T.: -0.014 min  
 Response: 22530975  
 Conc: 539.08 ng/ml

Instrument :  
 ECD\_P  
 ClientSampleId :  
 AR1248CCC500

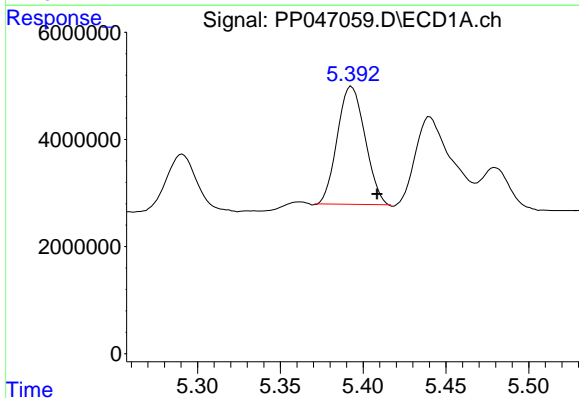
Manual Integrations  
 APPROVED

Reviewed By :Yogesh Patel 05/09/2022  
 Supervised By :mohammad ahmed 05/09/2022



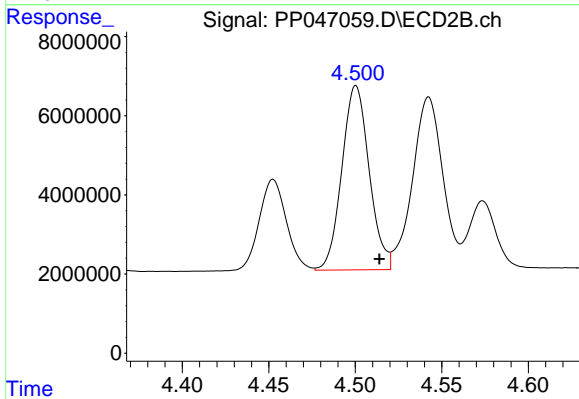
#21 AR-1248-1

R.T.: 4.250 min  
 Delta R.T.: -0.014 min  
 Response: 34504976  
 Conc: 502.14 ng/ml m



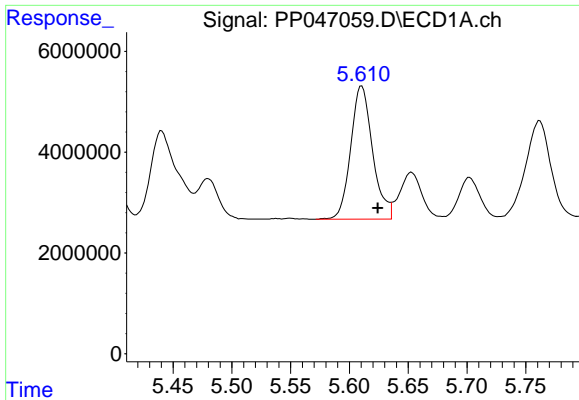
#22 AR-1248-2

R.T.: 5.392 min  
 Delta R.T.: -0.016 min  
 Response: 25607134  
 Conc: 433.26 ng/ml m



#22 AR-1248-2

R.T.: 4.500 min  
 Delta R.T.: -0.014 min  
 Response: 51061822  
 Conc: 546.16 ng/ml



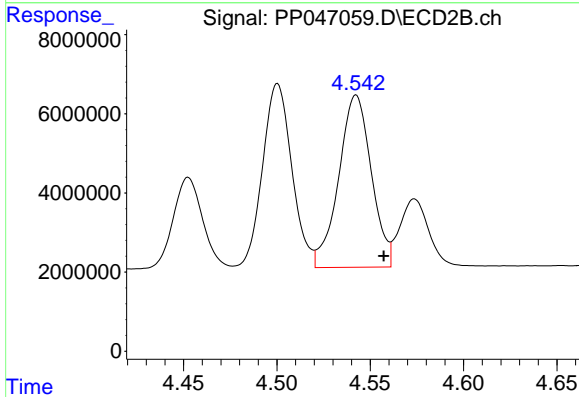
#23 AR-1248-3

R.T.: 5.611 min  
 Delta R.T.: -0.014 min  
 Response: 34256882  
 Conc: 490.43 ng/ml

Instrument :  
 ECD\_P  
 ClientSampleId :  
 AR1248CCC500

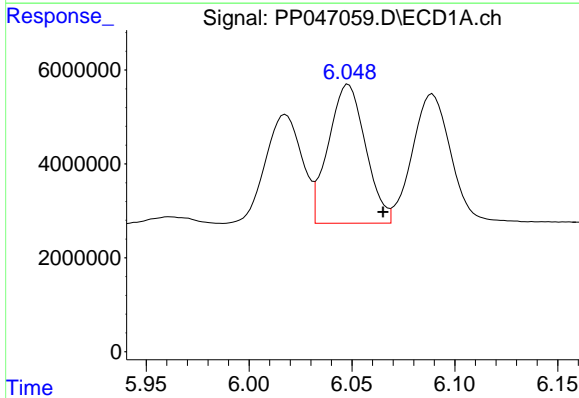
Manual Integrations  
 APPROVED

Reviewed By :Yogesh Patel 05/09/2022  
 Supervised By :mohammad ahmed 05/09/2022



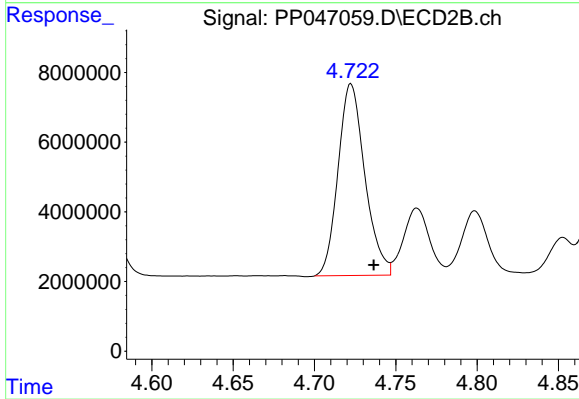
#23 AR-1248-3

R.T.: 4.542 min  
 Delta R.T.: -0.015 min  
 Response: 53024274  
 Conc: 543.16 ng/ml



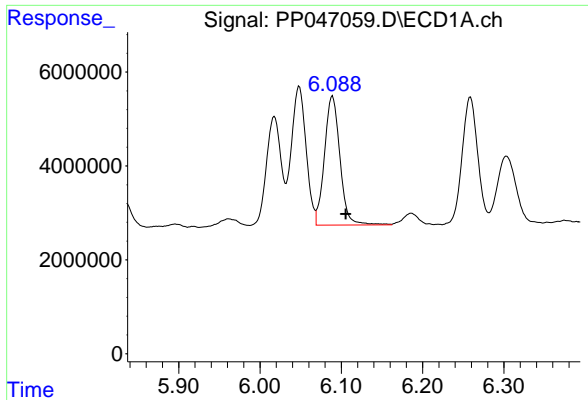
#24 AR-1248-4

R.T.: 6.048 min  
 Delta R.T.: -0.017 min  
 Response: 37177258  
 Conc: 484.83 ng/ml



#24 AR-1248-4

R.T.: 4.722 min  
 Delta R.T.: -0.014 min  
 Response: 63165853  
 Conc: 536.59 ng/ml



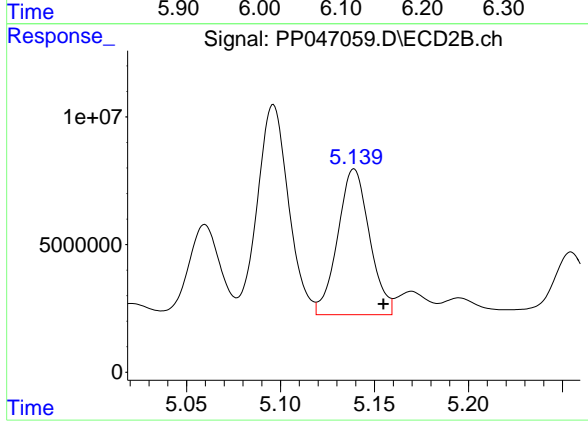
#25 AR-1248-5

R.T.: 6.089 min  
 Delta R.T.: -0.016 min  
 Response: 36486296  
 Conc: 469.10 ng/ml

Instrument :  
 ECD\_P  
 ClientSampleId :  
 AR1248CCC500

Manual Integrations  
 APPROVED

Reviewed By :Yogesh Patel 05/09/2022  
 Supervised By :mohammad ahmed 05/09/2022



#25 AR-1248-5

R.T.: 5.139 min  
 Delta R.T.: -0.016 min  
 Response: 67287912  
 Conc: 552.17 ng/ml m