

Data Path : Z:\pestpcbsrv\HPCHEM1\ECD_P\Data\PP051719\
 Data File : PP030205.D
 Signal(s) : Signal #1: ECD1A.CH Signal #2: ECD2B.CH
 Acq On : 17 May 2019 12:26
 Operator : EI/SJ
 Sample : I.BLK
 Misc :
 ALS Vial : 2 Sample Multiplier: 1

Instrument :
 ECD_P
 ClientSampleId :
 I.BLK

Integration File signal 1: autoint1.e
 Integration File signal 2: autoint2.e
 Quant Time: May 17 23:14:24 2019
 Quant Method : Z:\pestpcbsrv\HPCHEM1\ECD_P\methods\PP051619.M
 Quant Title : 8080.M
 QLast Update : Thu May 16 19:05:31 2019
 Response via : Initial Calibration
 Integrator: ChemStation 6890 Scale Mode: Large solvent peaks clipped

Volume Inj. : 2 µl
 Signal #1 Phase : ZB-CLPesticides-1 Signal #2 Phase: ZB-CLPesticides-2
 Signal #1 Info : 30M x 0.32mm x0.5 Signal #2 Info : 30M x 0.32mm x 0.25µm

Compound	RT#1	RT#2	Resp#1	Resp#2	ng/ml	ng/ml

System Monitoring Compounds						
4) S 2,4-DCAA	11.443	11.531	354.5E6	235.8E6	609.357	531.686

Target Compounds

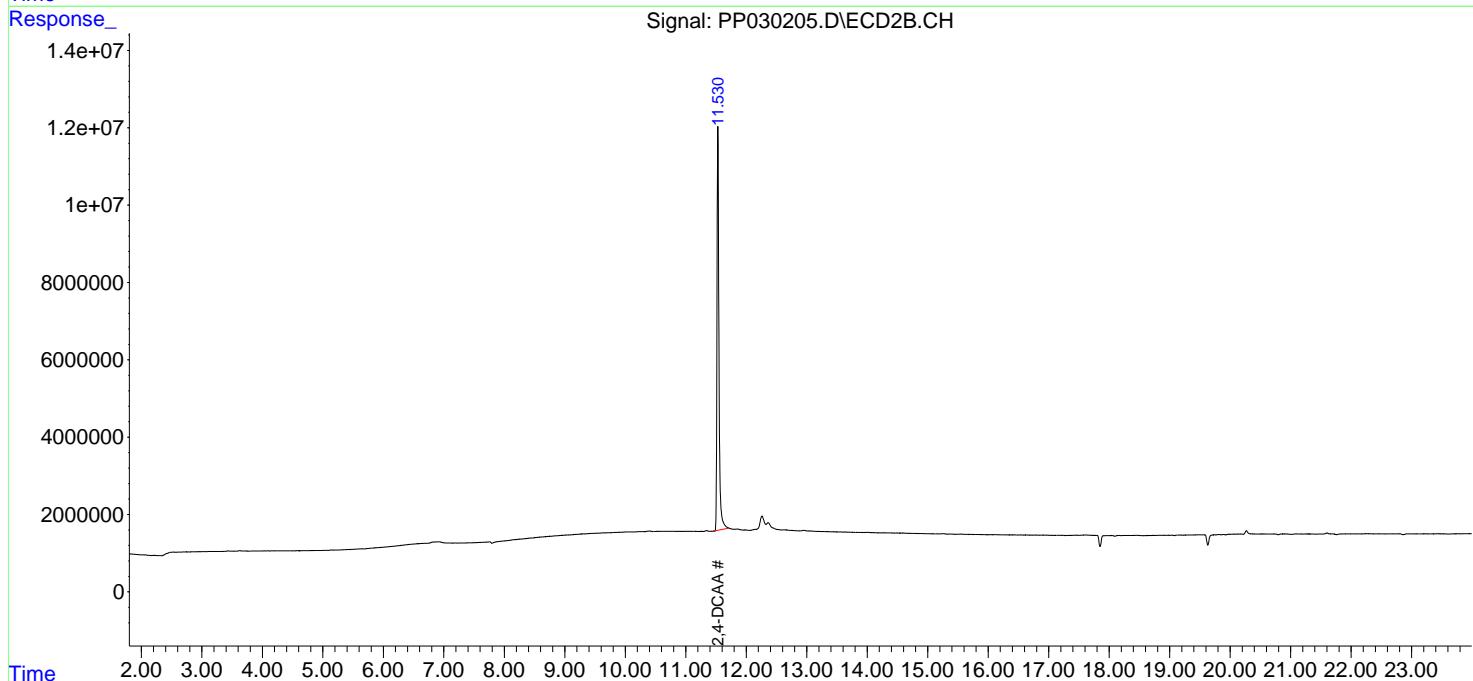
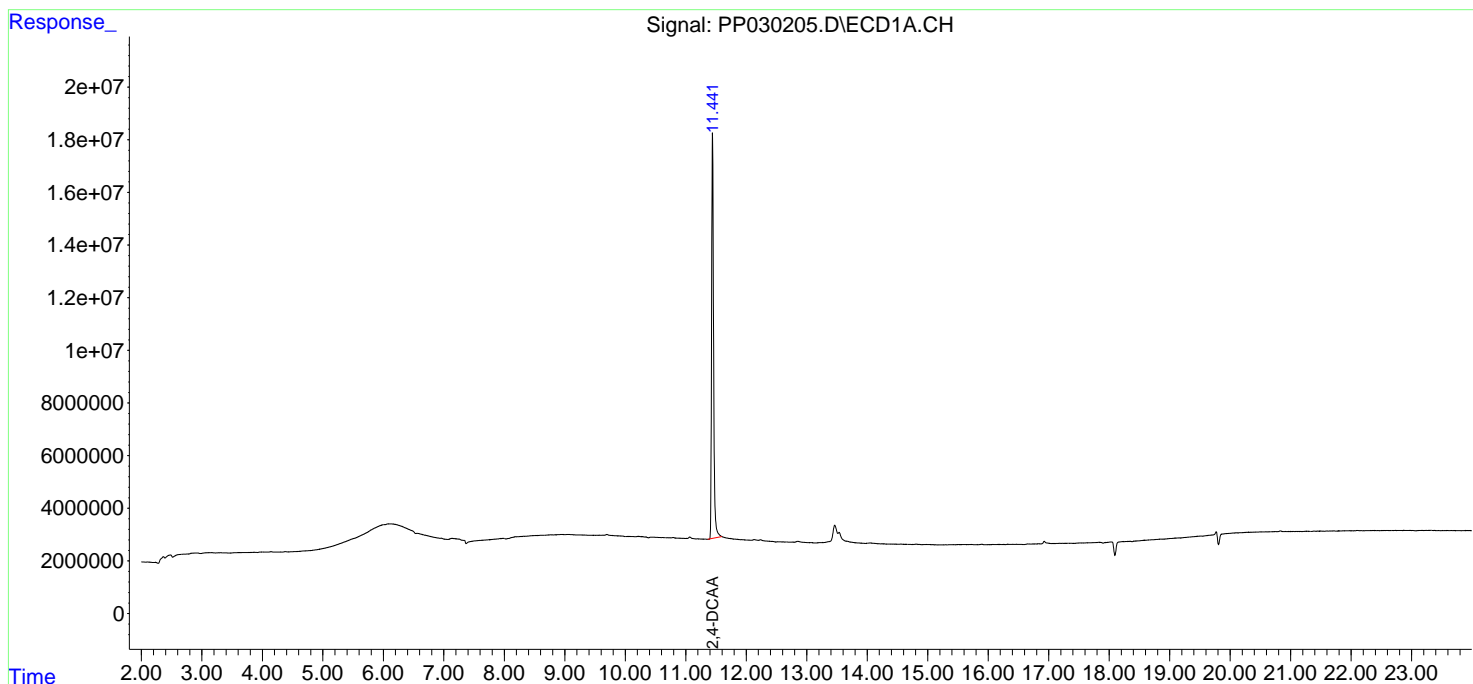
(f)=RT Delta > 1/2 Window (#)=Amounts differ by > 25% (m)=manual int.

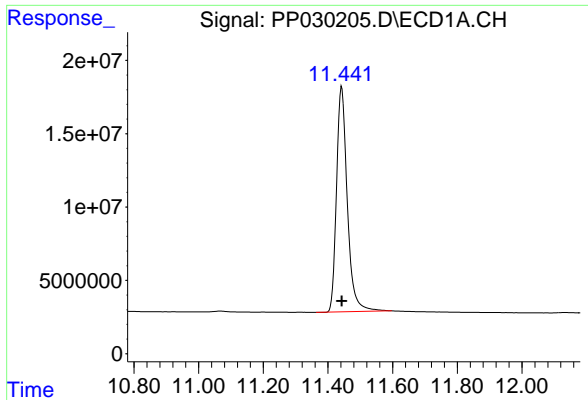
Data Path : Z:\pestpcbsrv\HPCHEM1\ECD_P\Data\PP051719\
 Data File : PP030205.D
 Signal(s) : Signal #1: ECD1A.CH Signal #2: ECD2B.CH
 Acq On : 17 May 2019 12:26
 Operator : EI/SJ
 Sample : I.BLK
 Misc :
 ALS Vial : 2 Sample Multiplier: 1

Instrument :
 ECD_P
 ClientSampleId :
 I.BLK

Integration File signal 1: autoint1.e
 Integration File signal 2: autoint2.e
 Quant Time: May 17 23:14:24 2019
 Quant Method : Z:\pestpcbsrv\HPCHEM1\ECD_P\methods\PP051619.M
 Quant Title : 8080.M
 QLast Update : Thu May 16 19:05:31 2019
 Response via : Initial Calibration
 Integrator: ChemStation 6890 Scale Mode: Large solvent peaks clipped

Volume Inj. : 2 µl
 Signal #1 Phase : ZB-CLPesticides-1 Signal #2 Phase: ZB-CLPesticides-2
 Signal #1 Info : 30M x 0.32mm x0.5 Signal #2 Info : 30M x 0.32mm x 0.25µm

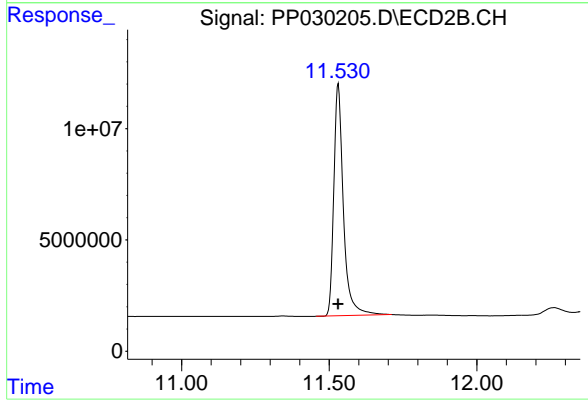




#4 2,4-DCAA

R.T.: 11.443 min
Delta R.T.: 0.000 min
Response: 354484432
Conc: 609.36 ng/ml

Instrument :
ECD_P
ClientSampleId :
I.BLK



#4 2,4-DCAA

R.T.: 11.531 min
Delta R.T.: 0.000 min
Response: 235769883
Conc: 531.69 ng/ml