

Data Path : Z:\pestpcbsrv\HPCHEM1\ECD_P\Data\PP060222\
 Data File : PP048308.D
 Signal(s) : Signal #1: ECD1A.ch Signal #2: ECD2B.ch
 Acq On : 02 Jun 2022 10:43
 Operator : YP\AJ
 Sample : N2953-08
 Misc :
 ALS Vial : 9 Sample Multiplier: 1

Instrument :
 ECD_P
 ClientSampleId :

Integration File signal 1: autoint1.e
 Integration File signal 2: autoint2.e
 Quant Time: Jun 03 02:15:26 2022
 Quant Method : Z:\pestpcbsrv\HPCHEM1\ECD_P\methods\PP052722.M
 Quant Title : GC EXTRACTABLES
 QLast Update : Fri May 27 23:53:39 2022
 Response via : Initial Calibration
 Integrator: ChemStation

Volume Inj. : 2 µl
 Signal #1 Phase : ZB-MR1 Signal #2 Phase: ZB-MR2
 Signal #1 Info : 30Mx0.32mmx 0.50µ Signal #2 Info : 30M x 0.32mm x 0.25µm

Compound	RT#1	RT#2	Resp#1	Resp#2	ng/ml	ng/ml
System Monitoring Compounds						
1) SA Tetrachlo...	4.034	3.214	54932348	43197465	23.458	21.919
2) SA Decachlor...	10.384	8.644	36100286	30204572	18.574	18.685
Target Compounds						
3) L1 AR-1016-1	5.301f	4.398	24794	224088	0.294	3.332 #
4) L1 AR-1016-2	5.355	4.398	1059917	224088	8.958	2.406 #
5) L1 AR-1016-3	5.418	0.000	1406844	0	20.819	N.D. #
6) L1 AR-1016-4	5.527	4.630	1011538	272381	16.410	7.149 #
7) L1 AR-1016-5	5.853	0.000	3201608	0	56.838	N.D. #
8) L2 AR-1221-1	4.270	0.000	6796458	0	257.088	N.D. #
9) L2 AR-1221-2	4.367	3.564f	769659	14341	37.579	0.934 #
10) L2 AR-1221-3	4.447	0.000	149502	0	2.388	N.D. #
11) L3 AR-1232-1	4.447	0.000	149502	0	2.878	N.D. #
12) L3 AR-1232-2	5.024	4.398	669710	224088	27.895	5.562 #
13) L3 AR-1232-3	5.355	0.000	1059917	0	21.360	N.D. #
14) L3 AR-1232-4	5.527	4.675	1011538	274933	42.315	15.842 #
15) L3 AR-1232-5	5.623	0.000	1813933	0	111.030	N.D. #
16) L4 AR-1242-1	5.301f	4.398	24794	224088	0.443	4.699 #
17) L4 AR-1242-2	5.355	4.398	1059917	224088	12.887	3.372 #
18) L4 AR-1242-3	5.418	0.000	1406844	0	28.659	N.D. #
19) L4 AR-1242-4	5.527	4.675	1011538	274933	25.562	8.560 #
20) L4 AR-1242-5	6.341	5.238	10793020	3258856	253.421	78.034 #
21) L5 AR-1248-1	5.301f	4.398	24794	224088	0.575	6.123 #
22) L5 AR-1248-2	5.623	4.630	1813933	272381	31.718	5.719 #
23) L5 AR-1248-3	5.853	4.675	3201608	274933	47.302	5.550 #
24) L5 AR-1248-4	6.269f	0.000	25646492	0	329.779	N.D. #
25) L5 AR-1248-5	6.341	5.318f	10793020	1807675	141.889	29.970 #
26) L6 AR-1254-1	6.269	5.238	25646492	3258856	353.277	37.174 #
27) L6 AR-1254-2	6.500	5.399	15238350	3762961	128.067	50.082 #
28) L6 AR-1254-3	6.929	5.852	11807006	4925502	99.391	40.144 #
29) L6 AR-1254-4	7.230	6.084	11290154	683986	125.169	9.109 #
30) L6 AR-1254-5	7.695	6.538f	16482877	10643682	177.877	105.137 #
31) L7 AR-1260-1	7.091	5.976	13189052	6384770	141.307	74.585 #
32) L7 AR-1260-2	7.379	6.183	19809888	12548919	177.213	121.743 #
33) L7 AR-1260-3	7.776	6.350	14438215	5370341	168.559	54.234 #
34) L7 AR-1260-4	8.028	6.865	13710809	5512633	132.144	66.217 #
35) L7 AR-1260-5	8.390	7.130	18324050	16049900	88.798	80.892
36) L8 AR-1262-1	7.776	6.582f	14438215	9803408	126.596	90.737 #
37) L8 AR-1262-2	8.390	6.865f	18324050	5512633	85.968	55.703 #
38) L8 AR-1262-3	8.735	7.443f	2687615	10039128	28.839	133.402 #
39) L8 AR-1262-4	8.815f	7.509f	5618910	8380336	94.501	57.539 #
40) L8 AR-1262-5	9.567	8.053f	4716515	4591838	59.591	68.034
41) L9 AR-1268-1	8.735	7.443	2687615	10039128	10.160	42.985 #

Data Path : Z:\pestpcbsrv\HPCHEM1\ECD_P\Data\PP060222\
 Data File : PP048308.D
 Signal(s) : Signal #1: ECD1A.ch Signal #2: ECD2B.ch
 Acq On : 02 Jun 2022 10:43
 Operator : YP\AJ
 Sample : N2953-08
 Misc :
 ALS Vial : 9 Sample Multiplier: 1

Instrument :
 ECD_P
 ClientSampleId :

Integration File signal 1: autoint1.e
 Integration File signal 2: autoint2.e
 Quant Time: Jun 03 02:15:26 2022
 Quant Method : Z:\pestpcbsrv\HPCHEM1\ECD_P\methods\PP052722.M
 Quant Title : GC EXTRACTABLES
 QLast Update : Fri May 27 23:53:39 2022
 Response via : Initial Calibration
 Integrator: ChemStation

Volume Inj. : 2 µl
 Signal #1 Phase : ZB-MR1 Signal #2 Phase: ZB-MR2
 Signal #1 Info : 30Mx0.32mmx 0.50µ Signal #2 Info : 30M x 0.32mm x 0.25µm

	Compound	RT#1	RT#2	Resp#1	Resp#2	ng/ml	ng/ml
42)	L9 AR-1268-2	8.815f	7.509f	5618910	8380336	23.267	38.732 #
43)	L9 AR-1268-3	9.088	7.738f	825931	577462	4.017	3.107
44)	L9 AR-1268-4	9.567	8.053f	4716515	4591838	52.505	55.896
45)	L9 AR-1268-5	10.021	8.369f	1575322	943768	2.231	1.557 #

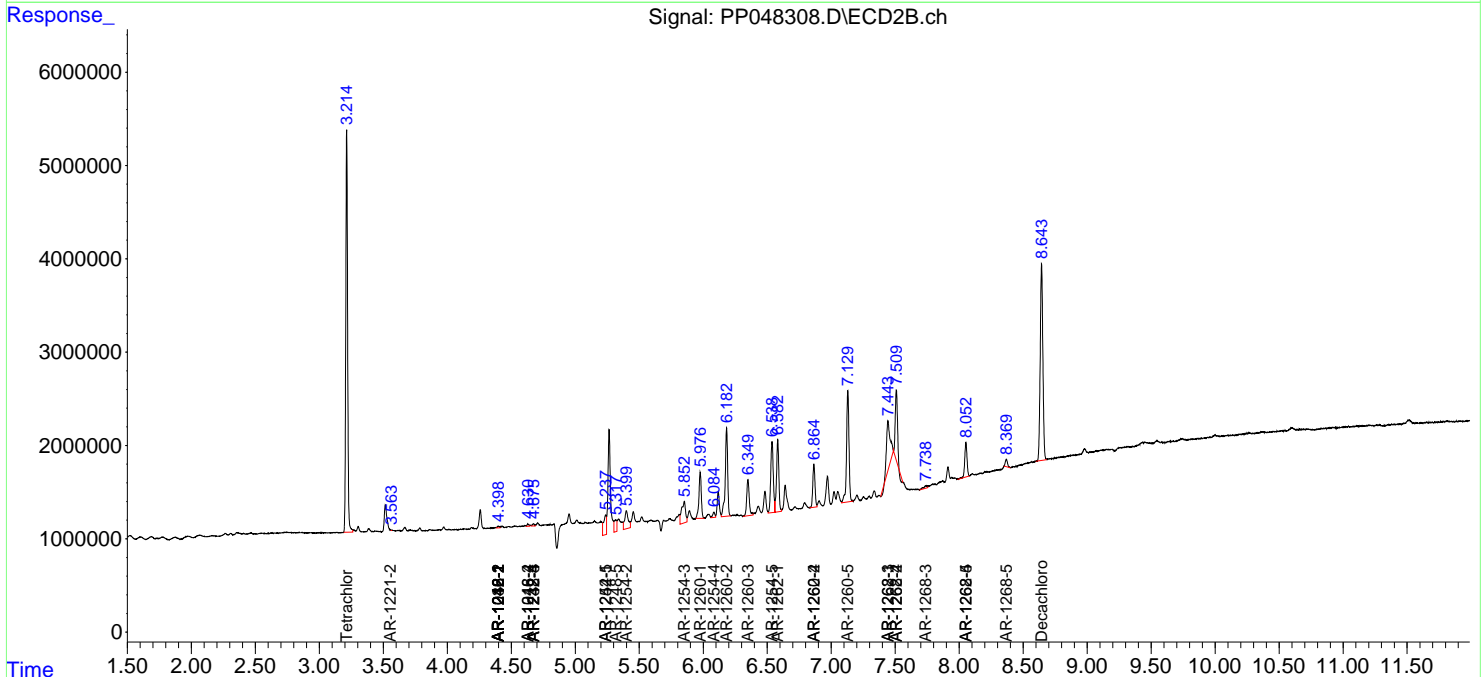
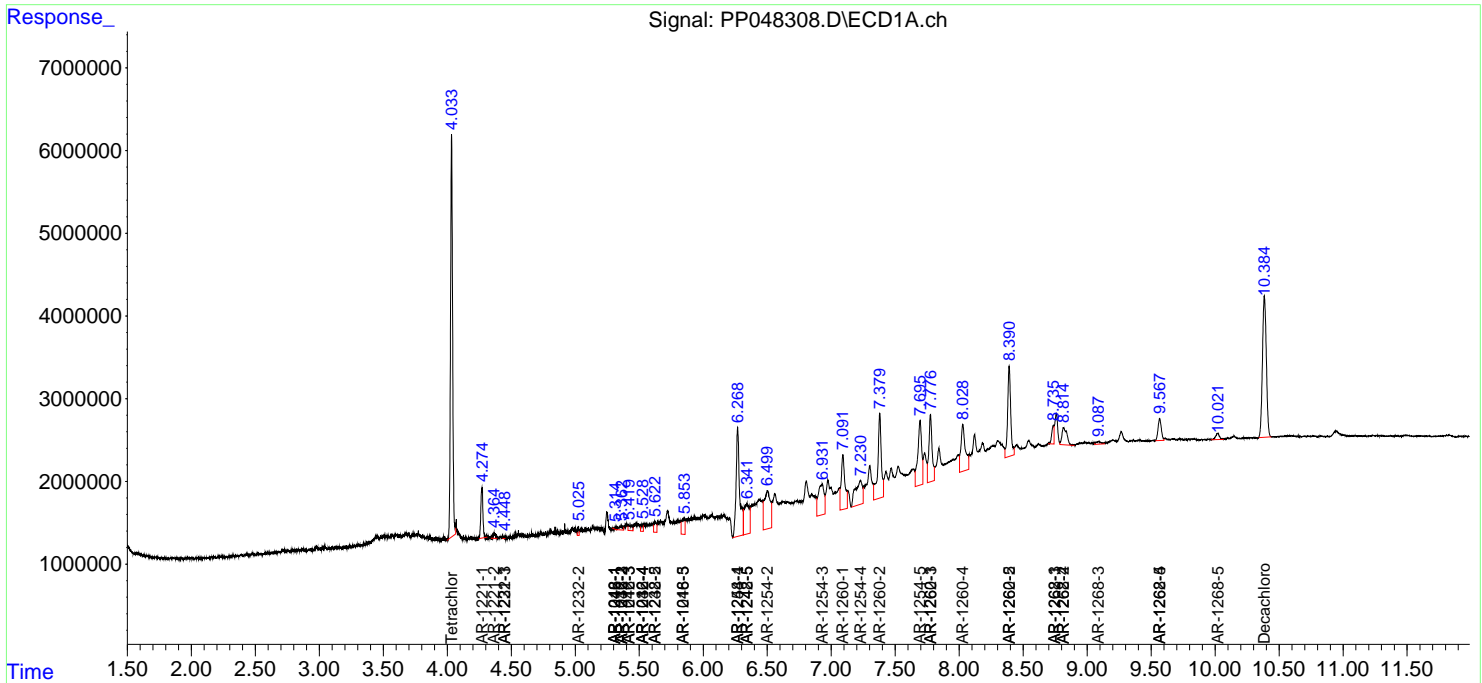
(f)=RT Delta > 1/2 Window (#)=Amounts differ by > 25% (m)=manual int.

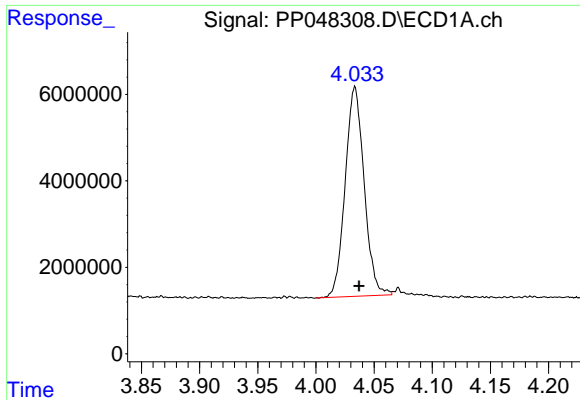
Data Path : Z:\pestpcbsrv\HPCHEM1\ECD_P\Data\PP060222\
 Data File : PP048308.D
 Signal(s) : Signal #1: ECD1A.ch Signal #2: ECD2B.ch
 Acq On : 02 Jun 2022 10:43
 Operator : YP\AJ
 Sample : N2953-08
 Misc :
 ALS Vial : 9 Sample Multiplier: 1

Instrument :
 ECD_P
 ClientSampleId :

Integration File signal 1: autoint1.e
 Integration File signal 2: autoint2.e
 Quant Time: Jun 03 02:15:26 2022
 Quant Method : Z:\pestpcbsrv\HPCHEM1\ECD_P\methods\PP052722.M
 Quant Title : GC EXTRACTABLES
 QLast Update : Fri May 27 23:53:39 2022
 Response via : Initial Calibration
 Integrator: ChemStation

Volume Inj. : 2 µl
 Signal #1 Phase : ZB-MR1 Signal #2 Phase: ZB-MR2
 Signal #1 Info : 30Mx0.32mmx 0.50µ Signal #2 Info : 30M x 0.32mm x 0.25µm

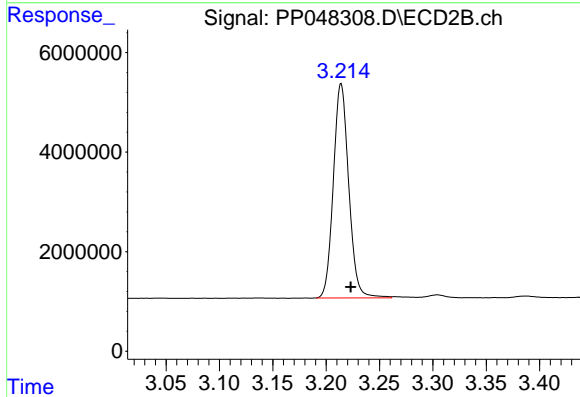




#1 Tetrachloro-m-xylene

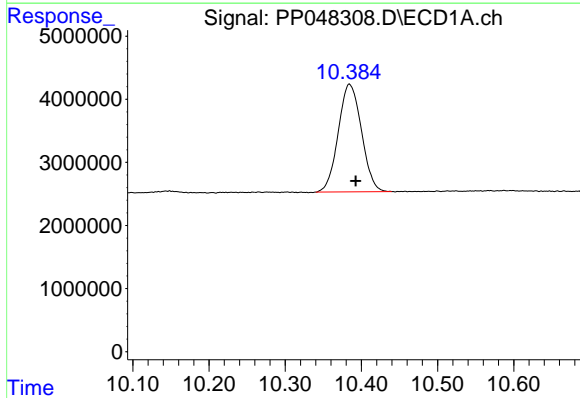
R.T.: 4.034 min
 Delta R.T.: -0.003 min
 Response: 54932348
 Conc: 23.46 ng/ml

Instrument :
 ECD_P
 ClientSampleId :



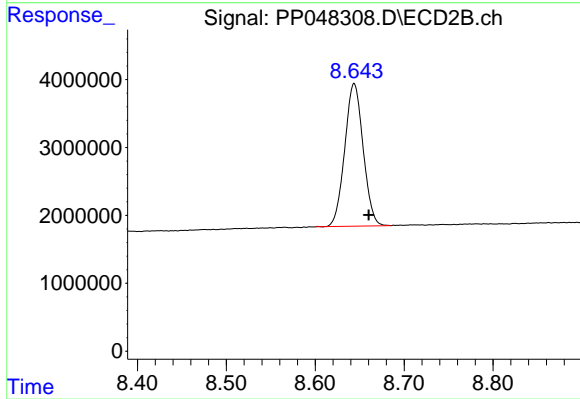
#1 Tetrachloro-m-xylene

R.T.: 3.214 min
 Delta R.T.: -0.009 min
 Response: 43197465
 Conc: 21.92 ng/ml



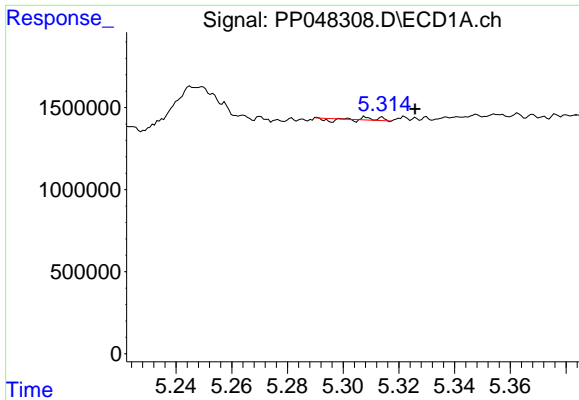
#2 Decachlorobiphenyl

R.T.: 10.384 min
 Delta R.T.: -0.008 min
 Response: 36100286
 Conc: 18.57 ng/ml



#2 Decachlorobiphenyl

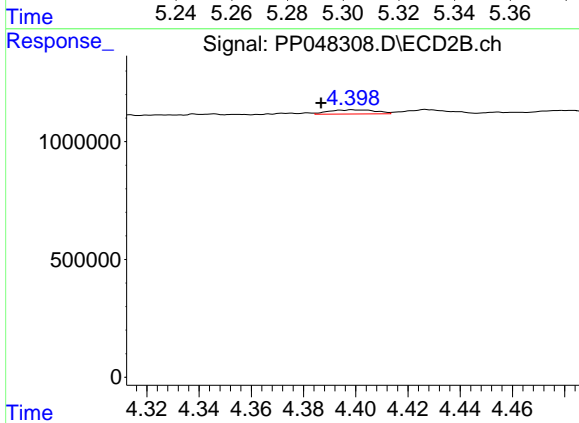
R.T.: 8.644 min
 Delta R.T.: -0.016 min
 Response: 30204572
 Conc: 18.69 ng/ml



#3 AR-1016-1

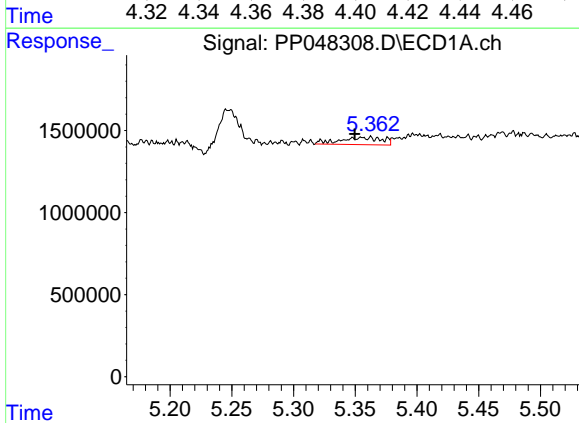
R.T.: 5.301 min
 Delta R.T.: -0.025 min
 Response: 24794
 Conc: 0.29 ng/ml

Instrument :
 ECD_P
 ClientSampleId :



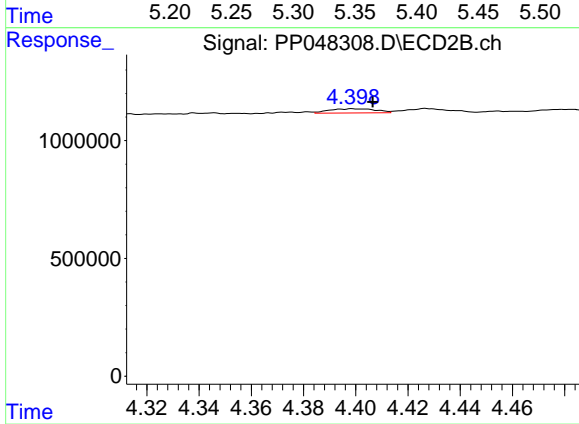
#3 AR-1016-1

R.T.: 4.398 min
 Delta R.T.: 0.012 min
 Response: 224088
 Conc: 3.33 ng/ml



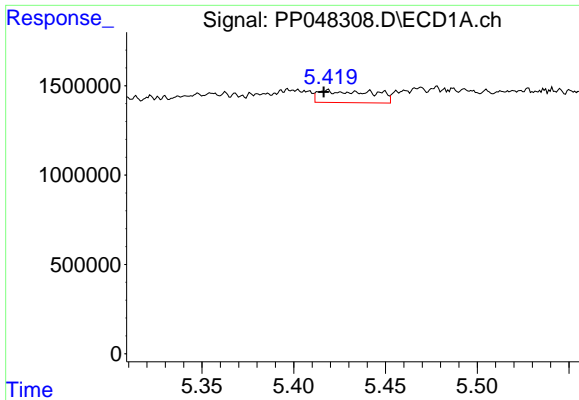
#4 AR-1016-2

R.T.: 5.355 min
 Delta R.T.: 0.006 min
 Response: 1059917
 Conc: 8.96 ng/ml



#4 AR-1016-2

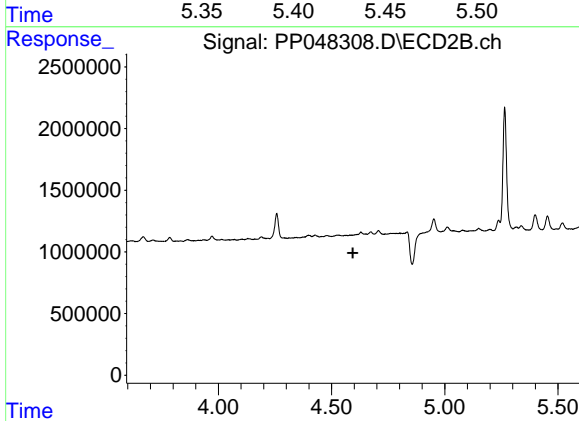
R.T.: 4.398 min
 Delta R.T.: -0.008 min
 Response: 224088
 Conc: 2.41 ng/ml



#5 AR-1016-3

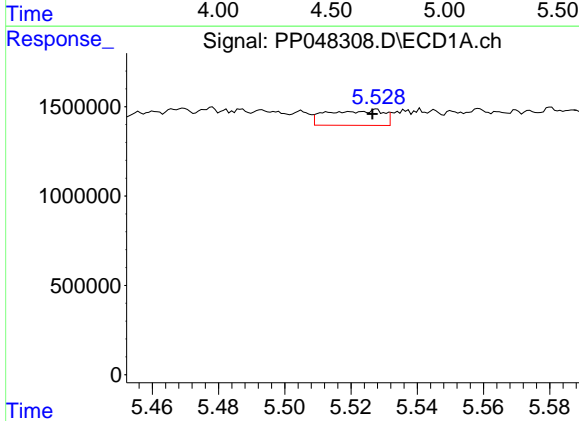
R.T.: 5.418 min
 Delta R.T.: 0.002 min
 Response: 1406844
 Conc: 20.82 ng/ml

Instrument :
 ECD_P
 ClientSampleId :



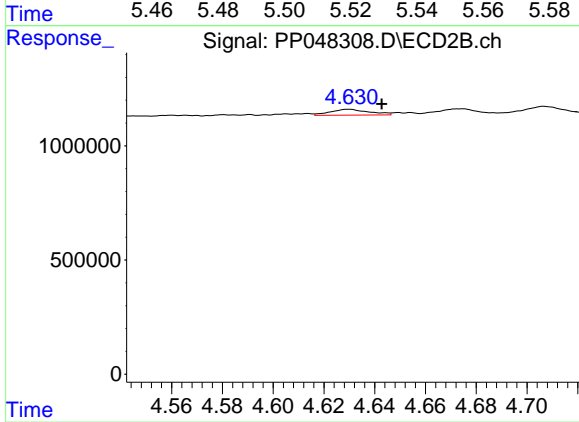
#5 AR-1016-3

R.T.: 0.000 min
 Exp R.T. : 4.594 min
 Response: 0
 Conc: N.D.



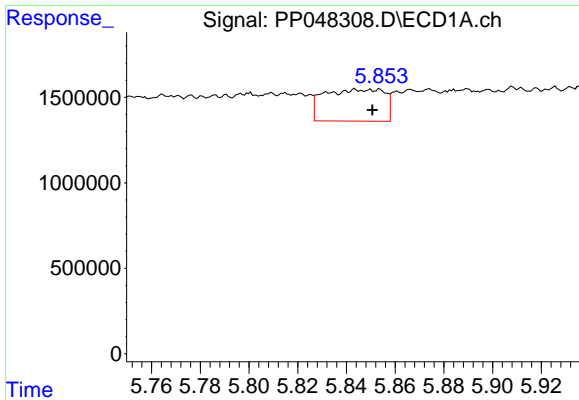
#6 AR-1016-4

R.T.: 5.527 min
 Delta R.T.: 0.001 min
 Response: 1011538
 Conc: 16.41 ng/ml



#6 AR-1016-4

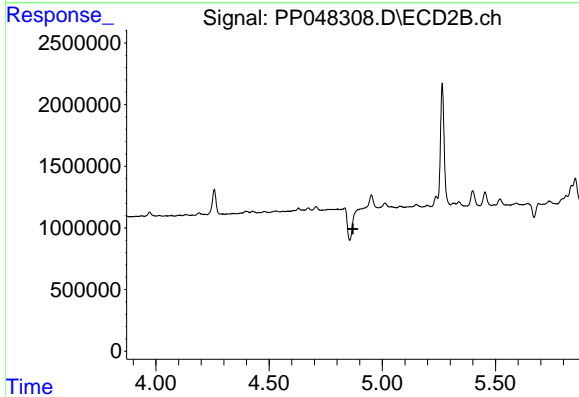
R.T.: 4.630 min
 Delta R.T.: -0.013 min
 Response: 272381
 Conc: 7.15 ng/ml



#7 AR-1016-5

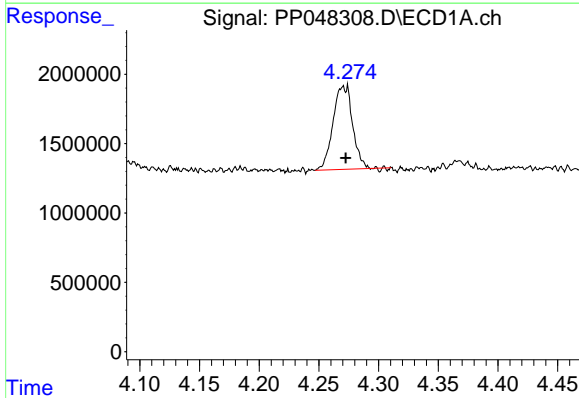
R.T.: 5.853 min
 Delta R.T.: 0.002 min
 Response: 3201608
 Conc: 56.84 ng/ml

Instrument :
 ECD_P
 ClientSampleId :



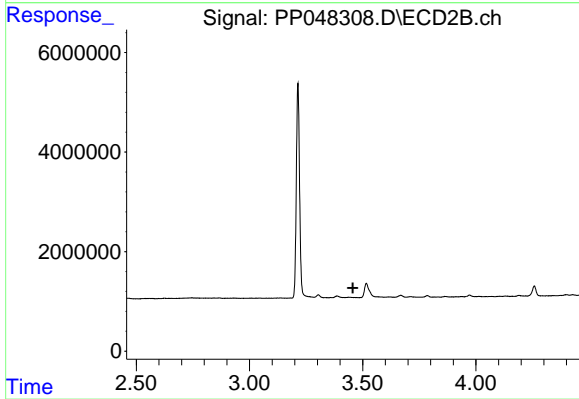
#7 AR-1016-5

R.T.: 0.000 min
 Exp R.T. : 4.870 min
 Response: 0
 Conc: N.D.



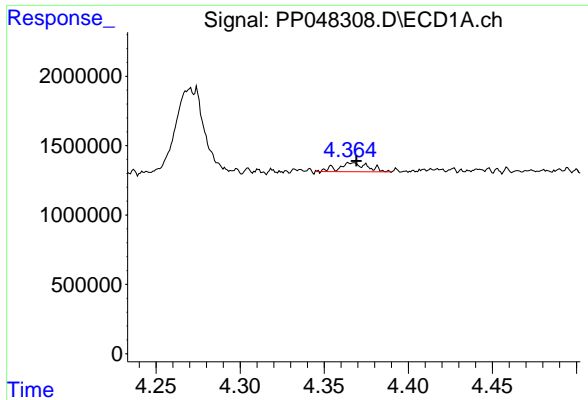
#8 AR-1221-1

R.T.: 4.270 min
 Delta R.T.: -0.002 min
 Response: 6796458
 Conc: 257.09 ng/ml



#8 AR-1221-1

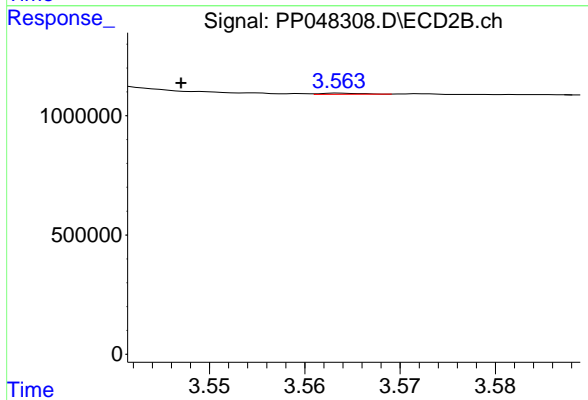
R.T.: 0.000 min
 Exp R.T. : 3.457 min
 Response: 0
 Conc: N.D.



#9 AR-1221-2

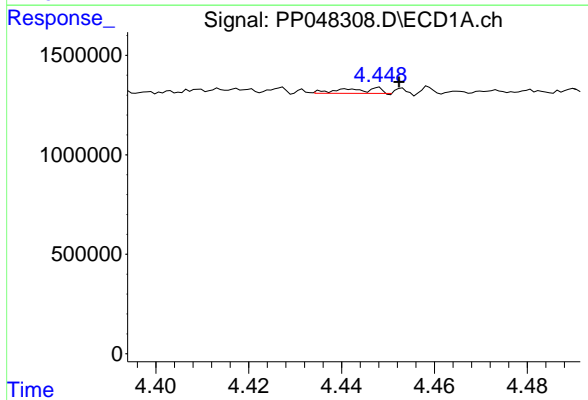
R.T.: 4.367 min
 Delta R.T.: -0.002 min
 Response: 769659
 Conc: 37.58 ng/ml

Instrument :
 ECD_P
 ClientSampleId :



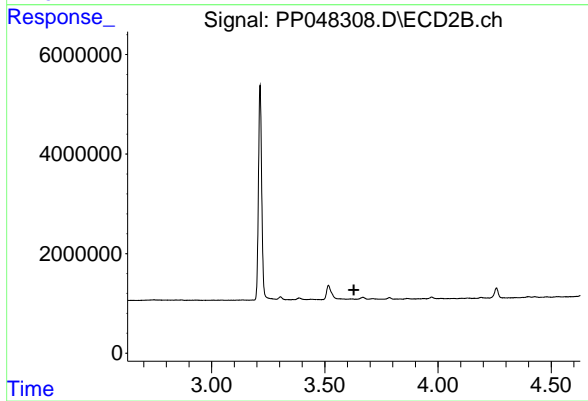
#9 AR-1221-2

R.T.: 3.564 min
 Delta R.T.: 0.017 min
 Response: 14341
 Conc: 0.93 ng/ml



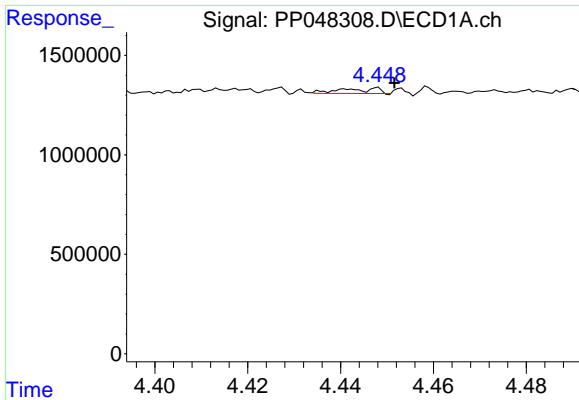
#10 AR-1221-3

R.T.: 4.447 min
 Delta R.T.: -0.005 min
 Response: 149502
 Conc: 2.39 ng/ml



#10 AR-1221-3

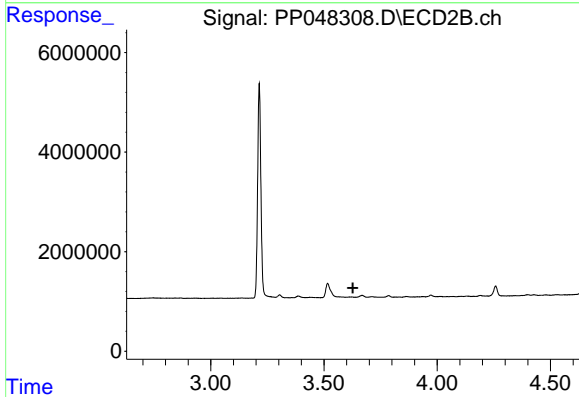
R.T.: 0.000 min
 Exp R.T. : 3.628 min
 Response: 0
 Conc: N.D.



#11 AR-1232-1

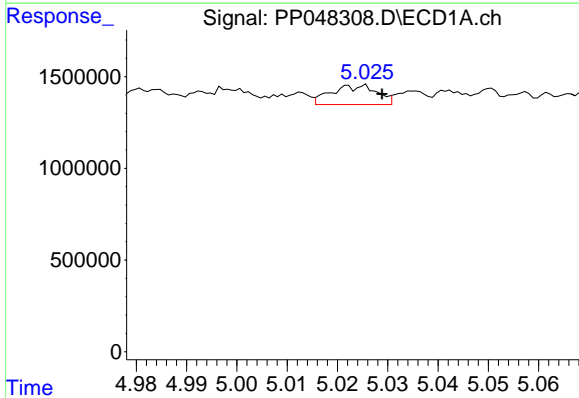
R.T.: 4.447 min
 Delta R.T.: -0.004 min
 Response: 149502
 Conc: 2.88 ng/ml

Instrument :
 ECD_P
 ClientSampleId :



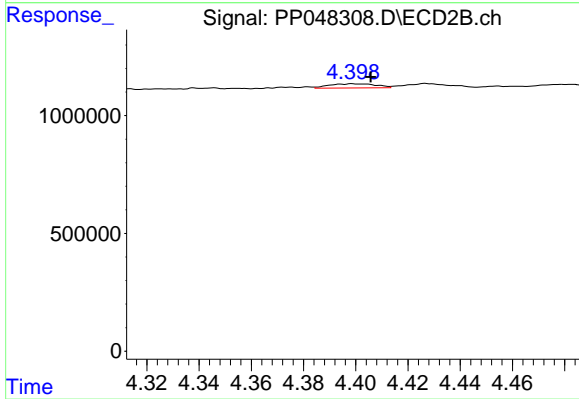
#11 AR-1232-1

R.T.: 0.000 min
 Exp R.T. : 3.627 min
 Response: 0
 Conc: N.D.



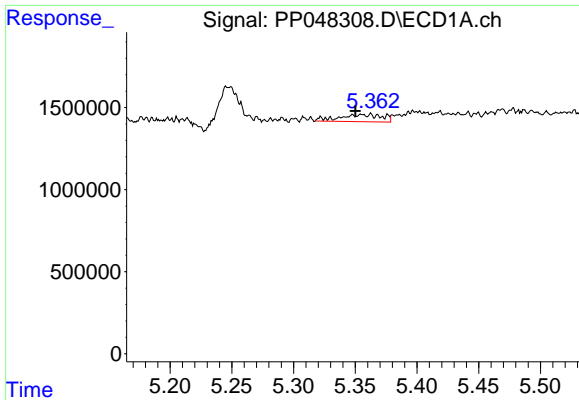
#12 AR-1232-2

R.T.: 5.024 min
 Delta R.T.: -0.005 min
 Response: 669710
 Conc: 27.90 ng/ml



#12 AR-1232-2

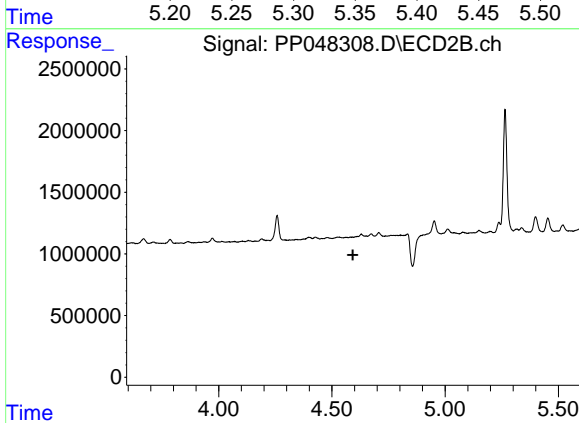
R.T.: 4.398 min
 Delta R.T.: -0.007 min
 Response: 224088
 Conc: 5.56 ng/ml



#13 AR-1232-3

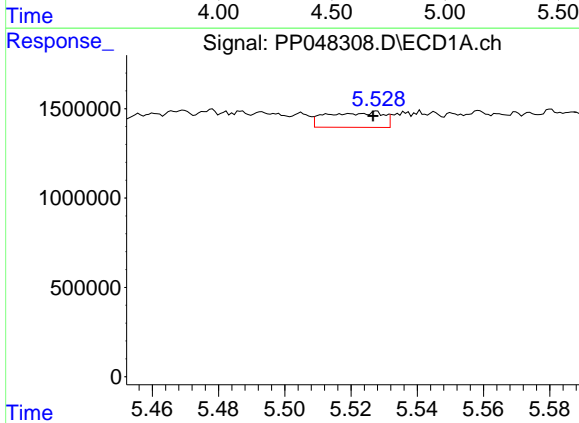
R.T.: 5.355 min
 Delta R.T.: 0.005 min
 Response: 1059917
 Conc: 21.36 ng/ml

Instrument :
 ECD_P
 ClientSampleId :



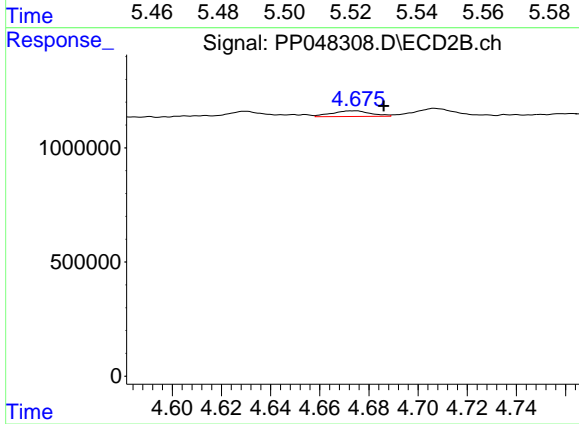
#13 AR-1232-3

R.T.: 0.000 min
 Exp R.T. : 4.593 min
 Response: 0
 Conc: N.D.



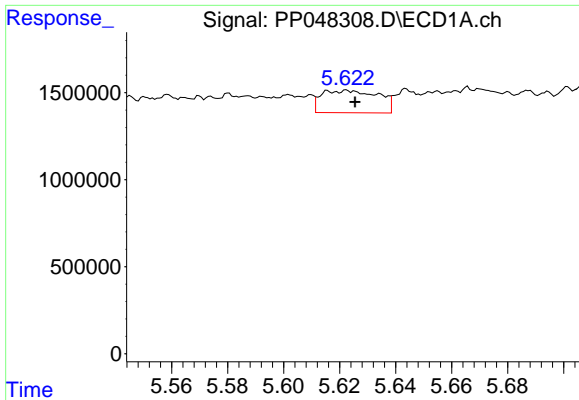
#14 AR-1232-4

R.T.: 5.527 min
 Delta R.T.: 0.000 min
 Response: 1011538
 Conc: 42.32 ng/ml



#14 AR-1232-4

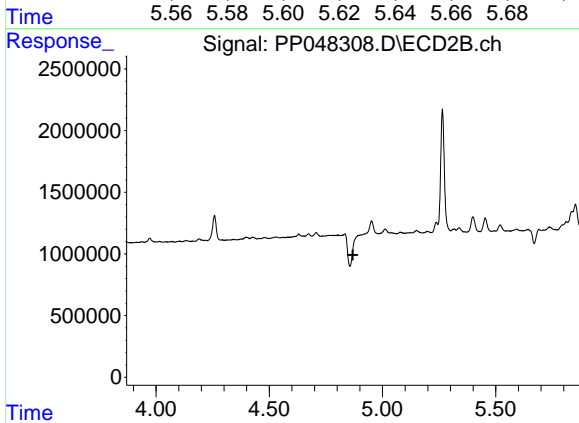
R.T.: 4.675 min
 Delta R.T.: -0.011 min
 Response: 274933
 Conc: 15.84 ng/ml



#15 AR-1232-5

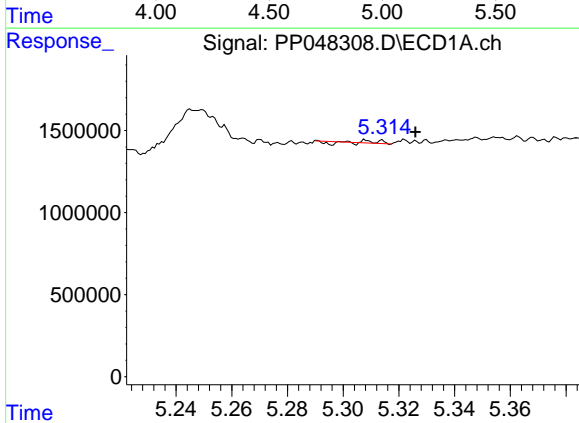
R.T.: 5.623 min
 Delta R.T.: -0.002 min
 Response: 1813933
 Conc: 111.03 ng/ml

Instrument :
 ECD_P
 ClientSampleId :



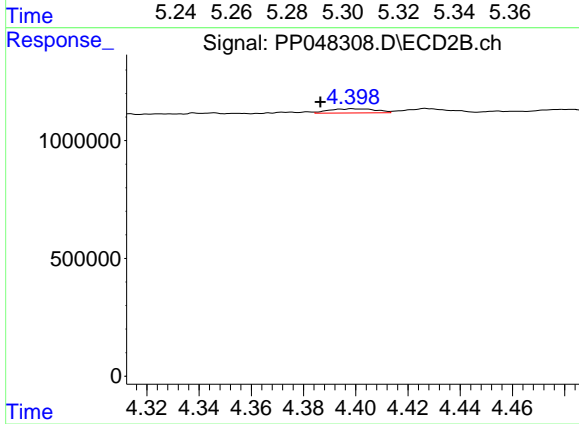
#15 AR-1232-5

R.T.: 0.000 min
 Exp R.T. : 4.869 min
 Response: 0
 Conc: N.D.



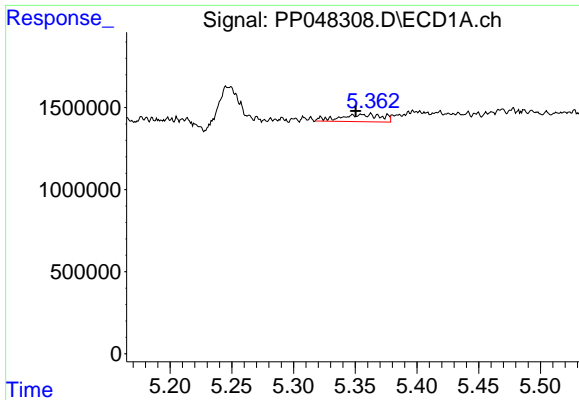
#16 AR-1242-1

R.T.: 5.301 min
 Delta R.T.: -0.025 min
 Response: 24794
 Conc: 0.44 ng/ml



#16 AR-1242-1

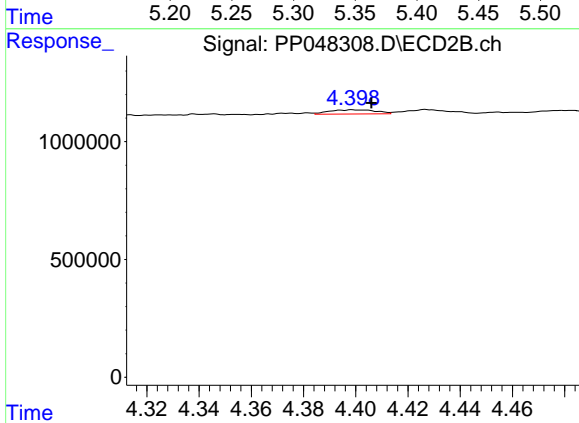
R.T.: 4.398 min
 Delta R.T.: 0.012 min
 Response: 224088
 Conc: 4.70 ng/ml



#17 AR-1242-2

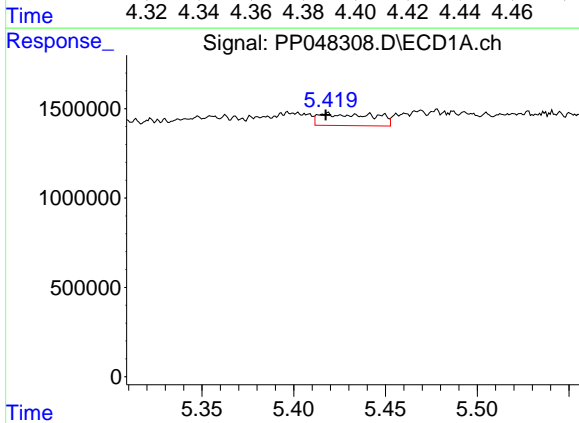
R.T.: 5.355 min
 Delta R.T.: 0.005 min
 Response: 1059917
 Conc: 12.89 ng/ml

Instrument :
 ECD_P
 ClientSampleId :



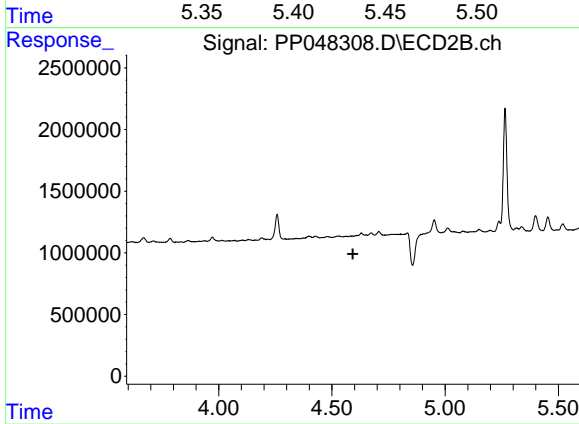
#17 AR-1242-2

R.T.: 4.398 min
 Delta R.T.: -0.008 min
 Response: 224088
 Conc: 3.37 ng/ml



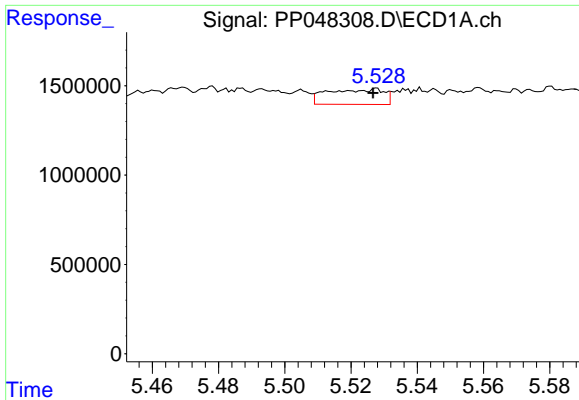
#18 AR-1242-3

R.T.: 5.418 min
 Delta R.T.: 0.000 min
 Response: 1406844
 Conc: 28.66 ng/ml



#18 AR-1242-3

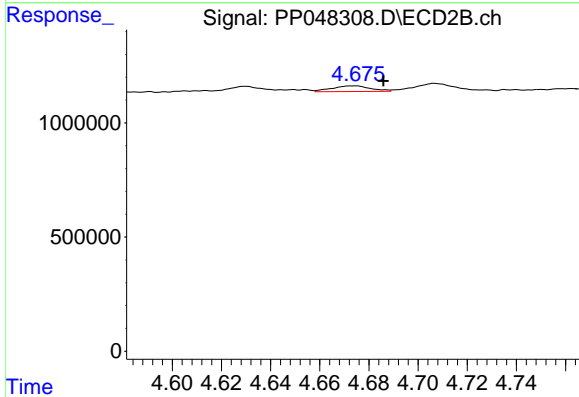
R.T.: 0.000 min
 Exp R.T. : 4.593 min
 Response: 0
 Conc: N.D.



#19 AR-1242-4

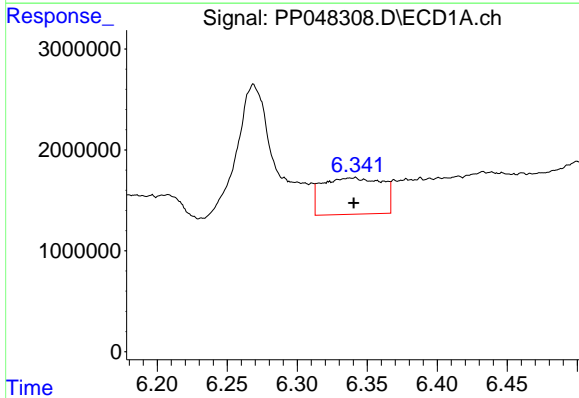
R.T.: 5.527 min
 Delta R.T.: 0.000 min
 Response: 1011538
 Conc: 25.56 ng/ml

Instrument :
 ECD_P
 ClientSampleId :



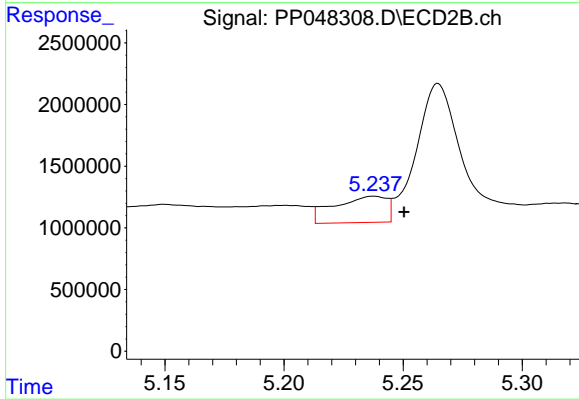
#19 AR-1242-4

R.T.: 4.675 min
 Delta R.T.: -0.011 min
 Response: 274933
 Conc: 8.56 ng/ml



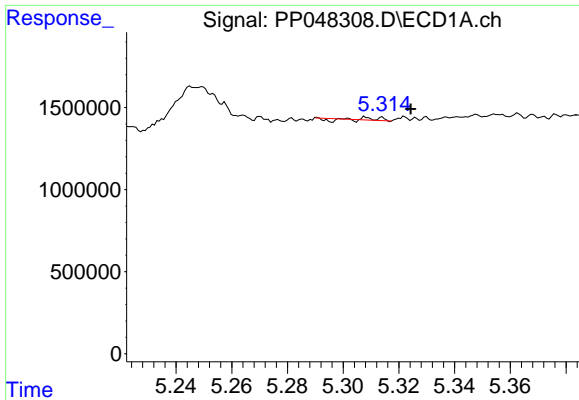
#20 AR-1242-5

R.T.: 6.341 min
 Delta R.T.: 0.000 min
 Response: 10793020
 Conc: 253.42 ng/ml



#20 AR-1242-5

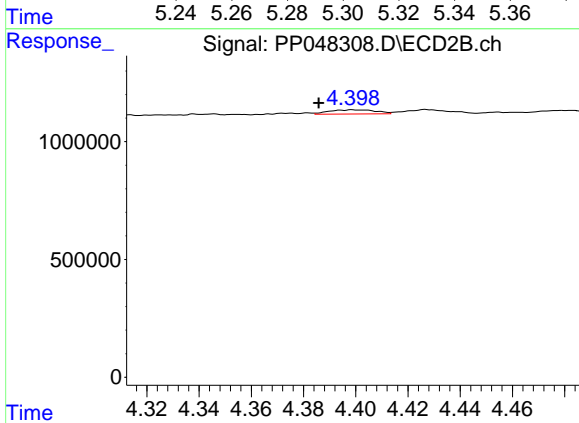
R.T.: 5.238 min
 Delta R.T.: -0.013 min
 Response: 3258856
 Conc: 78.03 ng/ml



#21 AR-1248-1

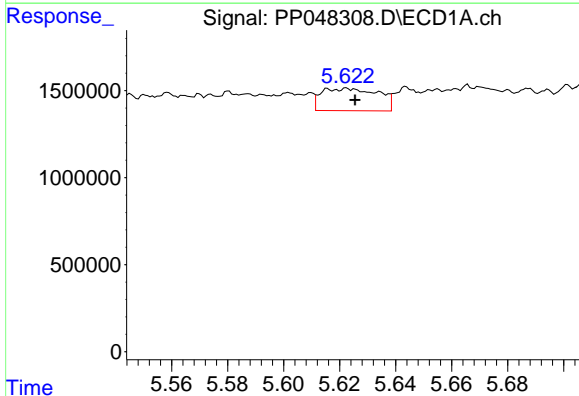
R.T.: 5.301 min
 Delta R.T.: -0.024 min
 Response: 24794
 Conc: 0.57 ng/ml

Instrument :
 ECD_P
 ClientSampleId :



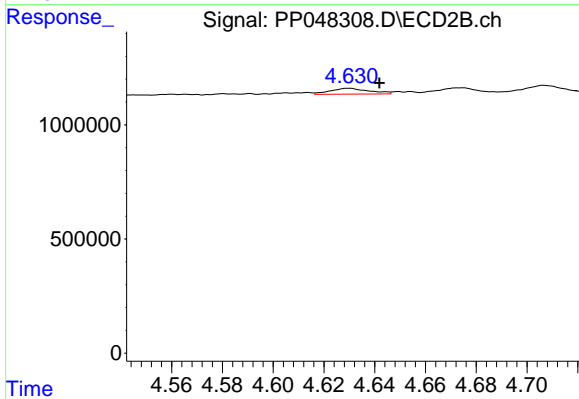
#21 AR-1248-1

R.T.: 4.398 min
 Delta R.T.: 0.013 min
 Response: 224088
 Conc: 6.12 ng/ml



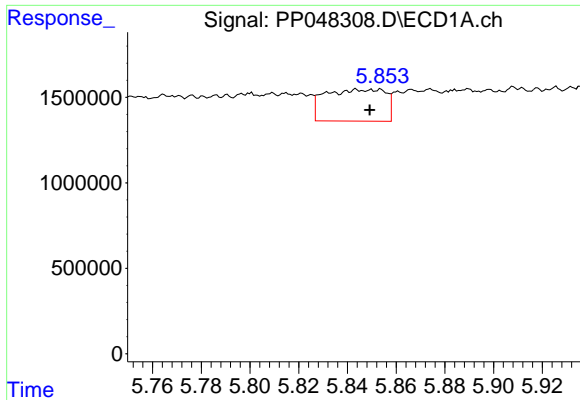
#22 AR-1248-2

R.T.: 5.623 min
 Delta R.T.: -0.002 min
 Response: 1813933
 Conc: 31.72 ng/ml



#22 AR-1248-2

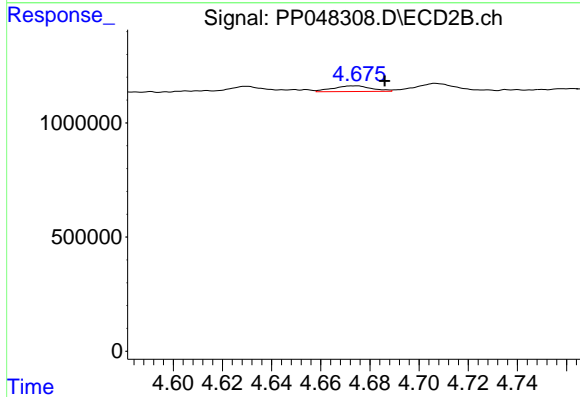
R.T.: 4.630 min
 Delta R.T.: -0.012 min
 Response: 272381
 Conc: 5.72 ng/ml



#23 AR-1248-3

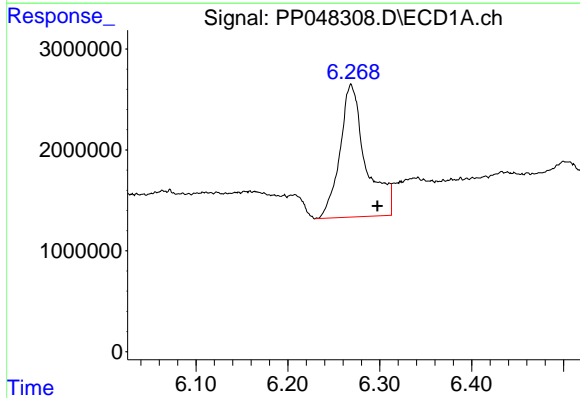
R.T.: 5.853 min
 Delta R.T.: 0.004 min
 Response: 3201608
 Conc: 47.30 ng/ml

Instrument :
 ECD_P
 ClientSampleId :



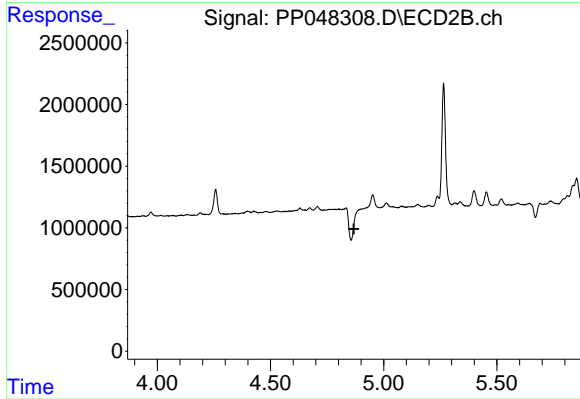
#23 AR-1248-3

R.T.: 4.675 min
 Delta R.T.: -0.011 min
 Response: 274933
 Conc: 5.55 ng/ml



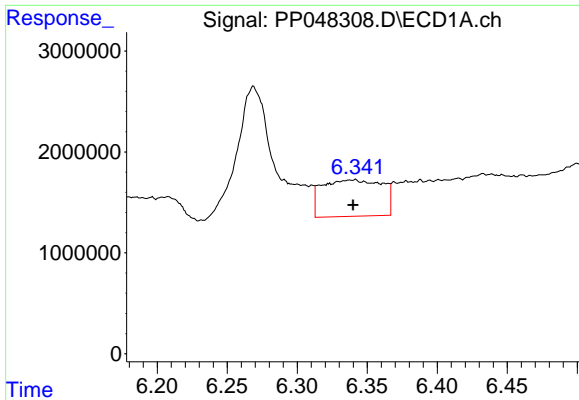
#24 AR-1248-4

R.T.: 6.269 min
 Delta R.T.: -0.029 min
 Response: 25646492
 Conc: 329.78 ng/ml



#24 AR-1248-4

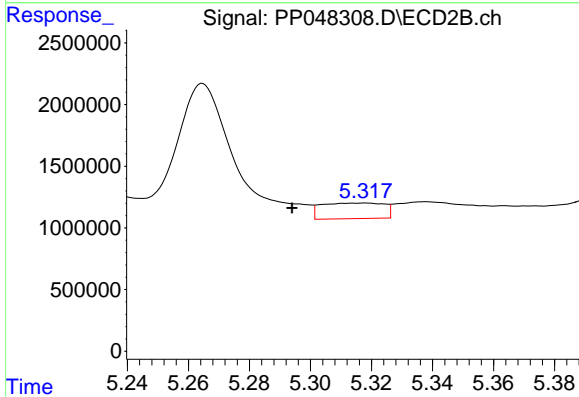
R.T.: 0.000 min
 Exp R.T. : 4.869 min
 Response: 0
 Conc: N.D.



#25 AR-1248-5

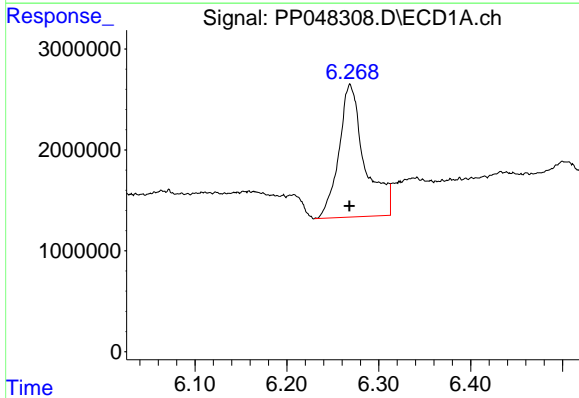
R.T.: 6.341 min
 Delta R.T.: 0.001 min
 Response: 10793020
 Conc: 141.89 ng/ml

Instrument :
 ECD_P
 ClientSampleId :



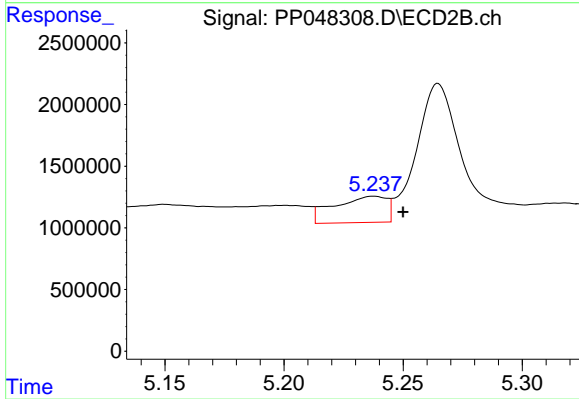
#25 AR-1248-5

R.T.: 5.318 min
 Delta R.T.: 0.024 min
 Response: 1807675
 Conc: 29.97 ng/ml



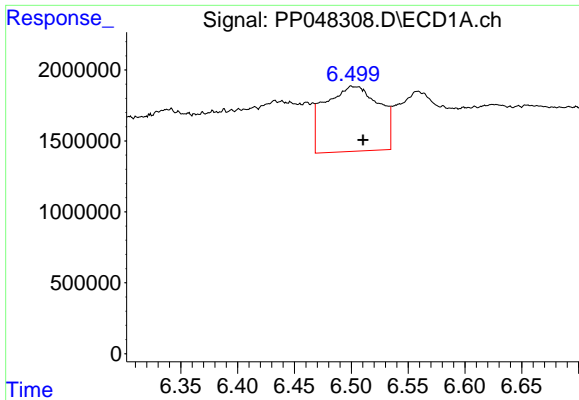
#26 AR-1254-1

R.T.: 6.269 min
 Delta R.T.: 0.000 min
 Response: 25646492
 Conc: 353.28 ng/ml



#26 AR-1254-1

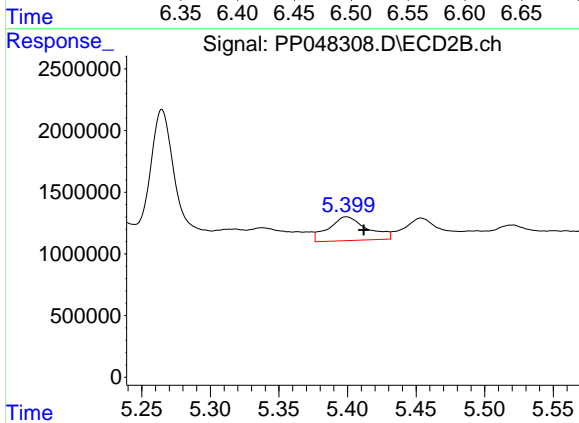
R.T.: 5.238 min
 Delta R.T.: -0.012 min
 Response: 3258856
 Conc: 37.17 ng/ml



#27 AR-1254-2

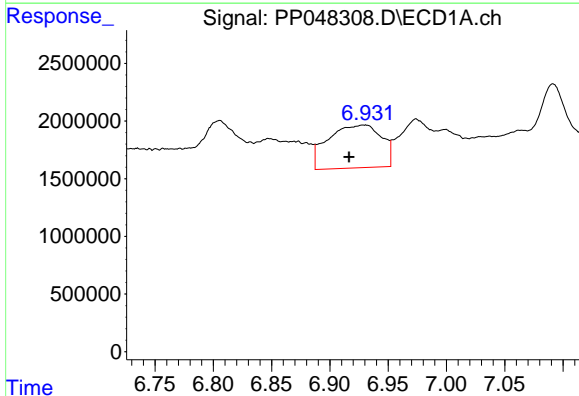
R.T.: 6.500 min
 Delta R.T.: -0.010 min
 Response: 15238350
 Conc: 128.07 ng/ml

Instrument :
 ECD_P
 ClientSampleId :



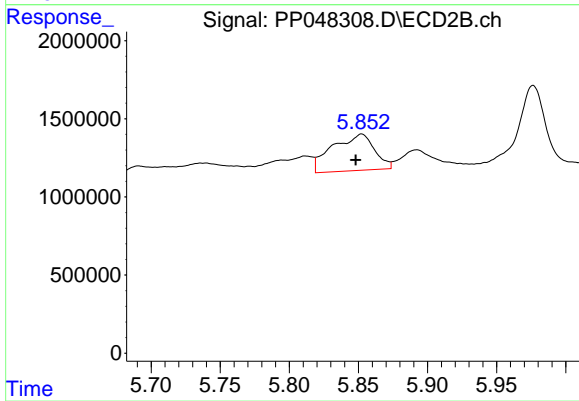
#27 AR-1254-2

R.T.: 5.399 min
 Delta R.T.: -0.013 min
 Response: 3762961
 Conc: 50.08 ng/ml



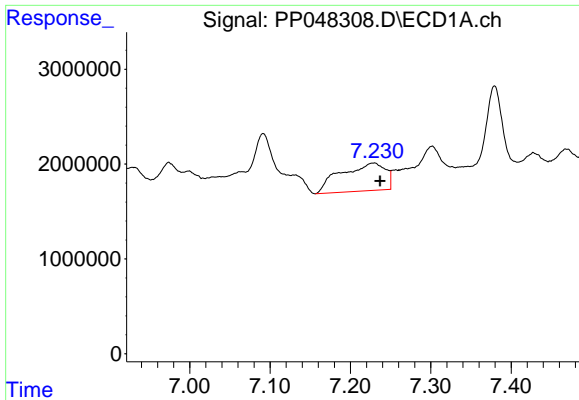
#28 AR-1254-3

R.T.: 6.929 min
 Delta R.T.: 0.013 min
 Response: 11807006
 Conc: 99.39 ng/ml



#28 AR-1254-3

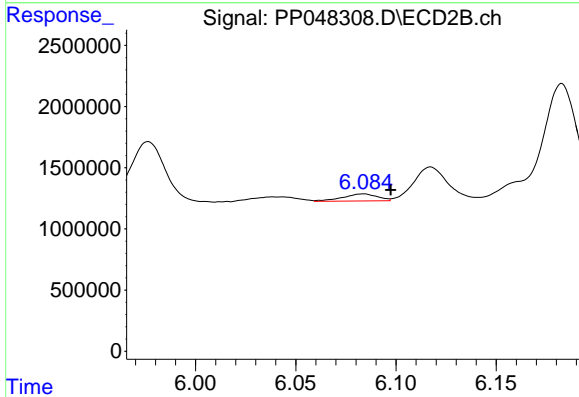
R.T.: 5.852 min
 Delta R.T.: 0.004 min
 Response: 4925502
 Conc: 40.14 ng/ml



#29 AR-1254-4

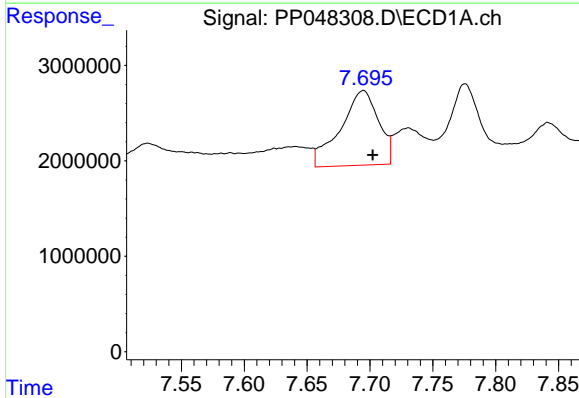
R.T.: 7.230 min
 Delta R.T.: -0.007 min
 Response: 11290154
 Conc: 125.17 ng/ml

Instrument :
 ECD_P
 ClientSampleId :



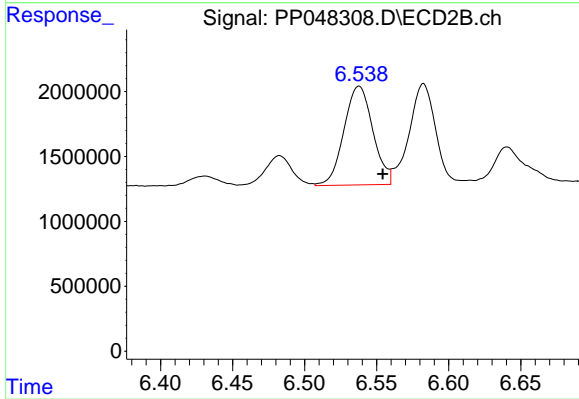
#29 AR-1254-4

R.T.: 6.084 min
 Delta R.T.: -0.013 min
 Response: 683986
 Conc: 9.11 ng/ml



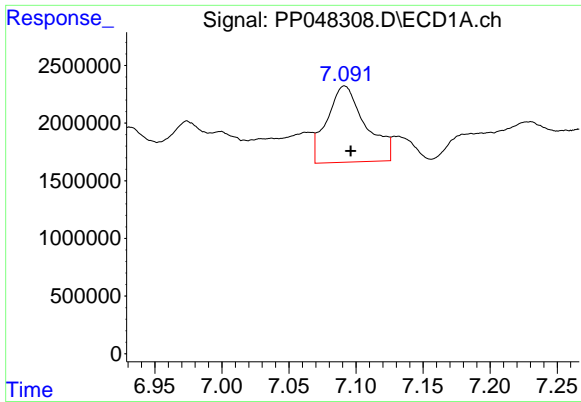
#30 AR-1254-5

R.T.: 7.695 min
 Delta R.T.: -0.008 min
 Response: 16482877
 Conc: 177.88 ng/ml



#30 AR-1254-5

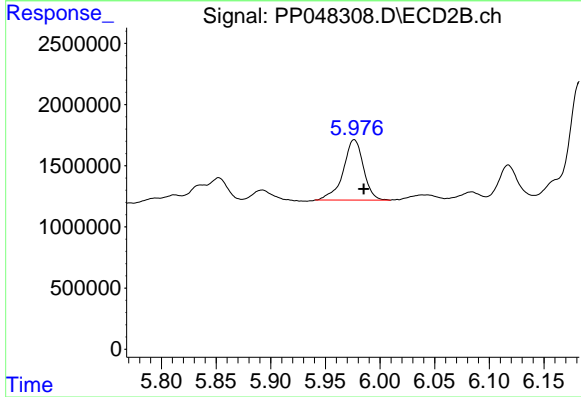
R.T.: 6.538 min
 Delta R.T.: -0.016 min
 Response: 10643682
 Conc: 105.14 ng/ml



#31 AR-1260-1

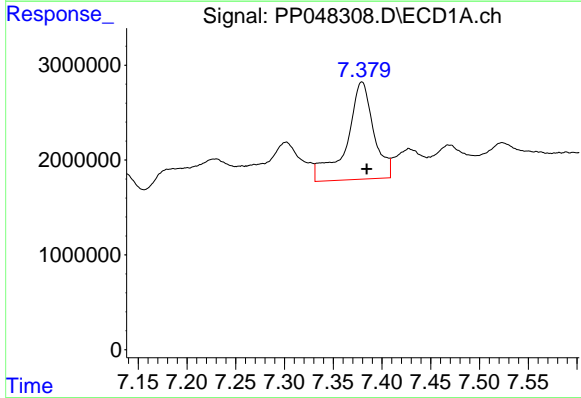
R.T.: 7.091 min
 Delta R.T.: -0.005 min
 Response: 13189052
 Conc: 141.31 ng/ml

Instrument :
 ECD_P
 ClientSampleId :



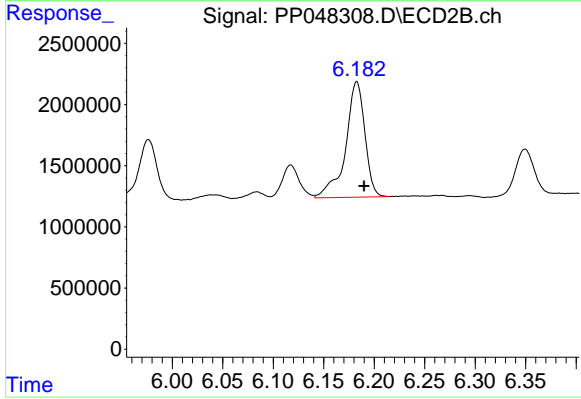
#31 AR-1260-1

R.T.: 5.976 min
 Delta R.T.: -0.009 min
 Response: 6384770
 Conc: 74.59 ng/ml



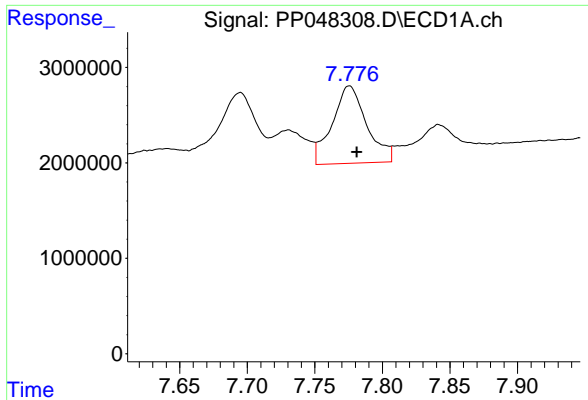
#32 AR-1260-2

R.T.: 7.379 min
 Delta R.T.: -0.005 min
 Response: 19809888
 Conc: 177.21 ng/ml



#32 AR-1260-2

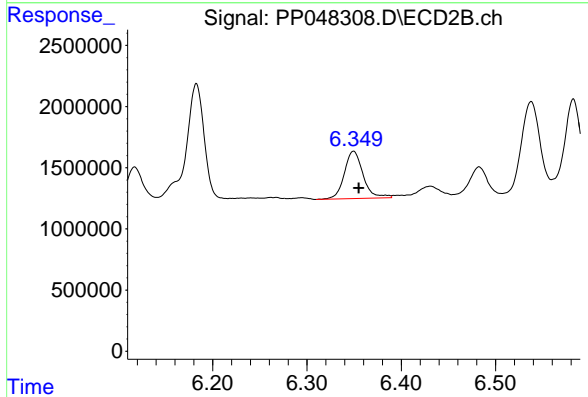
R.T.: 6.183 min
 Delta R.T.: -0.007 min
 Response: 12548919
 Conc: 121.74 ng/ml



#33 AR-1260-3

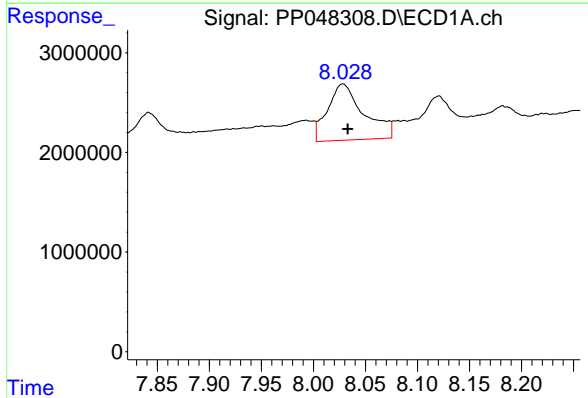
R.T.: 7.776 min
 Delta R.T.: -0.005 min
 Response: 14438215
 Conc: 168.56 ng/ml

Instrument :
 ECD_P
 ClientSampleId :



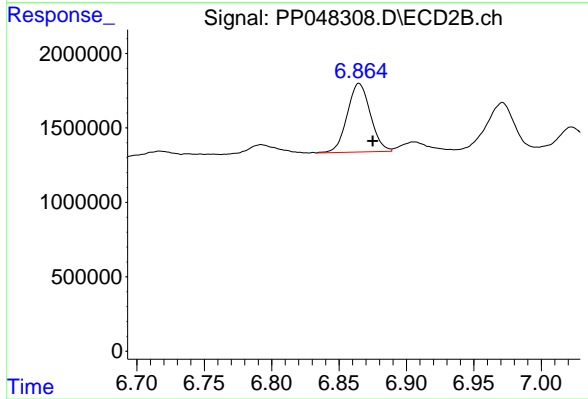
#33 AR-1260-3

R.T.: 6.350 min
 Delta R.T.: -0.005 min
 Response: 5370341
 Conc: 54.23 ng/ml



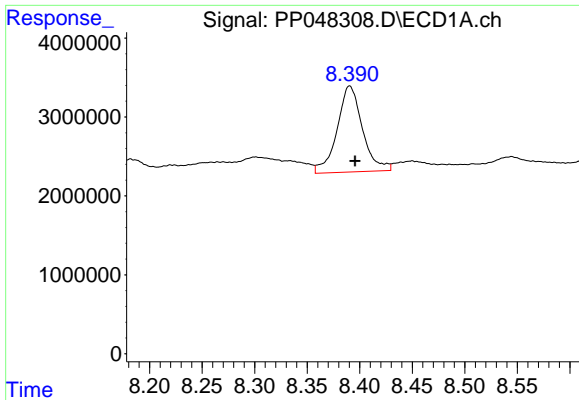
#34 AR-1260-4

R.T.: 8.028 min
 Delta R.T.: -0.005 min
 Response: 13710809
 Conc: 132.14 ng/ml



#34 AR-1260-4

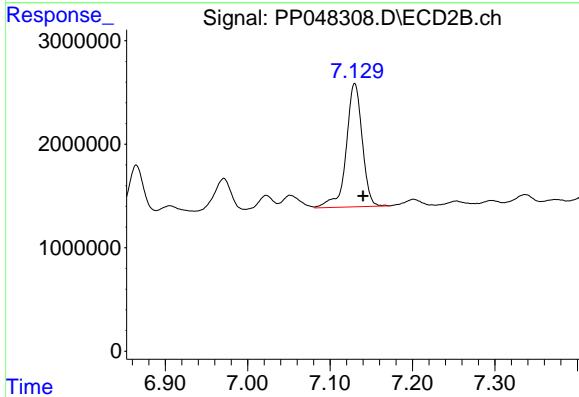
R.T.: 6.865 min
 Delta R.T.: -0.010 min
 Response: 5512633
 Conc: 66.22 ng/ml



#35 AR-1260-5

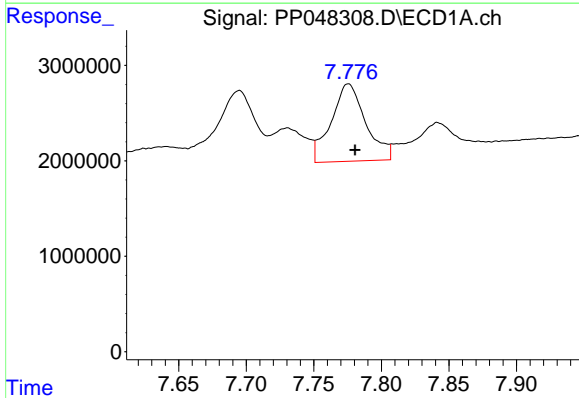
R.T.: 8.390 min
 Delta R.T.: -0.005 min
 Response: 18324050
 Conc: 88.80 ng/ml

Instrument :
 ECD_P
 ClientSampleId :



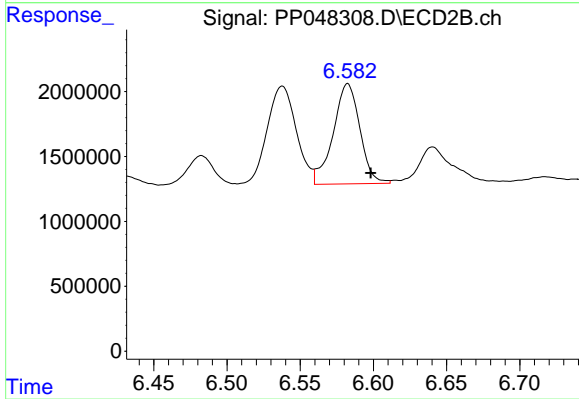
#35 AR-1260-5

R.T.: 7.130 min
 Delta R.T.: -0.010 min
 Response: 16049900
 Conc: 80.89 ng/ml



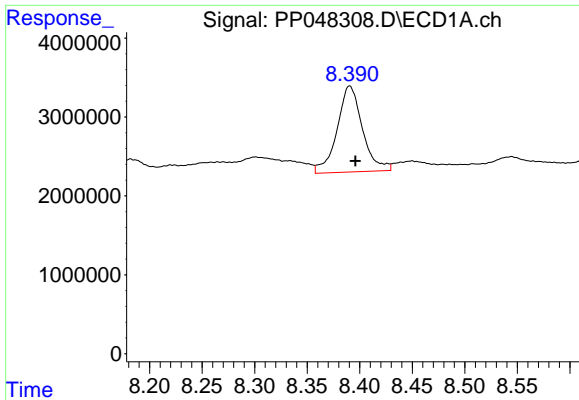
#36 AR-1262-1

R.T.: 7.776 min
 Delta R.T.: -0.005 min
 Response: 14438215
 Conc: 126.60 ng/ml



#36 AR-1262-1

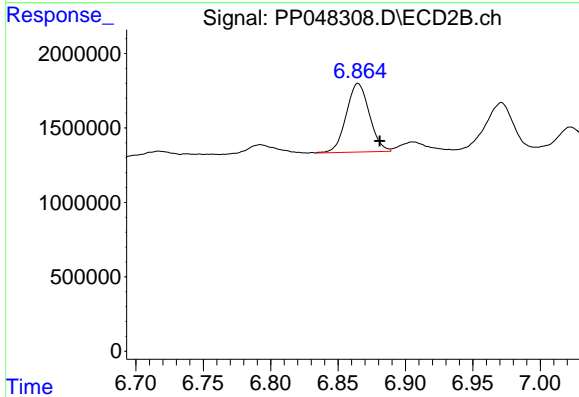
R.T.: 6.582 min
 Delta R.T.: -0.016 min
 Response: 9803408
 Conc: 90.74 ng/ml



#37 AR-1262-2

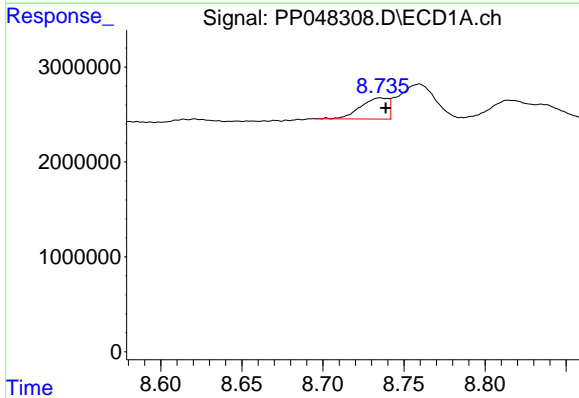
R.T.: 8.390 min
 Delta R.T.: -0.005 min
 Response: 18324050
 Conc: 85.97 ng/ml

Instrument :
 ECD_P
 ClientSampleId :



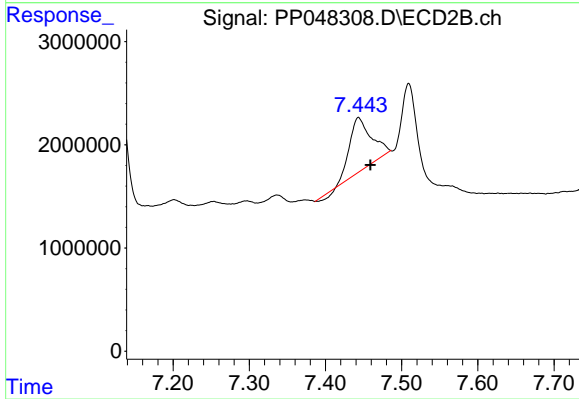
#37 AR-1262-2

R.T.: 6.865 min
 Delta R.T.: -0.016 min
 Response: 5512633
 Conc: 55.70 ng/ml



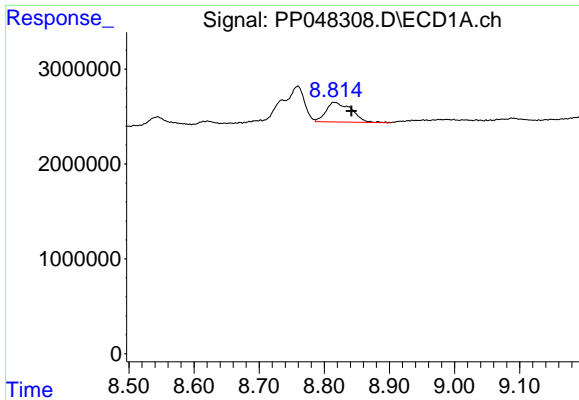
#38 AR-1262-3

R.T.: 8.735 min
 Delta R.T.: -0.003 min
 Response: 2687615
 Conc: 28.84 ng/ml



#38 AR-1262-3

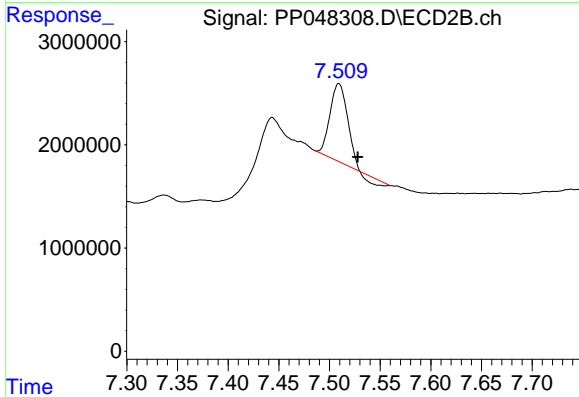
R.T.: 7.443 min
 Delta R.T.: -0.016 min
 Response: 10039128
 Conc: 133.40 ng/ml



#39 AR-1262-4

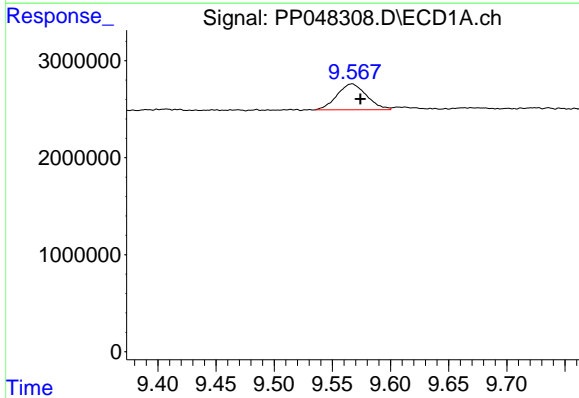
R.T.: 8.815 min
 Delta R.T.: -0.027 min
 Response: 5618910
 Conc: 94.50 ng/ml

Instrument :
 ECD_P
 ClientSampleId :



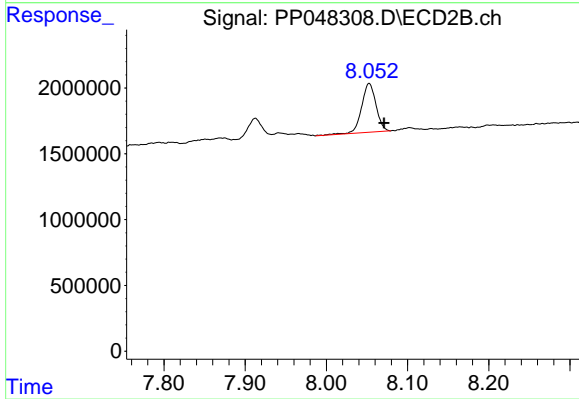
#39 AR-1262-4

R.T.: 7.509 min
 Delta R.T.: -0.019 min
 Response: 8380336
 Conc: 57.54 ng/ml



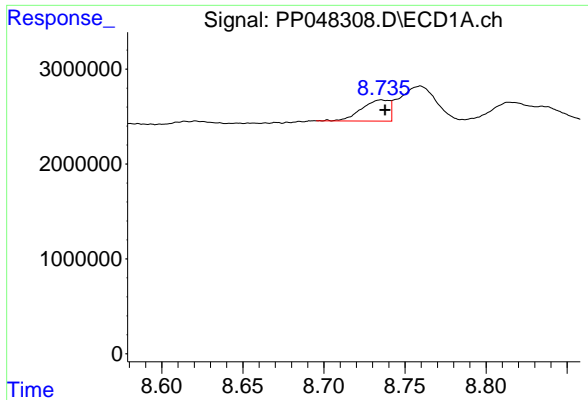
#40 AR-1262-5

R.T.: 9.567 min
 Delta R.T.: -0.007 min
 Response: 4716515
 Conc: 59.59 ng/ml



#40 AR-1262-5

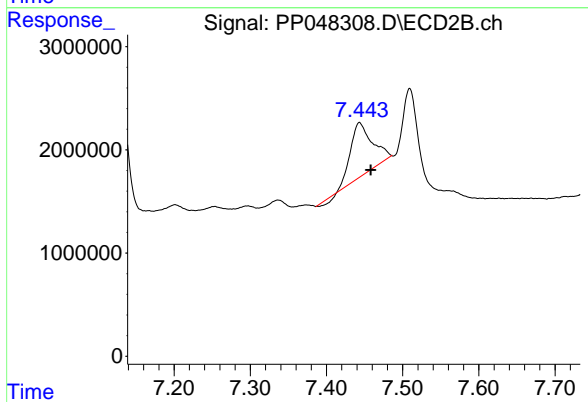
R.T.: 8.053 min
 Delta R.T.: -0.018 min
 Response: 4591838
 Conc: 68.03 ng/ml



#41 AR-1268-1

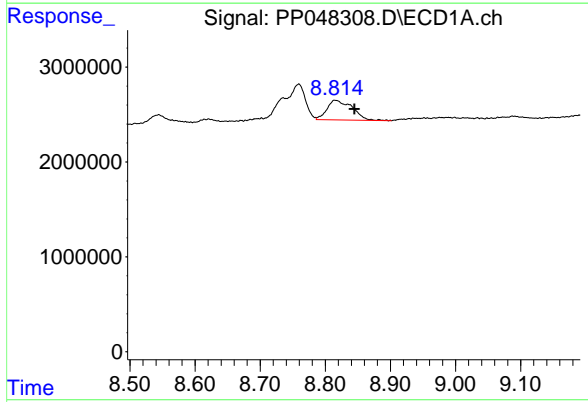
R.T.: 8.735 min
 Delta R.T.: -0.002 min
 Response: 2687615
 Conc: 10.16 ng/ml

Instrument :
 ECD_P
 ClientSampleId :



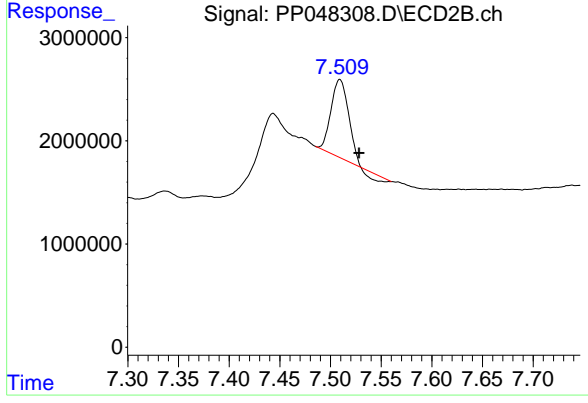
#41 AR-1268-1

R.T.: 7.443 min
 Delta R.T.: -0.015 min
 Response: 10039128
 Conc: 42.99 ng/ml



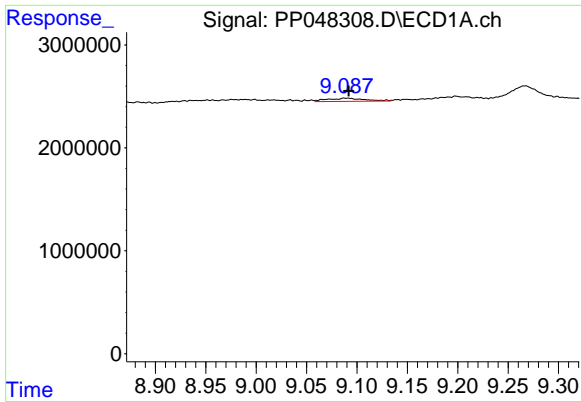
#42 AR-1268-2

R.T.: 8.815 min
 Delta R.T.: -0.030 min
 Response: 5618910
 Conc: 23.27 ng/ml



#42 AR-1268-2

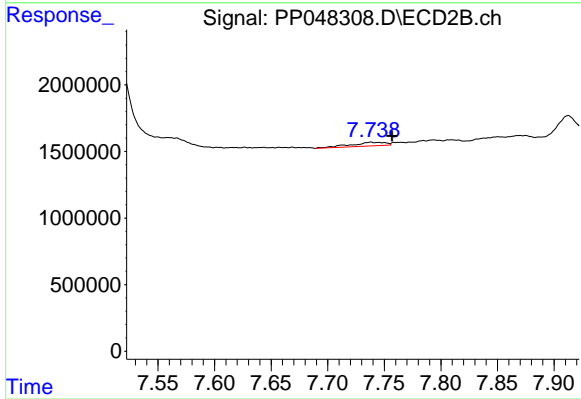
R.T.: 7.509 min
 Delta R.T.: -0.019 min
 Response: 8380336
 Conc: 38.73 ng/ml



#43 AR-1268-3

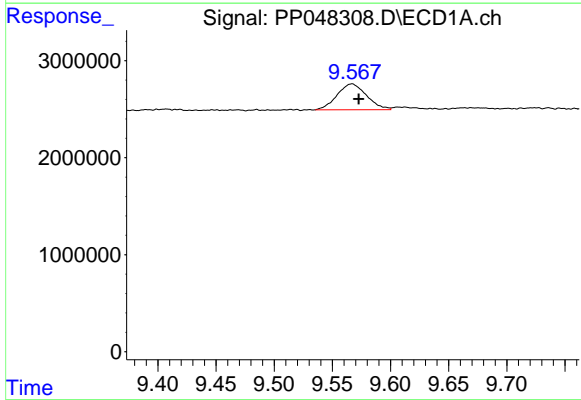
R.T.: 9.088 min
 Delta R.T.: -0.004 min
 Response: 825931
 Conc: 4.02 ng/ml

Instrument :
 ECD_P
 ClientSampleId :



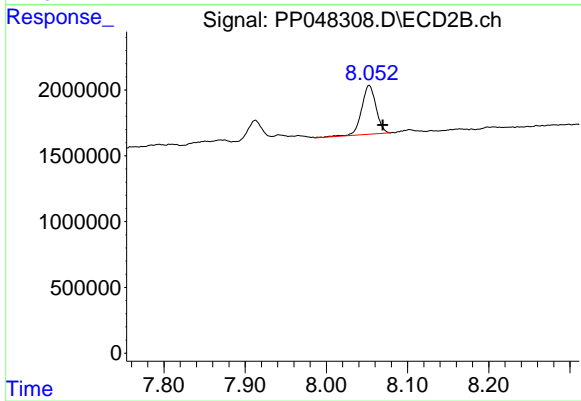
#43 AR-1268-3

R.T.: 7.738 min
 Delta R.T.: -0.019 min
 Response: 577462
 Conc: 3.11 ng/ml



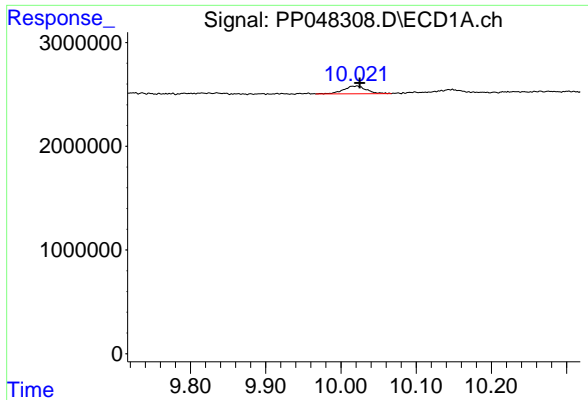
#44 AR-1268-4

R.T.: 9.567 min
 Delta R.T.: -0.006 min
 Response: 4716515
 Conc: 52.51 ng/ml



#44 AR-1268-4

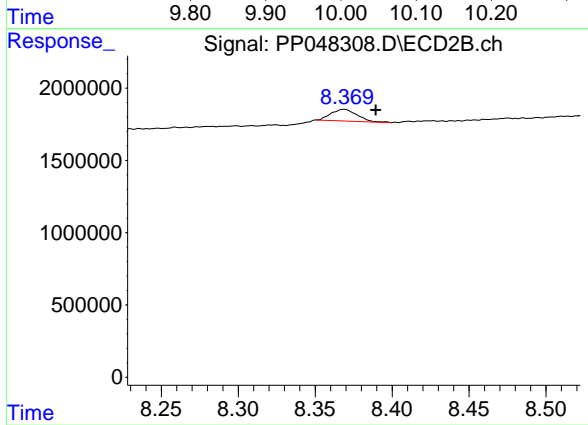
R.T.: 8.053 min
 Delta R.T.: -0.017 min
 Response: 4591838
 Conc: 55.90 ng/ml



#45 AR-1268-5

R.T.: 10.021 min
 Delta R.T.: -0.004 min
 Response: 1575322
 Conc: 2.23 ng/ml

Instrument :
 ECD_P
 ClientSampleId :



#45 AR-1268-5

R.T.: 8.369 min
 Delta R.T.: -0.020 min
 Response: 943768
 Conc: 1.56 ng/ml