

Data Path : Z:\pestpcbsrv\HPCHEM1\ECD\_P\Data\PP060222\  
 Data File : PP048321.D  
 Signal(s) : Signal #1: ECD1A.ch Signal #2: ECD2B.ch  
 Acq On : 02 Jun 2022 14:02  
 Operator : YP\AJ  
 Sample : N2953-21MS  
 Misc :  
 ALS Vial : 22 Sample Multiplier: 1

Instrument :  
 ECD\_P  
 ClientSampleId :

Integration File signal 1: autoint1.e  
 Integration File signal 2: autoint2.e  
 Quant Time: Jun 03 02:22:26 2022  
 Quant Method : Z:\pestpcbsrv\HPCHEM1\ECD\_P\methods\PP052722.M  
 Quant Title : GC EXTRACTABLES  
 QLast Update : Fri May 27 23:53:39 2022  
 Response via : Initial Calibration  
 Integrator: ChemStation

Volume Inj. : 2 µl  
 Signal #1 Phase : ZB-MR1 Signal #2 Phase: ZB-MR2  
 Signal #1 Info : 30Mx0.32mmx 0.50µ Signal #2 Info : 30M x 0.32mm x 0.25µm

Compound	RT#1	RT#2	Resp#1	Resp#2	ng/ml	ng/ml
System Monitoring Compounds						
1) SA Tetrachlo...	4.034	3.215	51407616	41631739	21.952	21.125
2) SA Decachlor...	10.385	8.644	37403272	29170006	19.244	18.045
Target Compounds						
3) L1 AR-1016-1	5.322	4.394	42017542	50379288	498.260	749.053 #
4) L1 AR-1016-2	5.346	4.394	63973911	50379288	540.703	540.953
5) L1 AR-1016-3	5.413	4.581	40803419	27037354	603.817	527.791
6) L1 AR-1016-4	5.523	4.630	34927400	21222395	566.628	557.006
7) L1 AR-1016-5	5.847	4.856	38445102	16173657	682.508	338.747 #
8) L2 AR-1221-1	4.269	3.446	9582189	3963842	362.463	191.238 #
9) L2 AR-1221-2	4.364	3.537	6055904	5181754	295.684	337.362
10) L2 AR-1221-3	4.449	3.618	24700537	19712198	394.530	397.466
11) L3 AR-1232-1	4.449	3.618	24700537	19712198	475.551	456.394
12) L3 AR-1232-2	5.025	4.394	34972528	50379288	1456.709	1250.399
13) L3 AR-1232-3	5.346	4.581	63973911	27037354	1289.221	1310.528
14) L3 AR-1232-4	5.523	4.674	34927400	26383866	1461.098	1520.306
15) L3 AR-1232-5	5.624	4.856	28331790	16173657	1734.175	825.704 #
16) L4 AR-1242-1	5.322	4.394	42017542	50379288	751.365	1056.457 #
17) L4 AR-1242-2	5.346	4.394	63973911	50379288	777.852	758.199
18) L4 AR-1242-3	5.413	4.581	40803419	27037354	831.207	779.454
19) L4 AR-1242-4	5.523	4.674	34927400	26383866	882.616	821.448
20) L4 AR-1242-5	6.337	5.237	14469117	21221593	339.736	508.153 #
21) L5 AR-1248-1	5.322	4.394	42017542	50379288	974.106	1376.480 #
22) L5 AR-1248-2	5.624	4.630	28331790	21222395	495.408	445.629
23) L5 AR-1248-3	5.847	4.674	38445102	26383866	568.004	532.570
24) L5 AR-1248-4	0.000	4.856	0	16173657	N.D.	277.616 #
25) L5 AR-1248-5	6.337	5.316f	14469117	711929	190.217	11.803 #
26) L6 AR-1254-1	6.266	5.237	55253891	21221593	761.114	242.078 #
27) L6 AR-1254-2	6.505	5.398	37582000	21622969	315.848	287.784
28) L6 AR-1254-3	6.913	5.852	24132620	39662433	203.147	323.260 #
29) L6 AR-1254-4	7.229	6.083	16555372	4770227	183.542	63.529 #
30) L6 AR-1254-5	7.696	6.538f	110.6E6	97590464	1193.471	963.983
31) L7 AR-1260-1	7.092	5.976	73495588	58119383	787.428	678.937
32) L7 AR-1260-2	7.379	6.182	97663703	90333889	873.669	876.369
33) L7 AR-1260-3	7.777	6.348	73426855	63761046	857.222	643.905
34) L7 AR-1260-4	8.029	6.864	72810112	51075617	701.738	613.516
35) L7 AR-1260-5	8.391	7.130	140.3E6	133.0E6	679.939	670.503
36) L8 AR-1262-1	7.777	6.582f	73426855	69315398	643.815	641.557
37) L8 AR-1262-2	8.391	6.864f	140.3E6	51075617	658.272	516.102
38) L8 AR-1262-3	8.759f	7.442f	91571406	38727711	982.593	514.622 #
39) L8 AR-1262-4	8.816f	7.509f	51202209	92306687	861.143	633.773 #
40) L8 AR-1262-5	9.567	8.053f	37413642	32848001	472.707	486.687
41) L9 AR-1268-1	8.759f	7.442f	91571406	38727711	346.161	165.824 #

Data Path : Z:\pestpcbsrv\HPCHEM1\ECD\_P\Data\PP060222\  
 Data File : PP048321.D  
 Signal(s) : Signal #1: ECD1A.ch Signal #2: ECD2B.ch  
 Acq On : 02 Jun 2022 14:02  
 Operator : YP\AJ  
 Sample : N2953-21MS  
 Misc :  
 ALS Vial : 22 Sample Multiplier: 1

Instrument :  
 ECD\_P  
 ClientSampleId :

Integration File signal 1: autoint1.e  
 Integration File signal 2: autoint2.e  
 Quant Time: Jun 03 02:22:26 2022  
 Quant Method : Z:\pestpcbsrv\HPCHEM1\ECD\_P\methods\PP052722.M  
 Quant Title : GC EXTRACTABLES  
 QLast Update : Fri May 27 23:53:39 2022  
 Response via : Initial Calibration  
 Integrator: ChemStation

Volume Inj. : 2 µl  
 Signal #1 Phase : ZB-MR1 Signal #2 Phase: ZB-MR2  
 Signal #1 Info : 30Mx0.32mmx 0.50µ Signal #2 Info : 30M x 0.32mm x 0.25µm

	Compound	RT#1	RT#2	Resp#1	Resp#2	ng/ml	ng/ml
42)	L9 AR-1268-2	8.816f	7.509f	51202209	92306687	212.021	426.626 #
43)	L9 AR-1268-3	9.088	7.738f	3030739	2204353	14.742	11.859
44)	L9 AR-1268-4	9.567	8.053f	37413642	32848001	416.496	399.853
45)	L9 AR-1268-5	10.020	8.369f	11744935	7783379	16.635	12.845

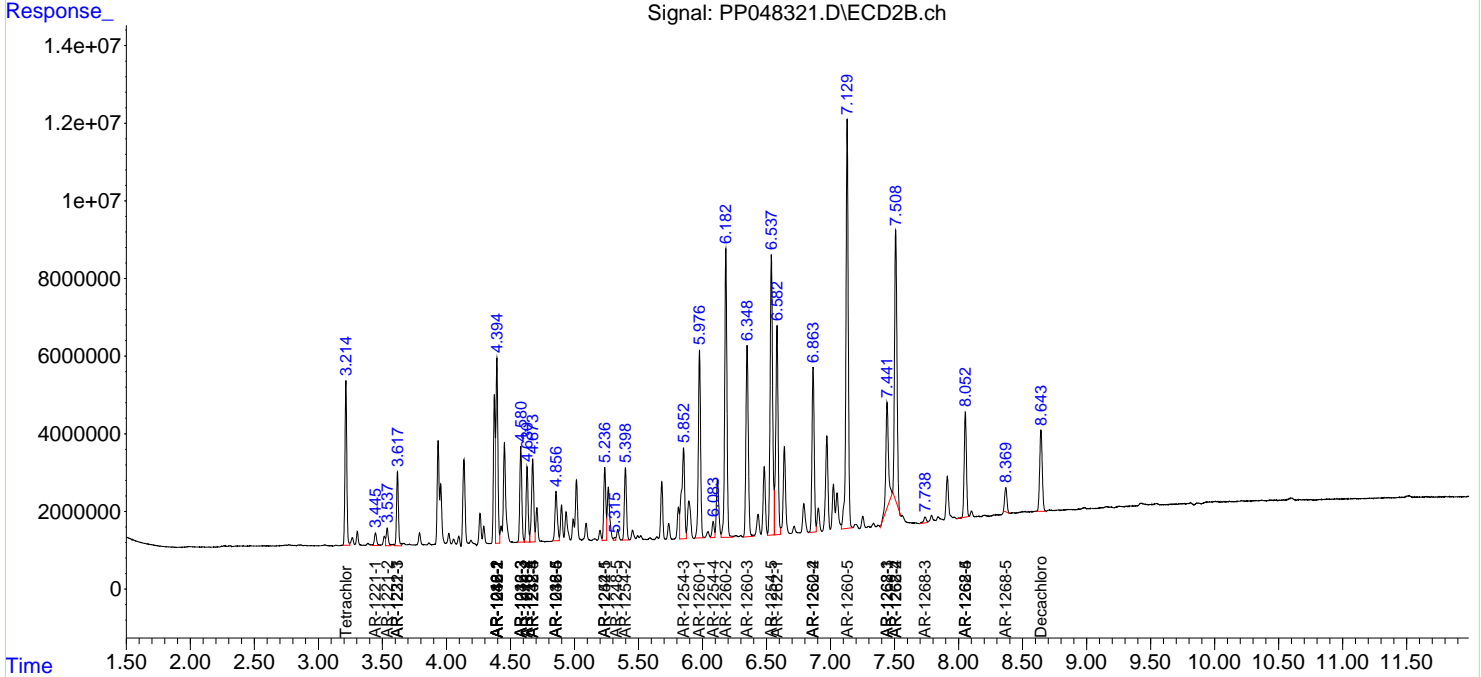
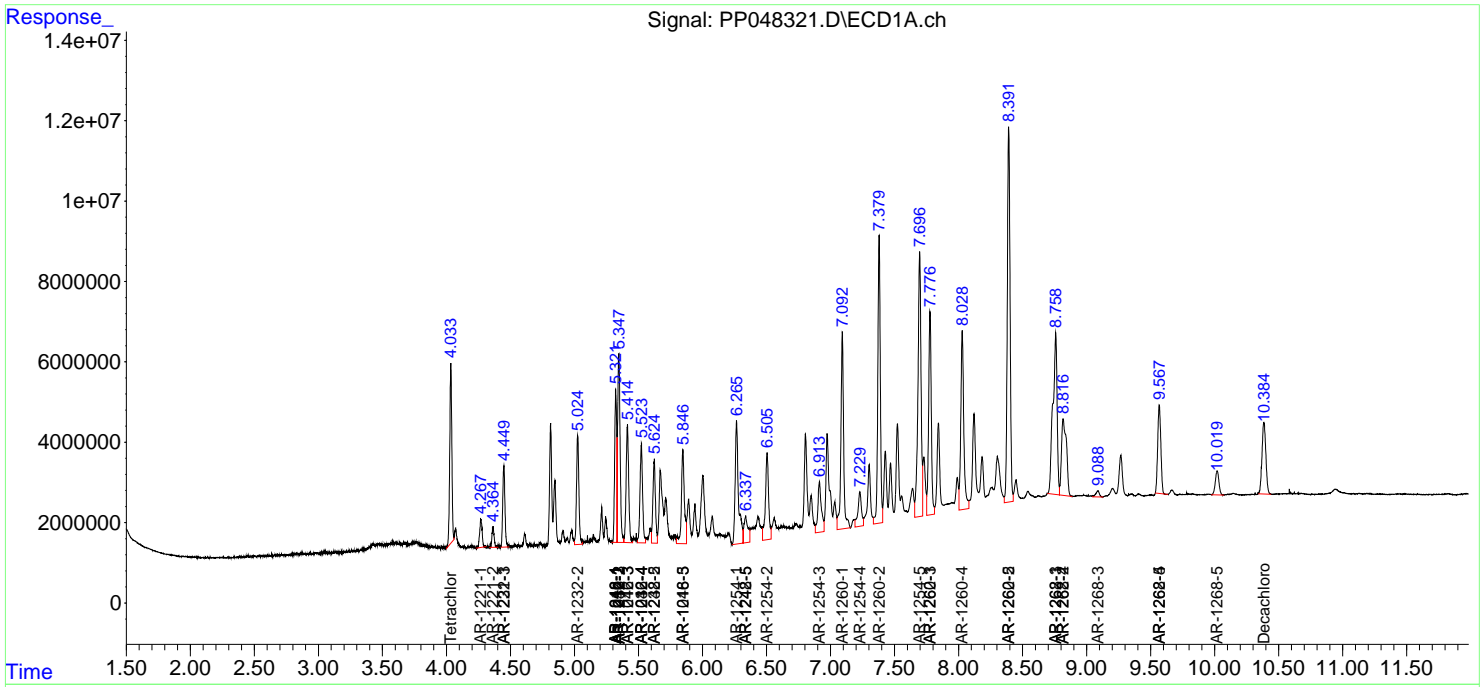
(f)=RT Delta > 1/2 Window (#)=Amounts differ by > 25% (m)=manual int.

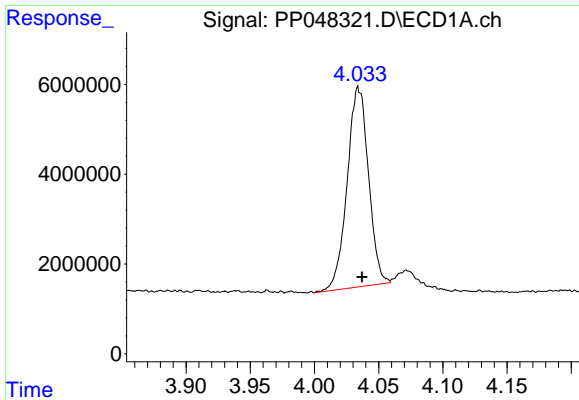
Data Path : Z:\pestpcbsrv\HPCHEM1\ECD\_P\Data\PP060222\  
 Data File : PP048321.D  
 Signal(s) : Signal #1: ECD1A.ch Signal #2: ECD2B.ch  
 Acq On : 02 Jun 2022 14:02  
 Operator : YP\AJ  
 Sample : N2953-21MS  
 Misc :  
 ALS Vial : 22 Sample Multiplier: 1

Instrument :  
 ECD\_P  
 ClientSampleId :

Integration File signal 1: autoint1.e  
 Integration File signal 2: autoint2.e  
 Quant Time: Jun 03 02:22:26 2022  
 Quant Method : Z:\pestpcbsrv\HPCHEM1\ECD\_P\methods\PP052722.M  
 Quant Title : GC EXTRACTABLES  
 QLast Update : Fri May 27 23:53:39 2022  
 Response via : Initial Calibration  
 Integrator: ChemStation

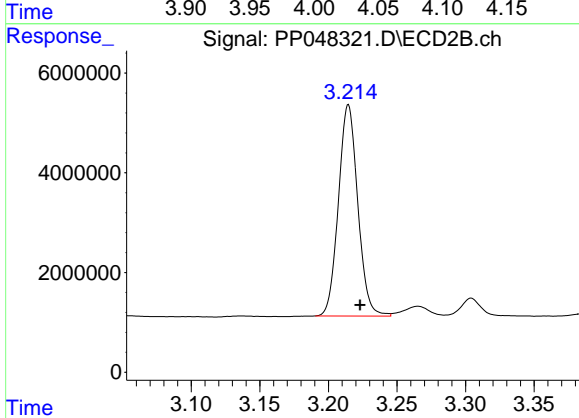
Volume Inj. : 2 µl  
 Signal #1 Phase : ZB-MR1 Signal #2 Phase: ZB-MR2  
 Signal #1 Info : 30Mx0.32mmx 0.50µ Signal #2 Info : 30M x 0.32mm x 0.25µm



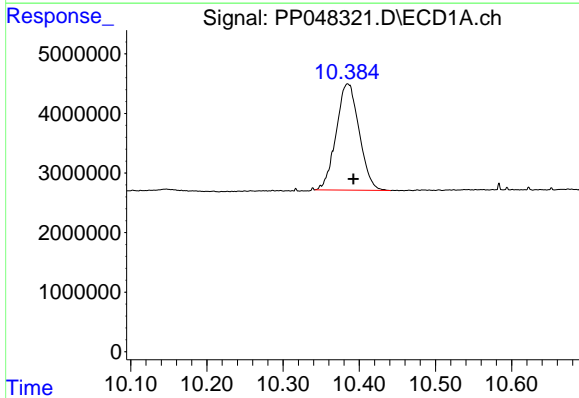


#1 Tetrachloro-m-xylene  
 R.T.: 4.034 min  
 Delta R.T.: -0.003 min  
 Response: 51407616  
 Conc: 21.95 ng/ml

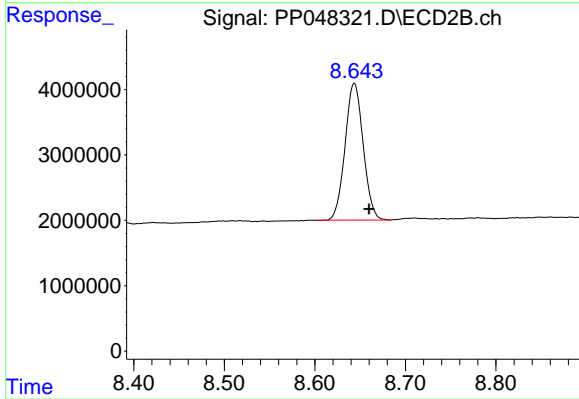
Instrument :  
 ECD\_P  
 ClientSampleId :



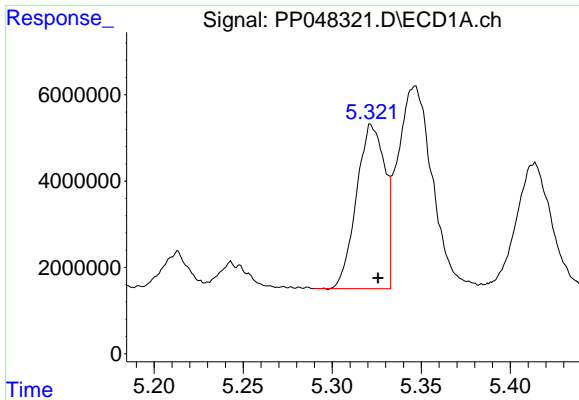
#1 Tetrachloro-m-xylene  
 R.T.: 3.215 min  
 Delta R.T.: -0.008 min  
 Response: 41631739  
 Conc: 21.12 ng/ml



#2 Decachlorobiphenyl  
 R.T.: 10.385 min  
 Delta R.T.: -0.007 min  
 Response: 37403272  
 Conc: 19.24 ng/ml



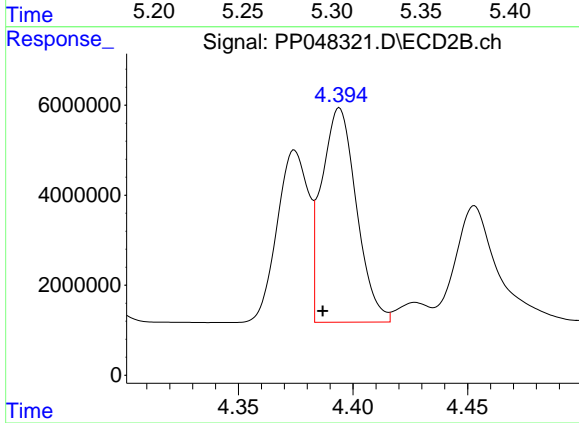
#2 Decachlorobiphenyl  
 R.T.: 8.644 min  
 Delta R.T.: -0.016 min  
 Response: 29170006  
 Conc: 18.05 ng/ml



#3 AR-1016-1

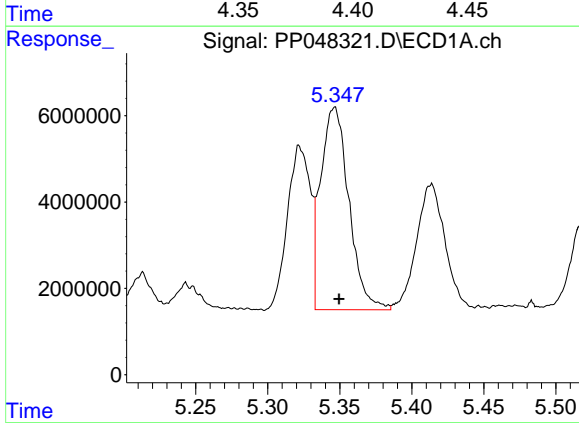
R.T.: 5.322 min  
 Delta R.T.: -0.004 min  
 Response: 42017542  
 Conc: 498.26 ng/ml

Instrument :  
 ECD\_P  
 ClientSampleId :



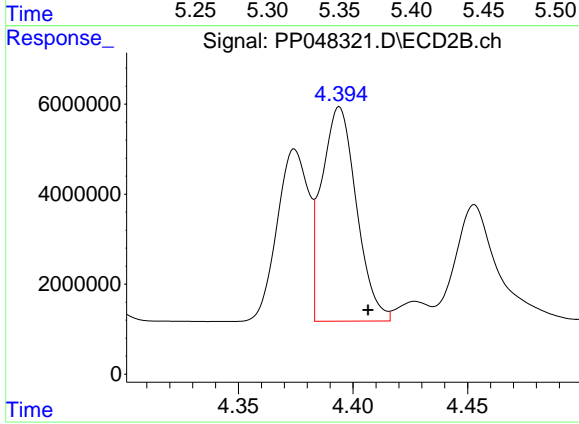
#3 AR-1016-1

R.T.: 4.394 min  
 Delta R.T.: 0.007 min  
 Response: 50379288  
 Conc: 749.05 ng/ml



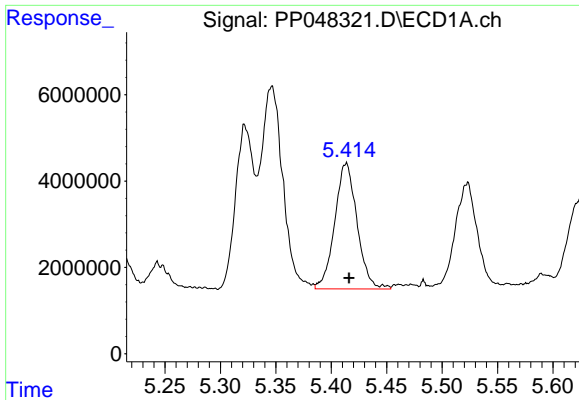
#4 AR-1016-2

R.T.: 5.346 min  
 Delta R.T.: -0.003 min  
 Response: 63973911  
 Conc: 540.70 ng/ml



#4 AR-1016-2

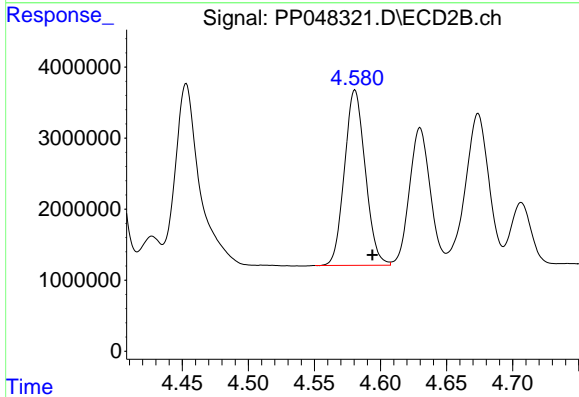
R.T.: 4.394 min  
 Delta R.T.: -0.012 min  
 Response: 50379288  
 Conc: 540.95 ng/ml



#5 AR-1016-3

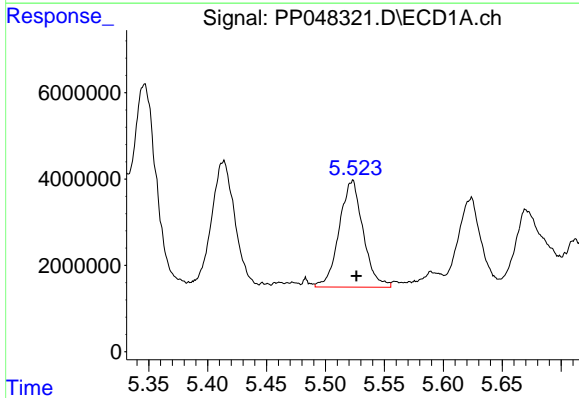
R.T.: 5.413 min  
 Delta R.T.: -0.003 min  
 Response: 40803419  
 Conc: 603.82 ng/ml

Instrument :  
 ECD\_P  
 ClientSampleId :



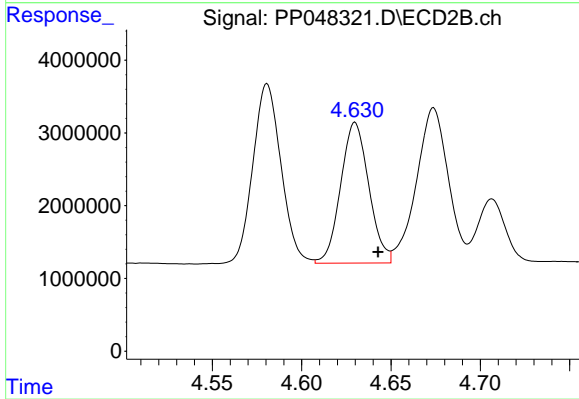
#5 AR-1016-3

R.T.: 4.581 min  
 Delta R.T.: -0.013 min  
 Response: 27037354  
 Conc: 527.79 ng/ml



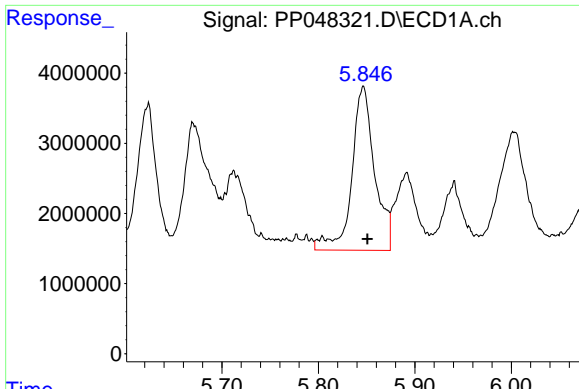
#6 AR-1016-4

R.T.: 5.523 min  
 Delta R.T.: -0.004 min  
 Response: 34927400  
 Conc: 566.63 ng/ml



#6 AR-1016-4

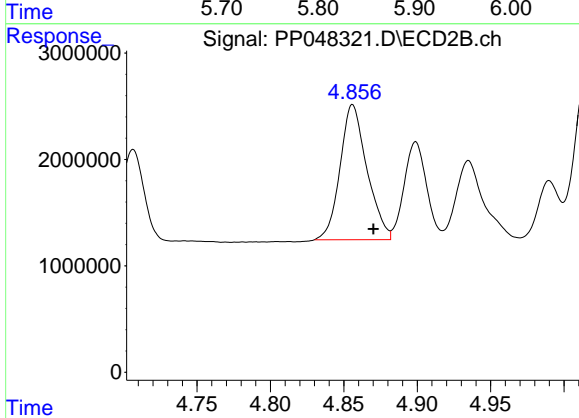
R.T.: 4.630 min  
 Delta R.T.: -0.013 min  
 Response: 21222395  
 Conc: 557.01 ng/ml



#7 AR-1016-5

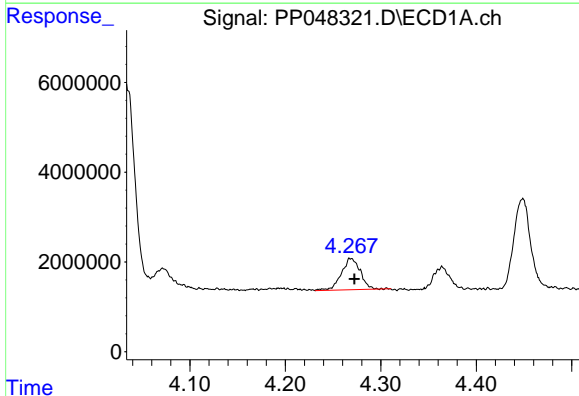
R.T.: 5.847 min  
 Delta R.T.: -0.004 min  
 Response: 38445102  
 Conc: 682.51 ng/ml

Instrument :  
 ECD\_P  
 ClientSampleId :



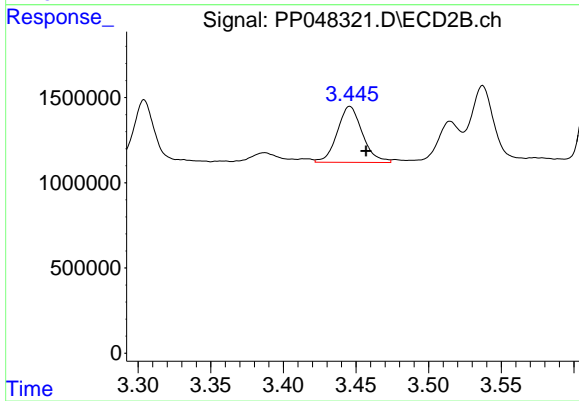
#7 AR-1016-5

R.T.: 4.856 min  
 Delta R.T.: -0.014 min  
 Response: 16173657  
 Conc: 338.75 ng/ml



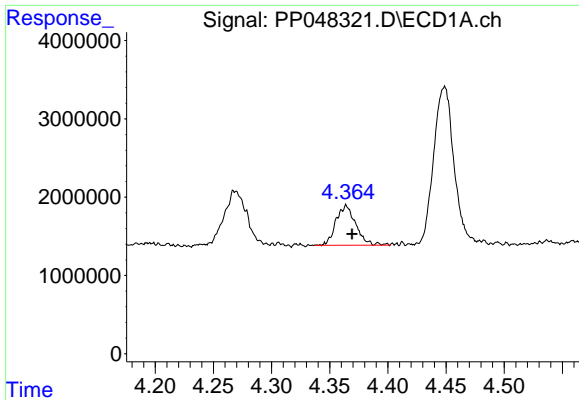
#8 AR-1221-1

R.T.: 4.269 min  
 Delta R.T.: -0.004 min  
 Response: 9582189  
 Conc: 362.46 ng/ml



#8 AR-1221-1

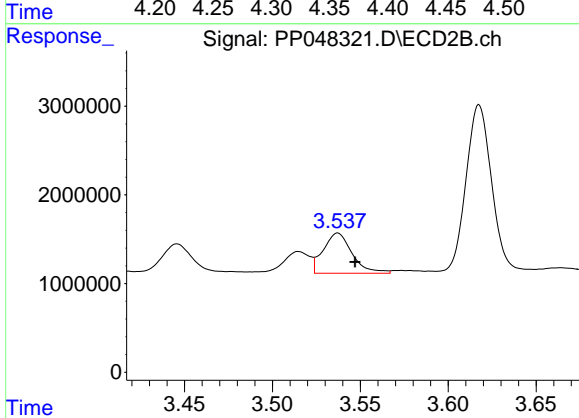
R.T.: 3.446 min  
 Delta R.T.: -0.011 min  
 Response: 3963842  
 Conc: 191.24 ng/ml



#9 AR-1221-2

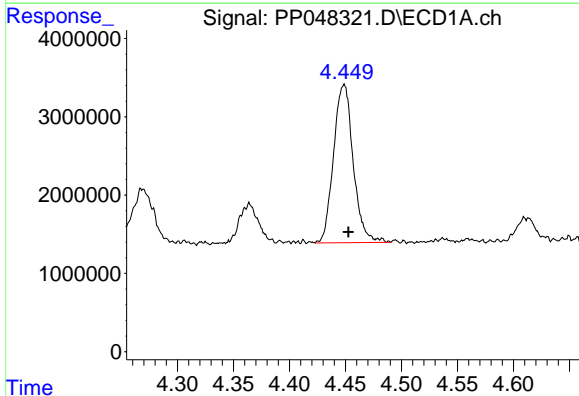
R.T.: 4.364 min  
 Delta R.T.: -0.005 min  
 Response: 6055904  
 Conc: 295.68 ng/ml

Instrument :  
 ECD\_P  
 ClientSampleId :



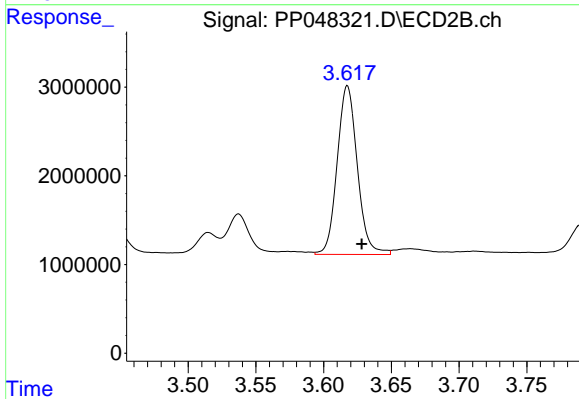
#9 AR-1221-2

R.T.: 3.537 min  
 Delta R.T.: -0.010 min  
 Response: 5181754  
 Conc: 337.36 ng/ml



#10 AR-1221-3

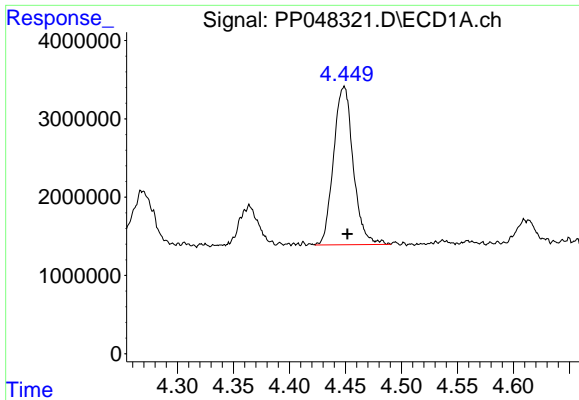
R.T.: 4.449 min  
 Delta R.T.: -0.004 min  
 Response: 24700537  
 Conc: 394.53 ng/ml



#10 AR-1221-3

R.T.: 3.618 min  
 Delta R.T.: -0.011 min  
 Response: 19712198  
 Conc: 397.47 ng/ml

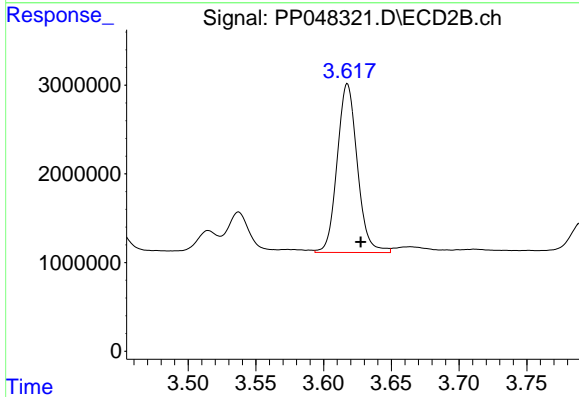




#11 AR-1232-1

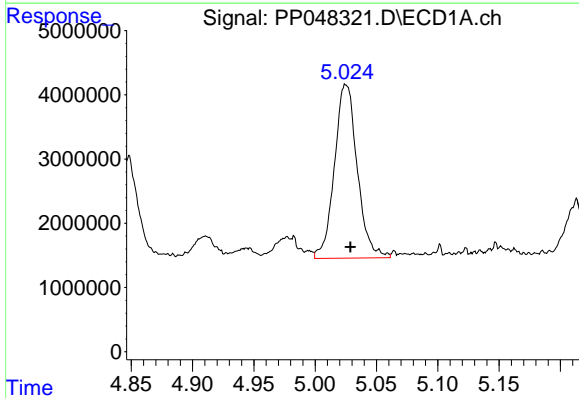
R.T.: 4.449 min  
 Delta R.T.: -0.003 min  
 Response: 24700537  
 Conc: 475.55 ng/ml

Instrument :  
 ECD\_P  
 ClientSampleId :



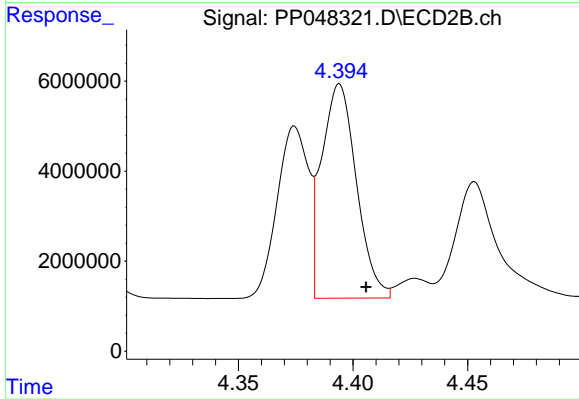
#11 AR-1232-1

R.T.: 3.618 min  
 Delta R.T.: -0.010 min  
 Response: 19712198  
 Conc: 456.39 ng/ml



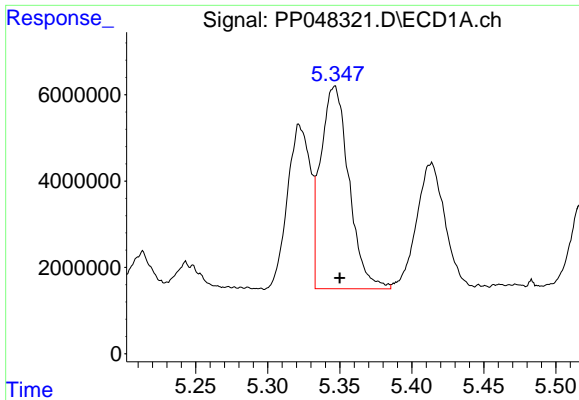
#12 AR-1232-2

R.T.: 5.025 min  
 Delta R.T.: -0.004 min  
 Response: 34972528  
 Conc: 1456.71 ng/ml



#12 AR-1232-2

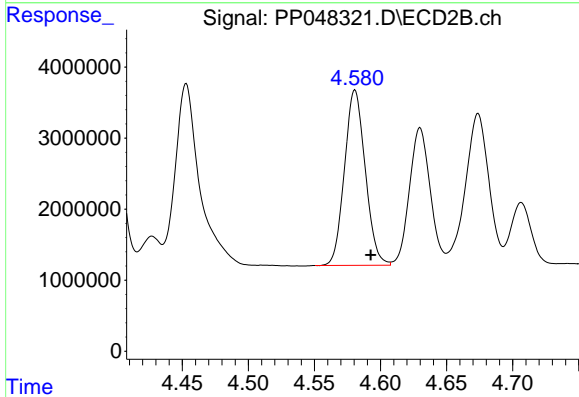
R.T.: 4.394 min  
 Delta R.T.: -0.012 min  
 Response: 50379288  
 Conc: 1250.40 ng/ml



#13 AR-1232-3

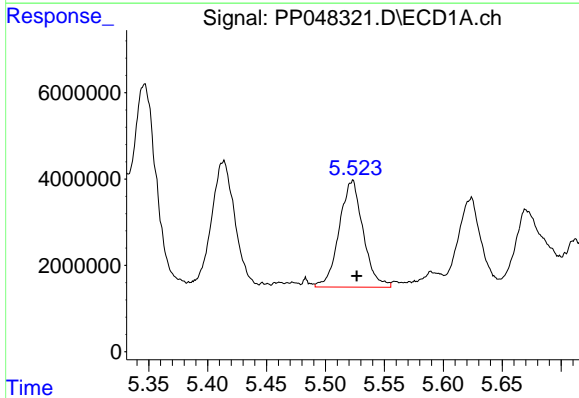
R.T.: 5.346 min  
 Delta R.T.: -0.004 min  
 Response: 63973911  
 Conc: 1289.22 ng/m

Instrument :  
 ECD\_P  
 ClientSampleId :



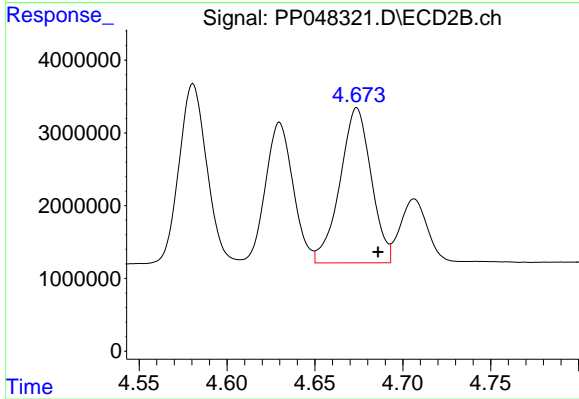
#13 AR-1232-3

R.T.: 4.581 min  
 Delta R.T.: -0.012 min  
 Response: 27037354  
 Conc: 1310.53 ng/ml



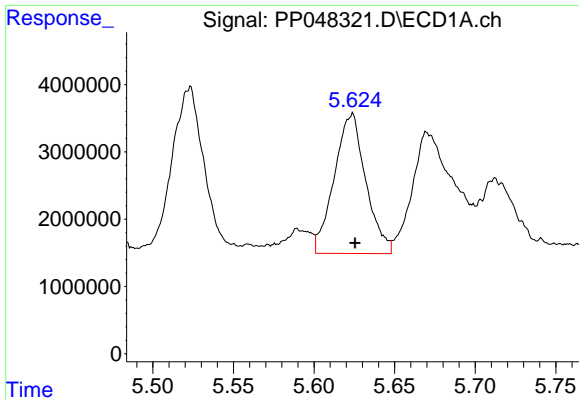
#14 AR-1232-4

R.T.: 5.523 min  
 Delta R.T.: -0.004 min  
 Response: 34927400  
 Conc: 1461.10 ng/ml



#14 AR-1232-4

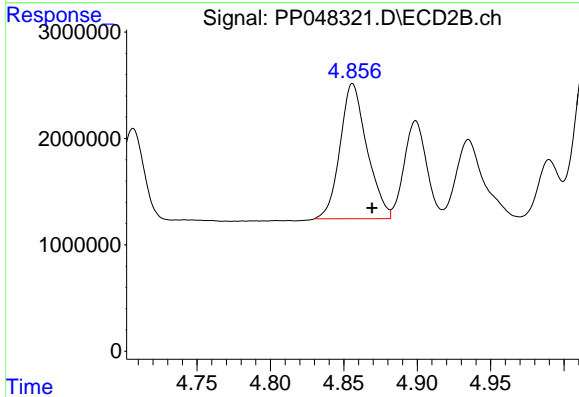
R.T.: 4.674 min  
 Delta R.T.: -0.012 min  
 Response: 26383866  
 Conc: 1520.31 ng/ml



#15 AR-1232-5

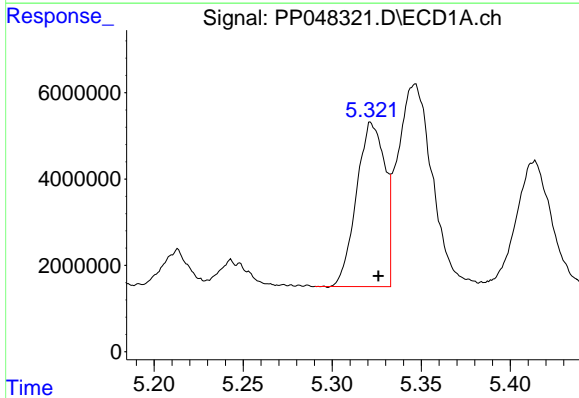
R.T.: 5.624 min  
 Delta R.T.: -0.002 min  
 Response: 28331790  
 Conc: 1734.18 ng/ml

Instrument :  
 ECD\_P  
 ClientSampleId :



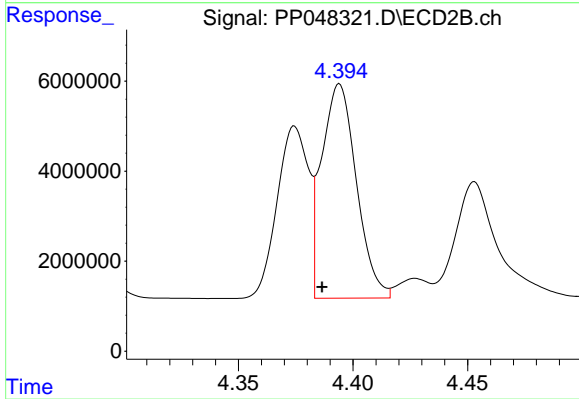
#15 AR-1232-5

R.T.: 4.856 min  
 Delta R.T.: -0.013 min  
 Response: 16173657  
 Conc: 825.70 ng/ml



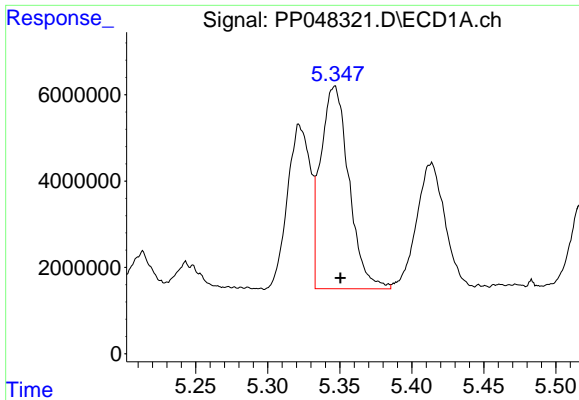
#16 AR-1242-1

R.T.: 5.322 min  
 Delta R.T.: -0.004 min  
 Response: 42017542  
 Conc: 751.37 ng/ml



#16 AR-1242-1

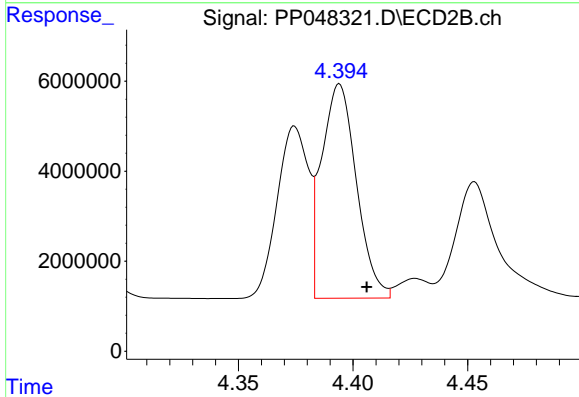
R.T.: 4.394 min  
 Delta R.T.: 0.008 min  
 Response: 50379288  
 Conc: 1056.46 ng/ml



#17 AR-1242-2

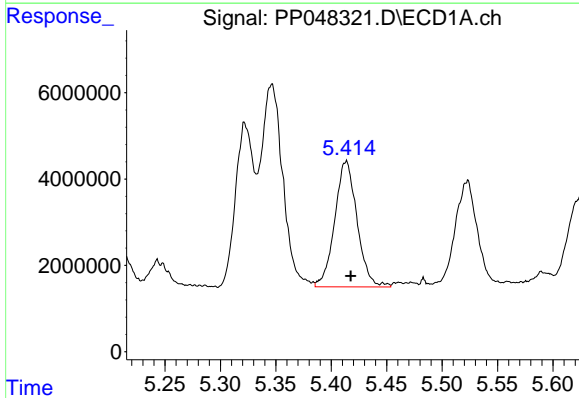
R.T.: 5.346 min  
 Delta R.T.: -0.004 min  
 Response: 63973911  
 Conc: 777.85 ng/ml

Instrument :  
 ECD\_P  
 ClientSampleId :



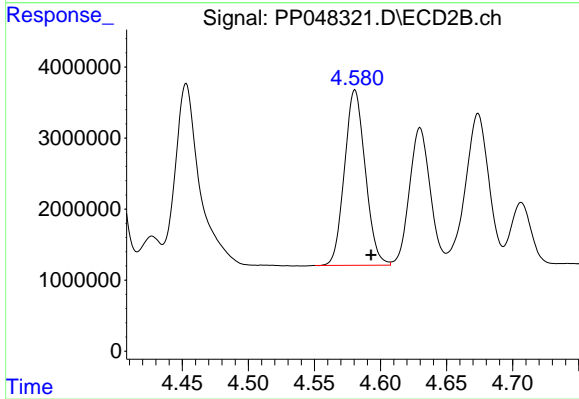
#17 AR-1242-2

R.T.: 4.394 min  
 Delta R.T.: -0.012 min  
 Response: 50379288  
 Conc: 758.20 ng/ml



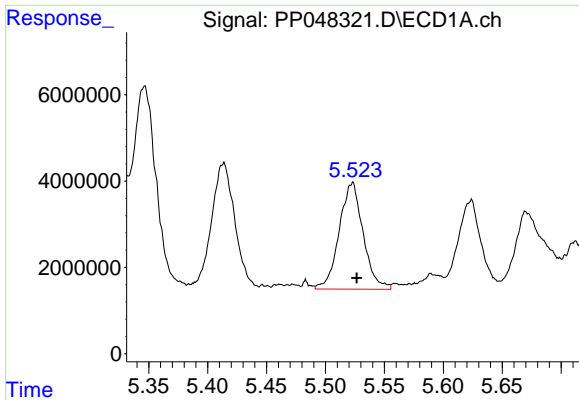
#18 AR-1242-3

R.T.: 5.413 min  
 Delta R.T.: -0.004 min  
 Response: 40803419  
 Conc: 831.21 ng/ml



#18 AR-1242-3

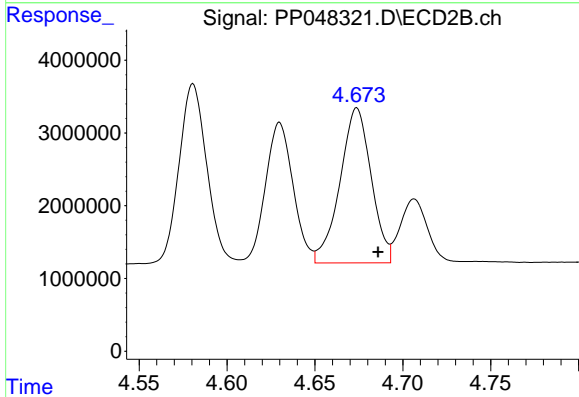
R.T.: 4.581 min  
 Delta R.T.: -0.012 min  
 Response: 27037354  
 Conc: 779.45 ng/ml



#19 AR-1242-4

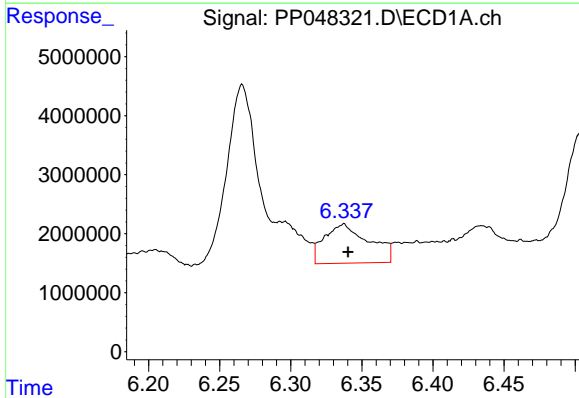
R.T.: 5.523 min  
 Delta R.T.: -0.004 min  
 Response: 34927400  
 Conc: 882.62 ng/ml

Instrument :  
 ECD\_P  
 ClientSampleId :



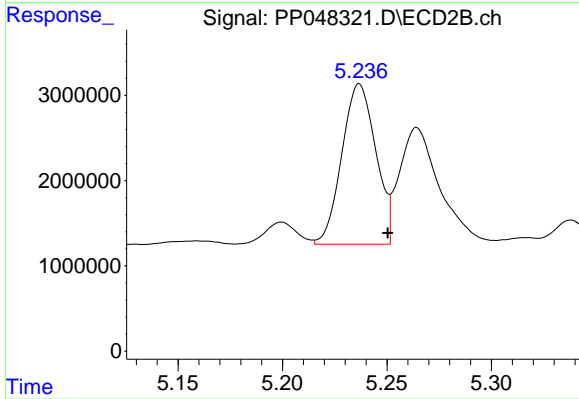
#19 AR-1242-4

R.T.: 4.674 min  
 Delta R.T.: -0.012 min  
 Response: 26383866  
 Conc: 821.45 ng/ml



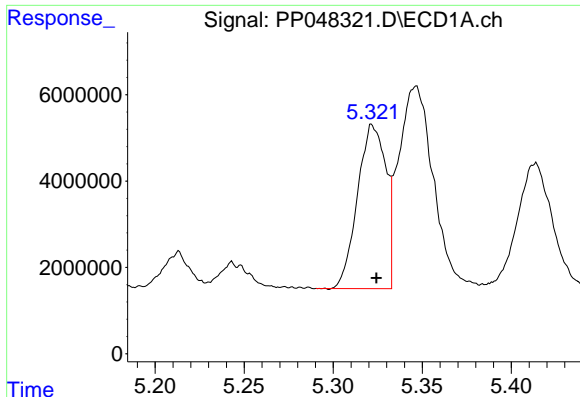
#20 AR-1242-5

R.T.: 6.337 min  
 Delta R.T.: -0.003 min  
 Response: 14469117  
 Conc: 339.74 ng/ml



#20 AR-1242-5

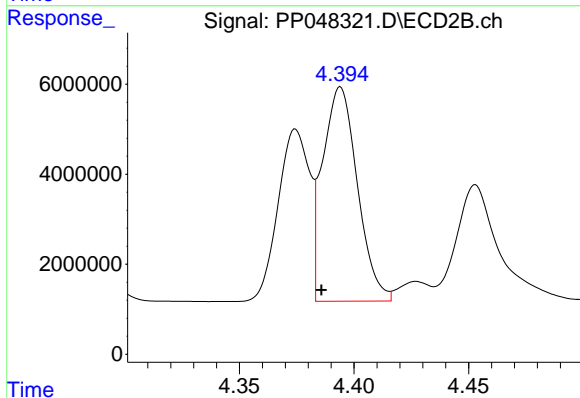
R.T.: 5.237 min  
 Delta R.T.: -0.014 min  
 Response: 21221593  
 Conc: 508.15 ng/ml



#21 AR-1248-1

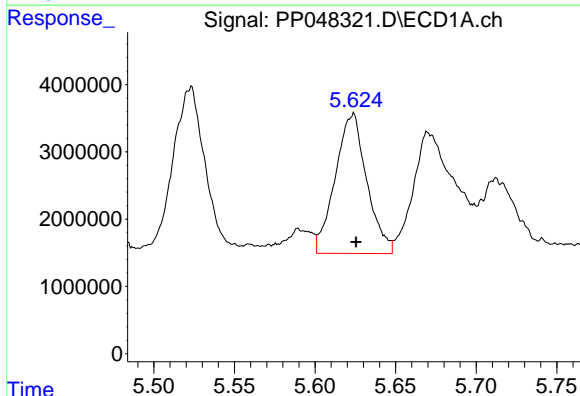
R.T.: 5.322 min  
 Delta R.T.: -0.002 min  
 Response: 42017542  
 Conc: 974.11 ng/ml

Instrument :  
 ECD\_P  
 ClientSampleId :



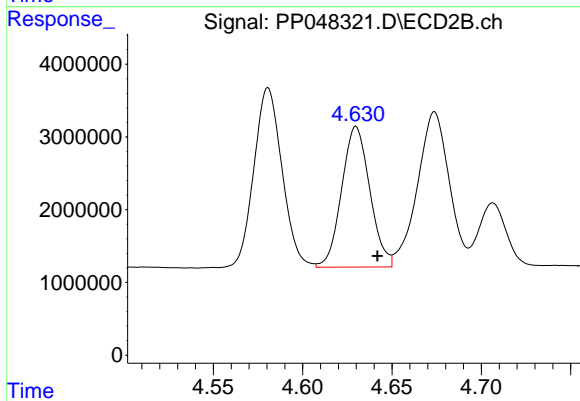
#21 AR-1248-1

R.T.: 4.394 min  
 Delta R.T.: 0.008 min  
 Response: 50379288  
 Conc: 1376.48 ng/ml



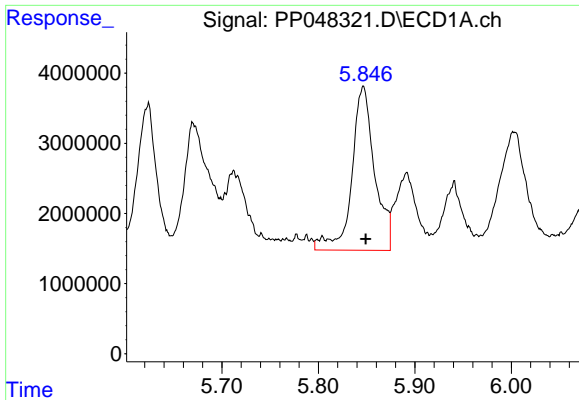
#22 AR-1248-2

R.T.: 5.624 min  
 Delta R.T.: -0.002 min  
 Response: 28331790  
 Conc: 495.41 ng/ml



#22 AR-1248-2

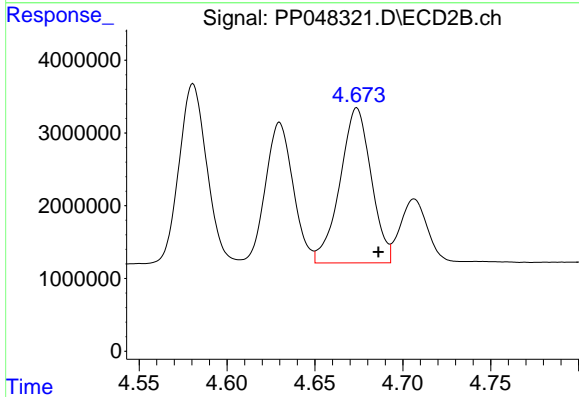
R.T.: 4.630 min  
 Delta R.T.: -0.012 min  
 Response: 21222395  
 Conc: 445.63 ng/ml



#23 AR-1248-3

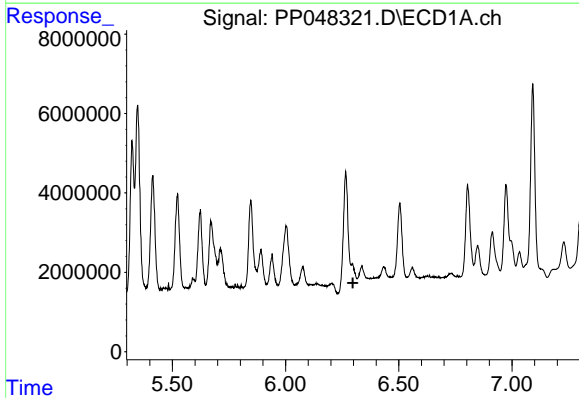
R.T.: 5.847 min  
 Delta R.T.: -0.002 min  
 Response: 38445102  
 Conc: 568.00 ng/ml

Instrument :  
 ECD\_P  
 ClientSampleId :



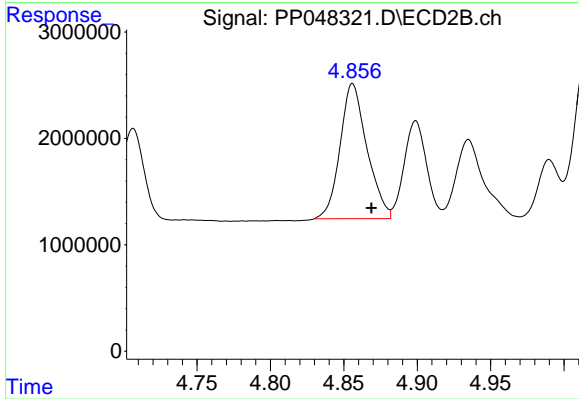
#23 AR-1248-3

R.T.: 4.674 min  
 Delta R.T.: -0.012 min  
 Response: 26383866  
 Conc: 532.57 ng/ml



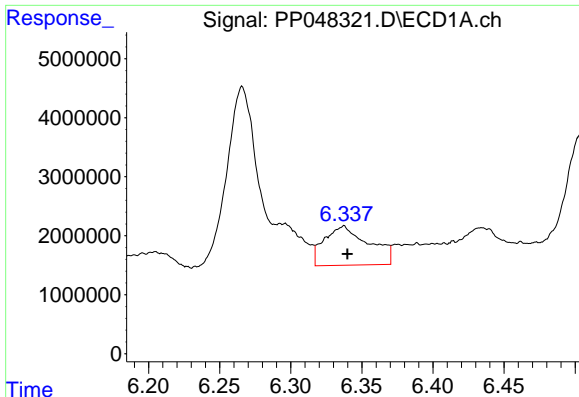
#24 AR-1248-4

R.T.: 0.000 min  
 Exp R.T. : 6.298 min  
 Response: 0  
 Conc: N.D.



#24 AR-1248-4

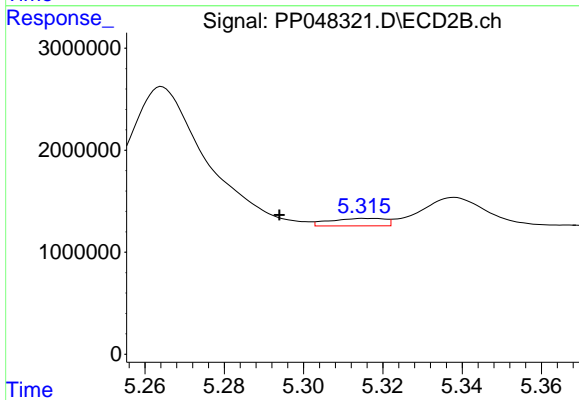
R.T.: 4.856 min  
 Delta R.T.: -0.013 min  
 Response: 16173657  
 Conc: 277.62 ng/ml



#25 AR-1248-5

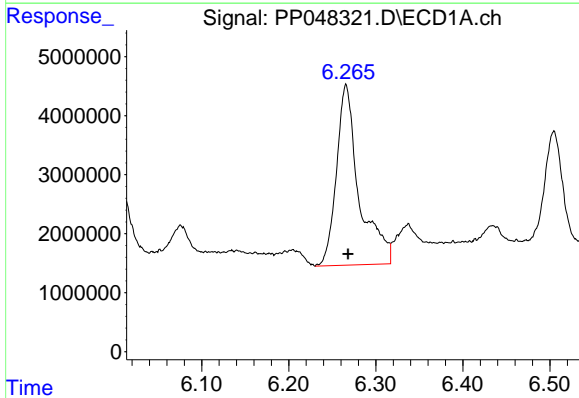
R.T.: 6.337 min  
 Delta R.T.: -0.003 min  
 Response: 14469117  
 Conc: 190.22 ng/ml

Instrument :  
 ECD\_P  
 ClientSampleId :



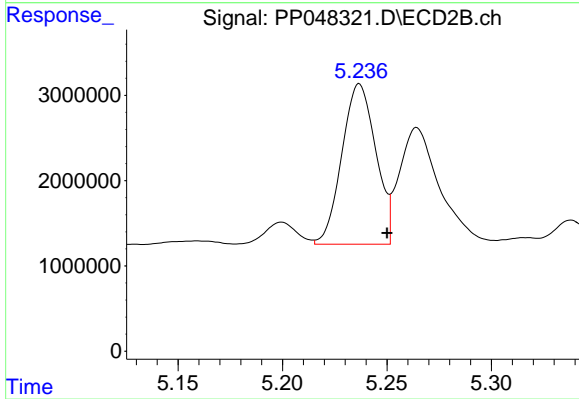
#25 AR-1248-5

R.T.: 5.316 min  
 Delta R.T.: 0.022 min  
 Response: 711929  
 Conc: 11.80 ng/ml



#26 AR-1254-1

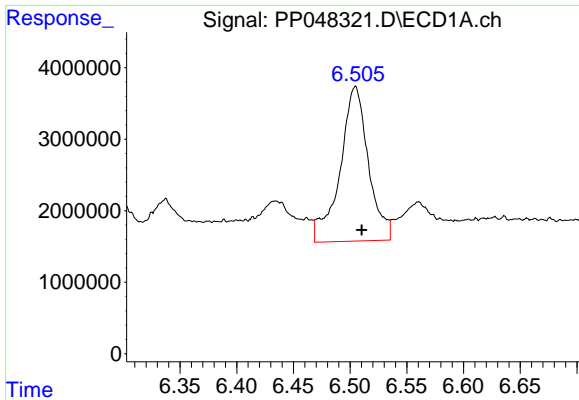
R.T.: 6.266 min  
 Delta R.T.: -0.002 min  
 Response: 55253891  
 Conc: 761.11 ng/ml



#26 AR-1254-1

R.T.: 5.237 min  
 Delta R.T.: -0.013 min  
 Response: 21221593  
 Conc: 242.08 ng/ml

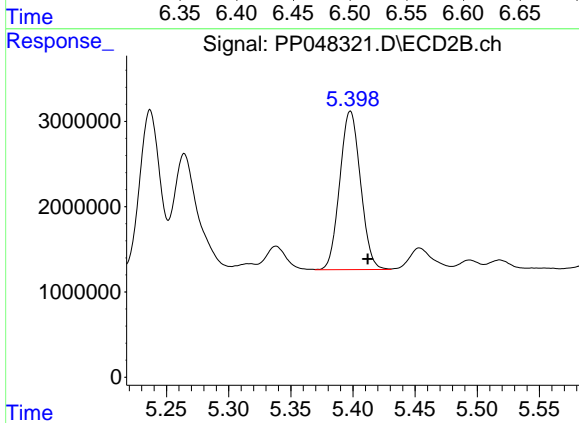




#27 AR-1254-2

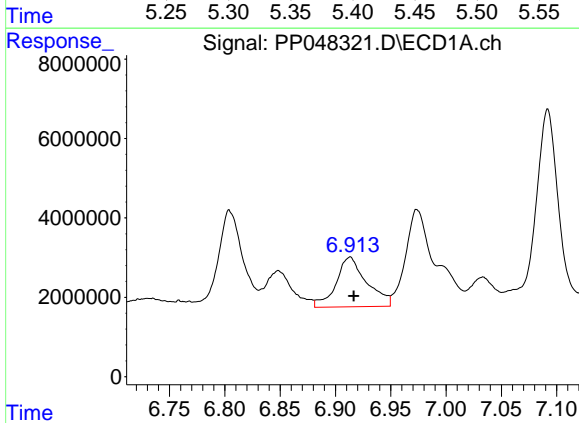
R.T.: 6.505 min  
 Delta R.T.: -0.006 min  
 Response: 37582000  
 Conc: 315.85 ng/ml

Instrument :  
 ECD\_P  
 ClientSampleId :



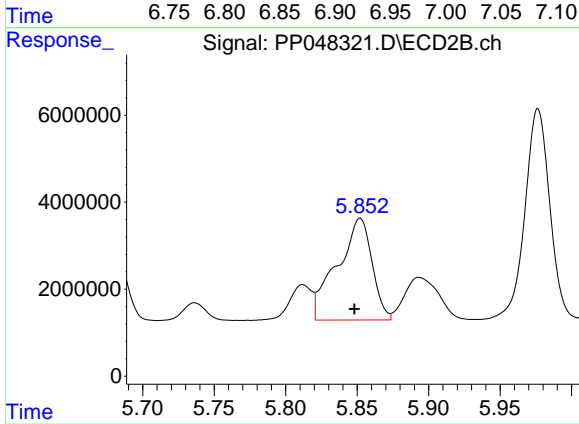
#27 AR-1254-2

R.T.: 5.398 min  
 Delta R.T.: -0.014 min  
 Response: 21622969  
 Conc: 287.78 ng/ml



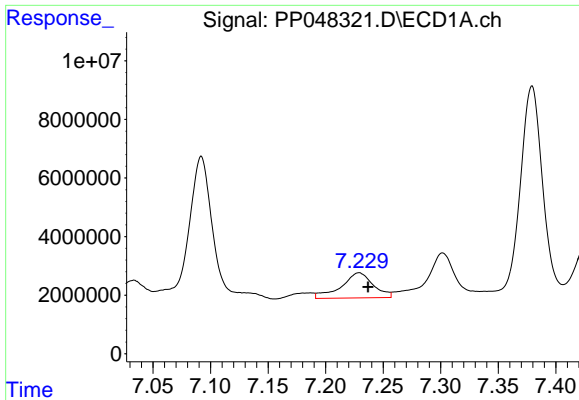
#28 AR-1254-3

R.T.: 6.913 min  
 Delta R.T.: -0.003 min  
 Response: 24132620  
 Conc: 203.15 ng/ml



#28 AR-1254-3

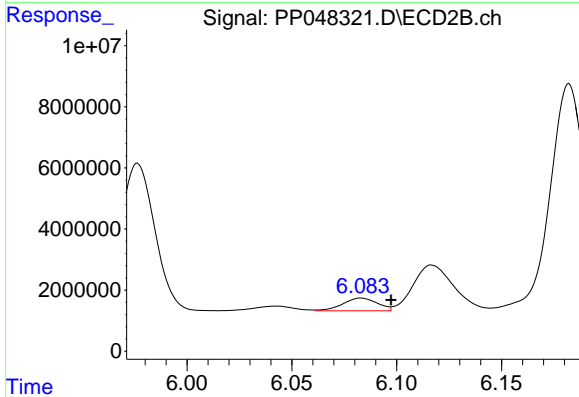
R.T.: 5.852 min  
 Delta R.T.: 0.004 min  
 Response: 39662433  
 Conc: 323.26 ng/ml



#29 AR-1254-4

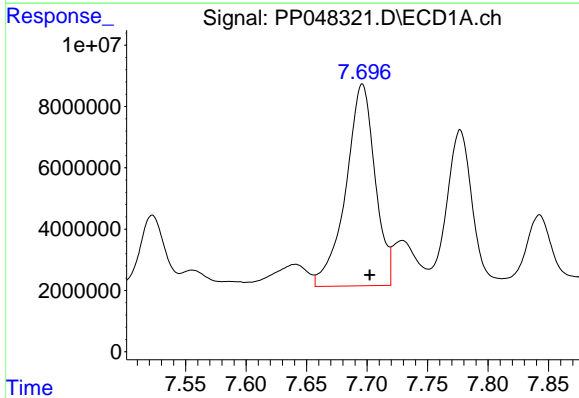
R.T.: 7.229 min  
 Delta R.T.: -0.008 min  
 Response: 1655372  
 Conc: 183.54 ng/ml

Instrument :  
 ECD\_P  
 ClientSampleId :



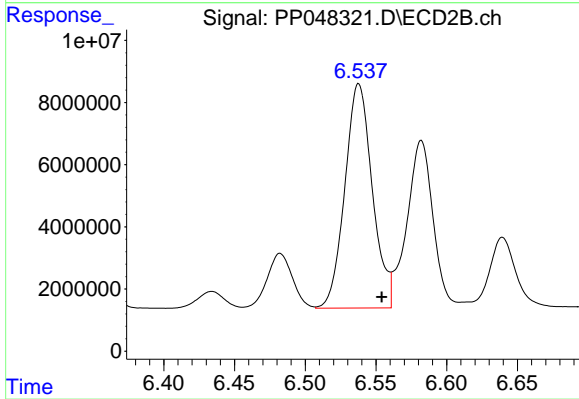
#29 AR-1254-4

R.T.: 6.083 min  
 Delta R.T.: -0.014 min  
 Response: 4770227  
 Conc: 63.53 ng/ml



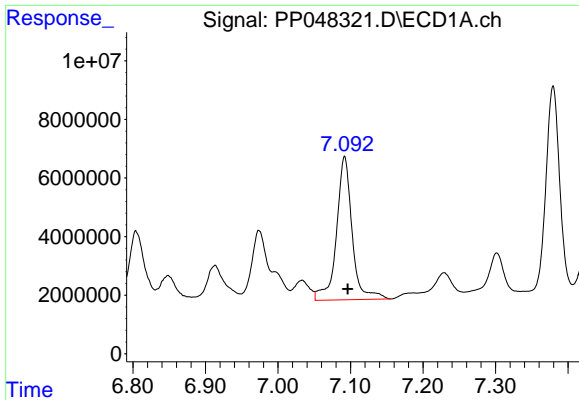
#30 AR-1254-5

R.T.: 7.696 min  
 Delta R.T.: -0.006 min  
 Response: 110592597  
 Conc: 1193.47 ng/ml



#30 AR-1254-5

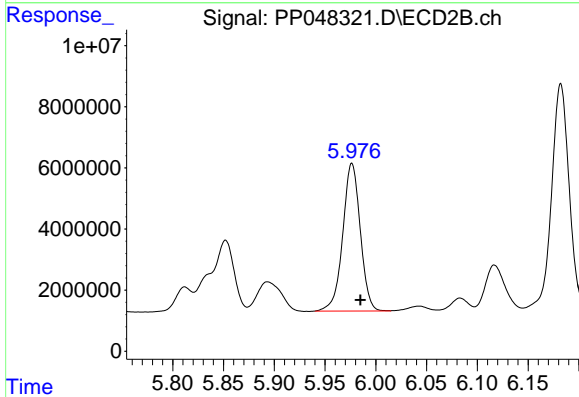
R.T.: 6.538 min  
 Delta R.T.: -0.016 min  
 Response: 97590464  
 Conc: 963.98 ng/ml



#31 AR-1260-1

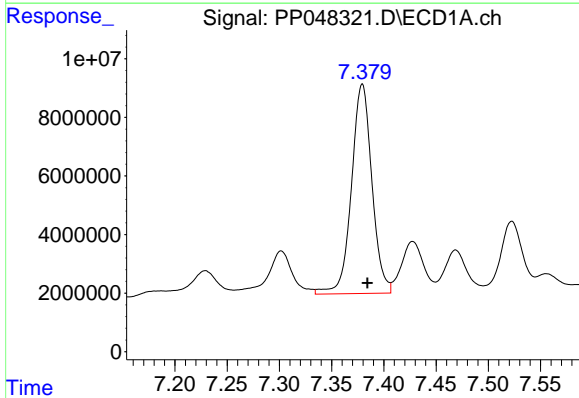
R.T.: 7.092 min  
 Delta R.T.: -0.004 min  
 Response: 73495588  
 Conc: 787.43 ng/ml

Instrument :  
 ECD\_P  
 ClientSampleId :



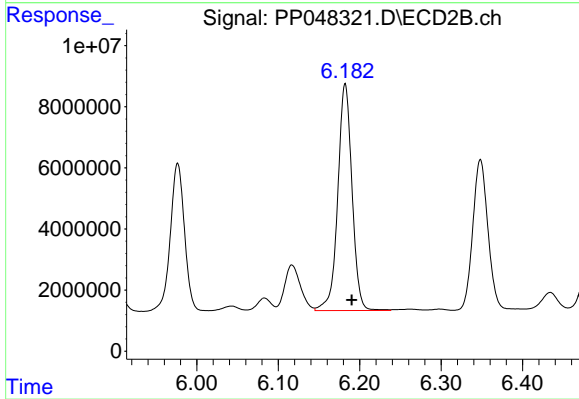
#31 AR-1260-1

R.T.: 5.976 min  
 Delta R.T.: -0.009 min  
 Response: 58119383  
 Conc: 678.94 ng/ml



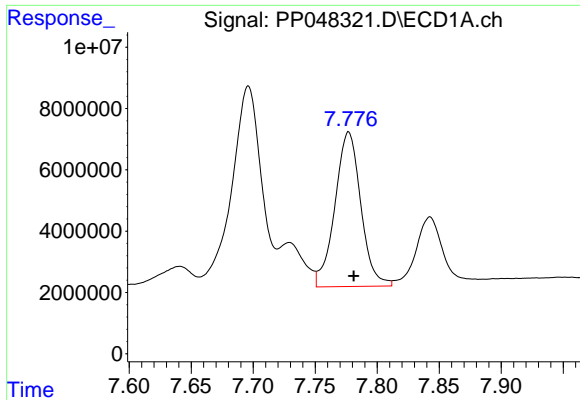
#32 AR-1260-2

R.T.: 7.379 min  
 Delta R.T.: -0.005 min  
 Response: 97663703  
 Conc: 873.67 ng/ml



#32 AR-1260-2

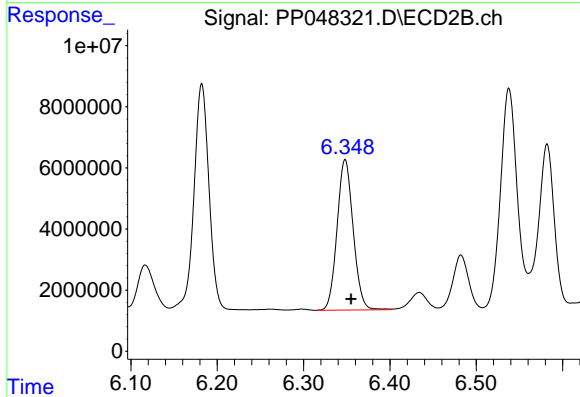
R.T.: 6.182 min  
 Delta R.T.: -0.008 min  
 Response: 90333889  
 Conc: 876.37 ng/ml



#33 AR-1260-3

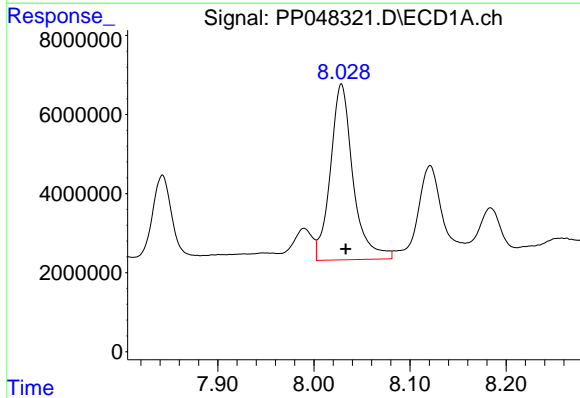
R.T.: 7.777 min  
 Delta R.T.: -0.004 min  
 Response: 73426855  
 Conc: 857.22 ng/ml

Instrument :  
 ECD\_P  
 ClientSampleId :



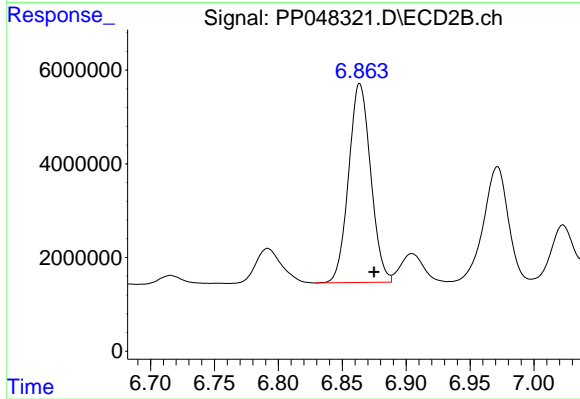
#33 AR-1260-3

R.T.: 6.348 min  
 Delta R.T.: -0.007 min  
 Response: 63761046  
 Conc: 643.90 ng/ml



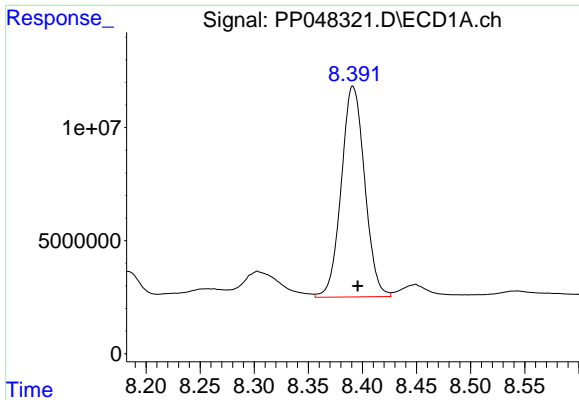
#34 AR-1260-4

R.T.: 8.029 min  
 Delta R.T.: -0.004 min  
 Response: 72810112  
 Conc: 701.74 ng/ml



#34 AR-1260-4

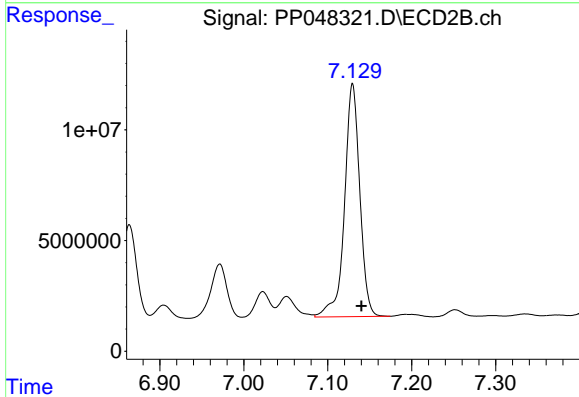
R.T.: 6.864 min  
 Delta R.T.: -0.011 min  
 Response: 51075617  
 Conc: 613.52 ng/ml



#35 AR-1260-5

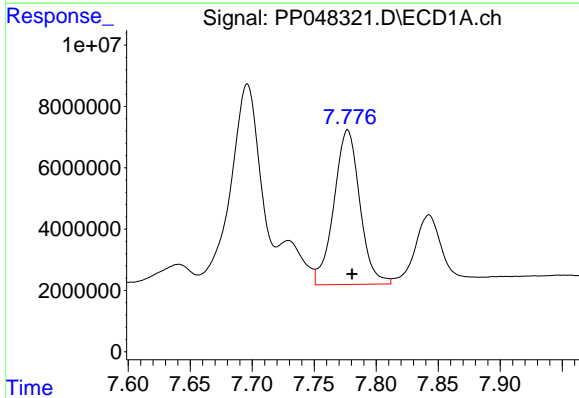
R.T.: 8.391 min  
Delta R.T.: -0.004 min  
Response: 140310153  
Conc: 679.94 ng/ml

Instrument :  
ECD\_P  
ClientSampleId :



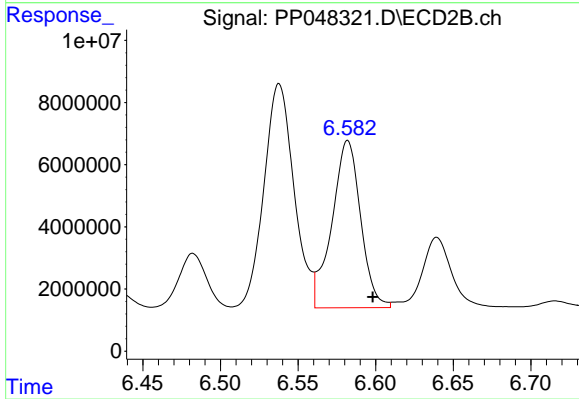
#35 AR-1260-5

R.T.: 7.130 min  
Delta R.T.: -0.010 min  
Response: 133035862  
Conc: 670.50 ng/ml



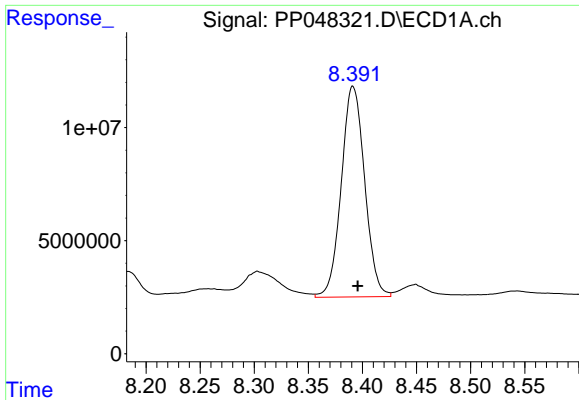
#36 AR-1262-1

R.T.: 7.777 min  
Delta R.T.: -0.003 min  
Response: 73426855  
Conc: 643.81 ng/ml



#36 AR-1262-1

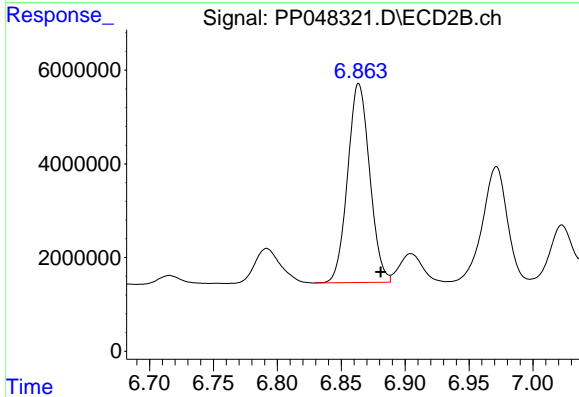
R.T.: 6.582 min  
Delta R.T.: -0.016 min  
Response: 69315398  
Conc: 641.56 ng/ml



#37 AR-1262-2

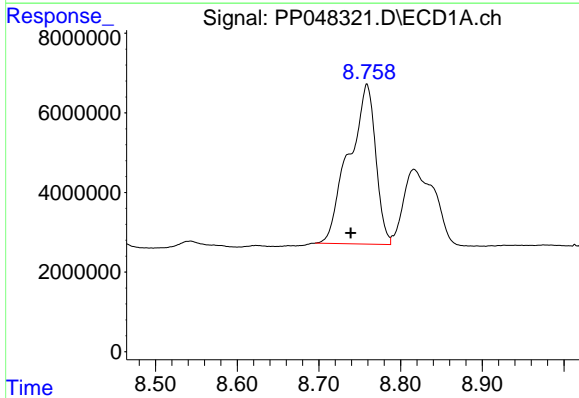
R.T.: 8.391 min  
 Delta R.T.: -0.005 min  
 Response: 140310153  
 Conc: 658.27 ng/ml

Instrument :  
 ECD\_P  
 ClientSampleId :



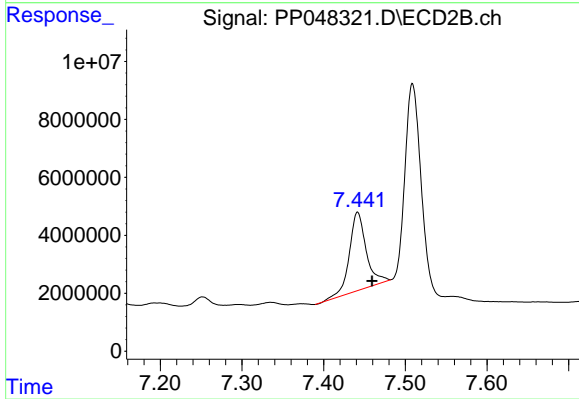
#37 AR-1262-2

R.T.: 6.864 min  
 Delta R.T.: -0.017 min  
 Response: 51075617  
 Conc: 516.10 ng/ml



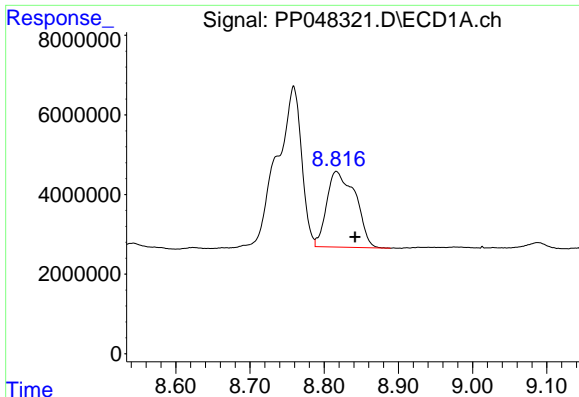
#38 AR-1262-3

R.T.: 8.759 min  
 Delta R.T.: 0.020 min  
 Response: 91571406  
 Conc: 982.59 ng/ml



#38 AR-1262-3

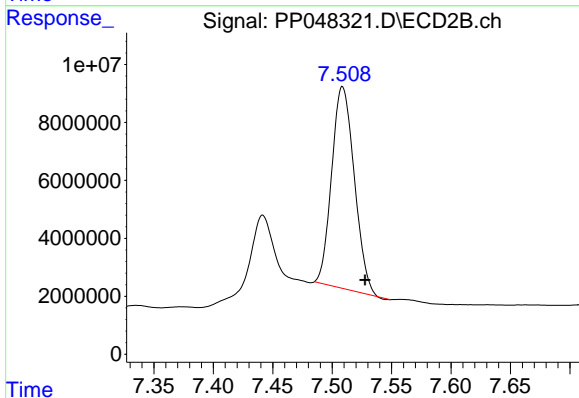
R.T.: 7.442 min  
 Delta R.T.: -0.017 min  
 Response: 38727711  
 Conc: 514.62 ng/ml



#39 AR-1262-4

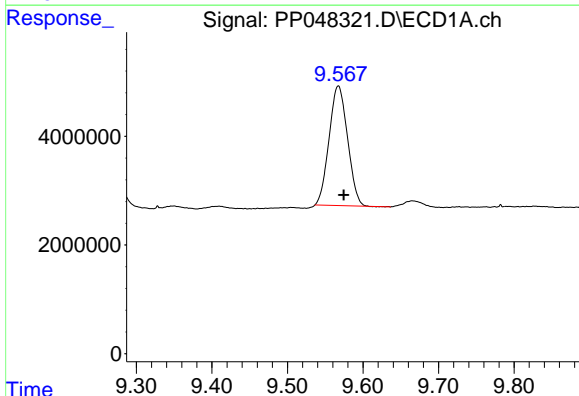
R.T.: 8.816 min  
Delta R.T.: -0.025 min  
Response: 51202209  
Conc: 861.14 ng/ml

Instrument :  
ECD\_P  
ClientSampleId :



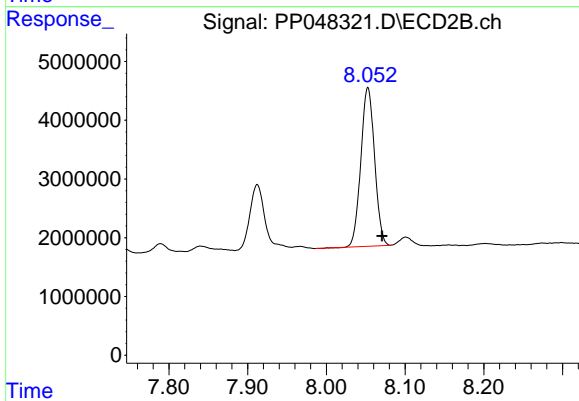
#39 AR-1262-4

R.T.: 7.509 min  
Delta R.T.: -0.019 min  
Response: 92306687  
Conc: 633.77 ng/ml



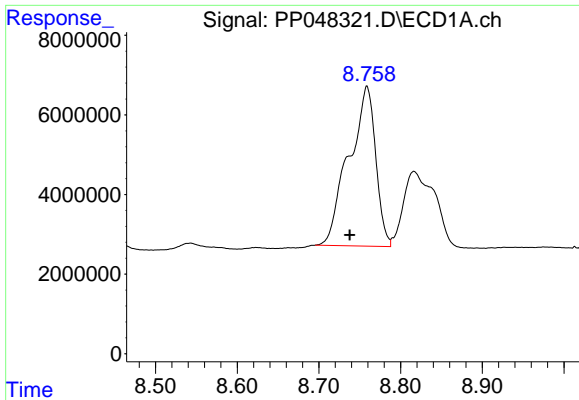
#40 AR-1262-5

R.T.: 9.567 min  
Delta R.T.: -0.007 min  
Response: 37413642  
Conc: 472.71 ng/ml



#40 AR-1262-5

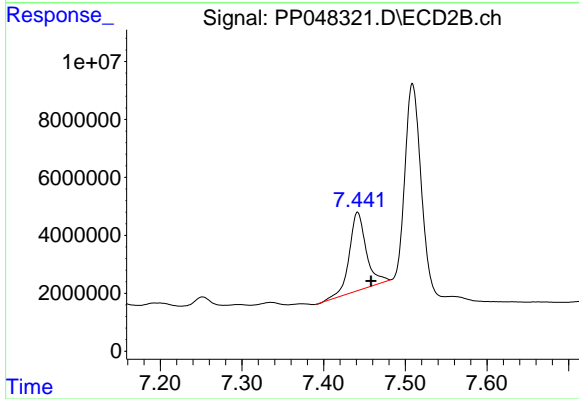
R.T.: 8.053 min  
Delta R.T.: -0.018 min  
Response: 32848001  
Conc: 486.69 ng/ml



#41 AR-1268-1

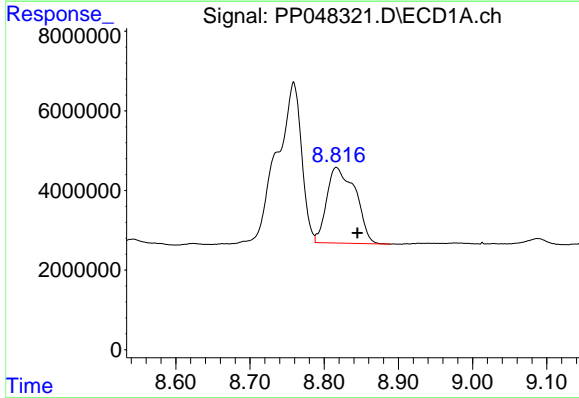
R.T.: 8.759 min  
 Delta R.T.: 0.021 min  
 Response: 91571406  
 Conc: 346.16 ng/ml

Instrument :  
 ECD\_P  
 ClientSampleId :



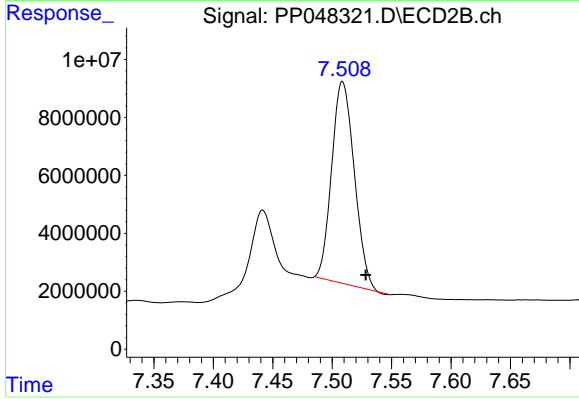
#41 AR-1268-1

R.T.: 7.442 min  
 Delta R.T.: -0.017 min  
 Response: 38727711  
 Conc: 165.82 ng/ml



#42 AR-1268-2

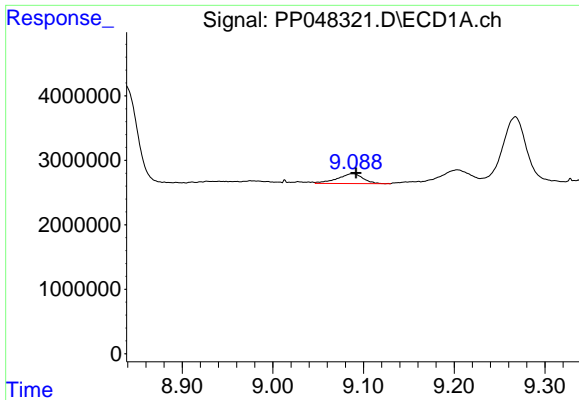
R.T.: 8.816 min  
 Delta R.T.: -0.028 min  
 Response: 51202209  
 Conc: 212.02 ng/ml



#42 AR-1268-2

R.T.: 7.509 min  
 Delta R.T.: -0.019 min  
 Response: 92306687  
 Conc: 426.63 ng/ml

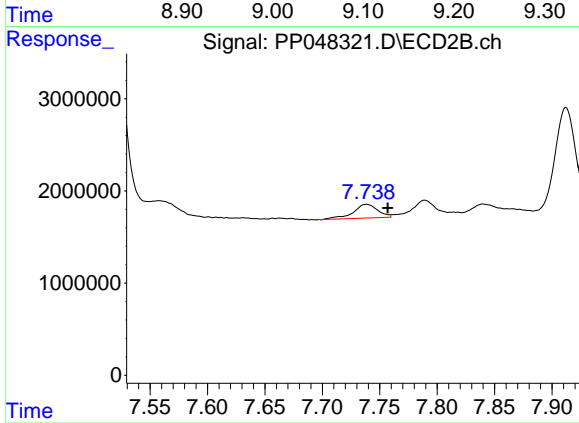




#43 AR-1268-3

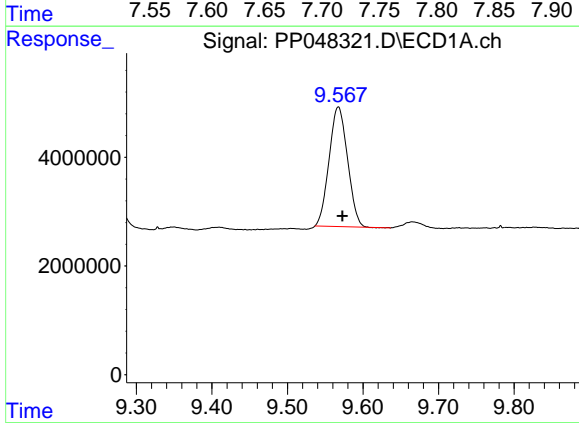
R.T.: 9.088 min  
 Delta R.T.: -0.004 min  
 Response: 3030739  
 Conc: 14.74 ng/ml

Instrument :  
 ECD\_P  
 ClientSampleId :



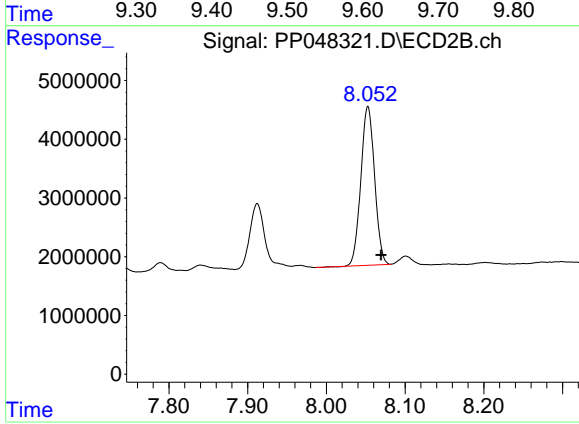
#43 AR-1268-3

R.T.: 7.738 min  
 Delta R.T.: -0.018 min  
 Response: 2204353  
 Conc: 11.86 ng/ml



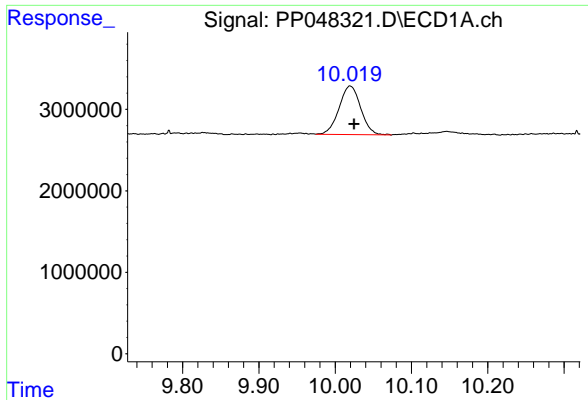
#44 AR-1268-4

R.T.: 9.567 min  
 Delta R.T.: -0.005 min  
 Response: 37413642  
 Conc: 416.50 ng/ml



#44 AR-1268-4

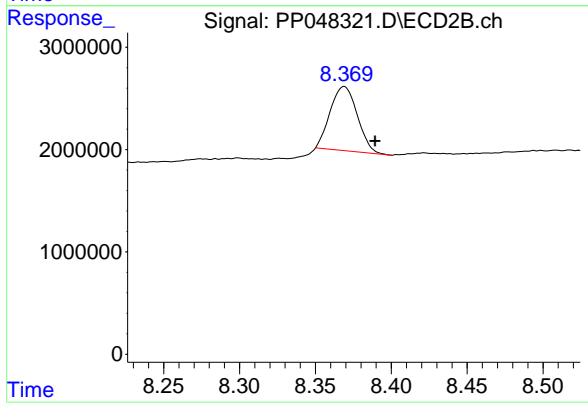
R.T.: 8.053 min  
 Delta R.T.: -0.017 min  
 Response: 32848001  
 Conc: 399.85 ng/ml



#45 AR-1268-5

R.T.: 10.020 min  
Delta R.T.: -0.005 min  
Response: 11744935  
Conc: 16.63 ng/ml

Instrument :  
ECD\_P  
ClientSampleId :



#45 AR-1268-5

R.T.: 8.369 min  
Delta R.T.: -0.020 min  
Response: 7783379  
Conc: 12.84 ng/ml