

Data Path : Z:\pestpcbsrv\HPCHEM1\ECD_P\Data\PP060222\
 Data File : PP048332.D
 Signal(s) : Signal #1: ECD1A.ch Signal #2: ECD2B.ch
 Acq On : 02 Jun 2022 17:36
 Operator : YP\AJ
 Sample : N2987-05MS
 Misc :
 ALS Vial : 31 Sample Multiplier: 1

Instrument :
 ECD_P
 ClientSampleId :

Integration File signal 1: autoint1.e
 Integration File signal 2: autoint2.e
 Quant Time: Jun 03 02:28:09 2022
 Quant Method : Z:\pestpcbsrv\HPCHEM1\ECD_P\methods\PP052722.M
 Quant Title : GC EXTRACTABLES
 QLast Update : Fri May 27 23:53:39 2022
 Response via : Initial Calibration
 Integrator: ChemStation

Volume Inj. : 2 µl
 Signal #1 Phase : ZB-MR1 Signal #2 Phase: ZB-MR2
 Signal #1 Info : 30Mx0.32mmx 0.50µ Signal #2 Info : 30M x 0.32mm x 0.25µm

Compound	RT#1	RT#2	Resp#1	Resp#2	ng/ml	ng/ml

System Monitoring Compounds						
1) SA Tetrachlo...	4.034	3.214	54655213	41867473	23.339	21.244
2) SA Decachlor...	10.384	8.643	33305982	27453183	17.136	16.983
Target Compounds						
3) L1 AR-1016-1	5.323	4.394	43074085	47754269	510.789	710.023 #
4) L1 AR-1016-2	5.346	4.394	61723790	47754269	521.685	512.766
5) L1 AR-1016-3	5.413	4.580	38879460	25674454	575.346	501.186
6) L1 AR-1016-4	5.522	4.629	31785257	19936657	515.653	523.260
7) L1 AR-1016-5	5.847	4.856	30572596	25376427	542.749	531.493
8) L2 AR-1221-1	4.268	3.446	6736442	3295212	254.818	158.979 #
9) L2 AR-1221-2	4.365	3.536	5807616	4717093	283.561	307.110
10) L2 AR-1221-3	4.448	3.618	23048032	18959812	368.135	382.295
11) L3 AR-1232-1	4.448	3.618	23048032	18959812	443.736	438.974
12) L3 AR-1232-2	5.025	4.394	33626138	47754269	1400.628	1185.247
13) L3 AR-1232-3	5.346	4.580	61723790	25674454	1243.876	1244.466
14) L3 AR-1232-4	5.522	4.673	31785257	24795800	1329.655	1428.798
15) L3 AR-1232-5	5.623	4.856	27306240	25376427	1671.402	1295.528
16) L4 AR-1242-1	5.323	4.394	43074085	47754269	770.258	1001.411 #
17) L4 AR-1242-2	5.346	4.394	61723790	47754269	750.493	718.693
18) L4 AR-1242-3	5.413	4.580	38879460	25674454	792.014	740.163
19) L4 AR-1242-4	5.522	4.673	31785257	24795800	803.214	772.004
20) L4 AR-1242-5	6.337	5.237	5563337	20095335	130.628	481.185 #
21) L5 AR-1248-1	5.323	4.394	43074085	47754269	998.600	1304.758 #
22) L5 AR-1248-2	5.623	4.629	27306240	19936657	477.475	418.631
23) L5 AR-1248-3	5.847	4.673	30572596	24795800	451.692	500.514
24) L5 AR-1248-4	6.295	4.856	5302417	25376427	68.182	435.578 #
25) L5 AR-1248-5	6.337	5.280	5563337	2992421	73.138	49.612 #
26) L6 AR-1254-1	6.263	5.237	22180283	20095335	305.530	229.230
27) L6 AR-1254-2	6.505	5.398	25599968	19071741	215.148	253.830
28) L6 AR-1254-3	6.913	5.852	11995689	33252004	100.979	271.013 #
29) L6 AR-1254-4	7.231	6.083	9053841	3681259	100.376	49.026 #
30) L6 AR-1254-5	7.696	6.538f	71338001	65233843	769.851	644.369
31) L7 AR-1260-1	7.092	5.976	51141297	47040663	547.925	549.518
32) L7 AR-1260-2	7.380	6.182	57999182	55647227	518.842	539.858
33) L7 AR-1260-3	7.777	6.348	39158848	52397539	457.160	529.148
34) L7 AR-1260-4	8.029	6.864	48942586	36713423	471.704	440.999
35) L7 AR-1260-5	8.392	7.130	86073166	84381772	417.108	425.285
36) L8 AR-1262-1	7.777	6.581f	39158848	39106208	343.349	361.952
37) L8 AR-1262-2	8.392	6.864f	86073166	36713423	403.817	370.977
38) L8 AR-1262-3	8.758f	7.441f	54510543	16040848	584.917	213.154 #
39) L8 AR-1262-4	8.816f	7.509f	29130916	57823960	489.938	397.016
40) L8 AR-1262-5	9.567	8.052f	18749669	16803522	236.895	248.967
41) L9 AR-1268-1	8.758f	7.441f	54510543	16040848	206.062	68.684 #

Data Path : Z:\pestpcbsrv\HPCHEM1\ECD_P\Data\PP060222\
 Data File : PP048332.D
 Signal(s) : Signal #1: ECD1A.ch Signal #2: ECD2B.ch
 Acq On : 02 Jun 2022 17:36
 Operator : YP\AJ
 Sample : N2987-05MS
 Misc :
 ALS Vial : 31 Sample Multiplier: 1

Instrument :
 ECD_P
 ClientSampleId :

Integration File signal 1: autoint1.e
 Integration File signal 2: autoint2.e
 Quant Time: Jun 03 02:28:09 2022
 Quant Method : Z:\pestpcbsrv\HPCHEM1\ECD_P\methods\PP052722.M
 Quant Title : GC EXTRACTABLES
 QLast Update : Fri May 27 23:53:39 2022
 Response via : Initial Calibration
 Integrator: ChemStation

Volume Inj. : 2 µl
 Signal #1 Phase : ZB-MR1 Signal #2 Phase: ZB-MR2
 Signal #1 Info : 30Mx0.32mmx 0.50µ Signal #2 Info : 30M x 0.32mm x 0.25µm

	Compound	RT#1	RT#2	Resp#1	Resp#2	ng/ml	ng/ml
42)	L9 AR-1268-2	8.816f	7.509f	29130916	57823960	120.627	267.252 #
43)	L9 AR-1268-3	9.087	7.739f	1646317	1327474	8.008	7.142
44)	L9 AR-1268-4	9.567	8.052f	18749669	16803522	208.725	204.546
45)	L9 AR-1268-5	10.019	8.369f	6432928	4366942	9.111	7.207

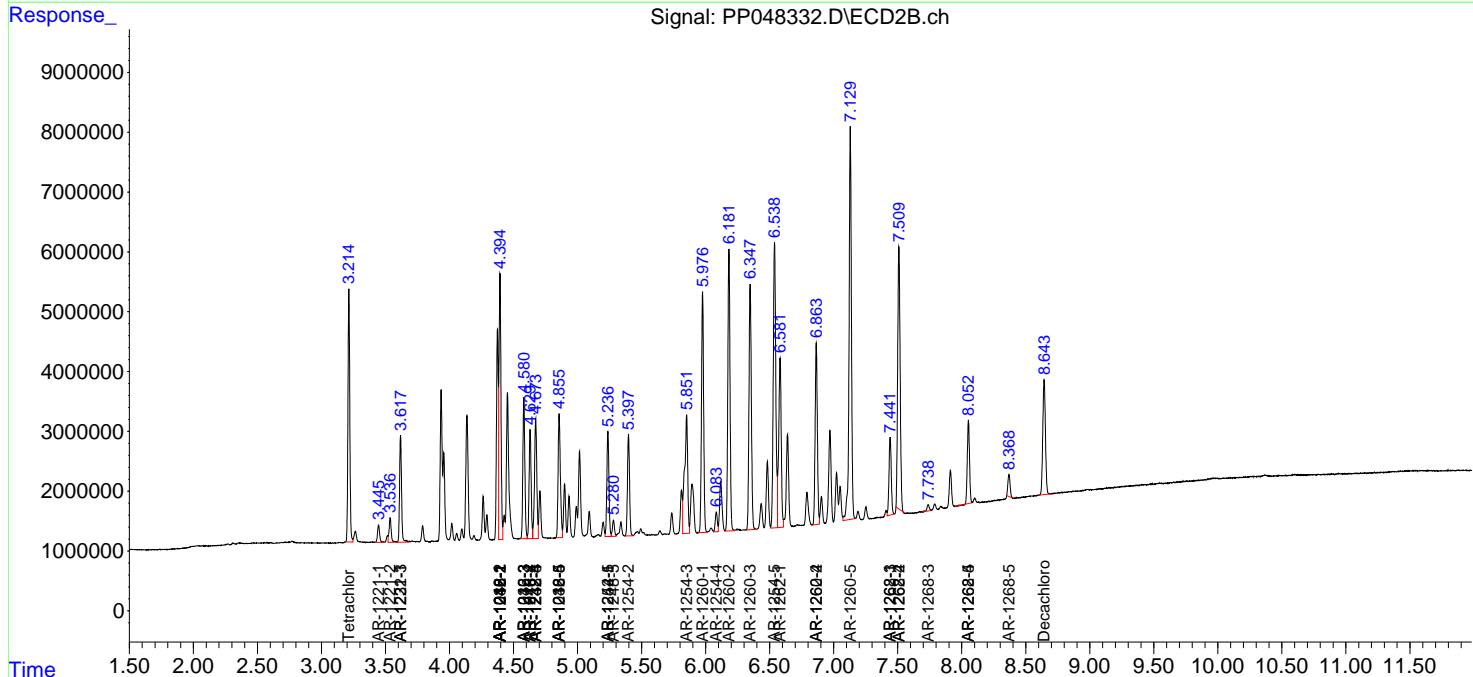
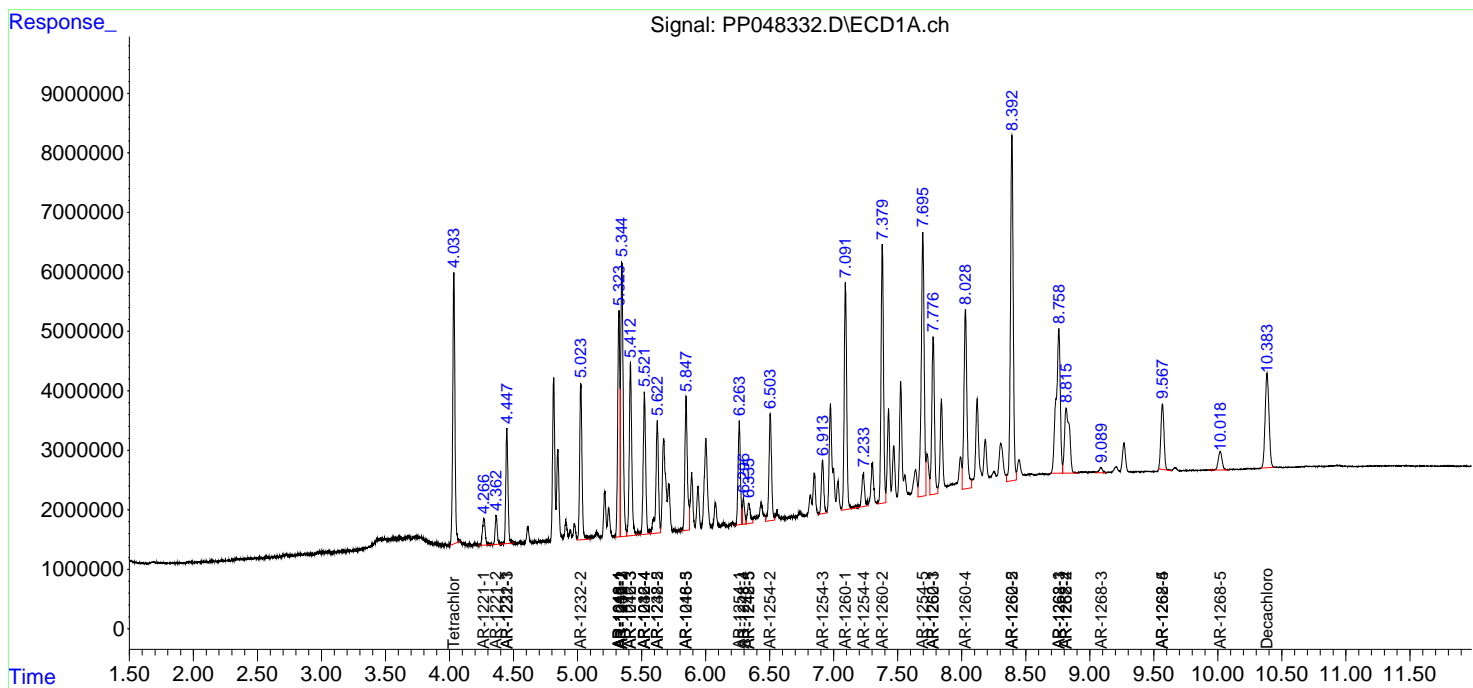
(f)=RT Delta > 1/2 Window (#)=Amounts differ by > 25% (m)=manual int.

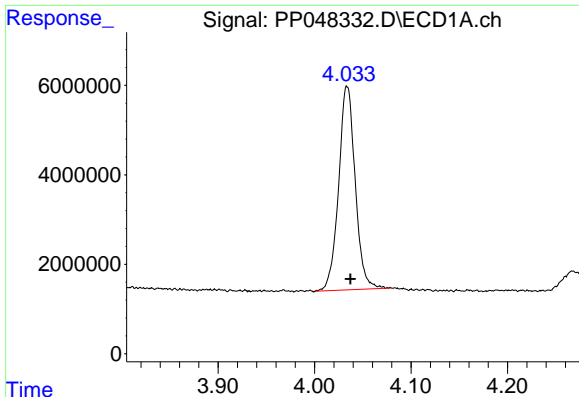
Data Path : Z:\pestpcbsrv\HPCHEM1\ECD_P\Data\PP060222\
 Data File : PP048332.D
 Signal(s) : Signal #1: ECD1A.ch Signal #2: ECD2B.ch
 Acq On : 02 Jun 2022 17:36
 Operator : YP\AJ
 Sample : N2987-05MS
 Misc :
 ALS Vial : 31 Sample Multiplier: 1

Instrument :
 ECD_P
 ClientSampleId :

Integration File signal 1: autoint1.e
 Integration File signal 2: autoint2.e
 Quant Time: Jun 03 02:28:09 2022
 Quant Method : Z:\pestpcbsrv\HPCHEM1\ECD_P\methods\PP052722.M
 Quant Title : GC EXTRACTABLES
 QLast Update : Fri May 27 23:53:39 2022
 Response via : Initial Calibration
 Integrator: ChemStation

Volume Inj. : 2 µl
 Signal #1 Phase : ZB-MR1 Signal #2 Phase: ZB-MR2
 Signal #1 Info : 30Mx0.32mmx 0.50µ Signal #2 Info : 30M x 0.32mm x 0.25µm

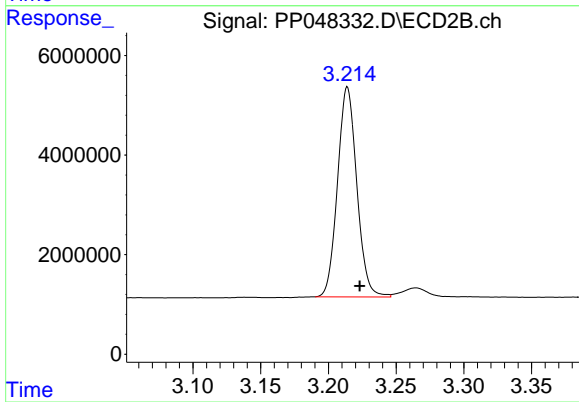




#1 Tetrachloro-m-xylene

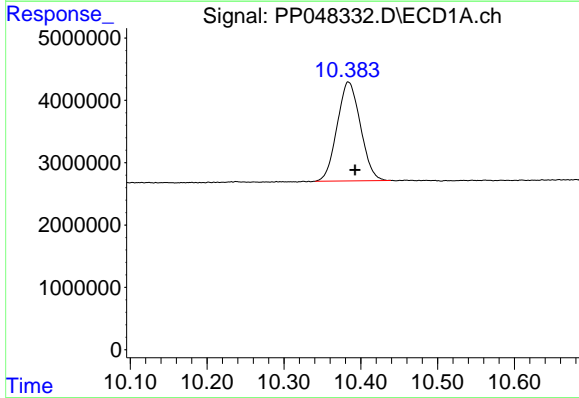
R.T.: 4.034 min
 Delta R.T.: -0.003 min
 Response: 54655213
 Conc: 23.34 ng/ml

Instrument :
 ECD_P
 ClientSampleId :



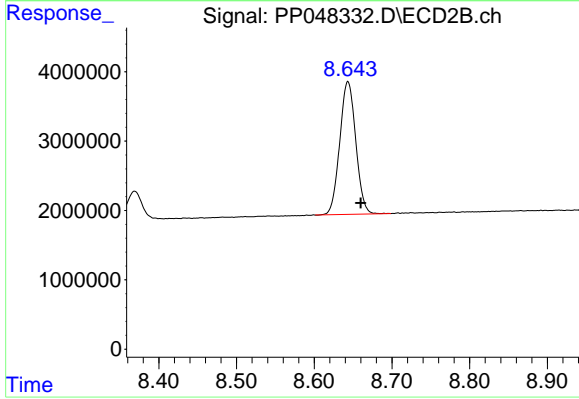
#1 Tetrachloro-m-xylene

R.T.: 3.214 min
 Delta R.T.: -0.009 min
 Response: 41867473
 Conc: 21.24 ng/ml



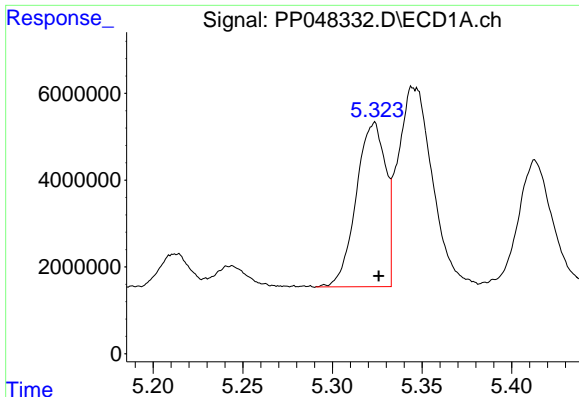
#2 Decachlorobiphenyl

R.T.: 10.384 min
 Delta R.T.: -0.008 min
 Response: 33305982
 Conc: 17.14 ng/ml



#2 Decachlorobiphenyl

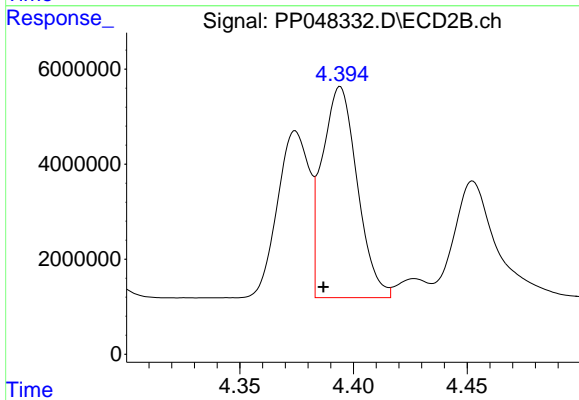
R.T.: 8.643 min
 Delta R.T.: -0.017 min
 Response: 27453183
 Conc: 16.98 ng/ml



#3 AR-1016-1

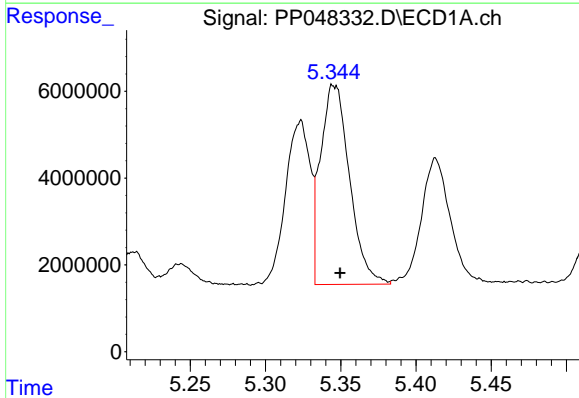
R.T.: 5.323 min
 Delta R.T.: -0.003 min
 Response: 43074085
 Conc: 510.79 ng/ml

Instrument :
 ECD_P
 ClientSampleId :



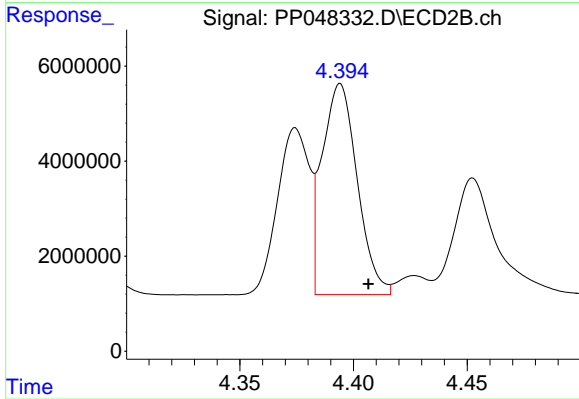
#3 AR-1016-1

R.T.: 4.394 min
 Delta R.T.: 0.007 min
 Response: 47754269
 Conc: 710.02 ng/ml



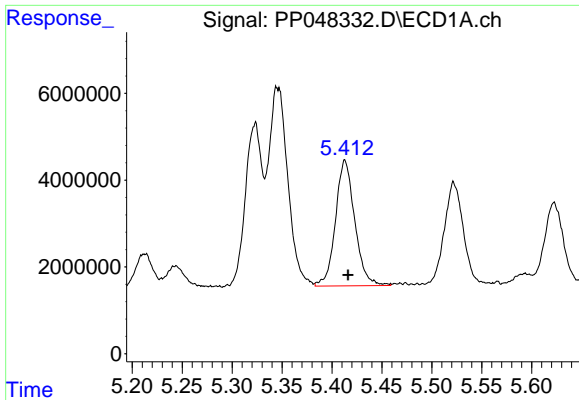
#4 AR-1016-2

R.T.: 5.346 min
 Delta R.T.: -0.004 min
 Response: 61723790
 Conc: 521.68 ng/ml



#4 AR-1016-2

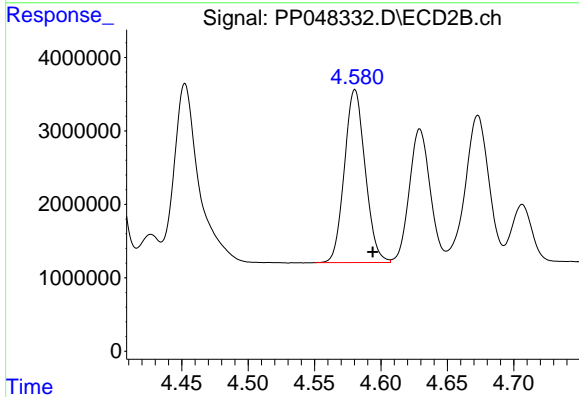
R.T.: 4.394 min
 Delta R.T.: -0.012 min
 Response: 47754269
 Conc: 512.77 ng/ml



#5 AR-1016-3

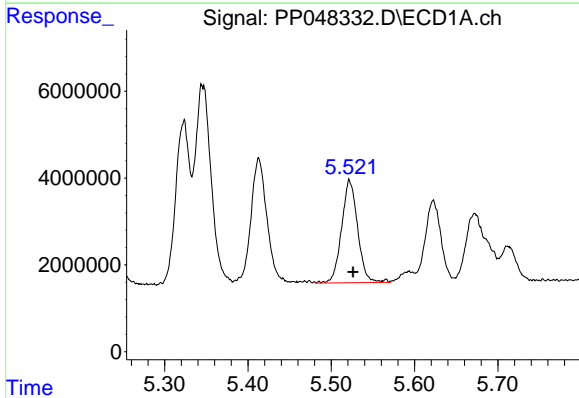
R.T.: 5.413 min
 Delta R.T.: -0.003 min
 Response: 38879460
 Conc: 575.35 ng/ml

Instrument :
 ECD_P
 ClientSampleId :



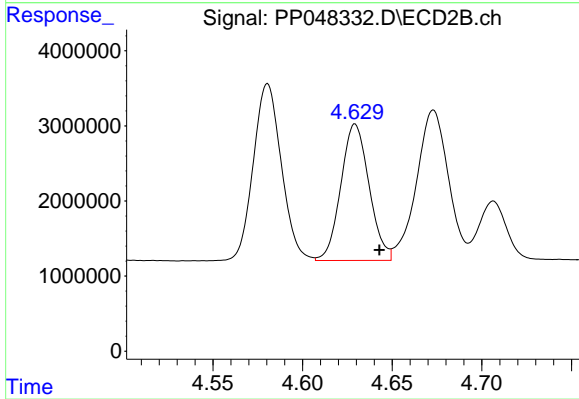
#5 AR-1016-3

R.T.: 4.580 min
 Delta R.T.: -0.014 min
 Response: 25674454
 Conc: 501.19 ng/ml



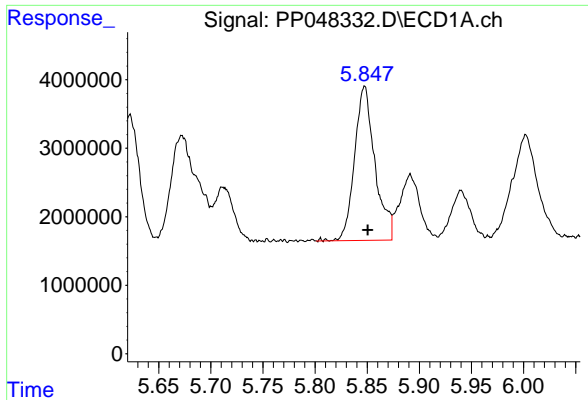
#6 AR-1016-4

R.T.: 5.522 min
 Delta R.T.: -0.004 min
 Response: 31785257
 Conc: 515.65 ng/ml



#6 AR-1016-4

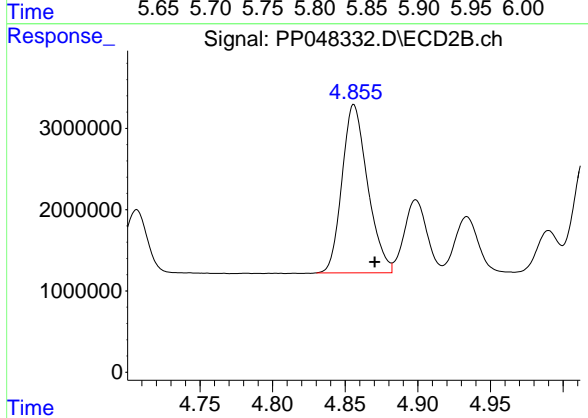
R.T.: 4.629 min
 Delta R.T.: -0.013 min
 Response: 19936657
 Conc: 523.26 ng/ml



#7 AR-1016-5

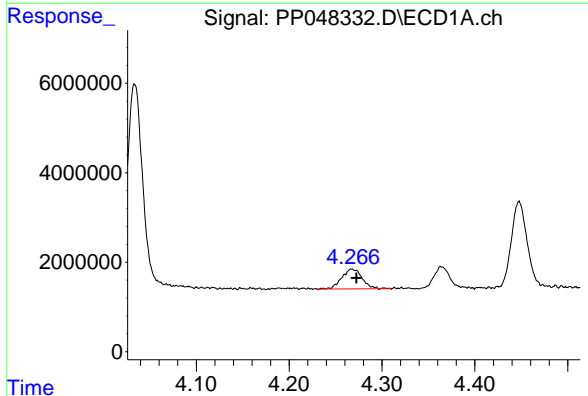
R.T.: 5.847 min
 Delta R.T.: -0.003 min
 Response: 30572596
 Conc: 542.75 ng/ml

Instrument :
 ECD_P
 ClientSampleId :



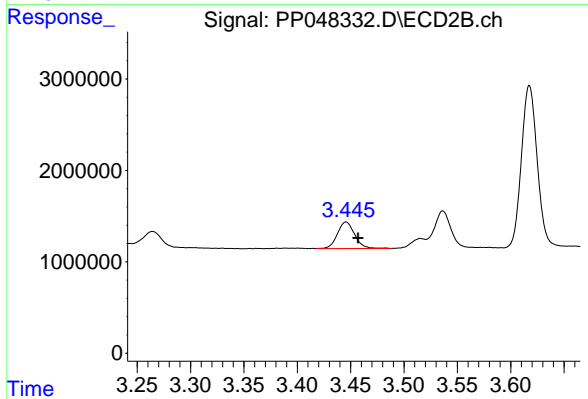
#7 AR-1016-5

R.T.: 4.856 min
 Delta R.T.: -0.014 min
 Response: 25376427
 Conc: 531.49 ng/ml



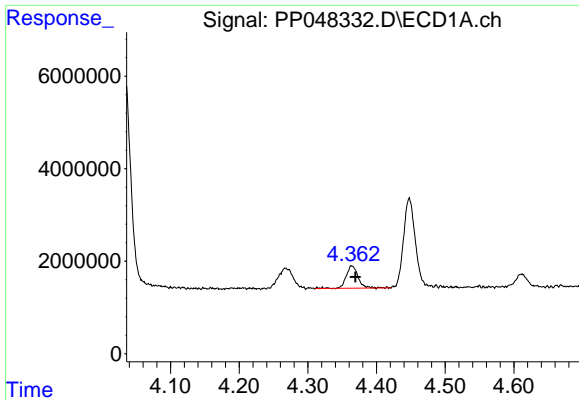
#8 AR-1221-1

R.T.: 4.268 min
 Delta R.T.: -0.004 min
 Response: 6736442
 Conc: 254.82 ng/ml



#8 AR-1221-1

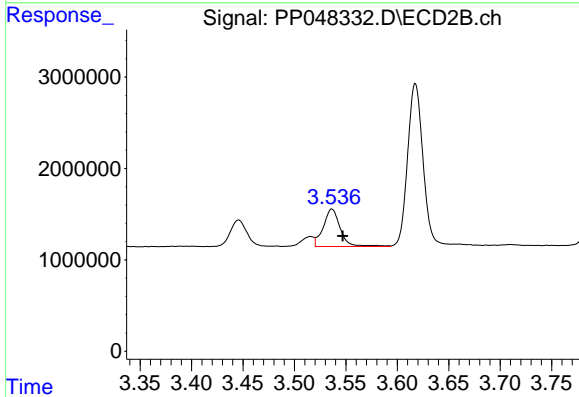
R.T.: 3.446 min
 Delta R.T.: -0.011 min
 Response: 3295212
 Conc: 158.98 ng/ml



#9 AR-1221-2

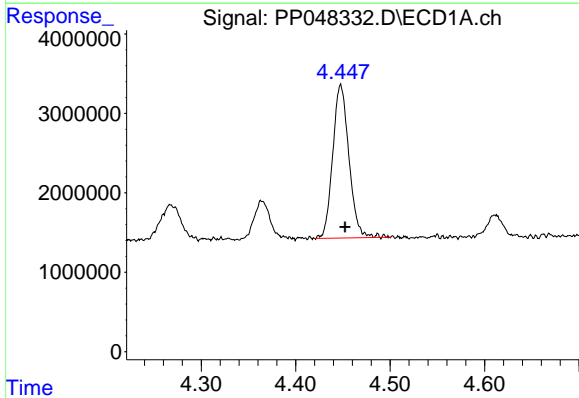
R.T.: 4.365 min
Delta R.T.: -0.004 min
Response: 5807616
Conc: 283.56 ng/ml

Instrument :
ECD_P
ClientSampleId :



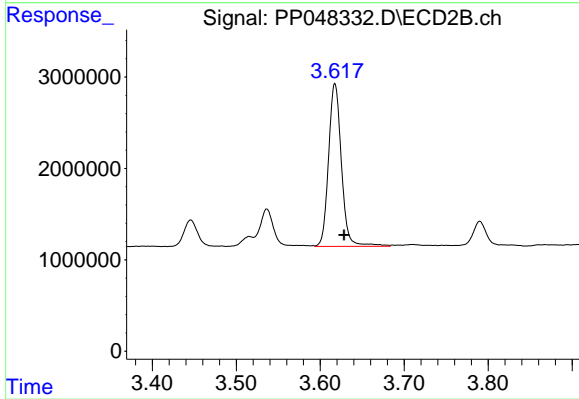
#9 AR-1221-2

R.T.: 3.536 min
Delta R.T.: -0.011 min
Response: 4717093
Conc: 307.11 ng/ml



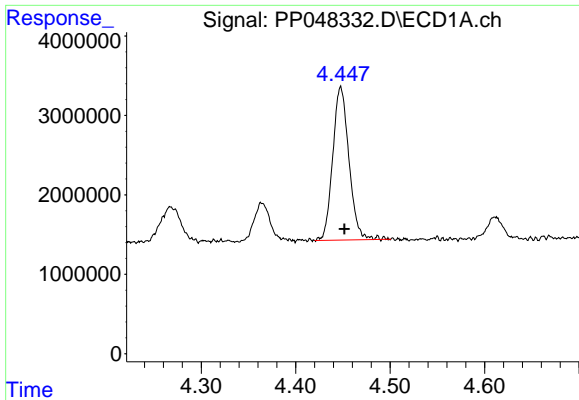
#10 AR-1221-3

R.T.: 4.448 min
Delta R.T.: -0.005 min
Response: 23048032
Conc: 368.13 ng/ml



#10 AR-1221-3

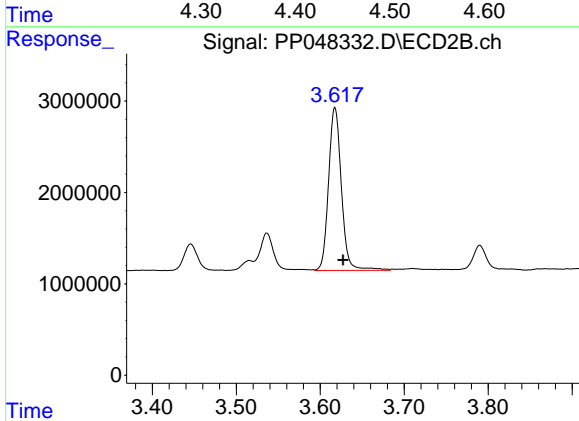
R.T.: 3.618 min
Delta R.T.: -0.011 min
Response: 18959812
Conc: 382.30 ng/ml



#11 AR-1232-1

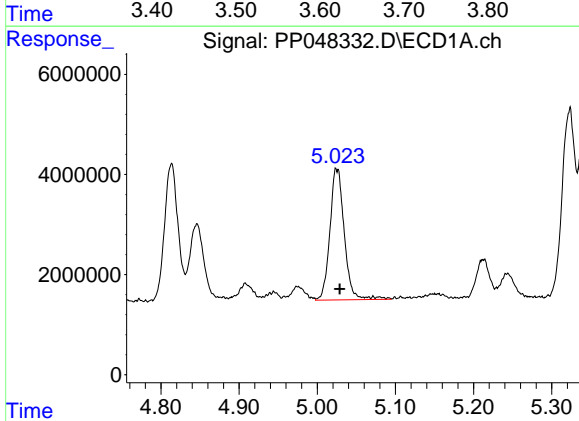
R.T.: 4.448 min
 Delta R.T.: -0.004 min
 Response: 23048032
 Conc: 443.74 ng/ml

Instrument :
 ECD_P
 ClientSampleId :



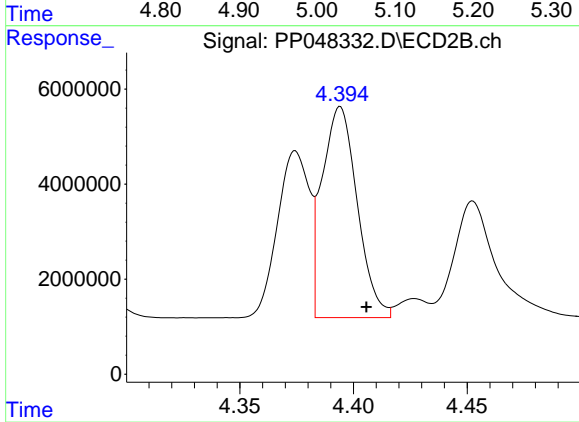
#11 AR-1232-1

R.T.: 3.618 min
 Delta R.T.: -0.010 min
 Response: 18959812
 Conc: 438.97 ng/ml



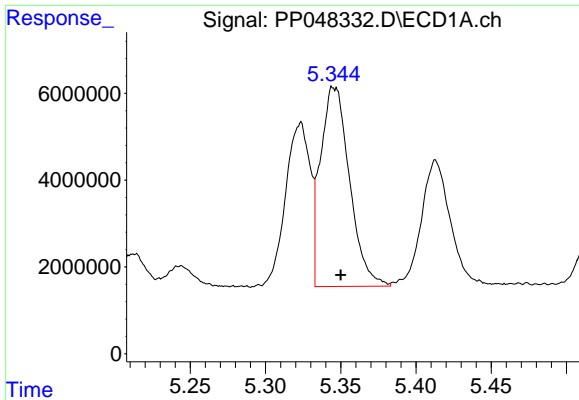
#12 AR-1232-2

R.T.: 5.025 min
 Delta R.T.: -0.004 min
 Response: 33626138
 Conc: 1400.63 ng/ml



#12 AR-1232-2

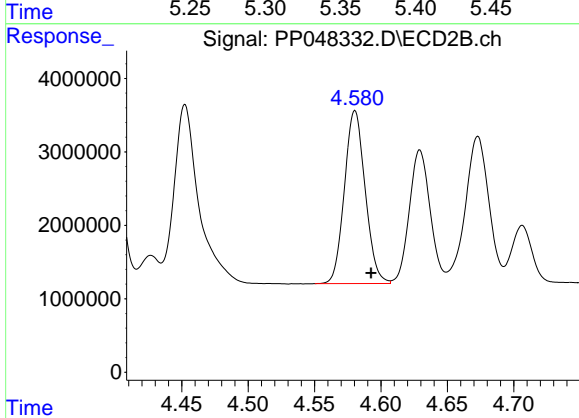
R.T.: 4.394 min
 Delta R.T.: -0.012 min
 Response: 47754269
 Conc: 1185.25 ng/ml



#13 AR-1232-3

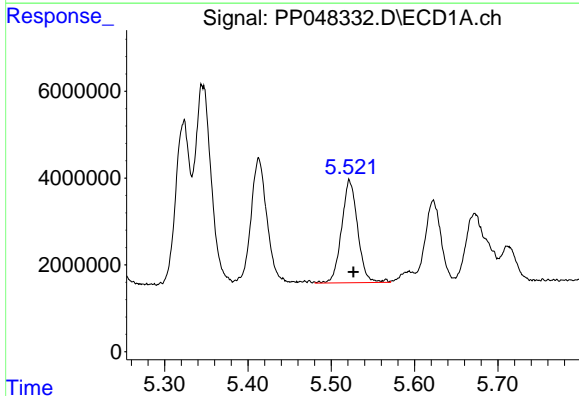
R.T.: 5.346 min
 Delta R.T.: -0.004 min
 Response: 61723790
 Conc: 1243.88 ng/m

Instrument :
 ECD_P
 ClientSampleId :



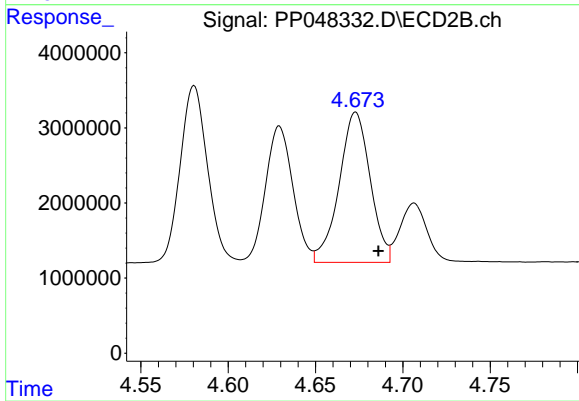
#13 AR-1232-3

R.T.: 4.580 min
 Delta R.T.: -0.012 min
 Response: 25674454
 Conc: 1244.47 ng/ml



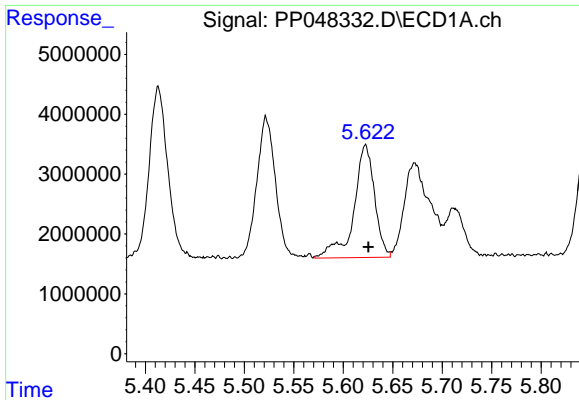
#14 AR-1232-4

R.T.: 5.522 min
 Delta R.T.: -0.004 min
 Response: 31785257
 Conc: 1329.65 ng/ml



#14 AR-1232-4

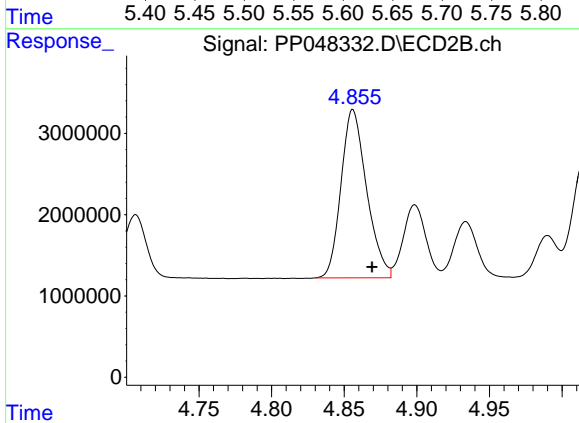
R.T.: 4.673 min
 Delta R.T.: -0.013 min
 Response: 24795800
 Conc: 1428.80 ng/ml



#15 AR-1232-5

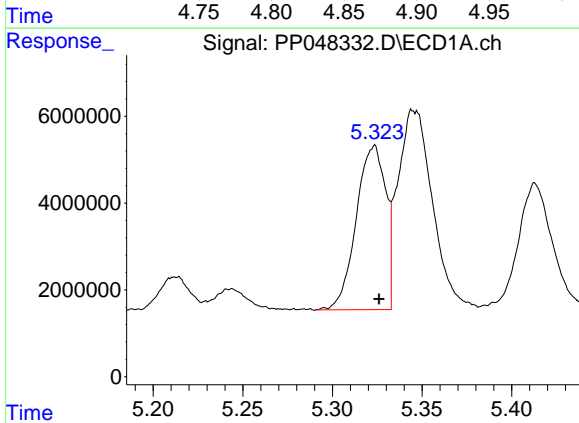
R.T.: 5.623 min
 Delta R.T.: -0.003 min
 Response: 27306240
 Conc: 1671.40 ng/ml

Instrument :
 ECD_P
 ClientSampleId :



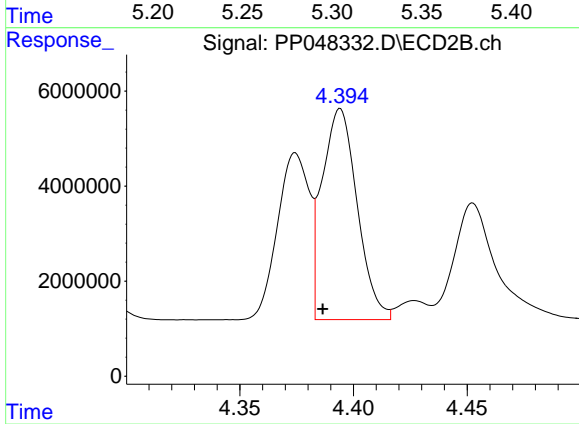
#15 AR-1232-5

R.T.: 4.856 min
 Delta R.T.: -0.013 min
 Response: 25376427
 Conc: 1295.53 ng/ml



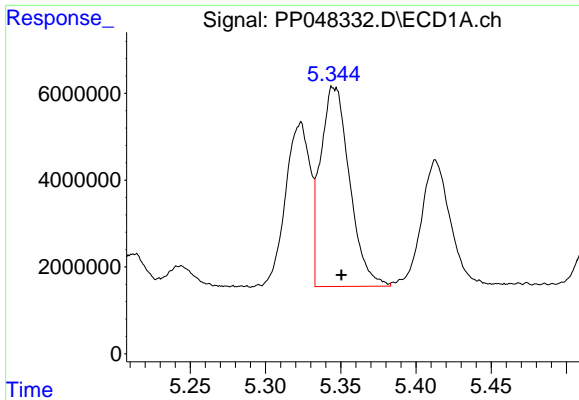
#16 AR-1242-1

R.T.: 5.323 min
 Delta R.T.: -0.003 min
 Response: 43074085
 Conc: 770.26 ng/ml



#16 AR-1242-1

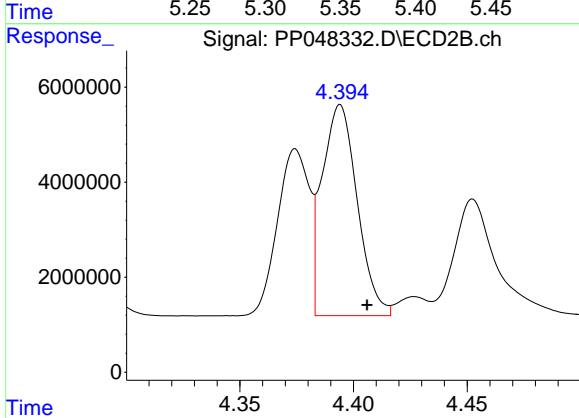
R.T.: 4.394 min
 Delta R.T.: 0.008 min
 Response: 47754269
 Conc: 1001.41 ng/ml



#17 AR-1242-2

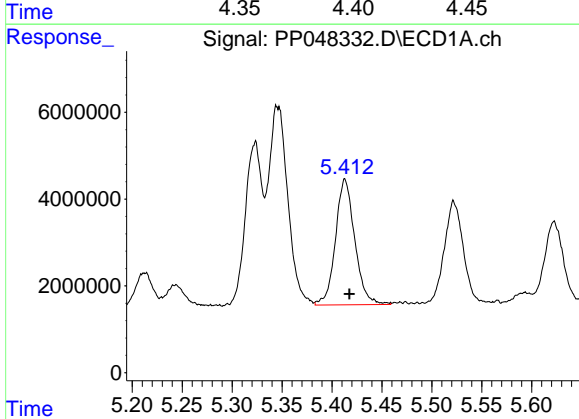
R.T.: 5.346 min
 Delta R.T.: -0.005 min
 Response: 61723790
 Conc: 750.49 ng/ml

Instrument :
 ECD_P
 ClientSampleId :



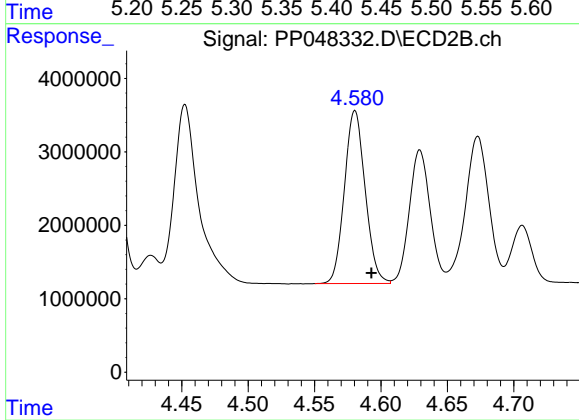
#17 AR-1242-2

R.T.: 4.394 min
 Delta R.T.: -0.012 min
 Response: 47754269
 Conc: 718.69 ng/ml



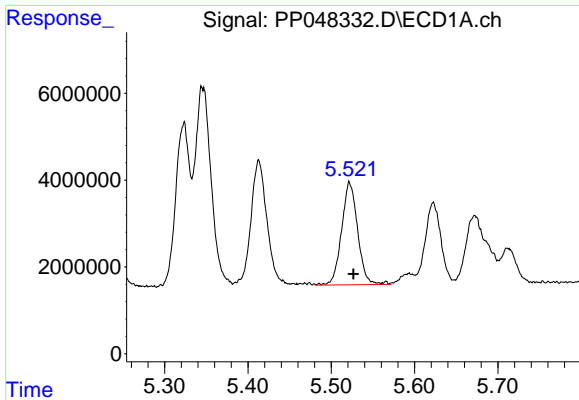
#18 AR-1242-3

R.T.: 5.413 min
 Delta R.T.: -0.004 min
 Response: 38879460
 Conc: 792.01 ng/ml



#18 AR-1242-3

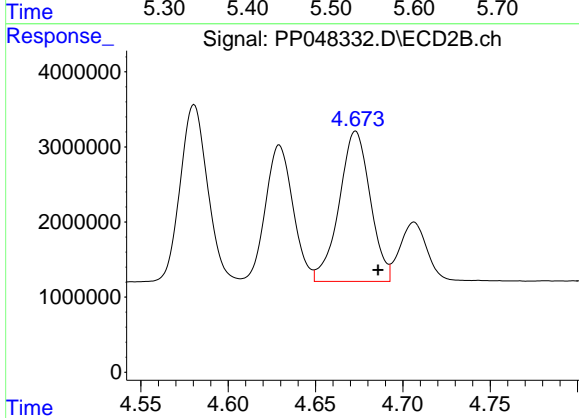
R.T.: 4.580 min
 Delta R.T.: -0.012 min
 Response: 25674454
 Conc: 740.16 ng/ml



#19 AR-1242-4

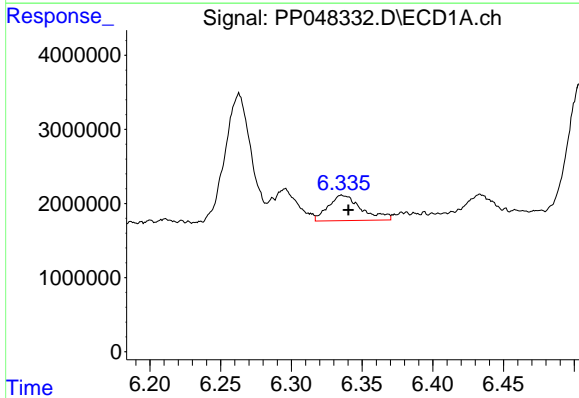
R.T.: 5.522 min
 Delta R.T.: -0.004 min
 Response: 31785257
 Conc: 803.21 ng/ml

Instrument :
 ECD_P
 ClientSampleId :



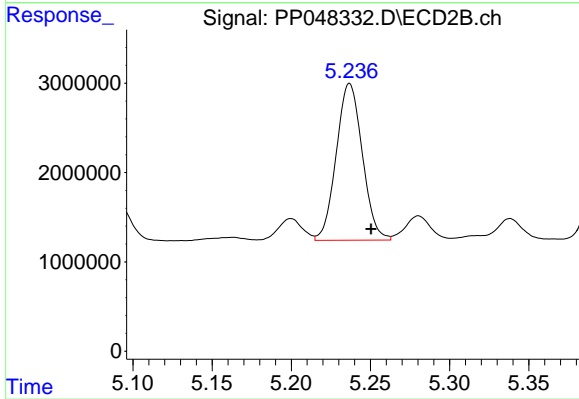
#19 AR-1242-4

R.T.: 4.673 min
 Delta R.T.: -0.013 min
 Response: 24795800
 Conc: 772.00 ng/ml



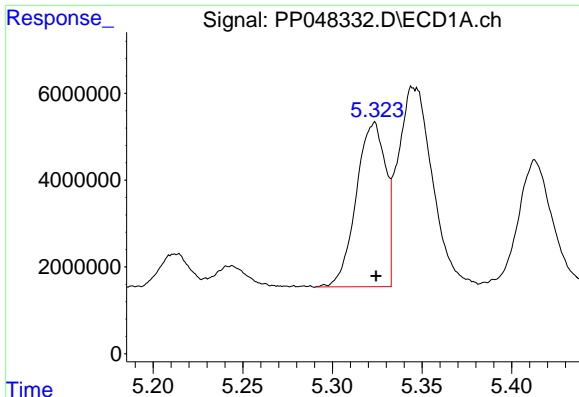
#20 AR-1242-5

R.T.: 6.337 min
 Delta R.T.: -0.004 min
 Response: 5563337
 Conc: 130.63 ng/ml



#20 AR-1242-5

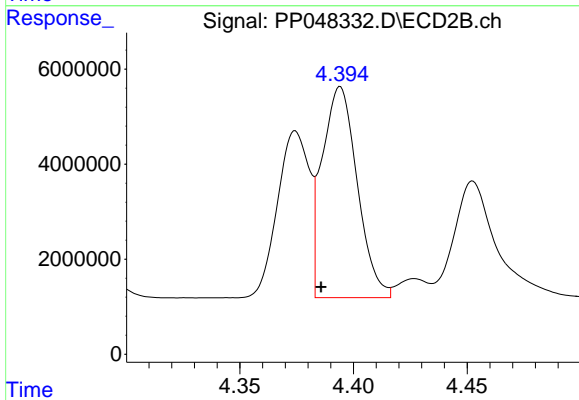
R.T.: 5.237 min
 Delta R.T.: -0.014 min
 Response: 20095335
 Conc: 481.19 ng/ml



#21 AR-1248-1

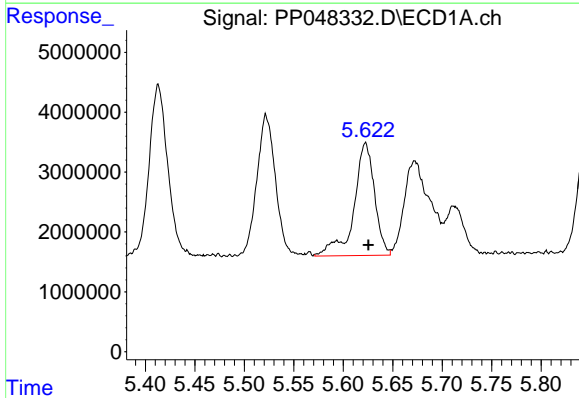
R.T.: 5.323 min
 Delta R.T.: -0.001 min
 Response: 43074085
 Conc: 998.60 ng/ml

Instrument :
 ECD_P
 ClientSampleId :



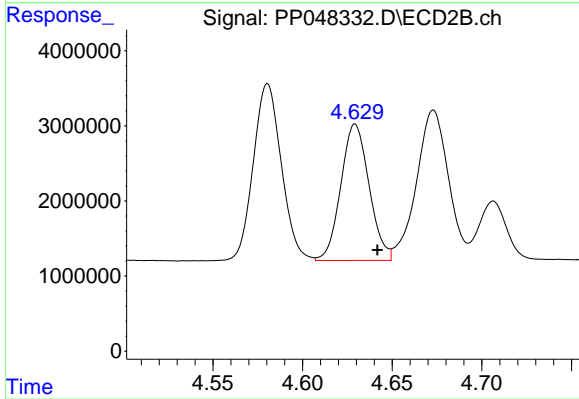
#21 AR-1248-1

R.T.: 4.394 min
 Delta R.T.: 0.008 min
 Response: 47754269
 Conc: 1304.76 ng/ml



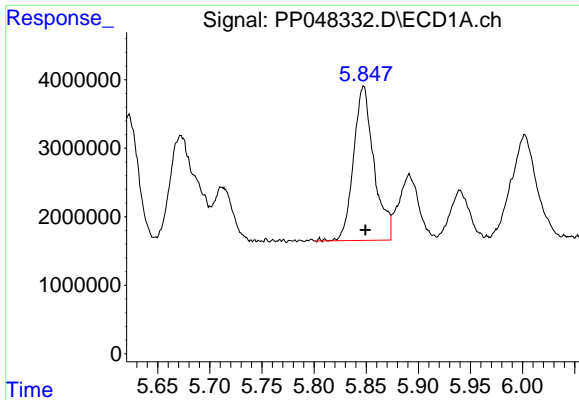
#22 AR-1248-2

R.T.: 5.623 min
 Delta R.T.: -0.003 min
 Response: 27306240
 Conc: 477.48 ng/ml



#22 AR-1248-2

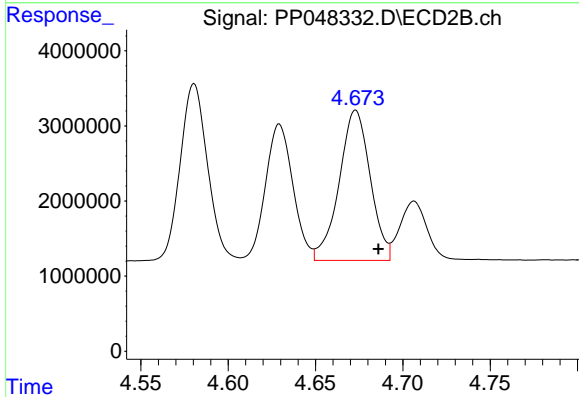
R.T.: 4.629 min
 Delta R.T.: -0.012 min
 Response: 19936657
 Conc: 418.63 ng/ml



#23 AR-1248-3

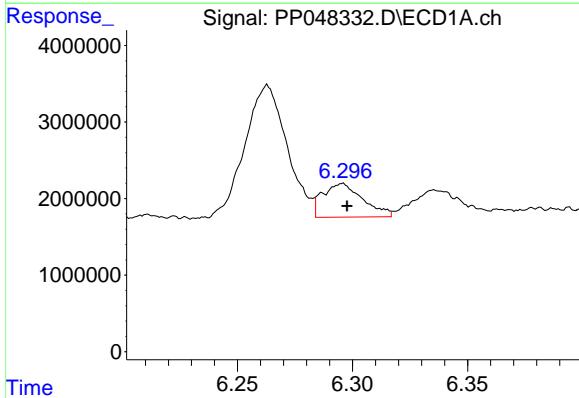
R.T.: 5.847 min
 Delta R.T.: -0.002 min
 Response: 30572596
 Conc: 451.69 ng/ml

Instrument :
 ECD_P
 ClientSampleId :



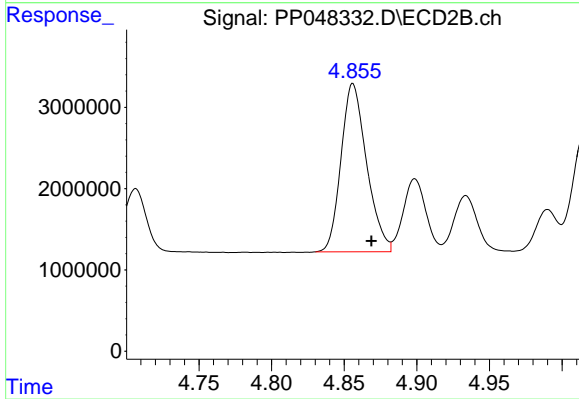
#23 AR-1248-3

R.T.: 4.673 min
 Delta R.T.: -0.013 min
 Response: 24795800
 Conc: 500.51 ng/ml



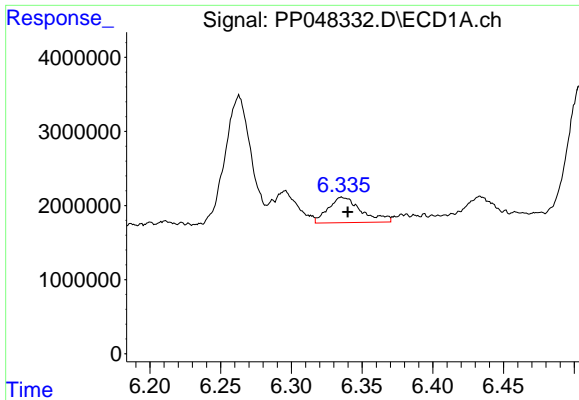
#24 AR-1248-4

R.T.: 6.295 min
 Delta R.T.: -0.003 min
 Response: 5302417
 Conc: 68.18 ng/ml



#24 AR-1248-4

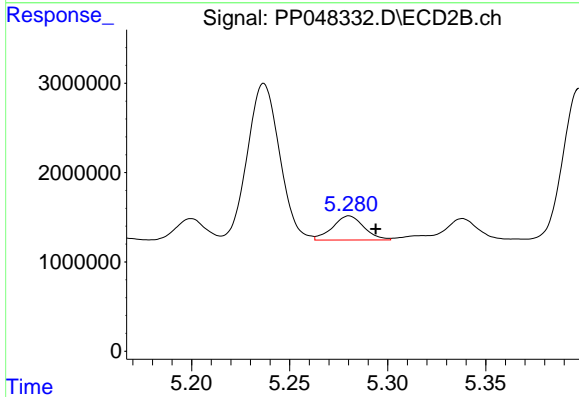
R.T.: 4.856 min
 Delta R.T.: -0.013 min
 Response: 25376427
 Conc: 435.58 ng/ml



#25 AR-1248-5

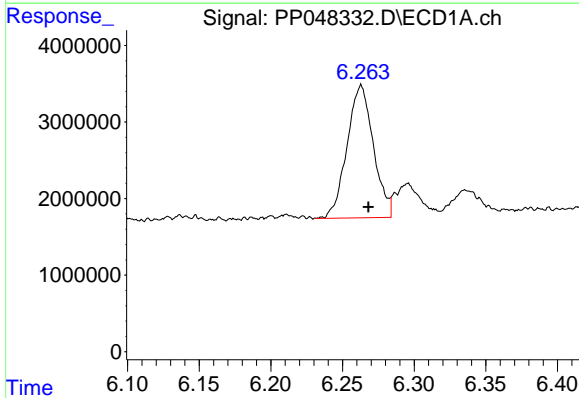
R.T.: 6.337 min
Delta R.T.: -0.003 min
Response: 5563337
Conc: 73.14 ng/ml

Instrument :
ECD_P
ClientSampleId :



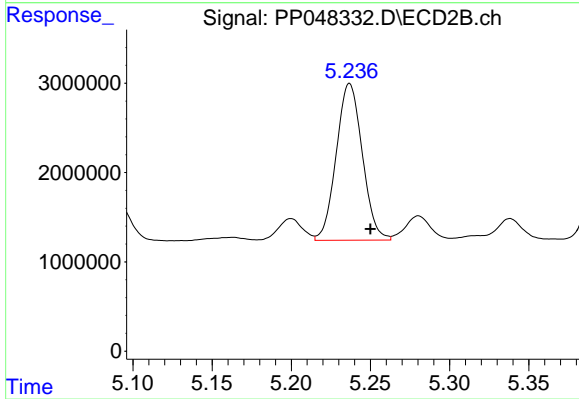
#25 AR-1248-5

R.T.: 5.280 min
Delta R.T.: -0.014 min
Response: 2992421
Conc: 49.61 ng/ml



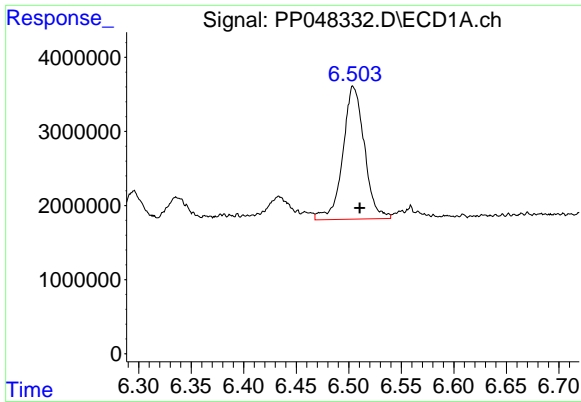
#26 AR-1254-1

R.T.: 6.263 min
Delta R.T.: -0.005 min
Response: 22180283
Conc: 305.53 ng/ml



#26 AR-1254-1

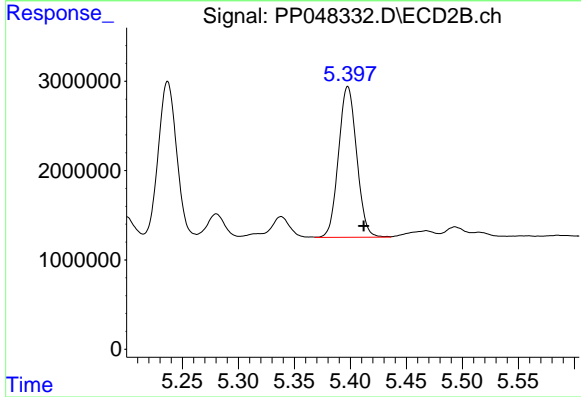
R.T.: 5.237 min
Delta R.T.: -0.013 min
Response: 20095335
Conc: 229.23 ng/ml



#27 AR-1254-2

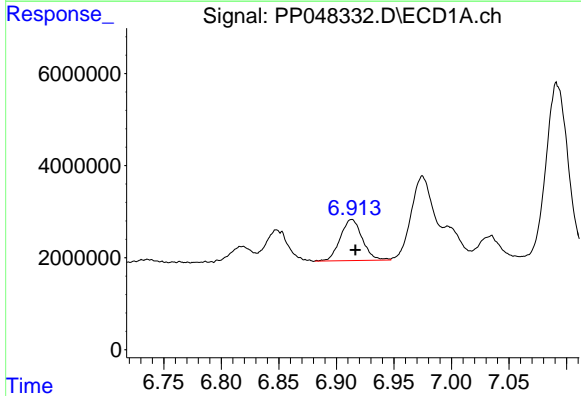
R.T.: 6.505 min
 Delta R.T.: -0.006 min
 Response: 25599968
 Conc: 215.15 ng/ml

Instrument :
 ECD_P
 ClientSampleId :



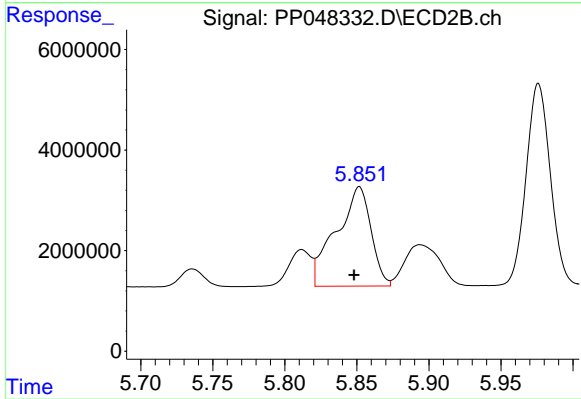
#27 AR-1254-2

R.T.: 5.398 min
 Delta R.T.: -0.014 min
 Response: 19071741
 Conc: 253.83 ng/ml



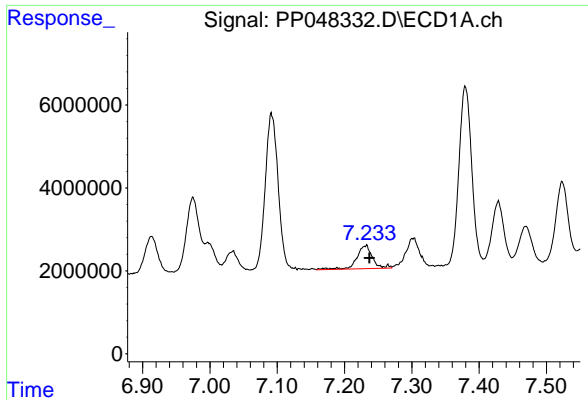
#28 AR-1254-3

R.T.: 6.913 min
 Delta R.T.: -0.003 min
 Response: 11995689
 Conc: 100.98 ng/ml



#28 AR-1254-3

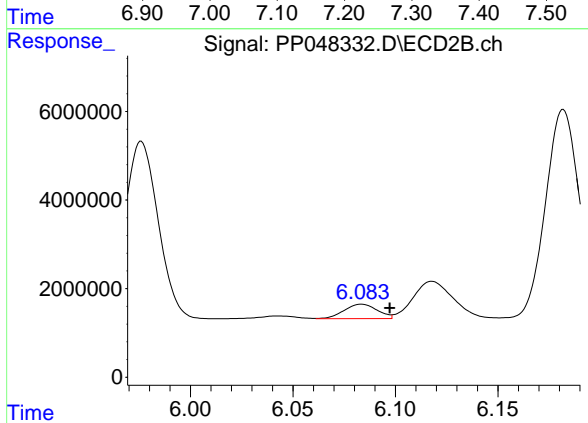
R.T.: 5.852 min
 Delta R.T.: 0.004 min
 Response: 33252004
 Conc: 271.01 ng/ml



#29 AR-1254-4

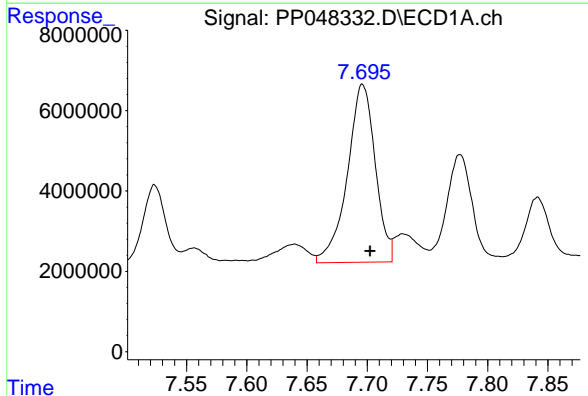
R.T.: 7.231 min
 Delta R.T.: -0.006 min
 Response: 9053841
 Conc: 100.38 ng/ml

Instrument :
 ECD_P
 ClientSampleId :



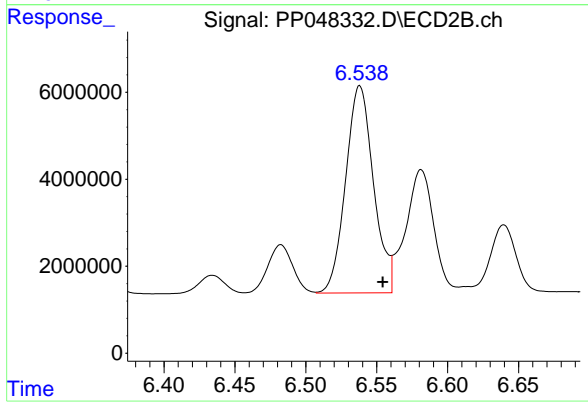
#29 AR-1254-4

R.T.: 6.083 min
 Delta R.T.: -0.014 min
 Response: 3681259
 Conc: 49.03 ng/ml



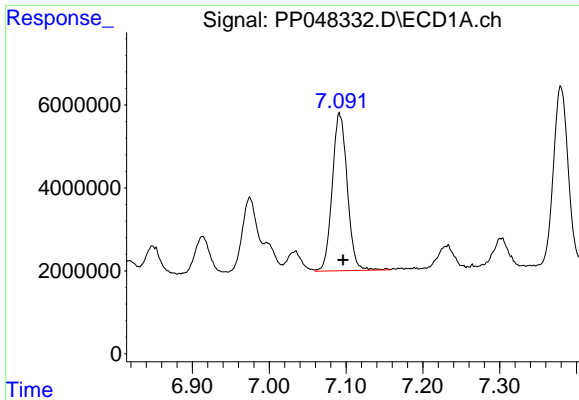
#30 AR-1254-5

R.T.: 7.696 min
 Delta R.T.: -0.006 min
 Response: 71338001
 Conc: 769.85 ng/ml



#30 AR-1254-5

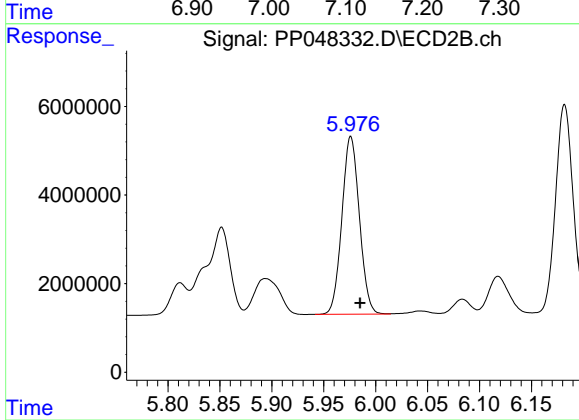
R.T.: 6.538 min
 Delta R.T.: -0.016 min
 Response: 65233843
 Conc: 644.37 ng/ml



#31 AR-1260-1

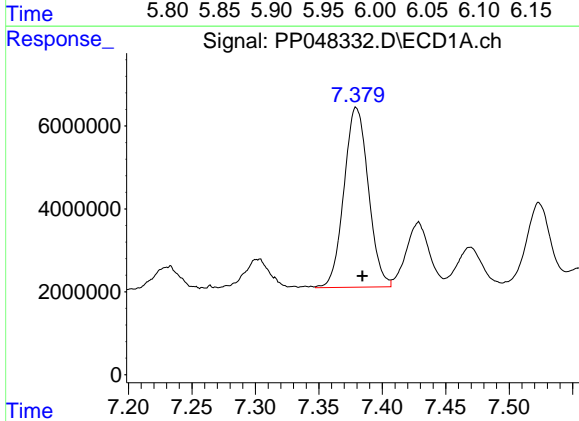
R.T.: 7.092 min
Delta R.T.: -0.004 min
Response: 51141297
Conc: 547.92 ng/ml

Instrument :
ECD_P
ClientSampleId :



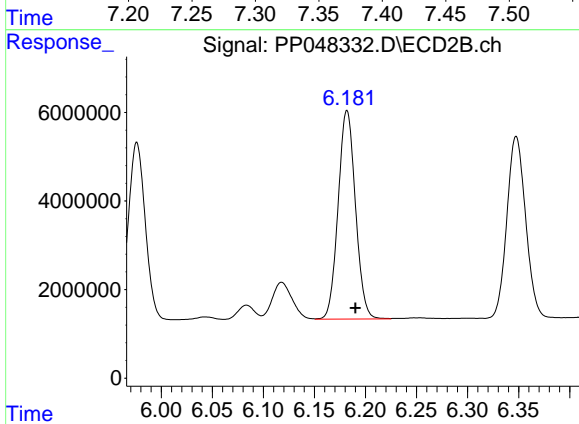
#31 AR-1260-1

R.T.: 5.976 min
Delta R.T.: -0.009 min
Response: 47040663
Conc: 549.52 ng/ml



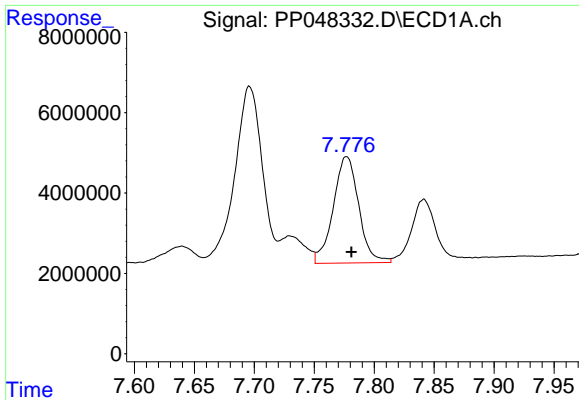
#32 AR-1260-2

R.T.: 7.380 min
Delta R.T.: -0.005 min
Response: 57999182
Conc: 518.84 ng/ml



#32 AR-1260-2

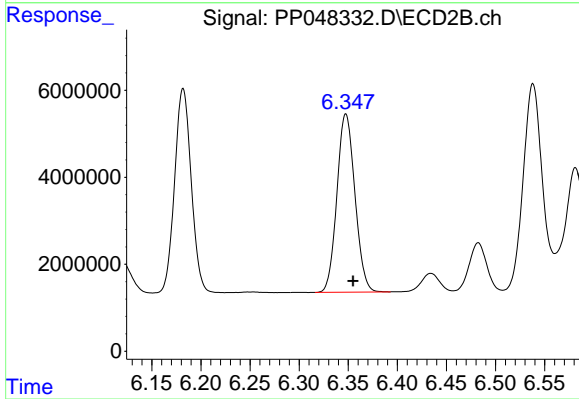
R.T.: 6.182 min
Delta R.T.: -0.008 min
Response: 55647227
Conc: 539.86 ng/ml



#33 AR-1260-3

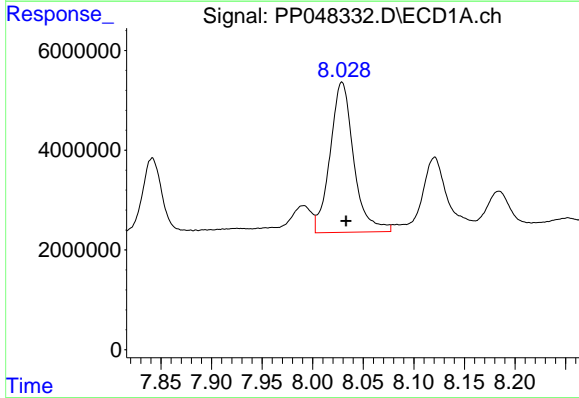
R.T.: 7.777 min
 Delta R.T.: -0.004 min
 Response: 39158848
 Conc: 457.16 ng/ml

Instrument :
 ECD_P
 ClientSampleId :



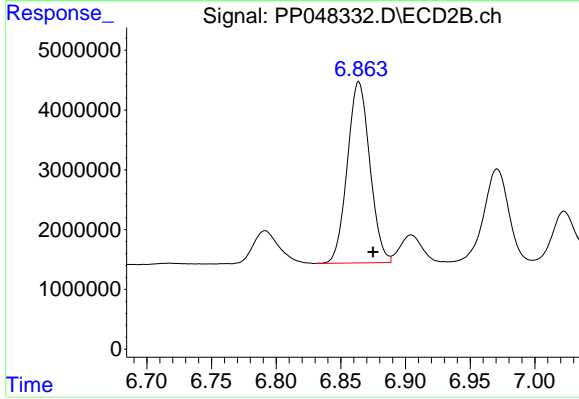
#33 AR-1260-3

R.T.: 6.348 min
 Delta R.T.: -0.007 min
 Response: 52397539
 Conc: 529.15 ng/ml



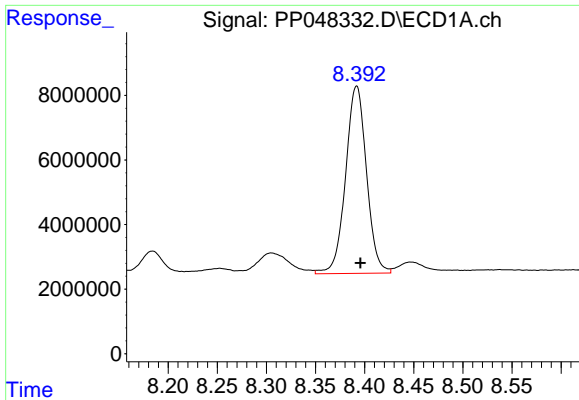
#34 AR-1260-4

R.T.: 8.029 min
 Delta R.T.: -0.004 min
 Response: 48942586
 Conc: 471.70 ng/ml



#34 AR-1260-4

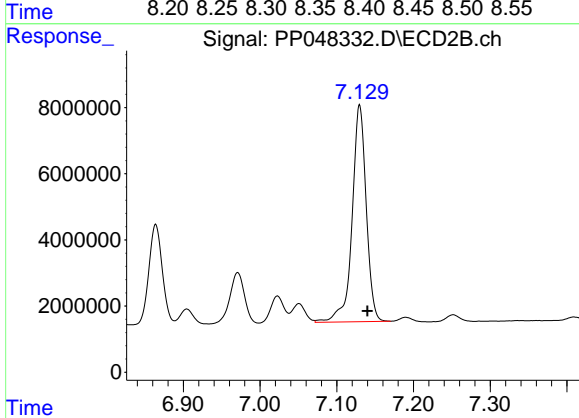
R.T.: 6.864 min
 Delta R.T.: -0.011 min
 Response: 36713423
 Conc: 441.00 ng/ml



#35 AR-1260-5

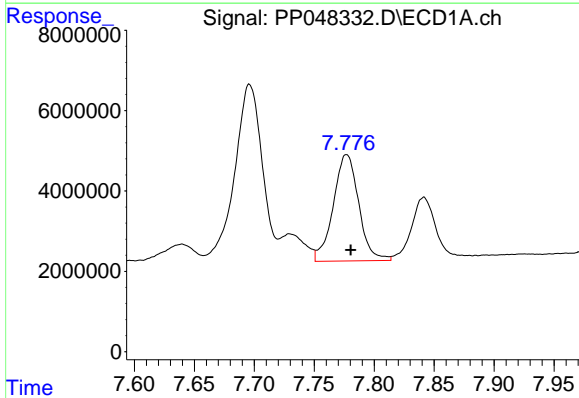
R.T.: 8.392 min
Delta R.T.: -0.004 min
Response: 86073166
Conc: 417.11 ng/ml

Instrument :
ECD_P
ClientSampleId :



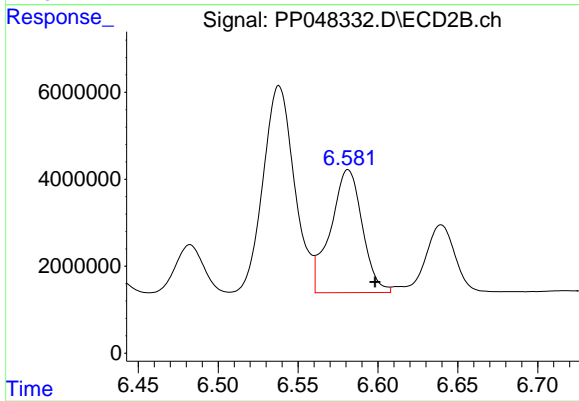
#35 AR-1260-5

R.T.: 7.130 min
Delta R.T.: -0.010 min
Response: 84381772
Conc: 425.29 ng/ml



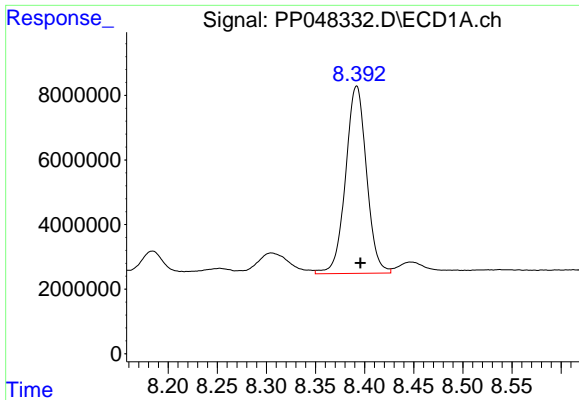
#36 AR-1262-1

R.T.: 7.777 min
Delta R.T.: -0.003 min
Response: 39158848
Conc: 343.35 ng/ml



#36 AR-1262-1

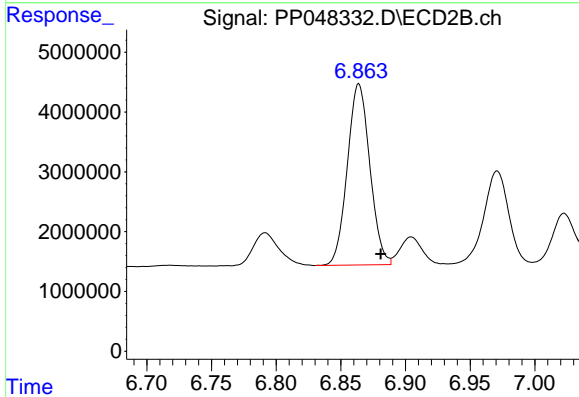
R.T.: 6.581 min
Delta R.T.: -0.017 min
Response: 39106208
Conc: 361.95 ng/ml



#37 AR-1262-2

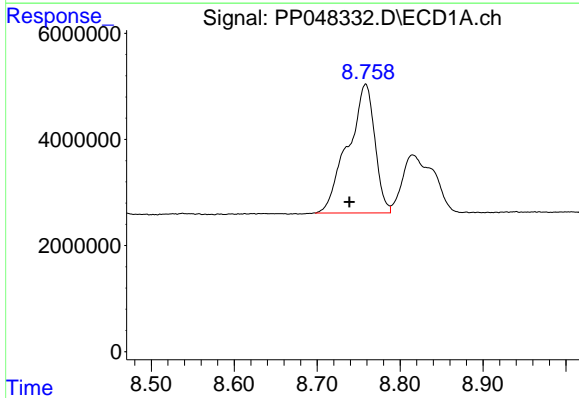
R.T.: 8.392 min
 Delta R.T.: -0.004 min
 Response: 86073166
 Conc: 403.82 ng/ml

Instrument :
 ECD_P
 ClientSampleId :



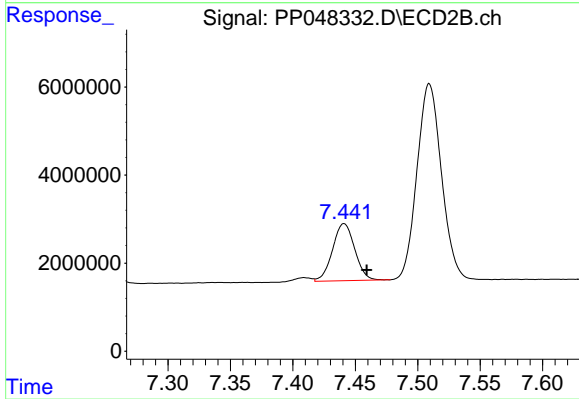
#37 AR-1262-2

R.T.: 6.864 min
 Delta R.T.: -0.017 min
 Response: 36713423
 Conc: 370.98 ng/ml



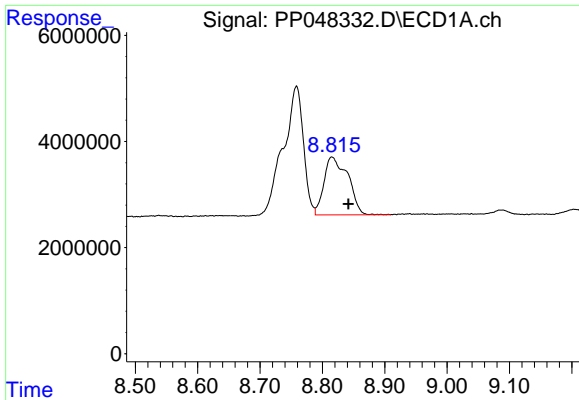
#38 AR-1262-3

R.T.: 8.758 min
 Delta R.T.: 0.019 min
 Response: 54510543
 Conc: 584.92 ng/ml



#38 AR-1262-3

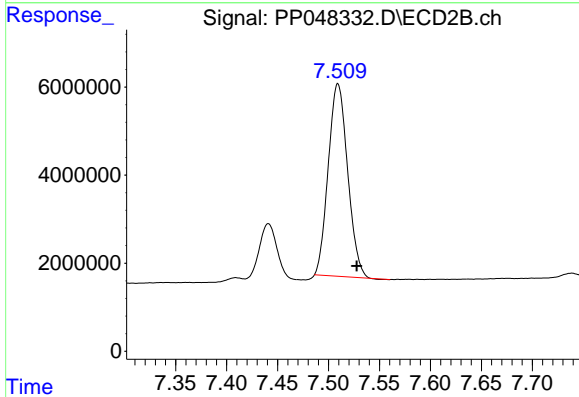
R.T.: 7.441 min
 Delta R.T.: -0.018 min
 Response: 16040848
 Conc: 213.15 ng/ml



#39 AR-1262-4

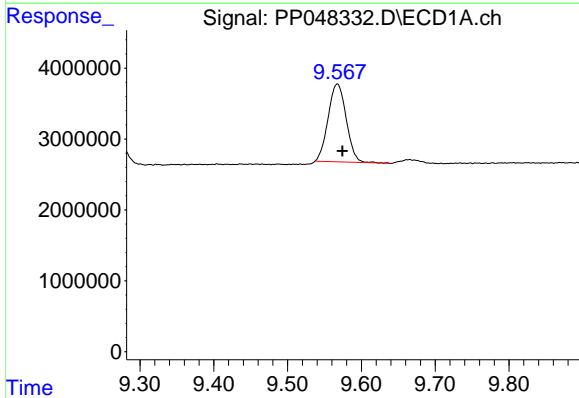
R.T.: 8.816 min
 Delta R.T.: -0.026 min
 Response: 29130916
 Conc: 489.94 ng/ml

Instrument :
 ECD_P
 ClientSampleId :



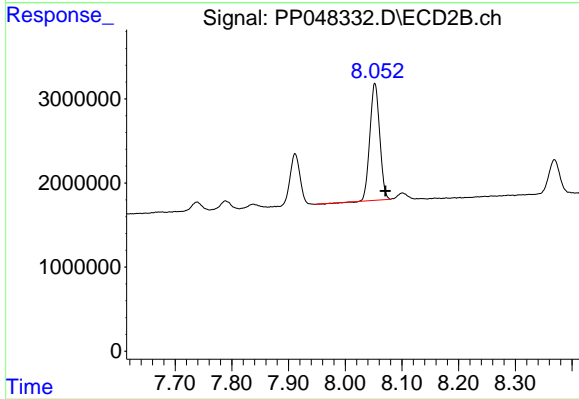
#39 AR-1262-4

R.T.: 7.509 min
 Delta R.T.: -0.019 min
 Response: 57823960
 Conc: 397.02 ng/ml



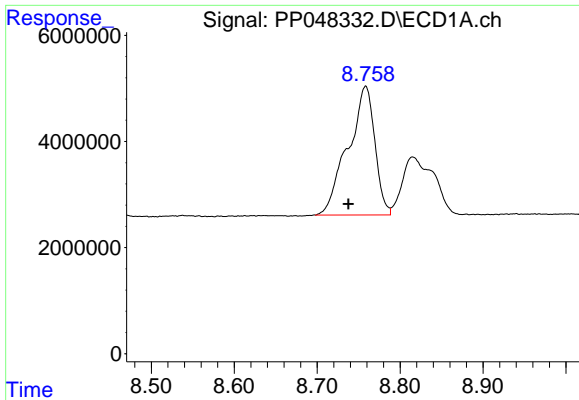
#40 AR-1262-5

R.T.: 9.567 min
 Delta R.T.: -0.007 min
 Response: 18749669
 Conc: 236.90 ng/ml



#40 AR-1262-5

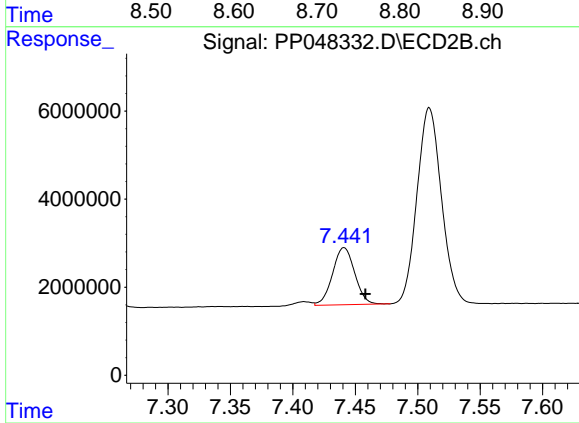
R.T.: 8.052 min
 Delta R.T.: -0.018 min
 Response: 16803522
 Conc: 248.97 ng/ml



#41 AR-1268-1

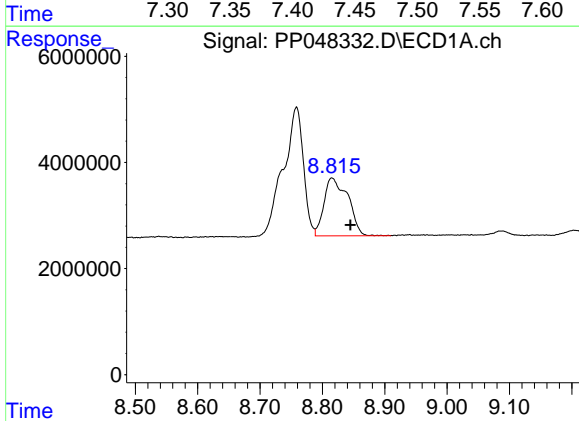
R.T.: 8.758 min
 Delta R.T.: 0.020 min
 Response: 54510543
 Conc: 206.06 ng/ml

Instrument :
 ECD_P
 ClientSampleId :



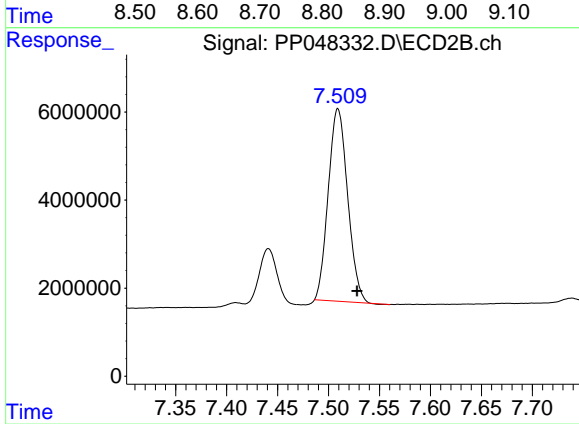
#41 AR-1268-1

R.T.: 7.441 min
 Delta R.T.: -0.017 min
 Response: 16040848
 Conc: 68.68 ng/ml



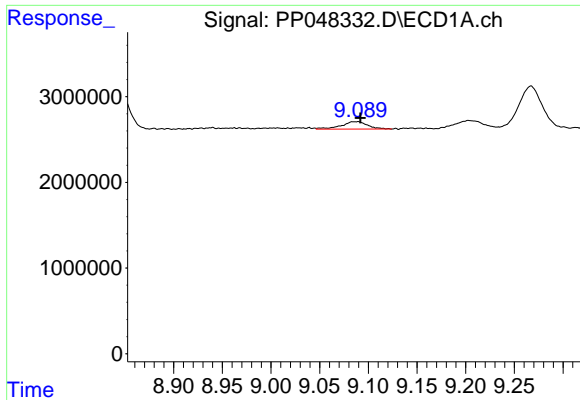
#42 AR-1268-2

R.T.: 8.816 min
 Delta R.T.: -0.029 min
 Response: 29130916
 Conc: 120.63 ng/ml



#42 AR-1268-2

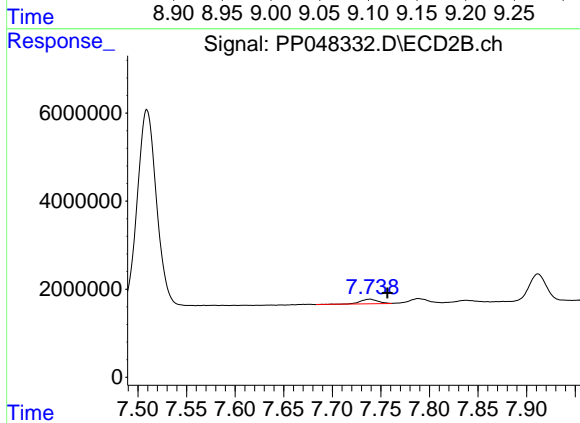
R.T.: 7.509 min
 Delta R.T.: -0.019 min
 Response: 57823960
 Conc: 267.25 ng/ml



#43 AR-1268-3

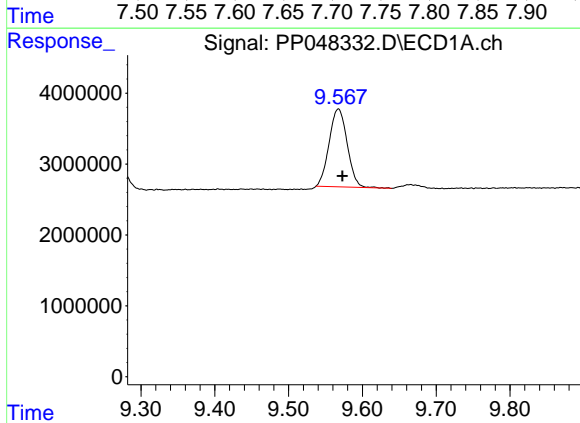
R.T.: 9.087 min
 Delta R.T.: -0.005 min
 Response: 1646317
 Conc: 8.01 ng/ml

Instrument :
 ECD_P
 ClientSampleId :



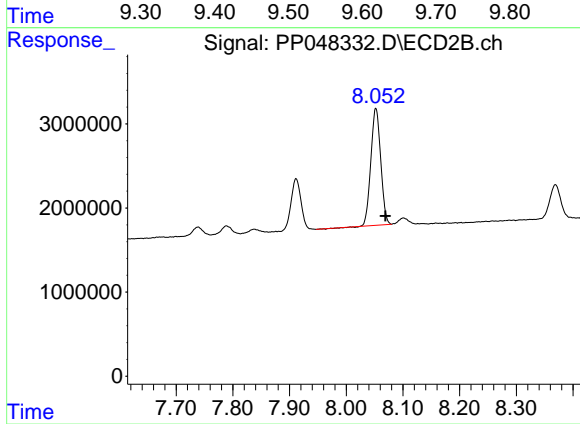
#43 AR-1268-3

R.T.: 7.739 min
 Delta R.T.: -0.018 min
 Response: 1327474
 Conc: 7.14 ng/ml



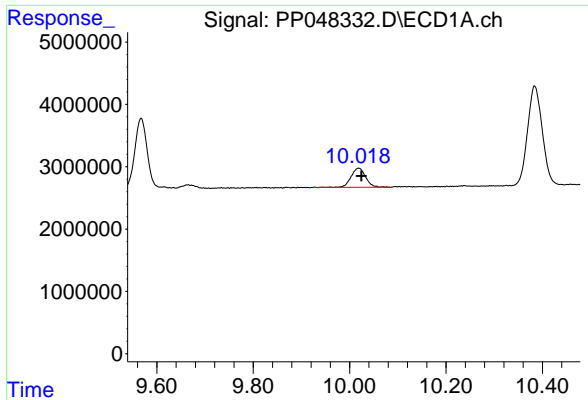
#44 AR-1268-4

R.T.: 9.567 min
 Delta R.T.: -0.005 min
 Response: 18749669
 Conc: 208.73 ng/ml



#44 AR-1268-4

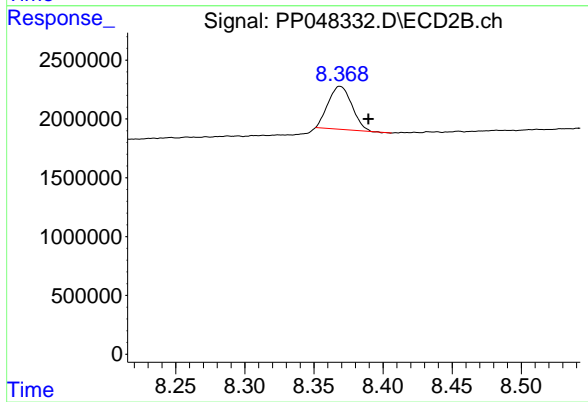
R.T.: 8.052 min
 Delta R.T.: -0.017 min
 Response: 16803522
 Conc: 204.55 ng/ml



#45 AR-1268-5

R.T.: 10.019 min
Delta R.T.: -0.006 min
Response: 6432928
Conc: 9.11 ng/ml

Instrument :
ECD_P
ClientSampleId :



#45 AR-1268-5

R.T.: 8.369 min
Delta R.T.: -0.020 min
Response: 4366942
Conc: 7.21 ng/ml