

Data Path : Z:\pestpcbsrv\HPCHEM1\ECD\_P\Data\PP060222\  
 Data File : PP048346.D  
 Signal(s) : Signal #1: ECD1A.ch Signal #2: ECD2B.ch  
 Acq On : 02 Jun 2022 21:54  
 Operator : YP\AJ  
 Sample : I.BLK  
 Misc :  
 ALS Vial : 2 Sample Multiplier: 1

Instrument :  
 ECD\_P  
 ClientSampleId :

Integration File signal 1: autoint1.e  
 Integration File signal 2: autoint2.e  
 Quant Time: Jun 03 02:36:18 2022  
 Quant Method : Z:\pestpcbsrv\HPCHEM1\ECD\_P\methods\PP052722.M  
 Quant Title : GC EXTRACTABLES  
 QLast Update : Fri May 27 23:53:39 2022  
 Response via : Initial Calibration  
 Integrator: ChemStation

Volume Inj. : 2 µl  
 Signal #1 Phase : ZB-MR2 Signal #2 Phase: ZB-MR2  
 Signal #1 Info : 30Mx0.32mmx 0.50µ Signal #2 Info : 30M x 0.32mm x 0.25µm

Compound	RT#1	RT#2	Resp#1	Resp#2	ng/ml	ng/ml
System Monitoring Compounds						
1) SA Tetrachlo...	4.034	3.215	50118110	41261413	21.402	20.937
2) SA Decachlor...	10.385	8.642	41379200	34589568	21.290	21.398
Target Compounds						
5) L1 AR-1016-3	5.401f	0.000	1191147	0	17.627	N.D. #
8) L2 AR-1221-1	4.250f	0.000	130337	0	4.930	N.D. #
9) L2 AR-1221-2	4.368	3.531f	703392	538352	34.344	35.050
10) L2 AR-1221-3	4.426f	0.000	368542	0	5.887	N.D. #
11) L3 AR-1232-1	4.426f	0.000	368542	0	7.095	N.D. #
18) L4 AR-1242-3	5.401f	0.000	1191147	0	24.265	N.D. #
20) L4 AR-1242-5	0.000	5.263	0	4333773	N.D.	103.773 #
24) L5 AR-1248-4	6.270f	0.000	11448060	0	147.207	N.D. #
26) L6 AR-1254-1	6.270	5.263	11448060	4333773	157.695	49.436 #
28) L6 AR-1254-3	6.932f	5.846	27170745	3273161	228.722	26.677 #
30) L6 AR-1254-5	0.000	6.562	0	58029	N.D.	0.573 #
31) L7 AR-1260-1	7.122f	0.000	13816722	0	148.032	N.D. #
32) L7 AR-1260-2	0.000	6.201	0	35692	N.D.	0.346 #
33) L7 AR-1260-3	0.000	6.343	0	374147	N.D.	3.778 #
34) L7 AR-1260-4	0.000	6.868	0	80988	N.D.	0.973 #
35) L7 AR-1260-5	0.000	7.130	0	394959	N.D.	1.991 #
36) L8 AR-1262-1	0.000	6.589	0	131034	N.D.	1.213 #
37) L8 AR-1262-2	0.000	6.868	0	80988	N.D.	0.818 #
40) L8 AR-1262-5	9.590f	8.070	177040	16899	2.237	0.250 #
43) L9 AR-1268-3	9.103	0.000	670828	0	3.263	N.D. #
44) L9 AR-1268-4	9.590f	8.070	177040	16899	1.971	0.206 #
45) L9 AR-1268-5	10.022	8.368f	372263	161913	0.527	0.267 #

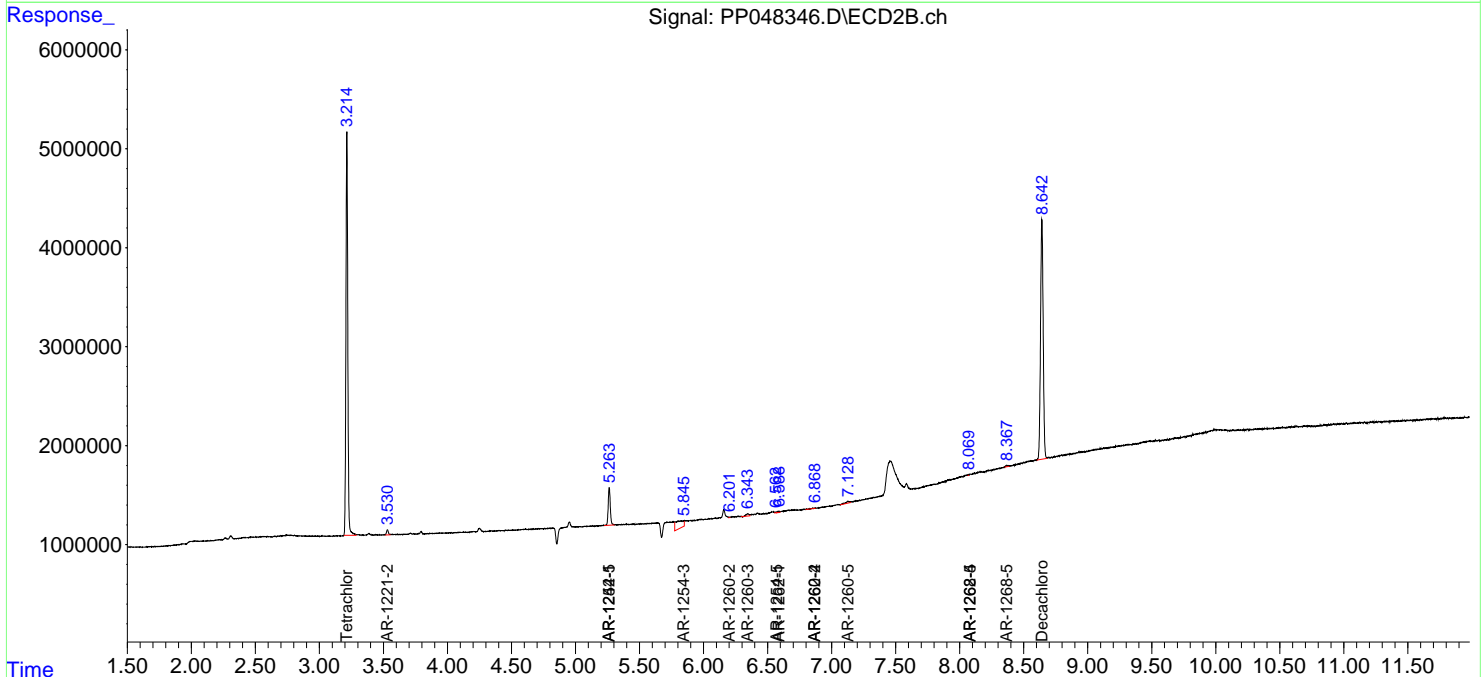
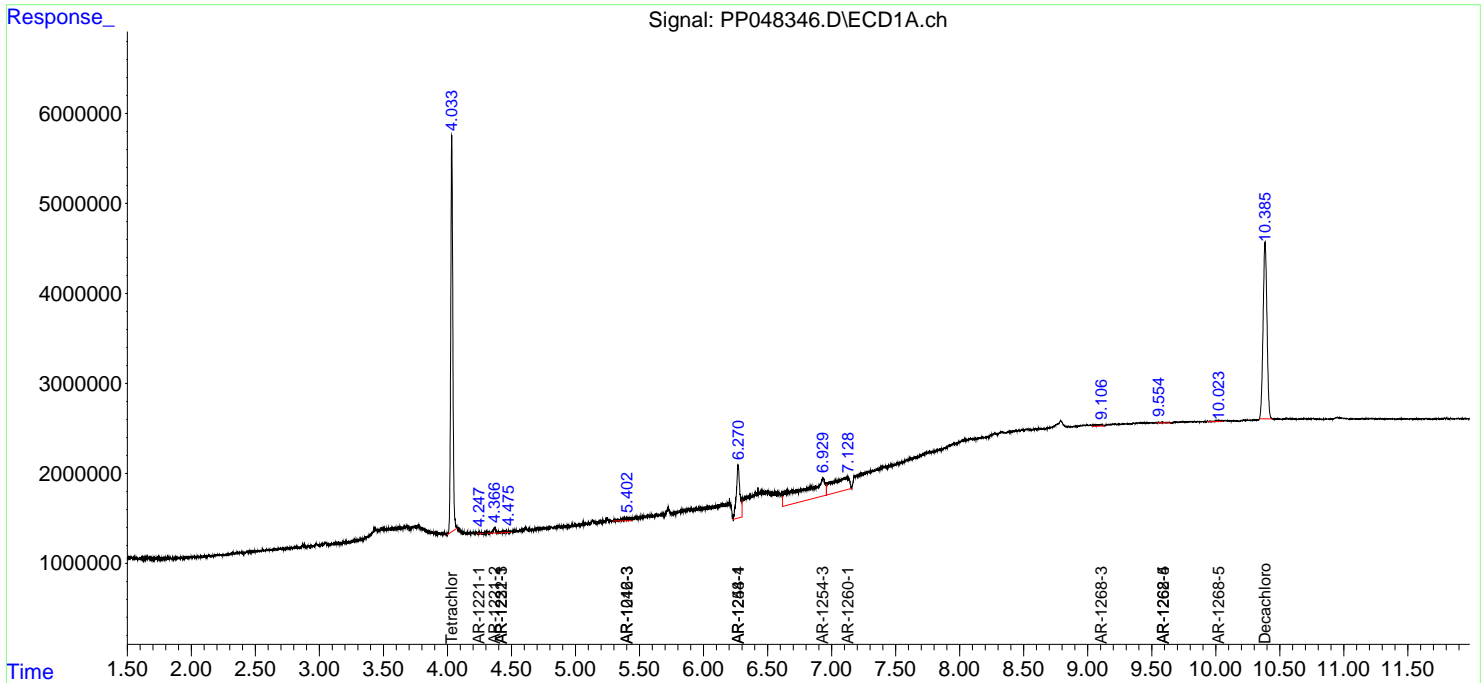
(f)=RT Delta > 1/2 Window (#)=Amounts differ by > 25% (m)=manual int.

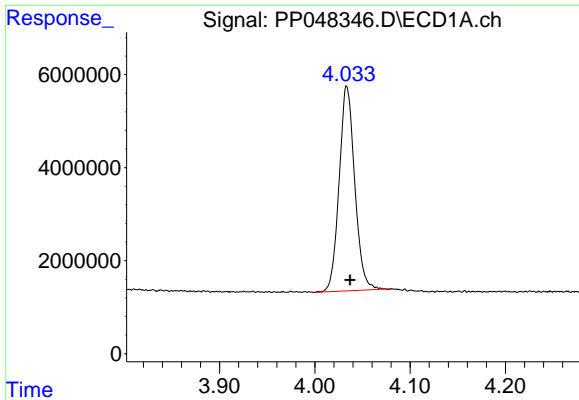
Data Path : Z:\pestpcbsrv\HPCHEM1\ECD\_P\Data\PP060222\  
 Data File : PP048346.D  
 Signal(s) : Signal #1: ECD1A.ch Signal #2: ECD2B.ch  
 Acq On : 02 Jun 2022 21:54  
 Operator : YP\AJ  
 Sample : I.BLK  
 Misc :  
 ALS Vial : 2 Sample Multiplier: 1

Instrument :  
 ECD\_P  
 ClientSampleId :

Integration File signal 1: autoint1.e  
 Integration File signal 2: autoint2.e  
 Quant Time: Jun 03 02:36:18 2022  
 Quant Method : Z:\pestpcbsrv\HPCHEM1\ECD\_P\methods\PP052722.M  
 Quant Title : GC EXTRACTABLES  
 QLast Update : Fri May 27 23:53:39 2022  
 Response via : Initial Calibration  
 Integrator: ChemStation

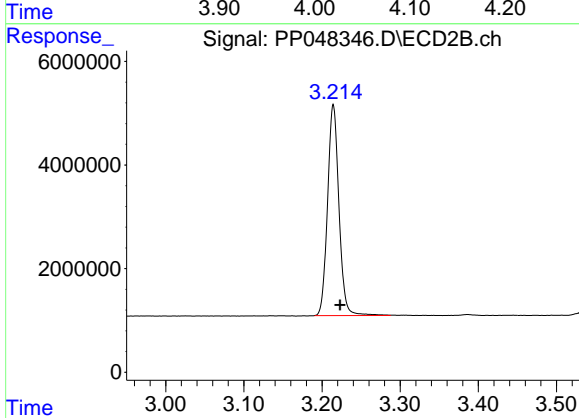
Volume Inj. : 2 µl  
 Signal #1 Phase : ZB-MR1 Signal #2 Phase: ZB-MR2  
 Signal #1 Info : 30Mx0.32mmx 0.50µ Signal #2 Info : 30M x 0.32mm x 0.25µm



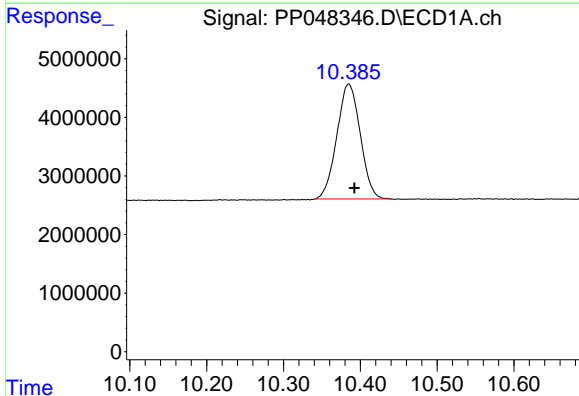


#1 Tetrachloro-m-xylene  
 R.T.: 4.034 min  
 Delta R.T.: -0.003 min  
 Response: 50118110  
 Conc: 21.40 ng/ml

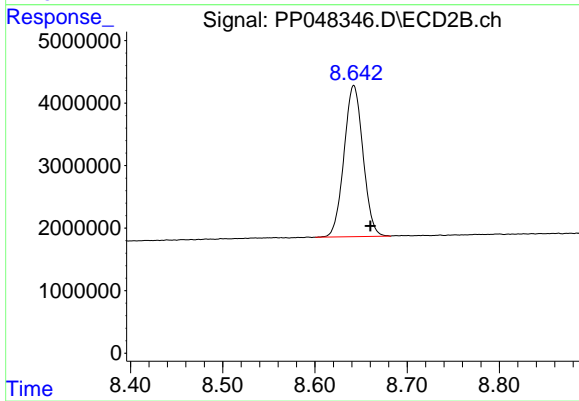
Instrument :  
 ECD\_P  
 ClientSampleId :



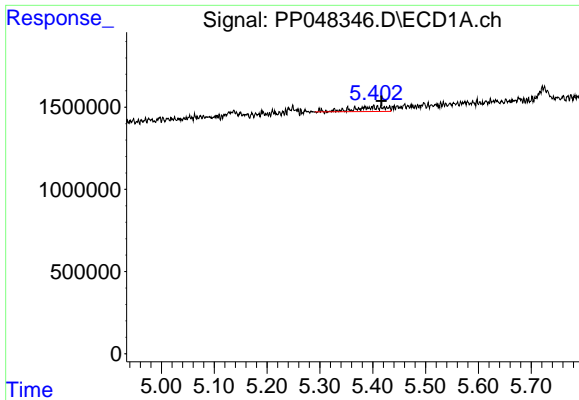
#1 Tetrachloro-m-xylene  
 R.T.: 3.215 min  
 Delta R.T.: -0.009 min  
 Response: 41261413  
 Conc: 20.94 ng/ml



#2 Decachlorobiphenyl  
 R.T.: 10.385 min  
 Delta R.T.: -0.007 min  
 Response: 41379200  
 Conc: 21.29 ng/ml



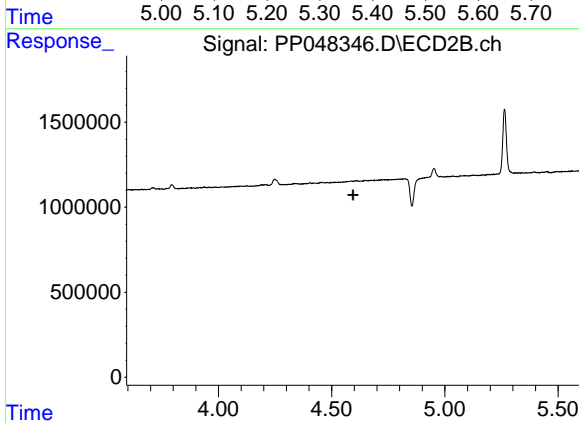
#2 Decachlorobiphenyl  
 R.T.: 8.642 min  
 Delta R.T.: -0.018 min  
 Response: 34589568  
 Conc: 21.40 ng/ml



#5 AR-1016-3

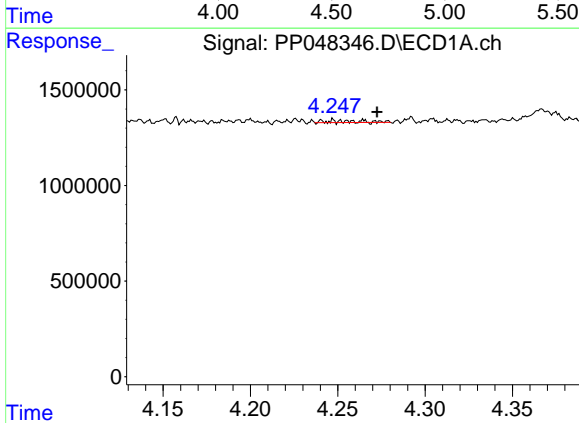
R.T.: 5.401 min  
 Delta R.T.: -0.015 min  
 Response: 1191147  
 Conc: 17.63 ng/ml

Instrument :  
 ECD\_P  
 ClientSampleId :



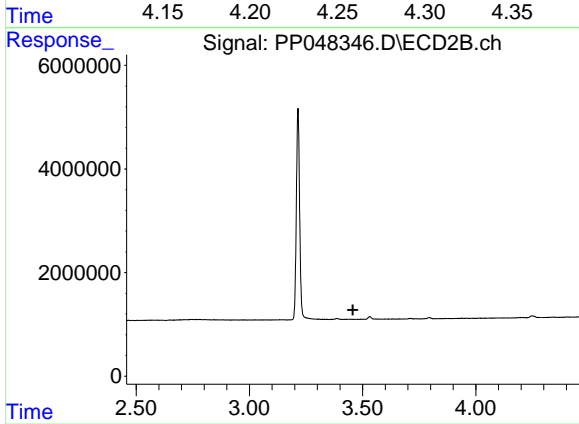
#5 AR-1016-3

R.T.: 0.000 min  
 Exp R.T. : 4.594 min  
 Response: 0  
 Conc: N.D.



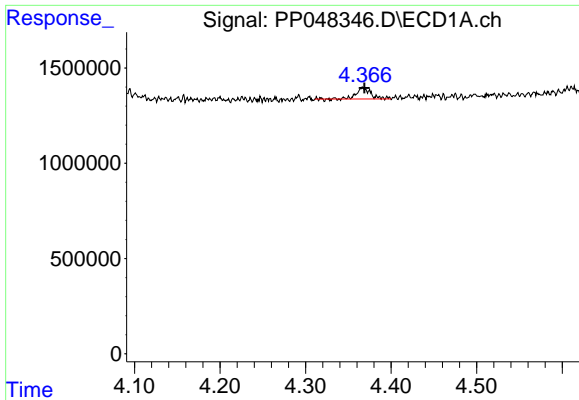
#8 AR-1221-1

R.T.: 4.250 min  
 Delta R.T.: -0.023 min  
 Response: 130337  
 Conc: 4.93 ng/ml



#8 AR-1221-1

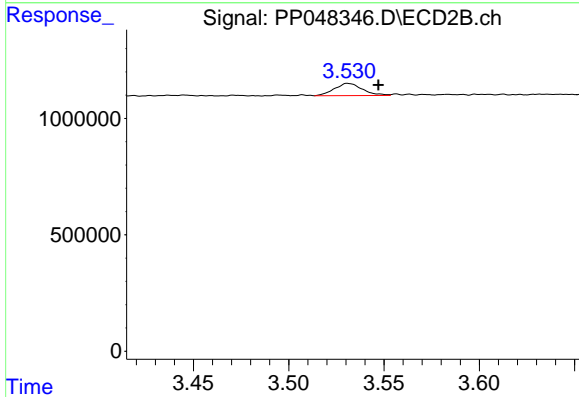
R.T.: 0.000 min  
 Exp R.T. : 3.457 min  
 Response: 0  
 Conc: N.D.



#9 AR-1221-2

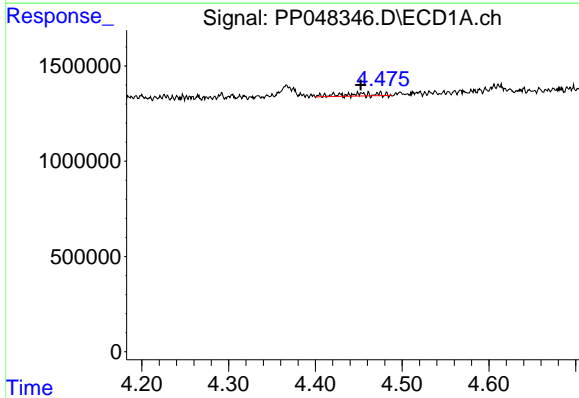
R.T.: 4.368 min  
 Delta R.T.: -0.002 min  
 Response: 703392  
 Conc: 34.34 ng/ml

Instrument :  
 ECD\_P  
 ClientSampleId :



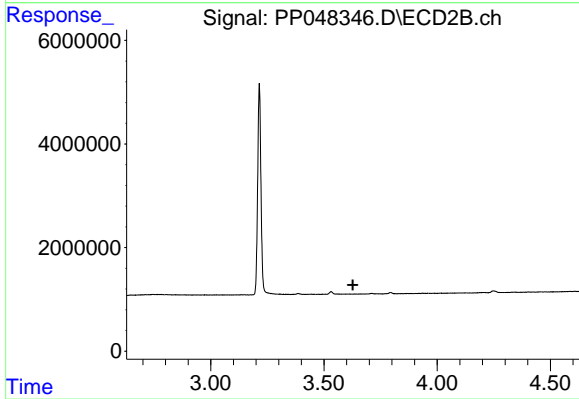
#9 AR-1221-2

R.T.: 3.531 min  
 Delta R.T.: -0.016 min  
 Response: 538352  
 Conc: 35.05 ng/ml



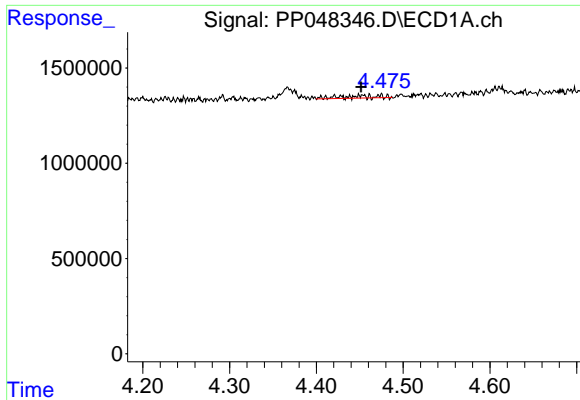
#10 AR-1221-3

R.T.: 4.426 min  
 Delta R.T.: -0.026 min  
 Response: 368542  
 Conc: 5.89 ng/ml



#10 AR-1221-3

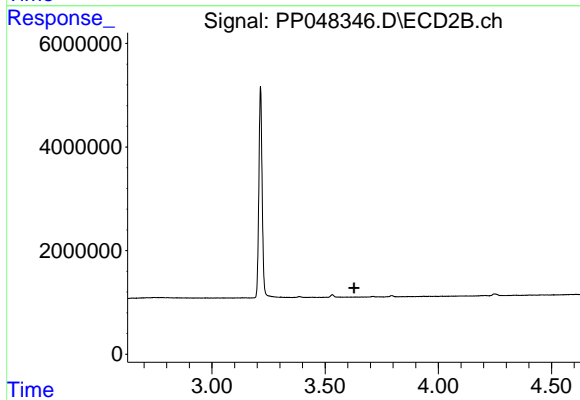
R.T.: 0.000 min  
 Exp R.T. : 3.628 min  
 Response: 0  
 Conc: N.D.



#11 AR-1232-1

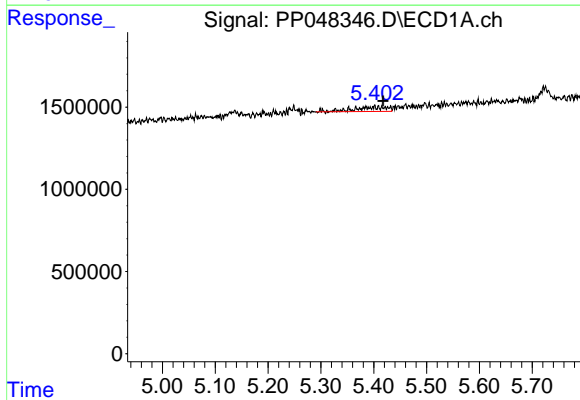
R.T.: 4.426 min  
 Delta R.T.: -0.025 min  
 Response: 368542  
 Conc: 7.10 ng/ml

Instrument :  
 ECD\_P  
 ClientSampleId :



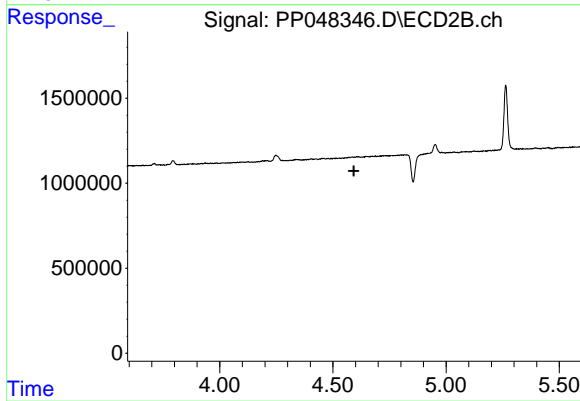
#11 AR-1232-1

R.T.: 0.000 min  
 Exp R.T. : 3.627 min  
 Response: 0  
 Conc: N.D.



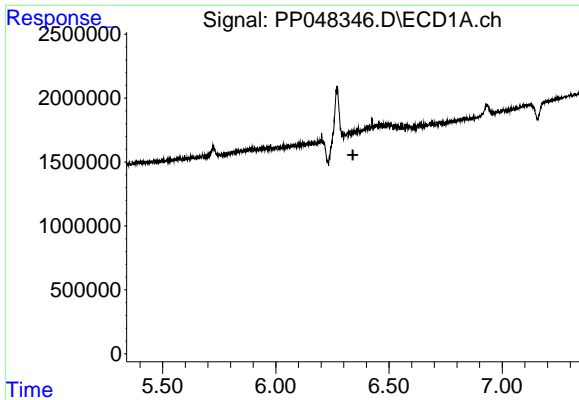
#18 AR-1242-3

R.T.: 5.401 min  
 Delta R.T.: -0.017 min  
 Response: 1191147  
 Conc: 24.26 ng/ml



#18 AR-1242-3

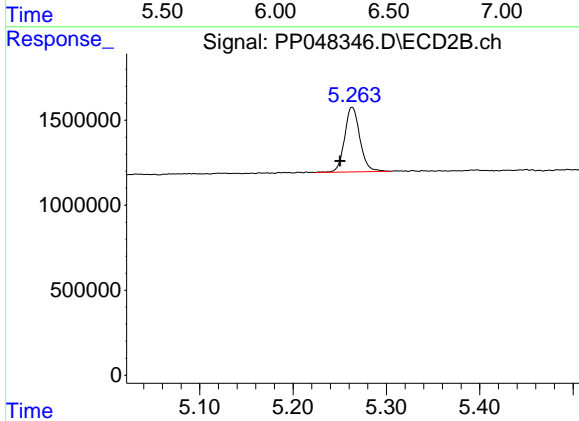
R.T.: 0.000 min  
 Exp R.T. : 4.593 min  
 Response: 0  
 Conc: N.D.



#20 AR-1242-5

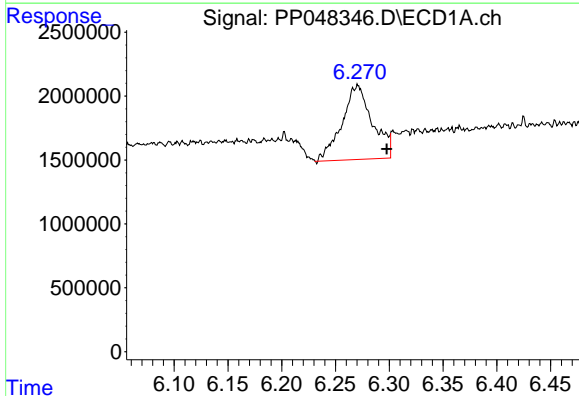
R.T.: 0.000 min  
 Exp R.T.: 6.340 min  
 Response: 0  
 Conc: N.D.

Instrument :  
 ECD\_P  
 ClientSampleId :



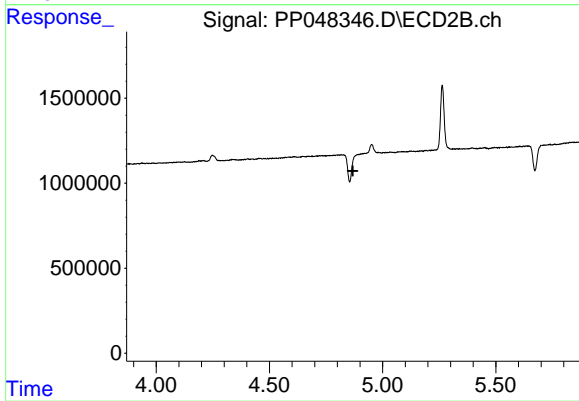
#20 AR-1242-5

R.T.: 5.263 min  
 Delta R.T.: 0.013 min  
 Response: 4333773  
 Conc: 103.77 ng/ml



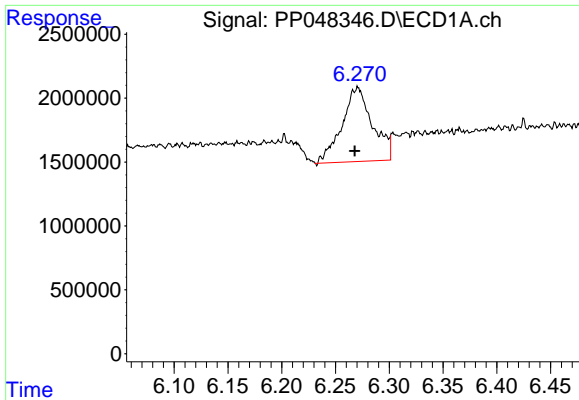
#24 AR-1248-4

R.T.: 6.270 min  
 Delta R.T.: -0.027 min  
 Response: 11448060  
 Conc: 147.21 ng/ml



#24 AR-1248-4

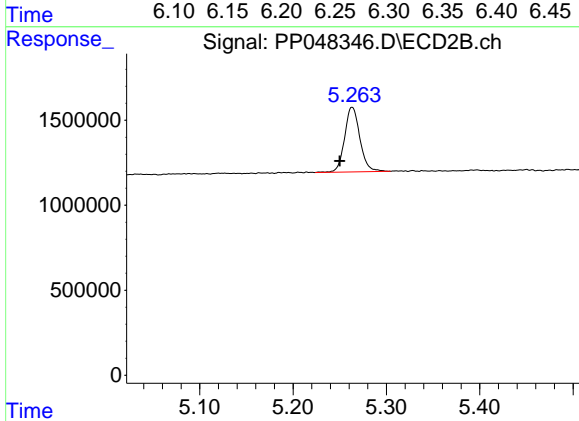
R.T.: 0.000 min  
 Exp R.T.: 4.869 min  
 Response: 0  
 Conc: N.D.



#26 AR-1254-1

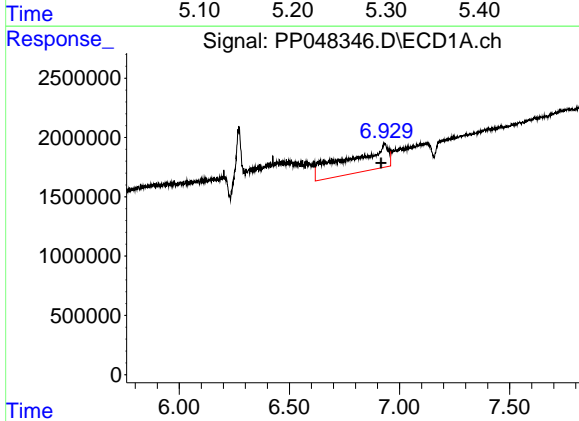
R.T.: 6.270 min  
 Delta R.T.: 0.002 min  
 Response: 11448060  
 Conc: 157.70 ng/ml

Instrument :  
 ECD\_P  
 ClientSampleId :



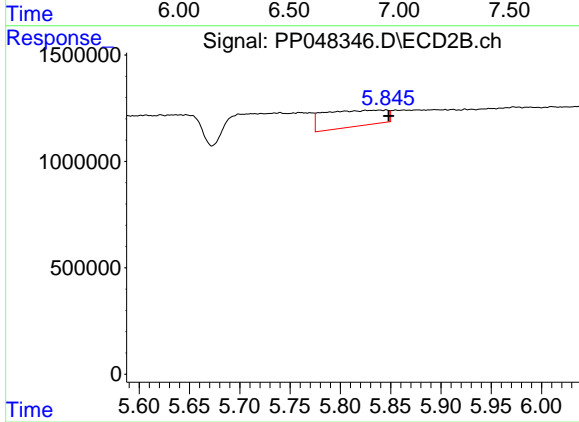
#26 AR-1254-1

R.T.: 5.263 min  
 Delta R.T.: 0.013 min  
 Response: 4333773  
 Conc: 49.44 ng/ml



#28 AR-1254-3

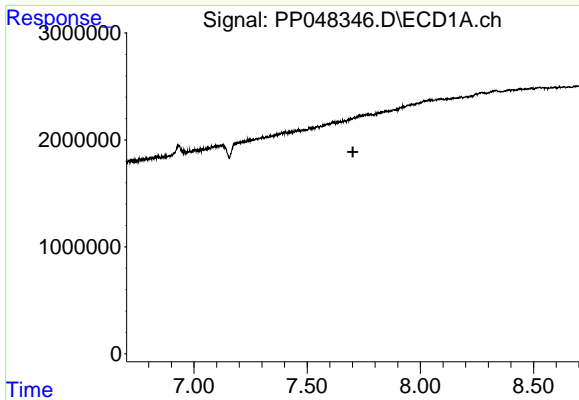
R.T.: 6.932 min  
 Delta R.T.: 0.016 min  
 Response: 27170745  
 Conc: 228.72 ng/ml



#28 AR-1254-3

R.T.: 5.846 min  
 Delta R.T.: -0.002 min  
 Response: 3273161  
 Conc: 26.68 ng/ml

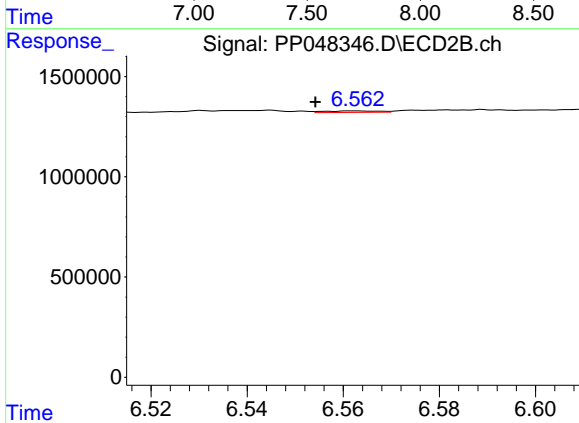




#30 AR-1254-5

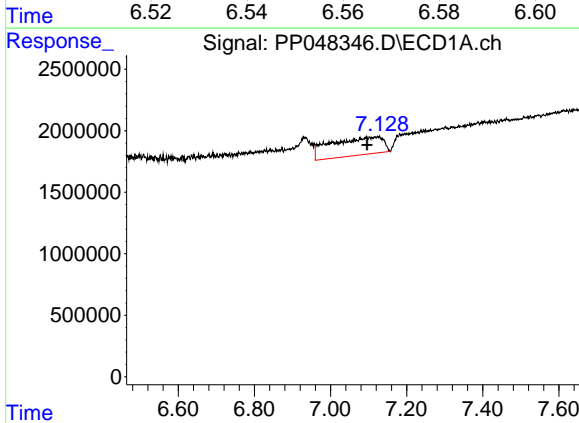
R.T.: 0.000 min  
 Exp R.T.: 7.702 min  
 Response: 0  
 Conc: N.D.

Instrument :  
 ECD\_P  
 ClientSampleId :



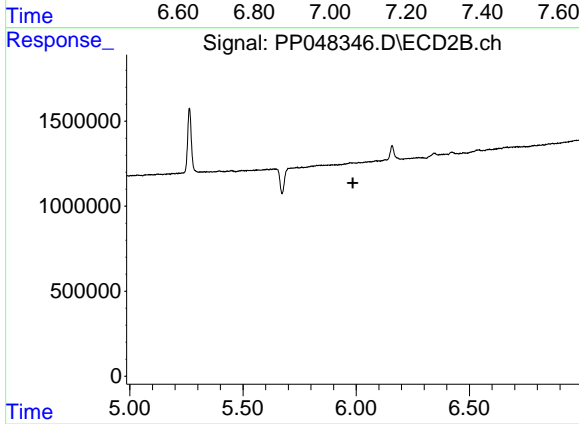
#30 AR-1254-5

R.T.: 6.562 min  
 Delta R.T.: 0.008 min  
 Response: 58029  
 Conc: 0.57 ng/ml



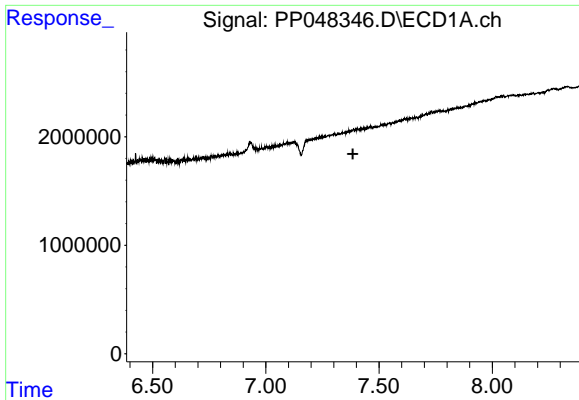
#31 AR-1260-1

R.T.: 7.122 min  
 Delta R.T.: 0.026 min  
 Response: 13816722  
 Conc: 148.03 ng/ml



#31 AR-1260-1

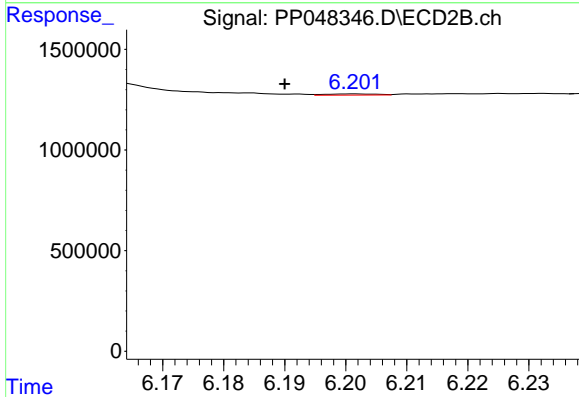
R.T.: 0.000 min  
 Exp R.T.: 5.985 min  
 Response: 0  
 Conc: N.D.



#32 AR-1260-2

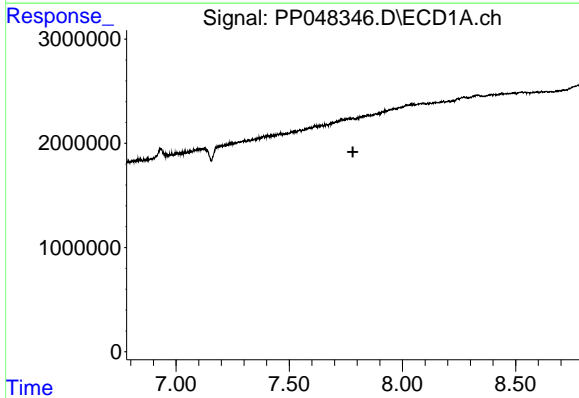
R.T.: 0.000 min  
 Exp R.T. : 7.384 min  
 Response: 0  
 Conc: N.D.

Instrument :  
 ECD\_P  
 ClientSampleId :



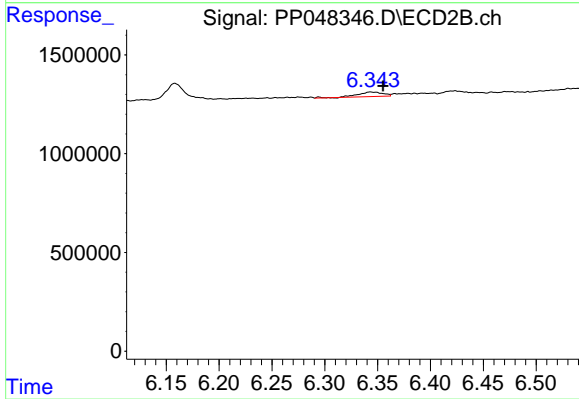
#32 AR-1260-2

R.T.: 6.201 min  
 Delta R.T.: 0.011 min  
 Response: 35692  
 Conc: 0.35 ng/ml



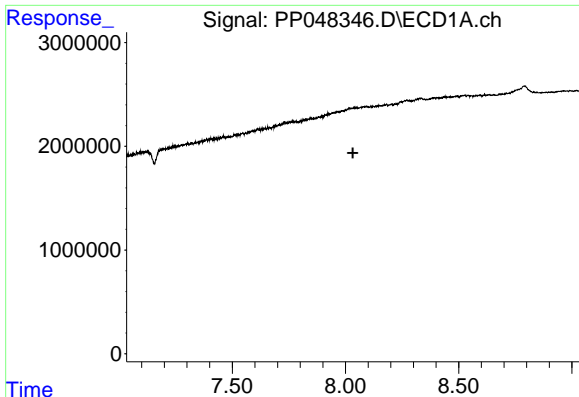
#33 AR-1260-3

R.T.: 0.000 min  
 Exp R.T. : 7.781 min  
 Response: 0  
 Conc: N.D.



#33 AR-1260-3

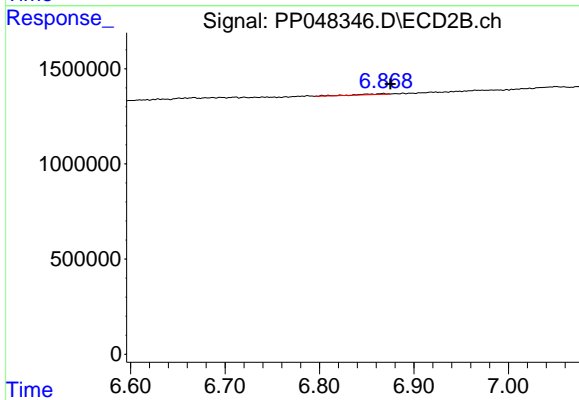
R.T.: 6.343 min  
 Delta R.T.: -0.012 min  
 Response: 374147  
 Conc: 3.78 ng/ml



#34 AR-1260-4

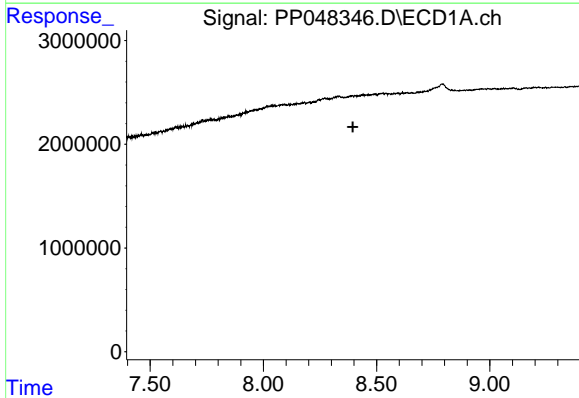
R.T.: 0.000 min  
 Exp R.T. : 8.033 min  
 Response: 0  
 Conc: N.D.

Instrument :  
 ECD\_P  
 ClientSampleId :



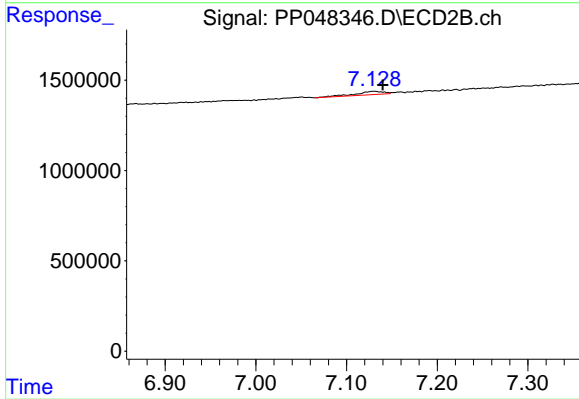
#34 AR-1260-4

R.T.: 6.868 min  
 Delta R.T.: -0.007 min  
 Response: 80988  
 Conc: 0.97 ng/ml



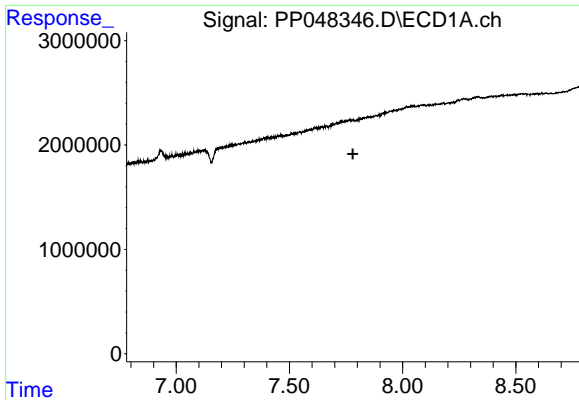
#35 AR-1260-5

R.T.: 0.000 min  
 Exp R.T. : 8.396 min  
 Response: 0  
 Conc: N.D.



#35 AR-1260-5

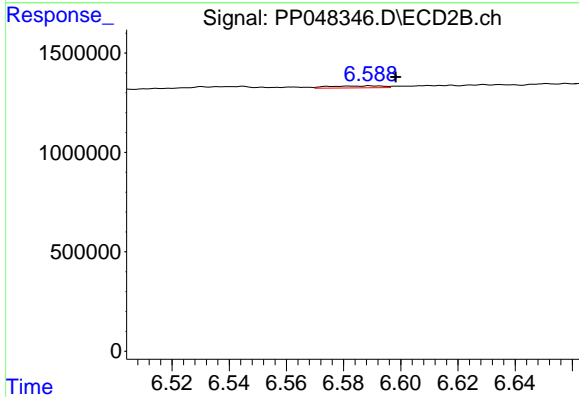
R.T.: 7.130 min  
 Delta R.T.: -0.010 min  
 Response: 394959  
 Conc: 1.99 ng/ml



#36 AR-1262-1

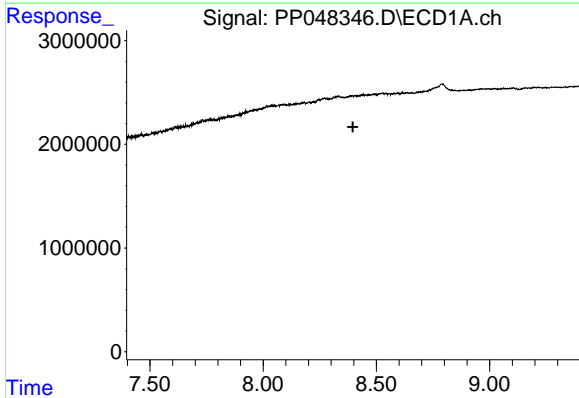
R.T.: 0.000 min  
 Exp R.T.: 7.780 min  
 Response: 0  
 Conc: N.D.

Instrument :  
 ECD\_P  
 ClientSampleId :



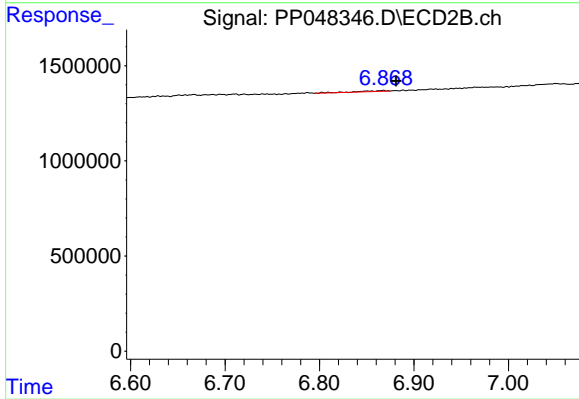
#36 AR-1262-1

R.T.: 6.589 min  
 Delta R.T.: -0.009 min  
 Response: 131034  
 Conc: 1.21 ng/ml



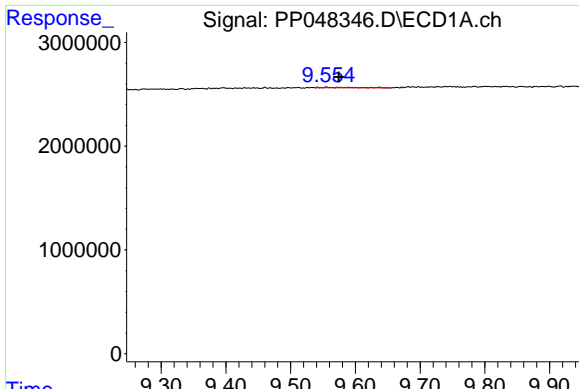
#37 AR-1262-2

R.T.: 0.000 min  
 Exp R.T.: 8.396 min  
 Response: 0  
 Conc: N.D.



#37 AR-1262-2

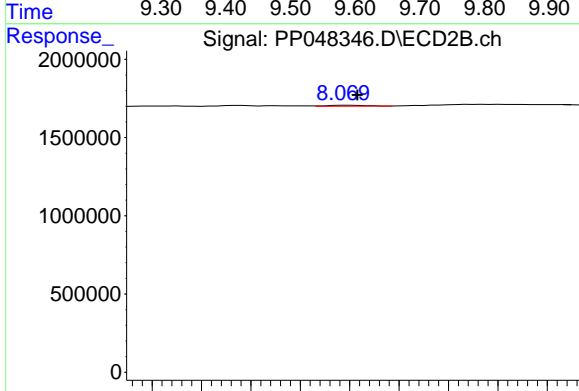
R.T.: 6.868 min  
 Delta R.T.: -0.013 min  
 Response: 80988  
 Conc: 0.82 ng/ml



#40 AR-1262-5

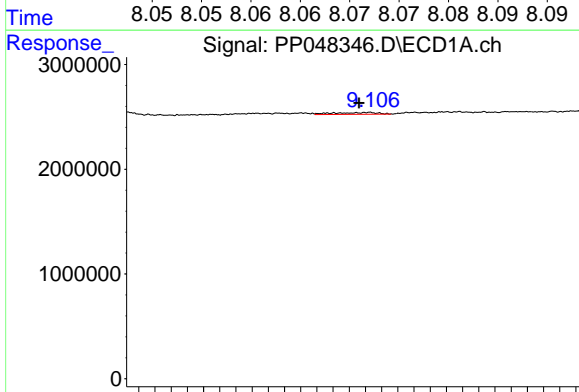
R.T.: 9.590 min  
 Delta R.T.: 0.016 min  
 Response: 177040  
 Conc: 2.24 ng/ml

Instrument :  
 ECD\_P  
 ClientSampleId :



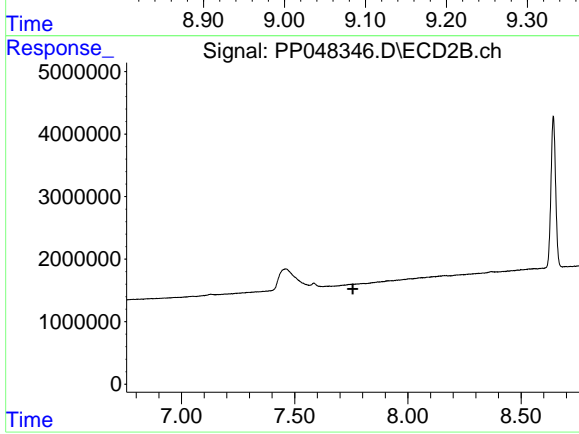
#40 AR-1262-5

R.T.: 8.070 min  
 Delta R.T.: 0.000 min  
 Response: 16899  
 Conc: 0.25 ng/ml



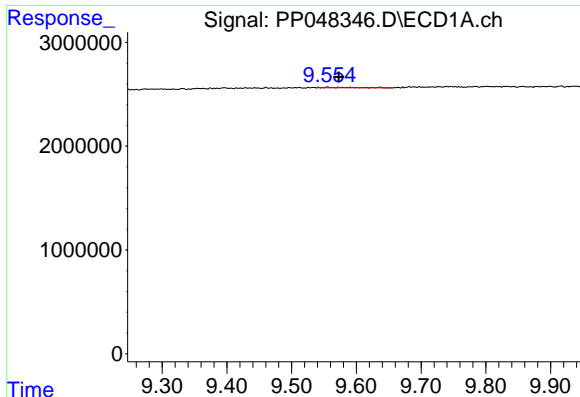
#43 AR-1268-3

R.T.: 9.103 min  
 Delta R.T.: 0.011 min  
 Response: 670828  
 Conc: 3.26 ng/ml



#43 AR-1268-3

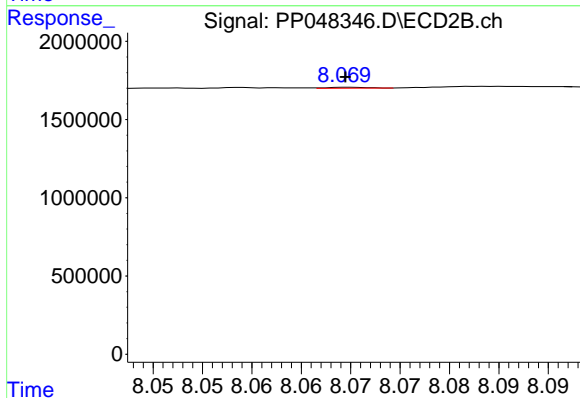
R.T.: 0.000 min  
 Exp R.T. : 7.757 min  
 Response: 0  
 Conc: N.D.



#44 AR-1268-4

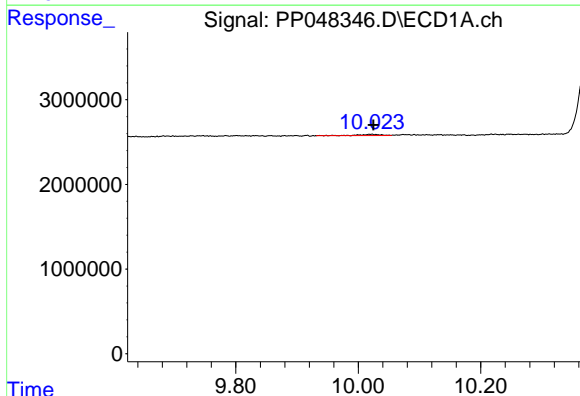
R.T.: 9.590 min  
 Delta R.T.: 0.018 min  
 Response: 177040  
 Conc: 1.97 ng/ml

Instrument :  
 ECD\_P  
 ClientSampleId :



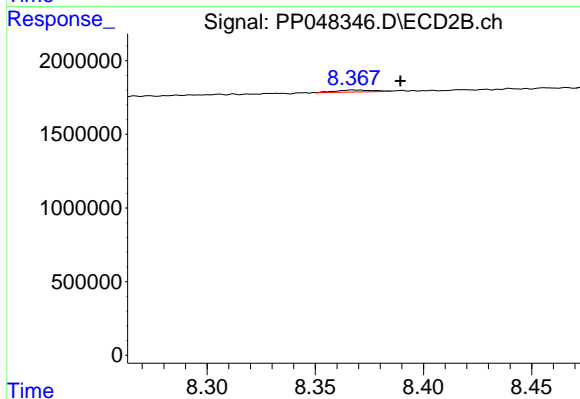
#44 AR-1268-4

R.T.: 8.070 min  
 Delta R.T.: 0.000 min  
 Response: 16899  
 Conc: 0.21 ng/ml



#45 AR-1268-5

R.T.: 10.022 min  
 Delta R.T.: -0.003 min  
 Response: 372263  
 Conc: 0.53 ng/ml



#45 AR-1268-5

R.T.: 8.368 min  
 Delta R.T.: -0.022 min  
 Response: 161913  
 Conc: 0.27 ng/ml