

Data Path : Z:\pestpcbsrv\HPCHEM1\ECD\_P\Data\PP060222\  
 Data File : PP048357.D  
 Signal(s) : Signal #1: ECD1A.ch Signal #2: ECD2B.ch  
 Acq On : 03 Jun 2022 00:42  
 Operator : YP\AJ  
 Sample : N2989-09  
 Misc :  
 ALS Vial : 54 Sample Multiplier: 1

Instrument :  
 ECD\_P  
 ClientSampleId :

Integration File signal 1: autoint1.e  
 Integration File signal 2: autoint2.e  
 Quant Time: Jun 03 02:41:58 2022  
 Quant Method : Z:\pestpcbsrv\HPCHEM1\ECD\_P\methods\PP052722.M  
 Quant Title : GC EXTRACTABLES  
 QLast Update : Fri May 27 23:53:39 2022  
 Response via : Initial Calibration  
 Integrator: ChemStation

Volume Inj. : 2 µl  
 Signal #1 Phase : ZB-MR1 Signal #2 Phase: ZB-MR2  
 Signal #1 Info : 30Mx0.32mmx 0.50µ Signal #2 Info : 30M x 0.32mm x 0.25µm

Compound	RT#1	RT#2	Resp#1	Resp#2	ng/ml	ng/ml
System Monitoring Compounds						
1) SA Tetrachlo...	4.034	3.214	49669494	40062149	21.210	20.328
2) SA Decachlor...	10.385	8.642	25860332	22003368	13.305	13.612
Target Compounds						
4) L1 AR-1016-2	0.000	4.420	0	140868	N.D.	1.513 #
5) L1 AR-1016-3	5.408	0.000	836064	0	12.372	N.D. #
6) L1 AR-1016-4	5.543f	0.000	285639	0	4.634	N.D. #
8) L2 AR-1221-1	4.271	0.000	2047596	0	77.454	N.D. #
9) L2 AR-1221-2	4.368	3.526f	1082878	613682	52.872	39.954
10) L2 AR-1221-3	4.448	0.000	503896	0	8.048	N.D. #
11) L3 AR-1232-1	4.448	0.000	503896	0	9.701	N.D. #
12) L3 AR-1232-2	5.040	4.420	490646	140868	20.437	3.496 #
14) L3 AR-1232-4	5.543f	0.000	285639	0	11.949	N.D. #
17) L4 AR-1242-2	0.000	4.420	0	140868	N.D.	2.120 #
18) L4 AR-1242-3	5.408	0.000	836064	0	17.031	N.D. #
19) L4 AR-1242-4	5.543f	0.000	285639	0	7.218	N.D. #
20) L4 AR-1242-5	0.000	5.244	0	68394	N.D.	1.638 #
24) L5 AR-1248-4	6.275f	0.000	1814629	0	23.334	N.D. #
26) L6 AR-1254-1	6.275	5.244	1814629	68394	24.996	0.780 #
27) L6 AR-1254-2	6.505	5.397	4099810	328557	34.456	4.373 #
28) L6 AR-1254-3	6.936f	5.851	1217421	1733890	10.248	14.132 #
29) L6 AR-1254-4	7.230	6.083	1817101	284089	20.145	3.783 #
30) L6 AR-1254-5	7.695	6.536f	24916059	20992895	268.884	207.364
31) L7 AR-1260-1	7.092	5.974	4335606	2535348	46.451	29.617 #
32) L7 AR-1260-2	7.380	6.181	10192525	9022484	91.179	87.531
33) L7 AR-1260-3	7.777	6.347	22460089	5158689	262.210	52.096 #
34) L7 AR-1260-4	8.029	6.863	19459412	13686794	187.548	164.405
35) L7 AR-1260-5	8.392	7.128	42574736	41821503	206.316	210.781
36) L8 AR-1262-1	7.777	6.580f	22460089	21916369	196.933	202.850
37) L8 AR-1262-2	8.392	6.863f	42574736	13686794	199.742	138.300 #
38) L8 AR-1262-3	8.758f	7.439f	31666785	12168439	339.795	161.697 #
39) L8 AR-1262-4	8.815f	7.507f	13267295	30346755	223.136	208.359
40) L8 AR-1262-5	9.567	8.051f	12890360	12965395	162.865	192.100
41) L9 AR-1268-1	8.758f	7.439f	31666785	12168439	119.708	52.103 #
42) L9 AR-1268-2	8.815f	7.507f	13267295	30346755	54.938	140.258 #
43) L9 AR-1268-3	9.084	7.736f	1058720	343149	5.150	1.846 #
44) L9 AR-1268-4	9.567	8.051f	12890360	12965395	143.498	157.825
45) L9 AR-1268-5	10.021	8.368f	2949716	1918416	4.178	3.166

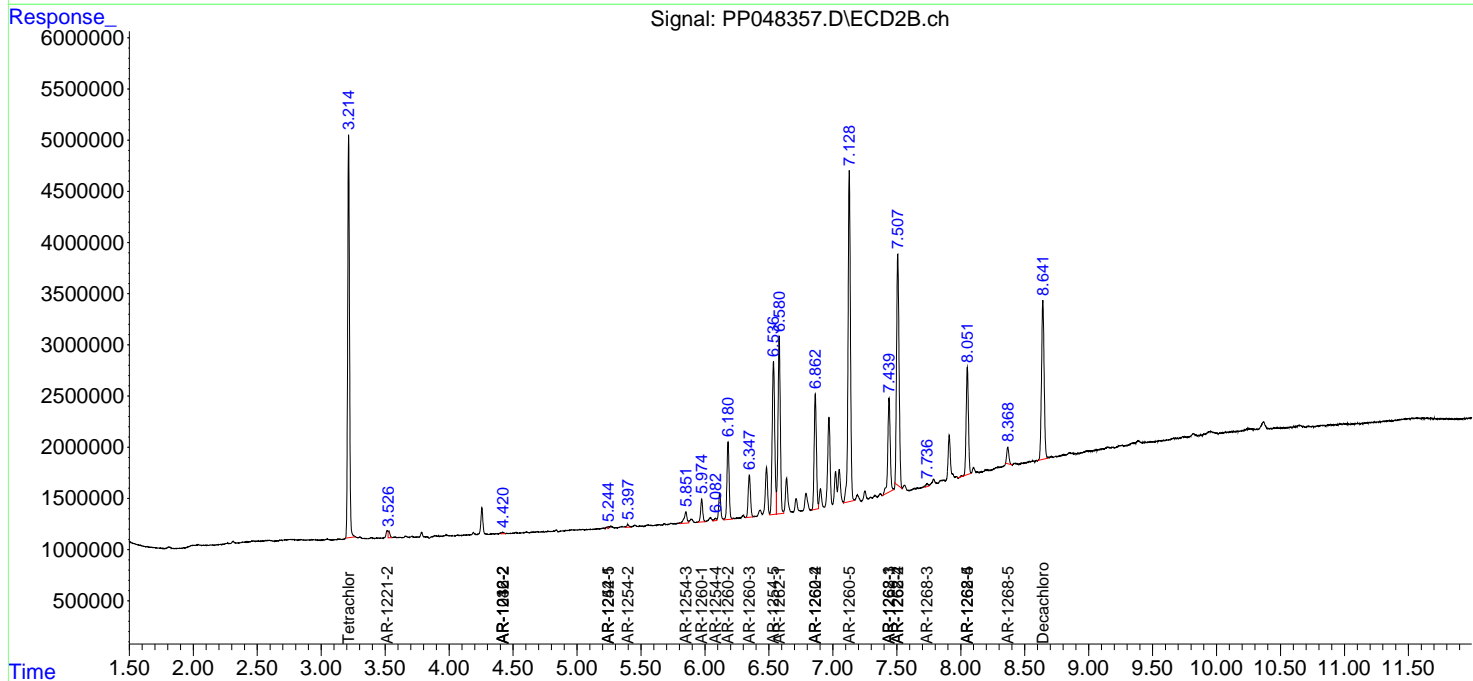
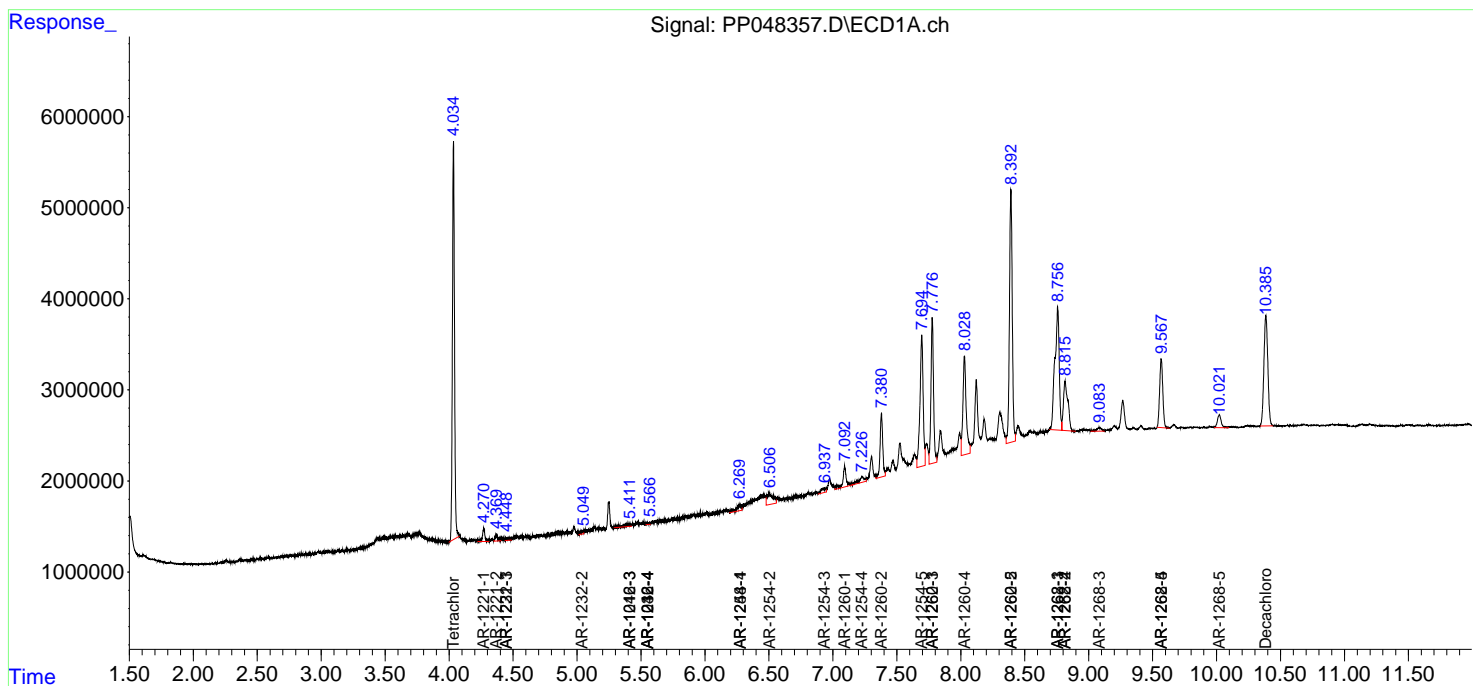
(f)=RT Delta > 1/2 Window (#)=Amounts differ by > 25% (m)=manual int.

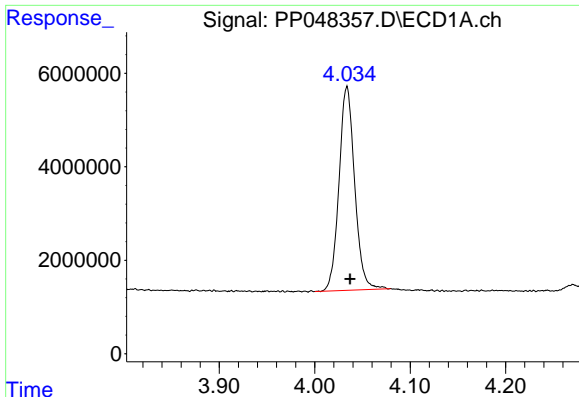
Data Path : Z:\pestpcbsrv\HPCHEM1\ECD\_P\Data\PP060222\  
 Data File : PP048357.D  
 Signal(s) : Signal #1: ECD1A.ch Signal #2: ECD2B.ch  
 Acq On : 03 Jun 2022 00:42  
 Operator : YP\AJ  
 Sample : N2989-09  
 Misc :  
 ALS Vial : 54 Sample Multiplier: 1

Instrument :  
 ECD\_P  
 ClientSampleId :

Integration File signal 1: autoint1.e  
 Integration File signal 2: autoint2.e  
 Quant Time: Jun 03 02:41:58 2022  
 Quant Method : Z:\pestpcbsrv\HPCHEM1\ECD\_P\methods\PP052722.M  
 Quant Title : GC EXTRACTABLES  
 QLast Update : Fri May 27 23:53:39 2022  
 Response via : Initial Calibration  
 Integrator: ChemStation

Volume Inj. : 2 µl  
 Signal #1 Phase : ZB-MR1 Signal #2 Phase: ZB-MR2  
 Signal #1 Info : 30Mx0.32mmx 0.50µ Signal #2 Info : 30M x 0.32mm x 0.25µm

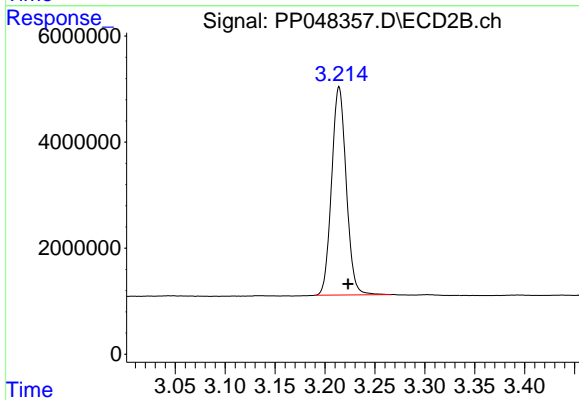




#1 Tetrachloro-m-xylene

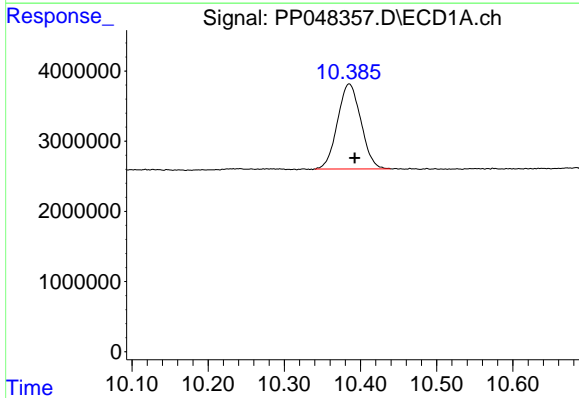
R.T.: 4.034 min  
 Delta R.T.: -0.003 min  
 Response: 49669494  
 Conc: 21.21 ng/ml

Instrument :  
 ECD\_P  
 ClientSampleId :



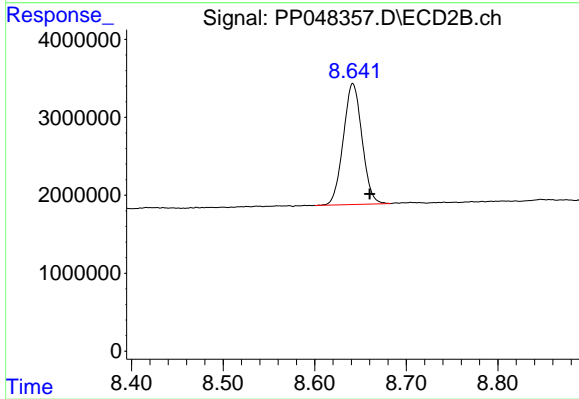
#1 Tetrachloro-m-xylene

R.T.: 3.214 min  
 Delta R.T.: -0.009 min  
 Response: 40062149  
 Conc: 20.33 ng/ml



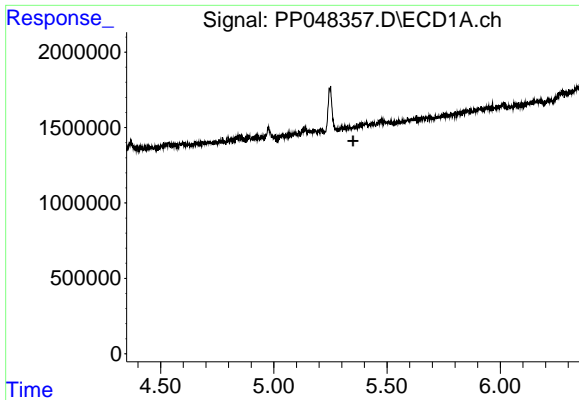
#2 Decachlorobiphenyl

R.T.: 10.385 min  
 Delta R.T.: -0.007 min  
 Response: 25860332  
 Conc: 13.31 ng/ml



#2 Decachlorobiphenyl

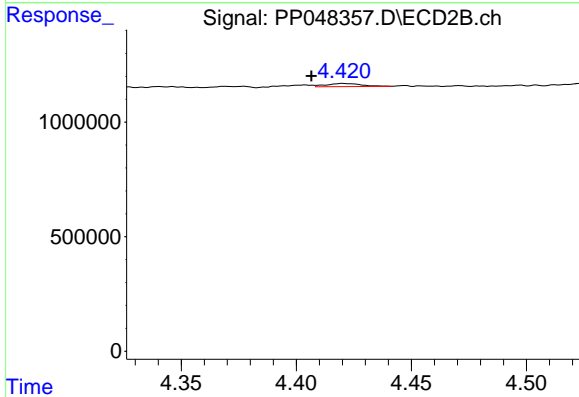
R.T.: 8.642 min  
 Delta R.T.: -0.018 min  
 Response: 22003368  
 Conc: 13.61 ng/ml



#4 AR-1016-2

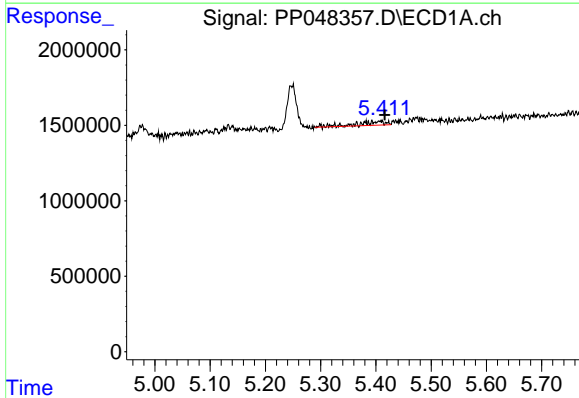
R.T.: 0.000 min  
 Exp R.T.: 5.350 min  
 Response: 0  
 Conc: N.D.

Instrument :  
 ECD\_P  
 ClientSampleId :



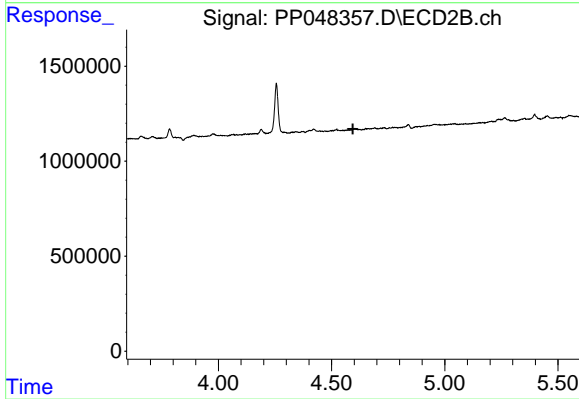
#4 AR-1016-2

R.T.: 4.420 min  
 Delta R.T.: 0.014 min  
 Response: 140868  
 Conc: 1.51 ng/ml



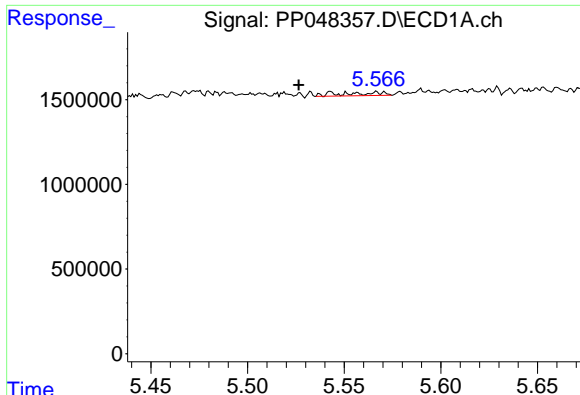
#5 AR-1016-3

R.T.: 5.408 min  
 Delta R.T.: -0.009 min  
 Response: 836064  
 Conc: 12.37 ng/ml



#5 AR-1016-3

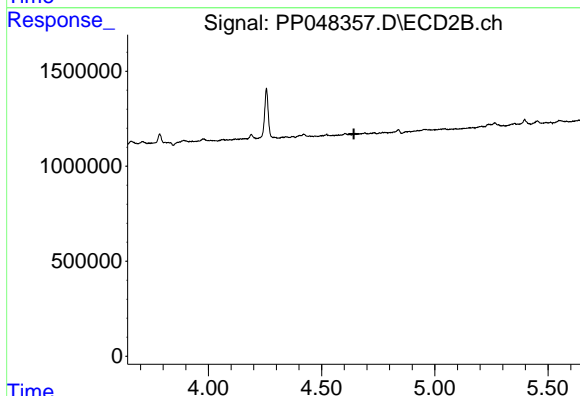
R.T.: 0.000 min  
 Exp R.T.: 4.594 min  
 Response: 0  
 Conc: N.D.



#6 AR-1016-4

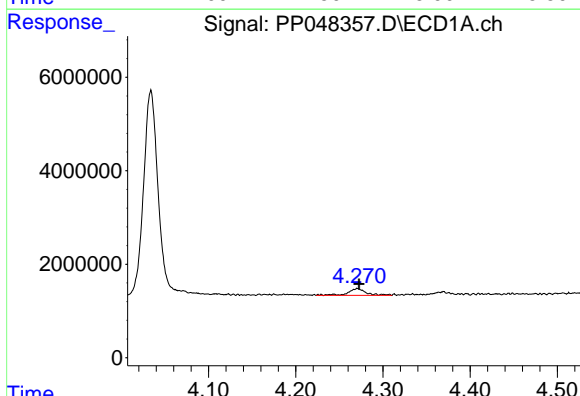
R.T.: 5.543 min  
 Delta R.T.: 0.017 min  
 Response: 285639  
 Conc: 4.63 ng/ml

Instrument :  
 ECD\_P  
 ClientSampleId :



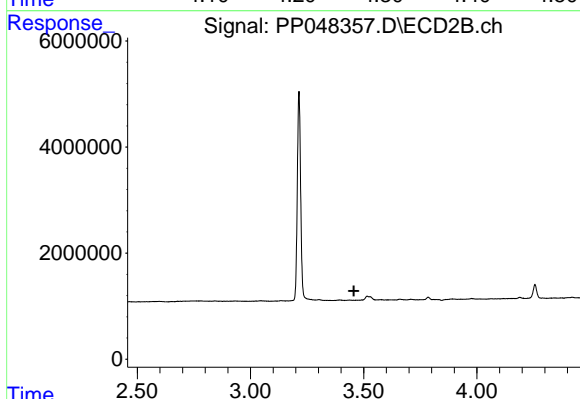
#6 AR-1016-4

R.T.: 0.000 min  
 Exp R.T. : 4.643 min  
 Response: 0  
 Conc: N.D.



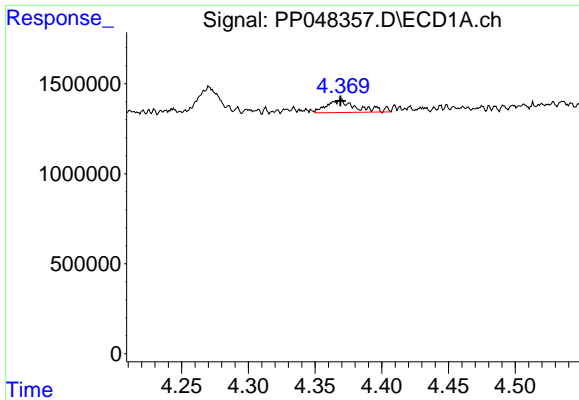
#8 AR-1221-1

R.T.: 4.271 min  
 Delta R.T.: -0.002 min  
 Response: 2047596  
 Conc: 77.45 ng/ml



#8 AR-1221-1

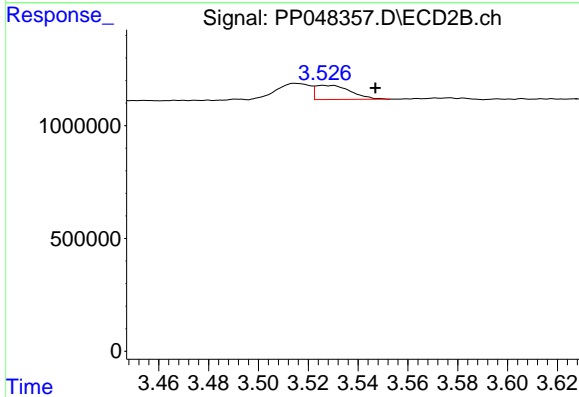
R.T.: 0.000 min  
 Exp R.T. : 3.457 min  
 Response: 0  
 Conc: N.D.



#9 AR-1221-2

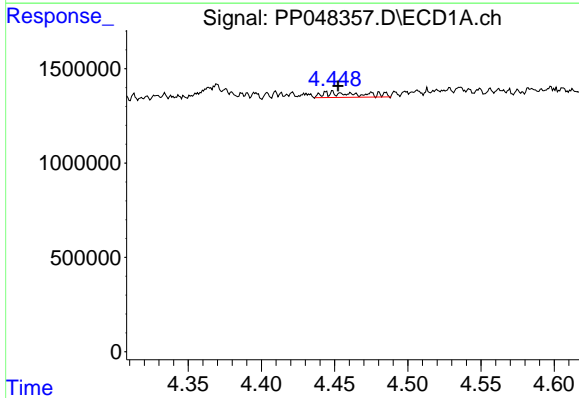
R.T.: 4.368 min  
 Delta R.T.: 0.000 min  
 Response: 1082878  
 Conc: 52.87 ng/ml

Instrument :  
 ECD\_P  
 ClientSampleId :



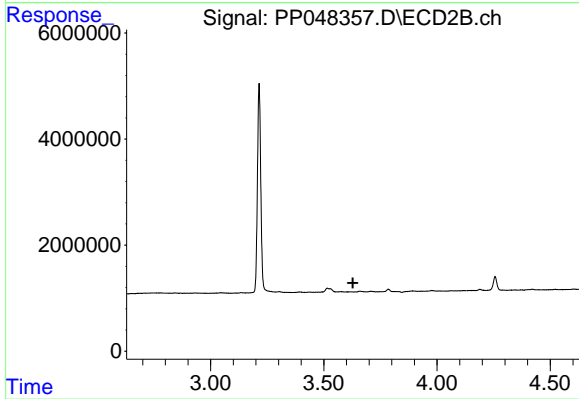
#9 AR-1221-2

R.T.: 3.526 min  
 Delta R.T.: -0.021 min  
 Response: 613682  
 Conc: 39.95 ng/ml



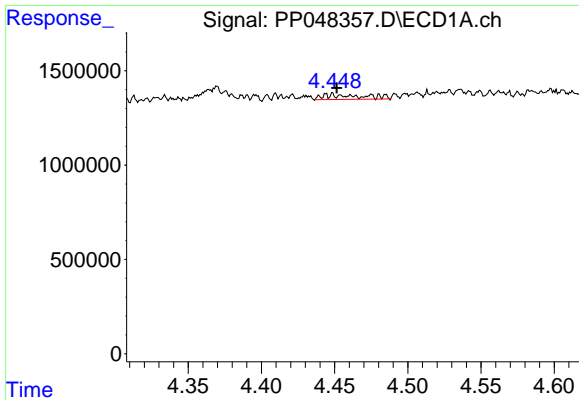
#10 AR-1221-3

R.T.: 4.448 min  
 Delta R.T.: -0.004 min  
 Response: 503896  
 Conc: 8.05 ng/ml



#10 AR-1221-3

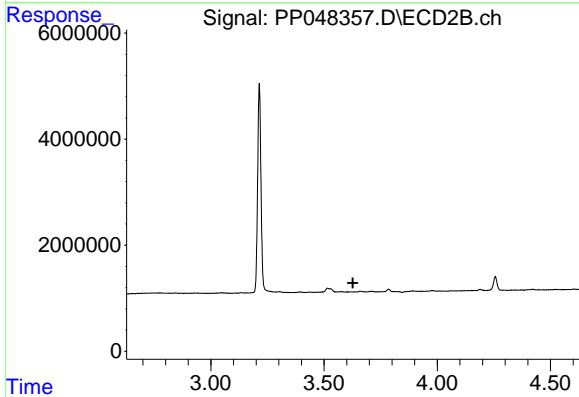
R.T.: 0.000 min  
 Exp R.T.: 3.628 min  
 Response: 0  
 Conc: N.D.



#11 AR-1232-1

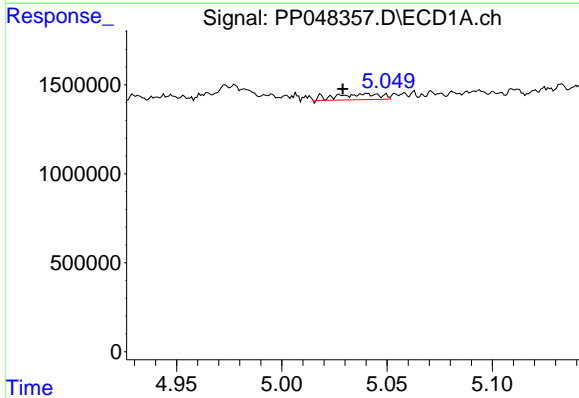
R.T.: 4.448 min  
 Delta R.T.: -0.003 min  
 Response: 503896  
 Conc: 9.70 ng/ml

Instrument :  
 ECD\_P  
 ClientSampleId :



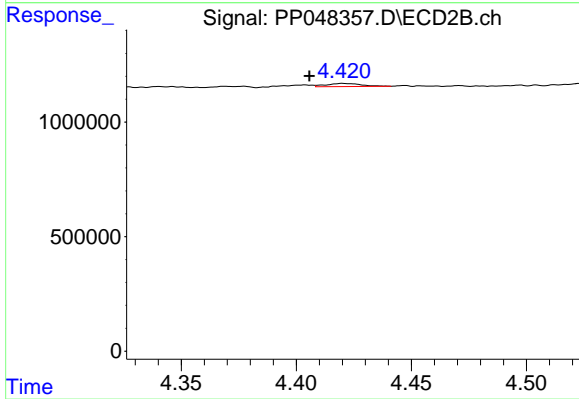
#11 AR-1232-1

R.T.: 0.000 min  
 Exp R.T. : 3.627 min  
 Response: 0  
 Conc: N.D.



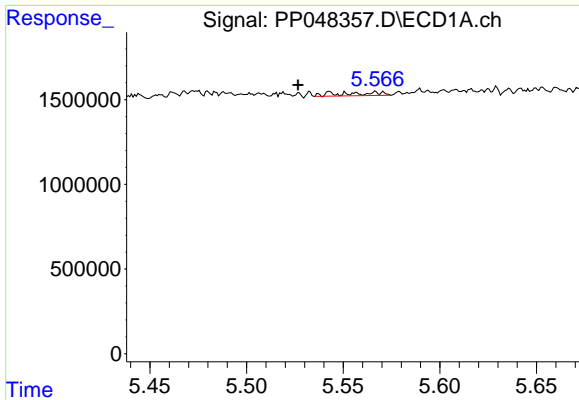
#12 AR-1232-2

R.T.: 5.040 min  
 Delta R.T.: 0.011 min  
 Response: 490646  
 Conc: 20.44 ng/ml



#12 AR-1232-2

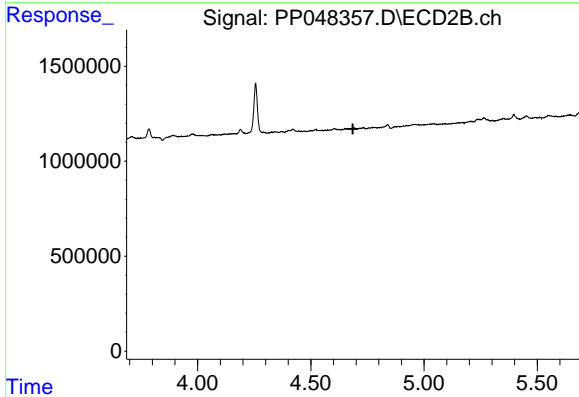
R.T.: 4.420 min  
 Delta R.T.: 0.014 min  
 Response: 140868  
 Conc: 3.50 ng/ml



#14 AR-1232-4

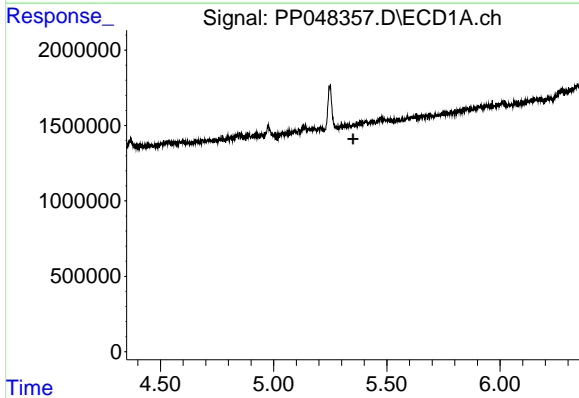
R.T.: 5.543 min  
 Delta R.T.: 0.017 min  
 Response: 285639  
 Conc: 11.95 ng/ml

Instrument :  
 ECD\_P  
 ClientSampleId :



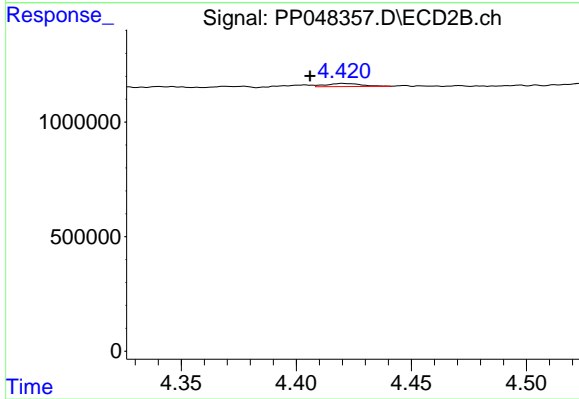
#14 AR-1232-4

R.T.: 0.000 min  
 Exp R.T. : 4.686 min  
 Response: 0  
 Conc: N.D.



#17 AR-1242-2

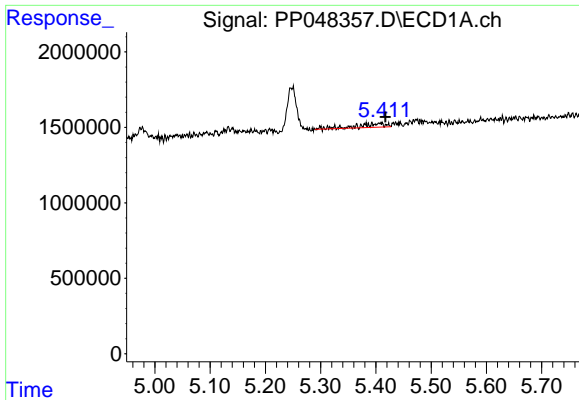
R.T.: 0.000 min  
 Exp R.T. : 5.350 min  
 Response: 0  
 Conc: N.D.



#17 AR-1242-2

R.T.: 4.420 min  
 Delta R.T.: 0.014 min  
 Response: 140868  
 Conc: 2.12 ng/ml

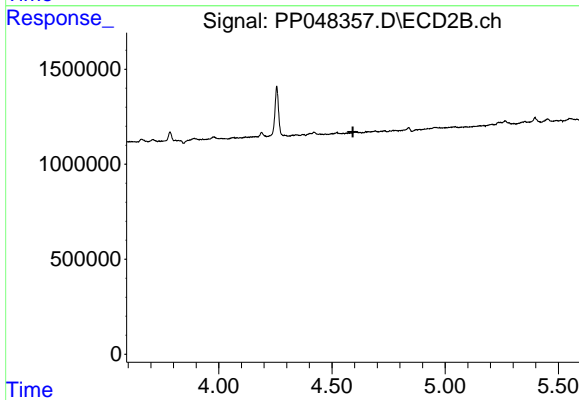




#18 AR-1242-3

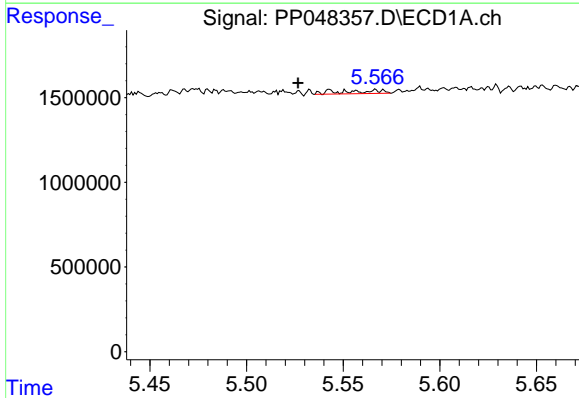
R.T.: 5.408 min  
 Delta R.T.: -0.010 min  
 Response: 836064  
 Conc: 17.03 ng/ml

Instrument :  
 ECD\_P  
 ClientSampleId :



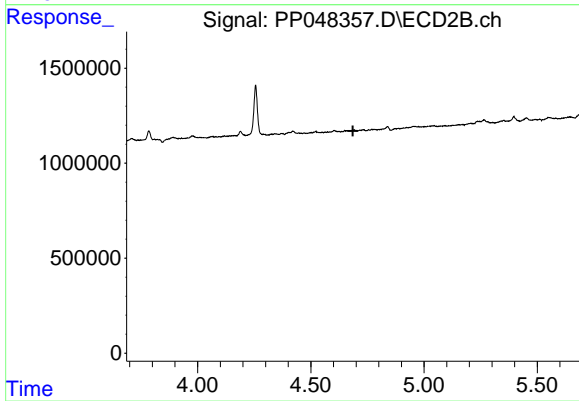
#18 AR-1242-3

R.T.: 0.000 min  
 Exp R.T. : 4.593 min  
 Response: 0  
 Conc: N.D.



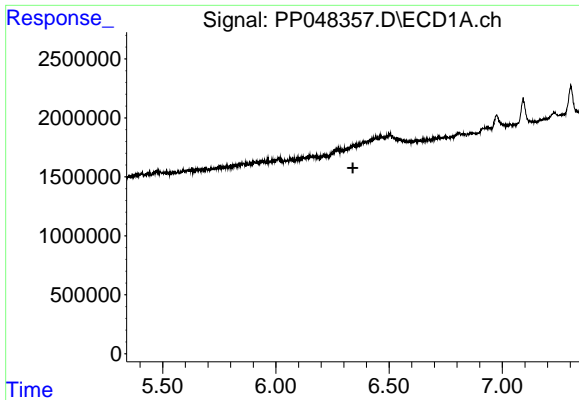
#19 AR-1242-4

R.T.: 5.543 min  
 Delta R.T.: 0.017 min  
 Response: 285639  
 Conc: 7.22 ng/ml



#19 AR-1242-4

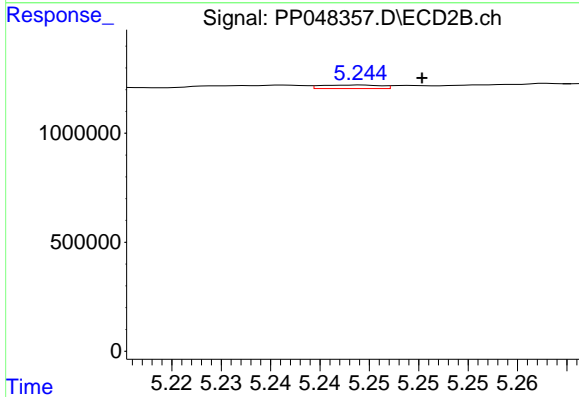
R.T.: 0.000 min  
 Exp R.T. : 4.686 min  
 Response: 0  
 Conc: N.D.



#20 AR-1242-5

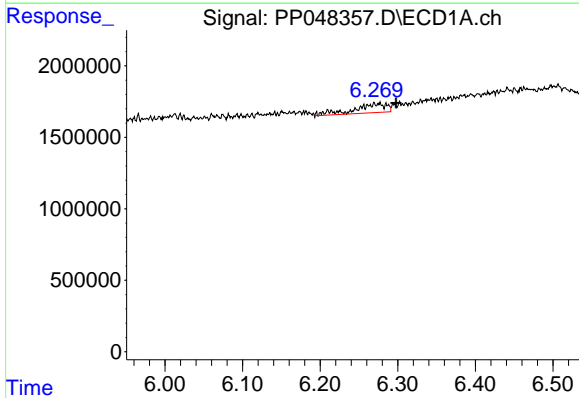
R.T.: 0.000 min  
 Exp R.T.: 6.340 min  
 Response: 0  
 Conc: N.D.

Instrument :  
 ECD\_P  
 ClientSampleId :



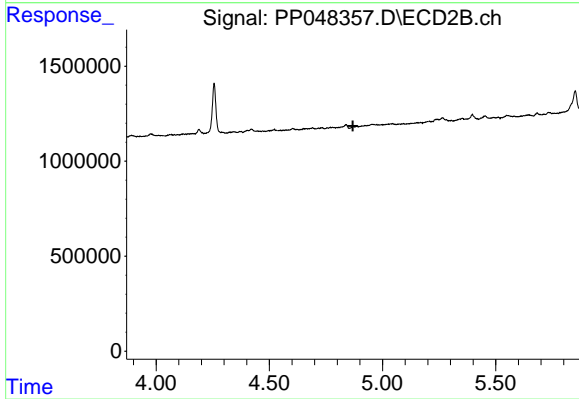
#20 AR-1242-5

R.T.: 5.244 min  
 Delta R.T.: -0.006 min  
 Response: 68394  
 Conc: 1.64 ng/ml



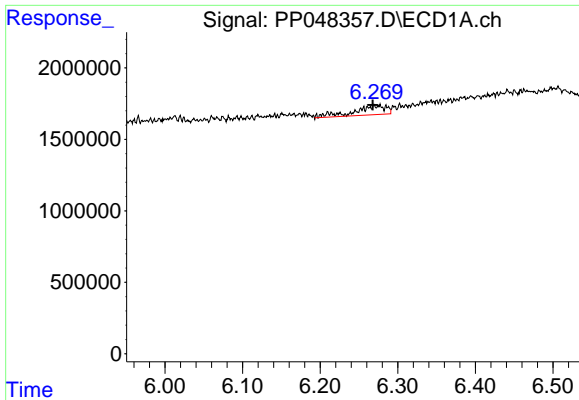
#24 AR-1248-4

R.T.: 6.275 min  
 Delta R.T.: -0.023 min  
 Response: 1814629  
 Conc: 23.33 ng/ml



#24 AR-1248-4

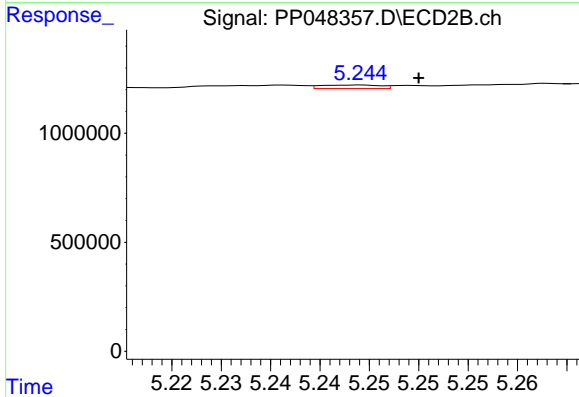
R.T.: 0.000 min  
 Exp R.T.: 4.869 min  
 Response: 0  
 Conc: N.D.



#26 AR-1254-1

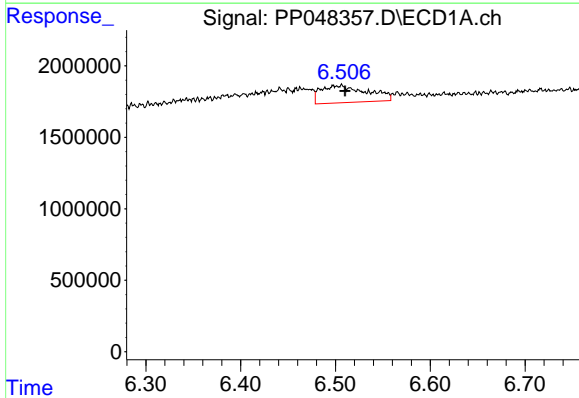
R.T.: 6.275 min  
 Delta R.T.: 0.007 min  
 Response: 1814629  
 Conc: 25.00 ng/ml

Instrument :  
 ECD\_P  
 ClientSampleId :



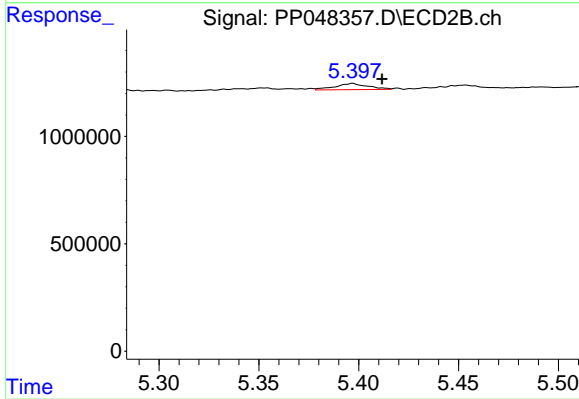
#26 AR-1254-1

R.T.: 5.244 min  
 Delta R.T.: -0.006 min  
 Response: 68394  
 Conc: 0.78 ng/ml



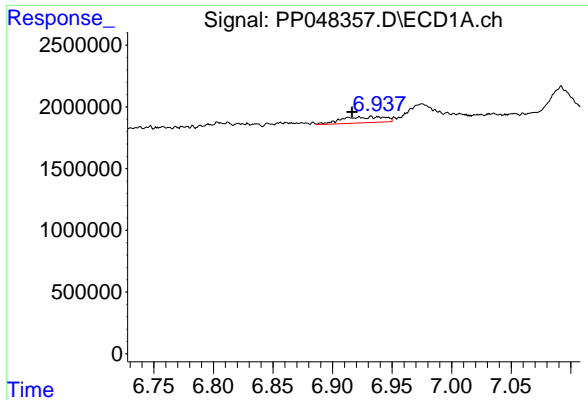
#27 AR-1254-2

R.T.: 6.505 min  
 Delta R.T.: -0.006 min  
 Response: 4099810  
 Conc: 34.46 ng/ml



#27 AR-1254-2

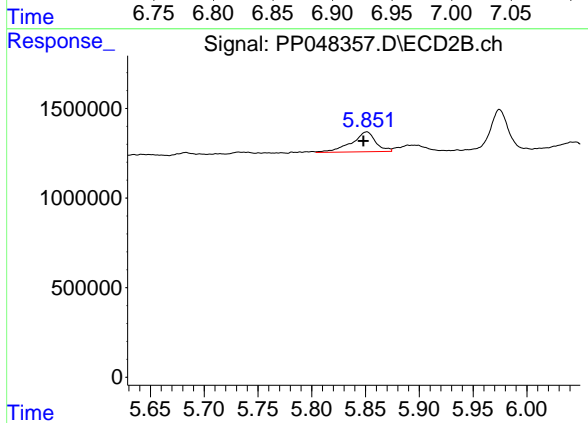
R.T.: 5.397 min  
 Delta R.T.: -0.015 min  
 Response: 328557  
 Conc: 4.37 ng/ml



#28 AR-1254-3

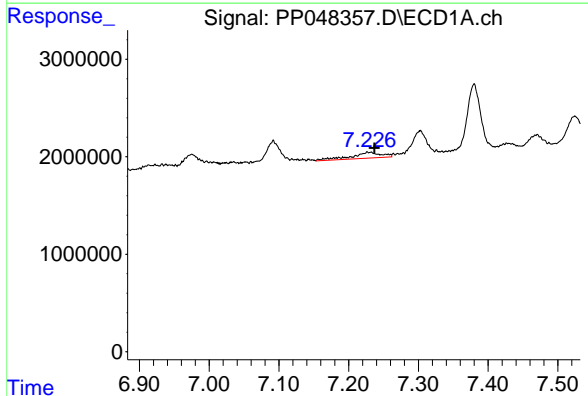
R.T.: 6.936 min  
 Delta R.T.: 0.020 min  
 Response: 1217421  
 Conc: 10.25 ng/ml

Instrument :  
 ECD\_P  
 ClientSampleId :



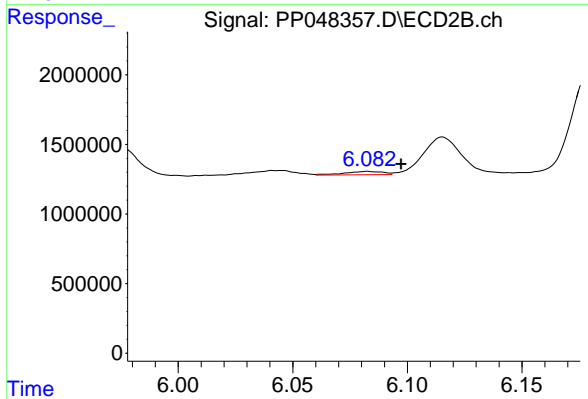
#28 AR-1254-3

R.T.: 5.851 min  
 Delta R.T.: 0.003 min  
 Response: 1733890  
 Conc: 14.13 ng/ml



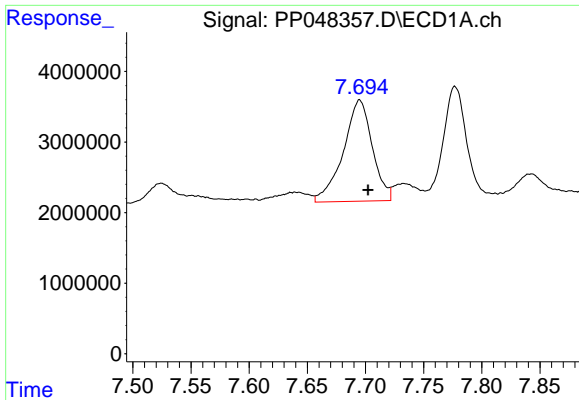
#29 AR-1254-4

R.T.: 7.230 min  
 Delta R.T.: -0.007 min  
 Response: 1817101  
 Conc: 20.15 ng/ml



#29 AR-1254-4

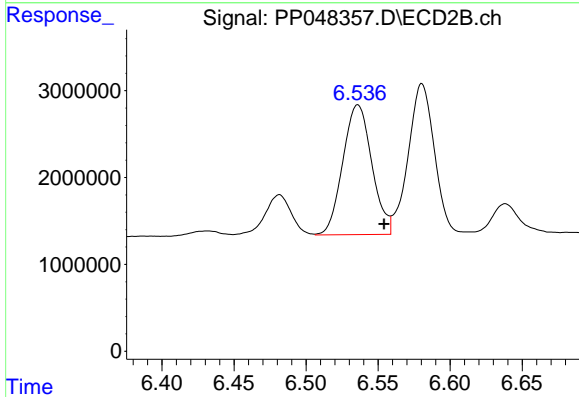
R.T.: 6.083 min  
 Delta R.T.: -0.015 min  
 Response: 284089  
 Conc: 3.78 ng/ml



#30 AR-1254-5

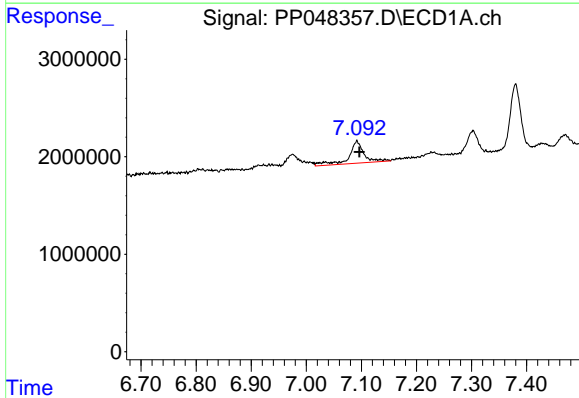
R.T.: 7.695 min  
 Delta R.T.: -0.007 min  
 Response: 24916059  
 Conc: 268.88 ng/ml

Instrument :  
 ECD\_P  
 ClientSampleId :



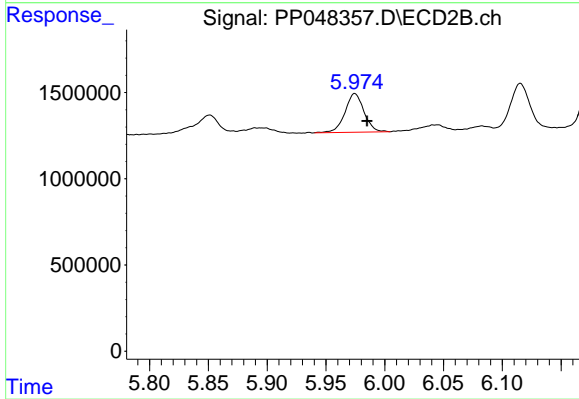
#30 AR-1254-5

R.T.: 6.536 min  
 Delta R.T.: -0.018 min  
 Response: 20992895  
 Conc: 207.36 ng/ml



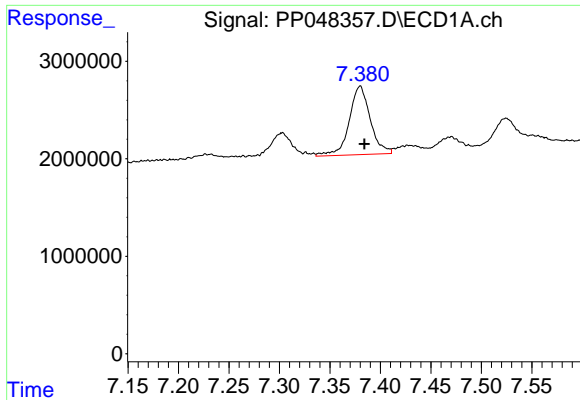
#31 AR-1260-1

R.T.: 7.092 min  
 Delta R.T.: -0.004 min  
 Response: 4335606  
 Conc: 46.45 ng/ml



#31 AR-1260-1

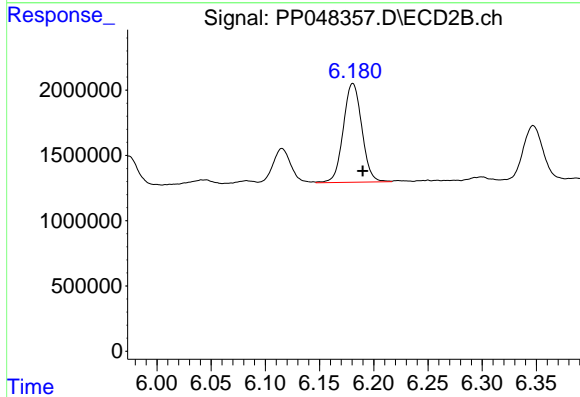
R.T.: 5.974 min  
 Delta R.T.: -0.011 min  
 Response: 2535348  
 Conc: 29.62 ng/ml



#32 AR-1260-2

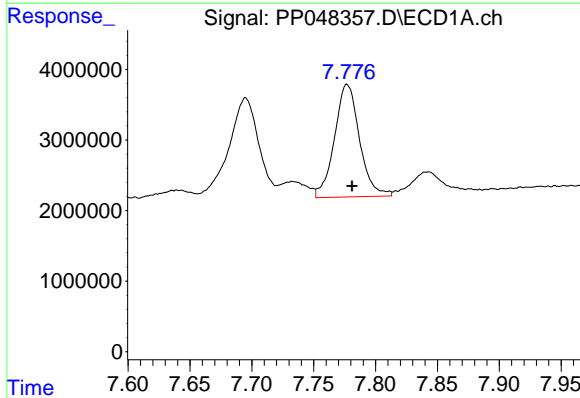
R.T.: 7.380 min  
 Delta R.T.: -0.004 min  
 Response: 10192525  
 Conc: 91.18 ng/ml

Instrument :  
 ECD\_P  
 ClientSampleId :



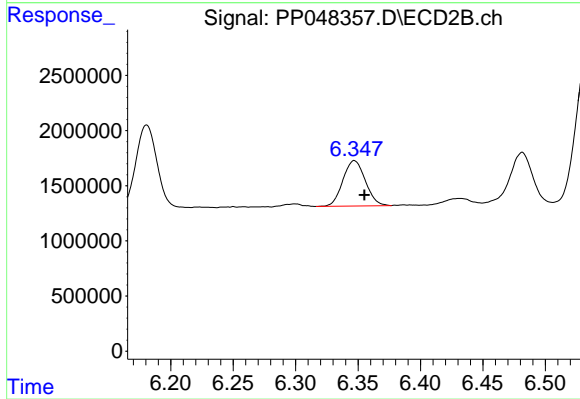
#32 AR-1260-2

R.T.: 6.181 min  
 Delta R.T.: -0.009 min  
 Response: 9022484  
 Conc: 87.53 ng/ml



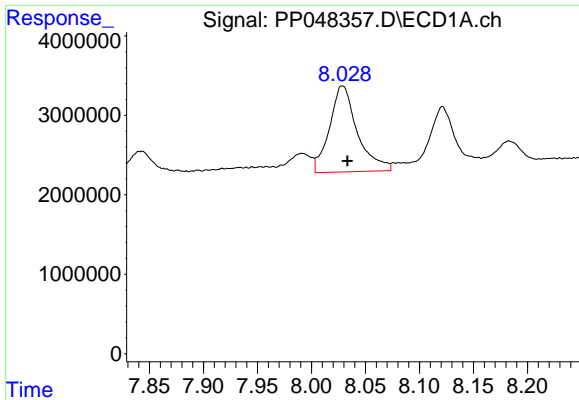
#33 AR-1260-3

R.T.: 7.777 min  
 Delta R.T.: -0.004 min  
 Response: 22460089  
 Conc: 262.21 ng/ml



#33 AR-1260-3

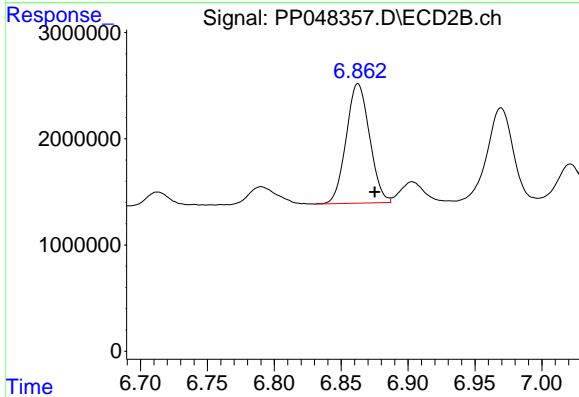
R.T.: 6.347 min  
 Delta R.T.: -0.008 min  
 Response: 5158689  
 Conc: 52.10 ng/ml



#34 AR-1260-4

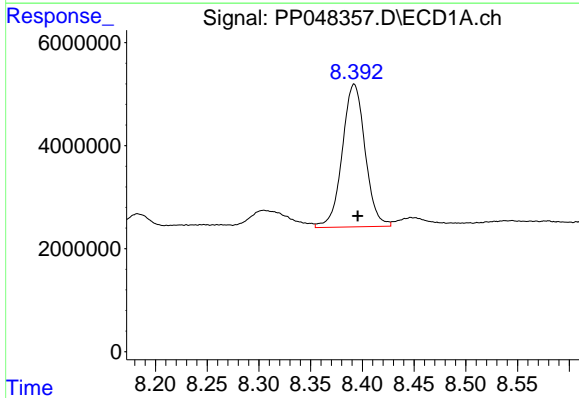
R.T.: 8.029 min  
 Delta R.T.: -0.004 min  
 Response: 19459412  
 Conc: 187.55 ng/ml

Instrument :  
 ECD\_P  
 ClientSampleId :



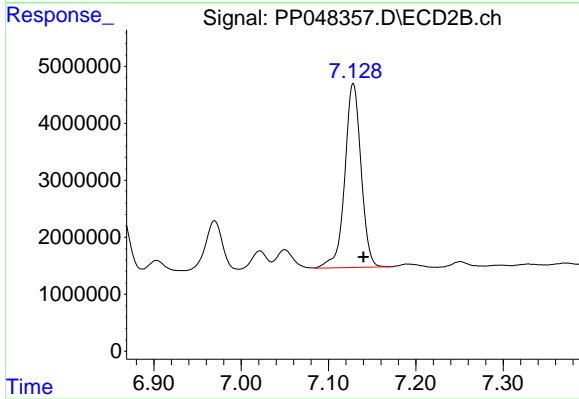
#34 AR-1260-4

R.T.: 6.863 min  
 Delta R.T.: -0.012 min  
 Response: 13686794  
 Conc: 164.40 ng/ml



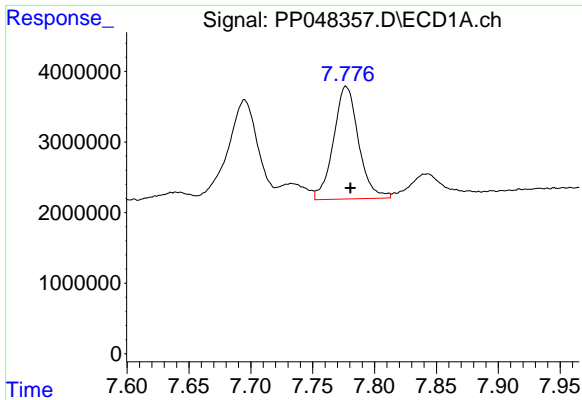
#35 AR-1260-5

R.T.: 8.392 min  
 Delta R.T.: -0.004 min  
 Response: 42574736  
 Conc: 206.32 ng/ml



#35 AR-1260-5

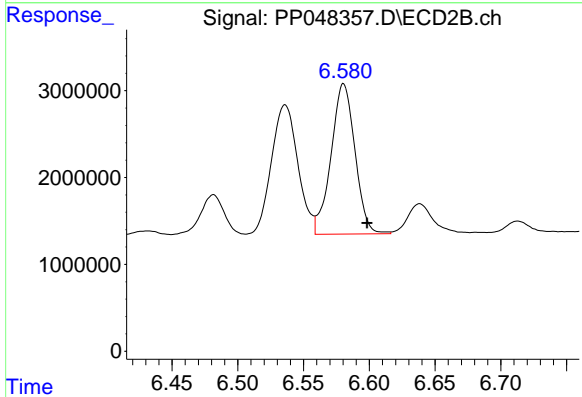
R.T.: 7.128 min  
 Delta R.T.: -0.012 min  
 Response: 41821503  
 Conc: 210.78 ng/ml



#36 AR-1262-1

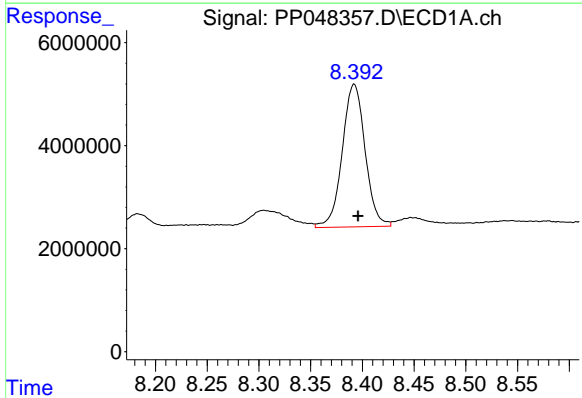
R.T.: 7.777 min  
 Delta R.T.: -0.003 min  
 Response: 22460089  
 Conc: 196.93 ng/ml

Instrument :  
 ECD\_P  
 ClientSampleId :



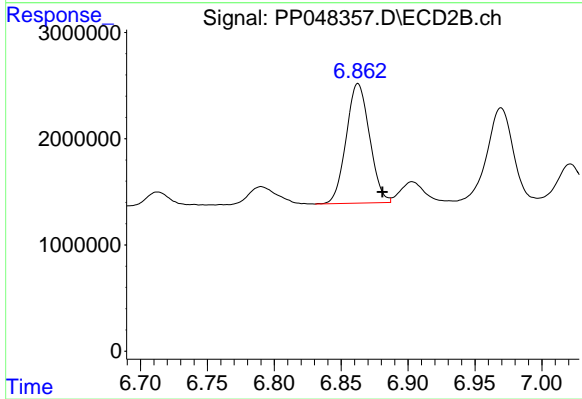
#36 AR-1262-1

R.T.: 6.580 min  
 Delta R.T.: -0.018 min  
 Response: 21916369  
 Conc: 202.85 ng/ml



#37 AR-1262-2

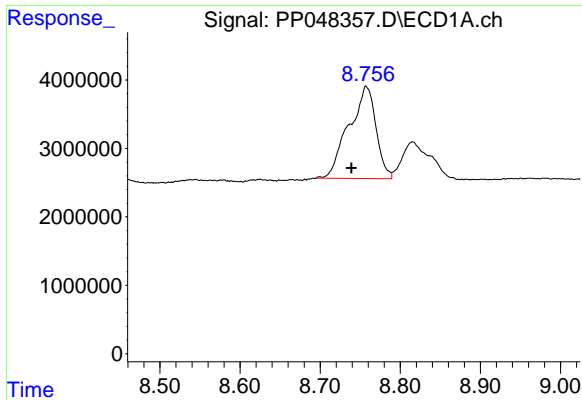
R.T.: 8.392 min  
 Delta R.T.: -0.004 min  
 Response: 42574736  
 Conc: 199.74 ng/ml



#37 AR-1262-2

R.T.: 6.863 min  
 Delta R.T.: -0.018 min  
 Response: 13686794  
 Conc: 138.30 ng/ml

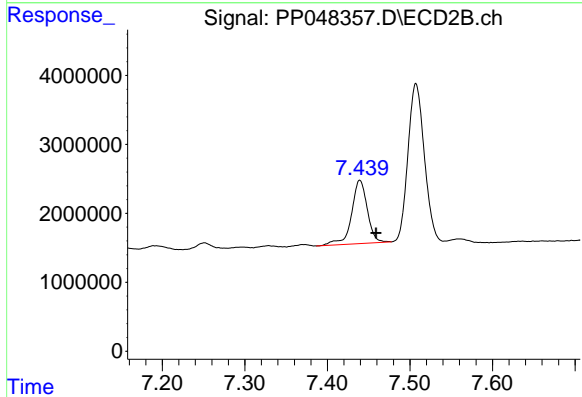




#38 AR-1262-3

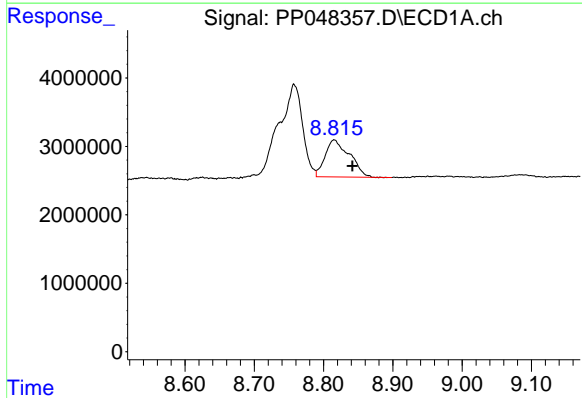
R.T.: 8.758 min  
 Delta R.T.: 0.019 min  
 Response: 31666785  
 Conc: 339.80 ng/ml

Instrument :  
 ECD\_P  
 ClientSampleId :



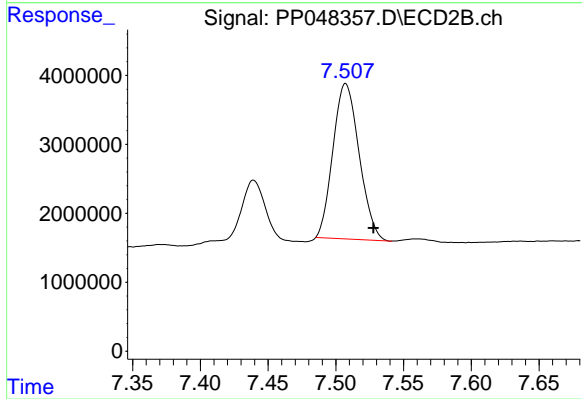
#38 AR-1262-3

R.T.: 7.439 min  
 Delta R.T.: -0.020 min  
 Response: 12168439  
 Conc: 161.70 ng/ml



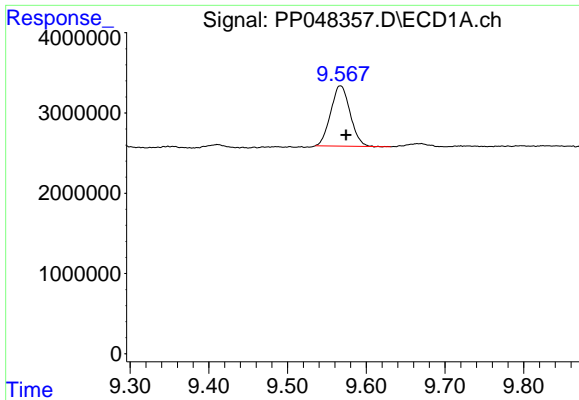
#39 AR-1262-4

R.T.: 8.815 min  
 Delta R.T.: -0.026 min  
 Response: 13267295  
 Conc: 223.14 ng/ml



#39 AR-1262-4

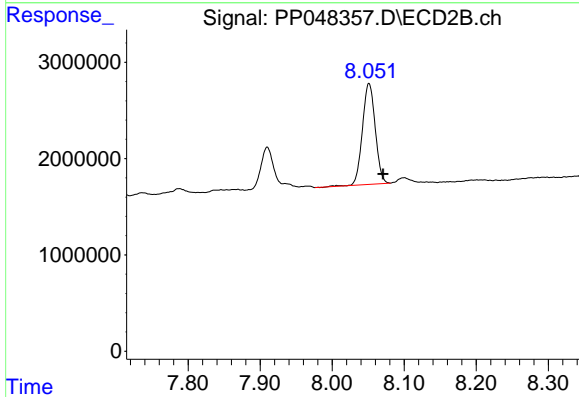
R.T.: 7.507 min  
 Delta R.T.: -0.021 min  
 Response: 30346755  
 Conc: 208.36 ng/ml



#40 AR-1262-5

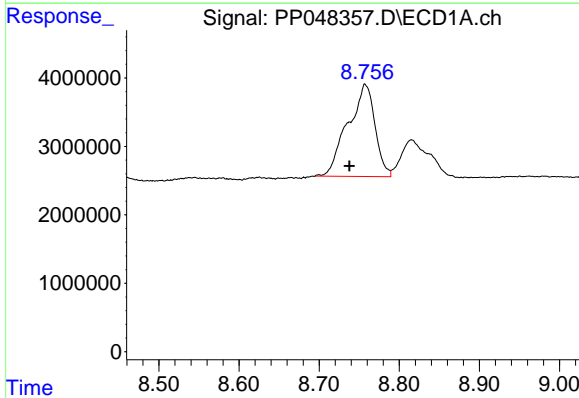
R.T.: 9.567 min  
Delta R.T.: -0.007 min  
Response: 12890360  
Conc: 162.86 ng/ml

Instrument :  
ECD\_P  
ClientSampleId :



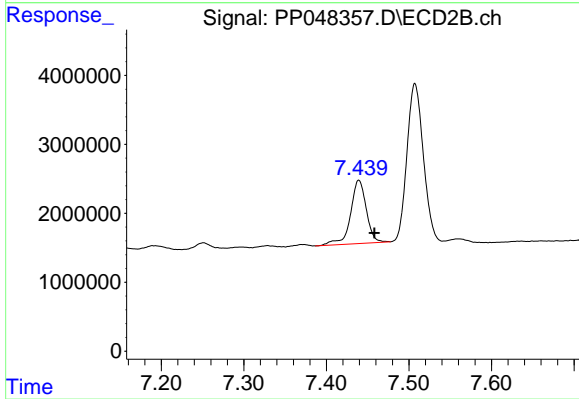
#40 AR-1262-5

R.T.: 8.051 min  
Delta R.T.: -0.020 min  
Response: 12965395  
Conc: 192.10 ng/ml



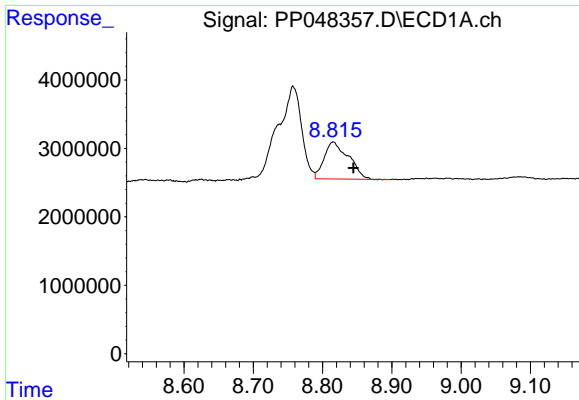
#41 AR-1268-1

R.T.: 8.758 min  
Delta R.T.: 0.020 min  
Response: 31666785  
Conc: 119.71 ng/ml



#41 AR-1268-1

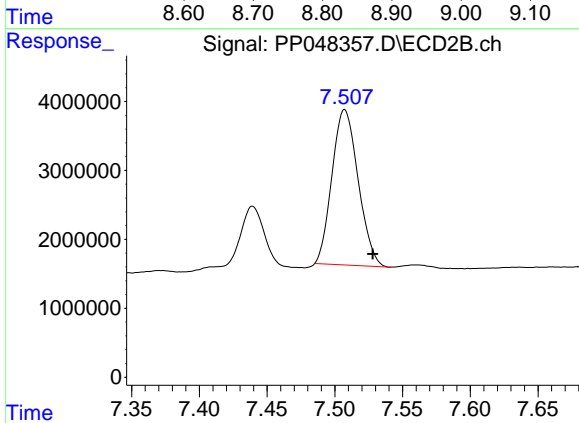
R.T.: 7.439 min  
Delta R.T.: -0.019 min  
Response: 12168439  
Conc: 52.10 ng/ml



#42 AR-1268-2

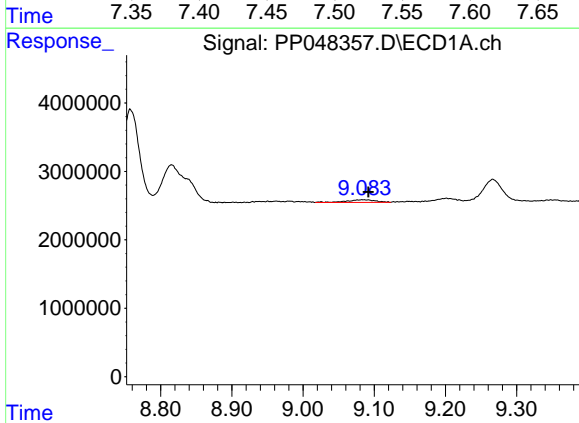
R.T.: 8.815 min  
 Delta R.T.: -0.029 min  
 Response: 13267295  
 Conc: 54.94 ng/ml

Instrument :  
 ECD\_P  
 ClientSampleId :



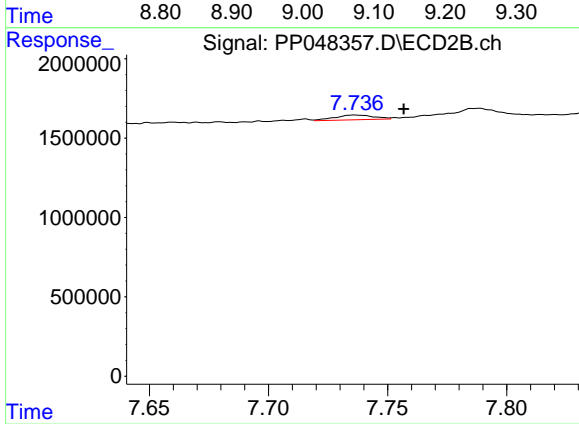
#42 AR-1268-2

R.T.: 7.507 min  
 Delta R.T.: -0.021 min  
 Response: 30346755  
 Conc: 140.26 ng/ml



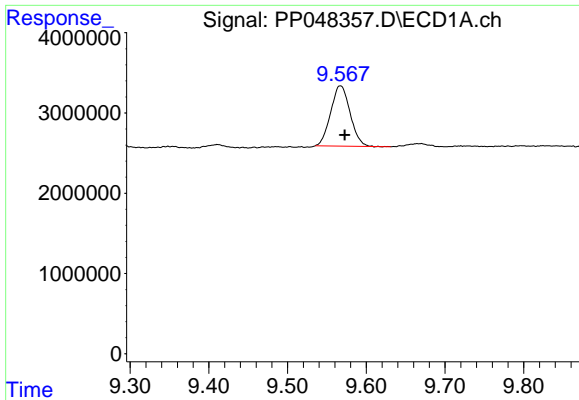
#43 AR-1268-3

R.T.: 9.084 min  
 Delta R.T.: -0.008 min  
 Response: 1058720  
 Conc: 5.15 ng/ml



#43 AR-1268-3

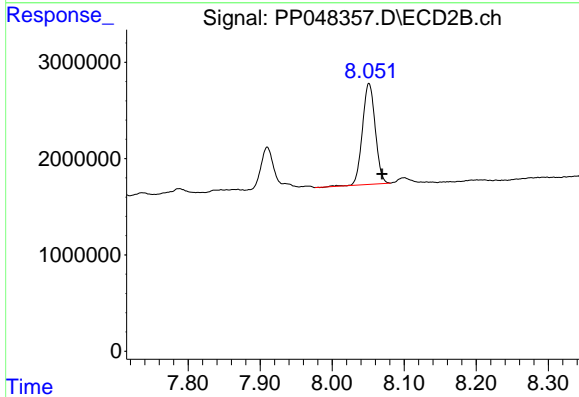
R.T.: 7.736 min  
 Delta R.T.: -0.021 min  
 Response: 343149  
 Conc: 1.85 ng/ml



#44 AR-1268-4

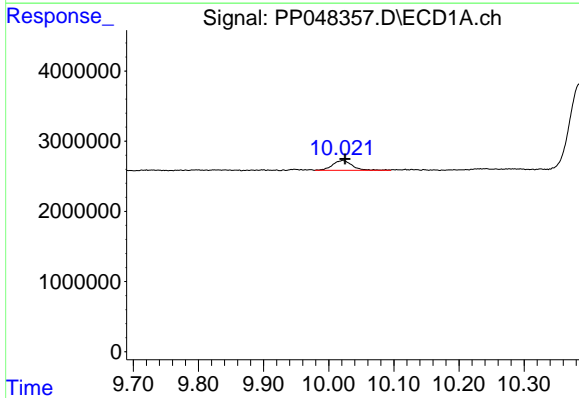
R.T.: 9.567 min  
Delta R.T.: -0.006 min  
Response: 12890360  
Conc: 143.50 ng/ml

Instrument :  
ECD\_P  
ClientSampleId :



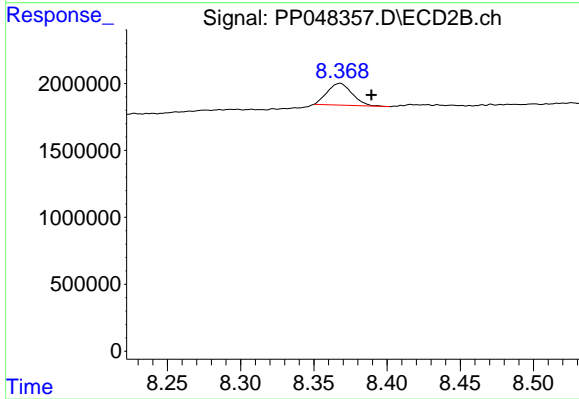
#44 AR-1268-4

R.T.: 8.051 min  
Delta R.T.: -0.018 min  
Response: 12965395  
Conc: 157.83 ng/ml



#45 AR-1268-5

R.T.: 10.021 min  
Delta R.T.: -0.003 min  
Response: 2949716  
Conc: 4.18 ng/ml



#45 AR-1268-5

R.T.: 8.368 min  
Delta R.T.: -0.021 min  
Response: 1918416  
Conc: 3.17 ng/ml