

Data Path : Z:\pestpcbsrv\HPCHEM1\ECD_P\Data\PP060222\
 Data File : PP048367.D
 Signal(s) : Signal #1: ECD1A.ch Signal #2: ECD2B.ch
 Acq On : 03 Jun 2022 03:43
 Operator : YP\AJ
 Sample : AR1660CCC500
 Misc :
 ALS Vial : 3 Sample Multiplier: 1

Instrument :
 ECD_P
 ClientSampleId :

Integration File signal 1: autoint1.e
 Integration File signal 2: autoint2.e
 Quant Time: Jun 03 06:22:15 2022
 Quant Method : Z:\pestpcbsrv\HPCHEM1\ECD_P\methods\PP052722.M
 Quant Title : GC EXTRACTABLES
 QLast Update : Fri May 27 23:53:39 2022
 Response via : Initial Calibration
 Integrator: ChemStation

Volume Inj. : 2 µl
 Signal #1 Phase : ZB-MR1 Signal #2 Phase: ZB-MR2
 Signal #1 Info : 30Mx0.32mmx 0.50µ Signal #2 Info : 30M x 0.32mm x 0.25µm

Compound	RT#1	RT#2	Resp#1	Resp#2	ng/ml	ng/ml
System Monitoring Compounds						
1) SA Tetrachlo...	4.034	3.214	116.2E6	94855469	49.640	48.131
2) SA Decachlor...	10.384	8.640	90737286	77558464	46.685	47.980
Target Compounds						
3) L1 AR-1016-1	5.322	4.393	42332745	46225922	501.998	687.299 #
4) L1 AR-1016-2	5.346	4.393	57443833	46225922	485.511	496.356
5) L1 AR-1016-3	5.413	4.580	36773490	24884530	544.181	485.766
6) L1 AR-1016-4	5.522	4.628	30242574	20007420	490.626	525.118
7) L1 AR-1016-5	5.845	4.855f	30421403	23320138	540.065	488.425
8) L2 AR-1221-1	4.266	3.445	4249117	3102820	160.730	149.697
9) L2 AR-1221-2	4.365	3.535	6769606	4628518	330.531	301.343
10) L2 AR-1221-3	4.447	3.617	22027170	17621247	351.829	355.305
11) L3 AR-1232-1	4.447	3.617	22027170	17621247	424.082	407.983
12) L3 AR-1232-2	5.025	4.393	31548385	46225922	1314.083	1147.314
13) L3 AR-1232-3	5.346	4.580	57443833	24884530	1157.625	1206.178
14) L3 AR-1232-4	5.522	4.672	30242574	24488837	1265.120	1411.110
15) L3 AR-1232-5	5.622	4.855	27301649	23320138	1671.121	1190.549 #
16) L4 AR-1242-1	5.322	4.393	42332745	46225922	757.002	969.361 #
17) L4 AR-1242-2	5.346	4.393	57443833	46225922	698.453	695.692
18) L4 AR-1242-3	5.413	4.580	36773490	24884530	749.113	717.391
19) L4 AR-1242-4	5.522	4.672	30242574	24488837	764.230	762.447
20) L4 AR-1242-5	6.337	5.235f	6204513	20312313	145.683	486.381 #
21) L5 AR-1248-1	5.322	4.393	42332745	46225922	981.413	1263.000 #
22) L5 AR-1248-2	5.622	4.628	27301649	20007420	477.395	420.117
23) L5 AR-1248-3	5.845	4.672	30421403	24488837	449.458	494.318
24) L5 AR-1248-4	6.295	4.855	6056311	23320138	77.876	400.283 #
25) L5 AR-1248-5	6.337	5.278f	6204513	4577739	81.567	75.895
26) L6 AR-1254-1	6.262	5.235f	22623876	20312313	311.641	231.705 #
27) L6 AR-1254-2	6.504	5.396f	22977920	19962930	193.112	265.691 #
28) L6 AR-1254-3	6.912	5.850	13225877	34051156	111.335	277.526 #
29) L6 AR-1254-4	7.229	6.081f	10703745	4340984	118.668	57.812 #
30) L6 AR-1254-5	7.695	6.536f	75560268	63662072	815.416	628.844
31) L7 AR-1260-1	7.091	5.974	50992494	46500955	546.331	543.213
32) L7 AR-1260-2	7.378	6.180	58711328	56384367	525.213	547.009
33) L7 AR-1260-3	7.776	6.346	42442948	52304029	495.500	528.203
34) L7 AR-1260-4	8.028	6.862	50962823	40615033	491.175	487.865
35) L7 AR-1260-5	8.390	7.127	91926974	95076574	445.475	479.187
36) L8 AR-1262-1	7.776	6.580f	42442948	43941977	372.145	406.710
37) L8 AR-1262-2	8.390	6.862f	91926974	40615033	431.280	410.401
38) L8 AR-1262-3	8.758f	7.438f	58881635	20760788	631.820	275.874 #
39) L8 AR-1262-4	8.815f	7.507f	34368186	63368448	578.020	435.084
40) L8 AR-1262-5	9.566	8.050f	21457316	22201331	271.105	328.943
41) L9 AR-1268-1	8.758f	7.438f	58881635	20760788	222.586	88.893 #

Data Path : Z:\pestpcbsrv\HPCHEM1\ECD_P\Data\PP060222\
 Data File : PP048367.D
 Signal(s) : Signal #1: ECD1A.ch Signal #2: ECD2B.ch
 Acq On : 03 Jun 2022 03:43
 Operator : YP\AJ
 Sample : AR1660CCC500
 Misc :
 ALS Vial : 3 Sample Multiplier: 1

Instrument :
 ECD_P
 ClientSampleId :

Integration File signal 1: autoint1.e
 Integration File signal 2: autoint2.e
 Quant Time: Jun 03 06:22:15 2022
 Quant Method : Z:\pestpcbsrv\HPCHEM1\ECD_P\methods\PP052722.M
 Quant Title : GC EXTRACTABLES
 QLast Update : Fri May 27 23:53:39 2022
 Response via : Initial Calibration
 Integrator: ChemStation

Volume Inj. : 2 µl
 Signal #1 Phase : ZB-MR1 Signal #2 Phase: ZB-MR2
 Signal #1 Info : 30Mx0.32mmx 0.50µ Signal #2 Info : 30M x 0.32mm x 0.25µm

	Compound	RT#1	RT#2	Resp#1	Resp#2	ng/ml	ng/ml
42)	L9 AR-1268-2	0.000	7.507f	0	63368448	N.D.	292.878 #
43)	L9 AR-1268-3	9.086	7.736f	1784907	1505246	8.682	8.098
44)	L9 AR-1268-4	9.566	8.050f	21457316	22201331	238.867	270.253
45)	L9 AR-1268-5	10.017	8.366f	7748768	5017284	10.975	8.280

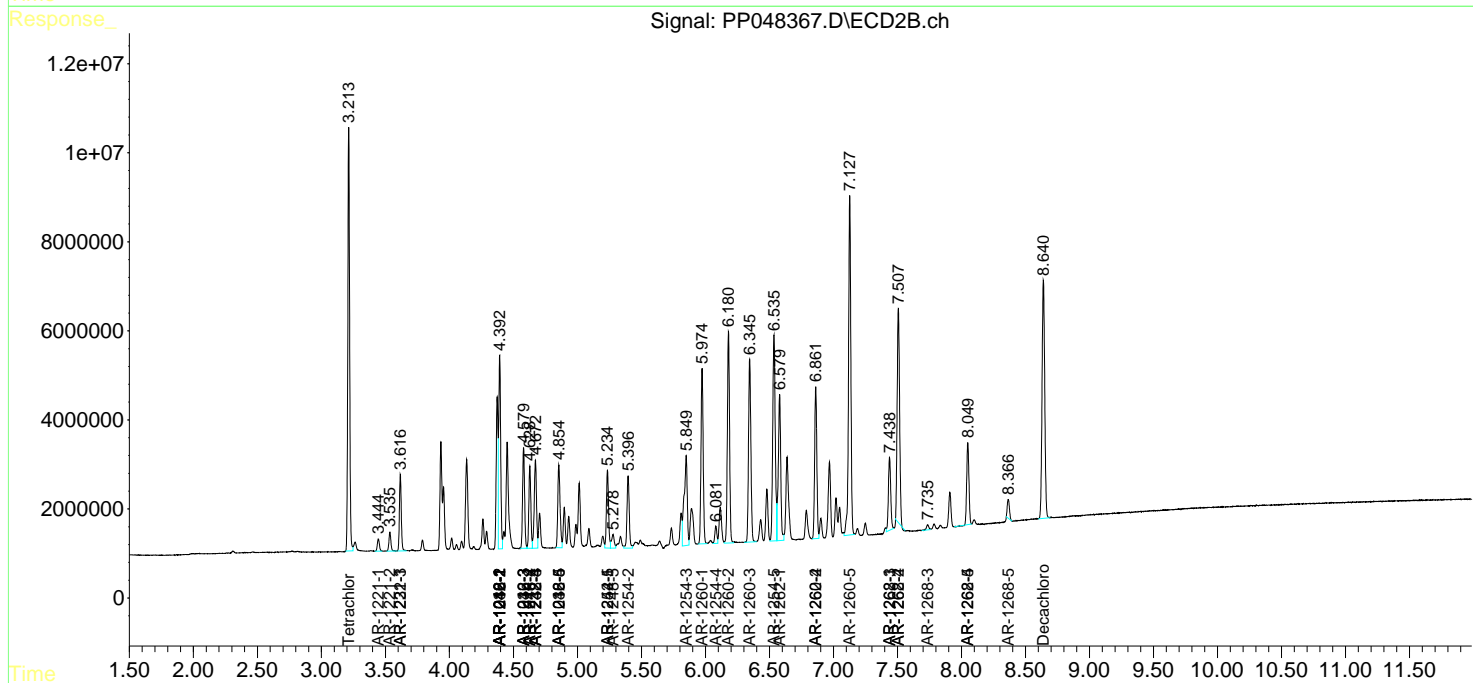
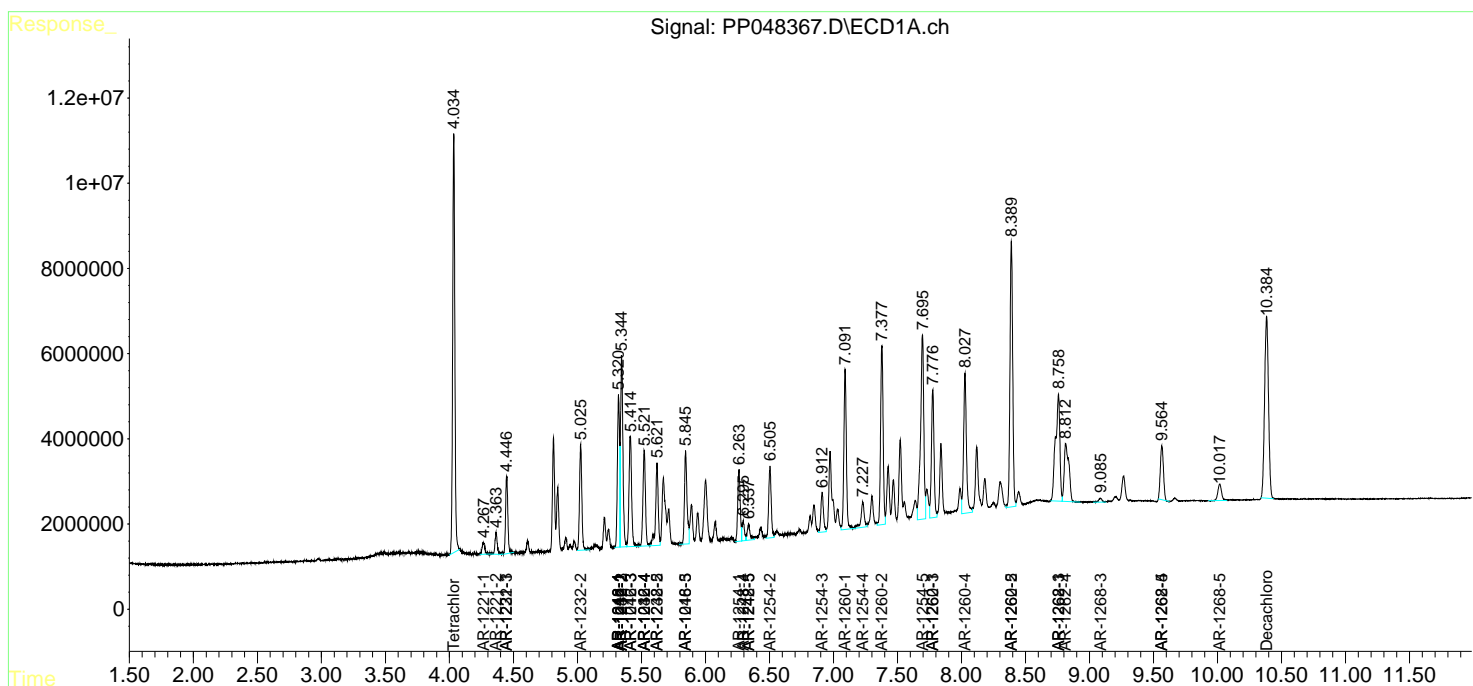
(f)=RT Delta > 1/2 Window (#)=Amounts differ by > 25% (m)=manual int.

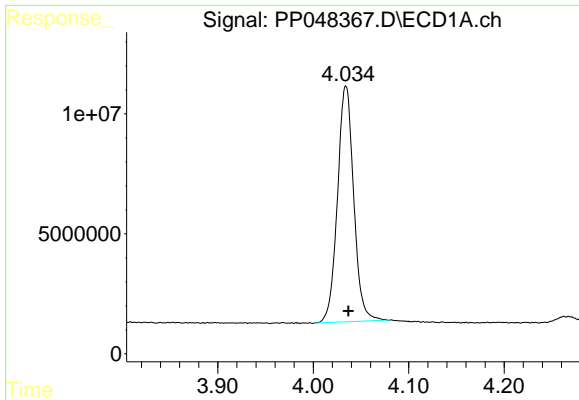
Data Path : Z:\pestpcbsrv\HPCHEM1\ECD_P\Data\PP060222\
 Data File : PP048367.D
 Signal(s) : Signal #1: ECD1A.ch Signal #2: ECD2B.ch
 Acq On : 03 Jun 2022 03:43
 Operator : YP\AJ
 Sample : AR1660CCC500
 Misc :
 ALS Vial : 3 Sample Multiplier: 1

Instrument :
 ECD_P
 ClientSampleId :

Integration File signal 1: autoint1.e
 Integration File signal 2: autoint2.e
 Quant Time: Jun 03 06:22:15 2022
 Quant Method : Z:\pestpcbsrv\HPCHEM1\ECD_P\methods\PP052722.M
 Quant Title : GC EXTRACTABLES
 QLast Update : Fri May 27 23:53:39 2022
 Response via : Initial Calibration
 Integrator: ChemStation

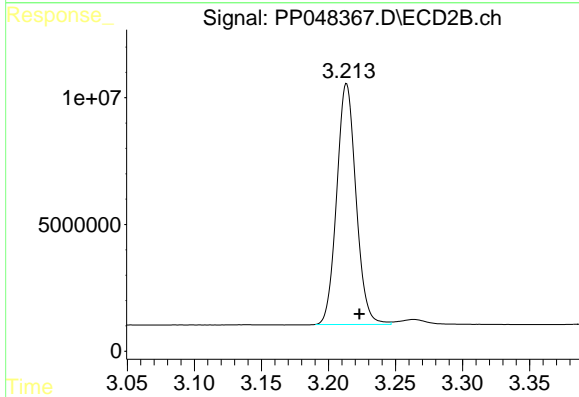
Volume Inj. : 2 µl
 Signal #1 Phase : ZB-MR1 Signal #2 Phase: ZB-MR2
 Signal #1 Info : 30Mx0.32mmx 0.50µ Signal #2 Info : 30M x 0.32mm x 0.25µm



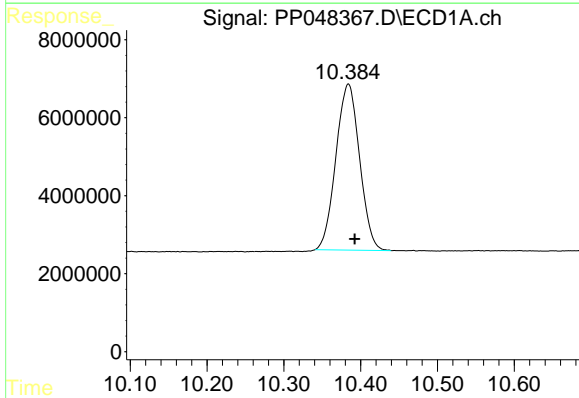


#1 Tetrachloro-m-xylene
 R.T.: 4.034 min
 Delta R.T.: -0.003 min
 Response: 116244945
 Conc: 49.64 ng/ml

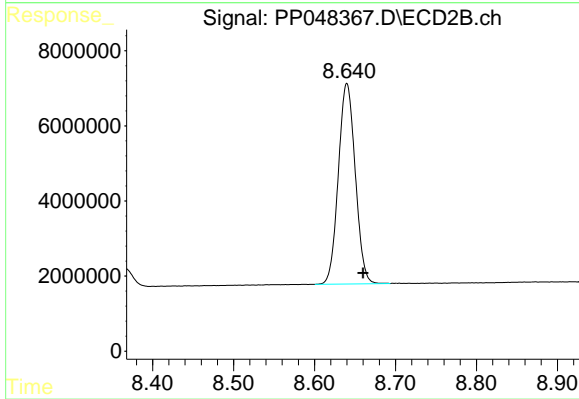
Instrument :
 ECD_P
 ClientSampleId :



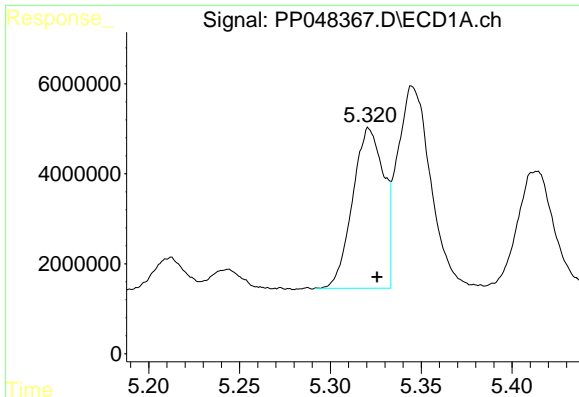
#1 Tetrachloro-m-xylene
 R.T.: 3.214 min
 Delta R.T.: -0.010 min
 Response: 94855469
 Conc: 48.13 ng/ml



#2 Decachlorobiphenyl
 R.T.: 10.384 min
 Delta R.T.: -0.009 min
 Response: 90737286
 Conc: 46.68 ng/ml



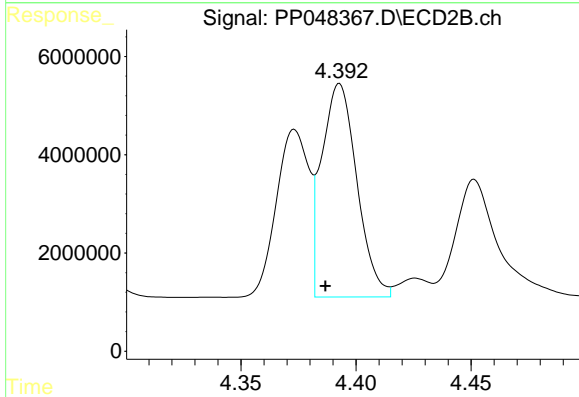
#2 Decachlorobiphenyl
 R.T.: 8.640 min
 Delta R.T.: -0.020 min
 Response: 77558464
 Conc: 47.98 ng/ml



#3 AR-1016-1

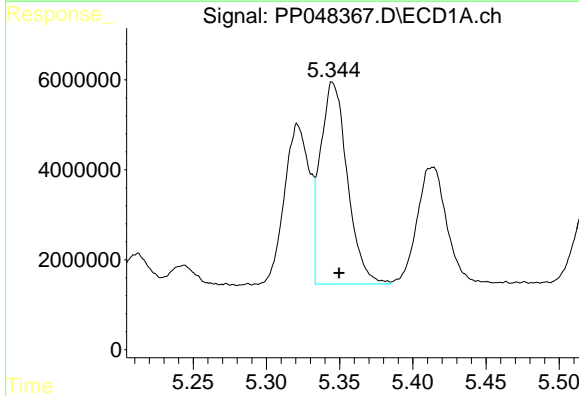
R.T.: 5.322 min
 Delta R.T.: -0.004 min
 Response: 42332745
 Conc: 502.00 ng/ml

Instrument :
 ECD_P
 ClientSampleId :



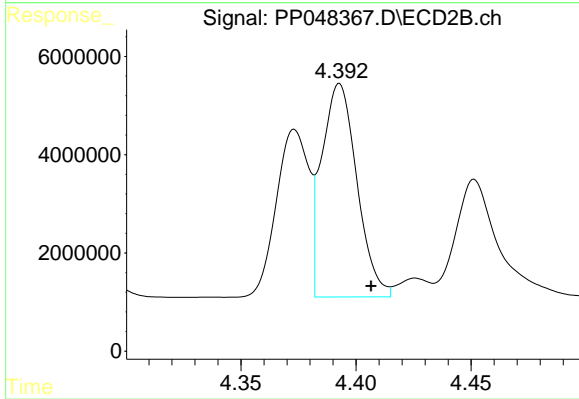
#3 AR-1016-1

R.T.: 4.393 min
 Delta R.T.: 0.006 min
 Response: 46225922
 Conc: 687.30 ng/ml



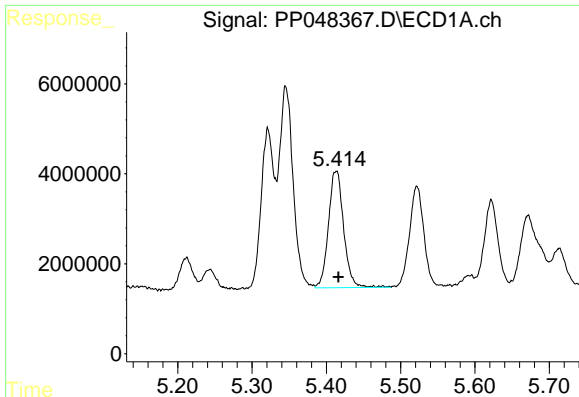
#4 AR-1016-2

R.T.: 5.346 min
 Delta R.T.: -0.004 min
 Response: 57443833
 Conc: 485.51 ng/ml



#4 AR-1016-2

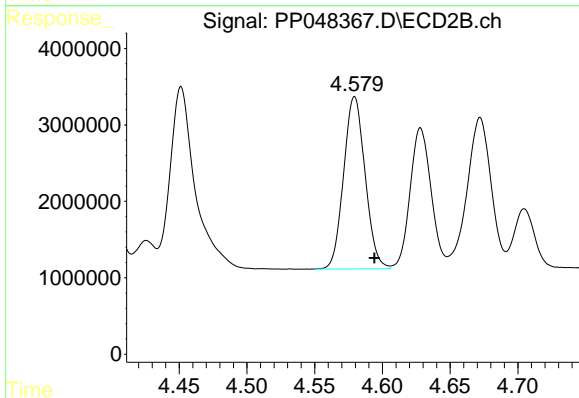
R.T.: 4.393 min
 Delta R.T.: -0.014 min
 Response: 46225922
 Conc: 496.36 ng/ml



#5 AR-1016-3

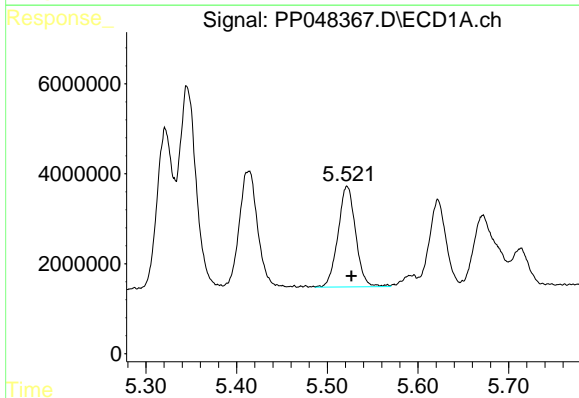
R.T.: 5.413 min
 Delta R.T.: -0.003 min
 Response: 36773490
 Conc: 544.18 ng/ml

Instrument :
 ECD_P
 ClientSampleId :



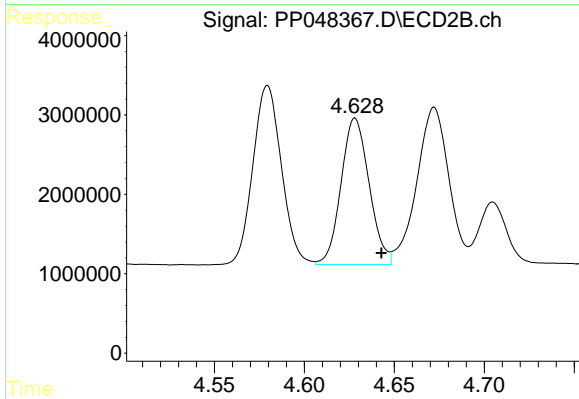
#5 AR-1016-3

R.T.: 4.580 min
 Delta R.T.: -0.014 min
 Response: 24884530
 Conc: 485.77 ng/ml



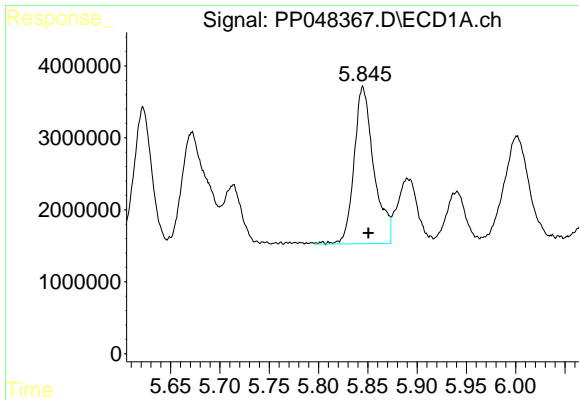
#6 AR-1016-4

R.T.: 5.522 min
 Delta R.T.: -0.005 min
 Response: 30242574
 Conc: 490.63 ng/ml



#6 AR-1016-4

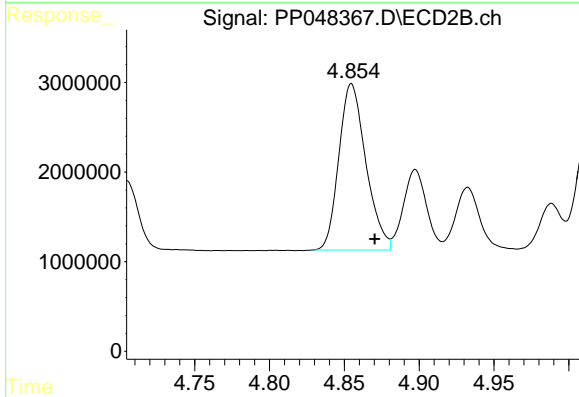
R.T.: 4.628 min
 Delta R.T.: -0.015 min
 Response: 20007420
 Conc: 525.12 ng/ml



#7 AR-1016-5

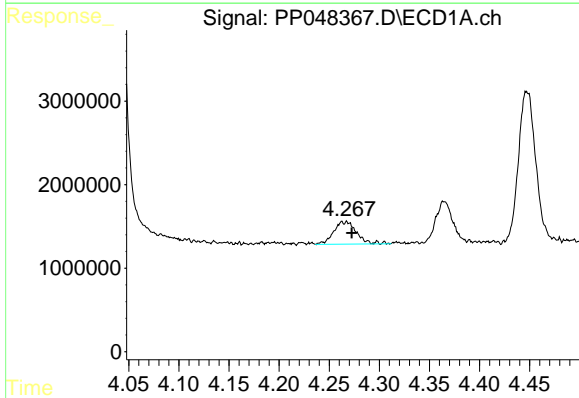
R.T.: 5.845 min
 Delta R.T.: -0.005 min
 Response: 30421403
 Conc: 540.07 ng/ml

Instrument :
 ECD_P
 ClientSampleId :



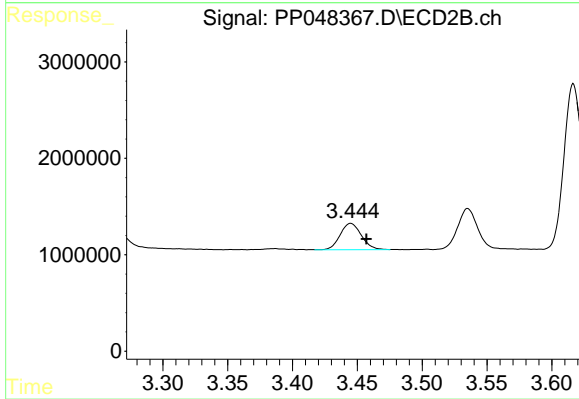
#7 AR-1016-5

R.T.: 4.855 min
 Delta R.T.: -0.015 min
 Response: 23320138
 Conc: 488.43 ng/ml



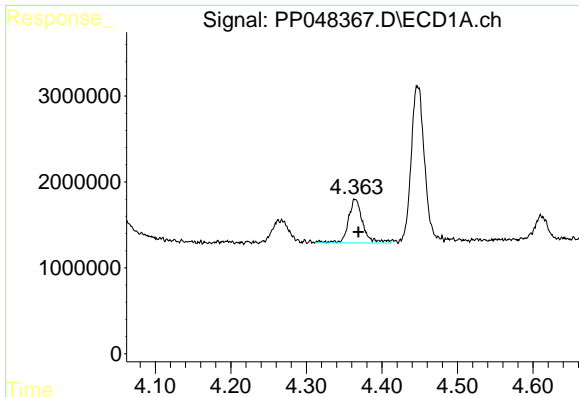
#8 AR-1221-1

R.T.: 4.266 min
 Delta R.T.: -0.006 min
 Response: 4249117
 Conc: 160.73 ng/ml



#8 AR-1221-1

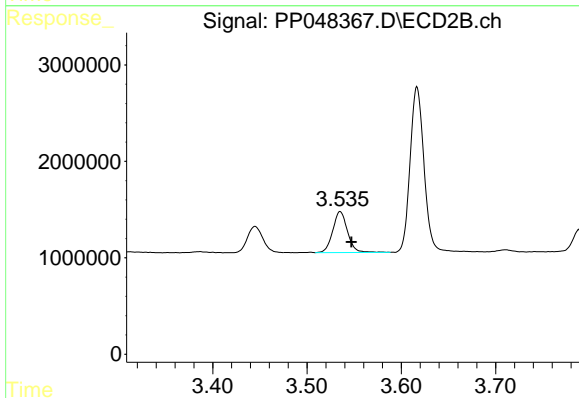
R.T.: 3.445 min
 Delta R.T.: -0.012 min
 Response: 3102820
 Conc: 149.70 ng/ml



#9 AR-1221-2

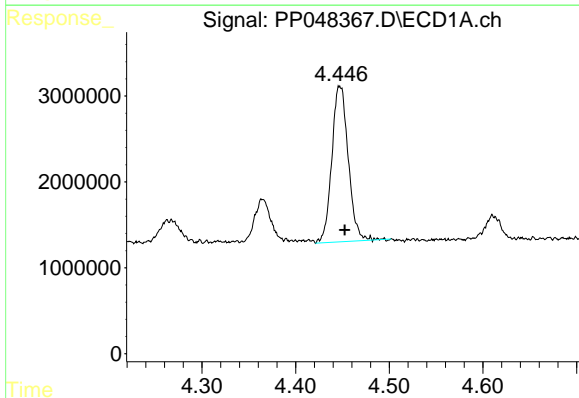
R.T.: 4.365 min
 Delta R.T.: -0.004 min
 Response: 6769606
 Conc: 330.53 ng/ml

Instrument :
 ECD_P
 ClientSampleId :



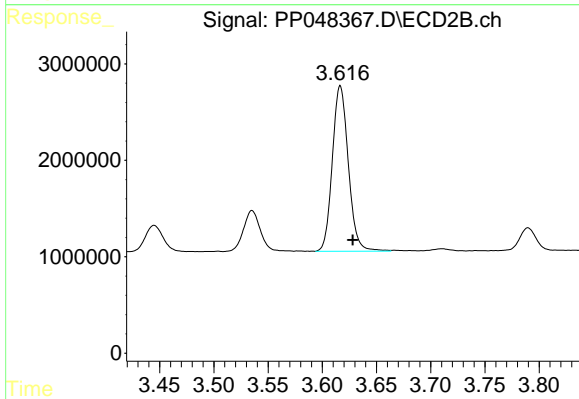
#9 AR-1221-2

R.T.: 3.535 min
 Delta R.T.: -0.012 min
 Response: 4628518
 Conc: 301.34 ng/ml



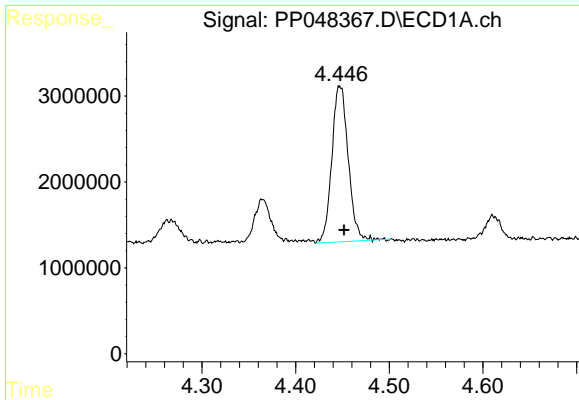
#10 AR-1221-3

R.T.: 4.447 min
 Delta R.T.: -0.005 min
 Response: 22027170
 Conc: 351.83 ng/ml



#10 AR-1221-3

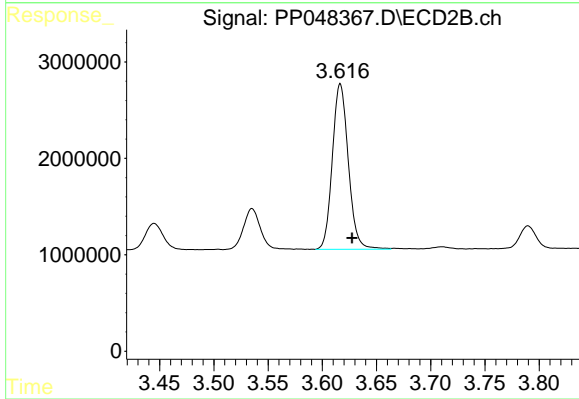
R.T.: 3.617 min
 Delta R.T.: -0.012 min
 Response: 17621247
 Conc: 355.31 ng/ml



#11 AR-1232-1

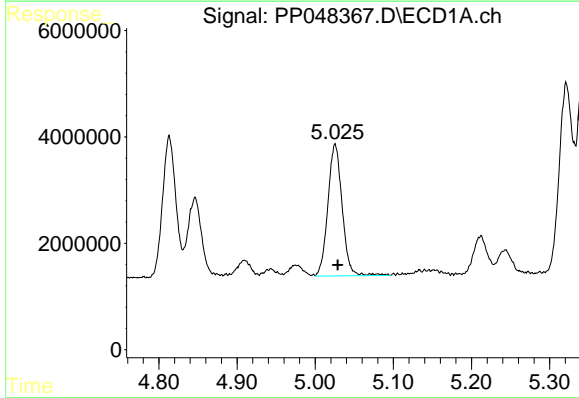
R.T.: 4.447 min
 Delta R.T.: -0.004 min
 Response: 22027170
 Conc: 424.08 ng/ml

Instrument :
 ECD_P
 ClientSampleId :



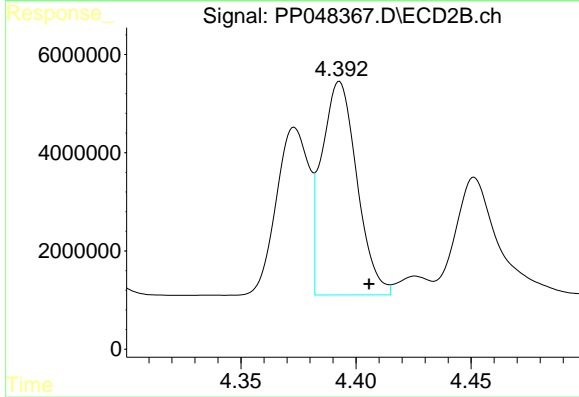
#11 AR-1232-1

R.T.: 3.617 min
 Delta R.T.: -0.011 min
 Response: 17621247
 Conc: 407.98 ng/ml



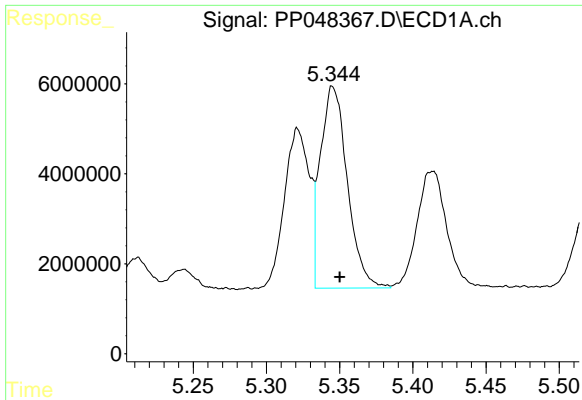
#12 AR-1232-2

R.T.: 5.025 min
 Delta R.T.: -0.003 min
 Response: 31548385
 Conc: 1314.08 ng/ml



#12 AR-1232-2

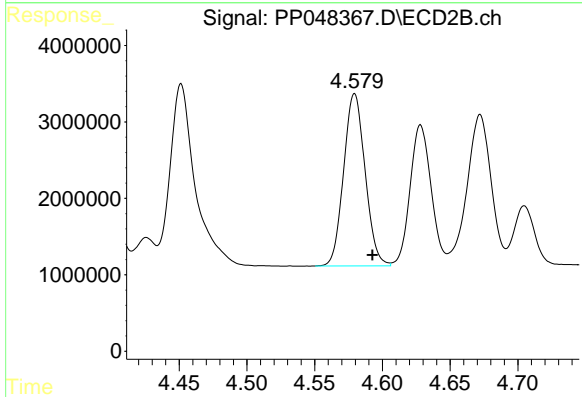
R.T.: 4.393 min
 Delta R.T.: -0.013 min
 Response: 46225922
 Conc: 1147.31 ng/ml



#13 AR-1232-3

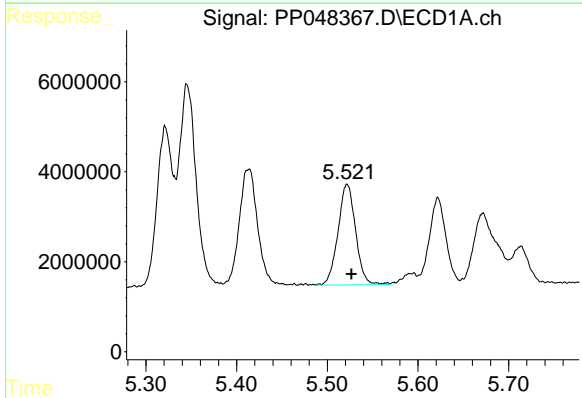
R.T.: 5.346 min
 Delta R.T.: -0.004 min
 Response: 57443833
 Conc: 1157.62 ng/m

Instrument :
 ECD_P
 ClientSampleId :



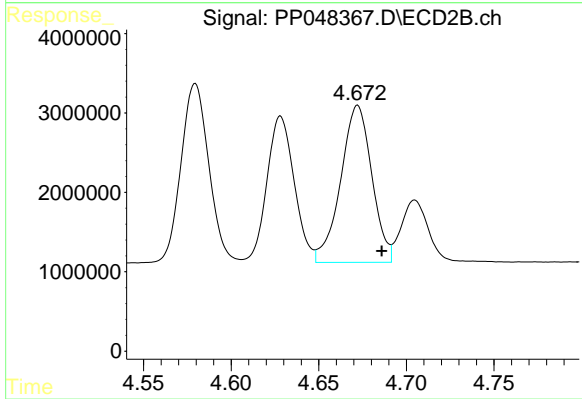
#13 AR-1232-3

R.T.: 4.580 min
 Delta R.T.: -0.013 min
 Response: 24884530
 Conc: 1206.18 ng/ml



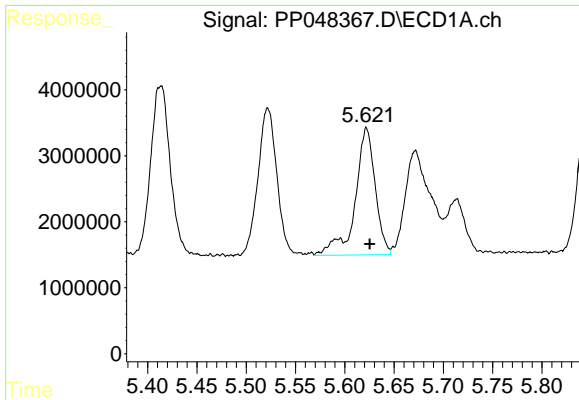
#14 AR-1232-4

R.T.: 5.522 min
 Delta R.T.: -0.005 min
 Response: 30242574
 Conc: 1265.12 ng/ml



#14 AR-1232-4

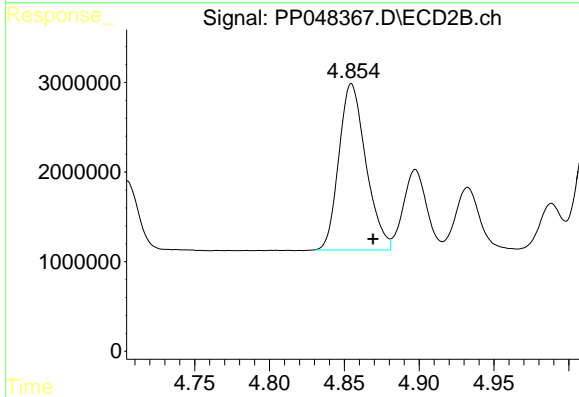
R.T.: 4.672 min
 Delta R.T.: -0.014 min
 Response: 24488837
 Conc: 1411.11 ng/ml



#15 AR-1232-5

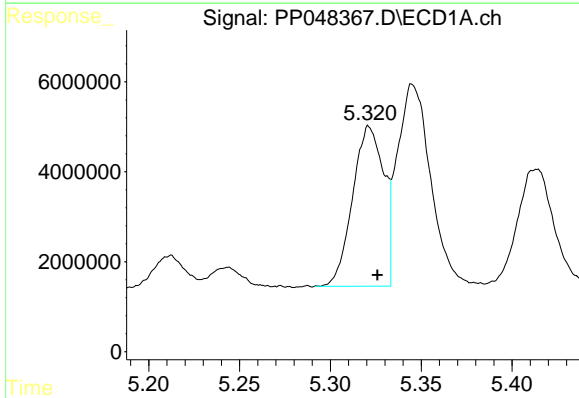
R.T.: 5.622 min
 Delta R.T.: -0.003 min
 Response: 27301649
 Conc: 1671.12 ng/ml

Instrument :
 ECD_P
 ClientSampleId :



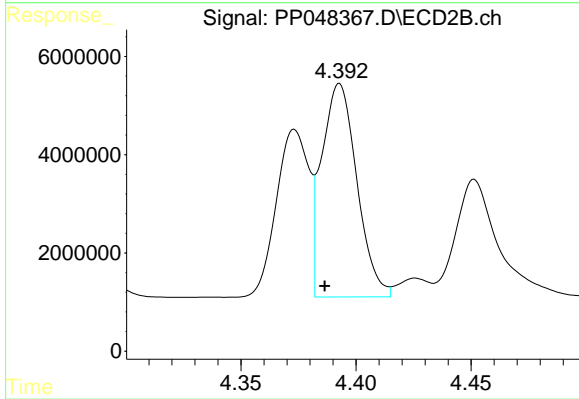
#15 AR-1232-5

R.T.: 4.855 min
 Delta R.T.: -0.014 min
 Response: 23320138
 Conc: 1190.55 ng/ml



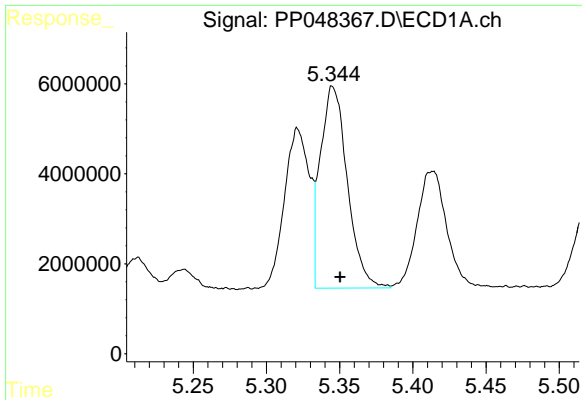
#16 AR-1242-1

R.T.: 5.322 min
 Delta R.T.: -0.004 min
 Response: 42332745
 Conc: 757.00 ng/ml



#16 AR-1242-1

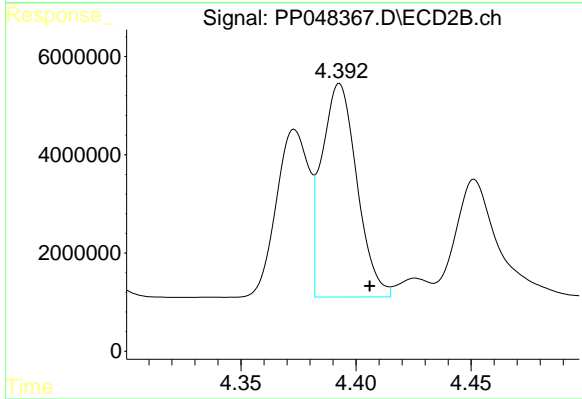
R.T.: 4.393 min
 Delta R.T.: 0.006 min
 Response: 46225922
 Conc: 969.36 ng/ml



#17 AR-1242-2

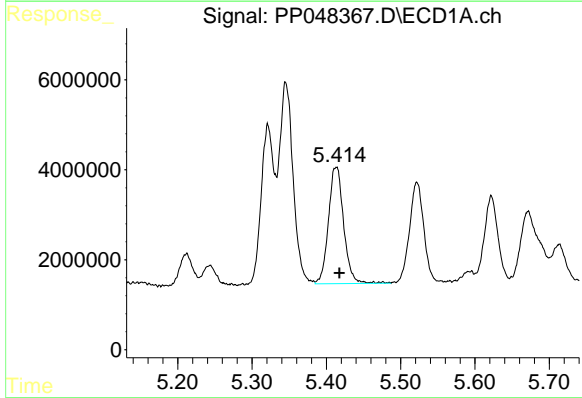
R.T.: 5.346 min
 Delta R.T.: -0.005 min
 Response: 57443833
 Conc: 698.45 ng/ml

Instrument :
 ECD_P
 ClientSampleId :



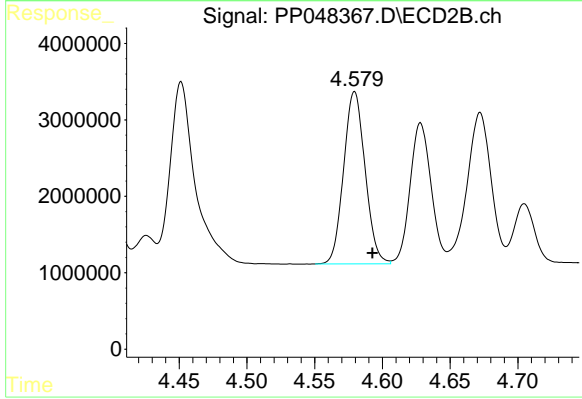
#17 AR-1242-2

R.T.: 4.393 min
 Delta R.T.: -0.013 min
 Response: 46225922
 Conc: 695.69 ng/ml



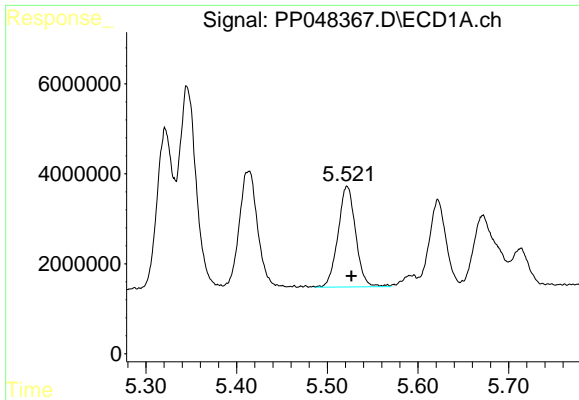
#18 AR-1242-3

R.T.: 5.413 min
 Delta R.T.: -0.004 min
 Response: 36773490
 Conc: 749.11 ng/ml



#18 AR-1242-3

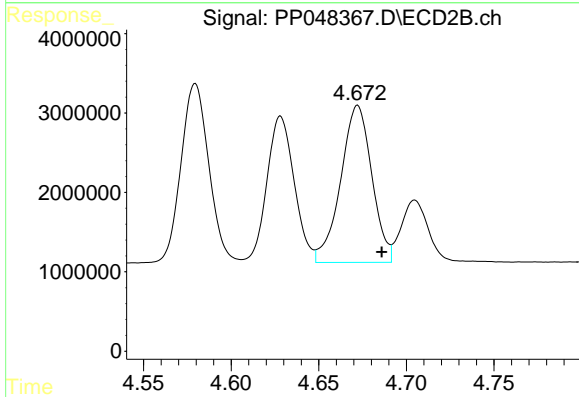
R.T.: 4.580 min
 Delta R.T.: -0.013 min
 Response: 24884530
 Conc: 717.39 ng/ml



#19 AR-1242-4

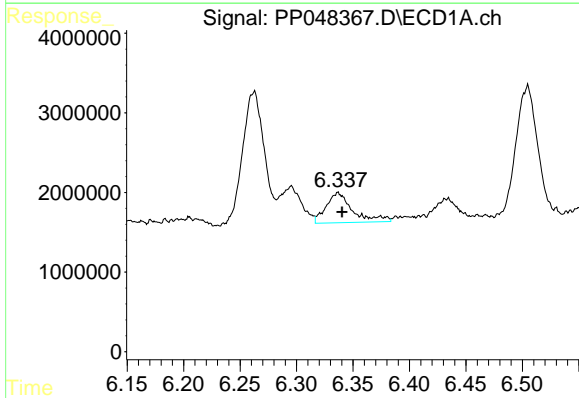
R.T.: 5.522 min
 Delta R.T.: -0.005 min
 Response: 30242574
 Conc: 764.23 ng/ml

Instrument :
 ECD_P
 ClientSampleId :



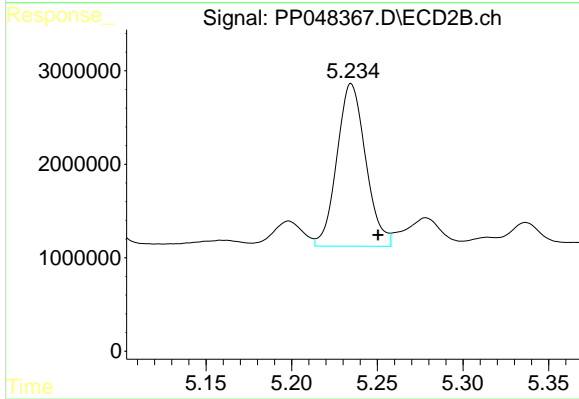
#19 AR-1242-4

R.T.: 4.672 min
 Delta R.T.: -0.014 min
 Response: 24488837
 Conc: 762.45 ng/ml



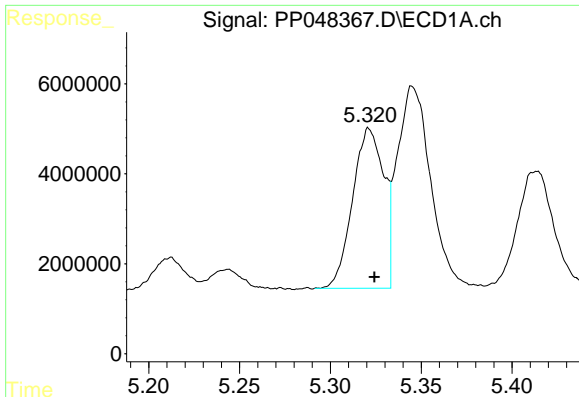
#20 AR-1242-5

R.T.: 6.337 min
 Delta R.T.: -0.004 min
 Response: 6204513
 Conc: 145.68 ng/ml



#20 AR-1242-5

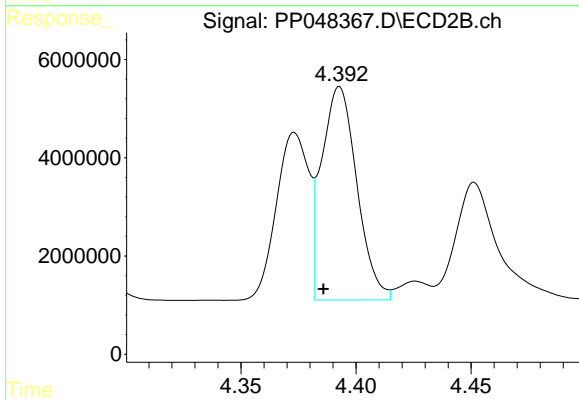
R.T.: 5.235 min
 Delta R.T.: -0.016 min
 Response: 20312313
 Conc: 486.38 ng/ml



#21 AR-1248-1

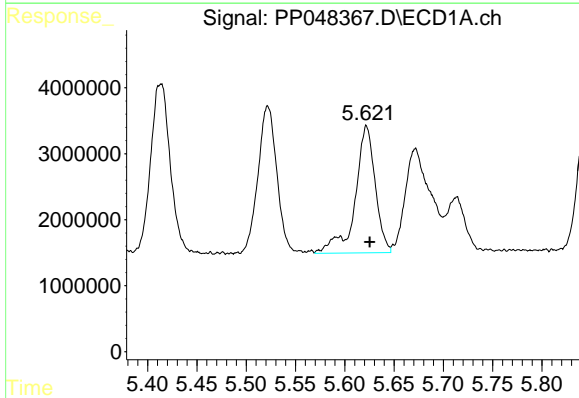
R.T.: 5.322 min
 Delta R.T.: -0.003 min
 Response: 42332745
 Conc: 981.41 ng/ml

Instrument :
 ECD_P
 ClientSampleId :



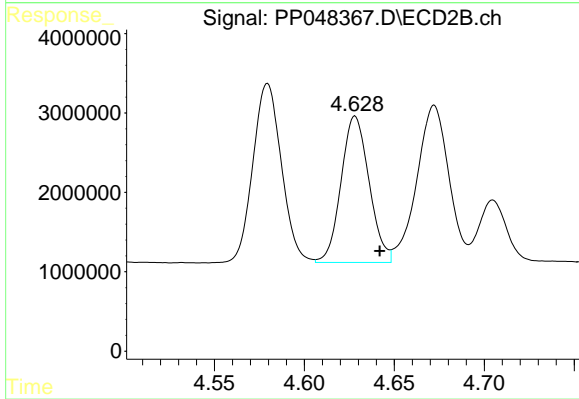
#21 AR-1248-1

R.T.: 4.393 min
 Delta R.T.: 0.007 min
 Response: 46225922
 Conc: 1263.00 ng/ml



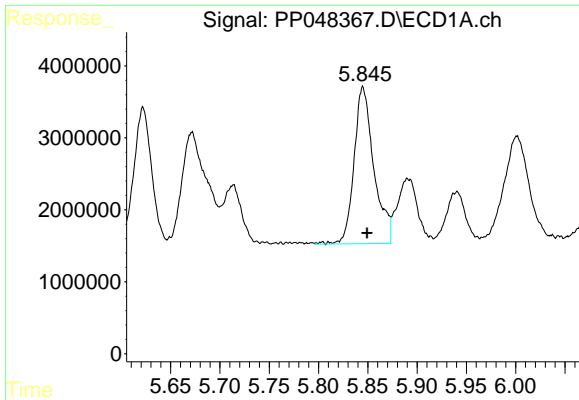
#22 AR-1248-2

R.T.: 5.622 min
 Delta R.T.: -0.003 min
 Response: 27301649
 Conc: 477.40 ng/ml



#22 AR-1248-2

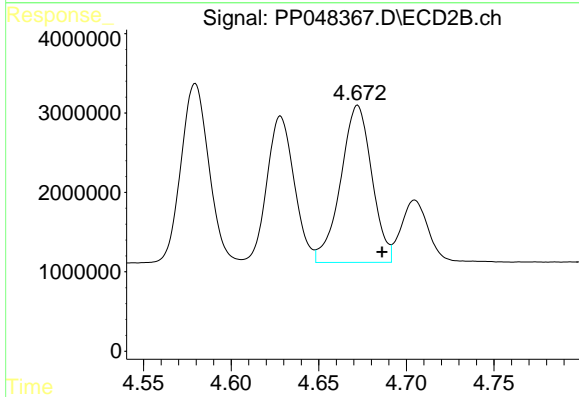
R.T.: 4.628 min
 Delta R.T.: -0.014 min
 Response: 20007420
 Conc: 420.12 ng/ml



#23 AR-1248-3

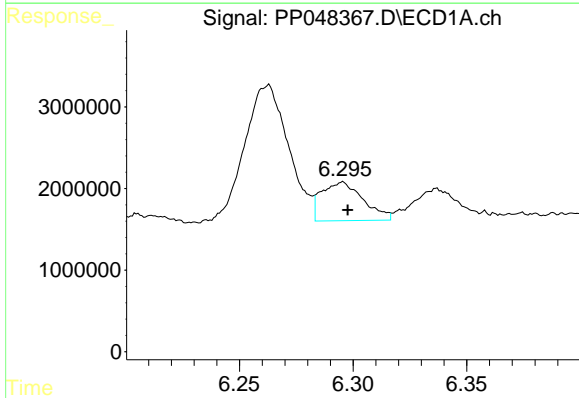
R.T.: 5.845 min
 Delta R.T.: -0.004 min
 Response: 30421403
 Conc: 449.46 ng/ml

Instrument :
 ECD_P
 ClientSampleId :



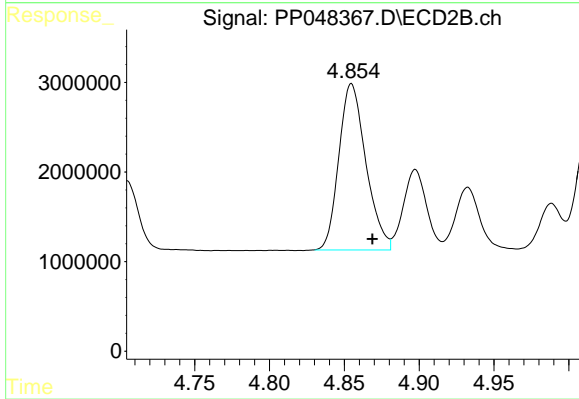
#23 AR-1248-3

R.T.: 4.672 min
 Delta R.T.: -0.014 min
 Response: 24488837
 Conc: 494.32 ng/ml



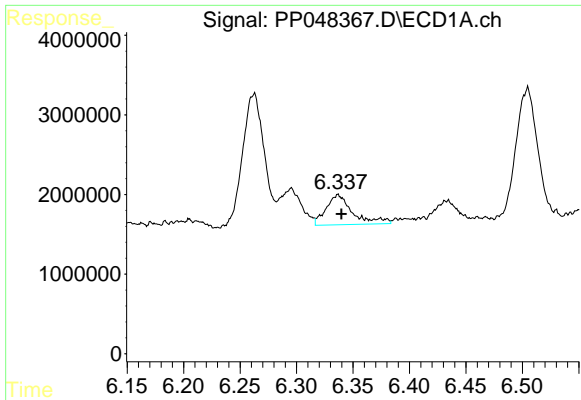
#24 AR-1248-4

R.T.: 6.295 min
 Delta R.T.: -0.003 min
 Response: 6056311
 Conc: 77.88 ng/ml



#24 AR-1248-4

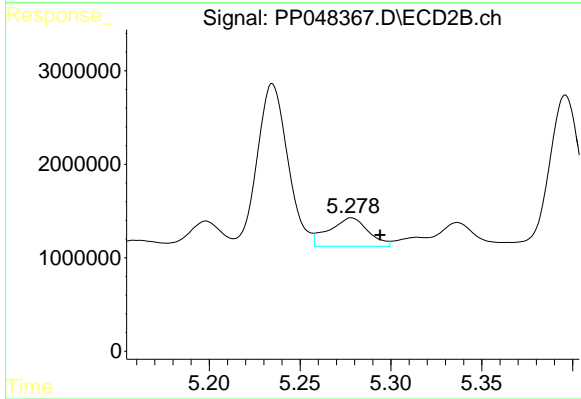
R.T.: 4.855 min
 Delta R.T.: -0.014 min
 Response: 23320138
 Conc: 400.28 ng/ml



#25 AR-1248-5

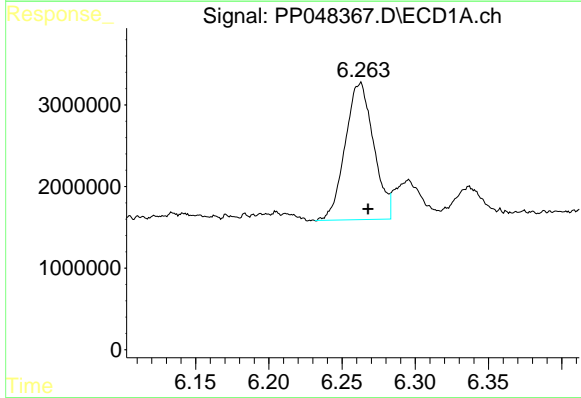
R.T.: 6.337 min
 Delta R.T.: -0.003 min
 Response: 6204513
 Conc: 81.57 ng/ml

Instrument :
 ECD_P
 ClientSampleId :



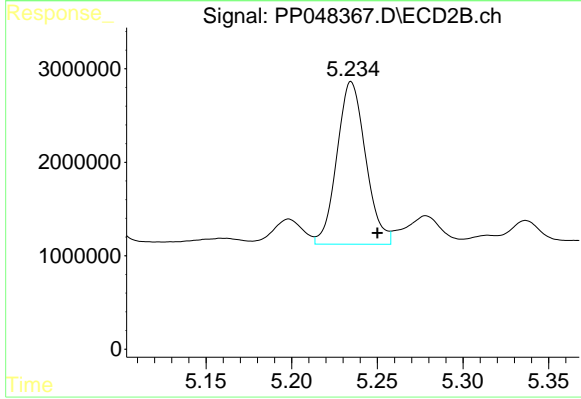
#25 AR-1248-5

R.T.: 5.278 min
 Delta R.T.: -0.016 min
 Response: 4577739
 Conc: 75.90 ng/ml



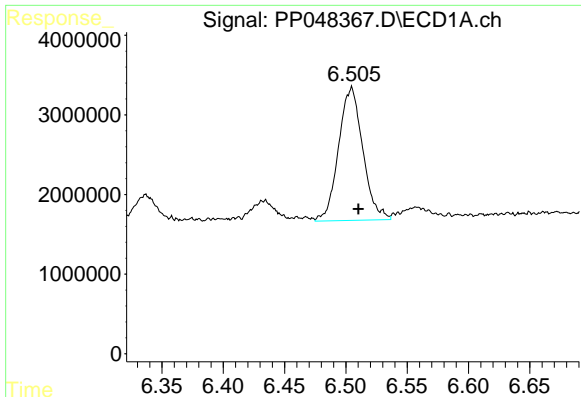
#26 AR-1254-1

R.T.: 6.262 min
 Delta R.T.: -0.006 min
 Response: 22623876
 Conc: 311.64 ng/ml



#26 AR-1254-1

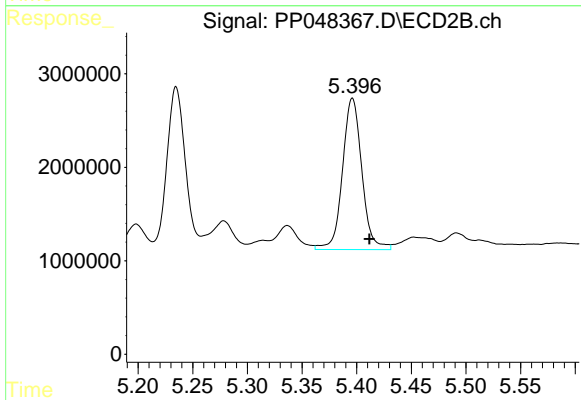
R.T.: 5.235 min
 Delta R.T.: -0.015 min
 Response: 20312313
 Conc: 231.71 ng/ml



#27 AR-1254-2

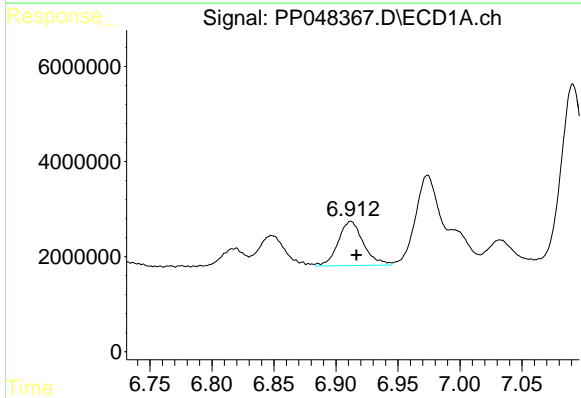
R.T.: 6.504 min
 Delta R.T.: -0.006 min
 Response: 22977920
 Conc: 193.11 ng/ml

Instrument :
 ECD_P
 ClientSampleId :



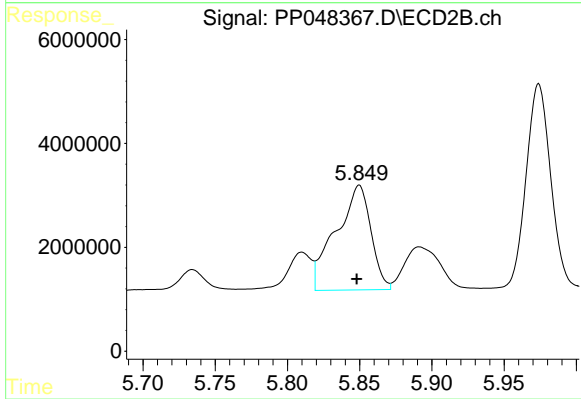
#27 AR-1254-2

R.T.: 5.396 min
 Delta R.T.: -0.016 min
 Response: 19962930
 Conc: 265.69 ng/ml



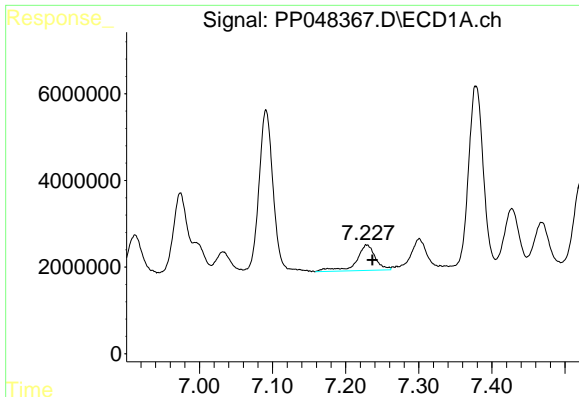
#28 AR-1254-3

R.T.: 6.912 min
 Delta R.T.: -0.005 min
 Response: 13225877
 Conc: 111.33 ng/ml



#28 AR-1254-3

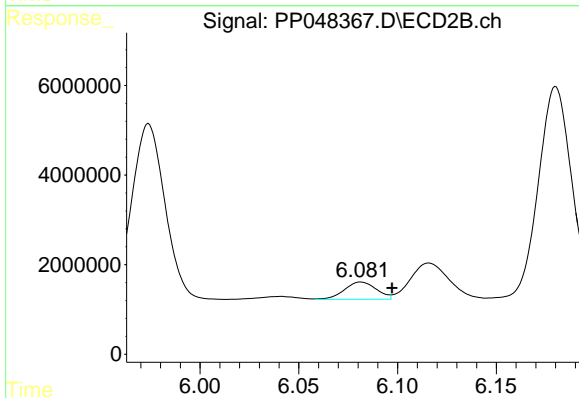
R.T.: 5.850 min
 Delta R.T.: 0.002 min
 Response: 34051156
 Conc: 277.53 ng/ml



#29 AR-1254-4

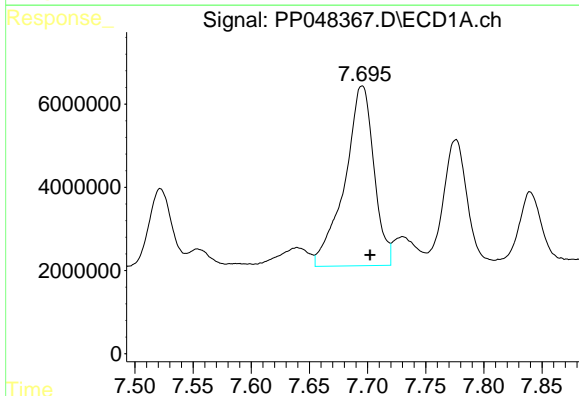
R.T.: 7.229 min
 Delta R.T.: -0.008 min
 Response: 10703745
 Conc: 118.67 ng/ml

Instrument :
 ECD_P
 ClientSampleId :



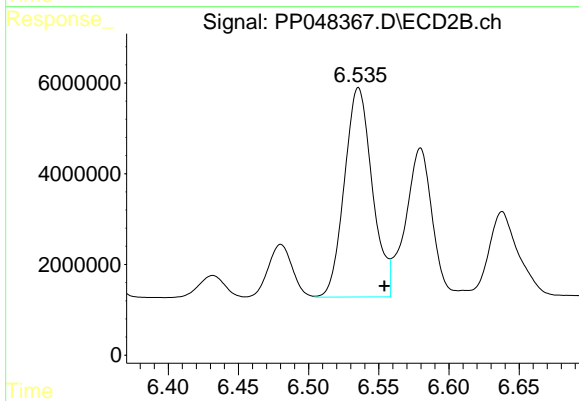
#29 AR-1254-4

R.T.: 6.081 min
 Delta R.T.: -0.016 min
 Response: 4340984
 Conc: 57.81 ng/ml



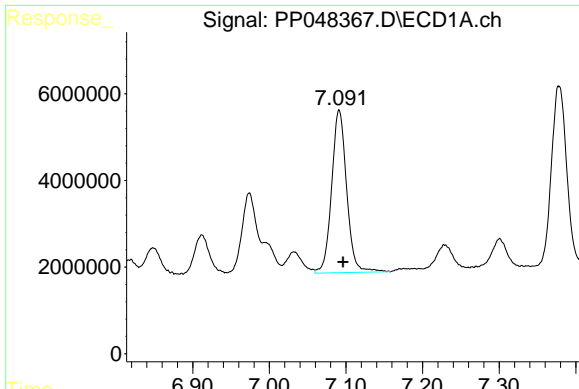
#30 AR-1254-5

R.T.: 7.695 min
 Delta R.T.: -0.007 min
 Response: 75560268
 Conc: 815.42 ng/ml



#30 AR-1254-5

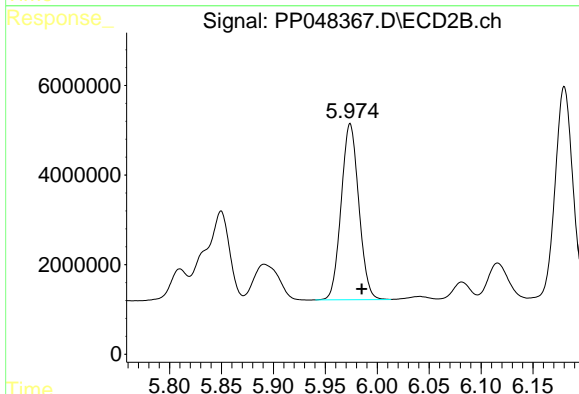
R.T.: 6.536 min
 Delta R.T.: -0.019 min
 Response: 63662072
 Conc: 628.84 ng/ml



#31 AR-1260-1

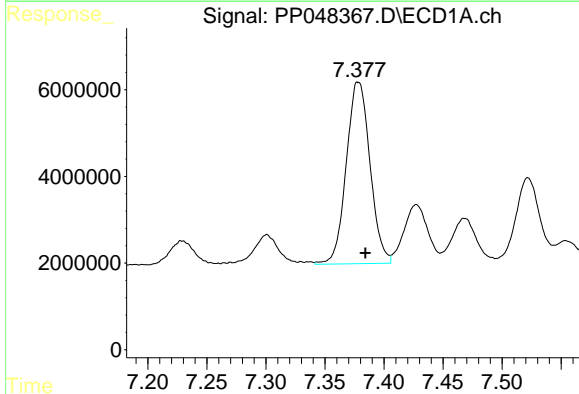
R.T.: 7.091 min
 Delta R.T.: -0.005 min
 Response: 50992494
 Conc: 546.33 ng/ml

Instrument :
 ECD_P
 ClientSampleId :



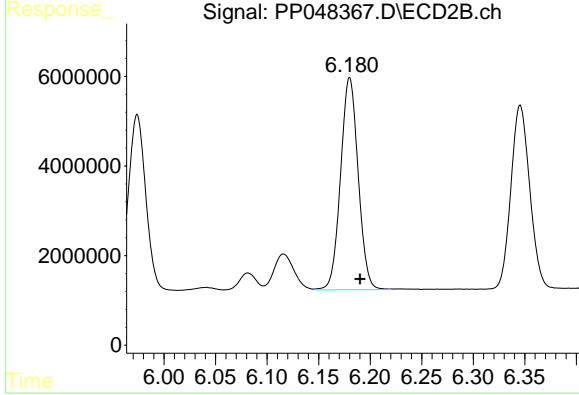
#31 AR-1260-1

R.T.: 5.974 min
 Delta R.T.: -0.011 min
 Response: 46500955
 Conc: 543.21 ng/ml



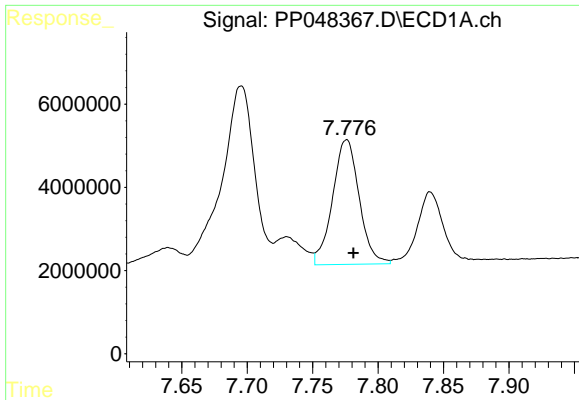
#32 AR-1260-2

R.T.: 7.378 min
 Delta R.T.: -0.006 min
 Response: 58711328
 Conc: 525.21 ng/ml



#32 AR-1260-2

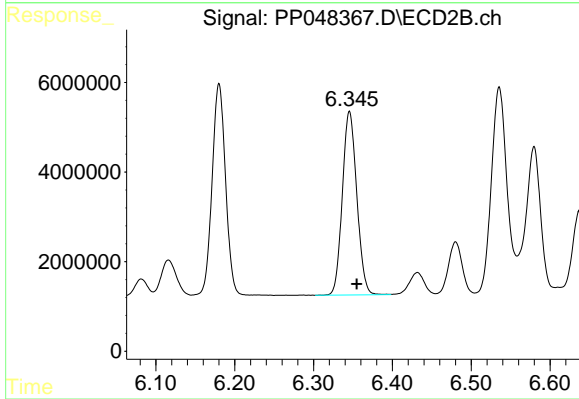
R.T.: 6.180 min
 Delta R.T.: -0.010 min
 Response: 56384367
 Conc: 547.01 ng/ml



#33 AR-1260-3

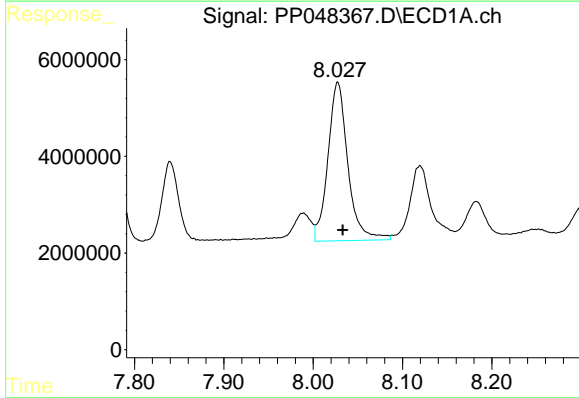
R.T.: 7.776 min
Delta R.T.: -0.005 min
Response: 42442948
Conc: 495.50 ng/ml

Instrument :
ECD_P
ClientSampleId :



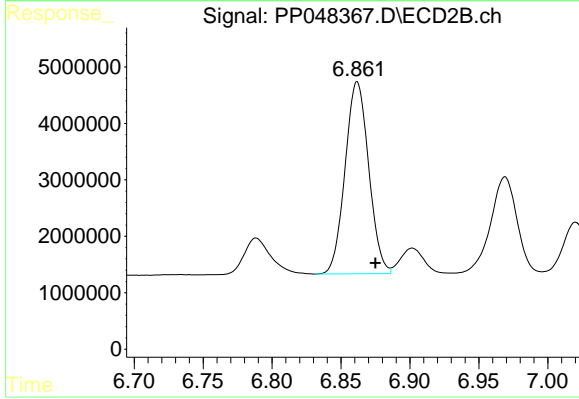
#33 AR-1260-3

R.T.: 6.346 min
Delta R.T.: -0.009 min
Response: 52304029
Conc: 528.20 ng/ml



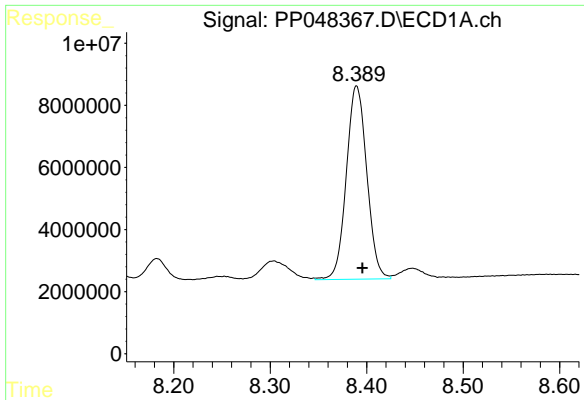
#34 AR-1260-4

R.T.: 8.028 min
Delta R.T.: -0.006 min
Response: 50962823
Conc: 491.18 ng/ml



#34 AR-1260-4

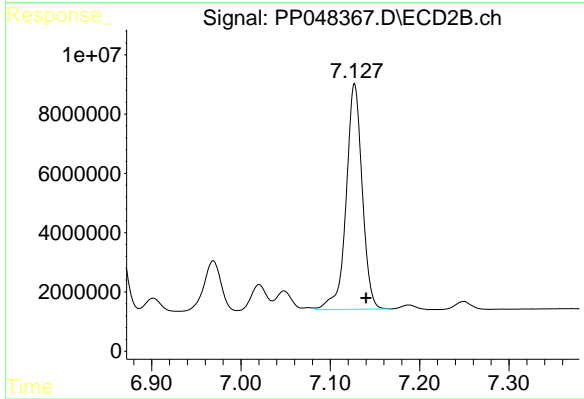
R.T.: 6.862 min
Delta R.T.: -0.013 min
Response: 40615033
Conc: 487.86 ng/ml



#35 AR-1260-5

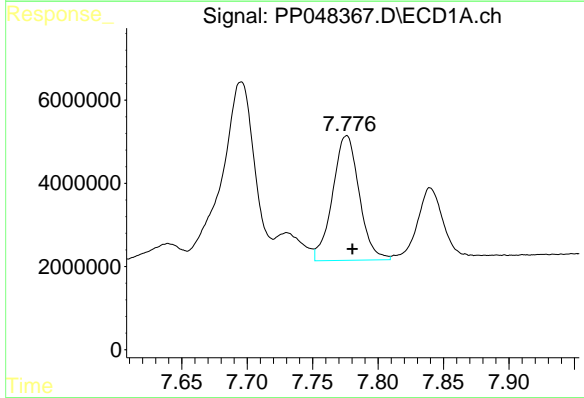
R.T.: 8.390 min
 Delta R.T.: -0.006 min
 Response: 91926974
 Conc: 445.48 ng/ml

Instrument :
 ECD_P
 ClientSampleId :



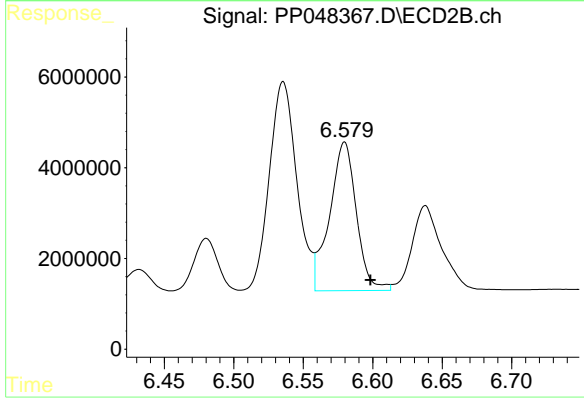
#35 AR-1260-5

R.T.: 7.127 min
 Delta R.T.: -0.013 min
 Response: 95076574
 Conc: 479.19 ng/ml



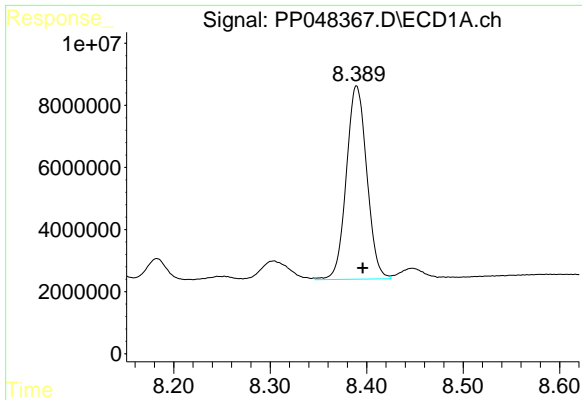
#36 AR-1262-1

R.T.: 7.776 min
 Delta R.T.: -0.005 min
 Response: 42442948
 Conc: 372.14 ng/ml



#36 AR-1262-1

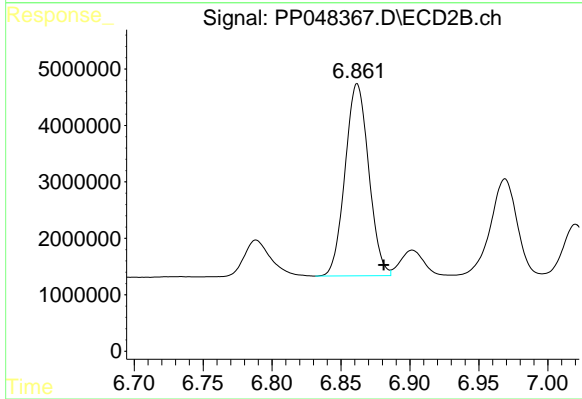
R.T.: 6.580 min
 Delta R.T.: -0.018 min
 Response: 43941977
 Conc: 406.71 ng/ml



#37 AR-1262-2

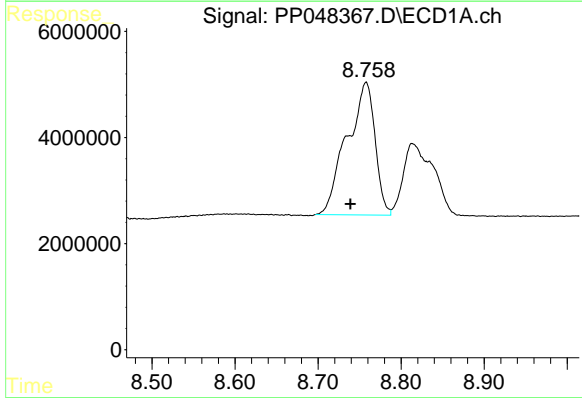
R.T.: 8.390 min
 Delta R.T.: -0.006 min
 Response: 91926974
 Conc: 431.28 ng/ml

Instrument :
 ECD_P
 ClientSampleId :



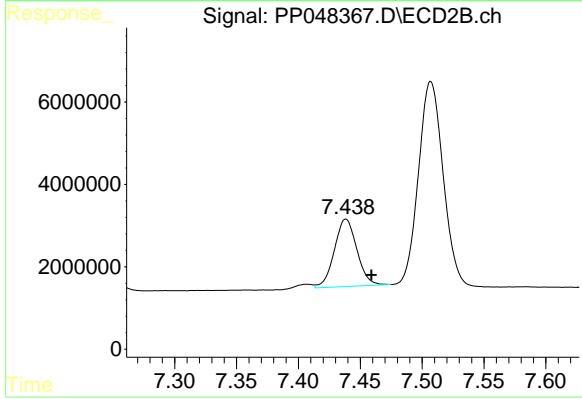
#37 AR-1262-2

R.T.: 6.862 min
 Delta R.T.: -0.019 min
 Response: 40615033
 Conc: 410.40 ng/ml



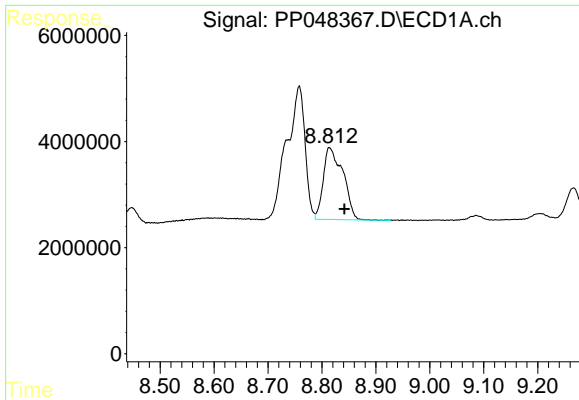
#38 AR-1262-3

R.T.: 8.758 min
 Delta R.T.: 0.019 min
 Response: 58881635
 Conc: 631.82 ng/ml



#38 AR-1262-3

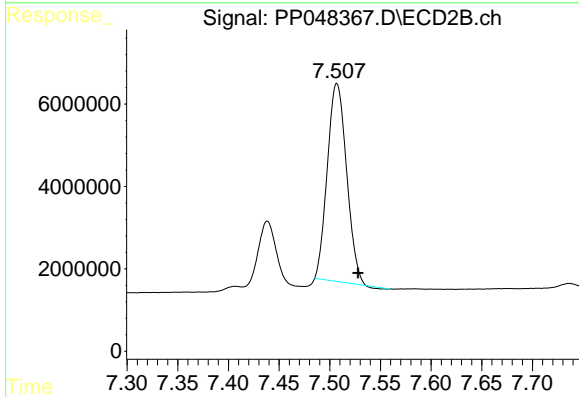
R.T.: 7.438 min
 Delta R.T.: -0.021 min
 Response: 20760788
 Conc: 275.87 ng/ml



#39 AR-1262-4

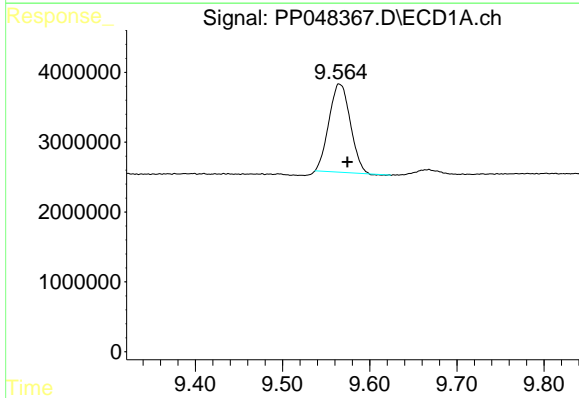
R.T.: 8.815 min
 Delta R.T.: -0.027 min
 Response: 34368186
 Conc: 578.02 ng/ml

Instrument :
 ECD_P
 ClientSampleId :



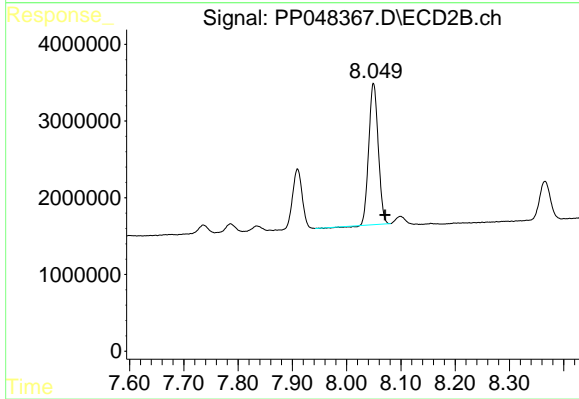
#39 AR-1262-4

R.T.: 7.507 min
 Delta R.T.: -0.021 min
 Response: 63368448
 Conc: 435.08 ng/ml



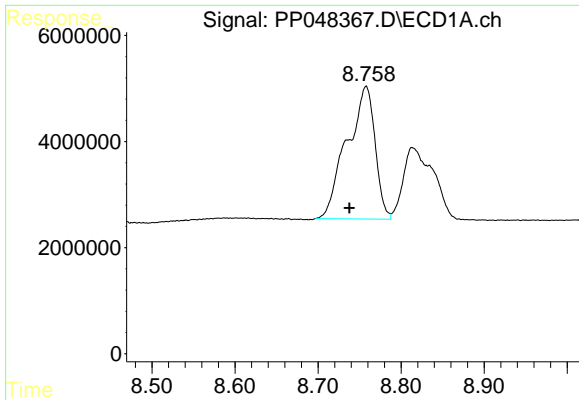
#40 AR-1262-5

R.T.: 9.566 min
 Delta R.T.: -0.008 min
 Response: 21457316
 Conc: 271.11 ng/ml



#40 AR-1262-5

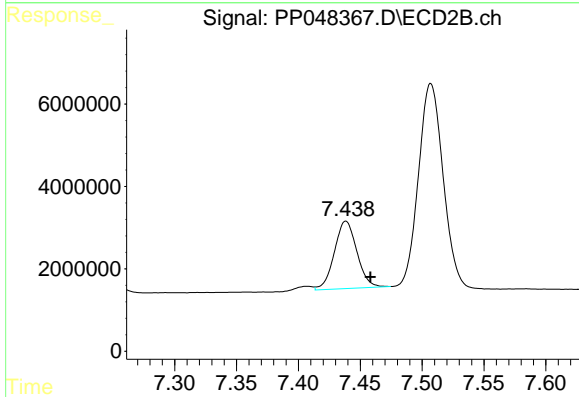
R.T.: 8.050 min
 Delta R.T.: -0.021 min
 Response: 22201331
 Conc: 328.94 ng/ml



#41 AR-1268-1

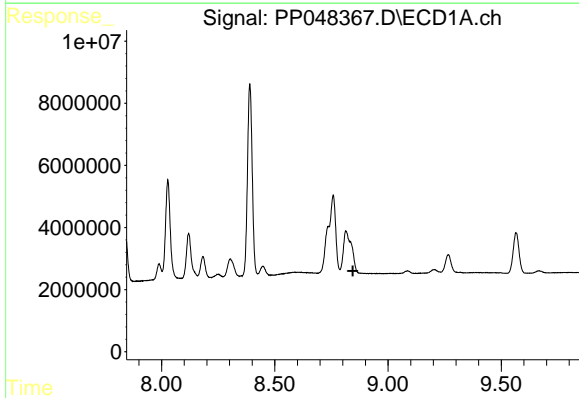
R.T.: 8.758 min
 Delta R.T.: 0.020 min
 Response: 58881635
 Conc: 222.59 ng/ml

Instrument :
 ECD_P
 ClientSampleId :



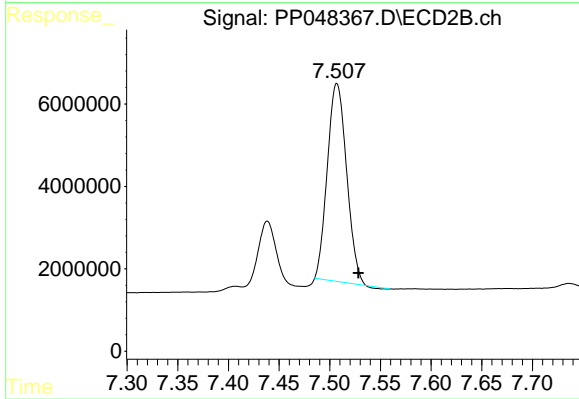
#41 AR-1268-1

R.T.: 7.438 min
 Delta R.T.: -0.020 min
 Response: 20760788
 Conc: 88.89 ng/ml



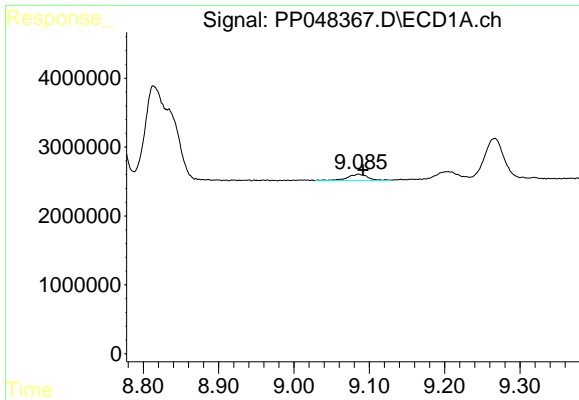
#42 AR-1268-2

R.T.: 0.000 min
 Exp R.T. : 8.845 min
 Response: 0
 Conc: N.D.



#42 AR-1268-2

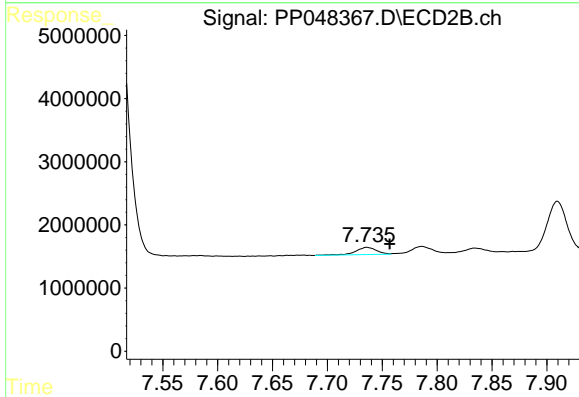
R.T.: 7.507 min
 Delta R.T.: -0.021 min
 Response: 63368448
 Conc: 292.88 ng/ml



#43 AR-1268-3

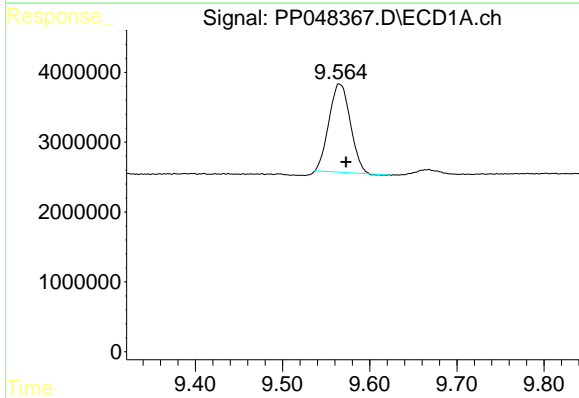
R.T.: 9.086 min
 Delta R.T.: -0.006 min
 Response: 1784907
 Conc: 8.68 ng/ml

Instrument :
 ECD_P
 ClientSampleId :



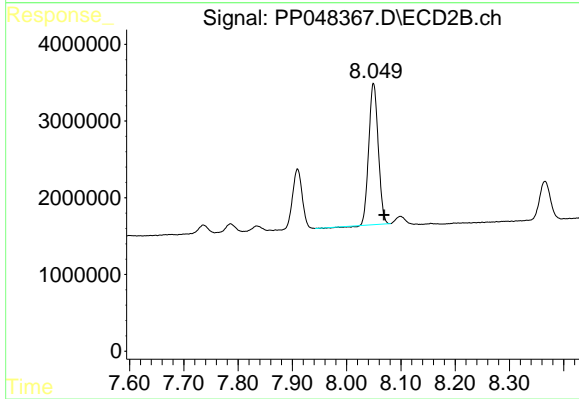
#43 AR-1268-3

R.T.: 7.736 min
 Delta R.T.: -0.021 min
 Response: 1505246
 Conc: 8.10 ng/ml



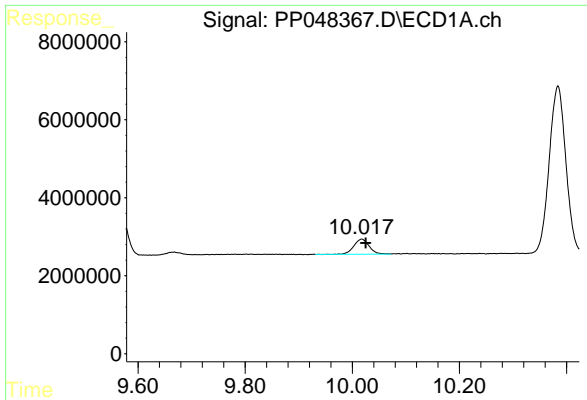
#44 AR-1268-4

R.T.: 9.566 min
 Delta R.T.: -0.007 min
 Response: 21457316
 Conc: 238.87 ng/ml



#44 AR-1268-4

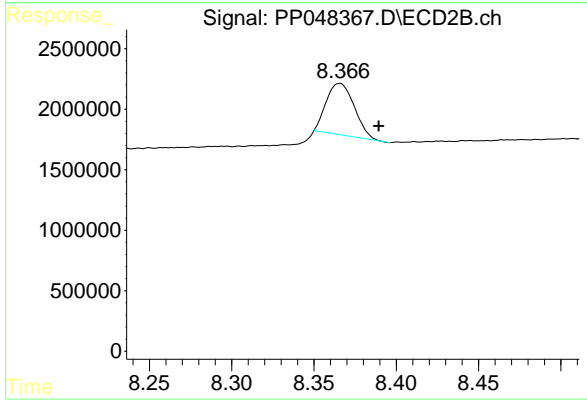
R.T.: 8.050 min
 Delta R.T.: -0.020 min
 Response: 22201331
 Conc: 270.25 ng/ml



#45 AR-1268-5

R.T.: 10.017 min
Delta R.T.: -0.008 min
Response: 7748768
Conc: 10.97 ng/ml

Instrument :
ECD_P
ClientSampleId :



#45 AR-1268-5

R.T.: 8.366 min
Delta R.T.: -0.024 min
Response: 5017284
Conc: 8.28 ng/ml