

Data Path : Z:\pestpcbsrv\HPCHEM1\ECD\_P\Data\PP060222\  
 Data File : PP048369.D  
 Signal(s) : Signal #1: ECD1A.ch Signal #2: ECD2B.ch  
 Acq On : 03 Jun 2022 04:29  
 Operator : YP\AJ  
 Sample : N2989-19  
 Misc :  
 ALS Vial : 64 Sample Multiplier: 1

Instrument :  
 ECD\_P  
 ClientSampleId :

Integration File signal 1: autoint1.e  
 Integration File signal 2: autoint2.e  
 Quant Time: Jun 03 06:23:22 2022  
 Quant Method : Z:\pestpcbsrv\HPCHEM1\ECD\_P\methods\PP052722.M  
 Quant Title : GC EXTRACTABLES  
 QLast Update : Fri May 27 23:53:39 2022  
 Response via : Initial Calibration  
 Integrator: ChemStation

Volume Inj. : 2 µl  
 Signal #1 Phase : ZB-MR1 Signal #2 Phase: ZB-MR2  
 Signal #1 Info : 30Mx0.32mmx 0.50µ Signal #2 Info : 30M x 0.32mm x 0.25µm

| Compound                    | RT#1   | RT#2   | Resp#1   | Resp#2   | ng/ml   | ng/ml    |
|-----------------------------|--------|--------|----------|----------|---------|----------|
| System Monitoring Compounds |        |        |          |          |         |          |
| 1) SA Tetrachlo...          | 4.034  | 3.214  | 48813284 | 39865545 | 20.845  | 20.228   |
| 2) SA Decachlor...          | 10.384 | 8.641  | 26863644 | 22962424 | 13.821  | 14.205   |
| Target Compounds            |        |        |          |          |         |          |
| 3) L1 AR-1016-1             | 5.324  | 4.398  | 322819   | 108018   | 3.828   | 1.606 #  |
| 4) L1 AR-1016-2             | 5.324f | 4.398  | 322819   | 108018   | 2.728   | 1.160 #  |
| 5) L1 AR-1016-3             | 5.393f | 0.000  | 1060795  | 0        | 15.698  | N.D. #   |
| 6) L1 AR-1016-4             | 5.540  | 4.648  | 490982   | 135630   | 7.965   | 3.560 #  |
| 7) L1 AR-1016-5             | 5.838  | 4.875  | 2103617  | 175026   | 37.345  | 3.666 #  |
| 8) L2 AR-1221-1             | 4.271  | 0.000  | 3054012  | 0        | 115.523 | N.D. #   |
| 9) L2 AR-1221-2             | 4.368  | 0.000  | 753008   | 0        | 36.766  | N.D. #   |
| 10) L2 AR-1221-3            | 4.449  | 3.658f | -172475  | 173564   | N.D.    | 3.500 #  |
| 12) L3 AR-1232-2            | 0.000  | 4.398  | 0        | 108018   | N.D.    | 2.681 #  |
| 13) L3 AR-1232-3            | 5.324f | 0.000  | 322819   | 0        | 6.506   | N.D. #   |
| 14) L3 AR-1232-4            | 5.540  | 0.000  | 490982   | 0        | 20.539  | N.D. #   |
| 15) L3 AR-1232-5            | 5.650f | 4.875  | 1601546  | 175026   | 98.030  | 8.935 #  |
| 16) L4 AR-1242-1            | 5.324  | 4.398  | 322819   | 108018   | 5.773   | 2.265 #  |
| 17) L4 AR-1242-2            | 5.324f | 4.398  | 322819   | 108018   | 3.925   | 1.626 #  |
| 18) L4 AR-1242-3            | 5.393f | 0.000  | 1060795  | 0        | 21.609  | N.D. #   |
| 19) L4 AR-1242-4            | 5.540  | 0.000  | 490982   | 0        | 12.407  | N.D. #   |
| 20) L4 AR-1242-5            | 0.000  | 5.241  | 0        | 342473   | N.D.    | 8.201 #  |
| 21) L5 AR-1248-1            | 5.324  | 4.398  | 322819   | 108018   | 7.484   | 2.951 #  |
| 22) L5 AR-1248-2            | 5.650f | 4.648  | 1601546  | 135630   | 28.005  | 2.848 #  |
| 23) L5 AR-1248-3            | 5.838  | 0.000  | 2103617  | 0        | 31.080  | N.D. #   |
| 24) L5 AR-1248-4            | 0.000  | 4.875  | 0        | 175026   | N.D.    | 3.004 #  |
| 25) L5 AR-1248-5            | 0.000  | 5.265f | 0        | 659827   | N.D.    | 10.939 # |
| 26) L6 AR-1254-1            | 6.267  | 5.241  | 1473352  | 342473   | 20.295  | 3.907 #  |
| 27) L6 AR-1254-2            | 6.504  | 5.414  | 2307559  | 82698    | 19.393  | 1.101 #  |
| 28) L6 AR-1254-3            | 6.922  | 5.850  | 1055826  | 1177967  | 8.888   | 9.601    |
| 29) L6 AR-1254-4            | 7.230  | 6.115f | 1584705  | 1366711  | 17.569  | 18.202   |
| 30) L6 AR-1254-5            | 7.695  | 6.536f | 11990948 | 9450723  | 129.401 | 93.353 # |
| 31) L7 AR-1260-1            | 7.092  | 5.974  | 2489378  | 1349613  | 26.671  | 15.766 # |
| 32) L7 AR-1260-2            | 7.378  | 6.180  | 7321421  | 5910609  | 65.495  | 57.341   |
| 33) L7 AR-1260-3            | 7.776  | 6.348  | 10539511 | 2958459  | 123.044 | 29.877 # |
| 34) L7 AR-1260-4            | 8.028  | 6.862  | 11306970 | 5463201  | 108.976 | 65.624 # |
| 35) L7 AR-1260-5            | 8.391  | 7.127  | 19551968 | 18576155 | 94.748  | 93.624   |
| 36) L8 AR-1262-1            | 7.776  | 6.580f | 10539511 | 9377403  | 92.412  | 86.794   |
| 37) L8 AR-1262-2            | 8.391  | 6.862f | 19551968 | 5463201  | 91.729  | 55.204 # |
| 38) L8 AR-1262-3            | 8.757f | 7.439f | 12990521 | 6165792  | 139.393 | 81.932 # |
| 39) L8 AR-1262-4            | 8.815f | 7.507f | 7440059  | 14135528 | 125.130 | 97.054   |
| 40) L8 AR-1262-5            | 9.566  | 8.050f | 5569252  | 5958461  | 70.365  | 88.283 # |
| 41) L9 AR-1268-1            | 8.757f | 7.439f | 12990521 | 6165792  | 49.107  | 26.401 # |
| 42) L9 AR-1268-2            | 0.000  | 7.507f | 0        | 14135528 | N.D.    | 65.332 # |

Data Path : Z:\pestpcbsrv\HPCHEM1\ECD\_P\Data\PP060222\  
 Data File : PP048369.D  
 Signal(s) : Signal #1: ECD1A.ch Signal #2: ECD2B.ch  
 Acq On : 03 Jun 2022 04:29  
 Operator : YP\AJ  
 Sample : N2989-19  
 Misc :  
 ALS Vial : 64 Sample Multiplier: 1

Instrument :  
 ECD\_P  
 ClientSampleId :

Integration File signal 1: autoint1.e  
 Integration File signal 2: autoint2.e  
 Quant Time: Jun 03 06:23:22 2022  
 Quant Method : Z:\pestpcbsrv\HPCHEM1\ECD\_P\methods\PP052722.M  
 Quant Title : GC EXTRACTABLES  
 QLast Update : Fri May 27 23:53:39 2022  
 Response via : Initial Calibration  
 Integrator: ChemStation

Volume Inj. : 2 µl  
 Signal #1 Phase : ZB-MR1 Signal #2 Phase: ZB-MR2  
 Signal #1 Info : 30Mx0.32mmx 0.50µ Signal #2 Info : 30M x 0.32mm x 0.25µm

|     | Compound     | RT#1   | RT#2   | Resp#1  | Resp#2  | ng/ml  | ng/ml   |
|-----|--------------|--------|--------|---------|---------|--------|---------|
| 43) | L9 AR-1268-3 | 9.079  | 7.736f | 810894  | -350494 | 3.944  | N.D. #  |
| 44) | L9 AR-1268-4 | 9.566  | 8.050f | 5569252 | 5958461 | 61.998 | 72.531  |
| 45) | L9 AR-1268-5 | 10.019 | 8.367f | 2081805 | 1082200 | 2.949  | 1.786 # |

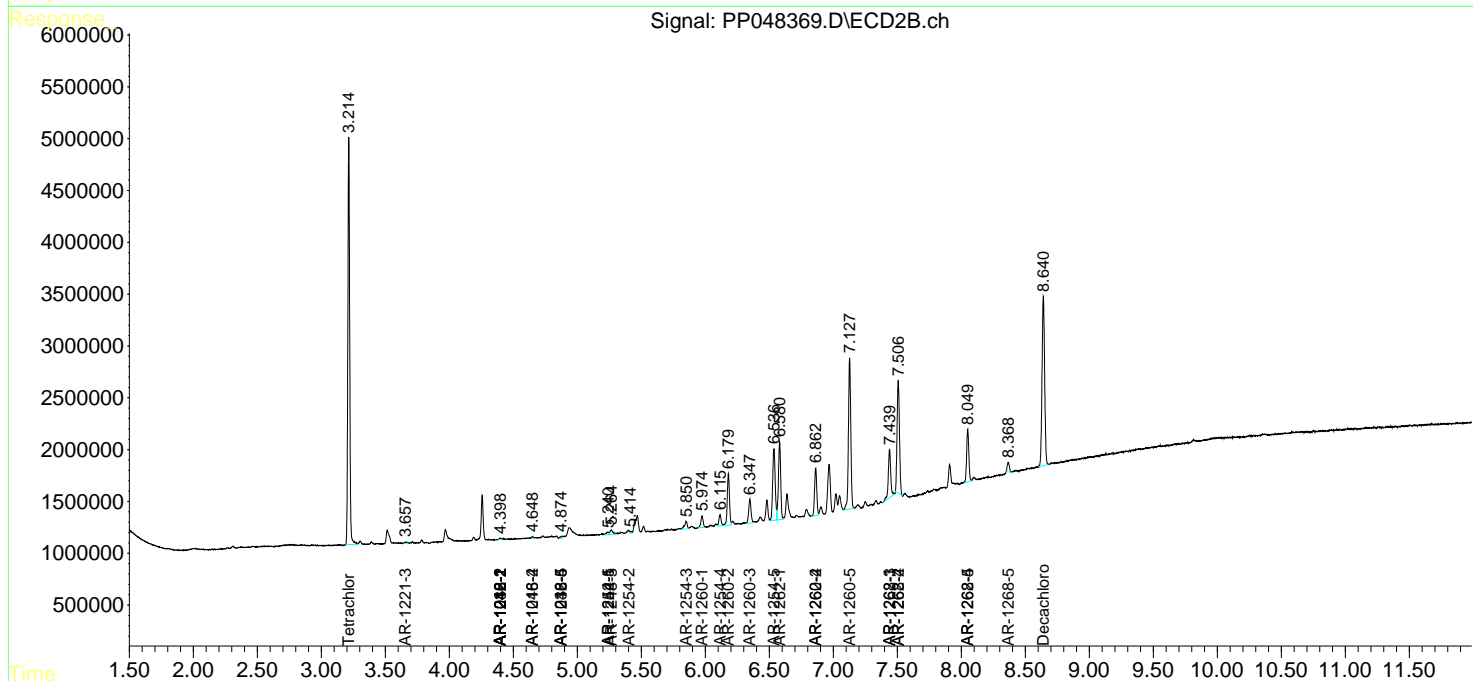
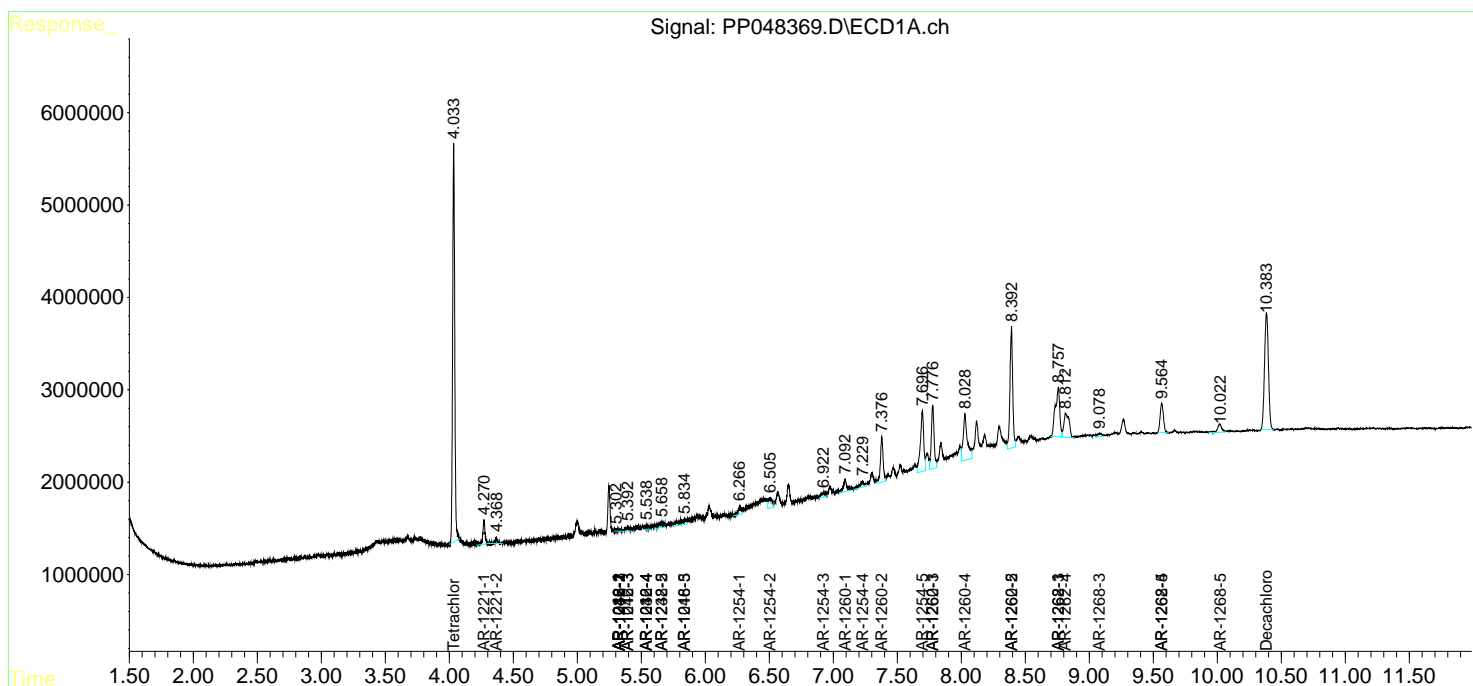
(f)=RT Delta > 1/2 Window (#)=Amounts differ by > 25% (m)=manual int.

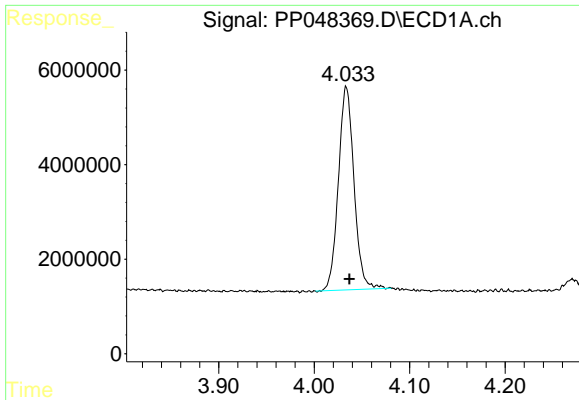
Data Path : Z:\pestpcbsrv\HPCHEM1\ECD\_P\Data\PP060222\  
 Data File : PP048369.D  
 Signal(s) : Signal #1: ECD1A.ch Signal #2: ECD2B.ch  
 Acq On : 03 Jun 2022 04:29  
 Operator : YP\AJ  
 Sample : N2989-19  
 Misc :  
 ALS Vial : 64 Sample Multiplier: 1

Instrument :  
 ECD\_P  
 ClientSampleId :

Integration File signal 1: autoint1.e  
 Integration File signal 2: autoint2.e  
 Quant Time: Jun 03 06:23:22 2022  
 Quant Method : Z:\pestpcbsrv\HPCHEM1\ECD\_P\methods\PP052722.M  
 Quant Title : GC EXTRACTABLES  
 QLast Update : Fri May 27 23:53:39 2022  
 Response via : Initial Calibration  
 Integrator: ChemStation

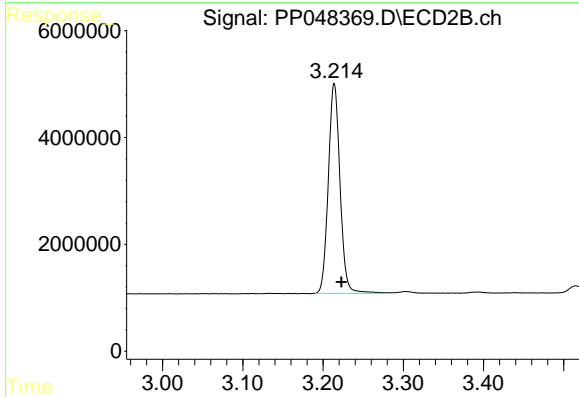
Volume Inj. : 2 µl  
 Signal #1 Phase : ZB-MR1 Signal #2 Phase: ZB-MR2  
 Signal #1 Info : 30Mx0.32mmx 0.50µ Signal #2 Info : 30M x 0.32mm x 0.25µm



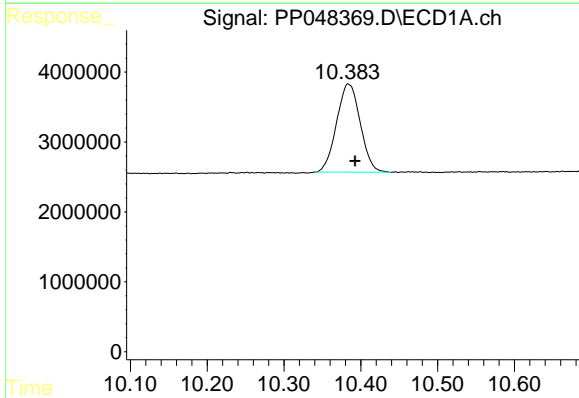


#1 Tetrachloro-m-xylene  
 R.T.: 4.034 min  
 Delta R.T.: -0.003 min  
 Response: 48813284  
 Conc: 20.84 ng/ml

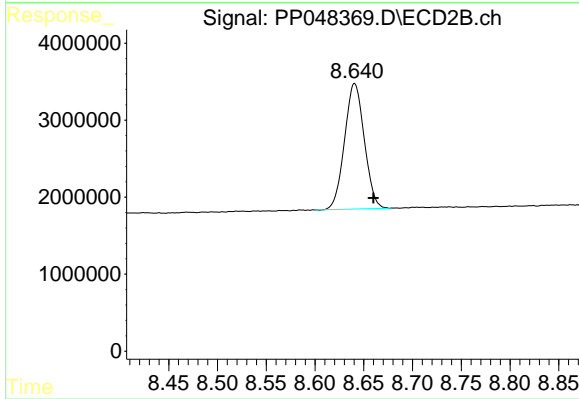
Instrument :  
 ECD\_P  
 ClientSampleId :



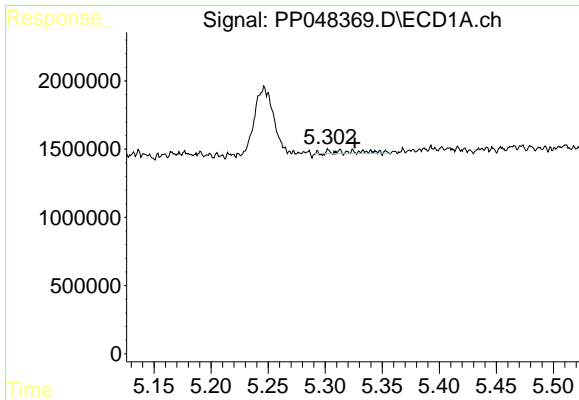
#1 Tetrachloro-m-xylene  
 R.T.: 3.214 min  
 Delta R.T.: -0.009 min  
 Response: 39865545  
 Conc: 20.23 ng/ml



#2 Decachlorobiphenyl  
 R.T.: 10.384 min  
 Delta R.T.: -0.008 min  
 Response: 26863644  
 Conc: 13.82 ng/ml



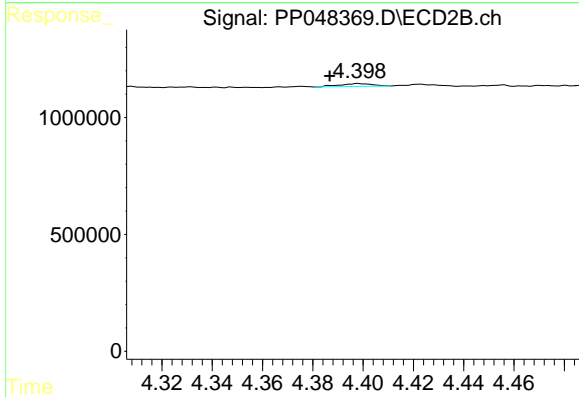
#2 Decachlorobiphenyl  
 R.T.: 8.641 min  
 Delta R.T.: -0.019 min  
 Response: 22962424  
 Conc: 14.21 ng/ml



#3 AR-1016-1

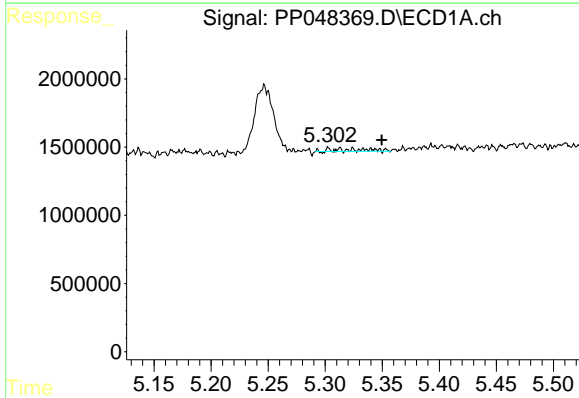
R.T.: 5.324 min  
 Delta R.T.: -0.002 min  
 Response: 322819  
 Conc: 3.83 ng/ml

Instrument :  
 ECD\_P  
 ClientSampleId :



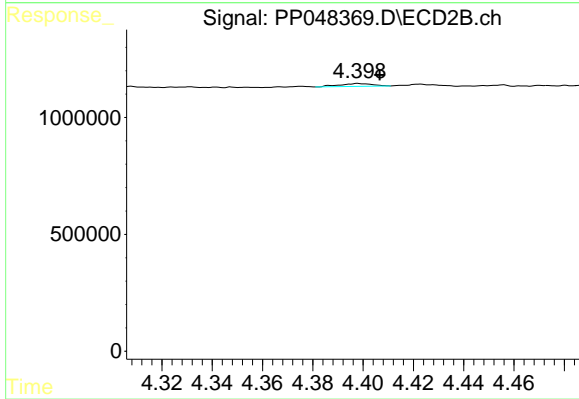
#3 AR-1016-1

R.T.: 4.398 min  
 Delta R.T.: 0.011 min  
 Response: 108018  
 Conc: 1.61 ng/ml



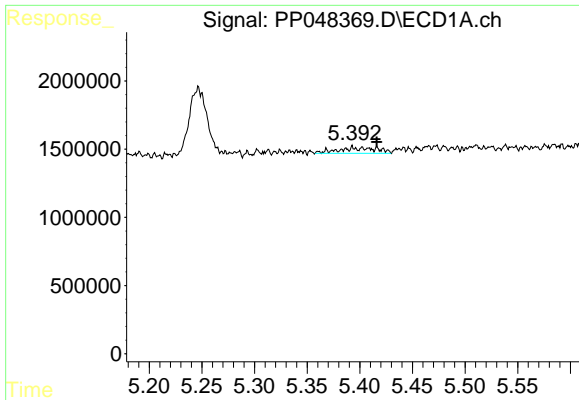
#4 AR-1016-2

R.T.: 5.324 min  
 Delta R.T.: -0.025 min  
 Response: 322819  
 Conc: 2.73 ng/ml



#4 AR-1016-2

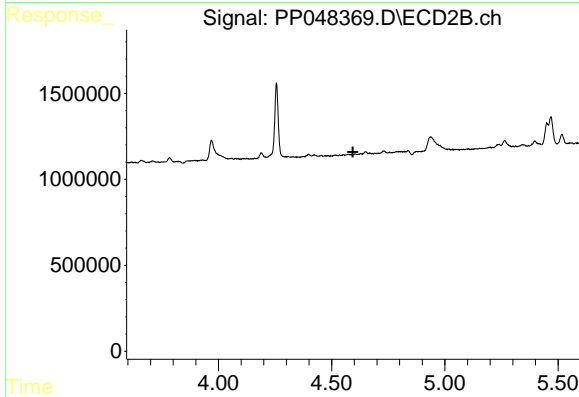
R.T.: 4.398 min  
 Delta R.T.: -0.009 min  
 Response: 108018  
 Conc: 1.16 ng/ml



#5 AR-1016-3

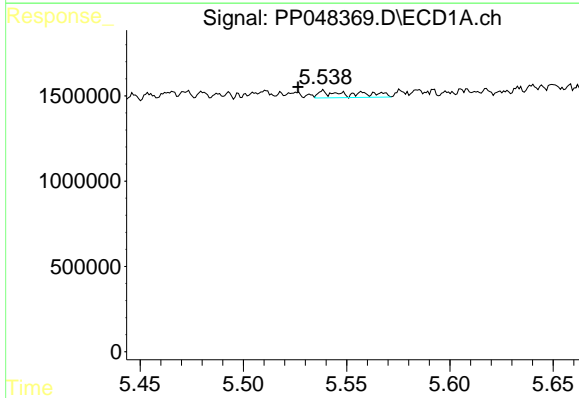
R.T.: 5.393 min  
 Delta R.T.: -0.023 min  
 Response: 1060795  
 Conc: 15.70 ng/ml

Instrument :  
 ECD\_P  
 ClientSampleId :



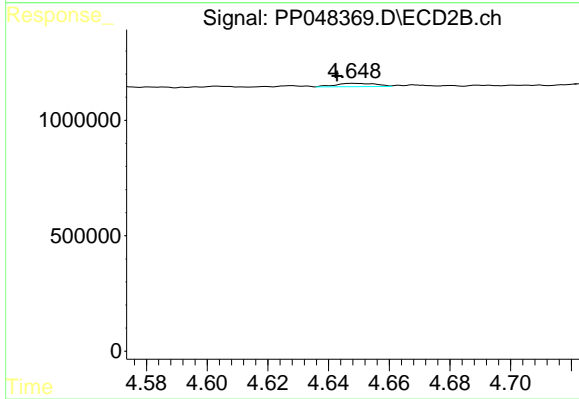
#5 AR-1016-3

R.T.: 0.000 min  
 Exp R.T. : 4.594 min  
 Response: 0  
 Conc: N.D.



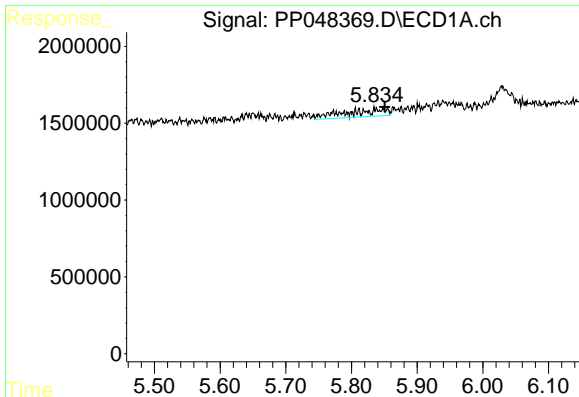
#6 AR-1016-4

R.T.: 5.540 min  
 Delta R.T.: 0.013 min  
 Response: 490982  
 Conc: 7.97 ng/ml



#6 AR-1016-4

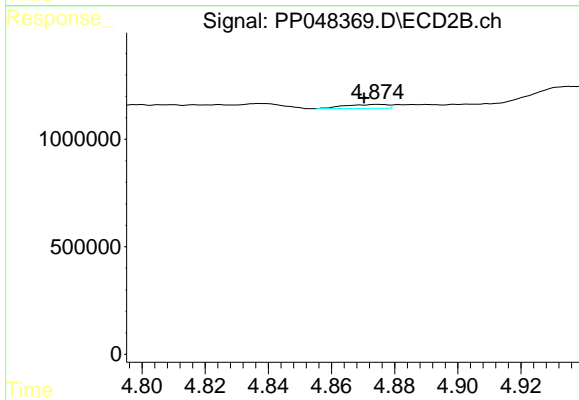
R.T.: 4.648 min  
 Delta R.T.: 0.006 min  
 Response: 135630  
 Conc: 3.56 ng/ml



#7 AR-1016-5

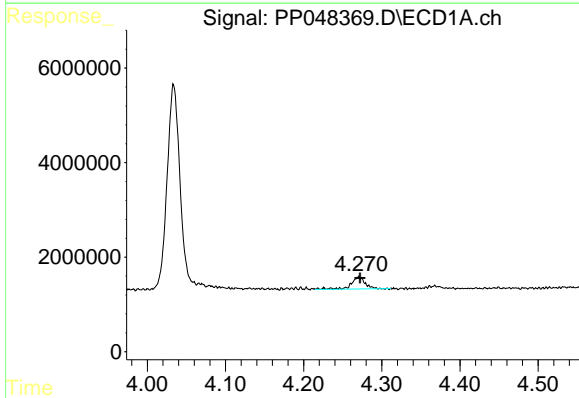
R.T.: 5.838 min  
 Delta R.T.: -0.012 min  
 Response: 2103617  
 Conc: 37.35 ng/ml

Instrument :  
 ECD\_P  
 ClientSampleId :



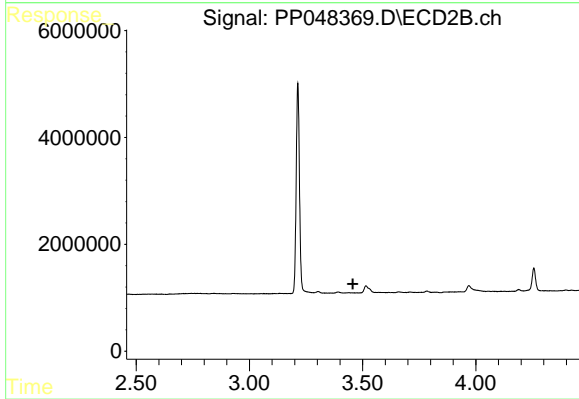
#7 AR-1016-5

R.T.: 4.875 min  
 Delta R.T.: 0.004 min  
 Response: 175026  
 Conc: 3.67 ng/ml



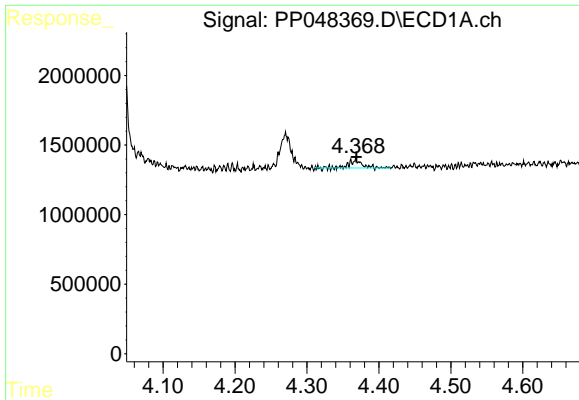
#8 AR-1221-1

R.T.: 4.271 min  
 Delta R.T.: -0.002 min  
 Response: 3054012  
 Conc: 115.52 ng/ml



#8 AR-1221-1

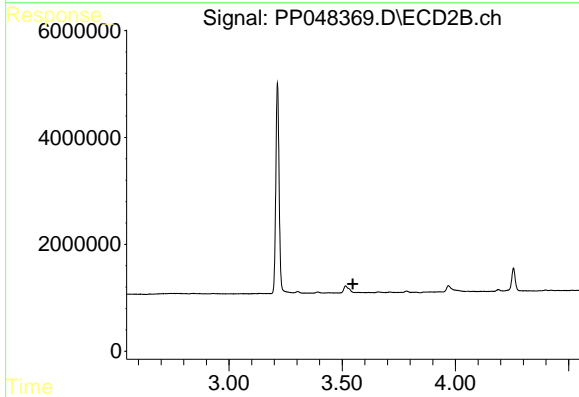
R.T.: 0.000 min  
 Exp R.T.: 3.457 min  
 Response: 0  
 Conc: N.D.



#9 AR-1221-2

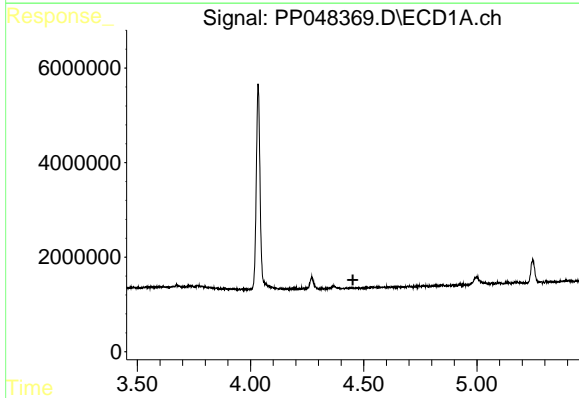
R.T.: 4.368 min  
 Delta R.T.: -0.001 min  
 Response: 753008  
 Conc: 36.77 ng/ml

Instrument :  
 ECD\_P  
 ClientSampleId :



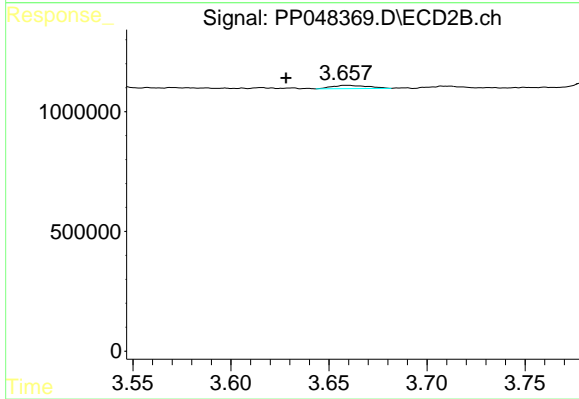
#9 AR-1221-2

R.T.: 0.000 min  
 Exp R.T. : 3.547 min  
 Response: 0  
 Conc: N.D.



#10 AR-1221-3

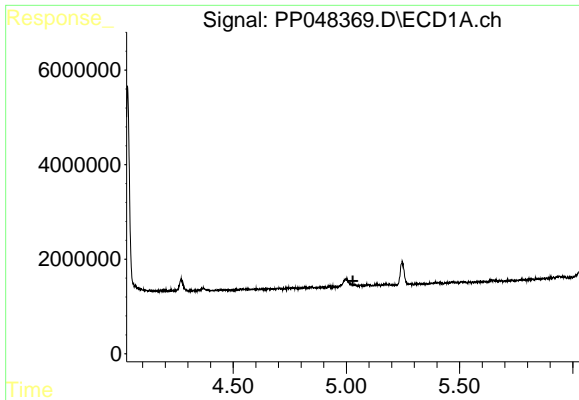
R.T.: 4.449 min  
 Delta R.T.: -0.004 min  
 Response: -172475  
 Conc: N.D.



#10 AR-1221-3

R.T.: 3.658 min  
 Delta R.T.: 0.030 min  
 Response: 173564  
 Conc: 3.50 ng/ml

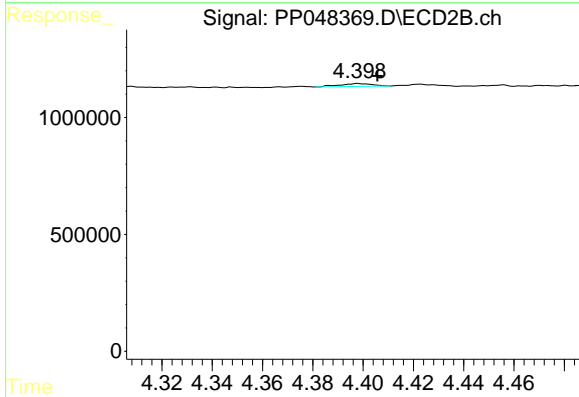




#12 AR-1232-2

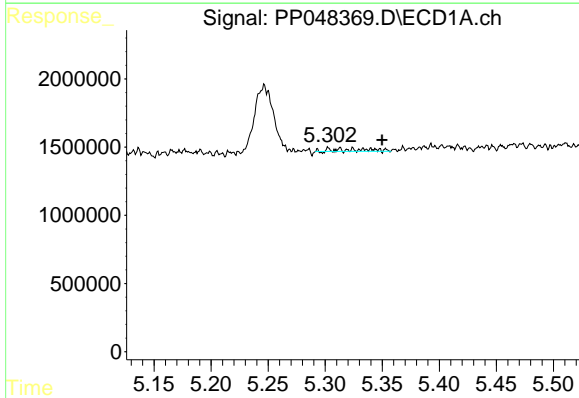
R.T.: 0.000 min  
 Exp R.T.: 5.029 min  
 Response: 0  
 Conc: N.D.

Instrument :  
 ECD\_P  
 ClientSampleId :



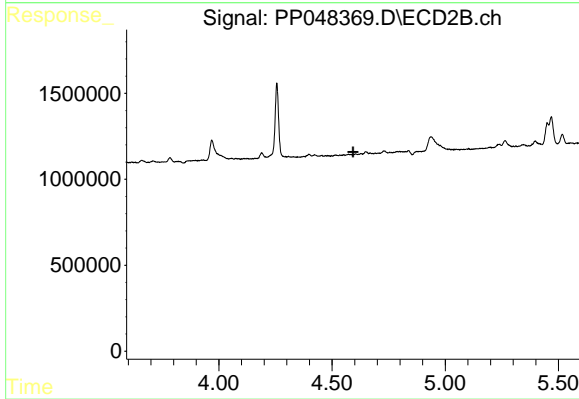
#12 AR-1232-2

R.T.: 4.398 min  
 Delta R.T.: -0.008 min  
 Response: 108018  
 Conc: 2.68 ng/ml



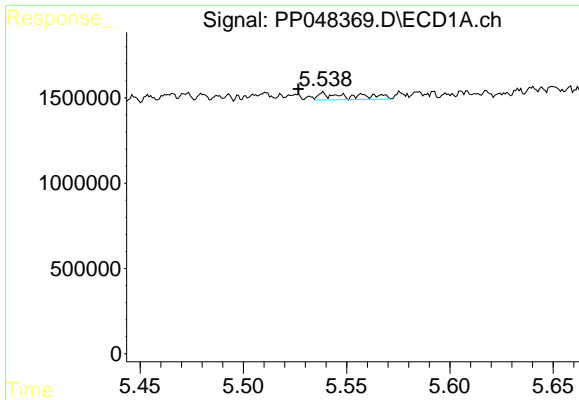
#13 AR-1232-3

R.T.: 5.324 min  
 Delta R.T.: -0.026 min  
 Response: 322819  
 Conc: 6.51 ng/ml



#13 AR-1232-3

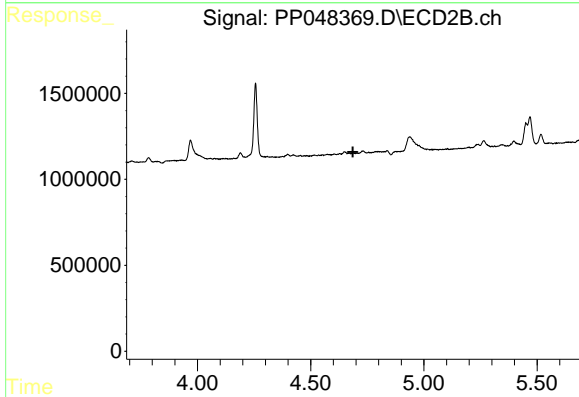
R.T.: 0.000 min  
 Exp R.T.: 4.593 min  
 Response: 0  
 Conc: N.D.



#14 AR-1232-4

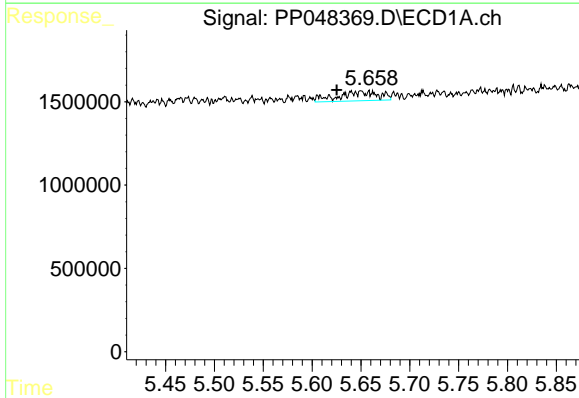
R.T.: 5.540 min  
 Delta R.T.: 0.013 min  
 Response: 490982  
 Conc: 20.54 ng/ml

Instrument :  
 ECD\_P  
 ClientSampleId :



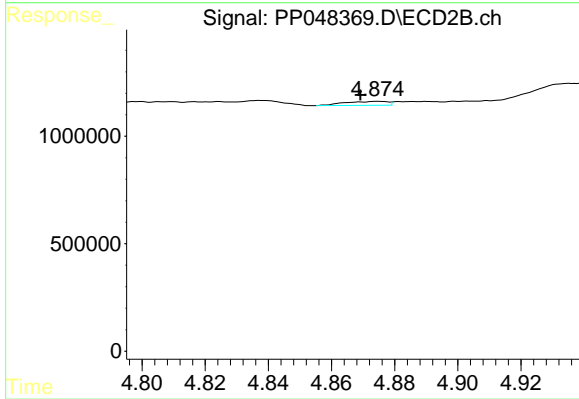
#14 AR-1232-4

R.T.: 0.000 min  
 Exp R.T. : 4.686 min  
 Response: 0  
 Conc: N.D.



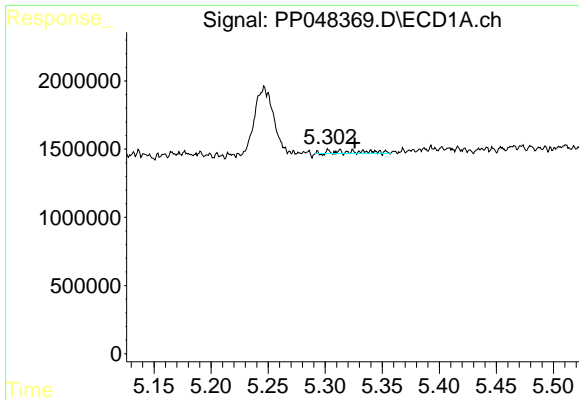
#15 AR-1232-5

R.T.: 5.650 min  
 Delta R.T.: 0.024 min  
 Response: 1601546  
 Conc: 98.03 ng/ml



#15 AR-1232-5

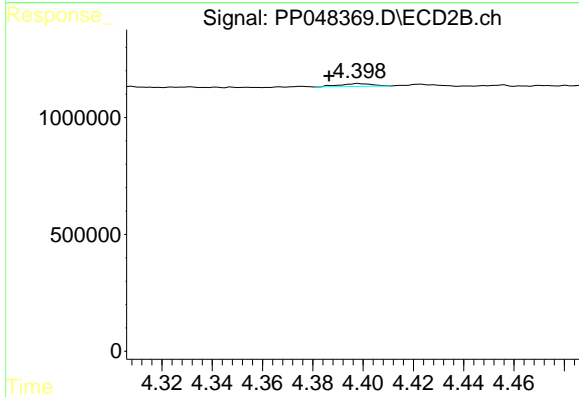
R.T.: 4.875 min  
 Delta R.T.: 0.005 min  
 Response: 175026  
 Conc: 8.94 ng/ml



#16 AR-1242-1

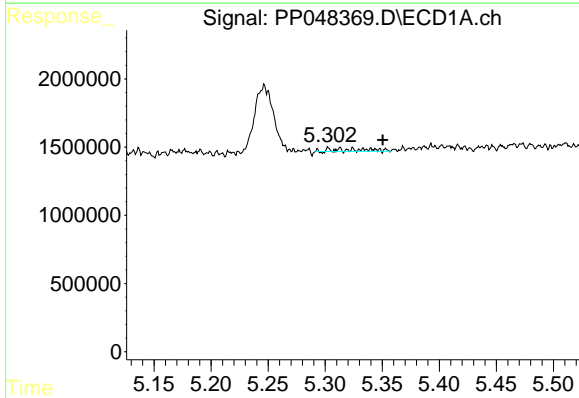
R.T.: 5.324 min  
 Delta R.T.: -0.002 min  
 Response: 322819  
 Conc: 5.77 ng/ml

Instrument :  
 ECD\_P  
 ClientSampleId :



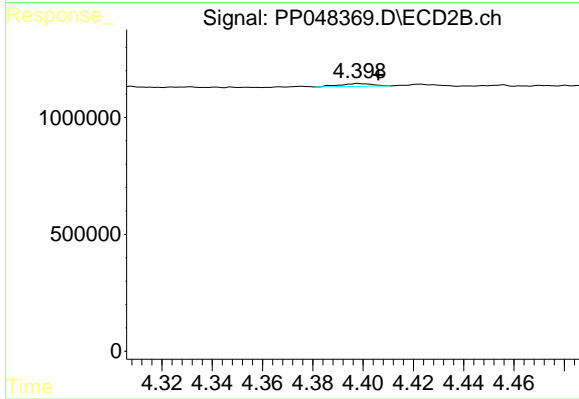
#16 AR-1242-1

R.T.: 4.398 min  
 Delta R.T.: 0.011 min  
 Response: 108018  
 Conc: 2.27 ng/ml



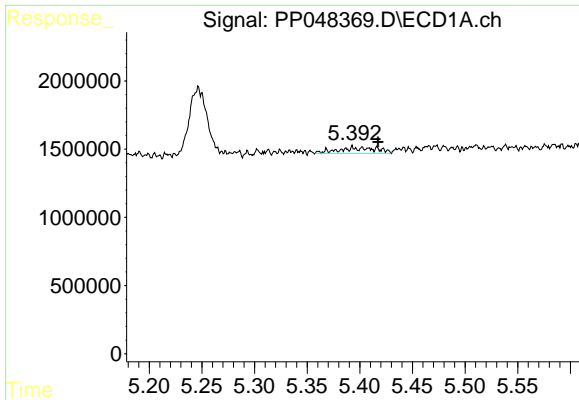
#17 AR-1242-2

R.T.: 5.324 min  
 Delta R.T.: -0.026 min  
 Response: 322819  
 Conc: 3.93 ng/ml



#17 AR-1242-2

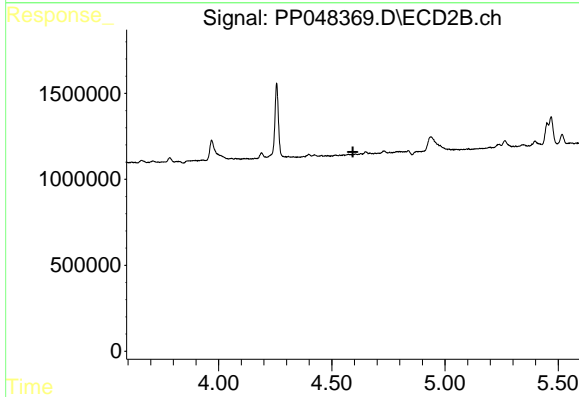
R.T.: 4.398 min  
 Delta R.T.: -0.008 min  
 Response: 108018  
 Conc: 1.63 ng/ml



#18 AR-1242-3

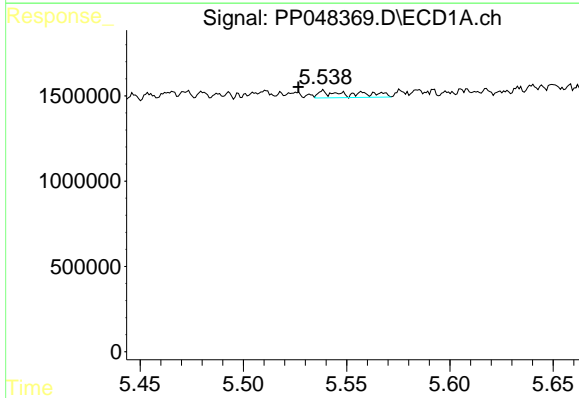
R.T.: 5.393 min  
 Delta R.T.: -0.024 min  
 Response: 1060795  
 Conc: 21.61 ng/ml

Instrument :  
 ECD\_P  
 ClientSampleId :



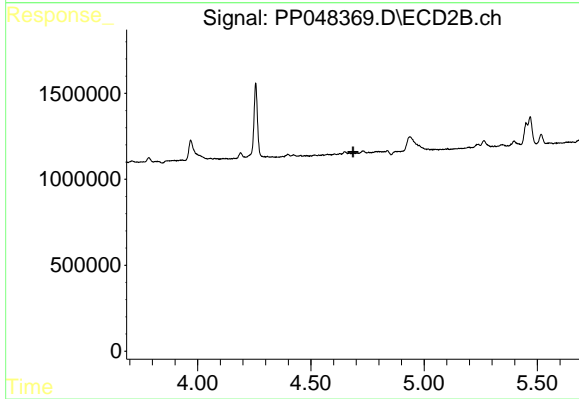
#18 AR-1242-3

R.T.: 0.000 min  
 Exp R.T. : 4.593 min  
 Response: 0  
 Conc: N.D.



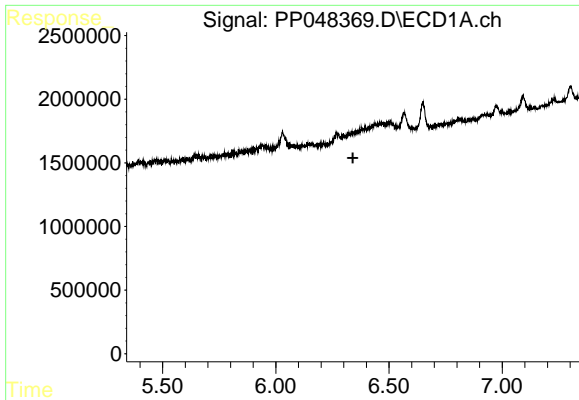
#19 AR-1242-4

R.T.: 5.540 min  
 Delta R.T.: 0.013 min  
 Response: 490982  
 Conc: 12.41 ng/ml



#19 AR-1242-4

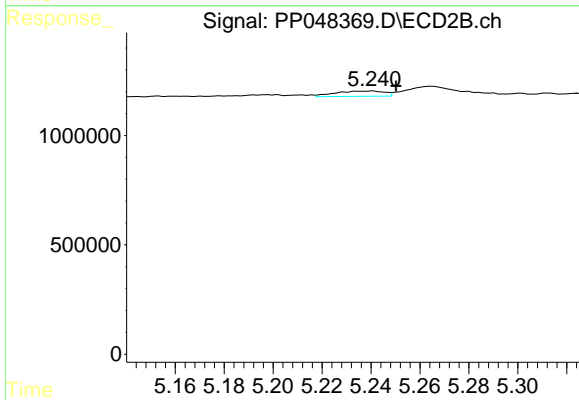
R.T.: 0.000 min  
 Exp R.T. : 4.686 min  
 Response: 0  
 Conc: N.D.



#20 AR-1242-5

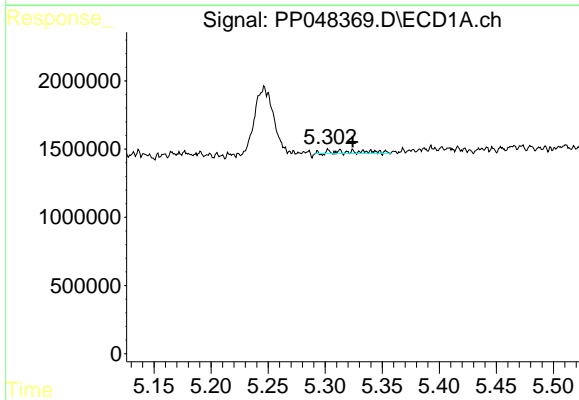
R.T.: 0.000 min  
 Exp R.T.: 6.340 min  
 Response: 0  
 Conc: N.D.

Instrument :  
 ECD\_P  
 ClientSampleId :



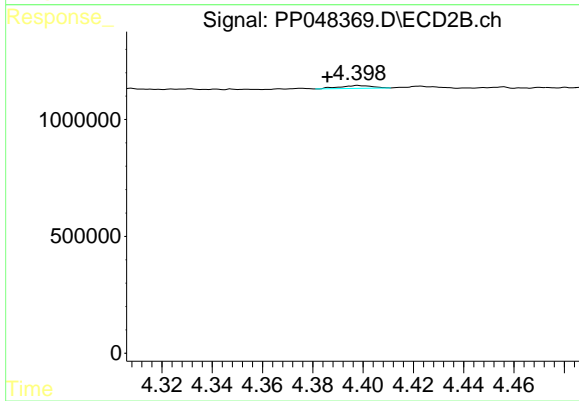
#20 AR-1242-5

R.T.: 5.241 min  
 Delta R.T.: -0.010 min  
 Response: 342473  
 Conc: 8.20 ng/ml



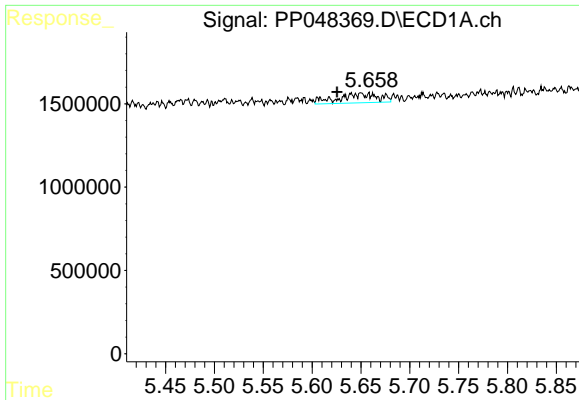
#21 AR-1248-1

R.T.: 5.324 min  
 Delta R.T.: 0.000 min  
 Response: 322819  
 Conc: 7.48 ng/ml



#21 AR-1248-1

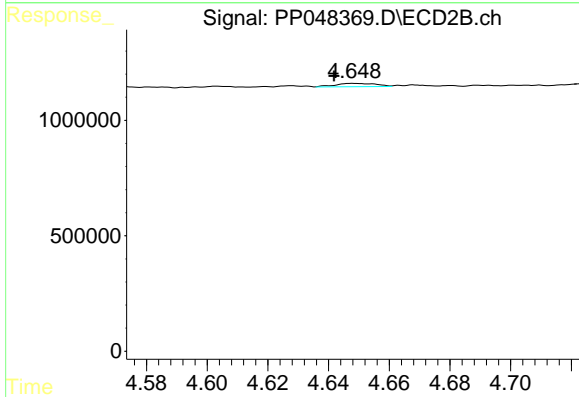
R.T.: 4.398 min  
 Delta R.T.: 0.012 min  
 Response: 108018  
 Conc: 2.95 ng/ml



#22 AR-1248-2

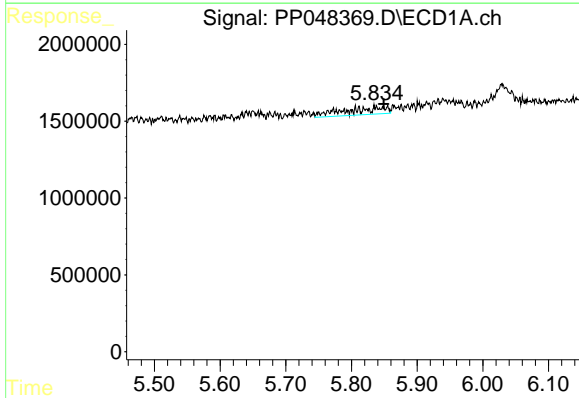
R.T.: 5.650 min  
 Delta R.T.: 0.024 min  
 Response: 1601546  
 Conc: 28.00 ng/ml

Instrument :  
 ECD\_P  
 ClientSampleId :



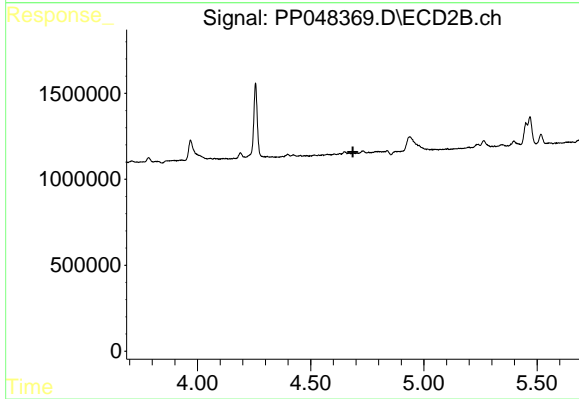
#22 AR-1248-2

R.T.: 4.648 min  
 Delta R.T.: 0.007 min  
 Response: 135630  
 Conc: 2.85 ng/ml



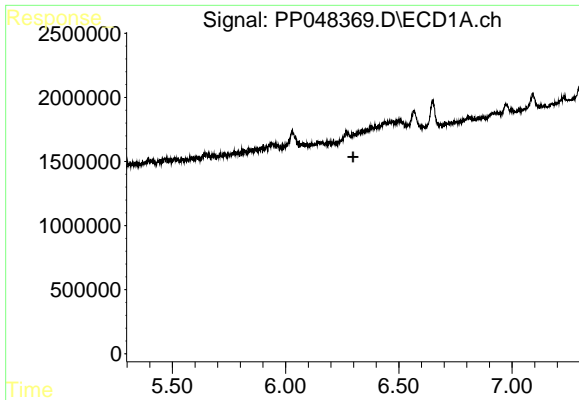
#23 AR-1248-3

R.T.: 5.838 min  
 Delta R.T.: -0.011 min  
 Response: 2103617  
 Conc: 31.08 ng/ml



#23 AR-1248-3

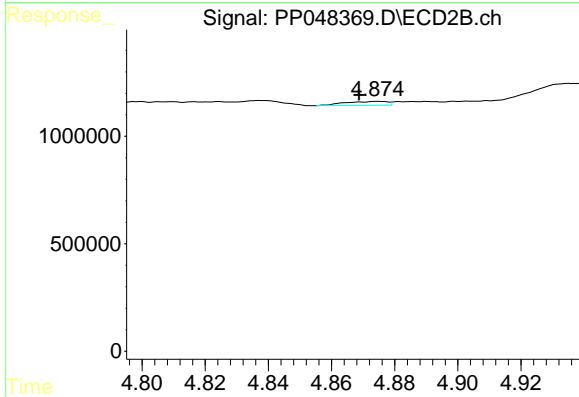
R.T.: 0.000 min  
 Exp R.T.: 4.686 min  
 Response: 0  
 Conc: N.D.



#24 AR-1248-4

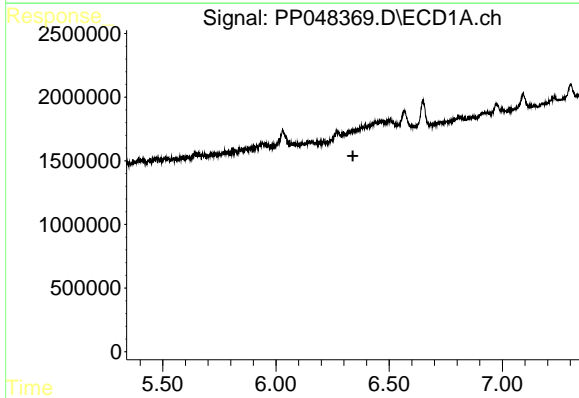
R.T.: 0.000 min  
 Exp R.T.: 6.298 min  
 Response: 0  
 Conc: N.D.

Instrument :  
 ECD\_P  
 ClientSampleId :



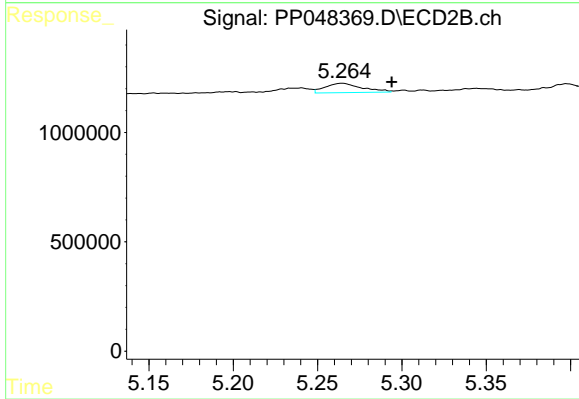
#24 AR-1248-4

R.T.: 4.875 min  
 Delta R.T.: 0.006 min  
 Response: 175026  
 Conc: 3.00 ng/ml



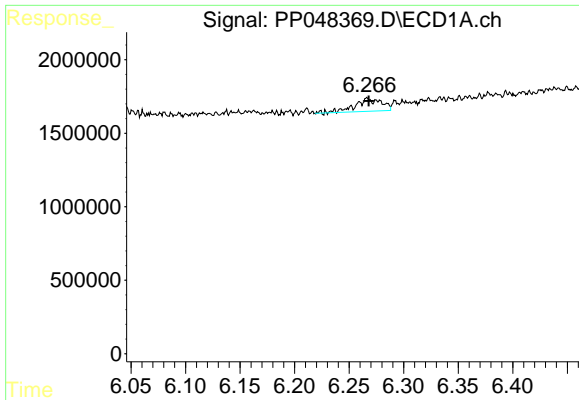
#25 AR-1248-5

R.T.: 0.000 min  
 Exp R.T.: 6.340 min  
 Response: 0  
 Conc: N.D.



#25 AR-1248-5

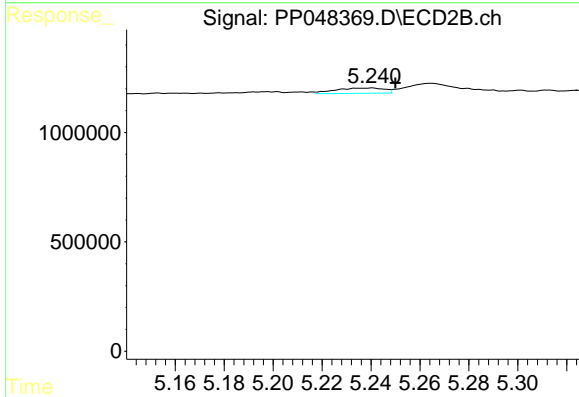
R.T.: 5.265 min  
 Delta R.T.: -0.029 min  
 Response: 659827  
 Conc: 10.94 ng/ml



#26 AR-1254-1

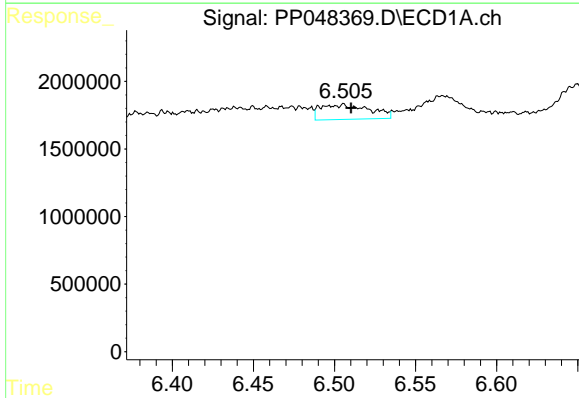
R.T.: 6.267 min  
 Delta R.T.: 0.000 min  
 Response: 1473352  
 Conc: 20.30 ng/ml

Instrument :  
 ECD\_P  
 ClientSampleId :



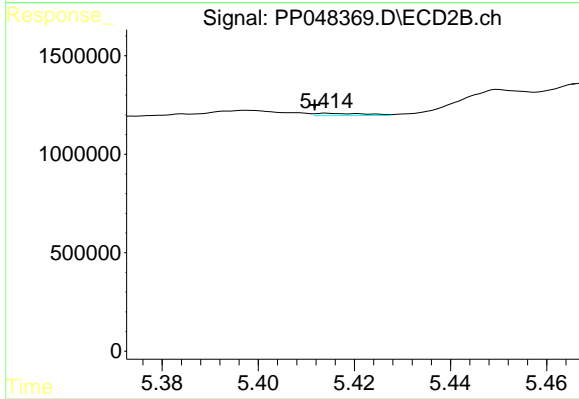
#26 AR-1254-1

R.T.: 5.241 min  
 Delta R.T.: -0.009 min  
 Response: 342473  
 Conc: 3.91 ng/ml



#27 AR-1254-2

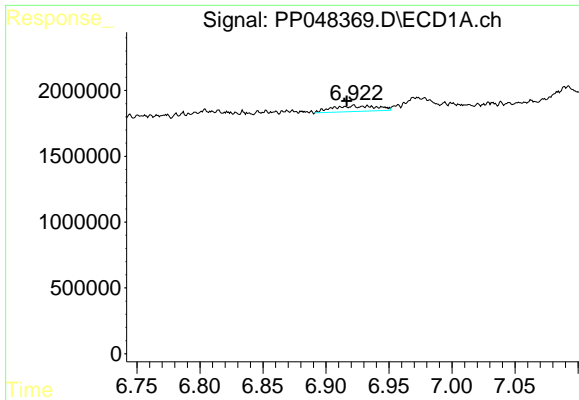
R.T.: 6.504 min  
 Delta R.T.: -0.006 min  
 Response: 2307559  
 Conc: 19.39 ng/ml



#27 AR-1254-2

R.T.: 5.414 min  
 Delta R.T.: 0.002 min  
 Response: 82698  
 Conc: 1.10 ng/ml

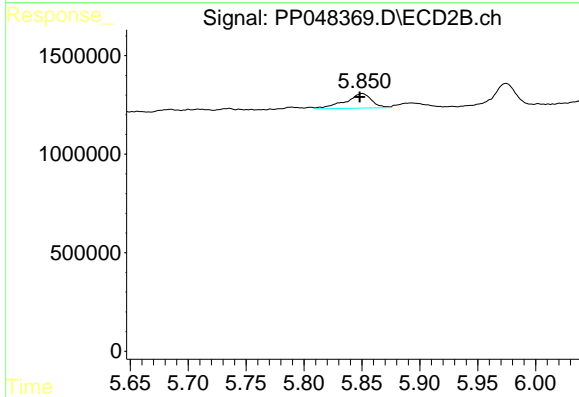




#28 AR-1254-3

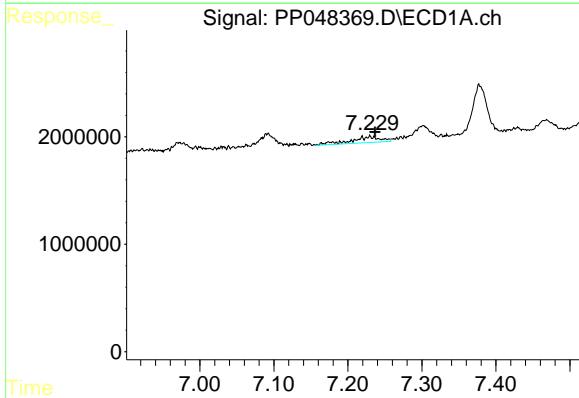
R.T.: 6.922 min  
 Delta R.T.: 0.005 min  
 Response: 1055826  
 Conc: 8.89 ng/ml

Instrument :  
 ECD\_P  
 ClientSampleId :



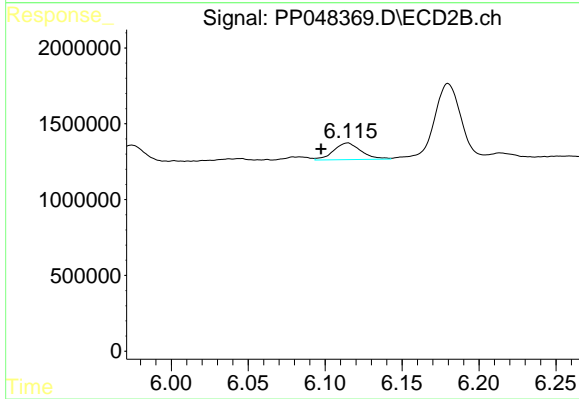
#28 AR-1254-3

R.T.: 5.850 min  
 Delta R.T.: 0.002 min  
 Response: 1177967  
 Conc: 9.60 ng/ml



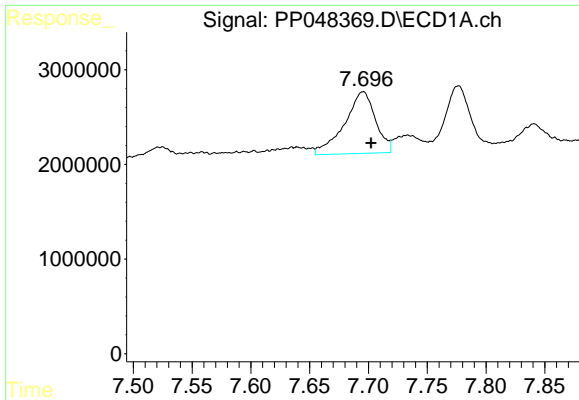
#29 AR-1254-4

R.T.: 7.230 min  
 Delta R.T.: -0.007 min  
 Response: 1584705  
 Conc: 17.57 ng/ml



#29 AR-1254-4

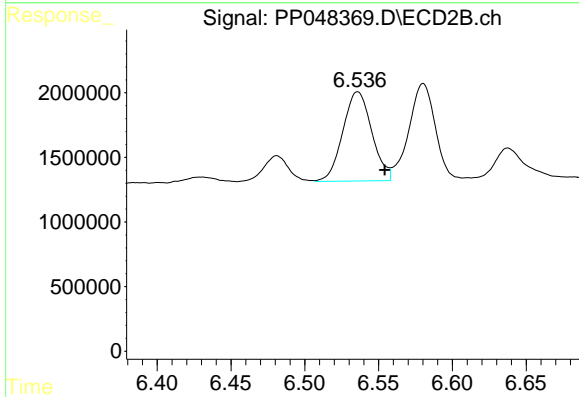
R.T.: 6.115 min  
 Delta R.T.: 0.018 min  
 Response: 1366711  
 Conc: 18.20 ng/ml



#30 AR-1254-5

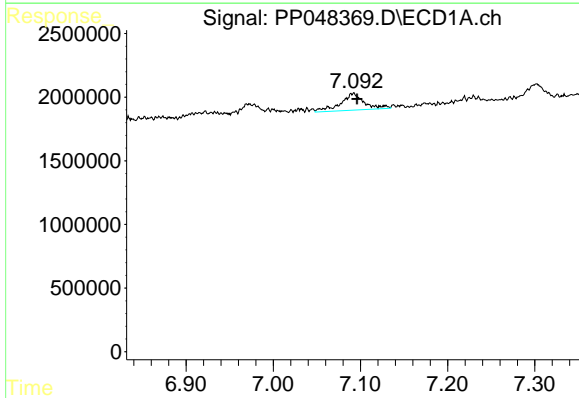
R.T.: 7.695 min  
 Delta R.T.: -0.007 min  
 Response: 11990948  
 Conc: 129.40 ng/ml

Instrument :  
 ECD\_P  
 ClientSampleId :



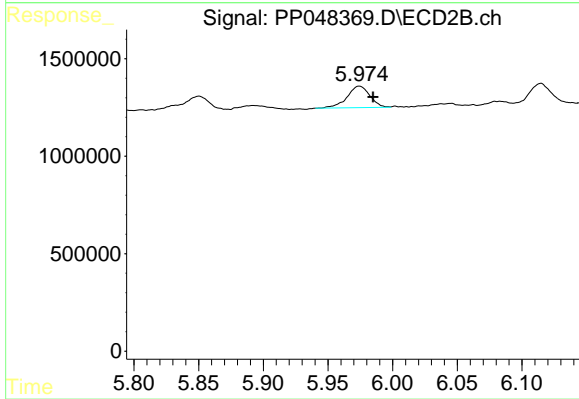
#30 AR-1254-5

R.T.: 6.536 min  
 Delta R.T.: -0.018 min  
 Response: 9450723  
 Conc: 93.35 ng/ml



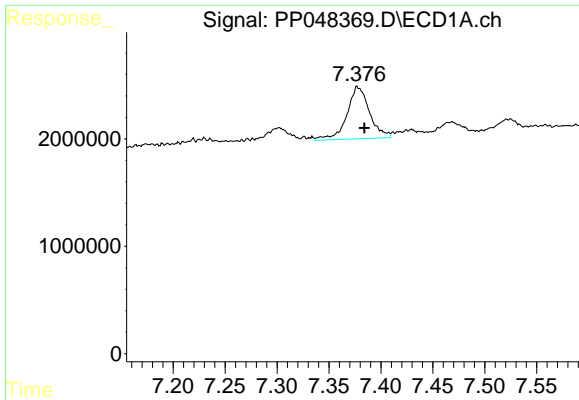
#31 AR-1260-1

R.T.: 7.092 min  
 Delta R.T.: -0.004 min  
 Response: 2489378  
 Conc: 26.67 ng/ml



#31 AR-1260-1

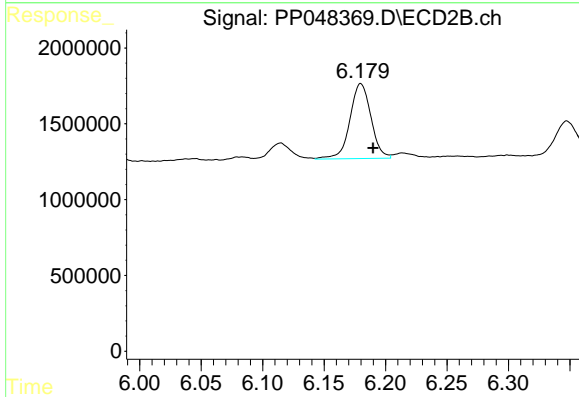
R.T.: 5.974 min  
 Delta R.T.: -0.011 min  
 Response: 1349613  
 Conc: 15.77 ng/ml



#32 AR-1260-2

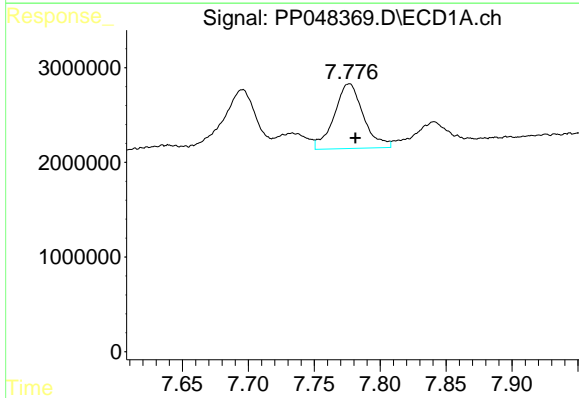
R.T.: 7.378 min  
 Delta R.T.: -0.006 min  
 Response: 7321421  
 Conc: 65.50 ng/ml

Instrument :  
 ECD\_P  
 ClientSampleId :



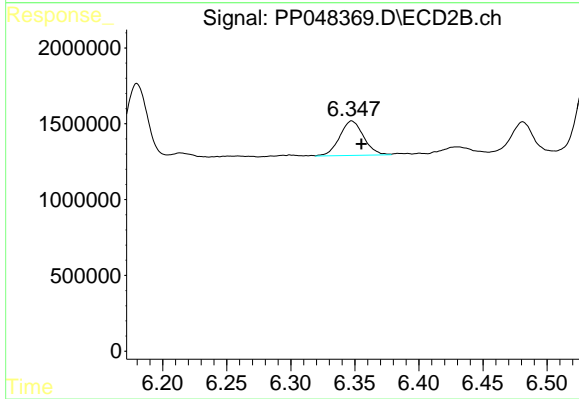
#32 AR-1260-2

R.T.: 6.180 min  
 Delta R.T.: -0.010 min  
 Response: 5910609  
 Conc: 57.34 ng/ml



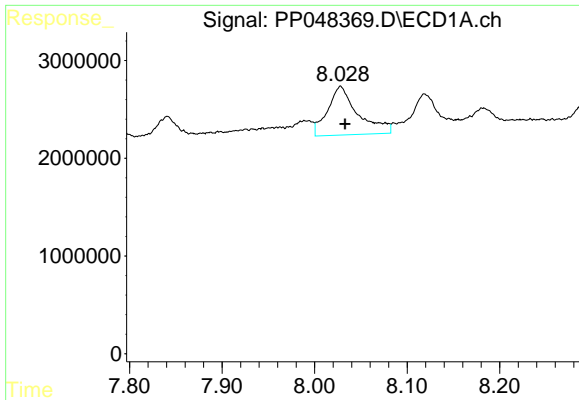
#33 AR-1260-3

R.T.: 7.776 min  
 Delta R.T.: -0.005 min  
 Response: 10539511  
 Conc: 123.04 ng/ml



#33 AR-1260-3

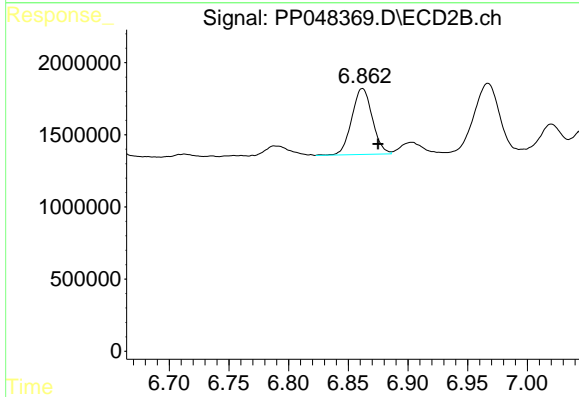
R.T.: 6.348 min  
 Delta R.T.: -0.007 min  
 Response: 2958459  
 Conc: 29.88 ng/ml



#34 AR-1260-4

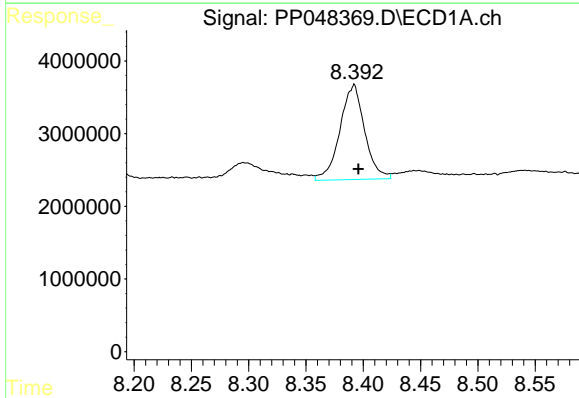
R.T.: 8.028 min  
 Delta R.T.: -0.005 min  
 Response: 11306970  
 Conc: 108.98 ng/ml

Instrument :  
 ECD\_P  
 ClientSampleId :



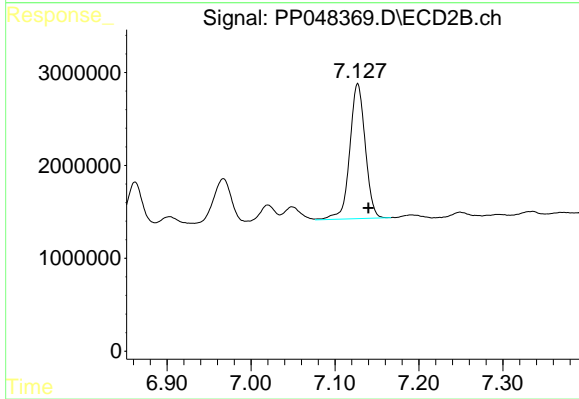
#34 AR-1260-4

R.T.: 6.862 min  
 Delta R.T.: -0.013 min  
 Response: 5463201  
 Conc: 65.62 ng/ml



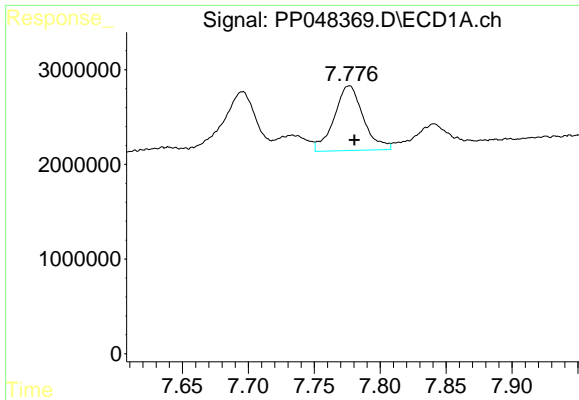
#35 AR-1260-5

R.T.: 8.391 min  
 Delta R.T.: -0.004 min  
 Response: 19551968  
 Conc: 94.75 ng/ml



#35 AR-1260-5

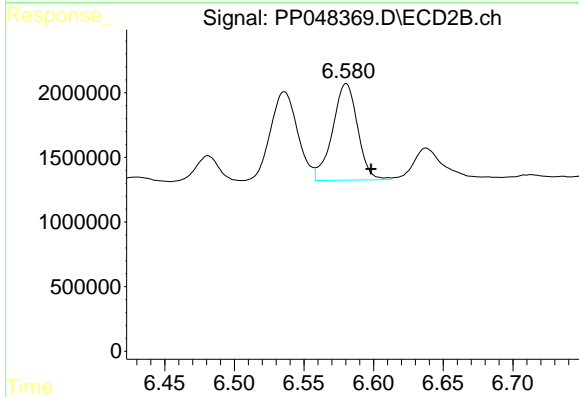
R.T.: 7.127 min  
 Delta R.T.: -0.013 min  
 Response: 18576155  
 Conc: 93.62 ng/ml



#36 AR-1262-1

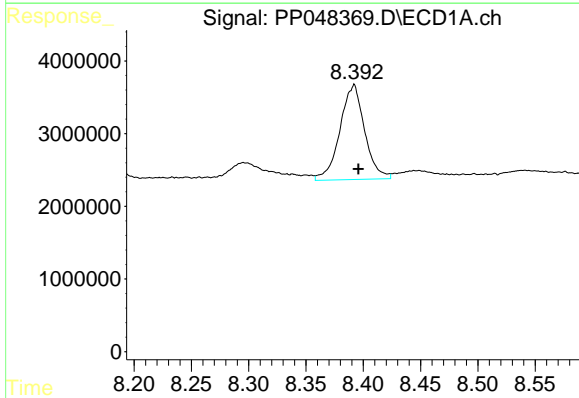
R.T.: 7.776 min  
 Delta R.T.: -0.004 min  
 Response: 10539511  
 Conc: 92.41 ng/ml

Instrument :  
 ECD\_P  
 ClientSampleId :



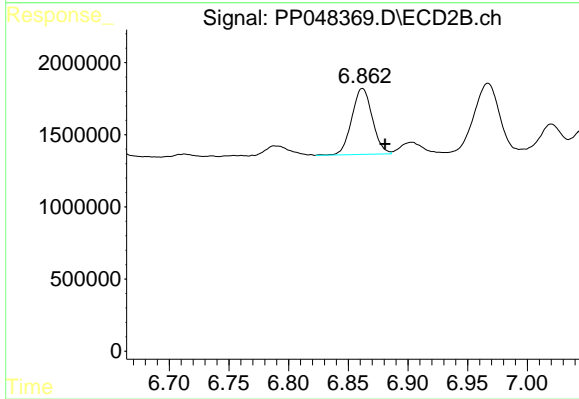
#36 AR-1262-1

R.T.: 6.580 min  
 Delta R.T.: -0.018 min  
 Response: 9377403  
 Conc: 86.79 ng/ml



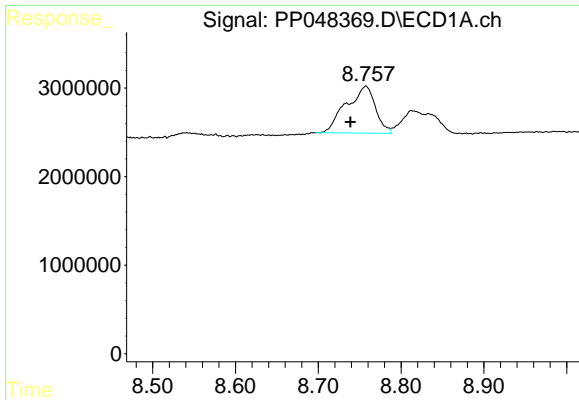
#37 AR-1262-2

R.T.: 8.391 min  
 Delta R.T.: -0.005 min  
 Response: 19551968  
 Conc: 91.73 ng/ml



#37 AR-1262-2

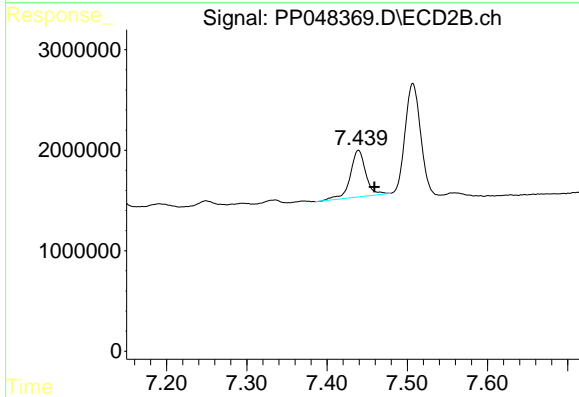
R.T.: 6.862 min  
 Delta R.T.: -0.019 min  
 Response: 5463201  
 Conc: 55.20 ng/ml



#38 AR-1262-3

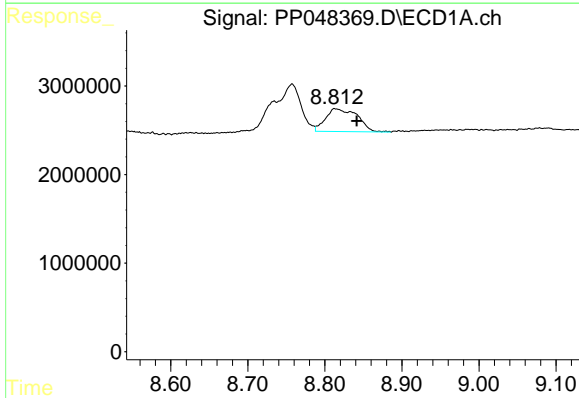
R.T.: 8.757 min  
 Delta R.T.: 0.018 min  
 Response: 12990521  
 Conc: 139.39 ng/ml

Instrument :  
 ECD\_P  
 ClientSampleId :



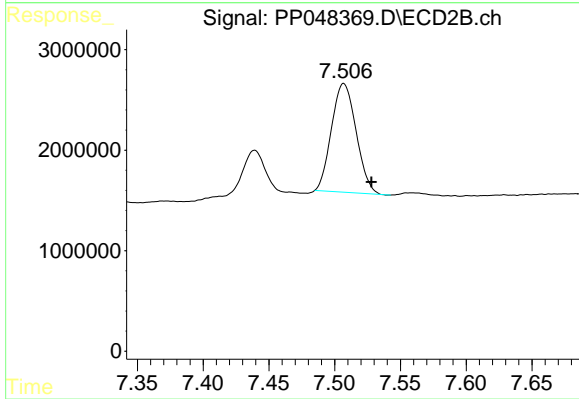
#38 AR-1262-3

R.T.: 7.439 min  
 Delta R.T.: -0.020 min  
 Response: 6165792  
 Conc: 81.93 ng/ml



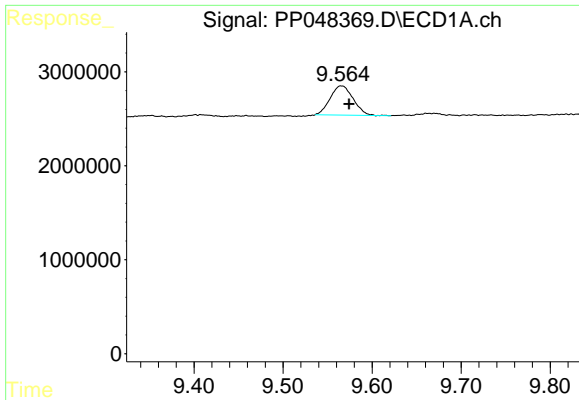
#39 AR-1262-4

R.T.: 8.815 min  
 Delta R.T.: -0.027 min  
 Response: 7440059  
 Conc: 125.13 ng/ml



#39 AR-1262-4

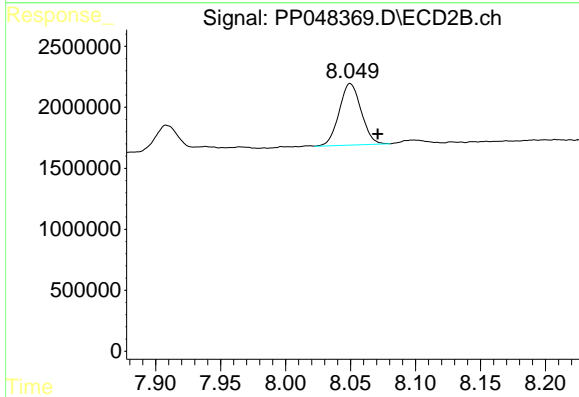
R.T.: 7.507 min  
 Delta R.T.: -0.021 min  
 Response: 14135528  
 Conc: 97.05 ng/ml



#40 AR-1262-5

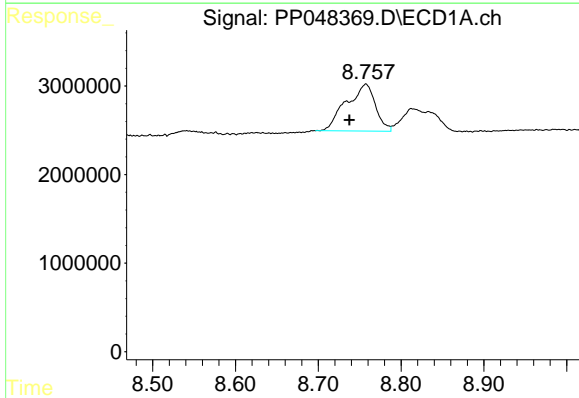
R.T.: 9.566 min  
 Delta R.T.: -0.009 min  
 Response: 5569252  
 Conc: 70.37 ng/ml

Instrument :  
 ECD\_P  
 ClientSampleId :



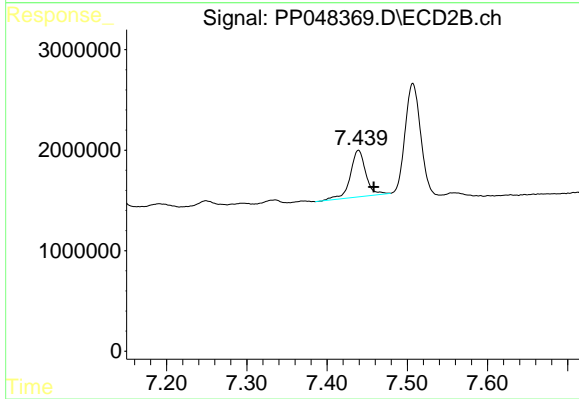
#40 AR-1262-5

R.T.: 8.050 min  
 Delta R.T.: -0.021 min  
 Response: 5958461  
 Conc: 88.28 ng/ml



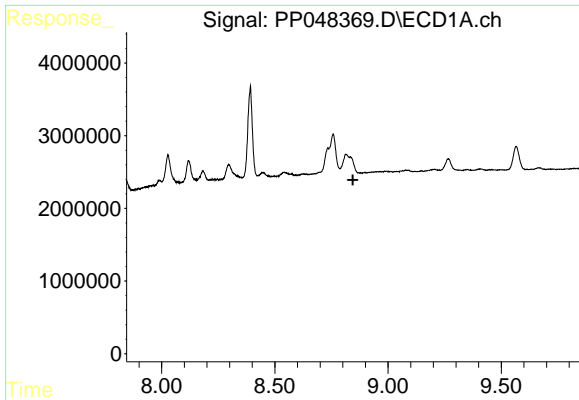
#41 AR-1268-1

R.T.: 8.757 min  
 Delta R.T.: 0.019 min  
 Response: 12990521  
 Conc: 49.11 ng/ml



#41 AR-1268-1

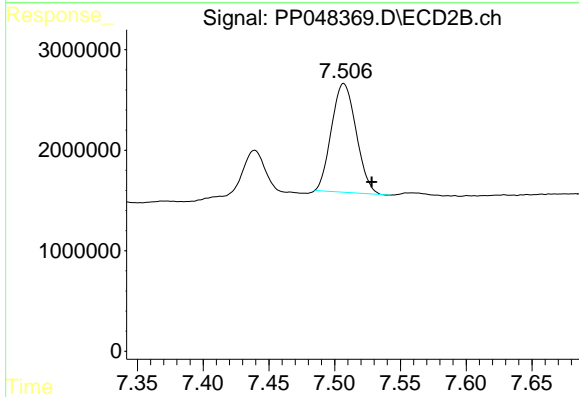
R.T.: 7.439 min  
 Delta R.T.: -0.019 min  
 Response: 6165792  
 Conc: 26.40 ng/ml



#42 AR-1268-2

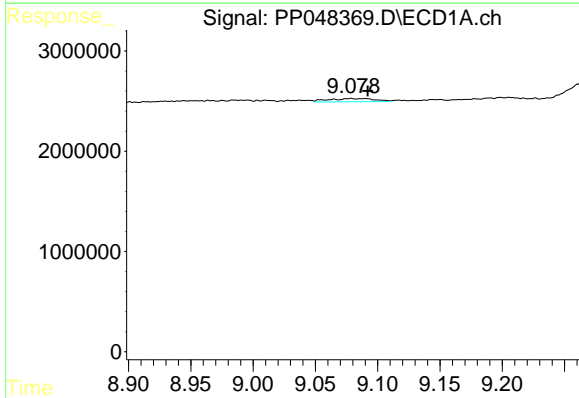
R.T.: 0.000 min  
 Exp R.T.: 8.845 min  
 Response: 0  
 Conc: N.D.

Instrument :  
 ECD\_P  
 ClientSampleId :



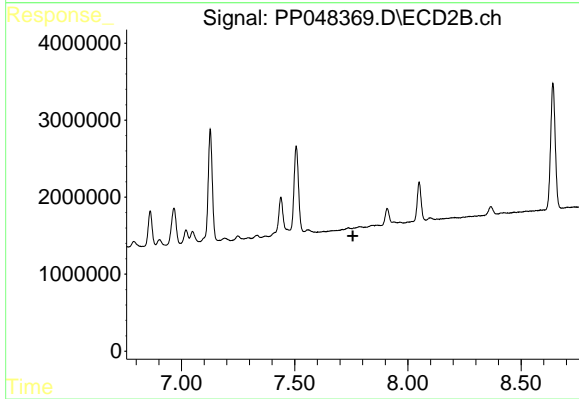
#42 AR-1268-2

R.T.: 7.507 min  
 Delta R.T.: -0.021 min  
 Response: 1413528  
 Conc: 65.33 ng/ml



#43 AR-1268-3

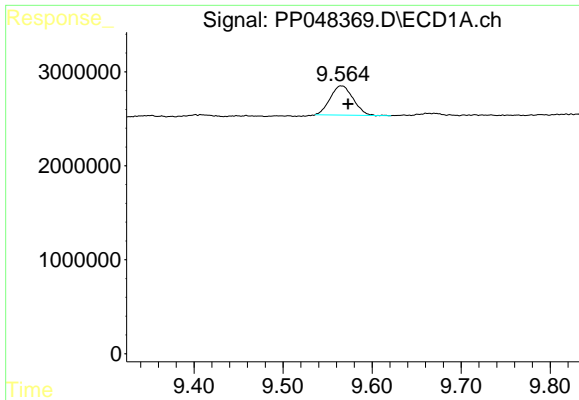
R.T.: 9.079 min  
 Delta R.T.: -0.013 min  
 Response: 810894  
 Conc: 3.94 ng/ml



#43 AR-1268-3

R.T.: 7.736 min  
 Delta R.T.: -0.021 min  
 Response: -350494  
 Conc: N.D.

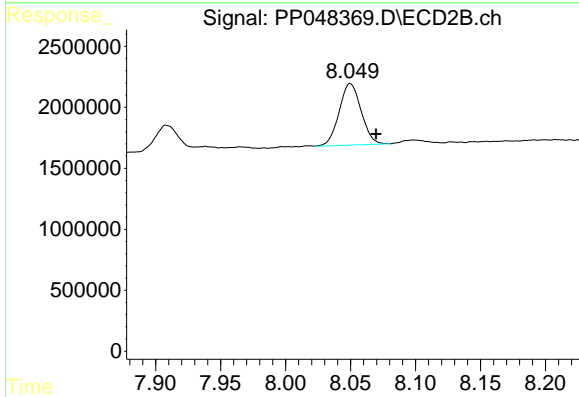




#44 AR-1268-4

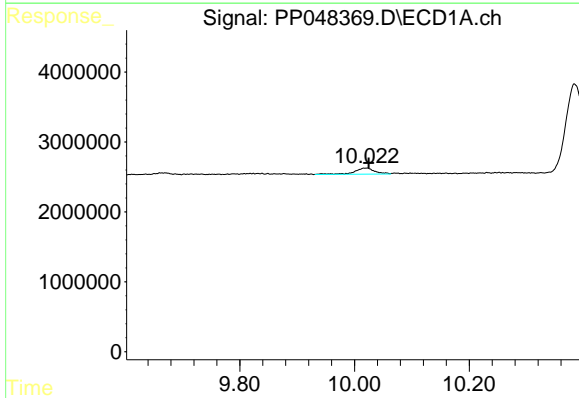
R.T.: 9.566 min  
 Delta R.T.: -0.007 min  
 Response: 5569252  
 Conc: 62.00 ng/ml

Instrument :  
 ECD\_P  
 ClientSampleId :



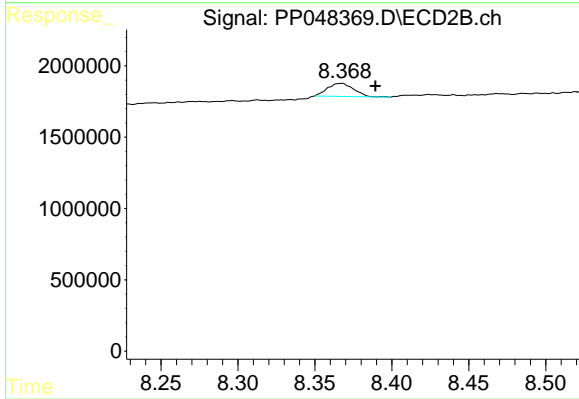
#44 AR-1268-4

R.T.: 8.050 min  
 Delta R.T.: -0.020 min  
 Response: 5958461  
 Conc: 72.53 ng/ml



#45 AR-1268-5

R.T.: 10.019 min  
 Delta R.T.: -0.006 min  
 Response: 2081805  
 Conc: 2.95 ng/ml



#45 AR-1268-5

R.T.: 8.367 min  
 Delta R.T.: -0.022 min  
 Response: 1082200  
 Conc: 1.79 ng/ml