

Data Path : Z:\pestpcbsrv\HPCHEM1\ECD\_P\Data\PP060222\  
 Data File : PP048370.D  
 Signal(s) : Signal #1: ECD1A.ch Signal #2: ECD2B.ch  
 Acq On : 03 Jun 2022 04:44  
 Operator : YP\AJ  
 Sample : N2989-20  
 Misc :  
 ALS Vial : 65 Sample Multiplier: 1

Instrument :  
 ECD\_P  
 ClientSampleId :

Integration File signal 1: autoint1.e  
 Integration File signal 2: autoint2.e  
 Quant Time: Jun 03 06:23:57 2022  
 Quant Method : Z:\pestpcbsrv\HPCHEM1\ECD\_P\methods\PP052722.M  
 Quant Title : GC EXTRACTABLES  
 QLast Update : Fri May 27 23:53:39 2022  
 Response via : Initial Calibration  
 Integrator: ChemStation

Volume Inj. : 2 µl  
 Signal #1 Phase : ZB-MR1 Signal #2 Phase: ZB-MR2  
 Signal #1 Info : 30Mx0.32mmx 0.50µ Signal #2 Info : 30M x 0.32mm x 0.25µm

Compound	RT#1	RT#2	Resp#1	Resp#2	ng/ml	ng/ml
-----						
System Monitoring Compounds						
1) SA Tetrachlo...	4.033	3.214	55805561	44768008	23.831	22.716
2) SA Decachlor...	10.384	8.640	48505916	28037172	24.957	17.345 #
Target Compounds						
3) L1 AR-1016-1	5.322	4.393	3455875	1999892	40.981	29.735 #
4) L1 AR-1016-2	5.354	4.393	8277605	1999892	69.962	21.474 #
5) L1 AR-1016-3	5.423	0.000	7794334	0	115.342	N.D. #
6) L1 AR-1016-4	5.521	4.628f	1029745	111.5E6	16.706	2926.594 #
7) L1 AR-1016-5	5.845	4.862	9038328	12166144	160.456	254.812 #
8) L2 AR-1221-1	4.270	3.438f	2798256	461776	105.849	22.279 #
9) L2 AR-1221-2	4.367	0.000	652463	0	31.857	N.D. #
10) L2 AR-1221-3	4.461	3.616	1215258	824729	19.411	16.629
11) L3 AR-1232-1	4.461	3.616	1215258	824729	23.397	19.095
12) L3 AR-1232-2	5.024	4.393	2006989	1999892	83.597	49.637 #
13) L3 AR-1232-3	5.354	0.000	8277605	0	166.813	N.D. #
14) L3 AR-1232-4	5.521	4.670f	1029745	99348749	43.077	5724.731 #
15) L3 AR-1232-5	5.621	4.862	132.4E6	12166144	8107.140	621.111 #
16) L4 AR-1242-1	5.322	4.393	3455875	1999892	61.799	41.938 #
17) L4 AR-1242-2	5.354	4.393	8277605	1999892	100.646	30.098 #
18) L4 AR-1242-3	5.423	0.000	7794334	0	158.778	N.D. #
19) L4 AR-1242-4	5.521	4.670f	1029745	99348749	26.022	3093.172 #
20) L4 AR-1242-5	6.339	5.235f	277.9E6	457.4E6	6525.502	10951.965 #
21) L5 AR-1248-1	5.322	4.393	3455875	1999892	80.119	54.642 #
22) L5 AR-1248-2	5.621	4.628	132.4E6	111.5E6	2315.996	2341.404
23) L5 AR-1248-3	5.845	4.670f	9038328	99348749	133.536	2005.400 #
24) L5 AR-1248-4	6.293	4.862	44669769	12166144	574.393	208.828 #
25) L5 AR-1248-5	6.339	5.279f	277.9E6	56661983	3653.592	939.413 #
26) L6 AR-1254-1	6.261	5.235f	478.0E6	457.4E6	6584.954	5217.374
27) L6 AR-1254-2	6.502	5.397	1262.4E6	1119.7E6	10609.146	14902.601 #
28) L6 AR-1254-3	6.912	5.850	493.6E6	1774.3E6	4155.377	14461.162 #
29) L6 AR-1254-4	7.228	6.080f	586.5E6	291.0E6	6501.840	3874.977 #
30) L6 AR-1254-5	7.694	6.534f	3753.2E6	2941.0E6	40503.515	29050.328 #
31) L7 AR-1260-1	7.091	5.974	3354.7E6	2757.1E6	35941.882	32207.612
32) L7 AR-1260-2	7.379	6.180	4318.0E6	3704.5E6	38627.604	35938.954
33) L7 AR-1260-3	7.776	6.347	3025.6E6	1947.7E6	35322.777	19669.696 #
34) L7 AR-1260-4	8.029	6.862	2351.2E6	1807.8E6	22660.388	21714.577
35) L7 AR-1260-5	8.391	7.128	4557.6E6	4154.4E6	22085.885	20938.354
36) L8 AR-1262-1	7.776	6.580f	3025.6E6	2787.0E6	26529.107	25795.011
37) L8 AR-1262-2	8.391	6.862f	4557.6E6	1807.8E6	21382.109	18266.733
38) L8 AR-1262-3	8.758f	7.439f	3235.8E6	1069.9E6	34721.243	14216.473 #
39) L8 AR-1262-4	8.816f	7.507f	1929.0E6	3143.7E6	32442.652	21584.357 #
40) L8 AR-1262-5	9.567	8.050f	1451.6E6	1336.6E6	18340.179	19803.445
41) L9 AR-1268-1	8.758f	7.439f	3235.8E6	1069.9E6	12232.055	4580.907 #

Data Path : Z:\pestpcbsrv\HPCHEM1\ECD\_P\Data\PP060222\  
 Data File : PP048370.D  
 Signal(s) : Signal #1: ECD1A.ch Signal #2: ECD2B.ch  
 Acq On : 03 Jun 2022 04:44  
 Operator : YP\AJ  
 Sample : N2989-20  
 Misc :  
 ALS Vial : 65 Sample Multiplier: 1

Instrument :  
 ECD\_P  
 ClientSampleId :

Integration File signal 1: autoint1.e  
 Integration File signal 2: autoint2.e  
 Quant Time: Jun 03 06:23:57 2022  
 Quant Method : Z:\pestpcbsrv\HPCHEM1\ECD\_P\methods\PP052722.M  
 Quant Title : GC EXTRACTABLES  
 QLast Update : Fri May 27 23:53:39 2022  
 Response via : Initial Calibration  
 Integrator: ChemStation

Volume Inj. : 2 µl  
 Signal #1 Phase : ZB-MR1 Signal #2 Phase: ZB-MR2  
 Signal #1 Info : 30Mx0.32mmx 0.50µ Signal #2 Info : 30M x 0.32mm x 0.25µm

	Compound	RT#1	RT#2	Resp#1	Resp#2	ng/ml	ng/ml
42)	L9 AR-1268-2	8.816f	7.507f	1929.0E6	3143.7E6	7987.679	14529.563 #
43)	L9 AR-1268-3	9.084	7.736f	71708099	45759765	348.802	246.184 #
44)	L9 AR-1268-4	9.567	8.050f	1451.6E6	1336.6E6	16159.286	16270.118
45)	L9 AR-1268-5	10.018	8.365f	369.2E6	213.0E6	522.966	351.512 #

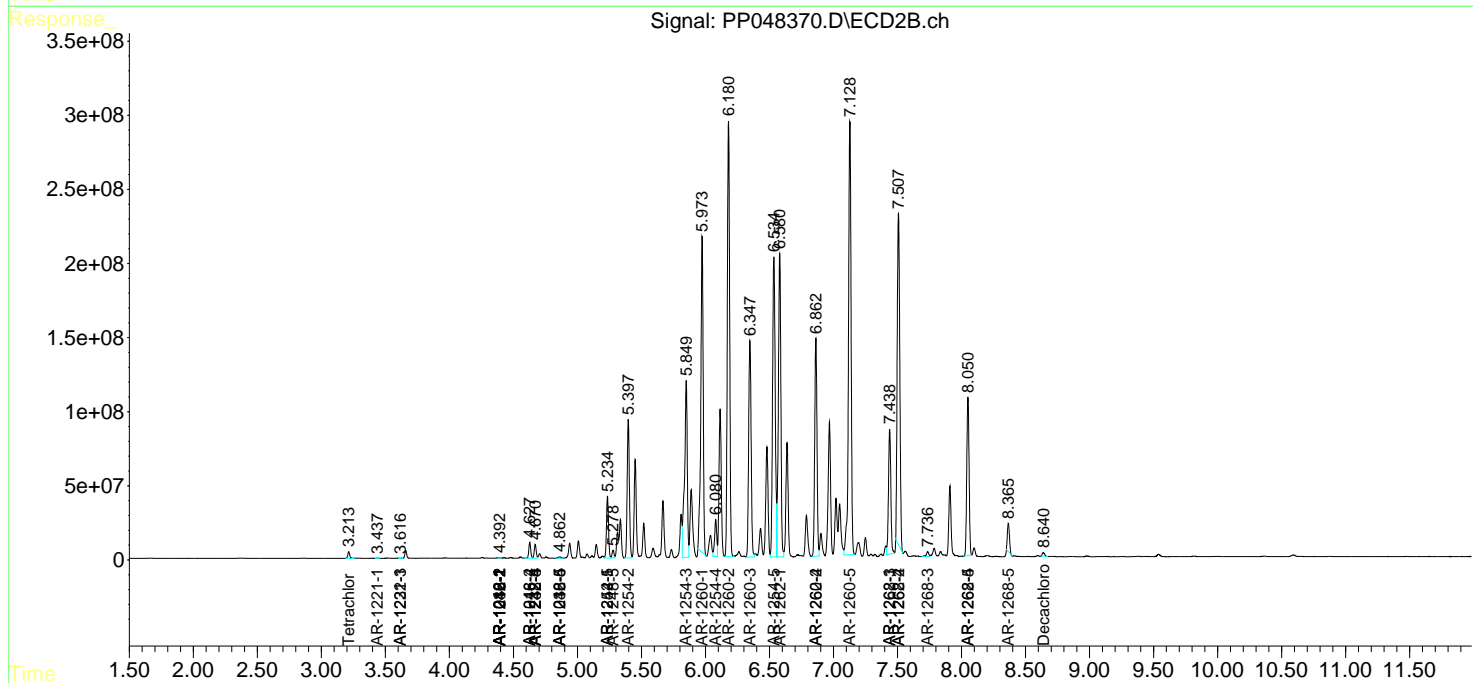
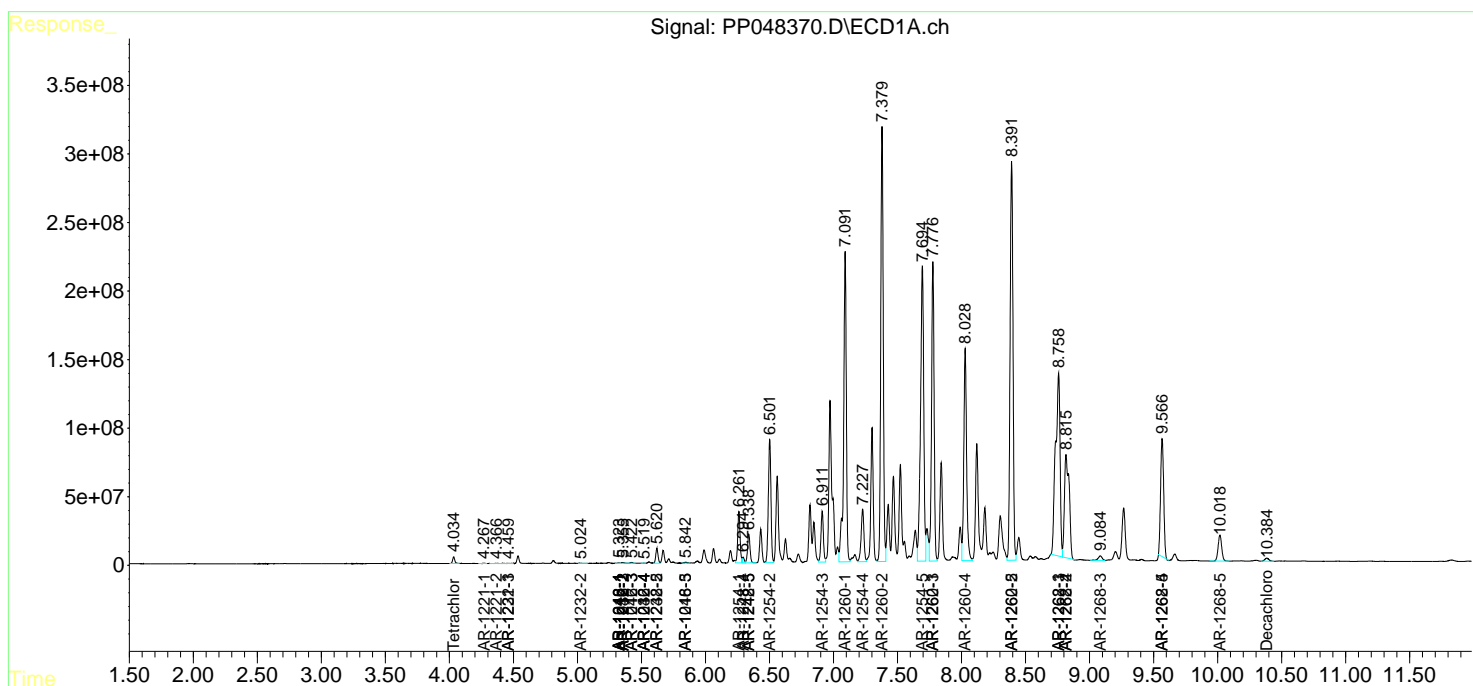
(f)=RT Delta > 1/2 Window (#)=Amounts differ by > 25% (m)=manual int.

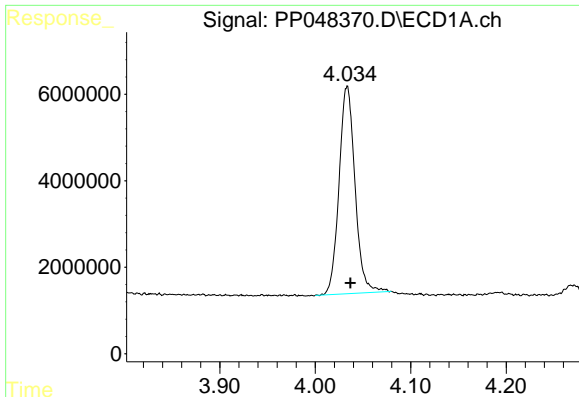
Data Path : Z:\pestpcbsrv\HPCHEM1\ECD\_P\Data\PP060222\  
 Data File : PP048370.D  
 Signal(s) : Signal #1: ECD1A.ch Signal #2: ECD2B.ch  
 Acq On : 03 Jun 2022 04:44  
 Operator : YP\AJ  
 Sample : N2989-20  
 Misc :  
 ALS Vial : 65 Sample Multiplier: 1

Instrument :  
 ECD\_P  
 ClientSampleId :

Integration File signal 1: autoint1.e  
 Integration File signal 2: autoint2.e  
 Quant Time: Jun 03 06:23:57 2022  
 Quant Method : Z:\pestpcbsrv\HPCHEM1\ECD\_P\methods\PP052722.M  
 Quant Title : GC EXTRACTABLES  
 QLast Update : Fri May 27 23:53:39 2022  
 Response via : Initial Calibration  
 Integrator: ChemStation

Volume Inj. : 2 µl  
 Signal #1 Phase : ZB-MR1 Signal #2 Phase: ZB-MR2  
 Signal #1 Info : 30Mx0.32mmx 0.50µ Signal #2 Info : 30M x 0.32mm x 0.25µm

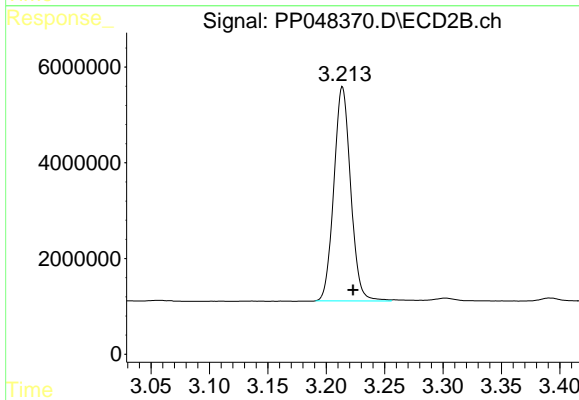




#1 Tetrachloro-m-xylene

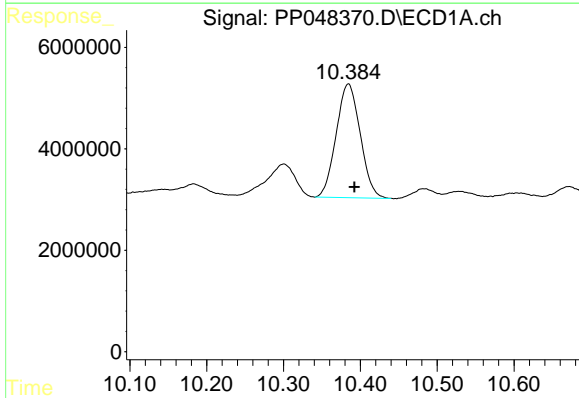
R.T.: 4.033 min  
 Delta R.T.: -0.004 min  
 Response: 55805561  
 Conc: 23.83 ng/ml

Instrument :  
 ECD\_P  
 ClientSampleId :



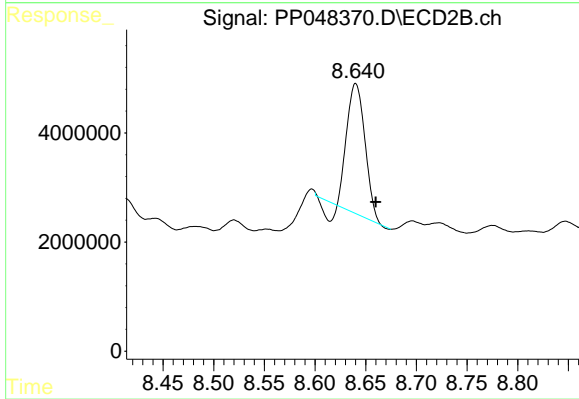
#1 Tetrachloro-m-xylene

R.T.: 3.214 min  
 Delta R.T.: -0.009 min  
 Response: 44768008  
 Conc: 22.72 ng/ml



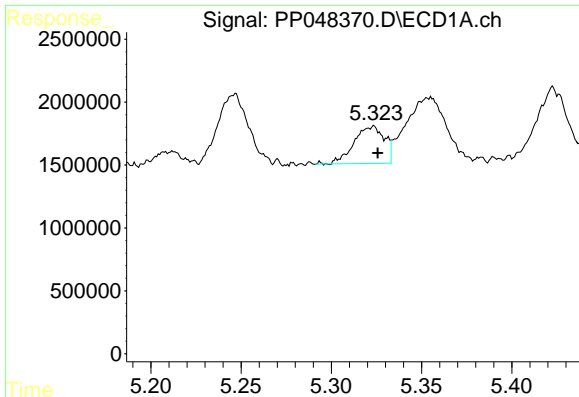
#2 Decachlorobiphenyl

R.T.: 10.384 min  
 Delta R.T.: -0.008 min  
 Response: 48505916  
 Conc: 24.96 ng/ml



#2 Decachlorobiphenyl

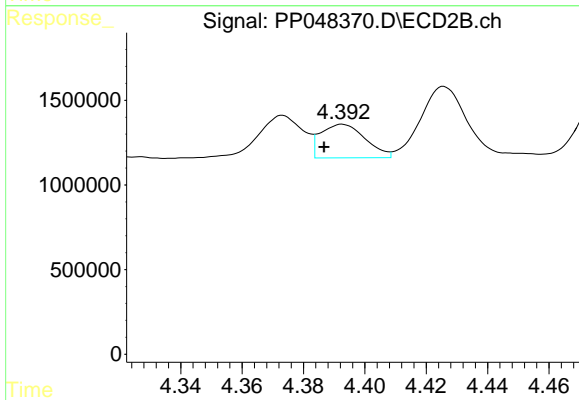
R.T.: 8.640 min  
 Delta R.T.: -0.020 min  
 Response: 28037172  
 Conc: 17.34 ng/ml



#3 AR-1016-1

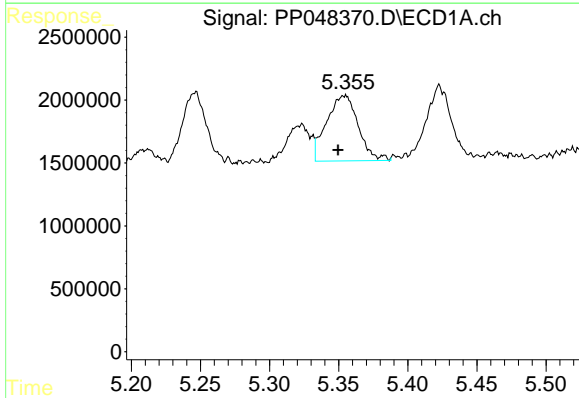
R.T.: 5.322 min  
 Delta R.T.: -0.004 min  
 Response: 3455875  
 Conc: 40.98 ng/ml

Instrument :  
 ECD\_P  
 ClientSampleId :



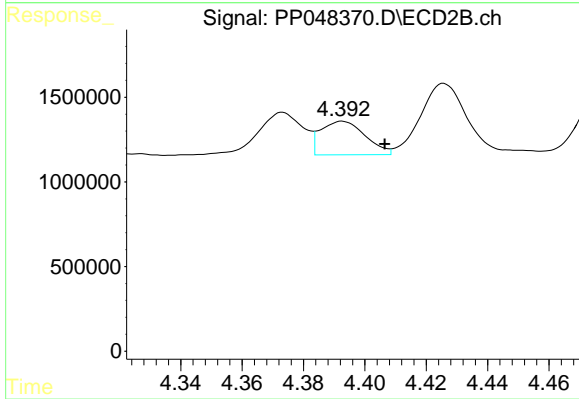
#3 AR-1016-1

R.T.: 4.393 min  
 Delta R.T.: 0.006 min  
 Response: 1999892  
 Conc: 29.73 ng/ml



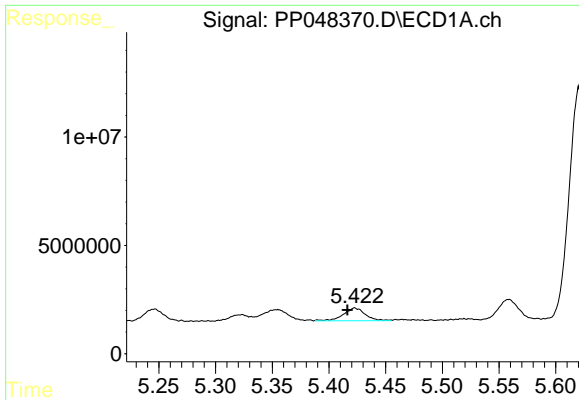
#4 AR-1016-2

R.T.: 5.354 min  
 Delta R.T.: 0.004 min  
 Response: 8277605  
 Conc: 69.96 ng/ml



#4 AR-1016-2

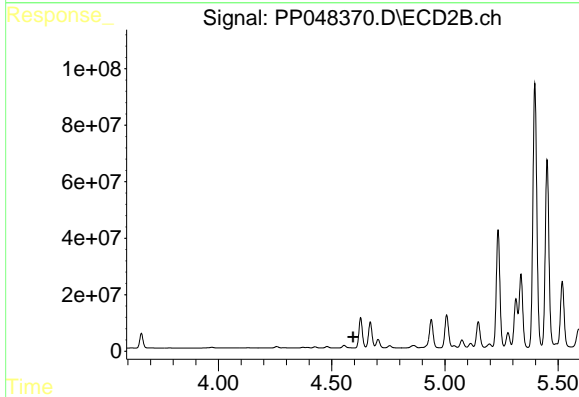
R.T.: 4.393 min  
 Delta R.T.: -0.014 min  
 Response: 1999892  
 Conc: 21.47 ng/ml



#5 AR-1016-3

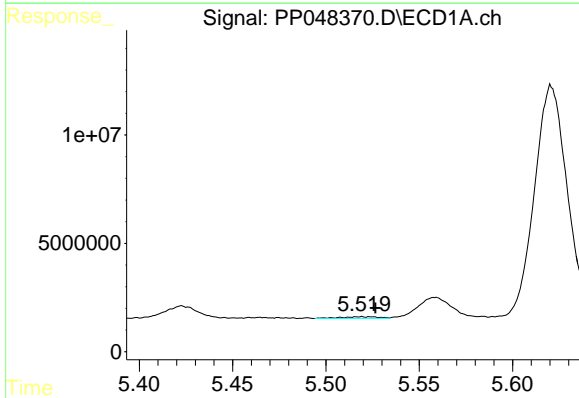
R.T.: 5.423 min  
 Delta R.T.: 0.007 min  
 Response: 7794334  
 Conc: 115.34 ng/ml

Instrument :  
 ECD\_P  
 ClientSampleId :



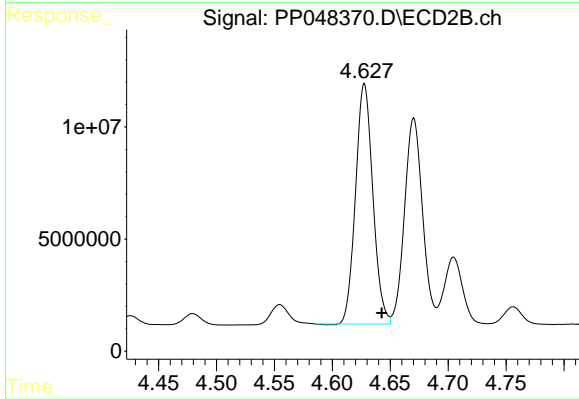
#5 AR-1016-3

R.T.: 0.000 min  
 Exp R.T. : 4.594 min  
 Response: 0  
 Conc: N.D.



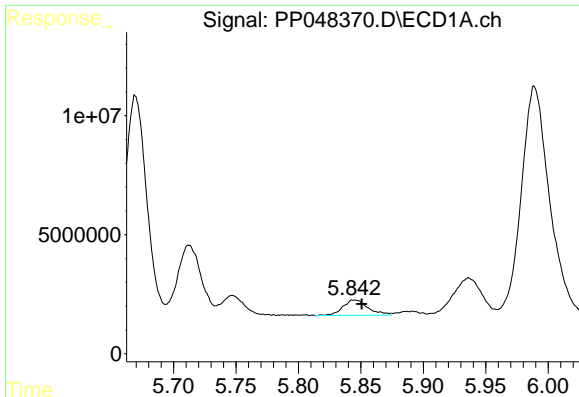
#6 AR-1016-4

R.T.: 5.521 min  
 Delta R.T.: -0.005 min  
 Response: 1029745  
 Conc: 16.71 ng/ml



#6 AR-1016-4

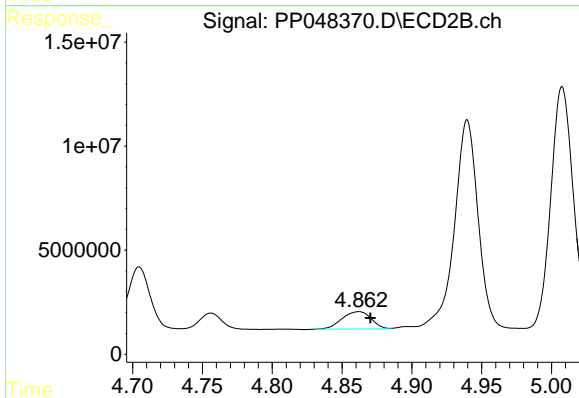
R.T.: 4.628 min  
 Delta R.T.: -0.015 min  
 Response: 111505680  
 Conc: 2926.59 ng/ml



#7 AR-1016-5

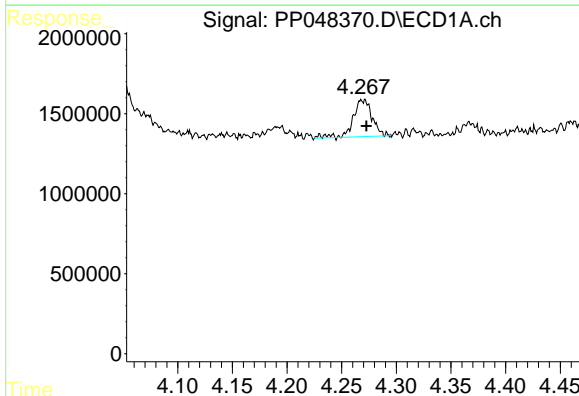
R.T.: 5.845 min  
 Delta R.T.: -0.005 min  
 Response: 9038328  
 Conc: 160.46 ng/ml

Instrument :  
 ECD\_P  
 ClientSampleId :



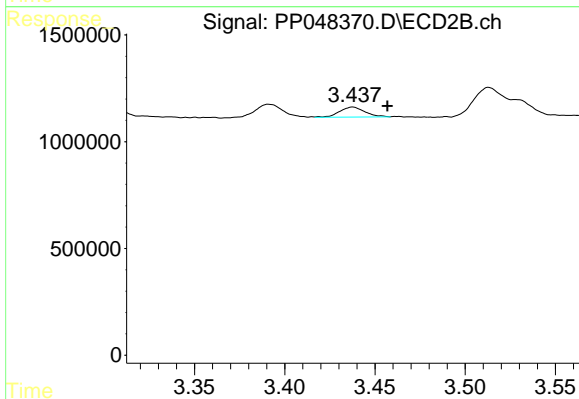
#7 AR-1016-5

R.T.: 4.862 min  
 Delta R.T.: -0.008 min  
 Response: 12166144  
 Conc: 254.81 ng/ml



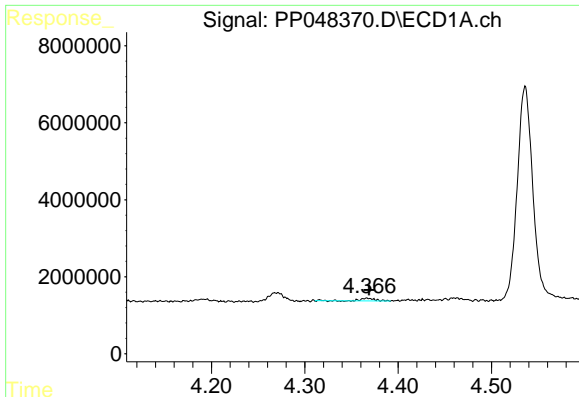
#8 AR-1221-1

R.T.: 4.270 min  
 Delta R.T.: -0.003 min  
 Response: 2798256  
 Conc: 105.85 ng/ml



#8 AR-1221-1

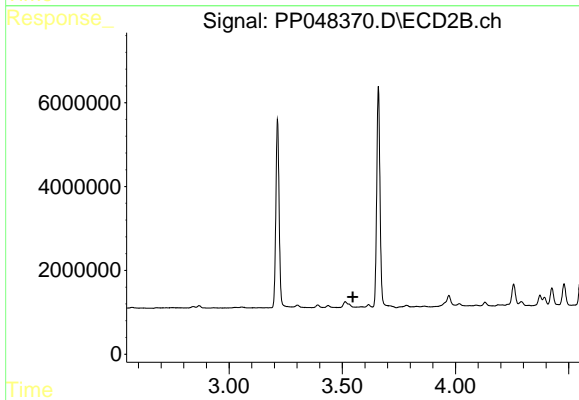
R.T.: 3.438 min  
 Delta R.T.: -0.019 min  
 Response: 461776  
 Conc: 22.28 ng/ml



#9 AR-1221-2

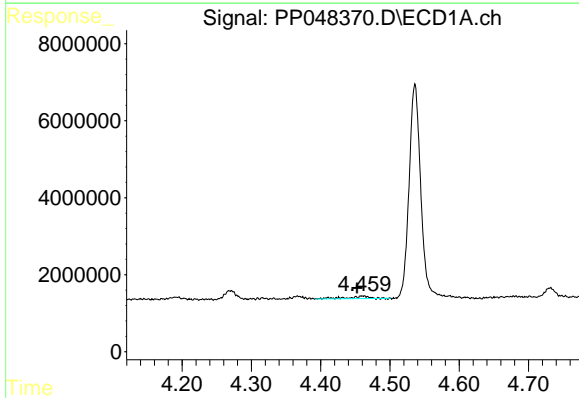
R.T.: 4.367 min  
 Delta R.T.: -0.002 min  
 Response: 652463  
 Conc: 31.86 ng/ml

Instrument :  
 ECD\_P  
 ClientSampleId :



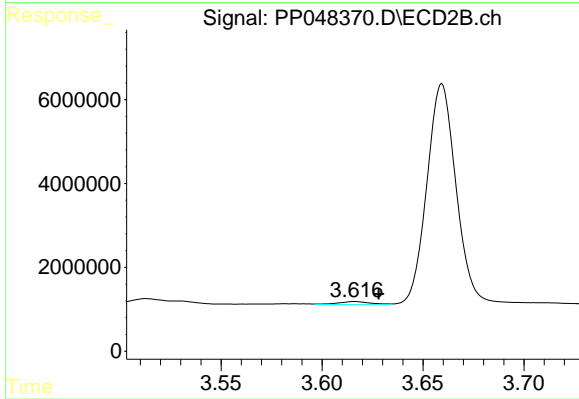
#9 AR-1221-2

R.T.: 0.000 min  
 Exp R.T. : 3.547 min  
 Response: 0  
 Conc: N.D.



#10 AR-1221-3

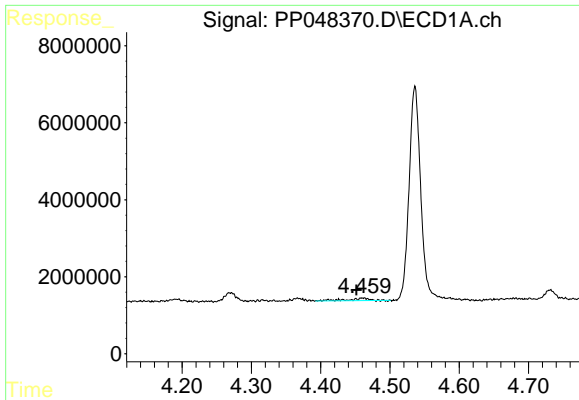
R.T.: 4.461 min  
 Delta R.T.: 0.009 min  
 Response: 1215258  
 Conc: 19.41 ng/ml



#10 AR-1221-3

R.T.: 3.616 min  
 Delta R.T.: -0.012 min  
 Response: 824729  
 Conc: 16.63 ng/ml

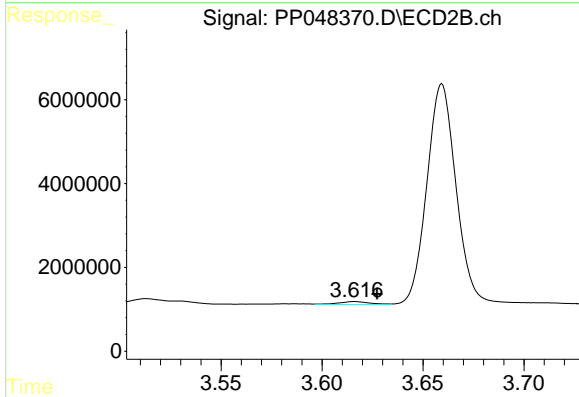




#11 AR-1232-1

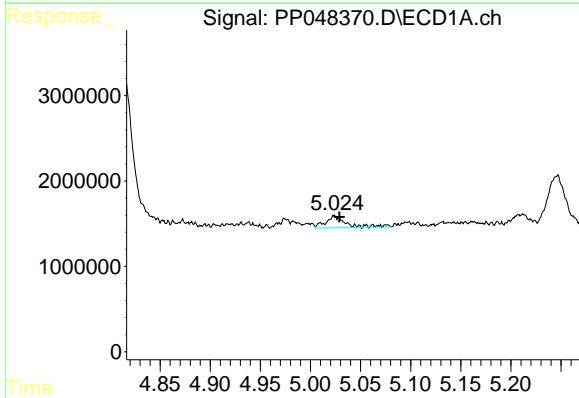
R.T.: 4.461 min  
 Delta R.T.: 0.010 min  
 Response: 1215258  
 Conc: 23.40 ng/ml

Instrument :  
 ECD\_P  
 ClientSampleId :



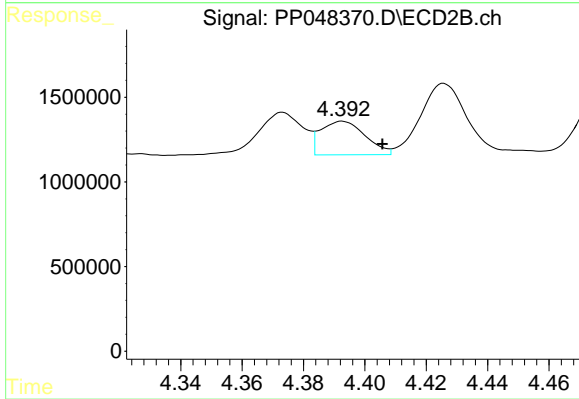
#11 AR-1232-1

R.T.: 3.616 min  
 Delta R.T.: -0.011 min  
 Response: 824729  
 Conc: 19.09 ng/ml



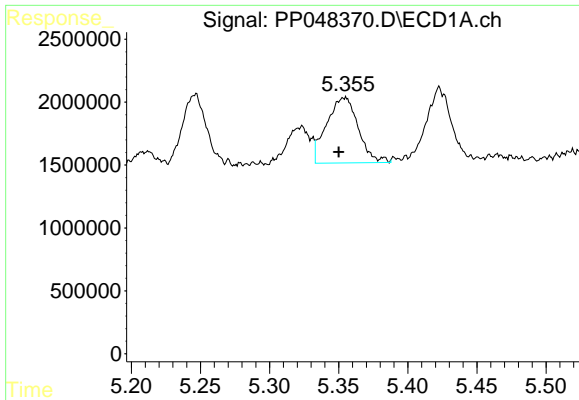
#12 AR-1232-2

R.T.: 5.024 min  
 Delta R.T.: -0.004 min  
 Response: 2006989  
 Conc: 83.60 ng/ml



#12 AR-1232-2

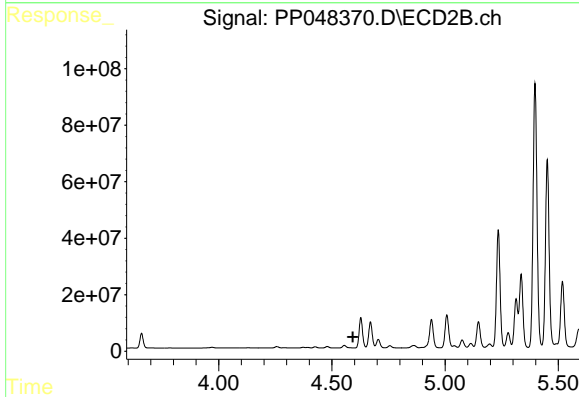
R.T.: 4.393 min  
 Delta R.T.: -0.013 min  
 Response: 1999892  
 Conc: 49.64 ng/ml



#13 AR-1232-3

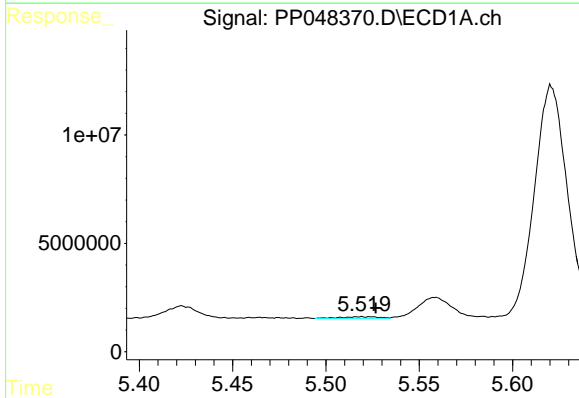
R.T.: 5.354 min  
 Delta R.T.: 0.004 min  
 Response: 8277605  
 Conc: 166.81 ng/ml

Instrument :  
 ECD\_P  
 ClientSampleId :



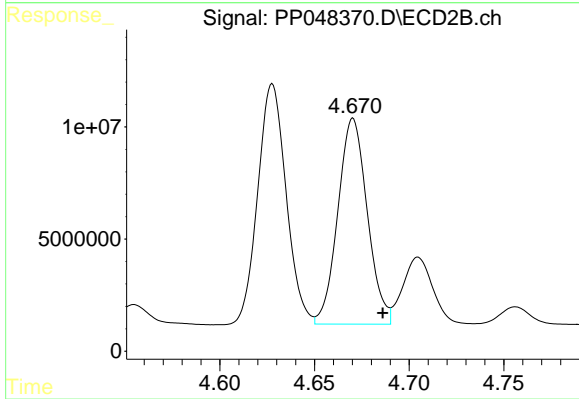
#13 AR-1232-3

R.T.: 0.000 min  
 Exp R.T. : 4.593 min  
 Response: 0  
 Conc: N.D.



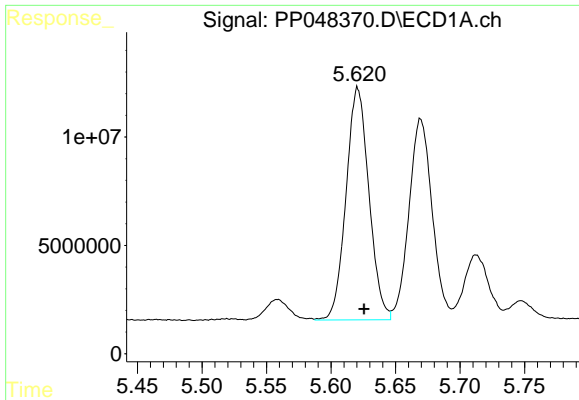
#14 AR-1232-4

R.T.: 5.521 min  
 Delta R.T.: -0.005 min  
 Response: 1029745  
 Conc: 43.08 ng/ml



#14 AR-1232-4

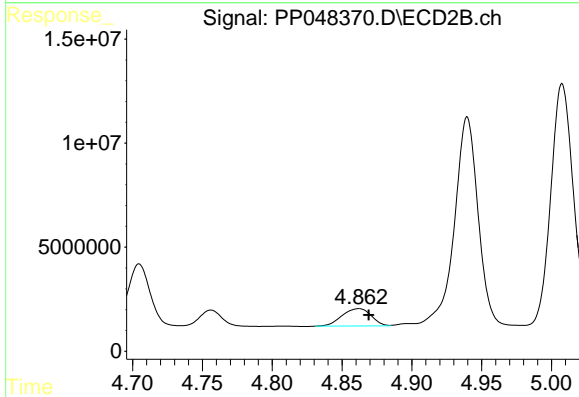
R.T.: 4.670 min  
 Delta R.T.: -0.016 min  
 Response: 99348749  
 Conc: 5724.73 ng/ml



#15 AR-1232-5

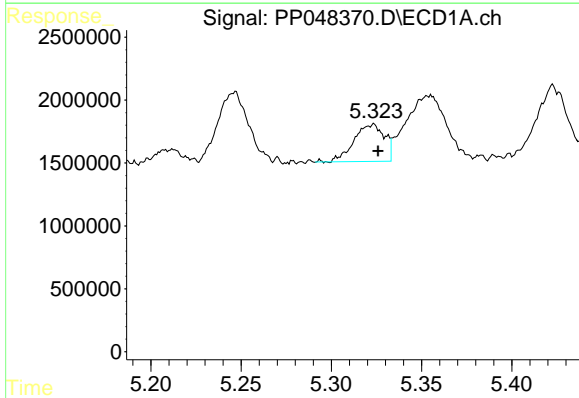
R.T.: 5.621 min  
 Delta R.T.: -0.005 min  
 Response: 132448992  
 Conc: 8107.14 ng/ml

Instrument :  
 ECD\_P  
 ClientSampleId :



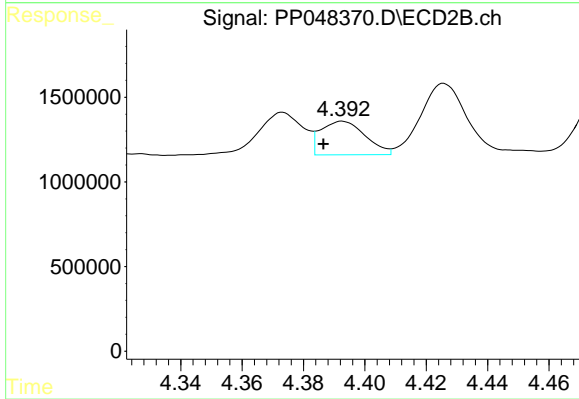
#15 AR-1232-5

R.T.: 4.862 min  
 Delta R.T.: -0.007 min  
 Response: 12166144  
 Conc: 621.11 ng/ml



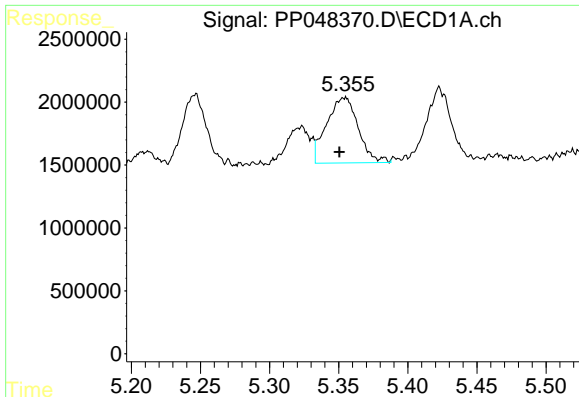
#16 AR-1242-1

R.T.: 5.322 min  
 Delta R.T.: -0.004 min  
 Response: 3455875  
 Conc: 61.80 ng/ml



#16 AR-1242-1

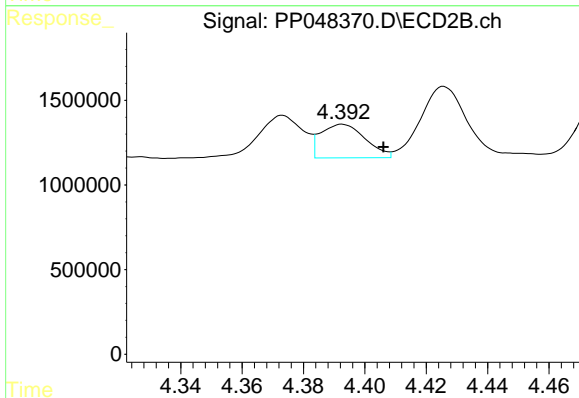
R.T.: 4.393 min  
 Delta R.T.: 0.006 min  
 Response: 1999892  
 Conc: 41.94 ng/ml



#17 AR-1242-2

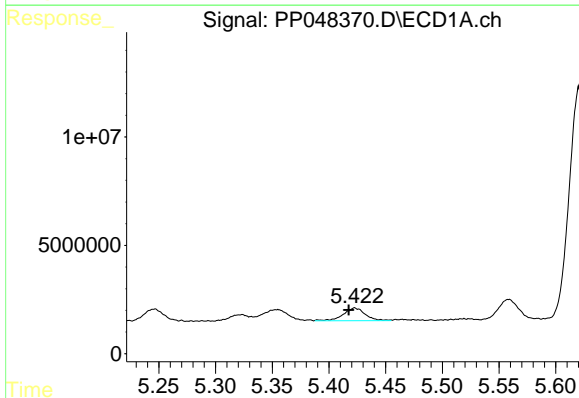
R.T.: 5.354 min  
 Delta R.T.: 0.003 min  
 Response: 8277605  
 Conc: 100.65 ng/ml

Instrument :  
 ECD\_P  
 ClientSampleId :



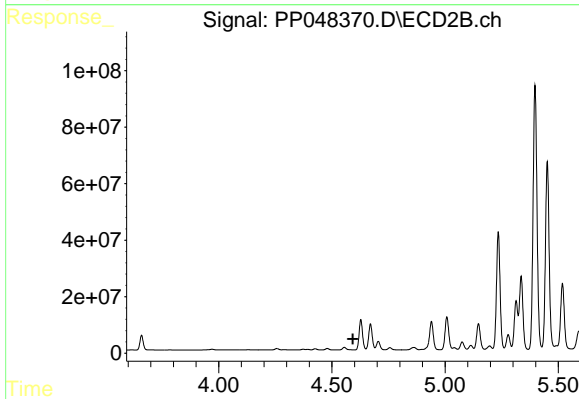
#17 AR-1242-2

R.T.: 4.393 min  
 Delta R.T.: -0.013 min  
 Response: 1999892  
 Conc: 30.10 ng/ml



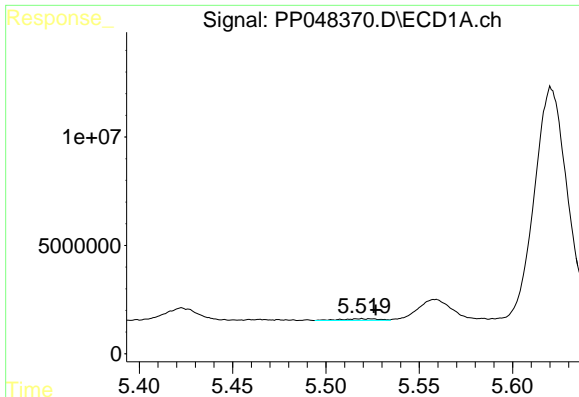
#18 AR-1242-3

R.T.: 5.423 min  
 Delta R.T.: 0.006 min  
 Response: 7794334  
 Conc: 158.78 ng/ml



#18 AR-1242-3

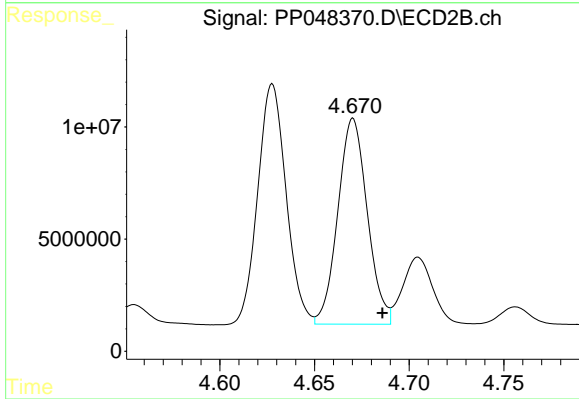
R.T.: 0.000 min  
 Exp R.T.: 4.593 min  
 Response: 0  
 Conc: N.D.



#19 AR-1242-4

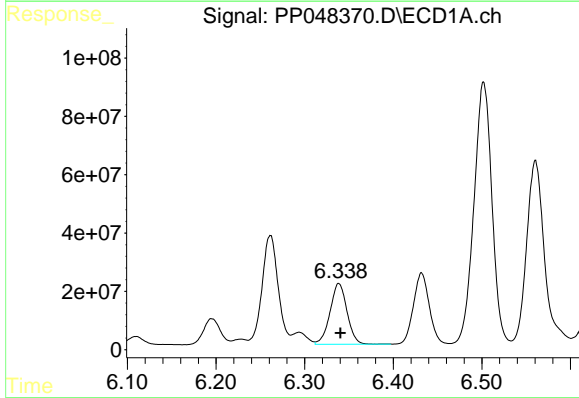
R.T.: 5.521 min  
 Delta R.T.: -0.005 min  
 Response: 1029745  
 Conc: 26.02 ng/ml

Instrument :  
 ECD\_P  
 ClientSampleId :



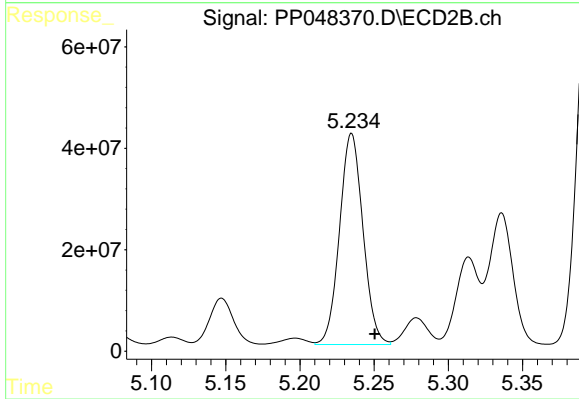
#19 AR-1242-4

R.T.: 4.670 min  
 Delta R.T.: -0.016 min  
 Response: 99348749  
 Conc: 3093.17 ng/ml



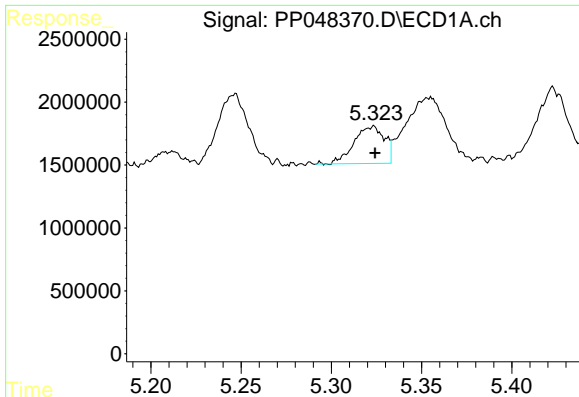
#20 AR-1242-5

R.T.: 6.339 min  
 Delta R.T.: -0.002 min  
 Response: 277916139  
 Conc: 6525.50 ng/ml



#20 AR-1242-5

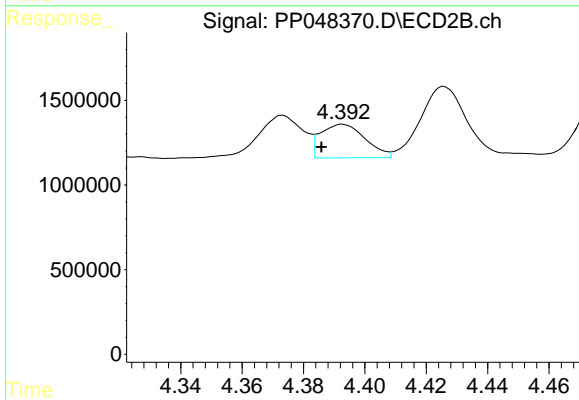
R.T.: 5.235 min  
 Delta R.T.: -0.016 min  
 Response: 457377822  
 Conc: 10951.96 ng/ml



#21 AR-1248-1

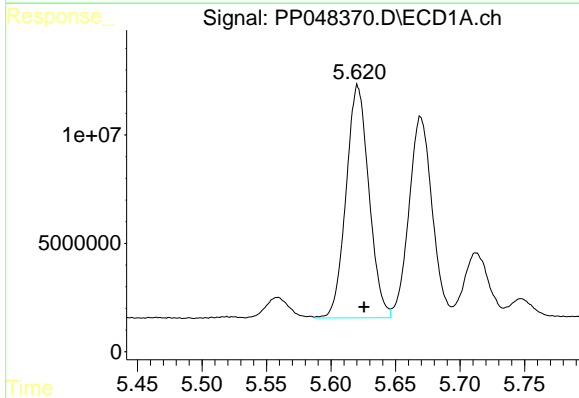
R.T.: 5.322 min  
 Delta R.T.: -0.002 min  
 Response: 3455875  
 Conc: 80.12 ng/ml

Instrument :  
 ECD\_P  
 ClientSampleId :



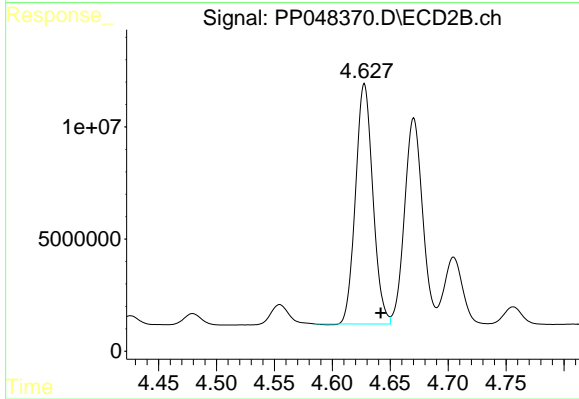
#21 AR-1248-1

R.T.: 4.393 min  
 Delta R.T.: 0.007 min  
 Response: 1999892  
 Conc: 54.64 ng/ml



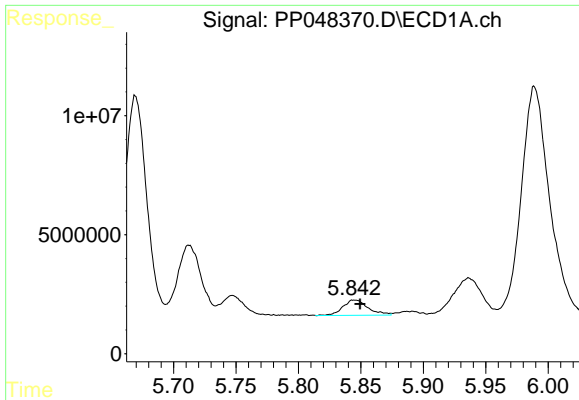
#22 AR-1248-2

R.T.: 5.621 min  
 Delta R.T.: -0.005 min  
 Response: 132448992  
 Conc: 2316.00 ng/ml



#22 AR-1248-2

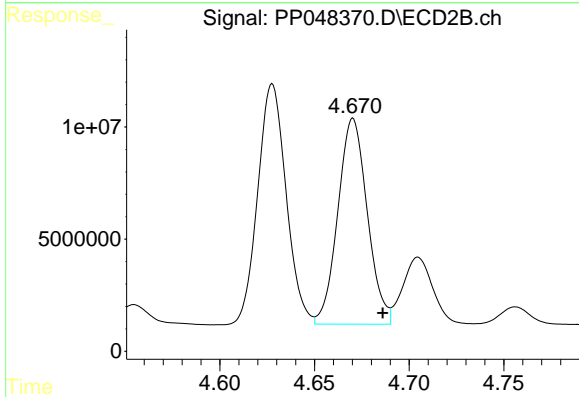
R.T.: 4.628 min  
 Delta R.T.: -0.014 min  
 Response: 111505680  
 Conc: 2341.40 ng/ml



#23 AR-1248-3

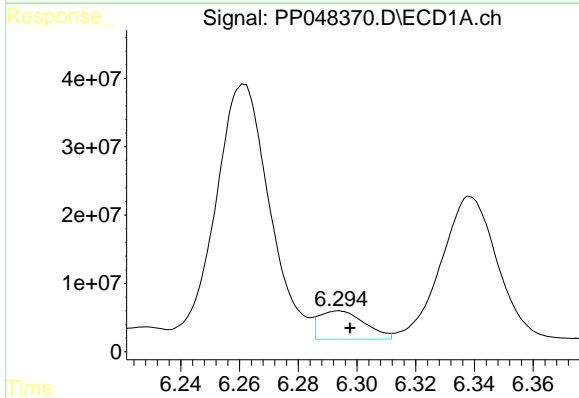
R.T.: 5.845 min  
 Delta R.T.: -0.004 min  
 Response: 9038328  
 Conc: 133.54 ng/ml

Instrument :  
 ECD\_P  
 ClientSampleId :



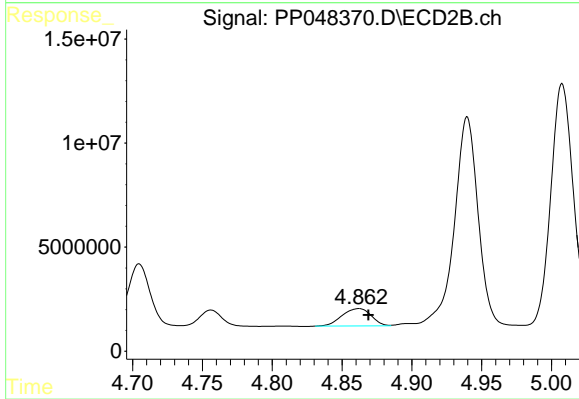
#23 AR-1248-3

R.T.: 4.670 min  
 Delta R.T.: -0.016 min  
 Response: 99348749  
 Conc: 2005.40 ng/ml



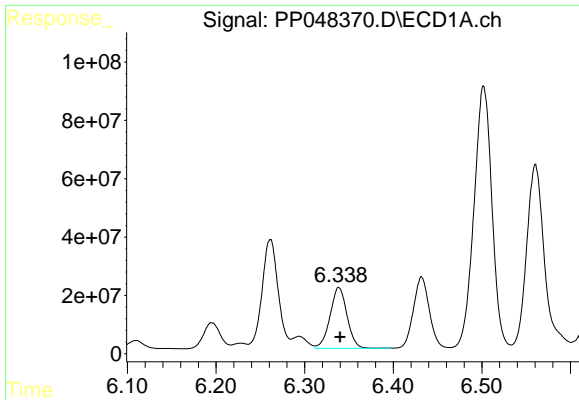
#24 AR-1248-4

R.T.: 6.293 min  
 Delta R.T.: -0.004 min  
 Response: 44669769  
 Conc: 574.39 ng/ml



#24 AR-1248-4

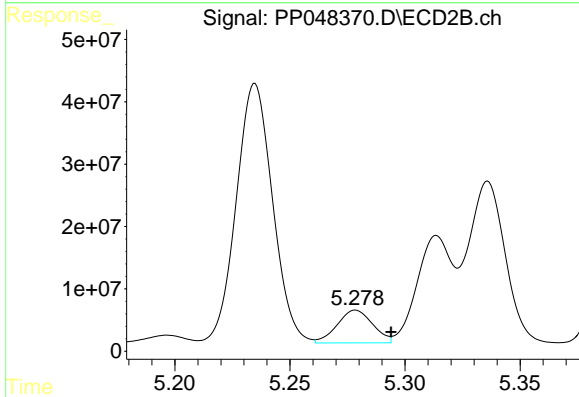
R.T.: 4.862 min  
 Delta R.T.: -0.007 min  
 Response: 12166144  
 Conc: 208.83 ng/ml



#25 AR-1248-5

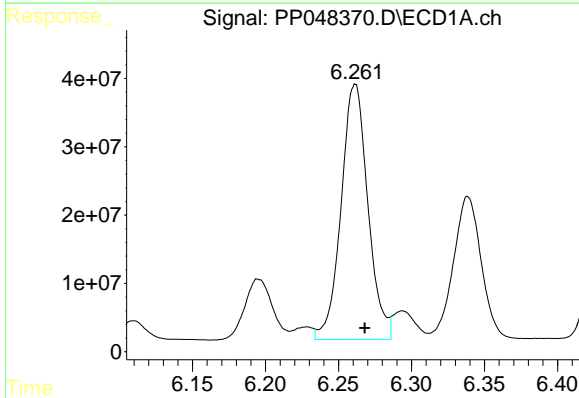
R.T.: 6.339 min  
 Delta R.T.: -0.001 min  
 Response: 277916139  
 Conc: 3653.59 ng/ml

Instrument :  
 ECD\_P  
 ClientSampleId :



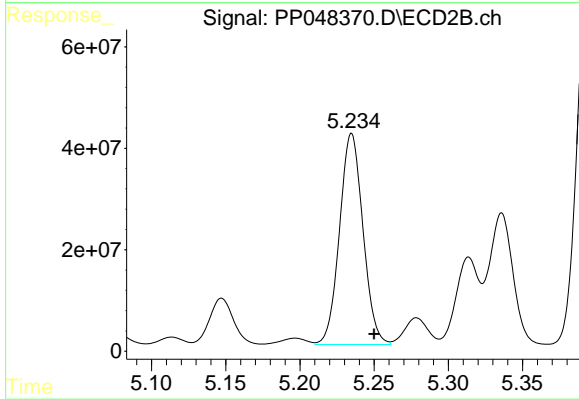
#25 AR-1248-5

R.T.: 5.279 min  
 Delta R.T.: -0.015 min  
 Response: 56661983  
 Conc: 939.41 ng/ml



#26 AR-1254-1

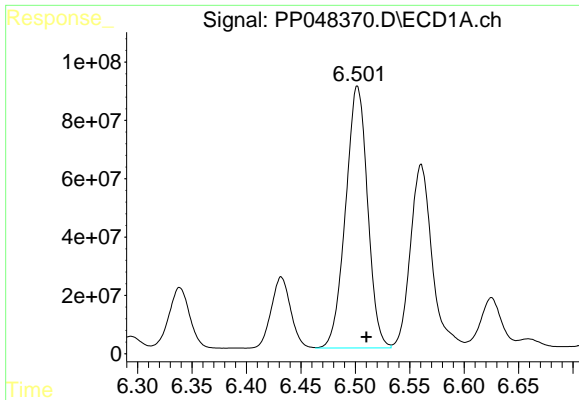
R.T.: 6.261 min  
 Delta R.T.: -0.007 min  
 Response: 478041786  
 Conc: 6584.95 ng/ml



#26 AR-1254-1

R.T.: 5.235 min  
 Delta R.T.: -0.015 min  
 Response: 457377822  
 Conc: 5217.37 ng/ml

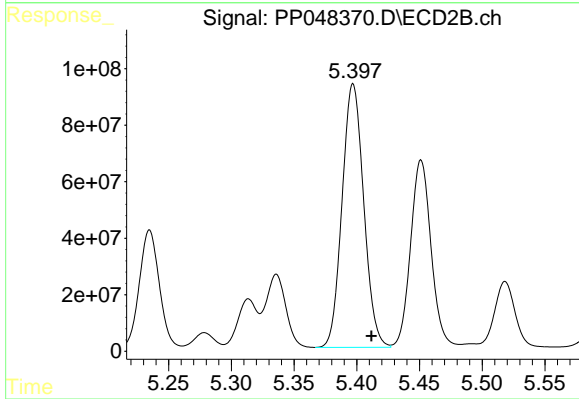




#27 AR-1254-2

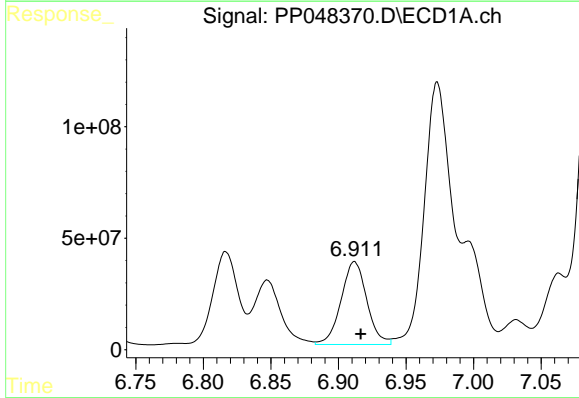
R.T.: 6.502 min  
 Delta R.T.: -0.008 min  
 Response: 1262355919  
 Conc: 10609.15 ng/ml

Instrument :  
 ECD\_P  
 ClientSampleId :



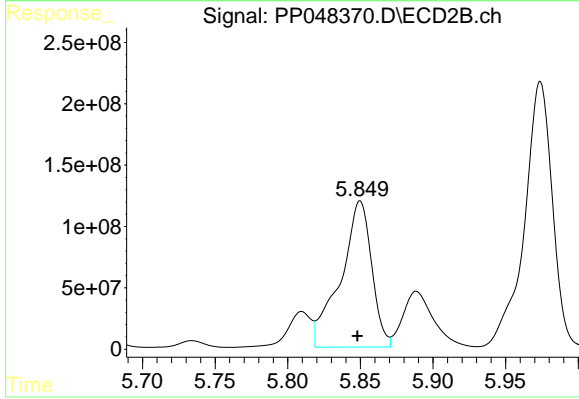
#27 AR-1254-2

R.T.: 5.397 min  
 Delta R.T.: -0.015 min  
 Response: 1119722063  
 Conc: 14902.60 ng/ml



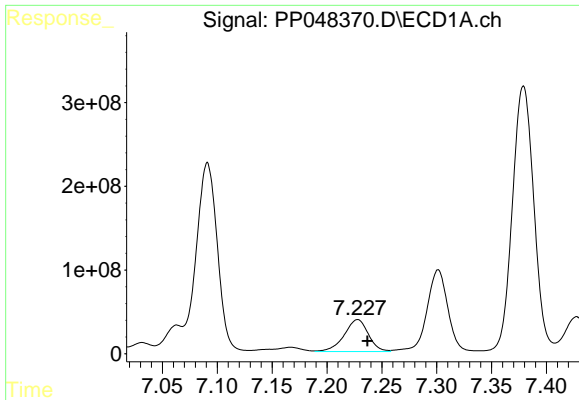
#28 AR-1254-3

R.T.: 6.912 min  
 Delta R.T.: -0.005 min  
 Response: 493633352  
 Conc: 4155.38 ng/ml



#28 AR-1254-3

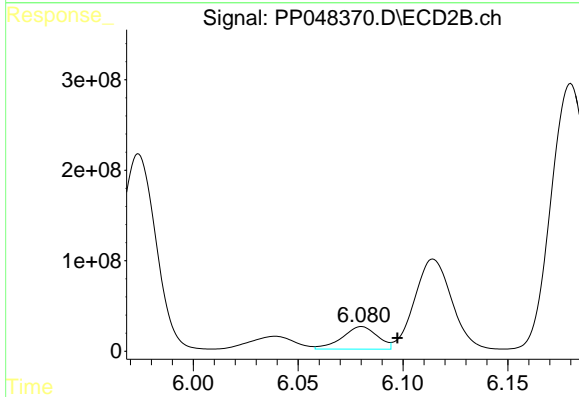
R.T.: 5.850 min  
 Delta R.T.: 0.002 min  
 Response: 1774315058  
 Conc: 14461.16 ng/ml



#29 AR-1254-4

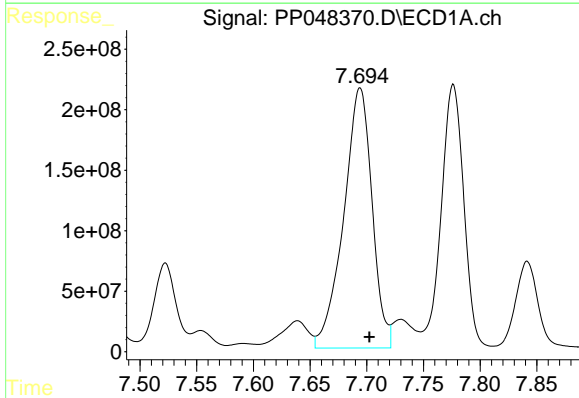
R.T.: 7.228 min  
 Delta R.T.: -0.009 min  
 Response: 586462134  
 Conc: 6501.84 ng/ml

Instrument :  
 ECD\_P  
 ClientSampleId :



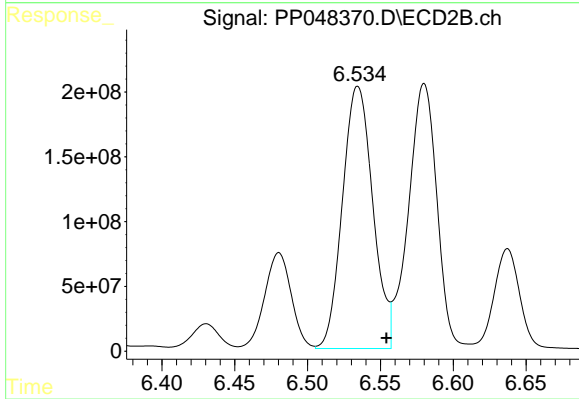
#29 AR-1254-4

R.T.: 6.080 min  
 Delta R.T.: -0.017 min  
 Response: 290962838  
 Conc: 3874.98 ng/ml



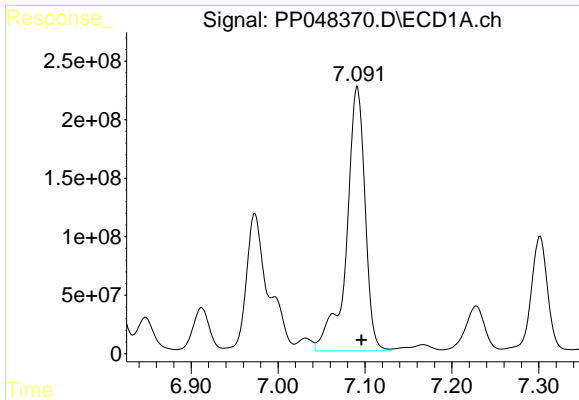
#30 AR-1254-5

R.T.: 7.694 min  
 Delta R.T.: -0.008 min  
 Response: 3753246104  
 Conc: 40503.52 ng/ml



#30 AR-1254-5

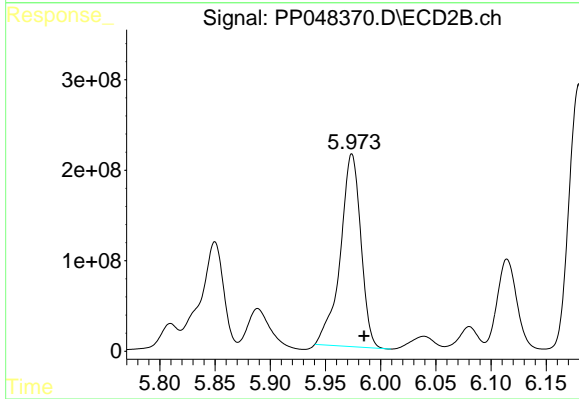
R.T.: 6.534 min  
 Delta R.T.: -0.020 min  
 Response: 2940960719  
 Conc: 29050.33 ng/ml



#31 AR-1260-1

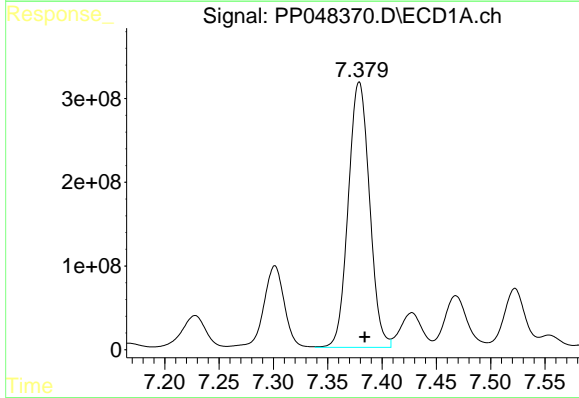
R.T.: 7.091 min  
 Delta R.T.: -0.005 min  
 Response: 3354682979  
 Conc: 35941.88 ng/ml

Instrument :  
 ECD\_P  
 ClientSampleId :



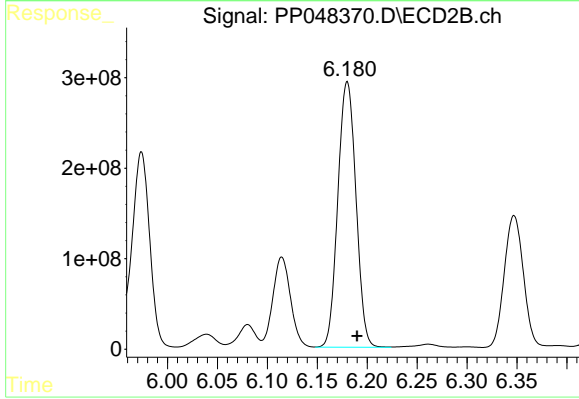
#31 AR-1260-1

R.T.: 5.974 min  
 Delta R.T.: -0.011 min  
 Response: 2757083184  
 Conc: 32207.61 ng/ml



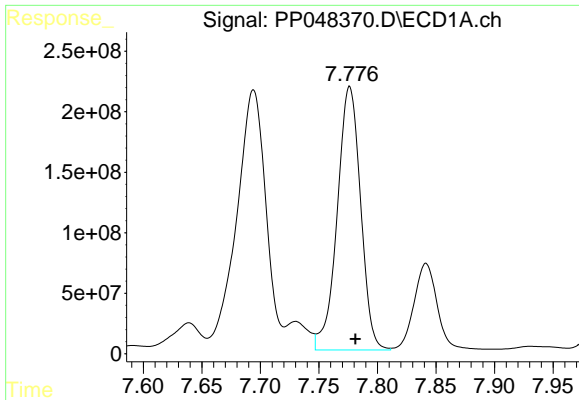
#32 AR-1260-2

R.T.: 7.379 min  
 Delta R.T.: -0.005 min  
 Response: 4318015816  
 Conc: 38627.60 ng/ml



#32 AR-1260-2

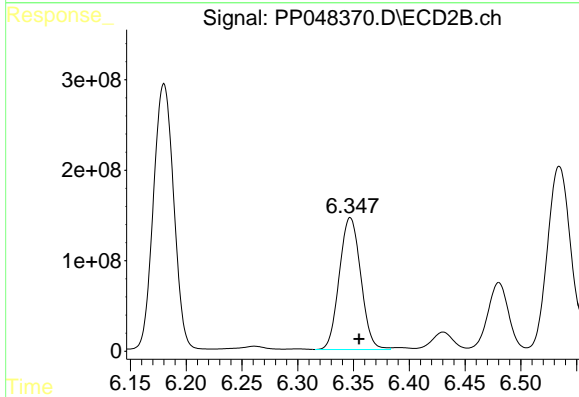
R.T.: 6.180 min  
 Delta R.T.: -0.010 min  
 Response: 3704497709  
 Conc: 35938.95 ng/ml



#33 AR-1260-3

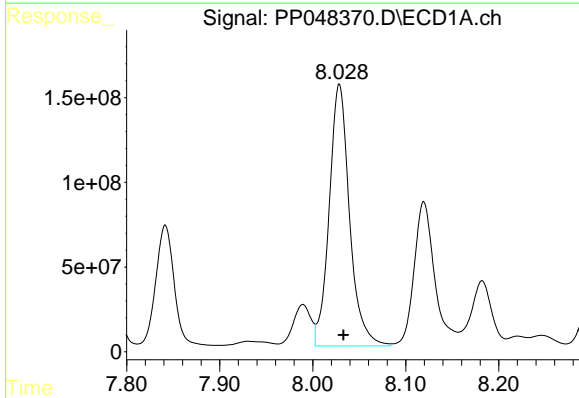
R.T.: 7.776 min  
 Delta R.T.: -0.005 min  
 Response: 3025635065  
 Conc: 35322.78 ng/ml

Instrument :  
 ECD\_P  
 ClientSampleId :



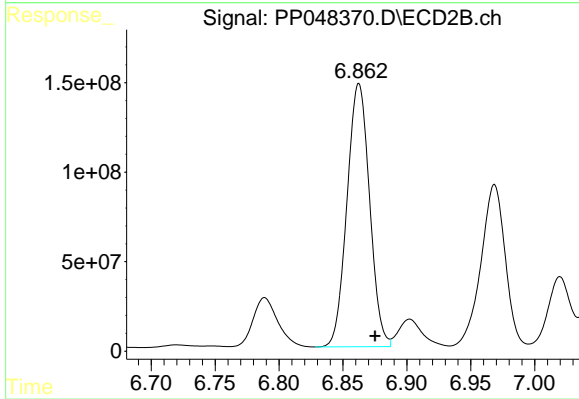
#33 AR-1260-3

R.T.: 6.347 min  
 Delta R.T.: -0.008 min  
 Response: 1947742493  
 Conc: 19669.70 ng/ml



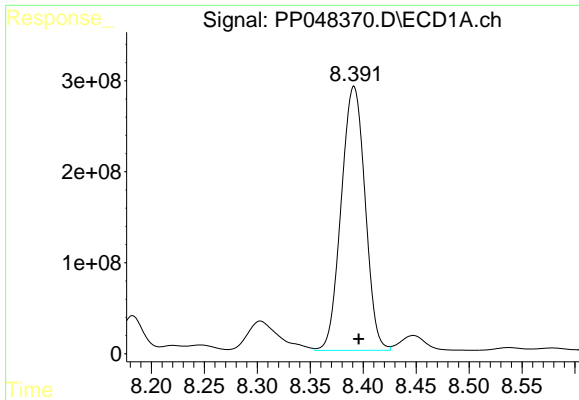
#34 AR-1260-4

R.T.: 8.029 min  
 Delta R.T.: -0.004 min  
 Response: 2351171525  
 Conc: 22660.39 ng/ml



#34 AR-1260-4

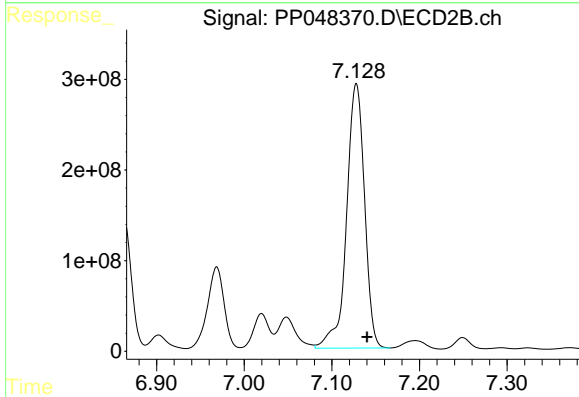
R.T.: 6.862 min  
 Delta R.T.: -0.013 min  
 Response: 1807752287  
 Conc: 21714.58 ng/ml



#35 AR-1260-5

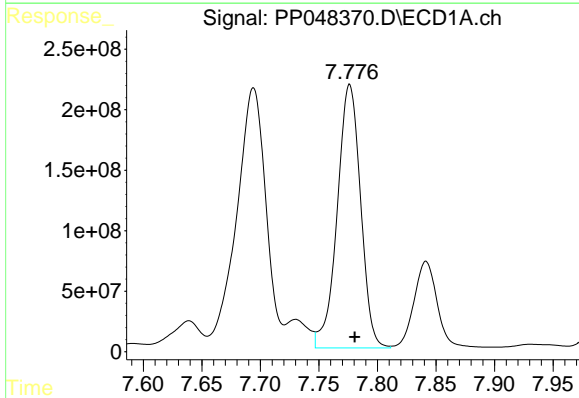
R.T.: 8.391 min  
 Delta R.T.: -0.004 min  
 Response: 4557576824  
 Conc: 22085.88 ng/ml

Instrument :  
 ECD\_P  
 ClientSampleId :



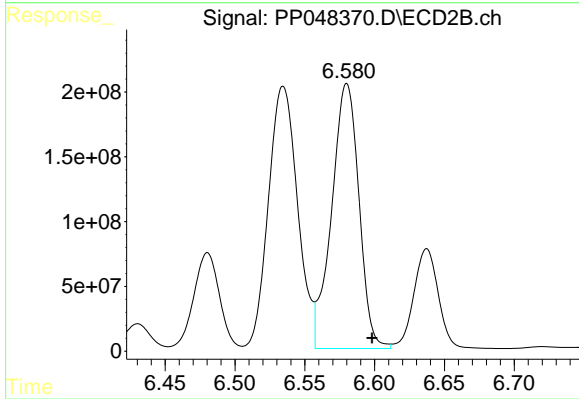
#35 AR-1260-5

R.T.: 7.128 min  
 Delta R.T.: -0.012 min  
 Response: 4154422959  
 Conc: 20938.35 ng/ml



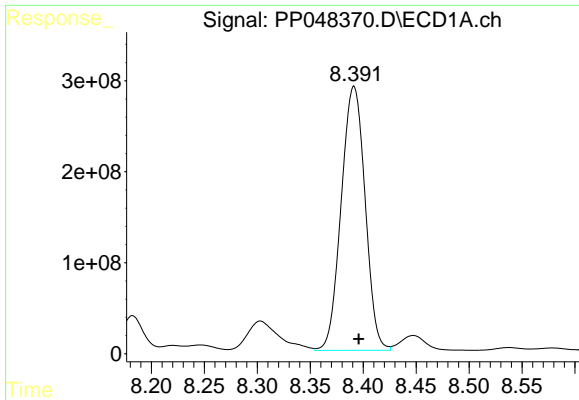
#36 AR-1262-1

R.T.: 7.776 min  
 Delta R.T.: -0.004 min  
 Response: 3025635065  
 Conc: 26529.11 ng/ml



#36 AR-1262-1

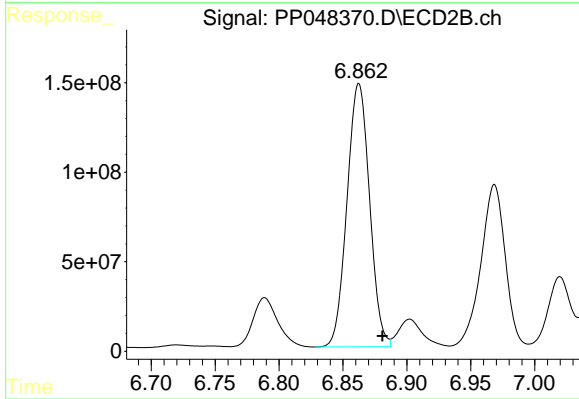
R.T.: 6.580 min  
 Delta R.T.: -0.018 min  
 Response: 2786956005  
 Conc: 25795.01 ng/ml



#37 AR-1262-2

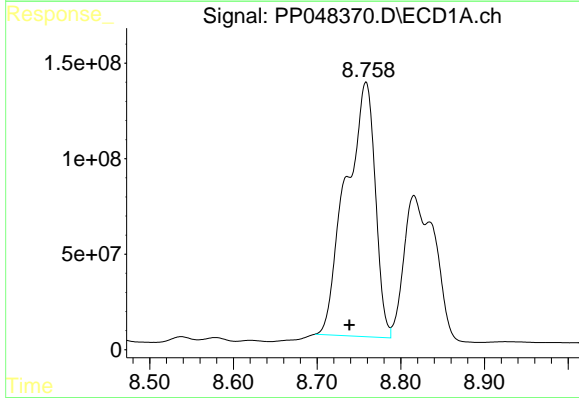
R.T.: 8.391 min  
 Delta R.T.: -0.005 min  
 Response: 4557576824  
 Conc: 21382.11 ng/ml

Instrument :  
 ECD\_P  
 ClientSampleId :



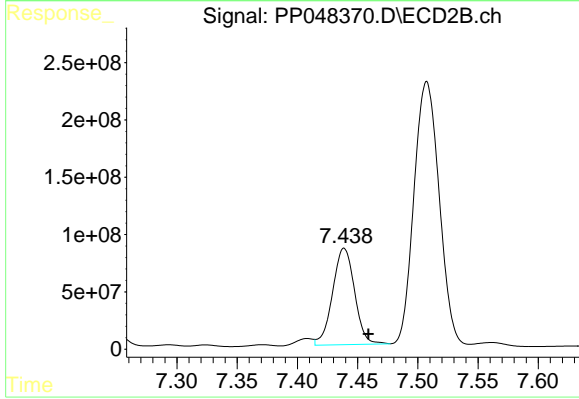
#37 AR-1262-2

R.T.: 6.862 min  
 Delta R.T.: -0.018 min  
 Response: 1807752287  
 Conc: 18266.73 ng/ml



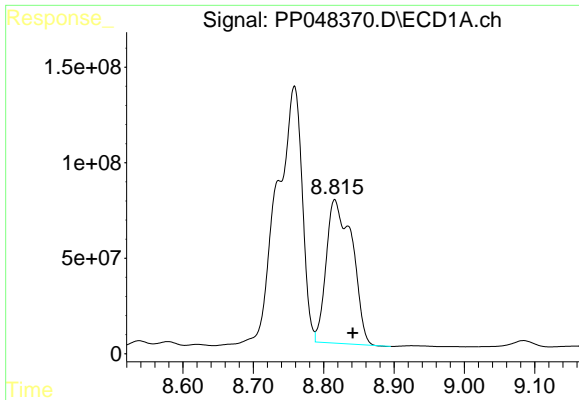
#38 AR-1262-3

R.T.: 8.758 min  
 Delta R.T.: 0.019 min  
 Response: 3235799990  
 Conc: 34721.24 ng/ml



#38 AR-1262-3

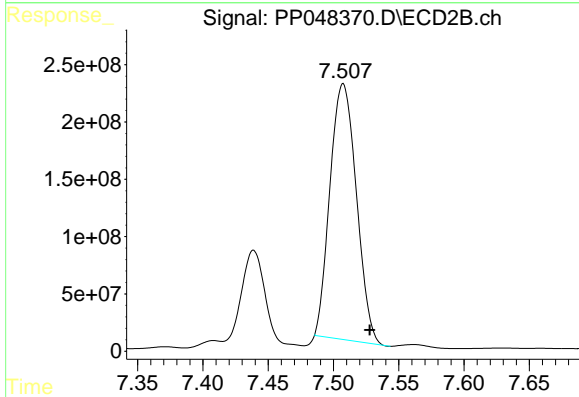
R.T.: 7.439 min  
 Delta R.T.: -0.020 min  
 Response: 1069856901  
 Conc: 14216.47 ng/ml



#39 AR-1262-4

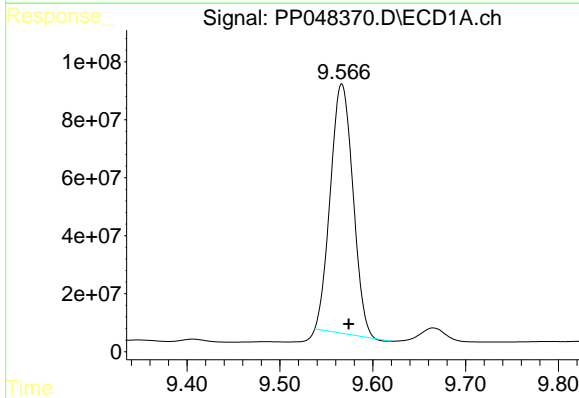
R.T.: 8.816 min  
 Delta R.T.: -0.026 min  
 Response: 1928989041  
 Conc: 32442.65 ng/ml

Instrument :  
 ECD\_P  
 ClientSampleId :



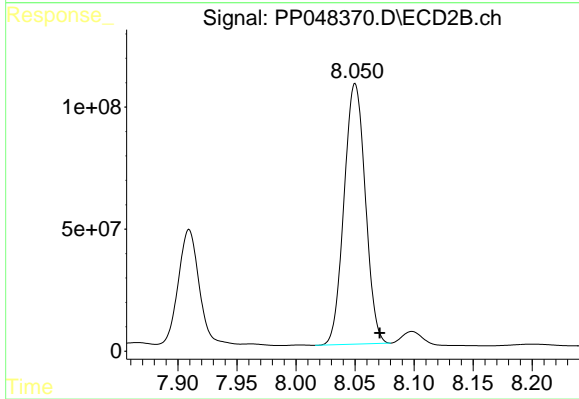
#39 AR-1262-4

R.T.: 7.507 min  
 Delta R.T.: -0.020 min  
 Response: 3143682255  
 Conc: 21584.36 ng/ml



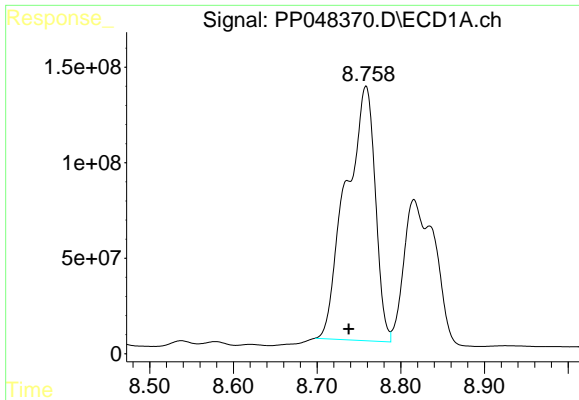
#40 AR-1262-5

R.T.: 9.567 min  
 Delta R.T.: -0.008 min  
 Response: 1451580722  
 Conc: 18340.18 ng/ml



#40 AR-1262-5

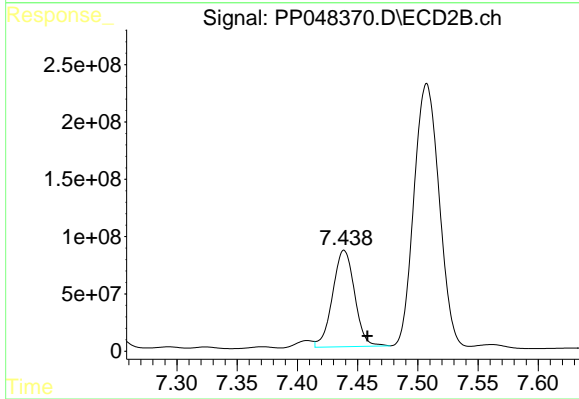
R.T.: 8.050 min  
 Delta R.T.: -0.021 min  
 Response: 1336594192  
 Conc: 19803.44 ng/ml



#41 AR-1268-1

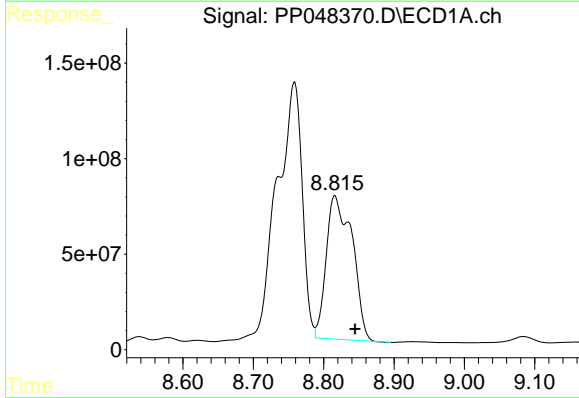
R.T.: 8.758 min  
 Delta R.T.: 0.020 min  
 Response: 3235799990  
 Conc: 12232.05 ng/ml

Instrument :  
 ECD\_P  
 ClientSampleId :



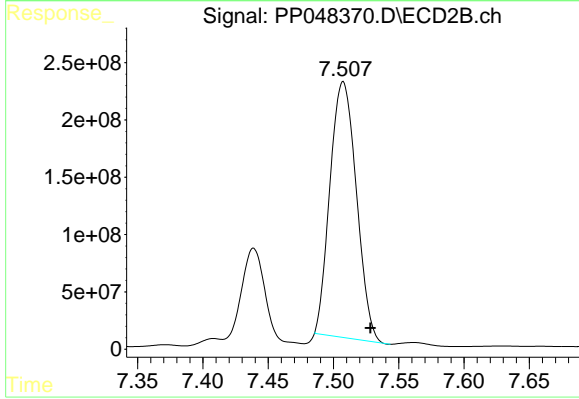
#41 AR-1268-1

R.T.: 7.439 min  
 Delta R.T.: -0.019 min  
 Response: 1069856901  
 Conc: 4580.91 ng/ml



#42 AR-1268-2

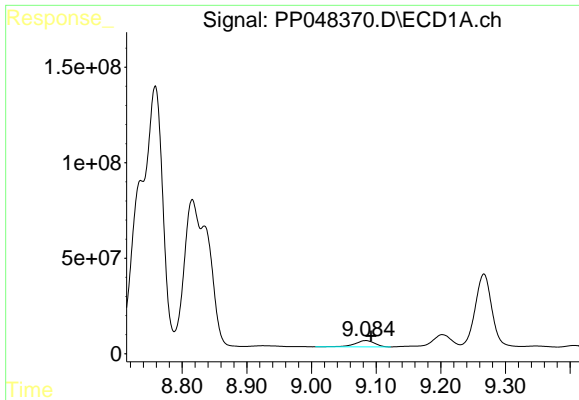
R.T.: 8.816 min  
 Delta R.T.: -0.029 min  
 Response: 1928989041  
 Conc: 7987.68 ng/ml



#42 AR-1268-2

R.T.: 7.507 min  
 Delta R.T.: -0.021 min  
 Response: 3143682255  
 Conc: 14529.56 ng/ml

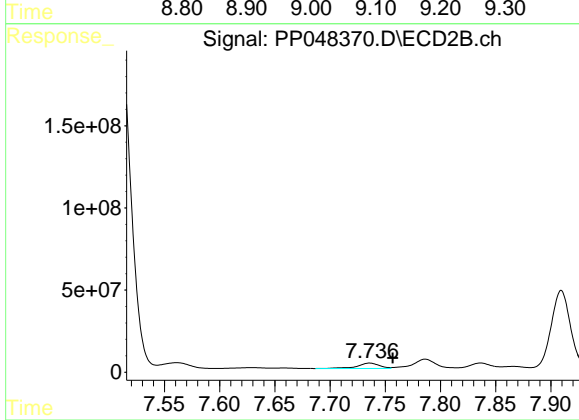




#43 AR-1268-3

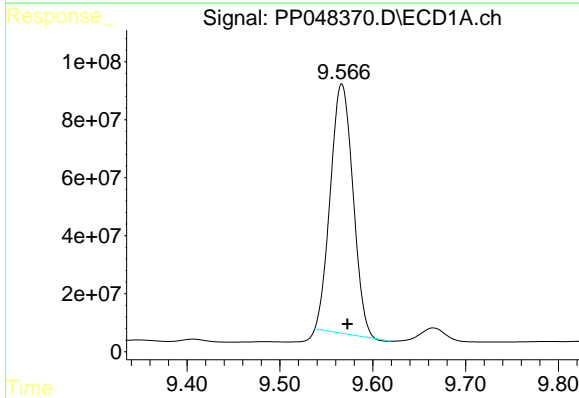
R.T.: 9.084 min  
 Delta R.T.: -0.008 min  
 Response: 71708099  
 Conc: 348.80 ng/ml

Instrument :  
 ECD\_P  
 ClientSampleId :



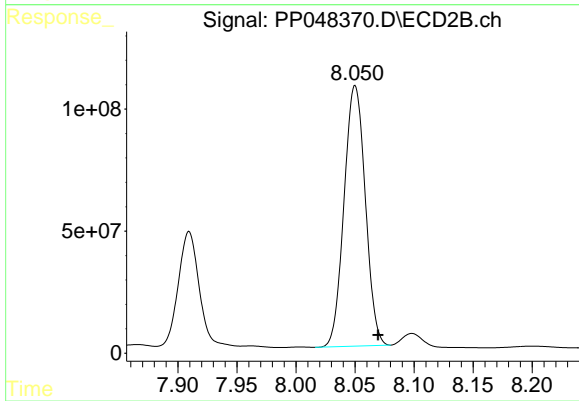
#43 AR-1268-3

R.T.: 7.736 min  
 Delta R.T.: -0.021 min  
 Response: 45759765  
 Conc: 246.18 ng/ml



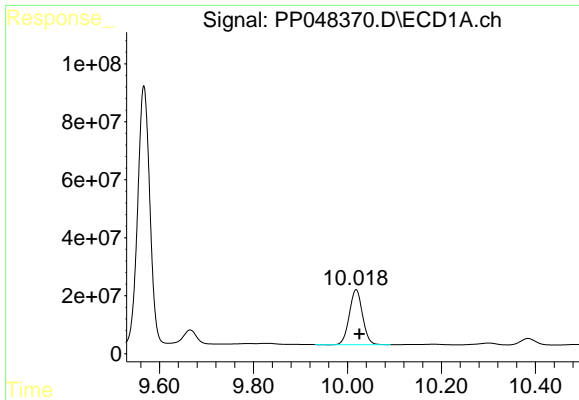
#44 AR-1268-4

R.T.: 9.567 min  
 Delta R.T.: -0.006 min  
 Response: 1451580722  
 Conc: 16159.29 ng/ml



#44 AR-1268-4

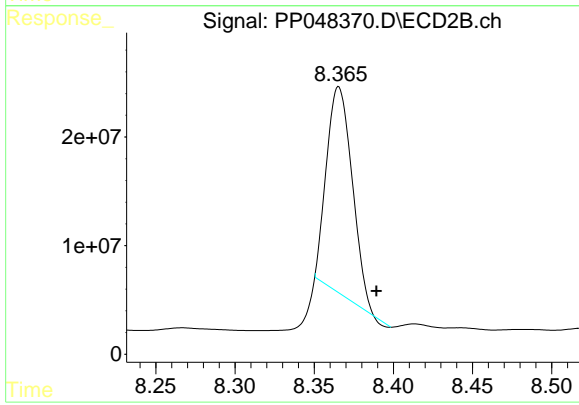
R.T.: 8.050 min  
 Delta R.T.: -0.019 min  
 Response: 1336594192  
 Conc: 16270.12 ng/ml



#45 AR-1268-5

R.T.: 10.018 min  
Delta R.T.: -0.007 min  
Response: 369238165  
Conc: 522.97 ng/ml

Instrument :  
ECD\_P  
ClientSampleId :



#45 AR-1268-5

R.T.: 8.365 min  
Delta R.T.: -0.024 min  
Response: 212999098  
Conc: 351.51 ng/ml