

Data Path : Z:\pestpcbsrv\HPCHEM1\ECD_P\Data\PP060222\
 Data File : PP048373.D
 Signal(s) : Signal #1: ECD1A.ch Signal #2: ECD2B.ch
 Acq On : 03 Jun 2022 05:59
 Operator : YP\AJ
 Sample : AR1660CCC500
 Misc :
 ALS Vial : 3 Sample Multiplier: 1

Instrument :
 ECD_P
 ClientSampleId :

Integration File signal 1: autoint1.e
 Integration File signal 2: autoint2.e
 Quant Time: Jun 03 06:25:37 2022
 Quant Method : Z:\pestpcbsrv\HPCHEM1\ECD_P\methods\PP052722.M
 Quant Title : GC EXTRACTABLES
 QLast Update : Fri May 27 23:53:39 2022
 Response via : Initial Calibration
 Integrator: ChemStation

Volume Inj. : 2 µl
 Signal #1 Phase : ZB-MR1 Signal #2 Phase: ZB-MR2
 Signal #1 Info : 30Mx0.32mmx 0.50µ Signal #2 Info : 30M x 0.32mm x 0.25µm

| Compound | RT#1 | RT#2 | Resp#1 | Resp#2 | ng/ml | ng/ml |
|-----------------------------|--------|--------|----------|----------|----------|------------|
| System Monitoring Compounds | | | | | | |
| 1) SA Tetrachlo... | 4.034 | 3.214 | 111.9E6 | 95146343 | 47.804 | 48.279 |
| 2) SA Decachlor... | 10.383 | 8.640 | 86375088 | 69123588 | 44.440 | 42.762 |
| Target Compounds | | | | | | |
| 3) L1 AR-1016-1 | 5.322 | 4.393 | 38220301 | 44699810 | 453.231 | 664.609 # |
| 4) L1 AR-1016-2 | 5.345 | 4.393 | 55216932 | 44699810 | 466.689 | 479.969 |
| 5) L1 AR-1016-3 | 5.412 | 4.580 | 34701618 | 24021858 | 513.521 | 468.926 |
| 6) L1 AR-1016-4 | 5.521 | 4.628f | 29319276 | 19252774 | 475.648 | 505.311 |
| 7) L1 AR-1016-5 | 5.845 | 4.855f | 30065949 | 19886871 | 533.755 | 416.518 |
| 8) L2 AR-1221-1 | 4.265 | 3.446 | 3989118 | 3104412 | 150.895 | 149.774 |
| 9) L2 AR-1221-2 | 4.364 | 3.536 | 5706498 | 4648056 | 278.624 | 302.615 |
| 10) L2 AR-1221-3 | 4.447 | 3.617 | 21145329 | 17631750 | 337.744 | 355.517 |
| 11) L3 AR-1232-1 | 4.447 | 3.617 | 21145329 | 17631750 | 407.104 | 408.226 |
| 12) L3 AR-1232-2 | 5.025 | 4.393 | 29251256 | 44699810 | 1218.401 | 1109.436 |
| 13) L3 AR-1232-3 | 5.345 | 4.580 | 55216932 | 24021858 | 1112.748 | 1164.363 |
| 14) L3 AR-1232-4 | 5.521 | 4.672 | 29319276 | 23466077 | 1226.497 | 1352.176 |
| 15) L3 AR-1232-5 | 5.621 | 4.855 | 26867720 | 19886871 | 1644.560 | 1015.272 # |
| 16) L4 AR-1242-1 | 5.322 | 4.393 | 38220301 | 44699810 | 683.462 | 937.358 # |
| 17) L4 AR-1242-2 | 5.345 | 4.393 | 55216932 | 44699810 | 671.377 | 672.724 |
| 18) L4 AR-1242-3 | 5.412 | 4.580 | 34701618 | 24021858 | 706.907 | 692.521 |
| 19) L4 AR-1242-4 | 5.521 | 4.672 | 29319276 | 23466077 | 740.898 | 730.604 |
| 20) L4 AR-1242-5 | 6.336 | 5.264 | 8543669 | 3228563 | 200.606 | 77.308 # |
| 21) L5 AR-1248-1 | 5.322 | 4.393 | 38220301 | 44699810 | 886.073 | 1221.303 # |
| 22) L5 AR-1248-2 | 5.621 | 4.628 | 26867720 | 19252774 | 469.807 | 404.271 |
| 23) L5 AR-1248-3 | 5.845 | 4.672 | 30065949 | 23466077 | 444.207 | 473.673 |
| 24) L5 AR-1248-4 | 6.293 | 4.855 | 6610195 | 19886871 | 84.998 | 341.352 # |
| 25) L5 AR-1248-5 | 6.336 | 5.275f | 8543669 | 3722388 | 112.318 | 61.714 # |
| 26) L6 AR-1254-1 | 6.262 | 5.264 | 24396946 | 3228563 | 336.064 | 36.829 # |
| 27) L6 AR-1254-2 | 6.503 | 5.396f | 24239369 | 19644882 | 203.714 | 261.458 # |
| 28) L6 AR-1254-3 | 6.912 | 5.850 | 14006308 | 31261896 | 117.904 | 254.793 # |
| 29) L6 AR-1254-4 | 7.228 | 6.082f | 11299880 | 3665418 | 125.277 | 48.815 # |
| 30) L6 AR-1254-5 | 7.694 | 6.536f | 73749508 | 56152203 | 795.875 | 554.662 # |
| 31) L7 AR-1260-1 | 7.090 | 5.974 | 48817557 | 41881106 | 523.029 | 489.245 |
| 32) L7 AR-1260-2 | 7.379 | 6.180 | 55725122 | 50741369 | 498.499 | 492.264 |
| 33) L7 AR-1260-3 | 7.775 | 6.345 | 41544965 | 46499167 | 485.017 | 469.582 |
| 34) L7 AR-1260-4 | 8.027 | 6.862 | 48952152 | 35636466 | 471.797 | 428.062 |
| 35) L7 AR-1260-5 | 8.390 | 7.128 | 89306362 | 82529584 | 432.776 | 415.950 |
| 36) L8 AR-1262-1 | 7.775 | 6.580f | 41544965 | 38633260 | 364.271 | 357.575 |
| 37) L8 AR-1262-2 | 8.390 | 6.862f | 89306362 | 35636466 | 418.985 | 360.095 |
| 38) L8 AR-1262-3 | 8.756f | 7.439f | 56562111 | 16420269 | 606.931 | 218.196 # |
| 39) L8 AR-1262-4 | 8.815f | 7.506f | 34044204 | 54946844 | 572.572 | 377.262 # |
| 40) L8 AR-1262-5 | 9.565 | 8.050f | 20817634 | 19173664 | 263.023 | 284.084 |
| 41) L9 AR-1268-1 | 8.756f | 7.439f | 56562111 | 16420269 | 213.818 | 70.308 # |

Data Path : Z:\pestpcbsrv\HPCHEM1\ECD_P\Data\PP060222\
 Data File : PP048373.D
 Signal(s) : Signal #1: ECD1A.ch Signal #2: ECD2B.ch
 Acq On : 03 Jun 2022 05:59
 Operator : YP\AJ
 Sample : AR1660CCC500
 Misc :
 ALS Vial : 3 Sample Multiplier: 1

Instrument :
 ECD_P
 ClientSampleId :

Integration File signal 1: autoint1.e
 Integration File signal 2: autoint2.e
 Quant Time: Jun 03 06:25:37 2022
 Quant Method : Z:\pestpcbsrv\HPCHEM1\ECD_P\methods\PP052722.M
 Quant Title : GC EXTRACTABLES
 QLast Update : Fri May 27 23:53:39 2022
 Response via : Initial Calibration
 Integrator: ChemStation

Volume Inj. : 2 µl
 Signal #1 Phase : ZB-MR1 Signal #2 Phase: ZB-MR2
 Signal #1 Info : 30Mx0.32mmx 0.50µ Signal #2 Info : 30M x 0.32mm x 0.25µm

| | Compound | RT#1 | RT#2 | Resp#1 | Resp#2 | ng/ml | ng/ml |
|-----|--------------|--------|--------|----------|----------|---------|-----------|
| 42) | L9 AR-1268-2 | 8.815f | 7.506f | 34044204 | 54946844 | 140.972 | 253.955 # |
| 43) | L9 AR-1268-3 | 9.085 | 7.735f | 1690023 | 1240441 | 8.221 | 6.673 |
| 44) | L9 AR-1268-4 | 9.565 | 8.050f | 20817634 | 19173664 | 231.746 | 233.398 |
| 45) | L9 AR-1268-5 | 10.016 | 8.366f | 7503473 | 3995592 | 10.627 | 6.594 # |

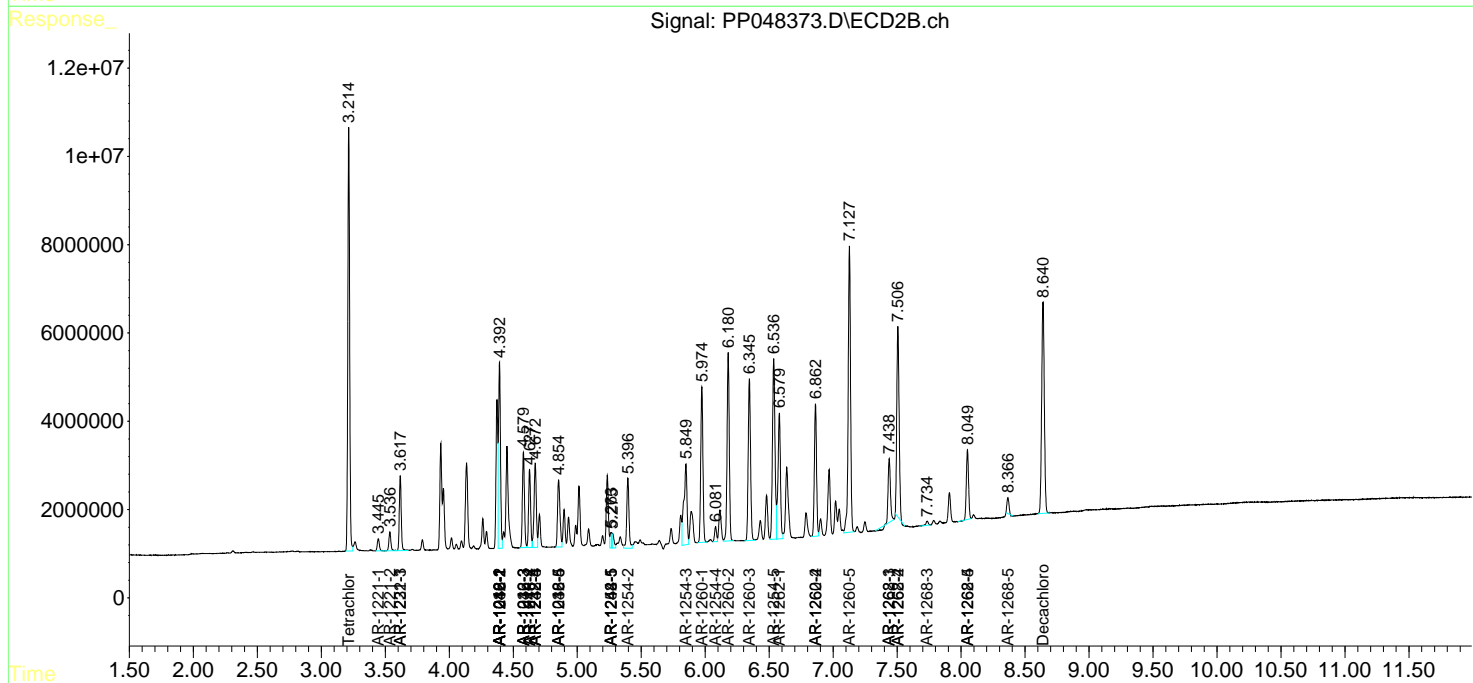
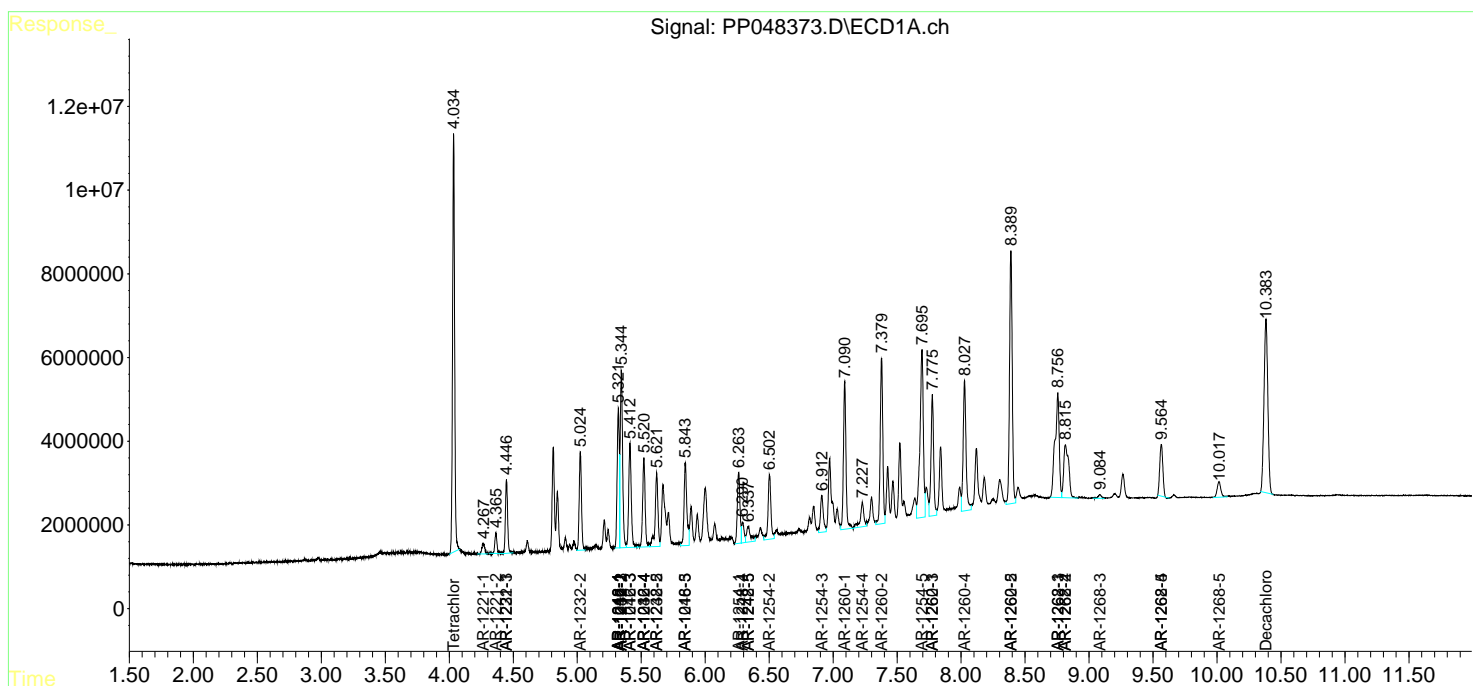
(f)=RT Delta > 1/2 Window (#)=Amounts differ by > 25% (m)=manual int.

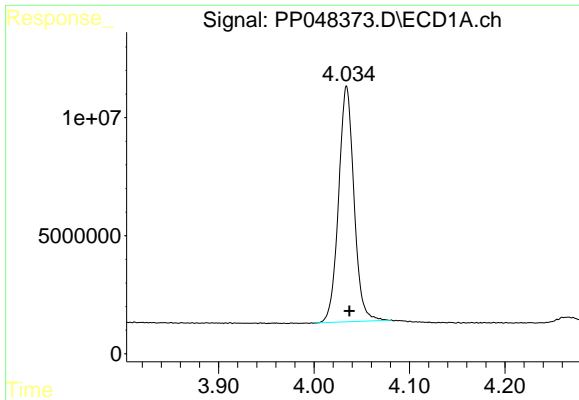
Data Path : Z:\pestpcbsrv\HPCHEM1\ECD_P\Data\PP060222\
 Data File : PP048373.D
 Signal(s) : Signal #1: ECD1A.ch Signal #2: ECD2B.ch
 Acq On : 03 Jun 2022 05:59
 Operator : YP\AJ
 Sample : AR1660CCC500
 Misc :
 ALS Vial : 3 Sample Multiplier: 1

Instrument :
 ECD_P
 ClientSampleId :

Integration File signal 1: autoint1.e
 Integration File signal 2: autoint2.e
 Quant Time: Jun 03 06:25:37 2022
 Quant Method : Z:\pestpcbsrv\HPCHEM1\ECD_P\methods\PP052722.M
 Quant Title : GC EXTRACTABLES
 QLast Update : Fri May 27 23:53:39 2022
 Response via : Initial Calibration
 Integrator: ChemStation

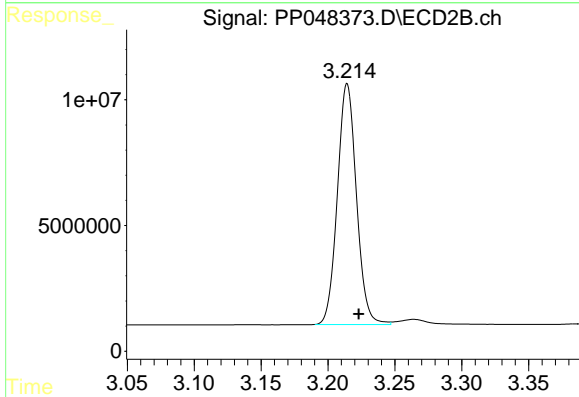
Volume Inj. : 2 µl
 Signal #1 Phase : ZB-MR1 Signal #2 Phase: ZB-MR2
 Signal #1 Info : 30Mx0.32mmx 0.50µ Signal #2 Info : 30M x 0.32mm x 0.25µm



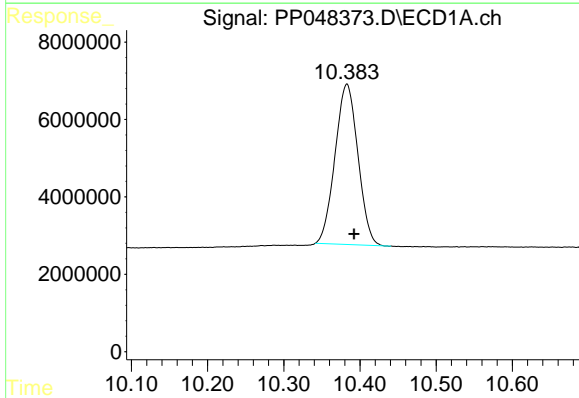


#1 Tetrachloro-m-xylene
 R.T.: 4.034 min
 Delta R.T.: -0.003 min
 Response: 111944923
 Conc: 47.80 ng/ml

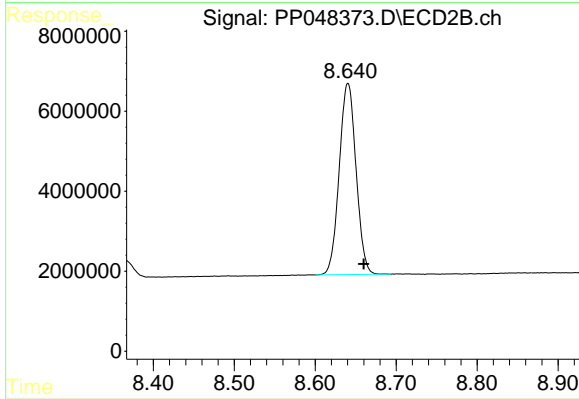
Instrument :
 ECD_P
 ClientSampleId :



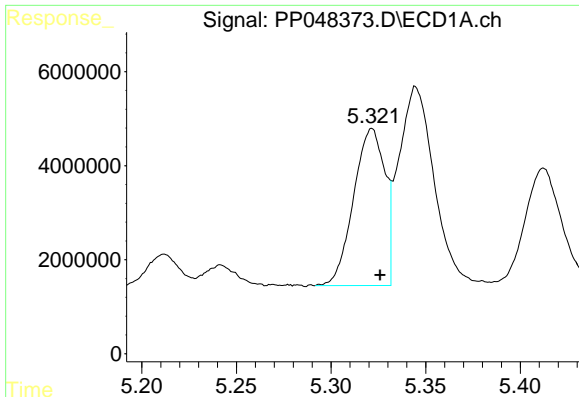
#1 Tetrachloro-m-xylene
 R.T.: 3.214 min
 Delta R.T.: -0.009 min
 Response: 95146343
 Conc: 48.28 ng/ml



#2 Decachlorobiphenyl
 R.T.: 10.383 min
 Delta R.T.: -0.010 min
 Response: 86375088
 Conc: 44.44 ng/ml



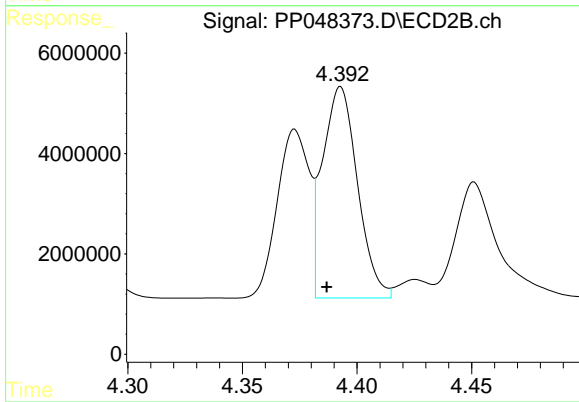
#2 Decachlorobiphenyl
 R.T.: 8.640 min
 Delta R.T.: -0.020 min
 Response: 69123588
 Conc: 42.76 ng/ml



#3 AR-1016-1

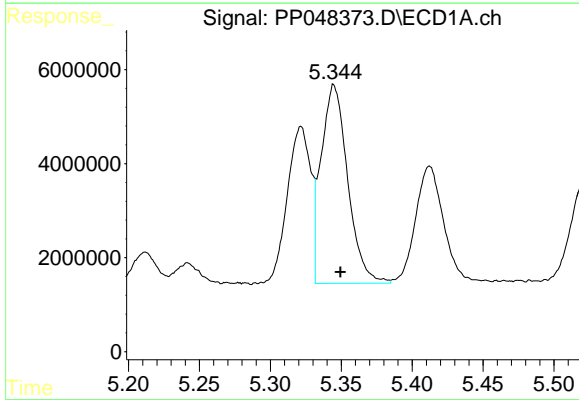
R.T.: 5.322 min
 Delta R.T.: -0.004 min
 Response: 38220301
 Conc: 453.23 ng/ml

Instrument :
 ECD_P
 ClientSampleId :



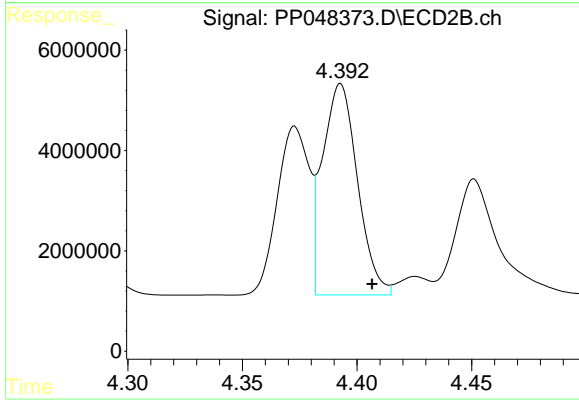
#3 AR-1016-1

R.T.: 4.393 min
 Delta R.T.: 0.006 min
 Response: 44699810
 Conc: 664.61 ng/ml



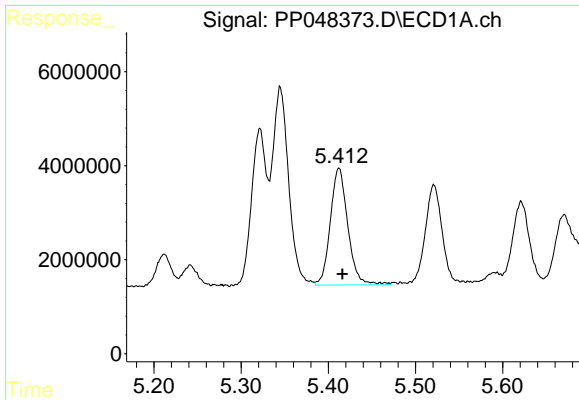
#4 AR-1016-2

R.T.: 5.345 min
 Delta R.T.: -0.005 min
 Response: 55216932
 Conc: 466.69 ng/ml



#4 AR-1016-2

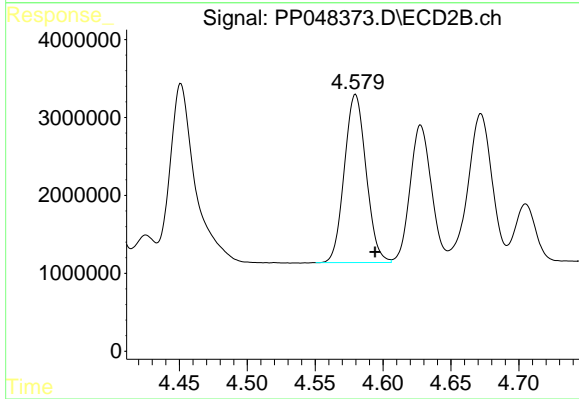
R.T.: 4.393 min
 Delta R.T.: -0.014 min
 Response: 44699810
 Conc: 479.97 ng/ml



#5 AR-1016-3

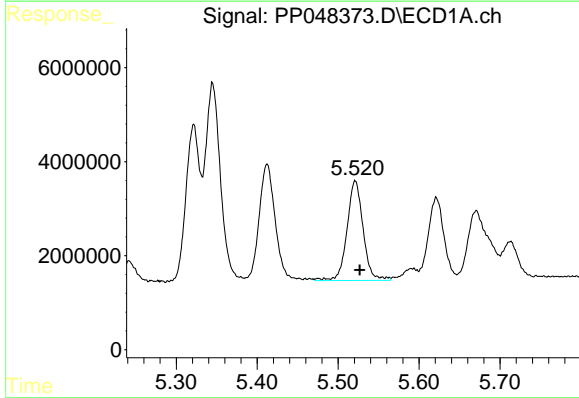
R.T.: 5.412 min
Delta R.T.: -0.004 min
Response: 34701618
Conc: 513.52 ng/ml

Instrument :
ECD_P
ClientSampleId :



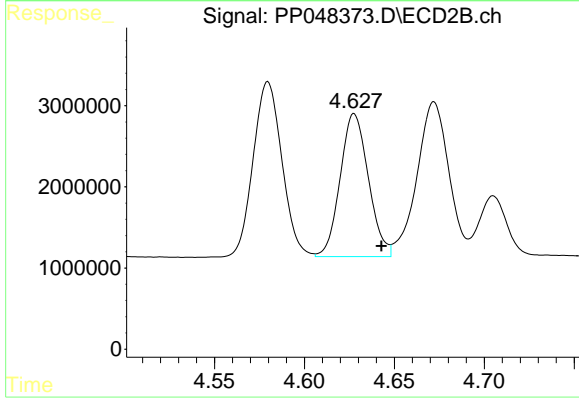
#5 AR-1016-3

R.T.: 4.580 min
Delta R.T.: -0.014 min
Response: 24021858
Conc: 468.93 ng/ml



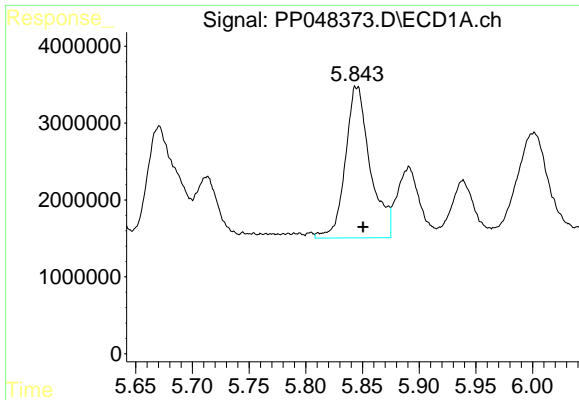
#6 AR-1016-4

R.T.: 5.521 min
Delta R.T.: -0.005 min
Response: 29319276
Conc: 475.65 ng/ml



#6 AR-1016-4

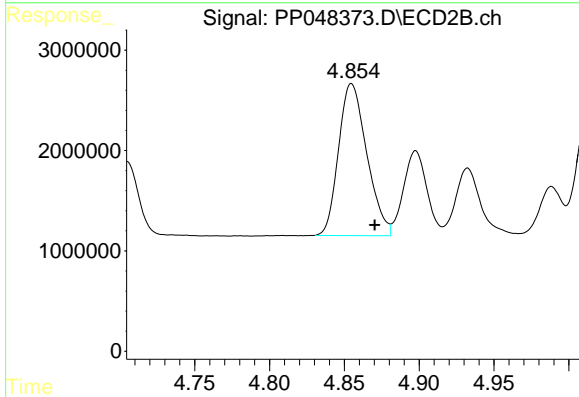
R.T.: 4.628 min
Delta R.T.: -0.015 min
Response: 19252774
Conc: 505.31 ng/ml



#7 AR-1016-5

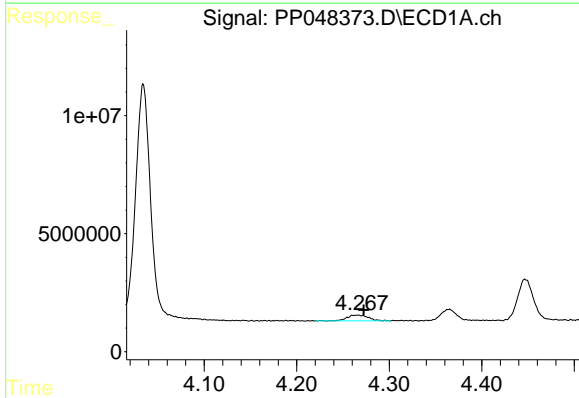
R.T.: 5.845 min
 Delta R.T.: -0.006 min
 Response: 30065949
 Conc: 533.75 ng/ml

Instrument :
 ECD_P
 ClientSampleId :



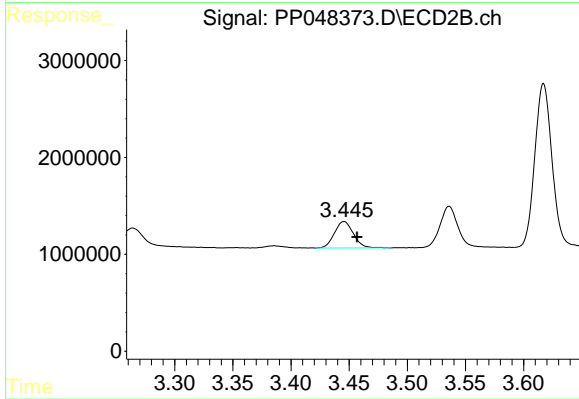
#7 AR-1016-5

R.T.: 4.855 min
 Delta R.T.: -0.015 min
 Response: 19886871
 Conc: 416.52 ng/ml



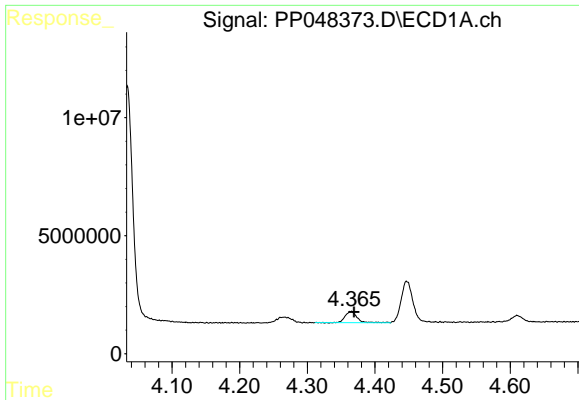
#8 AR-1221-1

R.T.: 4.265 min
 Delta R.T.: -0.007 min
 Response: 3989118
 Conc: 150.90 ng/ml



#8 AR-1221-1

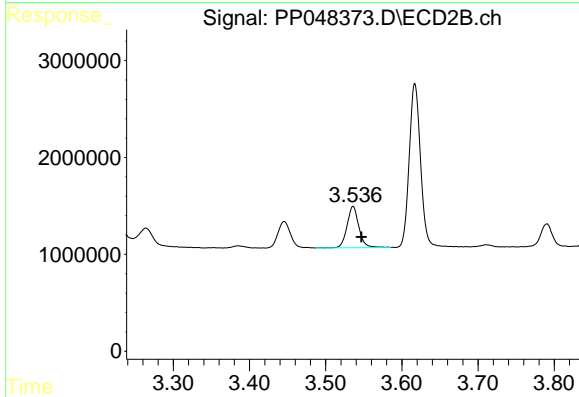
R.T.: 3.446 min
 Delta R.T.: -0.011 min
 Response: 3104412
 Conc: 149.77 ng/ml



#9 AR-1221-2

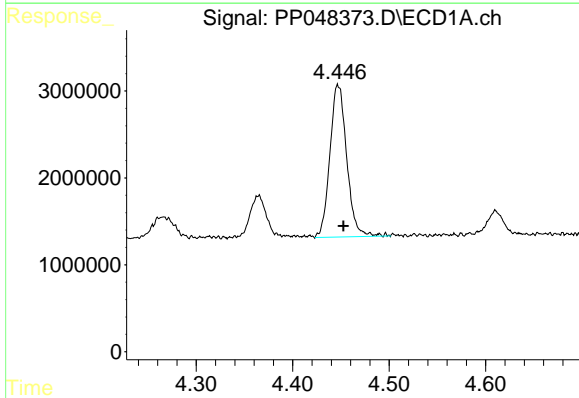
R.T.: 4.364 min
 Delta R.T.: -0.005 min
 Response: 5706498
 Conc: 278.62 ng/ml

Instrument :
 ECD_P
 ClientSampleId :



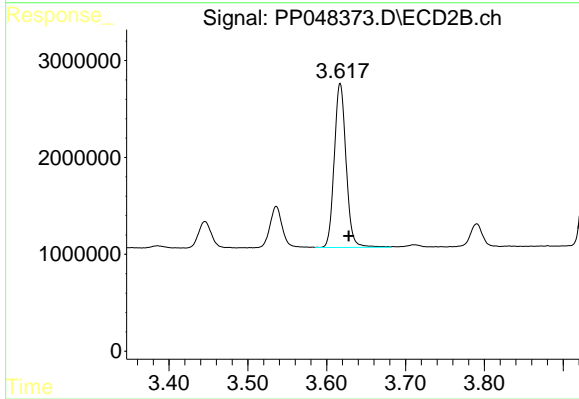
#9 AR-1221-2

R.T.: 3.536 min
 Delta R.T.: -0.011 min
 Response: 4648056
 Conc: 302.61 ng/ml



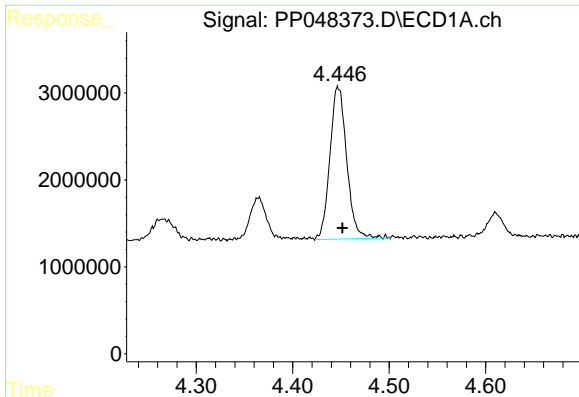
#10 AR-1221-3

R.T.: 4.447 min
 Delta R.T.: -0.005 min
 Response: 21145329
 Conc: 337.74 ng/ml



#10 AR-1221-3

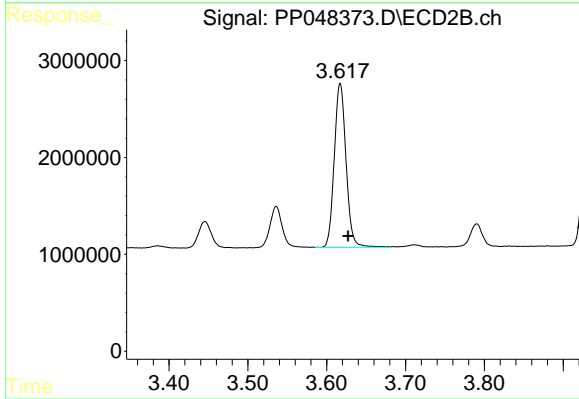
R.T.: 3.617 min
 Delta R.T.: -0.011 min
 Response: 17631750
 Conc: 355.52 ng/ml



#11 AR-1232-1

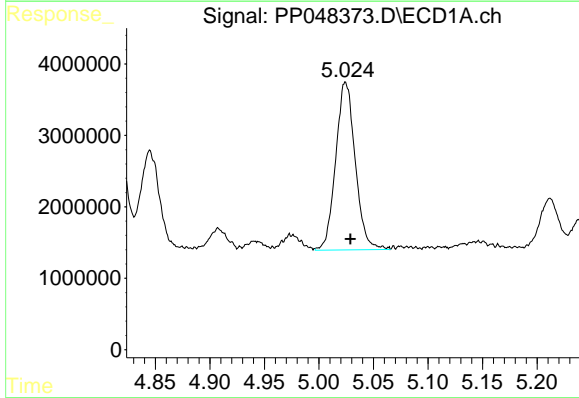
R.T.: 4.447 min
 Delta R.T.: -0.004 min
 Response: 21145329
 Conc: 407.10 ng/ml

Instrument :
 ECD_P
 ClientSampleId :



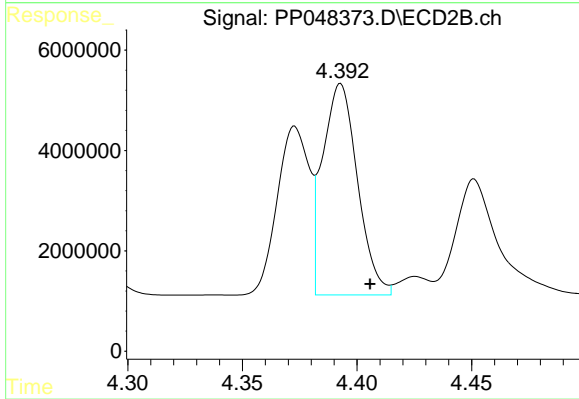
#11 AR-1232-1

R.T.: 3.617 min
 Delta R.T.: -0.010 min
 Response: 17631750
 Conc: 408.23 ng/ml



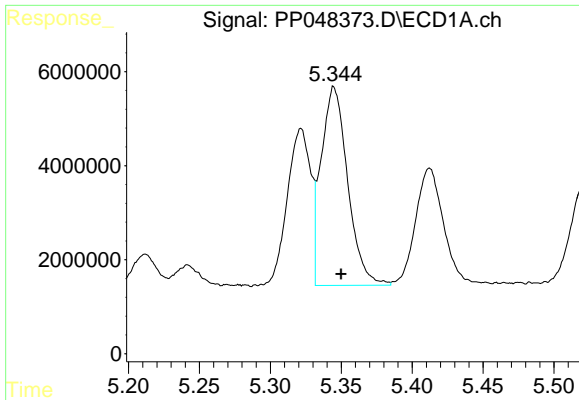
#12 AR-1232-2

R.T.: 5.025 min
 Delta R.T.: -0.004 min
 Response: 29251256
 Conc: 1218.40 ng/ml



#12 AR-1232-2

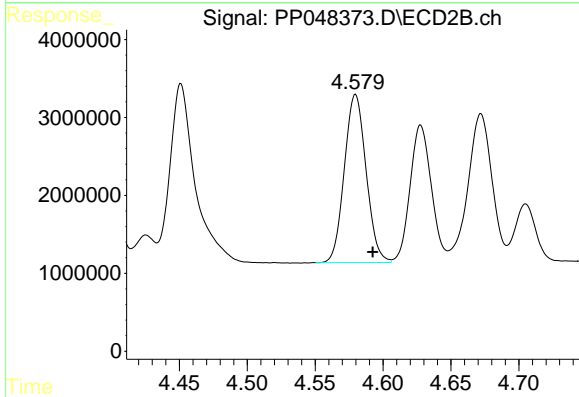
R.T.: 4.393 min
 Delta R.T.: -0.013 min
 Response: 44699810
 Conc: 1109.44 ng/ml



#13 AR-1232-3

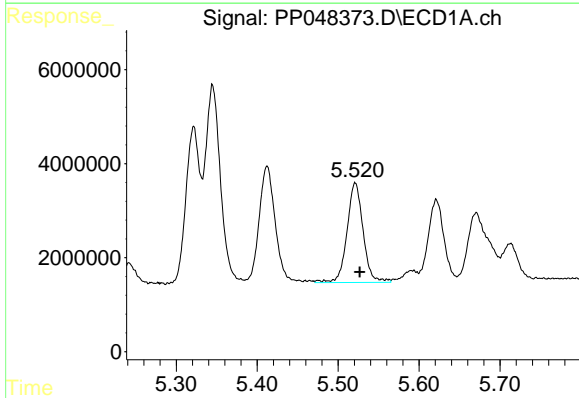
R.T.: 5.345 min
 Delta R.T.: -0.005 min
 Response: 55216932
 Conc: 1112.75 ng/m

Instrument :
 ECD_P
 ClientSampleId :



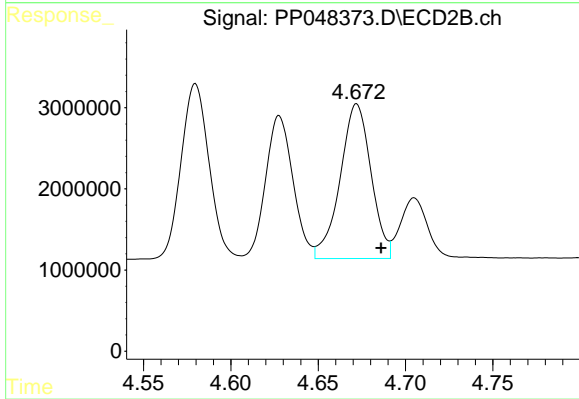
#13 AR-1232-3

R.T.: 4.580 min
 Delta R.T.: -0.013 min
 Response: 24021858
 Conc: 1164.36 ng/ml



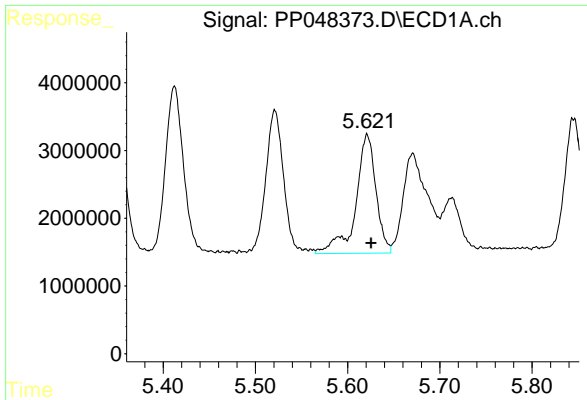
#14 AR-1232-4

R.T.: 5.521 min
 Delta R.T.: -0.006 min
 Response: 29319276
 Conc: 1226.50 ng/ml



#14 AR-1232-4

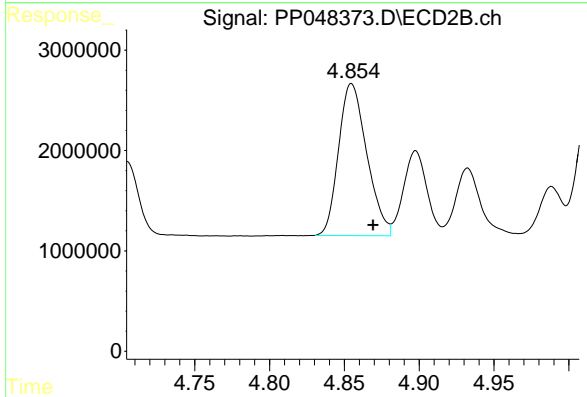
R.T.: 4.672 min
 Delta R.T.: -0.014 min
 Response: 23466077
 Conc: 1352.18 ng/ml



#15 AR-1232-5

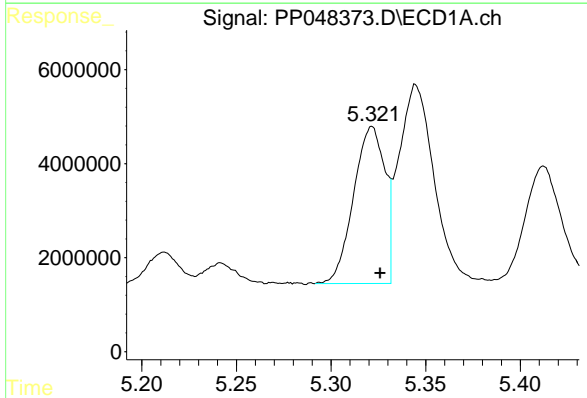
R.T.: 5.621 min
 Delta R.T.: -0.004 min
 Response: 26867720
 Conc: 1644.56 ng/ml

Instrument :
 ECD_P
 ClientSampleId :



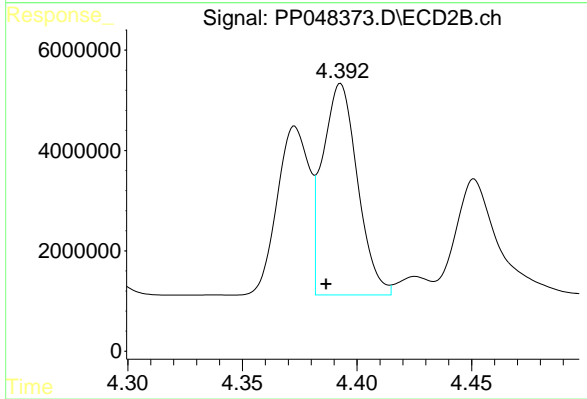
#15 AR-1232-5

R.T.: 4.855 min
 Delta R.T.: -0.014 min
 Response: 19886871
 Conc: 1015.27 ng/ml



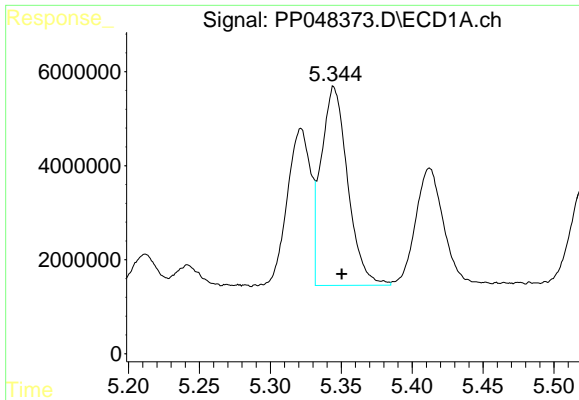
#16 AR-1242-1

R.T.: 5.322 min
 Delta R.T.: -0.004 min
 Response: 38220301
 Conc: 683.46 ng/ml



#16 AR-1242-1

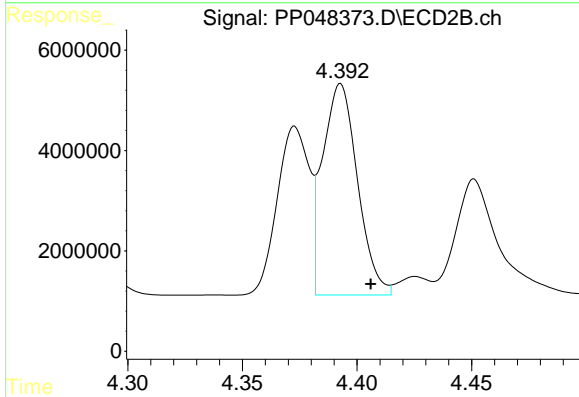
R.T.: 4.393 min
 Delta R.T.: 0.006 min
 Response: 44699810
 Conc: 937.36 ng/ml



#17 AR-1242-2

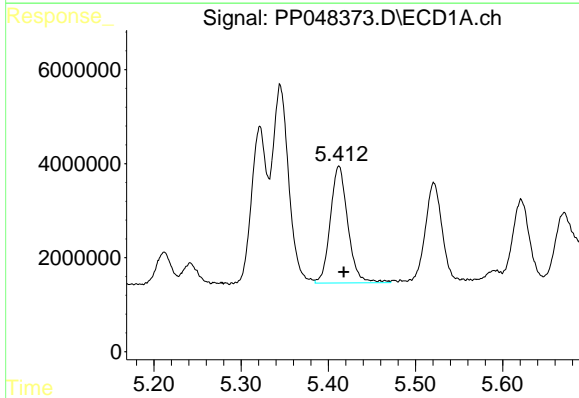
R.T.: 5.345 min
 Delta R.T.: -0.005 min
 Response: 55216932
 Conc: 671.38 ng/ml

Instrument :
 ECD_P
 ClientSampleId :



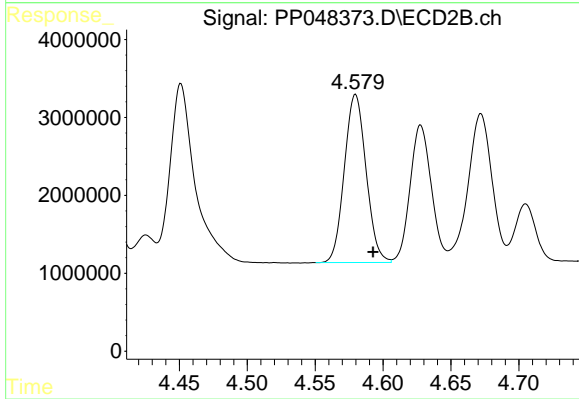
#17 AR-1242-2

R.T.: 4.393 min
 Delta R.T.: -0.013 min
 Response: 44699810
 Conc: 672.72 ng/ml



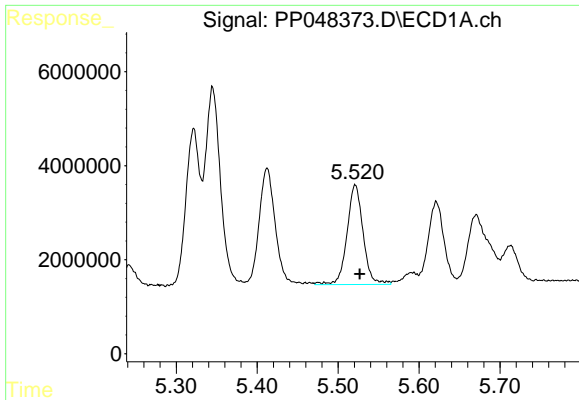
#18 AR-1242-3

R.T.: 5.412 min
 Delta R.T.: -0.005 min
 Response: 34701618
 Conc: 706.91 ng/ml



#18 AR-1242-3

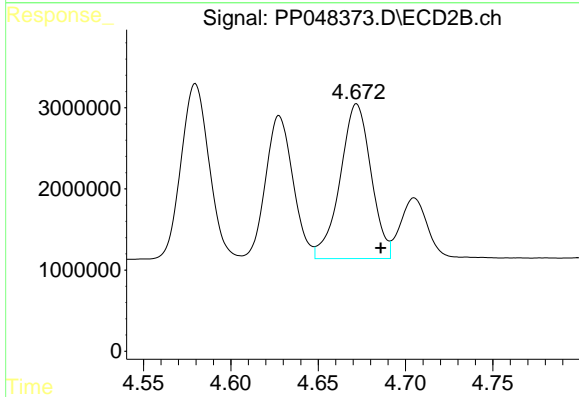
R.T.: 4.580 min
 Delta R.T.: -0.013 min
 Response: 24021858
 Conc: 692.52 ng/ml



#19 AR-1242-4

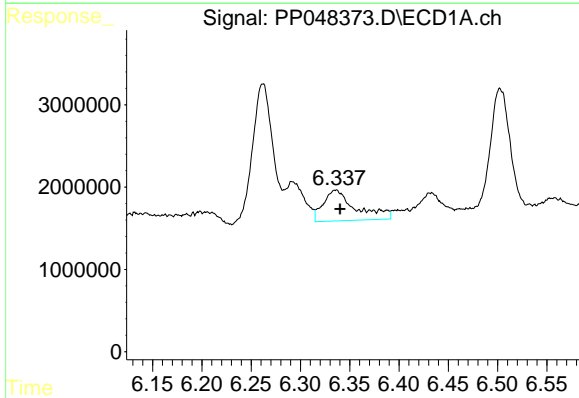
R.T.: 5.521 min
 Delta R.T.: -0.006 min
 Response: 29319276
 Conc: 740.90 ng/ml

Instrument :
 ECD_P
 ClientSampleId :



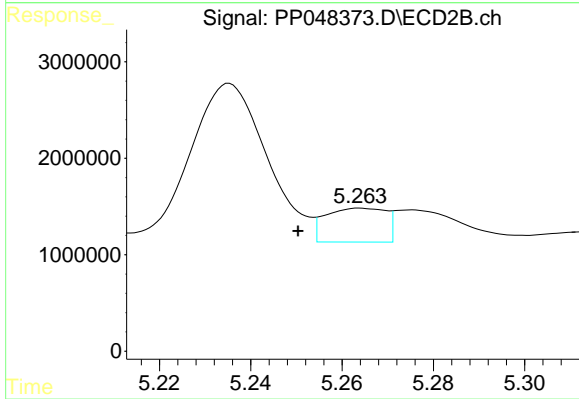
#19 AR-1242-4

R.T.: 4.672 min
 Delta R.T.: -0.014 min
 Response: 23466077
 Conc: 730.60 ng/ml



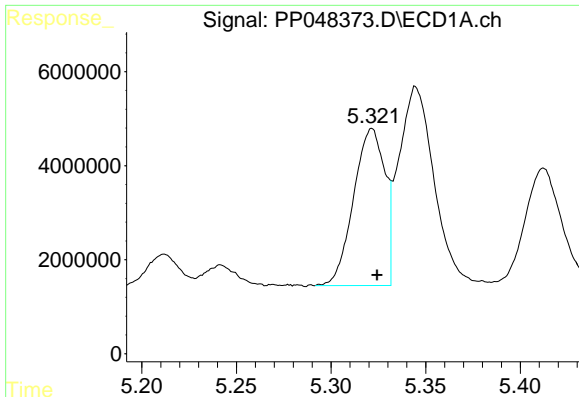
#20 AR-1242-5

R.T.: 6.336 min
 Delta R.T.: -0.005 min
 Response: 8543669
 Conc: 200.61 ng/ml



#20 AR-1242-5

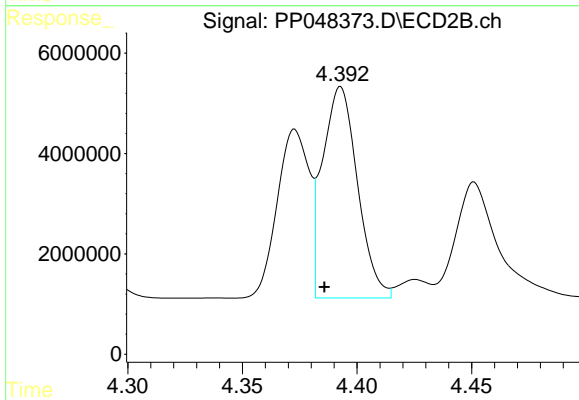
R.T.: 5.264 min
 Delta R.T.: 0.014 min
 Response: 3228563
 Conc: 77.31 ng/ml



#21 AR-1248-1

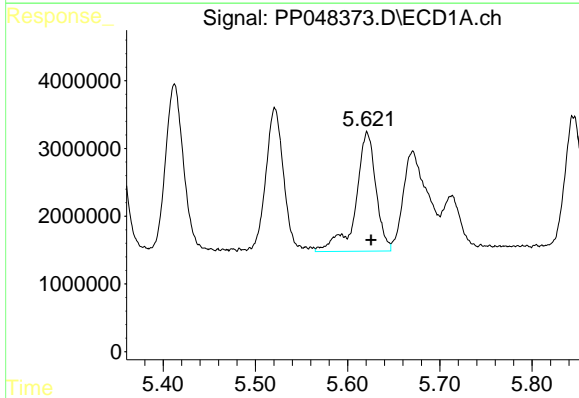
R.T.: 5.322 min
 Delta R.T.: -0.003 min
 Response: 38220301
 Conc: 886.07 ng/ml

Instrument :
 ECD_P
 ClientSampleId :



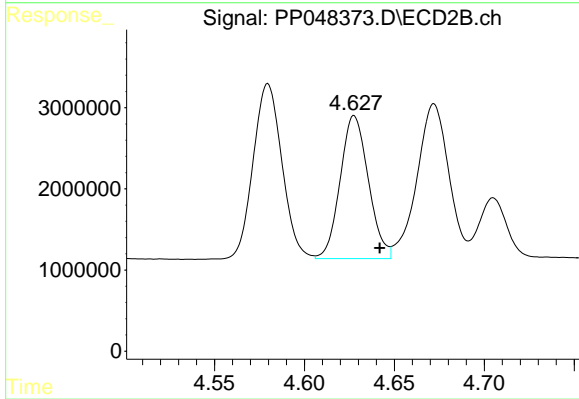
#21 AR-1248-1

R.T.: 4.393 min
 Delta R.T.: 0.007 min
 Response: 44699810
 Conc: 1221.30 ng/ml



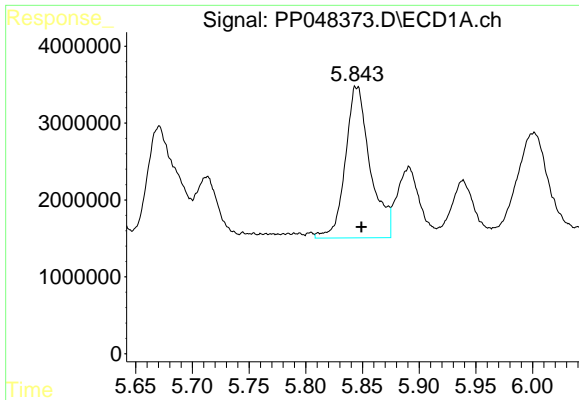
#22 AR-1248-2

R.T.: 5.621 min
 Delta R.T.: -0.004 min
 Response: 26867720
 Conc: 469.81 ng/ml



#22 AR-1248-2

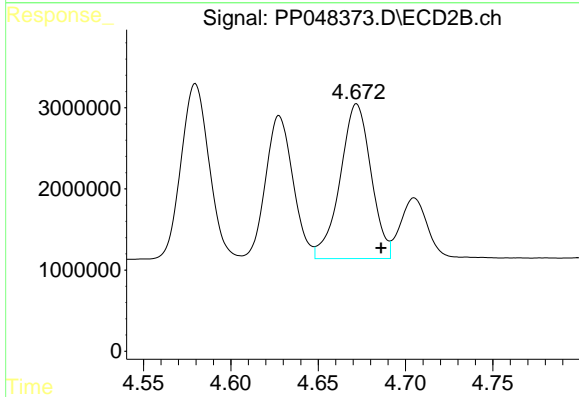
R.T.: 4.628 min
 Delta R.T.: -0.014 min
 Response: 19252774
 Conc: 404.27 ng/ml



#23 AR-1248-3

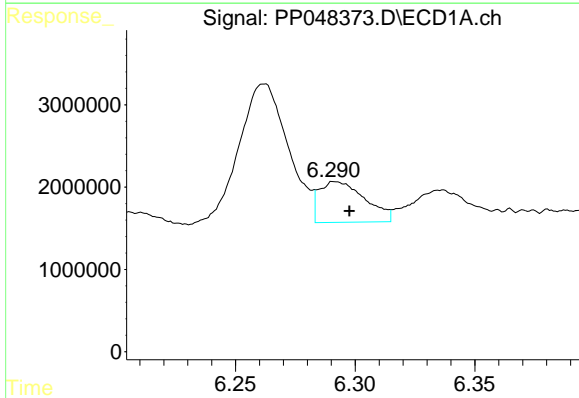
R.T.: 5.845 min
 Delta R.T.: -0.004 min
 Response: 30065949
 Conc: 444.21 ng/ml

Instrument :
 ECD_P
 ClientSampleId :



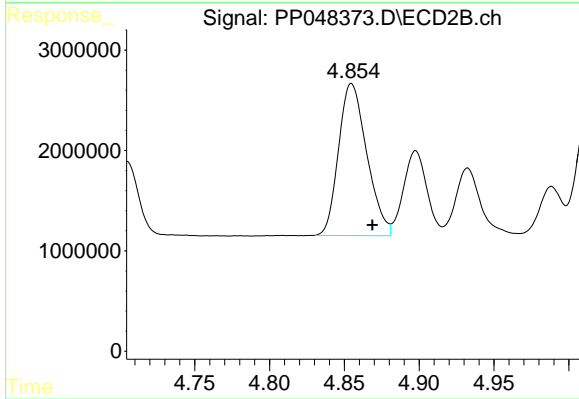
#23 AR-1248-3

R.T.: 4.672 min
 Delta R.T.: -0.014 min
 Response: 23466077
 Conc: 473.67 ng/ml



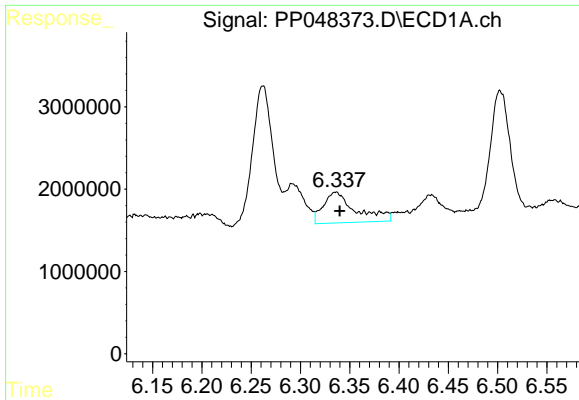
#24 AR-1248-4

R.T.: 6.293 min
 Delta R.T.: -0.005 min
 Response: 6610195
 Conc: 85.00 ng/ml



#24 AR-1248-4

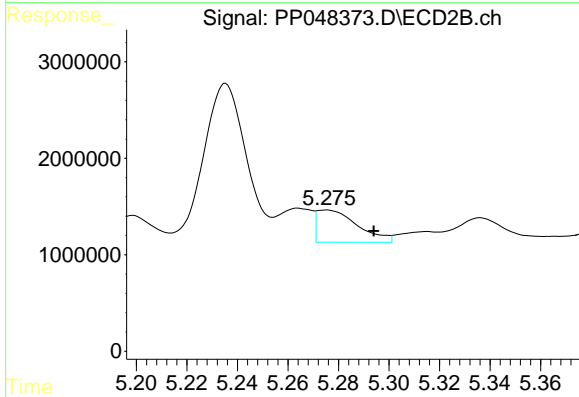
R.T.: 4.855 min
 Delta R.T.: -0.014 min
 Response: 19886871
 Conc: 341.35 ng/ml



#25 AR-1248-5

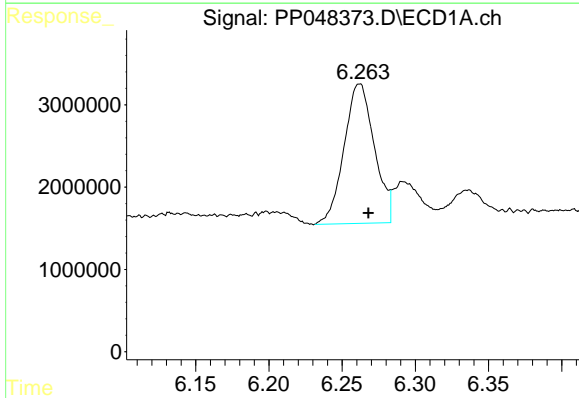
R.T.: 6.336 min
 Delta R.T.: -0.004 min
 Response: 8543669
 Conc: 112.32 ng/ml

Instrument :
 ECD_P
 ClientSampleId :



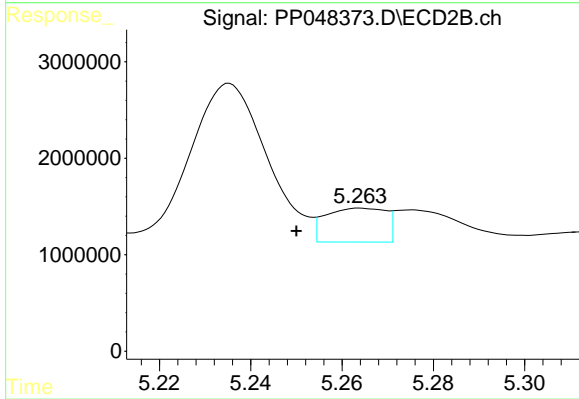
#25 AR-1248-5

R.T.: 5.275 min
 Delta R.T.: -0.019 min
 Response: 3722388
 Conc: 61.71 ng/ml



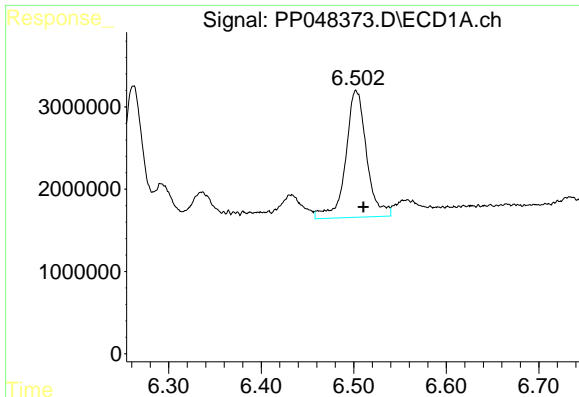
#26 AR-1254-1

R.T.: 6.262 min
 Delta R.T.: -0.006 min
 Response: 24396946
 Conc: 336.06 ng/ml



#26 AR-1254-1

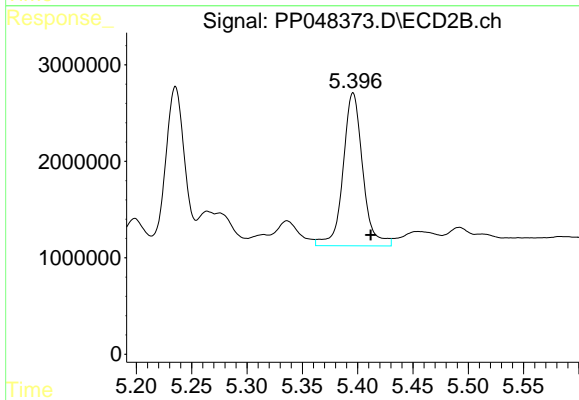
R.T.: 5.264 min
 Delta R.T.: 0.014 min
 Response: 3228563
 Conc: 36.83 ng/ml



#27 AR-1254-2

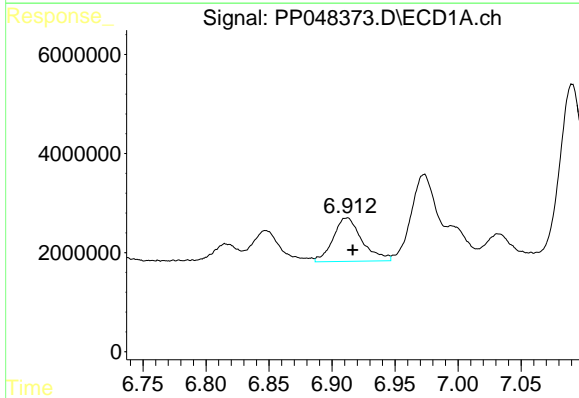
R.T.: 6.503 min
 Delta R.T.: -0.008 min
 Response: 24239369
 Conc: 203.71 ng/ml

Instrument :
 ECD_P
 ClientSampleId :



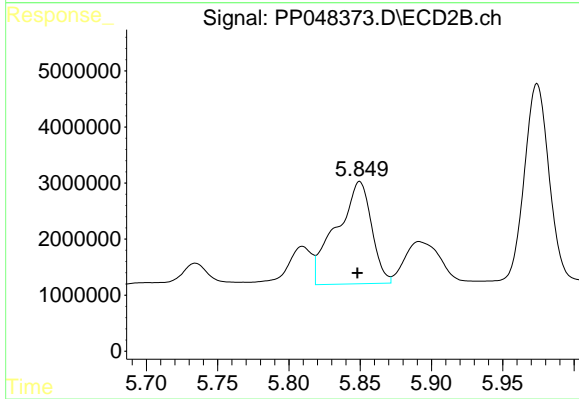
#27 AR-1254-2

R.T.: 5.396 min
 Delta R.T.: -0.016 min
 Response: 19644882
 Conc: 261.46 ng/ml



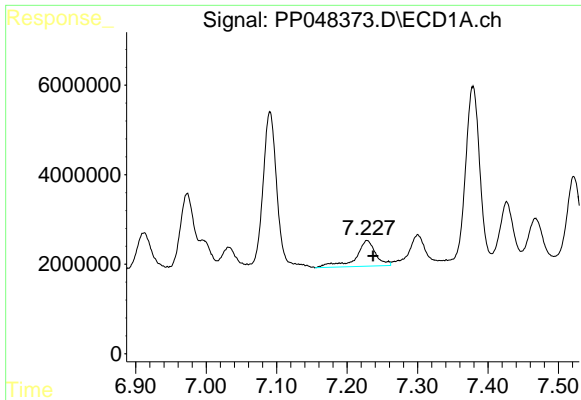
#28 AR-1254-3

R.T.: 6.912 min
 Delta R.T.: -0.005 min
 Response: 14006308
 Conc: 117.90 ng/ml



#28 AR-1254-3

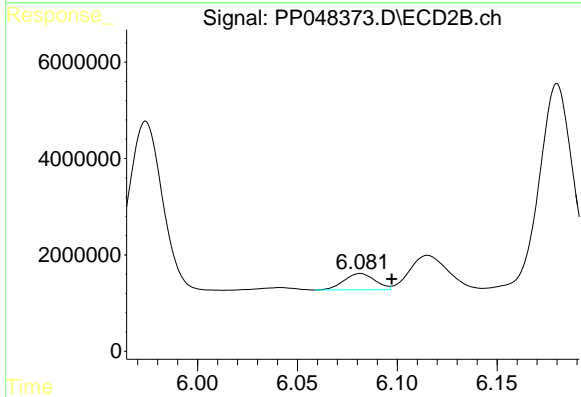
R.T.: 5.850 min
 Delta R.T.: 0.002 min
 Response: 31261896
 Conc: 254.79 ng/ml



#29 AR-1254-4

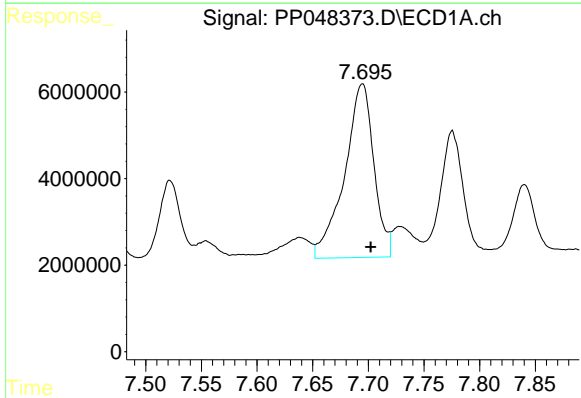
R.T.: 7.228 min
 Delta R.T.: -0.008 min
 Response: 11299880
 Conc: 125.28 ng/ml

Instrument :
 ECD_P
 ClientSampleId :



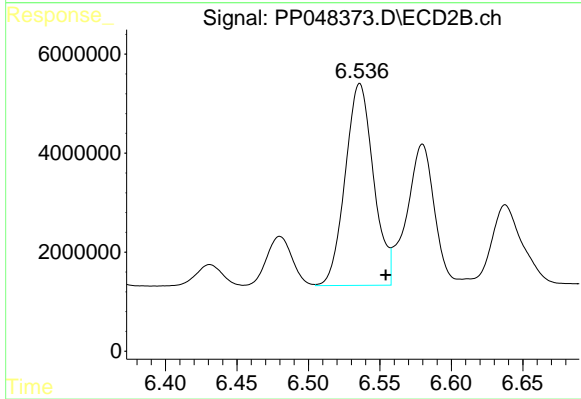
#29 AR-1254-4

R.T.: 6.082 min
 Delta R.T.: -0.016 min
 Response: 3665418
 Conc: 48.82 ng/ml



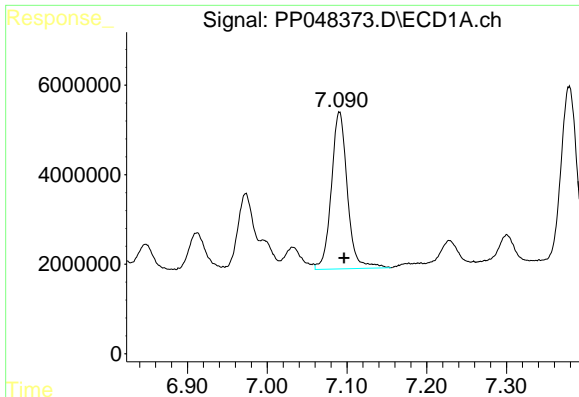
#30 AR-1254-5

R.T.: 7.694 min
 Delta R.T.: -0.008 min
 Response: 73749508
 Conc: 795.87 ng/ml



#30 AR-1254-5

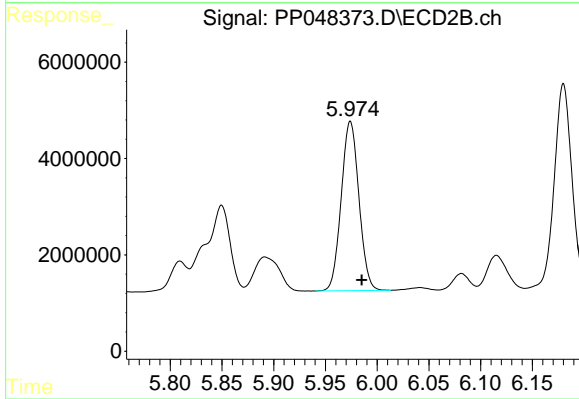
R.T.: 6.536 min
 Delta R.T.: -0.018 min
 Response: 56152203
 Conc: 554.66 ng/ml



#31 AR-1260-1

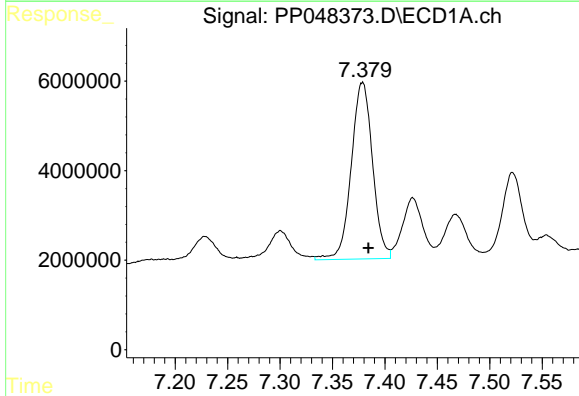
R.T.: 7.090 min
 Delta R.T.: -0.006 min
 Response: 48817557
 Conc: 523.03 ng/ml

Instrument :
 ECD_P
 ClientSampleId :



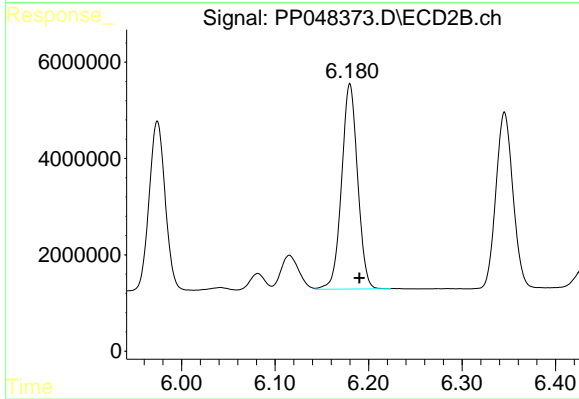
#31 AR-1260-1

R.T.: 5.974 min
 Delta R.T.: -0.011 min
 Response: 41881106
 Conc: 489.25 ng/ml



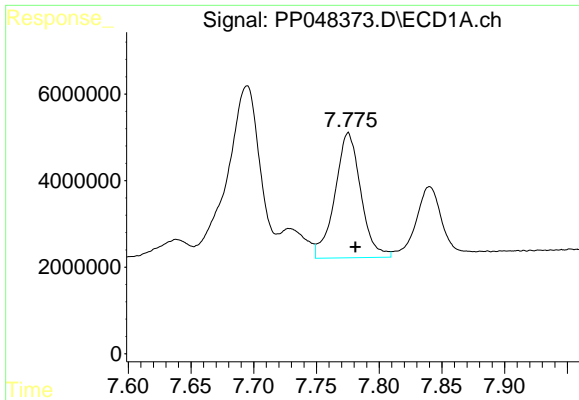
#32 AR-1260-2

R.T.: 7.379 min
 Delta R.T.: -0.006 min
 Response: 55725122
 Conc: 498.50 ng/ml



#32 AR-1260-2

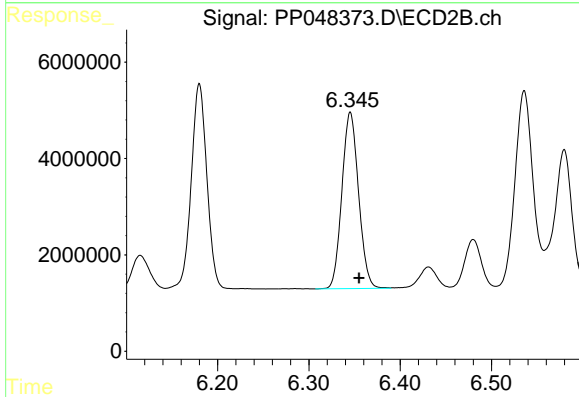
R.T.: 6.180 min
 Delta R.T.: -0.010 min
 Response: 50741369
 Conc: 492.26 ng/ml



#33 AR-1260-3

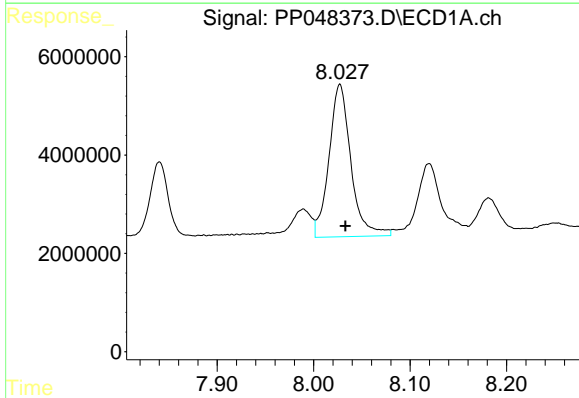
R.T.: 7.775 min
 Delta R.T.: -0.006 min
 Response: 41544965
 Conc: 485.02 ng/ml

Instrument :
 ECD_P
 ClientSampleId :



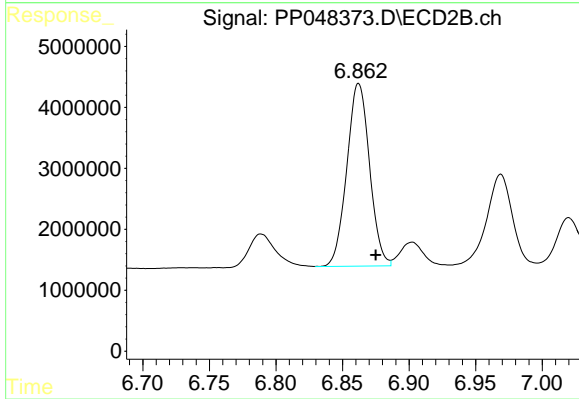
#33 AR-1260-3

R.T.: 6.345 min
 Delta R.T.: -0.010 min
 Response: 46499167
 Conc: 469.58 ng/ml



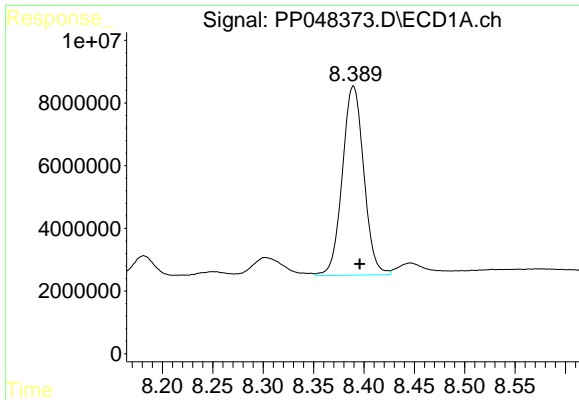
#34 AR-1260-4

R.T.: 8.027 min
 Delta R.T.: -0.006 min
 Response: 48952152
 Conc: 471.80 ng/ml



#34 AR-1260-4

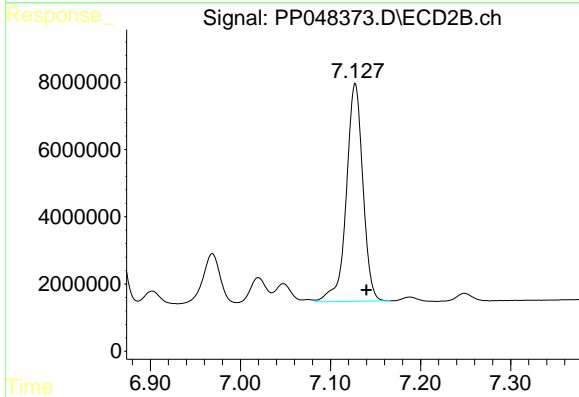
R.T.: 6.862 min
 Delta R.T.: -0.013 min
 Response: 35636466
 Conc: 428.06 ng/ml



#35 AR-1260-5

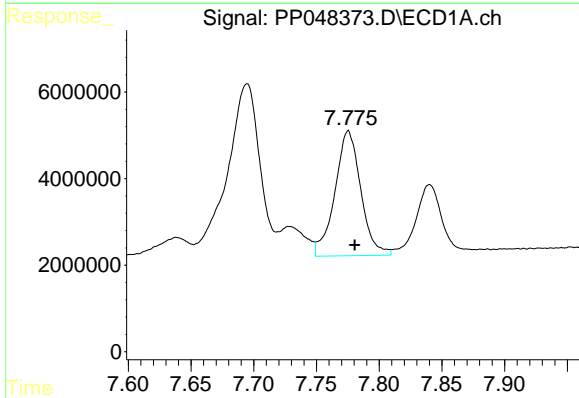
R.T.: 8.390 min
Delta R.T.: -0.006 min
Response: 89306362
Conc: 432.78 ng/ml

Instrument :
ECD_P
ClientSampleId :



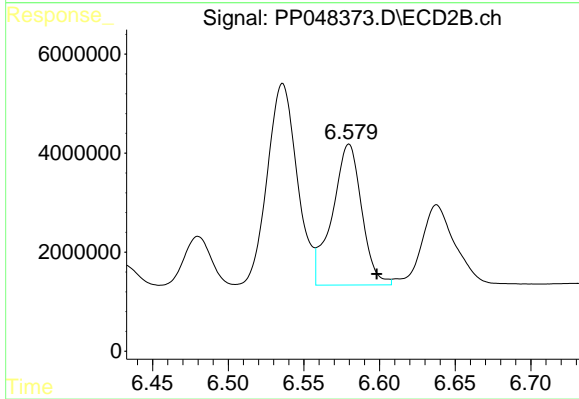
#35 AR-1260-5

R.T.: 7.128 min
Delta R.T.: -0.012 min
Response: 82529584
Conc: 415.95 ng/ml



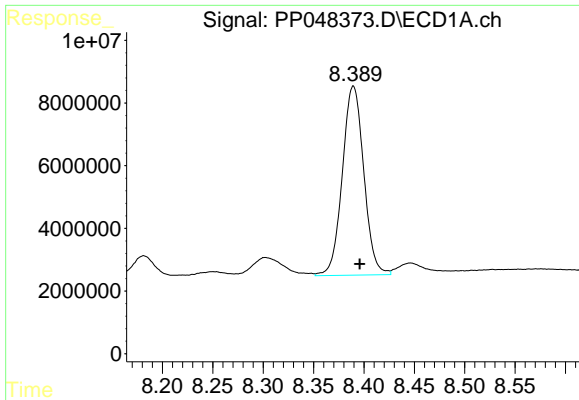
#36 AR-1262-1

R.T.: 7.775 min
Delta R.T.: -0.005 min
Response: 41544965
Conc: 364.27 ng/ml



#36 AR-1262-1

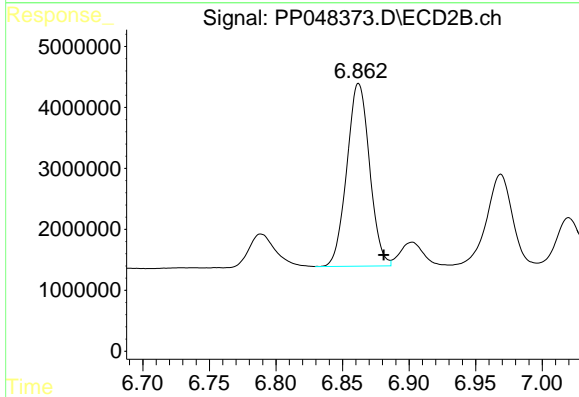
R.T.: 6.580 min
Delta R.T.: -0.018 min
Response: 38633260
Conc: 357.57 ng/ml



#37 AR-1262-2

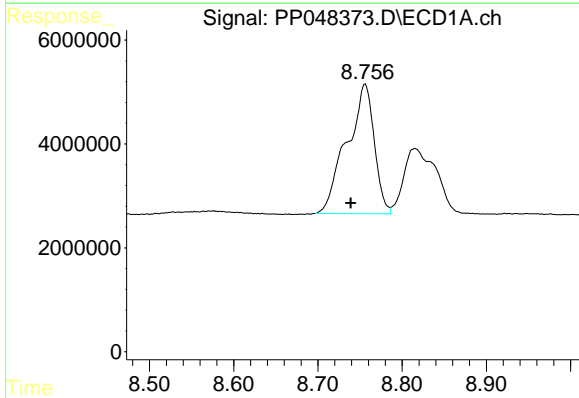
R.T.: 8.390 min
 Delta R.T.: -0.006 min
 Response: 89306362
 Conc: 418.99 ng/ml

Instrument :
 ECD_P
 ClientSampleId :



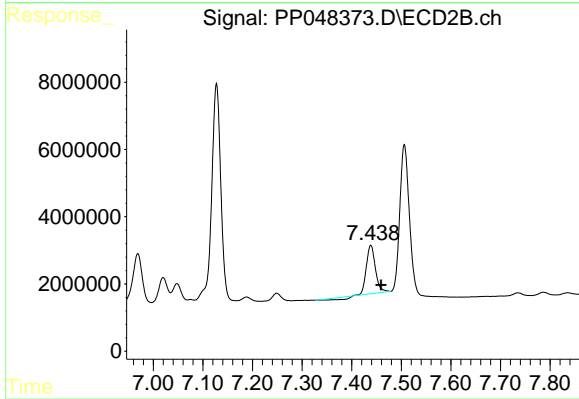
#37 AR-1262-2

R.T.: 6.862 min
 Delta R.T.: -0.019 min
 Response: 35636466
 Conc: 360.09 ng/ml



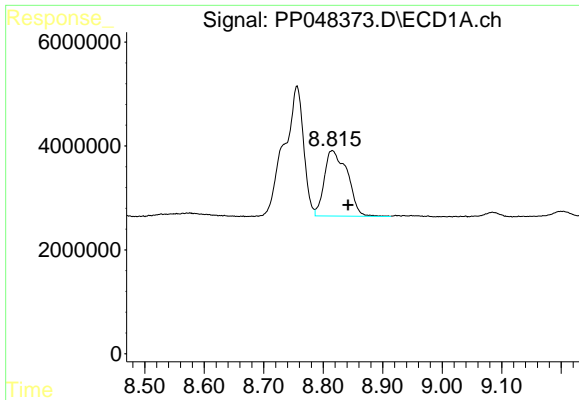
#38 AR-1262-3

R.T.: 8.756 min
 Delta R.T.: 0.017 min
 Response: 56562111
 Conc: 606.93 ng/ml



#38 AR-1262-3

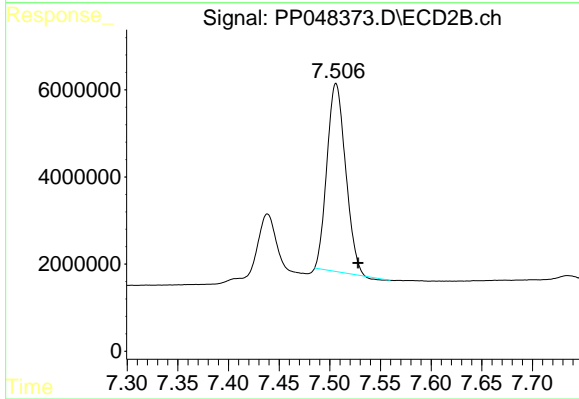
R.T.: 7.439 min
 Delta R.T.: -0.021 min
 Response: 16420269
 Conc: 218.20 ng/ml



#39 AR-1262-4

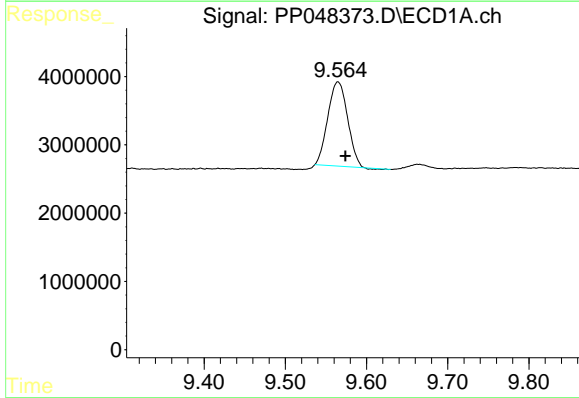
R.T.: 8.815 min
 Delta R.T.: -0.026 min
 Response: 34044204
 Conc: 572.57 ng/ml

Instrument :
 ECD_P
 ClientSampleId :



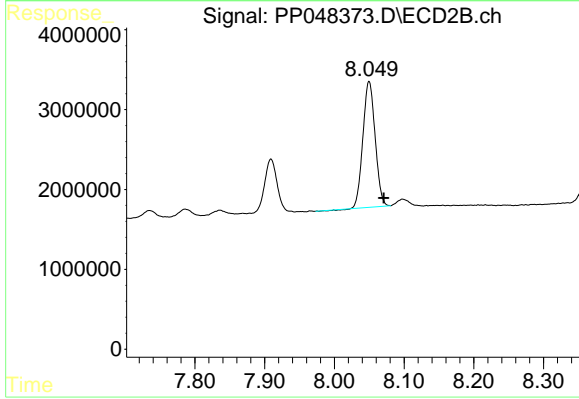
#39 AR-1262-4

R.T.: 7.506 min
 Delta R.T.: -0.022 min
 Response: 54946844
 Conc: 377.26 ng/ml



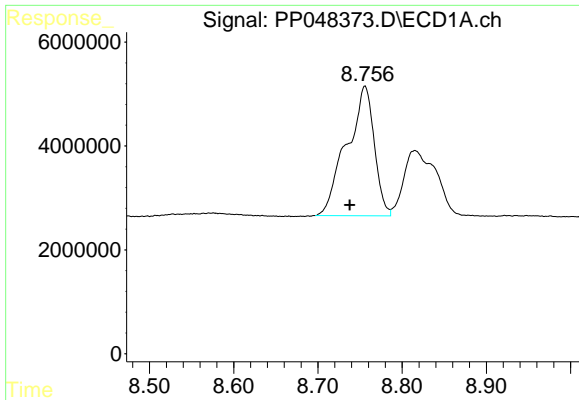
#40 AR-1262-5

R.T.: 9.565 min
 Delta R.T.: -0.009 min
 Response: 20817634
 Conc: 263.02 ng/ml



#40 AR-1262-5

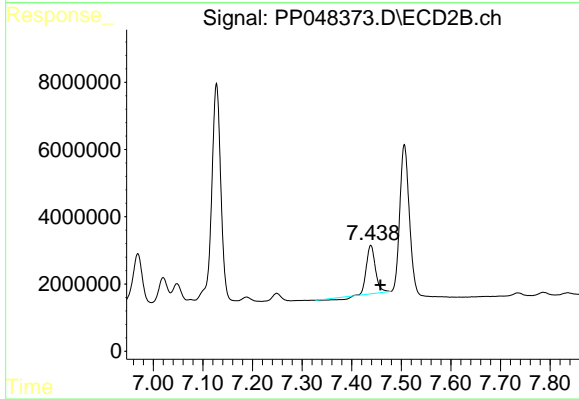
R.T.: 8.050 min
 Delta R.T.: -0.021 min
 Response: 19173664
 Conc: 284.08 ng/ml



#41 AR-1268-1

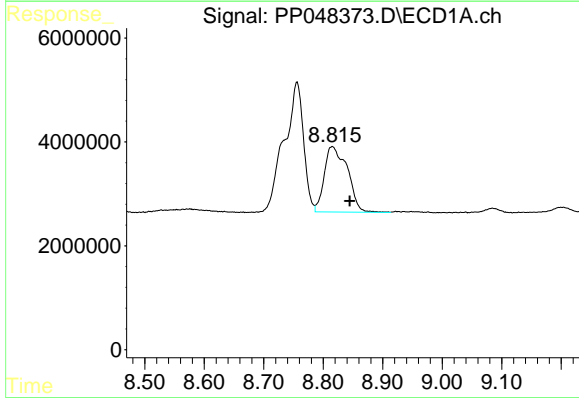
R.T.: 8.756 min
 Delta R.T.: 0.018 min
 Response: 56562111
 Conc: 213.82 ng/ml

Instrument :
 ECD_P
 ClientSampleId :



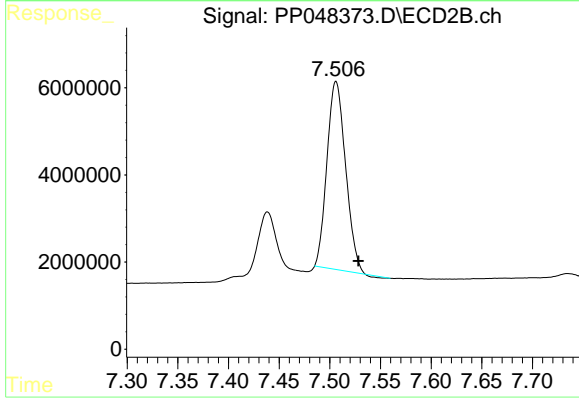
#41 AR-1268-1

R.T.: 7.439 min
 Delta R.T.: -0.020 min
 Response: 16420269
 Conc: 70.31 ng/ml



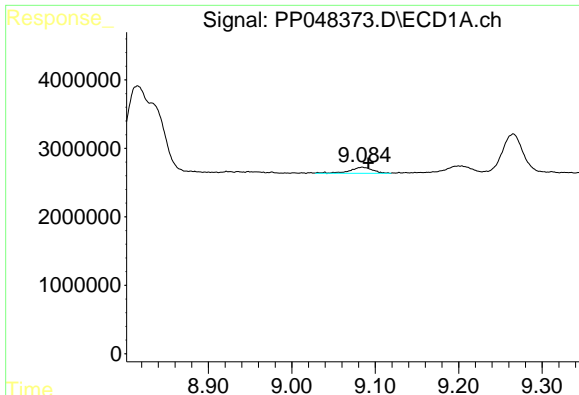
#42 AR-1268-2

R.T.: 8.815 min
 Delta R.T.: -0.030 min
 Response: 34044204
 Conc: 140.97 ng/ml



#42 AR-1268-2

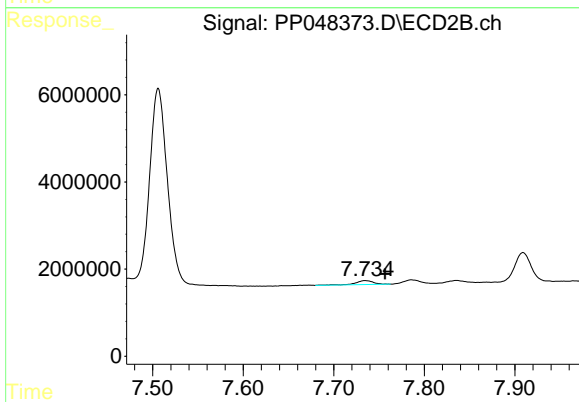
R.T.: 7.506 min
 Delta R.T.: -0.022 min
 Response: 54946844
 Conc: 253.95 ng/ml



#43 AR-1268-3

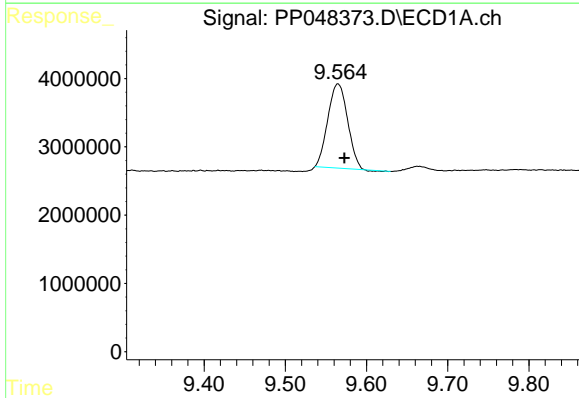
R.T.: 9.085 min
 Delta R.T.: -0.007 min
 Response: 1690023
 Conc: 8.22 ng/ml

Instrument :
 ECD_P
 ClientSampleId :



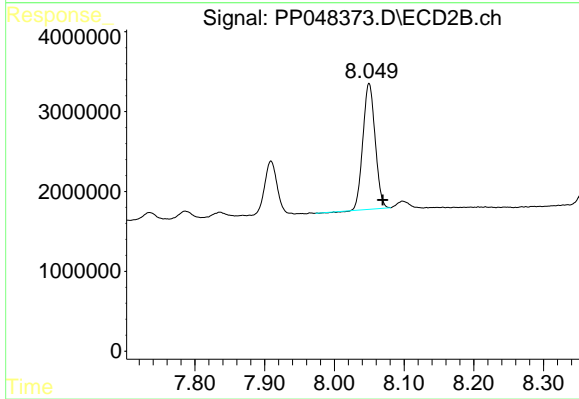
#43 AR-1268-3

R.T.: 7.735 min
 Delta R.T.: -0.022 min
 Response: 1240441
 Conc: 6.67 ng/ml



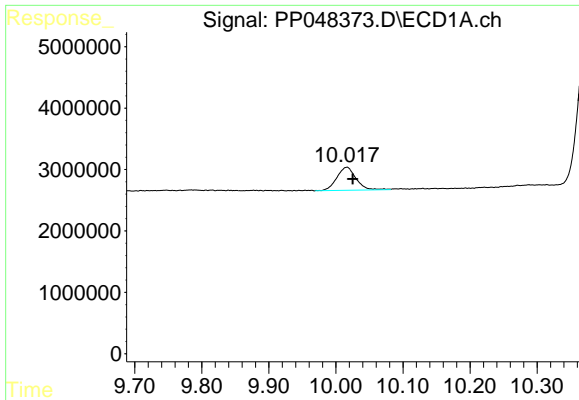
#44 AR-1268-4

R.T.: 9.565 min
 Delta R.T.: -0.008 min
 Response: 20817634
 Conc: 231.75 ng/ml



#44 AR-1268-4

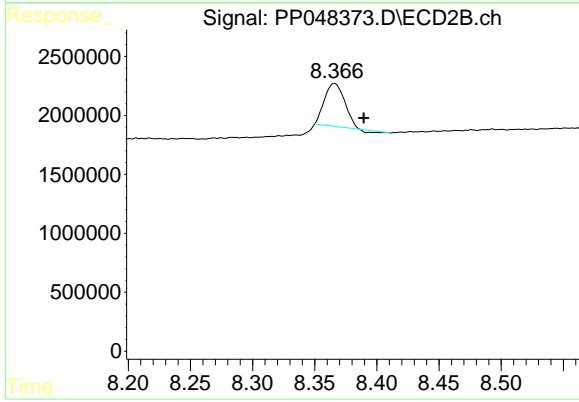
R.T.: 8.050 min
 Delta R.T.: -0.020 min
 Response: 19173664
 Conc: 233.40 ng/ml



#45 AR-1268-5

R.T.: 10.016 min
Delta R.T.: -0.009 min
Response: 7503473
Conc: 10.63 ng/ml

Instrument :
ECD_P
ClientSampleId :



#45 AR-1268-5

R.T.: 8.366 min
Delta R.T.: -0.023 min
Response: 3995592
Conc: 6.59 ng/ml