

Data Path : Z:\pestpcbsrv\HPCHEM1\ECD_P\Data\PP060222\
 Data File : PP048315.D
 Signal(s) : Signal #1: ECD1A.ch Signal #2: ECD2B.ch
 Acq On : 02 Jun 2022 12:30
 Operator : YP\AJ
 Sample : N2953-15
 Misc :
 ALS Vial : 16 Sample Multiplier: 1

Instrument :
 ECD_P
 ClientSampleId :
 P044-SS002-0006-02

Integration File signal 1: autoint1.e
 Integration File signal 2: autoint2.e
 Quant Time: Jun 03 02:19:10 2022
 Quant Method : Z:\pestpcbsrv\HPCHEM1\ECD_P\methods\PP052722.M
 Quant Title : GC EXTRACTABLES
 QLast Update : Fri May 27 23:53:39 2022
 Response via : Initial Calibration
 Integrator: ChemStation

Volume Inj. : 2 µl
 Signal #1 Phase : ZB-MR1 Signal #2 Phase: ZB-MR2
 Signal #1 Info : 30Mx0.32mmx 0.50µ Signal #2 Info : 30M x 0.32mm x 0.25µm

Compound	RT#1	RT#2	Resp#1	Resp#2	ng/ml	ng/ml

System Monitoring Compounds						
1) SA Tetrachlo...	4.034	3.215	53479607	43821903	22.837	22.236
2) SA Decachlor...	10.385	8.644	40013770	33021849	20.587	20.428
Target Compounds						
31) L7 AR-1260-1	7.093	5.976	32393243	28179716	347.059	329.189
32) L7 AR-1260-2	7.380	6.182	52976810	48496635	473.914	470.487
33) L7 AR-1260-3	7.777	6.349	46090731	21081977	538.086	212.901 #
34) L7 AR-1260-4	8.030	6.865	37463633	23612502	361.071	283.631
35) L7 AR-1260-5	8.392	7.130	70783518	64570890	343.015	325.438

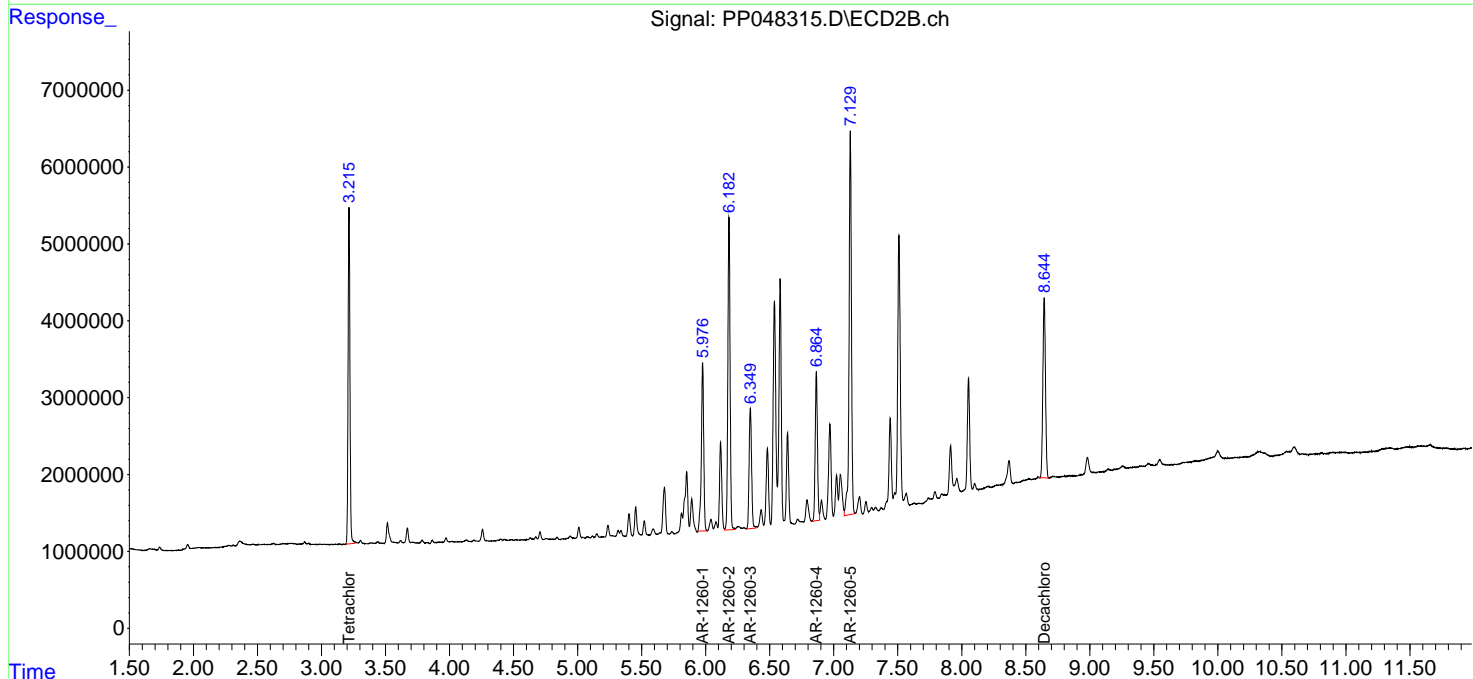
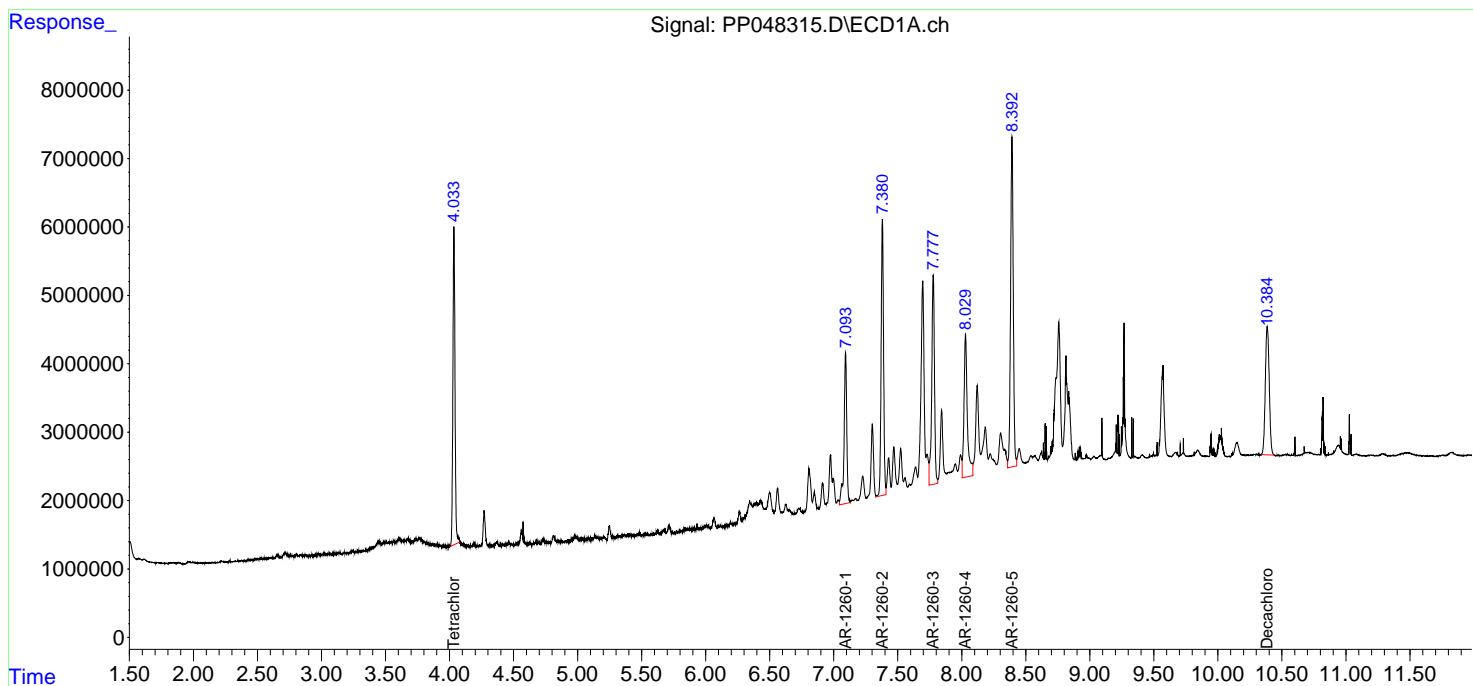
(f)=RT Delta > 1/2 Window (#)=Amounts differ by > 25% (m)=manual int.

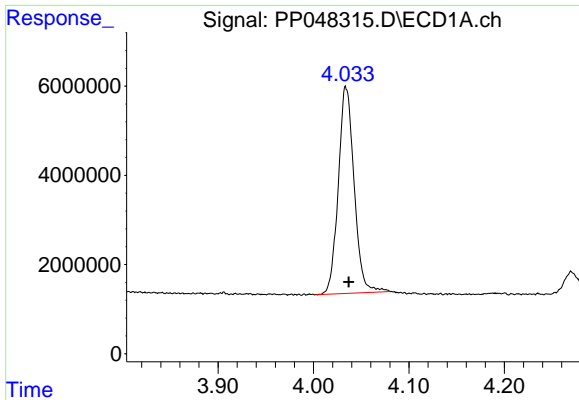
Data Path : Z:\pestpcbsrv\HPCHEM1\ECD_P\Data\PP060222\
 Data File : PP048315.D
 Signal(s) : Signal #1: ECD1A.ch Signal #2: ECD2B.ch
 Acq On : 02 Jun 2022 12:30
 Operator : YP\AJ
 Sample : N2953-15
 Misc :
 ALS Vial : 16 Sample Multiplier: 1

Instrument :
 ECD_P
 ClientSampleId :
 P044-SS002-0006-02

Integration File signal 1: autoint1.e
 Integration File signal 2: autoint2.e
 Quant Time: Jun 03 02:19:10 2022
 Quant Method : Z:\pestpcbsrv\HPCHEM1\ECD_P\methods\PP052722.M
 Quant Title : GC EXTRACTABLES
 QLast Update : Fri May 27 23:53:39 2022
 Response via : Initial Calibration
 Integrator: ChemStation

Volume Inj. : 2 µl
 Signal #1 Phase : ZB-MR1 Signal #2 Phase: ZB-MR2
 Signal #1 Info : 30Mx0.32mmx 0.50µ Signal #2 Info : 30M x 0.32mm x 0.25µm

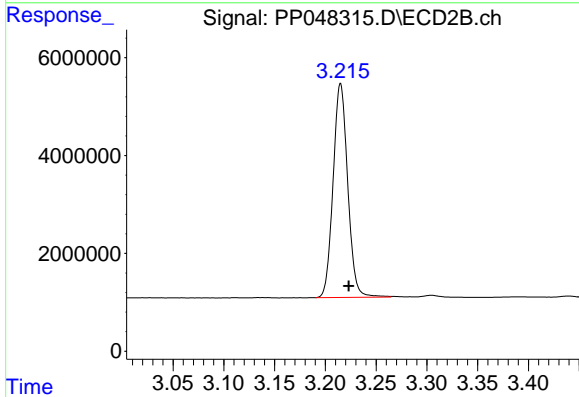




#1 Tetrachloro-m-xylene

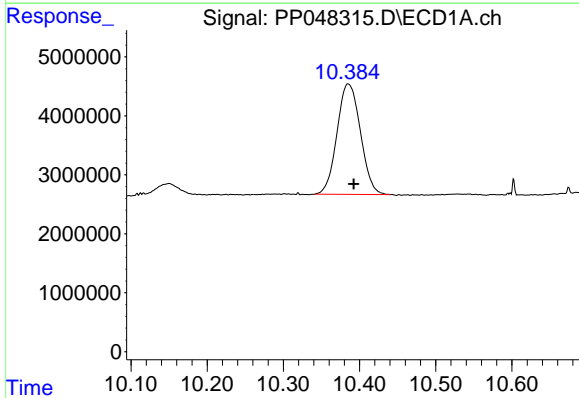
R.T.: 4.034 min
 Delta R.T.: -0.003 min
 Response: 53479607
 Conc: 22.84 ng/ml

Instrument :
 ECD_P
 ClientSampleId :
 P044-SS002-0006-02



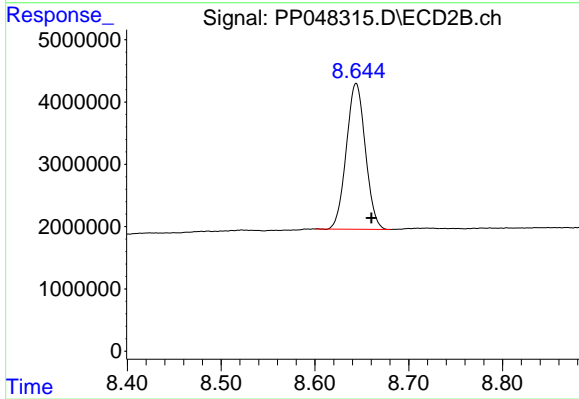
#1 Tetrachloro-m-xylene

R.T.: 3.215 min
 Delta R.T.: -0.008 min
 Response: 43821903
 Conc: 22.24 ng/ml



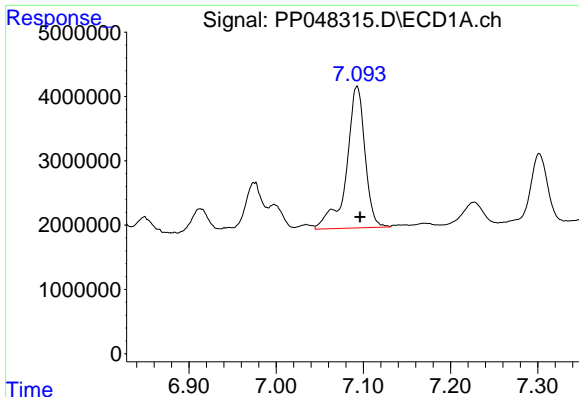
#2 Decachlorobiphenyl

R.T.: 10.385 min
 Delta R.T.: -0.007 min
 Response: 40013770
 Conc: 20.59 ng/ml



#2 Decachlorobiphenyl

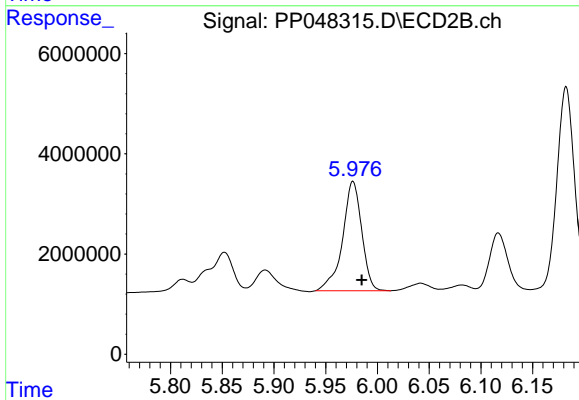
R.T.: 8.644 min
 Delta R.T.: -0.016 min
 Response: 33021849
 Conc: 20.43 ng/ml



#31 AR-1260-1

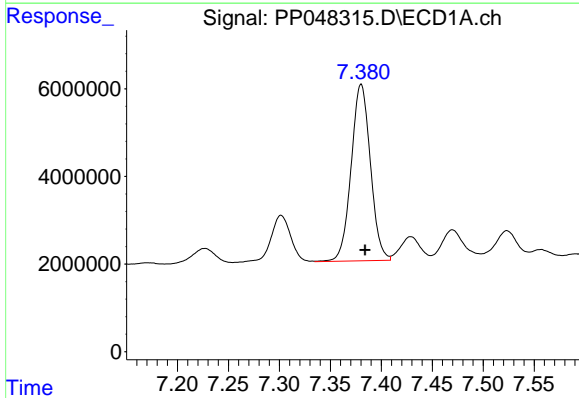
R.T.: 7.093 min
 Delta R.T.: -0.003 min
 Response: 32393243
 Conc: 347.06 ng/ml

Instrument :
 ECD_P
 ClientSampleId :
 P044-SS002-0006-02



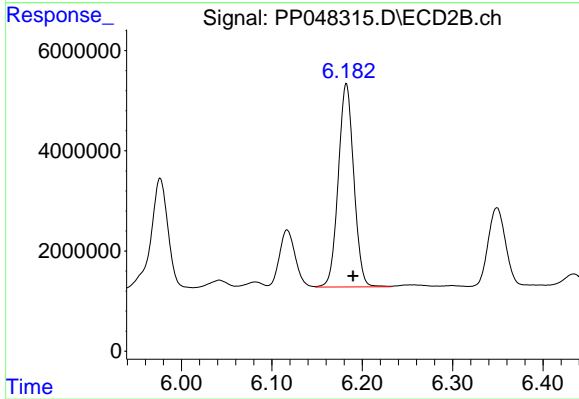
#31 AR-1260-1

R.T.: 5.976 min
 Delta R.T.: -0.009 min
 Response: 28179716
 Conc: 329.19 ng/ml



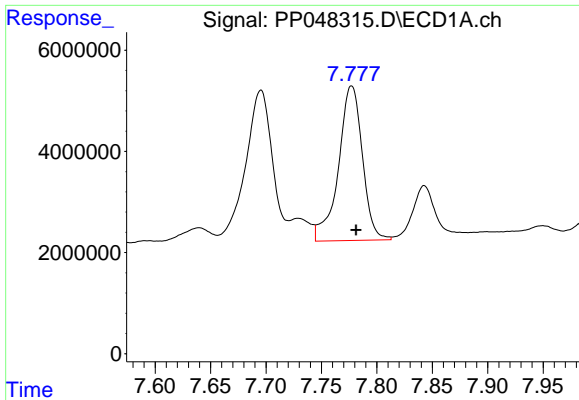
#32 AR-1260-2

R.T.: 7.380 min
 Delta R.T.: -0.004 min
 Response: 52976810
 Conc: 473.91 ng/ml



#32 AR-1260-2

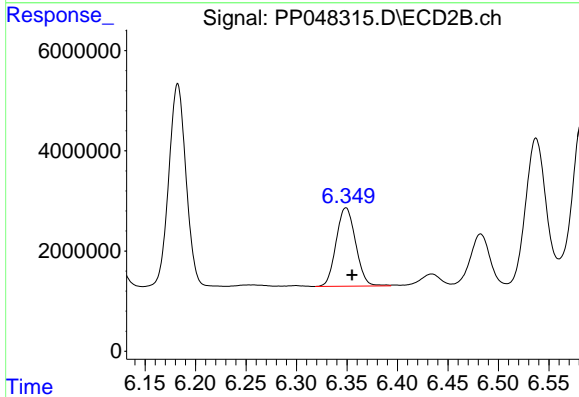
R.T.: 6.182 min
 Delta R.T.: -0.008 min
 Response: 48496635
 Conc: 470.49 ng/ml



#33 AR-1260-3

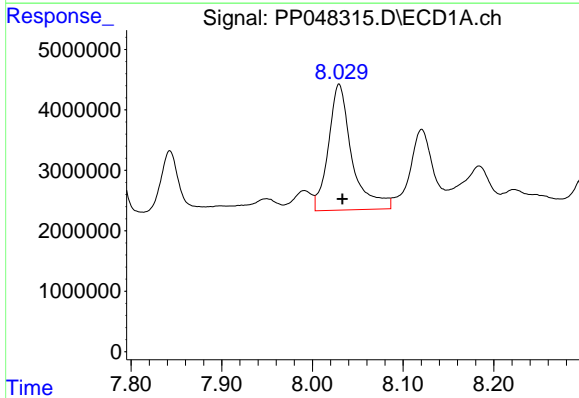
R.T.: 7.777 min
 Delta R.T.: -0.004 min
 Response: 46090731
 Conc: 538.09 ng/ml

Instrument :
 ECD_P
 ClientSampleId :
 P044-SS002-0006-02



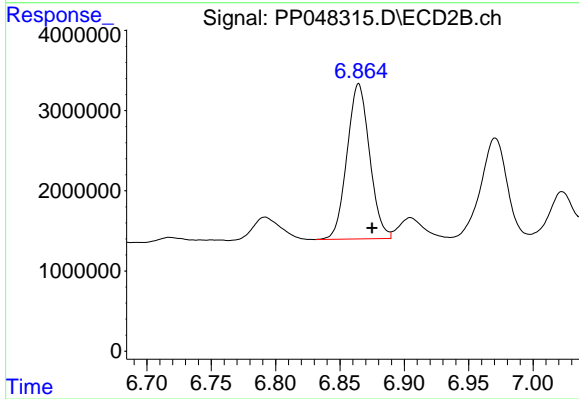
#33 AR-1260-3

R.T.: 6.349 min
 Delta R.T.: -0.006 min
 Response: 21081977
 Conc: 212.90 ng/ml



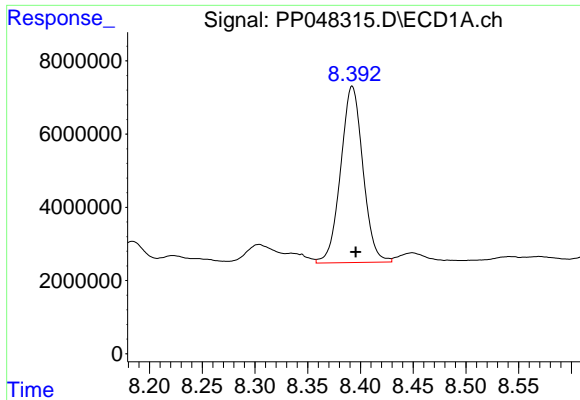
#34 AR-1260-4

R.T.: 8.030 min
 Delta R.T.: -0.004 min
 Response: 37463633
 Conc: 361.07 ng/ml



#34 AR-1260-4

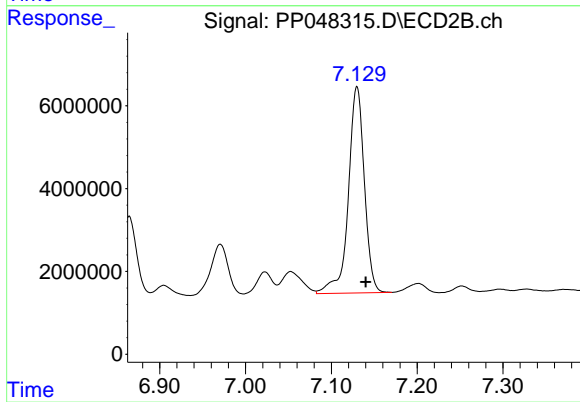
R.T.: 6.865 min
 Delta R.T.: -0.010 min
 Response: 23612502
 Conc: 283.63 ng/ml



#35 AR-1260-5

R.T.: 8.392 min
 Delta R.T.: -0.003 min
 Response: 70783518
 Conc: 343.01 ng/ml

Instrument :
 ECD_P
 ClientSampleId :
 P044-SS002-0006-02



#35 AR-1260-5

R.T.: 7.130 min
 Delta R.T.: -0.010 min
 Response: 64570890
 Conc: 325.44 ng/ml