

Data Path : Z:\pestpcbsrv\HPCHEM1\ECD\_P\Data\PP060222\  
 Data File : PP048327.D  
 Signal(s) : Signal #1: ECD1A.ch Signal #2: ECD2B.ch  
 Acq On : 02 Jun 2022 16:20  
 Operator : YP\AJ  
 Sample : N2987-01  
 Misc :  
 ALS Vial : 26 Sample Multiplier: 1

Instrument :  
 ECD\_P  
 ClientSampleId :  
 P033-SS001-0006-01

Integration File signal 1: autoint1.e  
 Integration File signal 2: autoint2.e  
 Quant Time: Jun 03 02:25:38 2022  
 Quant Method : Z:\pestpcbsrv\HPCHEM1\ECD\_P\methods\PP052722.M  
 Quant Title : GC EXTRACTABLES  
 QLast Update : Fri May 27 23:53:39 2022  
 Response via : Initial Calibration  
 Integrator: ChemStation

Volume Inj. : 2 µl  
 Signal #1 Phase : ZB-MR1 Signal #2 Phase: ZB-MR2  
 Signal #1 Info : 30Mx0.32mmx 0.50µ Signal #2 Info : 30M x 0.32mm x 0.25µm

Compound	RT#1	RT#2	Resp#1	Resp#2	ng/ml	ng/ml
-----						
System Monitoring Compounds						
1) SA Tetrachlo...	4.034	3.214	56232105	44667025	24.013	22.665
2) SA Decachlor...	10.387	8.644	45629639	35387794	23.477	21.892
Target Compounds						
31) L7 AR-1260-1	7.093	5.976	6734619	6094454	72.154	71.194
32) L7 AR-1260-2	7.380	6.182	16394104	15550855	146.656	150.866
33) L7 AR-1260-3	7.777	6.350	21666814	6760974	252.949	68.277 #
34) L7 AR-1260-4	8.030	6.864	19664820	12269104	189.528	147.376
35) L7 AR-1260-5	8.392	7.129	41614655	39819003	201.663	200.688
-----						

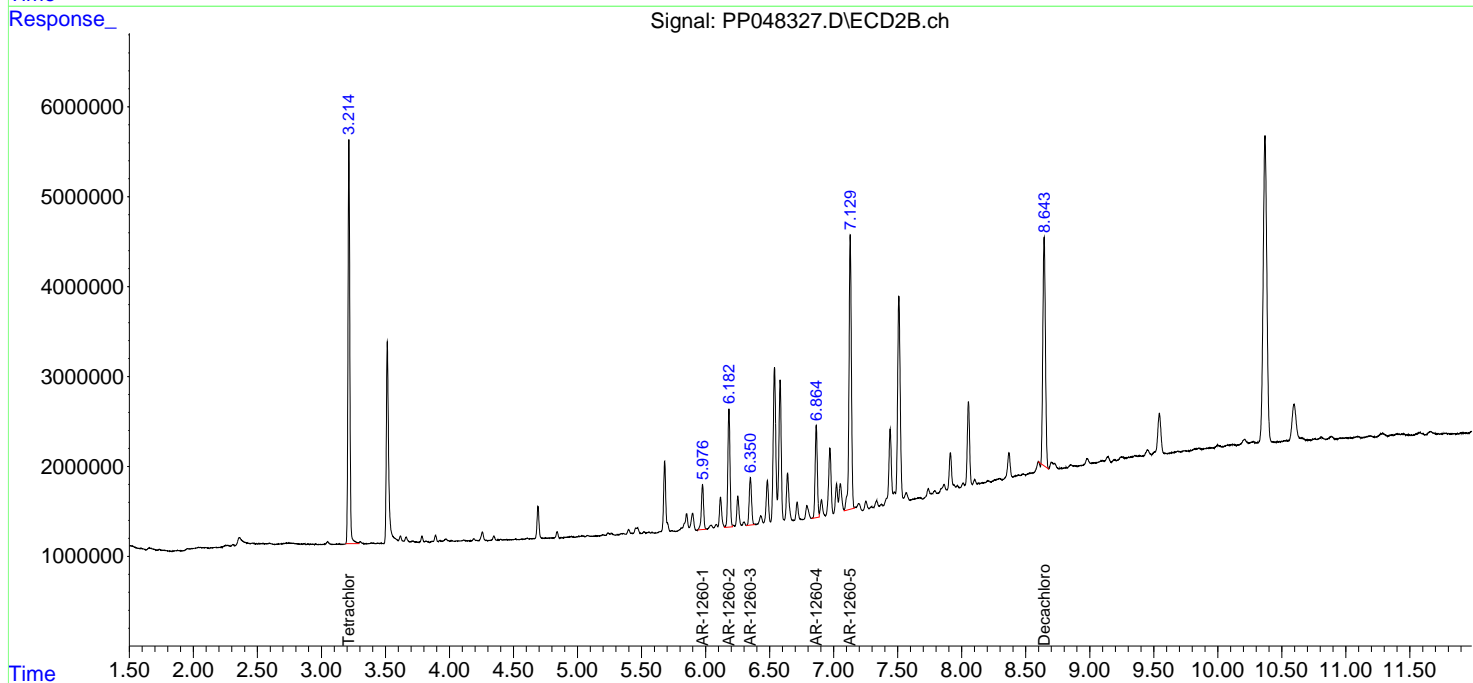
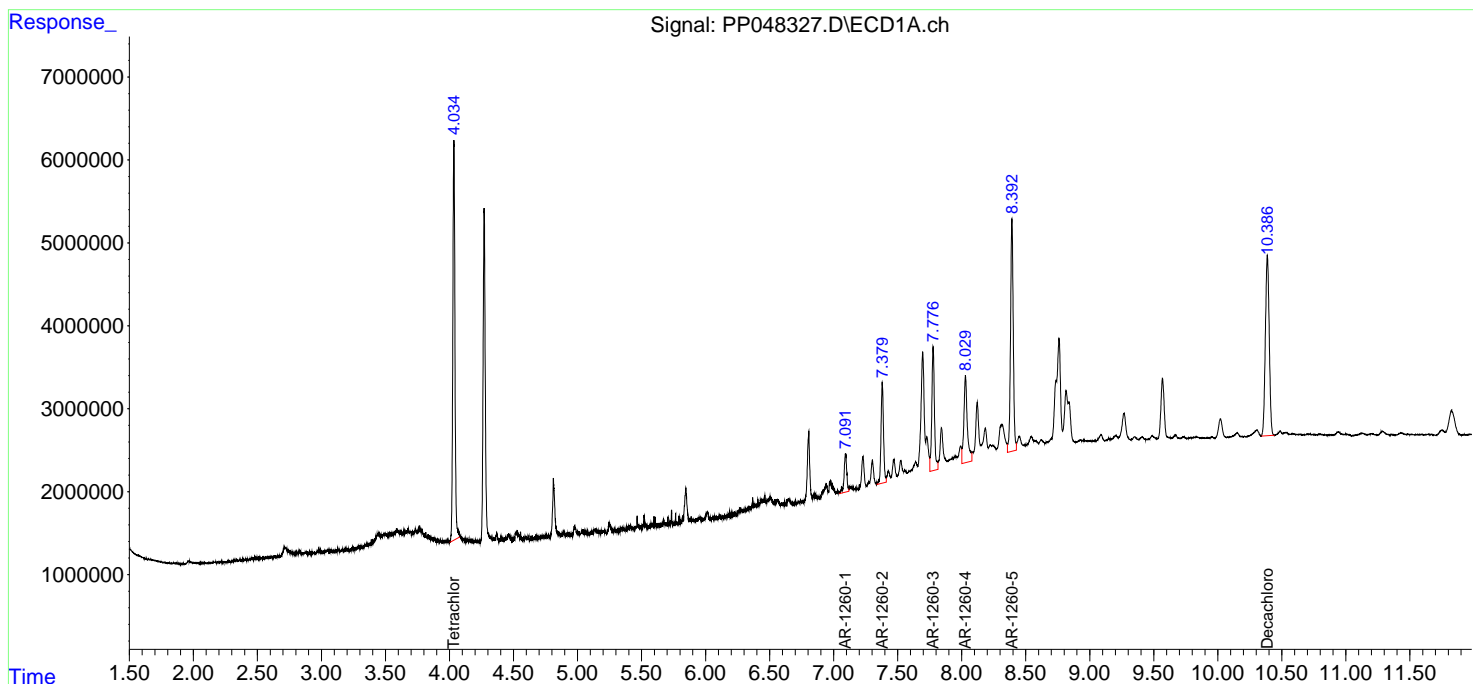
(f)=RT Delta > 1/2 Window (#)=Amounts differ by > 25% (m)=manual int.

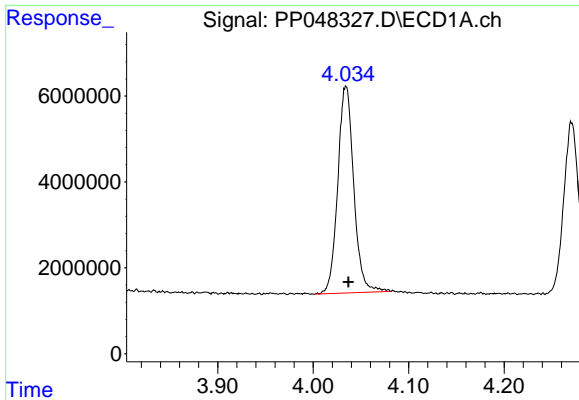
Data Path : Z:\pestpcbsrv\HPCHEM1\ECD\_P\Data\PP060222\  
 Data File : PP048327.D  
 Signal(s) : Signal #1: ECD1A.ch Signal #2: ECD2B.ch  
 Acq On : 02 Jun 2022 16:20  
 Operator : YP\AJ  
 Sample : N2987-01  
 Misc :  
 ALS Vial : 26 Sample Multiplier: 1

Instrument :  
 ECD\_P  
 ClientSampleId :  
 P033-SS001-0006-01

Integration File signal 1: autoint1.e  
 Integration File signal 2: autoint2.e  
 Quant Time: Jun 03 02:25:38 2022  
 Quant Method : Z:\pestpcbsrv\HPCHEM1\ECD\_P\methods\PP052722.M  
 Quant Title : GC EXTRACTABLES  
 QLast Update : Fri May 27 23:53:39 2022  
 Response via : Initial Calibration  
 Integrator: ChemStation

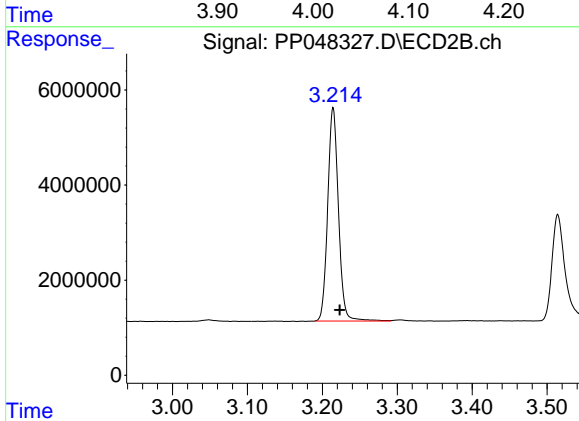
Volume Inj. : 2 µl  
 Signal #1 Phase : ZB-MR1 Signal #2 Phase: ZB-MR2  
 Signal #1 Info : 30Mx0.32mmx 0.50µ Signal #2 Info : 30M x 0.32mm x 0.25µm



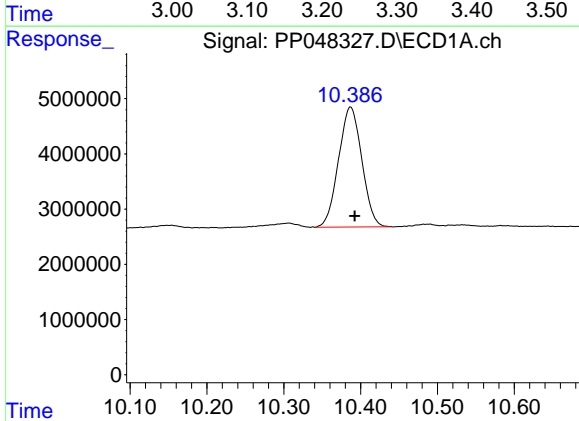


#1 Tetrachloro-m-xylene  
 R.T.: 4.034 min  
 Delta R.T.: -0.003 min  
 Response: 56232105  
 Conc: 24.01 ng/ml

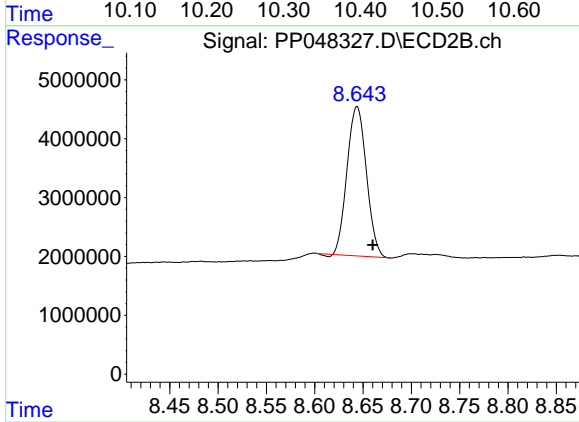
Instrument :  
 ECD\_P  
 ClientSampleId :  
 P033-SS001-0006-01



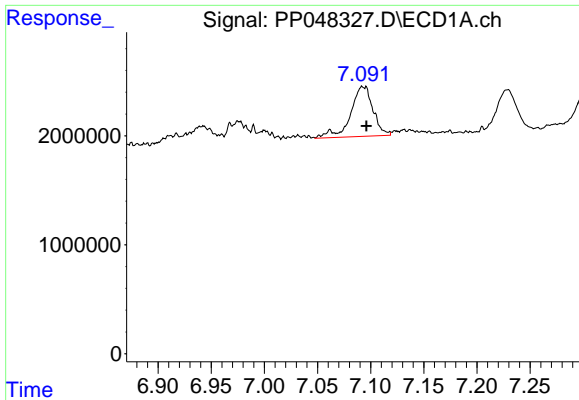
#1 Tetrachloro-m-xylene  
 R.T.: 3.214 min  
 Delta R.T.: -0.009 min  
 Response: 44667025  
 Conc: 22.66 ng/ml



#2 Decachlorobiphenyl  
 R.T.: 10.387 min  
 Delta R.T.: -0.006 min  
 Response: 45629639  
 Conc: 23.48 ng/ml



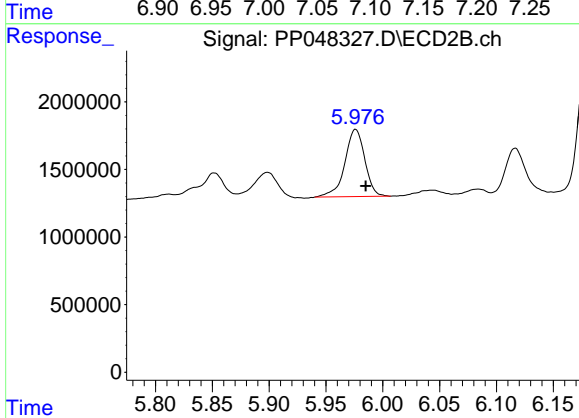
#2 Decachlorobiphenyl  
 R.T.: 8.644 min  
 Delta R.T.: -0.016 min  
 Response: 35387794  
 Conc: 21.89 ng/ml



#31 AR-1260-1

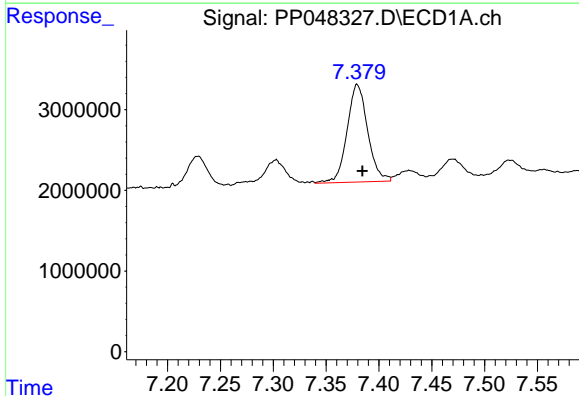
R.T.: 7.093 min  
 Delta R.T.: -0.003 min  
 Response: 6734619  
 Conc: 72.15 ng/ml

Instrument :  
 ECD\_P  
 ClientSampleId :  
 P033-SS001-0006-01



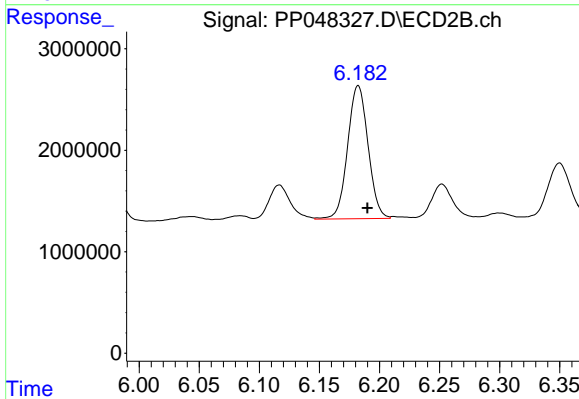
#31 AR-1260-1

R.T.: 5.976 min  
 Delta R.T.: -0.009 min  
 Response: 6094454  
 Conc: 71.19 ng/ml



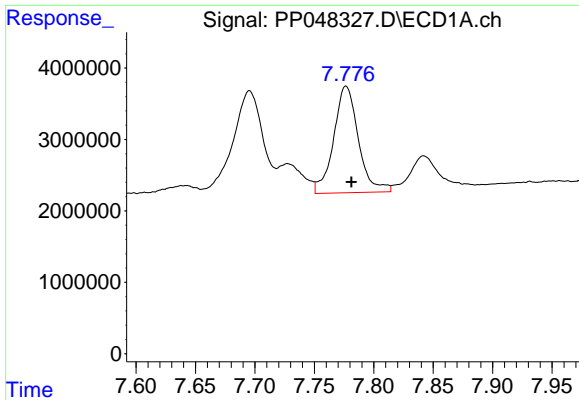
#32 AR-1260-2

R.T.: 7.380 min  
 Delta R.T.: -0.004 min  
 Response: 16394104  
 Conc: 146.66 ng/ml



#32 AR-1260-2

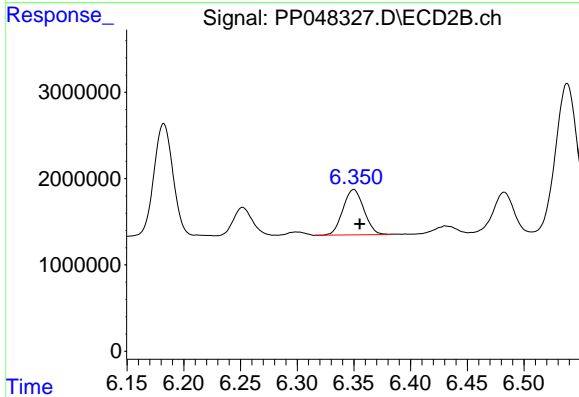
R.T.: 6.182 min  
 Delta R.T.: -0.008 min  
 Response: 15550855  
 Conc: 150.87 ng/ml



#33 AR-1260-3

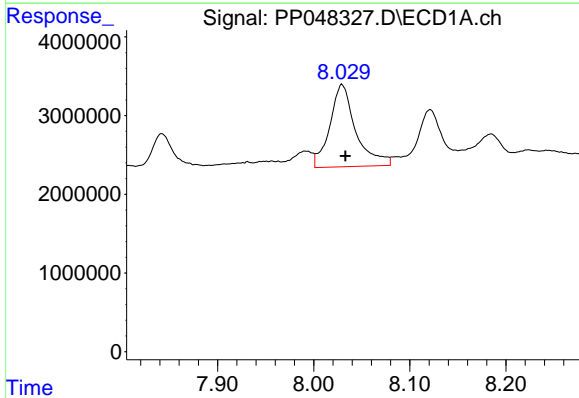
R.T.: 7.777 min  
 Delta R.T.: -0.004 min  
 Response: 21666814  
 Conc: 252.95 ng/ml

Instrument :  
 ECD\_P  
 ClientSampleId :  
 P033-SS001-0006-01



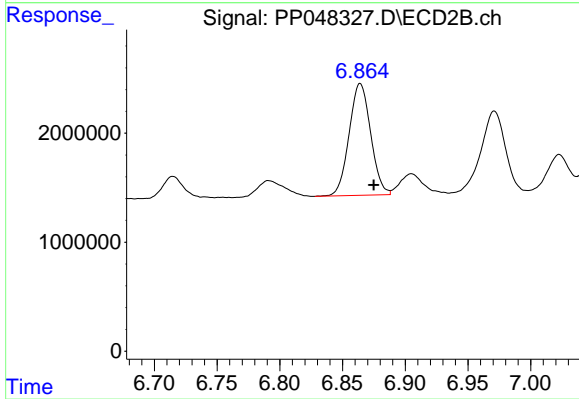
#33 AR-1260-3

R.T.: 6.350 min  
 Delta R.T.: -0.005 min  
 Response: 6760974  
 Conc: 68.28 ng/ml



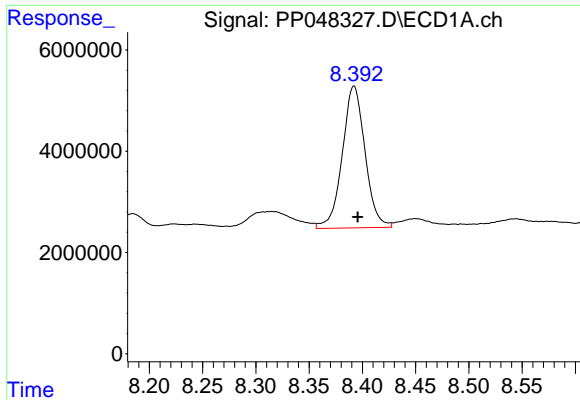
#34 AR-1260-4

R.T.: 8.030 min  
 Delta R.T.: -0.004 min  
 Response: 19664820  
 Conc: 189.53 ng/ml



#34 AR-1260-4

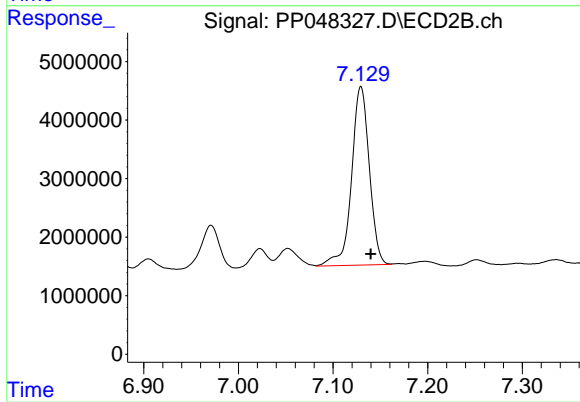
R.T.: 6.864 min  
 Delta R.T.: -0.011 min  
 Response: 12269104  
 Conc: 147.38 ng/ml



#35 AR-1260-5

R.T.: 8.392 min  
Delta R.T.: -0.004 min  
Response: 41614655  
Conc: 201.66 ng/ml

Instrument :  
ECD\_P  
ClientSampleId :  
P033-SS001-0006-01



#35 AR-1260-5

R.T.: 7.129 min  
Delta R.T.: -0.011 min  
Response: 39819003  
Conc: 200.69 ng/ml