

Data Path : Z:\pestpcbsrv\HPCHEM1\ECD_P\Data\PP060222\
 Data File : PP048356.D
 Signal(s) : Signal #1: ECD1A.ch Signal #2: ECD2B.ch
 Acq On : 03 Jun 2022 00:27
 Operator : YP\AJ
 Sample : N2989-08
 Misc :
 ALS Vial : 53 Sample Multiplier: 1

Instrument :
 ECD_P
 ClientSampleId :
 P015-SS007-1824-01

Integration File signal 1: autoint1.e
 Integration File signal 2: autoint2.e
 Quant Time: Jun 03 02:41:27 2022
 Quant Method : Z:\pestpcbsrv\HPCHEM1\ECD_P\methods\PP052722.M
 Quant Title : GC EXTRACTABLES
 QLast Update : Fri May 27 23:53:39 2022
 Response via : Initial Calibration
 Integrator: ChemStation

Volume Inj. : 2 µl
 Signal #1 Phase : ZB-MR1 Signal #2 Phase: ZB-MR2
 Signal #1 Info : 30Mx0.32mmx 0.50µ Signal #2 Info : 30M x 0.32mm x 0.25µm

Compound	RT#1	RT#2	Resp#1	Resp#2	ng/ml	ng/ml

System Monitoring Compounds						
1) SA Tetrachlo...	4.034	3.214	48074111	38241751	20.529	19.404
2) SA Decachlor...	10.385	8.642	27386442	23165568	14.090	14.331
Target Compounds						
31) L7 AR-1260-1	7.092	5.975	3667267	2888969	39.291	33.748
32) L7 AR-1260-2	7.380	6.181	12731634	11661866	113.893	113.137
33) L7 AR-1260-3	7.777	6.348	25275966	7527195	295.084	76.015 #
34) L7 AR-1260-4	8.030	6.862	20955465	13973432	201.967	167.848
35) L7 AR-1260-5	8.392	7.128	42825649	41960828	207.532	211.483

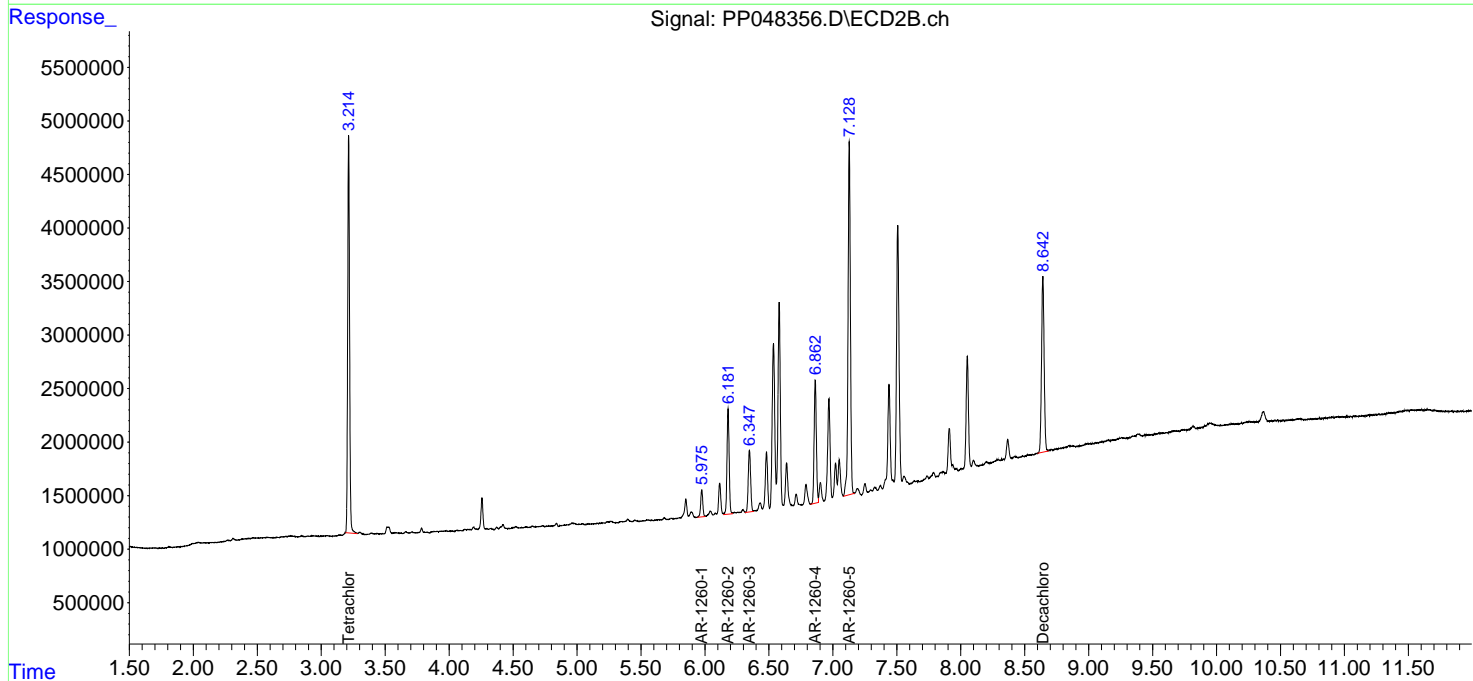
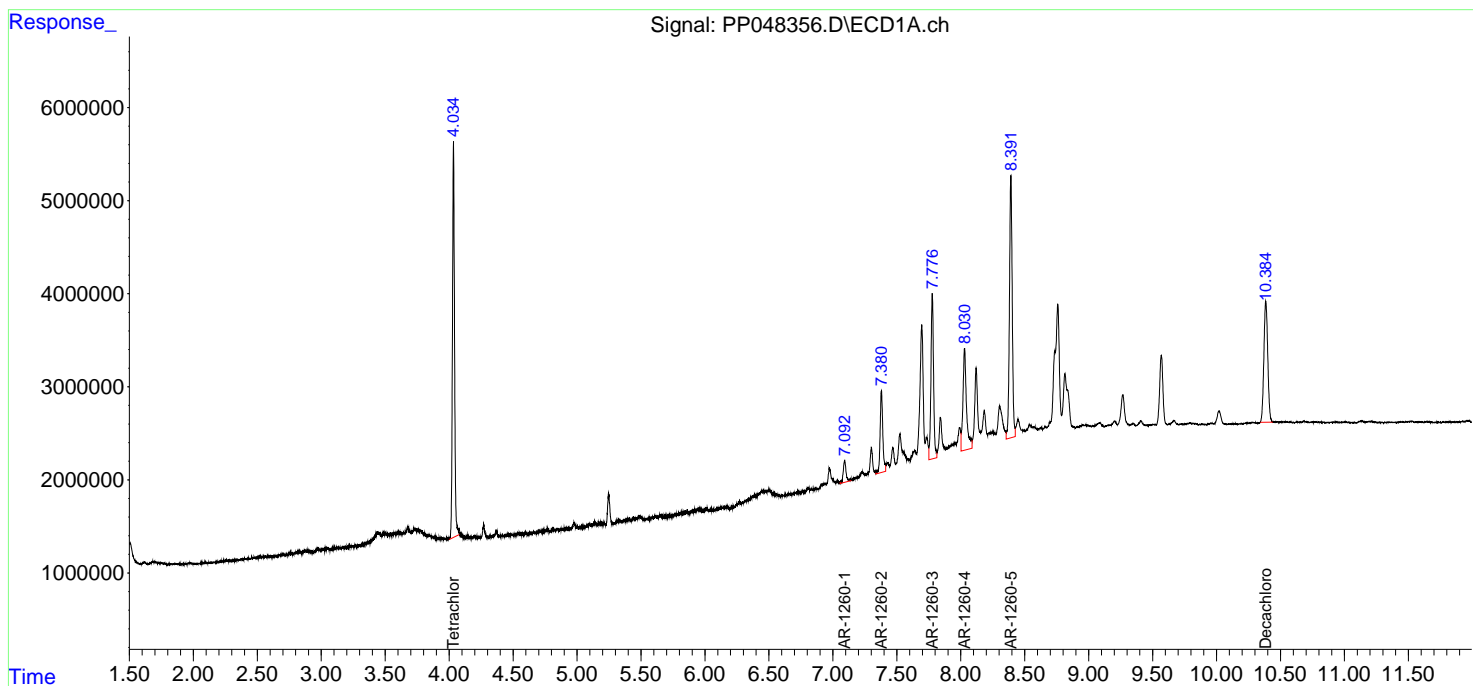
(f)=RT Delta > 1/2 Window (#)=Amounts differ by > 25% (m)=manual int.

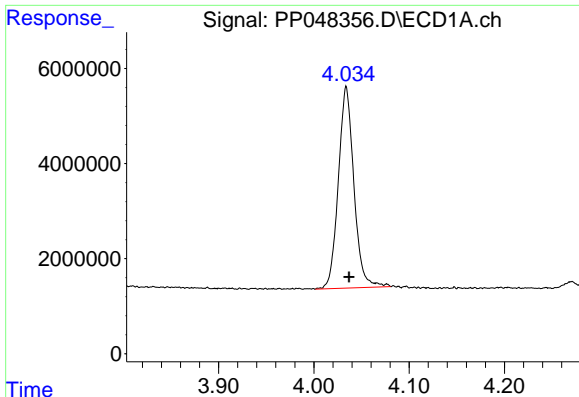
Data Path : Z:\pestpcbsrv\HPCHEM1\ECD_P\Data\PP060222\
 Data File : PP048356.D
 Signal(s) : Signal #1: ECD1A.ch Signal #2: ECD2B.ch
 Acq On : 03 Jun 2022 00:27
 Operator : YP\AJ
 Sample : N2989-08
 Misc :
 ALS Vial : 53 Sample Multiplier: 1

Instrument :
 ECD_P
 ClientSampleId :
 P015-SS007-1824-01

Integration File signal 1: autoint1.e
 Integration File signal 2: autoint2.e
 Quant Time: Jun 03 02:41:27 2022
 Quant Method : Z:\pestpcbsrv\HPCHEM1\ECD_P\methods\PP052722.M
 Quant Title : GC EXTRACTABLES
 QLast Update : Fri May 27 23:53:39 2022
 Response via : Initial Calibration
 Integrator: ChemStation

Volume Inj. : 2 µl
 Signal #1 Phase : ZB-MR1 Signal #2 Phase: ZB-MR2
 Signal #1 Info : 30Mx0.32mmx 0.50µ Signal #2 Info : 30M x 0.32mm x 0.25µm

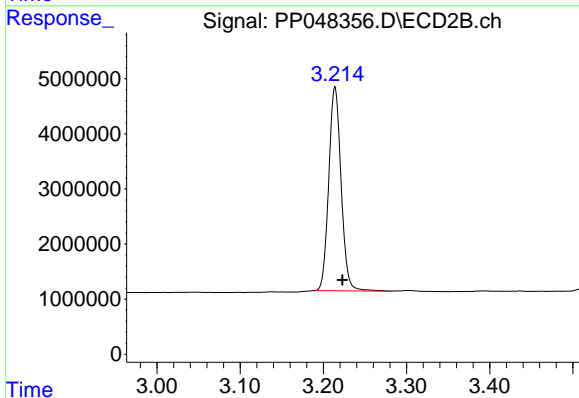




#1 Tetrachloro-m-xylene

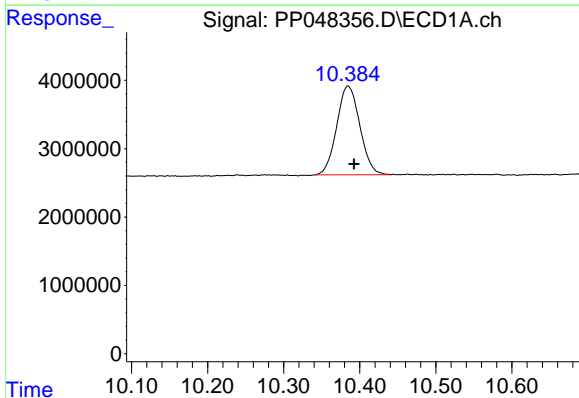
R.T.: 4.034 min
 Delta R.T.: -0.003 min
 Response: 48074111
 Conc: 20.53 ng/ml

Instrument :
 ECD_P
 ClientSampleId :
 P015-SS007-1824-01



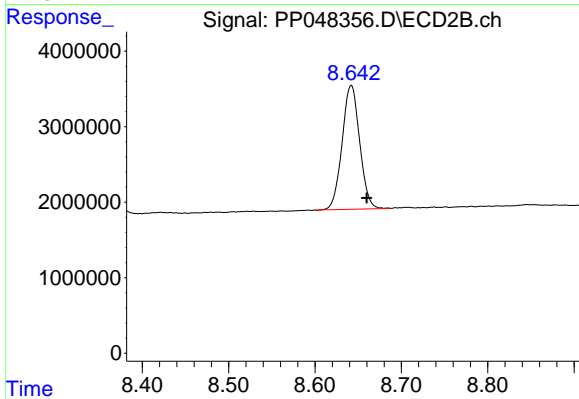
#1 Tetrachloro-m-xylene

R.T.: 3.214 min
 Delta R.T.: -0.009 min
 Response: 38241751
 Conc: 19.40 ng/ml



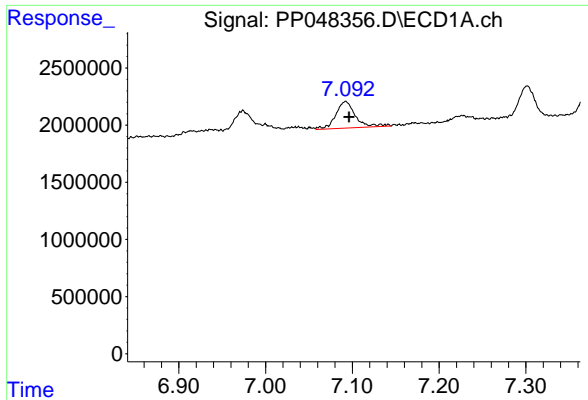
#2 Decachlorobiphenyl

R.T.: 10.385 min
 Delta R.T.: -0.008 min
 Response: 27386442
 Conc: 14.09 ng/ml



#2 Decachlorobiphenyl

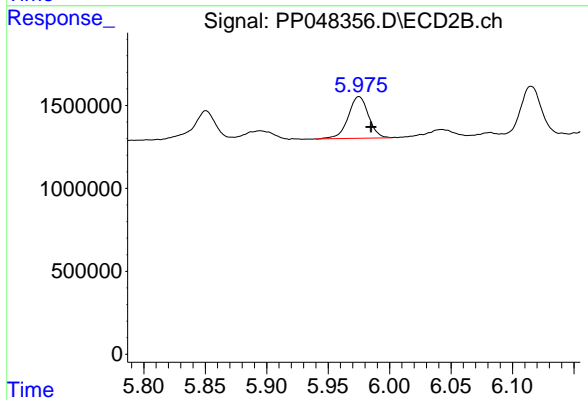
R.T.: 8.642 min
 Delta R.T.: -0.018 min
 Response: 23165568
 Conc: 14.33 ng/ml



#31 AR-1260-1

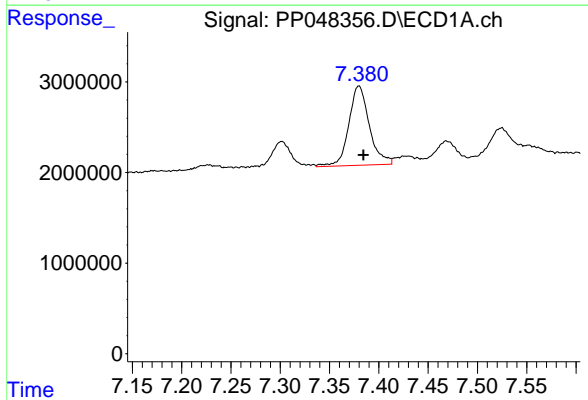
R.T.: 7.092 min
 Delta R.T.: -0.004 min
 Response: 3667267
 Conc: 39.29 ng/ml

Instrument :
 ECD_P
 ClientSampleId :
 P015-SS007-1824-01



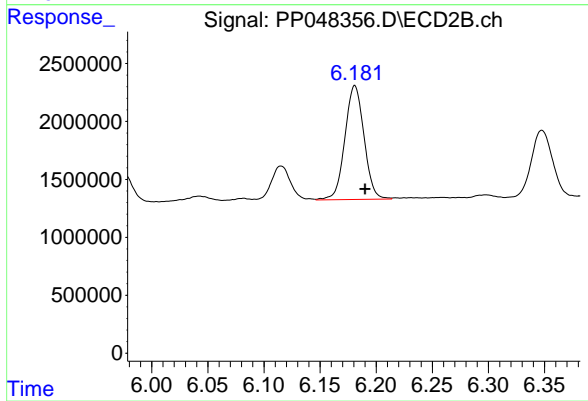
#31 AR-1260-1

R.T.: 5.975 min
 Delta R.T.: -0.010 min
 Response: 2888969
 Conc: 33.75 ng/ml



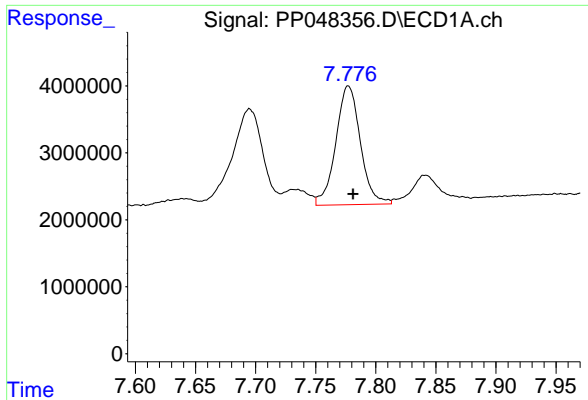
#32 AR-1260-2

R.T.: 7.380 min
 Delta R.T.: -0.004 min
 Response: 12731634
 Conc: 113.89 ng/ml



#32 AR-1260-2

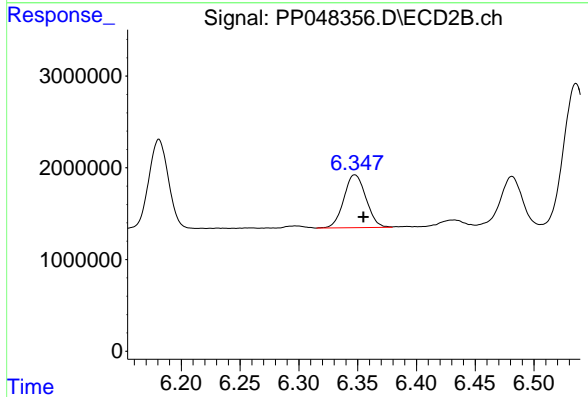
R.T.: 6.181 min
 Delta R.T.: -0.009 min
 Response: 11661866
 Conc: 113.14 ng/ml



#33 AR-1260-3

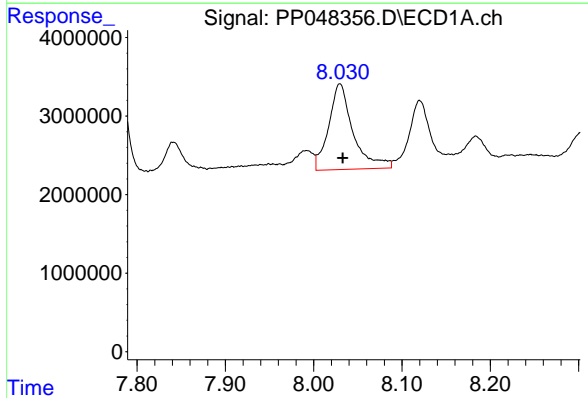
R.T.: 7.777 min
 Delta R.T.: -0.004 min
 Response: 25275966
 Conc: 295.08 ng/ml

Instrument :
 ECD_P
 ClientSampleId :
 P015-SS007-1824-01



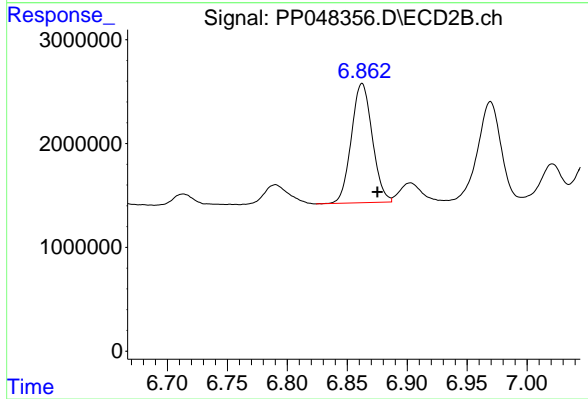
#33 AR-1260-3

R.T.: 6.348 min
 Delta R.T.: -0.007 min
 Response: 7527195
 Conc: 76.01 ng/ml



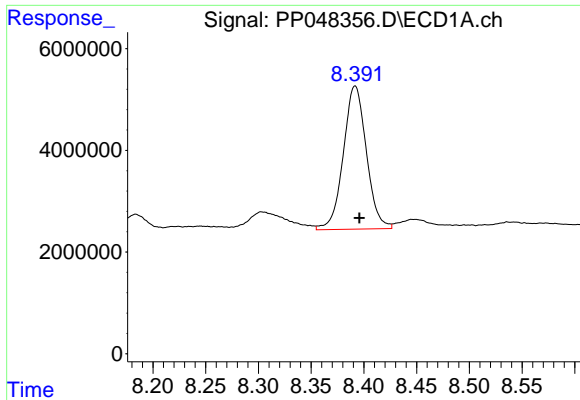
#34 AR-1260-4

R.T.: 8.030 min
 Delta R.T.: -0.003 min
 Response: 20955465
 Conc: 201.97 ng/ml



#34 AR-1260-4

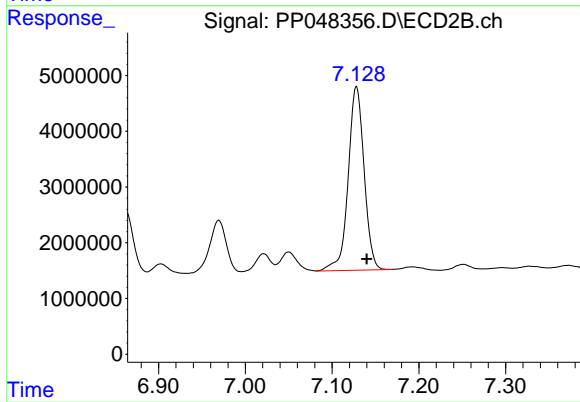
R.T.: 6.862 min
 Delta R.T.: -0.013 min
 Response: 13973432
 Conc: 167.85 ng/ml



#35 AR-1260-5

R.T.: 8.392 min
Delta R.T.: -0.004 min
Response: 42825649
Conc: 207.53 ng/ml

Instrument :
ECD_P
ClientSampleId :
P015-SS007-1824-01



#35 AR-1260-5

R.T.: 7.128 min
Delta R.T.: -0.012 min
Response: 41960828
Conc: 211.48 ng/ml