

Data Path : Z:\pestpcbsrv\HPCHEM1\ECD_P\Data\PP060222\
 Data File : PP048369.D
 Signal(s) : Signal #1: ECD1A.ch Signal #2: ECD2B.ch
 Acq On : 03 Jun 2022 04:29
 Operator : YP\AJ
 Sample : N2989-19
 Misc :
 ALS Vial : 64 Sample Multiplier: 1

Instrument :
 ECD_P
 ClientSampleId :
 P015-SS009-2430-01

Integration File signal 1: autoint1.e
 Integration File signal 2: autoint2.e
 Quant Time: Jun 03 06:23:22 2022
 Quant Method : Z:\pestpcbsrv\HPCHEM1\ECD_P\methods\PP052722.M
 Quant Title : GC EXTRACTABLES
 QLast Update : Fri May 27 23:53:39 2022
 Response via : Initial Calibration
 Integrator: ChemStation

Volume Inj. : 2 µl
 Signal #1 Phase : ZB-MR1 Signal #2 Phase: ZB-MR2
 Signal #1 Info : 30Mx0.32mmx 0.50µ Signal #2 Info : 30M x 0.32mm x 0.25µm

Compound	RT#1	RT#2	Resp#1	Resp#2	ng/ml	ng/ml

System Monitoring Compounds						
1) SA Tetrachlo...	4.034	3.214	48813284	39865545	20.845	20.228
2) SA Decachlor...	10.384	8.641	26863644	22962424	13.821	14.205
Target Compounds						
31) L7 AR-1260-1	7.092	5.974	2489378	1349613	26.671	15.766 #
32) L7 AR-1260-2	7.378	6.180	7321421	5910609	65.495	57.341
33) L7 AR-1260-3	7.776	6.348	10539511	2958459	123.044	29.877 #
34) L7 AR-1260-4	8.028	6.862	11306970	5463201	108.976	65.624 #
35) L7 AR-1260-5	8.391	7.127	19551968	18576155	94.748	93.624

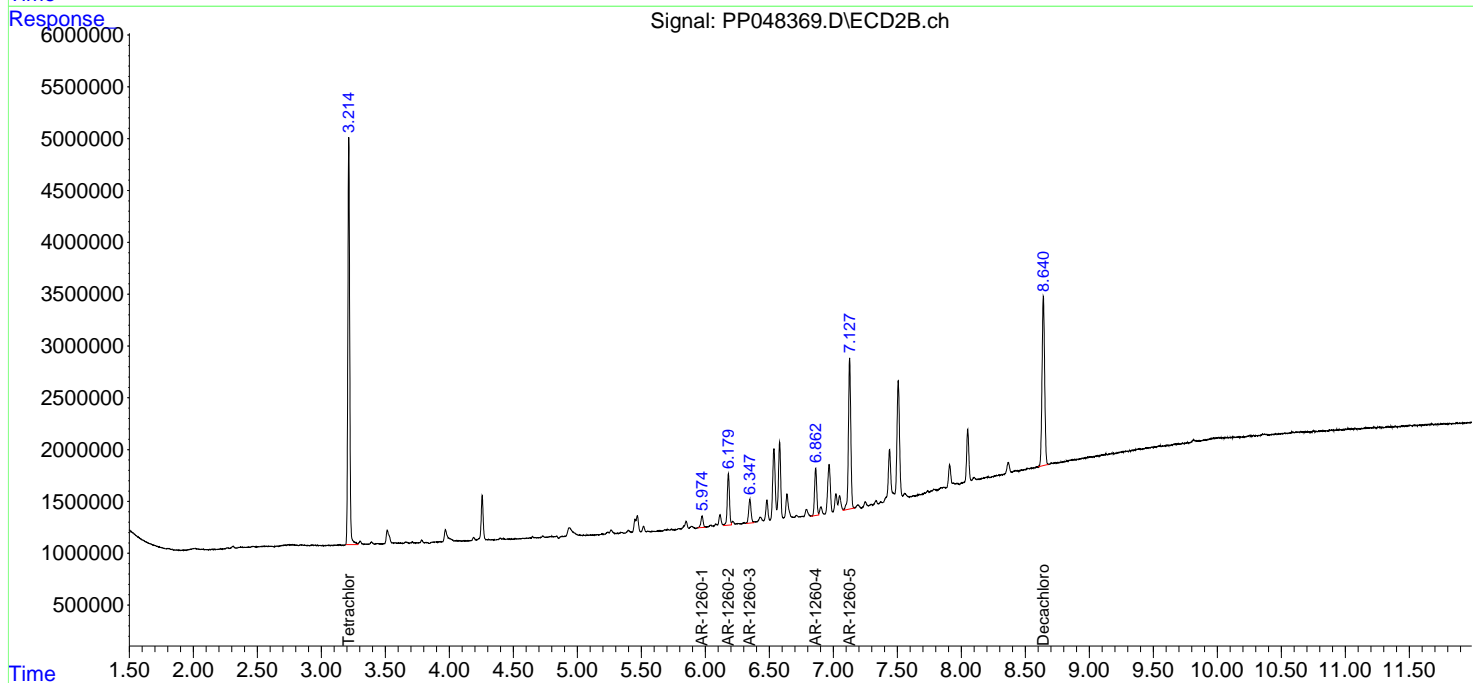
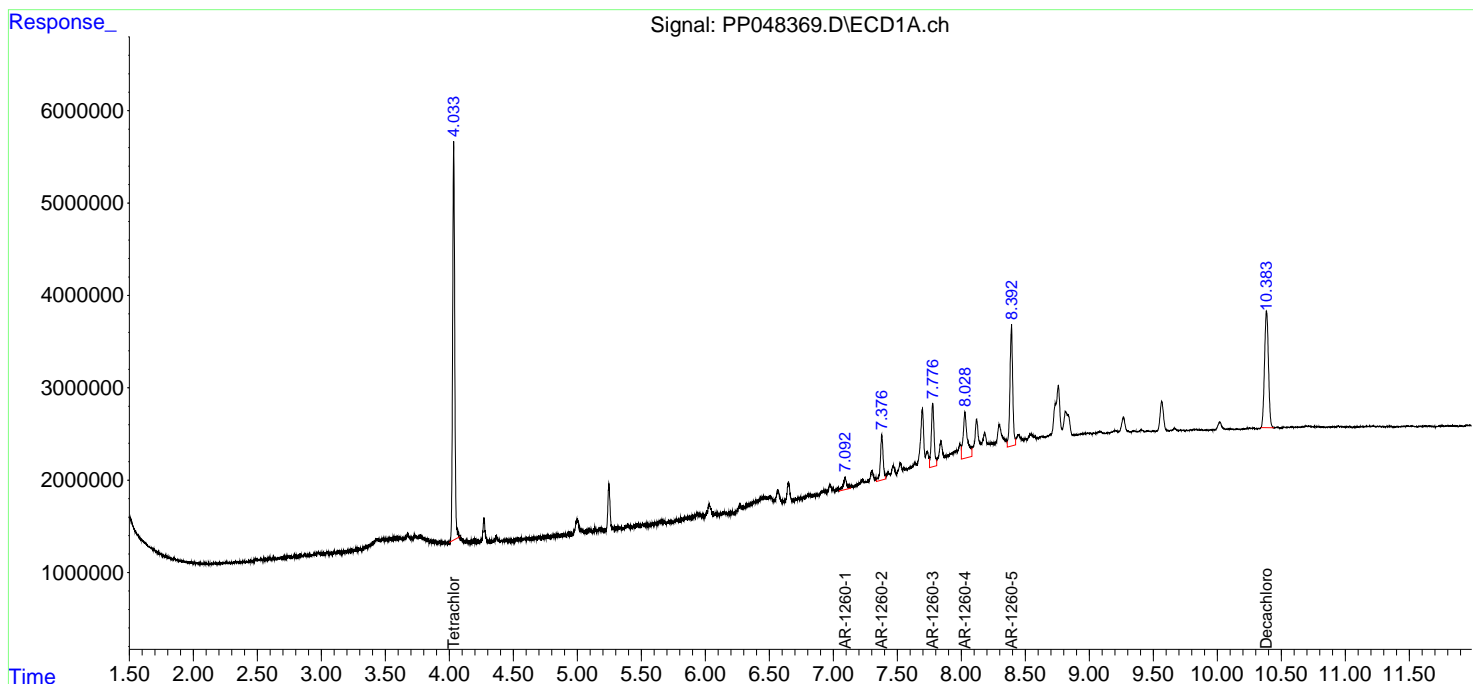
(f)=RT Delta > 1/2 Window (#)=Amounts differ by > 25% (m)=manual int.

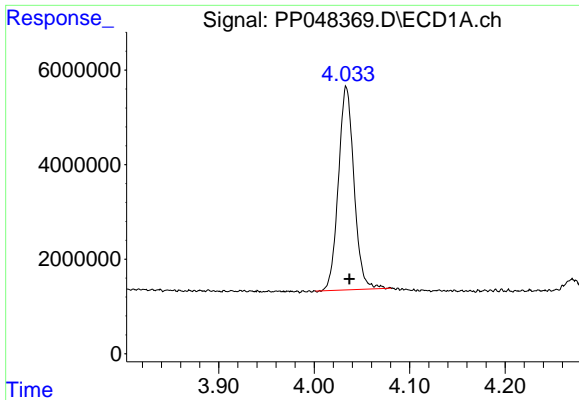
Data Path : Z:\pestpcbsrv\HPCHEM1\ECD_P\Data\PP060222\
 Data File : PP048369.D
 Signal(s) : Signal #1: ECD1A.ch Signal #2: ECD2B.ch
 Acq On : 03 Jun 2022 04:29
 Operator : YP\AJ
 Sample : N2989-19
 Misc :
 ALS Vial : 64 Sample Multiplier: 1

Instrument :
 ECD_P
 ClientSampleId :
 P015-SS009-2430-01

Integration File signal 1: autoint1.e
 Integration File signal 2: autoint2.e
 Quant Time: Jun 03 06:23:22 2022
 Quant Method : Z:\pestpcbsrv\HPCHEM1\ECD_P\methods\PP052722.M
 Quant Title : GC EXTRACTABLES
 QLast Update : Fri May 27 23:53:39 2022
 Response via : Initial Calibration
 Integrator: ChemStation

Volume Inj. : 2 µl
 Signal #1 Phase : ZB-MR1 Signal #2 Phase: ZB-MR2
 Signal #1 Info : 30Mx0.32mmx 0.50µ Signal #2 Info : 30M x 0.32mm x 0.25µm

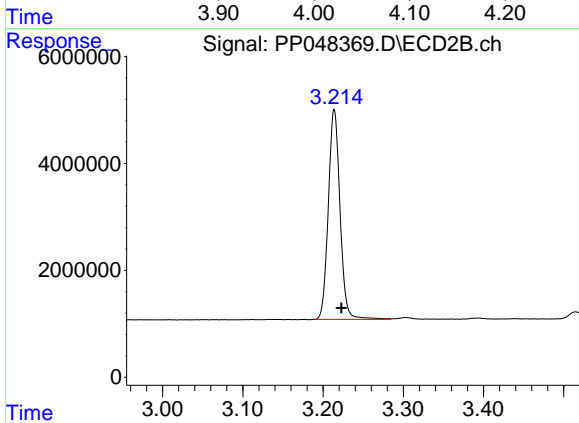




#1 Tetrachloro-m-xylene

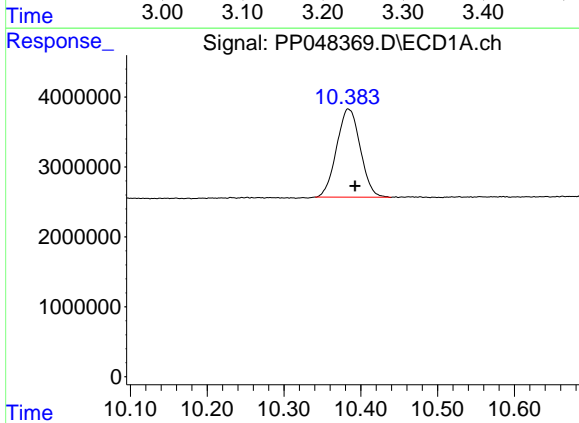
R.T.: 4.034 min
 Delta R.T.: -0.003 min
 Response: 48813284
 Conc: 20.84 ng/ml

Instrument :
 ECD_P
 ClientSampleId :
 P015-SS009-2430-01



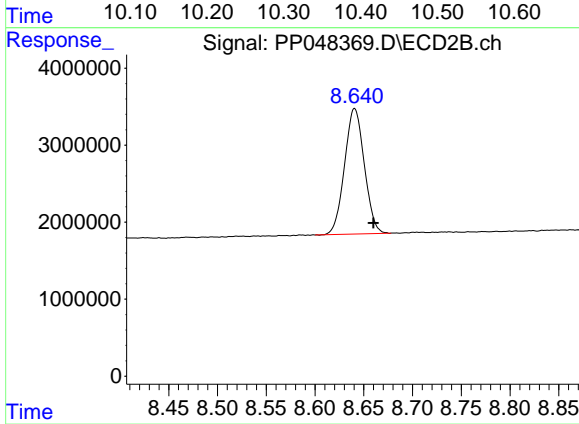
#1 Tetrachloro-m-xylene

R.T.: 3.214 min
 Delta R.T.: -0.009 min
 Response: 39865545
 Conc: 20.23 ng/ml



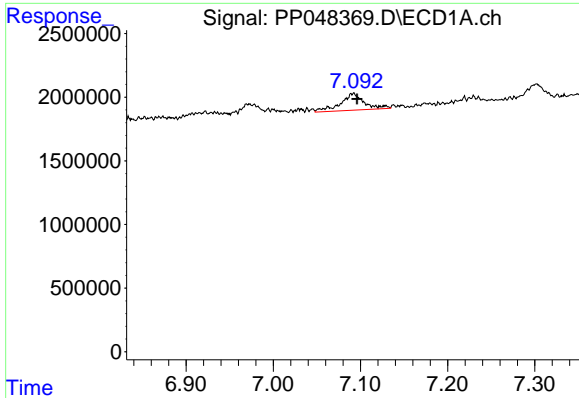
#2 Decachlorobiphenyl

R.T.: 10.384 min
 Delta R.T.: -0.008 min
 Response: 26863644
 Conc: 13.82 ng/ml



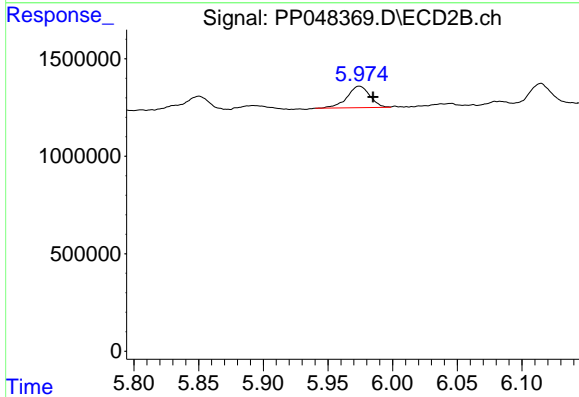
#2 Decachlorobiphenyl

R.T.: 8.641 min
 Delta R.T.: -0.019 min
 Response: 22962424
 Conc: 14.21 ng/ml

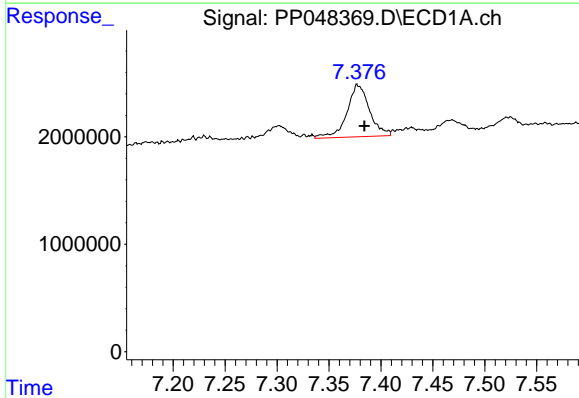


#31 AR-1260-1
 R.T.: 7.092 min
 Delta R.T.: -0.004 min
 Response: 2489378
 Conc: 26.67 ng/ml

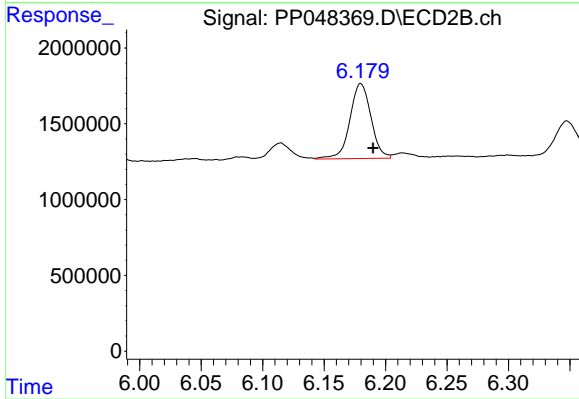
Instrument : ECD_P
 ClientSampleId : P015-SS009-2430-01



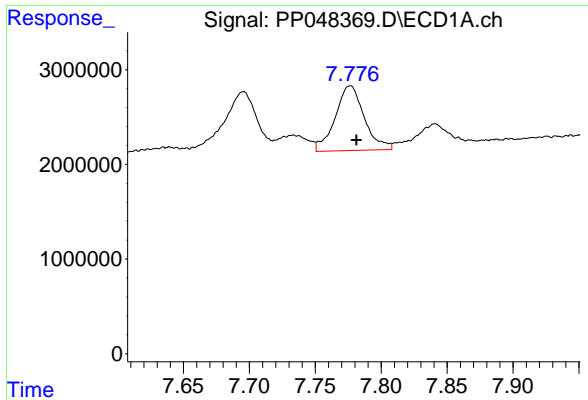
#31 AR-1260-1
 R.T.: 5.974 min
 Delta R.T.: -0.011 min
 Response: 1349613
 Conc: 15.77 ng/ml



#32 AR-1260-2
 R.T.: 7.378 min
 Delta R.T.: -0.006 min
 Response: 7321421
 Conc: 65.50 ng/ml



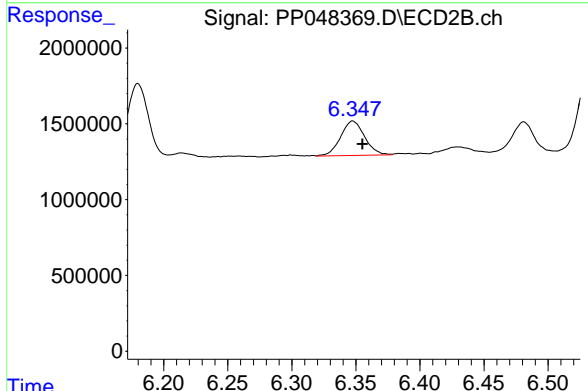
#32 AR-1260-2
 R.T.: 6.180 min
 Delta R.T.: -0.010 min
 Response: 5910609
 Conc: 57.34 ng/ml



#33 AR-1260-3

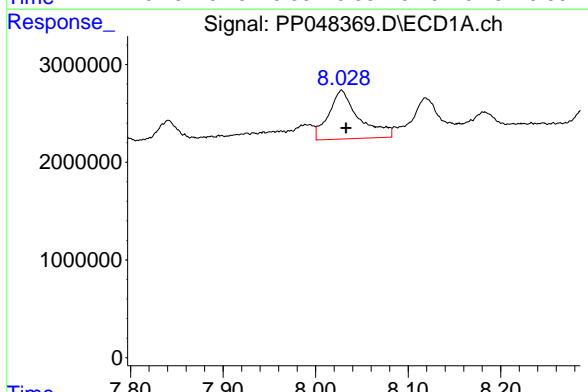
R.T.: 7.776 min
 Delta R.T.: -0.005 min
 Response: 10539511
 Conc: 123.04 ng/ml

Instrument :
 ECD_P
 ClientSampleId :
 P015-SS009-2430-01



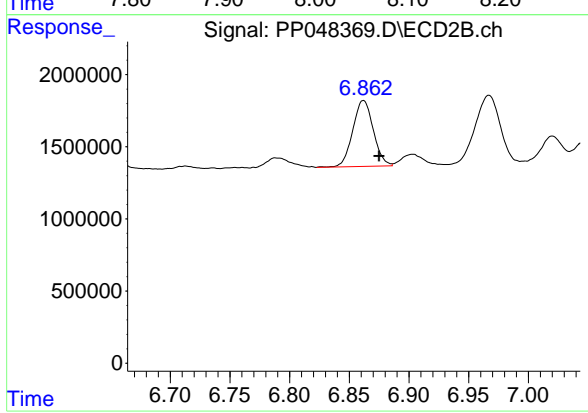
#33 AR-1260-3

R.T.: 6.348 min
 Delta R.T.: -0.007 min
 Response: 2958459
 Conc: 29.88 ng/ml



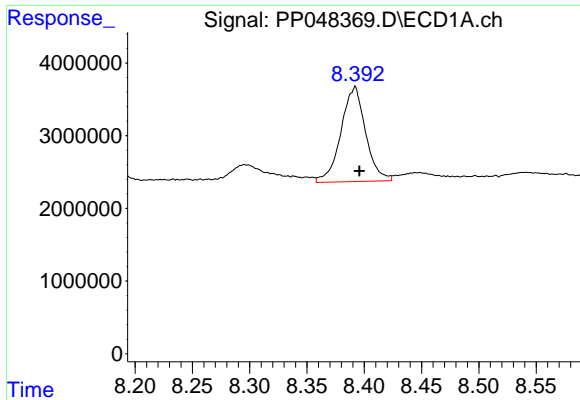
#34 AR-1260-4

R.T.: 8.028 min
 Delta R.T.: -0.005 min
 Response: 11306970
 Conc: 108.98 ng/ml



#34 AR-1260-4

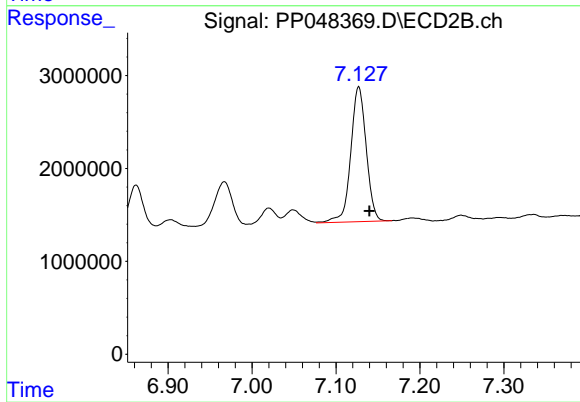
R.T.: 6.862 min
 Delta R.T.: -0.013 min
 Response: 5463201
 Conc: 65.62 ng/ml



#35 AR-1260-5

R.T.: 8.391 min
Delta R.T.: -0.004 min
Response: 19551968
Conc: 94.75 ng/ml

Instrument :
ECD_P
ClientSampleId :
P015-SS009-2430-01



#35 AR-1260-5

R.T.: 7.127 min
Delta R.T.: -0.013 min
Response: 18576155
Conc: 93.62 ng/ml