

Data Path : Z:\pestpcbsrv\HPCHEM1\ECD_P\Data\PP060822\
 Data File : PP048497.D
 Signal(s) : Signal #1: ECD1A.ch Signal #2: ECD2B.ch
 Acq On : 07 Jun 2022 11:56
 Operator : YP\AJ
 Sample : N3162-11
 Misc :
 ALS Vial : 11 Sample Multiplier: 1

Instrument :
 ECD_P
ClientSampleId :
 LOS-B101-S4-E1(1-1.5)

Integration File signal 1: autoint1.e
 Integration File signal 2: autoint2.e
 Quant Time: Jun 07 13:12:04 2022
 Quant Method : Z:\pestpcbsrv\HPCHEM1\ECD_P\methods\PP060722.M
 Quant Title : GC EXTRACTABLES
 QLast Update : Tue Jun 07 11:09:40 2022
 Response via : Initial Calibration
 Integrator: ChemStation

Volume Inj. : 2 µl
 Signal #1 Phase : ZB-MR1 Signal #2 Phase: ZB-MR2
 Signal #1 Info : 30Mx0.32mmx 0.50µ Signal #2 Info : 30M x 0.32mm x 0.25µm

Compound	RT#1	RT#2	Resp#1	Resp#2	ng/ml	ng/ml

System Monitoring Compounds						
1) SA Tetrachlo...	4.038	3.207	37624289	30846682	15.702	16.207
2) SA Decachlor...	10.388	8.629	34253225	18608386	17.971	15.196
Target Compounds						
31) L7 AR-1260-1	7.095	5.967	79868527	60723964	766.523	719.639
32) L7 AR-1260-2	7.382	6.173	114.4E6	72029689	939.234	703.214 #
33) L7 AR-1260-3	7.780	6.338	63656224	62349799	751.905	643.366
34) L7 AR-1260-4	8.032	6.854	80573879	44634957	778.776	630.637
35) L7 AR-1260-5	8.394	7.120	160.8E6	108.6E6	821.538	676.393

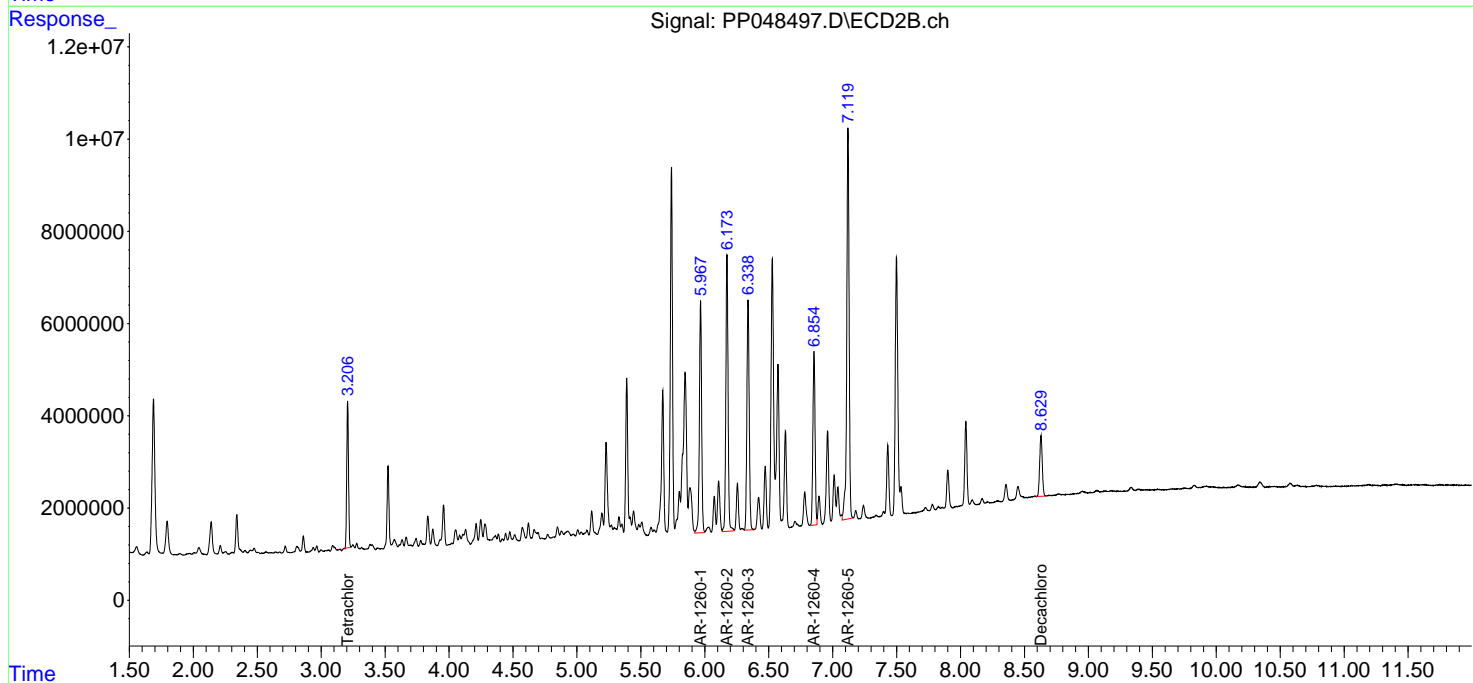
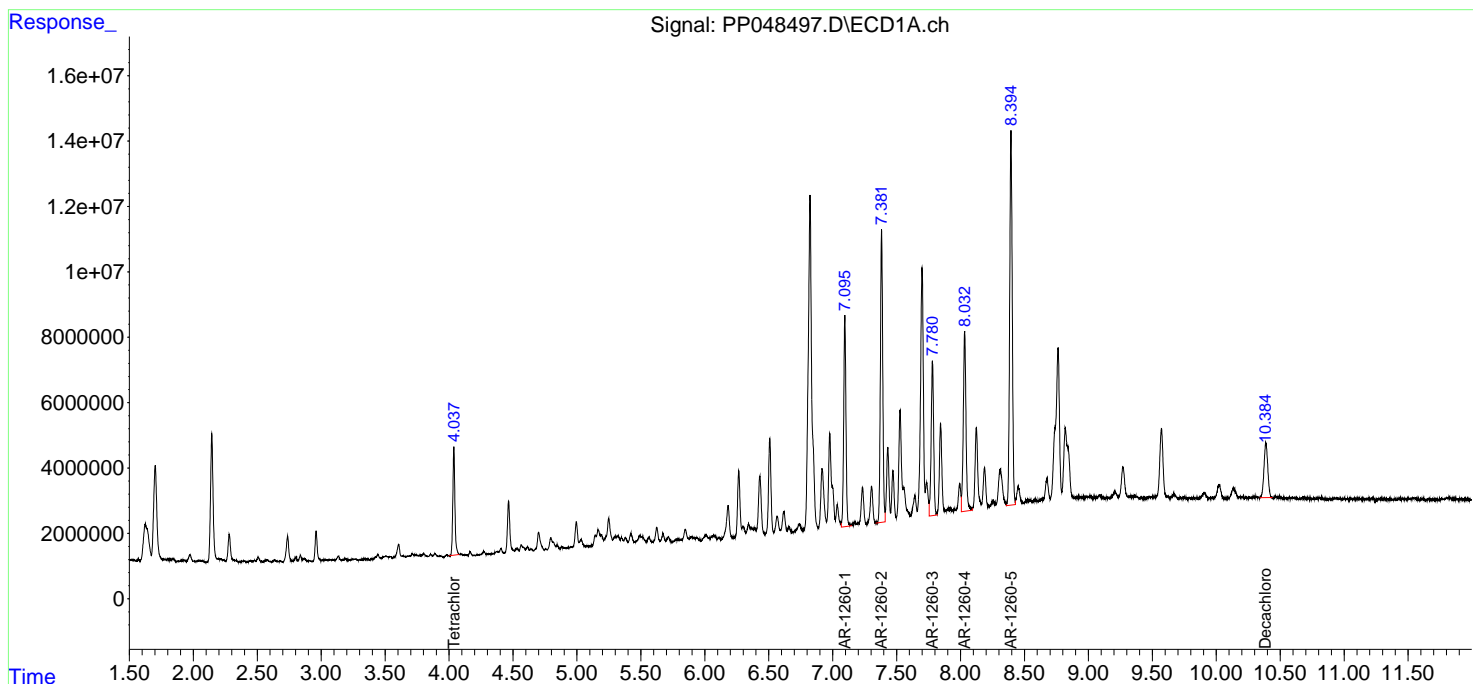
(f)=RT Delta > 1/2 Window (#)=Amounts differ by > 25% (m)=manual int.

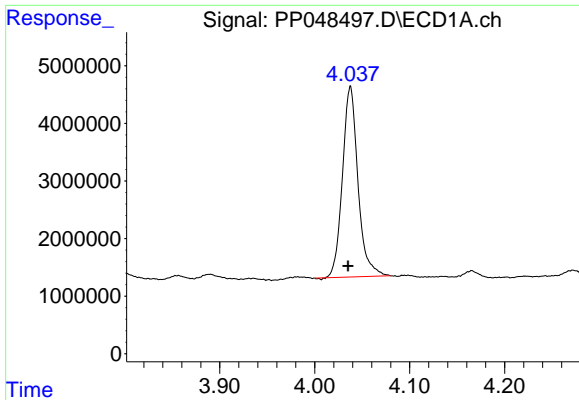
Data Path : Z:\pestpcbsrv\HPCHEM1\ECD_P\Data\PP060822\
 Data File : PP048497.D
 Signal(s) : Signal #1: ECD1A.ch Signal #2: ECD2B.ch
 Acq On : 07 Jun 2022 11:56
 Operator : YP\AJ
 Sample : N3162-11
 Misc :
 ALS Vial : 11 Sample Multiplier: 1

Instrument :
 ECD_P
 ClientSampleId :
 LOS-B101-S4-E1(1-1.5)

Integration File signal 1: autoint1.e
 Integration File signal 2: autoint2.e
 Quant Time: Jun 07 13:12:04 2022
 Quant Method : Z:\pestpcbsrv\HPCHEM1\ECD_P\methods\PP060722.M
 Quant Title : GC EXTRACTABLES
 QLast Update : Tue Jun 07 11:09:40 2022
 Response via : Initial Calibration
 Integrator: ChemStation

Volume Inj. : 2 µl
 Signal #1 Phase : ZB-MR1 Signal #2 Phase: ZB-MR2
 Signal #1 Info : 30Mx0.32mmx 0.50µ Signal #2 Info : 30M x 0.32mm x 0.25µm

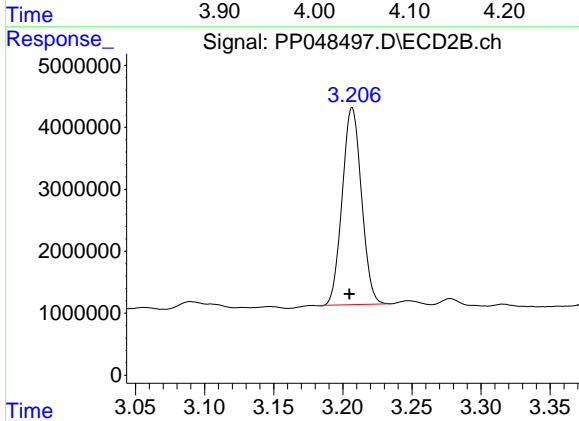




#1 Tetrachloro-m-xylene

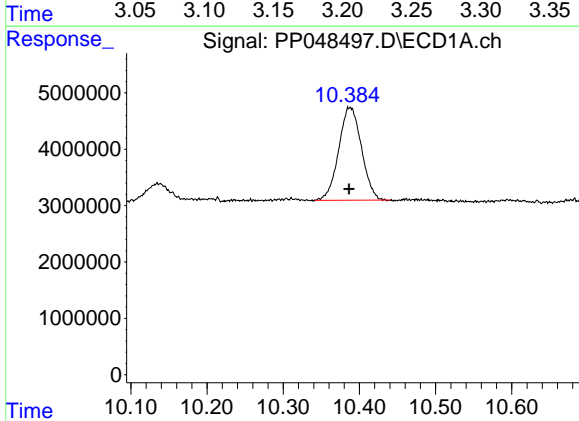
R.T.: 4.038 min
 Delta R.T.: 0.003 min
 Response: 37624289
 Conc: 15.70 ng/ml

Instrument :
 ECD_P
 ClientSampleId :
 LOS-B101-S4-E1(1-1.5)



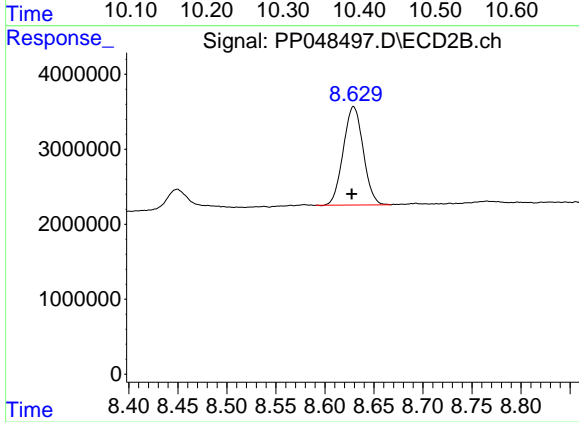
#1 Tetrachloro-m-xylene

R.T.: 3.207 min
 Delta R.T.: 0.002 min
 Response: 30846682
 Conc: 16.21 ng/ml



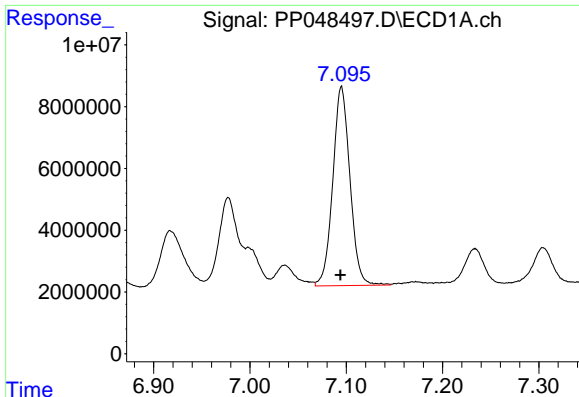
#2 Decachlorobiphenyl

R.T.: 10.388 min
 Delta R.T.: 0.001 min
 Response: 34253225
 Conc: 17.97 ng/ml



#2 Decachlorobiphenyl

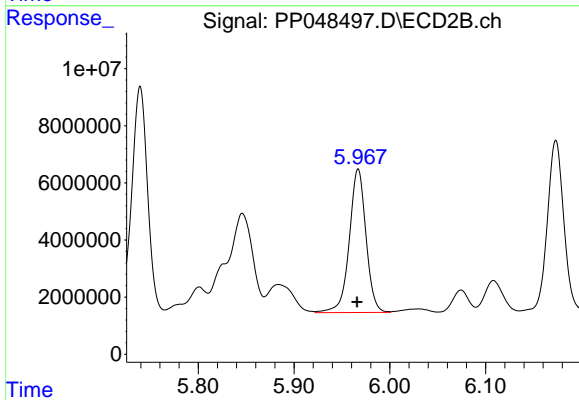
R.T.: 8.629 min
 Delta R.T.: 0.002 min
 Response: 18608386
 Conc: 15.20 ng/ml



#31 AR-1260-1

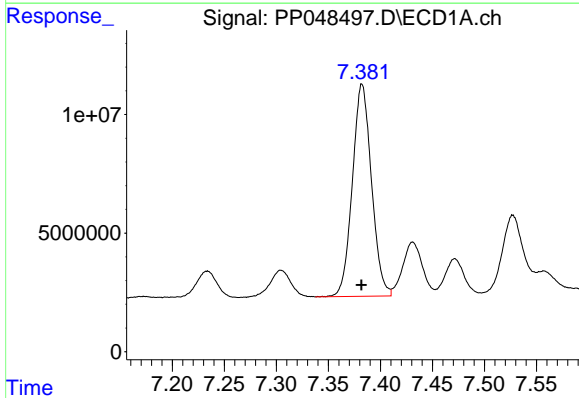
R.T.: 7.095 min
 Delta R.T.: 0.001 min
 Response: 79868527
 Conc: 766.52 ng/ml

Instrument :
 ECD_P
 ClientSampleId :
 LOS-B101-S4-E1(1-1.5)



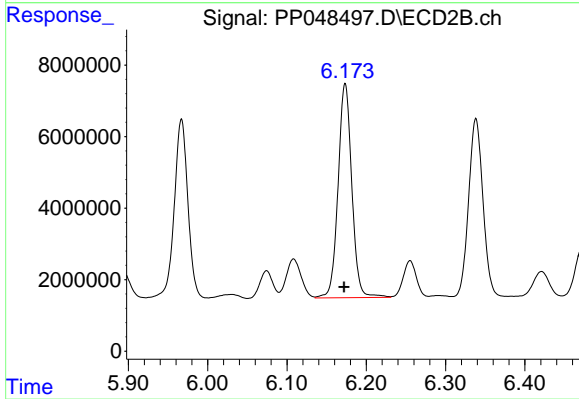
#31 AR-1260-1

R.T.: 5.967 min
 Delta R.T.: 0.001 min
 Response: 60723964
 Conc: 719.64 ng/ml



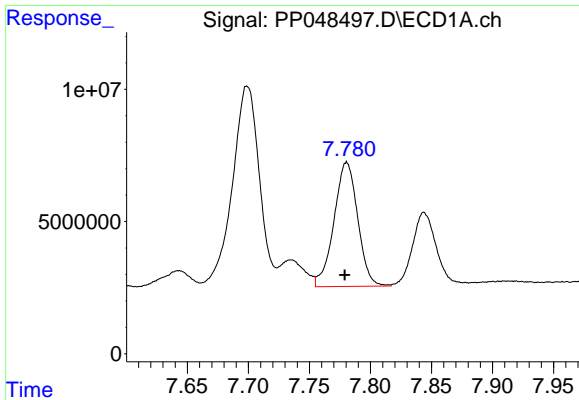
#32 AR-1260-2

R.T.: 7.382 min
 Delta R.T.: 0.000 min
 Response: 114367131
 Conc: 939.23 ng/ml



#32 AR-1260-2

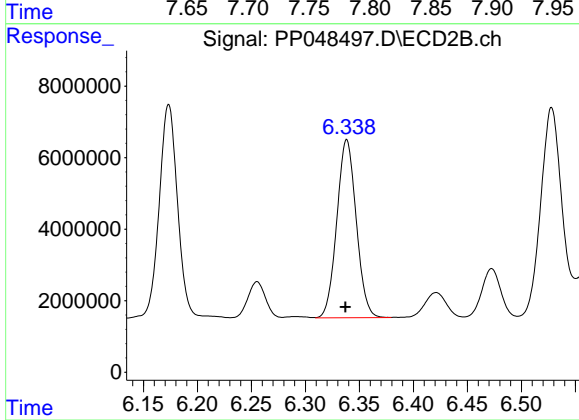
R.T.: 6.173 min
 Delta R.T.: 0.002 min
 Response: 72029689
 Conc: 703.21 ng/ml



#33 AR-1260-3

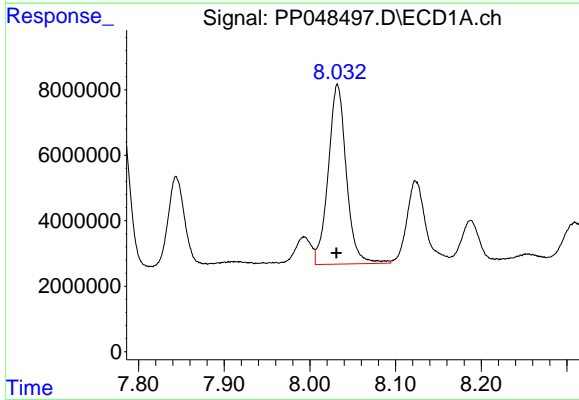
R.T.: 7.780 min
Delta R.T.: 0.001 min
Response: 63656224
Conc: 751.91 ng/ml

Instrument :
ECD_P
ClientSampleId :
LOS-B101-S4-E1(1-1.5)



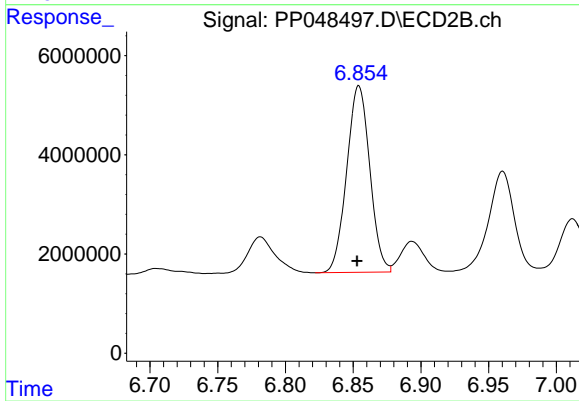
#33 AR-1260-3

R.T.: 6.338 min
Delta R.T.: 0.001 min
Response: 62349799
Conc: 643.37 ng/ml



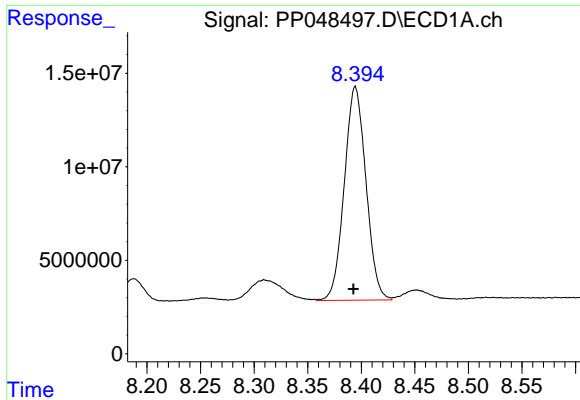
#34 AR-1260-4

R.T.: 8.032 min
Delta R.T.: 0.001 min
Response: 80573879
Conc: 778.78 ng/ml



#34 AR-1260-4

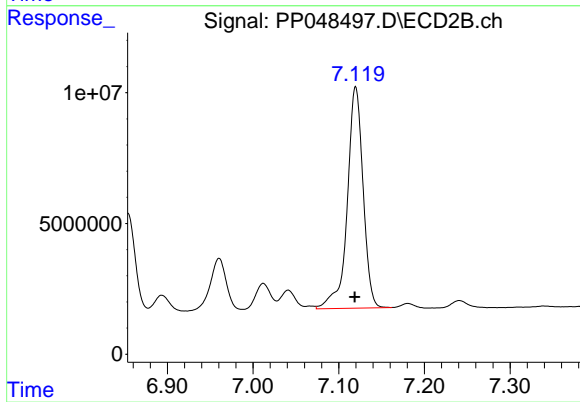
R.T.: 6.854 min
Delta R.T.: 0.001 min
Response: 44634957
Conc: 630.64 ng/ml



#35 AR-1260-5

R.T.: 8.394 min
Delta R.T.: 0.002 min
Response: 160822321
Conc: 821.54 ng/ml

Instrument :
ECD_P
ClientSampleId :
LOS-B101-S4-E1(1-1.5)



#35 AR-1260-5

R.T.: 7.120 min
Delta R.T.: 0.001 min
Response: 108623234
Conc: 676.39 ng/ml