

Data Path : Z:\pestpcbsrv\HPCHEM1\ECD\_P\Data\PP060822\  
 Data File : PP048532.D  
 Signal(s) : Signal #1: ECD1A.ch Signal #2: ECD2B.ch  
 Acq On : 07 Jun 2022 21:20  
 Operator : YP\AJ  
 Sample : PB145369BS  
 Misc :  
 ALS Vial : 36 Sample Multiplier: 1

Instrument :  
 ECD\_P  
 ClientSampleId :  
 PB145369BS

Integration File signal 1: autoint1.e  
 Integration File signal 2: autoint2.e  
 Quant Time: Jun 08 03:14:54 2022  
 Quant Method : Z:\pestpcbsrv\HPCHEM1\ECD\_P\methods\PP060722.M  
 Quant Title : GC EXTRACTABLES  
 QLast Update : Tue Jun 07 11:09:40 2022  
 Response via : Initial Calibration  
 Integrator: ChemStation

Volume Inj. : 2 µl  
 Signal #1 Phase : ZB-MR1 Signal #2 Phase: ZB-MR2  
 Signal #1 Info : 30Mx0.32mmx 0.50µ Signal #2 Info : 30M x 0.32mm x 0.25µm

Compound	RT#1	RT#2	Resp#1	Resp#2	ng/ml	ng/ml
-----						
System Monitoring Compounds						
1) SA Tetrachlo...	4.035	3.204	52584338	41425571	21.945	21.765
2) SA Decachlor...	10.384	8.622	42757294	28332044	22.433	23.136
Target Compounds						
3) L1 AR-1016-1	5.322	4.363	36393060	29212370	422.997	421.663
4) L1 AR-1016-2	5.347	4.383	51754468	40543588	425.088	427.459
5) L1 AR-1016-3	5.414	4.569	31895394	22602497	420.814	434.565
6) L1 AR-1016-4	5.523	4.617	26570171	17404267	422.386	432.382
7) L1 AR-1016-5	5.847	4.844	26877488	22535439	435.366	441.885
31) L7 AR-1260-1	7.093	5.962	46585345	38918753	447.094	461.226
32) L7 AR-1260-2	7.381	6.168	53695112	45955404	440.968	448.655
33) L7 AR-1260-3	7.778	6.333	35014780	43631086	413.593	450.214
34) L7 AR-1260-4	8.030	6.849	43845296	30852761	423.781	435.911
35) L7 AR-1260-5	8.392	7.114	80595639	69728294	411.712	434.196

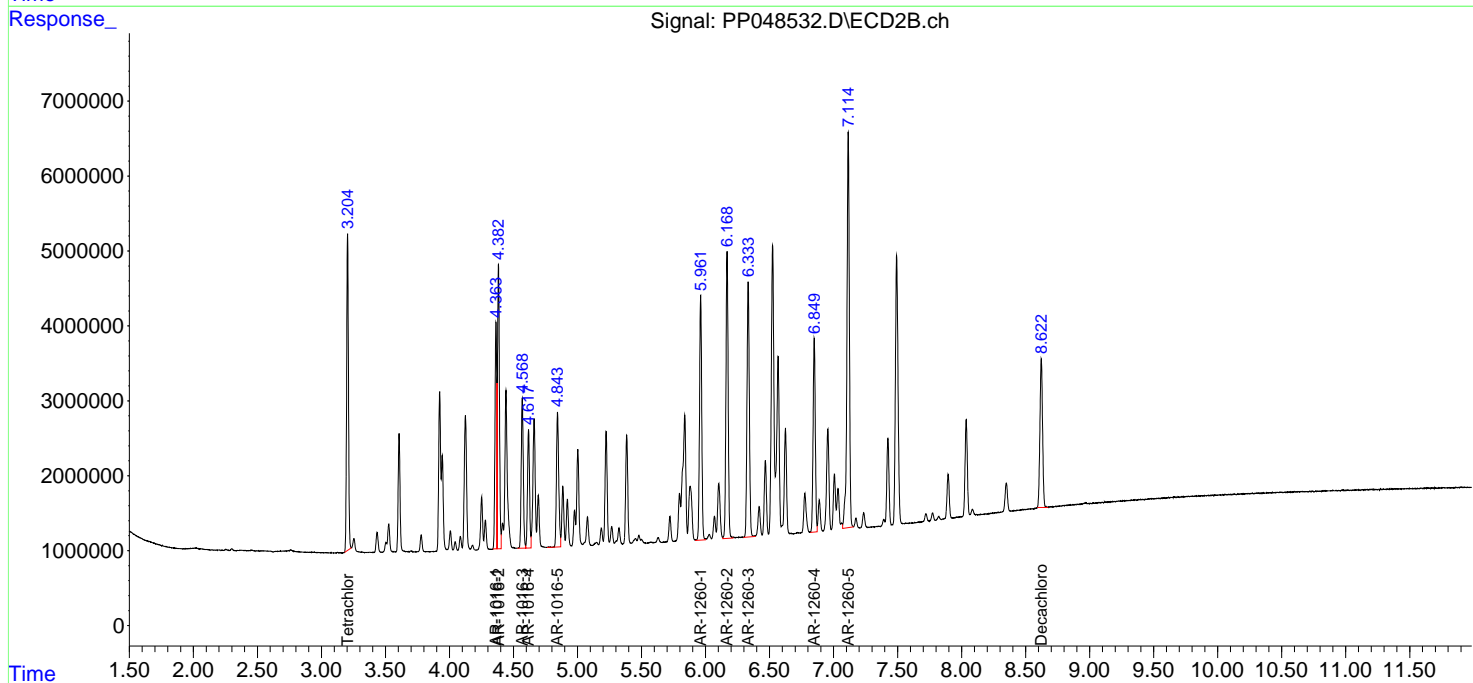
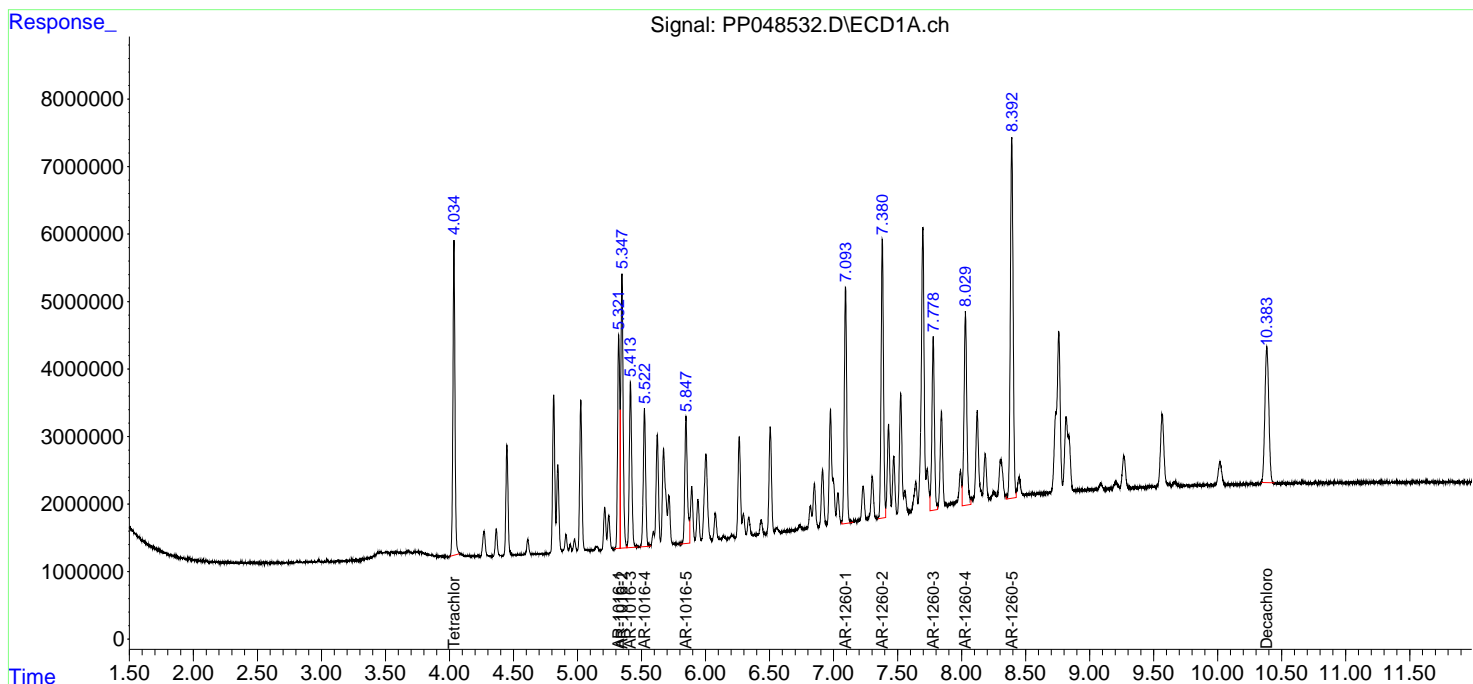
(f)=RT Delta > 1/2 Window (#)=Amounts differ by > 25% (m)=manual int.

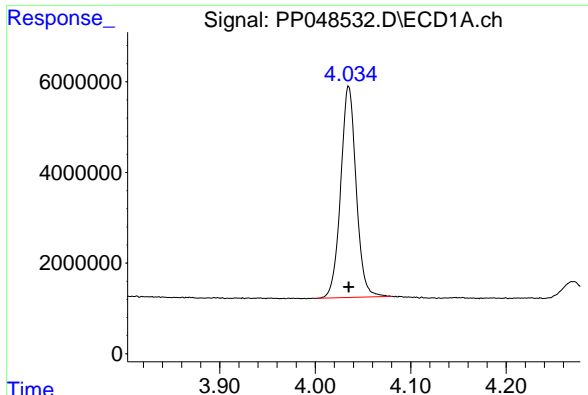
Data Path : Z:\pestpcbsrv\HPCHEM1\ECD\_P\Data\PP060822\  
 Data File : PP048532.D  
 Signal(s) : Signal #1: ECD1A.ch Signal #2: ECD2B.ch  
 Acq On : 07 Jun 2022 21:20  
 Operator : YP\AJ  
 Sample : PB145369BS  
 Misc :  
 ALS Vial : 36 Sample Multiplier: 1

Instrument :  
 ECD\_P  
 ClientSampleId :  
 PB145369BS

Integration File signal 1: autoint1.e  
 Integration File signal 2: autoint2.e  
 Quant Time: Jun 08 03:14:54 2022  
 Quant Method : Z:\pestpcbsrv\HPCHEM1\ECD\_P\methods\PP060722.M  
 Quant Title : GC EXTRACTABLES  
 QLast Update : Tue Jun 07 11:09:40 2022  
 Response via : Initial Calibration  
 Integrator: ChemStation

Volume Inj. : 2 µl  
 Signal #1 Phase : ZB-MR1 Signal #2 Phase: ZB-MR2  
 Signal #1 Info : 30Mx0.32mmx 0.50µ Signal #2 Info : 30M x 0.32mm x 0.25µm

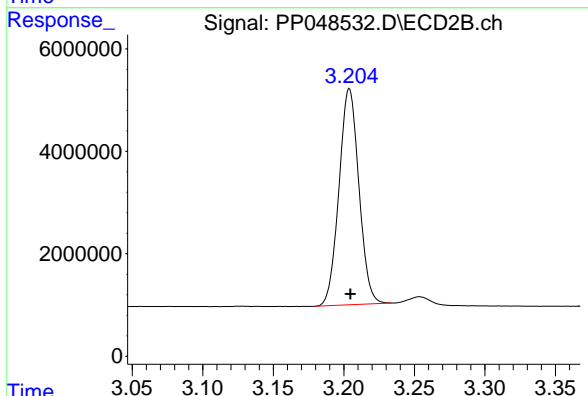




#1 Tetrachloro-m-xylene

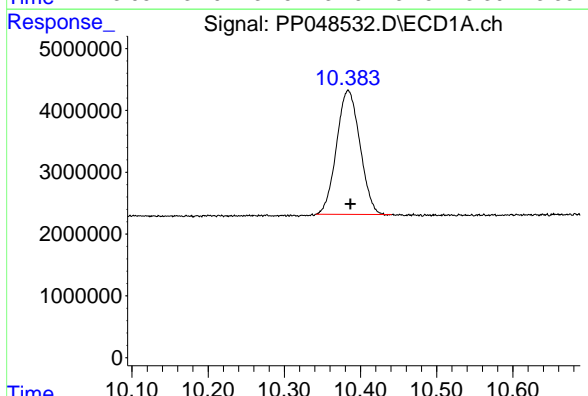
R.T.: 4.035 min  
 Delta R.T.: 0.000 min  
 Response: 52584338  
 Conc: 21.94 ng/ml

Instrument :  
 ECD\_P  
 ClientSampleId :  
 PB145369BS



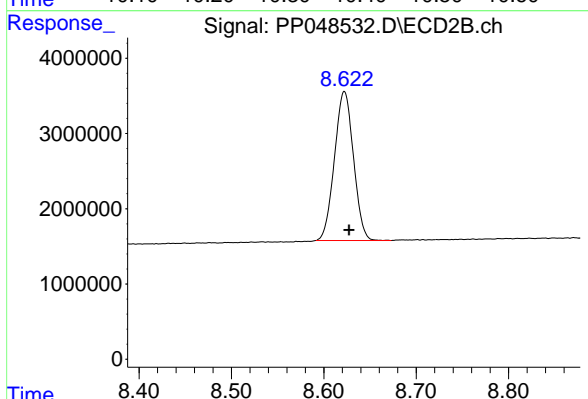
#1 Tetrachloro-m-xylene

R.T.: 3.204 min  
 Delta R.T.: 0.000 min  
 Response: 41425571  
 Conc: 21.76 ng/ml



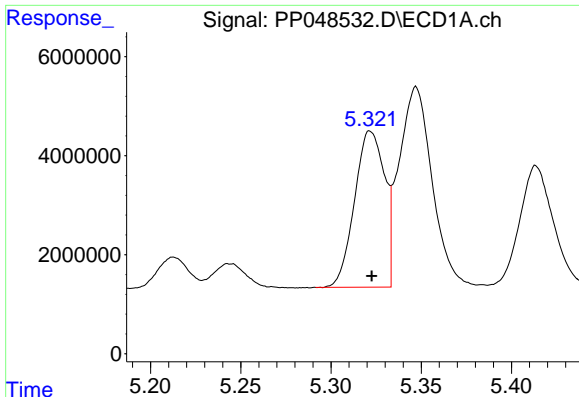
#2 Decachlorobiphenyl

R.T.: 10.384 min  
 Delta R.T.: -0.003 min  
 Response: 42757294  
 Conc: 22.43 ng/ml



#2 Decachlorobiphenyl

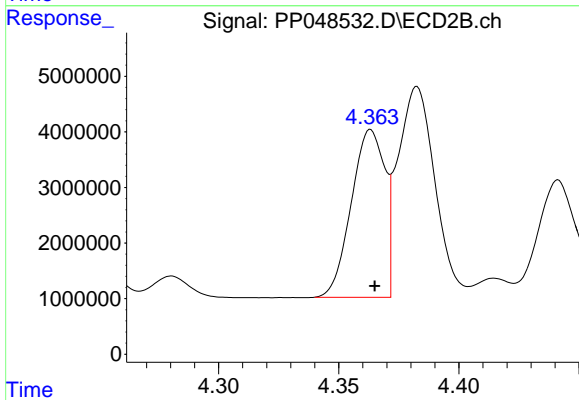
R.T.: 8.622 min  
 Delta R.T.: -0.005 min  
 Response: 28332044  
 Conc: 23.14 ng/ml



#3 AR-1016-1

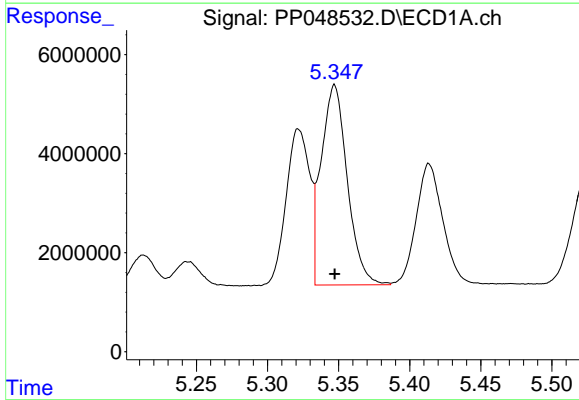
R.T.: 5.322 min  
 Delta R.T.: 0.000 min  
 Response: 36393060  
 Conc: 423.00 ng/ml

Instrument :  
 ECD\_P  
 ClientSampleId :  
 PB145369BS



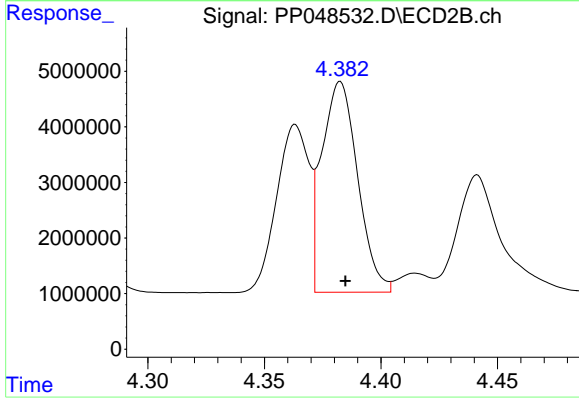
#3 AR-1016-1

R.T.: 4.363 min  
 Delta R.T.: -0.002 min  
 Response: 29212370  
 Conc: 421.66 ng/ml



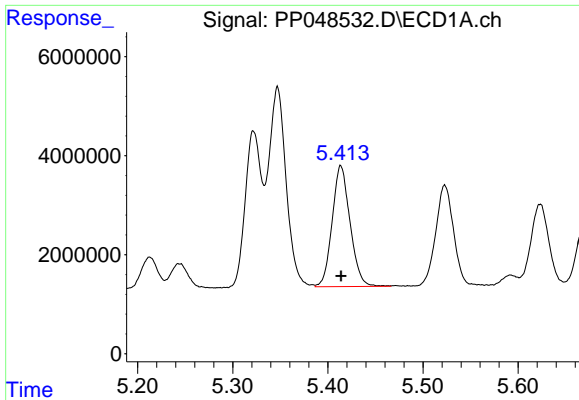
#4 AR-1016-2

R.T.: 5.347 min  
 Delta R.T.: 0.000 min  
 Response: 51754468  
 Conc: 425.09 ng/ml



#4 AR-1016-2

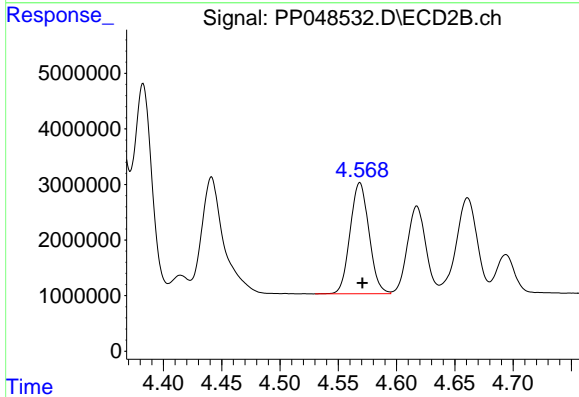
R.T.: 4.383 min  
 Delta R.T.: -0.002 min  
 Response: 40543588  
 Conc: 427.46 ng/ml



#5 AR-1016-3

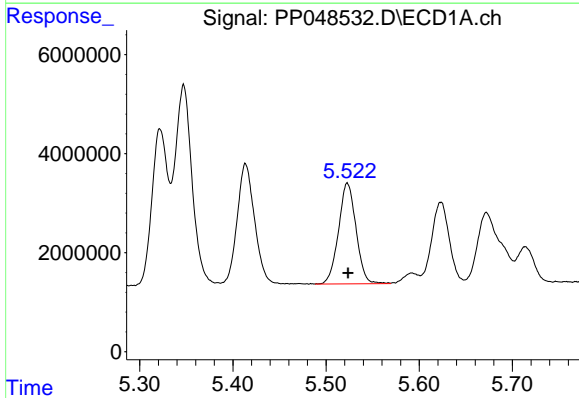
R.T.: 5.414 min  
 Delta R.T.: 0.000 min  
 Response: 31895394  
 Conc: 420.81 ng/ml

Instrument :  
 ECD\_P  
 ClientSampleId :  
 PB145369BS



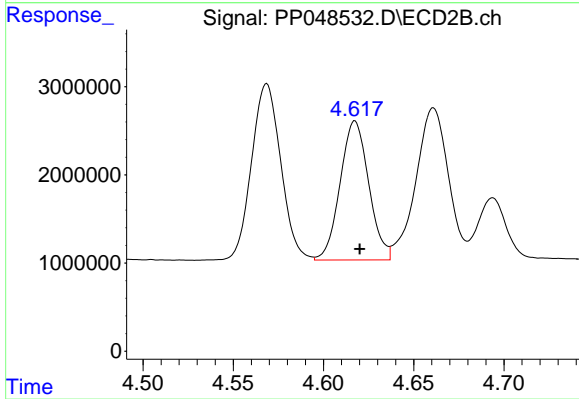
#5 AR-1016-3

R.T.: 4.569 min  
 Delta R.T.: -0.002 min  
 Response: 22602497  
 Conc: 434.56 ng/ml



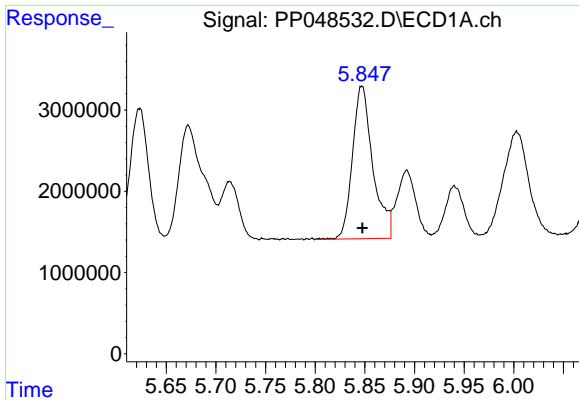
#6 AR-1016-4

R.T.: 5.523 min  
 Delta R.T.: 0.000 min  
 Response: 26570171  
 Conc: 422.39 ng/ml



#6 AR-1016-4

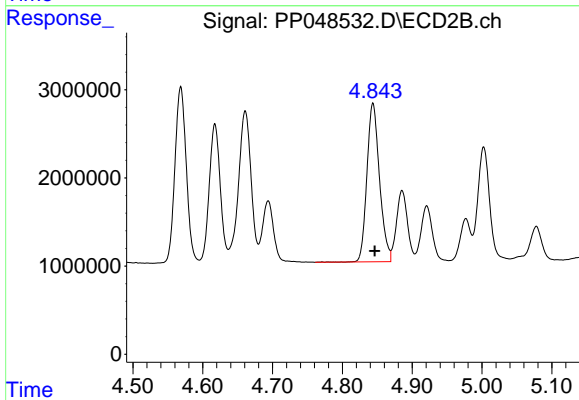
R.T.: 4.617 min  
 Delta R.T.: -0.003 min  
 Response: 17404267  
 Conc: 432.38 ng/ml



#7 AR-1016-5

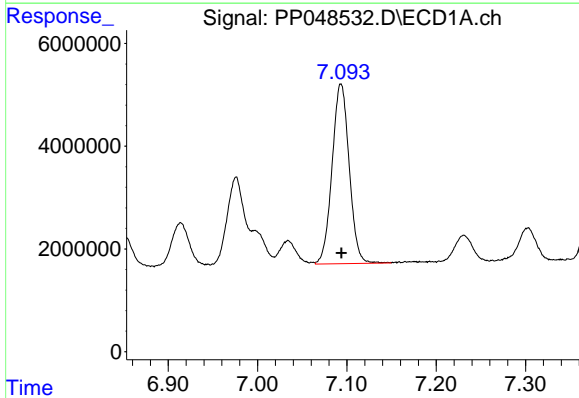
R.T.: 5.847 min  
 Delta R.T.: 0.000 min  
 Response: 26877488  
 Conc: 435.37 ng/ml

Instrument :  
 ECD\_P  
 ClientSampleId :  
 PB145369BS



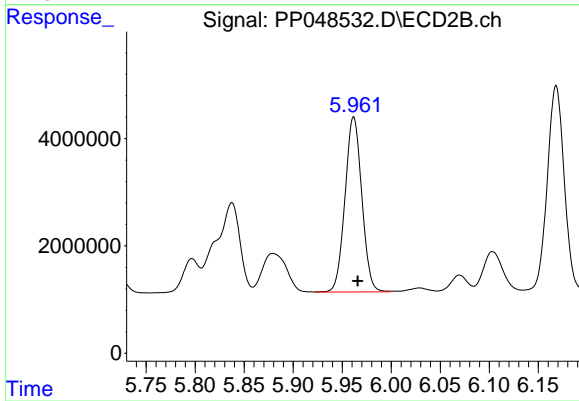
#7 AR-1016-5

R.T.: 4.844 min  
 Delta R.T.: -0.002 min  
 Response: 22535439  
 Conc: 441.88 ng/ml



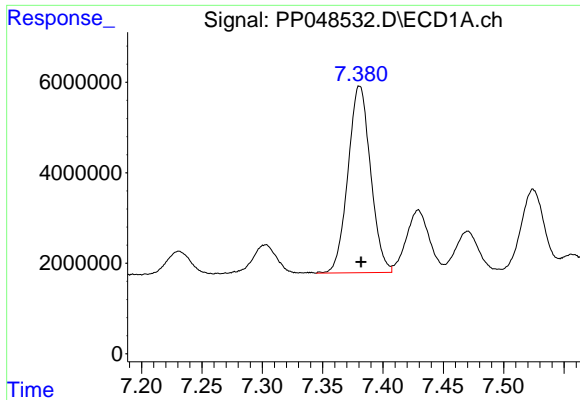
#31 AR-1260-1

R.T.: 7.093 min  
 Delta R.T.: 0.000 min  
 Response: 46585345  
 Conc: 447.09 ng/ml



#31 AR-1260-1

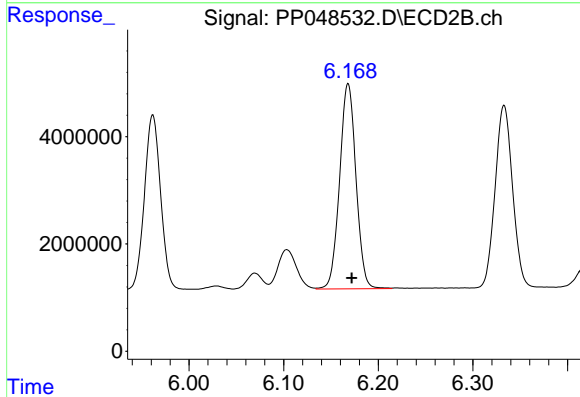
R.T.: 5.962 min  
 Delta R.T.: -0.004 min  
 Response: 38918753  
 Conc: 461.23 ng/ml



#32 AR-1260-2

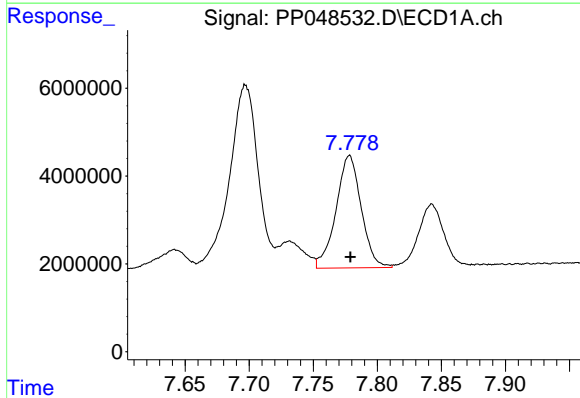
R.T.: 7.381 min  
 Delta R.T.: -0.001 min  
 Response: 53695112  
 Conc: 440.97 ng/ml

Instrument :  
 ECD\_P  
 ClientSampleId :  
 PB145369BS



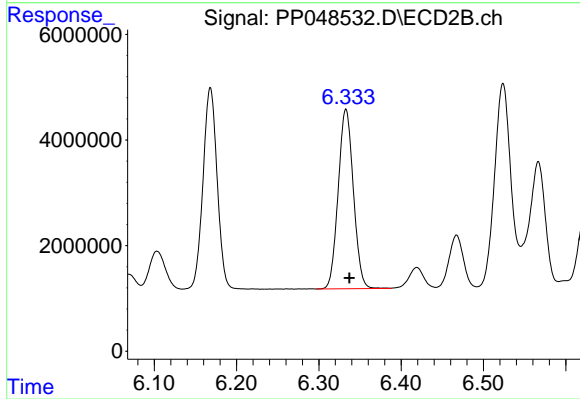
#32 AR-1260-2

R.T.: 6.168 min  
 Delta R.T.: -0.004 min  
 Response: 45955404  
 Conc: 448.66 ng/ml



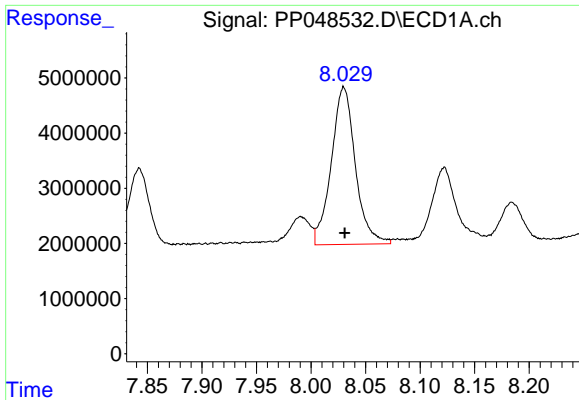
#33 AR-1260-3

R.T.: 7.778 min  
 Delta R.T.: 0.000 min  
 Response: 35014780  
 Conc: 413.59 ng/ml



#33 AR-1260-3

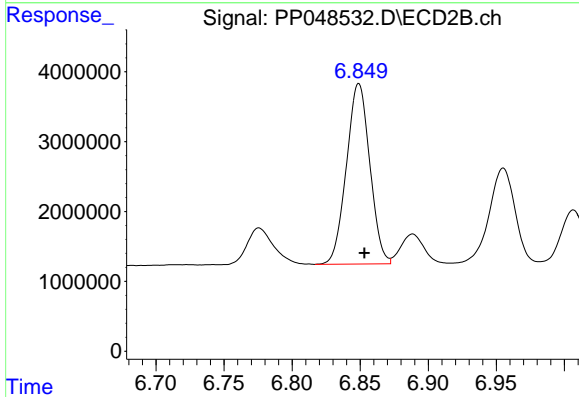
R.T.: 6.333 min  
 Delta R.T.: -0.004 min  
 Response: 43631086  
 Conc: 450.21 ng/ml



#34 AR-1260-4

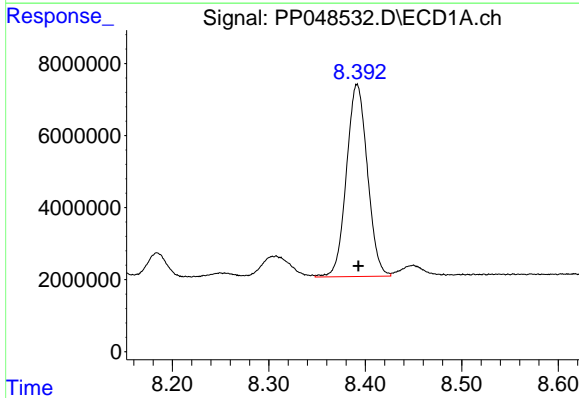
R.T.: 8.030 min  
 Delta R.T.: 0.000 min  
 Response: 43845296  
 Conc: 423.78 ng/ml

Instrument :  
 ECD\_P  
 ClientSampleId :  
 PB145369BS



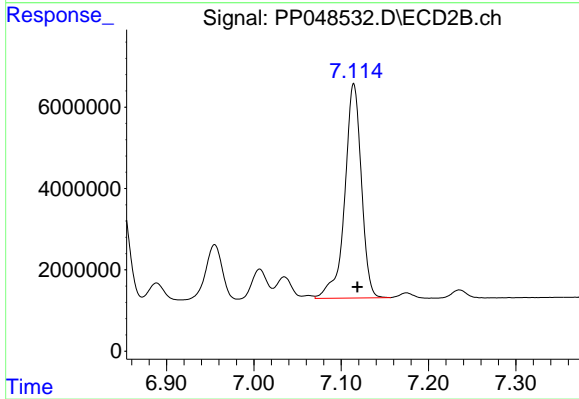
#34 AR-1260-4

R.T.: 6.849 min  
 Delta R.T.: -0.004 min  
 Response: 30852761  
 Conc: 435.91 ng/ml



#35 AR-1260-5

R.T.: 8.392 min  
 Delta R.T.: -0.001 min  
 Response: 80595639  
 Conc: 411.71 ng/ml



#35 AR-1260-5

R.T.: 7.114 min  
 Delta R.T.: -0.004 min  
 Response: 69728294  
 Conc: 434.20 ng/ml