

Data Path : Z:\pestpcbsrv\HPCHEM1\ECD\_P\Data\PP060822\  
 Data File : PP048552.D  
 Signal(s) : Signal #1: ECD1A.ch Signal #2: ECD2B.ch  
 Acq On : 08 Jun 2022 02:54  
 Operator : YP\AJ  
 Sample : N3175-04  
 Misc :  
 ALS Vial : 51 Sample Multiplier: 1

Instrument :  
 ECD\_P  
 ClientSampleId :  
 AUD-1716

Integration File signal 1: autoint1.e  
 Integration File signal 2: autoint2.e  
 Quant Time: Jun 08 11:09:22 2022  
 Quant Method : Z:\pestpcbsrv\HPCHEM1\ECD\_P\methods\PP060722.M  
 Quant Title : GC EXTRACTABLES  
 QLast Update : Tue Jun 07 11:09:40 2022  
 Response via : Initial Calibration  
 Integrator: ChemStation

Volume Inj. : 2 µl  
 Signal #1 Phase : ZB-MR1 Signal #2 Phase: ZB-MR2  
 Signal #1 Info : 30Mx0.32mmx 0.50µ Signal #2 Info : 30M x 0.32mm x 0.25µm

Compound	RT#1	RT#2	Resp#1	Resp#2	ng/ml	ng/ml
-----						
System Monitoring Compounds						
1) SA Tetrachlo...	4.035	3.203	41568411	37883415	17.348	19.904
2) SA Decachlor...	10.384	8.622	37457144	21765454	19.652	17.774
Target Compounds						
16) L4 AR-1242-1	5.324	4.361	1820292	1558278	26.963	28.008
17) L4 AR-1242-2	5.348	4.382	3115789	2492536	32.062	32.831
18) L4 AR-1242-3	5.414	4.567	2057186	1384385	33.933	32.796
19) L4 AR-1242-4	5.524	4.661	2560613	1500532	50.339	37.288 #
20) L4 AR-1242-5	6.339	5.223	3441961	1611700	64.457	32.631 #
-----						

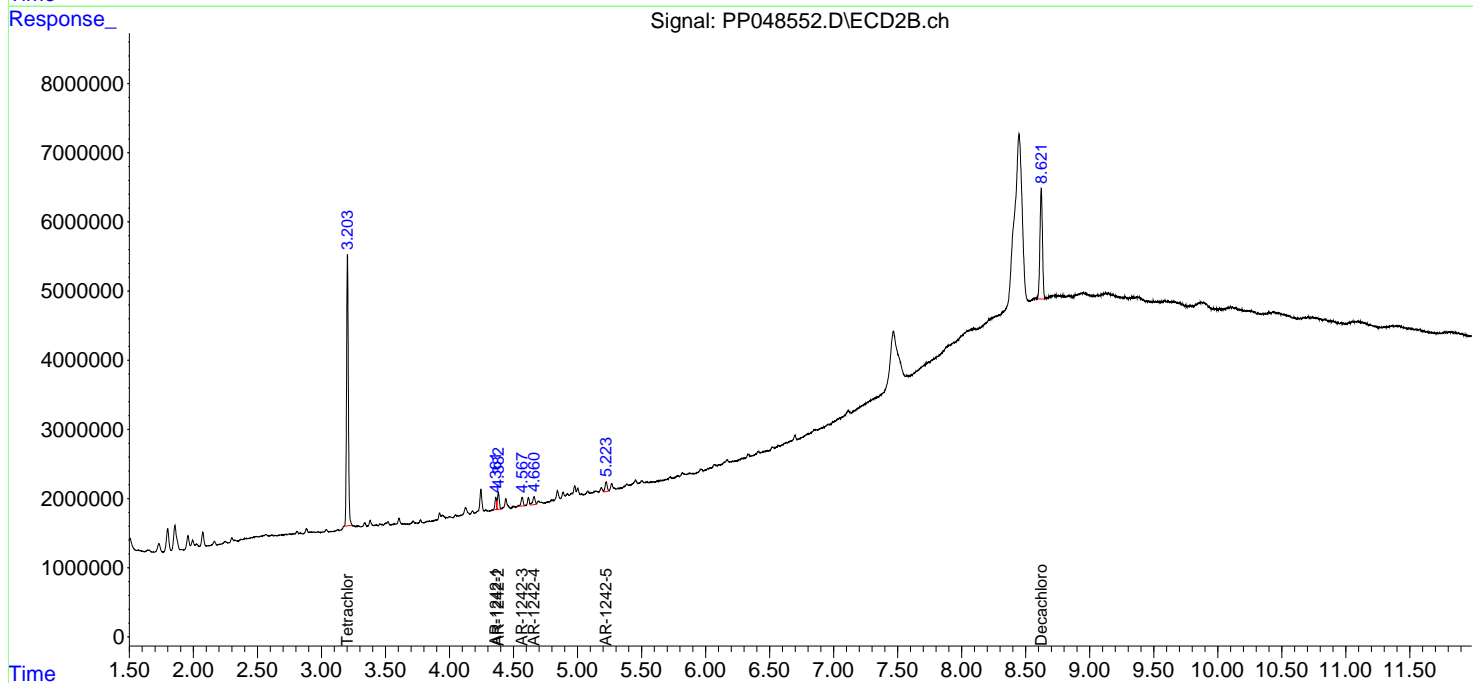
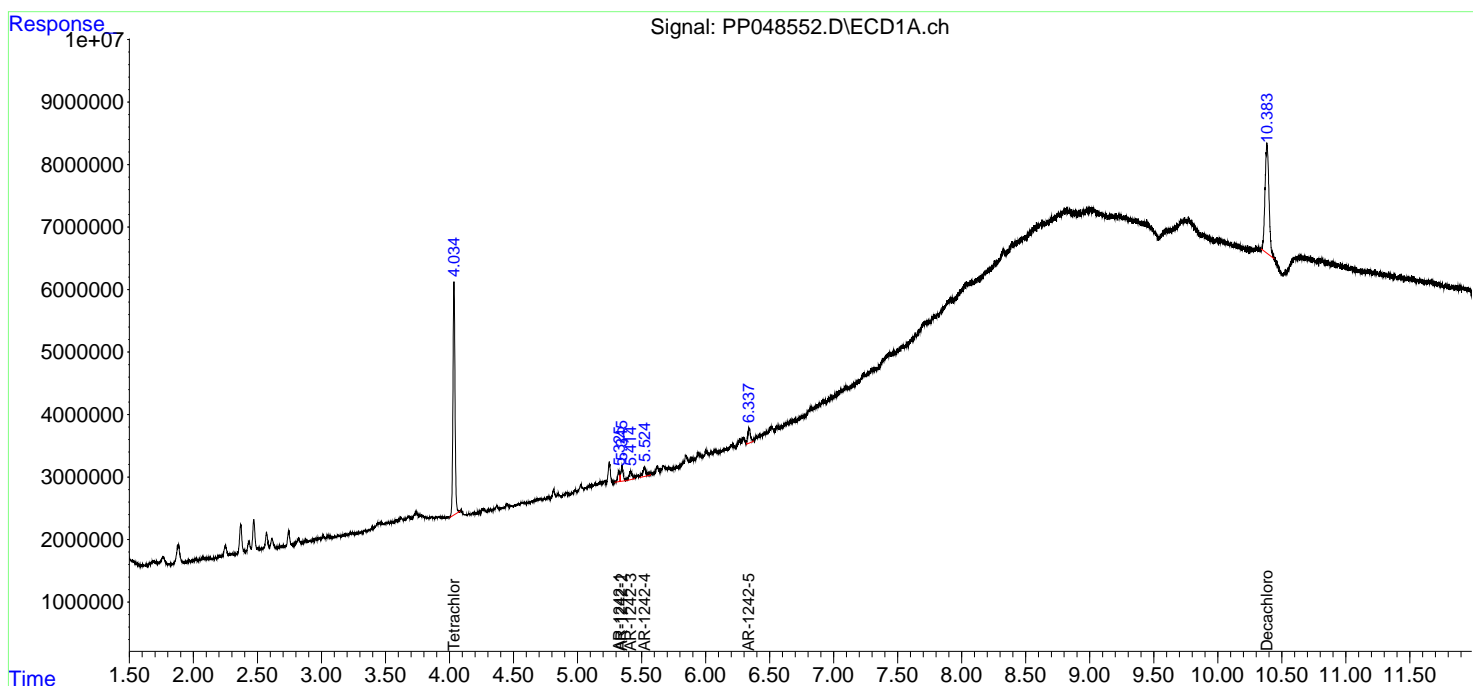
(f)=RT Delta > 1/2 Window (#)=Amounts differ by > 25% (m)=manual int.

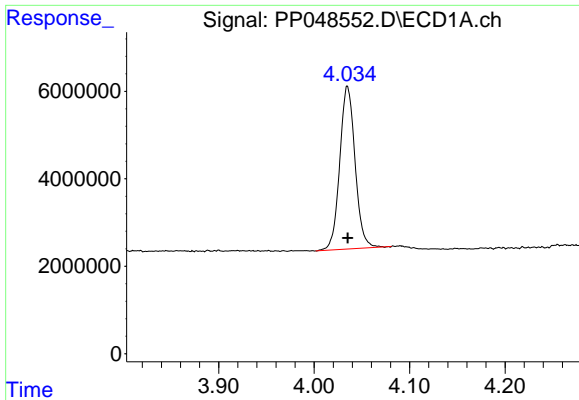
Data Path : Z:\pestpcbsrv\HPCHEM1\ECD\_P\Data\PP060822\  
 Data File : PP048552.D  
 Signal(s) : Signal #1: ECD1A.ch Signal #2: ECD2B.ch  
 Acq On : 08 Jun 2022 02:54  
 Operator : YP\AJ  
 Sample : N3175-04  
 Misc :  
 ALS Vial : 51 Sample Multiplier: 1

Instrument :  
 ECD\_P  
 ClientSampleId :  
 AUD-1716

Integration File signal 1: autoint1.e  
 Integration File signal 2: autoint2.e  
 Quant Time: Jun 08 11:09:22 2022  
 Quant Method : Z:\pestpcbsrv\HPCHEM1\ECD\_P\methods\PP060722.M  
 Quant Title : GC EXTRACTABLES  
 QLast Update : Tue Jun 07 11:09:40 2022  
 Response via : Initial Calibration  
 Integrator: ChemStation

Volume Inj. : 2 µl  
 Signal #1 Phase : ZB-MR1 Signal #2 Phase: ZB-MR2  
 Signal #1 Info : 30Mx0.32mmx 0.50µ Signal #2 Info : 30M x 0.32mm x 0.25µm

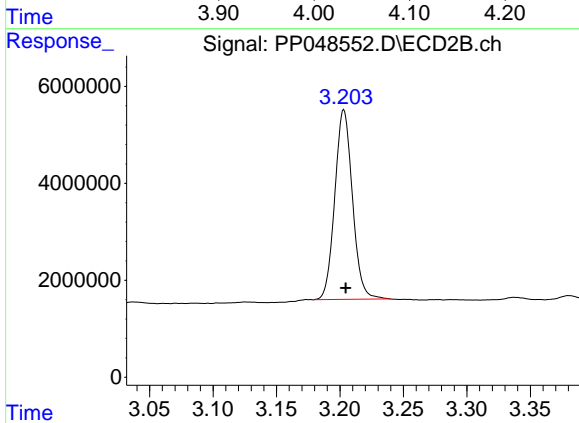




#1 Tetrachloro-m-xylene

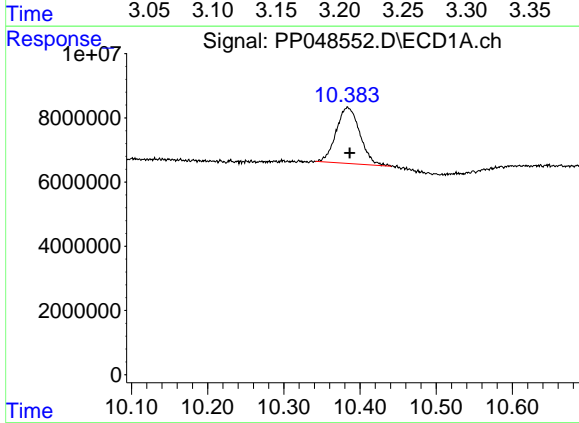
R.T.: 4.035 min  
 Delta R.T.: 0.000 min  
 Response: 41568411  
 Conc: 17.35 ng/ml

Instrument :  
 ECD\_P  
 ClientSampleId :  
 AUD-1716



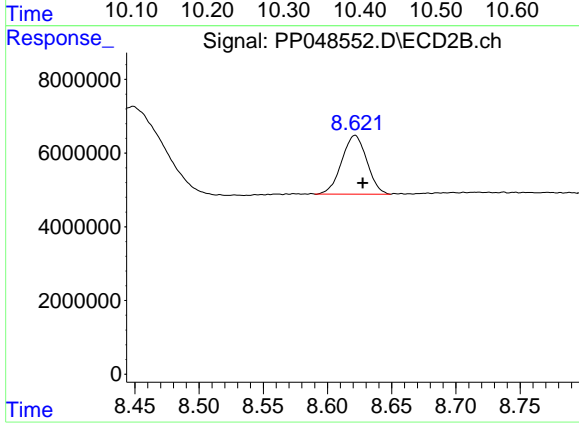
#1 Tetrachloro-m-xylene

R.T.: 3.203 min  
 Delta R.T.: -0.002 min  
 Response: 37883415  
 Conc: 19.90 ng/ml



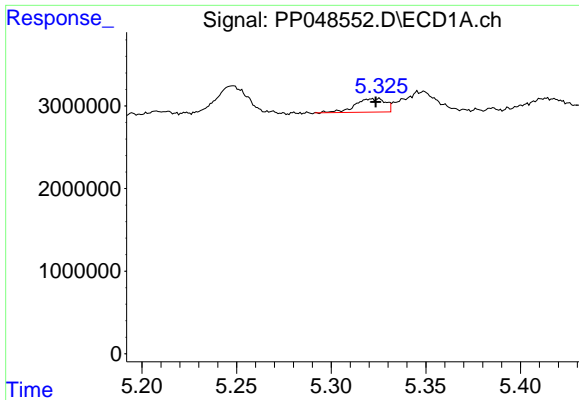
#2 Decachlorobiphenyl

R.T.: 10.384 min  
 Delta R.T.: -0.003 min  
 Response: 37457144  
 Conc: 19.65 ng/ml



#2 Decachlorobiphenyl

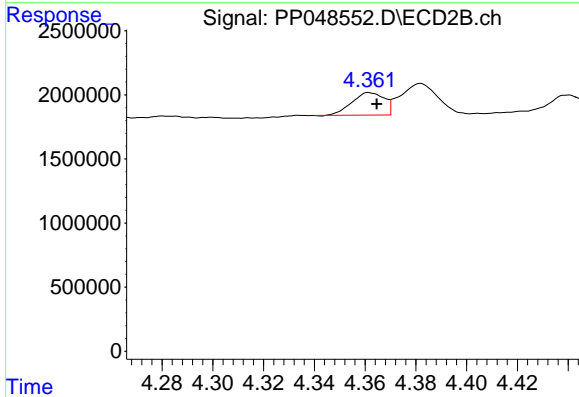
R.T.: 8.622 min  
 Delta R.T.: -0.006 min  
 Response: 21765454  
 Conc: 17.77 ng/ml



#16 AR-1242-1

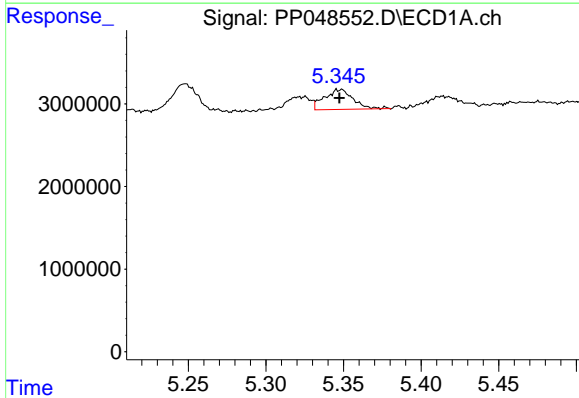
R.T.: 5.324 min  
 Delta R.T.: 0.000 min  
 Response: 1820292  
 Conc: 26.96 ng/ml

Instrument :  
 ECD\_P  
 ClientSampleId :  
 AUD-1716



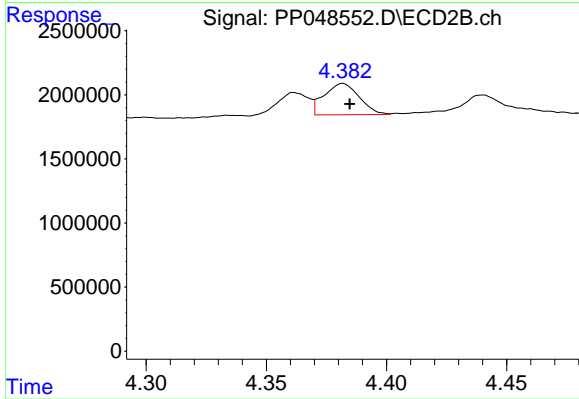
#16 AR-1242-1

R.T.: 4.361 min  
 Delta R.T.: -0.003 min  
 Response: 1558278  
 Conc: 28.01 ng/ml



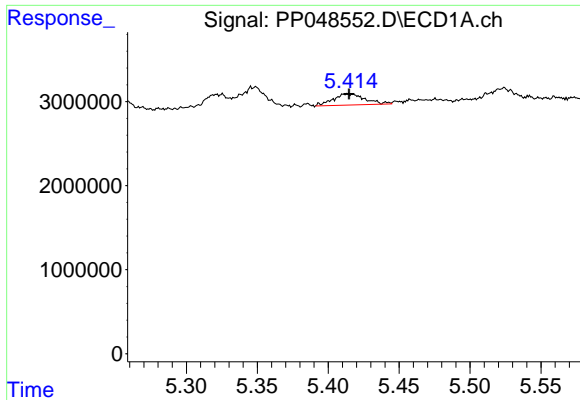
#17 AR-1242-2

R.T.: 5.348 min  
 Delta R.T.: 0.000 min  
 Response: 3115789  
 Conc: 32.06 ng/ml



#17 AR-1242-2

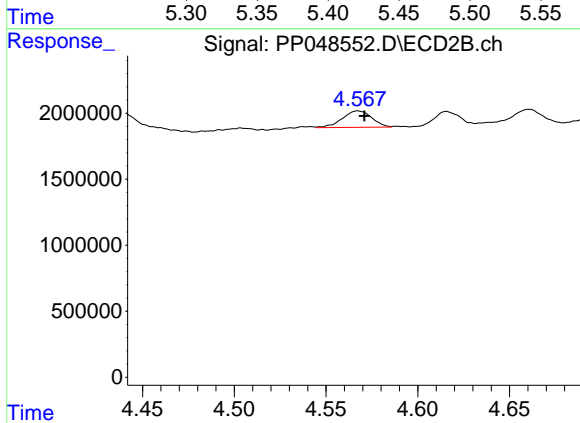
R.T.: 4.382 min  
 Delta R.T.: -0.003 min  
 Response: 2492536  
 Conc: 32.83 ng/ml



#18 AR-1242-3

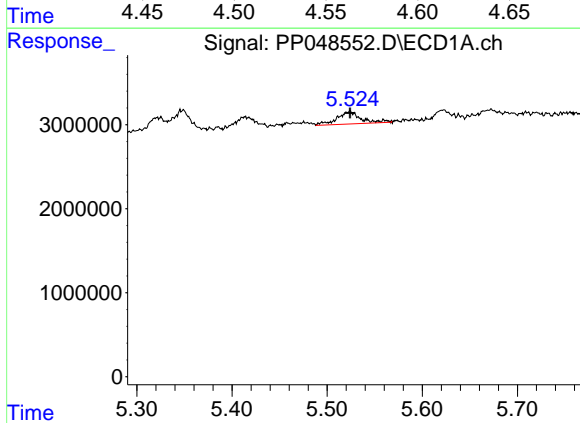
R.T.: 5.414 min  
 Delta R.T.: -0.001 min  
 Response: 2057186  
 Conc: 33.93 ng/ml

Instrument :  
 ECD\_P  
 ClientSampleId :  
 AUD-1716



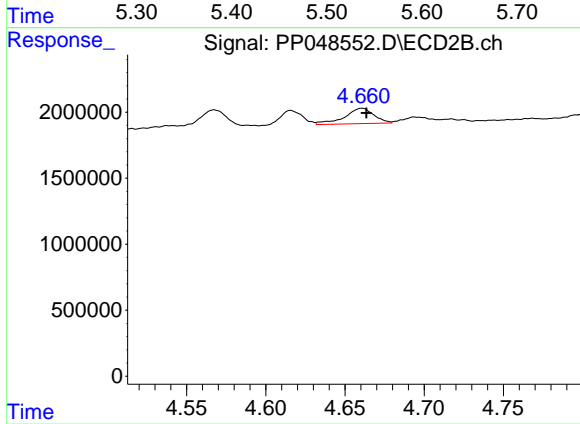
#18 AR-1242-3

R.T.: 4.567 min  
 Delta R.T.: -0.003 min  
 Response: 1384385  
 Conc: 32.80 ng/ml



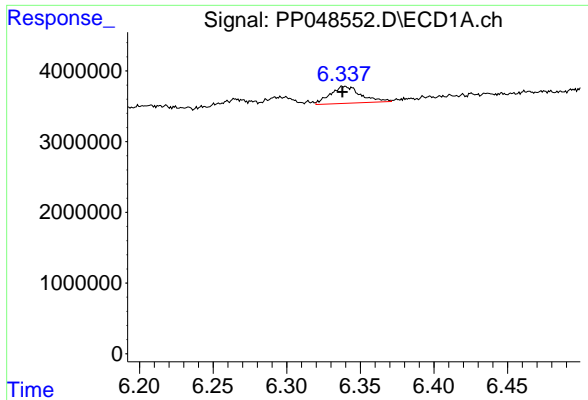
#19 AR-1242-4

R.T.: 5.524 min  
 Delta R.T.: 0.000 min  
 Response: 2560613  
 Conc: 50.34 ng/ml



#19 AR-1242-4

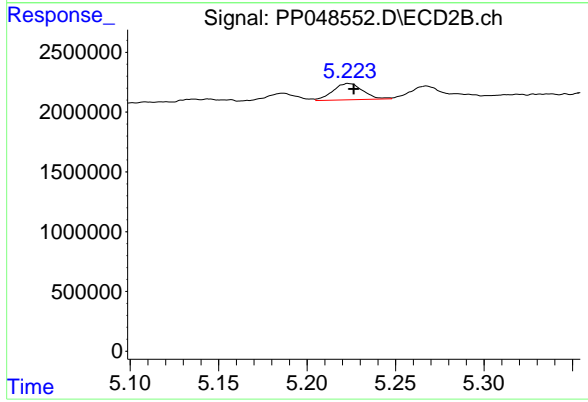
R.T.: 4.661 min  
 Delta R.T.: -0.003 min  
 Response: 1500532  
 Conc: 37.29 ng/ml



#20 AR-1242-5

R.T.: 6.339 min  
Delta R.T.: 0.001 min  
Response: 3441961  
Conc: 64.46 ng/ml

Instrument :  
ECD\_P  
ClientSampleId :  
AUD-1716



#20 AR-1242-5

R.T.: 5.223 min  
Delta R.T.: -0.003 min  
Response: 1611700  
Conc: 32.63 ng/ml