

Data Path : Z:\pestpcbsrv\HPCHEM1\ECD_P\Data\PP080622\
 Data File : PP050226.D
 Signal(s) : Signal #1: ECD1A.ch Signal #2: ECD2B.ch
 Acq On : 06 Aug 2022 05:48
 Operator : YP\AJ
 Sample : AR1268ICC050
 Misc :
 ALS Vial : 30 Sample Multiplier: 1

Instrument :
 ECD_P
ClientSampleId :
 AR1268ICC050

Integration File signal 1: autoint1.e
 Integration File signal 2: autoint2.e
 Quant Time: Aug 07 01:49:01 2022
 Quant Method : Z:\pestpcbsrv\HPCHEM1\ECD_P\methods\PP080622.M
 Quant Title : GC EXTRACTABLES
 QLast Update : Sun Aug 07 01:48:53 2022
 Response via : Initial Calibration
 Integrator: ChemStation

Volume Inj. : 2 µl
 Signal #1 Phase : ZB-MR2 Signal #2 Phase: ZB-MR2
 Signal #1 Info : 30Mx0.32mmx 0.50µ Signal #2 Info : 30M x 0.32mm x 0.25µm

Compound	RT#1	RT#2	Resp#1	Resp#2	ng/ml	ng/ml

System Monitoring Compounds						
1) SA Tetrachlo...	4.344	3.591	7772722	14773283	4.809	4.464
2) SA Decachlor...	10.090	8.554	14542472	13103757	4.738	4.873
Target Compounds						
41) L9 AR-1268-1	8.597	7.470	12140592	11232896	47.815	51.120
42) L9 AR-1268-2	8.692	7.534	12539444	9987302	51.407	50.144
43) L9 AR-1268-3	8.915	7.739	9264566	8200949	46.651	48.444
44) L9 AR-1268-4	9.348	8.026	3960416	3270064	45.950	46.024
45) L9 AR-1268-5	9.758	8.309	32225949	25114288	48.318	45.613

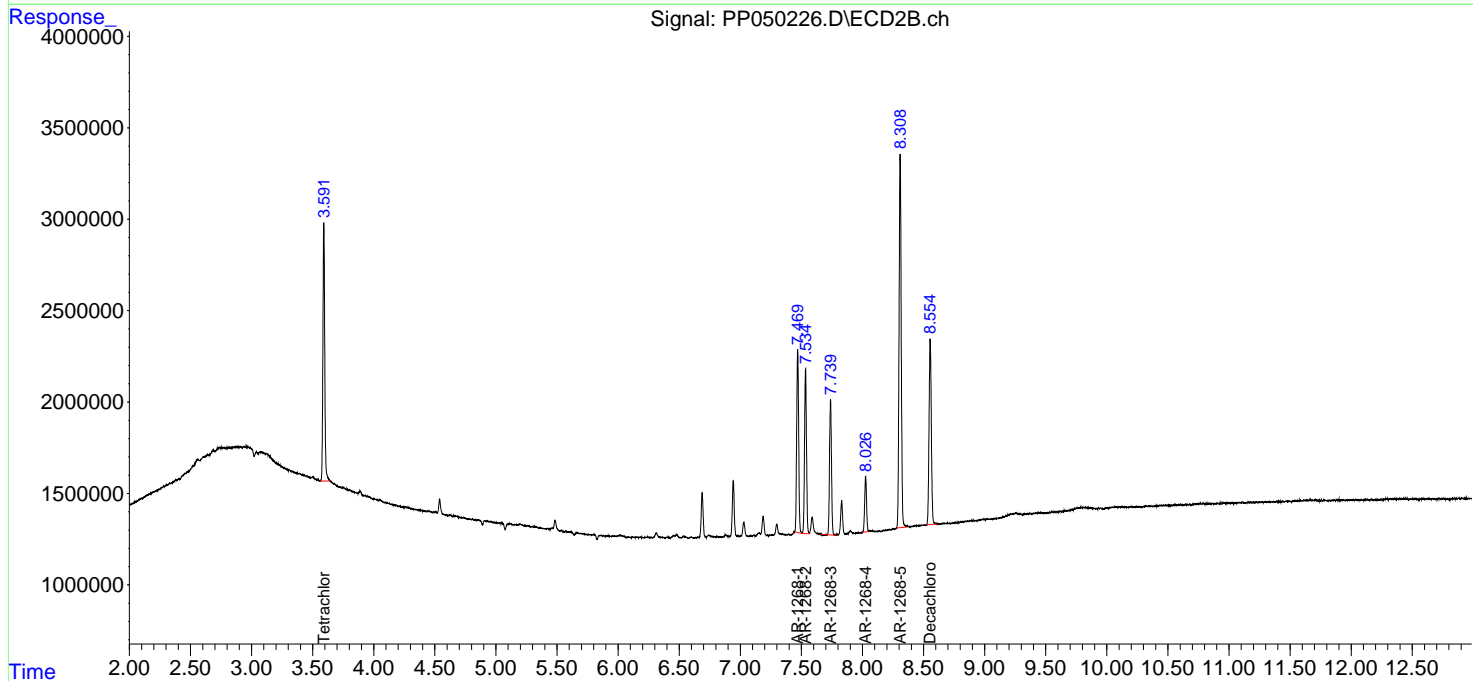
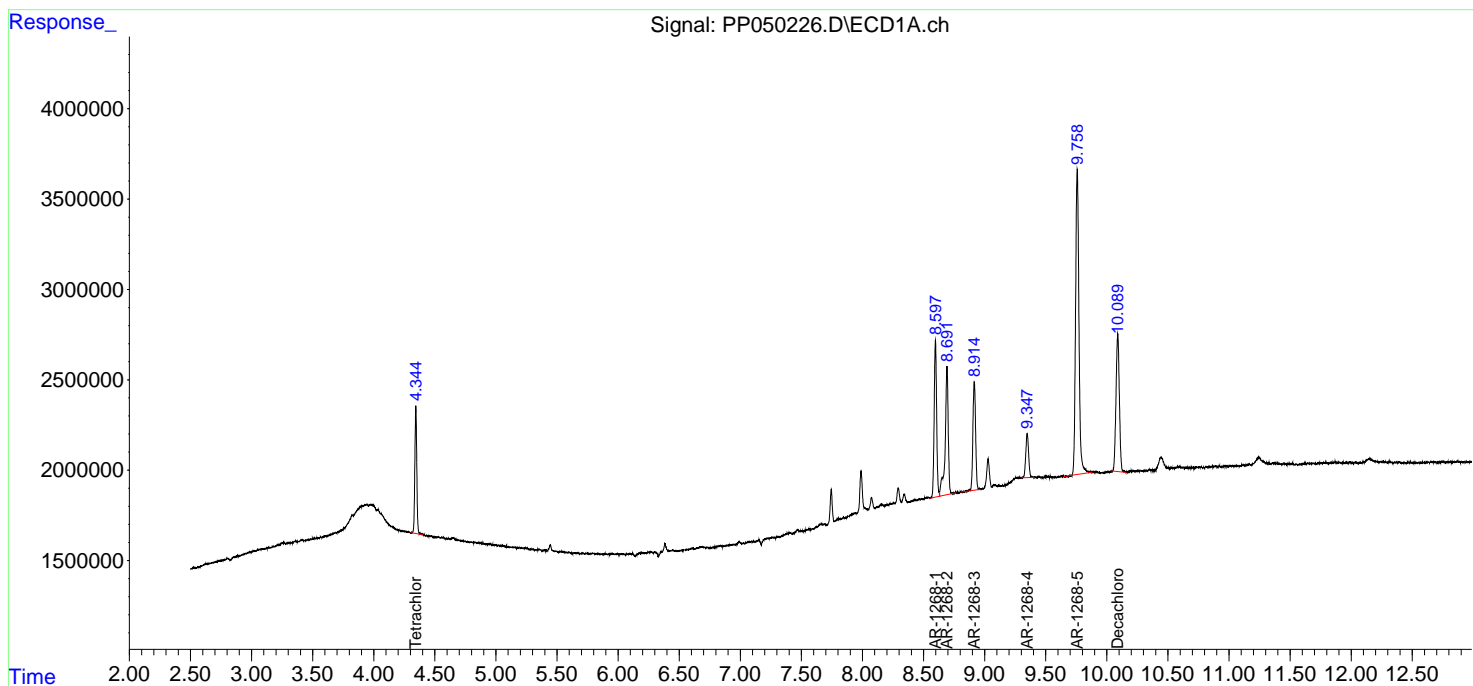
(f)=RT Delta > 1/2 Window (#)=Amounts differ by > 25% (m)=manual int.

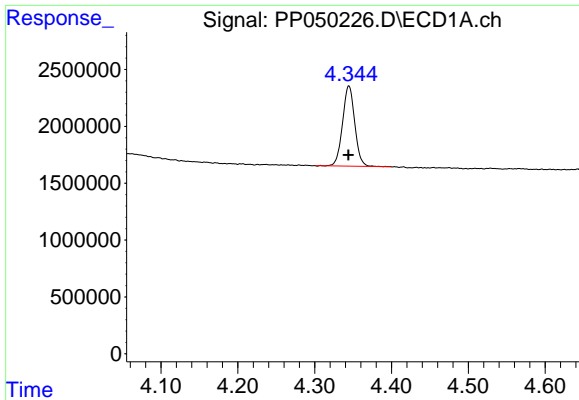
Data Path : Z:\pestpcbsrv\HPCHEM1\ECD_P\Data\PP080622\
 Data File : PP050226.D
 Signal(s) : Signal #1: ECD1A.ch Signal #2: ECD2B.ch
 Acq On : 06 Aug 2022 05:48
 Operator : YP\AJ
 Sample : AR1268ICC050
 Misc :
 ALS Vial : 30 Sample Multiplier: 1

Instrument :
 ECD_P
 ClientSampleId :
 AR1268ICC050

Integration File signal 1: autoint1.e
 Integration File signal 2: autoint2.e
 Quant Time: Aug 07 01:49:01 2022
 Quant Method : Z:\pestpcbsrv\HPCHEM1\ECD_P\methods\PP080622.M
 Quant Title : GC EXTRACTABLES
 QLast Update : Sun Aug 07 01:48:53 2022
 Response via : Initial Calibration
 Integrator: ChemStation

Volume Inj. : 2 µl
 Signal #1 Phase : ZB-MR1 Signal #2 Phase: ZB-MR2
 Signal #1 Info : 30Mx0.32mmx 0.50µ Signal #2 Info : 30M x 0.32mm x 0.25µm

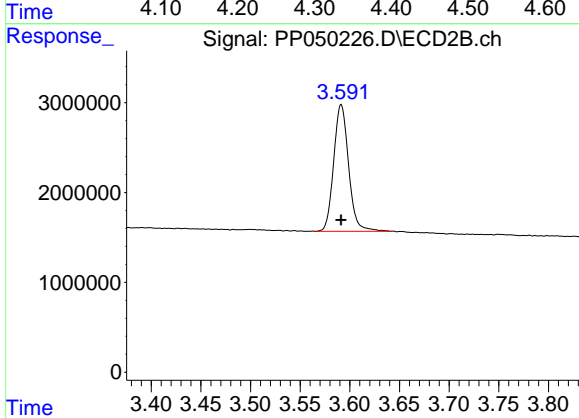




#1 Tetrachloro-m-xylene

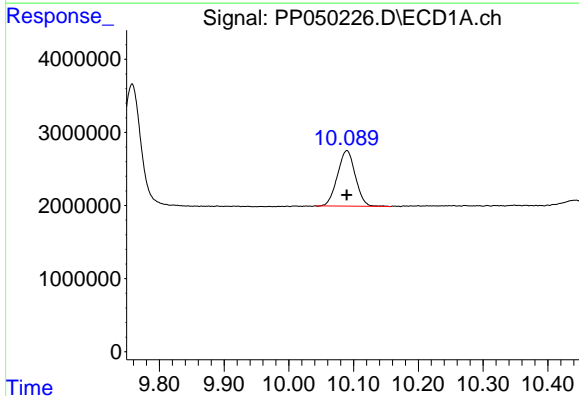
R.T.: 4.344 min
 Delta R.T.: 0.000 min
 Response: 7772722
 Conc: 4.81 ng/ml

Instrument :
 ECD_P
 ClientSampleId :
 AR1268IC050



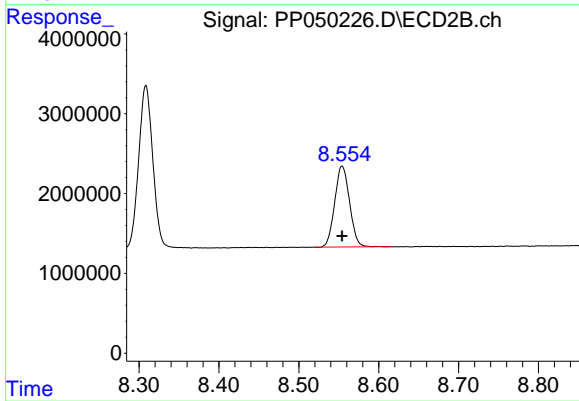
#1 Tetrachloro-m-xylene

R.T.: 3.591 min
 Delta R.T.: 0.000 min
 Response: 14773283
 Conc: 4.46 ng/ml



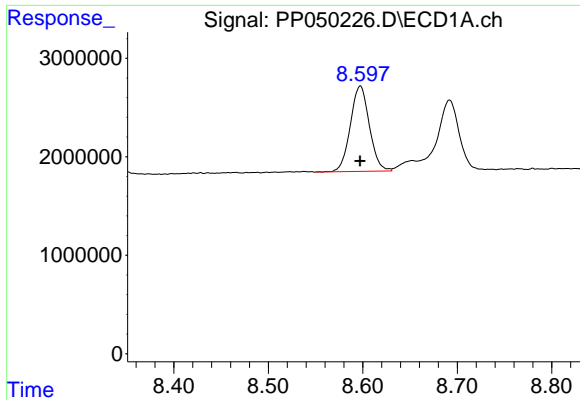
#2 Decachlorobiphenyl

R.T.: 10.090 min
 Delta R.T.: 0.000 min
 Response: 14542472
 Conc: 4.74 ng/ml



#2 Decachlorobiphenyl

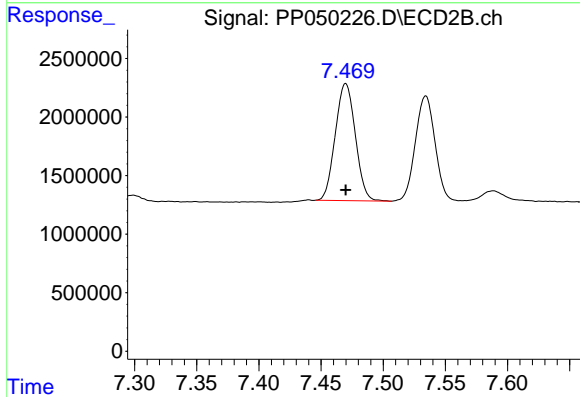
R.T.: 8.554 min
 Delta R.T.: 0.000 min
 Response: 13103757
 Conc: 4.87 ng/ml



#41 AR-1268-1

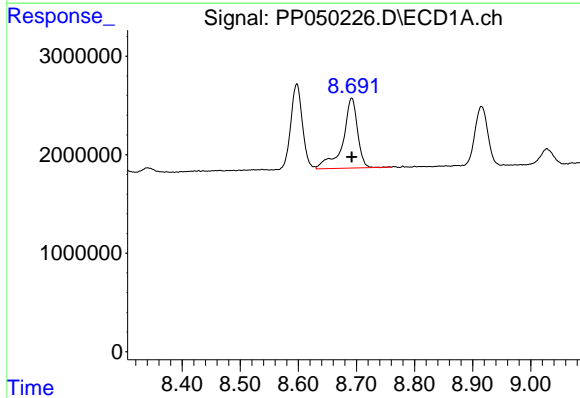
R.T.: 8.597 min
 Delta R.T.: 0.000 min
 Response: 12140592
 Conc: 47.82 ng/ml

Instrument :
 ECD_P
 ClientSampleId :
 AR1268ICC050



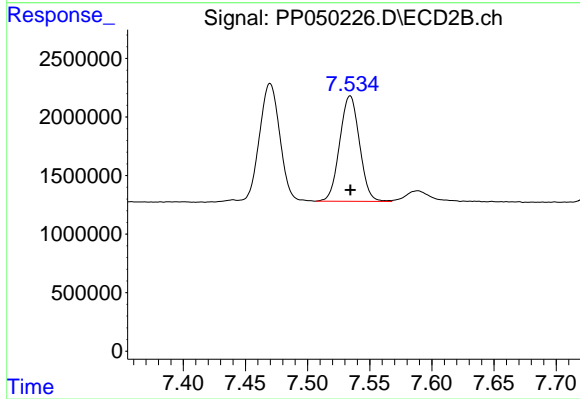
#41 AR-1268-1

R.T.: 7.470 min
 Delta R.T.: 0.000 min
 Response: 11232896
 Conc: 51.12 ng/ml



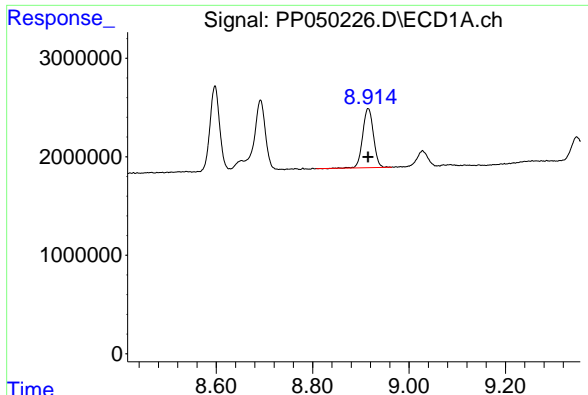
#42 AR-1268-2

R.T.: 8.692 min
 Delta R.T.: 0.000 min
 Response: 12539444
 Conc: 51.41 ng/ml



#42 AR-1268-2

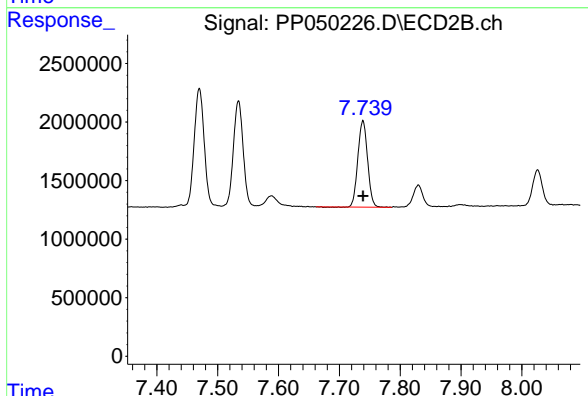
R.T.: 7.534 min
 Delta R.T.: 0.000 min
 Response: 9987302
 Conc: 50.14 ng/ml



#43 AR-1268-3

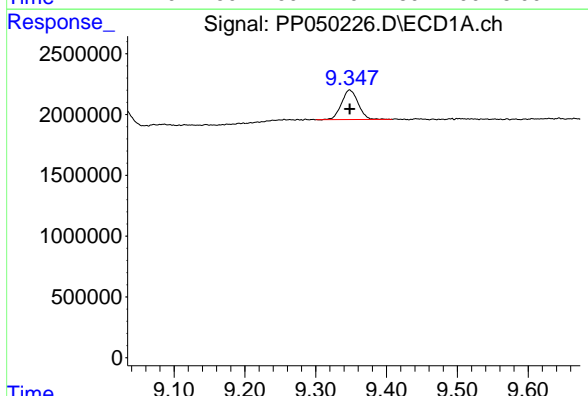
R.T.: 8.915 min
 Delta R.T.: 0.000 min
 Response: 9264566
 Conc: 46.65 ng/ml

Instrument :
 ECD_P
 ClientSampleId :
 AR1268ICC050



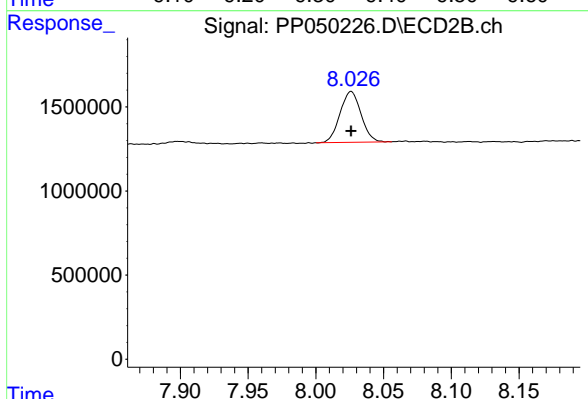
#43 AR-1268-3

R.T.: 7.739 min
 Delta R.T.: 0.000 min
 Response: 8200949
 Conc: 48.44 ng/ml



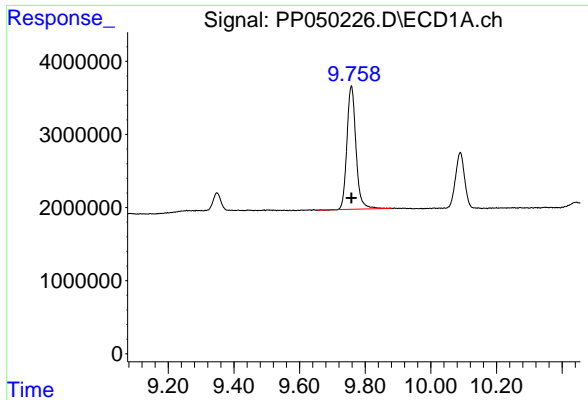
#44 AR-1268-4

R.T.: 9.348 min
 Delta R.T.: 0.000 min
 Response: 3960416
 Conc: 45.95 ng/ml



#44 AR-1268-4

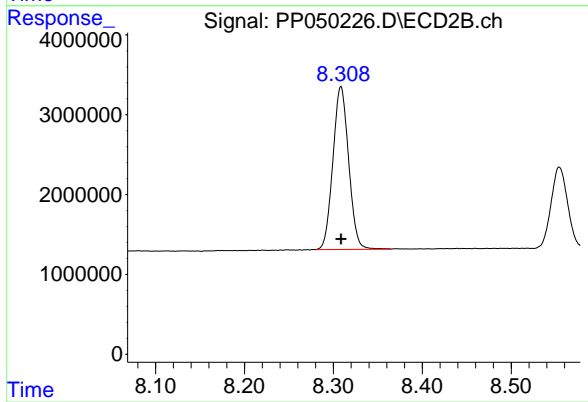
R.T.: 8.026 min
 Delta R.T.: 0.000 min
 Response: 3270064
 Conc: 46.02 ng/ml



#45 AR-1268-5

R.T.: 9.758 min
Delta R.T.: 0.000 min
Response: 32225949
Conc: 48.32 ng/ml

Instrument :
ECD_P
ClientSampleId :
AR1268ICC050



#45 AR-1268-5

R.T.: 8.309 min
Delta R.T.: 0.000 min
Response: 25114288
Conc: 45.61 ng/ml