

Data Path : Z:\pestpcbsrv\HPCHEM1\ECD\_P\Data\PP080622\  
 Data File : PP050283.D  
 Signal(s) : Signal #1: ECD1A.ch Signal #2: ECD2B.ch  
 Acq On : 06 Aug 2022 23:31  
 Operator : YP\AJ  
 Sample : N4064-04  
 Misc :  
 ALS Vial : 77 Sample Multiplier: 1

Instrument :  
 ECD\_P  
 ClientSampleId :  
 SB-16

Integration File signal 1: autoint1.e  
 Integration File signal 2: autoint2.e  
 Quant Time: Aug 08 00:45:26 2022  
 Quant Method : Z:\pestpcbsrv\HPCHEM1\ECD\_P\methods\PP080622.M  
 Quant Title : GC EXTRACTABLES  
 QLast Update : Sun Aug 07 23:52:23 2022  
 Response via : Initial Calibration  
 Integrator: ChemStation

Volume Inj. : 2 µl  
 Signal #1 Phase : ZB-MR1 Signal #2 Phase: ZB-MR2  
 Signal #1 Info : 30Mx0.32mmx 0.50µ Signal #2 Info : 30M x 0.32mm x 0.25µm

Compound	RT#1	RT#2	Resp#1	Resp#2	ng/ml	ng/ml
-----						
System Monitoring Compounds						
1) SA Tetrachlo...	4.345	3.592	35655152	72086569	22.151	23.015
2) SA Decachlor...	10.088	8.553	35746776	29490223	20.300	19.161

Target Compounds

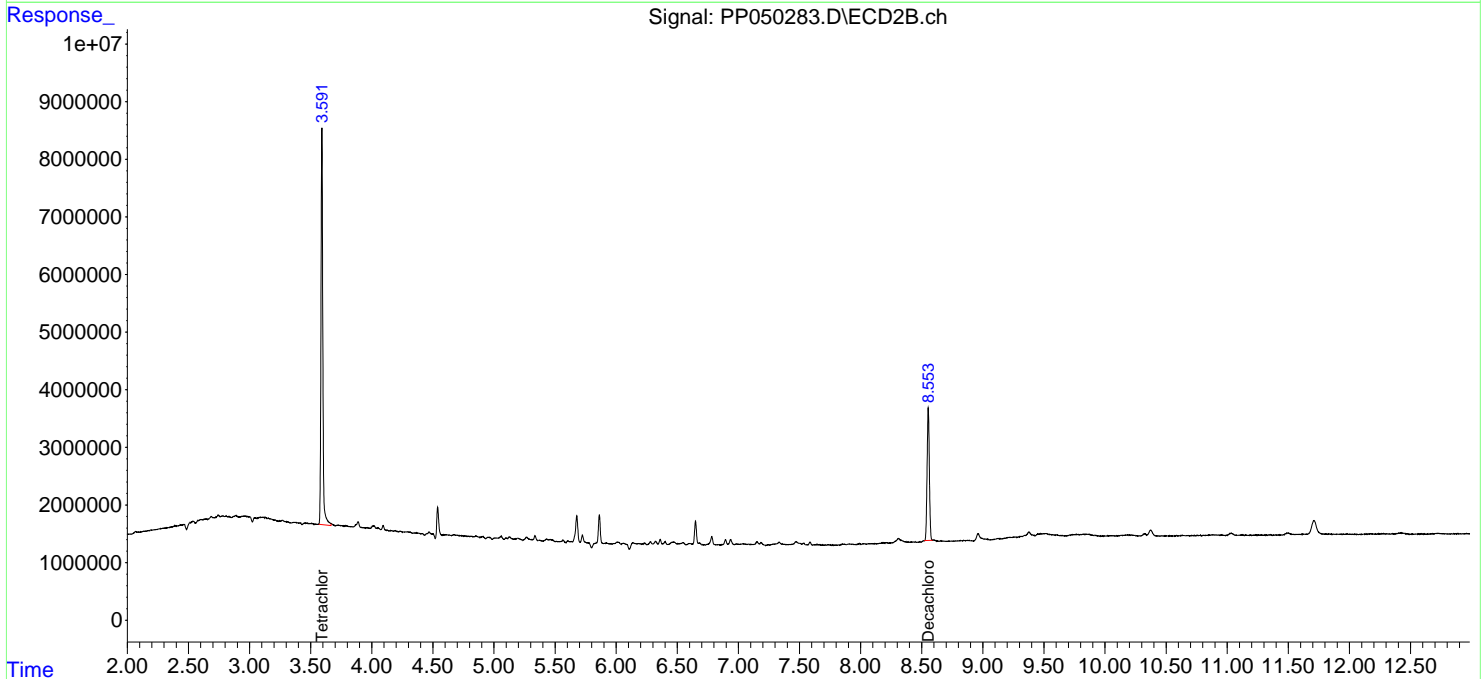
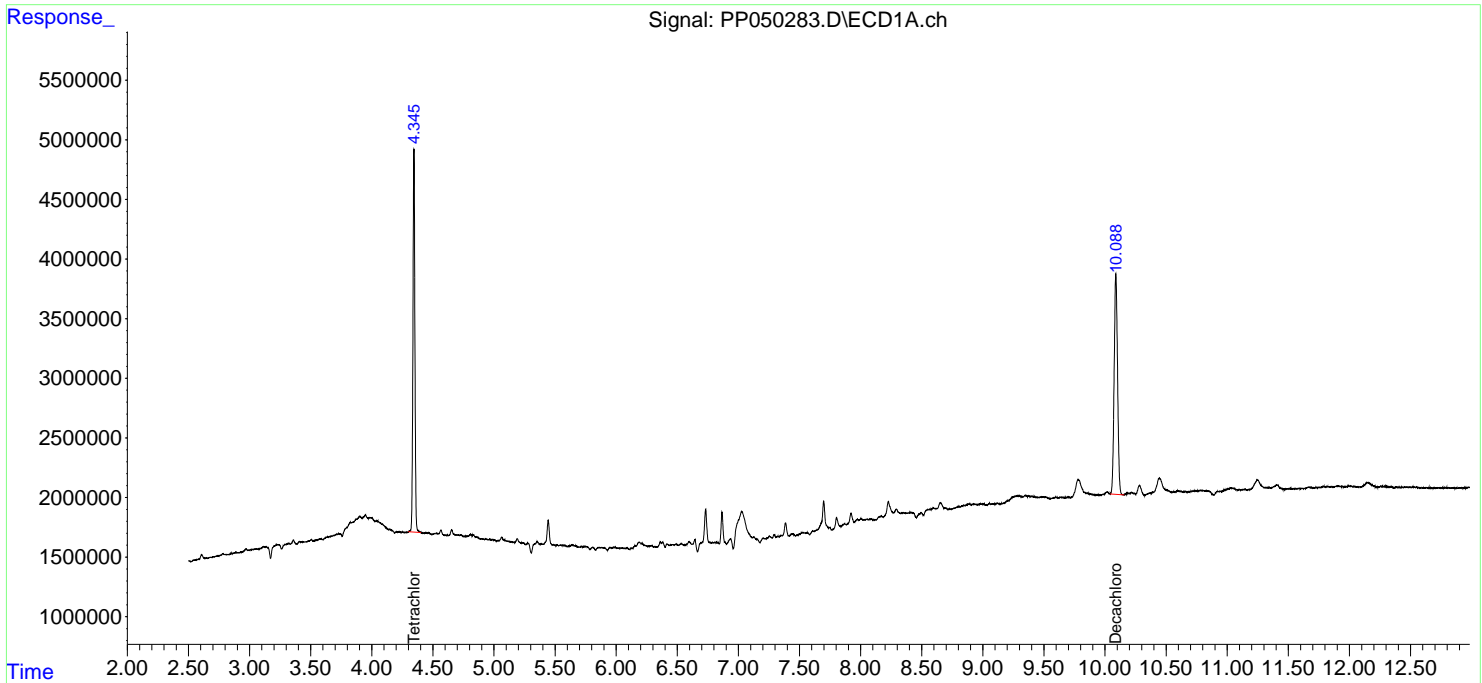
(f)=RT Delta > 1/2 Window (#)=Amounts differ by > 25% (m)=manual int.

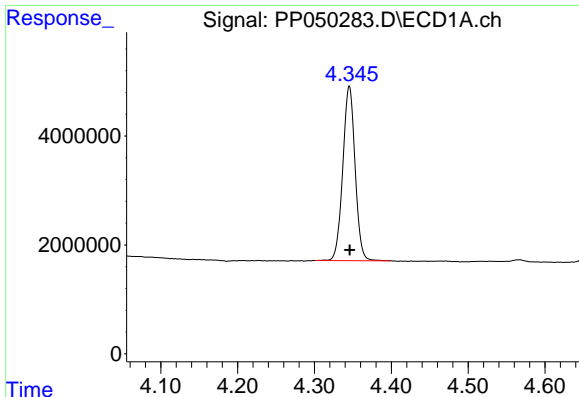
Data Path : Z:\pestpcbsrv\HPCHEM1\ECD\_P\Data\PP080622\  
Data File : PP050283.D  
Signal(s) : Signal #1: ECD1A.ch Signal #2: ECD2B.ch  
Acq On : 06 Aug 2022 23:31  
Operator : YP\AJ  
Sample : N4064-04  
Misc :  
ALS Vial : 77 Sample Multiplier: 1

Instrument :  
ECD\_P  
ClientSampleId :  
SB-16

Integration File signal 1: autoint1.e  
Integration File signal 2: autoint2.e  
Quant Time: Aug 08 00:45:26 2022  
Quant Method : Z:\pestpcbsrv\HPCHEM1\ECD\_P\methods\PP080622.M  
Quant Title : GC EXTRACTABLES  
QLast Update : Sun Aug 07 23:52:23 2022  
Response via : Initial Calibration  
Integrator: ChemStation

Volume Inj. : 2 µl  
Signal #1 Phase : ZB-MR1 Signal #2 Phase: ZB-MR2  
Signal #1 Info : 30Mx0.32mmx 0.50µ Signal #2 Info : 30M x 0.32mm x 0.25µm

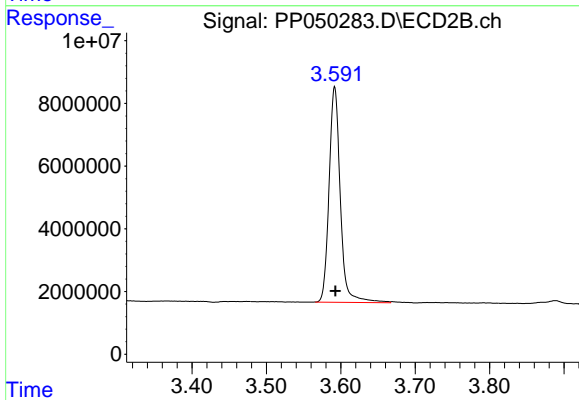




#1 Tetrachloro-m-xylene

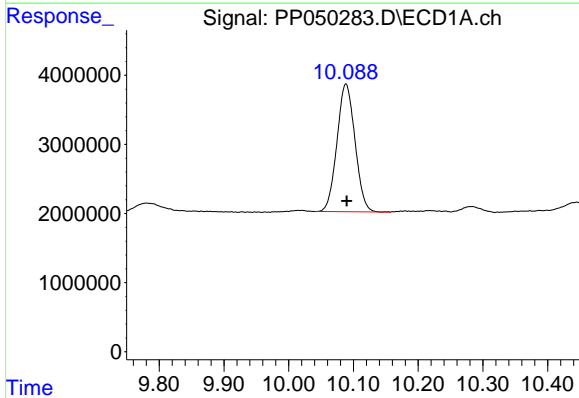
R.T.: 4.345 min  
 Delta R.T.: 0.000 min  
 Response: 35655152  
 Conc: 22.15 ng/ml

Instrument :  
 ECD\_P  
 ClientSampleId :  
 SB-16



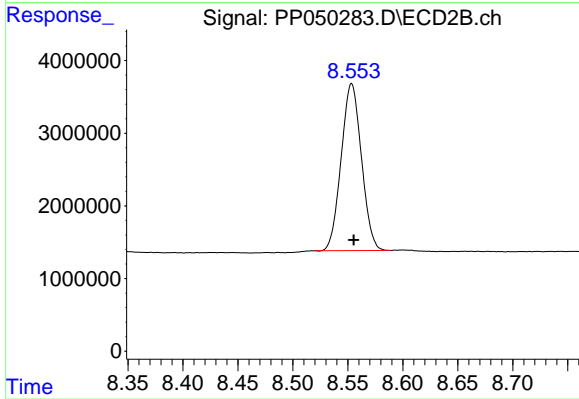
#1 Tetrachloro-m-xylene

R.T.: 3.592 min  
 Delta R.T.: 0.000 min  
 Response: 72086569  
 Conc: 23.01 ng/ml



#2 Decachlorobiphenyl

R.T.: 10.088 min  
 Delta R.T.: -0.001 min  
 Response: 35746776  
 Conc: 20.30 ng/ml



#2 Decachlorobiphenyl

R.T.: 8.553 min  
 Delta R.T.: -0.002 min  
 Response: 29490223  
 Conc: 19.16 ng/ml