

Data Path : Z:\pestpcbsrv\HPCHEM1\ECD_P\Data\PP100324\
 Data File : PP067496.D
 Signal(s) : Signal #1: ECD1A.ch Signal #2: ECD2B.ch
 Acq On : 03 Oct 2024 21:37
 Operator : YP\AJ
 Sample : I.BLK
 Misc :
 ALS Vial : 2 Sample Multiplier: 1

Instrument :
 ECD_P
ClientSampleId :
 I.BLK

Manual Integrations
APPROVED
 Reviewed By :Yogesh Patel 10/04/2024
 Supervised By :Ankita Jodhani 10/04/2024

Integration File signal 1: autoint1.e
 Integration File signal 2: autoint2.e
 Quant Time: Oct 04 01:39:39 2024
 Quant Method : Z:\pestpcbsrv\HPCHEM1\ECD_P\methods\PP092624.M
 Quant Title : GC EXTRACTABLES
 QLast Update : Fri Sep 27 06:59:05 2024
 Response via : Initial Calibration
 Integrator: ChemStation

Volume Inj. : 2 µl
 Signal #1 Phase : ZB-MR1 Signal #2 Phase: ZB-MR2
 Signal #1 Info : 30Mx0.32mmx 0.50µ Signal #2 Info : 30M x 0.32mm x 0.25µm

Compound	RT#1	RT#2	Resp#1	Resp#2	ng/ml	ng/ml

System Monitoring Compounds						
1) SA Tetrachlo...	4.754	4.051	25523034	27867748	18.989	18.651
2) SA Decachlor...	10.663	9.215	26415721	25207058	18.196	18.292m

Target Compounds

(f)=RT Delta > 1/2 Window (#)=Amounts differ by > 25% (m)=manual int.

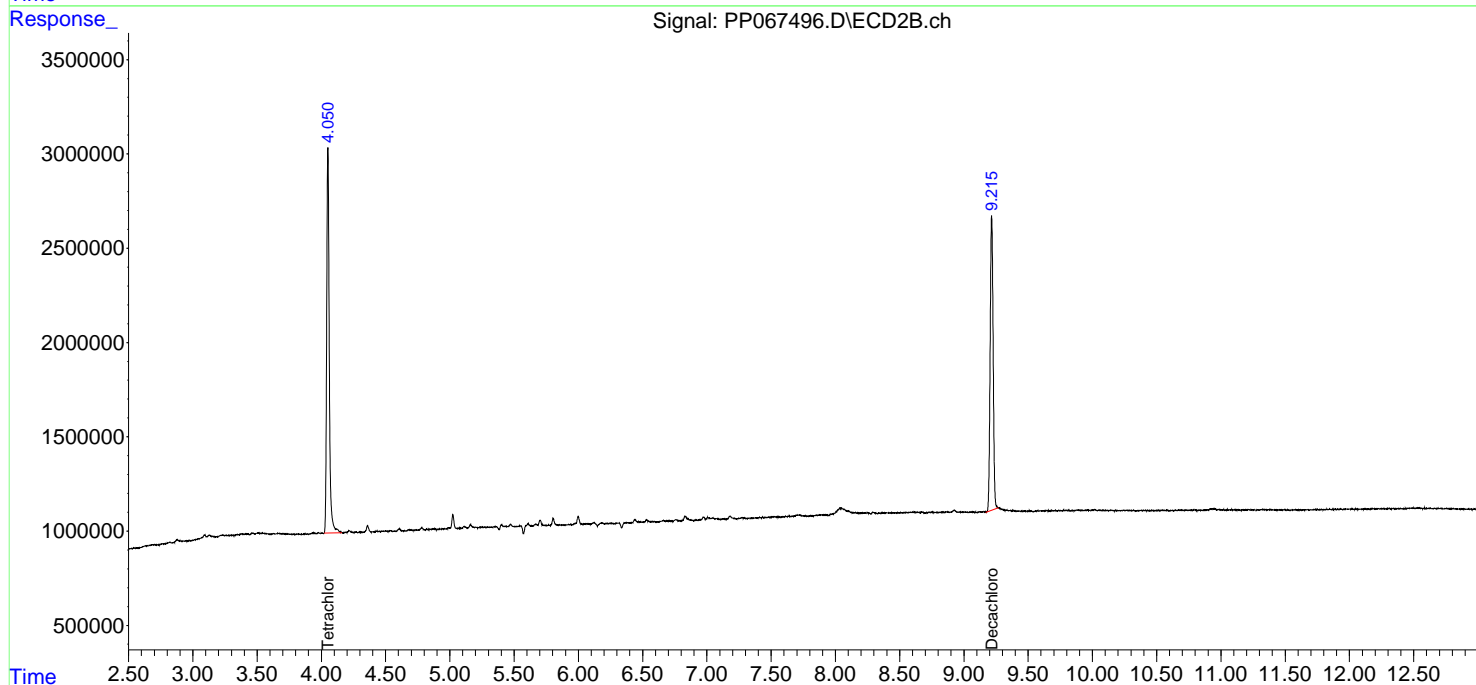
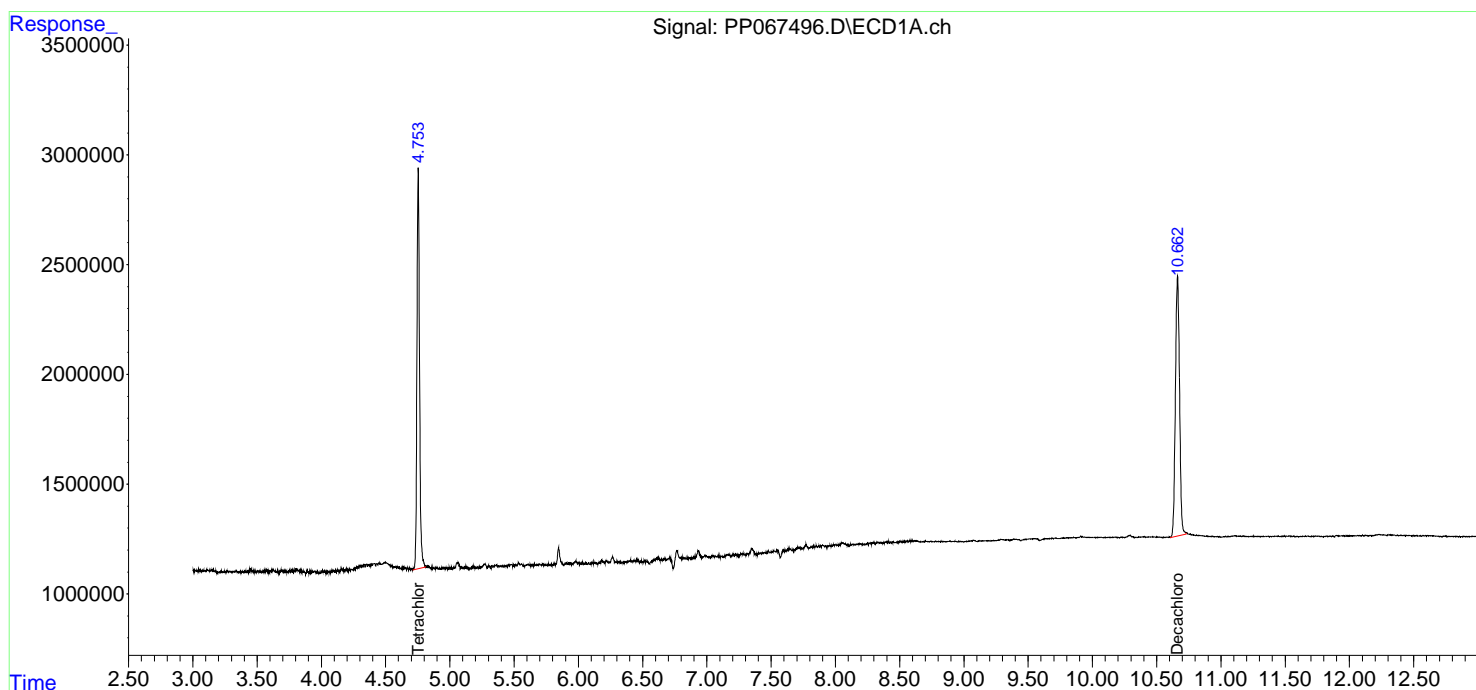
Data Path : Z:\pestpcbsrv\HPCHEM1\ECD_P\Data\PP100324\
Data File : PP067496.D
Signal(s) : Signal #1: ECD1A.ch Signal #2: ECD2B.ch
Acq On : 03 Oct 2024 21:37
Operator : YP\AJ
Sample : I.BLK
Misc :
ALS Vial : 2 Sample Multiplier: 1

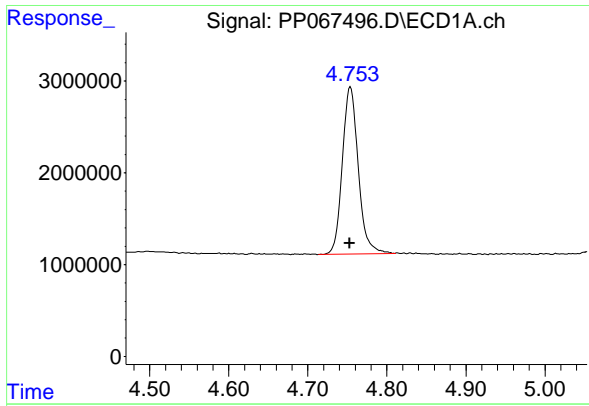
Instrument :
ECD_P
ClientSampleID :
I.BLK

Manual Integrations
APPROVED
Reviewed By :Yogesh Patel 10/04/2024
Supervised By :Ankita Jodhani 10/04/2024

Integration File signal 1: autoint1.e
Integration File signal 2: autoint2.e
Quant Time: Oct 04 01:39:39 2024
Quant Method : Z:\pestpcbsrv\HPCHEM1\ECD_P\methods\PP092624.M
Quant Title : GC EXTRACTABLES
QLast Update : Fri Sep 27 06:59:05 2024
Response via : Initial Calibration
Integrator: ChemStation

Volume Inj. : 2 µl
Signal #1 Phase : ZB-MR1 Signal #2 Phase: ZB-MR2
Signal #1 Info : 30Mx0.32mmx 0.50µm Signal #2 Info : 30M x 0.32mm x 0.25µm





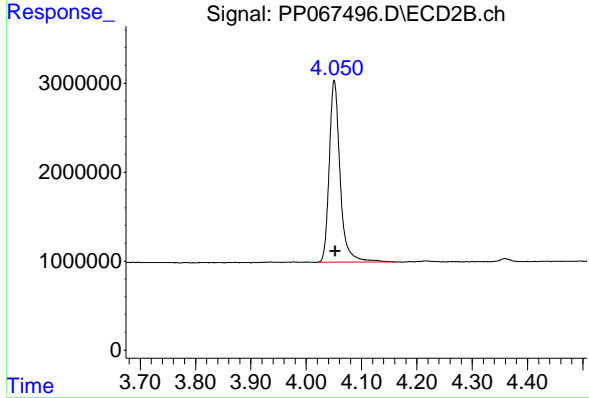
#1 Tetrachloro-m-xylene

R.T.: 4.754 min
 Delta R.T.: 0.000 min
 Response: 25523034
 Conc: 18.99 ng/ml

Instrument : ECD_P
 Client Sample Id : I.BLK

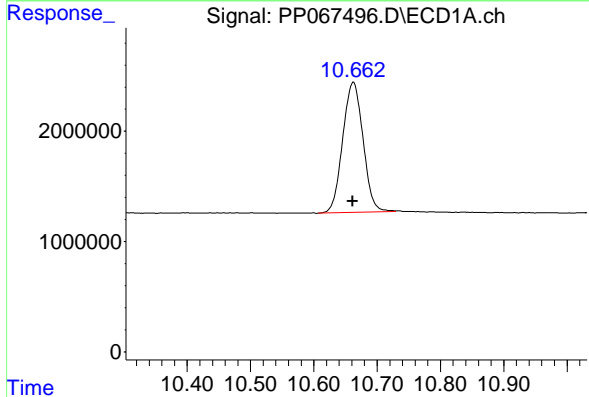
Manual Integrations
 APPROVED

Reviewed By :Yogesh Patel 10/04/2024
 Supervised By :Ankita Jodhani 10/04/2024



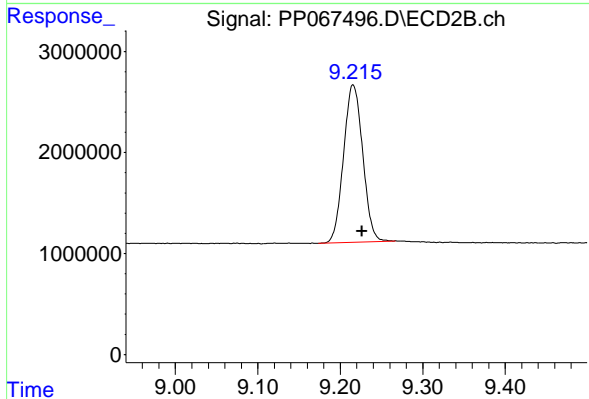
#1 Tetrachloro-m-xylene

R.T.: 4.051 min
 Delta R.T.: -0.002 min
 Response: 27867748
 Conc: 18.65 ng/ml



#2 Decachlorobiphenyl

R.T.: 10.663 min
 Delta R.T.: 0.001 min
 Response: 26415721
 Conc: 18.20 ng/ml



#2 Decachlorobiphenyl

R.T.: 9.215 min
 Delta R.T.: -0.011 min
 Response: 25207058
 Conc: 18.29 ng/ml m