

Data Path : Z:\pestpcbsrv\HPCHEM1\ECD_P\Data\PP101018\
 Data File : PP027663.D
 Signal(s) : Signal #1: ECD1A.CH Signal #2: ECD2B.CH
 Acq On : 10 Oct 2018 18:38
 Operator : EI\MA
 Sample : J5164-07
 Misc :
 ALS Vial : 5 Sample Multiplier: 1

Instrument :
 ECD_P
 ClientSampleId :

Integration File signal 1: autoint1.e
 Integration File signal 2: autoint2.e
 Quant Time: Oct 11 05:00:33 2018
 Quant Method : Z:\pestpcbsrv\HPCHEM1\ECD_P\methods\PP100918.M
 Quant Title : 8080.M
 QLast Update : Wed Oct 10 09:22:10 2018
 Response via : Initial Calibration
 Integrator: ChemStation 6890 Scale Mode: Large solvent peaks clipped

Volume Inj. : 2 µl
 Signal #1 Phase : ZB-CLPesticides-1 Signal #2 Phase: ZB-CLPesticides-2
 Signal #1 Info : 30M x 0.32mm x0.5 Signal #2 Info : 30M x 0.32mm x 0.25µm

	Compound	RT#1	RT#2	Resp#1	Resp#2	ng/ml	ng/ml

System Monitoring Compounds							
4) S	2,4-DCAA	12.045	12.158	112.0E6	167.0E6	452.733	396.888
Target Compounds							
1) T	Dalapon	3.306	2.980	161.8E6	153.5E6	269.232	287.358
2) T	3,5-DICHL...	10.459	10.250	89909355	93017521	187.636	180.865
3) T	4-Nitroph...	11.623	11.304	67916555	33458905	174.713	186.478
5) T	DICAMBA	12.366	12.467	233.7E6	283.1E6	151.939	173.625
6) T	MCP P	12.726	12.655	10991193	12858461	31.568	15.557 #
7) T	MCPA	12.949	13.043	8236320	19069281	19.865	14.654 #
8) T	DICHLORPROP	13.564	13.584	81637506	90350025	230.727	222.064
9) T	2,4-D	13.915	14.073	61107977	92748408	178.204	192.773
10) T	Pentachlo...	14.331	14.680	1512.2E6	1333.5E6	189.272	203.717
11) T	2,4,5-TP ...	15.194	15.252	540.5E6	497.3E6	190.546	202.290
12) T	2,4,5-T	15.586	15.895	393.6E6	316.7E6	178.346	192.713
13) T	2,4-DB	16.350	16.497	66771055	36006125	474.654	268.643 #
14) T	DINOSEB	17.833	16.885	331.9E6	267.4E6	168.771	163.282
15) T	Picloram	17.599	18.268	332.2E6	292.7E6	260.170	277.211
16) T	DCPA	18.197	18.144	505.6E6	472.4E6	121.908	151.684

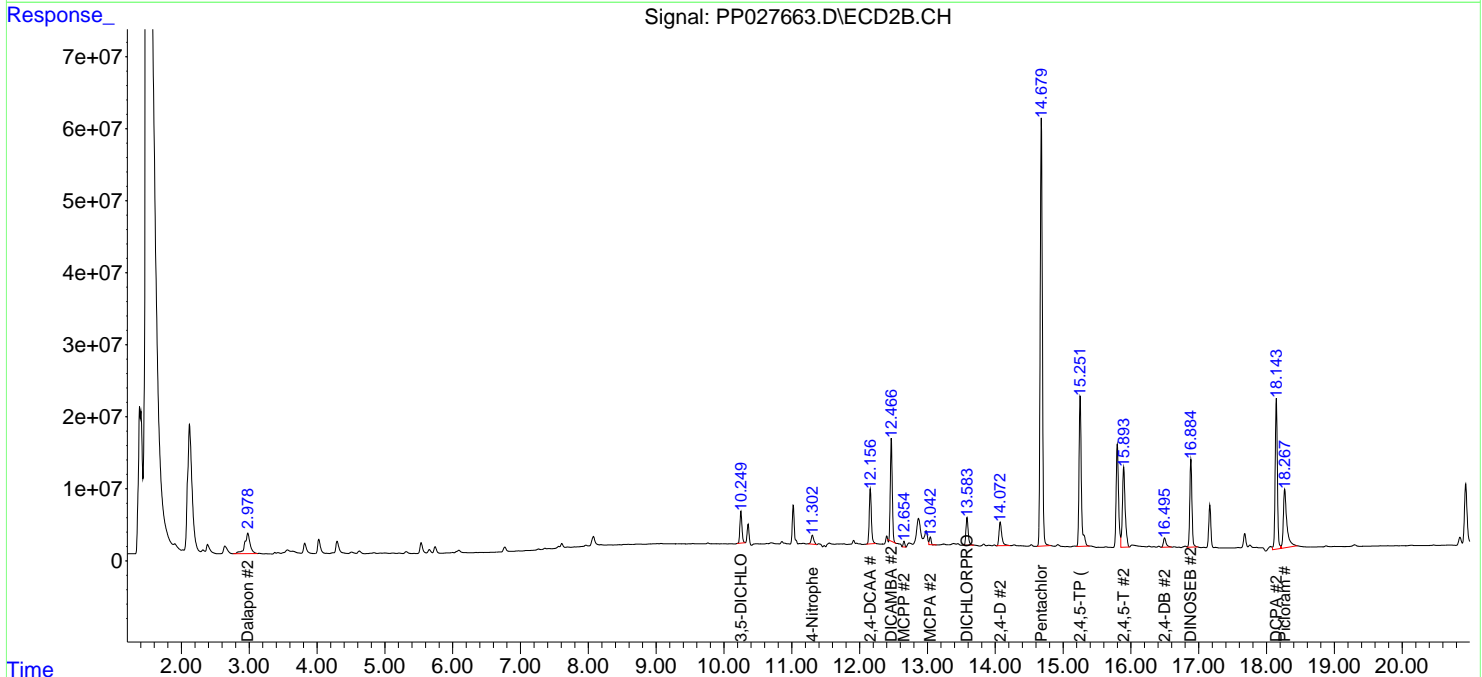
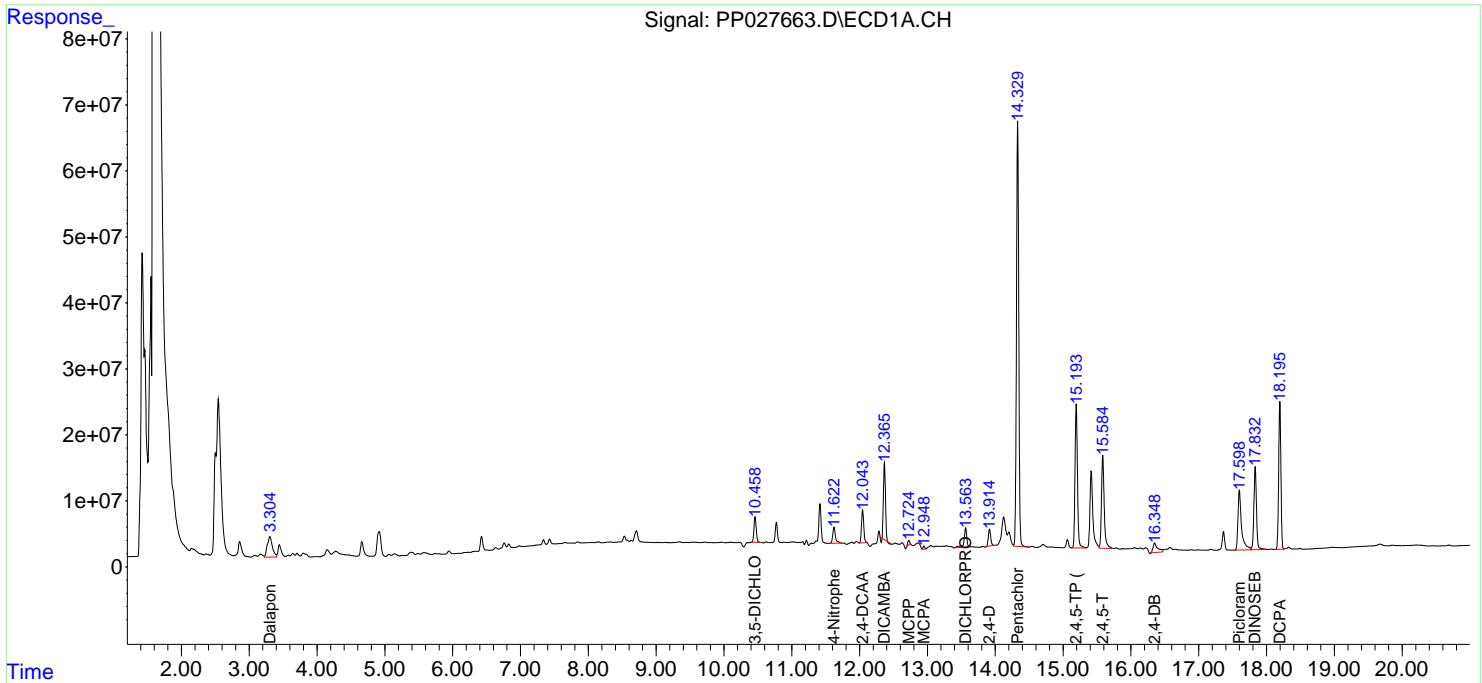
(f)=RT Delta > 1/2 Window (#)=Amounts differ by > 25% (m)=manual int.

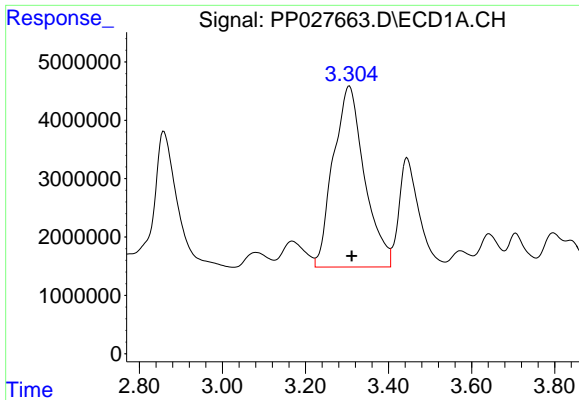
Data Path : Z:\pestpcbsrv\HPCHEM1\ECD_P\Data\PP101018\
 Data File : PP027663.D
 Signal(s) : Signal #1: ECD1A.CH Signal #2: ECD2B.CH
 Acq On : 10 Oct 2018 18:38
 Operator : EI\MA
 Sample : J5164-07
 Misc :
 ALS Vial : 5 Sample Multiplier: 1

Instrument :
 ECD_P
 ClientSampled :

Integration File signal 1: autoint1.e
 Integration File signal 2: autoint2.e
 Quant Time: Oct 11 05:00:33 2018
 Quant Method : Z:\pestpcbsrv\HPCHEM1\ECD_P\methods\PP100918.M
 Quant Title : 8080.M
 QLast Update : Wed Oct 10 09:22:10 2018
 Response via : Initial Calibration
 Integrator: ChemStation 6890 Scale Mode: Large solvent peaks clipped

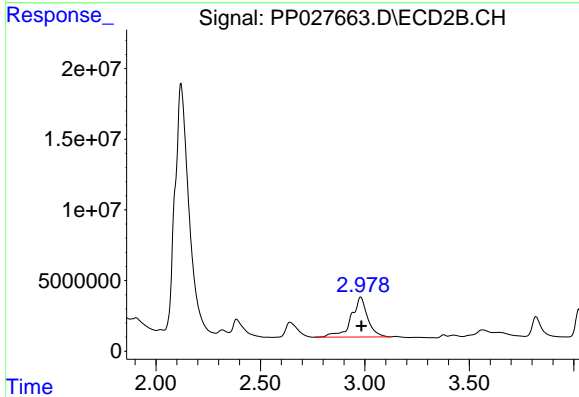
Volume Inj. : 2 µl
 Signal #1 Phase : ZB-CLPesticides-1 Signal #2 Phase: ZB-CLPesticides-2
 Signal #1 Info : 30M x 0.32mm x0.5 Signal #2 Info : 30M x 0.32mm x 0.25µm



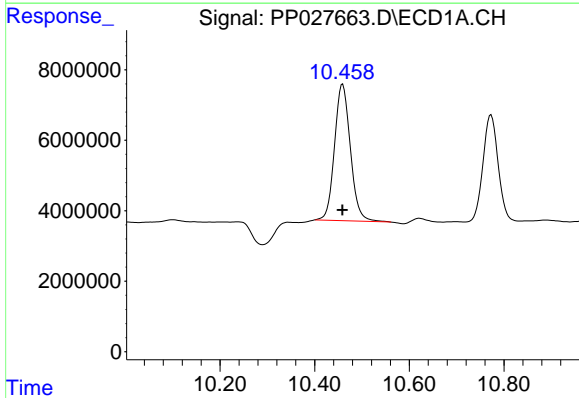


#1 Dalapon
 R.T.: 3.306 min
 Delta R.T.: -0.005 min
 Response: 161839471
 Conc: 269.23 ng/ml

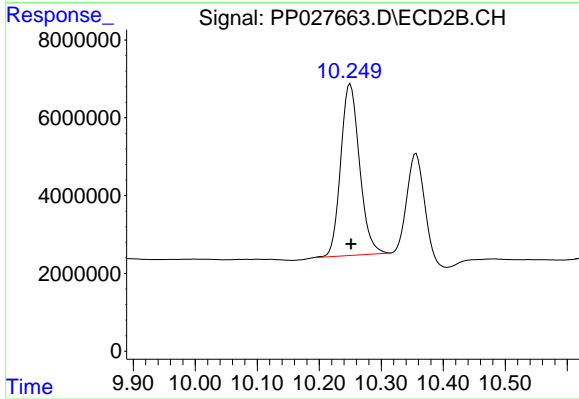
Instrument :
 ECD_P
 ClientSampleId :



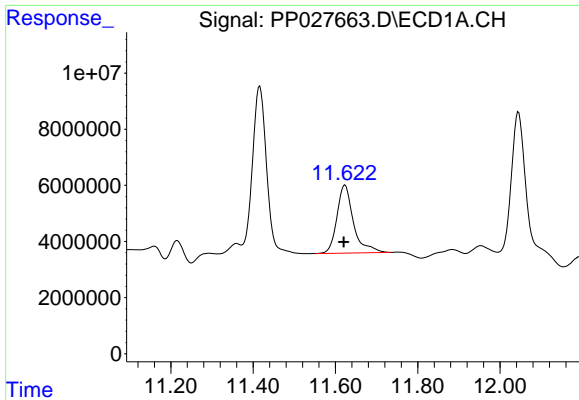
#1 Dalapon
 R.T.: 2.980 min
 Delta R.T.: -0.004 min
 Response: 153549435
 Conc: 287.36 ng/ml



#2 3,5-DICHLOROBENZOIC ACID
 R.T.: 10.459 min
 Delta R.T.: 0.000 min
 Response: 89909355
 Conc: 187.64 ng/ml

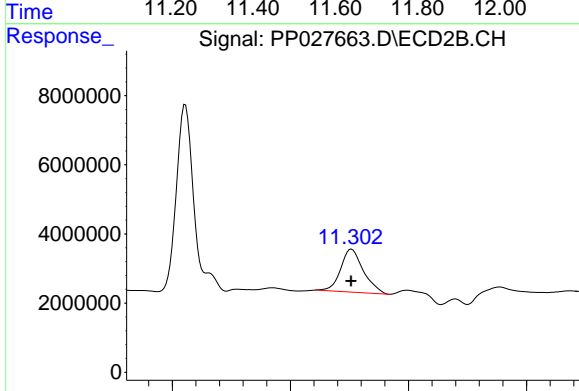


#2 3,5-DICHLOROBENZOIC ACID
 R.T.: 10.250 min
 Delta R.T.: 0.000 min
 Response: 93017521
 Conc: 180.87 ng/ml

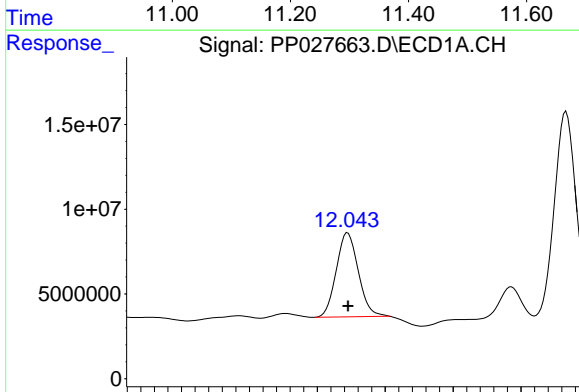


#3 4-Nitrophenol
R.T.: 11.623 min
Delta R.T.: 0.003 min
Response: 67916555
Conc: 174.71 ng/ml

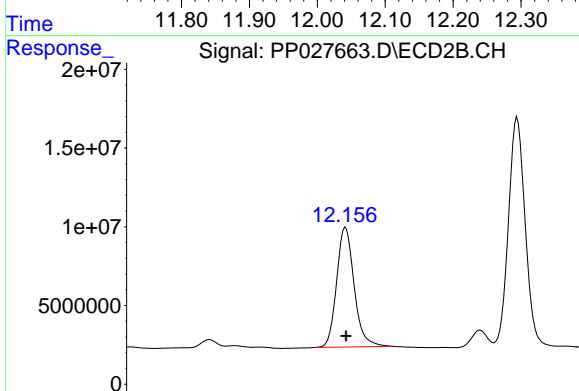
Instrument :
ECD_P
ClientSampled :



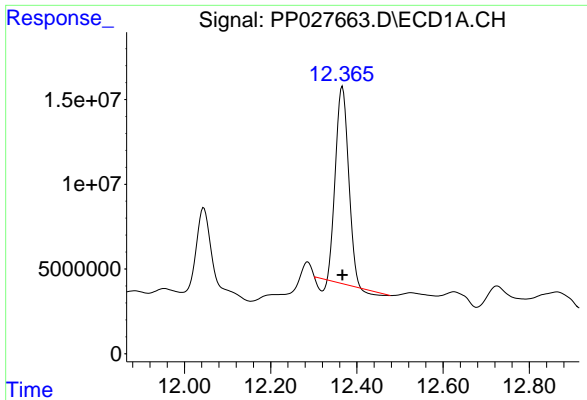
#3 4-Nitrophenol
R.T.: 11.304 min
Delta R.T.: 0.001 min
Response: 33458905
Conc: 186.48 ng/ml



#4 2,4-DCAA
R.T.: 12.045 min
Delta R.T.: 0.000 min
Response: 112003975
Conc: 452.73 ng/ml

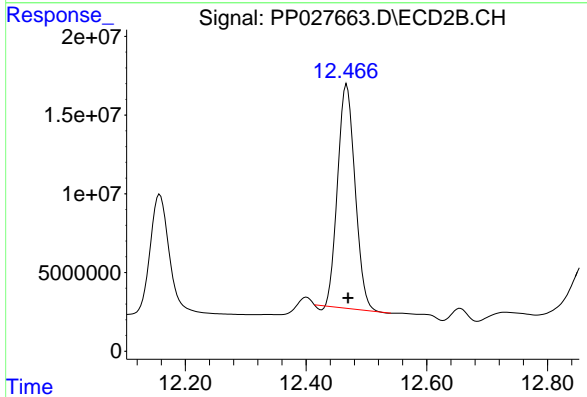


#4 2,4-DCAA
R.T.: 12.158 min
Delta R.T.: 0.000 min
Response: 167008454
Conc: 396.89 ng/ml

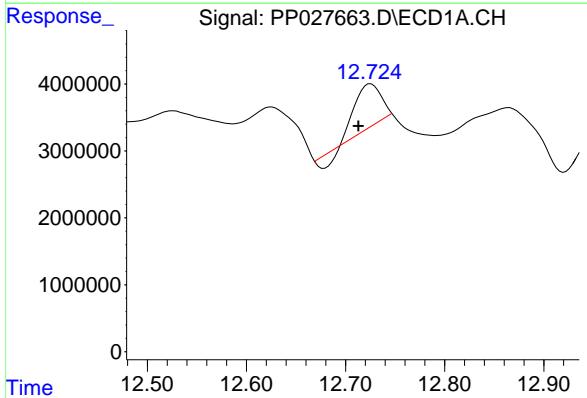


#5 DICAMBA
 R.T.: 12.366 min
 Delta R.T.: 0.000 min
 Response: 233743505
 Conc: 151.94 ng/ml

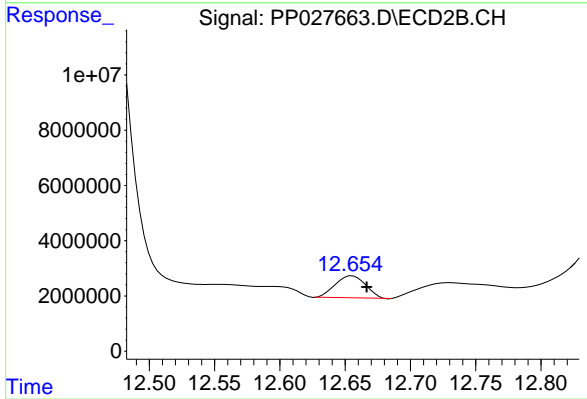
Instrument :
 ECD_P
 ClientSampled :



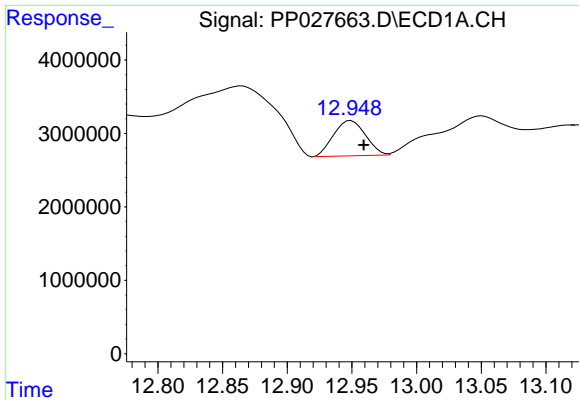
#5 DICAMBA
 R.T.: 12.467 min
 Delta R.T.: -0.002 min
 Response: 283146737
 Conc: 173.63 ng/ml



#6 MCP
 R.T.: 12.726 min
 Delta R.T.: 0.013 min
 Response: 10991193
 Conc: 31.57 ug/ml

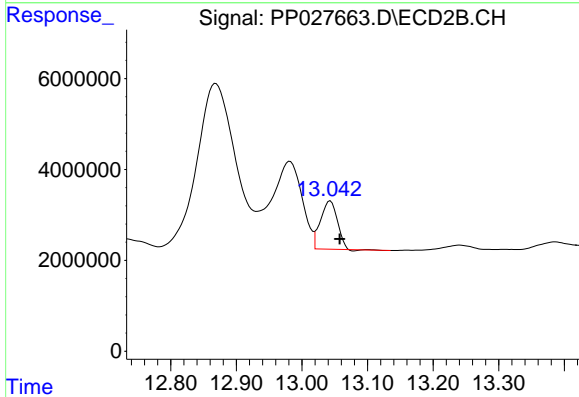


#6 MCP
 R.T.: 12.655 min
 Delta R.T.: -0.011 min
 Response: 12858461
 Conc: 15.56 ug/ml

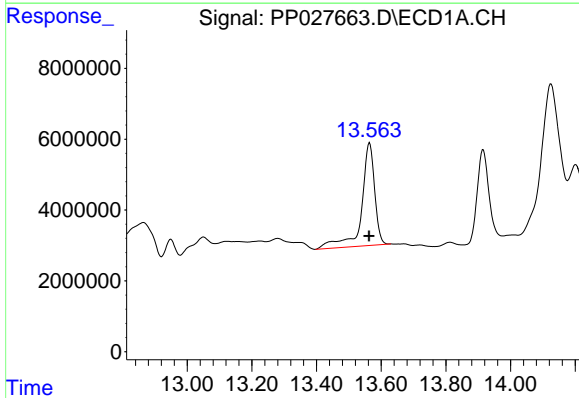


#7 MCPA
 R.T.: 12.949 min
 Delta R.T.: -0.010 min
 Response: 8236320
 Conc: 19.87 ug/ml

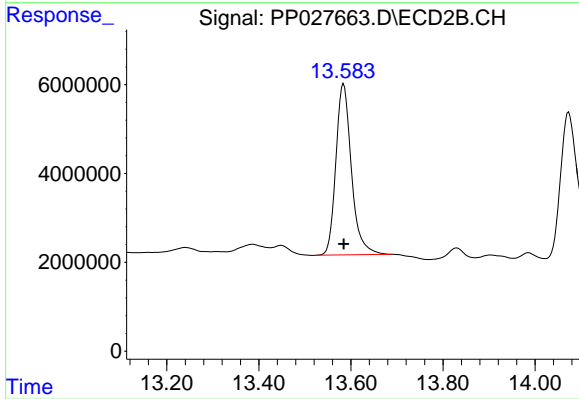
Instrument :
 ECD_P
 ClientSampleId :



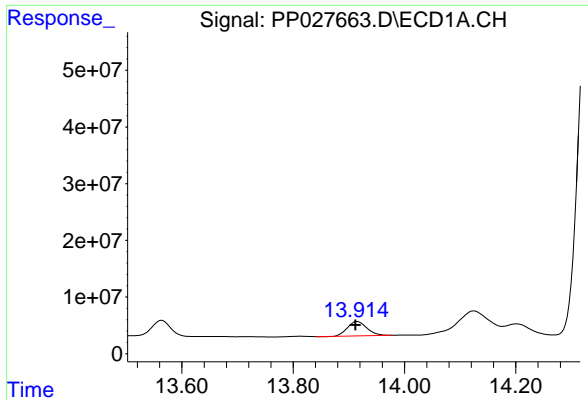
#7 MCPA
 R.T.: 13.043 min
 Delta R.T.: -0.014 min
 Response: 19069281
 Conc: 14.65 ug/ml



#8 DICHLORPROP
 R.T.: 13.564 min
 Delta R.T.: 0.001 min
 Response: 81637506
 Conc: 230.73 ng/ml

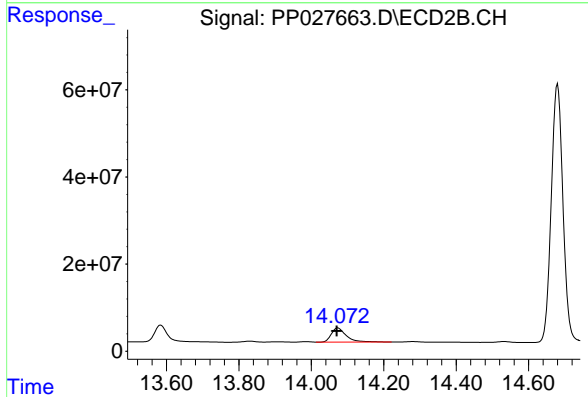


#8 DICHLORPROP
 R.T.: 13.584 min
 Delta R.T.: 0.000 min
 Response: 90350025
 Conc: 222.06 ng/ml

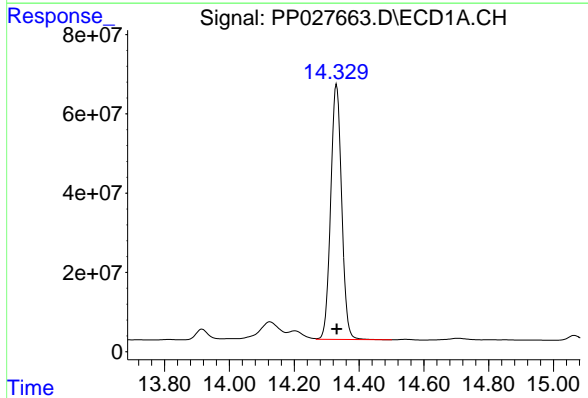


#9 2,4-D
 R.T.: 13.915 min
 Delta R.T.: 0.003 min
 Response: 61107977
 Conc: 178.20 ng/ml

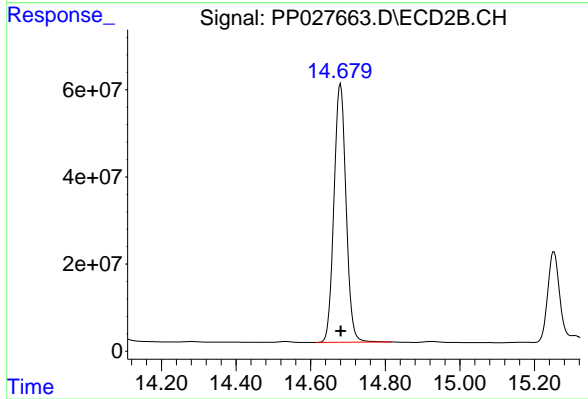
Instrument :
 ECD_P
 ClientSampled :



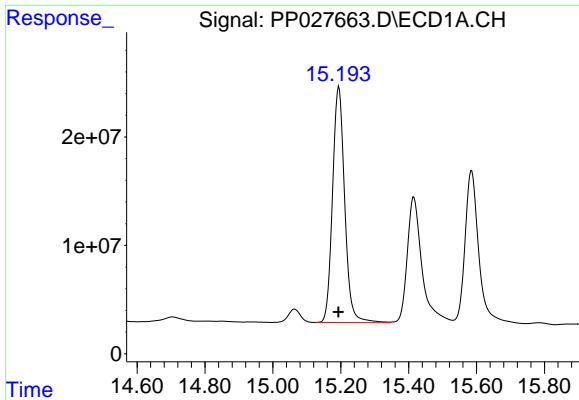
#9 2,4-D
 R.T.: 14.073 min
 Delta R.T.: 0.004 min
 Response: 92748408
 Conc: 192.77 ng/ml



#10 Pentachlorophenol
 R.T.: 14.331 min
 Delta R.T.: 0.000 min
 Response: 1512247025
 Conc: 189.27 ng/ml



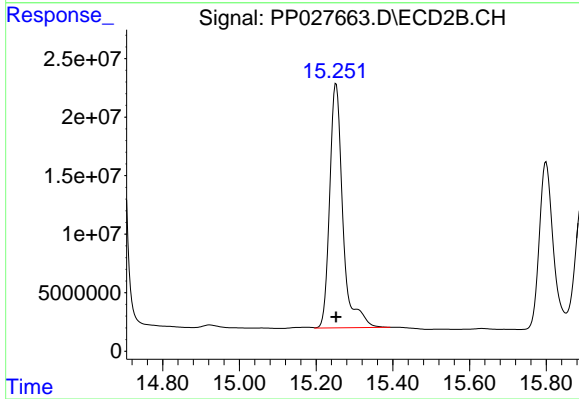
#10 Pentachlorophenol
 R.T.: 14.680 min
 Delta R.T.: 0.000 min
 Response: 1333485663
 Conc: 203.72 ng/ml



#11 2,4,5-TP (SILVEX)

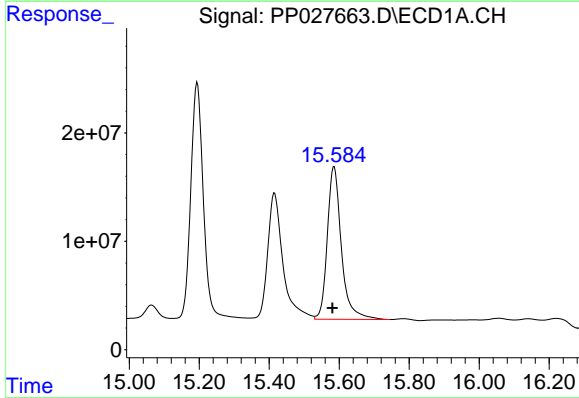
R.T.: 15.194 min
 Delta R.T.: 0.002 min
 Response: 540505212
 Conc: 190.55 ng/ml

Instrument :
 ECD_P
 ClientSampleId :



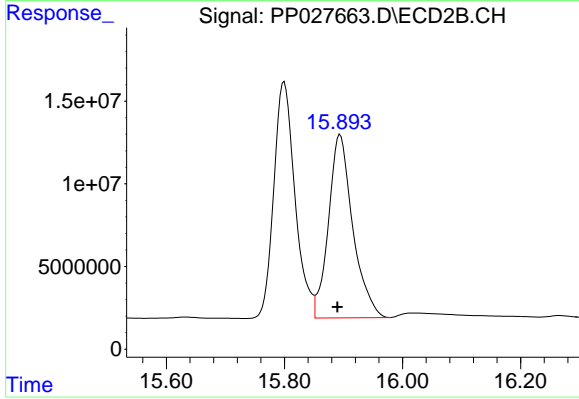
#11 2,4,5-TP (SILVEX)

R.T.: 15.252 min
 Delta R.T.: 0.000 min
 Response: 497294486
 Conc: 202.29 ng/ml



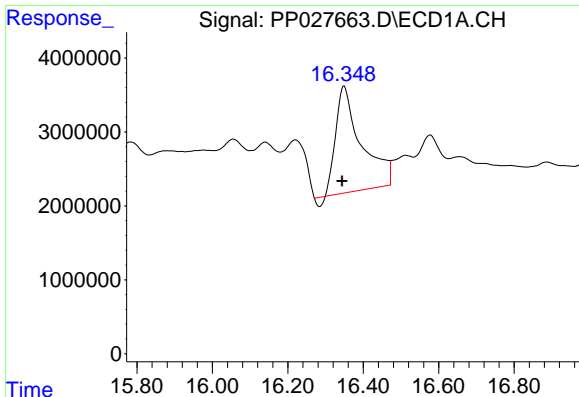
#12 2,4,5-T

R.T.: 15.586 min
 Delta R.T.: 0.004 min
 Response: 393605241
 Conc: 178.35 ng/ml



#12 2,4,5-T

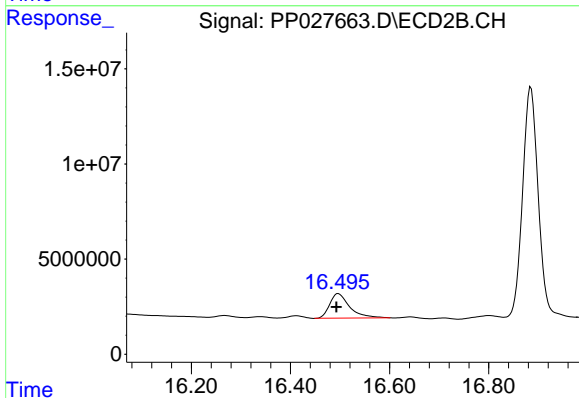
R.T.: 15.895 min
 Delta R.T.: 0.005 min
 Response: 316674876
 Conc: 192.71 ng/ml



#13 2,4-DB

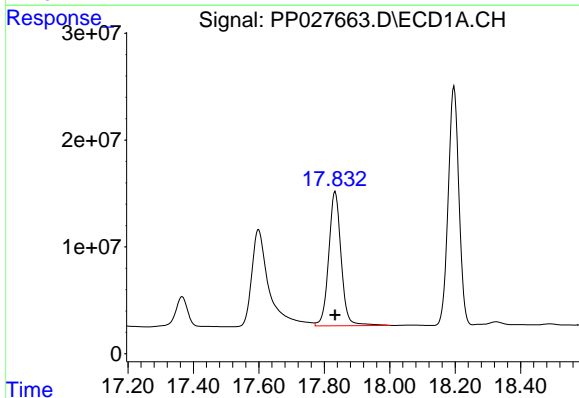
R.T.: 16.350 min
 Delta R.T.: 0.006 min
 Response: 66771055
 Conc: 474.65 ng/ml

Instrument :
 ECD_P
 ClientSampled :



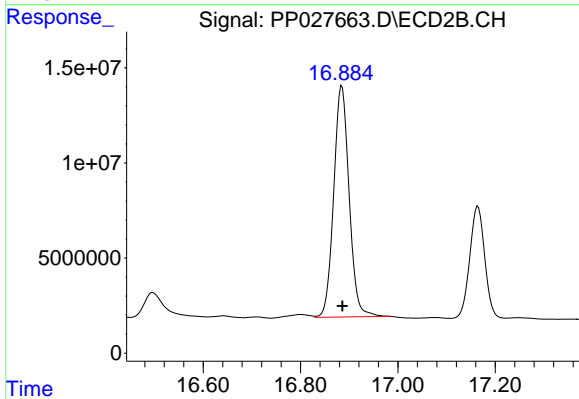
#13 2,4-DB

R.T.: 16.497 min
 Delta R.T.: 0.004 min
 Response: 36006125
 Conc: 268.64 ng/ml



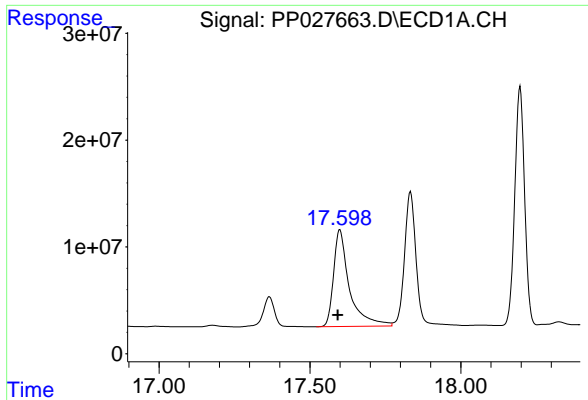
#14 DINOSEB

R.T.: 17.833 min
 Delta R.T.: 0.000 min
 Response: 331869212
 Conc: 168.77 ng/ml



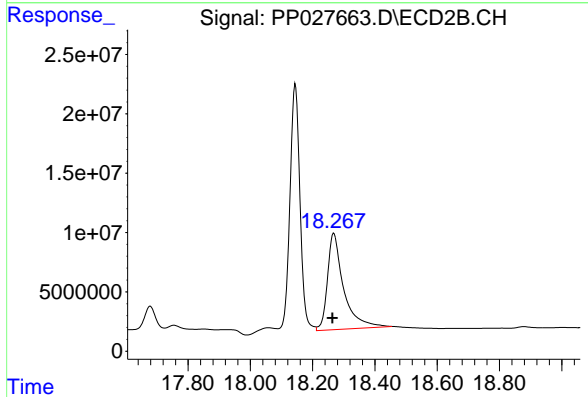
#14 DINOSEB

R.T.: 16.885 min
 Delta R.T.: 0.000 min
 Response: 267378548
 Conc: 163.28 ng/ml

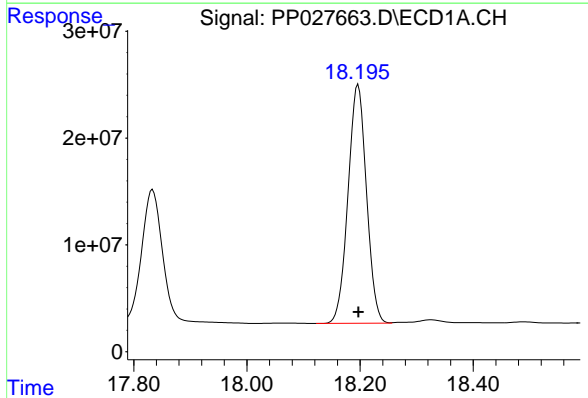


#15 Picloram
 R.T.: 17.599 min
 Delta R.T.: 0.007 min
 Response: 332209855
 Conc: 260.17 ng/ml

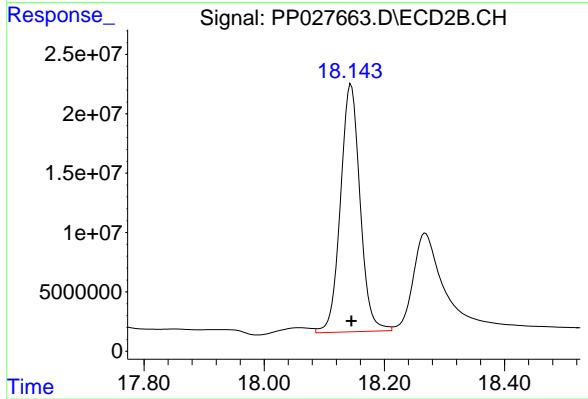
Instrument :
 ECD_P
 ClientSampled :



#15 Picloram
 R.T.: 18.268 min
 Delta R.T.: 0.005 min
 Response: 292720034
 Conc: 277.21 ng/ml



#16 DCPA
 R.T.: 18.197 min
 Delta R.T.: 0.000 min
 Response: 505604252
 Conc: 121.91 ng/ml



#16 DCPA
 R.T.: 18.144 min
 Delta R.T.: 0.000 min
 Response: 472369610
 Conc: 151.68 ng/ml