

Data Path : Z:\pestpcbsrv\HPCHEM1\ECD_Q\Data\PQ010422\
 Data File : PQ055513.D
 Signal(s) : Signal #1: ECD1A.ch Signal #2: ECD2B.ch
 Acq On : 04 Jan 2022 13:47
 Operator : AJ\MA
 Sample : AR1254ICC750
 Misc :
 ALS Vial : 21 Sample Multiplier: 1

Instrument :
 ECD_Q
 ClientSampleId :
 AR1254ICC750

Integration File signal 1: autoint1.e
 Integration File signal 2: autoint2.e
 Quant Time: Jan 04 14:25:16 2022
 Quant Method : Z:\pestpcbsrv\HPCHEM1\ECD_Q\Method\PQ010422.M
 Quant Title : GC EXTRACTABLES
 QLast Update : Tue Jan 04 14:23:46 2022
 Response via : Initial Calibration
 Integrator: ChemStation

Volume Inj. : 2 µl
 Signal #1 Phase : ZB-MR1 Signal #2 Phase: ZB-MR2
 Signal #1 Info : 30Mx0.32mmx 0.50µ Signal #2 Info : 30M x 0.32mm x 0.25µm

Compound	RT#1	RT#2	Resp#1	Resp#2	ng/ml	ng/ml

System Monitoring Compounds						
1) SA Tetrachlo...	5.238	4.303	934.8E6	828.5E6	84.093	86.246
2) SA Decachlor...	11.424	9.686	1022.7E6	532.3E6	74.033	75.848
Target Compounds						
26) L6 AR-1254-1	7.474	6.451	246.7E6	377.8E6	762.581	795.015
27) L6 AR-1254-2	7.703	6.609	385.1E6	318.9E6	761.116	786.502
28) L6 AR-1254-3	8.086	7.033	468.5E6	523.1E6	769.496	785.771
29) L6 AR-1254-4	8.382	7.272	336.9E6	306.4E6	751.350	773.265
30) L6 AR-1254-5	8.812	7.703	390.6E6	438.5E6	760.804	772.482

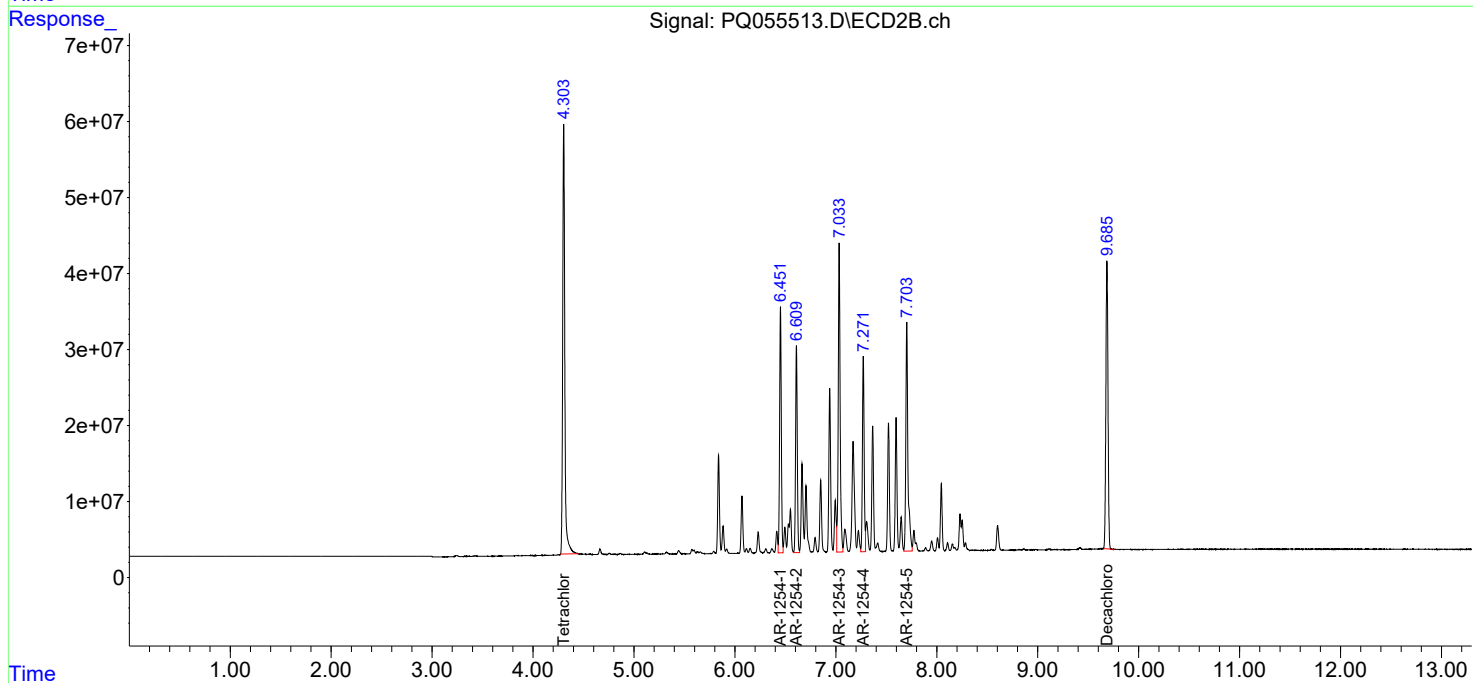
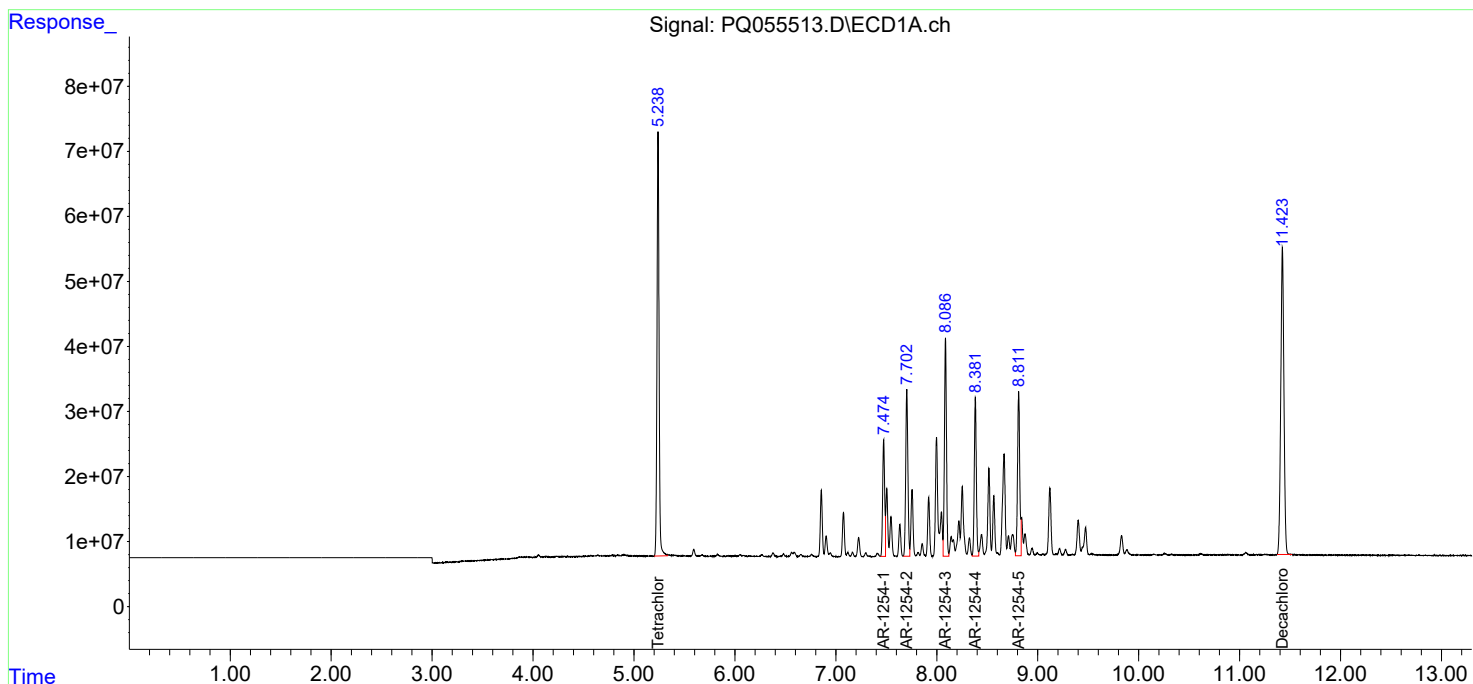
(f)=RT Delta > 1/2 Window (#)=Amounts differ by > 25% (m)=manual int.

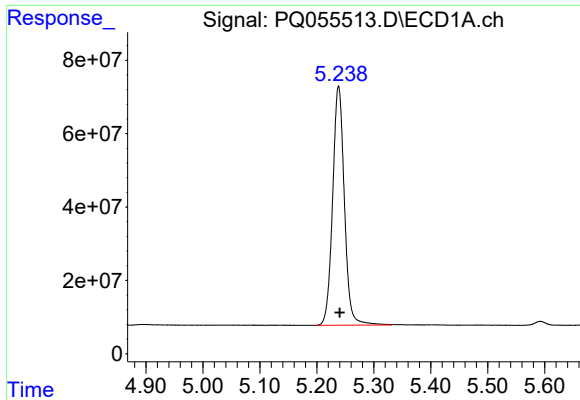
Data Path : Z:\pestpcbsrv\HPCHEM1\ECD_Q\Data\PQ010422\
 Data File : PQ055513.D
 Signal(s) : Signal #1: ECD1A.ch Signal #2: ECD2B.ch
 Acq On : 04 Jan 2022 13:47
 Operator : AJ\MA
 Sample : AR1254ICC750
 Misc :
 ALS Vial : 21 Sample Multiplier: 1

Instrument :
 ECD_Q
 ClientSampleId :
 AR1254ICC750

Integration File signal 1: autoint1.e
 Integration File signal 2: autoint2.e
 Quant Time: Jan 04 14:25:16 2022
 Quant Method : Z:\pestpcbsrv\HPCHEM1\ECD_Q\Method\PQ010422.M
 Quant Title : GC EXTRACTABLES
 QLast Update : Tue Jan 04 14:23:46 2022
 Response via : Initial Calibration
 Integrator: ChemStation

Volume Inj. : 2 µl
 Signal #1 Phase : ZB-MR1 Signal #2 Phase: ZB-MR2
 Signal #1 Info : 30Mx0.32mmx 0.50µm Signal #2 Info : 30M x 0.32mm x 0.25µm

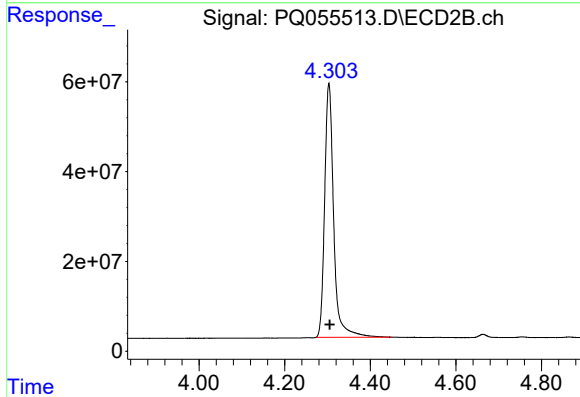




#1 Tetrachloro-m-xylene

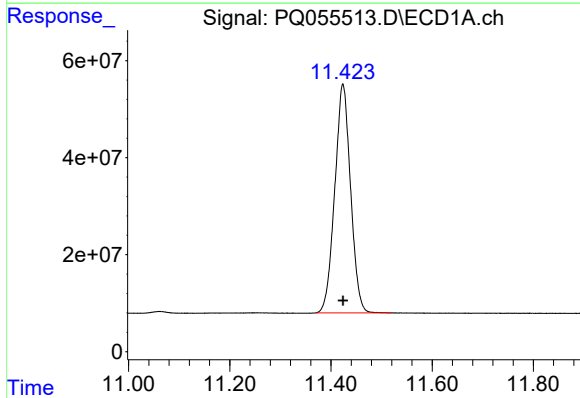
R.T.: 5.238 min
 Delta R.T.: -0.002 min
 Response: 934847407
 Conc: 84.09 ng/ml

Instrument :
 ECD_Q
 ClientSampleId :
 AR1254ICC750



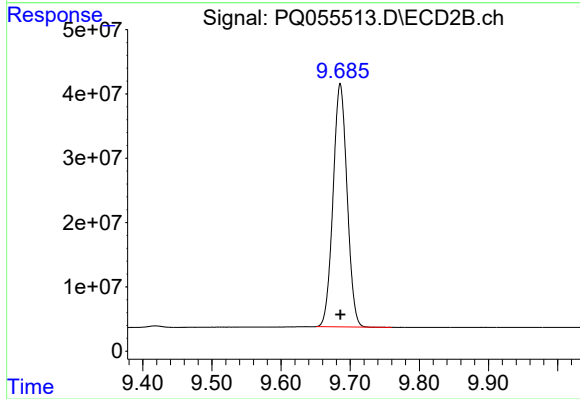
#1 Tetrachloro-m-xylene

R.T.: 4.303 min
 Delta R.T.: -0.002 min
 Response: 828529769
 Conc: 86.25 ng/ml



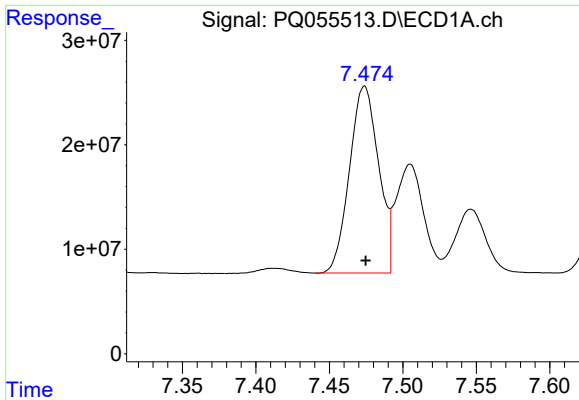
#2 Decachlorobiphenyl

R.T.: 11.424 min
 Delta R.T.: 0.000 min
 Response: 1022695693
 Conc: 74.03 ng/ml



#2 Decachlorobiphenyl

R.T.: 9.686 min
 Delta R.T.: 0.000 min
 Response: 532305839
 Conc: 75.85 ng/ml

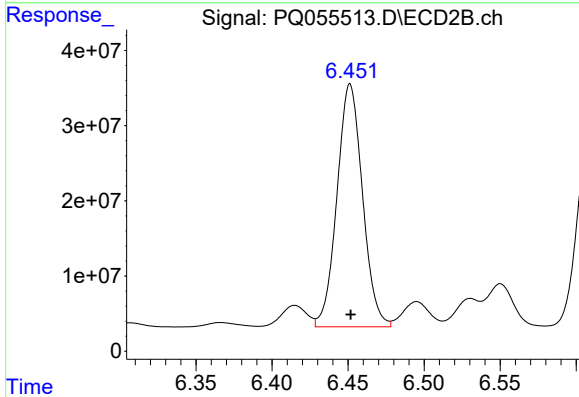


#26 AR-1254-1

R.T.: 7.474 min
 Delta R.T.: 0.000 min
 Response: 246744936
 Conc: 762.58 ng/ml

Instrument :
 ECD_Q
 ClientSampleId :
 AR1254ICC750

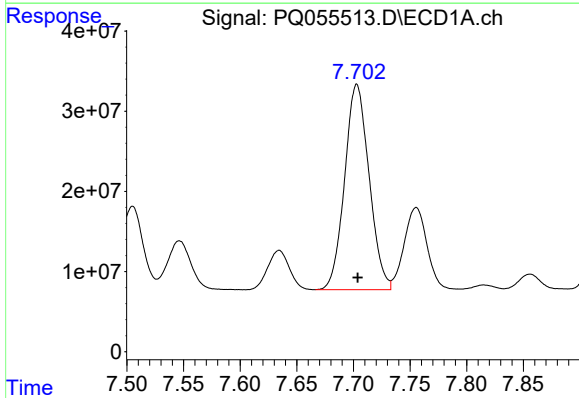
Time 7.35 7.40 7.45 7.50 7.55 7.60



#26 AR-1254-1

R.T.: 6.451 min
 Delta R.T.: 0.000 min
 Response: 377806502
 Conc: 795.02 ng/ml

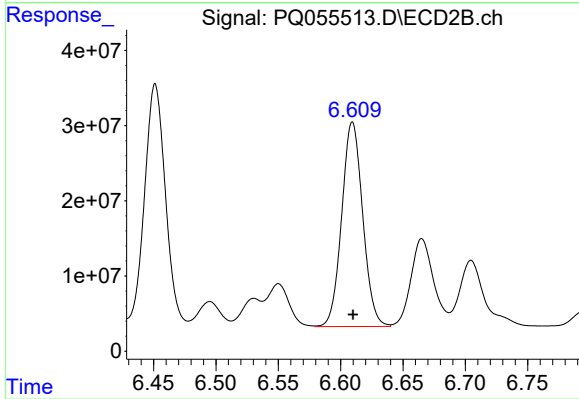
Time 6.35 6.40 6.45 6.50 6.55



#27 AR-1254-2

R.T.: 7.703 min
 Delta R.T.: 0.000 min
 Response: 385090805
 Conc: 761.12 ng/ml

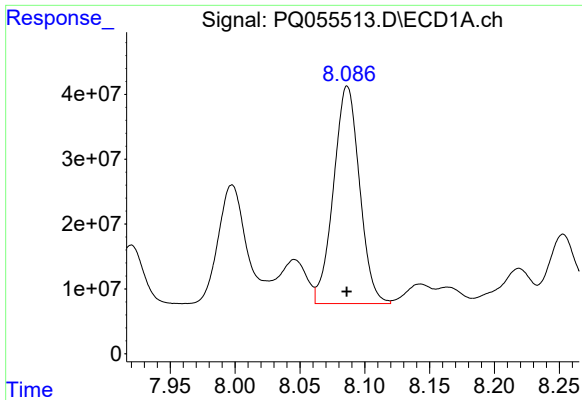
Time 7.50 7.55 7.60 7.65 7.70 7.75 7.80 7.85



#27 AR-1254-2

R.T.: 6.609 min
 Delta R.T.: 0.000 min
 Response: 318947662
 Conc: 786.50 ng/ml

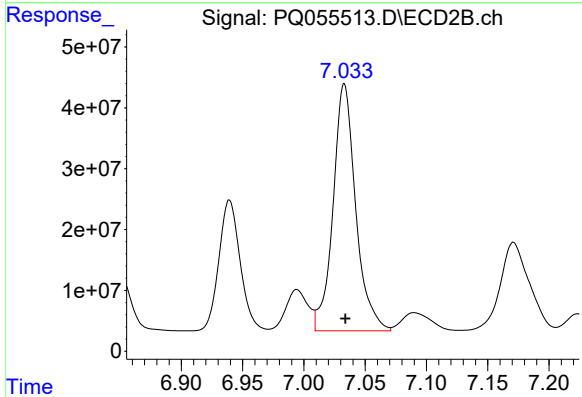
Time 6.45 6.50 6.55 6.60 6.65 6.70 6.75



#28 AR-1254-3

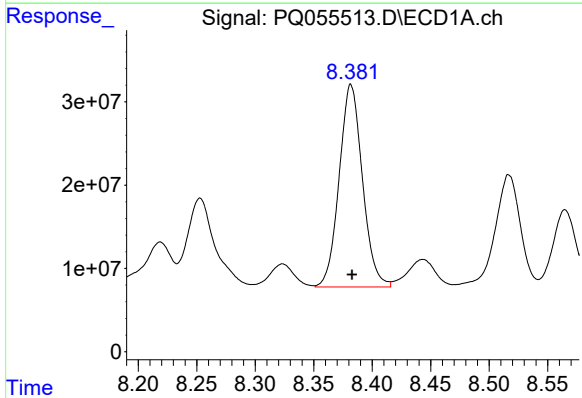
R.T.: 8.086 min
 Delta R.T.: 0.000 min
 Response: 468548523
 Conc: 769.50 ng/ml

Instrument :
 ECD_Q
 ClientSampleId :
 AR1254ICC750



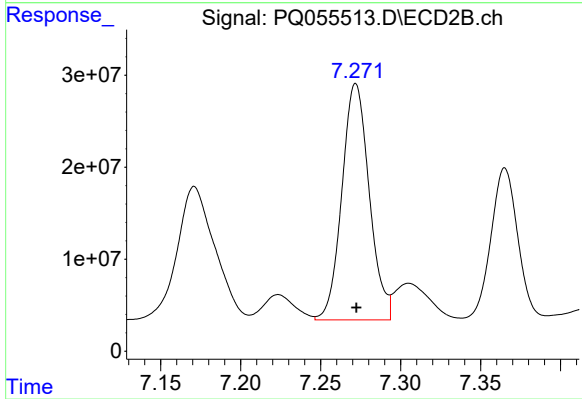
#28 AR-1254-3

R.T.: 7.033 min
 Delta R.T.: 0.000 min
 Response: 523120447
 Conc: 785.77 ng/ml



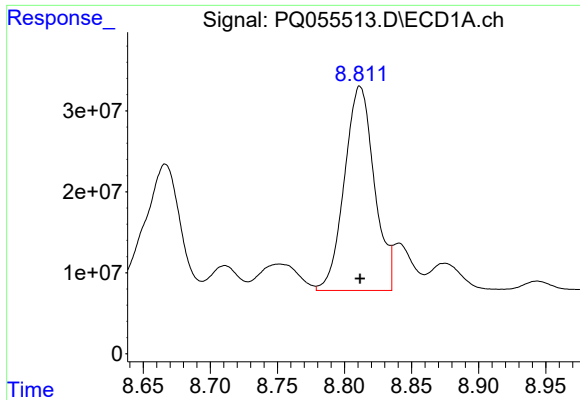
#29 AR-1254-4

R.T.: 8.382 min
 Delta R.T.: 0.000 min
 Response: 336890172
 Conc: 751.35 ng/ml



#29 AR-1254-4

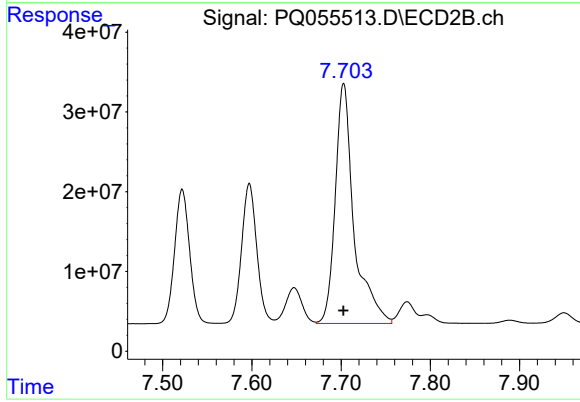
R.T.: 7.272 min
 Delta R.T.: 0.000 min
 Response: 306374538
 Conc: 773.26 ng/ml



#30 AR-1254-5

R.T.: 8.812 min
Delta R.T.: 0.000 min
Response: 390611335
Conc: 760.80 ng/ml

Instrument :
ECD_Q
ClientSampleId :
AR1254ICC750



#30 AR-1254-5

R.T.: 7.703 min
Delta R.T.: 0.000 min
Response: 438475640
Conc: 772.48 ng/ml