

Data Path : Z:\pestpcbsrv\HPCHEM1\ECD_Q\Data\PQ010422\
 Data File : PQ055524.D
 Signal(s) : Signal #1: ECD1A.ch Signal #2: ECD2B.ch
 Acq On : 04 Jan 2022 17:20
 Operator : AJ\MA
 Sample : I.BLK
 Misc :
 ALS Vial : 2 Sample Multiplier: 1

Instrument :
 ECD_Q
 ClientSampleId :
 I.BLK

Integration File signal 1: autoint1.e
 Integration File signal 2: autoint2.e
 Quant Time: Jan 04 17:36:28 2022
 Quant Method : Z:\pestpcbsrv\HPCHEM1\ECD_Q\Method\PQ010422.M
 Quant Title : GC EXTRACTABLES
 QLast Update : Tue Jan 04 15:29:13 2022
 Response via : Initial Calibration
 Integrator: ChemStation

Volume Inj. : 2 µl
 Signal #1 Phase : ZB-MR1 Signal #2 Phase: ZB-MR2
 Signal #1 Info : 30Mx0.32mmx 0.50µ Signal #2 Info : 30M x 0.32mm x 0.25µm

Compound	RT#1	RT#2	Resp#1	Resp#2	ng/ml	ng/ml

System Monitoring Compounds						
1) SA Tetrachlo...	5.238	4.301	276.6E6	221.2E6	24.093	22.982
2) SA Decachlor...	11.422	9.687	323.3E6	156.3E6	21.681	21.026

Target Compounds

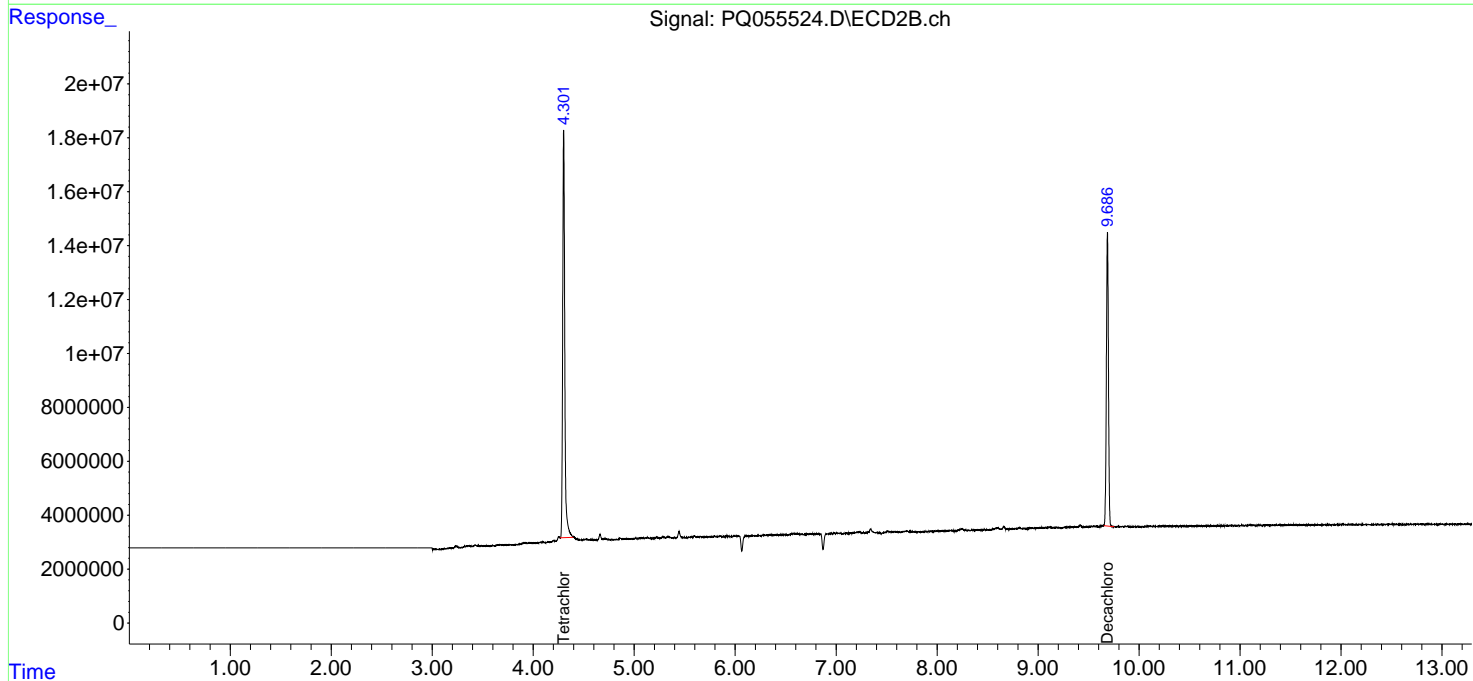
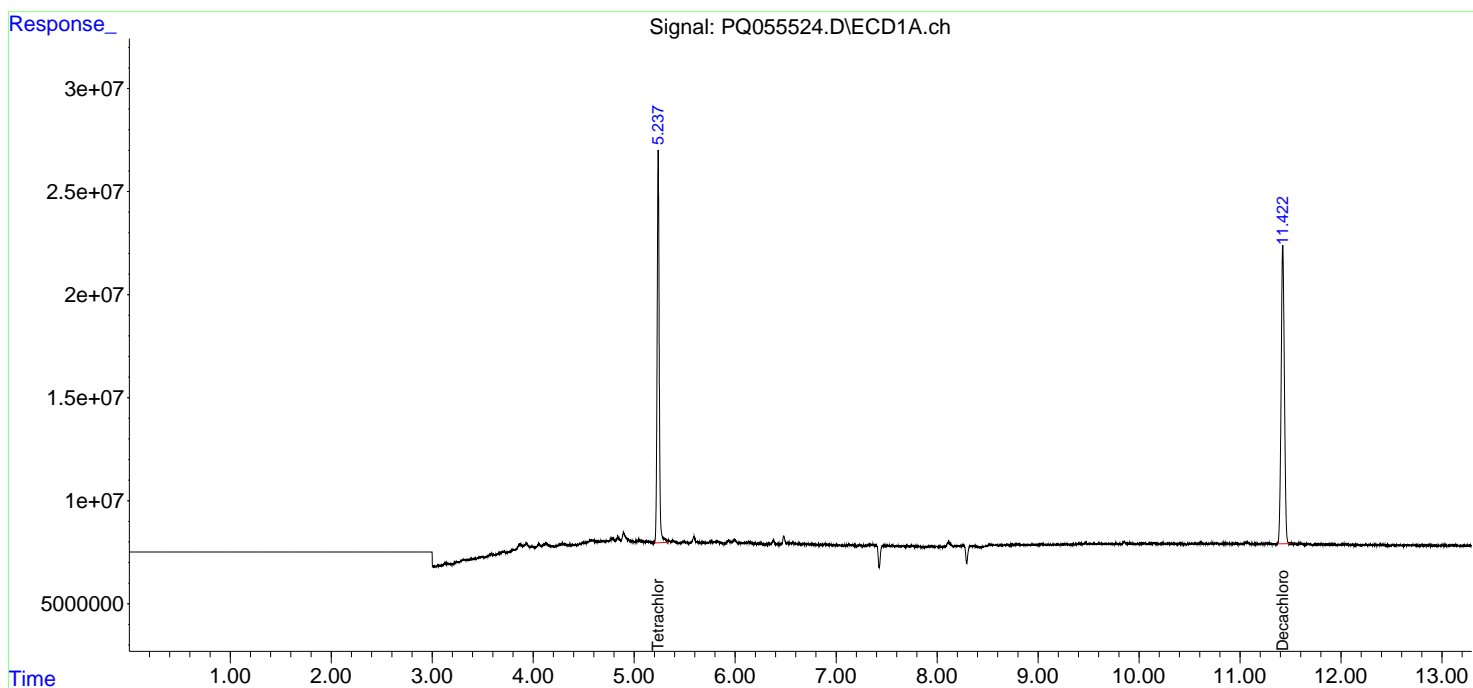
(f)=RT Delta > 1/2 Window (#)=Amounts differ by > 25% (m)=manual int.

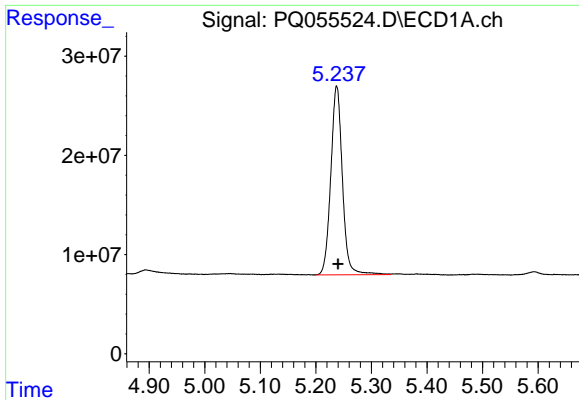
Data Path : Z:\pestpcbsrv\HPCHEM1\ECD_Q\Data\PQ010422\
 Data File : PQ055524.D
 Signal(s) : Signal #1: ECD1A.ch Signal #2: ECD2B.ch
 Acq On : 04 Jan 2022 17:20
 Operator : AJ\MA
 Sample : I.BLK
 Misc :
 ALS Vial : 2 Sample Multiplier: 1

Instrument :
 ECD_Q
 ClientSampleId :
 I.BLK

Integration File signal 1: autoint1.e
 Integration File signal 2: autoint2.e
 Quant Time: Jan 04 17:36:28 2022
 Quant Method : Z:\pestpcbsrv\HPCHEM1\ECD_Q\Method\PQ010422.M
 Quant Title : GC EXTRACTABLES
 QLast Update : Tue Jan 04 15:29:13 2022
 Response via : Initial Calibration
 Integrator: ChemStation

Volume Inj. : 2 µl
 Signal #1 Phase : ZB-MR1 Signal #2 Phase: ZB-MR2
 Signal #1 Info : 30Mx0.32mmx 0.50µ Signal #2 Info : 30M x 0.32mm x 0.25µm

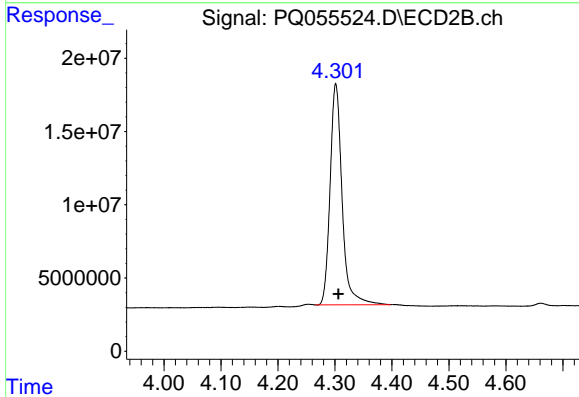




#1 Tetrachloro-m-xylene

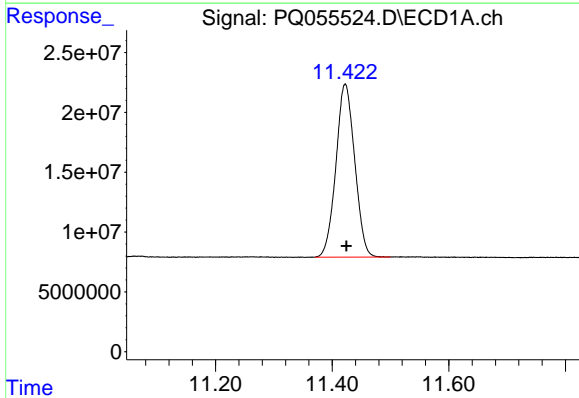
R.T.: 5.238 min
 Delta R.T.: -0.002 min
 Response: 276557696
 Conc: 24.09 ng/ml

Instrument :
 ECD_Q
 ClientSampleId :
 I.BLK



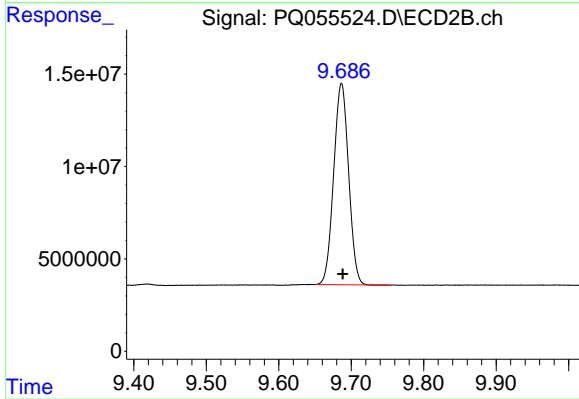
#1 Tetrachloro-m-xylene

R.T.: 4.301 min
 Delta R.T.: -0.005 min
 Response: 221208091
 Conc: 22.98 ng/ml



#2 Decachlorobiphenyl

R.T.: 11.422 min
 Delta R.T.: -0.002 min
 Response: 323333706
 Conc: 21.68 ng/ml



#2 Decachlorobiphenyl

R.T.: 9.687 min
 Delta R.T.: -0.002 min
 Response: 156259567
 Conc: 21.03 ng/ml