

Data Path : Z:\pestpcbsrv\HPCHEM1\ECD_Q\Data\PQ010522\
 Data File : PQ055614.D
 Signal(s) : Signal #1: ECD1A.ch Signal #2: ECD2B.ch
 Acq On : 06 Jan 2022 01:36
 Operator : AJ\MA
 Sample : N1015-07
 Misc :
 ALS Vial : 42 Sample Multiplier: 1

Instrument :
 ECD_Q
ClientSampleId :
 20986

Manual Integrations
APPROVED

Reviewed By :Ankita Jodhani 01/06/2022
 Supervised By :mohammad ahmed 01/06/2022

Integration File signal 1: autoint1.e
 Integration File signal 2: autoint2.e
 Quant Time: Jan 06 05:24:51 2022
 Quant Method : Z:\pestpcbsrv\HPCHEM1\ECD_Q\Method\PQ010422.M
 Quant Title : GC EXTRACTABLES
 QLast Update : Tue Jan 04 15:29:13 2022
 Response via : Initial Calibration
 Integrator: ChemStation

Volume Inj. : 2 µl
 Signal #1 Phase : ZB-MR1 Signal #2 Phase: ZB-MR2
 Signal #1 Info : 30Mx0.32mmx 0.50µ Signal #2 Info : 30M x 0.32mm x 0.25µm

Compound	RT#1	RT#2	Resp#1	Resp#2	ng/ml	ng/ml

System Monitoring Compounds						
1) SA Tetrachlo...	5.240	4.309	189.7E6	172.0E6	16.525m	17.867
2) SA Decachlor...	11.423	9.679	67594206	41739659	4.532	5.617m

Target Compounds

(f)=RT Delta > 1/2 Window (#)=Amounts differ by > 25% (m)=manual int.

Data Path : Z:\pestpcbsrv\HPCHEM1\ECD_Q\Data\PQ010522\
 Data File : PQ055614.D
 Signal(s) : Signal #1: ECD1A.ch Signal #2: ECD2B.ch
 Acq On : 06 Jan 2022 01:36
 Operator : AJ\MA
 Sample : N1015-07
 Misc :
 ALS Vial : 42 Sample Multiplier: 1

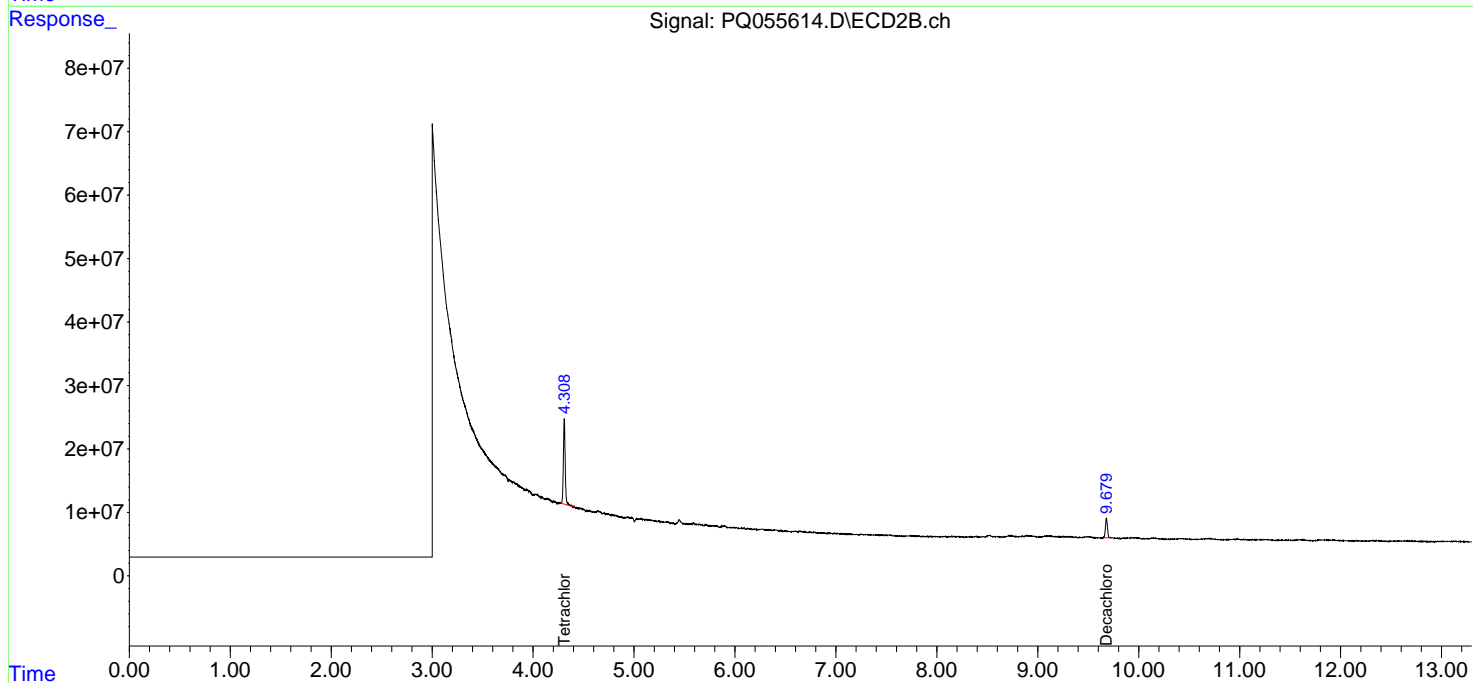
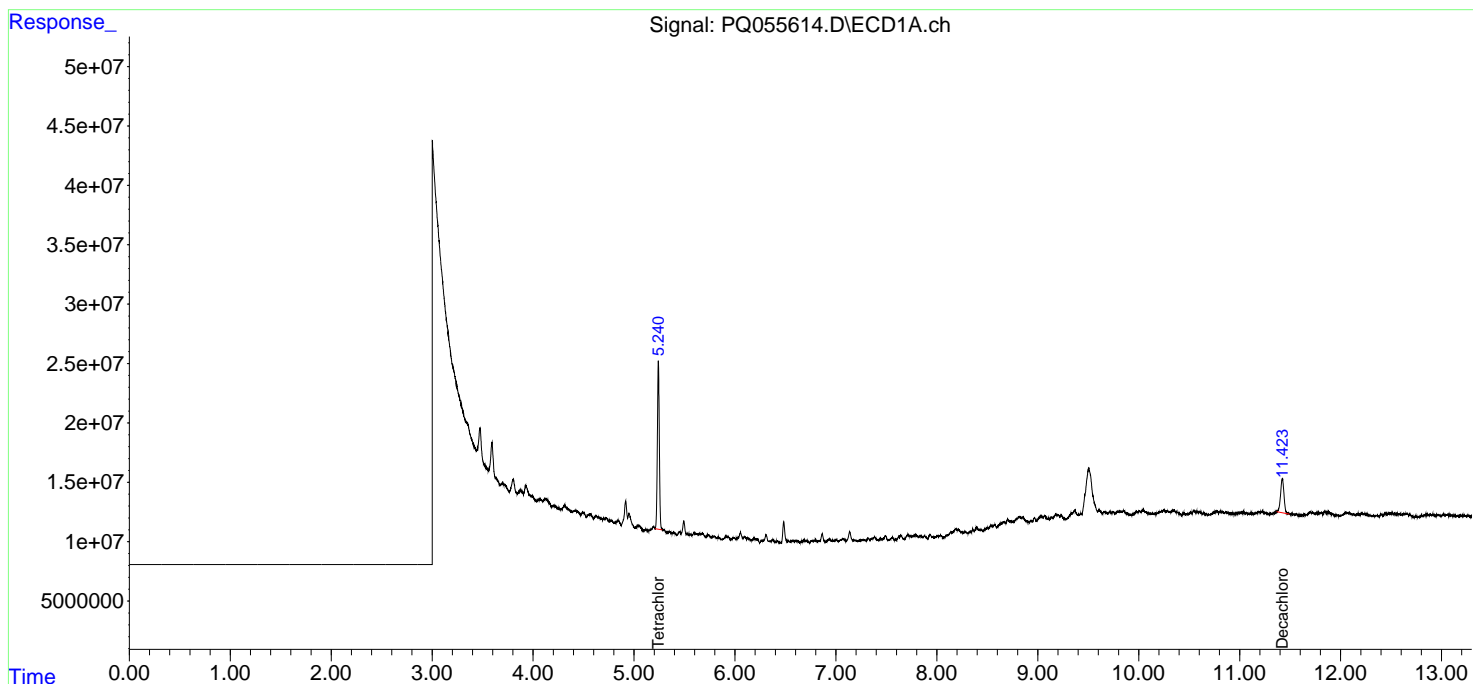
Instrument :
 ECD_Q
 ClientSampleId :
 20986

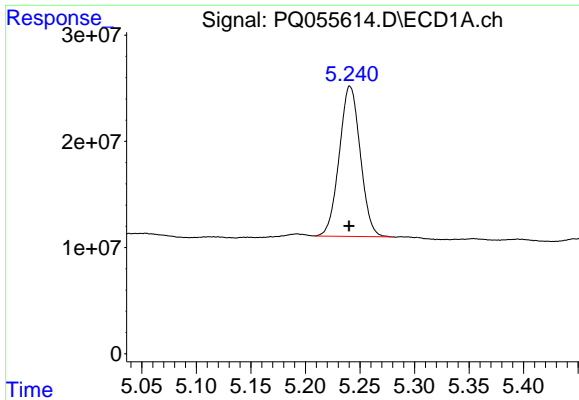
Manual Integrations
 APPROVED

Reviewed By :Ankita Jodhani 01/06/2022
 Supervised By :mohammad ahmed 01/06/2022

Integration File signal 1: autoint1.e
 Integration File signal 2: autoint2.e
 Quant Time: Jan 06 05:24:51 2022
 Quant Method : Z:\pestpcbsrv\HPCHEM1\ECD_Q\Method\PQ010422.M
 Quant Title : GC EXTRACTABLES
 QLast Update : Tue Jan 04 15:29:13 2022
 Response via : Initial Calibration
 Integrator: ChemStation

Volume Inj. : 2 µl
 Signal #1 Phase : ZB-MR1 Signal #2 Phase: ZB-MR2
 Signal #1 Info : 30Mx0.32mmx 0.50µ Signal #2 Info : 30M x 0.32mm x 0.25µm



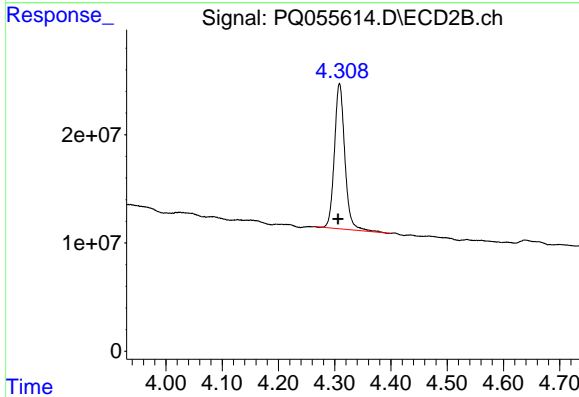


#1 Tetrachloro-m-xylene

R.T.: 5.240 min
 Delta R.T.: 0.000 min
 Response: 189687036
 Conc: 16.52 ng/ml

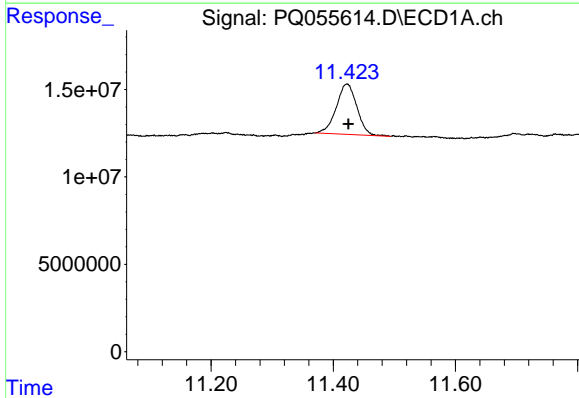
Instrument : ECD_Q
 Client Sample Id : 20986

Manual Integrations
APPROVED
 Reviewed By :Ankita Jodhani 01/06/2022
 Supervised By :mohammad ahmed 01/06/2022



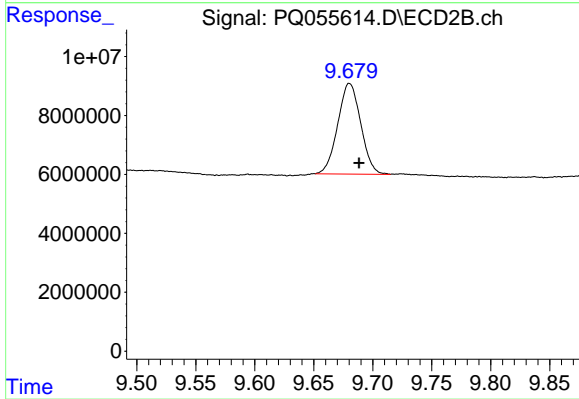
#1 Tetrachloro-m-xylene

R.T.: 4.309 min
 Delta R.T.: 0.003 min
 Response: 171973364
 Conc: 17.87 ng/ml



#2 Decachlorobiphenyl

R.T.: 11.423 min
 Delta R.T.: -0.002 min
 Response: 67594206
 Conc: 4.53 ng/ml



#2 Decachlorobiphenyl

R.T.: 9.679 min
 Delta R.T.: -0.009 min
 Response: 41739659
 Conc: 5.62 ng/ml m