

Data Path : Z:\pestpcbsrv\HPCHEM1\ECD_Q\Data\PQ011321\
 Data File : PQ051681.D
 Signal(s) : Signal #1: ECD1A.ch Signal #2: ECD2B.ch
 Acq On : 12 Jan 2021 19:49
 Operator : DD\AJ
 Sample : AR1254ICC500
 Misc :
 ALS Vial : 12 Sample Multiplier: 1

Instrument :
 ECD_Q
 ClientSampleId :
 AR1254ICC500

Integration File signal 1: autoint1.e
 Integration File signal 2: autoint2.e
 Quant Time: Jan 13 03:08:40 2021
 Quant Method : Z:\pestpcbsrv\HPCHEM1\ECD_Q\Method\PQ011321.M
 Quant Title : GC EXTRACTABLES
 QLast Update : Wed Jan 13 03:08:20 2021
 Response via : Initial Calibration
 Integrator: ChemStation

Volume Inj. : 2 µl
 Signal #1 Phase : ZB-MR1 Signal #2 Phase: ZB-MR2
 Signal #1 Info : 30Mx0.32mmx 0.50µ Signal #2 Info : 30M x 0.32mm x 0.25µm

Compound	RT#1	RT#2	Resp#1	Resp#2	ng/ml	ng/ml

System Monitoring Compounds						
1) SA Tetrachlo...	5.237	4.258	1341.1E6	386.9E6	50.000	50.000
2) SA Decachlor...	11.427	9.603	825.6E6	264.8E6	50.000	50.000
Target Compounds						
26) L6 AR-1254-1	7.468	6.388	452.7E6	190.3E6	500.000	500.000
27) L6 AR-1254-2	7.697	6.546	695.5E6	161.5E6	500.000	500.000
28) L6 AR-1254-3	8.080	6.968	726.3E6	266.7E6	500.000	500.000
29) L6 AR-1254-4	8.374	7.207	506.5E6	160.1E6	500.000	500.000
30) L6 AR-1254-5	8.803	7.635	527.6E6	224.6E6	500.000	500.000

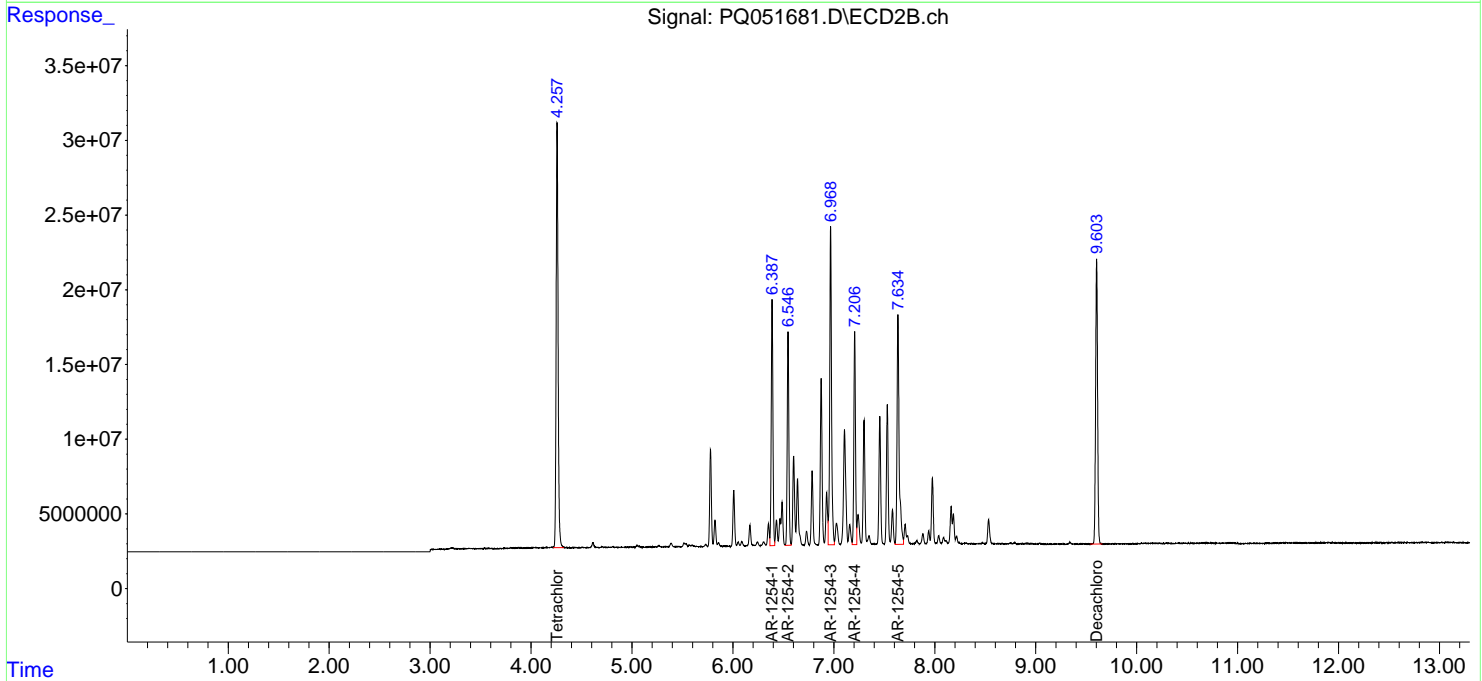
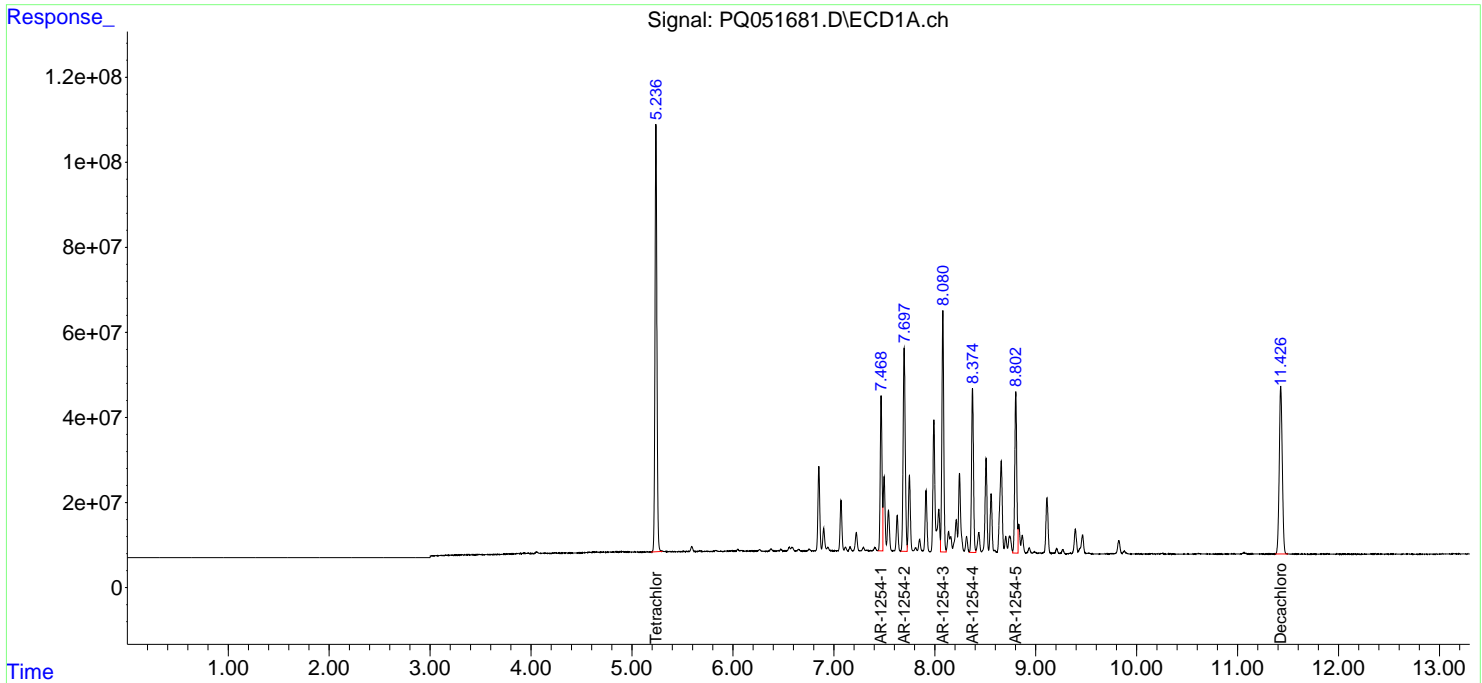
(f)=RT Delta > 1/2 Window (#)=Amounts differ by > 25% (m)=manual int.

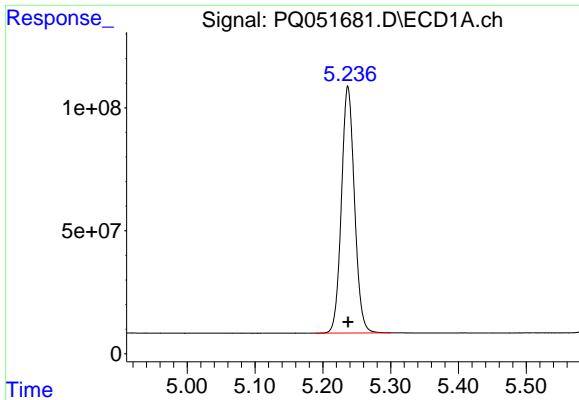
Data Path : Z:\pestpcbsrv\HPCHEM1\ECD_Q\Data\PQ011321\
 Data File : PQ051681.D
 Signal(s) : Signal #1: ECD1A.ch Signal #2: ECD2B.ch
 Acq On : 12 Jan 2021 19:49
 Operator : DD\AJ
 Sample : AR1254ICC500
 Misc :
 ALS Vial : 12 Sample Multiplier: 1

Instrument :
 ECD_Q
Client Sampled :
 AR1254ICC500

Integration File signal 1: autoint1.e
 Integration File signal 2: autoint2.e
 Quant Time: Jan 13 03:08:40 2021
 Quant Method : Z:\pestpcbsrv\HPCHEM1\ECD_Q\Method\PQ011321.M
 Quant Title : GC EXTRACTABLES
 QLast Update : Wed Jan 13 03:08:20 2021
 Response via : Initial Calibration
 Integrator: ChemStation

Volume Inj. : 2 µl
 Signal #1 Phase : ZB-MR1 Signal #2 Phase: ZB-MR2
 Signal #1 Info : 30Mx0.32mmx 0.50µm Signal #2 Info : 30M x 0.32mm x 0.25µm

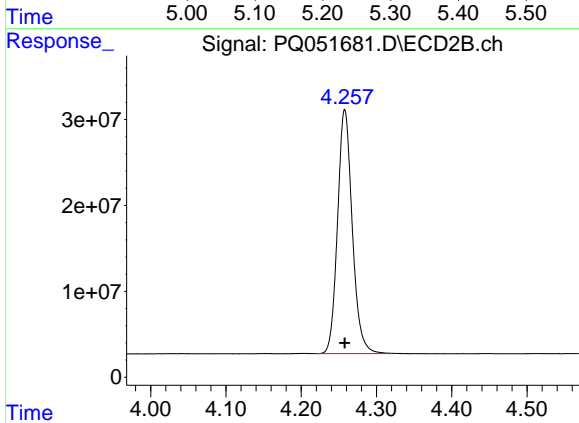




#1 Tetrachloro-m-xylene

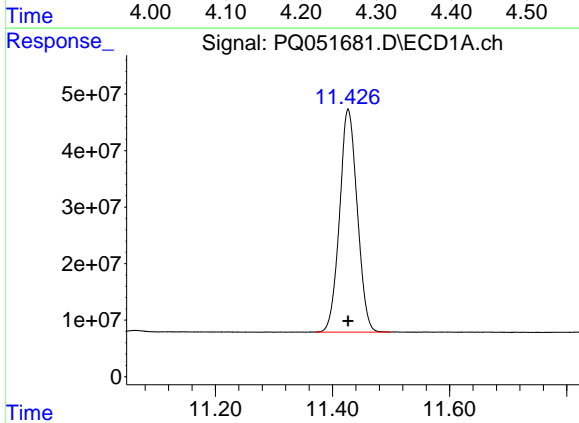
R.T.: 5.237 min
 Delta R.T.: 0.000 min
 Response: 1341126656
 Conc: 50.00 ng/ml

Instrument :
 ECD_Q
 ClientSampleId :
 AR1254ICC500



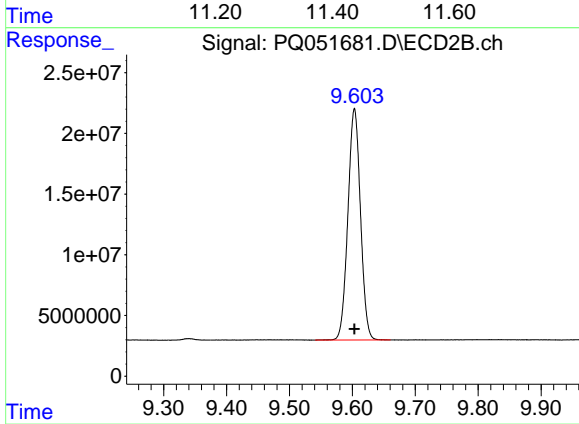
#1 Tetrachloro-m-xylene

R.T.: 4.258 min
 Delta R.T.: 0.000 min
 Response: 386898159
 Conc: 50.00 ng/ml



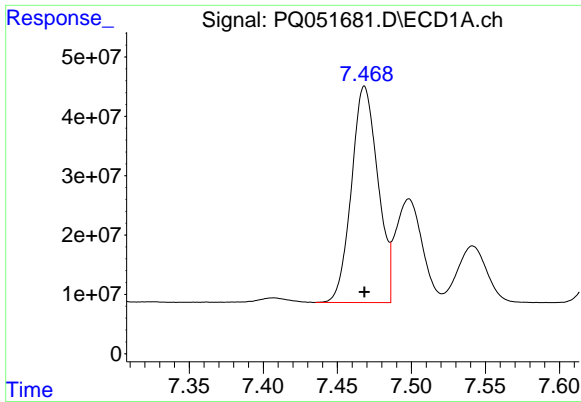
#2 Decachlorobiphenyl

R.T.: 11.427 min
 Delta R.T.: 0.000 min
 Response: 825592791
 Conc: 50.00 ng/ml



#2 Decachlorobiphenyl

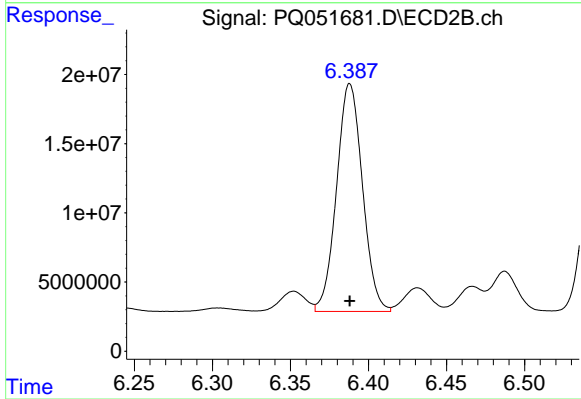
R.T.: 9.603 min
 Delta R.T.: 0.000 min
 Response: 264849884
 Conc: 50.00 ng/ml



#26 AR-1254-1

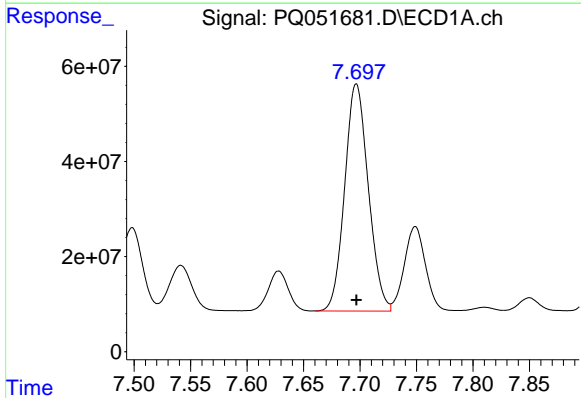
R.T.: 7.468 min
 Delta R.T.: 0.000 min
 Response: 452699727
 Conc: 500.00 ng/ml

Instrument :
 ECD_Q
 ClientSampleId :
 AR1254ICC500



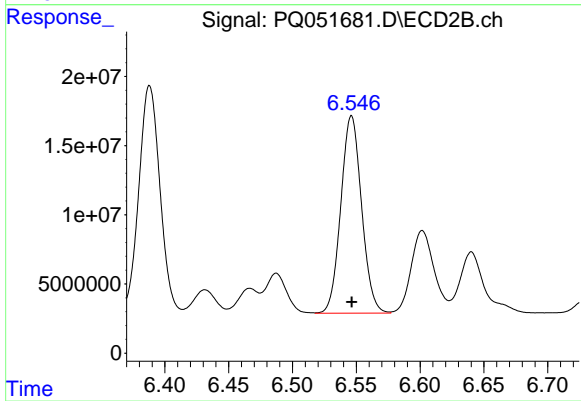
#26 AR-1254-1

R.T.: 6.388 min
 Delta R.T.: 0.000 min
 Response: 190275970
 Conc: 500.00 ng/ml



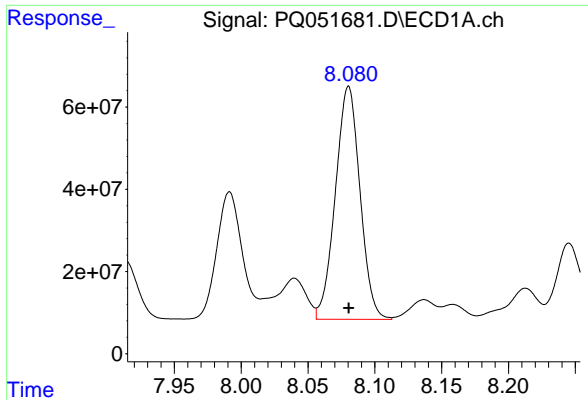
#27 AR-1254-2

R.T.: 7.697 min
 Delta R.T.: 0.000 min
 Response: 695511276
 Conc: 500.00 ng/ml



#27 AR-1254-2

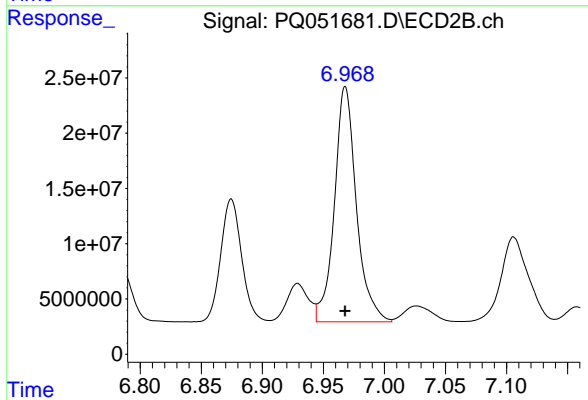
R.T.: 6.546 min
 Delta R.T.: 0.000 min
 Response: 161527623
 Conc: 500.00 ng/ml



#28 AR-1254-3

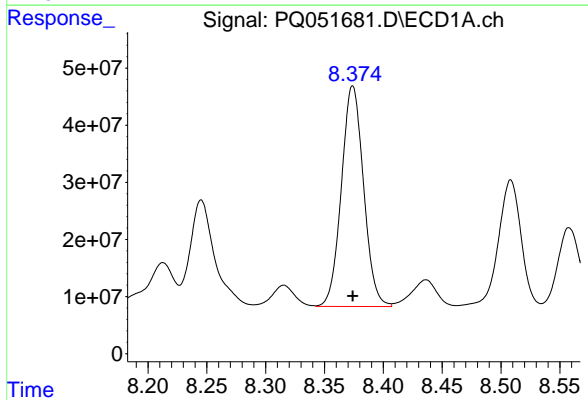
R.T.: 8.080 min
Delta R.T.: 0.000 min
Response: 726326839
Conc: 500.00 ng/ml

Instrument :
ECD_Q
ClientSampleId :
AR1254ICC500



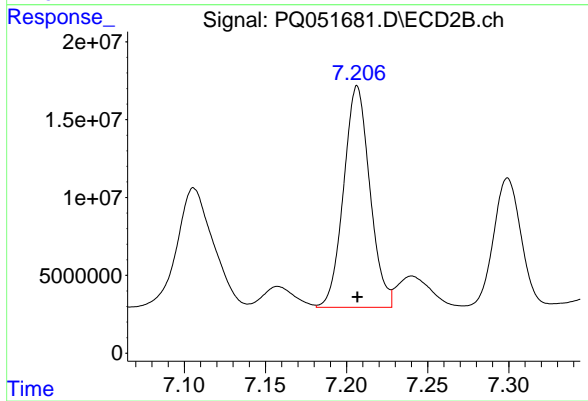
#28 AR-1254-3

R.T.: 6.968 min
Delta R.T.: 0.000 min
Response: 266678855
Conc: 500.00 ng/ml



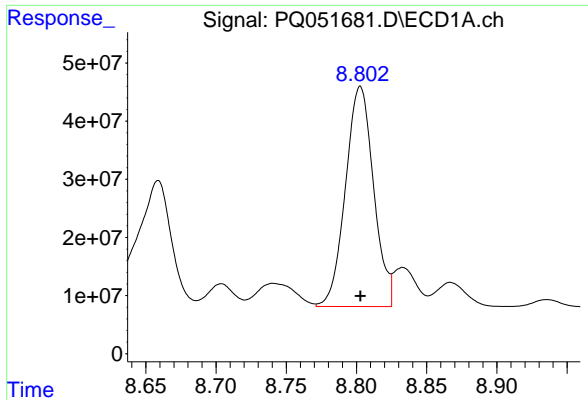
#29 AR-1254-4

R.T.: 8.374 min
Delta R.T.: 0.000 min
Response: 506474852
Conc: 500.00 ng/ml



#29 AR-1254-4

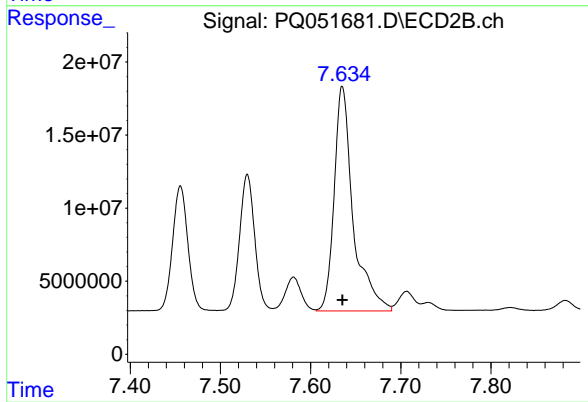
R.T.: 7.207 min
Delta R.T.: 0.000 min
Response: 160089965
Conc: 500.00 ng/ml



#30 AR-1254-5

R.T.: 8.803 min
Delta R.T.: 0.000 min
Response: 527647005
Conc: 500.00 ng/ml

Instrument :
ECD_Q
ClientSampleId :
AR1254ICC500



#30 AR-1254-5

R.T.: 7.635 min
Delta R.T.: 0.000 min
Response: 224613324
Conc: 500.00 ng/ml