

Data Path : Z:\pestpcbsrv\HPCHEM1\ECD_Q\Data\PQ011719\
 Data File : PQ036509.D
 Signal(s) : Signal #1: ECD1A.ch Signal #2: ECD2B.ch
 Acq On : 17 Jan 2019 19:40
 Operator : SM\SJ
 Sample : K1153-01
 Misc :
 ALS Vial : 23 Sample Multiplier: 1

Instrument :
 ECD_Q
ClientSampleId :
 RBR200044-RBR200027

Manual Integrations
APPROVED
 Sohil
 1/18/2019 9:11:21 AM

Integration File signal 1: autoint1.e
 Integration File signal 2: autoint2.e
 Quant Time: Jan 18 00:54:18 2019
 Quant Method : Z:\pestpcbsrv\HPCHEM1\ECD_Q\Method\PQ010819.M
 Quant Title : GC EXTRACTABLES
 QLast Update : Wed Jan 09 07:07:45 2019
 Response via : Initial Calibration
 Integrator: ChemStation

Volume Inj. : 2 µl
 Signal #1 Phase : ZB-MR1 Signal #2 Phase: ZB-MR2
 Signal #1 Info : 30Mx0.32mmx 0.50µ Signal #2 Info : 30M x 0.32mm x 0.25µm

Compound	RT#1	RT#2	Resp#1	Resp#2	ng/ml	ng/ml

System Monitoring Compounds						
1) SA Tetrachlo...	4.372	3.716	79316714	45831102	17.350	18.935m
2) SA Decachlor...	9.999	8.666	56448708	29405503	15.519	15.296

Target Compounds

(f)=RT Delta > 1/2 Window (#)=Amounts differ by > 25% (m)=manual int.

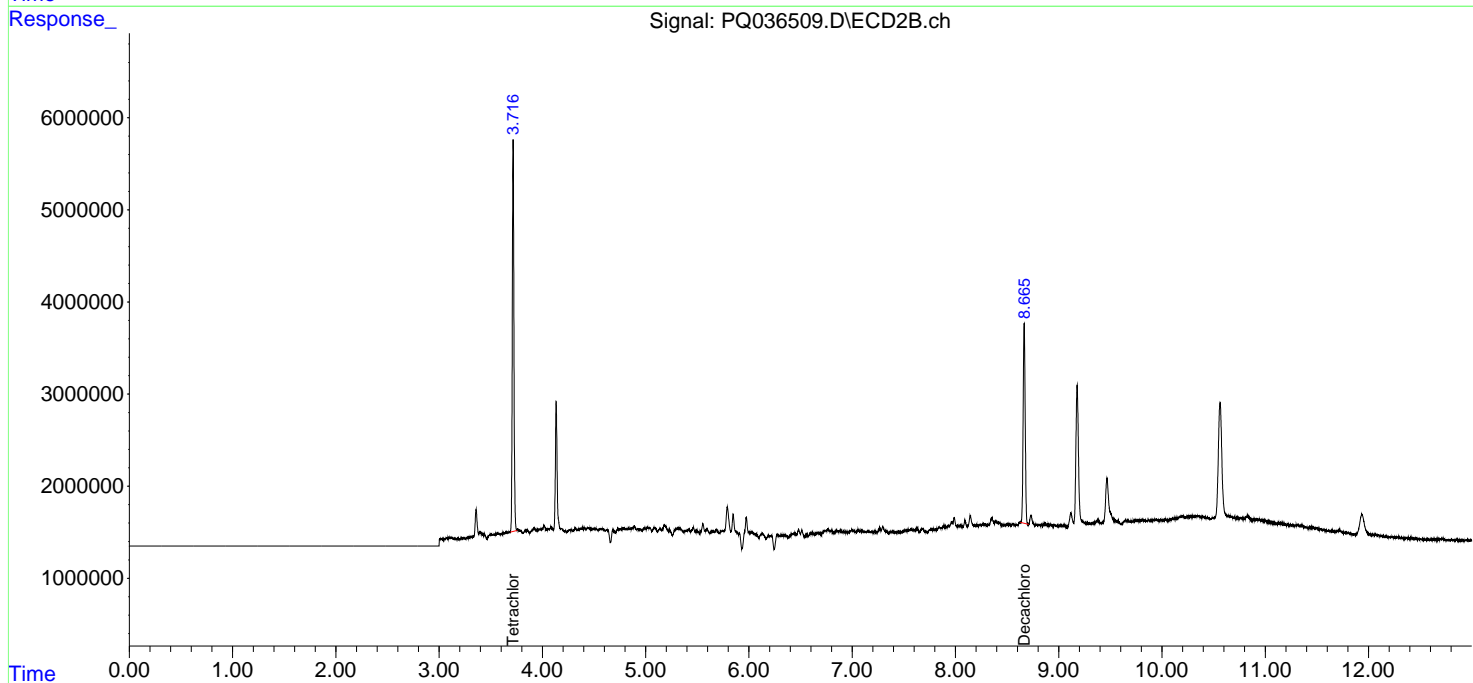
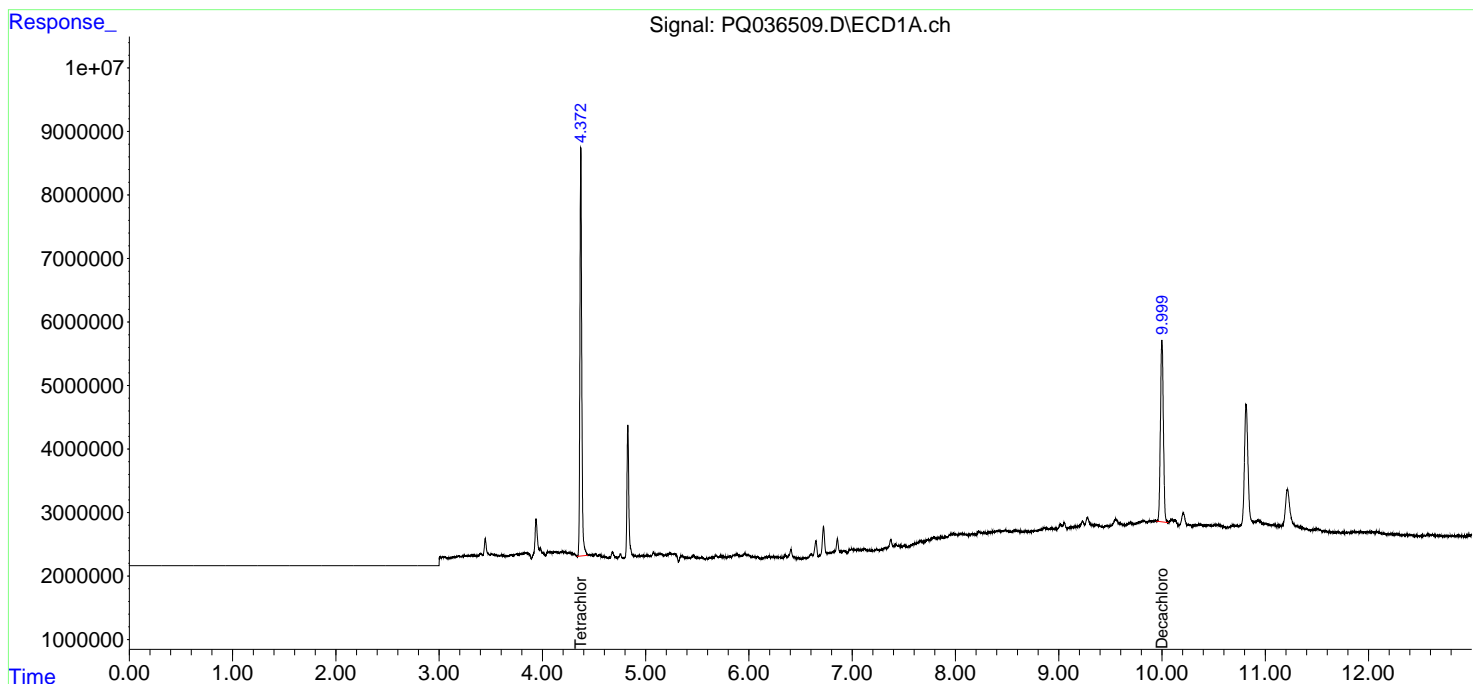
Data Path : Z:\pestpcbsrv\HPCHEM1\ECD_Q\Data\PQ011719\
 Data File : PQ036509.D
 Signal(s) : Signal #1: ECD1A.ch Signal #2: ECD2B.ch
 Acq On : 17 Jan 2019 19:40
 Operator : SM\SJ
 Sample : K1153-01
 Misc :
 ALS Vial : 23 Sample Multiplier: 1

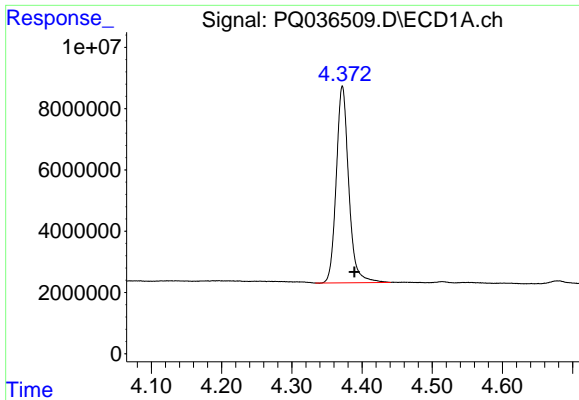
Instrument :
 ECD_Q
ClientSampled :
 RBR200044-RBR200027

Manual Integrations
APPROVED
 Sohil
 1/18/2019 9:11:21 AM

Integration File signal 1: autoint1.e
 Integration File signal 2: autoint2.e
 Quant Time: Jan 18 00:54:18 2019
 Quant Method : Z:\pestpcbsrv\HPCHEM1\ECD_Q\Method\PQ010819.M
 Quant Title : GC EXTRACTABLES
 QLast Update : Wed Jan 09 07:07:45 2019
 Response via : Initial Calibration
 Integrator: ChemStation

Volume Inj. : 2 µl
 Signal #1 Phase : ZB-MR1 Signal #2 Phase: ZB-MR2
 Signal #1 Info : 30Mx0.32mmx 0.50µ Signal #2 Info : 30M x 0.32mm x 0.25µm

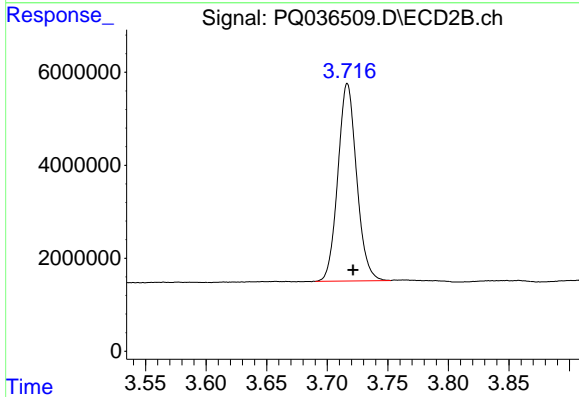




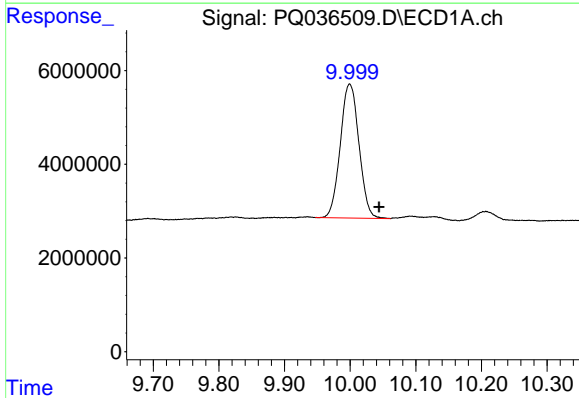
#1 Tetrachloro-m-xylene
 R.T.: 4.372 min
 Delta R.T.: -0.017 min
 Response: 79316714
 Conc: 17.35 ng/ml

Instrument :
 ECD_Q
ClientSampled :
 RBR200044-RBR200027

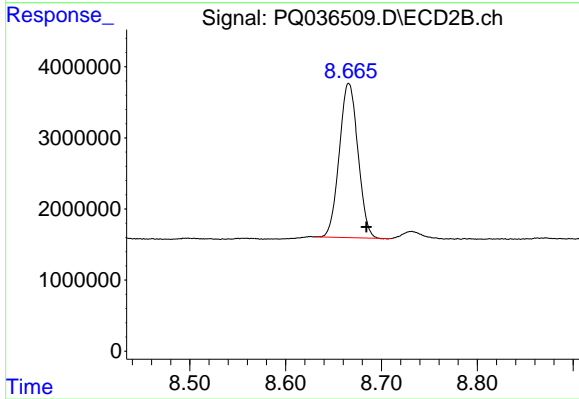
Manual Integrations
APPROVED
 Sohil
 1/18/2019 9:11:21 AM



#1 Tetrachloro-m-xylene
 R.T.: 3.716 min
 Delta R.T.: -0.005 min
 Response: 45831102
 Conc: 18.93 ng/ml m



#2 Decachlorobiphenyl
 R.T.: 9.999 min
 Delta R.T.: -0.045 min
 Response: 56448708
 Conc: 15.52 ng/ml



#2 Decachlorobiphenyl
 R.T.: 8.666 min
 Delta R.T.: -0.018 min
 Response: 29405503
 Conc: 15.30 ng/ml