

Data Path : Z:\pestpcbsrv\HPCHEM1\ECD\_Q\Data\PQ011819\  
 Data File : PQ036516.D  
 Signal(s) : Signal #1: ECD1A.ch Signal #2: ECD2B.ch  
 Acq On : 18 Jan 2019 10:55  
 Operator : SM\SJ  
 Sample : K1157-13  
 Misc :  
 ALS Vial : 9 Sample Multiplier: 1

**Instrument :**  
 ECD\_Q  
**ClientSampleId :**  
 WC-07-011519

**Manual Integrations**  
**APPROVED**  
 Sohil  
 1/21/2019 10:08:16 AM

Integration File signal 1: autoint1.e  
 Integration File signal 2: autoint2.e  
 Quant Time: Jan 18 21:42:34 2019  
 Quant Method : Z:\pestpcbsrv\HPCHEM1\ECD\_Q\Method\PQ010819.M  
 Quant Title : GC EXTRACTABLES  
 QLast Update : Wed Jan 09 07:07:45 2019  
 Response via : Initial Calibration  
 Integrator: ChemStation

Volume Inj. : 2 µl  
 Signal #1 Phase : ZB-MR1 Signal #2 Phase: ZB-MR2  
 Signal #1 Info : 30Mx0.32mmx 0.50µ Signal #2 Info : 30M x 0.32mm x 0.25µm

| Compound                    | RT#1   | RT#2  | Resp#1   | Resp#2   | ng/ml  | ng/ml   |
|-----------------------------|--------|-------|----------|----------|--------|---------|
| -----                       |        |       |          |          |        |         |
| System Monitoring Compounds |        |       |          |          |        |         |
| 1) SA Tetrachlo...          | 4.394  | 3.717 | 92428031 | 49274853 | 20.218 | 20.358  |
| 2) SA Decachlor...          | 10.050 | 8.683 | 60116060 | 30585928 | 16.527 | 15.910m |

Target Compounds

(f)=RT Delta > 1/2 Window (#)=Amounts differ by > 25% (m)=manual int.

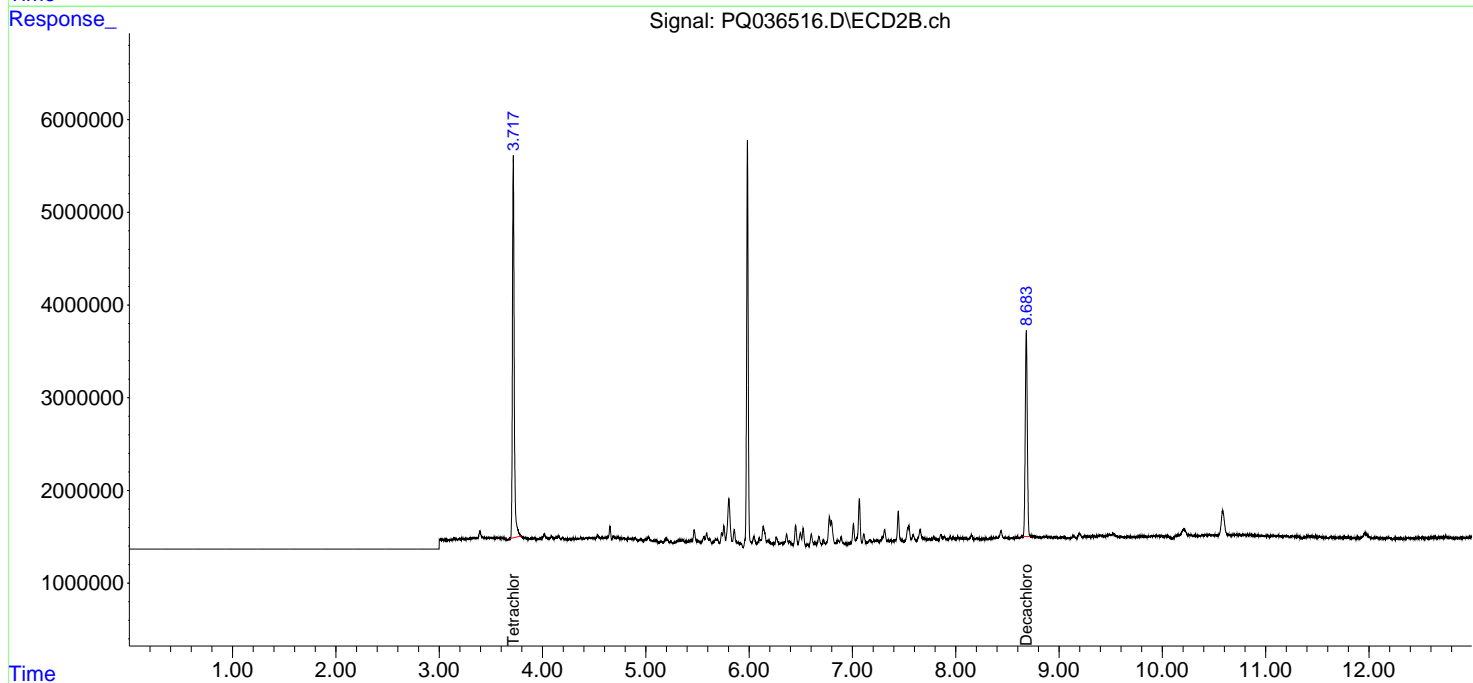
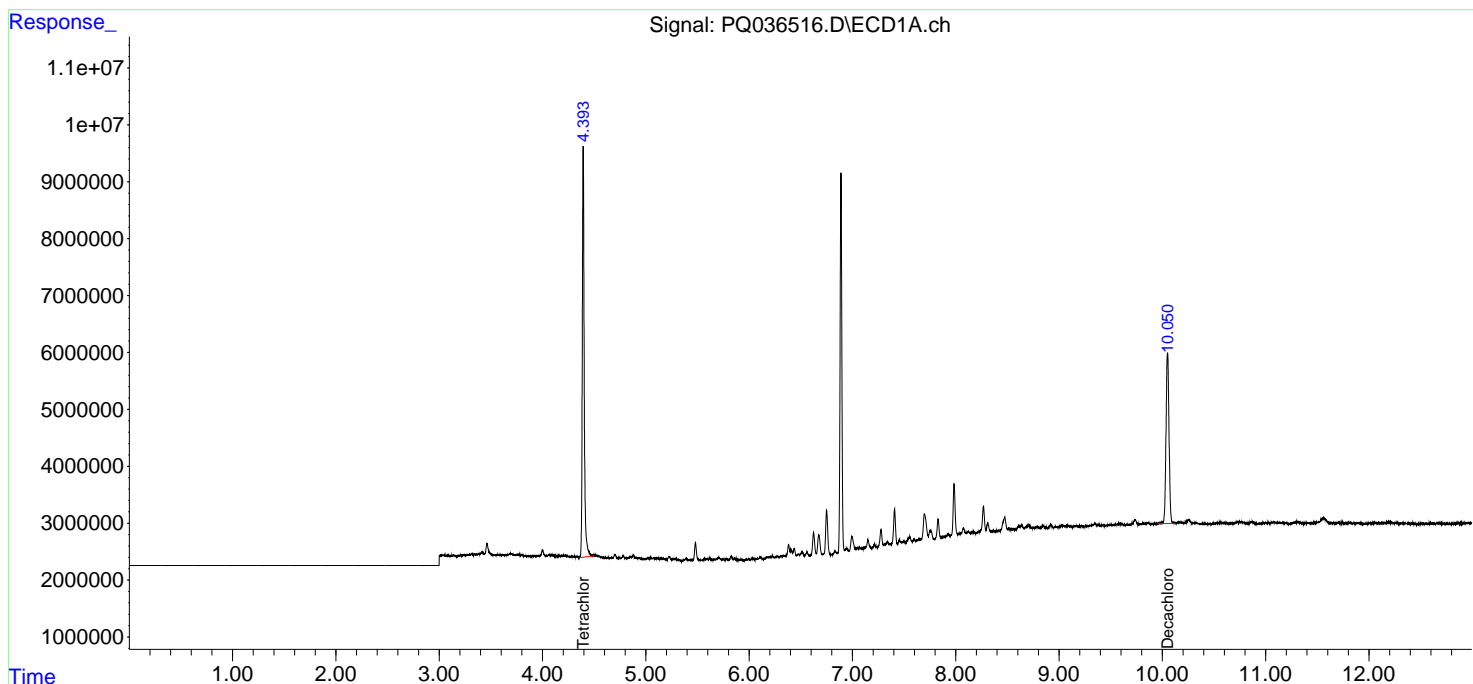
Data Path : Z:\pestpcbsrv\HPCHEM1\ECD\_Q\Data\PQ011819\  
 Data File : PQ036516.D  
 Signal(s) : Signal #1: ECD1A.ch Signal #2: ECD2B.ch  
 Acq On : 18 Jan 2019 10:55  
 Operator : SM\SJ  
 Sample : K1157-13  
 Misc :  
 ALS Vial : 9 Sample Multiplier: 1

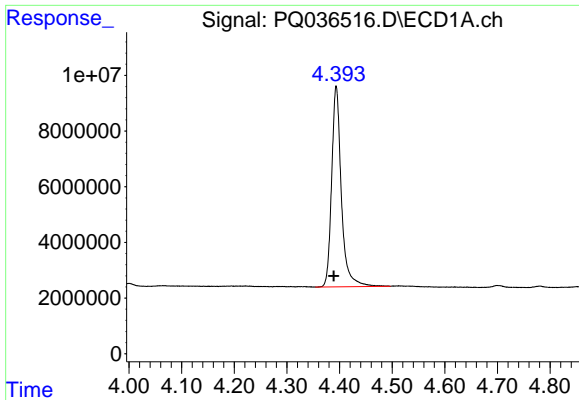
**Instrument :**  
 ECD\_Q  
**ClientSampleId :**  
 WC-07-011519

**Manual Integrations**  
**APPROVED**  
 Sohil  
 1/21/2019 10:08:16 AM

Integration File signal 1: autoint1.e  
 Integration File signal 2: autoint2.e  
 Quant Time: Jan 18 21:42:34 2019  
 Quant Method : Z:\pestpcbsrv\HPCHEM1\ECD\_Q\Method\PQ010819.M  
 Quant Title : GC EXTRACTABLES  
 QLast Update : Wed Jan 09 07:07:45 2019  
 Response via : Initial Calibration  
 Integrator: ChemStation

Volume Inj. : 2 µl  
 Signal #1 Phase : ZB-MR1 Signal #2 Phase: ZB-MR2  
 Signal #1 Info : 30Mx0.32mmx 0.50µm Signal #2 Info : 30M x 0.32mm x 0.25µm

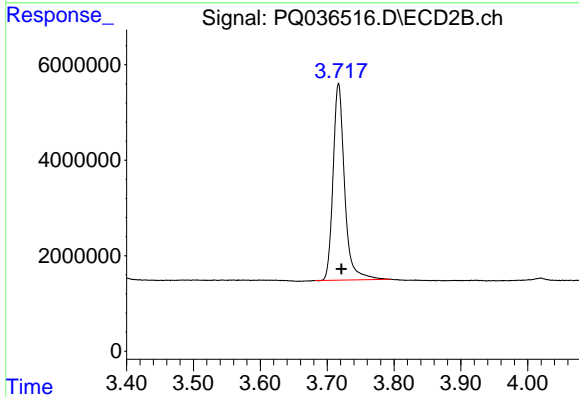




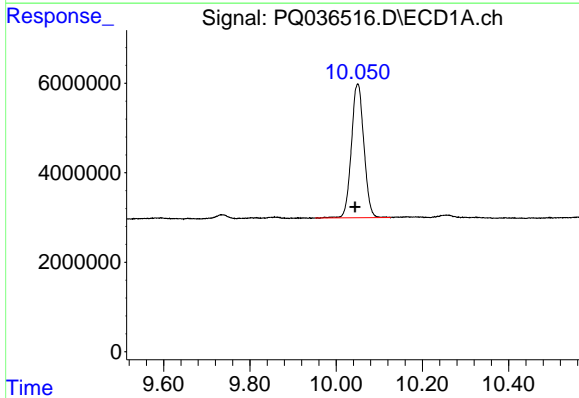
#1 Tetrachloro-m-xylene  
 R.T.: 4.394 min  
 Delta R.T.: 0.005 min  
 Response: 92428031  
 Conc: 20.22 ng/ml

Instrument :  
 ECD\_Q  
 ClientSampleId :  
 WC-07-011519

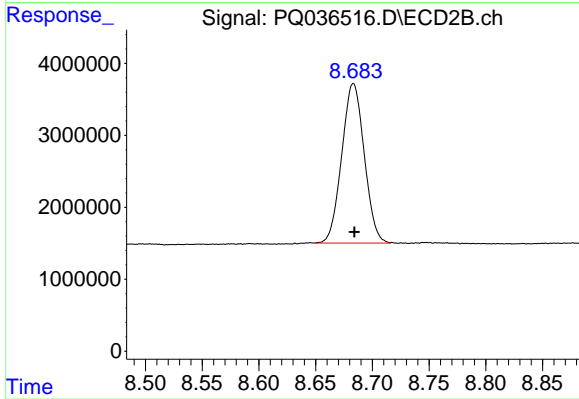
Manual Integrations  
 APPROVED  
 Sohil  
 1/21/2019 10:08:16 AM



#1 Tetrachloro-m-xylene  
 R.T.: 3.717 min  
 Delta R.T.: -0.004 min  
 Response: 49274853  
 Conc: 20.36 ng/ml



#2 Decachlorobiphenyl  
 R.T.: 10.050 min  
 Delta R.T.: 0.006 min  
 Response: 60116060  
 Conc: 16.53 ng/ml



#2 Decachlorobiphenyl  
 R.T.: 8.683 min  
 Delta R.T.: -0.001 min  
 Response: 30585928  
 Conc: 15.91 ng/ml m