

Data Path : Z:\pestpcbsrv\HPCHEM1\ECD\_Q\Data\PQ011821\  
 Data File : PQ051789.D  
 Signal(s) : Signal #1: ECD1A.ch Signal #2: ECD2B.ch  
 Acq On : 18 Jan 2021 16:59  
 Operator : DD\AJ  
 Sample : AIBLK17  
 Misc :  
 ALS Vial : 2 Sample Multiplier: 1

Integration File signal 1: autoint1.e  
 Integration File signal 2: autoint2.e  
 Quant Time: Jan 19 01:00:53 2021  
 Quant Method : Z:\pestpcbsrv\HPCHEM1\ECD\_Q\Method\PQ122120CLP.M  
 Quant Title : GC EXTRACTABLES  
 QLast Update : Tue Dec 22 06:18:29 2020  
 Response via : Initial Calibration  
 Integrator: ChemStation

Volume Inj. : 1 µl  
 Signal #1 Phase : ZB MR1 Signal #2 Phase: ZB MR2  
 Signal #1 Info : 30Mx0.32mmx 0.5µm Signal #2 Info : 30M x 0.32mm x 0.25µm

Compound	RT#1	RT#2	Resp#1	Resp#2	ng/ml	ng/ml
System Monitoring Compounds						
1) SA Tetrachlo...	5.234	4.253	556.3E6	173.5E6	21.573	23.761
2) SA Decachlor...	11.427	9.601	643.7E6	231.3E6	35.107	38.026
Target Compounds						
3) L1 AR-1016-1	6.556	5.517	3057033	47713	3.618	0.186 #
4) L1 AR-1016-2	6.595	5.517	4540599	47713	3.666	0.133 #
5) L1 AR-1016-3	6.604f	5.739	2538507	57914	3.469	0.315 #
6) L1 AR-1016-4	0.000	5.783	0	515745	N.D.	3.574 #
7) L1 AR-1016-5	0.000	6.028	0	442330	N.D.	2.325 #
8) L2 AR-1221-1	0.000	4.510	0	895820	N.D.	11.622 #
9) L2 AR-1221-2	5.589	4.609	7587286	2105130	41.540	39.364
10) L2 AR-1221-3	5.656	4.718	1326997	72710	2.150	0.397 #
11) L3 AR-1232-1	5.656	4.718	1326997	72710	2.883	0.532 #
12) L3 AR-1232-2	0.000	5.517	0	47713	N.D.	0.339 #
13) L3 AR-1232-3	6.595	5.739	4540599	57914	8.973	0.809 #
14) L3 AR-1232-4	0.000	5.814	0	337450	N.D.	5.489 #
15) L3 AR-1232-5	0.000	6.028	0	442330	N.D.	6.895 #
16) L4 AR-1242-1	6.556	5.517	3057033	47713	4.351	0.227 #
17) L4 AR-1242-2	6.595	5.517	4540599	47713	4.406	0.164 #
18) L4 AR-1242-3	6.604f	5.739	2538507	57914	4.129	0.384 #
19) L4 AR-1242-4	0.000	5.814	0	337450	N.D.	2.331 #
20) L4 AR-1242-5	0.000	6.393	0	423135	N.D.	2.215 #
21) L5 AR-1248-1	6.556	5.517	3057033	47713	5.404	0.284 #
22) L5 AR-1248-2	0.000	5.783	0	515745	N.D.	2.277 #
23) L5 AR-1248-3	0.000	5.814	0	337450	N.D.	1.435 #
24) L5 AR-1248-4	0.000	6.028	0	442330	N.D.	1.609 #
25) L5 AR-1248-5	0.000	6.429	0	333954	N.D.	1.157 #
26) L6 AR-1254-1	0.000	6.393	0	423135	N.D.	0.997 #
27) L6 AR-1254-2	0.000	6.548	0	319494	N.D.	0.870 #
28) L6 AR-1254-3	8.104	6.979	28088820	1511219	17.000	2.477 #
29) L6 AR-1254-4	0.000	7.216	0	325444	N.D.	0.862 #
30) L6 AR-1254-5	8.825	7.601f	29778748	112903	23.594	0.215 #
31) L7 AR-1260-1	0.000	7.089	0	394757	N.D.	1.113 #
32) L7 AR-1260-2	0.000	7.317	0	240791	N.D.	0.544 #
33) L7 AR-1260-3	8.825f	7.442	29778748	989025	32.792	2.387 #
34) L7 AR-1260-4	0.000	7.916	0	219888	N.D.	0.634 #
35) L7 AR-1260-5	0.000	8.142f	0	536738	N.D.	0.622 #
36) L8 AR-1262-1	8.825f	7.601f	29778748	112903	19.626	0.394 #
37) L8 AR-1262-2	0.000	8.142f	0	536738	N.D.	0.526 #
38) L8 AR-1262-3	0.000	8.515f	0	12857765	N.D.	34.170 #
39) L8 AR-1262-4	0.000	8.515	0	12857765	N.D.	17.535 #
40) L8 AR-1262-5	0.000	9.083f	0	798957	N.D.	2.427 #
41) L9 AR-1268-1	0.000	8.515f	0	12857765	N.D.	11.071 #

Data Path : Z:\pestpcbsrv\HPCHEM1\ECD\_Q\Data\PQ011821\  
Data File : PQ051789.D  
Signal(s) : Signal #1: ECD1A.ch Signal #2: ECD2B.ch  
Acq On : 18 Jan 2021 16:59  
Operator : DD\AJ  
Sample : AIBLK17  
Misc :  
ALS Vial : 2 Sample Multiplier: 1

Integration File signal 1: autoint1.e  
Integration File signal 2: autoint2.e  
Quant Time: Jan 19 01:00:53 2021  
Quant Method : Z:\pestpcbsrv\HPCHEM1\ECD\_Q\Method\PQ122120CLP.M  
Quant Title : GC EXTRACTABLES  
QLast Update : Tue Dec 22 06:18:29 2020  
Response via : Initial Calibration  
Integrator: ChemStation

Volume Inj. : 1 µl  
Signal #1 Phase : ZB MR1 Signal #2 Phase: ZB MR2  
Signal #1 Info : 30Mx0.32mmx 0.5µm Signal #2 Info : 30M x 0.32mm x 0.25µm

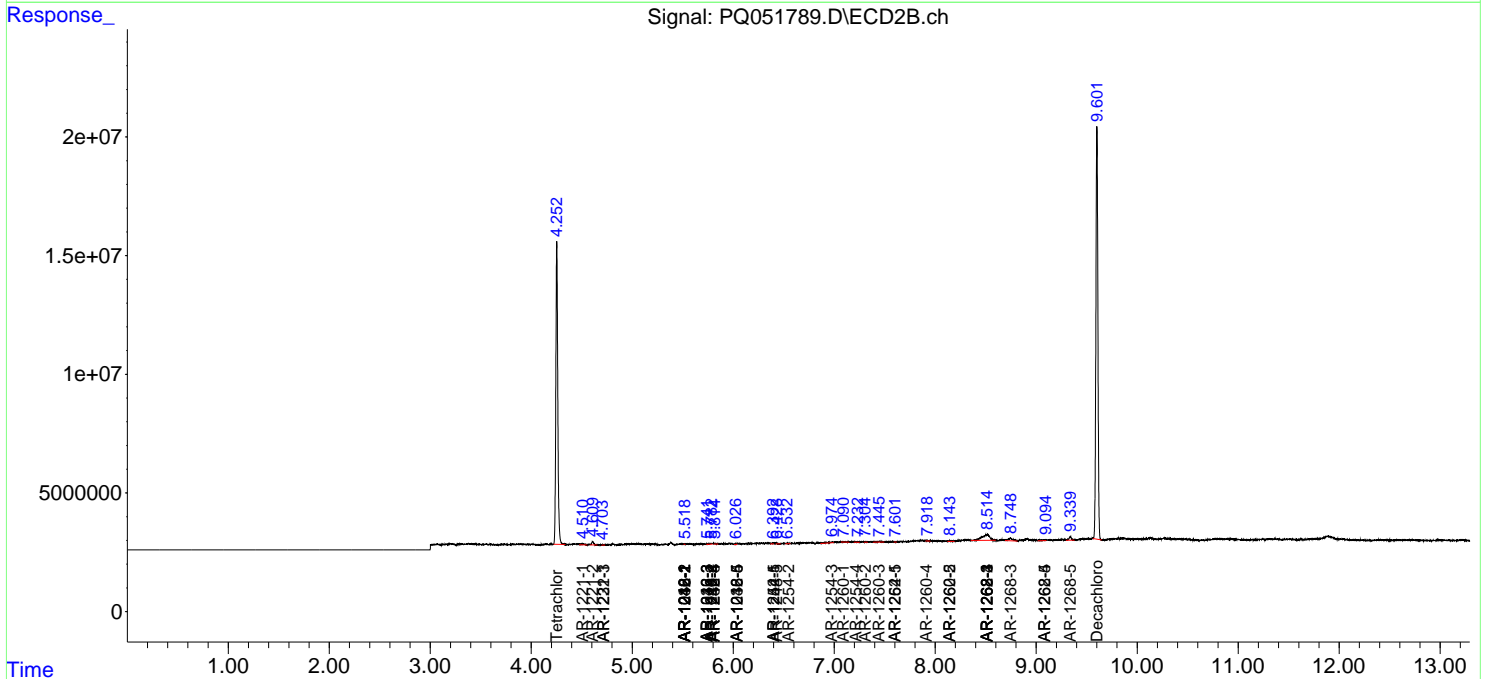
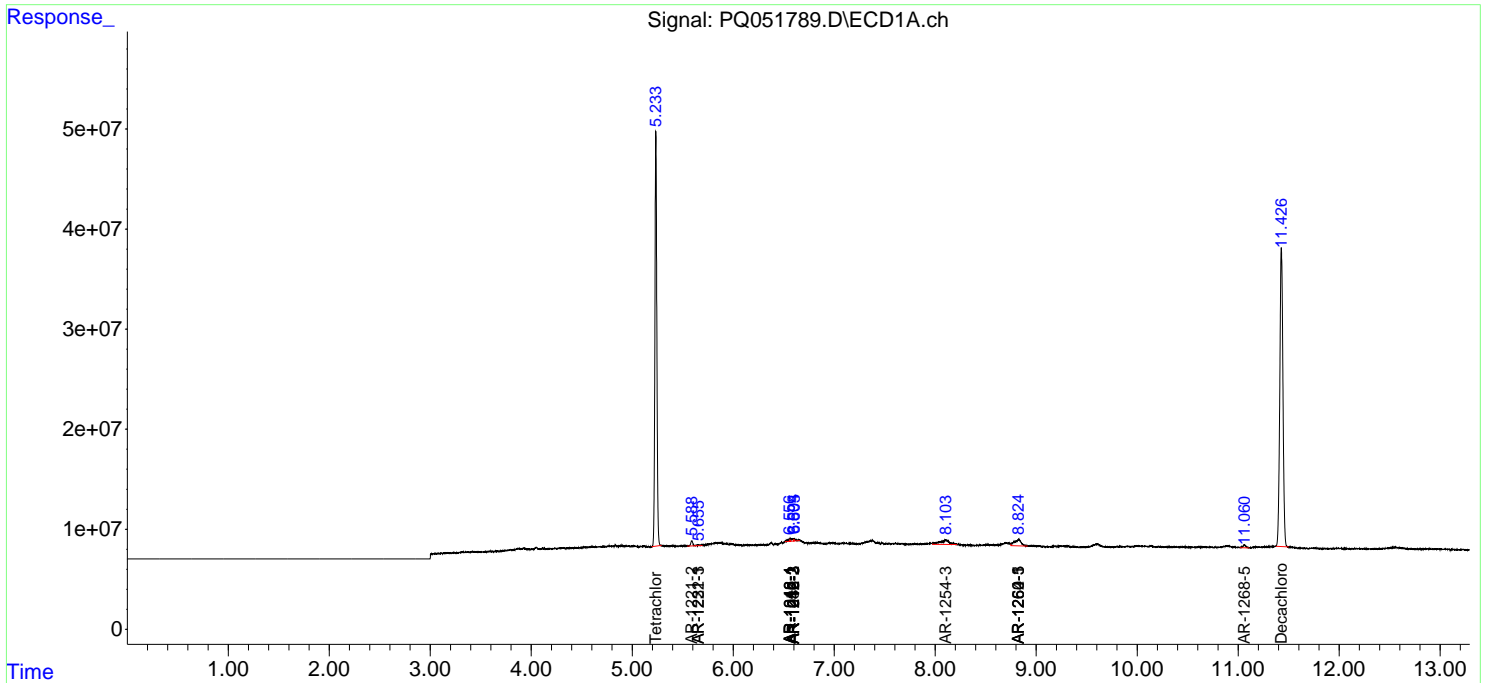
	Compound	RT#1	RT#2	Resp#1	Resp#2	ng/ml	ng/ml
42)	L9 AR-1268-2	0.000	8.515	0	12857765	N.D.	12.084 #
43)	L9 AR-1268-3	0.000	8.747	0	3832863	N.D.	4.300 #
44)	L9 AR-1268-4	0.000	9.083f	0	798957	N.D.	2.166 #
45)	L9 AR-1268-5	11.061	9.338	6254408	2403583	0.748	0.863

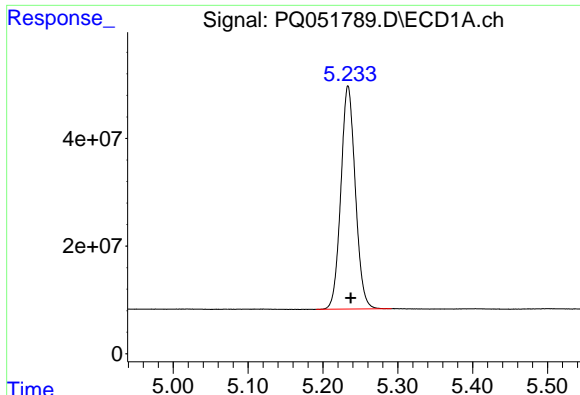
(f)=RT Delta > 1/2 Window (#)=Amounts differ by > 25% (m)=manual int.

Data Path : Z:\pestpcbsrv\HPCHEM1\ECD\_Q\Data\PQ011821\  
 Data File : PQ051789.D  
 Signal(s) : Signal #1: ECD1A.ch Signal #2: ECD2B.ch  
 Acq On : 18 Jan 2021 16:59  
 Operator : DD\AJ  
 Sample : AIBLK17  
 Misc :  
 ALS Vial : 2 Sample Multiplier: 1

Integration File signal 1: autoint1.e  
 Integration File signal 2: autoint2.e  
 Quant Time: Jan 19 01:00:53 2021  
 Quant Method : Z:\pestpcbsrv\HPCHEM1\ECD\_Q\Method\PQ122120CLP.M  
 Quant Title : GC EXTRACTABLES  
 QLast Update : Tue Dec 22 06:18:29 2020  
 Response via : Initial Calibration  
 Integrator: ChemStation

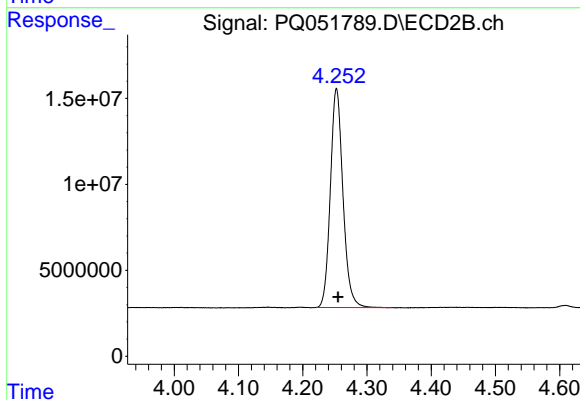
Volume Inj. : 1 µl  
 Signal #1 Phase : ZB MR1 Signal #2 Phase: ZB MR2  
 Signal #1 Info : 30Mx0.32mmx 0.5µm Signal #2 Info : 30M x 0.32mm x 0.25µm





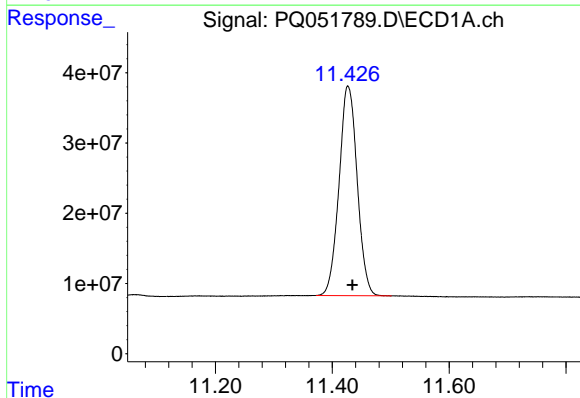
#1 Tetrachloro-m-xylene

R.T.: 5.234 min  
Delta R.T.: -0.003 min  
Response: 556259733  
Conc: 21.57 ng/ml



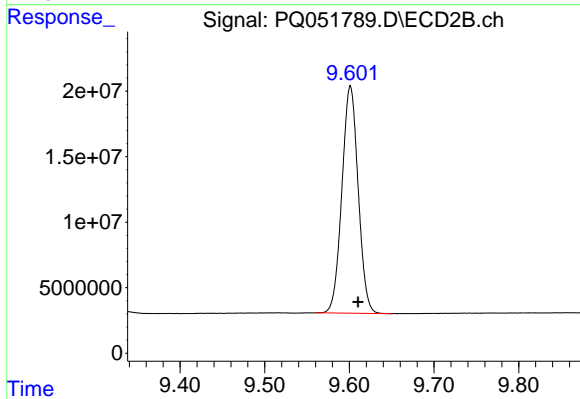
#1 Tetrachloro-m-xylene

R.T.: 4.253 min  
Delta R.T.: -0.003 min  
Response: 173529731  
Conc: 23.76 ng/ml



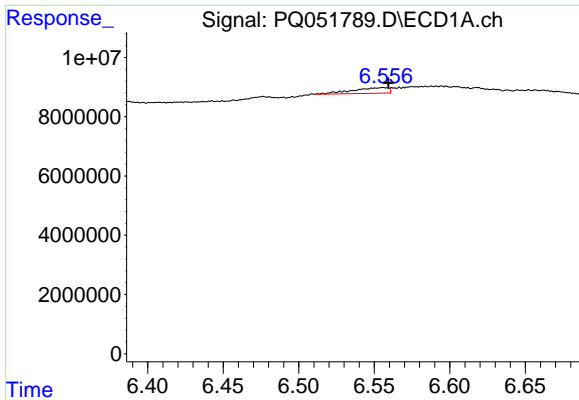
#2 Decachlorobiphenyl

R.T.: 11.427 min  
Delta R.T.: -0.008 min  
Response: 643671144  
Conc: 35.11 ng/ml



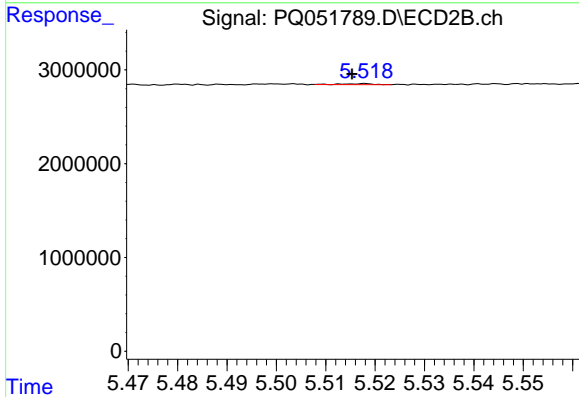
#2 Decachlorobiphenyl

R.T.: 9.601 min  
Delta R.T.: -0.009 min  
Response: 231263313  
Conc: 38.03 ng/ml



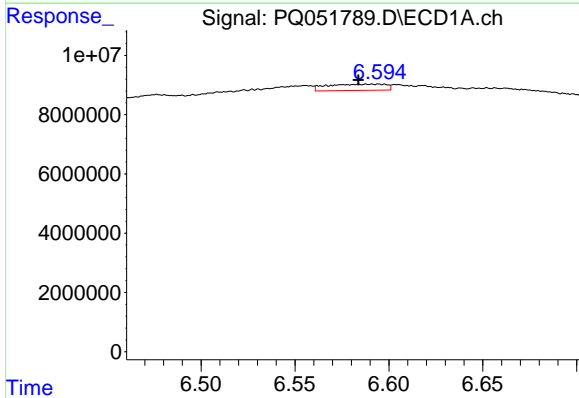
#3 AR-1016-1

R.T.: 6.556 min  
 Delta R.T.: -0.003 min  
 Response: 3057033  
 Conc: 3.62 ng/ml



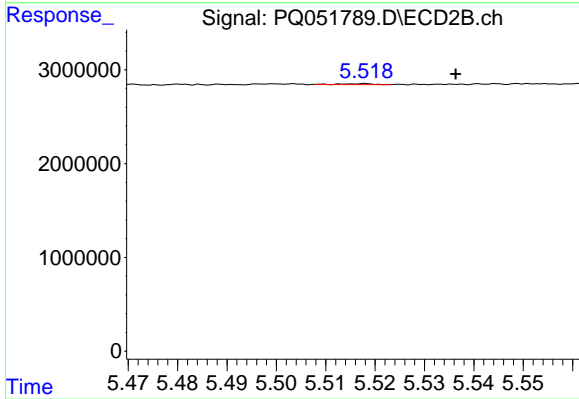
#3 AR-1016-1

R.T.: 5.517 min  
 Delta R.T.: 0.002 min  
 Response: 47713  
 Conc: 0.19 ng/ml



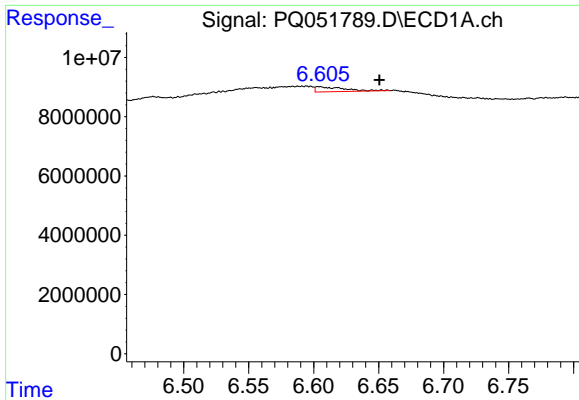
#4 AR-1016-2

R.T.: 6.595 min  
 Delta R.T.: 0.011 min  
 Response: 4540599  
 Conc: 3.67 ng/ml



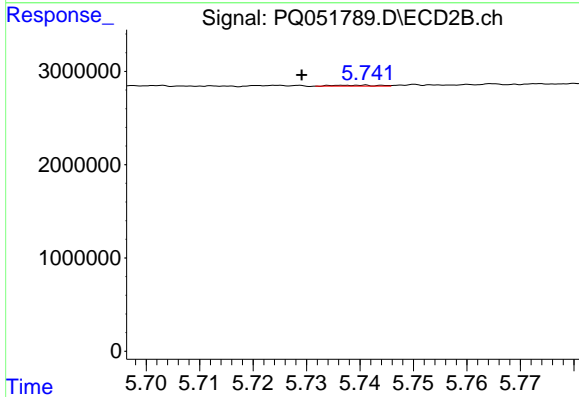
#4 AR-1016-2

R.T.: 5.517 min  
 Delta R.T.: -0.019 min  
 Response: 47713  
 Conc: 0.13 ng/ml



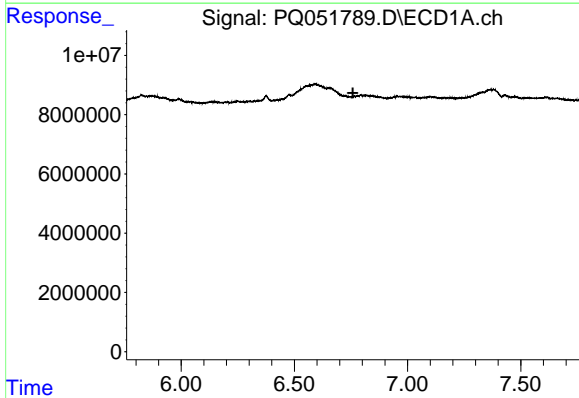
#5 AR-1016-3

R.T.: 6.604 min  
 Delta R.T.: -0.046 min  
 Response: 2538507  
 Conc: 3.47 ng/ml



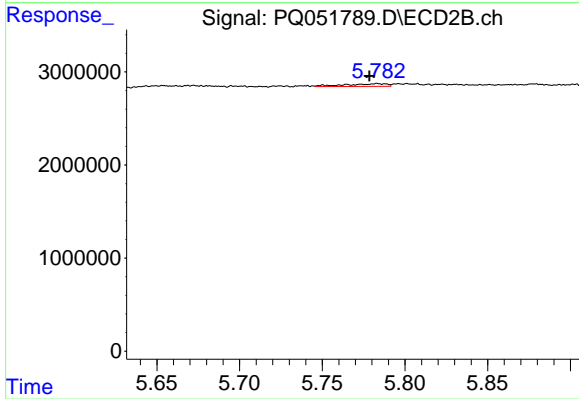
#5 AR-1016-3

R.T.: 5.739 min  
 Delta R.T.: 0.010 min  
 Response: 57914  
 Conc: 0.31 ng/ml



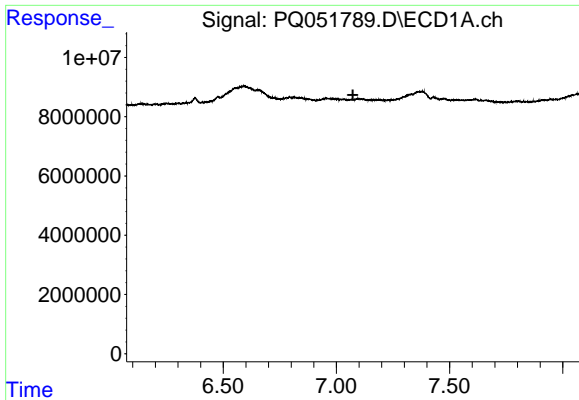
#6 AR-1016-4

R.T.: 0.000 min  
 Exp R.T. : 6.759 min  
 Response: 0  
 Conc: N.D.



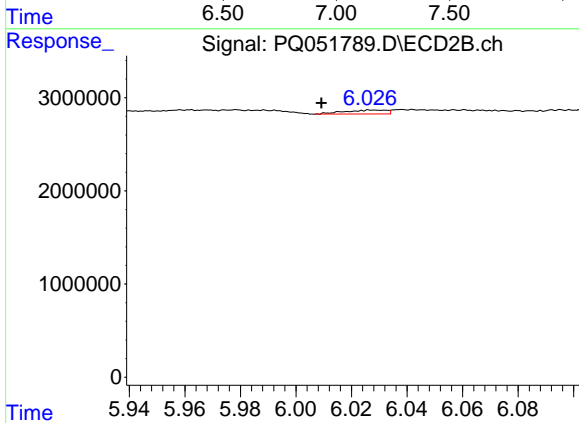
#6 AR-1016-4

R.T.: 5.783 min  
 Delta R.T.: 0.004 min  
 Response: 515745  
 Conc: 3.57 ng/ml



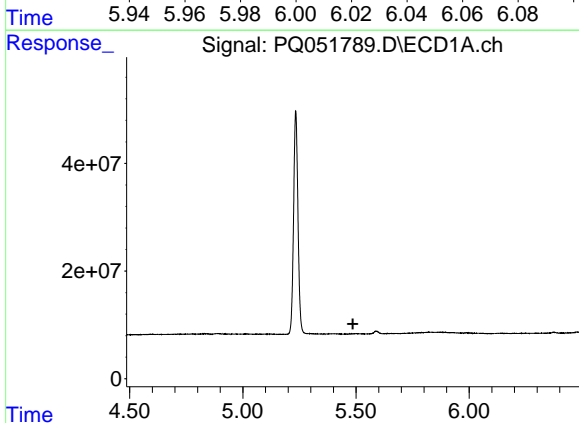
#7 AR-1016-5

R.T.: 0.000 min  
 Exp R.T. : 7.073 min  
 Response: 0  
 Conc: N.D.



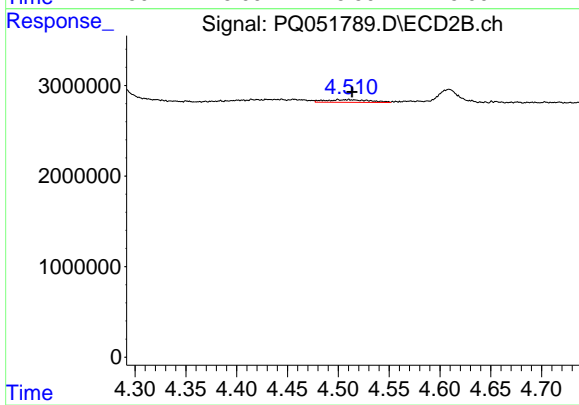
#7 AR-1016-5

R.T.: 6.028 min  
 Delta R.T.: 0.019 min  
 Response: 442330  
 Conc: 2.32 ng/ml



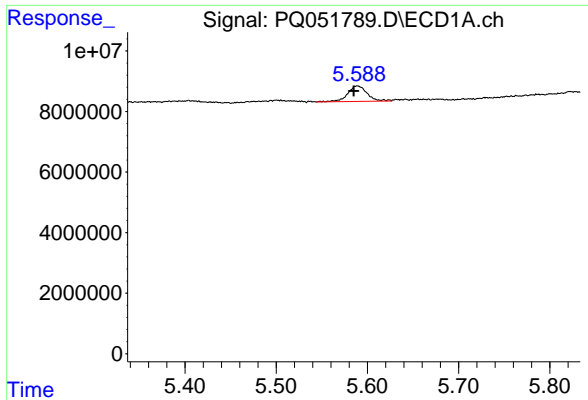
#8 AR-1221-1

R.T.: 0.000 min  
 Exp R.T. : 5.486 min  
 Response: 0  
 Conc: N.D.

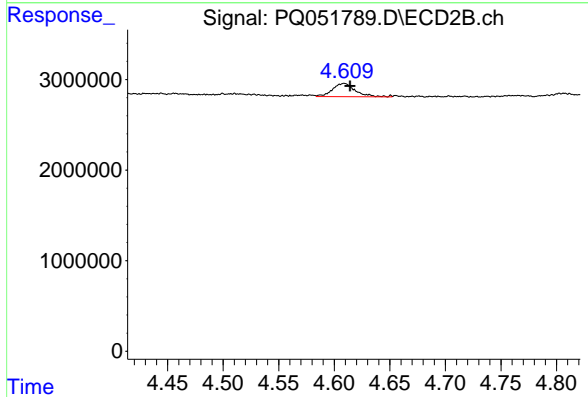


#8 AR-1221-1

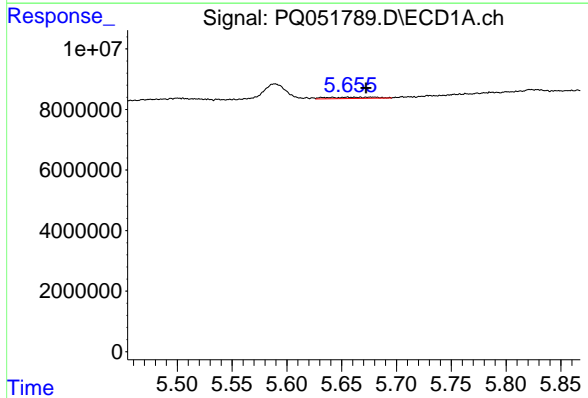
R.T.: 4.510 min  
 Delta R.T.: -0.003 min  
 Response: 895820  
 Conc: 11.62 ng/ml



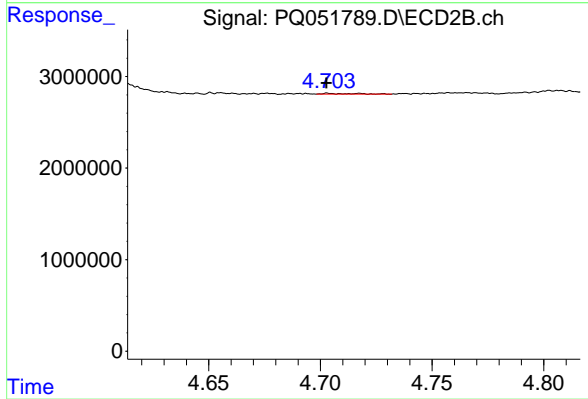
#9 AR-1221-2  
 R.T.: 5.589 min  
 Delta R.T.: 0.004 min  
 Response: 7587286  
 Conc: 41.54 ng/ml



#9 AR-1221-2  
 R.T.: 4.609 min  
 Delta R.T.: -0.005 min  
 Response: 2105130  
 Conc: 39.36 ng/ml

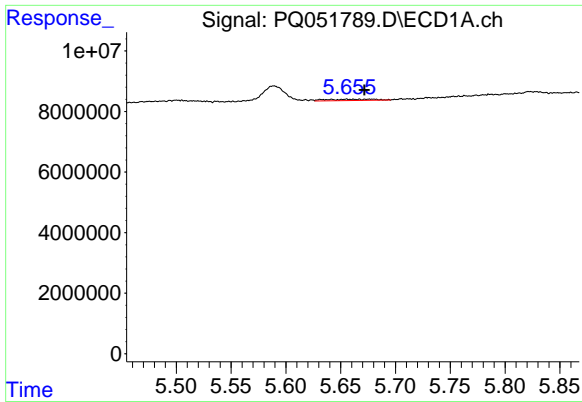


#10 AR-1221-3  
 R.T.: 5.656 min  
 Delta R.T.: -0.017 min  
 Response: 1326997  
 Conc: 2.15 ng/ml



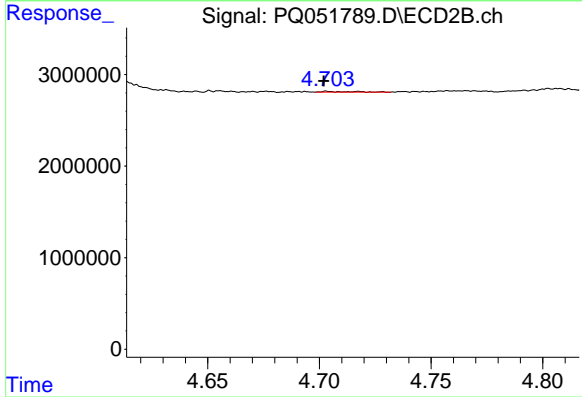
#10 AR-1221-3  
 R.T.: 4.718 min  
 Delta R.T.: 0.015 min  
 Response: 72710  
 Conc: 0.40 ng/ml





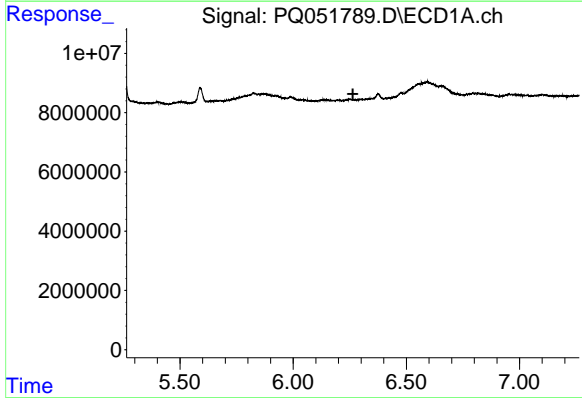
#11 AR-1232-1

R.T.: 5.656 min  
 Delta R.T.: -0.016 min  
 Response: 1326997  
 Conc: 2.88 ng/ml



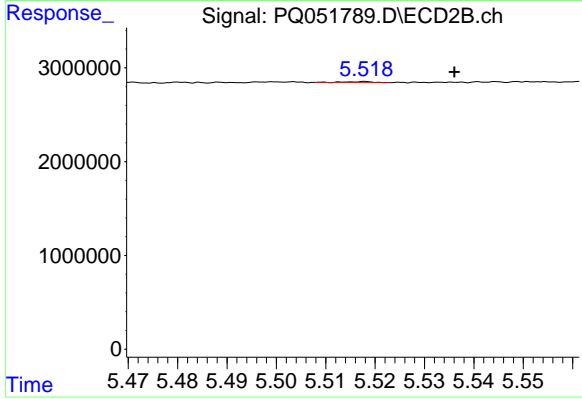
#11 AR-1232-1

R.T.: 4.718 min  
 Delta R.T.: 0.016 min  
 Response: 72710  
 Conc: 0.53 ng/ml



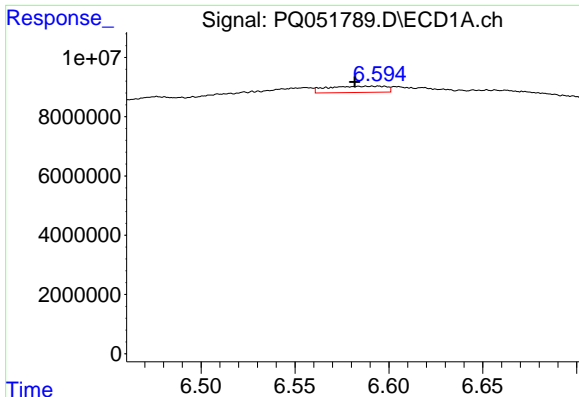
#12 AR-1232-2

R.T.: 0.000 min  
 Exp R.T. : 6.264 min  
 Response: 0  
 Conc: N.D.



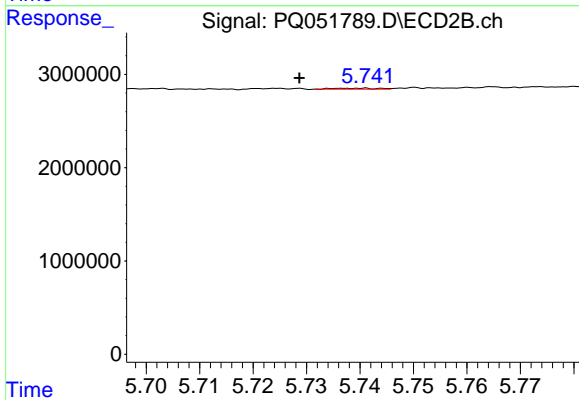
#12 AR-1232-2

R.T.: 5.517 min  
 Delta R.T.: -0.019 min  
 Response: 47713  
 Conc: 0.34 ng/ml



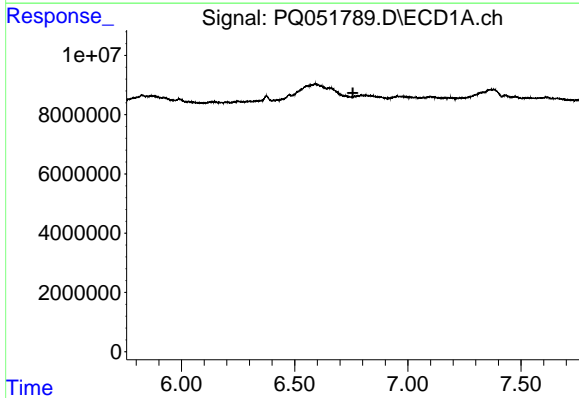
#13 AR-1232-3

R.T.: 6.595 min  
Delta R.T.: 0.013 min  
Response: 4540599  
Conc: 8.97 ng/ml



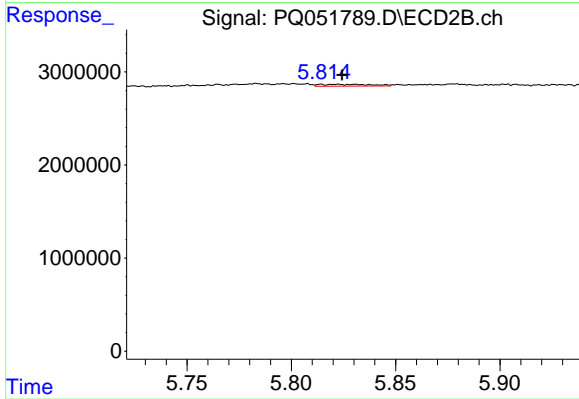
#13 AR-1232-3

R.T.: 5.739 min  
Delta R.T.: 0.010 min  
Response: 57914  
Conc: 0.81 ng/ml



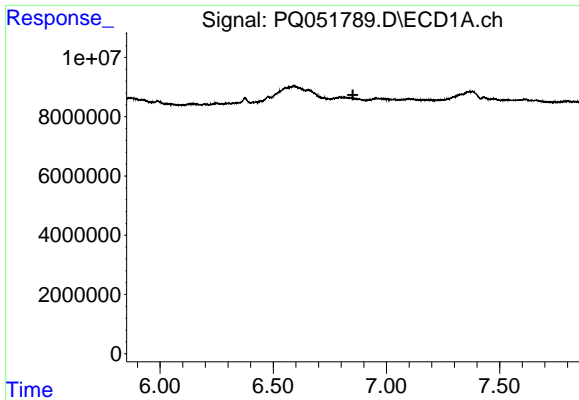
#14 AR-1232-4

R.T.: 0.000 min  
Exp R.T. : 6.757 min  
Response: 0  
Conc: N.D.



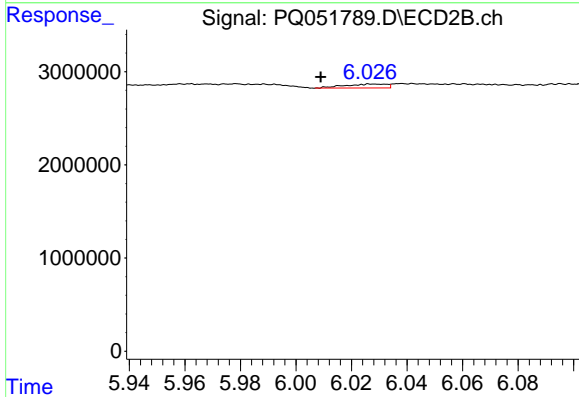
#14 AR-1232-4

R.T.: 5.814 min  
Delta R.T.: -0.010 min  
Response: 337450  
Conc: 5.49 ng/ml



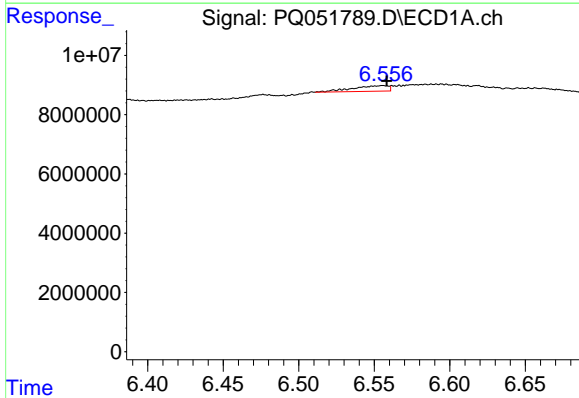
#15 AR-1232-5

R.T.: 0.000 min  
 Exp R.T. : 6.852 min  
 Response: 0  
 Conc: N.D.



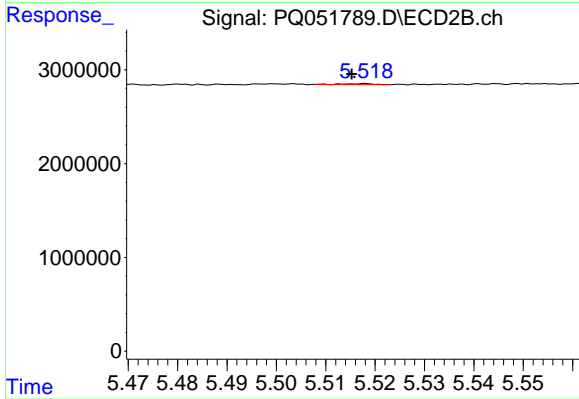
#15 AR-1232-5

R.T.: 6.028 min  
 Delta R.T.: 0.019 min  
 Response: 442330  
 Conc: 6.90 ng/ml



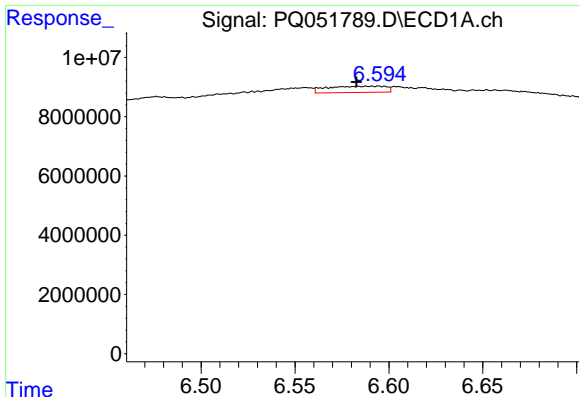
#16 AR-1242-1

R.T.: 6.556 min  
 Delta R.T.: -0.002 min  
 Response: 3057033  
 Conc: 4.35 ng/ml



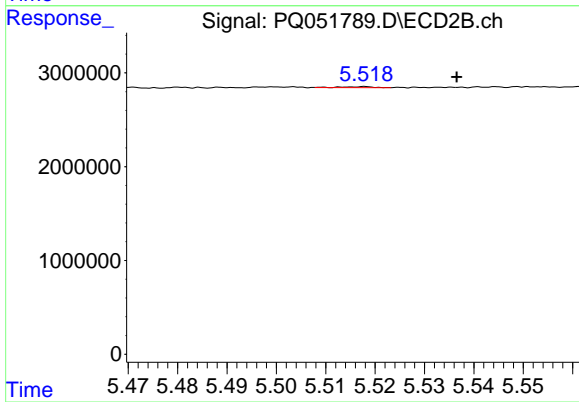
#16 AR-1242-1

R.T.: 5.517 min  
 Delta R.T.: 0.002 min  
 Response: 47713  
 Conc: 0.23 ng/ml



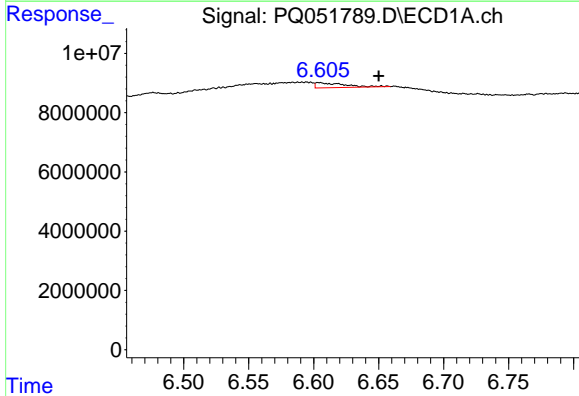
#17 AR-1242-2

R.T.: 6.595 min  
 Delta R.T.: 0.012 min  
 Response: 4540599  
 Conc: 4.41 ng/ml



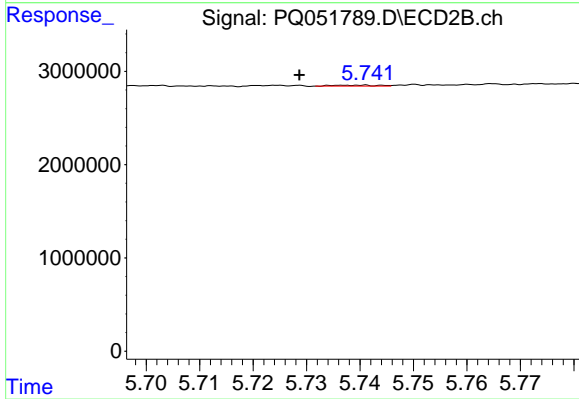
#17 AR-1242-2

R.T.: 5.517 min  
 Delta R.T.: -0.019 min  
 Response: 47713  
 Conc: 0.16 ng/ml



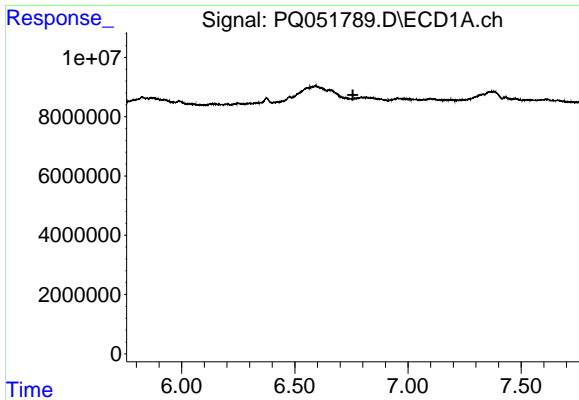
#18 AR-1242-3

R.T.: 6.604 min  
 Delta R.T.: -0.046 min  
 Response: 2538507  
 Conc: 4.13 ng/ml



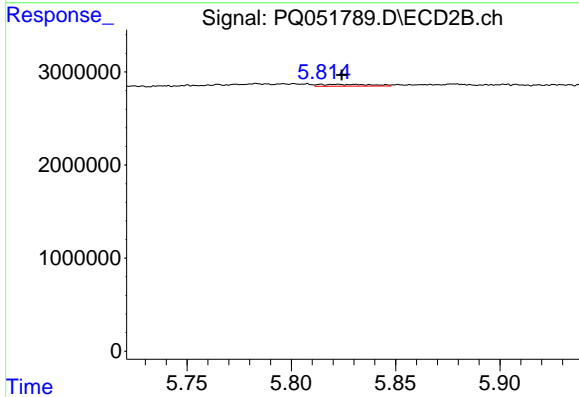
#18 AR-1242-3

R.T.: 5.739 min  
 Delta R.T.: 0.010 min  
 Response: 57914  
 Conc: 0.38 ng/ml



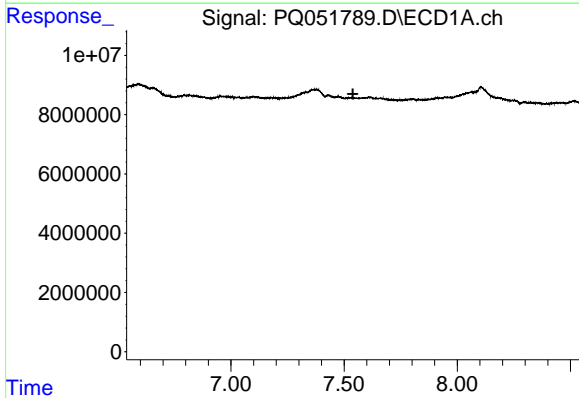
#19 AR-1242-4

R.T.: 0.000 min  
 Exp R.T. : 6.757 min  
 Response: 0  
 Conc: N.D.



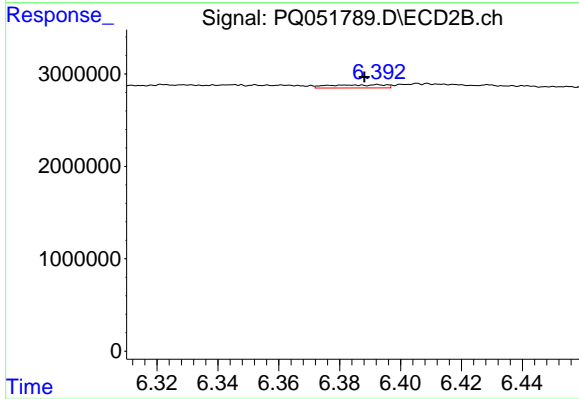
#19 AR-1242-4

R.T.: 5.814 min  
 Delta R.T.: -0.010 min  
 Response: 337450  
 Conc: 2.33 ng/ml



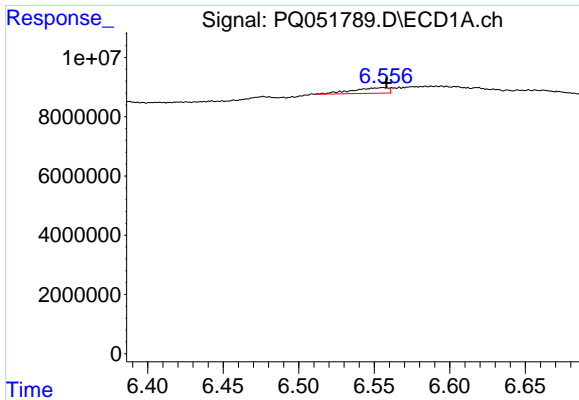
#20 AR-1242-5

R.T.: 0.000 min  
 Exp R.T. : 7.539 min  
 Response: 0  
 Conc: N.D.



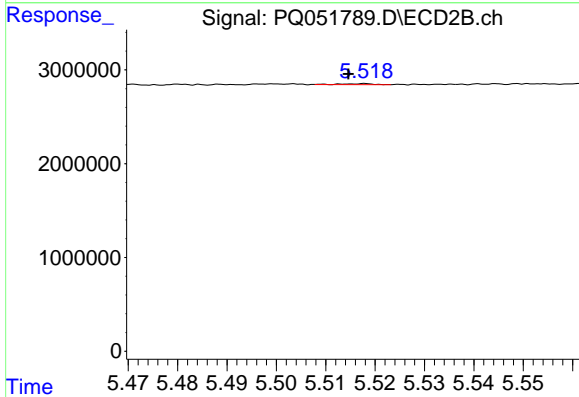
#20 AR-1242-5

R.T.: 6.393 min  
 Delta R.T.: 0.005 min  
 Response: 423135  
 Conc: 2.21 ng/ml



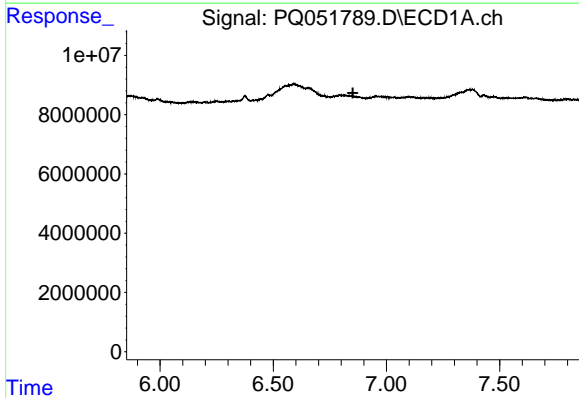
#21 AR-1248-1

R.T.: 6.556 min  
 Delta R.T.: -0.002 min  
 Response: 3057033  
 Conc: 5.40 ng/ml



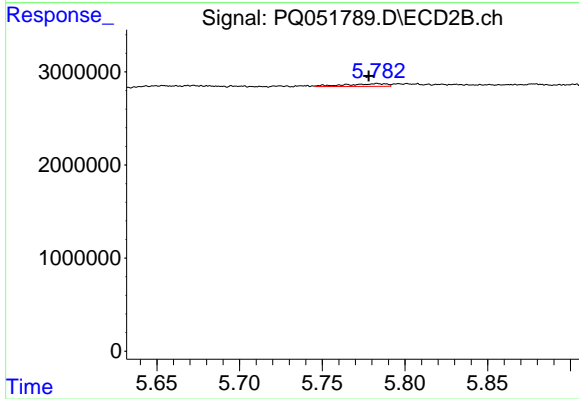
#21 AR-1248-1

R.T.: 5.517 min  
 Delta R.T.: 0.003 min  
 Response: 47713  
 Conc: 0.28 ng/ml



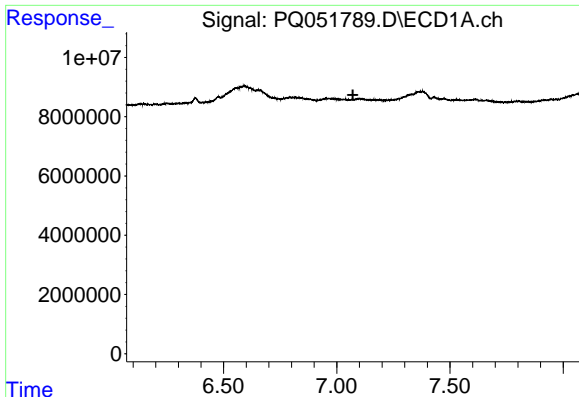
#22 AR-1248-2

R.T.: 0.000 min  
 Exp R.T. : 6.852 min  
 Response: 0  
 Conc: N.D.



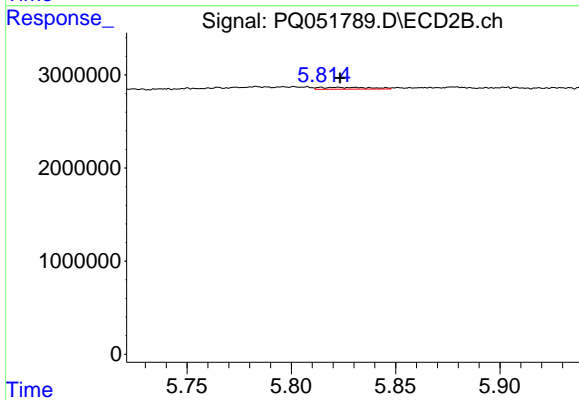
#22 AR-1248-2

R.T.: 5.783 min  
 Delta R.T.: 0.005 min  
 Response: 515745  
 Conc: 2.28 ng/ml



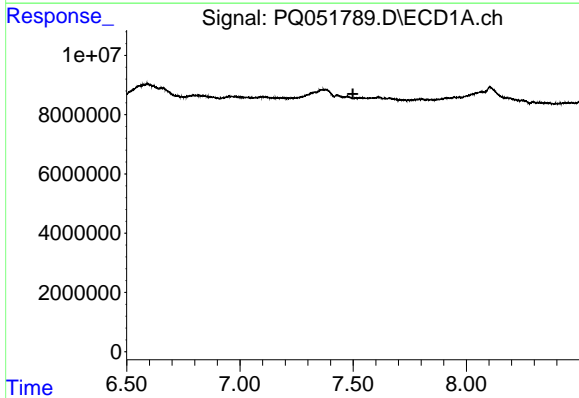
#23 AR-1248-3

R.T.: 0.000 min  
 Exp R.T. : 7.071 min  
 Response: 0  
 Conc: N.D.



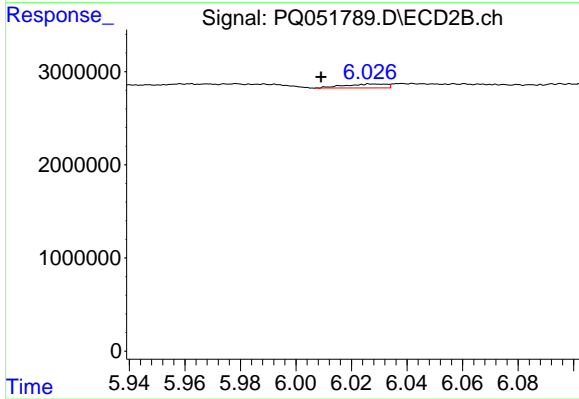
#23 AR-1248-3

R.T.: 5.814 min  
 Delta R.T.: -0.009 min  
 Response: 337450  
 Conc: 1.44 ng/ml



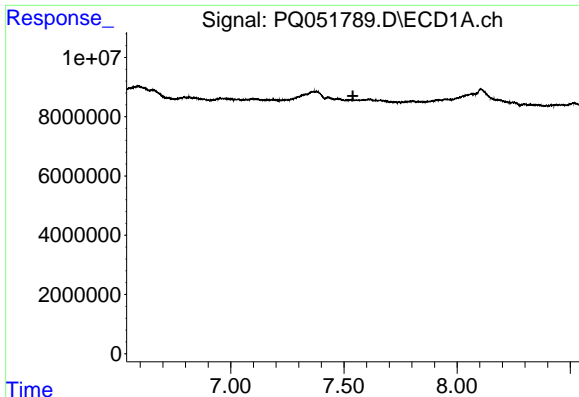
#24 AR-1248-4

R.T.: 0.000 min  
 Exp R.T. : 7.499 min  
 Response: 0  
 Conc: N.D.



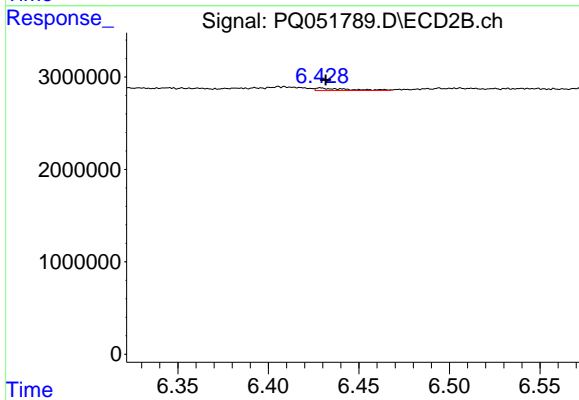
#24 AR-1248-4

R.T.: 6.028 min  
 Delta R.T.: 0.019 min  
 Response: 442330  
 Conc: 1.61 ng/ml



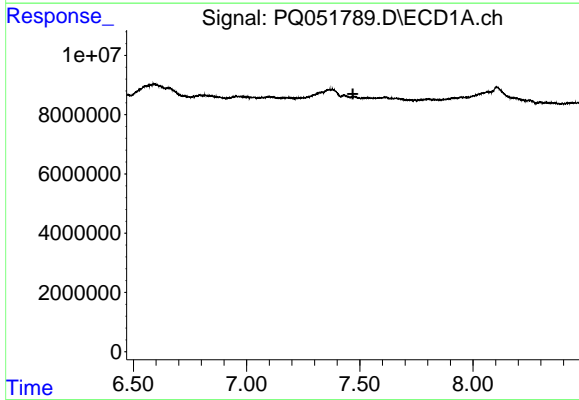
#25 AR-1248-5

R.T.: 0.000 min  
 Exp R.T. : 7.539 min  
 Response: 0  
 Conc: N.D.



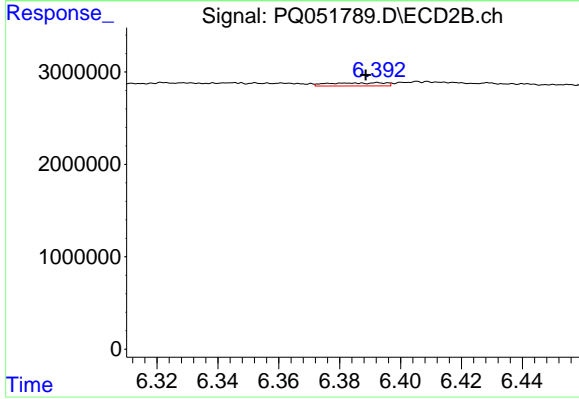
#25 AR-1248-5

R.T.: 6.429 min  
 Delta R.T.: -0.003 min  
 Response: 333954  
 Conc: 1.16 ng/ml



#26 AR-1254-1

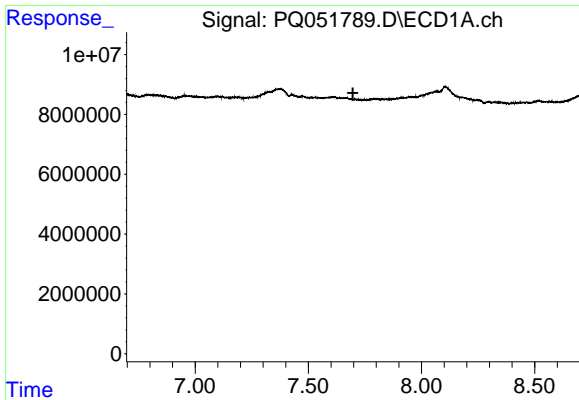
R.T.: 0.000 min  
 Exp R.T. : 7.469 min  
 Response: 0  
 Conc: N.D.



#26 AR-1254-1

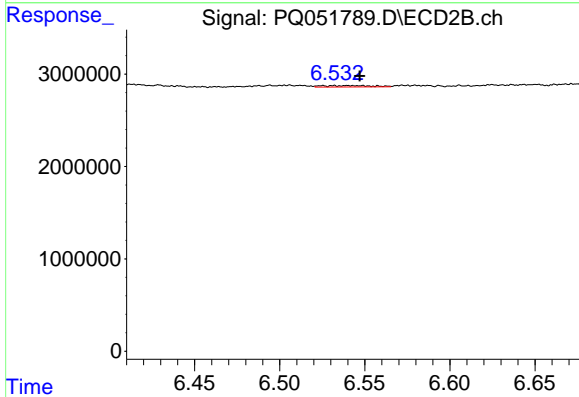
R.T.: 6.393 min  
 Delta R.T.: 0.004 min  
 Response: 423135  
 Conc: 1.00 ng/ml





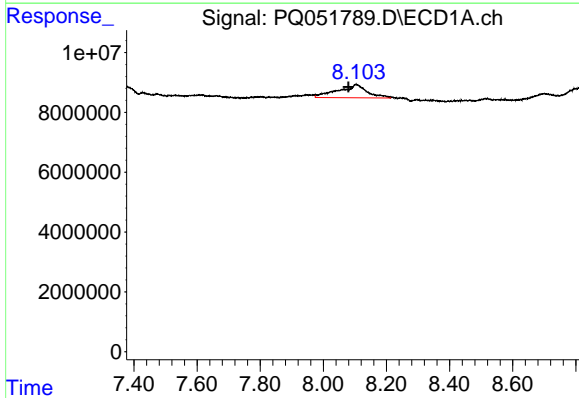
#27 AR-1254-2

R.T.: 0.000 min  
 Exp R.T.: 7.697 min  
 Response: 0  
 Conc: N.D.



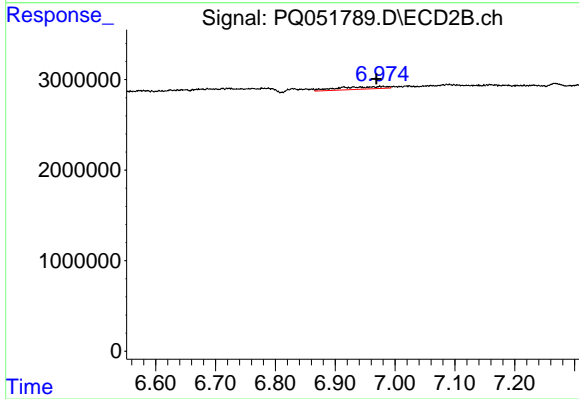
#27 AR-1254-2

R.T.: 6.548 min  
 Delta R.T.: 0.001 min  
 Response: 319494  
 Conc: 0.87 ng/ml



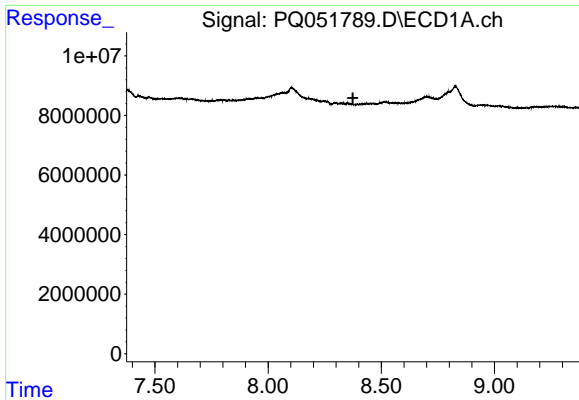
#28 AR-1254-3

R.T.: 8.104 min  
 Delta R.T.: 0.024 min  
 Response: 28088820  
 Conc: 17.00 ng/ml

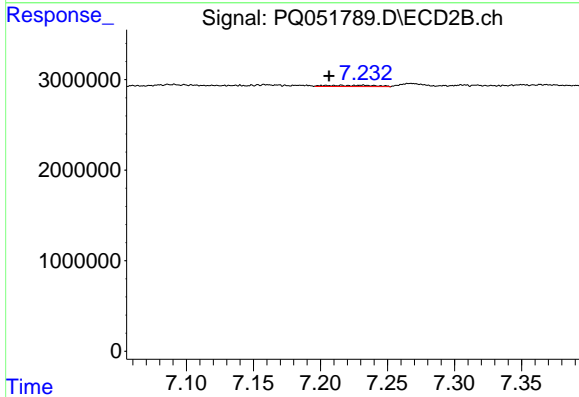


#28 AR-1254-3

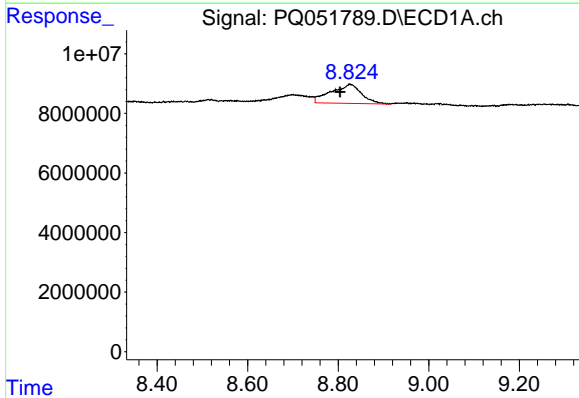
R.T.: 6.979 min  
 Delta R.T.: 0.010 min  
 Response: 1511219  
 Conc: 2.48 ng/ml



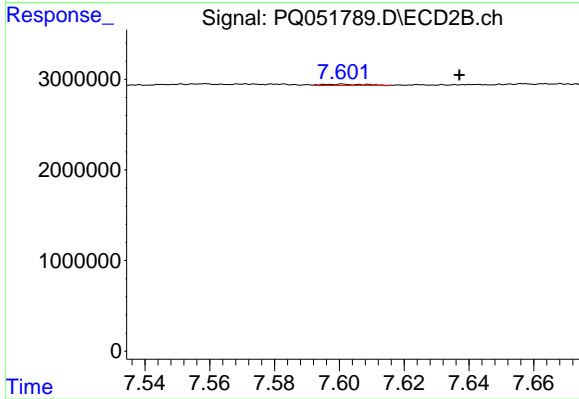
#29 AR-1254-4  
 R.T.: 0.000 min  
 Exp R.T.: 8.374 min  
 Response: 0  
 Conc: N.D.



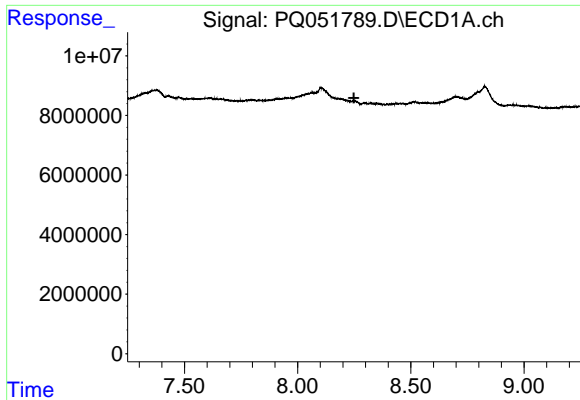
#29 AR-1254-4  
 R.T.: 7.216 min  
 Delta R.T.: 0.009 min  
 Response: 325444  
 Conc: 0.86 ng/ml



#30 AR-1254-5  
 R.T.: 8.825 min  
 Delta R.T.: 0.021 min  
 Response: 29778748  
 Conc: 23.59 ng/ml

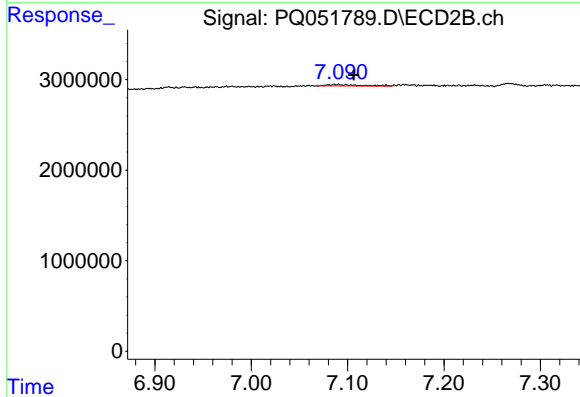


#30 AR-1254-5  
 R.T.: 7.601 min  
 Delta R.T.: -0.036 min  
 Response: 112903  
 Conc: 0.21 ng/ml



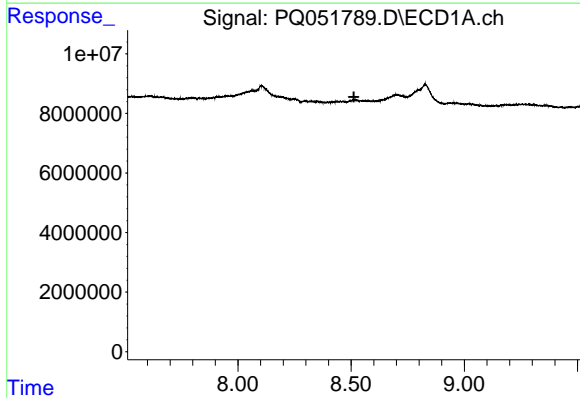
#31 AR-1260-1

R.T.: 0.000 min  
 Exp R.T.: 8.249 min  
 Response: 0  
 Conc: N.D.



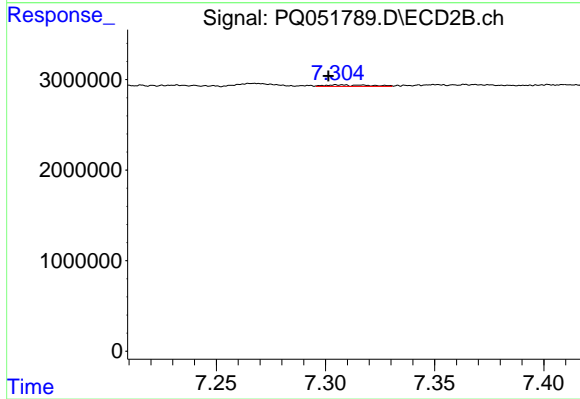
#31 AR-1260-1

R.T.: 7.089 min  
 Delta R.T.: -0.017 min  
 Response: 394757  
 Conc: 1.11 ng/ml



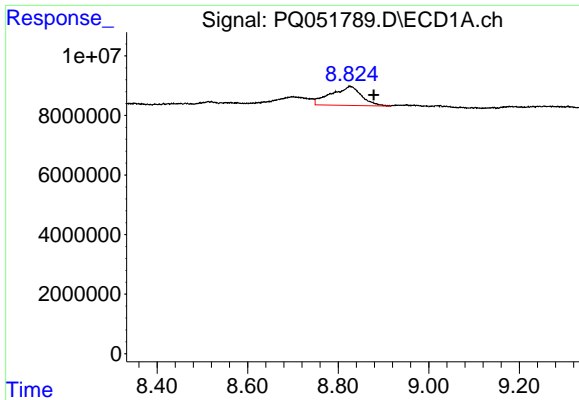
#32 AR-1260-2

R.T.: 0.000 min  
 Exp R.T.: 8.512 min  
 Response: 0  
 Conc: N.D.



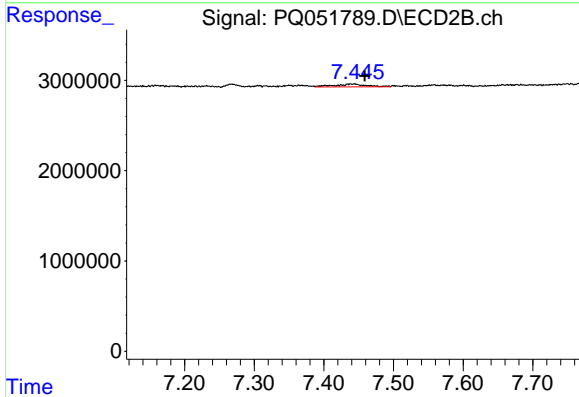
#32 AR-1260-2

R.T.: 7.317 min  
 Delta R.T.: 0.015 min  
 Response: 240791  
 Conc: 0.54 ng/ml



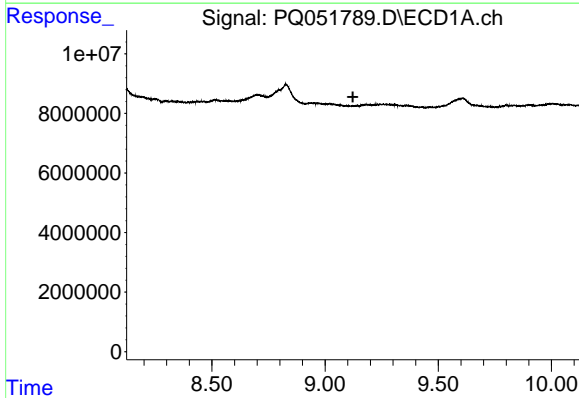
#33 AR-1260-3

R.T.: 8.825 min  
 Delta R.T.: -0.053 min  
 Response: 29778748  
 Conc: 32.79 ng/ml



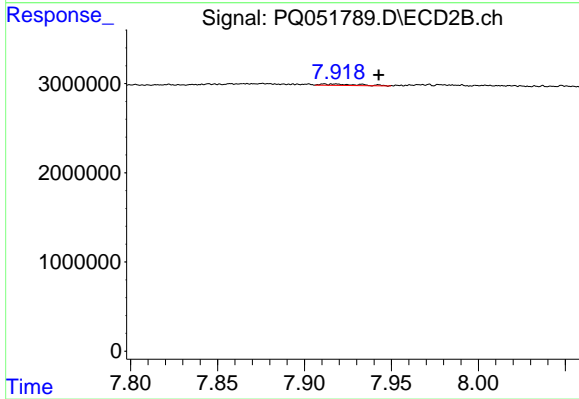
#33 AR-1260-3

R.T.: 7.442 min  
 Delta R.T.: -0.017 min  
 Response: 989025  
 Conc: 2.39 ng/ml



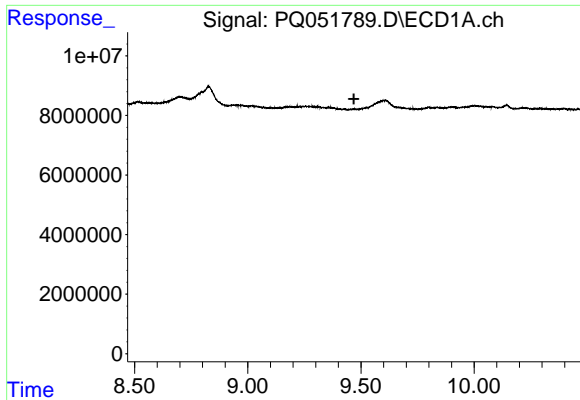
#34 AR-1260-4

R.T.: 0.000 min  
 Exp R.T. : 9.123 min  
 Response: 0  
 Conc: N.D.



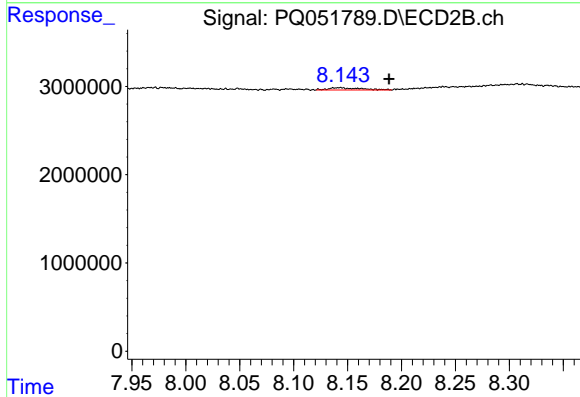
#34 AR-1260-4

R.T.: 7.916 min  
 Delta R.T.: -0.027 min  
 Response: 219888  
 Conc: 0.63 ng/ml



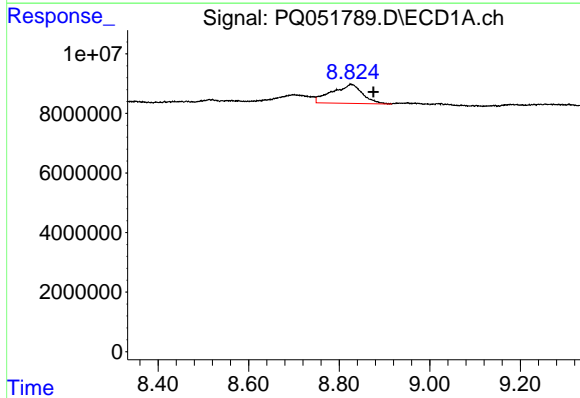
#35 AR-1260-5

R.T.: 0.000 min  
 Exp R.T. : 9.469 min  
 Response: 0  
 Conc: N.D.



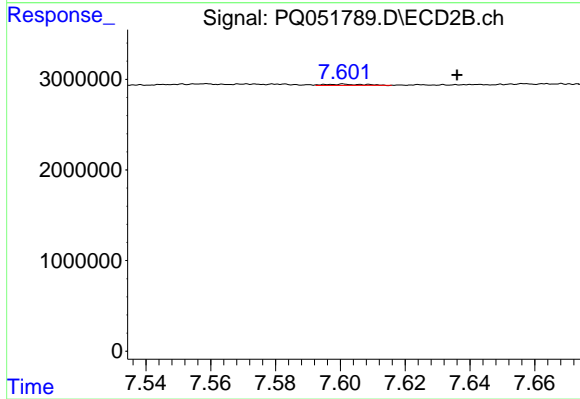
#35 AR-1260-5

R.T.: 8.142 min  
 Delta R.T.: -0.046 min  
 Response: 536738  
 Conc: 0.62 ng/ml



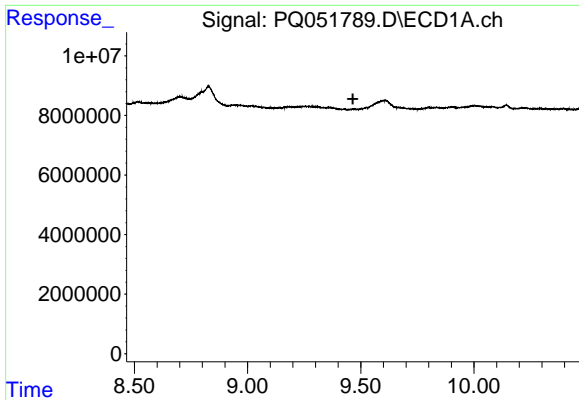
#36 AR-1262-1

R.T.: 8.825 min  
 Delta R.T.: -0.050 min  
 Response: 29778748  
 Conc: 19.63 ng/ml



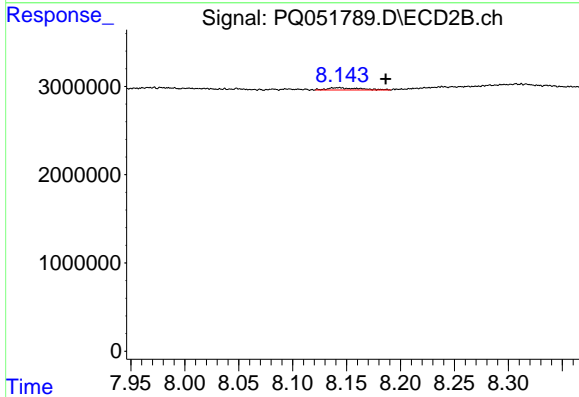
#36 AR-1262-1

R.T.: 7.601 min  
 Delta R.T.: -0.035 min  
 Response: 112903  
 Conc: 0.39 ng/ml



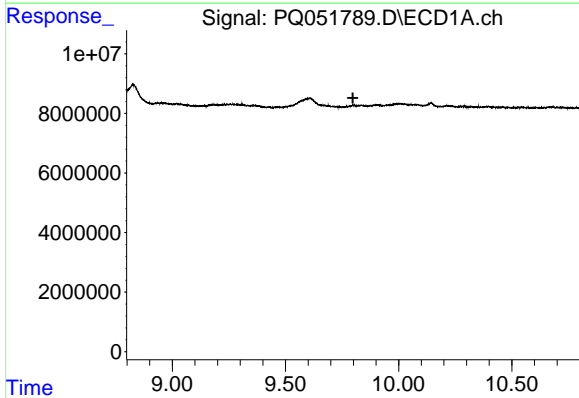
#37 AR-1262-2

R.T.: 0.000 min  
 Exp R.T. : 9.465 min  
 Response: 0  
 Conc: N.D.



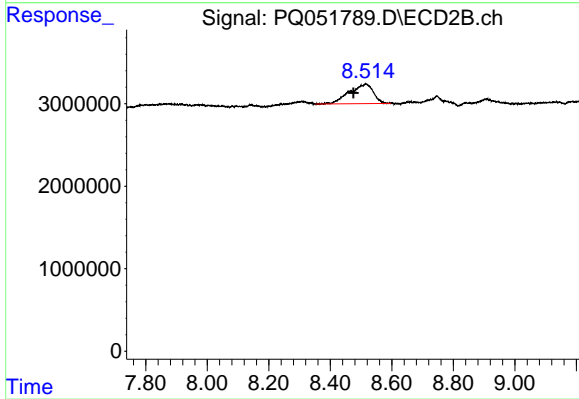
#37 AR-1262-2

R.T.: 8.142 min  
 Delta R.T.: -0.044 min  
 Response: 536738  
 Conc: 0.53 ng/ml



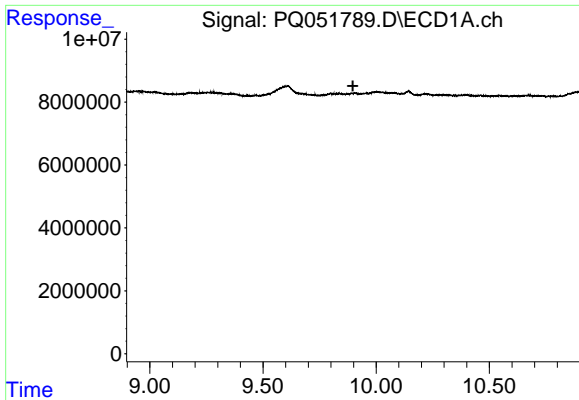
#38 AR-1262-3

R.T.: 0.000 min  
 Exp R.T. : 9.798 min  
 Response: 0  
 Conc: N.D.



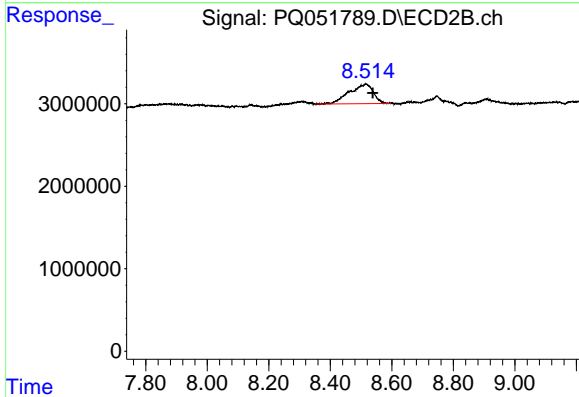
#38 AR-1262-3

R.T.: 8.515 min  
 Delta R.T.: 0.040 min  
 Response: 12857765  
 Conc: 34.17 ng/ml



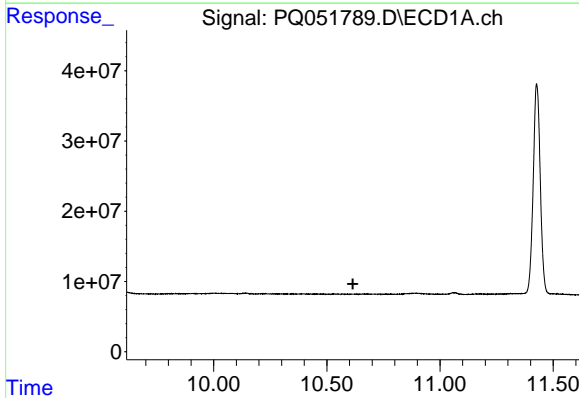
#39 AR-1262-4

R.T.: 0.000 min  
 Exp R.T. : 9.897 min  
 Response: 0  
 Conc: N.D.



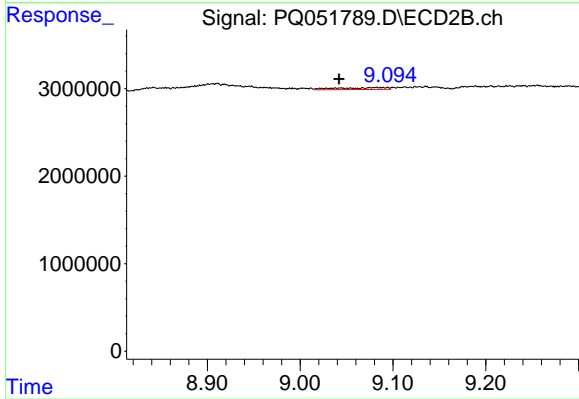
#39 AR-1262-4

R.T.: 8.515 min  
 Delta R.T.: -0.023 min  
 Response: 12857765  
 Conc: 17.53 ng/ml



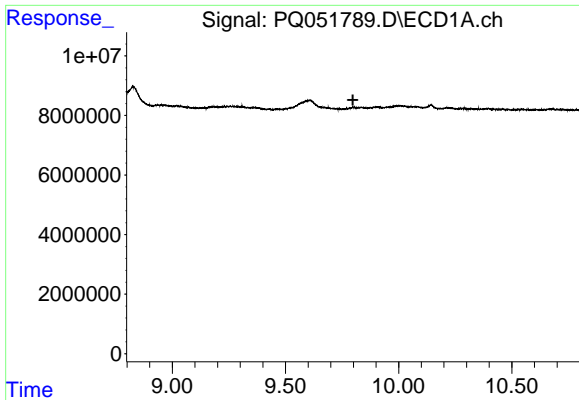
#40 AR-1262-5

R.T.: 0.000 min  
 Exp R.T. : 10.615 min  
 Response: 0  
 Conc: N.D.



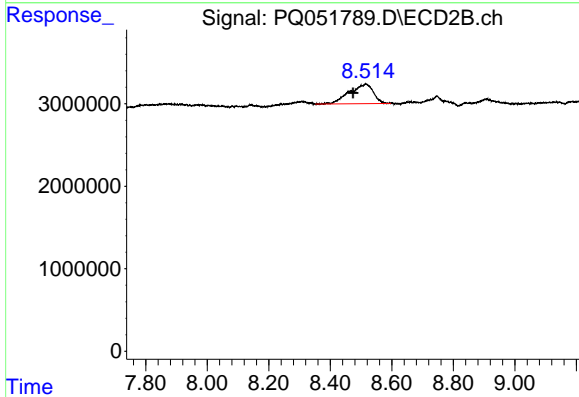
#40 AR-1262-5

R.T.: 9.083 min  
 Delta R.T.: 0.041 min  
 Response: 798957  
 Conc: 2.43 ng/ml



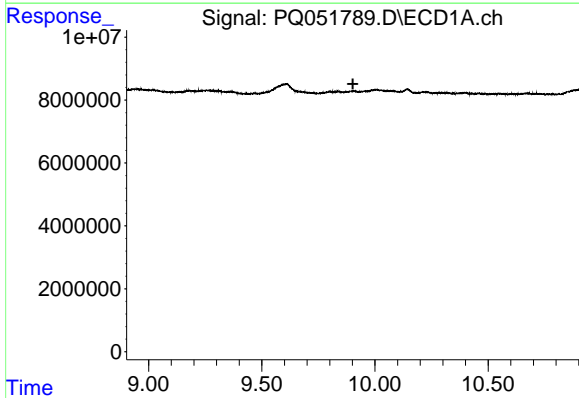
#41 AR-1268-1

R.T.: 0.000 min  
 Exp R.T. : 9.798 min  
 Response: 0  
 Conc: N.D.



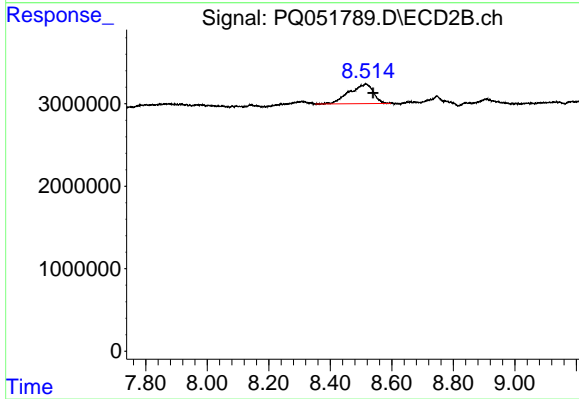
#41 AR-1268-1

R.T.: 8.515 min  
 Delta R.T.: 0.041 min  
 Response: 12857765  
 Conc: 11.07 ng/ml



#42 AR-1268-2

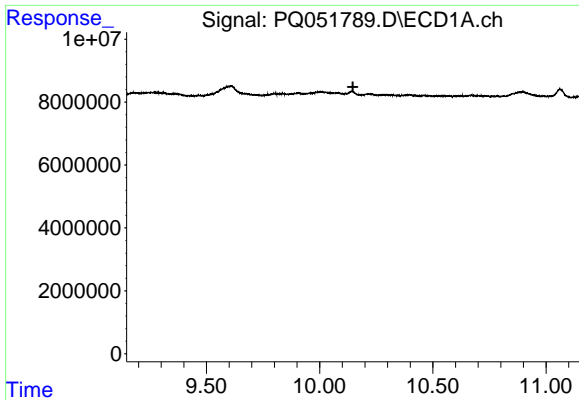
R.T.: 0.000 min  
 Exp R.T. : 9.902 min  
 Response: 0  
 Conc: N.D.



#42 AR-1268-2

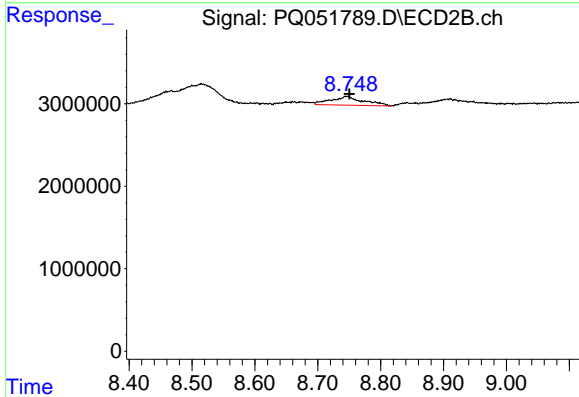
R.T.: 8.515 min  
 Delta R.T.: -0.024 min  
 Response: 12857765  
 Conc: 12.08 ng/ml





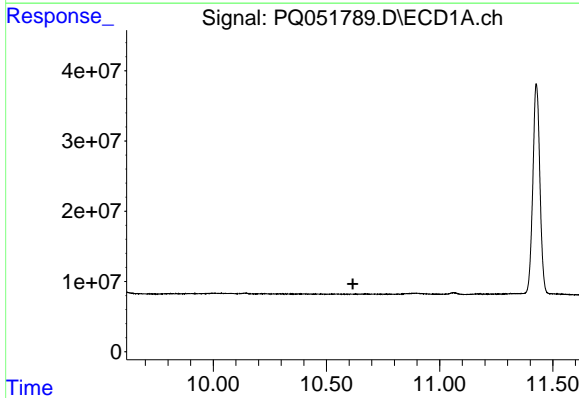
#43 AR-1268-3

R.T.: 0.000 min  
 Exp R.T. : 10.147 min  
 Response: 0  
 Conc: N.D.



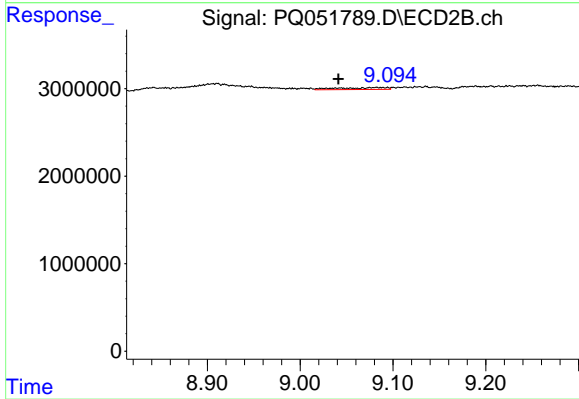
#43 AR-1268-3

R.T.: 8.747 min  
 Delta R.T.: -0.004 min  
 Response: 3832863  
 Conc: 4.30 ng/ml



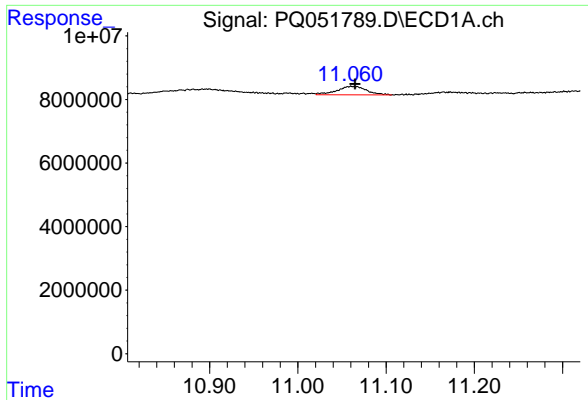
#44 AR-1268-4

R.T.: 0.000 min  
 Exp R.T. : 10.617 min  
 Response: 0  
 Conc: N.D.



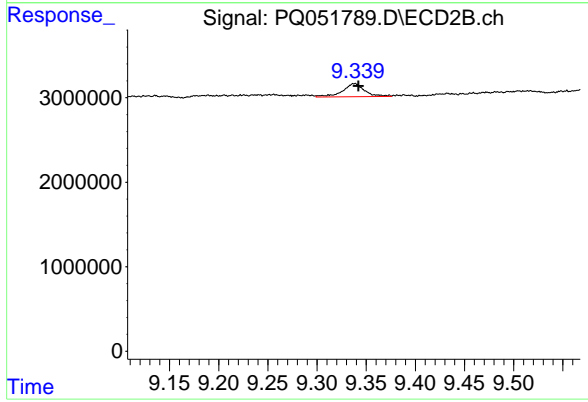
#44 AR-1268-4

R.T.: 9.083 min  
 Delta R.T.: 0.042 min  
 Response: 798957  
 Conc: 2.17 ng/ml



#45 AR-1268-5

R.T.: 11.061 min  
Delta R.T.: -0.004 min  
Response: 6254408  
Conc: 0.75 ng/ml



#45 AR-1268-5

R.T.: 9.338 min  
Delta R.T.: -0.004 min  
Response: 2403583  
Conc: 0.86 ng/ml