

Data Path : Z:\pestpcbsrv\HPCHEM1\ECD\_Q\Data\PQ011922\  
 Data File : PQ055798.D  
 Signal(s) : Signal #1: ECD1A.ch Signal #2: ECD2B.ch  
 Acq On : 19 Jan 2022 19:33  
 Operator : AJ\MA  
 Sample : AR1248ICC750  
 Misc :  
 ALS Vial : 16 Sample Multiplier: 1

Instrument :  
 ECD\_Q  
 ClientSampleId :

Integration File signal 1: autoint1.e  
 Integration File signal 2: autoint2.e  
 Quant Time: Jan 20 12:51:04 2022  
 Quant Method : Z:\pestpcbsrv\HPCHEM1\ECD\_Q\Method\PQ011922.M  
 Quant Title : GC EXTRACTABLES  
 QLast Update : Thu Jan 20 12:49:39 2022  
 Response via : Initial Calibration  
 Integrator: ChemStation

Volume Inj. : 2 µl  
 Signal #1 Phase : ZB-MR1 Signal #2 Phase: ZB-MR2  
 Signal #1 Info : 30Mx0.32mmx 0.50µ Signal #2 Info : 30M x 0.32mm x 0.25µm

Compound	RT#1	RT#2	Resp#1	Resp#2	ng/ml	ng/ml
-----						
System Monitoring Compounds						
1) SA Tetrachlo...	5.237	4.296	991.2E6	853.9E6	73.070	74.750
2) SA Decachlor...	11.421	9.665	1058.3E6	601.2E6	71.246	73.849
Target Compounds						
21) L5 AR-1248-1	6.564	5.566	145.8E6	131.4E6	724.611	767.119
22) L5 AR-1248-2	6.855	5.825	220.7E6	229.8E6	710.140	730.898
23) L5 AR-1248-3	7.074	5.872	267.8E6	237.0E6	719.822	732.154
24) L5 AR-1248-4	7.504	6.058	299.6E6	277.4E6	722.744	737.745
25) L5 AR-1248-5	7.546	6.486	323.4E6	360.8E6	718.027	941.986 #
-----						

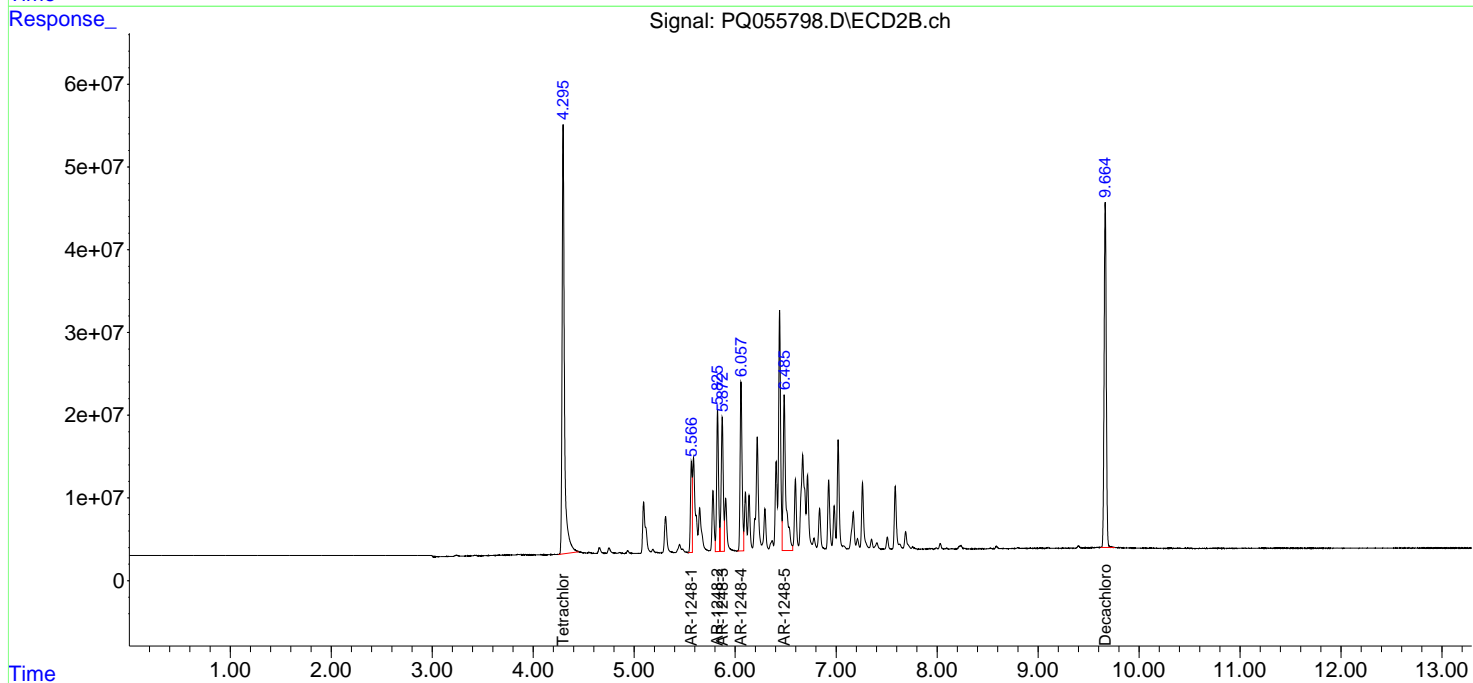
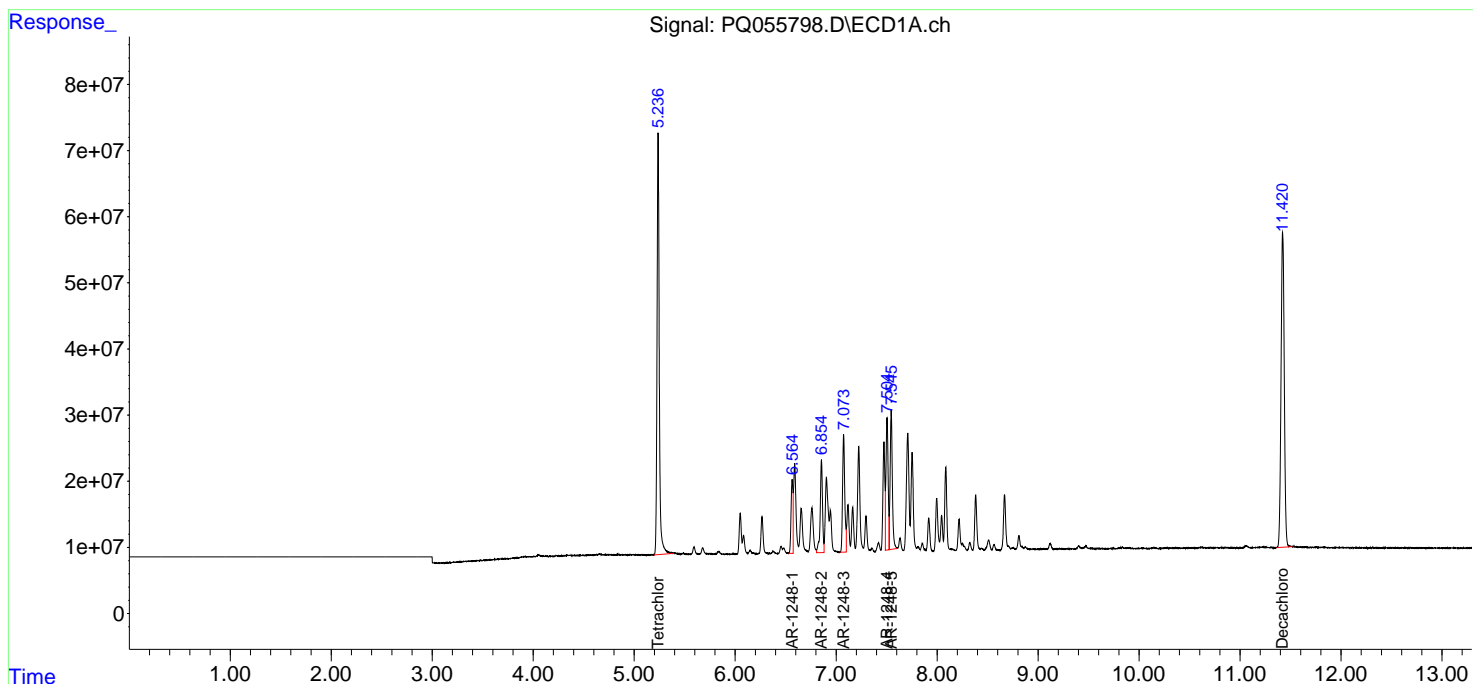
(f)=RT Delta > 1/2 Window (#)=Amounts differ by > 25% (m)=manual int.

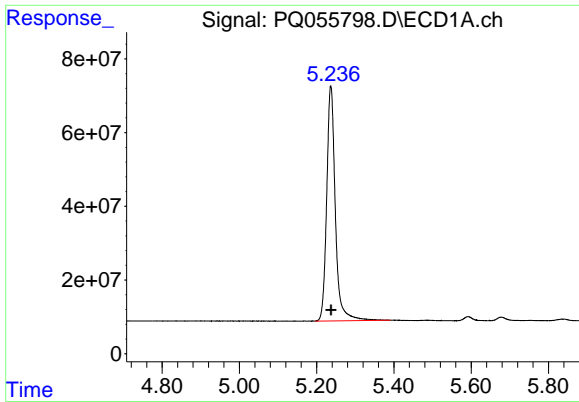
Data Path : Z:\pestpcbsrv\HPCHEM1\ECD\_Q\Data\PQ011922\  
 Data File : PQ055798.D  
 Signal(s) : Signal #1: ECD1A.ch Signal #2: ECD2B.ch  
 Acq On : 19 Jan 2022 19:33  
 Operator : AJ\MA  
 Sample : AR1248ICC750  
 Misc :  
 ALS Vial : 16 Sample Multiplier: 1

Instrument :  
 ECD\_Q  
 ClientSampleId :

Integration File signal 1: autoint1.e  
 Integration File signal 2: autoint2.e  
 Quant Time: Jan 20 12:51:04 2022  
 Quant Method : Z:\pestpcbsrv\HPCHEM1\ECD\_Q\Method\PQ011922.M  
 Quant Title : GC EXTRACTABLES  
 QLast Update : Thu Jan 20 12:49:39 2022  
 Response via : Initial Calibration  
 Integrator: ChemStation

Volume Inj. : 2 µl  
 Signal #1 Phase : ZB-MR1 Signal #2 Phase: ZB-MR2  
 Signal #1 Info : 30Mx0.32mmx 0.50µm Signal #2 Info : 30M x 0.32mm x 0.25µm

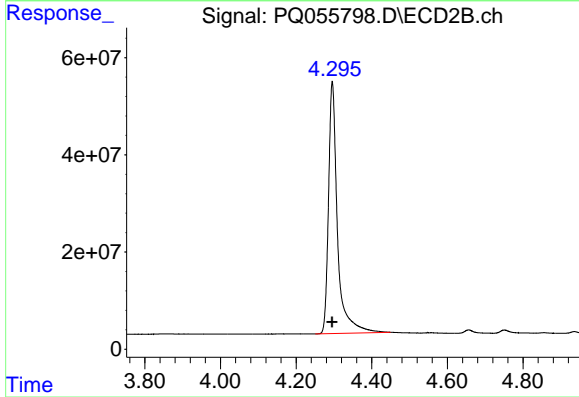




#1 Tetrachloro-m-xylene

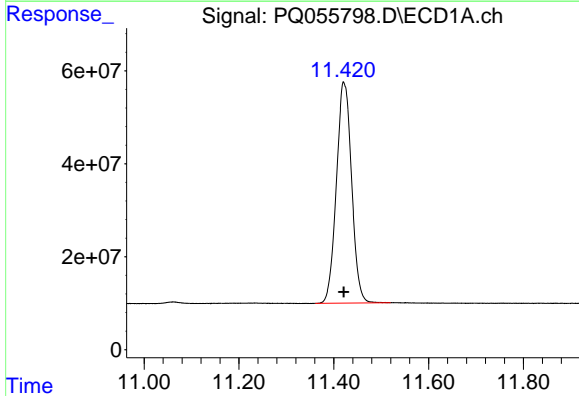
R.T.: 5.237 min  
 Delta R.T.: 0.000 min  
 Response: 991164522  
 Conc: 73.07 ng/ml

Instrument :  
 ECD\_Q  
 ClientSampleId :



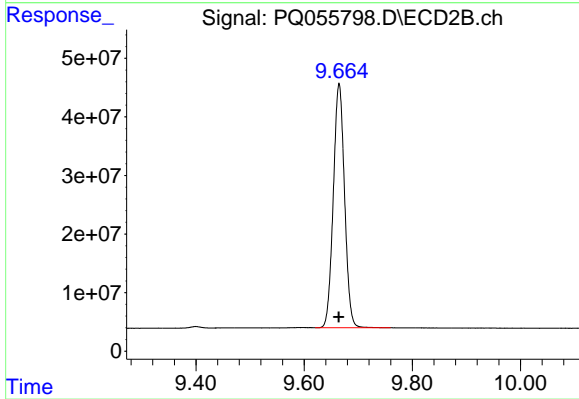
#1 Tetrachloro-m-xylene

R.T.: 4.296 min  
 Delta R.T.: 0.000 min  
 Response: 853897826  
 Conc: 74.75 ng/ml



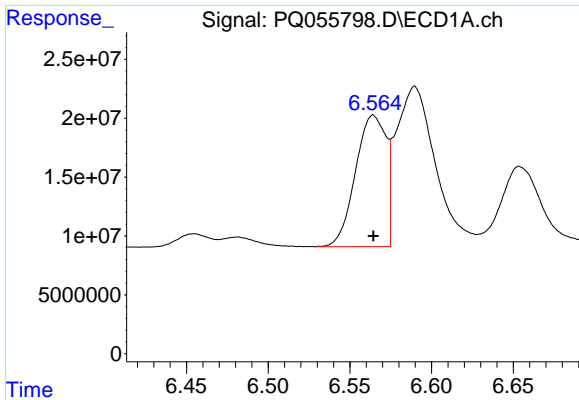
#2 Decachlorobiphenyl

R.T.: 11.421 min  
 Delta R.T.: 0.000 min  
 Response: 1058267147  
 Conc: 71.25 ng/ml



#2 Decachlorobiphenyl

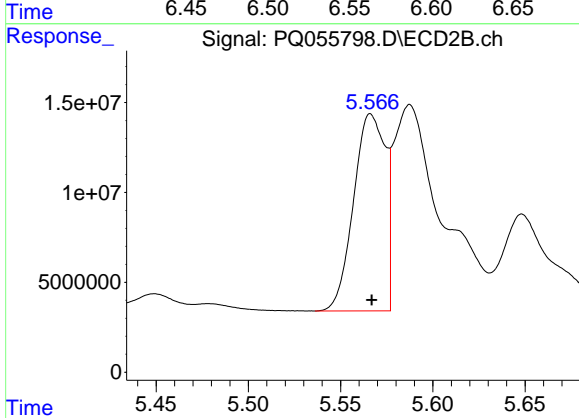
R.T.: 9.665 min  
 Delta R.T.: 0.000 min  
 Response: 601243271  
 Conc: 73.85 ng/ml



#21 AR-1248-1

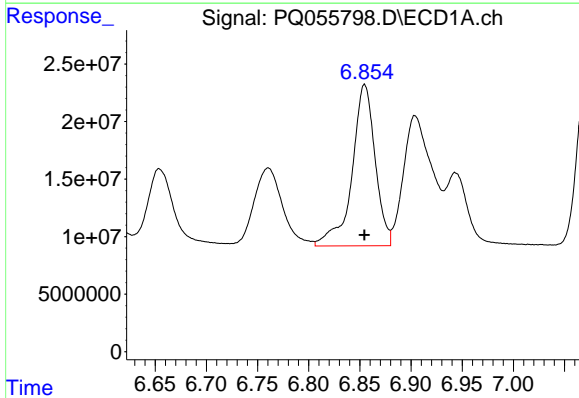
R.T.: 6.564 min  
 Delta R.T.: 0.000 min  
 Response: 145777381  
 Conc: 724.61 ng/ml

Instrument :  
 ECD\_Q  
 ClientSampleId :



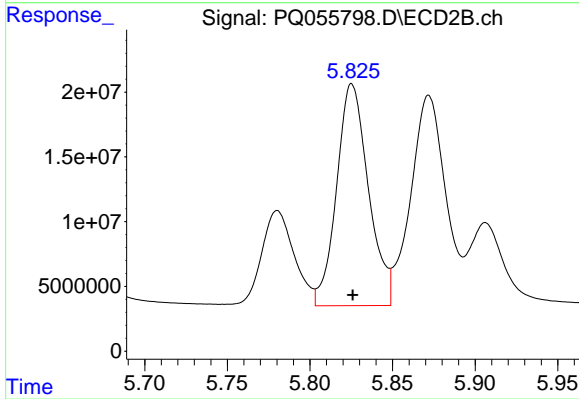
#21 AR-1248-1

R.T.: 5.566 min  
 Delta R.T.: 0.000 min  
 Response: 131423049  
 Conc: 767.12 ng/ml



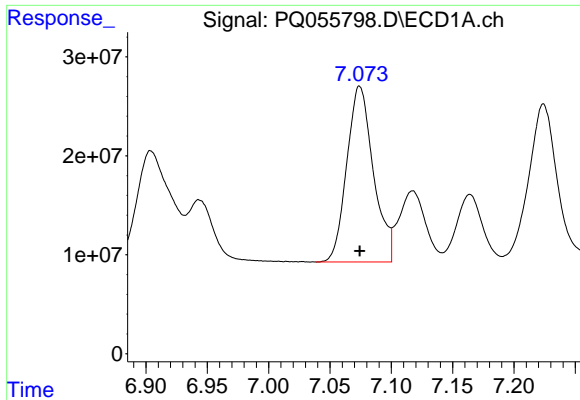
#22 AR-1248-2

R.T.: 6.855 min  
 Delta R.T.: 0.000 min  
 Response: 220684192  
 Conc: 710.14 ng/ml



#22 AR-1248-2

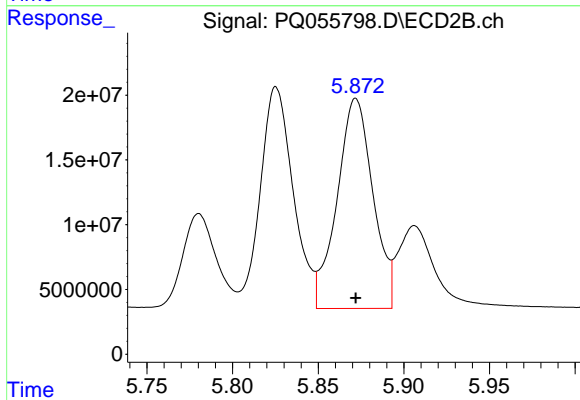
R.T.: 5.825 min  
 Delta R.T.: 0.000 min  
 Response: 229757581  
 Conc: 730.90 ng/ml



#23 AR-1248-3

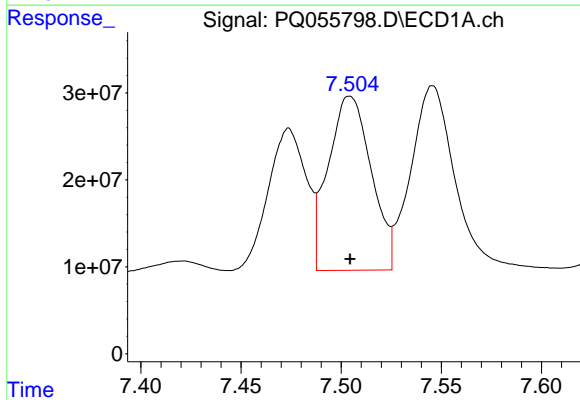
R.T.: 7.074 min  
 Delta R.T.: 0.000 min  
 Response: 267754748  
 Conc: 719.82 ng/ml

Instrument :  
 ECD\_Q  
 ClientSampleId :



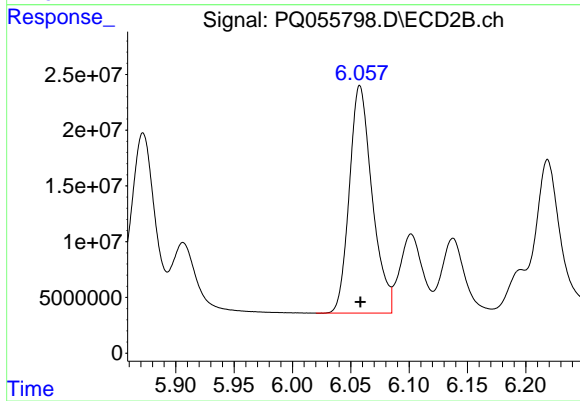
#23 AR-1248-3

R.T.: 5.872 min  
 Delta R.T.: 0.000 min  
 Response: 236990226  
 Conc: 732.15 ng/ml



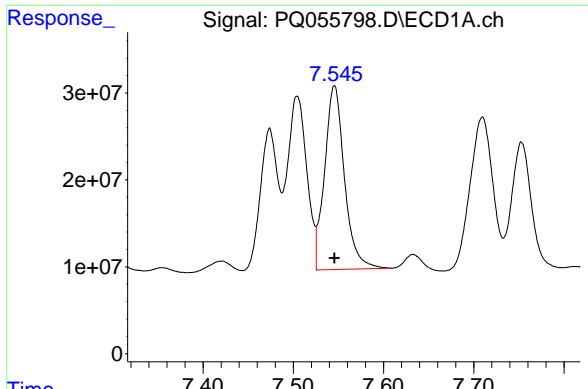
#24 AR-1248-4

R.T.: 7.504 min  
 Delta R.T.: 0.000 min  
 Response: 299568238  
 Conc: 722.74 ng/ml



#24 AR-1248-4

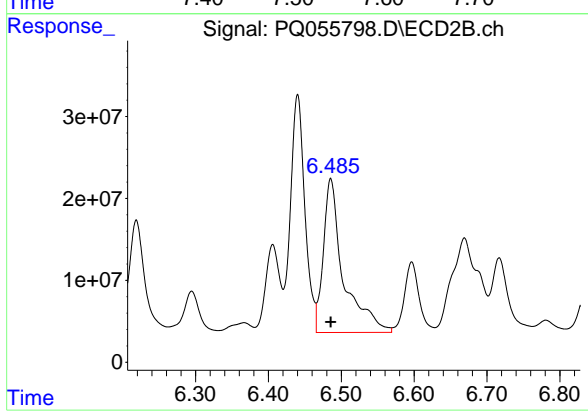
R.T.: 6.058 min  
 Delta R.T.: 0.000 min  
 Response: 277350139  
 Conc: 737.74 ng/ml



#25 AR-1248-5

R.T.: 7.546 min  
Delta R.T.: 0.000 min  
Response: 323359745  
Conc: 718.03 ng/ml

Instrument :  
ECD\_Q  
ClientSampleId :



#25 AR-1248-5

R.T.: 6.486 min  
Delta R.T.: 0.000 min  
Response: 360752202  
Conc: 941.99 ng/ml