

Data Path : Z:\pestpcbsrv\HPCHEM1\ECD_Q\Data\PQ011922\
 Data File : PQ055802.D
 Signal(s) : Signal #1: ECD1A.ch Signal #2: ECD2B.ch
 Acq On : 19 Jan 2022 20:38
 Operator : AJ\MA
 Sample : AR1254ICC1000
 Misc :
 ALS Vial : 20 Sample Multiplier: 1

Instrument :
 ECD_Q
 ClientSampleId :
 AR1254ICC1000

Integration File signal 1: autoint1.e
 Integration File signal 2: autoint2.e
 Quant Time: Jan 20 06:18:55 2022
 Quant Method : Z:\pestpcbsrv\HPCHEM1\ECD_Q\Method\PQ011922.M
 Quant Title : GC EXTRACTABLES
 QLast Update : Thu Jan 20 06:18:14 2022
 Response via : Initial Calibration
 Integrator: ChemStation

Volume Inj. : 2 µl
 Signal #1 Phase : ZB-MR2 Signal #2 Phase: ZB-MR2
 Signal #1 Info : 30Mx0.32mmx 0.50µ Signal #2 Info : 30M x 0.32mm x 0.25µm

Compound	RT#1	RT#2	Resp#1	Resp#2	ng/ml	ng/ml

System Monitoring Compounds						
1) SA Tetrachlo...	5.237	4.295	1313.2E6	1146.2E6	93.496	96.297
2) SA Decachlor...	11.424	9.664	1391.5E6	806.2E6	93.214	96.623
Target Compounds						
26) L6 AR-1254-1	7.473	6.438	361.9E6	586.6E6	916.039	957.720
27) L6 AR-1254-2	7.702	6.596	576.4E6	507.0E6	921.752	951.967
28) L6 AR-1254-3	8.086	7.020	713.9E6	833.2E6	938.985	972.493
29) L6 AR-1254-4	8.384	7.261	514.0E6	596.9E6	932.848	969.592
30) L6 AR-1254-5	8.812	7.688	580.2E6	724.6E6	930.382	971.425

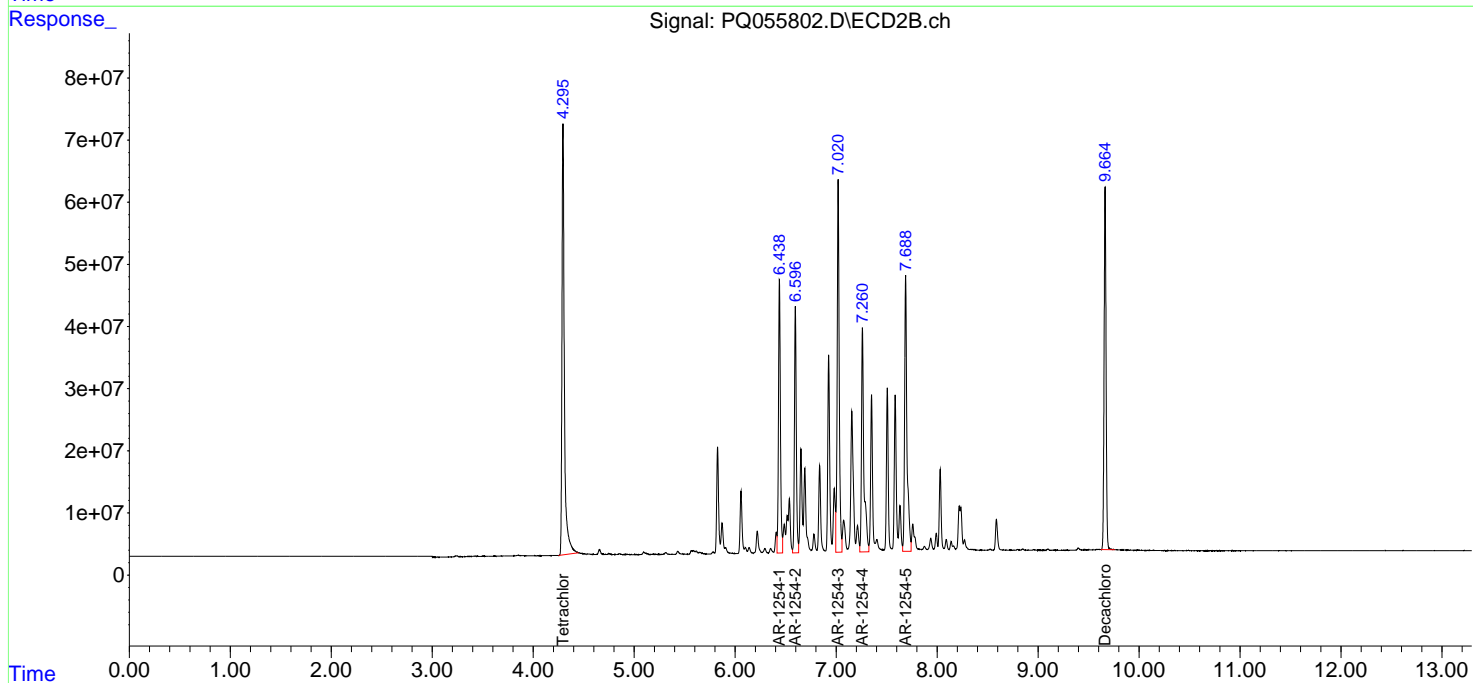
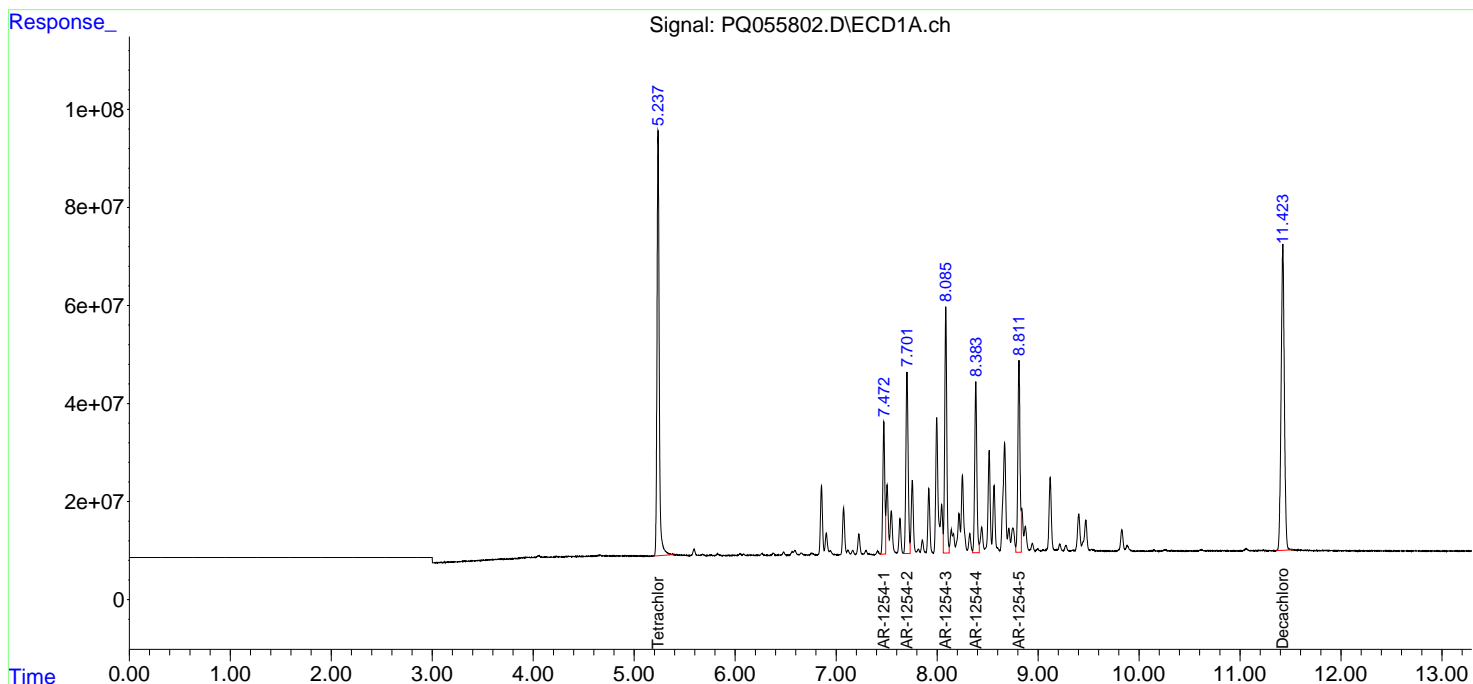
(f)=RT Delta > 1/2 Window (#)=Amounts differ by > 25% (m)=manual int.

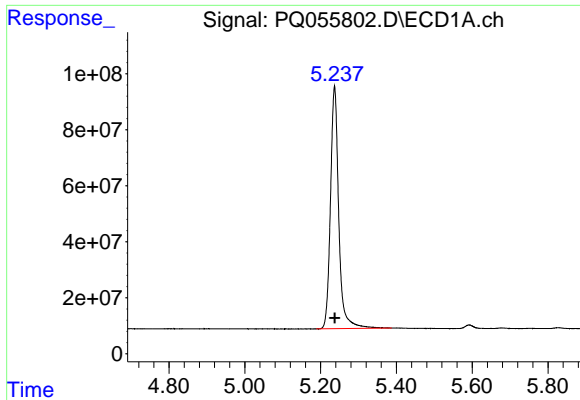
Data Path : Z:\pestpcbsrv\HPCHEM1\ECD_Q\Data\PQ011922\
 Data File : PQ055802.D
 Signal(s) : Signal #1: ECD1A.ch Signal #2: ECD2B.ch
 Acq On : 19 Jan 2022 20:38
 Operator : AJ\MA
 Sample : AR1254ICC1000
 Misc :
 ALS Vial : 20 Sample Multiplier: 1

Instrument :
 ECD_Q
 ClientSampleId :
 AR1254ICC1000

Integration File signal 1: autoint1.e
 Integration File signal 2: autoint2.e
 Quant Time: Jan 20 06:18:55 2022
 Quant Method : Z:\pestpcbsrv\HPCHEM1\ECD_Q\Method\PQ011922.M
 Quant Title : GC EXTRACTABLES
 QLast Update : Thu Jan 20 06:18:14 2022
 Response via : Initial Calibration
 Integrator: ChemStation

Volume Inj. : 2 µl
 Signal #1 Phase : ZB-MR1 Signal #2 Phase: ZB-MR2
 Signal #1 Info : 30Mx0.32mmx 0.50µm Signal #2 Info : 30M x 0.32mm x 0.25µm

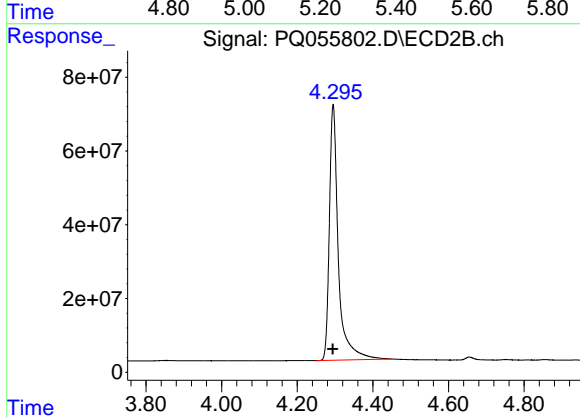




#1 Tetrachloro-m-xylene

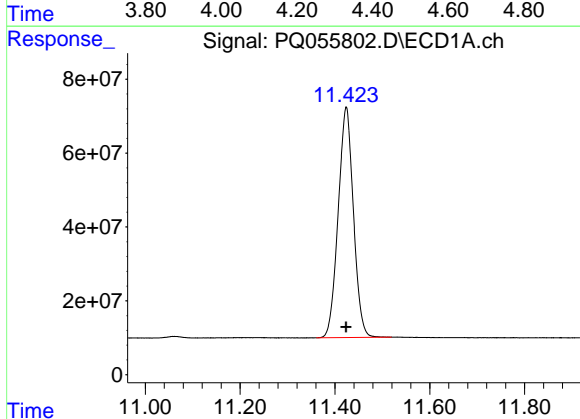
R.T.: 5.237 min
 Delta R.T.: 0.000 min
 Response: 1313242871
 Conc: 93.50 ng/ml

Instrument :
 ECD_Q
 ClientSampleId :
 AR1254ICC1000



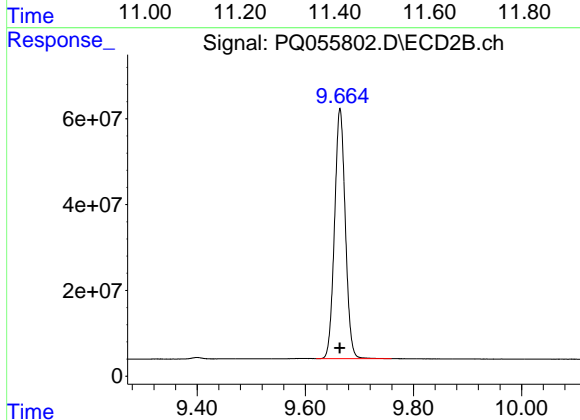
#1 Tetrachloro-m-xylene

R.T.: 4.295 min
 Delta R.T.: 0.000 min
 Response: 1146218156
 Conc: 96.30 ng/ml



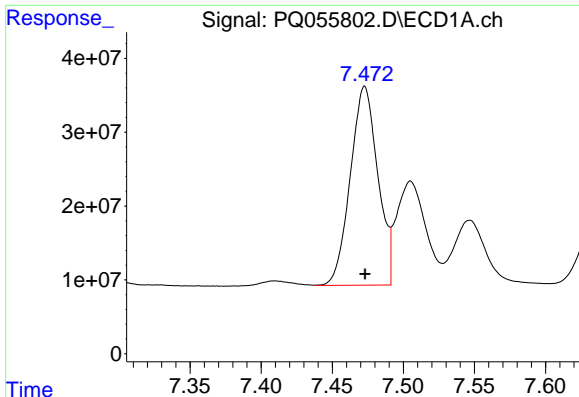
#2 Decachlorobiphenyl

R.T.: 11.424 min
 Delta R.T.: 0.000 min
 Response: 1391512114
 Conc: 93.21 ng/ml



#2 Decachlorobiphenyl

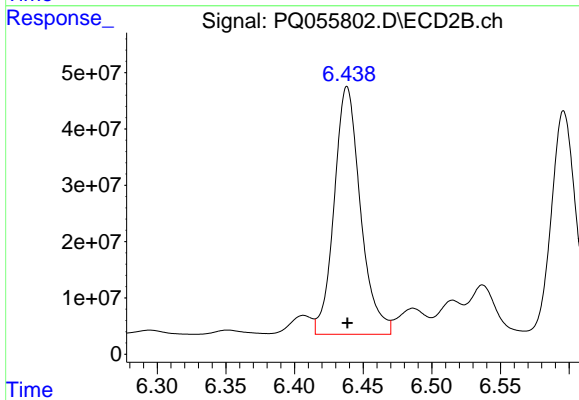
R.T.: 9.664 min
 Delta R.T.: 0.000 min
 Response: 806173288
 Conc: 96.62 ng/ml



#26 AR-1254-1

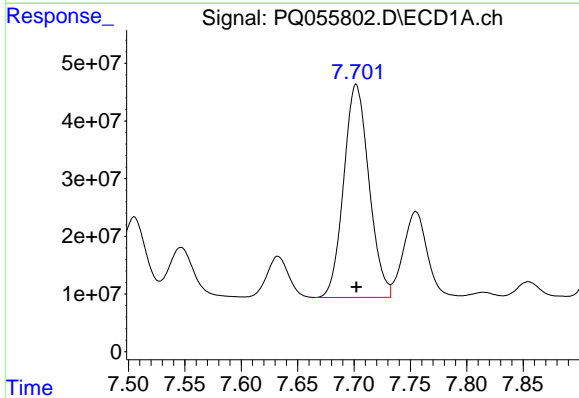
R.T.: 7.473 min
 Delta R.T.: 0.000 min
 Response: 361945731
 Conc: 916.04 ng/ml

Instrument :
 ECD_Q
 ClientSampleId :
 AR1254ICC1000



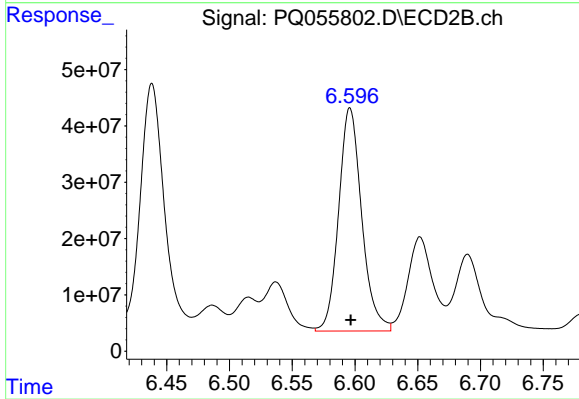
#26 AR-1254-1

R.T.: 6.438 min
 Delta R.T.: 0.000 min
 Response: 586603051
 Conc: 957.72 ng/ml



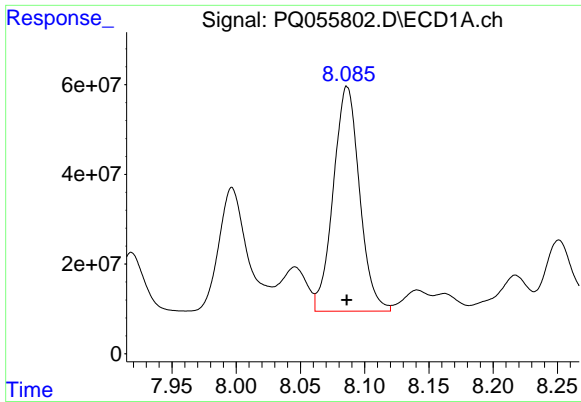
#27 AR-1254-2

R.T.: 7.702 min
 Delta R.T.: 0.000 min
 Response: 576416417
 Conc: 921.75 ng/ml



#27 AR-1254-2

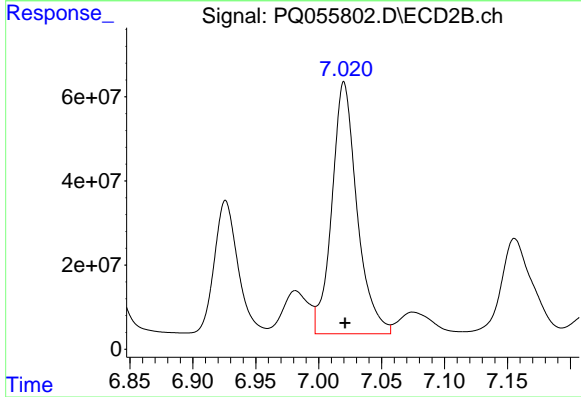
R.T.: 6.596 min
 Delta R.T.: 0.000 min
 Response: 506987158
 Conc: 951.97 ng/ml



#28 AR-1254-3

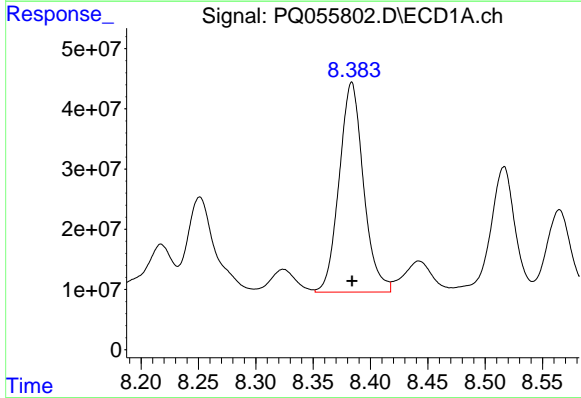
R.T.: 8.086 min
 Delta R.T.: 0.000 min
 Response: 713919087
 Conc: 938.99 ng/ml

Instrument :
 ECD_Q
 ClientSampleId :
 AR1254ICC1000



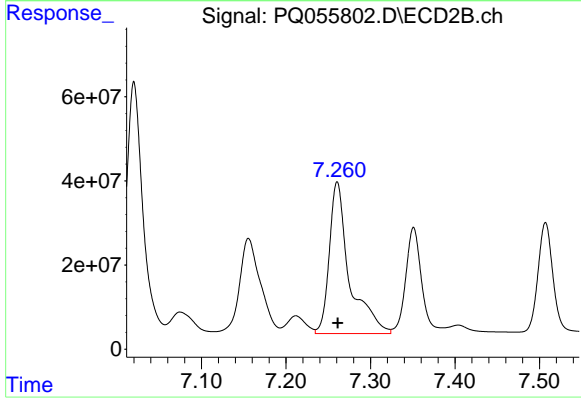
#28 AR-1254-3

R.T.: 7.020 min
 Delta R.T.: 0.000 min
 Response: 833211751
 Conc: 972.49 ng/ml



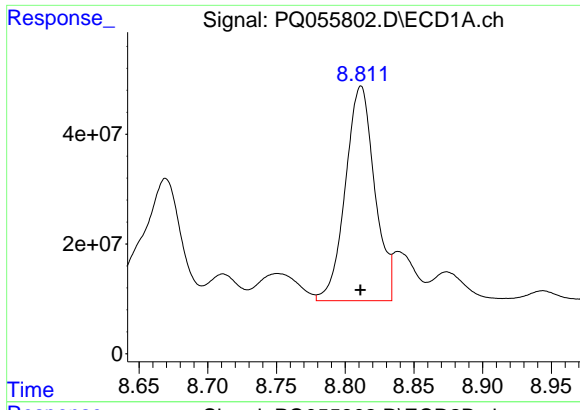
#29 AR-1254-4

R.T.: 8.384 min
 Delta R.T.: 0.000 min
 Response: 514041218
 Conc: 932.85 ng/ml



#29 AR-1254-4

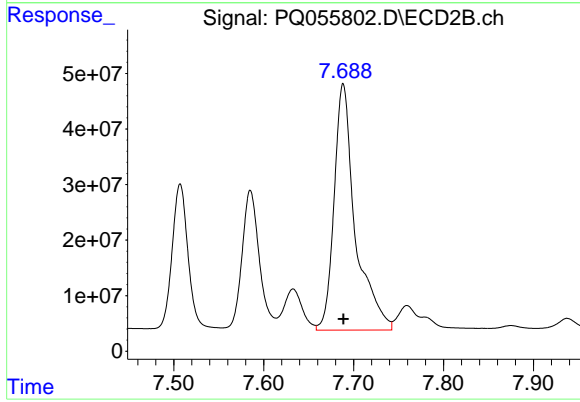
R.T.: 7.261 min
 Delta R.T.: 0.000 min
 Response: 596909972
 Conc: 969.59 ng/ml



#30 AR-1254-5

R.T.: 8.812 min
Delta R.T.: 0.000 min
Response: 580188613
Conc: 930.38 ng/ml

Instrument :
ECD_Q
ClientSampleId :
AR1254ICC1000



#30 AR-1254-5

R.T.: 7.688 min
Delta R.T.: 0.000 min
Response: 724627368
Conc: 971.42 ng/ml