

Data Path : Z:\pestpcbsrv\HPCHEM1\ECD_Q\Data\PQ011922\
 Data File : PQ055811.D
 Signal(s) : Signal #1: ECD1A.ch Signal #2: ECD2B.ch
 Acq On : 19 Jan 2022 23:05
 Operator : AJ\MA
 Sample : AR1248ICV500
 Misc :
 ALS Vial : 29 Sample Multiplier: 1

Instrument :
 ECD_Q
ClientSampleId :
 ICVPQ011922AR1248

Manual Integrations
APPROVED
 Reviewed By :Ankita Jodhani 01/25/2022
 Supervised By :mohammad ahmed 01/25/2022

Integration File signal 1: autoint1.e
 Integration File signal 2: autoint2.e
 Quant Time: Jan 20 13:19:55 2022
 Quant Method : Z:\pestpcbsrv\HPCHEM1\ECD_Q\Method\PQ011922.M
 Quant Title : GC EXTRACTABLES
 QLast Update : Thu Jan 20 13:18:56 2022
 Response via : Initial Calibration
 Integrator: ChemStation

Volume Inj. : 2 µl
 Signal #1 Phase : ZB-MR1 Signal #2 Phase: ZB-MR2
 Signal #1 Info : 30Mx0.32mmx 0.50µ Signal #2 Info : 30M x 0.32mm x 0.25µm

Compound	RT#1	RT#2	Resp#1	Resp#2	ng/ml	ng/ml

System Monitoring Compounds						
1) SA Tetrachlo...	5.237	4.296	698.3E6	588.7E6	51.554	52.356
2) SA Decachlor...	11.420	9.663	760.8E6	424.1E6	52.115	53.177
Target Compounds						
21) L5 AR-1248-1	6.565	5.567	102.3E6	87365776	488.644	505.413
22) L5 AR-1248-2	6.855	5.826	160.3E6	162.0E6	500.703	507.926
23) L5 AR-1248-3	7.074	5.872	192.4E6	166.9E6	508.496	509.935
24) L5 AR-1248-4	7.505	6.058	212.2E6	193.0E6	501.554	511.537
25) L5 AR-1248-5	7.546	6.485	230.8E6	187.0E6	501.249	508.650m

(f)=RT Delta > 1/2 Window (#)=Amounts differ by > 25% (m)=manual int.

Data Path : Z:\pestpcbsrv\HPCHEM1\ECD_Q\Data\PQ011922\
 Data File : PQ055811.D
 Signal(s) : Signal #1: ECD1A.ch Signal #2: ECD2B.ch
 Acq On : 19 Jan 2022 23:05
 Operator : AJ\MA
 Sample : AR1248ICV500
 Misc :
 ALS Vial : 29 Sample Multiplier: 1

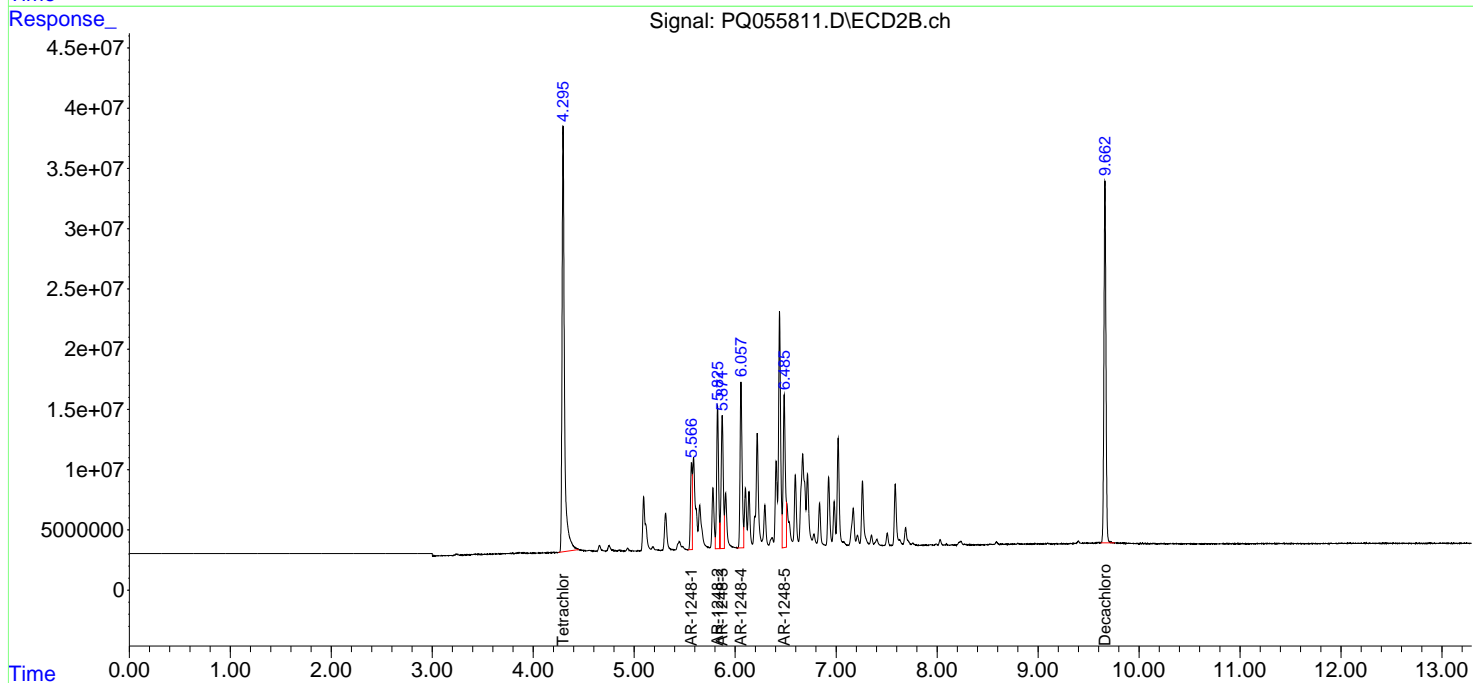
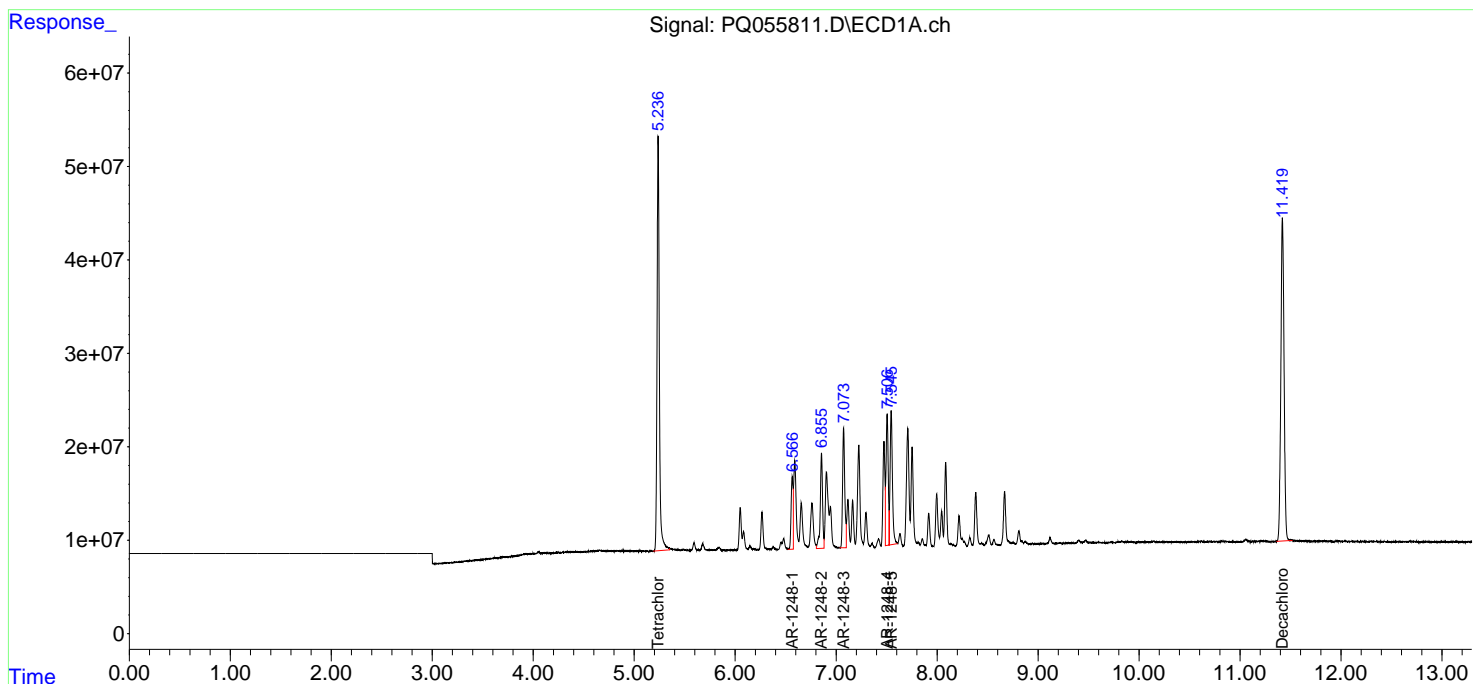
Instrument :
 ECD_Q
ClientSampleId :
 ICVPQ011922AR1248

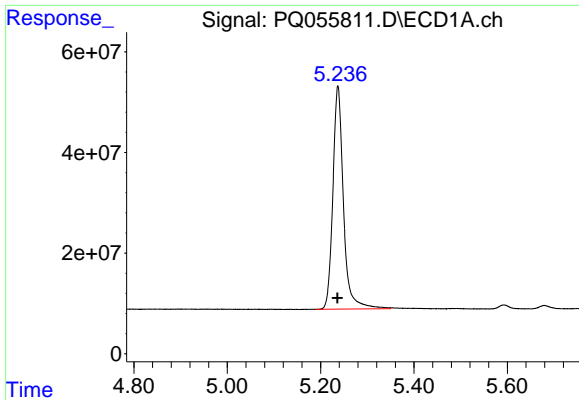
Manual Integrations
APPROVED

Reviewed By :Ankita Jodhani 01/25/2022
 Supervised By :mohammad ahmed 01/25/2022

Integration File signal 1: autoint1.e
 Integration File signal 2: autoint2.e
 Quant Time: Jan 20 13:19:55 2022
 Quant Method : Z:\pestpcbsrv\HPCHEM1\ECD_Q\Method\PQ011922.M
 Quant Title : GC EXTRACTABLES
 QLast Update : Thu Jan 20 13:18:56 2022
 Response via : Initial Calibration
 Integrator: ChemStation

Volume Inj. : 2 µl
 Signal #1 Phase : ZB-MR1 Signal #2 Phase: ZB-MR2
 Signal #1 Info : 30Mx0.32mmx 0.50µm Signal #2 Info : 30M x 0.32mm x 0.25µm

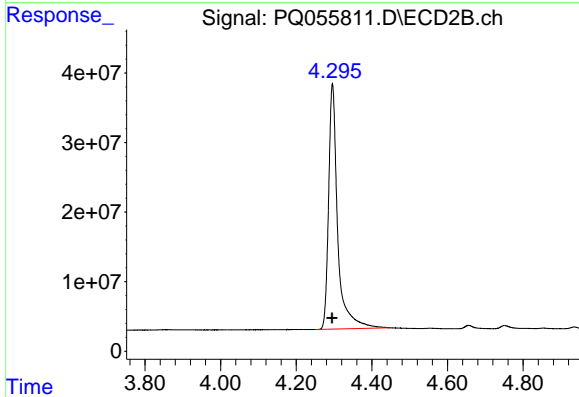




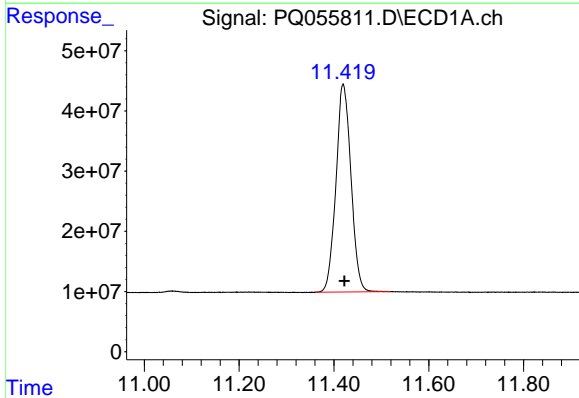
#1 Tetrachloro-m-xylene
 R.T.: 5.237 min
 Delta R.T.: 0.001 min
 Response: 698252492
 Conc: 51.55 ng/ml

Instrument : ECD_Q
 ClientSampleId : ICVPQ011922AR1248

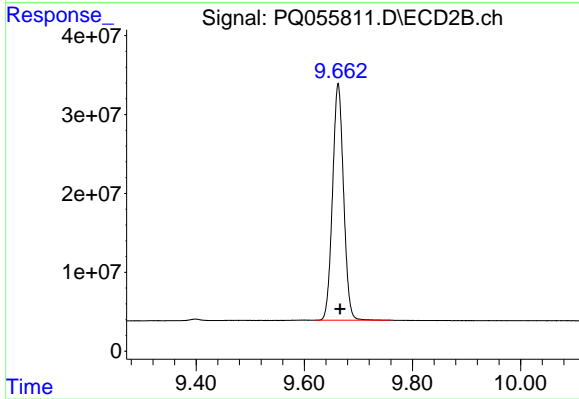
Manual Integrations
APPROVED
 Reviewed By :Ankita Jodhani 01/25/2022
 Supervised By :mohammad ahmed 01/25/2022



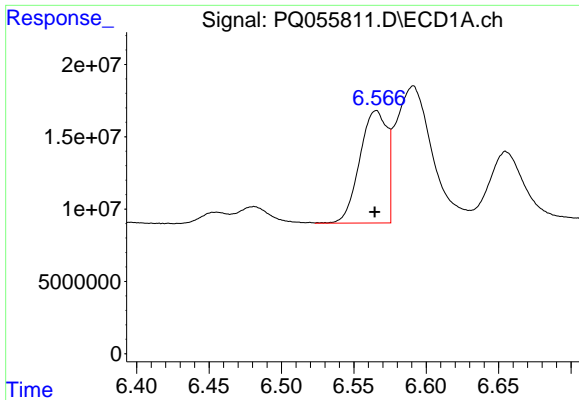
#1 Tetrachloro-m-xylene
 R.T.: 4.296 min
 Delta R.T.: 0.001 min
 Response: 588674975
 Conc: 52.36 ng/ml



#2 Decachlorobiphenyl
 R.T.: 11.420 min
 Delta R.T.: -0.002 min
 Response: 760803016
 Conc: 52.11 ng/ml



#2 Decachlorobiphenyl
 R.T.: 9.663 min
 Delta R.T.: -0.004 min
 Response: 424091484
 Conc: 53.18 ng/ml



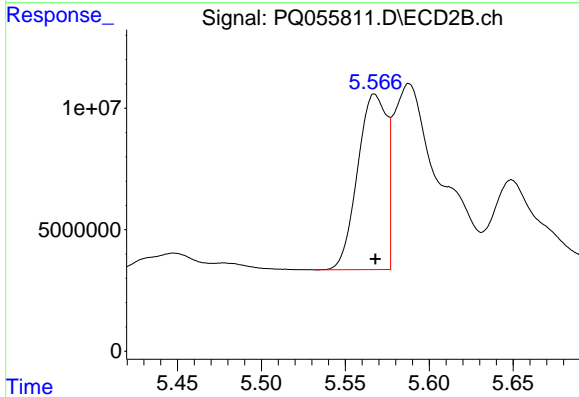
#21 AR-1248-1

R.T.: 6.565 min
 Delta R.T.: 0.001 min
 Response: 102320559
 Conc: 488.64 ng/ml

Instrument : ECD_Q
 ClientSampleId : ICVPQ011922AR1248

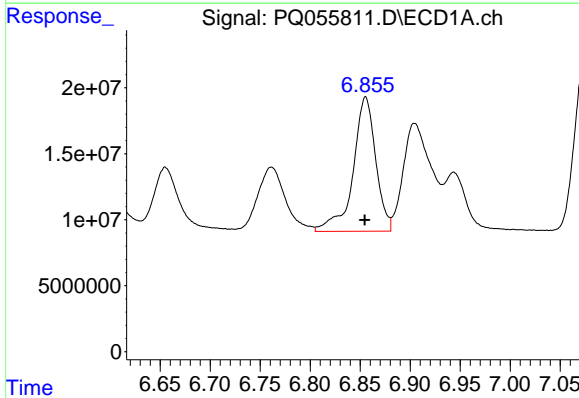
Manual Integrations
 APPROVED

Reviewed By :Ankita Jodhani 01/25/2022
 Supervised By :mohammad ahmed 01/25/2022



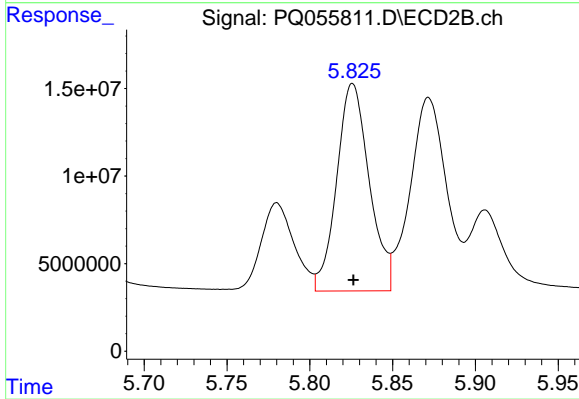
#21 AR-1248-1

R.T.: 5.567 min
 Delta R.T.: 0.000 min
 Response: 87365776
 Conc: 505.41 ng/ml



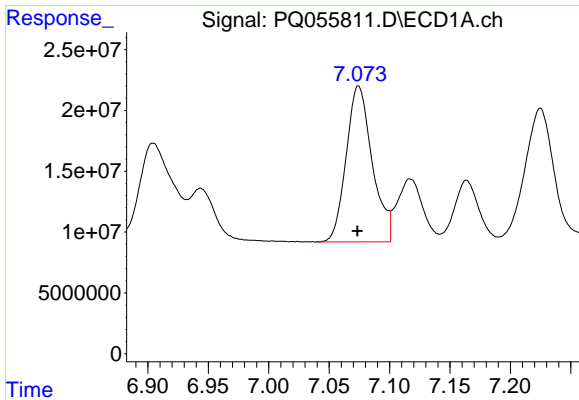
#22 AR-1248-2

R.T.: 6.855 min
 Delta R.T.: 0.000 min
 Response: 160317558
 Conc: 500.70 ng/ml



#22 AR-1248-2

R.T.: 5.826 min
 Delta R.T.: 0.000 min
 Response: 162030678
 Conc: 507.93 ng/ml



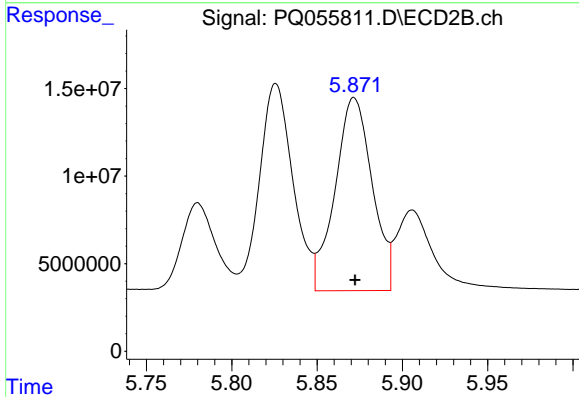
#23 AR-1248-3

R.T.: 7.074 min
 Delta R.T.: 0.000 min
 Response: 192383503
 Conc: 508.50 ng/ml

Instrument :
 ECD_Q
 ClientSampleId :
 ICVPQ011922AR1248

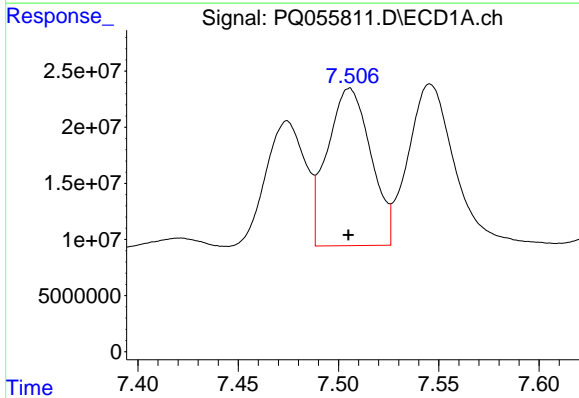
Manual Integrations
 APPROVED

Reviewed By :Ankita Jodhani 01/25/2022
 Supervised By :mohammad ahmed 01/25/2022



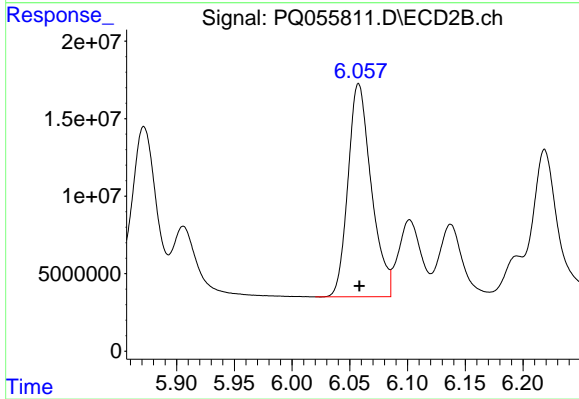
#23 AR-1248-3

R.T.: 5.872 min
 Delta R.T.: 0.000 min
 Response: 166936326
 Conc: 509.93 ng/ml



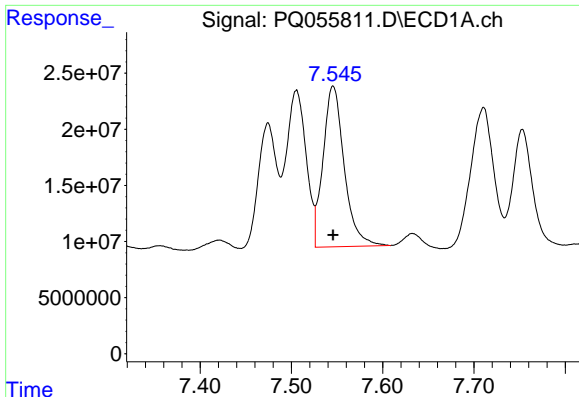
#24 AR-1248-4

R.T.: 7.505 min
 Delta R.T.: 0.000 min
 Response: 212184202
 Conc: 501.55 ng/ml



#24 AR-1248-4

R.T.: 6.058 min
 Delta R.T.: 0.000 min
 Response: 192953269
 Conc: 511.54 ng/ml



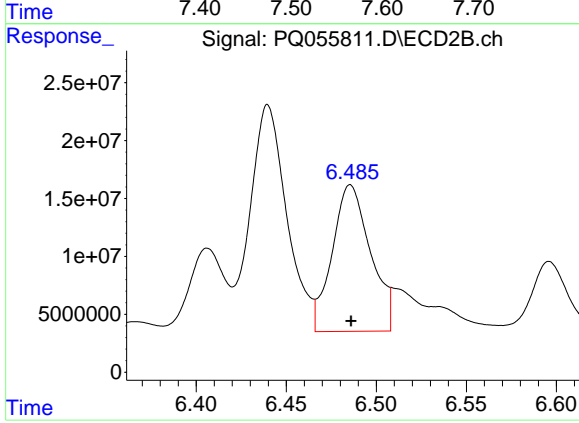
#25 AR-1248-5

R.T.: 7.546 min
 Delta R.T.: 0.000 min
 Response: 230800890
 Conc: 501.25 ng/ml

Instrument :
 ECD_Q
 ClientSampleId :
 ICVPQ011922AR1248

Manual Integrations
 APPROVED

Reviewed By :Ankita Jodhani 01/25/2022
 Supervised By :mohammad ahmed 01/25/2022



#25 AR-1248-5

R.T.: 6.485 min
 Delta R.T.: 0.000 min
 Response: 187008501
 Conc: 508.65 ng/ml m