

Data Path : Z:\pestpcbsrv\HPCHEM1\ECD_Q\Data\PQ012220\
 Data File : PQ046211.D
 Signal(s) : Signal #1: ECD1A.ch Signal #2: ECD2B.ch
 Acq On : 23 Jan 2020 04:16
 Operator : AJ\MA
 Sample : AR1242ICC500
 Misc :
 ALS Vial : 10 Sample Multiplier: 1

Instrument :
 ECD_Q
 ClientSampleId :
 AR1242ICC500

Integration File signal 1: autoint1.e
 Integration File signal 2: autoint2.e
 Quant Time: Jan 23 05:24:48 2020
 Quant Method : Z:\pestpcbsrv\HPCHEM1\ECD_Q\Method\PQ012220.M
 Quant Title : GC EXTRACTABLES
 QLast Update : Thu Jan 23 04:51:13 2020
 Response via : Initial Calibration
 Integrator: ChemStation

Volume Inj. : 2 µl
 Signal #1 Phase : ZB-MR1 Signal #2 Phase: ZB-MR2
 Signal #1 Info : 30Mx0.32mmx 0.50µ Signal #2 Info : 30M x 0.32mm x 0.25µm

Compound	RT#1	RT#2	Resp#1	Resp#2	ng/ml	ng/ml

System Monitoring Compounds						
1) SA Tetrachlo...	5.206	4.355	215.6E6	88024145	50.000	50.000
2) SA Decachlor...	11.340	9.777	559.3E6	220.6E6	50.000	50.000
Target Compounds						
16) L4 AR-1242-1	6.519	5.634	62742497	25674151	500.000	500.000
17) L4 AR-1242-2	6.542	5.655	101.4E6	40213774	500.000	500.000
18) L4 AR-1242-3	6.610	5.851	65076926	20669188	500.000	500.000
19) L4 AR-1242-4	6.716	5.944	53139468	22637998	500.000	500.000
20) L4 AR-1242-5	7.497	6.514	66110986	28340736	500.000	500.000

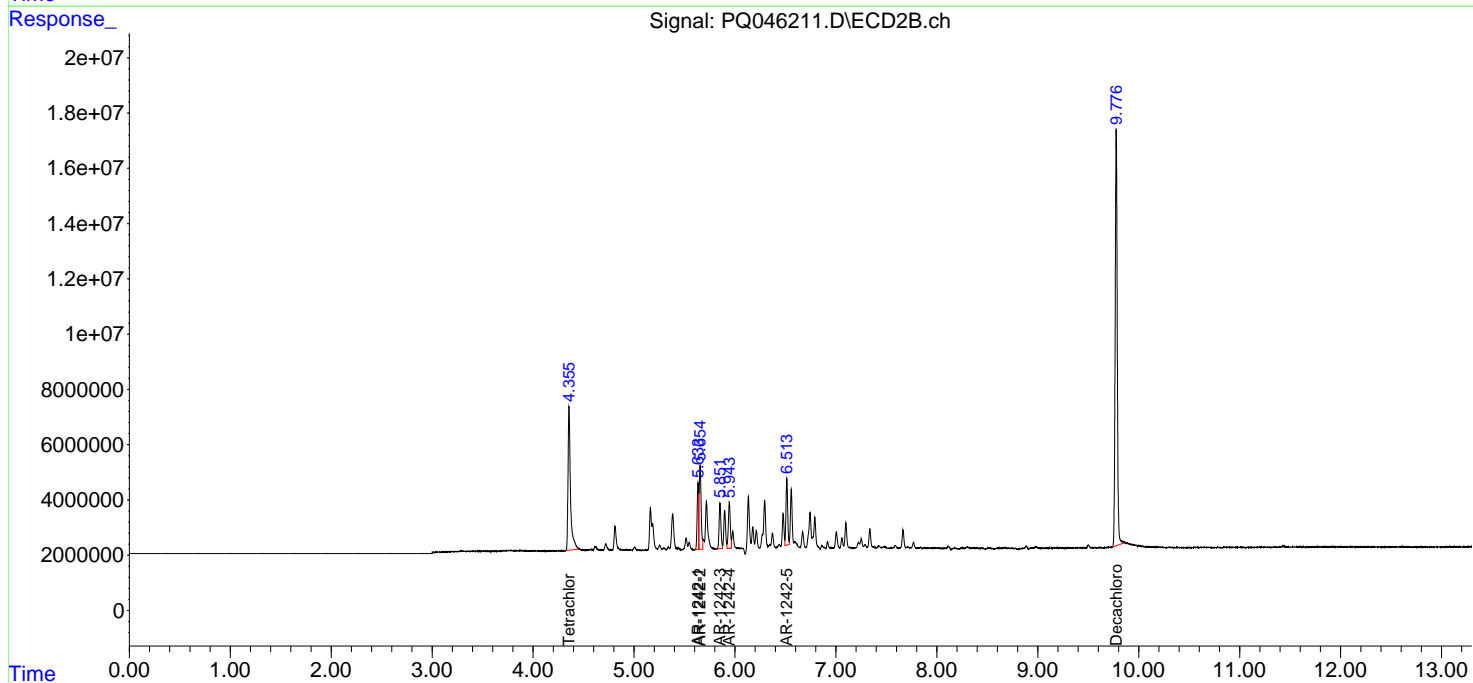
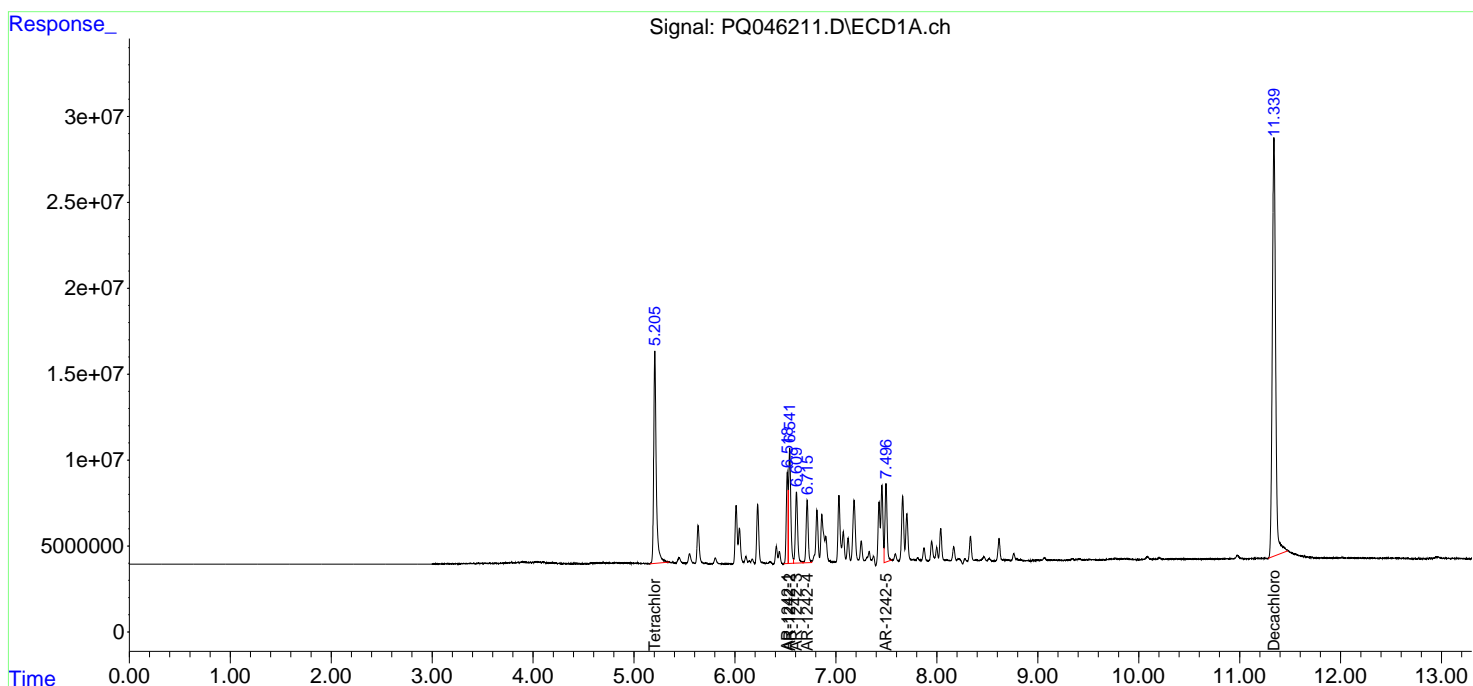
(f)=RT Delta > 1/2 Window (#)=Amounts differ by > 25% (m)=manual int.

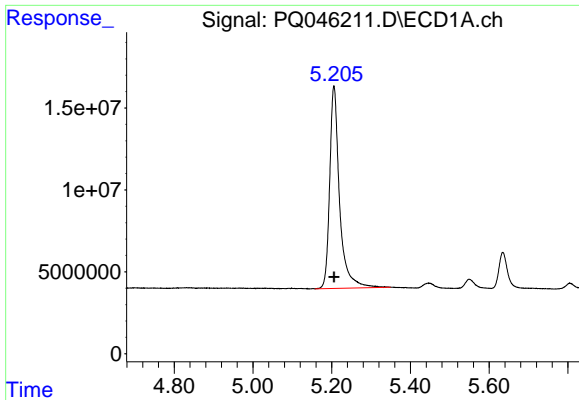
Data Path : Z:\pestpcbsrv\HPCHEM1\ECD_Q\Data\PQ012220\
 Data File : PQ046211.D
 Signal(s) : Signal #1: ECD1A.ch Signal #2: ECD2B.ch
 Acq On : 23 Jan 2020 04:16
 Operator : AJ\MA
 Sample : AR1242ICC500
 Misc :
 ALS Vial : 10 Sample Multiplier: 1

Instrument :
 ECD_Q
 ClientSampleId :
 AR1242ICC500

Integration File signal 1: autoint1.e
 Integration File signal 2: autoint2.e
 Quant Time: Jan 23 05:24:48 2020
 Quant Method : Z:\pestpcbsrv\HPCHEM1\ECD_Q\Method\PQ012220.M
 Quant Title : GC EXTRACTABLES
 QLast Update : Thu Jan 23 04:51:13 2020
 Response via : Initial Calibration
 Integrator: ChemStation

Volume Inj. : 2 µl
 Signal #1 Phase : ZB-MR1 Signal #2 Phase: ZB-MR2
 Signal #1 Info : 30Mx0.32mmx 0.50µ Signal #2 Info : 30M x 0.32mm x 0.25µm

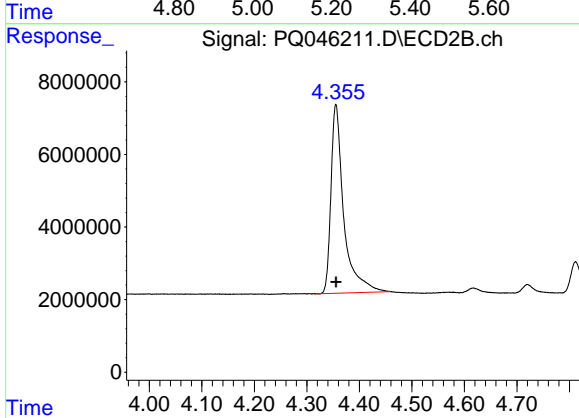




#1 Tetrachloro-m-xylene

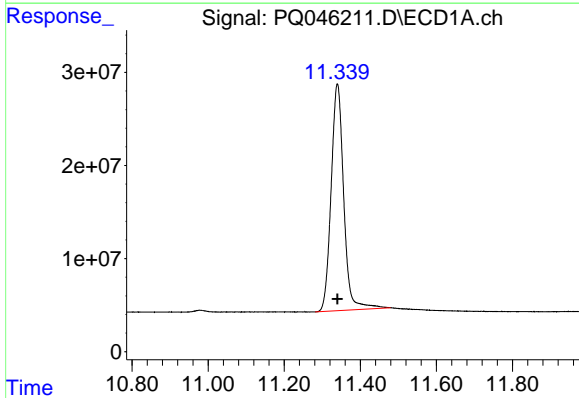
R.T.: 5.206 min
Delta R.T.: 0.000 min
Response: 215600401
Conc: 50.00 ng/ml

Instrument :
ECD_Q
ClientSampleId :
AR1242ICC500



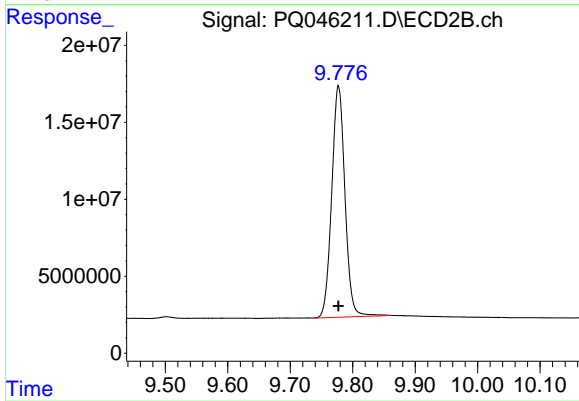
#1 Tetrachloro-m-xylene

R.T.: 4.355 min
Delta R.T.: 0.000 min
Response: 88024145
Conc: 50.00 ng/ml



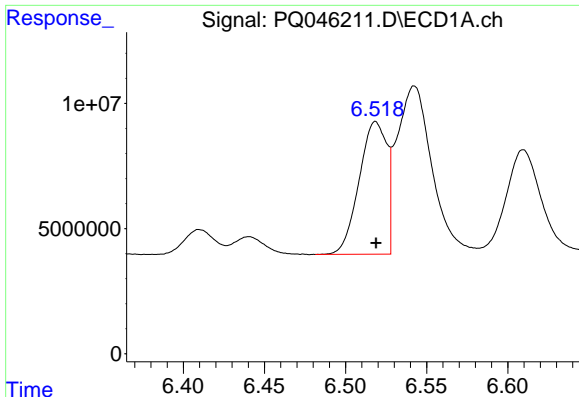
#2 Decachlorobiphenyl

R.T.: 11.340 min
Delta R.T.: 0.000 min
Response: 559265318
Conc: 50.00 ng/ml



#2 Decachlorobiphenyl

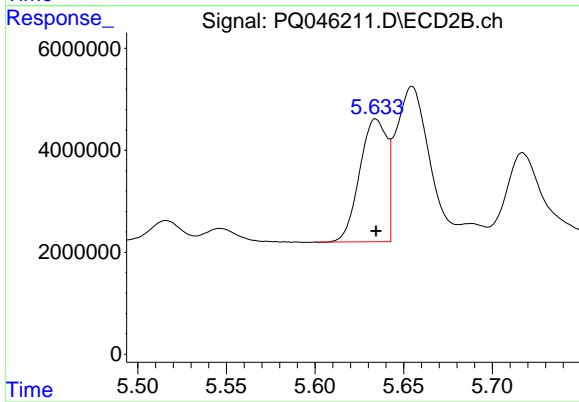
R.T.: 9.777 min
Delta R.T.: 0.000 min
Response: 220596291
Conc: 50.00 ng/ml



#16 AR-1242-1

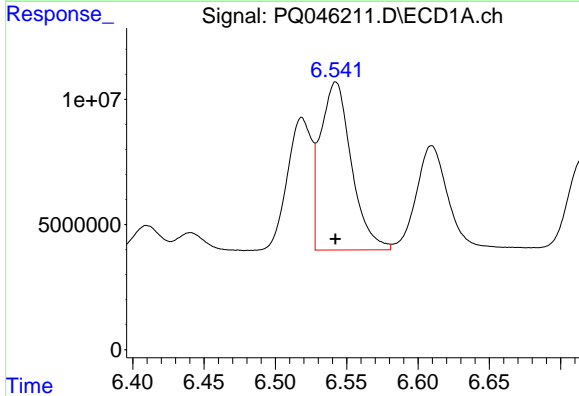
R.T.: 6.519 min
 Delta R.T.: 0.000 min
 Response: 62742497
 Conc: 500.00 ng/ml

Instrument :
 ECD_Q
 ClientSampleId :
 AR1242ICC500



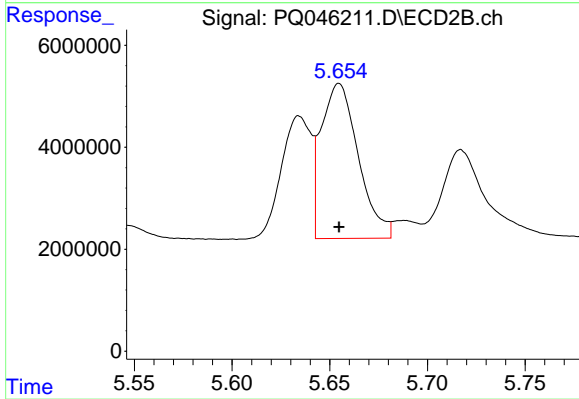
#16 AR-1242-1

R.T.: 5.634 min
 Delta R.T.: 0.000 min
 Response: 25674151
 Conc: 500.00 ng/ml



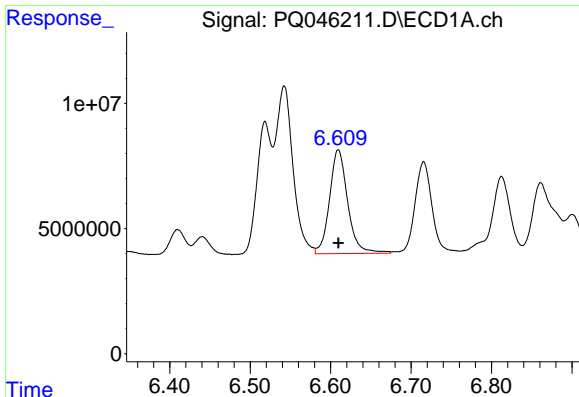
#17 AR-1242-2

R.T.: 6.542 min
 Delta R.T.: 0.000 min
 Response: 101377560
 Conc: 500.00 ng/ml



#17 AR-1242-2

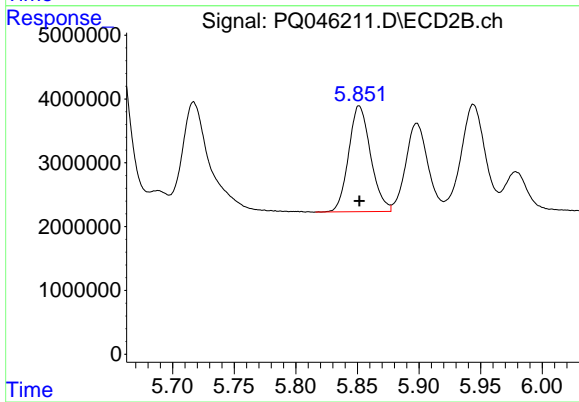
R.T.: 5.655 min
 Delta R.T.: 0.000 min
 Response: 40213774
 Conc: 500.00 ng/ml



#18 AR-1242-3

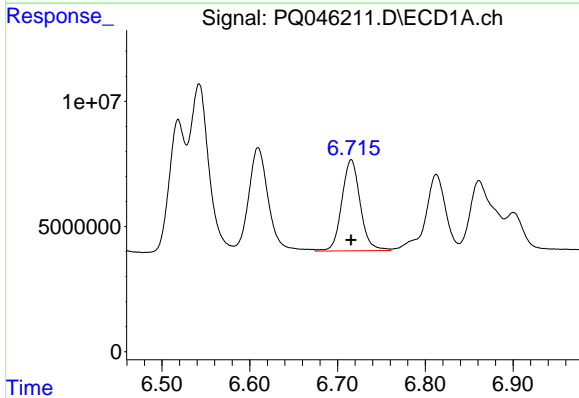
R.T.: 6.610 min
 Delta R.T.: 0.000 min
 Response: 65076926
 Conc: 500.00 ng/ml

Instrument :
 ECD_Q
 ClientSampleId :
 AR1242ICC500



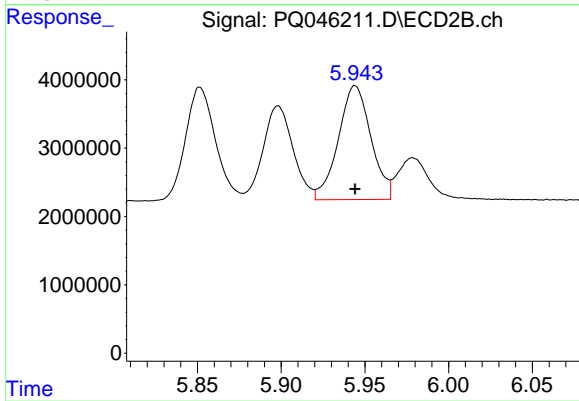
#18 AR-1242-3

R.T.: 5.851 min
 Delta R.T.: 0.000 min
 Response: 20669188
 Conc: 500.00 ng/ml



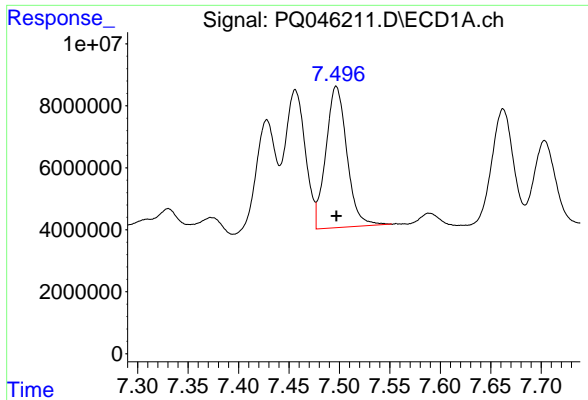
#19 AR-1242-4

R.T.: 6.716 min
 Delta R.T.: 0.000 min
 Response: 53139468
 Conc: 500.00 ng/ml



#19 AR-1242-4

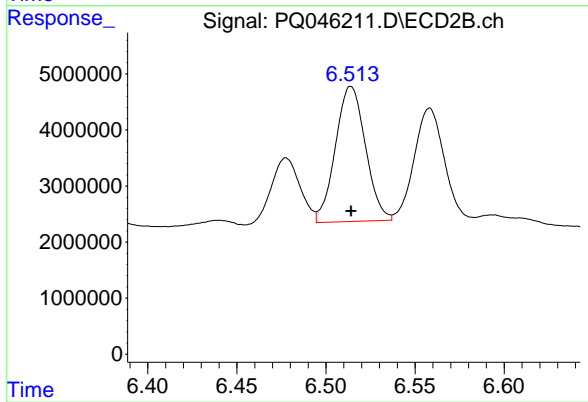
R.T.: 5.944 min
 Delta R.T.: 0.000 min
 Response: 22637998
 Conc: 500.00 ng/ml



#20 AR-1242-5

R.T.: 7.497 min
Delta R.T.: 0.000 min
Response: 66110986
Conc: 500.00 ng/ml

Instrument :
ECD_Q
ClientSampleId :
AR1242ICC500



#20 AR-1242-5

R.T.: 6.514 min
Delta R.T.: 0.000 min
Response: 28340736
Conc: 500.00 ng/ml