

Data Path : Z:\pestpcbsrv\HPCHEM1\ECD\_Q\Data\PQ012220\  
 Data File : PQ046214.D  
 Signal(s) : Signal #1: ECD1A.ch Signal #2: ECD2B.ch  
 Acq On : 23 Jan 2020 05:05  
 Operator : AJ\MA  
 Sample : AR1262ICC500  
 Misc :  
 ALS Vial : 13 Sample Multiplier: 1

Instrument :  
 ECD\_Q  
 ClientSampleId :  
 AR1262ICC500

Integration File signal 1: autoint1.e  
 Integration File signal 2: autoint2.e  
 Quant Time: Jan 23 05:58:42 2020  
 Quant Method : Z:\pestpcbsrv\HPCHEM1\ECD\_Q\Method\PQ012220.M  
 Quant Title : GC EXTRACTABLES  
 QLast Update : Thu Jan 23 05:58:18 2020  
 Response via : Initial Calibration  
 Integrator: ChemStation

Volume Inj. : 2 µl  
 Signal #1 Phase : ZB-MR1 Signal #2 Phase: ZB-MR2  
 Signal #1 Info : 30Mx0.32mmx 0.50µ Signal #2 Info : 30M x 0.32mm x 0.25µm

Compound	RT#1	RT#2	Resp#1	Resp#2	ng/ml	ng/ml
-----						
System Monitoring Compounds						
1) SA Tetrachlo...	5.205	4.355	248.6E6	103.6E6	50.000	50.000
2) SA Decachlor...	11.339	9.777	597.7E6	244.4E6	50.000	50.000
Target Compounds						
36) L8 AR-1262-1	8.839	7.768	266.5E6	64094971	500.000	500.000
37) L8 AR-1262-2	9.416	8.320	512.5E6	264.9E6	500.000	500.000
38) L8 AR-1262-3	9.745	8.609	368.1E6	104.0E6	500.000	500.000
39) L8 AR-1262-4	9.842	8.675	311.3E6	206.5E6	500.000	500.000
40) L8 AR-1262-5	10.540	9.189	218.1E6	96091907	500.000	500.000
-----						

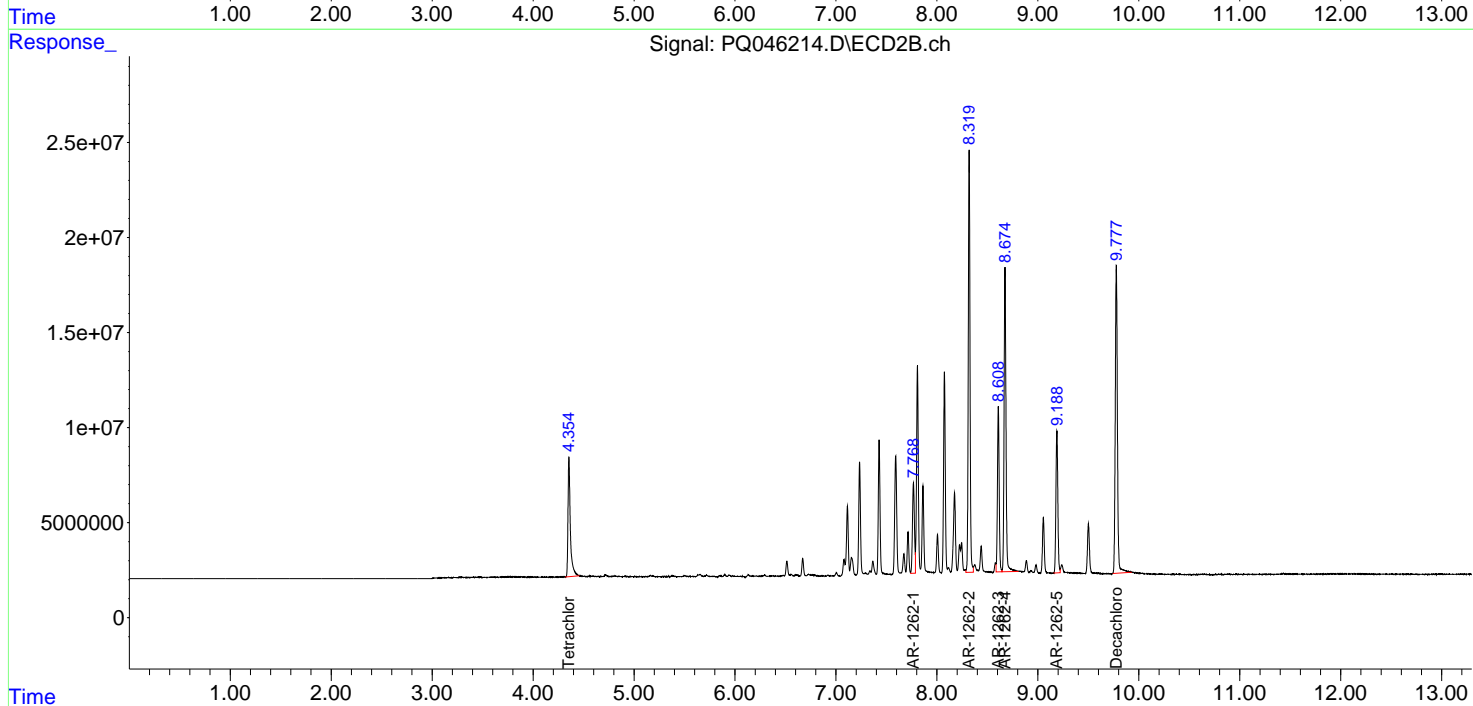
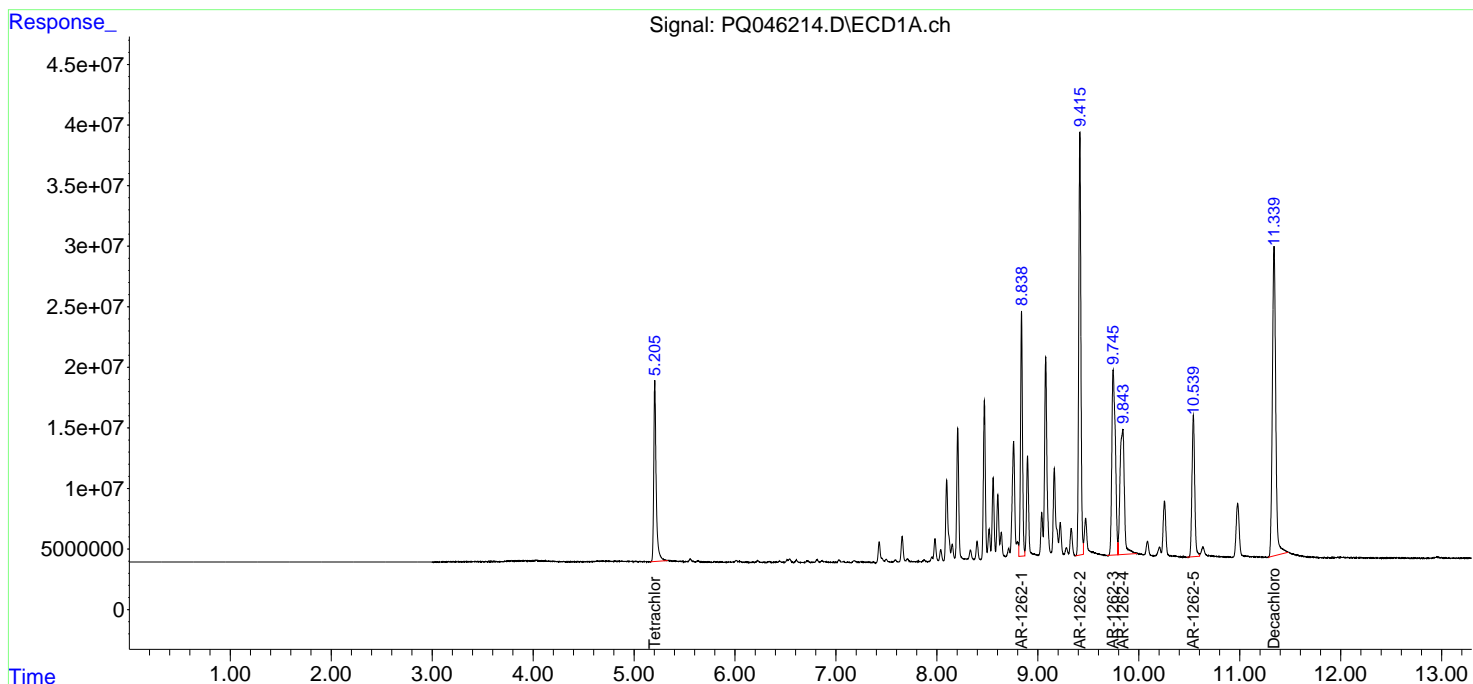
(f)=RT Delta > 1/2 Window (#)=Amounts differ by > 25% (m)=manual int.

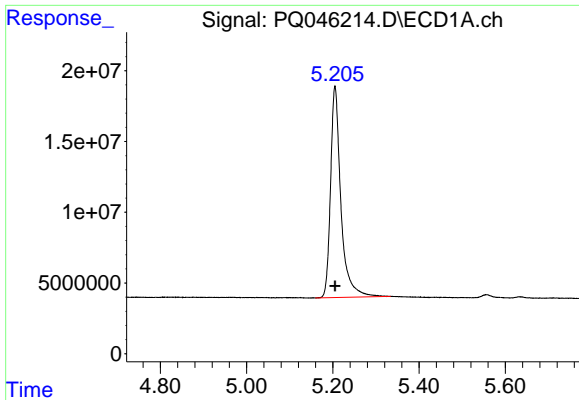
Data Path : Z:\pestpcbsrv\HPCHEM1\ECD\_Q\Data\PQ012220\  
 Data File : PQ046214.D  
 Signal(s) : Signal #1: ECD1A.ch Signal #2: ECD2B.ch  
 Acq On : 23 Jan 2020 05:05  
 Operator : AJ\MA  
 Sample : AR1262ICC500  
 Misc :  
 ALS Vial : 13 Sample Multiplier: 1

Instrument :  
 ECD\_Q  
 ClientSampleId :  
 AR1262ICC500

Integration File signal 1: autoint1.e  
 Integration File signal 2: autoint2.e  
 Quant Time: Jan 23 05:58:42 2020  
 Quant Method : Z:\pestpcbsrv\HPCHEM1\ECD\_Q\Method\PQ012220.M  
 Quant Title : GC EXTRACTABLES  
 QLast Update : Thu Jan 23 05:58:18 2020  
 Response via : Initial Calibration  
 Integrator: ChemStation

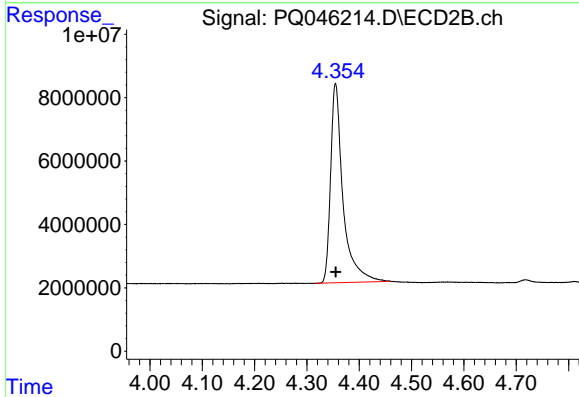
Volume Inj. : 2 µl  
 Signal #1 Phase : ZB-MR1 Signal #2 Phase: ZB-MR2  
 Signal #1 Info : 30Mx0.32mmx 0.50µ Signal #2 Info : 30M x 0.32mm x 0.25µm



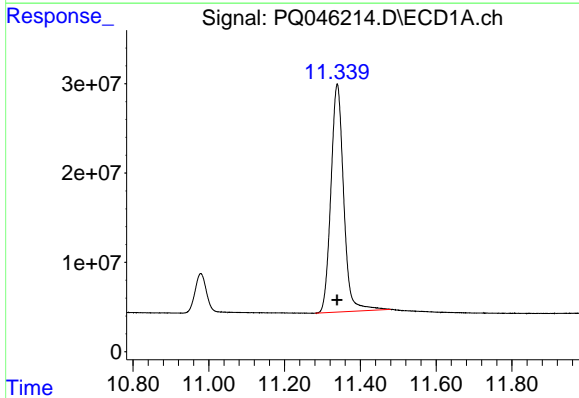


#1 Tetrachloro-m-xylene  
 R.T.: 5.205 min  
 Delta R.T.: 0.000 min  
 Response: 248610667  
 Conc: 50.00 ng/ml

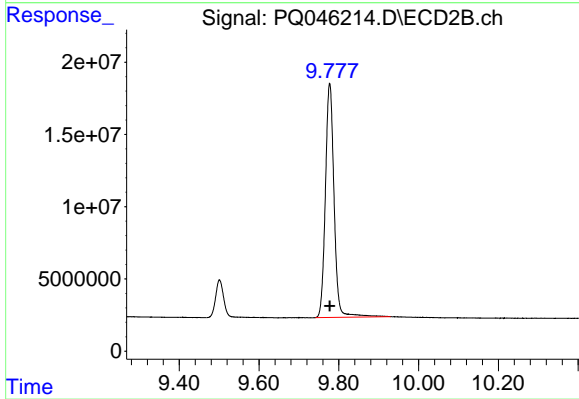
Instrument :  
 ECD\_Q  
 ClientSampleId :  
 AR1262ICC500



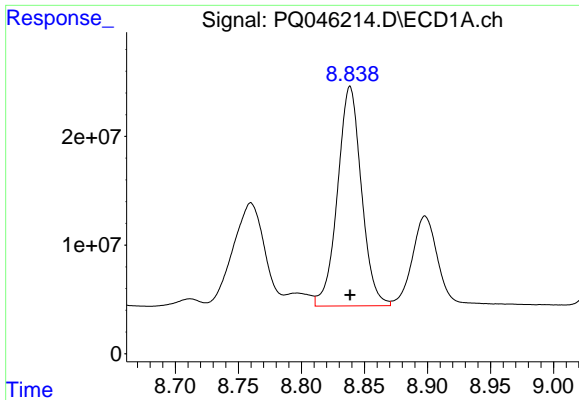
#1 Tetrachloro-m-xylene  
 R.T.: 4.355 min  
 Delta R.T.: 0.000 min  
 Response: 103614706  
 Conc: 50.00 ng/ml



#2 Decachlorobiphenyl  
 R.T.: 11.339 min  
 Delta R.T.: 0.000 min  
 Response: 597730224  
 Conc: 50.00 ng/ml



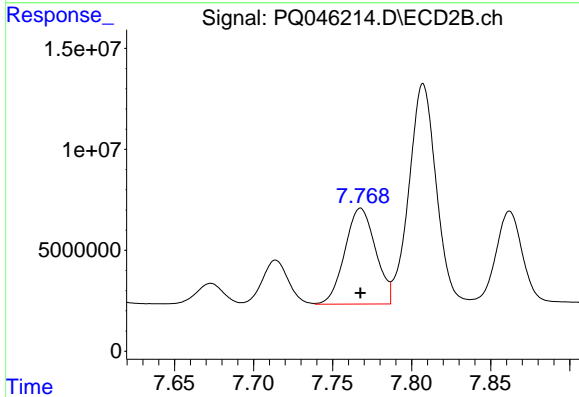
#2 Decachlorobiphenyl  
 R.T.: 9.777 min  
 Delta R.T.: 0.000 min  
 Response: 244404639  
 Conc: 50.00 ng/ml



#36 AR-1262-1

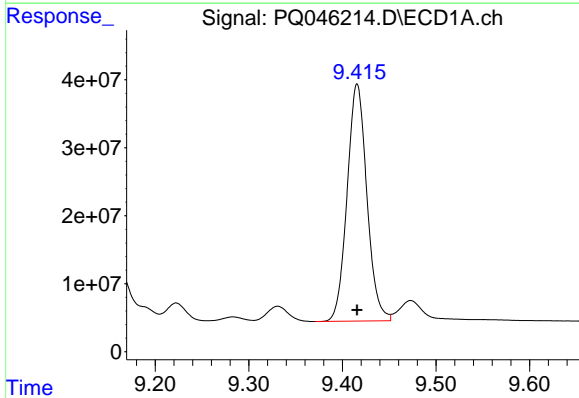
R.T.: 8.839 min  
 Delta R.T.: 0.000 min  
 Response: 266511365  
 Conc: 500.00 ng/ml

Instrument :  
 ECD\_Q  
 ClientSampleId :  
 AR1262ICC500



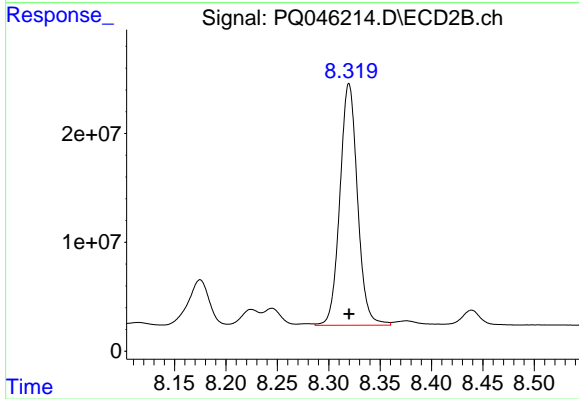
#36 AR-1262-1

R.T.: 7.768 min  
 Delta R.T.: 0.000 min  
 Response: 64094971  
 Conc: 500.00 ng/ml



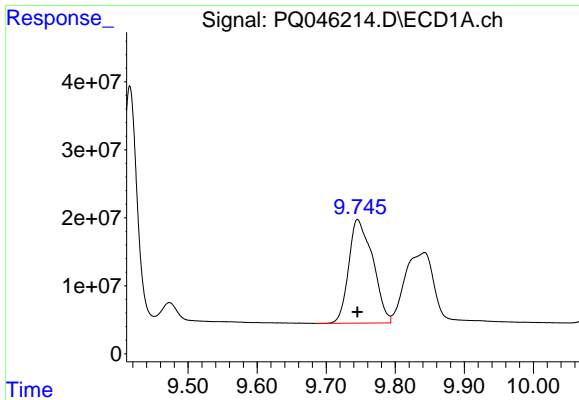
#37 AR-1262-2

R.T.: 9.416 min  
 Delta R.T.: 0.000 min  
 Response: 512499508  
 Conc: 500.00 ng/ml



#37 AR-1262-2

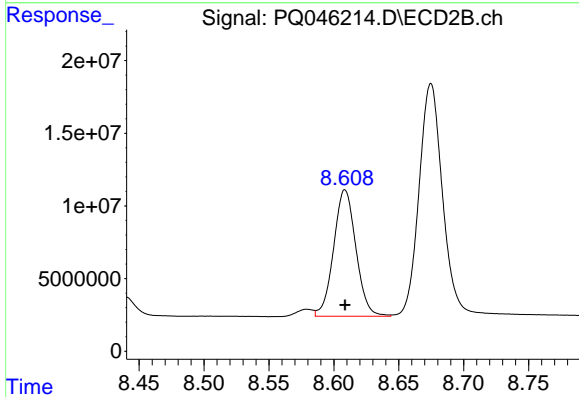
R.T.: 8.320 min  
 Delta R.T.: 0.000 min  
 Response: 264857061  
 Conc: 500.00 ng/ml



#38 AR-1262-3

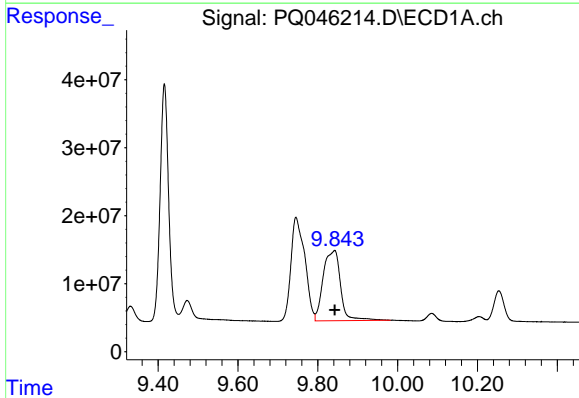
R.T.: 9.745 min  
 Delta R.T.: 0.000 min  
 Response: 368090459  
 Conc: 500.00 ng/ml

Instrument :  
 ECD\_Q  
 ClientSampleId :  
 AR1262ICC500



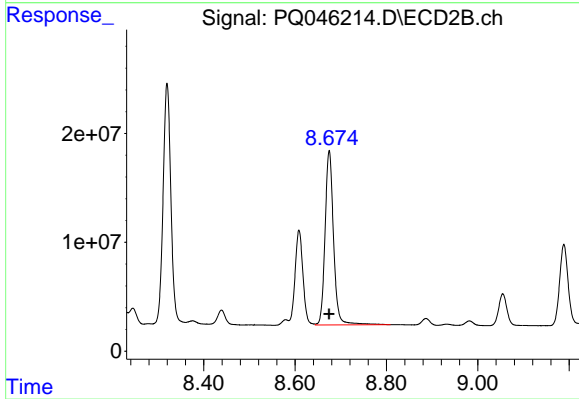
#38 AR-1262-3

R.T.: 8.609 min  
 Delta R.T.: 0.000 min  
 Response: 103983619  
 Conc: 500.00 ng/ml



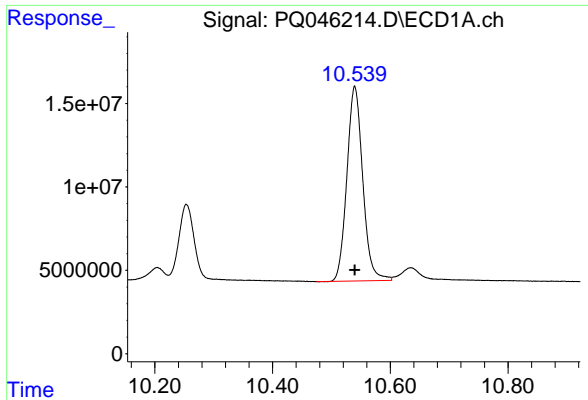
#39 AR-1262-4

R.T.: 9.842 min  
 Delta R.T.: 0.000 min  
 Response: 311254775  
 Conc: 500.00 ng/ml



#39 AR-1262-4

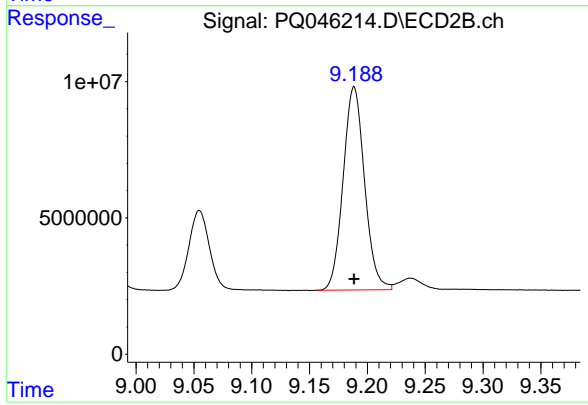
R.T.: 8.675 min  
 Delta R.T.: 0.000 min  
 Response: 206483844  
 Conc: 500.00 ng/ml



#40 AR-1262-5

R.T.: 10.540 min  
Delta R.T.: 0.000 min  
Response: 218100491  
Conc: 500.00 ng/ml

Instrument :  
ECD\_Q  
ClientSampleId :  
AR1262ICC500



#40 AR-1262-5

R.T.: 9.189 min  
Delta R.T.: 0.000 min  
Response: 96091907  
Conc: 500.00 ng/ml