

Data Path : Z:\pestpcbsrv\HPCHEM1\ECD\_Q\Data\PQ012224\  
 Data File : PQ064883.D  
 Signal(s) : Signal #1: ECD1A.ch Signal #2: ECD2B.ch  
 Acq On : 22 Jan 2024 10:08  
 Operator : YP\AJ  
 Sample : AR1248CCC500  
 Misc :  
 ALS Vial : 5 Sample Multiplier: 1

**Instrument :**  
 ECD\_Q  
**ClientSampleId :**  
 AR1248CCC500

Integration File signal 1: autoint1.e  
 Integration File signal 2: autoint2.e  
 Quant Time: Jan 23 00:31:09 2024  
 Quant Method : Z:\pestpcbsrv\HPCHEM1\ECD\_Q\Method\PQ011724.M  
 Quant Title : GC EXTRACTABLES  
 QLast Update : Thu Jan 18 00:09:27 2024  
 Response via : Initial Calibration  
 Integrator: ChemStation

Volume Inj. : 2 µl  
 Signal #1 Phase : ZB-MR1 Signal #2 Phase: ZB-MR2  
 Signal #1 Info : 30Mx0.32mmx 0.50µ Signal #2 Info : 30M x 0.32mm x 0.25µm

Compound	RT#1	RT#2	Resp#1	Resp#2	ng/ml	ng/ml
-----						
System Monitoring Compounds						
1) SA Tetrachlo...	3.472	2.743	168.1E6	330.6E6	45.113	49.508
2) SA Decachlor...	8.774	7.525	141.2E6	345.8E6	45.673	47.588
Target Compounds						
21) L5 AR-1248-1	4.595	3.745	33651558	75264946	433.601	448.329
22) L5 AR-1248-2	4.866	3.970	45366602	106.1E6	438.852	452.777
23) L5 AR-1248-3	5.059	4.007	53639968	102.5E6	441.444	456.038
24) L5 AR-1248-4	5.460	4.165	61817210	126.3E6	433.800	453.147
25) L5 AR-1248-5	5.495	4.540	60914226	129.2E6	432.404	451.665
-----						

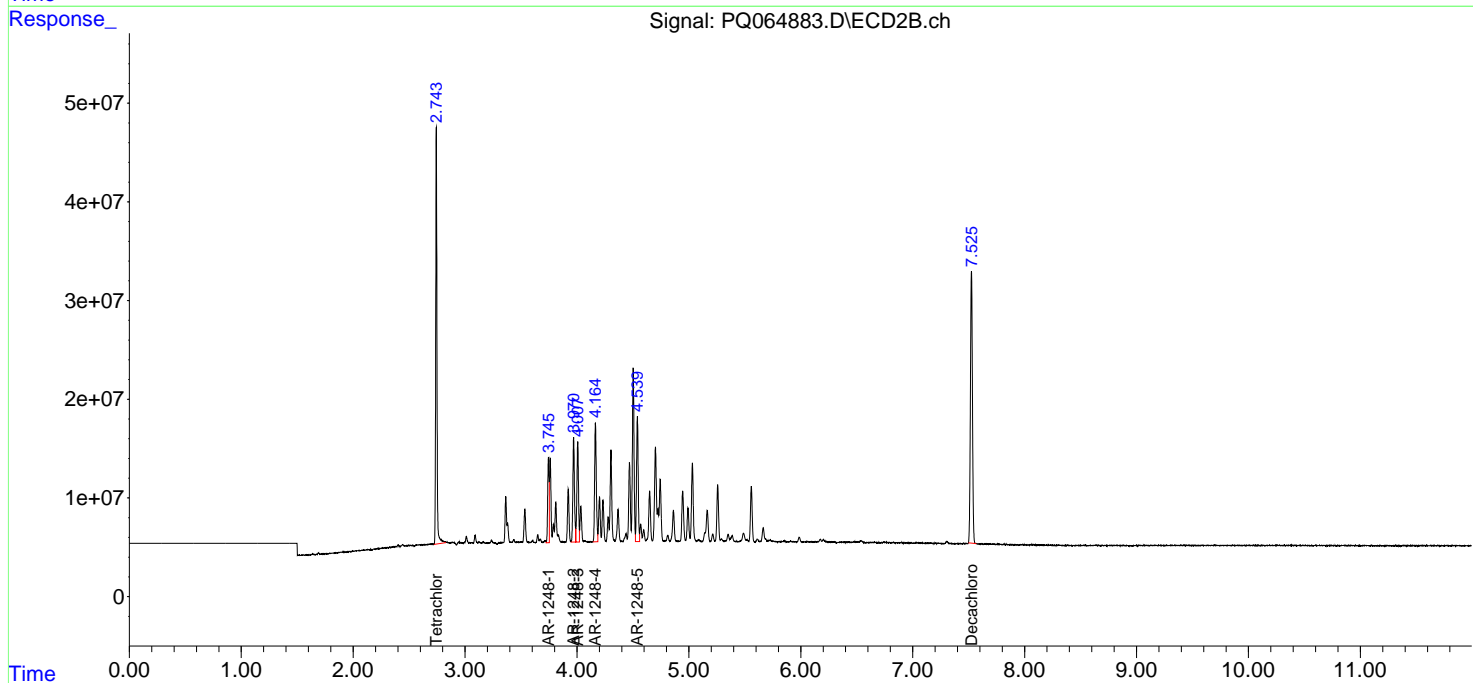
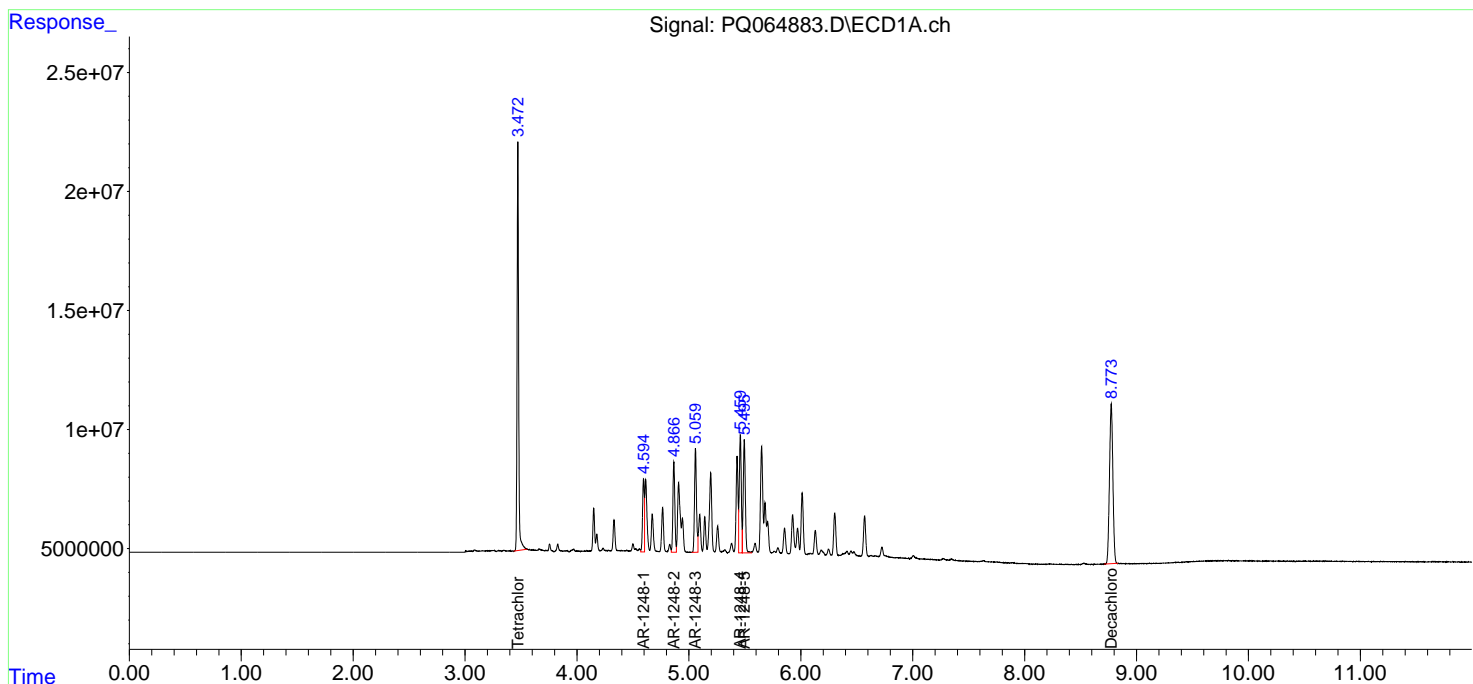
(f)=RT Delta > 1/2 Window (#)=Amounts differ by > 25% (m)=manual int.

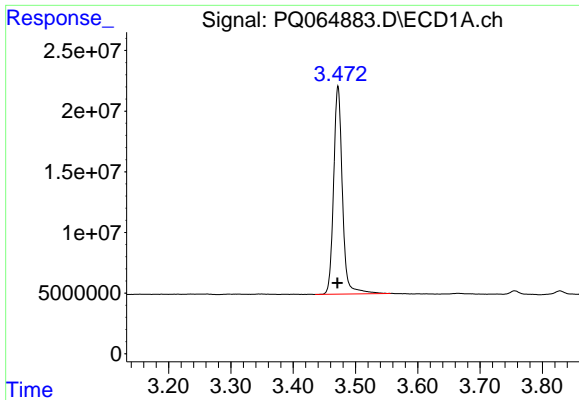
Data Path : Z:\pestpcbsrv\HPCHEM1\ECD\_Q\Data\PQ012224\  
 Data File : PQ064883.D  
 Signal(s) : Signal #1: ECD1A.ch Signal #2: ECD2B.ch  
 Acq On : 22 Jan 2024 10:08  
 Operator : YP\AJ  
 Sample : AR1248CCC500  
 Misc :  
 ALS Vial : 5 Sample Multiplier: 1

Instrument :  
 ECD\_Q  
 ClientSampleId :  
 AR1248CCC500

Integration File signal 1: autoint1.e  
 Integration File signal 2: autoint2.e  
 Quant Time: Jan 23 00:31:09 2024  
 Quant Method : Z:\pestpcbsrv\HPCHEM1\ECD\_Q\Method\PQ011724.M  
 Quant Title : GC EXTRACTABLES  
 QLast Update : Thu Jan 18 00:09:27 2024  
 Response via : Initial Calibration  
 Integrator: ChemStation

Volume Inj. : 2 µl  
 Signal #1 Phase : ZB-MR1 Signal #2 Phase: ZB-MR2  
 Signal #1 Info : 30Mx0.32mmx 0.50µ Signal #2 Info : 30M x 0.32mm x 0.25µm

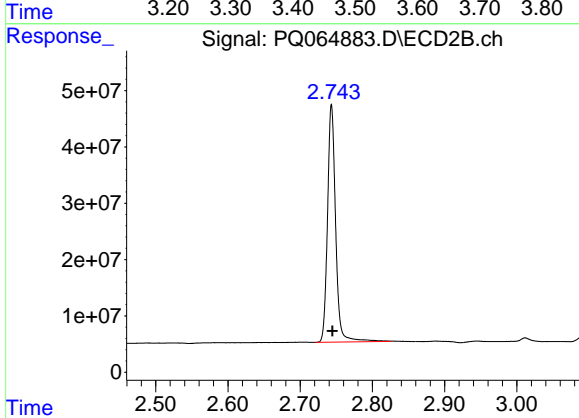




#1 Tetrachloro-m-xylene

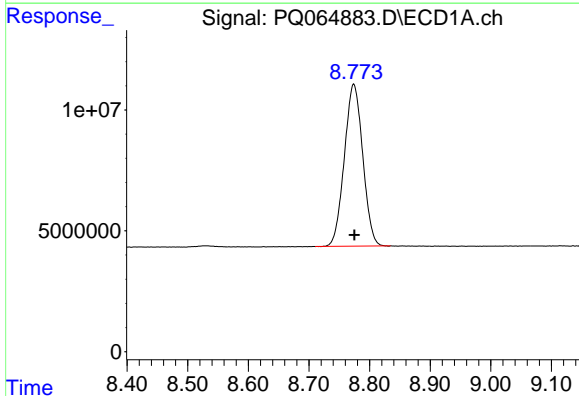
R.T.: 3.472 min  
Delta R.T.: 0.000 min  
Response: 168061403  
Conc: 45.11 ng/ml

Instrument :  
ECD\_Q  
ClientSampleId :  
AR1248CCC500



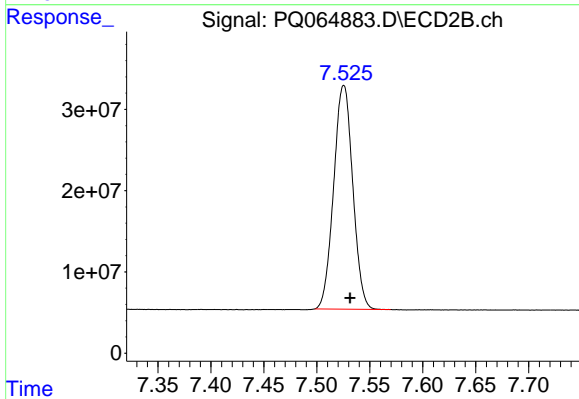
#1 Tetrachloro-m-xylene

R.T.: 2.743 min  
Delta R.T.: -0.001 min  
Response: 330592294  
Conc: 49.51 ng/ml



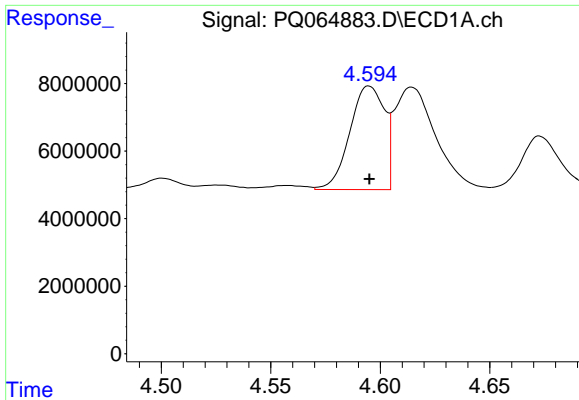
#2 Decachlorobiphenyl

R.T.: 8.774 min  
Delta R.T.: -0.001 min  
Response: 141150389  
Conc: 45.67 ng/ml



#2 Decachlorobiphenyl

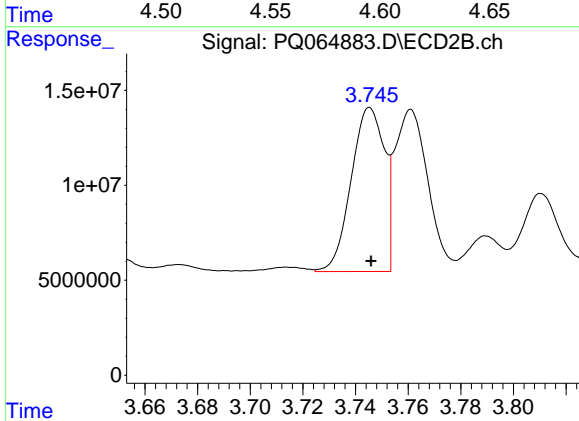
R.T.: 7.525 min  
Delta R.T.: -0.006 min  
Response: 345842531  
Conc: 47.59 ng/ml



#21 AR-1248-1

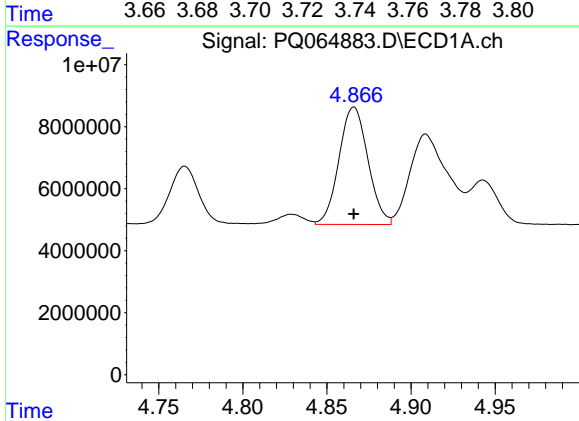
R.T.: 4.595 min  
 Delta R.T.: 0.000 min  
 Response: 33651558  
 Conc: 433.60 ng/ml

Instrument :  
 ECD\_Q  
 ClientSampleId :  
 AR1248CCC500



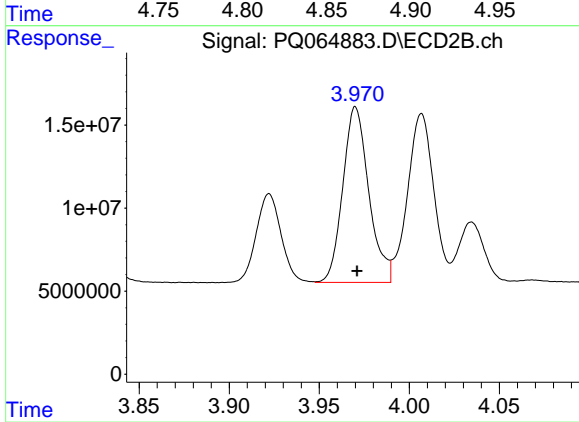
#21 AR-1248-1

R.T.: 3.745 min  
 Delta R.T.: 0.000 min  
 Response: 75264946  
 Conc: 448.33 ng/ml



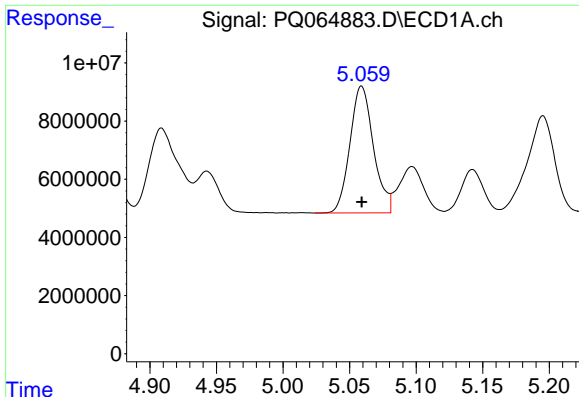
#22 AR-1248-2

R.T.: 4.866 min  
 Delta R.T.: 0.000 min  
 Response: 45366602  
 Conc: 438.85 ng/ml



#22 AR-1248-2

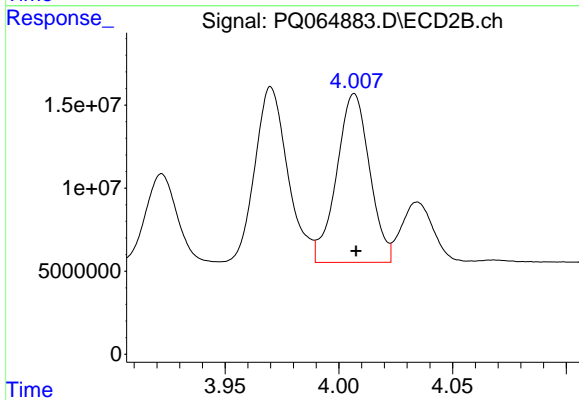
R.T.: 3.970 min  
 Delta R.T.: 0.000 min  
 Response: 106115098  
 Conc: 452.78 ng/ml



#23 AR-1248-3

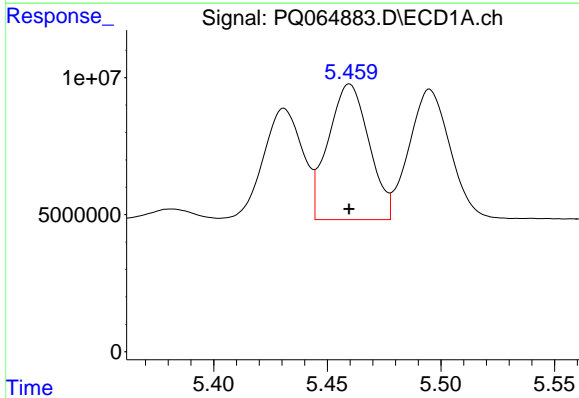
R.T.: 5.059 min  
 Delta R.T.: 0.000 min  
 Response: 53639968  
 Conc: 441.44 ng/ml

Instrument :  
 ECD\_Q  
 ClientSampleId :  
 AR1248CCC500



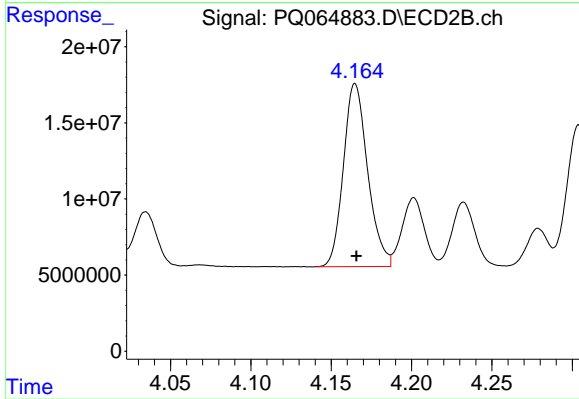
#23 AR-1248-3

R.T.: 4.007 min  
 Delta R.T.: 0.000 min  
 Response: 102542151  
 Conc: 456.04 ng/ml



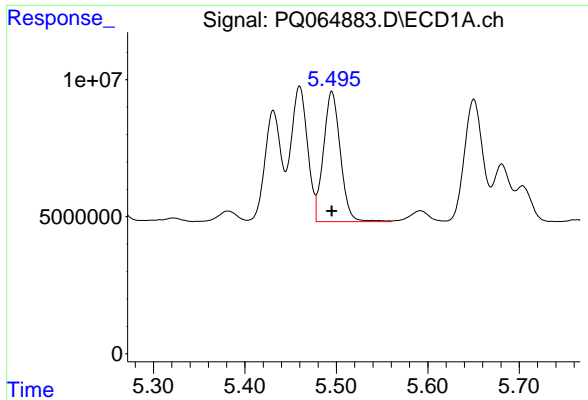
#24 AR-1248-4

R.T.: 5.460 min  
 Delta R.T.: 0.000 min  
 Response: 61817210  
 Conc: 433.80 ng/ml



#24 AR-1248-4

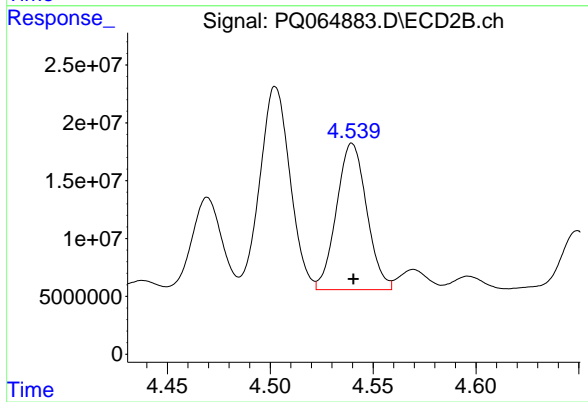
R.T.: 4.165 min  
 Delta R.T.: 0.000 min  
 Response: 126305436  
 Conc: 453.15 ng/ml



#25 AR-1248-5

R.T.: 5.495 min  
Delta R.T.: 0.000 min  
Response: 60914226  
Conc: 432.40 ng/ml

Instrument :  
ECD\_Q  
ClientSampleId :  
AR1248CCC500



#25 AR-1248-5

R.T.: 4.540 min  
Delta R.T.: 0.000 min  
Response: 129218155  
Conc: 451.67 ng/ml