

Data Path : Z:\pestpcbsrv\HPCHEM1\ECD_Q\Data\PQ012224\
 Data File : PQ064923.D
 Signal(s) : Signal #1: ECD1A.ch Signal #2: ECD2B.ch
 Acq On : 22 Jan 2024 21:48
 Operator : YP\AJ
 Sample : PB158551BSD
 Misc :
 ALS Vial : 34 Sample Multiplier: 1

Instrument :
 ECD_Q
ClientSampleId :
 PB158551BSD

Manual Integrations
APPROVED

Reviewed By :Ankita Jodhani 01/23/2024
 Supervised By :Sohil Jodhani 01/23/2024

Integration File signal 1: autoint1.e
 Integration File signal 2: autoint2.e
 Quant Time: Jan 23 00:46:07 2024
 Quant Method : Z:\pestpcbsrv\HPCHEM1\ECD_Q\Method\PQ011724.M
 Quant Title : GC EXTRACTABLES
 QLast Update : Thu Jan 18 00:09:27 2024
 Response via : Initial Calibration
 Integrator: ChemStation

Volume Inj. : 2 µl
 Signal #1 Phase : ZB-MR1 Signal #2 Phase: ZB-MR2
 Signal #1 Info : 30Mx0.32mmx 0.50µ Signal #2 Info : 30M x 0.32mm x 0.25µm

| Compound | RT#1 | RT#2 | Resp#1 | Resp#2 | ng/ml | ng/ml |
|-----------------------------|-------|-------|----------|----------|----------|-----------|
| ----- | | | | | | |
| System Monitoring Compounds | | | | | | |
| 1) SA Tetrachlo... | 3.463 | 2.744 | 77871300 | 151.7E6 | 20.903 | 22.723 |
| 2) SA Decachlor... | 8.753 | 7.522 | 64504360 | 168.2E6 | 20.872 | 23.140m |
| Target Compounds | | | | | | |
| 3) L1 AR-1016-1 | 4.583 | 3.745 | 45907226 | 100.7E6 | 380.475m | 403.272 |
| 4) L1 AR-1016-2 | 4.602 | 3.760 | 66111839 | 142.5E6 | 384.187 | 414.116 |
| 5) L1 AR-1016-3 | 4.661 | 3.921 | 41858306 | 78328415 | 380.946 | 409.173 |
| 6) L1 AR-1016-4 | 4.754 | 3.970 | 34281829 | 65871704 | 373.951 | 409.488 |
| 7) L1 AR-1016-5 | 5.046 | 4.165 | 32867848 | 80587044 | 373.603 | 405.791 |
| 31) L7 AR-1260-1 | 6.167 | 5.160 | 65389317 | 164.0E6 | 371.324 | 407.530 |
| 32) L7 AR-1260-2 | 6.432 | 5.350 | 76127722 | 196.9E6 | 333.253m | 402.569 |
| 33) L7 AR-1260-3 | 6.793 | 5.491 | 50357314 | 187.6E6 | 313.639 | 392.204 # |
| 34) L7 AR-1260-4 | 7.014 | 5.955 | 59095382 | 139.5E6 | 332.295 | 358.551 |
| 35) L7 AR-1260-5 | 7.332 | 6.201 | 115.7E6 | 315.8E6 | 315.167m | 361.889 |

(f)=RT Delta > 1/2 Window (#)=Amounts differ by > 25% (m)=manual int.

Data Path : Z:\pestpcbsrv\HPCHEM1\ECD_Q\Data\PQ012224\
 Data File : PQ064923.D
 Signal(s) : Signal #1: ECD1A.ch Signal #2: ECD2B.ch
 Acq On : 22 Jan 2024 21:48
 Operator : YP\AJ
 Sample : PB158551BSD
 Misc :
 ALS Vial : 34 Sample Multiplier: 1

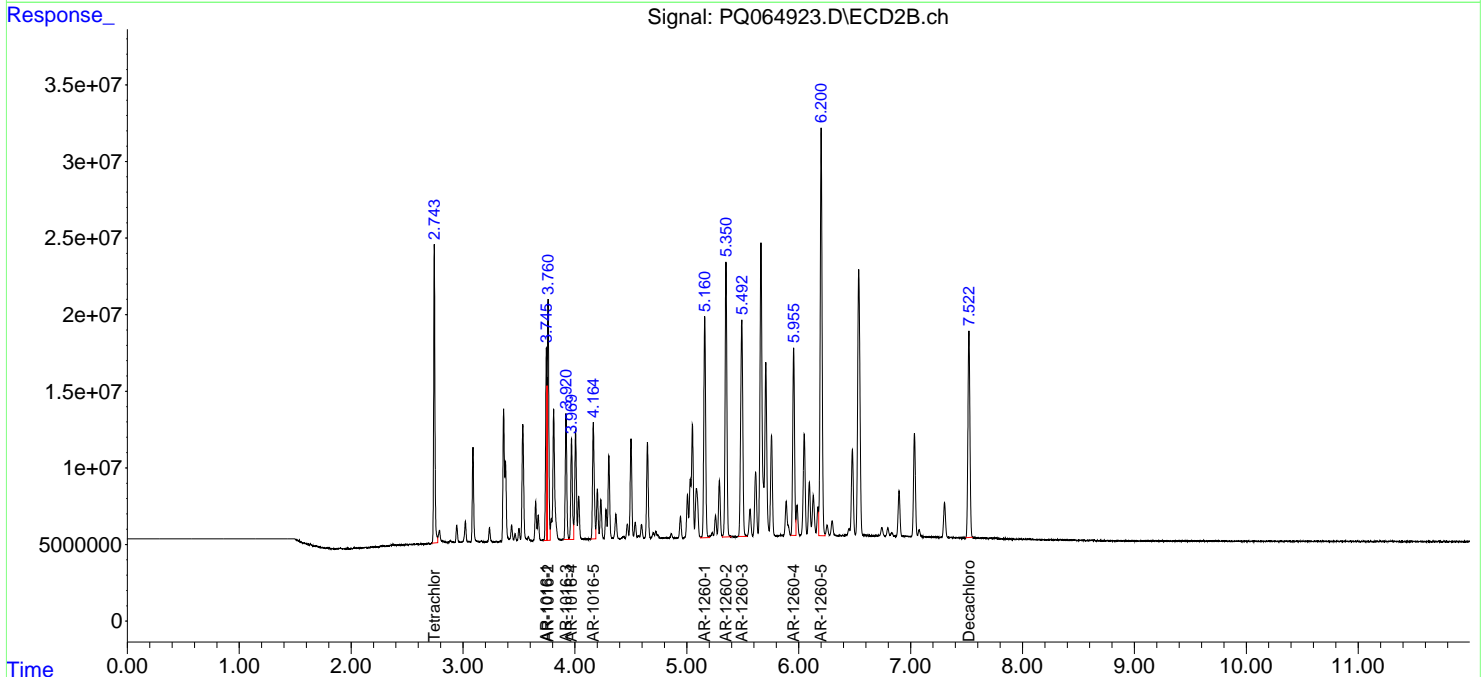
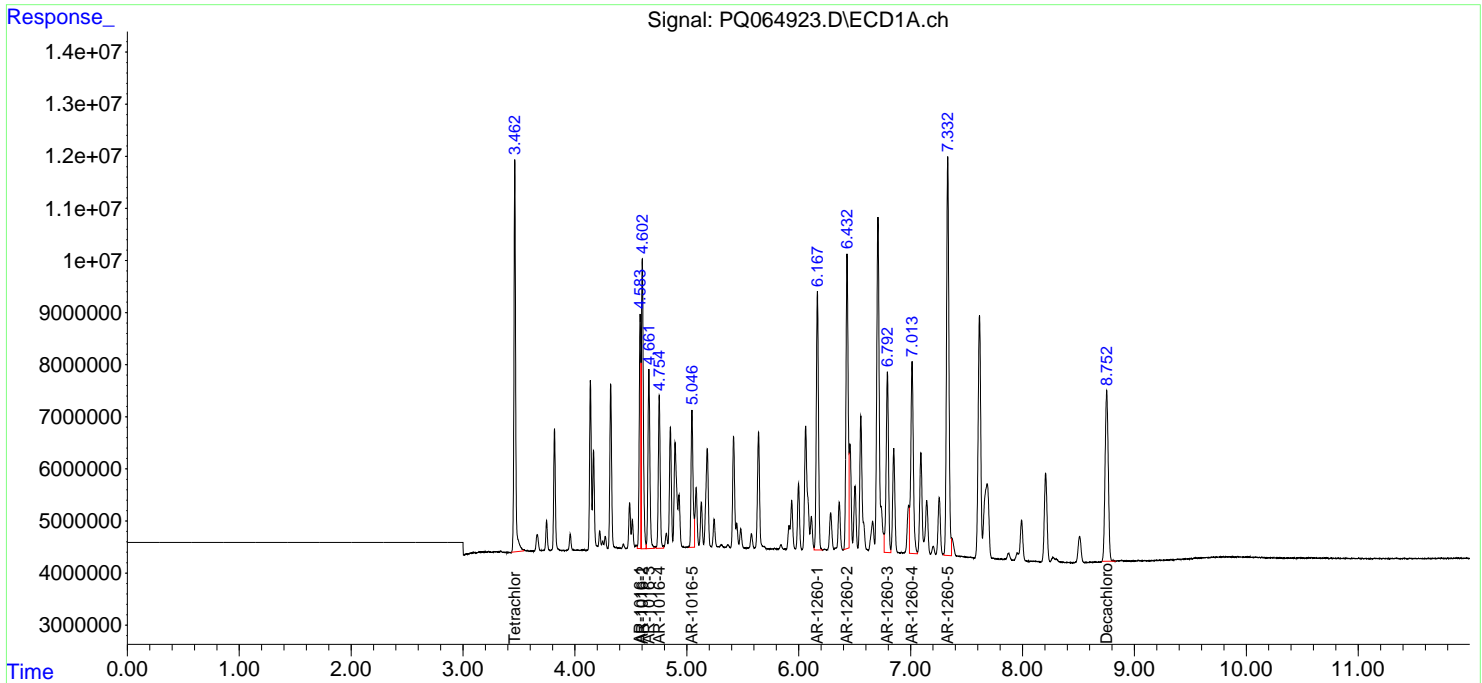
Instrument :
 ECD_Q
ClientSampleId :
 PB158551BSD

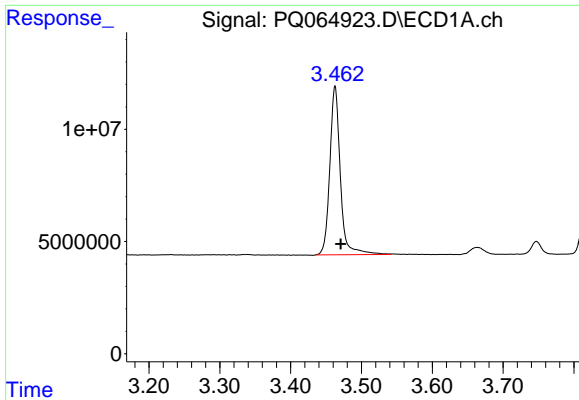
Manual Integrations
APPROVED

Reviewed By :Ankita Jodhani 01/23/2024
 Supervised By :Sohil Jodhani 01/23/2024

Integration File signal 1: autoint1.e
 Integration File signal 2: autoint2.e
 Quant Time: Jan 23 00:46:07 2024
 Quant Method : Z:\pestpcbsrv\HPCHEM1\ECD_Q\Method\PQ011724.M
 Quant Title : GC EXTRACTABLES
 QLast Update : Thu Jan 18 00:09:27 2024
 Response via : Initial Calibration
 Integrator: ChemStation

Volume Inj. : 2 µl
 Signal #1 Phase : ZB-MR1 Signal #2 Phase: ZB-MR2
 Signal #1 Info : 30Mx0.32mmx 0.50µ Signal #2 Info : 30M x 0.32mm x 0.25µm





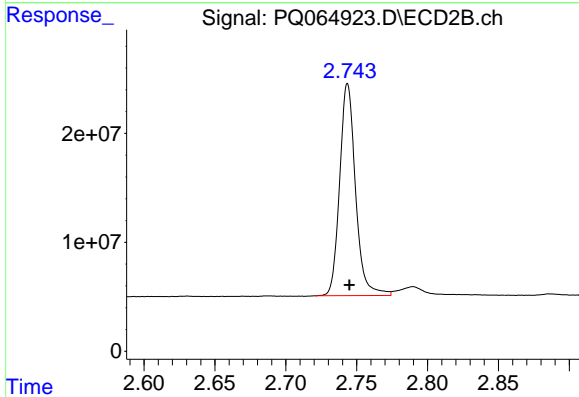
#1 Tetrachloro-m-xylene

R.T.: 3.463 min
 Delta R.T.: -0.008 min
 Response: 77871300
 Conc: 20.90 ng/ml

Instrument :
 ECD_Q
 ClientSampleId :
 PB158551BSD

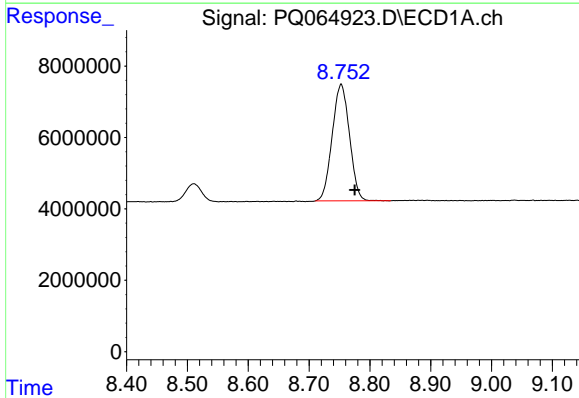
Manual Integrations
 APPROVED

Reviewed By :Ankita Jodhani 01/23/2024
 Supervised By :Sohil Jodhani 01/23/2024



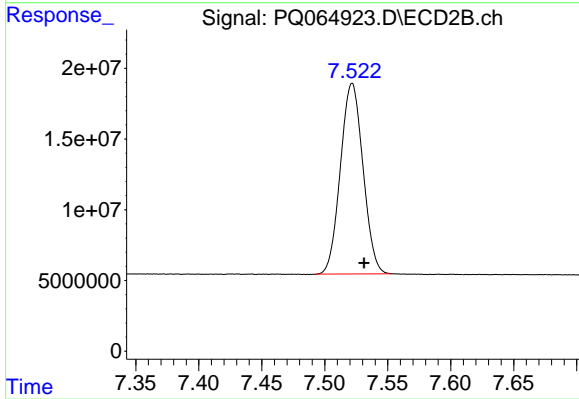
#1 Tetrachloro-m-xylene

R.T.: 2.744 min
 Delta R.T.: -0.001 min
 Response: 151733374
 Conc: 22.72 ng/ml



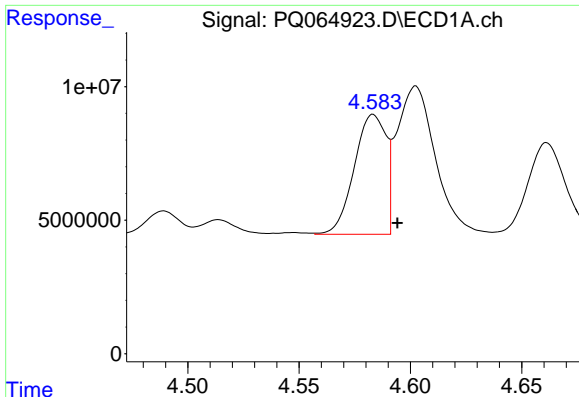
#2 Decachlorobiphenyl

R.T.: 8.753 min
 Delta R.T.: -0.022 min
 Response: 64504360
 Conc: 20.87 ng/ml



#2 Decachlorobiphenyl

R.T.: 7.522 min
 Delta R.T.: -0.010 min
 Response: 168171756
 Conc: 23.14 ng/ml m



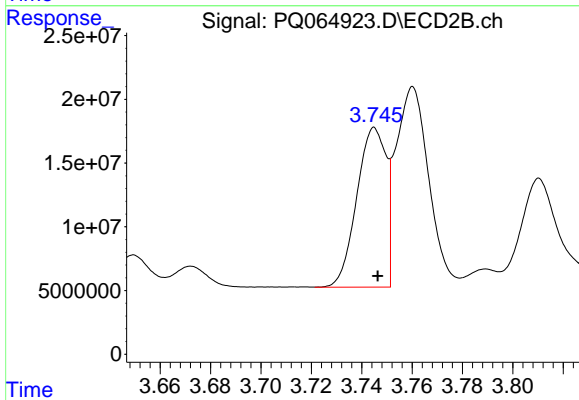
#3 AR-1016-1

R.T.: 4.583 min
 Delta R.T.: -0.011 min
 Response: 45907226
 Conc: 380.48 ng/ml

Instrument :
 ECD_Q
 ClientSampleId :
 PB158551BSD

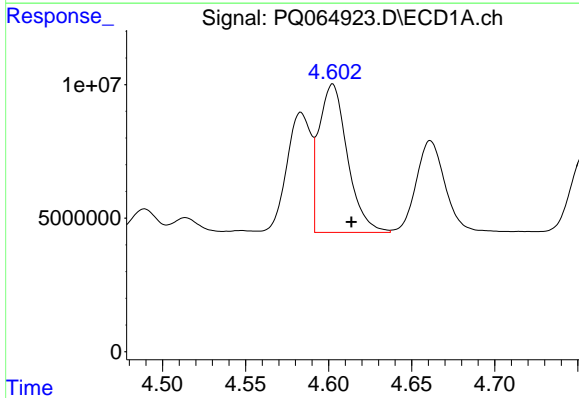
Manual Integrations
 APPROVED

Reviewed By :Ankita Jodhani 01/23/2024
 Supervised By :Sohil Jodhani 01/23/2024



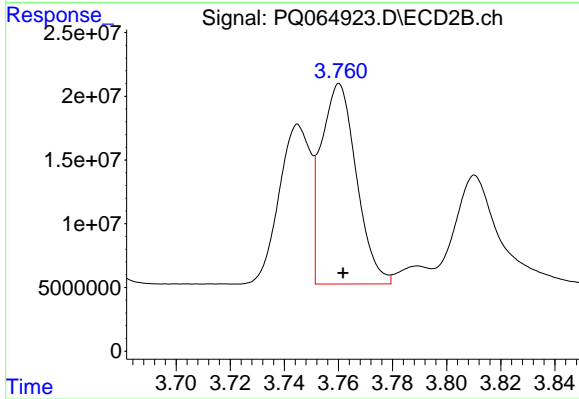
#3 AR-1016-1

R.T.: 3.745 min
 Delta R.T.: -0.001 min
 Response: 100708159
 Conc: 403.27 ng/ml



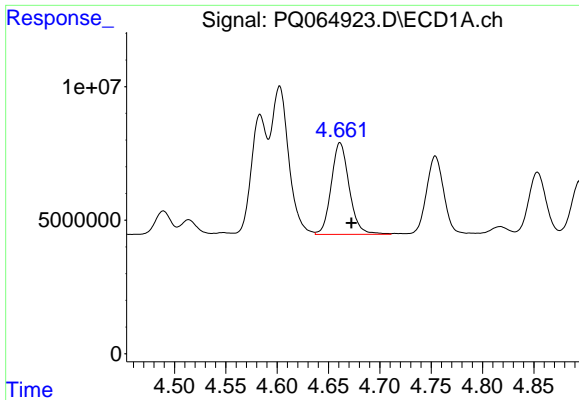
#4 AR-1016-2

R.T.: 4.602 min
 Delta R.T.: -0.011 min
 Response: 66111839
 Conc: 384.19 ng/ml



#4 AR-1016-2

R.T.: 3.760 min
 Delta R.T.: -0.001 min
 Response: 142518988
 Conc: 414.12 ng/ml



#5 AR-1016-3

R.T.: 4.661 min
 Delta R.T.: -0.011 min
 Response: 41858306
 Conc: 380.95 ng/ml

Instrument :

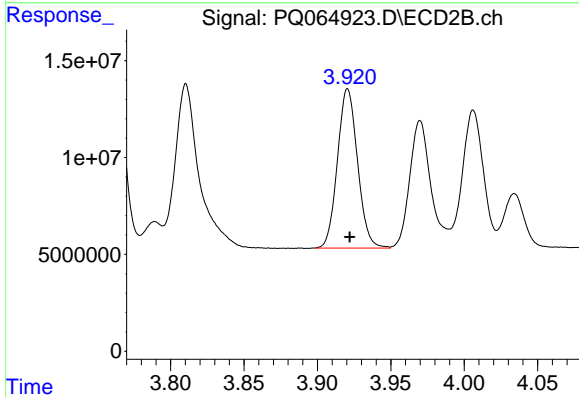
ECD_Q

ClientSampleId :

PB158551BSD

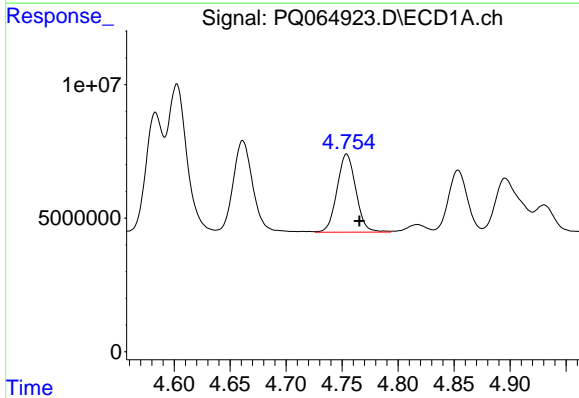
Manual Integrations
 APPROVED

Reviewed By :Ankita Jodhani 01/23/2024
 Supervised By :Sohil Jodhani 01/23/2024



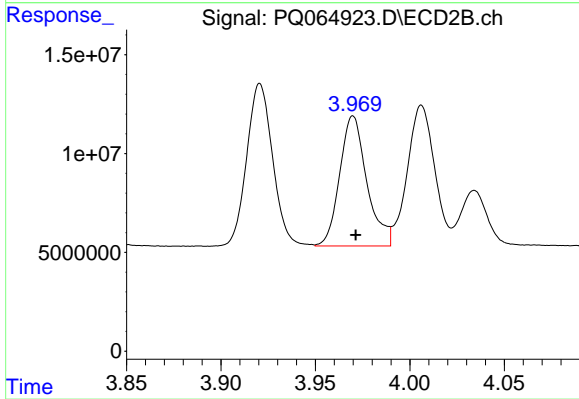
#5 AR-1016-3

R.T.: 3.921 min
 Delta R.T.: -0.001 min
 Response: 78328415
 Conc: 409.17 ng/ml



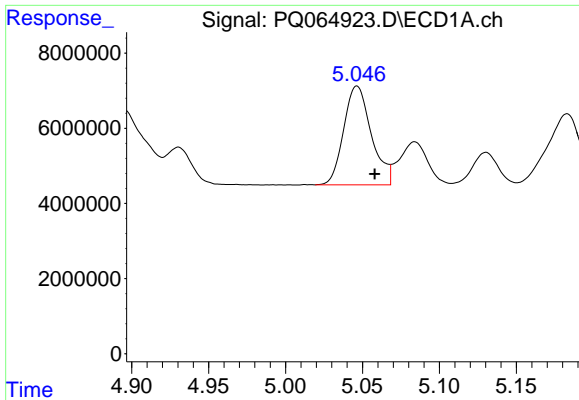
#6 AR-1016-4

R.T.: 4.754 min
 Delta R.T.: -0.011 min
 Response: 34281829
 Conc: 373.95 ng/ml



#6 AR-1016-4

R.T.: 3.970 min
 Delta R.T.: -0.001 min
 Response: 65871704
 Conc: 409.49 ng/ml



#7 AR-1016-5

R.T.: 5.046 min
 Delta R.T.: -0.011 min
 Response: 32867848
 Conc: 373.60 ng/ml

Instrument :

ECD_Q

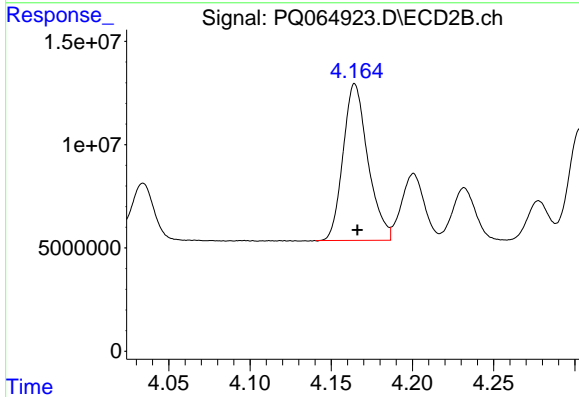
ClientSampleId :

PB158551BSD

Manual Integrations

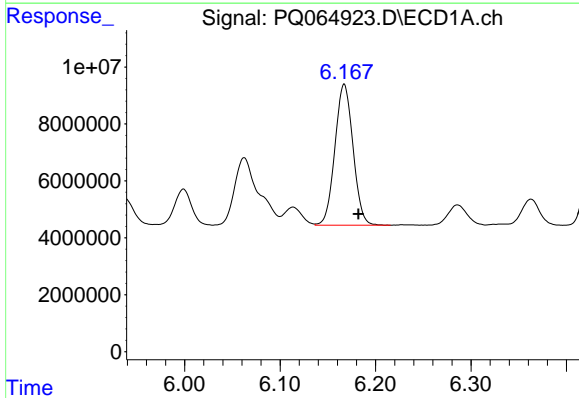
APPROVED

Reviewed By :Ankita Jodhani 01/23/2024
 Supervised By :Sohil Jodhani 01/23/2024



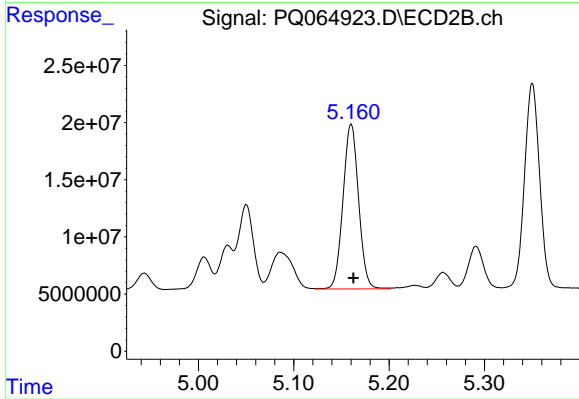
#7 AR-1016-5

R.T.: 4.165 min
 Delta R.T.: -0.002 min
 Response: 80587044
 Conc: 405.79 ng/ml



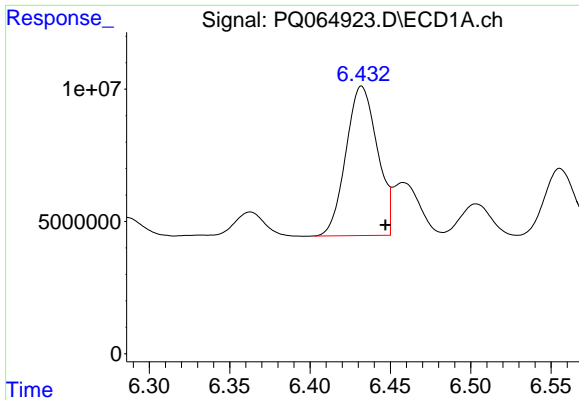
#31 AR-1260-1

R.T.: 6.167 min
 Delta R.T.: -0.015 min
 Response: 65389317
 Conc: 371.32 ng/ml



#31 AR-1260-1

R.T.: 5.160 min
 Delta R.T.: -0.003 min
 Response: 164012095
 Conc: 407.53 ng/ml



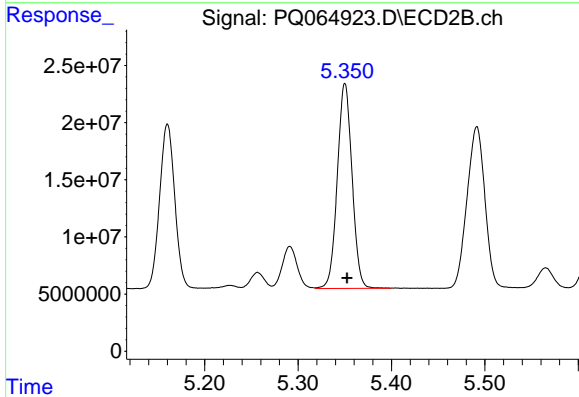
#32 AR-1260-2

R.T.: 6.432 min
 Delta R.T.: -0.015 min
 Response: 76127722
 Conc: 333.25 ng/ml

Instrument :
 ECD_Q
 ClientSampleId :
 PB158551BSD

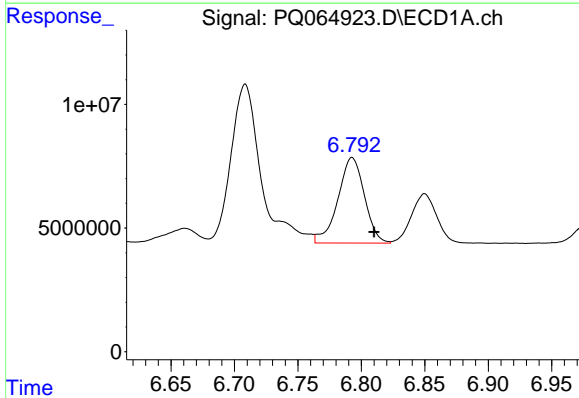
Manual Integrations
 APPROVED

Reviewed By :Ankita Jodhani 01/23/2024
 Supervised By :Sohil Jodhani 01/23/2024



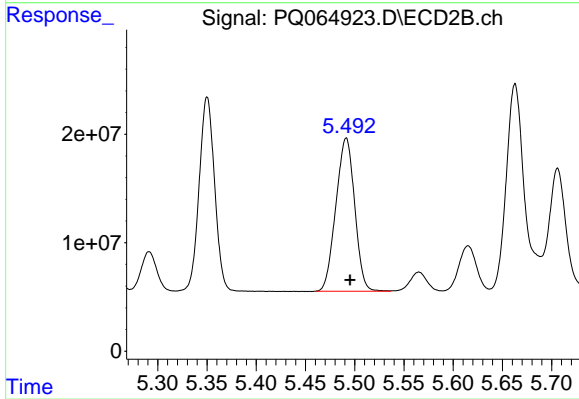
#32 AR-1260-2

R.T.: 5.350 min
 Delta R.T.: -0.002 min
 Response: 196877474
 Conc: 402.57 ng/ml



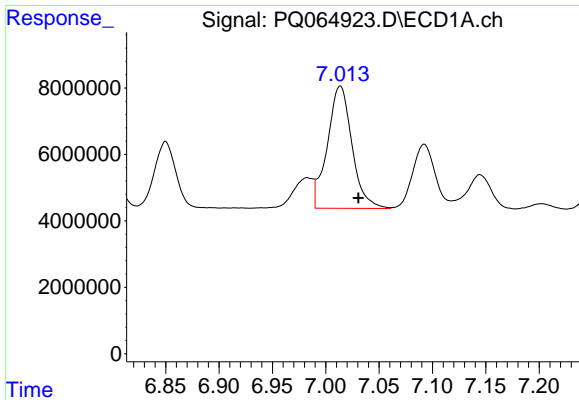
#33 AR-1260-3

R.T.: 6.793 min
 Delta R.T.: -0.017 min
 Response: 50357314
 Conc: 313.64 ng/ml



#33 AR-1260-3

R.T.: 5.491 min
 Delta R.T.: -0.004 min
 Response: 187600147
 Conc: 392.20 ng/ml



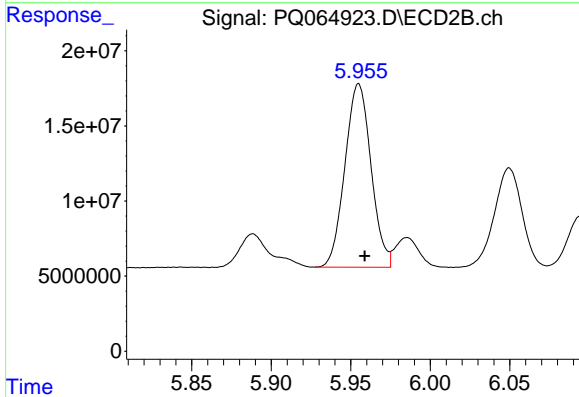
#34 AR-1260-4

R.T.: 7.014 min
 Delta R.T.: -0.017 min
 Response: 59095382
 Conc: 332.29 ng/ml

Instrument :
 ECD_Q
 ClientSampleId :
 PB158551BSD

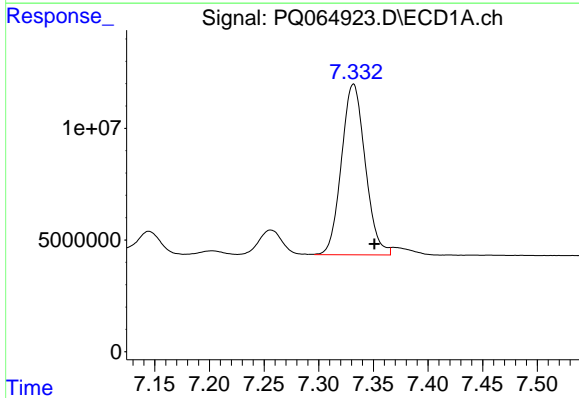
Manual Integrations
 APPROVED

Reviewed By :Ankita Jodhani 01/23/2024
 Supervised By :Sohil Jodhani 01/23/2024



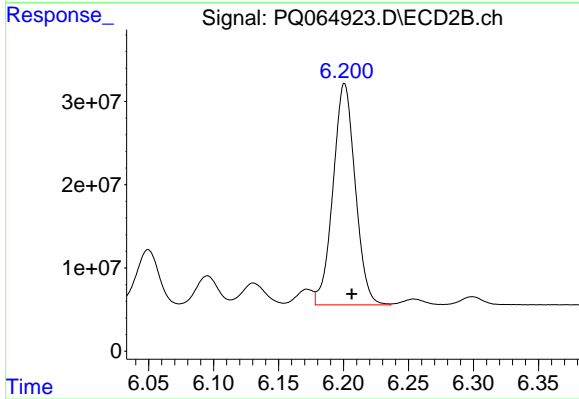
#34 AR-1260-4

R.T.: 5.955 min
 Delta R.T.: -0.004 min
 Response: 139516967
 Conc: 358.55 ng/ml



#35 AR-1260-5

R.T.: 7.332 min
 Delta R.T.: -0.019 min
 Response: 115706720
 Conc: 315.17 ng/ml m



#35 AR-1260-5

R.T.: 6.201 min
 Delta R.T.: -0.005 min
 Response: 315837487
 Conc: 361.89 ng/ml