

Data Path : Z:\pestpcbsrv\HPCHEM1\ECD_Q\Data\PQ012319\
 Data File : PQ036643.D
 Signal(s) : Signal #1: ECD1A.ch Signal #2: ECD2B.ch
 Acq On : 23 Jan 2019 09:29
 Operator : SM\SJ
 Sample : K1157-01
 Misc :
 ALS Vial : 7 Sample Multiplier: 1

Instrument :
 ECD_Q
ClientSampleId :
 WC-01-011519

Manual Integrations
APPROVED
 Sohil
 1/24/2019 8:18:22 AM

Integration File signal 1: autoint1.e
 Integration File signal 2: autoint2.e
 Quant Time: Jan 24 00:50:06 2019
 Quant Method : Z:\pestpcbsrv\HPCHEM1\ECD_Q\Method\PQ010819.M
 Quant Title : GC EXTRACTABLES
 QLast Update : Wed Jan 09 07:07:45 2019
 Response via : Initial Calibration
 Integrator: ChemStation

Volume Inj. : 2 µl
 Signal #1 Phase : ZB-MR1 Signal #2 Phase: ZB-MR2
 Signal #1 Info : 30Mx0.32mmx 0.50µ Signal #2 Info : 30M x 0.32mm x 0.25µm

Compound	RT#1	RT#2	Resp#1	Resp#2	ng/ml	ng/ml

System Monitoring Compounds						
1) SA Tetrachlo...	4.357	3.710	69631795	38704510	15.232m	15.990
2) SA Decachlor...	9.968	8.652	39355039	19599083	10.819m	10.195m

Target Compounds

(f)=RT Delta > 1/2 Window (#)=Amounts differ by > 25% (m)=manual int.

Data Path : Z:\pestpcbsrv\HPCHEM1\ECD_Q\Data\PQ012319\
 Data File : PQ036643.D
 Signal(s) : Signal #1: ECD1A.ch Signal #2: ECD2B.ch
 Acq On : 23 Jan 2019 09:29
 Operator : SM\SJ
 Sample : K1157-01
 Misc :
 ALS Vial : 7 Sample Multiplier: 1

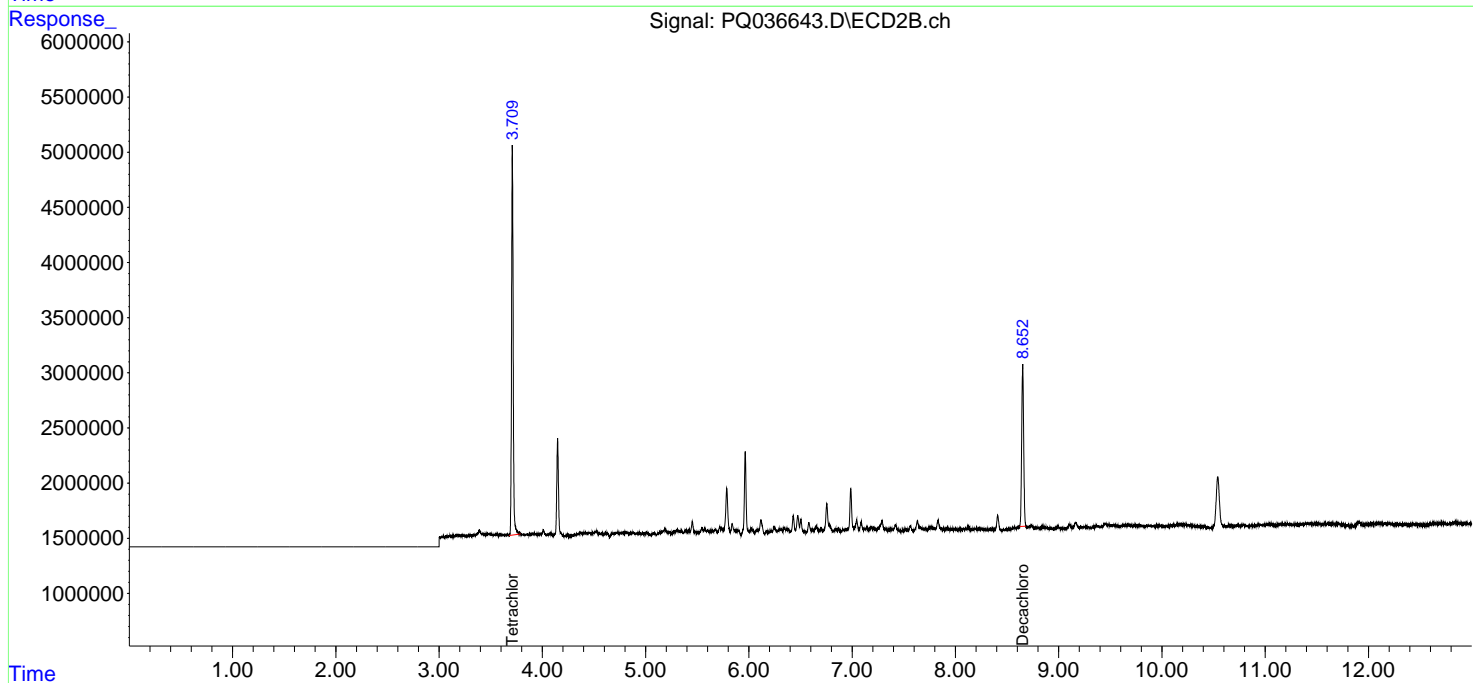
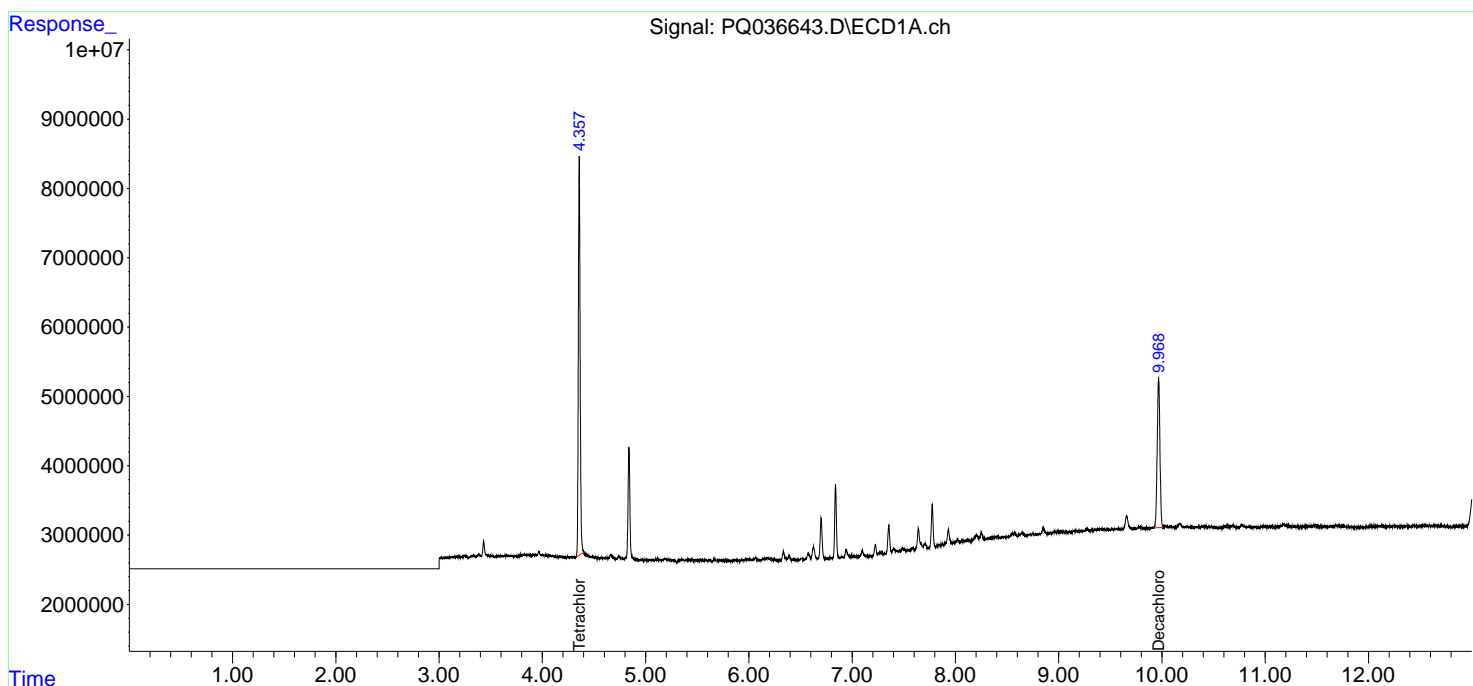
Instrument :
 ECD_Q
 ClientSampleId :
 WC-01-011519

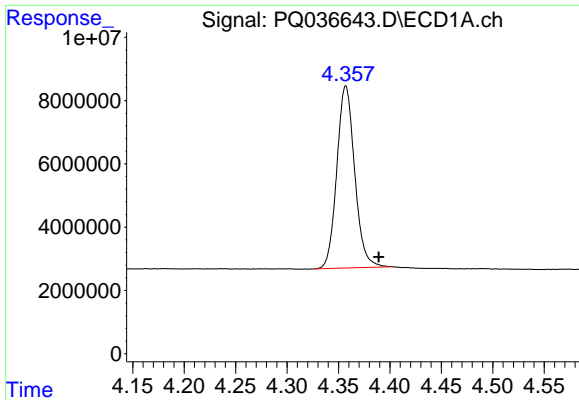
Manual Integrations
 APPROVED

Sohil
 1/24/2019 8:18:22 AM

Integration File signal 1: autoint1.e
 Integration File signal 2: autoint2.e
 Quant Time: Jan 24 00:50:06 2019
 Quant Method : Z:\pestpcbsrv\HPCHEM1\ECD_Q\Method\PQ010819.M
 Quant Title : GC EXTRACTABLES
 QLast Update : Wed Jan 09 07:07:45 2019
 Response via : Initial Calibration
 Integrator: ChemStation

Volume Inj. : 2 µl
 Signal #1 Phase : ZB-MR1 Signal #2 Phase: ZB-MR2
 Signal #1 Info : 30Mx0.32mmx 0.50µm Signal #2 Info : 30M x 0.32mm x 0.25µm

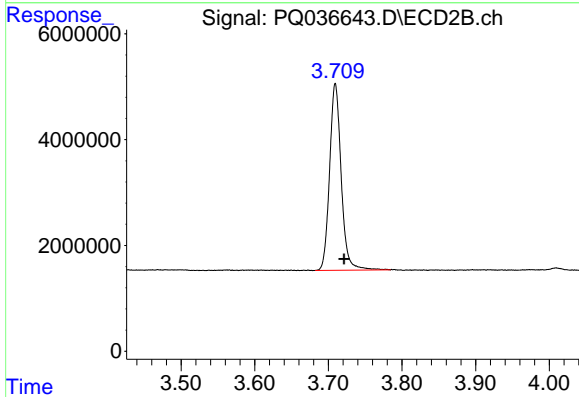




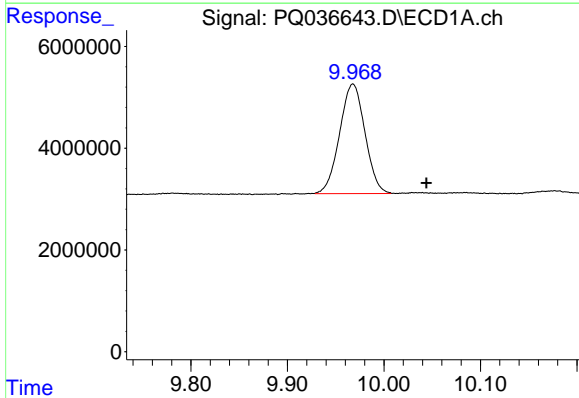
#1 Tetrachloro-m-xylene
 R.T.: 4.357 min
 Delta R.T.: -0.032 min
 Response: 69631795
 Conc: 15.23 ng/ml m

Instrument :
 ECD_Q
 ClientSampled :
 WC-01-011519

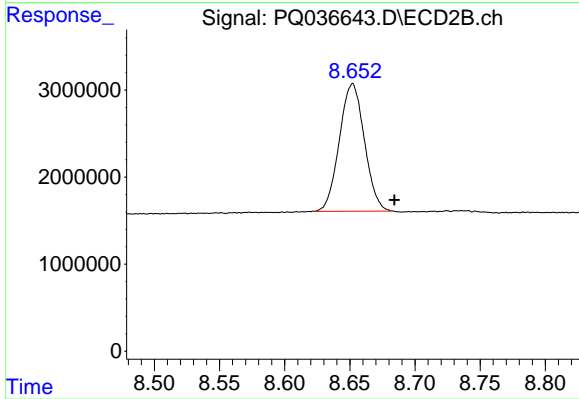
Manual Integrations
 APPROVED
 Sohil
 1/24/2019 8:18:22 AM



#1 Tetrachloro-m-xylene
 R.T.: 3.710 min
 Delta R.T.: -0.012 min
 Response: 38704510
 Conc: 15.99 ng/ml



#2 Decachlorobiphenyl
 R.T.: 9.968 min
 Delta R.T.: -0.076 min
 Response: 39355039
 Conc: 10.82 ng/ml m



#2 Decachlorobiphenyl
 R.T.: 8.652 min
 Delta R.T.: -0.032 min
 Response: 19599083
 Conc: 10.19 ng/ml m