

Data Path : Z:\pestpcbsrv\HPCHEM1\ECD_Q\Data\PQ012319\
 Data File : PQ036647.D
 Signal(s) : Signal #1: ECD1A.ch Signal #2: ECD2B.ch
 Acq On : 23 Jan 2019 11:12
 Operator : SM\SJ
 Sample : AR1660CCC500
 Misc :
 ALS Vial : 3 Sample Multiplier: 1

Instrument :
 ECD_Q
ClientSampleId :
 AR1660CCC500

Manual Integrations
APPROVED
 Sohil
 1/24/2019 8:18:29 AM

Integration File signal 1: autoint1.e
 Integration File signal 2: autoint2.e
 Quant Time: Jan 24 00:51:23 2019
 Quant Method : Z:\pestpcbsrv\HPCHEM1\ECD_Q\Method\PQ010819.M
 Quant Title : GC EXTRACTABLES
 QLast Update : Wed Jan 09 07:07:45 2019
 Response via : Initial Calibration
 Integrator: ChemStation

Volume Inj. : 2 µl
 Signal #1 Phase : ZB-MR1 Signal #2 Phase: ZB-MR2
 Signal #1 Info : 30Mx0.32mmx 0.50µ Signal #2 Info : 30M x 0.32mm x 0.25µm

Compound	RT#1	RT#2	Resp#1	Resp#2	ng/ml	ng/ml

System Monitoring Compounds						
1) SA Tetrachlo...	4.376	3.711	242.2E6	130.2E6	52.969m	53.802m
2) SA Decachlor...	10.010	8.666	185.7E6	90833218	51.049m	47.249
Target Compounds						
3) L1 AR-1016-1	5.537	4.784	65299894	37967509	466.688	489.189
4) L1 AR-1016-2	5.559	4.802	96442862	53880298	451.790	473.101
5) L1 AR-1016-3	5.621	4.978	55787128	27808877	449.677	480.682
6) L1 AR-1016-4	5.720	5.017	45653383	21821152	450.847m	462.914
7) L1 AR-1016-5	6.010	5.230	44188651	27681233	442.517m	455.021
31) L7 AR-1260-1	7.128	6.249	81607524	52852381	428.635	443.857
32) L7 AR-1260-2	7.384	6.437	98890849	64944713	430.914	452.365
33) L7 AR-1260-3	7.740	6.589	61514055	59792903	436.858	452.846
34) L7 AR-1260-4	7.969	7.056	74816481	41407078	433.915	460.639
35) L7 AR-1260-5	8.284	7.298	153.8E6	104.0E6	458.080	470.929

(f)=RT Delta > 1/2 Window (#)=Amounts differ by > 25% (m)=manual int.

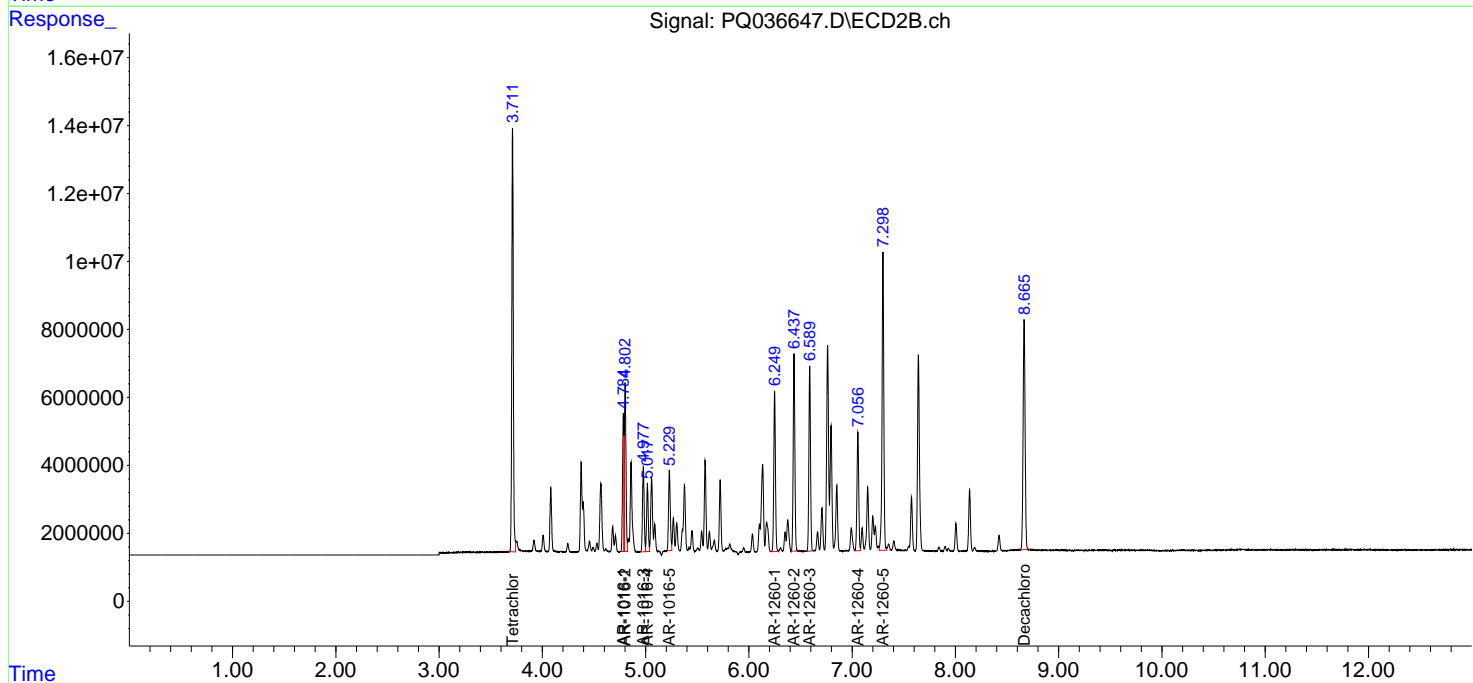
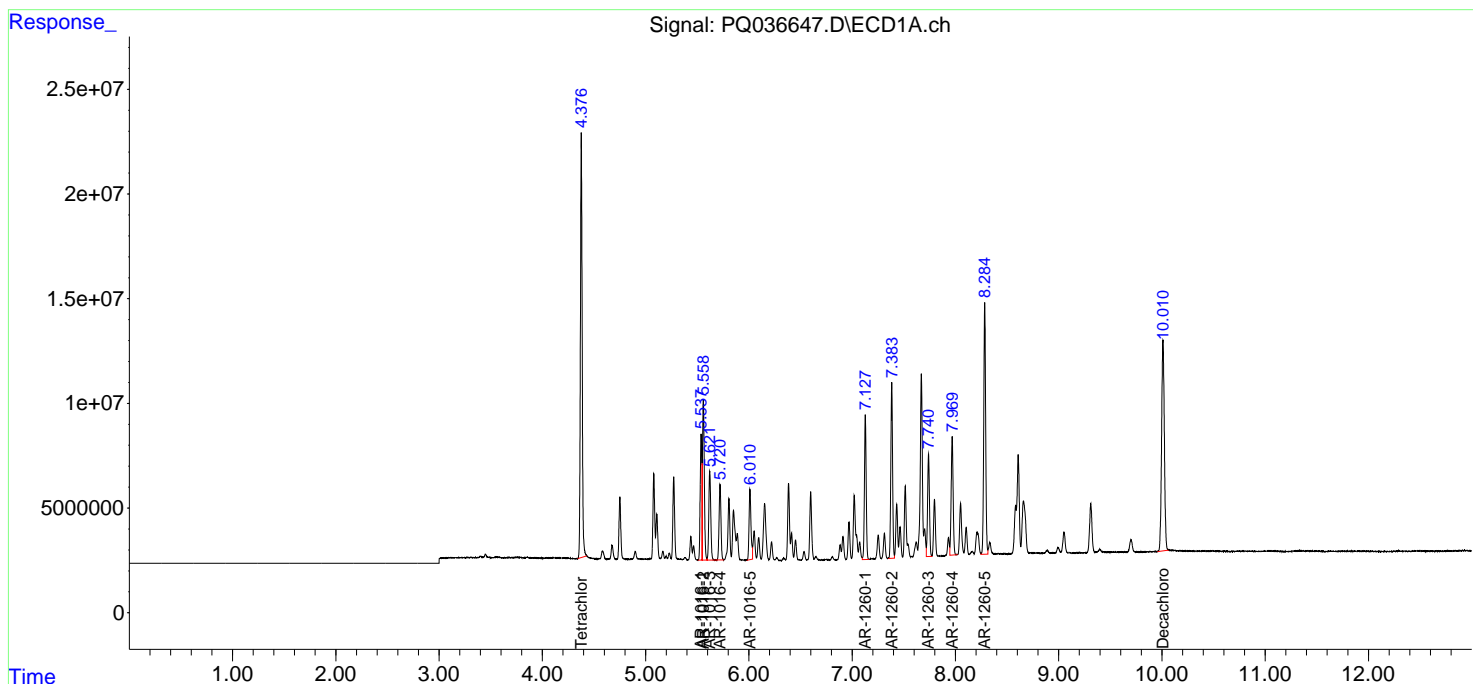
Data Path : Z:\pestpcbsrv\HPCHEM1\ECD_Q\Data\PQ012319\
 Data File : PQ036647.D
 Signal(s) : Signal #1: ECD1A.ch Signal #2: ECD2B.ch
 Acq On : 23 Jan 2019 11:12
 Operator : SM\SJ
 Sample : AR1660CCC500
 Misc :
 ALS Vial : 3 Sample Multiplier: 1

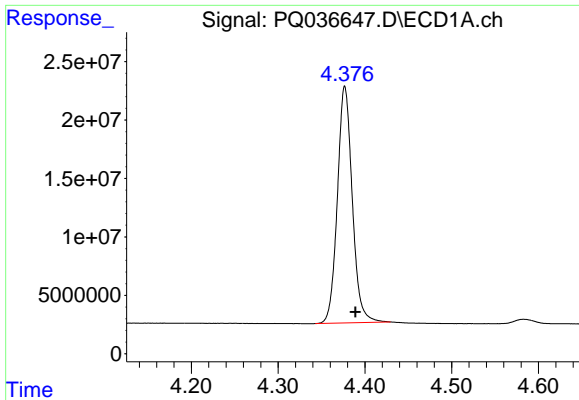
Instrument :
 ECD_Q
Client Sampled :
 AR1660CCC500

Manual Integrations
APPROVED
 Sohil
 1/24/2019 8:18:29 AM

Integration File signal 1: autoint1.e
 Integration File signal 2: autoint2.e
 Quant Time: Jan 24 00:51:23 2019
 Quant Method : Z:\pestpcbsrv\HPCHEM1\ECD_Q\Method\PQ010819.M
 Quant Title : GC EXTRACTABLES
 QLast Update : Wed Jan 09 07:07:45 2019
 Response via : Initial Calibration
 Integrator: ChemStation

Volume Inj. : 2 µl
 Signal #1 Phase : ZB-MR1 Signal #2 Phase: ZB-MR2
 Signal #1 Info : 30Mx0.32mmx 0.50µm Signal #2 Info : 30M x 0.32mm x 0.25µm





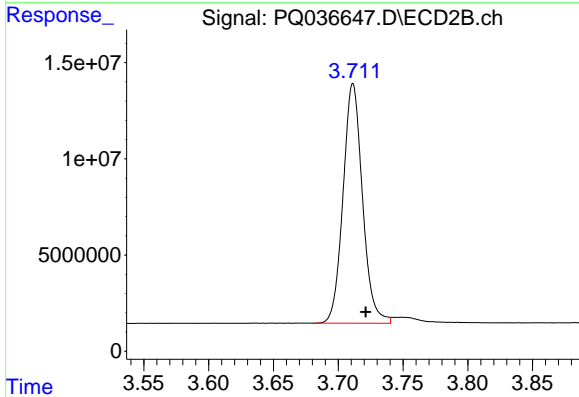
#1 Tetrachloro-m-xylene

R.T.: 4.376 min
Delta R.T.: -0.013 min
Response: 242150229
Conc: 52.97 ng/ml m

Instrument :
ECD_Q
ClientSampleId :
AR1660CCC500

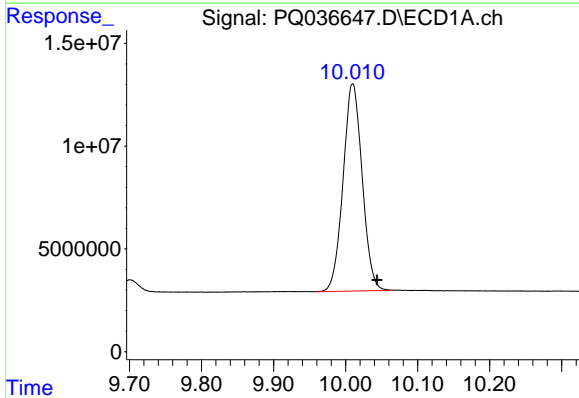
Manual Integrations
APPROVED

Sohil
1/24/2019 8:18:29 AM



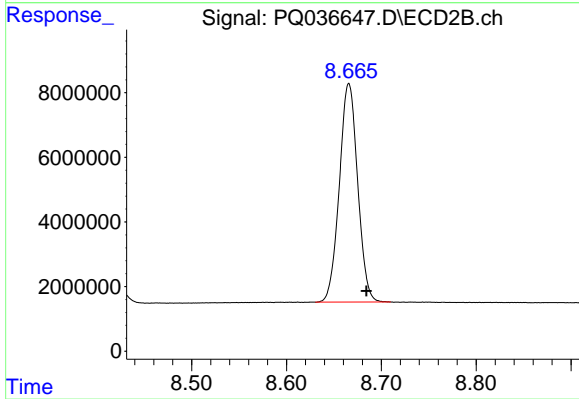
#1 Tetrachloro-m-xylene

R.T.: 3.711 min
Delta R.T.: -0.010 min
Response: 130225708
Conc: 53.80 ng/ml m



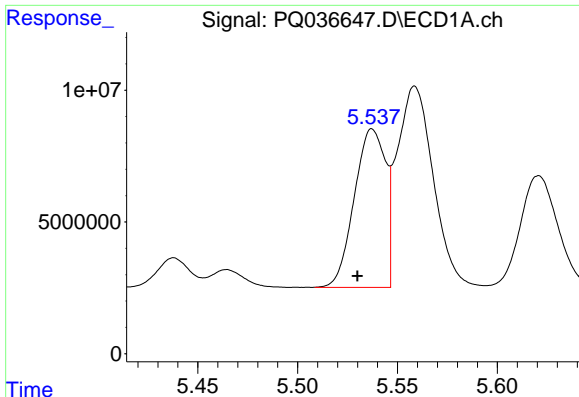
#2 Decachlorobiphenyl

R.T.: 10.010 min
Delta R.T.: -0.034 min
Response: 185687845
Conc: 51.05 ng/ml m



#2 Decachlorobiphenyl

R.T.: 8.666 min
Delta R.T.: -0.019 min
Response: 90833218
Conc: 47.25 ng/ml



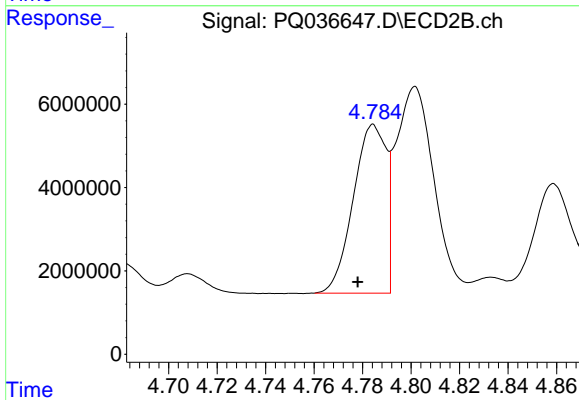
#3 AR-1016-1

R.T.: 5.537 min
 Delta R.T.: 0.007 min
 Response: 65299894
 Conc: 466.69 ng/ml

Instrument :
 ECD_Q
 ClientSampled :
 AR1660CCC500

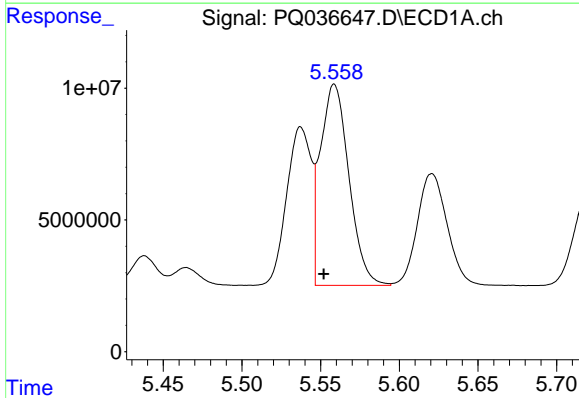
Manual Integrations
 APPROVED

Sohil
 1/24/2019 8:18:29 AM



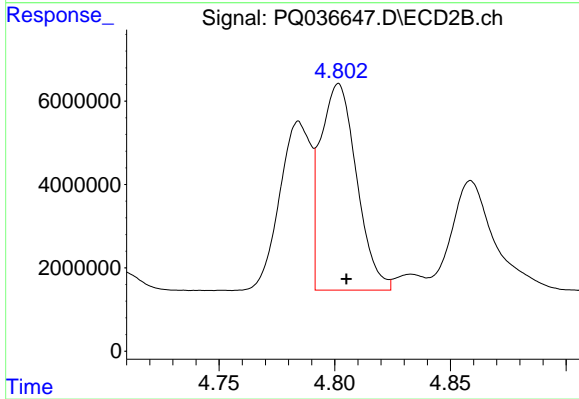
#3 AR-1016-1

R.T.: 4.784 min
 Delta R.T.: 0.006 min
 Response: 37967509
 Conc: 489.19 ng/ml



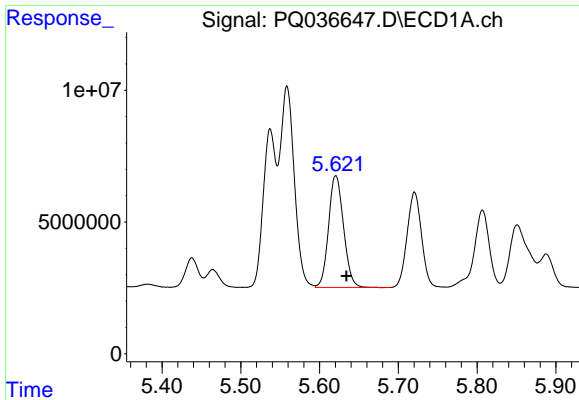
#4 AR-1016-2

R.T.: 5.559 min
 Delta R.T.: 0.007 min
 Response: 96442862
 Conc: 451.79 ng/ml



#4 AR-1016-2

R.T.: 4.802 min
 Delta R.T.: -0.003 min
 Response: 53880298
 Conc: 473.10 ng/ml

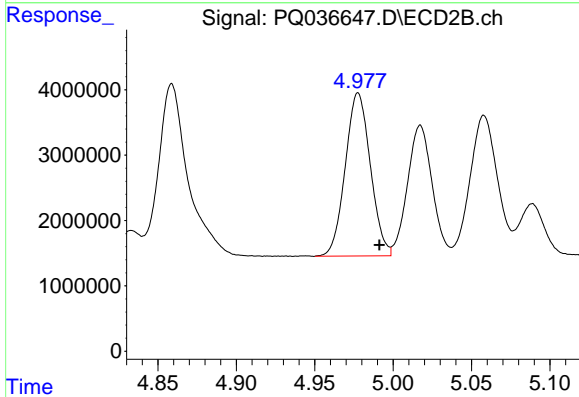


#5 AR-1016-3

R.T.: 5.621 min
 Delta R.T.: -0.013 min
 Response: 55787128
 Conc: 449.68 ng/ml

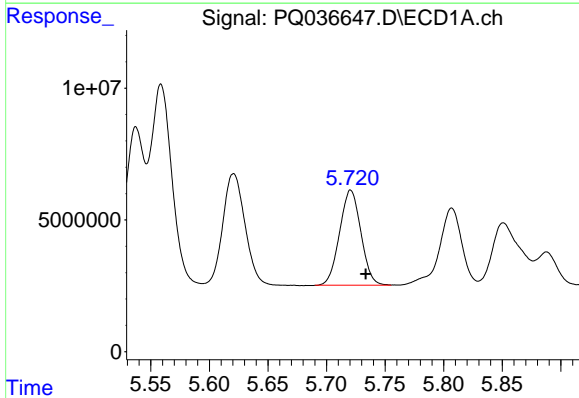
Instrument :
 ECD_Q
ClientSampled :
 AR1660CCC500

Manual Integrations
APPROVED
 Sohil
 1/24/2019 8:18:29 AM



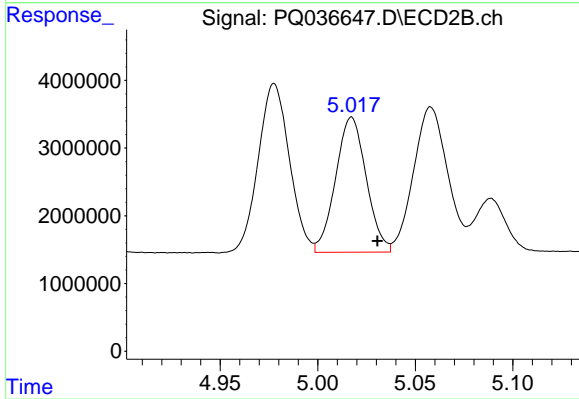
#5 AR-1016-3

R.T.: 4.978 min
 Delta R.T.: -0.013 min
 Response: 27808877
 Conc: 480.68 ng/ml



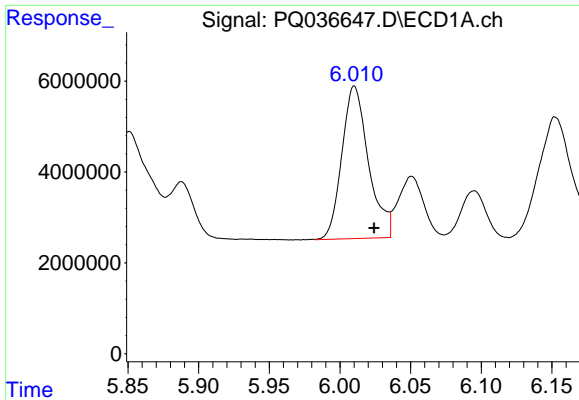
#6 AR-1016-4

R.T.: 5.720 min
 Delta R.T.: -0.014 min
 Response: 45653383
 Conc: 450.85 ng/ml m



#6 AR-1016-4

R.T.: 5.017 min
 Delta R.T.: -0.013 min
 Response: 21821152
 Conc: 462.91 ng/ml

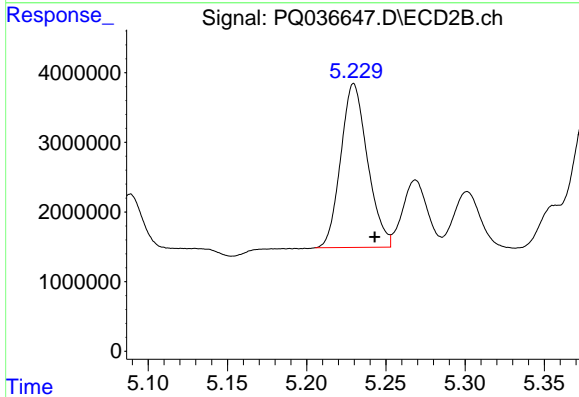


#7 AR-1016-5

R.T.: 6.010 min
 Delta R.T.: -0.014 min
 Response: 44188651
 Conc: 442.52 ng/ml m

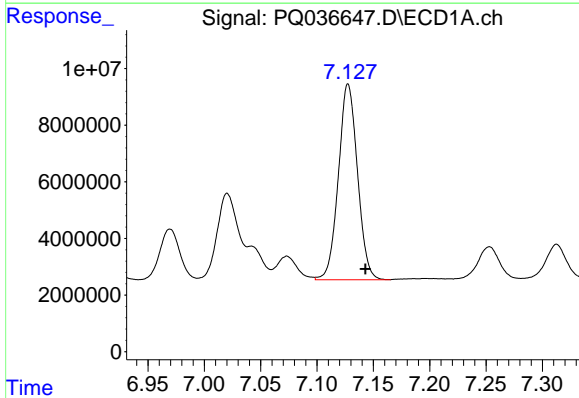
Instrument :
 ECD_Q
ClientSampled :
 AR1660CCC500

Manual Integrations
APPROVED
 Sohil
 1/24/2019 8:18:29 AM



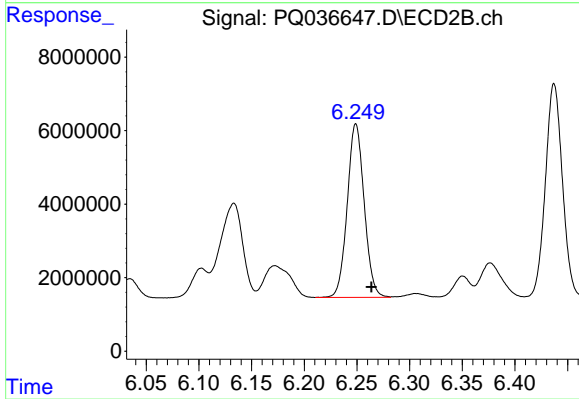
#7 AR-1016-5

R.T.: 5.230 min
 Delta R.T.: -0.013 min
 Response: 27681233
 Conc: 455.02 ng/ml



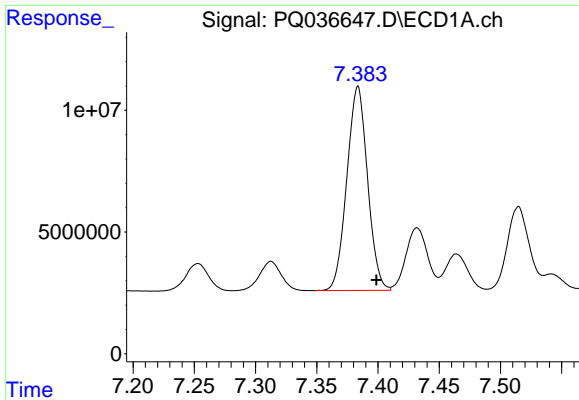
#31 AR-1260-1

R.T.: 7.128 min
 Delta R.T.: -0.015 min
 Response: 81607524
 Conc: 428.63 ng/ml



#31 AR-1260-1

R.T.: 6.249 min
 Delta R.T.: -0.015 min
 Response: 52852381
 Conc: 443.86 ng/ml

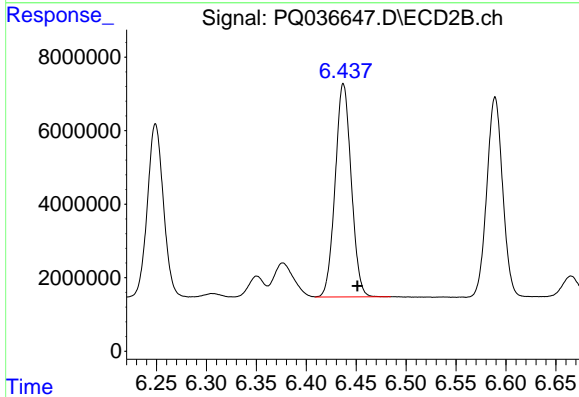


#32 AR-1260-2

R.T.: 7.384 min
 Delta R.T.: -0.015 min
 Response: 98890849
 Conc: 430.91 ng/ml

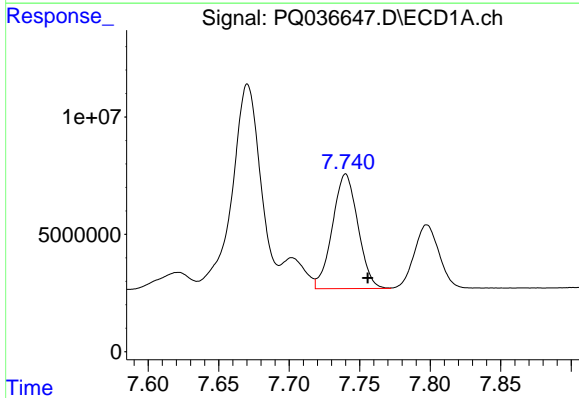
Instrument :
 ECD_Q
 ClientSampled :
 AR1660CCC500

Manual Integrations
 APPROVED
 Sohil
 1/24/2019 8:18:29 AM



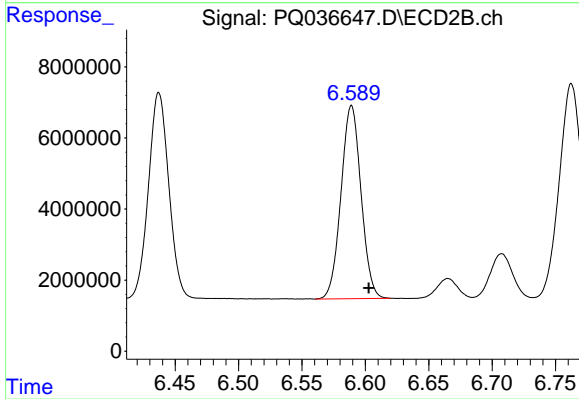
#32 AR-1260-2

R.T.: 6.437 min
 Delta R.T.: -0.014 min
 Response: 64944713
 Conc: 452.37 ng/ml



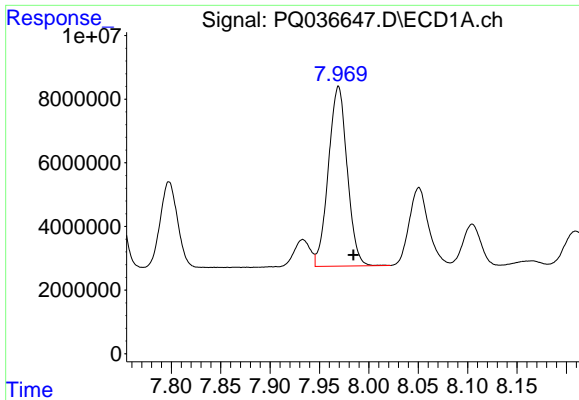
#33 AR-1260-3

R.T.: 7.740 min
 Delta R.T.: -0.016 min
 Response: 61514055
 Conc: 436.86 ng/ml



#33 AR-1260-3

R.T.: 6.589 min
 Delta R.T.: -0.014 min
 Response: 59792903
 Conc: 452.85 ng/ml



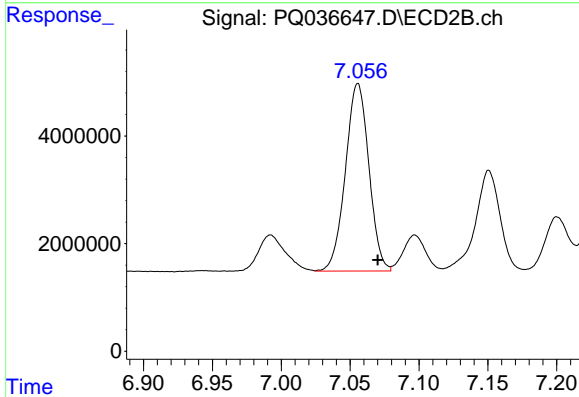
#34 AR-1260-4

R.T.: 7.969 min
Delta R.T.: -0.015 min
Response: 74816481
Conc: 433.91 ng/ml

Instrument :
ECD_Q
ClientSampled :
AR1660CCC500

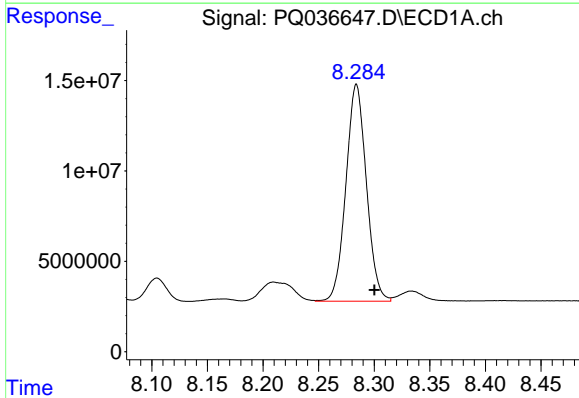
Manual Integrations
APPROVED

Sohil
1/24/2019 8:18:29 AM



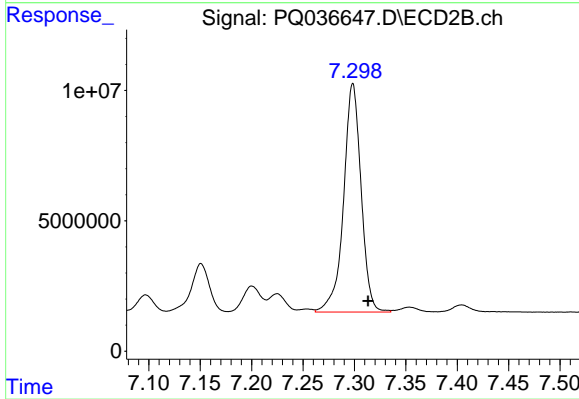
#34 AR-1260-4

R.T.: 7.056 min
Delta R.T.: -0.014 min
Response: 41407078
Conc: 460.64 ng/ml



#35 AR-1260-5

R.T.: 8.284 min
Delta R.T.: -0.016 min
Response: 153756944
Conc: 458.08 ng/ml



#35 AR-1260-5

R.T.: 7.298 min
Delta R.T.: -0.015 min
Response: 104043481
Conc: 470.93 ng/ml