

Data Path : Z:\pestpcbsrv\HPCHEM1\ECD_Q\Data\PQ012424\
 Data File : PQ065035.D
 Signal(s) : Signal #1: ECD1A.ch Signal #2: ECD2B.ch
 Acq On : 24 Jan 2024 20:10
 Operator : YP\AJ
 Sample : P1187-03
 Misc : AR1660 MDL 25 PPB
 ALS Vial : 24 Sample Multiplier: 1

Instrument :
 ECD_Q
ClientSampleId :
 MDL-SOIL-03-QT1-2024

Manual Integrations
APPROVED

Reviewed By :Ankita Jodhani 01/25/2024
 Supervised By :Sohil Jodhani 01/25/2024

Integration File signal 1: autoint1.e
 Integration File signal 2: autoint2.e
 Quant Time: Jan 25 01:08:45 2024
 Quant Method : Z:\pestpcbsrv\HPCHEM1\ECD_Q\Method\PQ011724.M
 Quant Title : GC EXTRACTABLES
 QLast Update : Thu Jan 18 00:09:27 2024
 Response via : Initial Calibration
 Integrator: ChemStation

Volume Inj. : 2 µl
 Signal #1 Phase : ZB-MR2 Signal #2 Phase: ZB-MR2
 Signal #1 Info : 30Mx0.32mmx 0.50µ Signal #2 Info : 30M x 0.32mm x 0.25µm

Compound	RT#1	RT#2	Resp#1	Resp#2	ng/ml	ng/ml

System Monitoring Compounds						
1) SA Tetrachlo...	3.473	2.743	84175964	167.2E6	22.596	25.036
2) SA Decachlor...	8.778	7.520	71563606	188.6E6	23.156	25.956
Target Compounds						
3) L1 AR-1016-1	4.596	3.744	3315552	7773275	27.479	31.127
4) L1 AR-1016-2	4.615	3.759	4794871	10008962	27.864	29.083
5) L1 AR-1016-3	4.675	3.919	2972998	5330523	27.057	27.846
6) L1 AR-1016-4	4.768	3.969	2507487	4883839	27.352	30.360
7) L1 AR-1016-5	5.060	4.163	2373151	5406595	26.975	27.225
31) L7 AR-1260-1	6.183	5.157	4597712	12445999	26.109	30.925m
32) L7 AR-1260-2	6.449	5.347	5693885	14068106	24.925m	28.766m
33) L7 AR-1260-3	6.811	5.490	4009454	15125736	24.972	31.622m#
34) L7 AR-1260-4	7.032	5.953	4781521	11744832	26.887	30.184
35) L7 AR-1260-5	7.353	6.198	8549133	24701254	23.287	28.303m

(f)=RT Delta > 1/2 Window (#)=Amounts differ by > 25% (m)=manual int.

Data Path : Z:\pestpcbsrv\HPCHEM1\ECD_Q\Data\PQ012424\
 Data File : PQ065035.D
 Signal(s) : Signal #1: ECD1A.ch Signal #2: ECD2B.ch
 Acq On : 24 Jan 2024 20:10
 Operator : YP\AJ
 Sample : P1187-03
 Misc : AR1660 MDL 25 PPB
 ALS Vial : 24 Sample Multiplier: 1

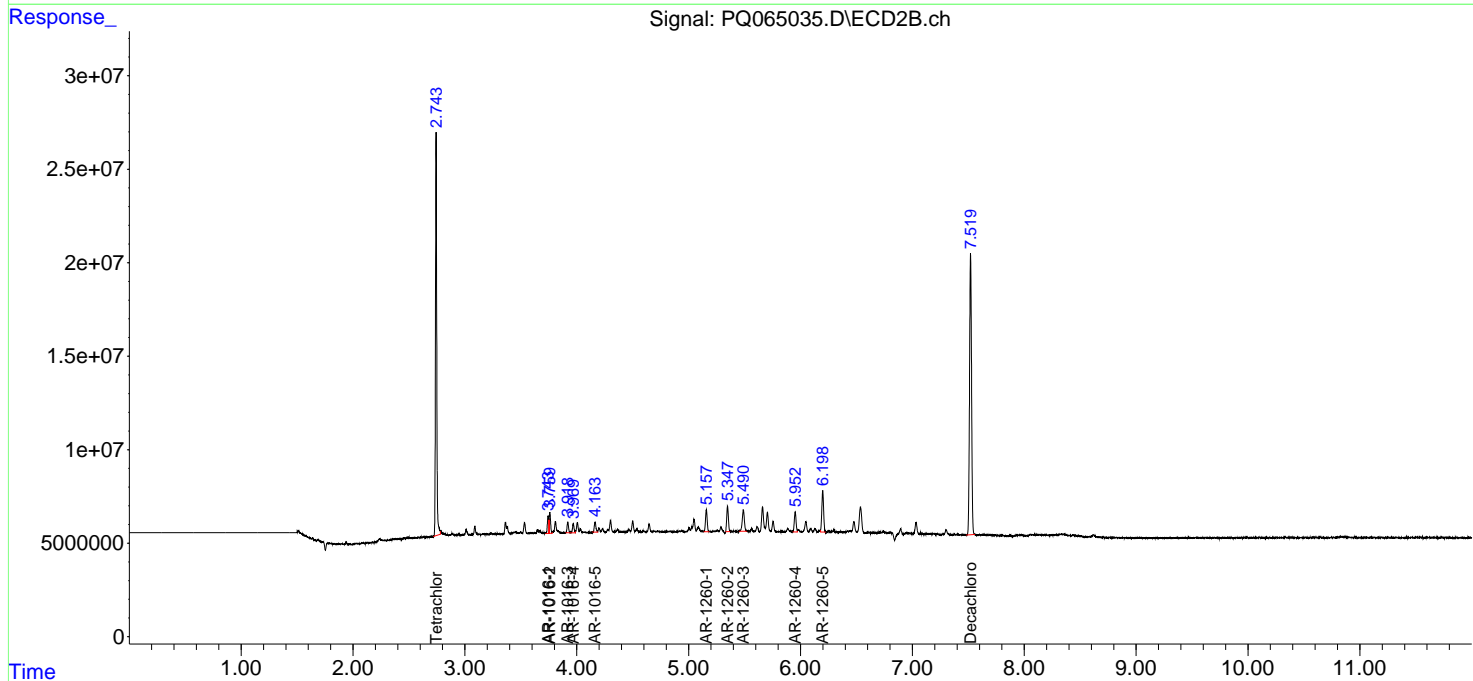
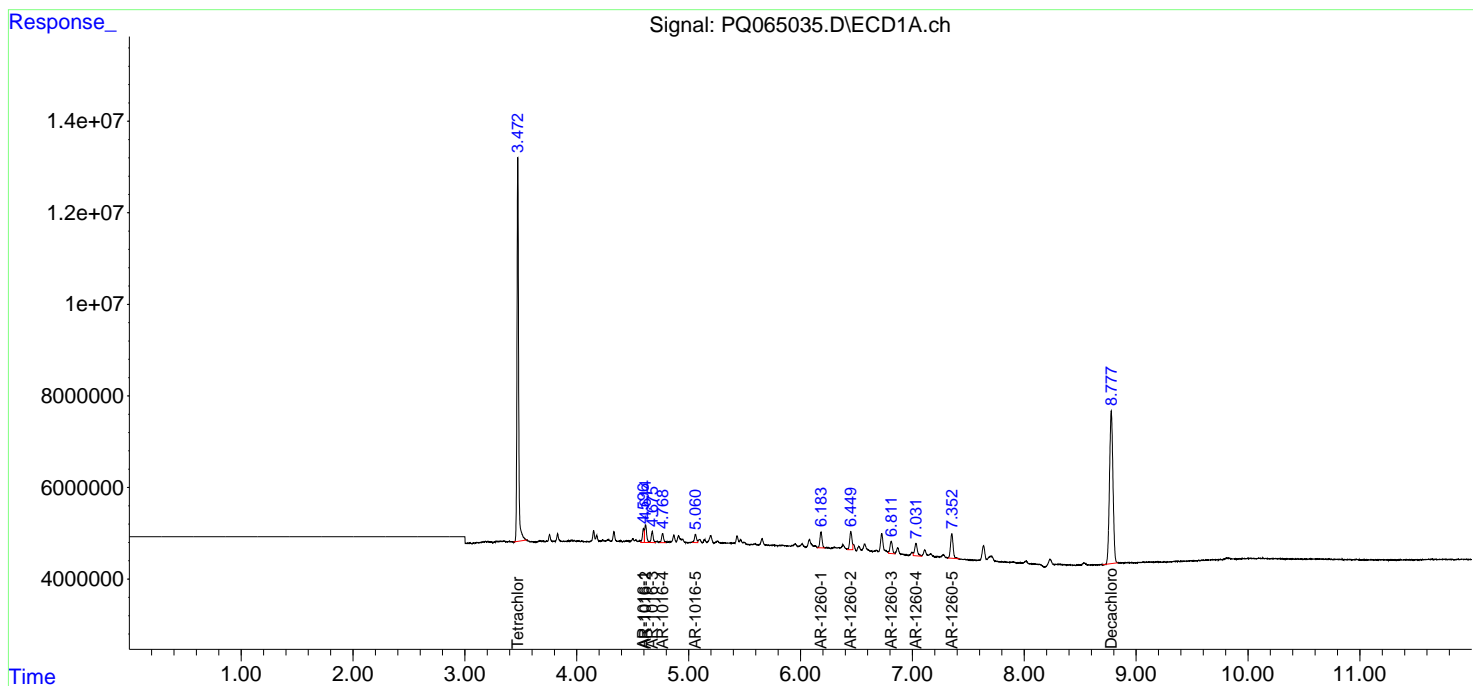
Instrument :
 ECD_Q
 ClientSampleId :
 MDL-SOIL-03-QT1-2024

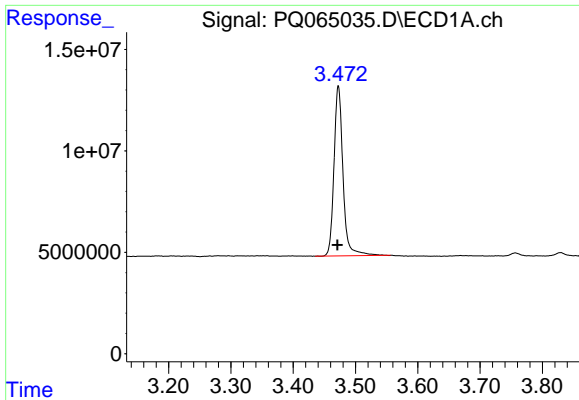
Manual Integrations
APPROVED

Reviewed By :Ankita Jodhani 01/25/2024
 Supervised By :Sohil Jodhani 01/25/2024

Integration File signal 1: autoint1.e
 Integration File signal 2: autoint2.e
 Quant Time: Jan 25 01:08:45 2024
 Quant Method : Z:\pestpcbsrv\HPCHEM1\ECD_Q\Method\PQ011724.M
 Quant Title : GC EXTRACTABLES
 QLast Update : Thu Jan 18 00:09:27 2024
 Response via : Initial Calibration
 Integrator: ChemStation

Volume Inj. : 2 µl
 Signal #1 Phase : ZB-MR1 Signal #2 Phase: ZB-MR2
 Signal #1 Info : 30Mx0.32mmx 0.50µ Signal #2 Info : 30M x 0.32mm x 0.25µm





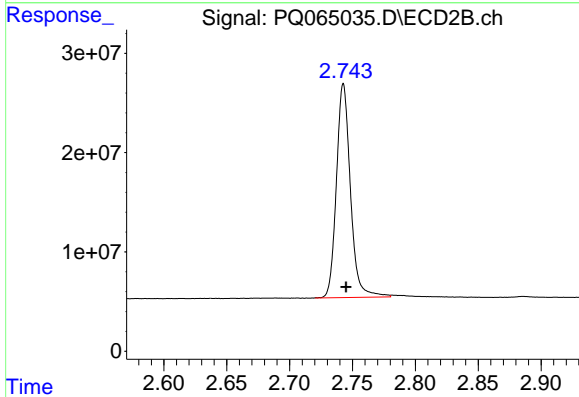
#1 Tetrachloro-m-xylene

R.T.: 3.473 min
 Delta R.T.: 0.002 min
 Response: 84175964
 Conc: 22.60 ng/ml

Instrument : ECD_Q
 Client Sample Id : MDL-SOIL-03-QT1-2024

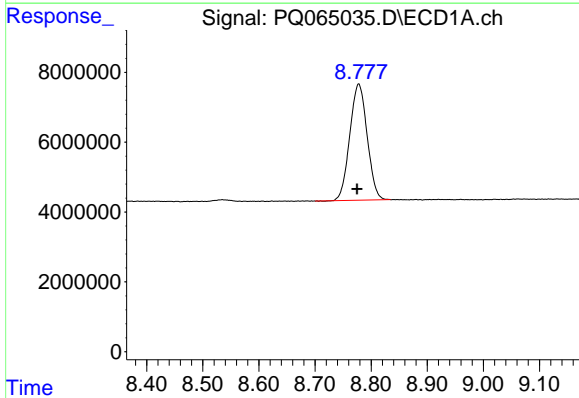
Manual Integrations
 APPROVED

Reviewed By :Ankita Jodhani 01/25/2024
 Supervised By :Sohil Jodhani 01/25/2024



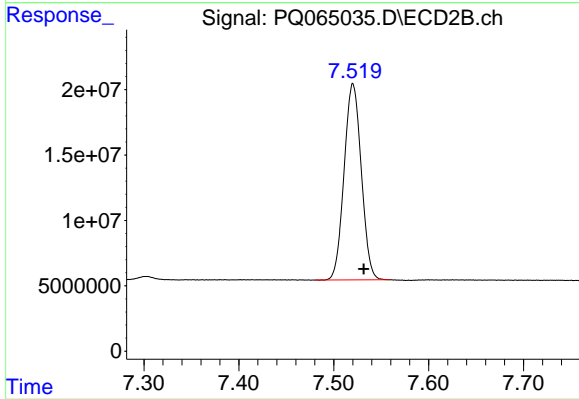
#1 Tetrachloro-m-xylene

R.T.: 2.743 min
 Delta R.T.: -0.002 min
 Response: 167183231
 Conc: 25.04 ng/ml



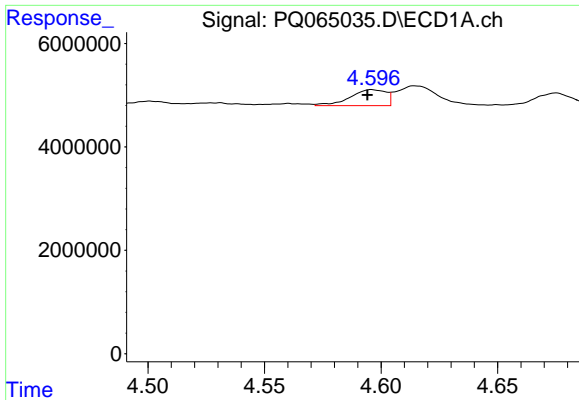
#2 Decachlorobiphenyl

R.T.: 8.778 min
 Delta R.T.: 0.003 min
 Response: 71563606
 Conc: 23.16 ng/ml



#2 Decachlorobiphenyl

R.T.: 7.520 min
 Delta R.T.: -0.011 min
 Response: 188632407
 Conc: 25.96 ng/ml



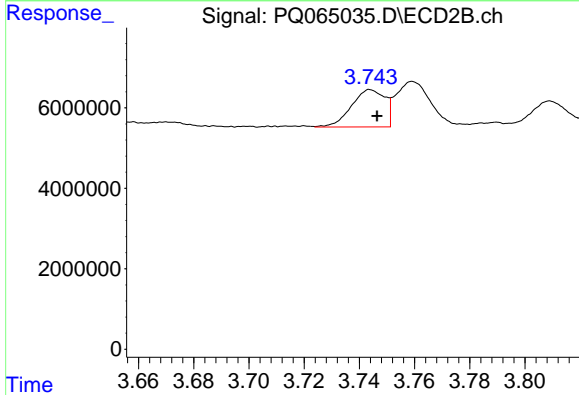
#3 AR-1016-1

R.T.: 4.596 min
 Delta R.T.: 0.002 min
 Response: 3315552
 Conc: 27.48 ng/ml

Instrument : ECD_Q
 Client Sample Id : MDL-SOIL-03-QT1-2024

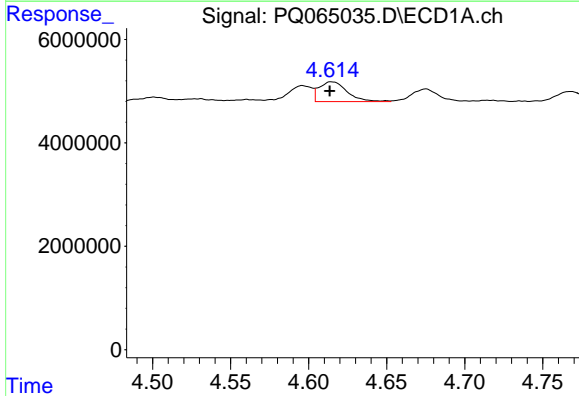
Manual Integrations
 APPROVED

Reviewed By :Ankita Jodhani 01/25/2024
 Supervised By :Sohil Jodhani 01/25/2024



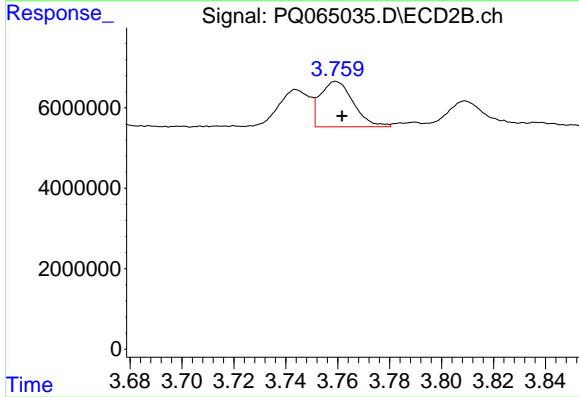
#3 AR-1016-1

R.T.: 3.744 min
 Delta R.T.: -0.003 min
 Response: 7773275
 Conc: 31.13 ng/ml



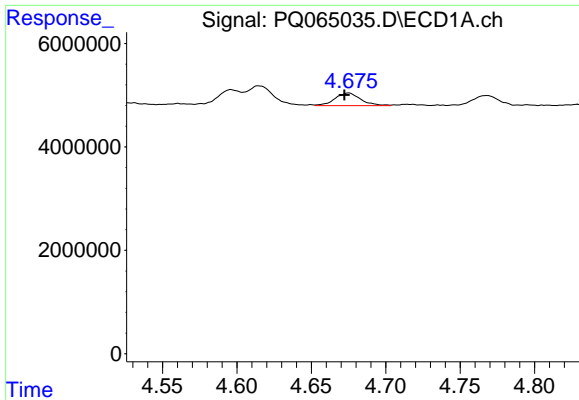
#4 AR-1016-2

R.T.: 4.615 min
 Delta R.T.: 0.001 min
 Response: 4794871
 Conc: 27.86 ng/ml



#4 AR-1016-2

R.T.: 3.759 min
 Delta R.T.: -0.002 min
 Response: 10008962
 Conc: 29.08 ng/ml



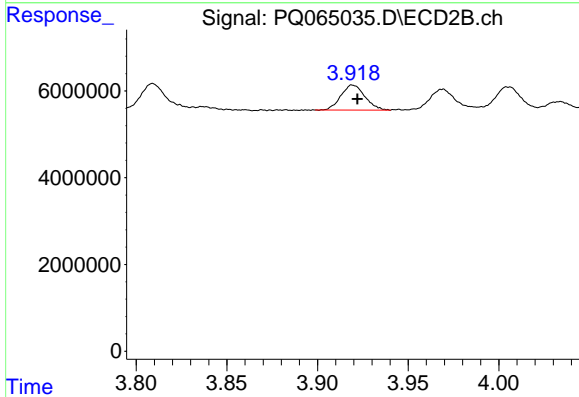
#5 AR-1016-3

R.T.: 4.675 min
 Delta R.T.: 0.003 min
 Response: 2972998
 Conc: 27.06 ng/ml

Instrument :
 ECD_Q
 ClientSampleId :
 MDL-SOIL-03-QT1-2024

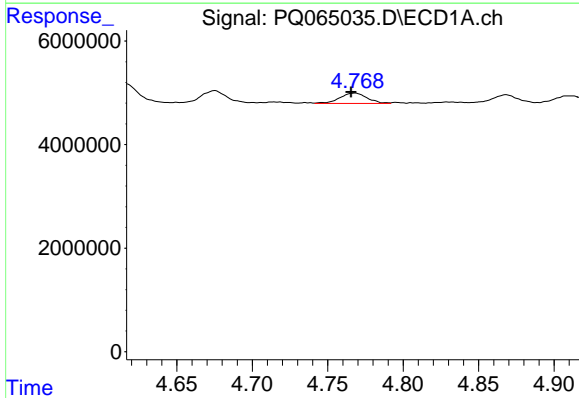
Manual Integrations
 APPROVED

Reviewed By :Ankita Jodhani 01/25/2024
 Supervised By :Sohil Jodhani 01/25/2024



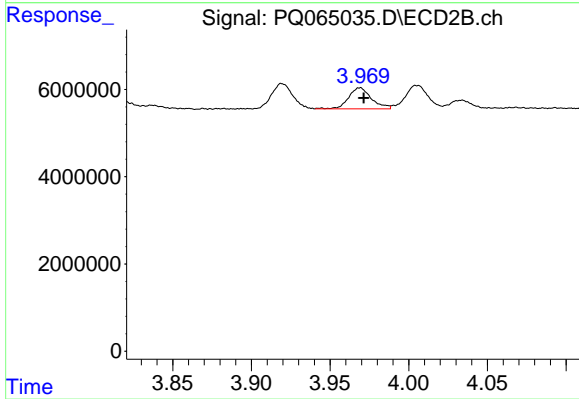
#5 AR-1016-3

R.T.: 3.919 min
 Delta R.T.: -0.003 min
 Response: 5330523
 Conc: 27.85 ng/ml



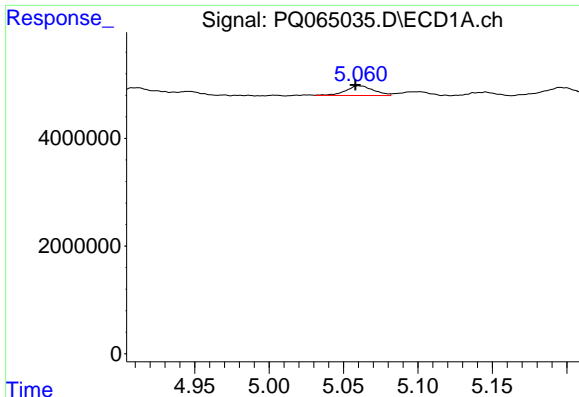
#6 AR-1016-4

R.T.: 4.768 min
 Delta R.T.: 0.002 min
 Response: 2507487
 Conc: 27.35 ng/ml



#6 AR-1016-4

R.T.: 3.969 min
 Delta R.T.: -0.002 min
 Response: 4883839
 Conc: 30.36 ng/ml



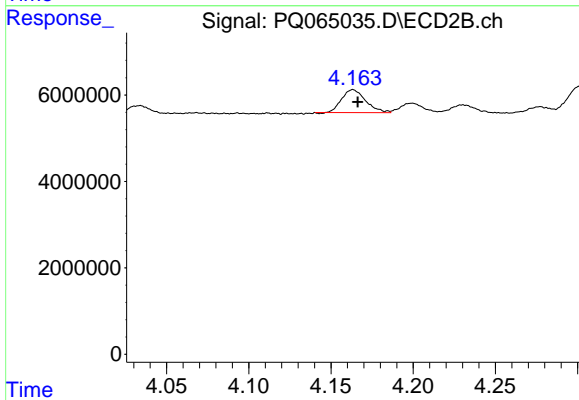
#7 AR-1016-5

R.T.: 5.060 min
 Delta R.T.: 0.003 min
 Response: 2373151
 Conc: 26.98 ng/ml

Instrument :
 ECD_Q
 ClientSampleId :
 MDL-SOIL-03-QT1-2024

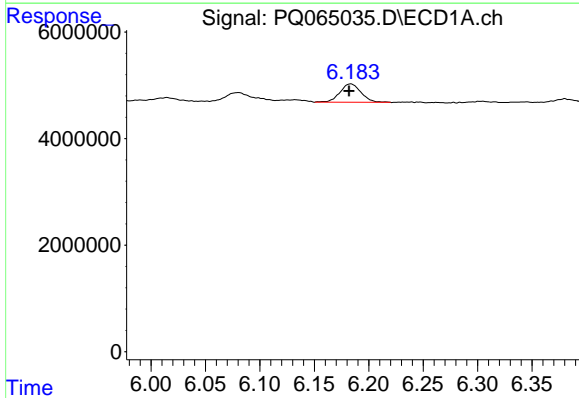
Manual Integrations
 APPROVED

Reviewed By :Ankita Jodhani 01/25/2024
 Supervised By :Sohil Jodhani 01/25/2024



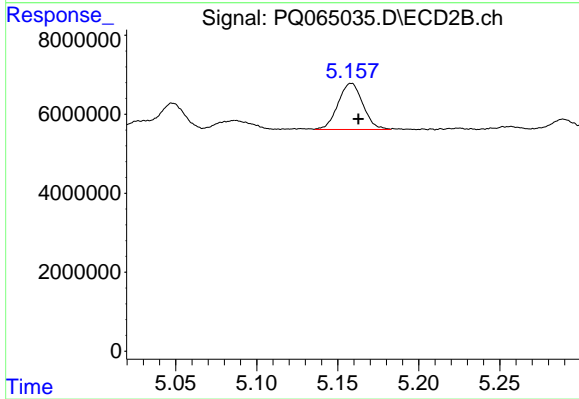
#7 AR-1016-5

R.T.: 4.163 min
 Delta R.T.: -0.003 min
 Response: 5406595
 Conc: 27.22 ng/ml



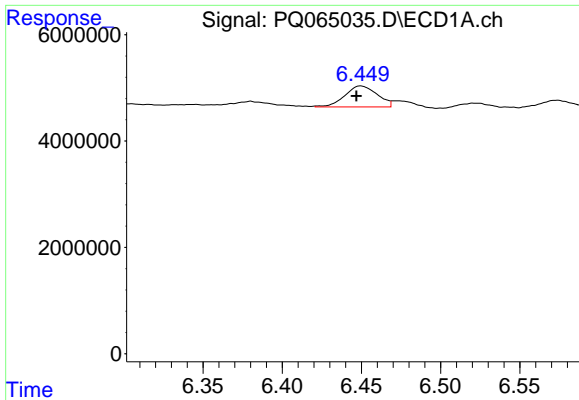
#31 AR-1260-1

R.T.: 6.183 min
 Delta R.T.: 0.001 min
 Response: 4597712
 Conc: 26.11 ng/ml



#31 AR-1260-1

R.T.: 5.157 min
 Delta R.T.: -0.005 min
 Response: 12445999
 Conc: 30.93 ng/ml m



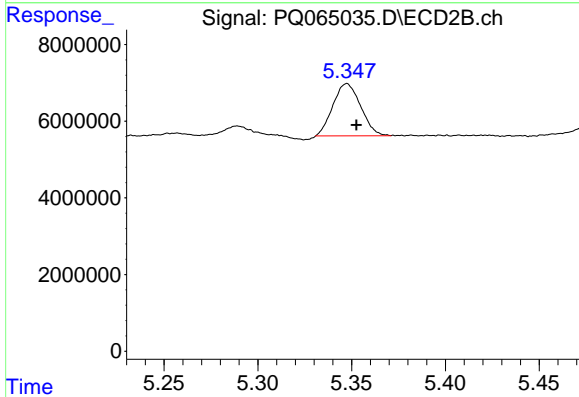
#32 AR-1260-2

R.T.: 6.449 min
 Delta R.T.: 0.002 min
 Response: 5693885
 Conc: 24.93 ng/ml

Instrument :
 ECD_Q
 ClientSampleId :
 MDL-SOIL-03-QT1-2024

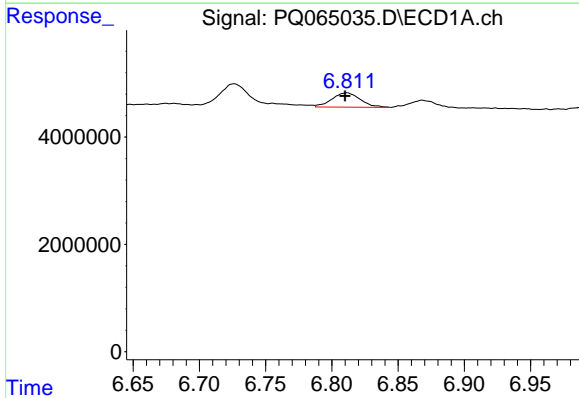
Manual Integrations
 APPROVED

Reviewed By :Ankita Jodhani 01/25/2024
 Supervised By :Sohil Jodhani 01/25/2024



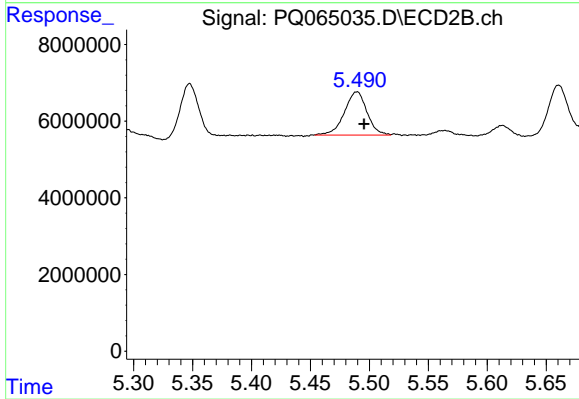
#32 AR-1260-2

R.T.: 5.347 min
 Delta R.T.: -0.005 min
 Response: 14068106
 Conc: 28.77 ng/ml m



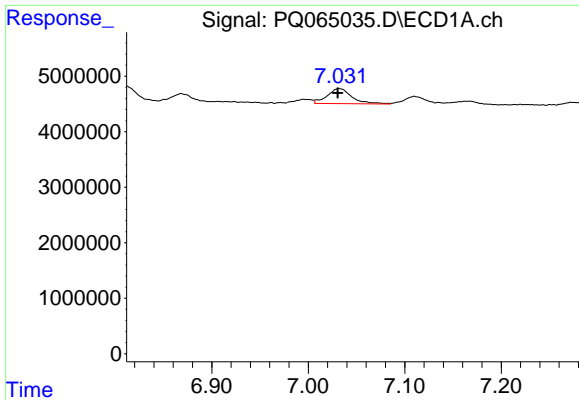
#33 AR-1260-3

R.T.: 6.811 min
 Delta R.T.: 0.001 min
 Response: 4009454
 Conc: 24.97 ng/ml



#33 AR-1260-3

R.T.: 5.490 min
 Delta R.T.: -0.006 min
 Response: 15125736
 Conc: 31.62 ng/ml m



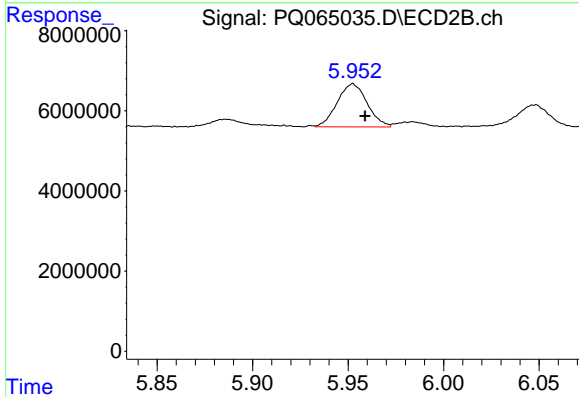
#34 AR-1260-4

R.T.: 7.032 min
 Delta R.T.: 0.001 min
 Response: 4781521
 Conc: 26.89 ng/ml

Instrument :
 ECD_Q
 ClientSampleId :
 MDL-SOIL-03-QT1-2024

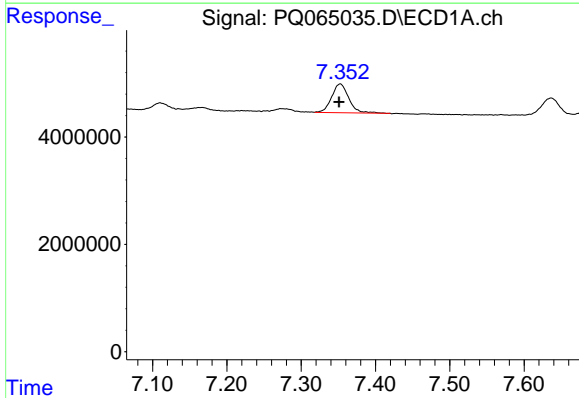
Manual Integrations
 APPROVED

Reviewed By :Ankita Jodhani 01/25/2024
 Supervised By :Sohil Jodhani 01/25/2024



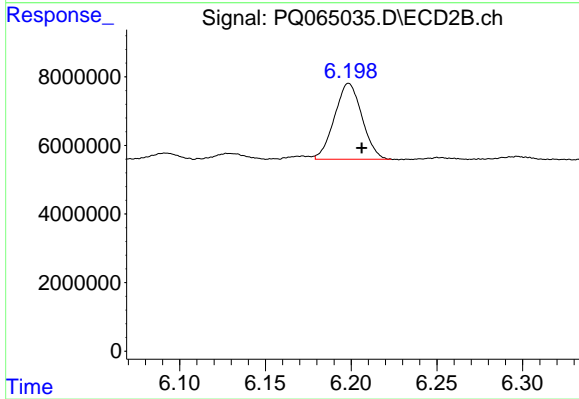
#34 AR-1260-4

R.T.: 5.953 min
 Delta R.T.: -0.006 min
 Response: 11744832
 Conc: 30.18 ng/ml



#35 AR-1260-5

R.T.: 7.353 min
 Delta R.T.: 0.002 min
 Response: 8549133
 Conc: 23.29 ng/ml



#35 AR-1260-5

R.T.: 6.198 min
 Delta R.T.: -0.008 min
 Response: 24701254
 Conc: 28.30 ng/ml m