

Data Path : Z:\pestpcbsrv\HPCHEM1\ECD_Q\Data\PQ012522\
 Data File : PQ055932.D
 Signal(s) : Signal #1: ECD1A.ch Signal #2: ECD2B.ch
 Acq On : 25 Jan 2022 09:10
 Operator : AJ\MA
 Sample : AR1660CCC500
 Misc :
 ALS Vial : 3 Sample Multiplier: 1

Instrument :
 ECD_Q
 ClientSampleId :
 AR1660CCC500

Integration File signal 1: autoint1.e
 Integration File signal 2: autoint2.e
 Quant Time: Jan 25 22:28:12 2022
 Quant Method : Z:\pestpcbsrv\HPCHEM1\ECD_Q\Method\PQ011922.M
 Quant Title : GC EXTRACTABLES
 QLast Update : Thu Jan 20 13:18:56 2022
 Response via : Initial Calibration
 Integrator: ChemStation

Volume Inj. : 2 µl
 Signal #1 Phase : ZB-MR2 Signal #2 Phase: ZB-MR2
 Signal #1 Info : 30Mx0.32mmx 0.50µ Signal #2 Info : 30M x 0.32mm x 0.25µm

Compound	RT#1	RT#2	Resp#1	Resp#2	ng/ml	ng/ml

System Monitoring Compounds						
1) SA Tetrachlo...	5.239	4.294	718.9E6	619.8E6	53.082	55.121
2) SA Decachlor...	11.427	9.659	787.2E6	426.7E6	53.924	53.499
Target Compounds						
3) L1 AR-1016-1	6.568	5.564	171.1E6	169.3E6	489.181	551.280
4) L1 AR-1016-2	6.592	5.584	353.9E6	337.8E6	520.526	542.345
5) L1 AR-1016-3	6.658	5.778	243.2E6	149.2E6	534.934	546.497
6) L1 AR-1016-4	6.766	5.823	195.0E6	134.6E6	526.635	533.503
7) L1 AR-1016-5	7.077	6.055	154.4E6	157.5E6	527.194	538.130
31) L7 AR-1260-1	8.253	7.151	249.6E6	289.9E6	519.316	529.503
32) L7 AR-1260-2	8.519	7.348	297.8E6	354.0E6	505.568	533.231
33) L7 AR-1260-3	8.885	7.505	260.4E6	327.0E6	520.748	531.252
34) L7 AR-1260-4	9.129	7.988	298.9E6	265.7E6	513.066	526.077
35) L7 AR-1260-5	9.476	8.234	689.8E6	631.1E6	524.865	531.320

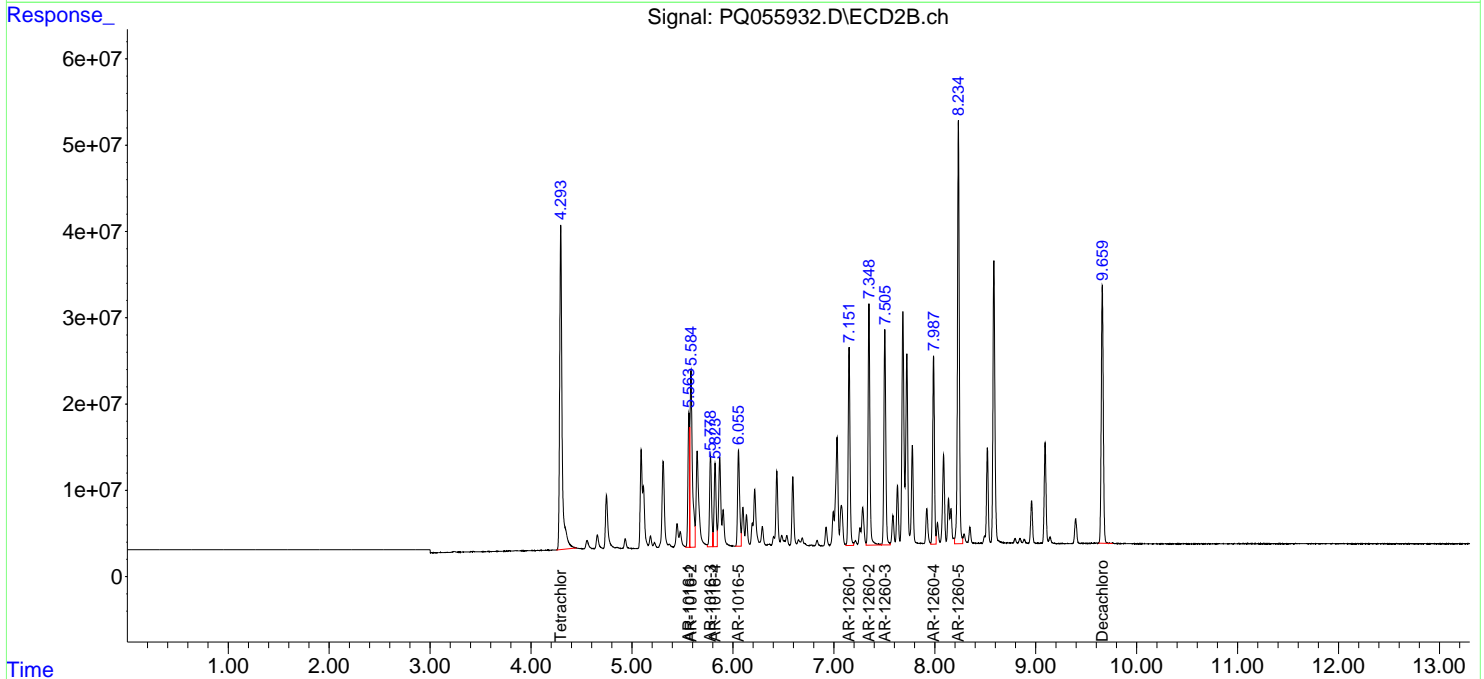
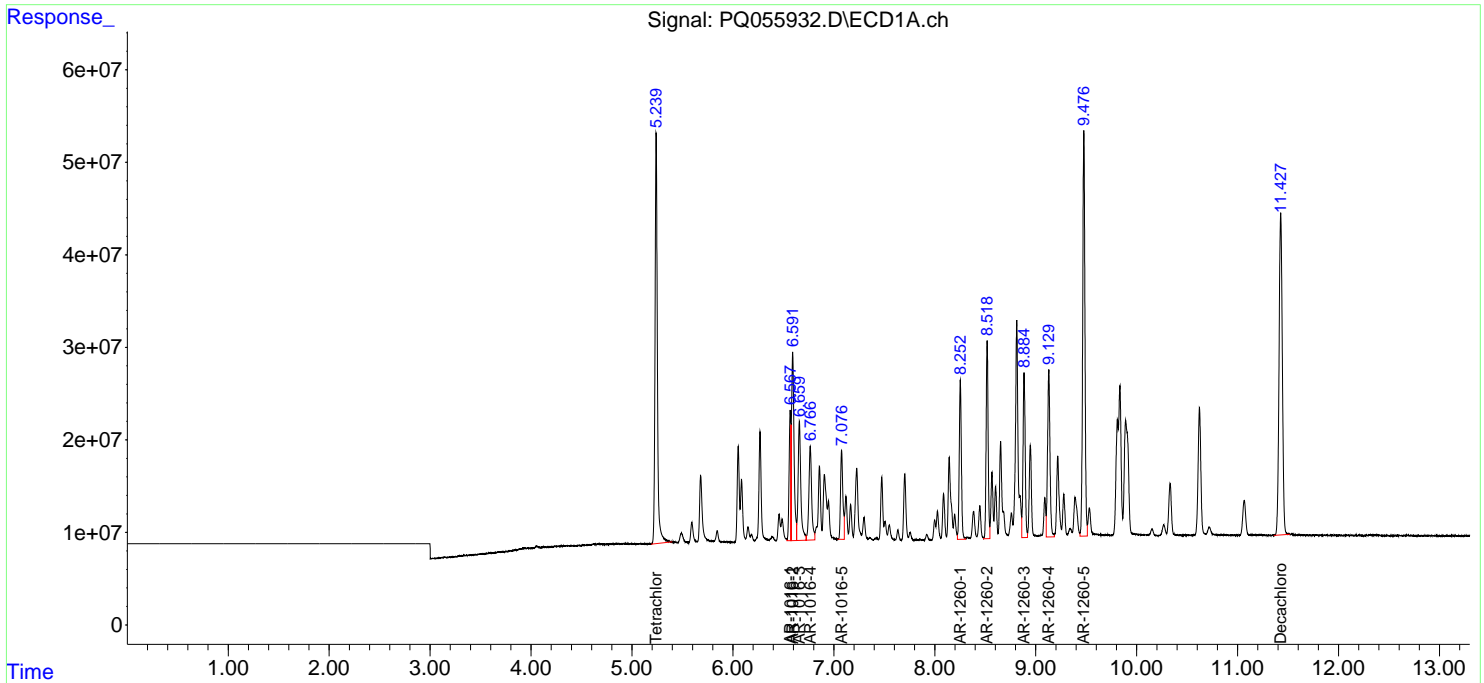
(f)=RT Delta > 1/2 Window (#)=Amounts differ by > 25% (m)=manual int.

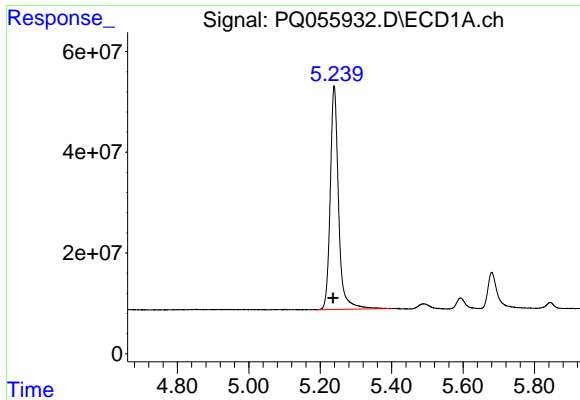
Data Path : Z:\pestpcbsrv\HPCHEM1\ECD_Q\Data\PQ012522\
 Data File : PQ055932.D
 Signal(s) : Signal #1: ECD1A.ch Signal #2: ECD2B.ch
 Acq On : 25 Jan 2022 09:10
 Operator : AJ\MA
 Sample : AR1660CCC500
 Misc :
 ALS Vial : 3 Sample Multiplier: 1

Instrument :
 ECD_Q
 ClientSampleId :
 AR1660CCC500

Integration File signal 1: autoint1.e
 Integration File signal 2: autoint2.e
 Quant Time: Jan 25 22:28:12 2022
 Quant Method : Z:\pestpcbsrv\HPCHEM1\ECD_Q\Method\PQ011922.M
 Quant Title : GC EXTRACTABLES
 QLast Update : Thu Jan 20 13:18:56 2022
 Response via : Initial Calibration
 Integrator: ChemStation

Volume Inj. : 2 µl
 Signal #1 Phase : ZB-MR1 Signal #2 Phase: ZB-MR2
 Signal #1 Info : 30Mx0.32mmx 0.50µ Signal #2 Info : 30M x 0.32mm x 0.25µm

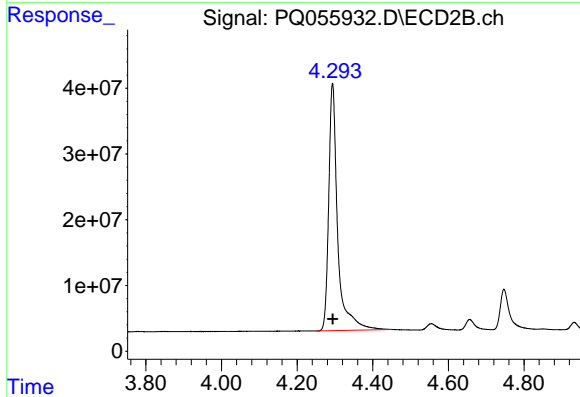




#1 Tetrachloro-m-xylene

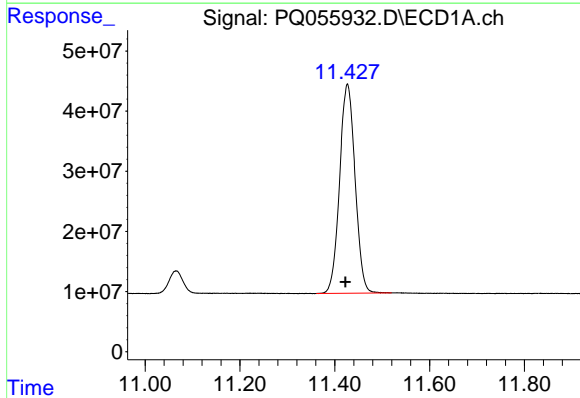
R.T.: 5.239 min
 Delta R.T.: 0.003 min
 Response: 718947917
 Conc: 53.08 ng/ml

Instrument :
 ECD_Q
 ClientSampleId :
 AR1660CCC500



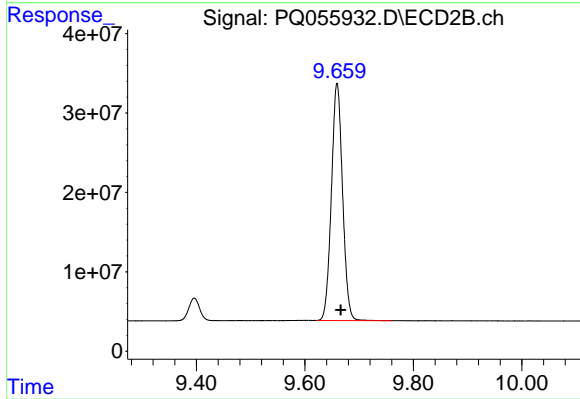
#1 Tetrachloro-m-xylene

R.T.: 4.294 min
 Delta R.T.: 0.000 min
 Response: 619769434
 Conc: 55.12 ng/ml



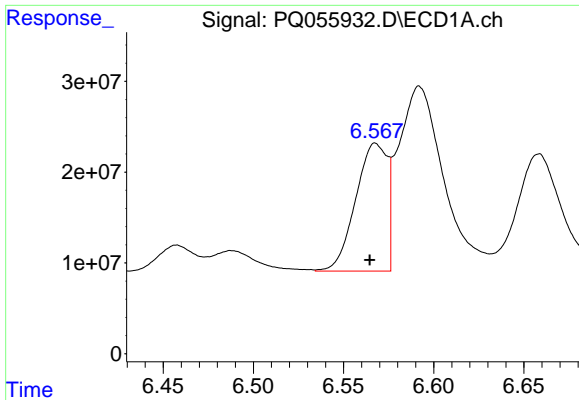
#2 Decachlorobiphenyl

R.T.: 11.427 min
 Delta R.T.: 0.005 min
 Response: 787213539
 Conc: 53.92 ng/ml



#2 Decachlorobiphenyl

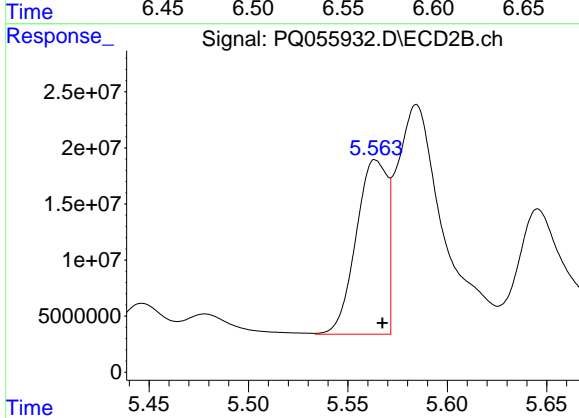
R.T.: 9.659 min
 Delta R.T.: -0.007 min
 Response: 426665553
 Conc: 53.50 ng/ml



#3 AR-1016-1

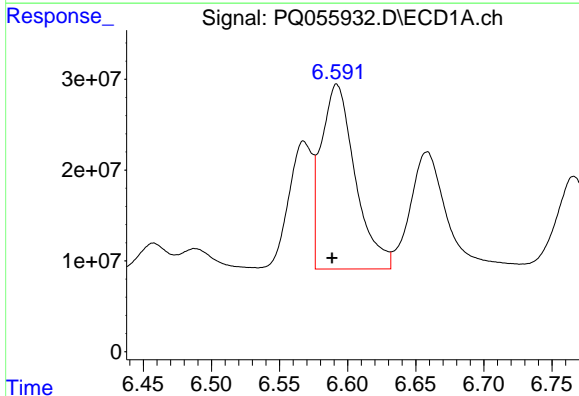
R.T.: 6.568 min
 Delta R.T.: 0.003 min
 Response: 171065317
 Conc: 489.18 ng/ml

Instrument :
 ECD_Q
 ClientSampleId :
 AR1660CCC500



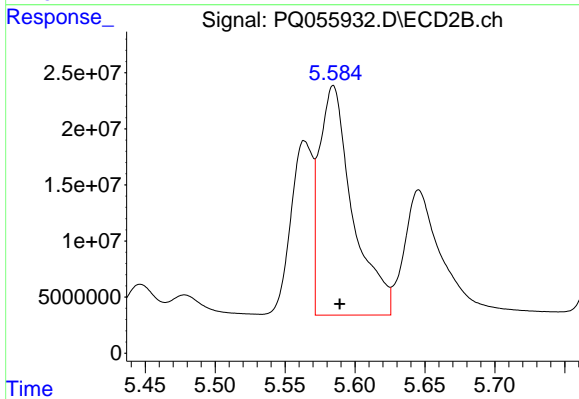
#3 AR-1016-1

R.T.: 5.564 min
 Delta R.T.: -0.004 min
 Response: 169291668
 Conc: 551.28 ng/ml



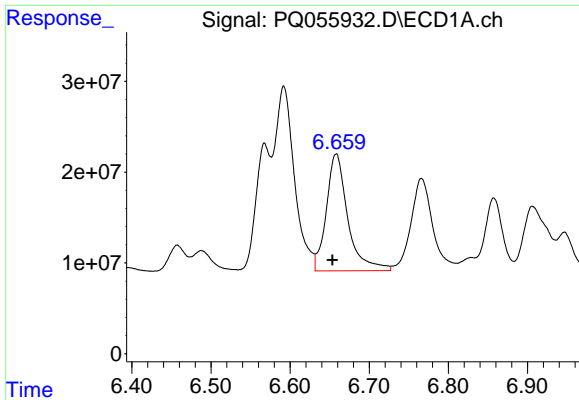
#4 AR-1016-2

R.T.: 6.592 min
 Delta R.T.: 0.003 min
 Response: 353886133
 Conc: 520.53 ng/ml



#4 AR-1016-2

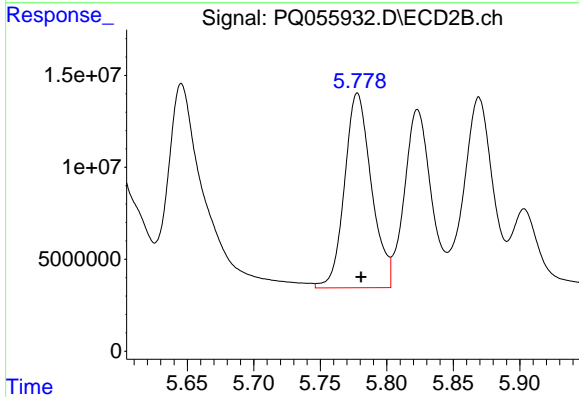
R.T.: 5.584 min
 Delta R.T.: -0.005 min
 Response: 337818553
 Conc: 542.35 ng/ml



#5 AR-1016-3

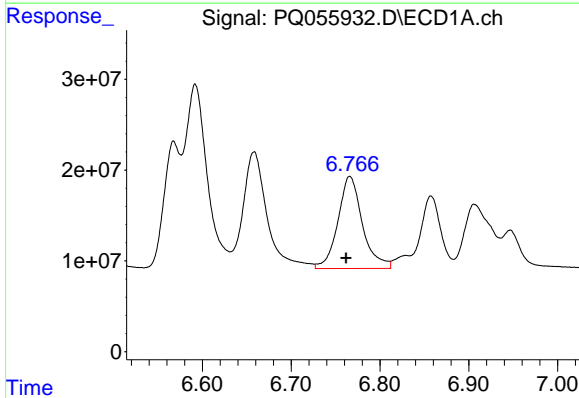
R.T.: 6.658 min
 Delta R.T.: 0.005 min
 Response: 243214815
 Conc: 534.93 ng/ml

Instrument :
 ECD_Q
 ClientSampleId :
 AR1660CCC500



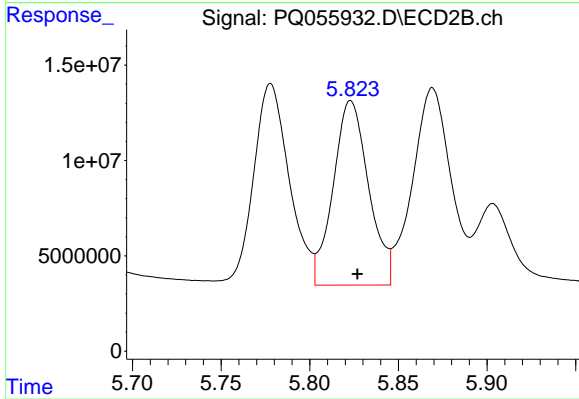
#5 AR-1016-3

R.T.: 5.778 min
 Delta R.T.: -0.003 min
 Response: 149163178
 Conc: 546.50 ng/ml



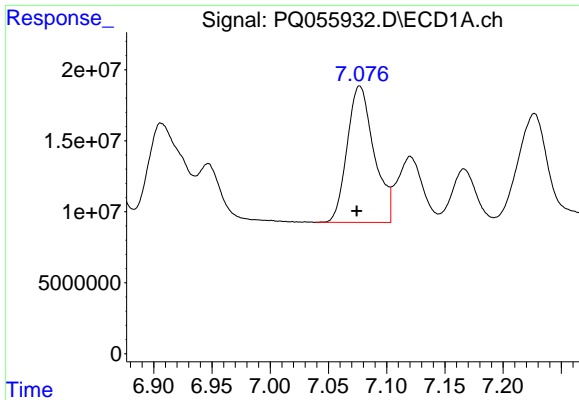
#6 AR-1016-4

R.T.: 6.766 min
 Delta R.T.: 0.004 min
 Response: 195025044
 Conc: 526.63 ng/ml



#6 AR-1016-4

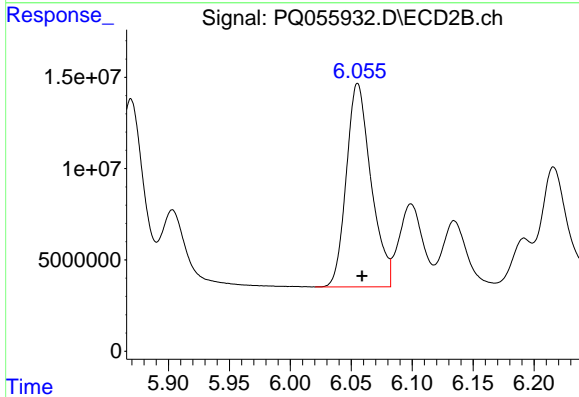
R.T.: 5.823 min
 Delta R.T.: -0.004 min
 Response: 134624123
 Conc: 533.50 ng/ml



#7 AR-1016-5

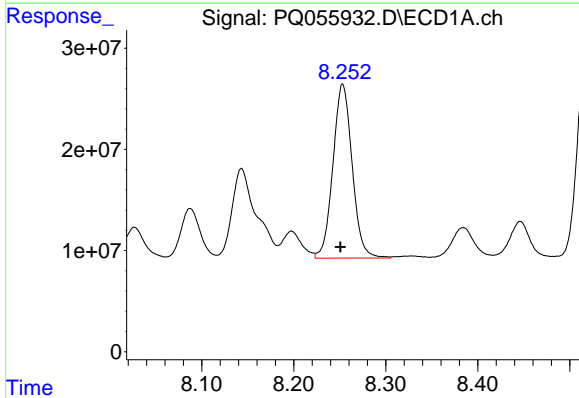
R.T.: 7.077 min
 Delta R.T.: 0.003 min
 Response: 154365955
 Conc: 527.19 ng/ml

Instrument :
 ECD_Q
 ClientSampleId :
 AR1660CCC500



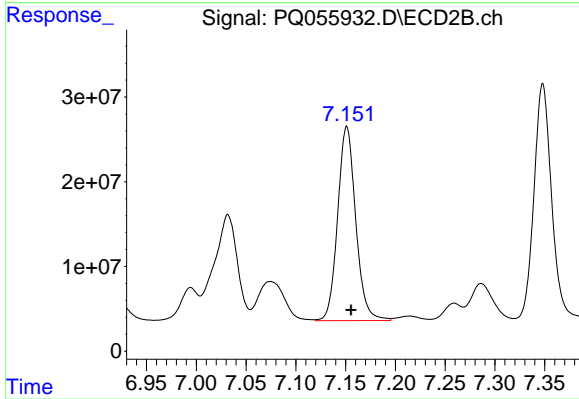
#7 AR-1016-5

R.T.: 6.055 min
 Delta R.T.: -0.004 min
 Response: 157545534
 Conc: 538.13 ng/ml



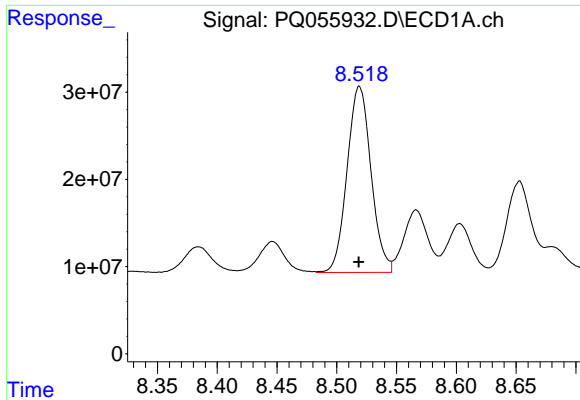
#31 AR-1260-1

R.T.: 8.253 min
 Delta R.T.: 0.002 min
 Response: 249601578
 Conc: 519.32 ng/ml



#31 AR-1260-1

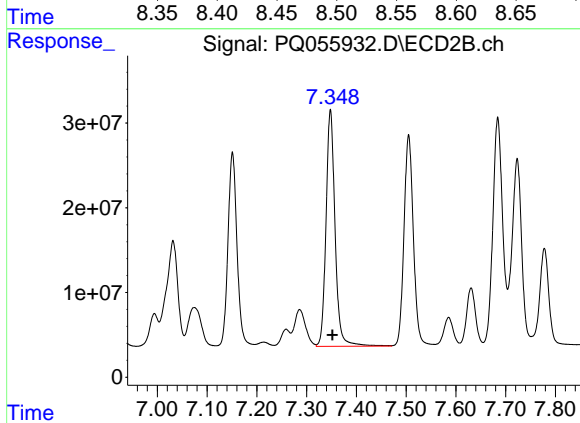
R.T.: 7.151 min
 Delta R.T.: -0.004 min
 Response: 289944523
 Conc: 529.50 ng/ml



#32 AR-1260-2

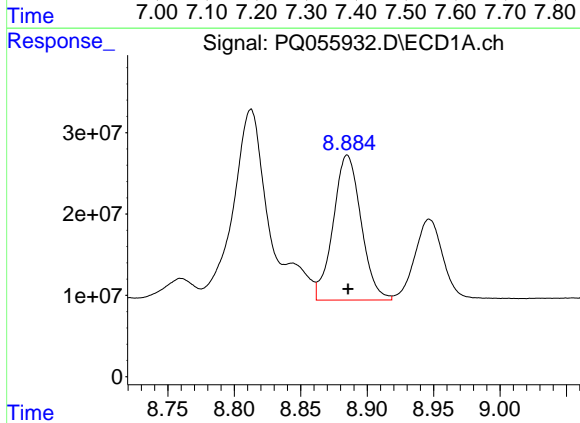
R.T.: 8.519 min
 Delta R.T.: 0.000 min
 Response: 297818908
 Conc: 505.57 ng/ml

Instrument :
 ECD_Q
 ClientSampleId :
 AR1660CCC500



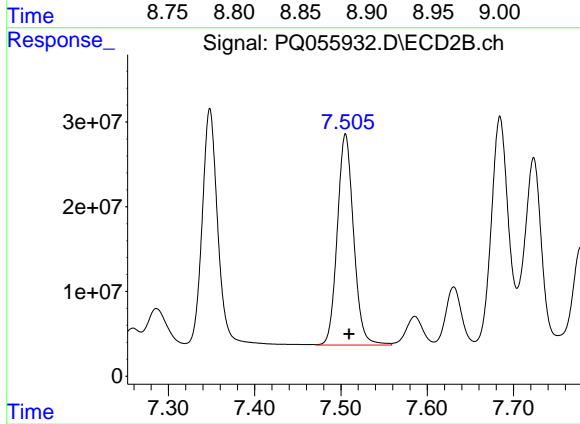
#32 AR-1260-2

R.T.: 7.348 min
 Delta R.T.: -0.004 min
 Response: 353952457
 Conc: 533.23 ng/ml



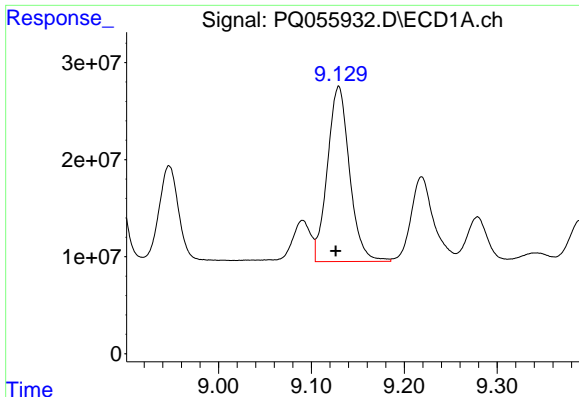
#33 AR-1260-3

R.T.: 8.885 min
 Delta R.T.: 0.000 min
 Response: 260398957
 Conc: 520.75 ng/ml



#33 AR-1260-3

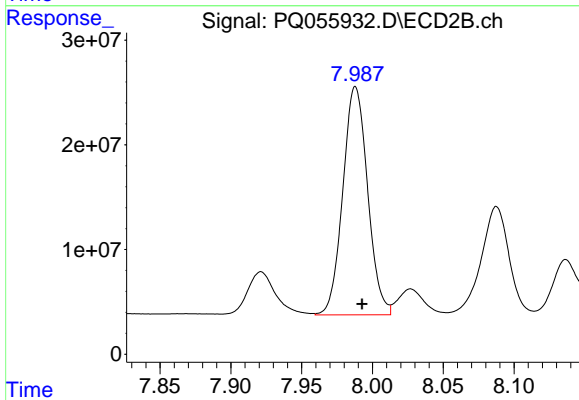
R.T.: 7.505 min
 Delta R.T.: -0.004 min
 Response: 327006263
 Conc: 531.25 ng/ml



#34 AR-1260-4

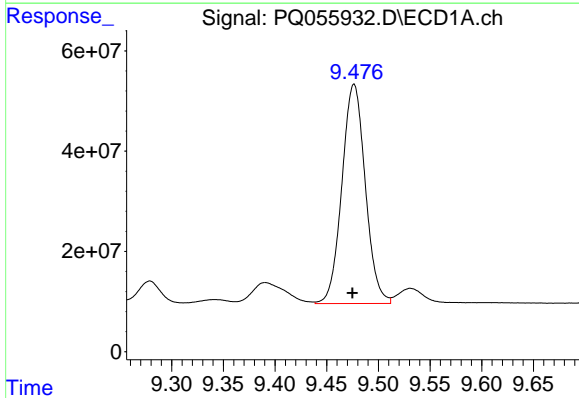
R.T.: 9.129 min
 Delta R.T.: 0.003 min
 Response: 298863061
 Conc: 513.07 ng/ml

Instrument :
 ECD_Q
 ClientSampleId :
 AR1660CCC500



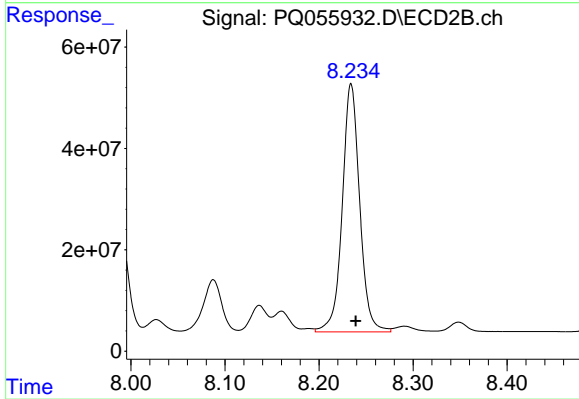
#34 AR-1260-4

R.T.: 7.988 min
 Delta R.T.: -0.005 min
 Response: 265746224
 Conc: 526.08 ng/ml



#35 AR-1260-5

R.T.: 9.476 min
 Delta R.T.: 0.002 min
 Response: 689818483
 Conc: 524.86 ng/ml



#35 AR-1260-5

R.T.: 8.234 min
 Delta R.T.: -0.005 min
 Response: 631135686
 Conc: 531.32 ng/ml