

Data Path : Z:\pestpcbsrv\HPCHEM1\ECD_Q\Data\PQ012524\
 Data File : PQ065062.D
 Signal(s) : Signal #1: ECD1A.ch Signal #2: ECD2B.ch
 Acq On : 25 Jan 2024 13:28
 Operator : YP\AJ
 Sample : PB158618BS
 Misc :
 ALS Vial : 8 Sample Multiplier: 1

Instrument :
 ECD_Q
 ClientSampleId :
 PB158618BS

Integration File signal 1: autoint1.e
 Integration File signal 2: autoint2.e
 Quant Time: Jan 25 21:40:19 2024
 Quant Method : Z:\pestpcbsrv\HPCHEM1\ECD_Q\Method\PQ011724.M
 Quant Title : GC EXTRACTABLES
 QLast Update : Thu Jan 18 00:09:27 2024
 Response via : Initial Calibration
 Integrator: ChemStation

Volume Inj. : 2 µl
 Signal #1 Phase : ZB-MR1 Signal #2 Phase: ZB-MR2
 Signal #1 Info : 30Mx0.32mmx 0.50µ Signal #2 Info : 30M x 0.32mm x 0.25µm

Compound	RT#1	RT#2	Resp#1	Resp#2	ng/ml	ng/ml
System Monitoring Compounds						
1) SA Tetrachlo...	3.475	2.743	84779654	154.2E6	22.758	23.097
2) SA Decachlor...	8.790	7.522	72105520	177.3E6	23.332	24.395
Target Compounds						
3) L1 AR-1016-1	4.600	3.743	52910711	112.4E6	438.519	450.207
4) L1 AR-1016-2	4.620	3.759	77280853	156.0E6	449.092	453.227
5) L1 AR-1016-3	4.678	3.919	49020079	85299901	446.125	445.590
6) L1 AR-1016-4	4.771	3.968	39991674	71868743	436.235	446.768
7) L1 AR-1016-5	5.065	4.163	38608819	88279282	438.859	444.525
8) L2 AR-1221-1	3.677	2.944	5150502	10293781	114.594	108.221
9) L2 AR-1221-2	3.760	3.020	6730541	13502915	206.663	187.827
10) L2 AR-1221-3	3.832	3.088	28284267	55500536	281.600	284.047
11) L3 AR-1232-1	3.832	3.088	28284267	55500536	335.815	340.112
12) L3 AR-1232-2	4.336	3.759	41006492	156.0E6	872.243	920.546
13) L3 AR-1232-3	4.620	3.919	77280853	85299901	898.116	925.200
14) L3 AR-1232-4	4.771	4.005	39991674	80098665	920.952	1017.479
15) L3 AR-1232-5	4.872	4.163	31409974	88279282	1044.555	982.570
16) L4 AR-1242-1	4.600	3.743	52910711	112.4E6	521.087	527.280
17) L4 AR-1242-2	4.620	3.759	77280853	156.0E6	521.895	536.498
18) L4 AR-1242-3	4.678	3.919	49020079	85299901	514.524	527.701
19) L4 AR-1242-4	4.771	4.005	39991674	80098665	518.866	524.875
20) L4 AR-1242-5	5.501	4.499	5856293	72338865	71.295	355.694 #
21) L5 AR-1248-1	4.600	3.743	52910711	112.4E6	681.755	669.703
22) L5 AR-1248-2	4.872	3.968	31409974	71868743	303.843	306.653
23) L5 AR-1248-3	5.065	4.005	38608819	80098665	317.741	356.224
24) L5 AR-1248-4	5.465	4.163	6141796	88279282	43.100	316.720 #
25) L5 AR-1248-5	5.501	4.537	5856293	11654557	41.571	40.737
26) L6 AR-1254-1	5.438	4.499	30613837	72338865	218.774	173.166
27) L6 AR-1254-2	5.662	4.646	34353929	70742167	158.664	192.146
28) L6 AR-1254-3	6.021	5.029	17888877	39135045	78.845	66.867
29) L6 AR-1254-4	6.310	5.255	11798491	15869597	70.008	41.010 #
30) L6 AR-1254-5	6.735	5.662	122.6E6	271.5E6	635.719	496.312
31) L7 AR-1260-1	6.190	5.158	73379027	180.0E6	416.694	447.355
32) L7 AR-1260-2	6.457	5.348	118.6E6	218.3E6	518.978	446.357
33) L7 AR-1260-3	6.820	5.491	58027046	205.7E6	361.408	429.989
34) L7 AR-1260-4	7.041	5.953	82354317	154.0E6	463.080	395.717
35) L7 AR-1260-5	7.362	6.200	133.6E6	350.9E6	363.811	402.081
36) L8 AR-1262-1	6.686	5.662	12030381	271.5E6	66.040	761.166 #
37) L8 AR-1262-2	7.362f	5.953	133.6E6	154.0E6	277.493	291.354
38) L8 AR-1262-3	7.646f	6.479	87878194	74633220	290.852	160.788 #
39) L8 AR-1262-4	7.715	6.536	48975831	272.6E6	209.315	319.347 #
40) L8 AR-1262-5	8.243f	7.035	32782297	88345811	204.401	213.648
41) L9 AR-1268-1	7.646f	6.479	87878194	74633220	183.218	59.584 #

Data Path : Z:\pestpcbsrv\HPCHEM1\ECD_Q\Data\PQ012524\
 Data File : PQ065062.D
 Signal(s) : Signal #1: ECD1A.ch Signal #2: ECD2B.ch
 Acq On : 25 Jan 2024 13:28
 Operator : YP\AJ
 Sample : PB158618BS
 Misc :
 ALS Vial : 8 Sample Multiplier: 1

Instrument :
 ECD_Q
 ClientSampleId :
 PB158618BS

Integration File signal 1: autoint1.e
 Integration File signal 2: autoint2.e
 Quant Time: Jan 25 21:40:19 2024
 Quant Method : Z:\pestpcbsrv\HPCHEM1\ECD_Q\Method\PQ011724.M
 Quant Title : GC EXTRACTABLES
 QLast Update : Thu Jan 18 00:09:27 2024
 Response via : Initial Calibration
 Integrator: ChemStation

Volume Inj. : 2 µl
 Signal #1 Phase : ZB-MR1 Signal #2 Phase: ZB-MR2
 Signal #1 Info : 30Mx0.32mmx 0.50µ Signal #2 Info : 30M x 0.32mm x 0.25µm

	Compound	RT#1	RT#2	Resp#1	Resp#2	ng/ml	ng/ml
42)	L9 AR-1268-2	7.715	6.536	48975831	272.6E6	112.248	237.668 #
43)	L9 AR-1268-3	7.909f	6.742	2480735	7739478	6.814	7.857
44)	L9 AR-1268-4	8.243f	7.035	32782297	88345811	201.474	200.521
45)	L9 AR-1268-5	8.547f	7.303	11208287	29947690	9.791	10.133

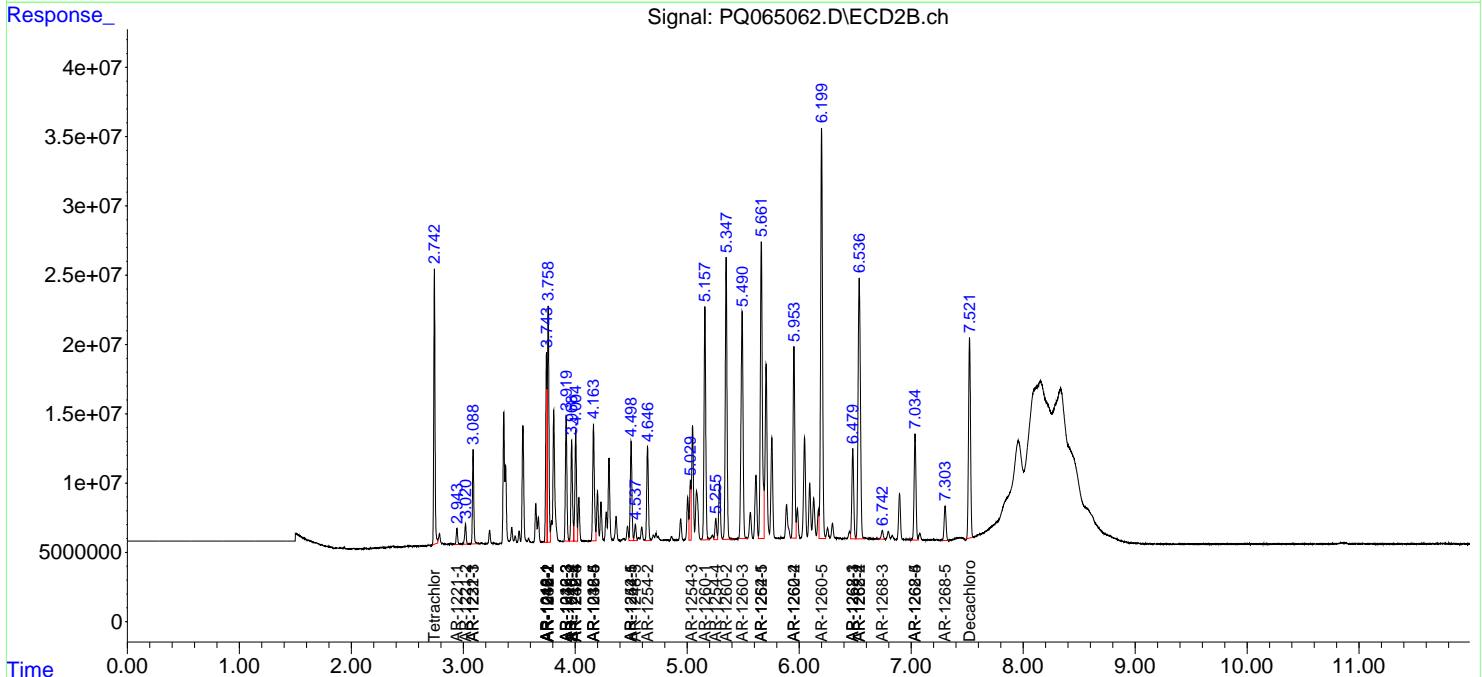
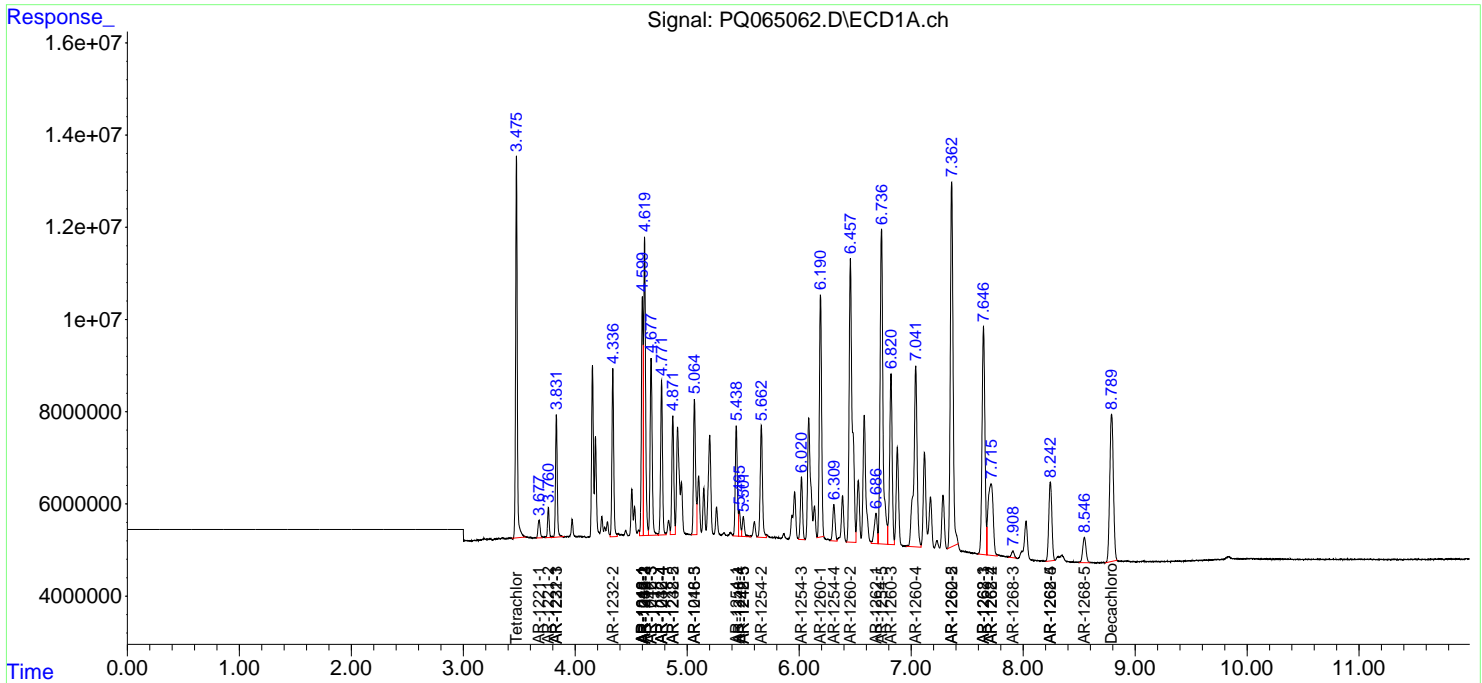
(f)=RT Delta > 1/2 Window (#)=Amounts differ by > 25% (m)=manual int.

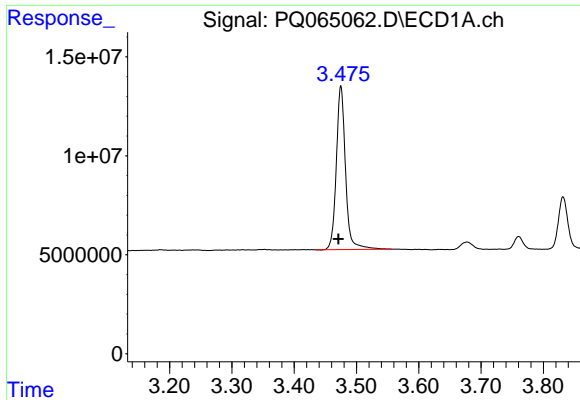
Data Path : Z:\pestpcbsrv\HPCHEM1\ECD_Q\Data\PQ012524\
 Data File : PQ065062.D
 Signal(s) : Signal #1: ECD1A.ch Signal #2: ECD2B.ch
 Acq On : 25 Jan 2024 13:28
 Operator : YP\AJ
 Sample : PB158618BS
 Misc :
 ALS Vial : 8 Sample Multiplier: 1

Instrument :
 ECD_Q
 ClientSampleId :
 PB158618BS

Integration File signal 1: autoint1.e
 Integration File signal 2: autoint2.e
 Quant Time: Jan 25 21:40:19 2024
 Quant Method : Z:\pestpcbsrv\HPCHEM1\ECD_Q\Method\PQ011724.M
 Quant Title : GC EXTRACTABLES
 QLast Update : Thu Jan 18 00:09:27 2024
 Response via : Initial Calibration
 Integrator: ChemStation

Volume Inj. : 2 µl
 Signal #1 Phase : ZB-MR1 Signal #2 Phase: ZB-MR2
 Signal #1 Info : 30Mx0.32mmx 0.50µ Signal #2 Info : 30M x 0.32mm x 0.25µm

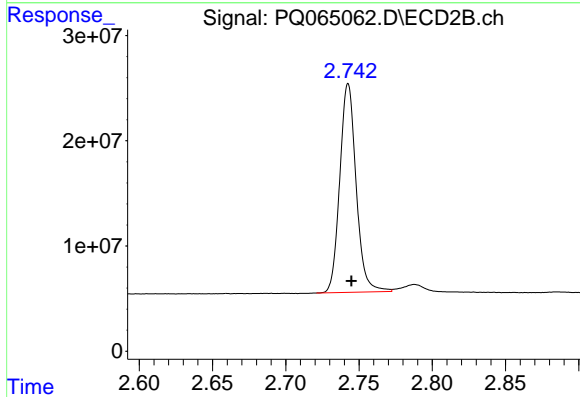




#1 Tetrachloro-m-xylene

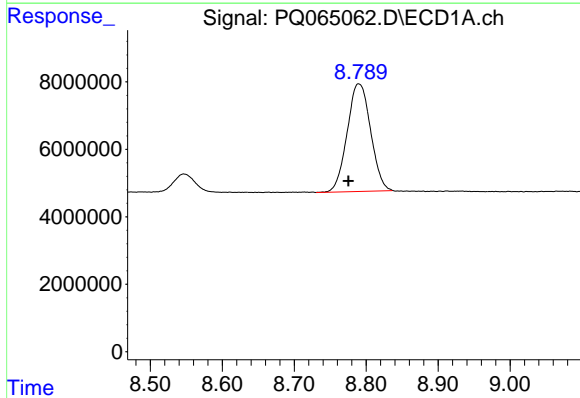
R.T.: 3.475 min
 Delta R.T.: 0.004 min
 Response: 84779654
 Conc: 22.76 ng/ml

Instrument :
 ECD_Q
 ClientSampleId :
 PB158618BS



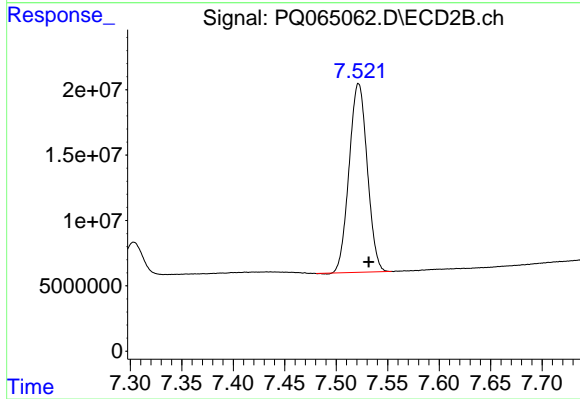
#1 Tetrachloro-m-xylene

R.T.: 2.743 min
 Delta R.T.: -0.002 min
 Response: 154232684
 Conc: 23.10 ng/ml



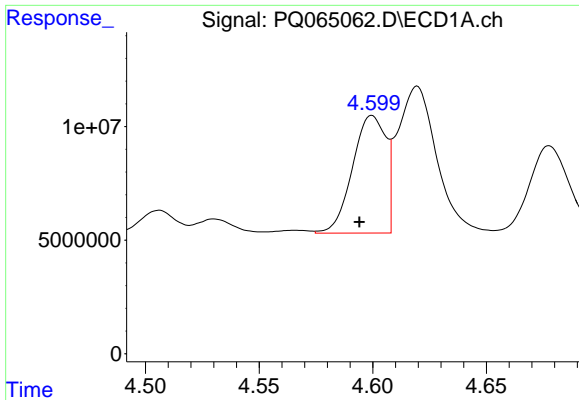
#2 Decachlorobiphenyl

R.T.: 8.790 min
 Delta R.T.: 0.015 min
 Response: 72105520
 Conc: 23.33 ng/ml



#2 Decachlorobiphenyl

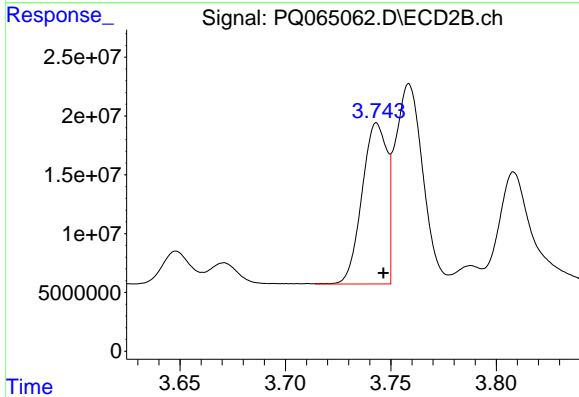
R.T.: 7.522 min
 Delta R.T.: -0.010 min
 Response: 177287849
 Conc: 24.39 ng/ml



#3 AR-1016-1

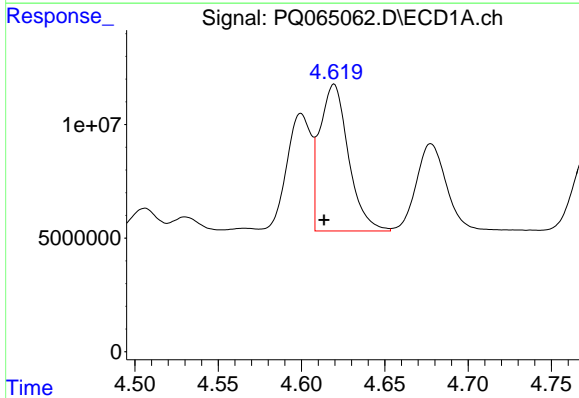
R.T.: 4.600 min
 Delta R.T.: 0.006 min
 Response: 52910711
 Conc: 438.52 ng/ml

Instrument :
 ECD_Q
 ClientSampleId :
 PB158618BS



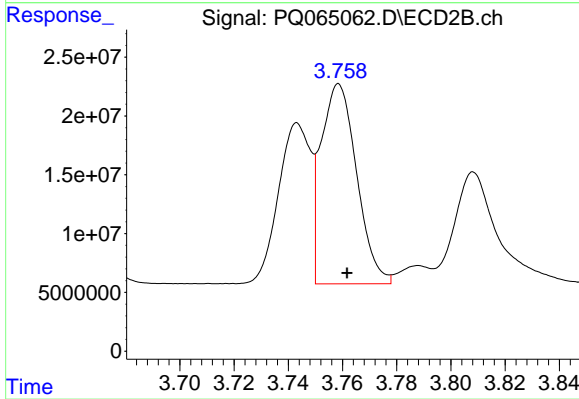
#3 AR-1016-1

R.T.: 3.743 min
 Delta R.T.: -0.003 min
 Response: 112429111
 Conc: 450.21 ng/ml



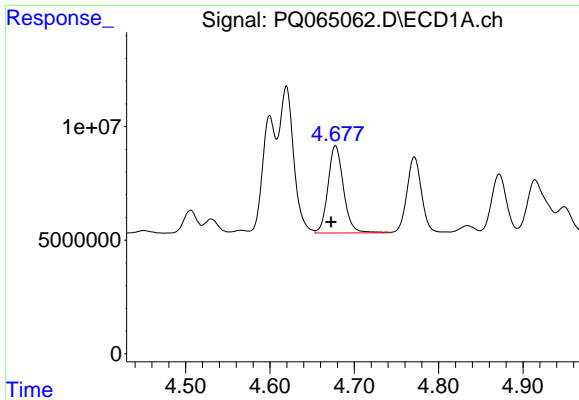
#4 AR-1016-2

R.T.: 4.620 min
 Delta R.T.: 0.006 min
 Response: 77280853
 Conc: 449.09 ng/ml



#4 AR-1016-2

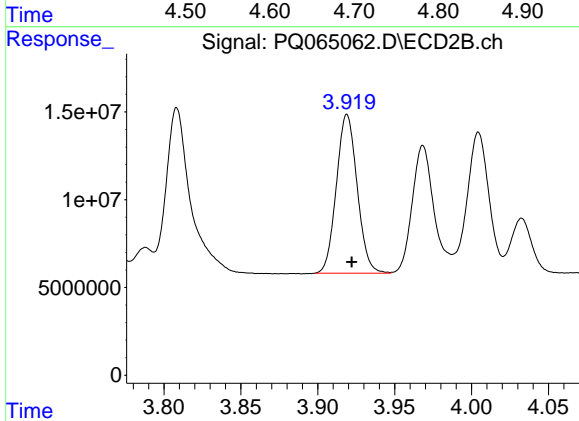
R.T.: 3.759 min
 Delta R.T.: -0.003 min
 Response: 155979106
 Conc: 453.23 ng/ml



#5 AR-1016-3

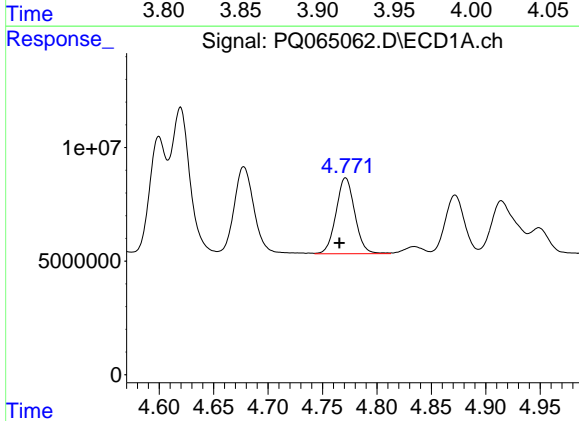
R.T.: 4.678 min
 Delta R.T.: 0.005 min
 Response: 49020079
 Conc: 446.12 ng/ml

Instrument :
 ECD_Q
 ClientSampleId :
 PB158618BS



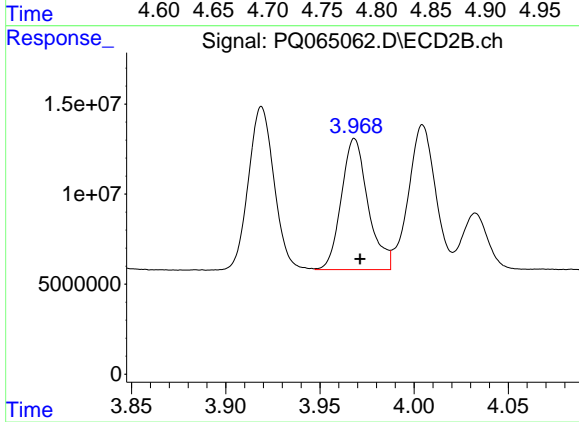
#5 AR-1016-3

R.T.: 3.919 min
 Delta R.T.: -0.003 min
 Response: 85299901
 Conc: 445.59 ng/ml



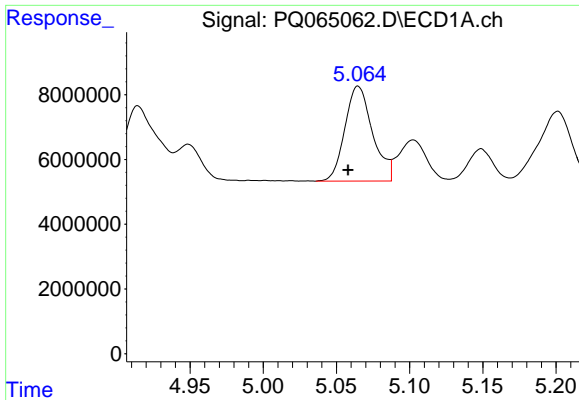
#6 AR-1016-4

R.T.: 4.771 min
 Delta R.T.: 0.006 min
 Response: 39991674
 Conc: 436.23 ng/ml



#6 AR-1016-4

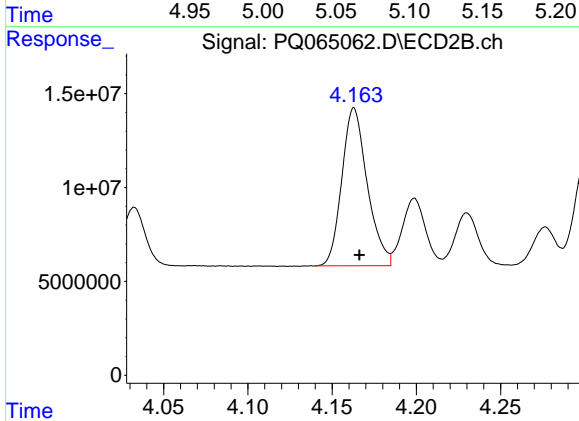
R.T.: 3.968 min
 Delta R.T.: -0.003 min
 Response: 71868743
 Conc: 446.77 ng/ml



#7 AR-1016-5

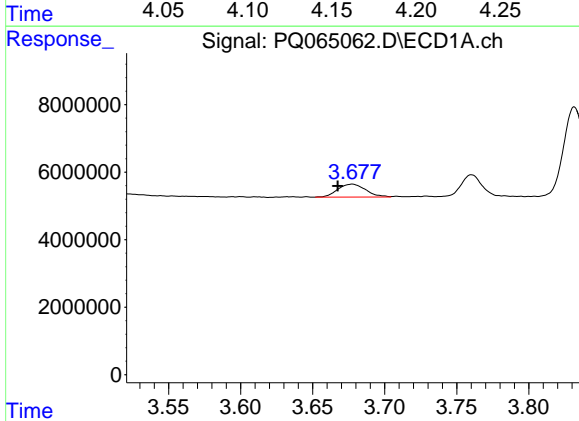
R.T.: 5.065 min
 Delta R.T.: 0.007 min
 Response: 38608819
 Conc: 438.86 ng/ml

Instrument :
 ECD_Q
 ClientSampleId :
 PB158618BS



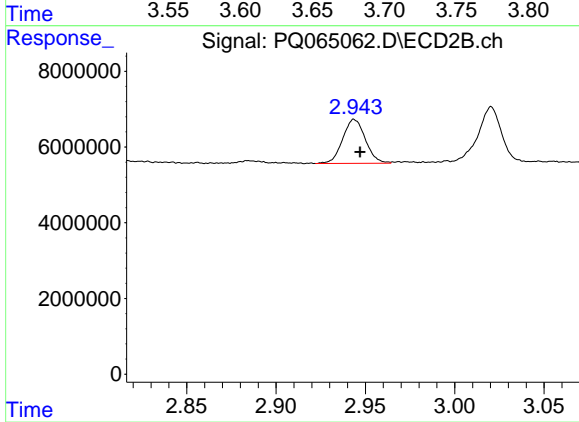
#7 AR-1016-5

R.T.: 4.163 min
 Delta R.T.: -0.003 min
 Response: 88279282
 Conc: 444.53 ng/ml



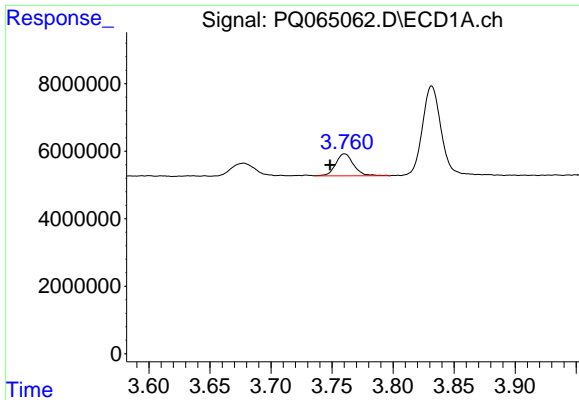
#8 AR-1221-1

R.T.: 3.677 min
 Delta R.T.: 0.010 min
 Response: 5150502
 Conc: 114.59 ng/ml



#8 AR-1221-1

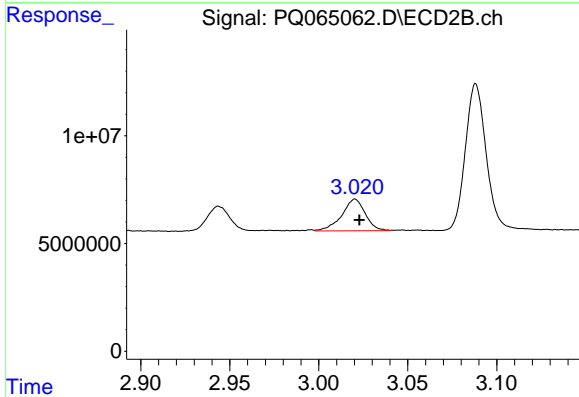
R.T.: 2.944 min
 Delta R.T.: -0.003 min
 Response: 10293781
 Conc: 108.22 ng/ml



#9 AR-1221-2

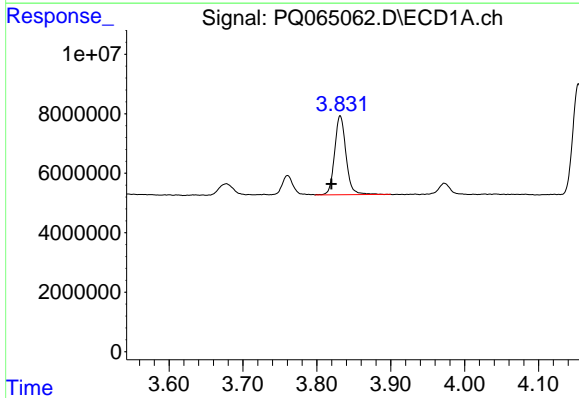
R.T.: 3.760 min
 Delta R.T.: 0.012 min
 Response: 6730541
 Conc: 206.66 ng/ml

Instrument :
 ECD_Q
 ClientSampleId :
 PB158618BS



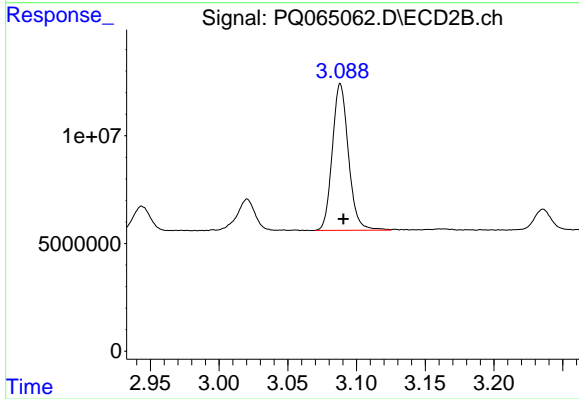
#9 AR-1221-2

R.T.: 3.020 min
 Delta R.T.: -0.002 min
 Response: 13502915
 Conc: 187.83 ng/ml



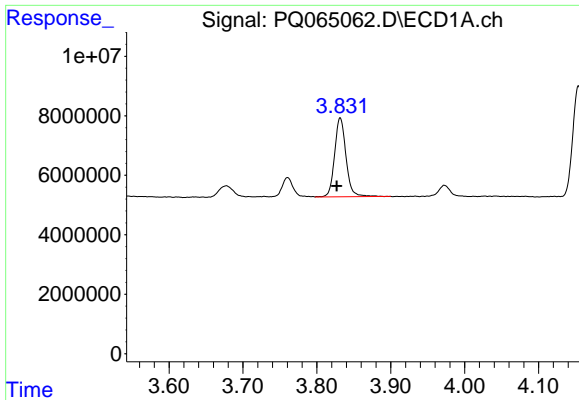
#10 AR-1221-3

R.T.: 3.832 min
 Delta R.T.: 0.012 min
 Response: 28284267
 Conc: 281.60 ng/ml



#10 AR-1221-3

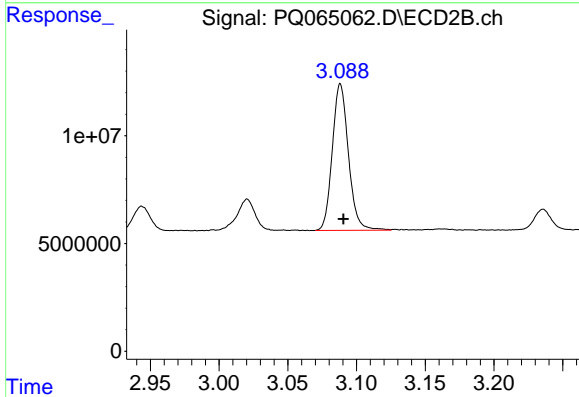
R.T.: 3.088 min
 Delta R.T.: -0.002 min
 Response: 55500536
 Conc: 284.05 ng/ml



#11 AR-1232-1

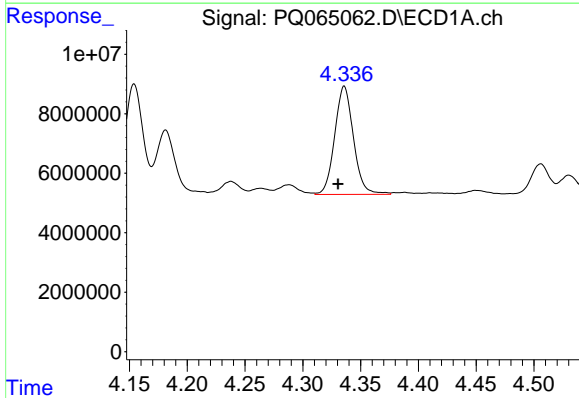
R.T.: 3.832 min
 Delta R.T.: 0.005 min
 Response: 28284267
 Conc: 335.81 ng/ml

Instrument :
 ECD_Q
 ClientSampleId :
 PB158618BS



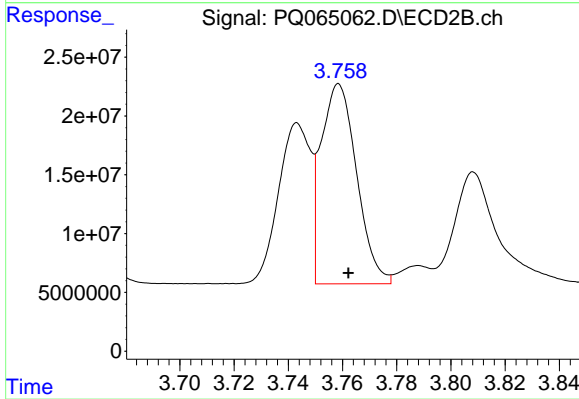
#11 AR-1232-1

R.T.: 3.088 min
 Delta R.T.: -0.002 min
 Response: 55500536
 Conc: 340.11 ng/ml



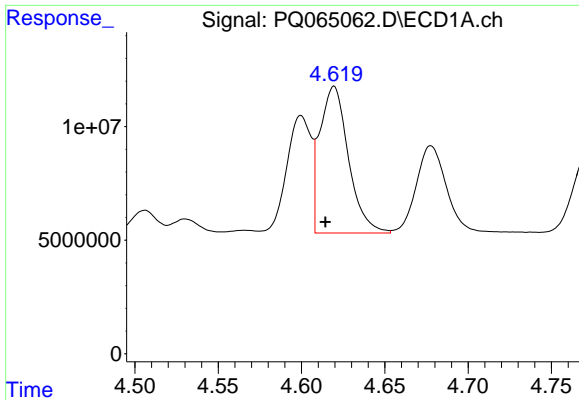
#12 AR-1232-2

R.T.: 4.336 min
 Delta R.T.: 0.006 min
 Response: 41006492
 Conc: 872.24 ng/ml



#12 AR-1232-2

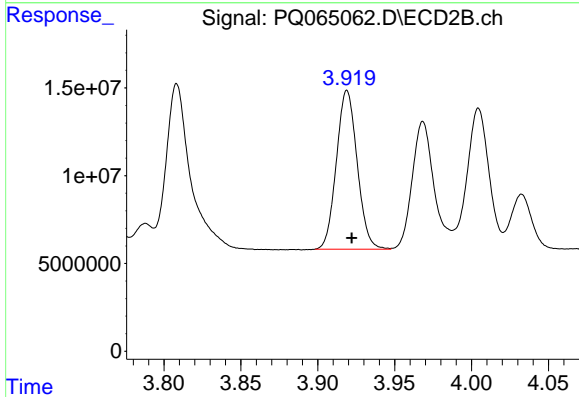
R.T.: 3.759 min
 Delta R.T.: -0.004 min
 Response: 155979106
 Conc: 920.55 ng/ml



#13 AR-1232-3

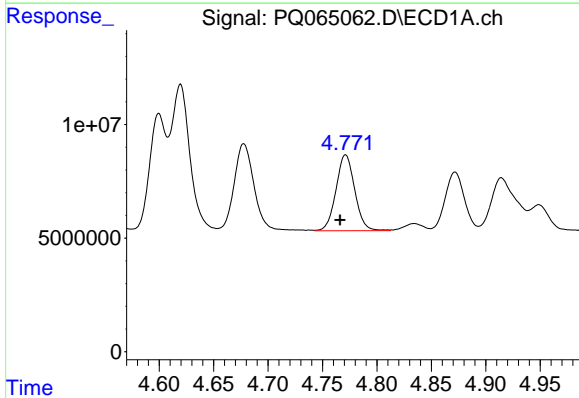
R.T.: 4.620 min
 Delta R.T.: 0.005 min
 Response: 77280853
 Conc: 898.12 ng/ml

Instrument :
 ECD_Q
 ClientSampleId :
 PB158618BS



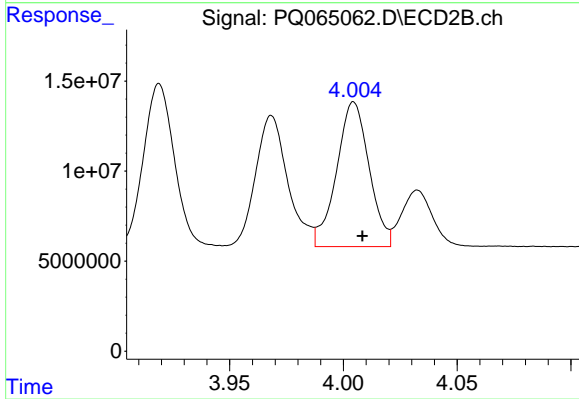
#13 AR-1232-3

R.T.: 3.919 min
 Delta R.T.: -0.003 min
 Response: 85299901
 Conc: 925.20 ng/ml



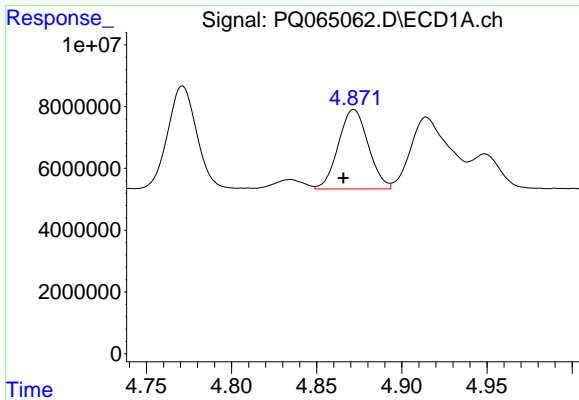
#14 AR-1232-4

R.T.: 4.771 min
 Delta R.T.: 0.005 min
 Response: 39991674
 Conc: 920.95 ng/ml



#14 AR-1232-4

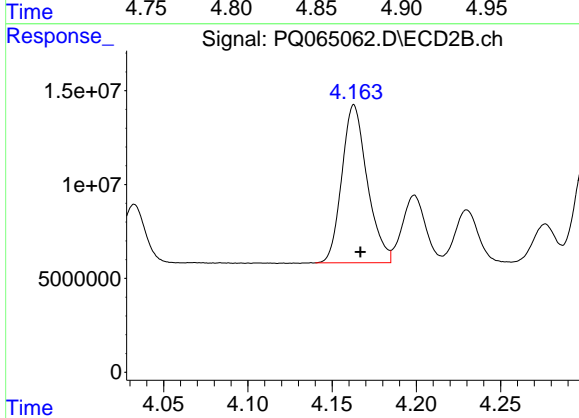
R.T.: 4.005 min
 Delta R.T.: -0.004 min
 Response: 80098665
 Conc: 1017.48 ng/ml



#15 AR-1232-5

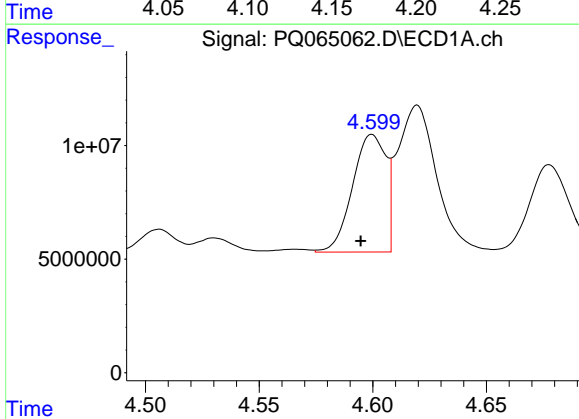
R.T.: 4.872 min
 Delta R.T.: 0.006 min
 Response: 31409974
 Conc: 1044.56 ng/ml

Instrument :
 ECD_Q
 ClientSampleId :
 PB158618BS



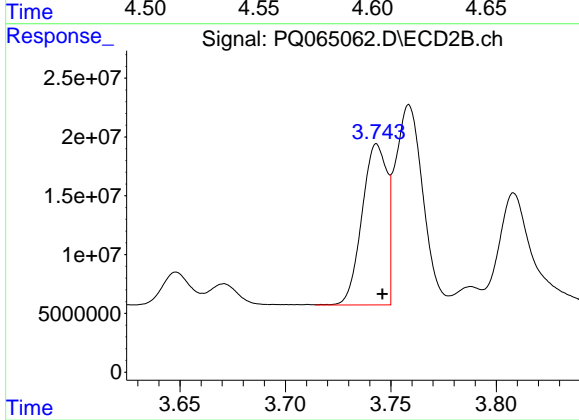
#15 AR-1232-5

R.T.: 4.163 min
 Delta R.T.: -0.004 min
 Response: 88279282
 Conc: 982.57 ng/ml



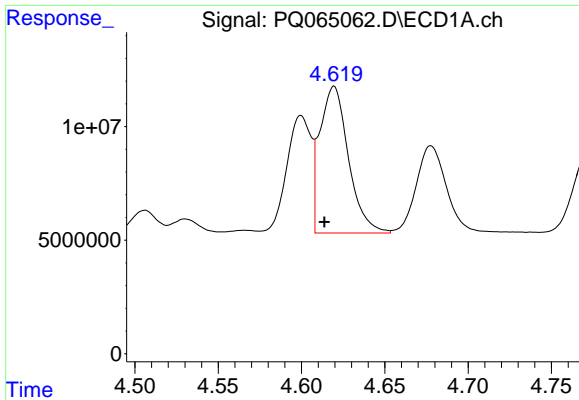
#16 AR-1242-1

R.T.: 4.600 min
 Delta R.T.: 0.005 min
 Response: 52910711
 Conc: 521.09 ng/ml



#16 AR-1242-1

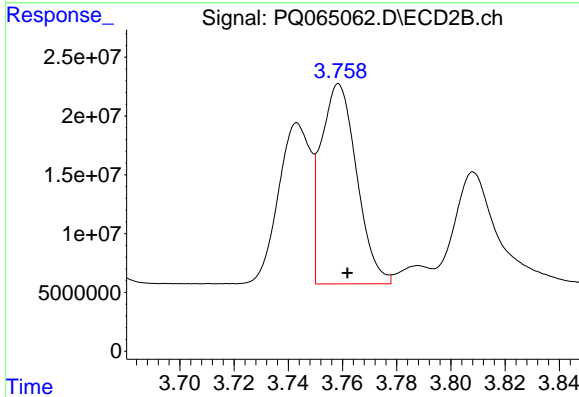
R.T.: 3.743 min
 Delta R.T.: -0.003 min
 Response: 112429111
 Conc: 527.28 ng/ml



#17 AR-1242-2

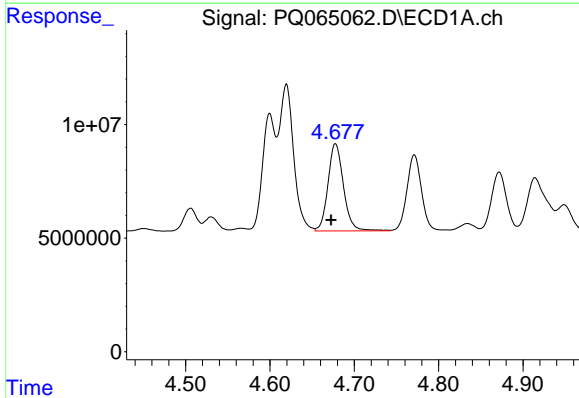
R.T.: 4.620 min
 Delta R.T.: 0.006 min
 Response: 77280853
 Conc: 521.90 ng/ml

Instrument :
 ECD_Q
 ClientSampleId :
 PB158618BS



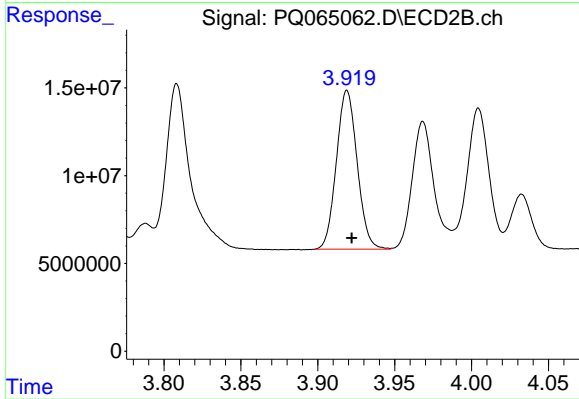
#17 AR-1242-2

R.T.: 3.759 min
 Delta R.T.: -0.003 min
 Response: 155979106
 Conc: 536.50 ng/ml



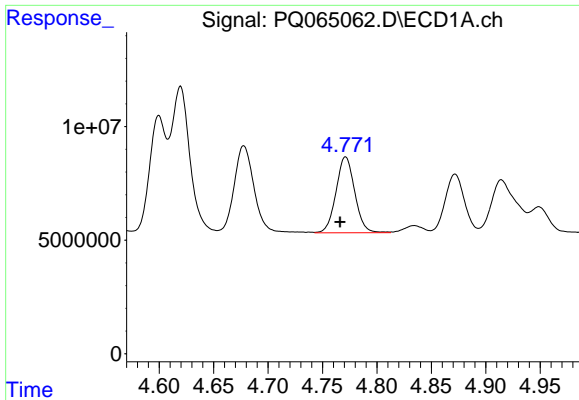
#18 AR-1242-3

R.T.: 4.678 min
 Delta R.T.: 0.005 min
 Response: 49020079
 Conc: 514.52 ng/ml



#18 AR-1242-3

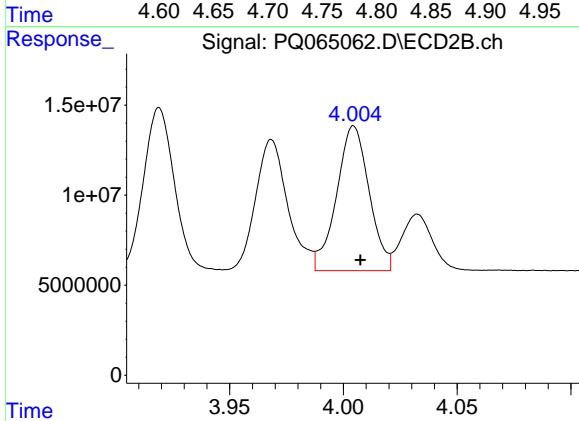
R.T.: 3.919 min
 Delta R.T.: -0.003 min
 Response: 85299901
 Conc: 527.70 ng/ml



#19 AR-1242-4

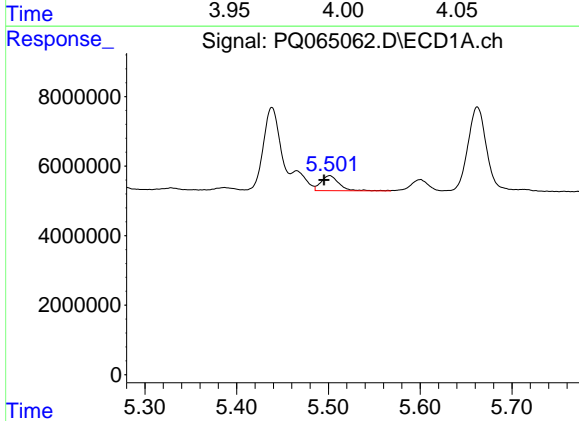
R.T.: 4.771 min
 Delta R.T.: 0.005 min
 Response: 39991674
 Conc: 518.87 ng/ml

Instrument :
 ECD_Q
 ClientSampleId :
 PB158618BS



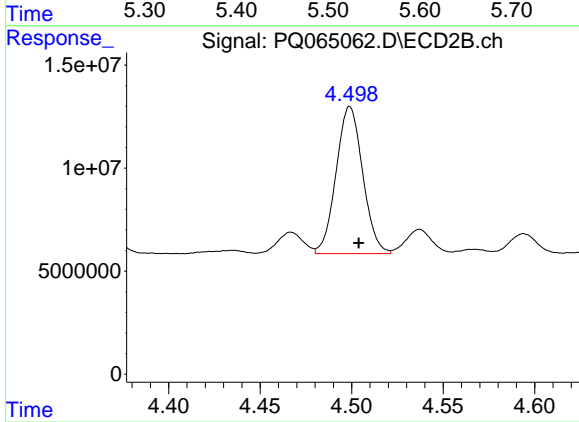
#19 AR-1242-4

R.T.: 4.005 min
 Delta R.T.: -0.003 min
 Response: 80098665
 Conc: 524.87 ng/ml



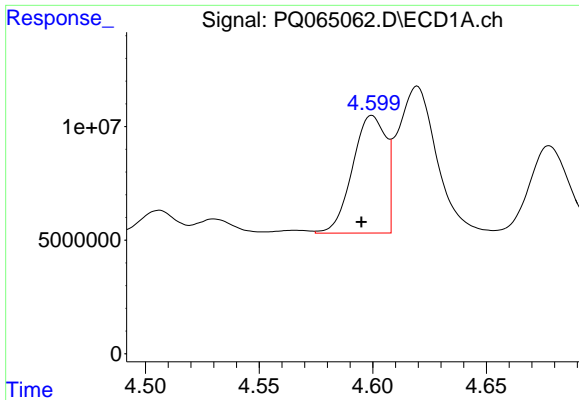
#20 AR-1242-5

R.T.: 5.501 min
 Delta R.T.: 0.006 min
 Response: 5856293
 Conc: 71.29 ng/ml



#20 AR-1242-5

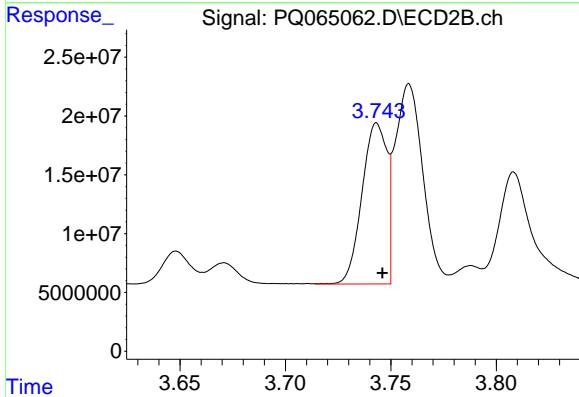
R.T.: 4.499 min
 Delta R.T.: -0.005 min
 Response: 72338865
 Conc: 355.69 ng/ml



#21 AR-1248-1

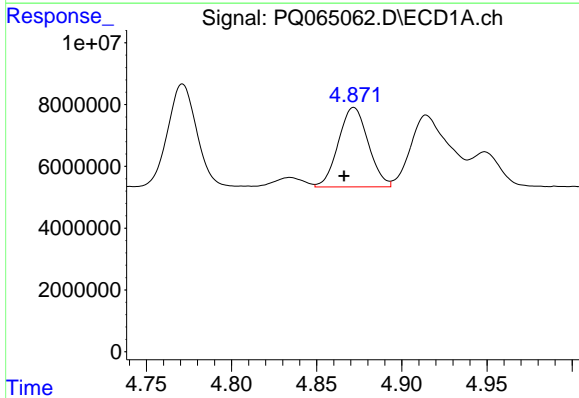
R.T.: 4.600 min
 Delta R.T.: 0.005 min
 Response: 52910711
 Conc: 681.76 ng/ml

Instrument :
 ECD_Q
 ClientSampleId :
 PB158618BS



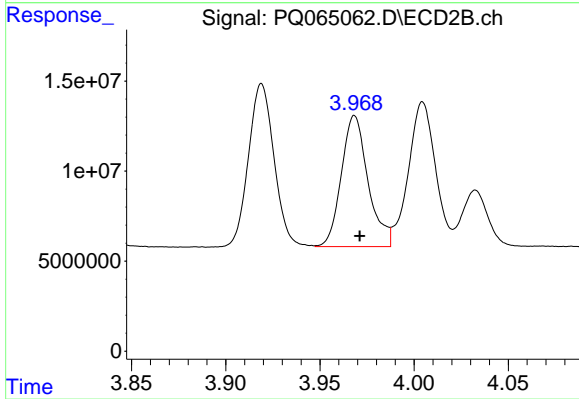
#21 AR-1248-1

R.T.: 3.743 min
 Delta R.T.: -0.003 min
 Response: 112429111
 Conc: 669.70 ng/ml



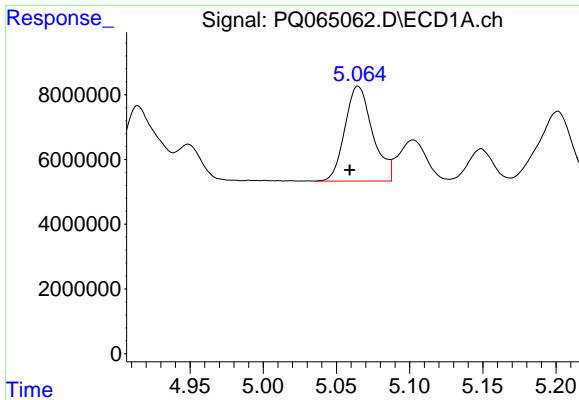
#22 AR-1248-2

R.T.: 4.872 min
 Delta R.T.: 0.006 min
 Response: 31409974
 Conc: 303.84 ng/ml



#22 AR-1248-2

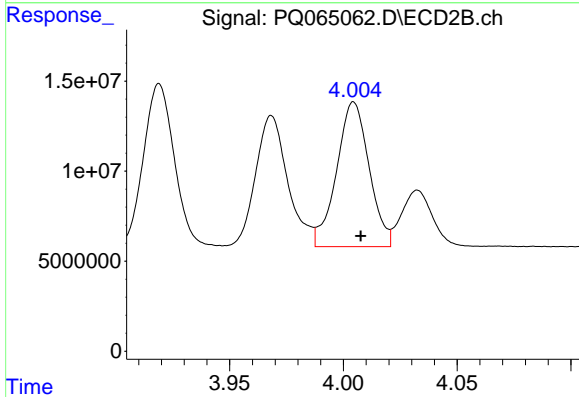
R.T.: 3.968 min
 Delta R.T.: -0.003 min
 Response: 71868743
 Conc: 306.65 ng/ml



#23 AR-1248-3

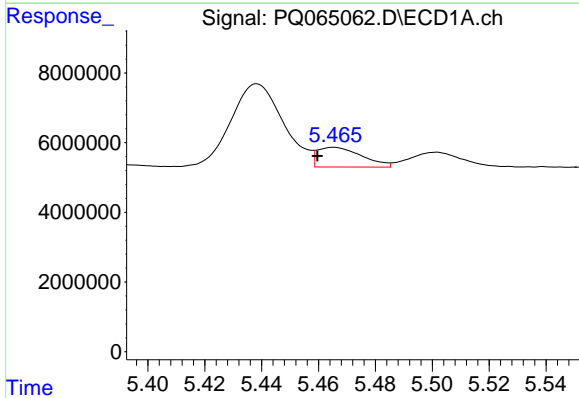
R.T.: 5.065 min
 Delta R.T.: 0.006 min
 Response: 38608819
 Conc: 317.74 ng/ml

Instrument :
 ECD_Q
 ClientSampleId :
 PB158618BS



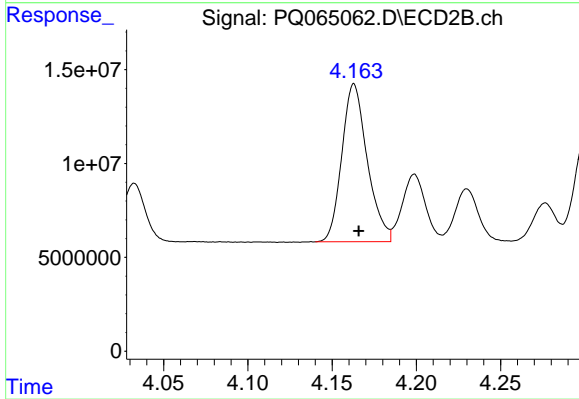
#23 AR-1248-3

R.T.: 4.005 min
 Delta R.T.: -0.003 min
 Response: 80098665
 Conc: 356.22 ng/ml



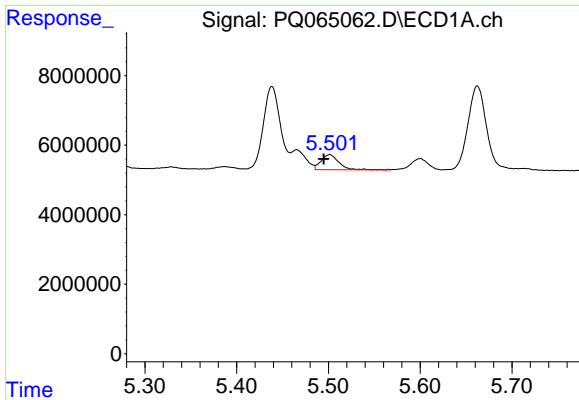
#24 AR-1248-4

R.T.: 5.465 min
 Delta R.T.: 0.006 min
 Response: 6141796
 Conc: 43.10 ng/ml



#24 AR-1248-4

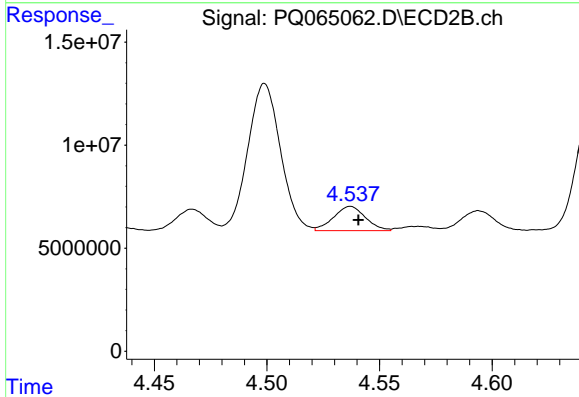
R.T.: 4.163 min
 Delta R.T.: -0.003 min
 Response: 88279282
 Conc: 316.72 ng/ml



#25 AR-1248-5

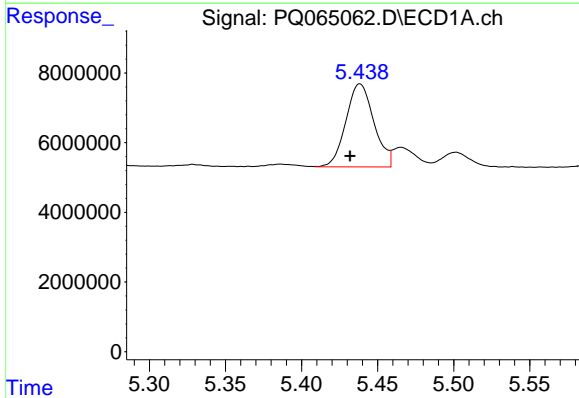
R.T.: 5.501 min
 Delta R.T.: 0.006 min
 Response: 5856293
 Conc: 41.57 ng/ml

Instrument :
 ECD_Q
 ClientSampleId :
 PB158618BS



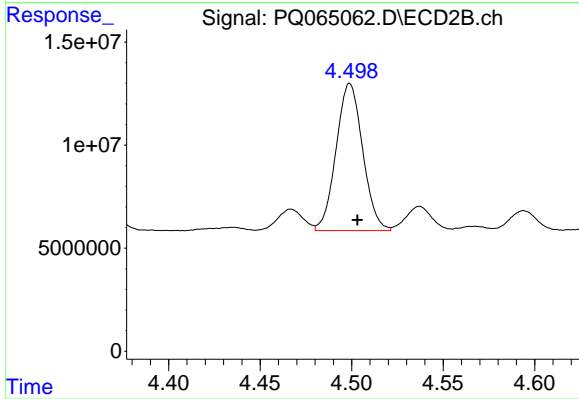
#25 AR-1248-5

R.T.: 4.537 min
 Delta R.T.: -0.003 min
 Response: 11654557
 Conc: 40.74 ng/ml



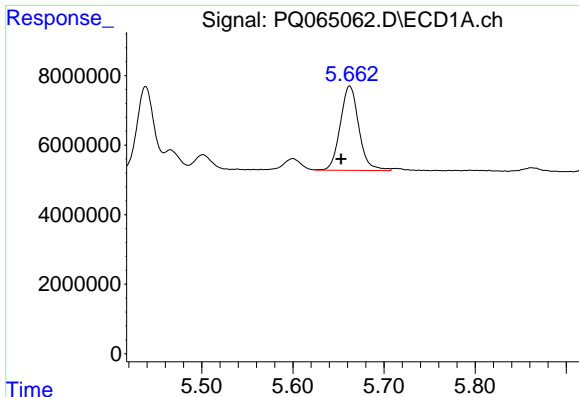
#26 AR-1254-1

R.T.: 5.438 min
 Delta R.T.: 0.007 min
 Response: 30613837
 Conc: 218.77 ng/ml



#26 AR-1254-1

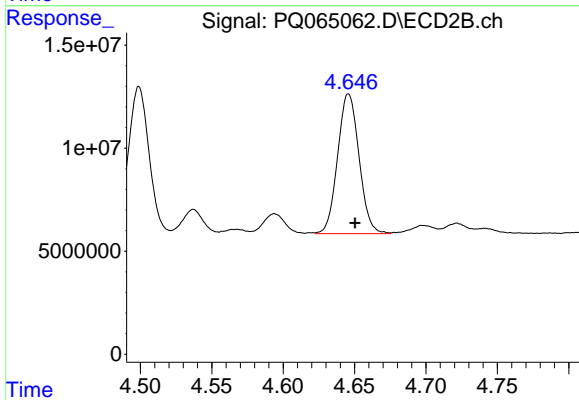
R.T.: 4.499 min
 Delta R.T.: -0.004 min
 Response: 72338865
 Conc: 173.17 ng/ml



#27 AR-1254-2

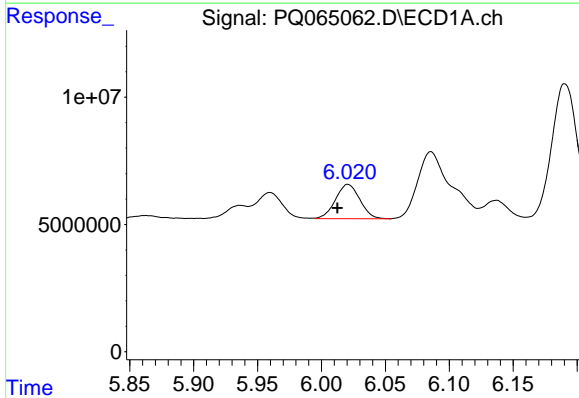
R.T.: 5.662 min
 Delta R.T.: 0.009 min
 Response: 34353929
 Conc: 158.66 ng/ml

Instrument :
 ECD_Q
 ClientSampleId :
 PB158618BS



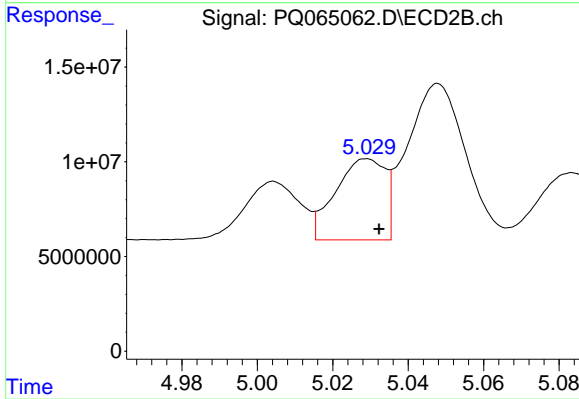
#27 AR-1254-2

R.T.: 4.646 min
 Delta R.T.: -0.005 min
 Response: 70742167
 Conc: 192.15 ng/ml



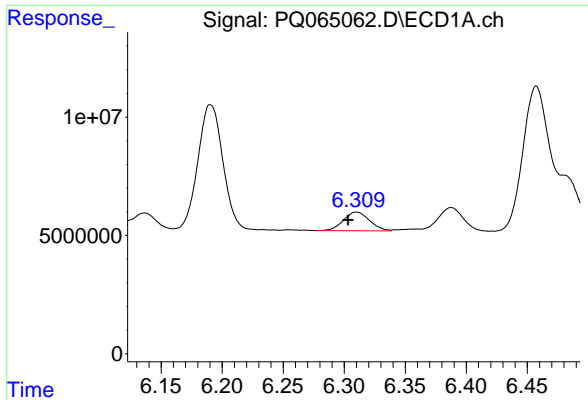
#28 AR-1254-3

R.T.: 6.021 min
 Delta R.T.: 0.008 min
 Response: 17888877
 Conc: 78.85 ng/ml



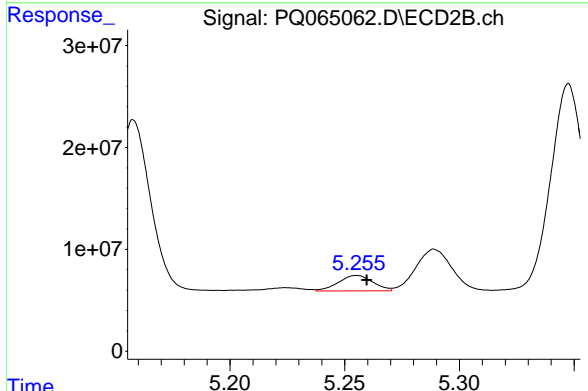
#28 AR-1254-3

R.T.: 5.029 min
 Delta R.T.: -0.003 min
 Response: 39135045
 Conc: 66.87 ng/ml

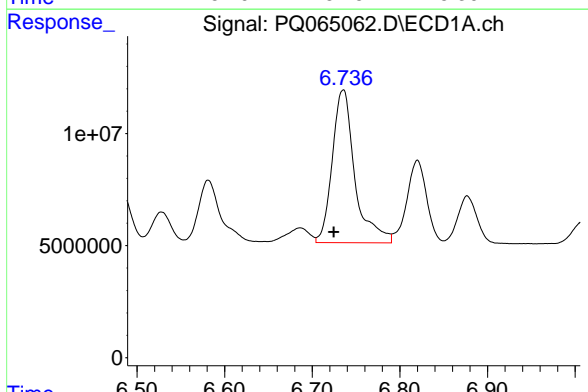


#29 AR-1254-4
 R.T.: 6.310 min
 Delta R.T.: 0.007 min
 Response: 11798491
 Conc: 70.01 ng/ml

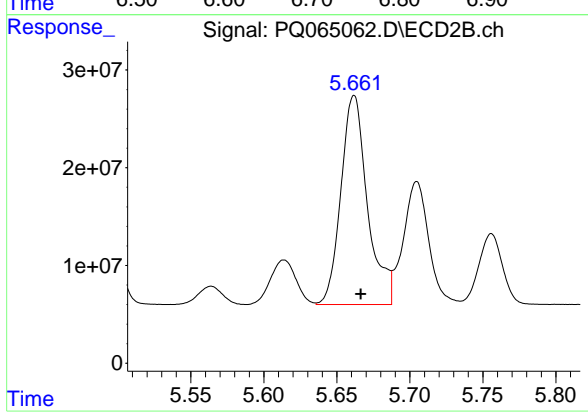
Instrument :
 ECD_Q
 ClientSampleId :
 PB158618BS



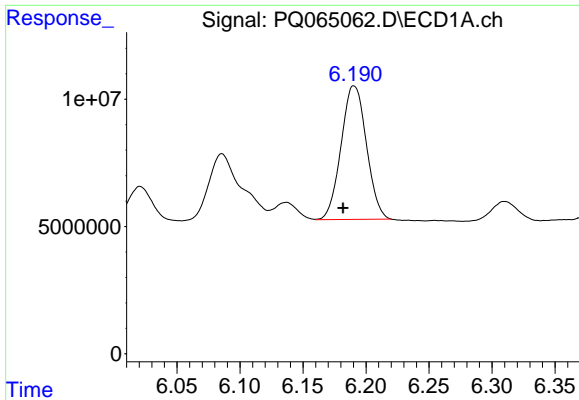
#29 AR-1254-4
 R.T.: 5.255 min
 Delta R.T.: -0.004 min
 Response: 15869597
 Conc: 41.01 ng/ml



#30 AR-1254-5
 R.T.: 6.735 min
 Delta R.T.: 0.011 min
 Response: 122620473
 Conc: 635.72 ng/ml



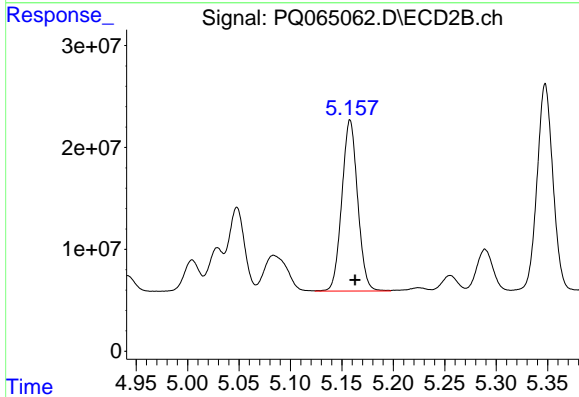
#30 AR-1254-5
 R.T.: 5.662 min
 Delta R.T.: -0.004 min
 Response: 271514112
 Conc: 496.31 ng/ml



#31 AR-1260-1

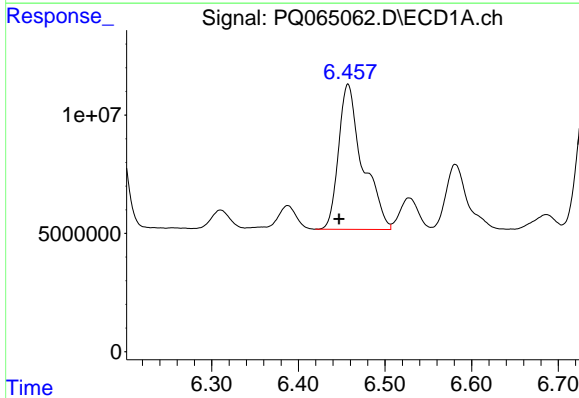
R.T.: 6.190 min
 Delta R.T.: 0.009 min
 Response: 73379027
 Conc: 416.69 ng/ml

Instrument :
 ECD_Q
 ClientSampleId :
 PB158618BS



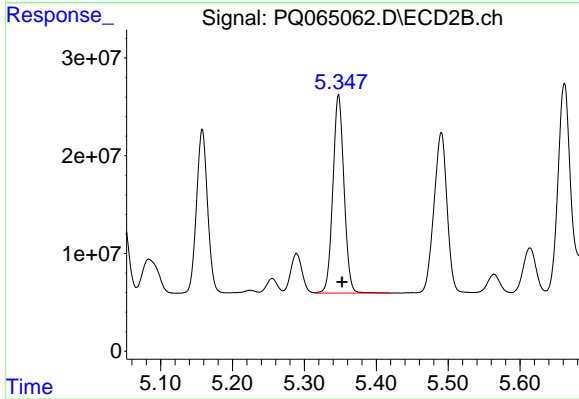
#31 AR-1260-1

R.T.: 5.158 min
 Delta R.T.: -0.005 min
 Response: 180040037
 Conc: 447.36 ng/ml



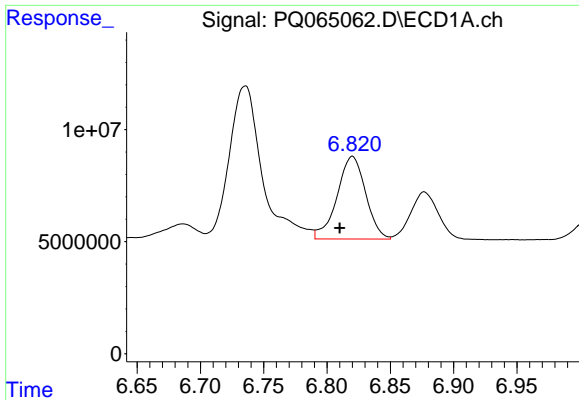
#32 AR-1260-2

R.T.: 6.457 min
 Delta R.T.: 0.010 min
 Response: 118554347
 Conc: 518.98 ng/ml



#32 AR-1260-2

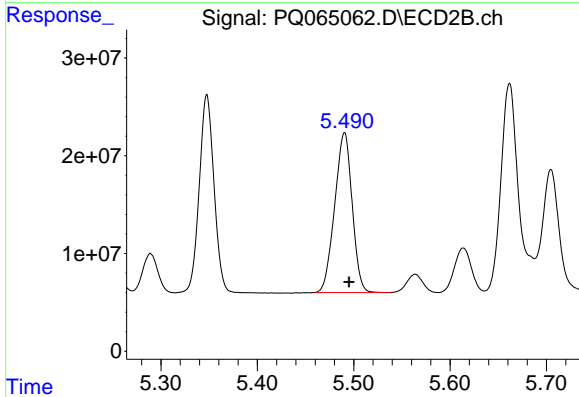
R.T.: 5.348 min
 Delta R.T.: -0.005 min
 Response: 218292190
 Conc: 446.36 ng/ml



#33 AR-1260-3

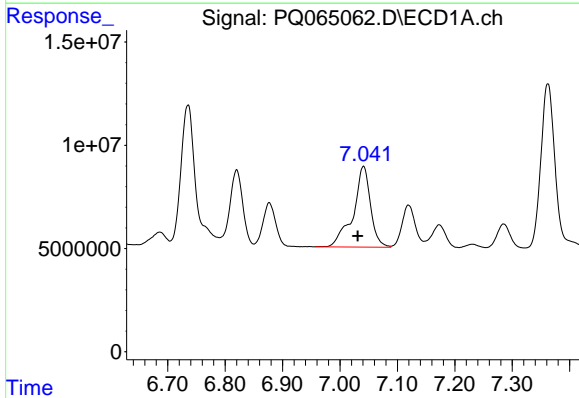
R.T.: 6.820 min
 Delta R.T.: 0.010 min
 Response: 58027046
 Conc: 361.41 ng/ml

Instrument :
 ECD_Q
 ClientSampleId :
 PB158618BS



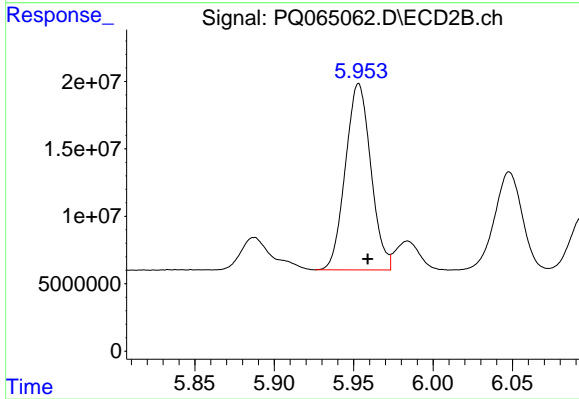
#33 AR-1260-3

R.T.: 5.491 min
 Delta R.T.: -0.005 min
 Response: 205673768
 Conc: 429.99 ng/ml



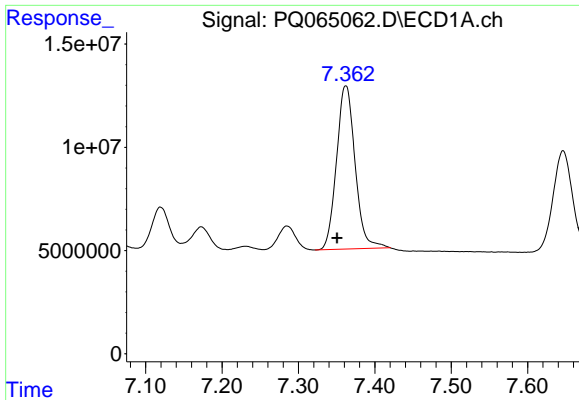
#34 AR-1260-4

R.T.: 7.041 min
 Delta R.T.: 0.010 min
 Response: 82354317
 Conc: 463.08 ng/ml



#34 AR-1260-4

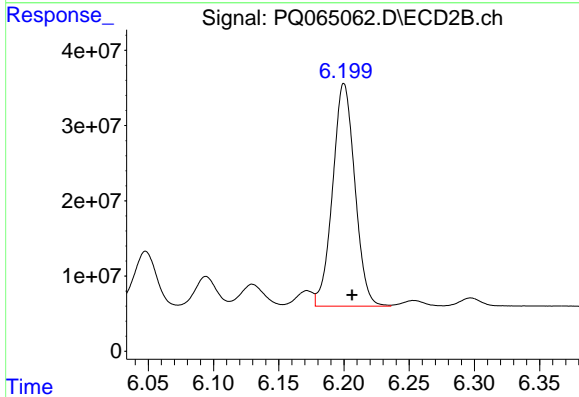
R.T.: 5.953 min
 Delta R.T.: -0.006 min
 Response: 153978881
 Conc: 395.72 ng/ml



#35 AR-1260-5

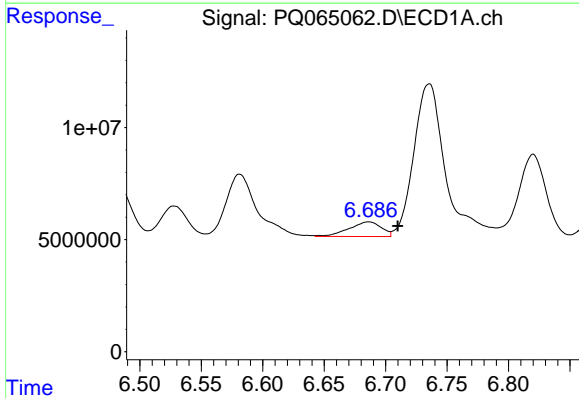
R.T.: 7.362 min
 Delta R.T.: 0.011 min
 Response: 133565250
 Conc: 363.81 ng/ml

Instrument :
 ECD_Q
 ClientSampleId :
 PB158618BS



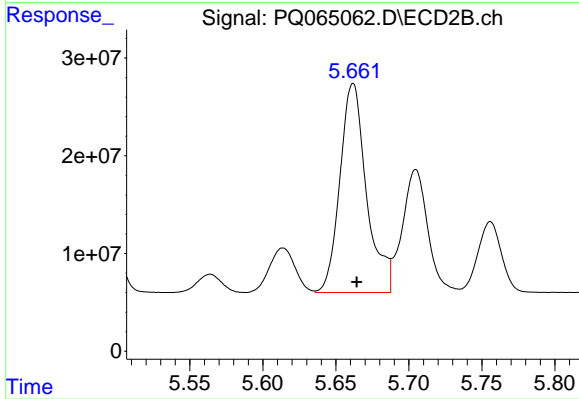
#35 AR-1260-5

R.T.: 6.200 min
 Delta R.T.: -0.006 min
 Response: 350915069
 Conc: 402.08 ng/ml



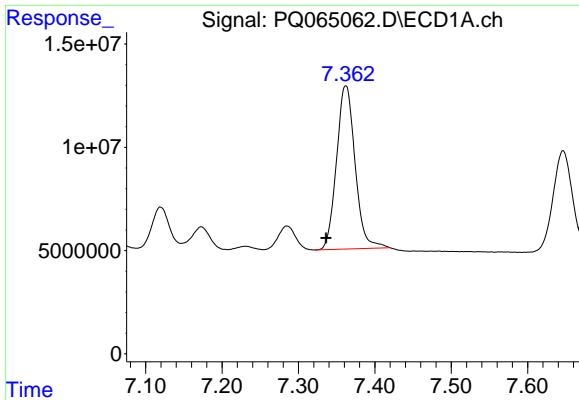
#36 AR-1262-1

R.T.: 6.686 min
 Delta R.T.: -0.024 min
 Response: 12030381
 Conc: 66.04 ng/ml



#36 AR-1262-1

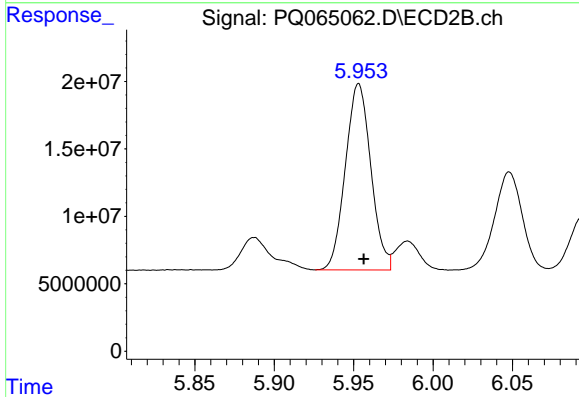
R.T.: 5.662 min
 Delta R.T.: -0.003 min
 Response: 271514112
 Conc: 761.17 ng/ml



#37 AR-1262-2

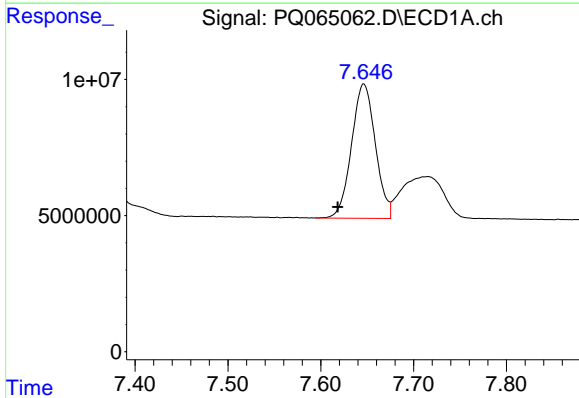
R.T.: 7.362 min
Delta R.T.: 0.026 min
Response: 133565250
Conc: 277.49 ng/ml

Instrument :
ECD_Q
ClientSampleId :
PB158618BS



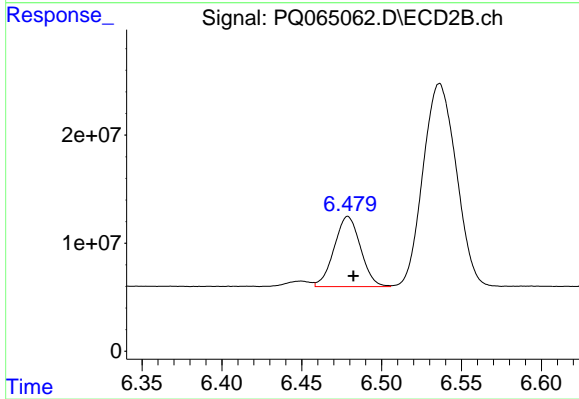
#37 AR-1262-2

R.T.: 5.953 min
Delta R.T.: -0.003 min
Response: 153978881
Conc: 291.35 ng/ml



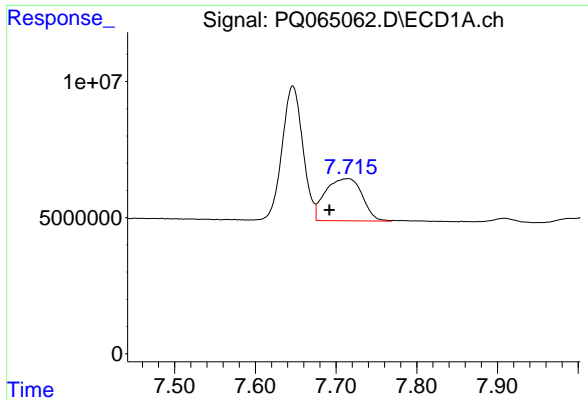
#38 AR-1262-3

R.T.: 7.646 min
Delta R.T.: 0.028 min
Response: 87878194
Conc: 290.85 ng/ml



#38 AR-1262-3

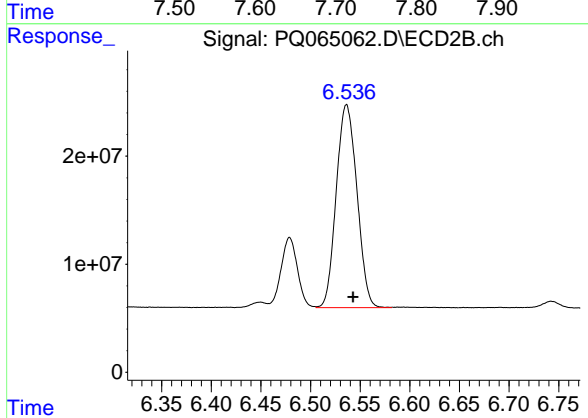
R.T.: 6.479 min
Delta R.T.: -0.003 min
Response: 74633220
Conc: 160.79 ng/ml



#39 AR-1262-4

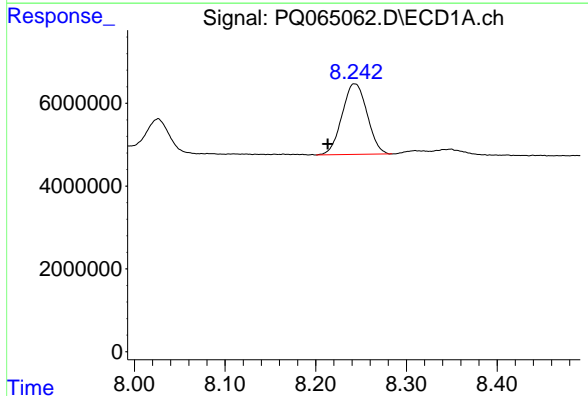
R.T.: 7.715 min
 Delta R.T.: 0.024 min
 Response: 48975831
 Conc: 209.31 ng/ml

Instrument :
 ECD_Q
 ClientSampleId :
 PB158618BS



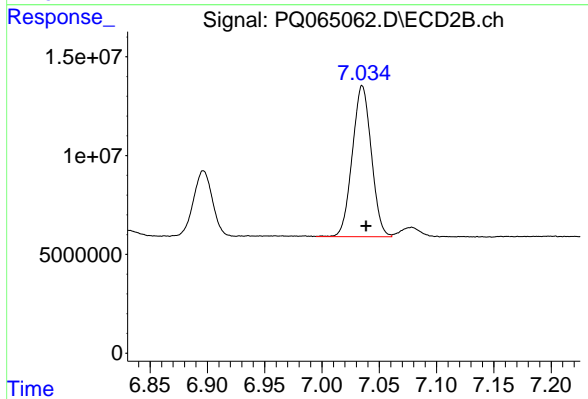
#39 AR-1262-4

R.T.: 6.536 min
 Delta R.T.: -0.006 min
 Response: 272647265
 Conc: 319.35 ng/ml



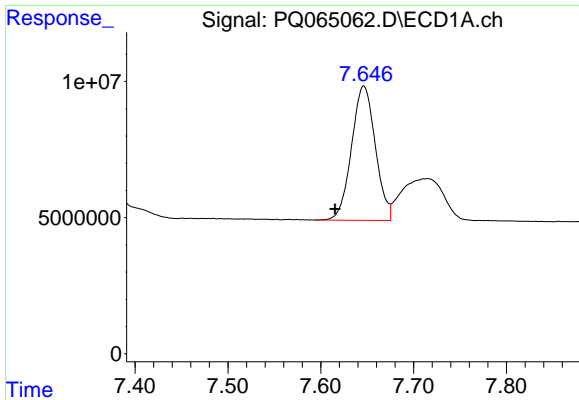
#40 AR-1262-5

R.T.: 8.243 min
 Delta R.T.: 0.030 min
 Response: 32782297
 Conc: 204.40 ng/ml



#40 AR-1262-5

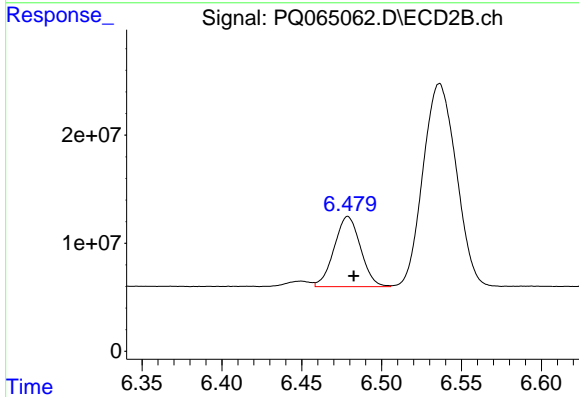
R.T.: 7.035 min
 Delta R.T.: -0.003 min
 Response: 88345811
 Conc: 213.65 ng/ml



#41 AR-1268-1

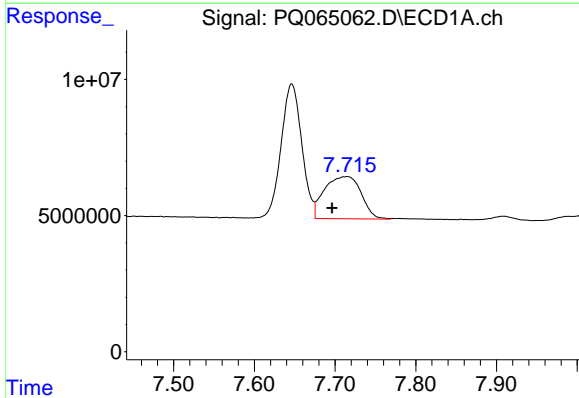
R.T.: 7.646 min
 Delta R.T.: 0.031 min
 Response: 87878194
 Conc: 183.22 ng/ml

Instrument :
 ECD_Q
 ClientSampleId :
 PB158618BS



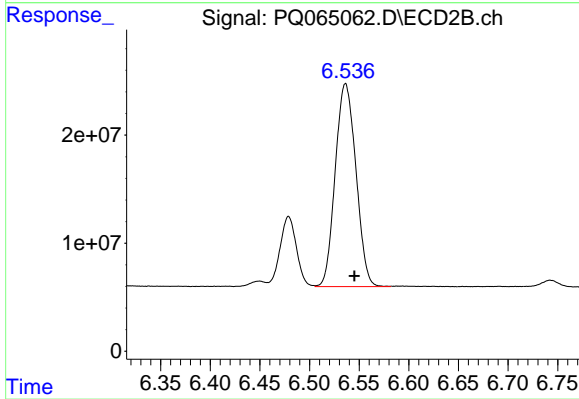
#41 AR-1268-1

R.T.: 6.479 min
 Delta R.T.: -0.004 min
 Response: 74633220
 Conc: 59.58 ng/ml



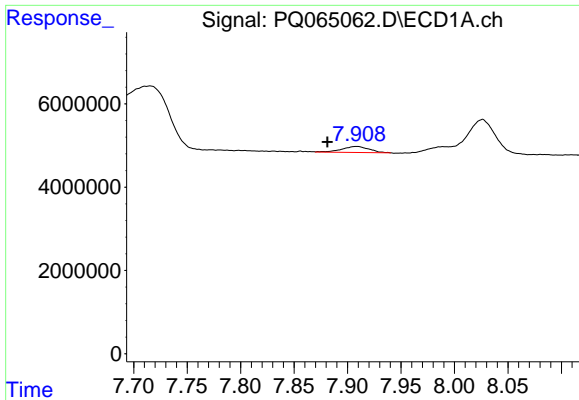
#42 AR-1268-2

R.T.: 7.715 min
 Delta R.T.: 0.019 min
 Response: 48975831
 Conc: 112.25 ng/ml



#42 AR-1268-2

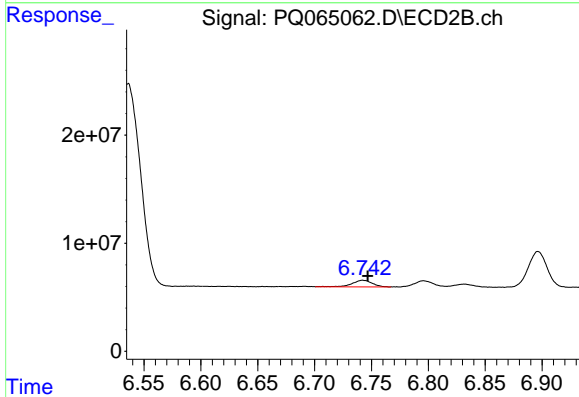
R.T.: 6.536 min
 Delta R.T.: -0.009 min
 Response: 272647265
 Conc: 237.67 ng/ml



#43 AR-1268-3

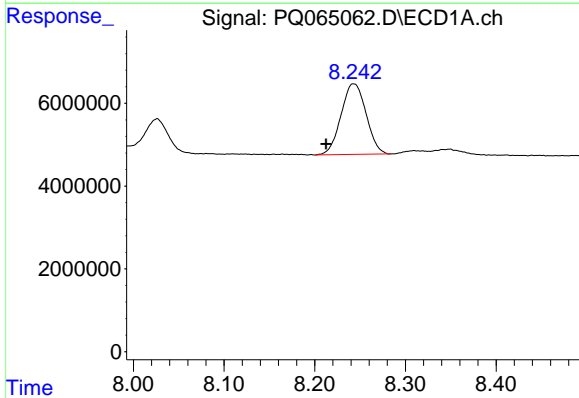
R.T.: 7.909 min
 Delta R.T.: 0.027 min
 Response: 2480735
 Conc: 6.81 ng/ml

Instrument :
 ECD_Q
 ClientSampleId :
 PB158618BS



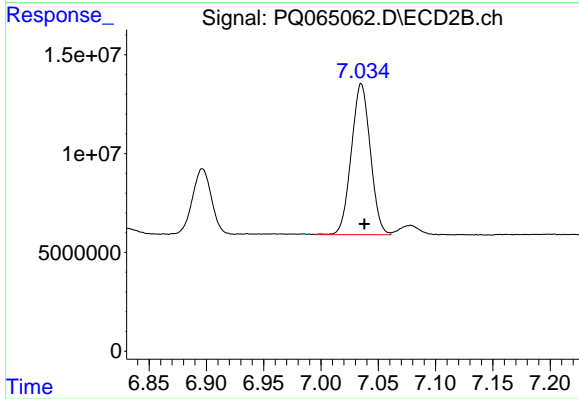
#43 AR-1268-3

R.T.: 6.742 min
 Delta R.T.: -0.004 min
 Response: 7739478
 Conc: 7.86 ng/ml



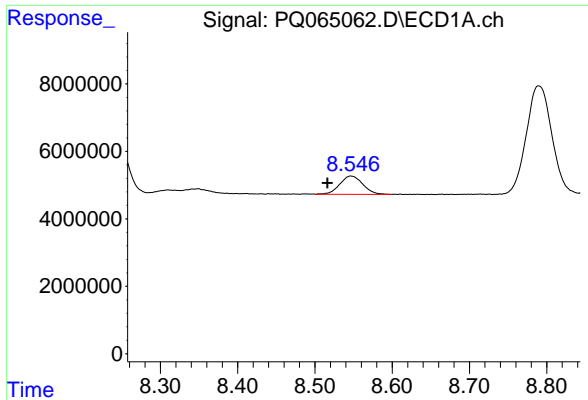
#44 AR-1268-4

R.T.: 8.243 min
 Delta R.T.: 0.030 min
 Response: 32782297
 Conc: 201.47 ng/ml



#44 AR-1268-4

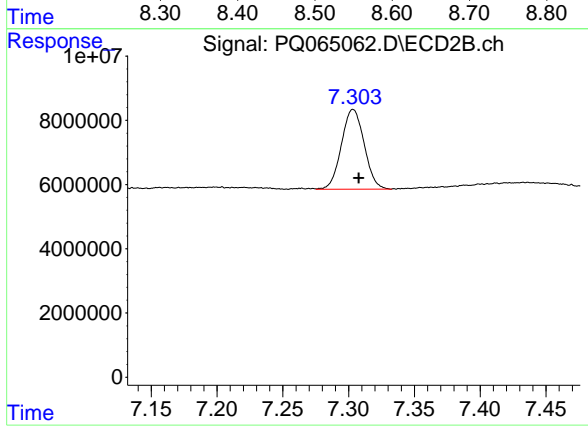
R.T.: 7.035 min
 Delta R.T.: -0.003 min
 Response: 88345811
 Conc: 200.52 ng/ml



#45 AR-1268-5

R.T.: 8.547 min
 Delta R.T.: 0.031 min
 Response: 11208287
 Conc: 9.79 ng/ml

Instrument :
 ECD_Q
 ClientSampleId :
 PB158618BS



#45 AR-1268-5

R.T.: 7.303 min
 Delta R.T.: -0.004 min
 Response: 29947690
 Conc: 10.13 ng/ml