

Data Path : Z:\pestpcbsrv\HPCHEM1\ECD\_Q\Data\PQ012524\  
 Data File : PQ065070.D  
 Signal(s) : Signal #1: ECD1A.ch Signal #2: ECD2B.ch  
 Acq On : 25 Jan 2024 15:55  
 Operator : YP\AJ  
 Sample : P1244-01  
 Misc :  
 ALS Vial : 16 Sample Multiplier: 1

**Instrument :**  
 ECD\_Q  
**ClientSampleId :**  
 69-TP-3

**Manual Integrations**  
**APPROVED**

Reviewed By :Ankita Jodhani 01/26/2024  
 Supervised By :Sohil Jodhani 01/26/2024

Integration File signal 1: autoint1.e  
 Integration File signal 2: autoint2.e  
 Quant Time: Jan 25 21:51:03 2024  
 Quant Method : Z:\pestpcbsrv\HPCHEM1\ECD\_Q\Method\PQ011724.M  
 Quant Title : GC EXTRACTABLES  
 QLast Update : Thu Jan 18 00:09:27 2024  
 Response via : Initial Calibration  
 Integrator: ChemStation

Volume Inj. : 2 µl  
 Signal #1 Phase : ZB-MR1 Signal #2 Phase: ZB-MR2  
 Signal #1 Info : 30Mx0.32mmx 0.50µ Signal #2 Info : 30M x 0.32mm x 0.25µm

Compound	RT#1	RT#2	Resp#1	Resp#2	ng/ml	ng/ml
-----						
System Monitoring Compounds						
1) SA Tetrachlo...	3.475	2.743	83327062	171.8E6	22.368	25.730
2) SA Decachlor...	8.786	7.523	64203074	119.7E6	20.775m	16.471

Target Compounds

(f)=RT Delta > 1/2 Window (#)=Amounts differ by > 25% (m)=manual int.

Data Path : Z:\pestpcbsrv\HPCHEM1\ECD\_Q\Data\PQ012524\  
 Data File : PQ065070.D  
 Signal(s) : Signal #1: ECD1A.ch Signal #2: ECD2B.ch  
 Acq On : 25 Jan 2024 15:55  
 Operator : YP\AJ  
 Sample : P1244-01  
 Misc :  
 ALS Vial : 16 Sample Multiplier: 1

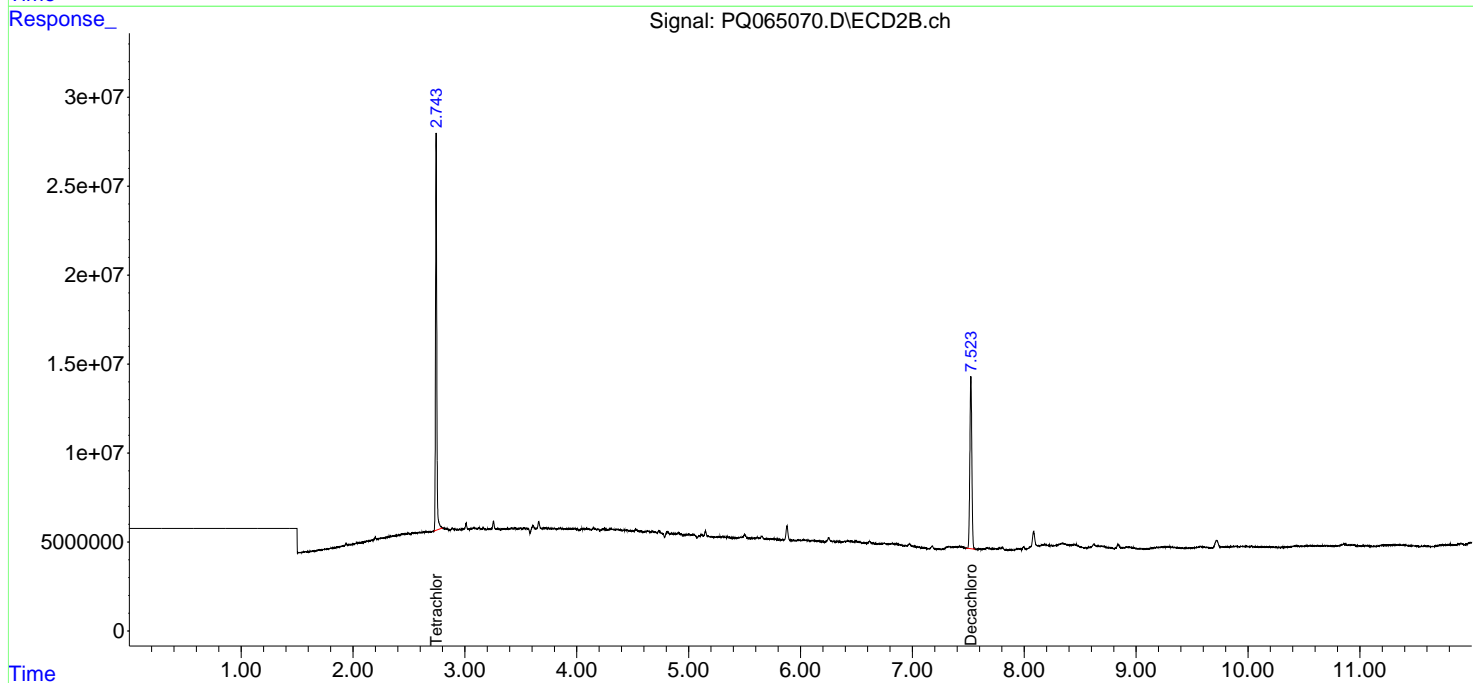
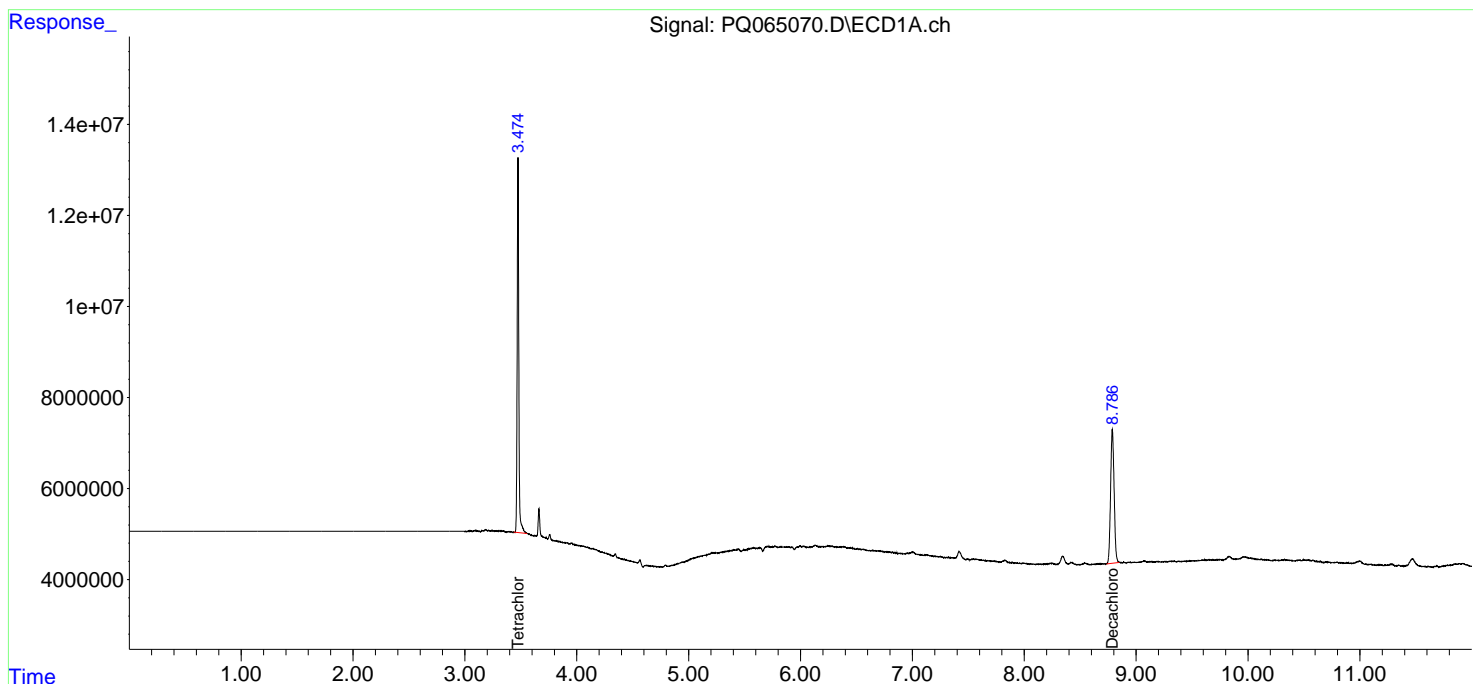
**Instrument :**  
 ECD\_Q  
**ClientSampleId :**  
 69-TP-3

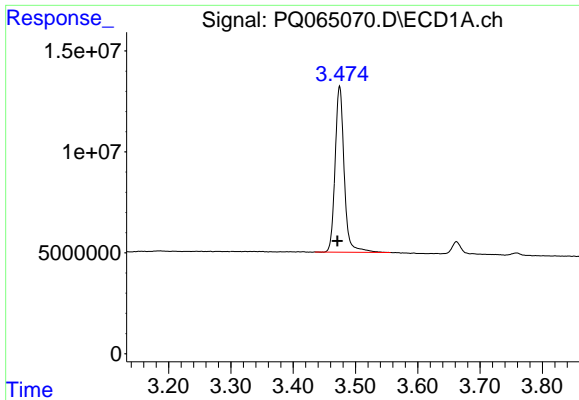
**Manual Integrations**  
**APPROVED**

Reviewed By :Ankita Jodhani 01/26/2024  
 Supervised By :Sohil Jodhani 01/26/2024

Integration File signal 1: autoint1.e  
 Integration File signal 2: autoint2.e  
 Quant Time: Jan 25 21:51:03 2024  
 Quant Method : Z:\pestpcbsrv\HPCHEM1\ECD\_Q\Method\PQ011724.M  
 Quant Title : GC EXTRACTABLES  
 QLast Update : Thu Jan 18 00:09:27 2024  
 Response via : Initial Calibration  
 Integrator: ChemStation

Volume Inj. : 2 µl  
 Signal #1 Phase : ZB-MR1 Signal #2 Phase: ZB-MR2  
 Signal #1 Info : 30Mx0.32mmx 0.50µ Signal #2 Info : 30M x 0.32mm x 0.25µm





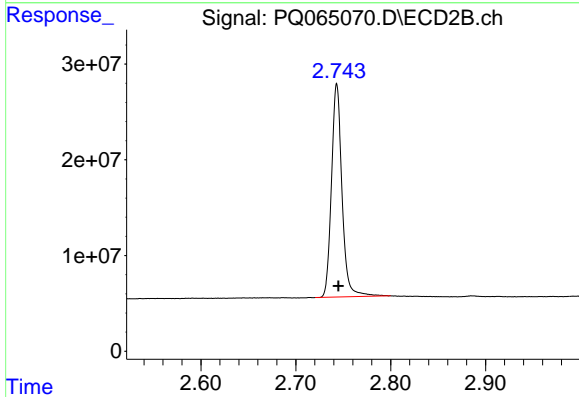
#1 Tetrachloro-m-xylene

R.T.: 3.475 min  
 Delta R.T.: 0.004 min  
 Response: 83327062  
 Conc: 22.37 ng/ml

Instrument : ECD\_Q  
 ClientSampleId : 69-TP-3

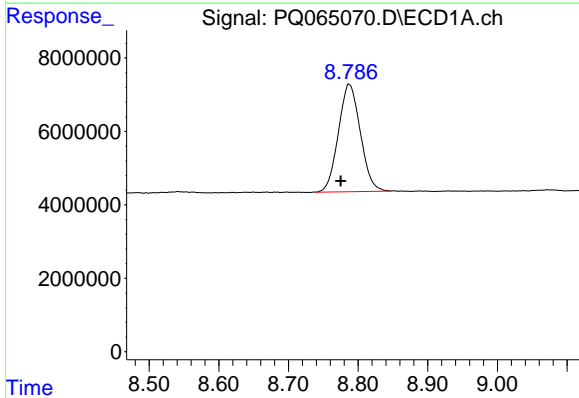
Manual Integrations  
 APPROVED

Reviewed By :Ankita Jodhani 01/26/2024  
 Supervised By :Sohil Jodhani 01/26/2024



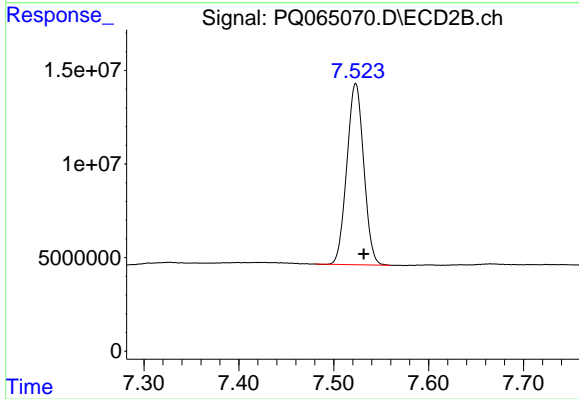
#1 Tetrachloro-m-xylene

R.T.: 2.743 min  
 Delta R.T.: -0.002 min  
 Response: 171813907  
 Conc: 25.73 ng/ml



#2 Decachlorobiphenyl

R.T.: 8.786 min  
 Delta R.T.: 0.011 min  
 Response: 64203074  
 Conc: 20.77 ng/ml m



#2 Decachlorobiphenyl

R.T.: 7.523 min  
 Delta R.T.: -0.008 min  
 Response: 119705903  
 Conc: 16.47 ng/ml